



RABDAN
DEVELOPMENTS
JUMEIRAH GARDEN CITY

ABOUT RABDAN

Rooted in half a century of Emirati legacy, Rabdan Developments reflects the quiet confidence and enduring vision of the UAE itself. Its name, taken from the prized Arabian horse of Sheikh Zayed bin Sultan Al Nahyan evokes strength, precision, and grace.

Guided by the nation's founding principles, Rabdan merges heritage with innovation, creating architecture that feels both timeless and forward-looking. Each project is conceived with the same discipline and purpose that built the country: a commitment to craft, permanence, and progress.

RABDAN DEVELOPMENTS PORTFOLIO

24

PROJECTS

4,100+

RESIDENTIAL UNITS

8.40 M

MILLION
SQUARE FEET

₪ 8.50

BILLION





“ We are living proof that when human beings have the courage and commitment to transform a dream into reality, there is nothing that can stop them. Dubai is a living example of the world. ”

H.H. SHEIKH MOHAMMED BIN RASHID AL MAKTOUM

UAE VICE PRESIDENT, PRIME MINISTER AND RULER OF DUBAI

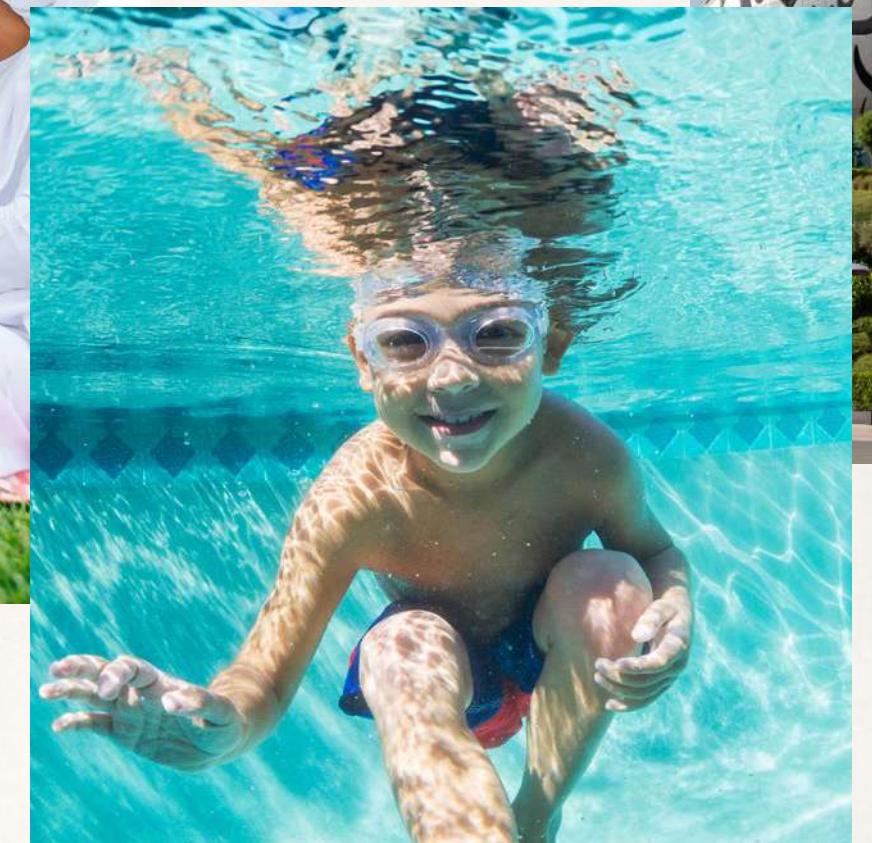
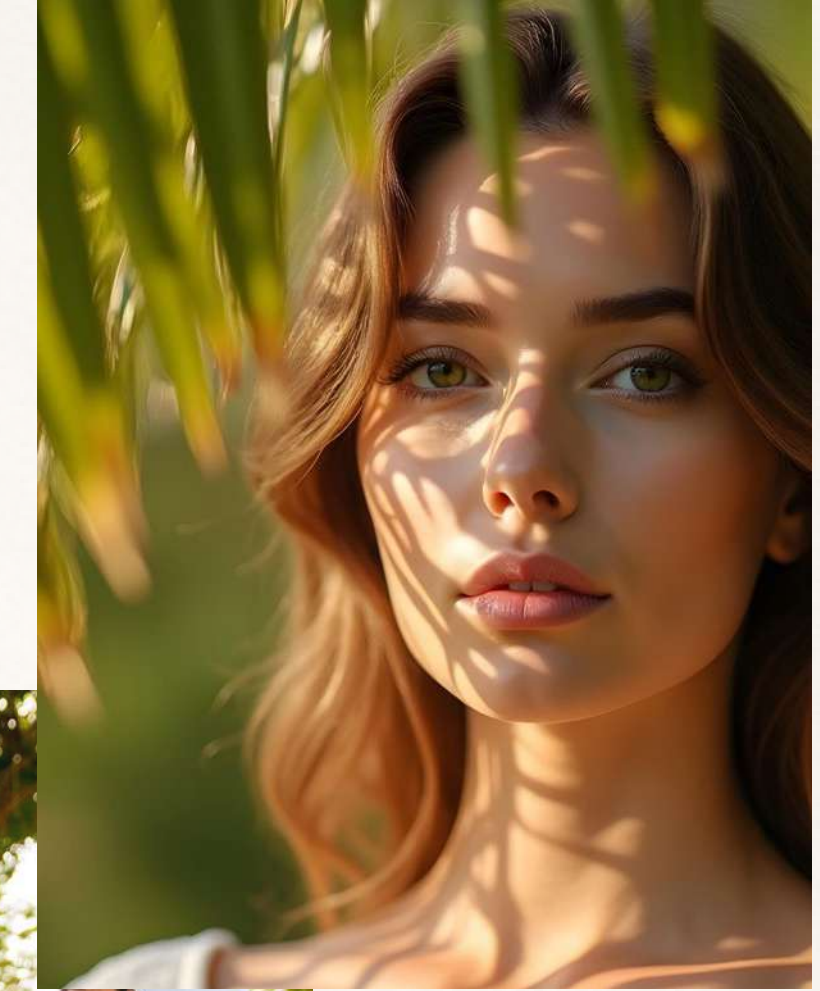
DESTINATION DUBAI

Dubai stands as a global hub for luxury living, powered by visionary leadership and world-class infrastructure. Its unmatched safety, strategic location between Asia, Africa, and Europe, and business-friendly environment make it a magnet for global talent and investment. Offering exceptional lifestyle opportunities and a vibrant, diverse community, the city continues to lead as a premier destination for growth and dynamic living.



JUMEIRAH GARDEN CITY

Jumeirah Garden City defines prime central living - perfectly positioned in the heart of Dubai with exceptional access to the city's most iconic destinations. Its unbeatable connectivity places major freeways, the financial district, Downtown Dubai, and Jumeirah's beaches just minutes away. With a low-density master plan, walkable streets, charming character, and generous community parks, this vibrant neighbourhood offers strong growth potential and an investment opportunity that's hard to match.



WELCOME TO



RABDAN
GARDENS

Rabdan Garden is a sanctuary in the heart of Jumeirah, where modern living meets nature. With shaded walkways, landscaped greens, and a walkable setting, it brings balance between home and community, calm and connection. A place where life flows and flourishes.



ONE WITH THE GARDENS

Rabdan Garden is embraced by lush greenery, creating a lifestyle where calm, clarity, and community thrive. From family strolls to moments of reflection, every path leads to a deeper connection with nature.





A LIFE IN EASY BALANCE

Rabdan Gardens blends calm, greenery, and city convenience in Jumeirah. Walk, gather, unwind here, life flows naturally.



ARCHITECTURE SHAPED BY LAND & LIGHT

Rabdan Gardens offers park and skyline views with smart shading and soft, natural interiors inspired by sea and dunes.





PARK VIEWS

Located opposite one of Jumeirah Garden City's largest community parks, Rabdan Gardens offers unobstructed, elongated park views, a rare advantage as less than 10% of plots enjoy open park frontage. Landscaped walkways and nearby parks create a truly walkable, nature-filled lifestyle.



URBAN ACCESS

Direct access to Sheikh Zayed Road and key junctions ensures exceptional connectivity. Nearby Metro stations and a pedestrian subway provide easy walkable links to major landmarks including Dubai frame, the Museum of the Future and One Central.





LOCATION MAP

Nestled between the DIFC and Sheikh Zayed Road to the East, and the beaches of Jumeirah to the West, Jumeirah Garden City boasts a strategic central location just minutes from Dubai's major landmarks.

DESTINATION	DISTANCE	TIME
City Walk	3 km	6 Min
J1 Beach	3 km	8 Min
DWTC	4 km	8 Min
One Central	5 km	10 Min
DIFC	5 km	10 Min
Downtown Dubai	7 km	10 Min
Business Bay	11 km	12 Min
Dubai Design District (D3)	11 km	14 Min
Dubai International Airport	11 km	15 Min





DRIVING DISTANCES

Every destination that defines Dubai is within effortless reach from Rabdan Gardens, located in the heart of Jumeirah Garden City. From the energy of Downtown Dubai and DIFC to the cultural landmarks of the Museum of the Future and Dubai Opera, every route offers seamless access to business, lifestyle, and leisure. With direct links to Sheikh Zayed Road and nearby Metro stations, Rabdan Gardens places you just minutes away from the very best of the city.

**DOWNTOWN
DUBAI**

DIFC 

DUBAI MALL

 **CITY
WALK**


متحف المستقبل
MUSEUM OF THE FUTURE


**CIPRIANI
DOLCI**

DXB


DUBAI OPERA

J
J1 BEACH
THE SPIRIT OF THE BEACH





THE ART OF ARRIVAL

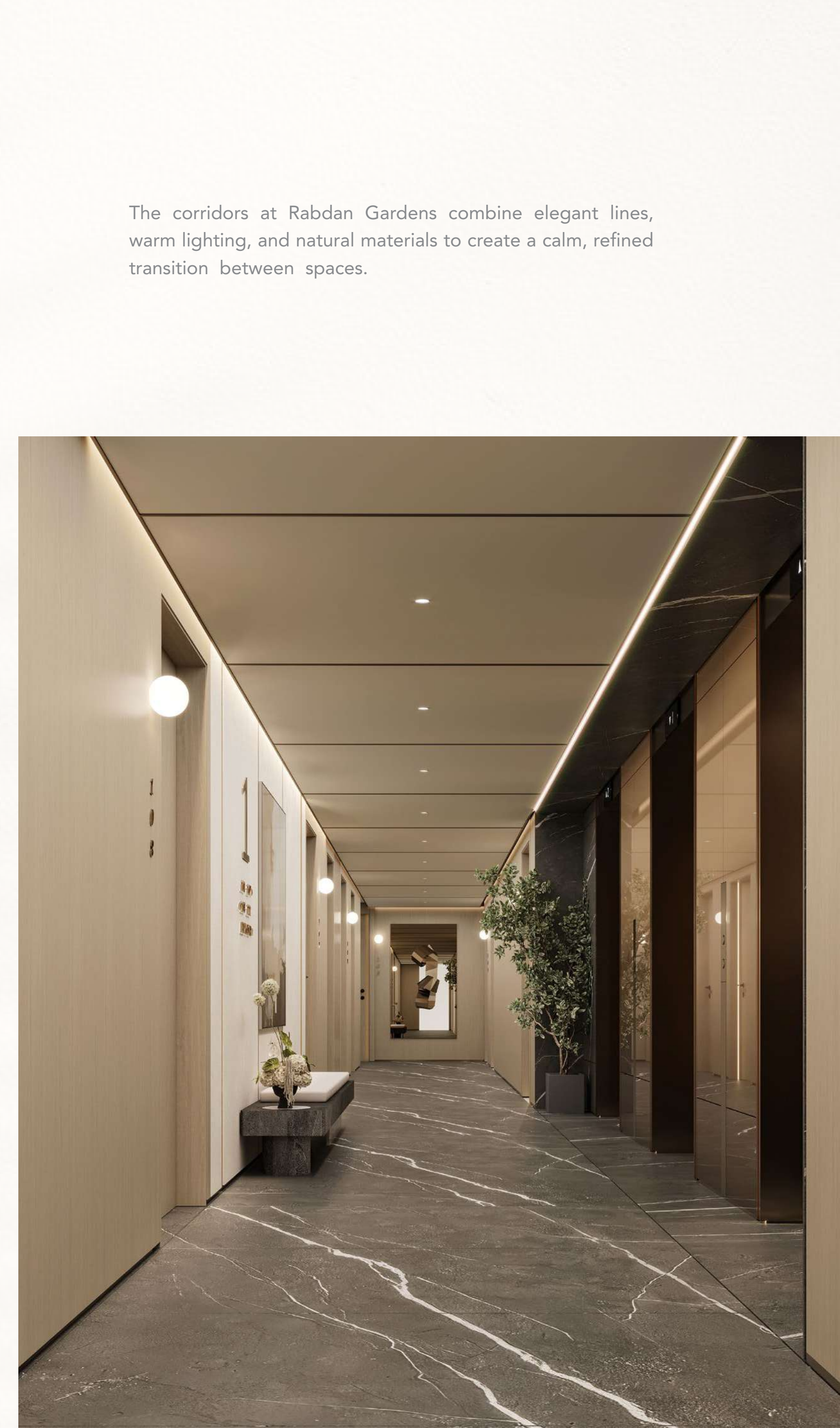
A curated blend of premium materials and refined design welcomes residents with quiet luxury.





LOBBY





The corridors at Rabdan Gardens combine elegant lines, warm lighting, and natural materials to create a calm, refined transition between spaces.



REFINED PATH
MINIMAL & PREMIUM

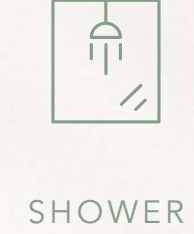


THE RABDAN LIFESTYLE

An expansive list of lifestyle amenities are available to the residents of Rabdan Gardens. A curated selection of features to ensure there is something for each resident to enjoy was carefully considered throughout the conceptualization and design process. Reputable suppliers and trusted global brands were hand-picked to residents with lasting quality, longevity, and durability.



LIFESTYLE AMENITIES







MINDFUL MOVEMENT

The Rabdan Gardens gym is a sanctuary for mind and body. Thoughtfully designed with open space, calming tones, and modern fitness equipment, it invites residents to reconnect with their strength, energy, and inner calm.



STYLISH



STRENGTH AND POWER



GYM



GYM



HOLISTIC WELLNESS SPACE

At Rabdan Gardens, wellness is a way of life. The gym is a refined retreat where thoughtful design, soft textures, and modern equipment come together to support movement, focus, and everyday wellbeing.



CLUB LOUNGE

The Rabdan Club Lounge is an elegant social retreat designed for connection, relaxation, and refined moments. With soft lighting, curated seating, and a calming ambiance, it offers residents a private space to gather, unwind, or enjoy quiet time in beautifully crafted surroundings.



SPECIALTY COSTUMES BY FILM ILLUSIONS, INC.
CREATURES CREATED BY AFX STUDIO
CREATURE DESIGN BY NEVILLE PAGE
MAKEUP DEPARTMENT HEAD DAVID LERDY ANDERSON
ASSISTANT MAKEUP DEPARTMENT HEAD DEBORAH PATINO RUTHERFORD
MAKEUP ARTISTS KAREN IVERSON • VERA STEIMBERG
DON RUTHERFORD • JEANNE VAN PHUE
MAKEUP EFFECTS ARTISTS DAVE BNYDER • BARNEY BURMAN
JAMIE KELMAN • BRIAN BIPE
SCOTT WHEELER
HAIR DEPARTMENT HEAD MARY L. MASTRO
ASSISTANT HAIR DEPARTMENT HEAD DAVID DANON
KEY HAIRSTYLIST JANINE RATH-THOMPSON
HAIRSTYLISTS SHERYL BLUM • MICHELE PAYNE
FIRST ASSISTANT EDITORS JULIAN SMIRKE
RITA DABILVA
ASSISTANT EDITORS MATT EVANS • ROBERT STAMBLER
NATHAN ORLOFF • EVAN SCHIFF
VISUAL EFFECTS EDITOR MARTIN ALLAN KLONER
ASSISTANT VISUAL EFFECTS EDITOR KERRY JOSEPH BLACKMAN
PREVIS EDITOR ADAM BERBTEL



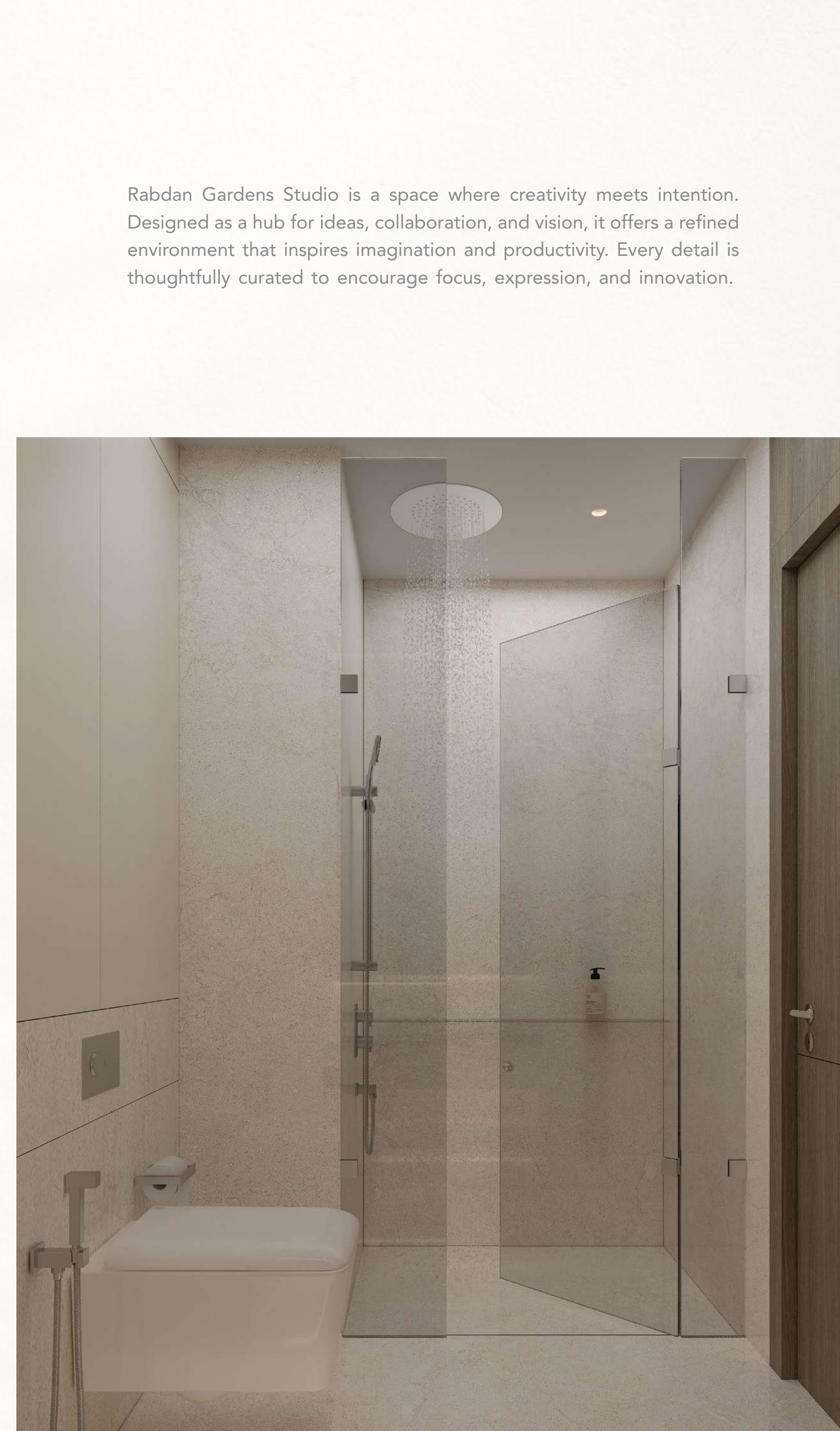
CLUB LOUNGE

...BERG
...VAN PHUE
...BURMAN
...BIPE
...LER
...TRO
...N
...-THOMPSON
...MICHELE PAYNE
...KE
...ROBERT STAMBLER
...OFF • EVAN SCHIFF
...N KLONER
...PH BLACKMAN
...EL





STUDIO



Rabdan Gardens Studio is a space where creativity meets intention. Designed as a hub for ideas, collaboration, and vision, it offers a refined environment that inspires imagination and productivity. Every detail is thoughtfully curated to encourage focus, expression, and innovation.



VISIONARY
DESIGN STUDIO





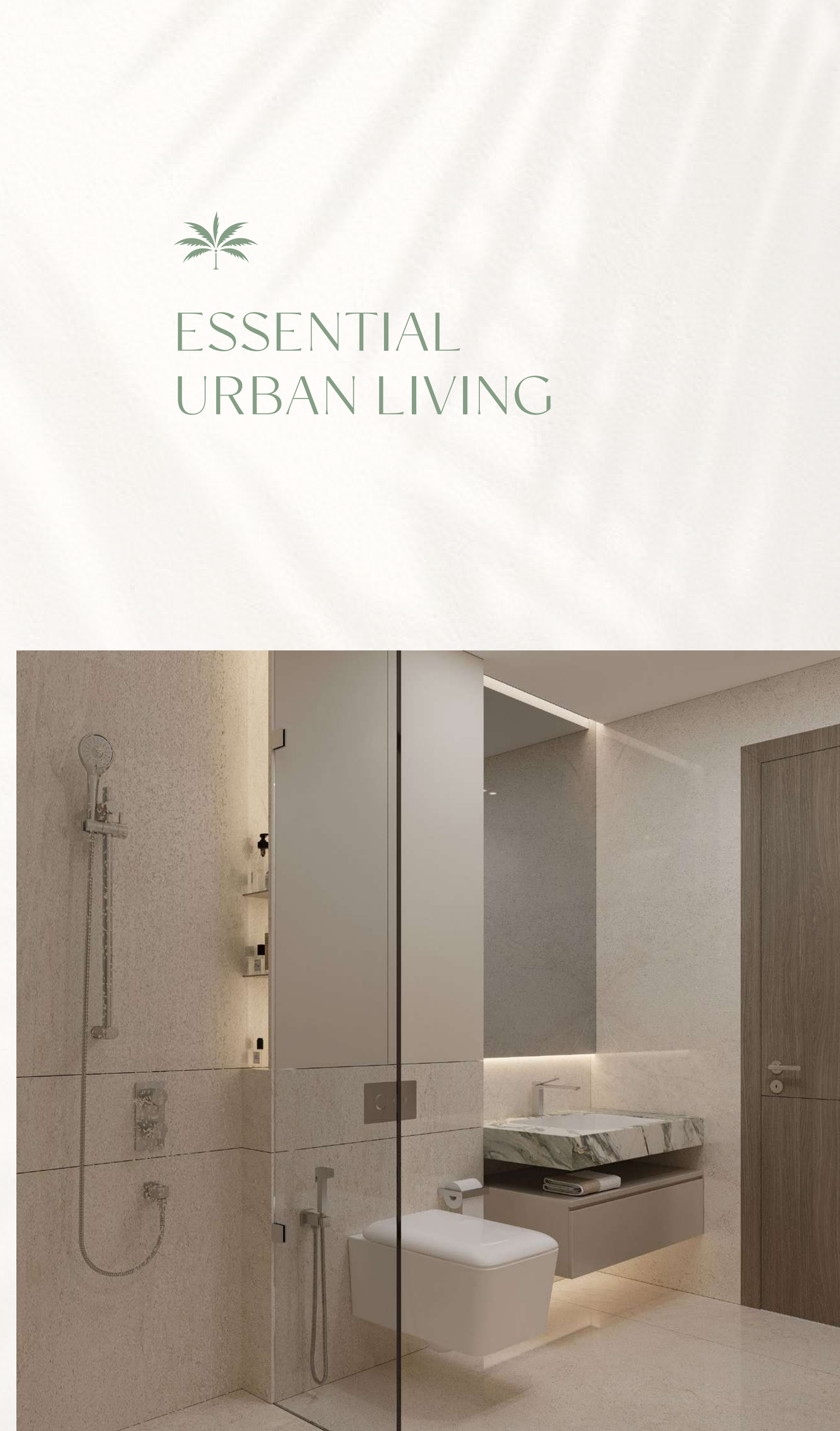
KITCHEN



1 BEDROOM



The Rabdan Gardens one-bedroom residence is a sanctuary of comfort and refined living. Thoughtfully designed to maximize space, light, and flow, it features calming interiors, elegant finishes, and an atmosphere of quiet sophistication - creating the perfect retreat in the heart of the city.



ESSENTIAL
URBAN LIVING



BEDROOM



LIVING ROOM



LIVING ROOM





2 BEDROOM



CONTEMPORARY GARDEN LIVING



Balancing privacy with openness, the two-bedroom home at Rabdan Gardens is tailored for families and modern lifestyles. With airy interiors, warm materials, and thoughtfully defined spaces, it provides a peaceful yet connected living experience in the heart of Jumeirah Garden City.



BEDROOM



BEDROOM



WARDROBE









3 BEDROOM

Created for modern families and sophisticated living, the three-bedroom home at Rabdan Gardens blends privacy with openness. Expansive living areas, calming textures, and thoughtful layouts ensure a harmonious balance between connection and retreat.



TIMELESS
GARDEN LIVING



BEDROOM



BEDROOM



BEDROOM





LIVING ROOM

