



SAMANA  
**OCEAN**  
PEARL 2

REDEFINING WATERFRONT OPULENCE

[www.majara-realestate.com](http://www.majara-realestate.com)

SAMANA  
DEVELOPERS

SAMANA  
**OCEAN**  
PEARL2



SAMANA  
**OCEAN**  
PEARL 2

**WELCOME HOME TO THE EPITOME OF WATERFRONT LIVING**

A majestic ode to the sea, a place where the rhythm of nature flows and serenades your soul, a sanctuary built around nature's finest masterpiece. Discover your space in the heart of tranquillity at SAMANA Ocean Pearl 2. Here the sea is not just a backdrop but a vital element breathing life into every moment. Embark on a journey where the horizon meets your dreams!





## MESMERIZING WATERFRONT LIVING

Wake up to the symphony of the tides with the golden hues of dawn painting a new beginning every day. Life at SAMANA Ocean Pearl 2 is a blend of luxury and nature, where the azure waters and lush landscapes create an unmatched ambiance of serenity and elegance. Experience life's majestic moments unfold each day with perfection. It's a place that revitalizes your soul and enriches your living experience.



# AN ARCHITECTURAL MARVEL

Rising gracefully along the waterfront, this magnificent structure exemplifies the flawless union of modern luxury and natural beauty. Crafted with meticulous attention to detail, the exterior of SAMANA Ocean Pearl 2 is a testament to innovative design and timeless elegance. The sleek, contemporary lines of the facade are complemented by expansive glass windows, reflecting the shimmering waters and the vibrant hues of the sky. An architectural marvel redefining sumptuous living by the waters.





# SEAMLESS ELEGANCE BY THE WATER

Standing proudly along the waterfront, the sleek lines and sophisticated design harmonize with the natural beauty surrounding it. The sprawling windows reflect the clear blue skies and the gleaming sea in the backdrop, creating a unified blend between the structure and its breathtaking environment. Right from the stylish balconies to the pristine finishes, every detail reflects unparalleled craftsmanship and luxury.



# PANORAMIC VISTAS

You are bound to be enamored by the serene beauty of the vast sea, creating the perfect view for every day. As you feel the rhythmic flow of the waves, it immerses you further into nature, building a harmony that enriches your life. It's here that you find a peaceful retreat from the bustling city. Reconnect with yourself and craft those endearing memories with your loved ones.





# SEAMLESS CONNECTIVITY

Discover the perfect balance between serene waterfront living and the vibrant pulse of the city. Prime location of SAMANA Ocean Pearl 2 offers unparalleled accessibility to the most sought-after destinations.

## 5 – 10 min

Dubai Canal  
Dubai Metro Route  
Port Rashid

## 10 – 15 min

Dubai Creek  
Deira  
Deira Corniche Area

## 15 – 20 min

JBR The Walk  
Al Mamzar Beach Park

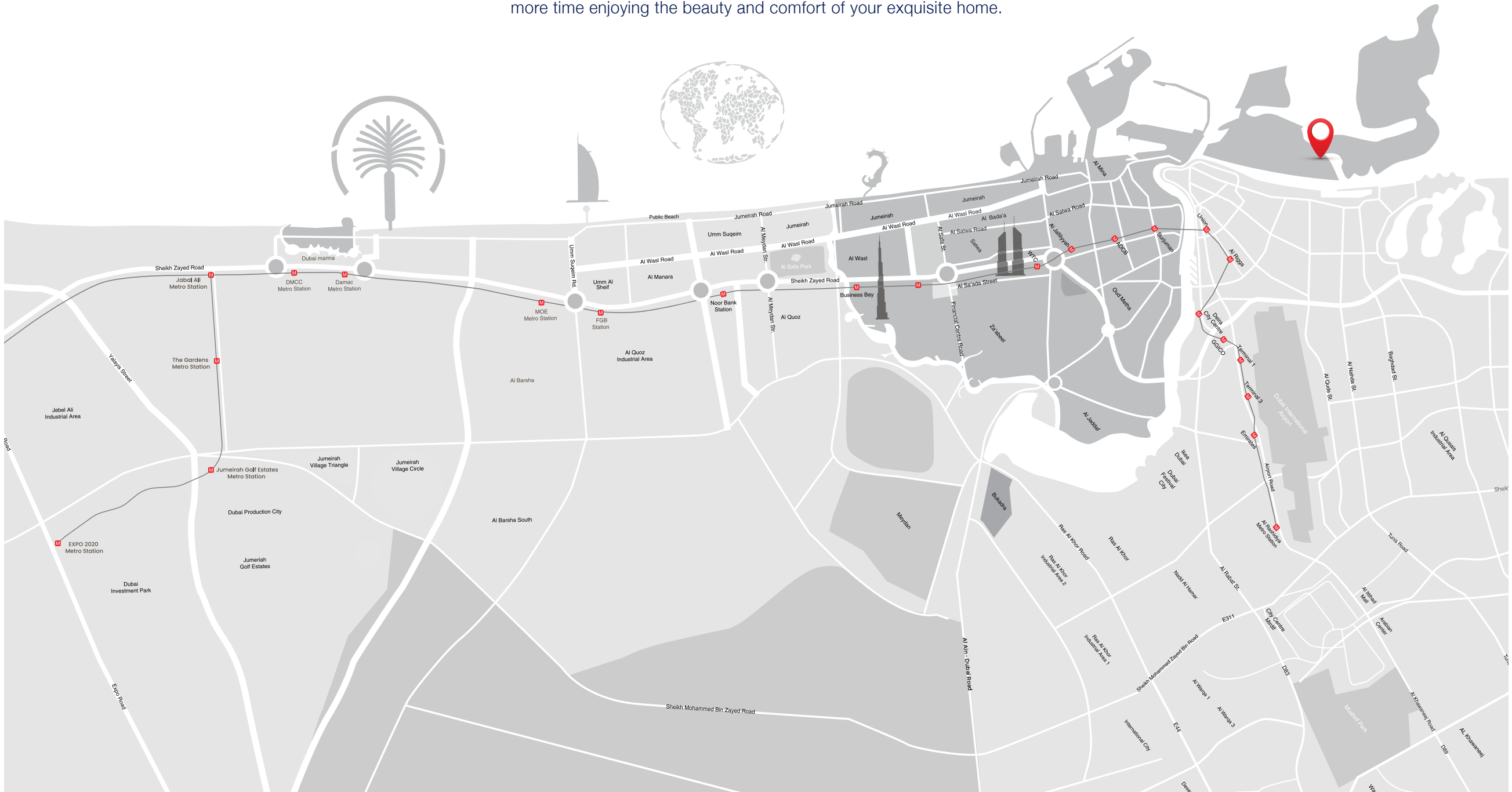
## 20 – 25 min

Dubai International Airport  
Dubai Gold Souq  
Heritage Village

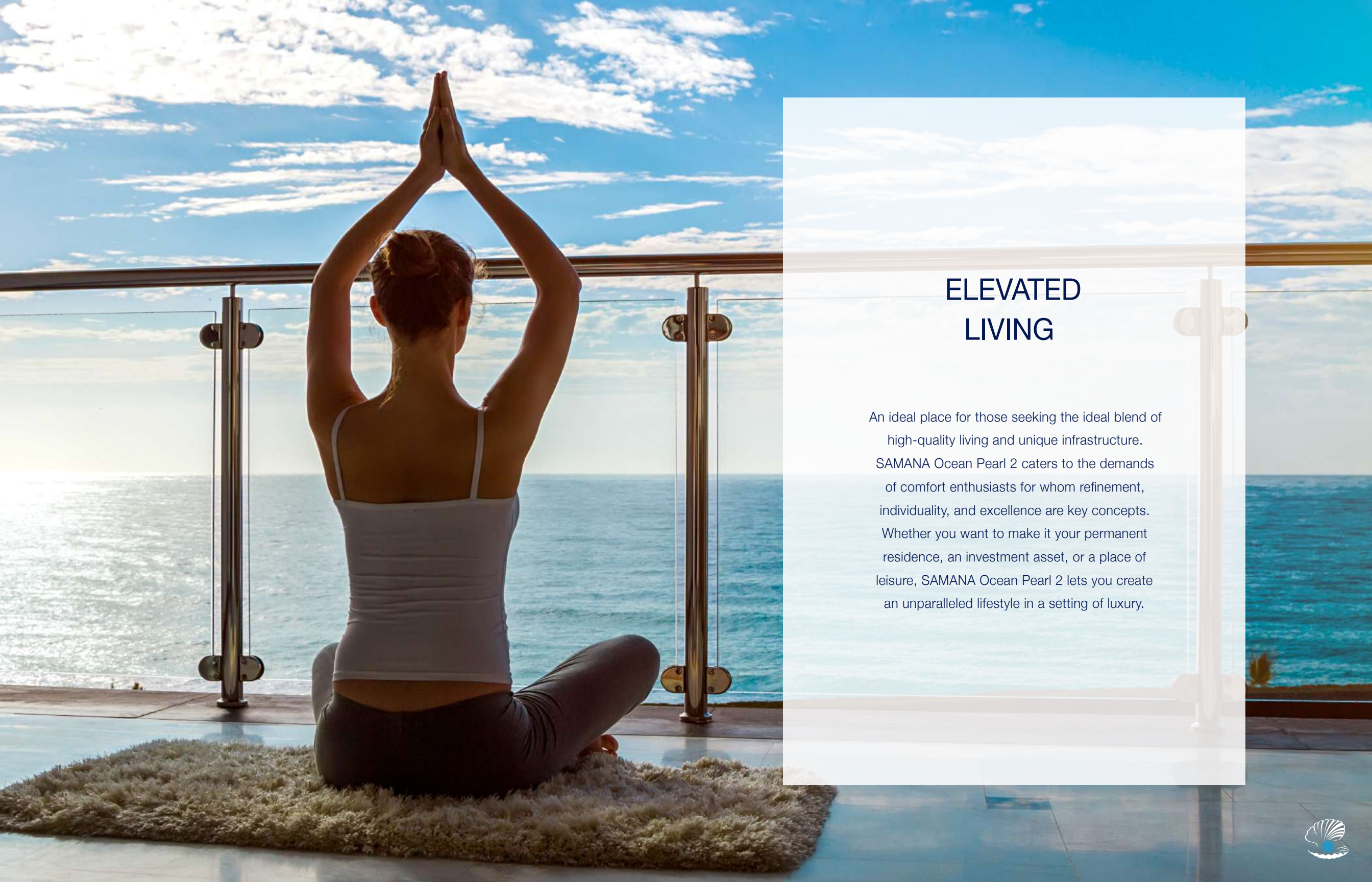


# PERFECTLY POSITIONED

Nestled by the serene sea, yet just moments away from the city's prime areas, SAMANA Ocean Pearl 2 ensures that you are never far from where you need to be. From bustling business districts to premier shopping destinations, or world-class dining and entertainment, every convenience is within your reach. Live the ease of connectivity that makes every journey effortless, allowing you to spend more time enjoying the beauty and comfort of your exquisite home.







## ELEVATED LIVING

An ideal place for those seeking the ideal blend of high-quality living and unique infrastructure. SAMANA Ocean Pearl 2 caters to the demands of comfort enthusiasts for whom refinement, individuality, and excellence are key concepts. Whether you want to make it your permanent residence, an investment asset, or a place of leisure, SAMANA Ocean Pearl 2 lets you create an unparalleled lifestyle in a setting of luxury.





## UNPARALLELED LIVING EXPERIENCE

At SAMANA Ocean Pearl,<sup>2</sup> each apartment is a harmonious blend of luxury and tranquility, designed to provide an unparalleled living experience. Every detail within these exquisite rooms speaks of sophistication and comfort. Doors are crafted with European solid cores, ensuring robust quality and an elegant finish. Handles, adorned with a sleek black matte finish from renowned German brands like Devon & Devon and equivalent, add a touch of modern elegance. The interiors are a testament to refined taste and impeccable design.







A high-angle, top-down photograph of five children in a swimming pool. They are all reaching their hands up towards a large, colorful beach ball (red, white, blue, and yellow) that is suspended in the air above them. The children are smiling and appear to be in the middle of a game. The water is a vibrant, clear blue, and the scene is brightly lit, suggesting a sunny day. The children are wearing various swimwear: a yellow and green bikini, a teal bikini, a red bikini, and dark swim trunks.

## SERENE WATERS, UNMATCHED LUXURY

Epitomizing luxury and serenity, SAMANA Ocean Pearl 2 offers you the ultimate relaxation with its exquisite pool. The grand main pool offers an expansive sanctuary where you can luxuriate in the sun-drenched tranquility or take a refreshing dip with sweeping views of the azure waters. For those seeking unparalleled privacy, our exclusive private pools are an extension of your own residence.





# EMBARK ON AN OCEANIC JOURNEY

SAMANA Ocean Pearl 2 presents an extraordinary waterfront lifestyle, where modernity meets serenity.

Here you can experience a perfect blend of relaxation and vibrant energy as you immerse yourself in the coastal ambiance. Whether it's strolling along the pristine beach or enjoying a quiet time by yourself, SAMANA Ocean Pearl 2 offers a world of possibilities to enhance your everyday life.





SAMANA

RECEPTION







## ELEGANCE AND COMFORT IN EVERY DETAIL

Step inside SAMANA Ocean Pearl 2 and immerse yourself in an oasis of refined luxury and unparalleled comfort. The interiors are thoughtfully designed to offer a sanctuary where elegance meets relaxation, creating an environment that is both stylish and serene. Each residence boasts spacious layouts, adorned with premium finishes and meticulous craftsmanship. The kitchens are a testament to sophistication and functionality, featuring soft-close mechanisms from renowned German brands and countertops and backsplashes adorned with exquisite Spanish porcelain tiles.







# CURATING AN EXCEPTIONAL LIFESTYLE

At SAMANA Ocean Pearl 2, each residence is more than just a living space; it is a sanctuary where elegance, comfort, and nature converge to create a truly exceptional lifestyle. Bedrooms are serene havens, featuring plush furnishings and soft, neutral tones that invite restful slumber. The seamless integration of high-quality materials and sophisticated finishes creates an atmosphere of understated luxury. Whether you are lounging in your living room or enjoying a moment of peace on your balcony, the mesmerizing ocean vistas provide a constant reminder of the beauty that surrounds you.





NO  
EXCUSES

## STATE-OF-THE-ART FITNESS

Fitness takes centre stage at SAMANA Ocean Pearl 2 where our gym is designed to offer a premium fitness experience, equipped with the latest Technogym equipment. Whether you're a dedicated athlete or just beginning your wellness journey, our state-of-the-art facility ensures every workout is both effective and enjoyable. From cutting-edge cardio machines to advanced strength training equipment, Technogym's renowned quality and innovation are at the heart of our fitness center.

**TECHNOGYM**







# DIVE INTO THE ESSENCE OF TRANQUILITY

SAMANA Ocean Pearl 2, located on the prestigious Dubai Island, is a visionary residential project that redefines the concept of waterfront luxury. Seamlessly blending exquisite design, unparalleled amenities, and a prime waterfront location, SAMANA Ocean Pearl 2 materializes your vision of a lifestyle marked with opulence and equanimity.



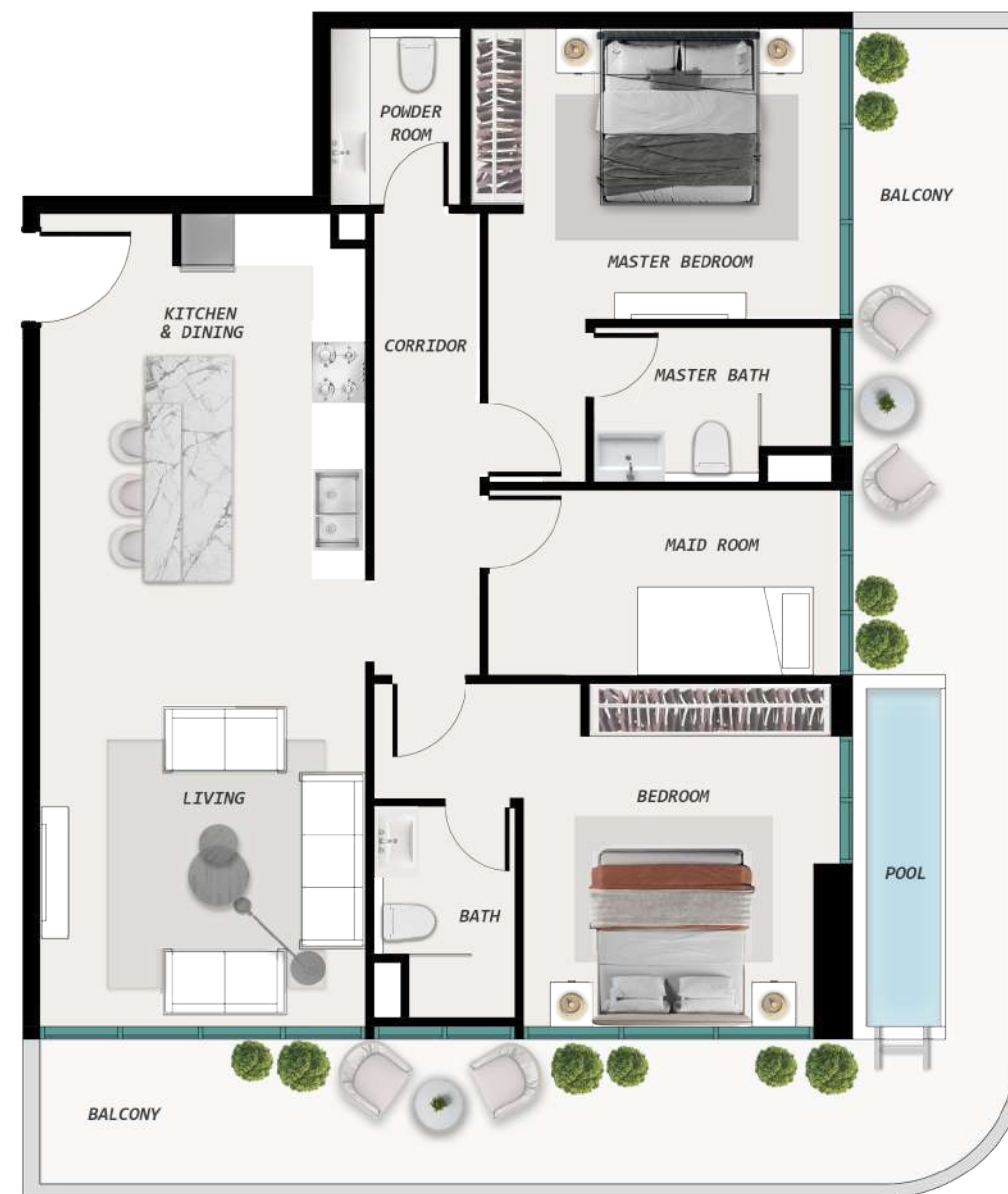
# UNITS LAYOUT

A modern living room interior with a blue tint. The room features a large wall-mounted TV, a low-profile sofa, a coffee table with books, and a dining area in the background. The text "UNITS LAYOUT" is overlaid in the center.

# ONE BEDROOM WITH POOL



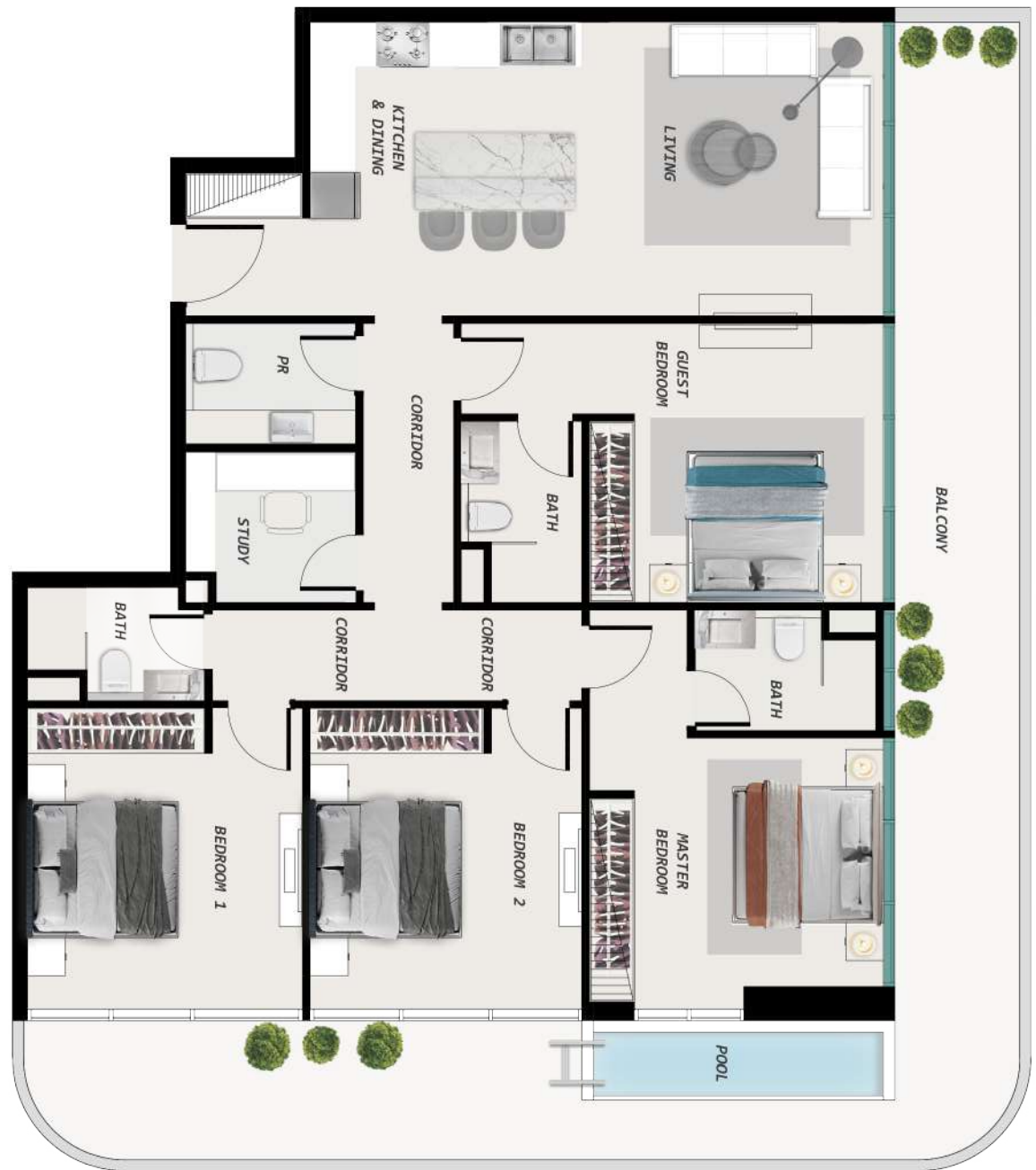
# TWO BEDROOM WITH POOL



# THREE BEDROOM WITHOUT POOL



# FOUR BEDROOM WITH POOL





**CONTACT**

**UAE : +971 58 586 4405**

**CH : +41 79 777 3773**

**info@majara-realestate.com**

**www.majara-realestate.com**

**MAJARA REAL ESTATE LLC  
Burj Al Salam Tower, 36th floor  
Sheikh Zayed Road  
Dubai UAE**

**SAMANA**  
DEVELOPERS

+971 4 563 9510

info@samanadevelopers.com

www.samanadevelopers.com

4th Floor, Building 7,  
Bay Square, Business Bay,  
Dubai, United Arab Emirates

