

MAJARA LUXURY REAL ESTATE LLC

Head Office Level 36-01, Po Box :124382 , Trade Center 1, Sheikh Zayed Road , Burj Al Salam Tower Dubai UAE



**Majara Presents Circle Residence at JVC
Iconic Homes, Unmatched Elegance**

An aerial photograph of the Circle skyscraper in Dubai, showing its unique circular design and surrounding urban landscape. The building is a tall, cylindrical structure with a distinctive, multi-tiered facade that gives it a crown-like appearance. It is situated in a lush, green environment with palm trees and other vegetation. In the background, other high-rise buildings are visible, and a large, circular park area with concentric paths and a central green space is located to the right of the building. The overall scene is bathed in the warm, golden light of the setting or rising sun, creating a serene and sophisticated atmosphere.

The Crown of Sophistication

At the very heart of Jumeirah Village Circle rises **Circle**, an architectural masterpiece that transcends mere structure to become a statement of ultimate luxury and sophistication. It is a sanctuary where elegance meets serenity, offering a world where every detail is crafted to perfection and the city's pulse fades into tranquil harmony. More than a residence, **Circle** is a pinnacle of refined living—where grandeur, comfort, and timeless design converge to create an unparalleled lifestyle.

Epic in Architecture

Circle is a masterpiece of design, a seamless expression of architectural wholeness. Its commanding silhouette, an elegant interplay of curves and elevations, harmonizes with the JVC skyline while asserting its own distinctive, captivating presence. Pause and behold how **unity is sculpted in light and form**, where every line, shadow, and contour reflects precision, artistry, and timeless sophistication.



PROJECT FACTS

PROPERTY TYPE:

Residential, Retail & Commercial

PLOT AREA:

6421.58 SQ.M / 69121.24 SQFT

DESCRIPTION:

*2B + G + 4P + 58 FLOORS + 3 MECH. +
3 STR. + ROOF*

NUMBER OF UNITS:

*Studio: 250
1 Bedroom: 504
2 Bedroom: 16
3 Bedroom: 6*

TOTAL UNITS:

*Residential Units: 776
Offices: 31
Shops (Ground Floor): 15*





A Signature Structure That Encompasses

Circle is far more than a residence; it is a soaring expression of refined living. Enter a world where every detail is meticulously crafted to calm the mind and elevate the spirit. Here, the weight of the world fades, and each perfectly considered element forms a sanctuary of **complete wholeness** enveloping you in timeless serenity and elegance.



An Architectural Masterpiece at the Heart of It All

Situated in the vibrant heart of Jumeirah Village Circle, Circle offers unmatched connectivity and convenience. Its prime location places residents just minutes from key landmarks, including Circle Mall, Jumeirah Five Hotel, Dubai International Cricket Stadium, Dubai Marina, Palm Jumeirah, and a curated selection of upscale dining destinations. Enjoy seamless access to major thoroughfares such as Al Khail Road and Sheikh Mohammed Bin Zayed Road, ensuring effortless travel across the city. Renowned for being **family- and pet-friendly**, the community is enriched with abundant parks and recreational spaces. At Circle, return to a sanctuary where connectivity, comfort, and refined living converge.



At the Heart of the City, Anchored in Design

Circle offers an unparalleled sense of connectivity, placing the city's endless possibilities at your fingertips. From its vibrant core, renowned districts, premier retail destinations, and esteemed educational institutions unfold, while world-class healthcare facilities are just moments away, ensuring every aspect of life is effortless. Here, the iconic vistas of Dubai and its celebrated landmarks become more than sights—they become a seamless extension of your own elevated world.



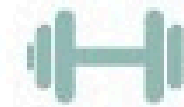
Where Elegance Shapes Life



A WORLD OF RENEWAL, ENCIRCLED IN LUXURY



SWIMMING POOL



INDOOR GYM



JOGGING TRACK



PADDLE COURT



BASKETBALL
COURT



KIDS PLAY
AREA



CABANAS &
LOUNGES



GREEN
LANDSCAPING



SMART HOME
FEATURES

Precision in Every Detail, Beauty in Every Line

Circle stands as a testament to unwavering commitment to quality and craftsmanship. Every residence is meticulously designed, where elegance and lightness are brought to life in every detail. Embracing energy-efficient practices and premium sustainable materials throughout, Circle reflects a profound dedication to harmony, enduring value, and timeless sophistication. Its striking geometry, continuously unfolding, is more than architecture—it is an invitation to experience a complete, inspired way of life.

MIRROR-----

TRAVERTINE-----

OAK WOOD-----

MARBLE -----

FLUTTED -----
WHITE WOOD

GLASS-----

-----ANTIQUE BRASS

-----MARBLE

-----WOOD PORCELAIN

-----TRAVERTINE

Luxury in Every Line

Discover the design nuances that make Circle truly exceptional. From the fluid curves of its soaring façade—a masterful architectural interpretation of the circle—to the meticulously curated interiors, every detail reflects a passion for creating spaces that inspire. Experience the tactile contrast of polished surfaces and bespoke finishes, inviting you to pause and savor the artistry. Its undulating form, symbolizing perpetual motion, orchestrates a dynamic interplay of light and shadow throughout the day, transforming every moment into a visual and sensory experience.





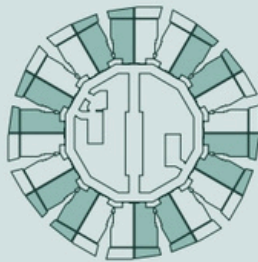
FLOOR PLANS

Explore a collection of thoughtfully crafted residences tailored to your lifestyle. From intimate studios to expansive three-bedroom apartments, Circle offers spaces designed for those who desire the very best. With residential, retail, and commercial spaces seamlessly integrated, the development creates a vibrant, self-contained environment where every detail is designed to elevate modern living.



UNIT TYPE: STUDIO

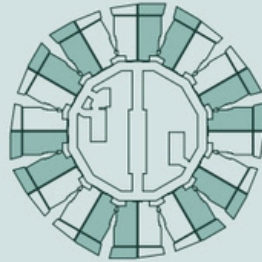
STUDIO TYPE 01



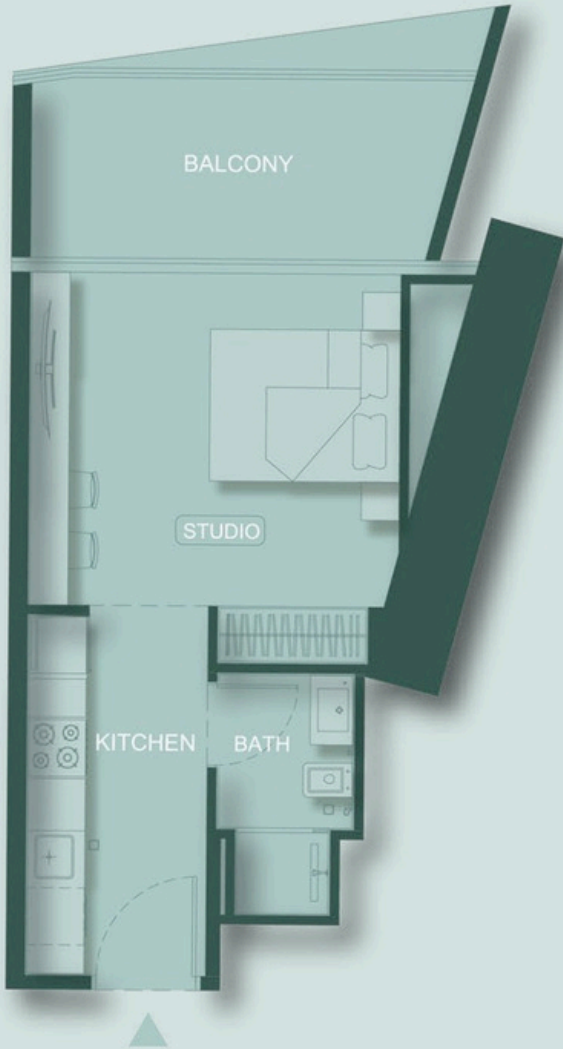
AREA	SQ. M	SQ. FT
SUITE AREA	28.58 m²	307.63 ft²
BALCONY AREA	7.12 m²	76.64 ft²
TOTAL UNIT AREA	35.70 m²	384.27 ft²
FLAT DESIGN COMPONENTS		
BATH		3 m²
STUDIO		15 m²
KITCHEN		8 m²



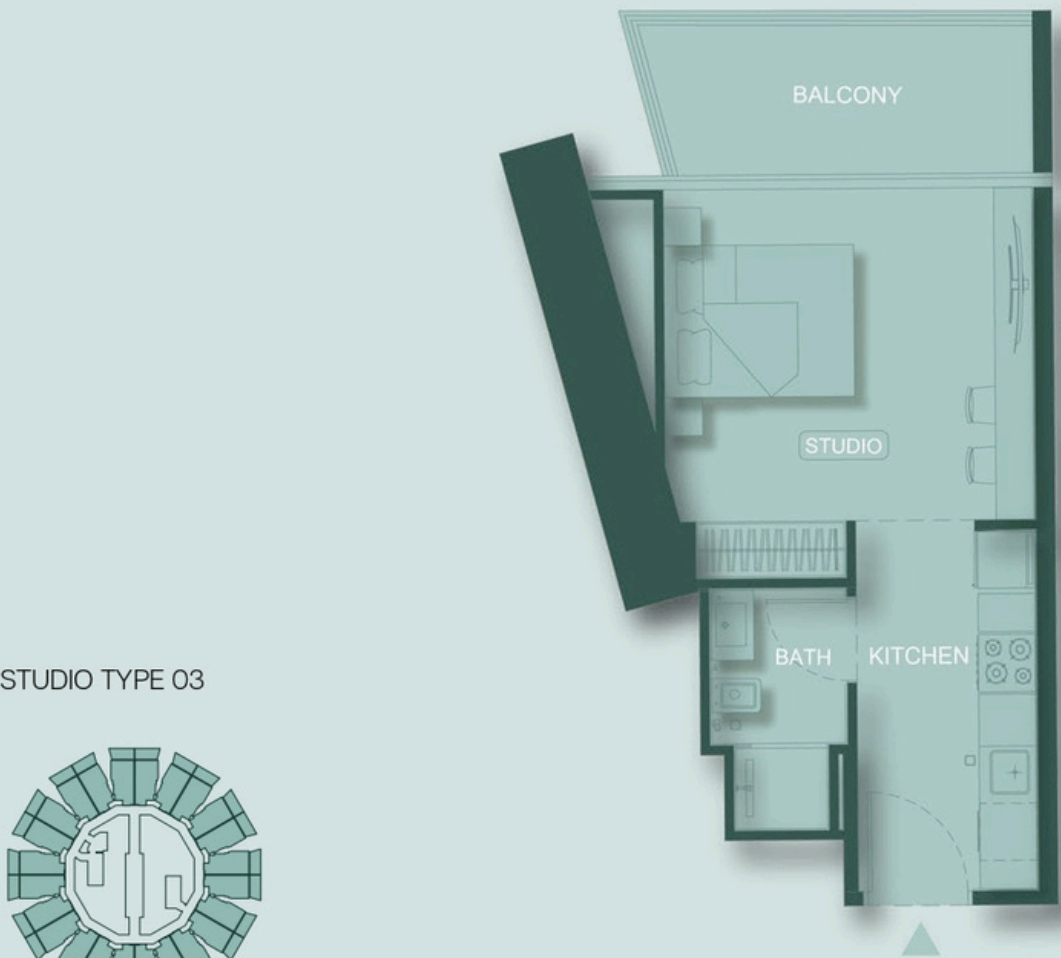
STUDIO TYPE 02



AREA	SQ. M	SQ. FT
SUITE AREA	28.58 m²	307.63 ft²
BALCONY AREA	9.03 m²	97.20 ft²
TOTAL UNIT AREA	37.61 m²	404.83 ft²
FLAT DESIGN COMPONENTS		
BATH		3 m²
STUDIO		15 m²
KITCHEN		8 m²



UNIT TYPE: STUDIO



STUDIO TYPE 03

AREA	SQ. M	SQ. FT
SUITE AREA	28.58 m²	307.63 ft²
BALCONY AREA	7.98 m²	85.90 ft²
TOTAL UNIT AREA	36.56 m²	393.53 ft²

FLAT DESIGN COMPONENTS		
BATH	3 m²	
STUDIO	15 m²	
KITCHEN	8 m²	



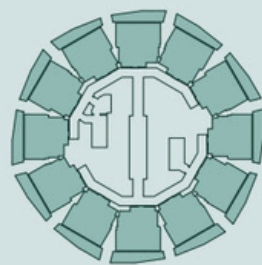
STUDIO TYPE 04

AREA	SQ. M	SQ. FT
SUITE AREA	26.72 m²	287.61 ft²
BALCONY AREA	7.98 m²	85.90 ft²
TOTAL UNIT AREA	34.70 m²	373.50 ft²

FLAT DESIGN COMPONENTS		
BATH	3 m²	
STUDIO	15 m²	
KITCHEN	8 m²	

UNIT TYPE: 1 BEDROOM

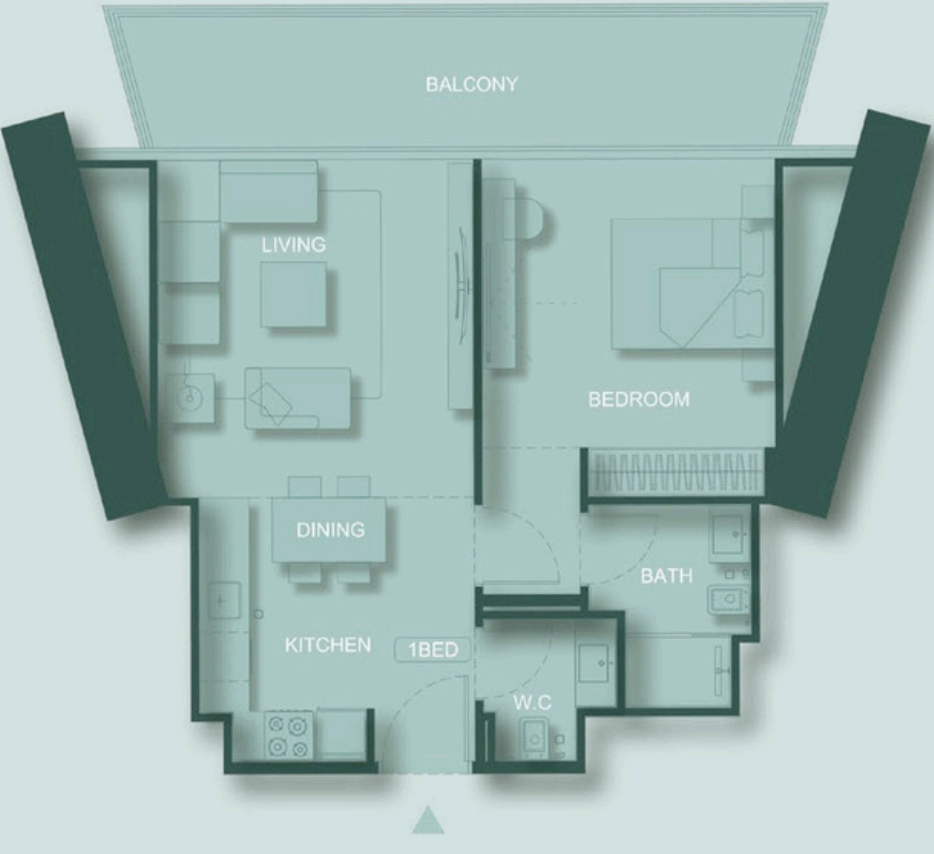
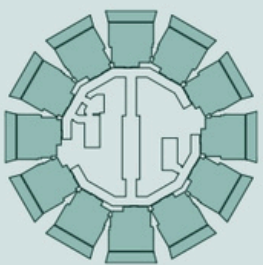
1 BEDROOM TYPE 01



AREA	SQ. M	SQ. FT
SUITE AREA	54.86 m²	590.51 ft²
BALCONY AREA	16.25 m²	174.9 ft²
TOTAL UNIT AREA	71.11 m²	765.42 ft²

FLAT DESIGN COMPONENTS	
M.BATH	4 m²
M.BEDROOM	16 m²
LIVING	16 m²
KITCHEN & DINING	7 m²
CORRIDOR	4 m²
WC	3 m²

1 BEDROOM TYPE 02

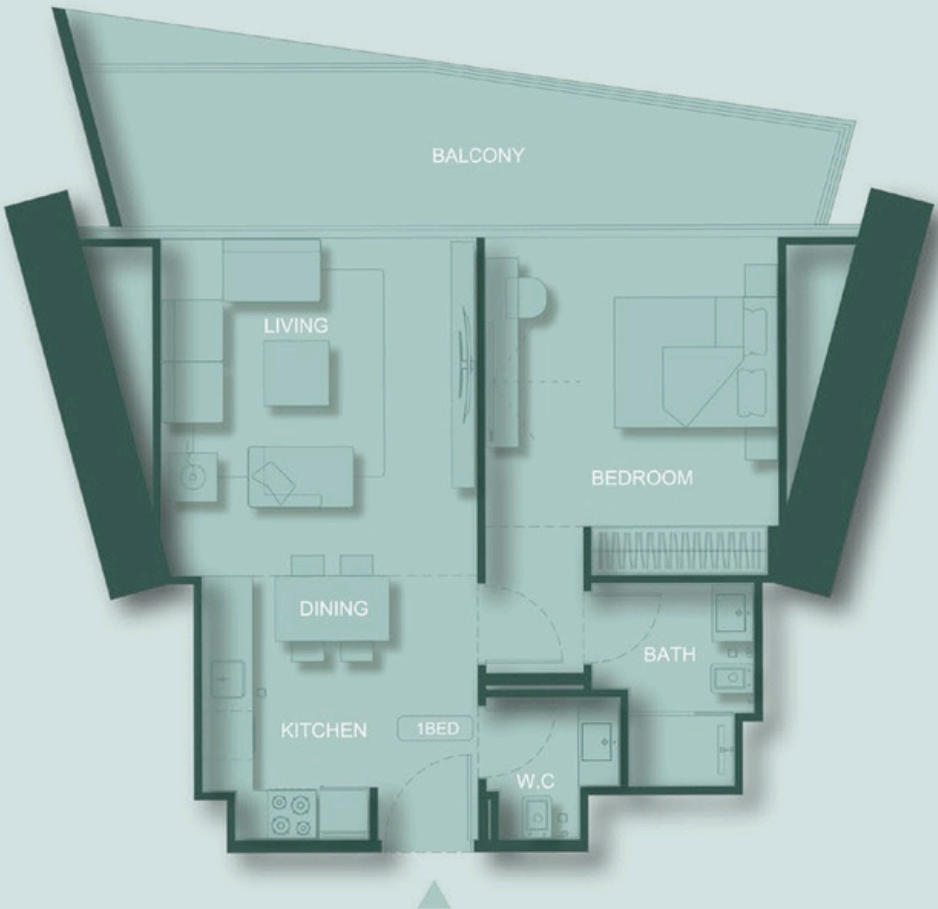
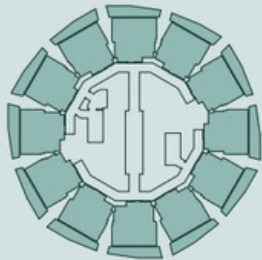


AREA	SQ. M	SQ. FT
SUITE AREA	54.86 m²	590.51 ft²
BALCONY AREA	15.95 m²	171.68 ft²
TOTAL UNIT AREA	70.81 m²	762.19 ft²

FLAT DESIGN COMPONENTS	
M.BATH	4 m²
M.BEDROOM	16 m²
LIVING	16 m²
KITCHEN & DINING	7 m²
CORRIDOR	4 m²
WC	3 m²

UNIT TYPE: 1 BEDROOM

1 BEDROOM TYPE 03



AREA	SQ. M	SQ. FT
SUITE AREA	54.86 m²	590.51 ft²
BALCONY AREA	16.26 m²	175.02 ft²
TOTAL UNIT AREA	71.12 m²	765.53 ft²

FLAT DESIGN COMPONENTS	
M.BATH	4 m²
M.BEDROOM	16 m²
LIVING	16 m²
KITCHEN & DINING	7 m²
CORRIDOR	4 m²
WC	3 m²

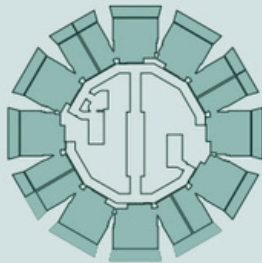
Disclaimer: 1. All room dimensions are measured to structural elements and exclude wall finishes and construction tolerances. 2. All dimensions have been provided by our consultant architects. 3. All materials, dimensions and drawings are approximate. Information is subject to change without notice. 4. Actual suite area may vary from the stated area. Drawings not to scale. The developer reserves the right to make revisions. 5. Calculation of suite area is measured as the area bounded by the centre line of demising or partition walls separating one unit from another unit, the exterior face of all exterior walls, and the exterior face of the corridor wall enclosing the adjoining unit. 6. Calculation of balcony area is measured as the area bounded by the centre line of demising or partition walls separating one unit from another unit, the outmost face of the enclosing guard and the external face of the adjoining balcony. 7. The units are measured at typical floor in the building. Columns may vary in size depending on the floor level 8. For each unit type, unit sizes and details might be slightly different. Please refer to the sales and purchase agreement for the actual size of each specific unit.

تنويه: ١. إن أبعاد الغرف يتم قياسها طبقاً للعناصر الهيكلية مع استبعاد تشطيبات الجدران ودرجة تحمل البناء. ٢. جميع القياسات تم تزويدها من قبل المهندسين المعماريين الاستشاريين لدينا. ٣. جميع المواد والأبعاد والرسومات تقريبية. تخضع المعلومات للتغيير دون إشعار مسبق. ٤. قد تختلف منطقة الجناح الفعلي عن المساحة المذكورة. الرسومات لا يتم توسيع نطاقها. يحتفظ المطور بالحق في إجراء التغييرات. ٥. يتم قياس حساب منطقة الجناح كمنطقة يحدها الخط المركزي للجدران الفاصلة أو الفاصلة التي تفصل وحدة عن وحدة أخرى ، والوجه الخارجي لجميع الجدران الخارجية ، والوجه الخارجي لجدار الممر المحيط بالوحدة المجاورة. ٦. ويقاس حساب منطقة الشرفة على أنها المنطقة التي يحدها الخط المركزي للجدران الفاصلة أو الفاصلة التي تفصل وحدة عن وحدة أخرى. والوجه الأبعد للحارس المرفق والوجه الخارجي للشرفة المجاورة. ٧. يتم قياس الوحدات في الطابق النموذجي في المبنى. قد تختلف الأعمدة في الحجم حسب مستوى الطابق. ٨. قد تكون أحجام الوحدات والتفاصيل المتعلقة بها مختلفة وذلك حسب نوع الوحدة. يرجى الرجوع إلى اتفاقية البيع والشراء لمعرفة الحجم الفعلي لكل وحدة.



UNIT TYPE: 2 BEDROOM

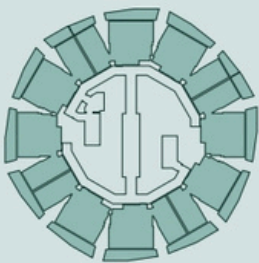
2 BEDROOM TYPE 01



AREA	SQ. M	SQ. FT
SUITE AREA	84.18 m²	906.11 ft²
BALCONY AREA	23.93 m²	257.58 ft²
TOTAL UNIT AREA	108.11 m²	1163.69 ft²

FLAT DESIGN COMPONENTS	
M.BATH	4 m²
M.BEDROOM	17 m²
LIVING	15 m²
KITCHEN & DINING	9 m²
CORRIDOR	9 m²
BATH	4 m²
BEDROOM	15 m²
LAUNDRY	1 m²
WC	3 m²

2 BEDROOM TYPE 02

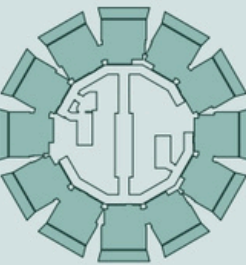


AREA	SQ. M	SQ. FT
SUITE AREA	84.18 m²	906.11 ft²
BALCONY AREA	25.35 m²	272.87 ft²
TOTAL UNIT AREA	109.53 m²	1178.97 ft²

FLAT DESIGN COMPONENTS	
M.BATH	4 m²
M.BEDROOM	17 m²
LIVING	15 m²
KITCHEN & DINING	9 m²
CORRIDOR	9 m²
BATH	4 m²
BEDROOM	15 m²
LAUNDRY	1 m²
WC	3 m²

UNIT TYPE: 3 BEDROOM

3 BEDROOM TYPE 01



AREA	SQ. M	SQ. FT
SUITE AREA	112.31 m²	1208.89 ft²
BALCONY AREA	31.91 m²	343.48 ft²
TOTAL UNIT AREA	144.22 m²	1552.37 ft²

FLAT DESIGN COMPONENTS	
M.BATH	5 m²
M.BEDROOM	17 m²
LIVING	16 m²
KITCHEN & DINING	10 m²
CORRIDOR	13 m²
BATH	5 m²
BEDROOM	16 m²
BEDROOM	15 m²
STORE	4 m²
WC	3 m²



Disclaimer: 1. All room dimensions are measured to structural elements and exclude wall finishes and construction tolerances. 2. All dimensions have been provided by our consultant architects. 3. All materials, dimensions and drawings are approximate. Information is subject to change without notice. 4. Actual suite area may vary from the stated area. Drawings not to scale. The developer reserves the right to make revisions. 5. Calculation of suite area is measured as the area bounded by the centre line of demising or partition walls separating one unit from another unit, the exterior face of all exterior walls, and the exterior face of the corridor wall enclosing the adjoining unit. 6. Calculation of balcony area is measured as the area bounded by the centre line of demising or partition walls separating one unit from another unit, the outmost face of the enclosing guard and the external face of the adjoining balcony. 7. The units are measured at typical floor in the building. Columns may vary in size depending on the floor level 8. For each unit type, unit sizes and details might be slightly different. Please refer to the sales and purchase agreement for the actual size of each specific unit.

تنويه: ١. إن أبعاد الغرف يتم قياسها طبقاً للعناصر الهيكلية مع استبعاد تشطيبات الجدران ودرجة تحمل البناء. ٢. جميع القياسات تم تزويدها من قبل المهندسين المعماريين الاستشاريين لدينا. ٣. جميع المواد والأبعاد والرسومات تقريبية. تخضع المعلومات للتغيير دون إشعار مسبق. ٤. قد تختلف منطقة الجناح الفعلي عن المساحة المذكورة. الرسومات لا يتم توسيع نطاقها. يحتفظ المطور بالحق في إجراء التغييرات. ٥. يتم قياس حساب منطقة الجناح كمنطقة يحدها الخط المركزي للجدران الفاصلة أو الفاصلة التي تفصل وحدة عن وحدة أخرى، والوجه الخارجي لجميع الجدران الخارجية، والوجه الخارجي لجدار الممر المحيط بالوحدة المجاورة. ٦. ويقاس حساب منطقة الشرفة على أنها المنطقة التي يحدها الخط المركزي للجدران الفاصلة أو الفاصلة التي تفصل وحدة عن وحدة أخرى، والوجه الأبعد للحارس المرفق والوجه الخارجي للشرفة المجاورة. ٧. يتم قياس الوحدات في الطابق النموذجي في المبنى. قد تختلف الأعمدة في الحجم حسب مستوى الطابق. ٨. قد تكون أحجام الوحدات والتفاصيل المتعلقة بها مختلفة وذلك حسب نوع الوحدة. يرجى الرجوع إلى اتفاقية البيع والشراء لمعرفة الحجم الفعلي لكل وحدة.



AN INVESTMENT IN DEFINITIVE PRESENCE

An Investment in Definitive Presence

Circle represents a compelling investment opportunity, rooted in freehold ownership in designated areas within one of the safest cities in the world. As the tallest building in JVC, it offers strong historical appreciation in property values and high rental yield potential.

JVC's fast-paced growth, supported by ongoing infrastructure and ambitious development plans, is expected to drive both property value increases and enhanced rental yields. Its strong demand as a sought-after residential area ensures reliable rental income from professionals, families and young couples alike.

Advantages for foreign investors include no property tax and -10year Golden Visa eligibility, solidifying Circle as a truly brilliant investment in a definitive presence.



Where Prestige Meets Property



At Majara Luxury Real Estate L.L.C., we redefine the art of luxury living. Based in the heart of the UAE, we specialize in curating exceptional real estate experiences tailored to the needs of discerning investors, end-users, and global clientele.



With a refined portfolio of premium properties across all seven Emirates, our expertise lies in both off-plan and ready-to-move assets, offering opportunities that blend architectural excellence with investment potential.



We are more than just property consultants & we are partners in your journey to finding the perfect home, investment, or lifestyle. Driven by integrity, market insight, and personalized service, Majara stands as a trusted name in an ever-evolving market.

Contact Us :

Phone: +971564452803

Email: info@majararealestate.com

<https://majararealestate.com/>