

AL JADDAF

LEILY



MAJARA LUXURY REAL ESTATE LLC

Head Office Level 36-01, Po Box :124382 , Trade Center 1, Sheikh Zayed Road , Burj Al Salam Tower Dubai UAE

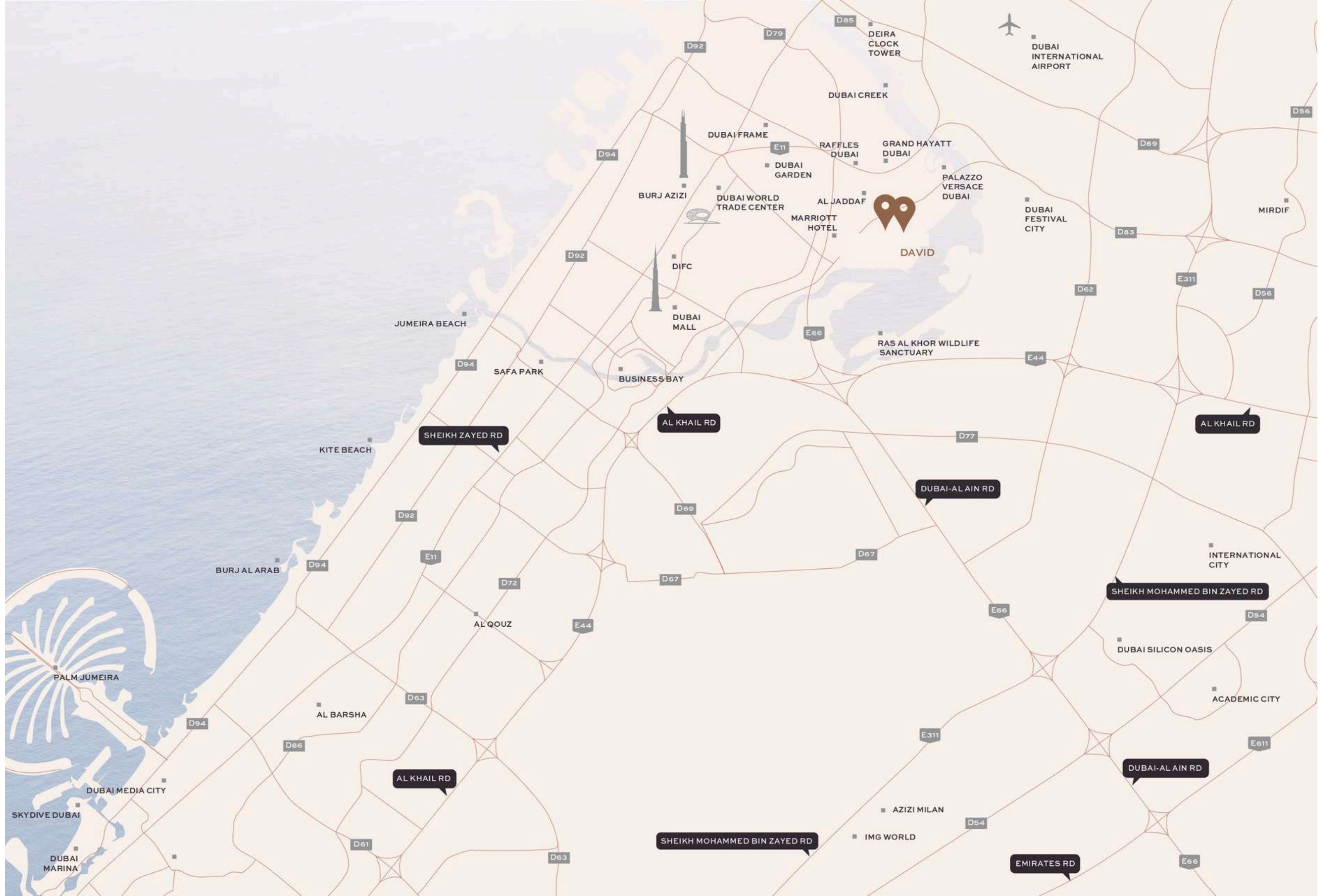


Experience Leily at Al Jaddaf, Dubai — Presented by Majara

Shaping the Future Through Timeless Heritage

Al Jaddaf: a creekside district where tradition and modernity converge, offering a dynamic mix of culture, luxury residences, and seamless access to the city.





An aerial photograph of a complex multi-level highway interchange in Dubai. The image shows several levels of elevated roads with multiple lanes, curving and intersecting. A train is visible on an elevated track that runs diagonally across the upper part of the frame. The roads are filled with cars and buses. There are green landscaped areas with circular patterns between the road levels. The lighting suggests it's either early morning or late afternoon, with long shadows.

Connecting You to Life, Leisure, and Legacy

Centrally positioned, Al Jaddaf offers effortless access to Dubai's key destinations. Just minutes from Downtown Dubai, Dubai Festival City, and Dubai International Airport, it is a neighborhood where convenience seamlessly blends with everyday living.

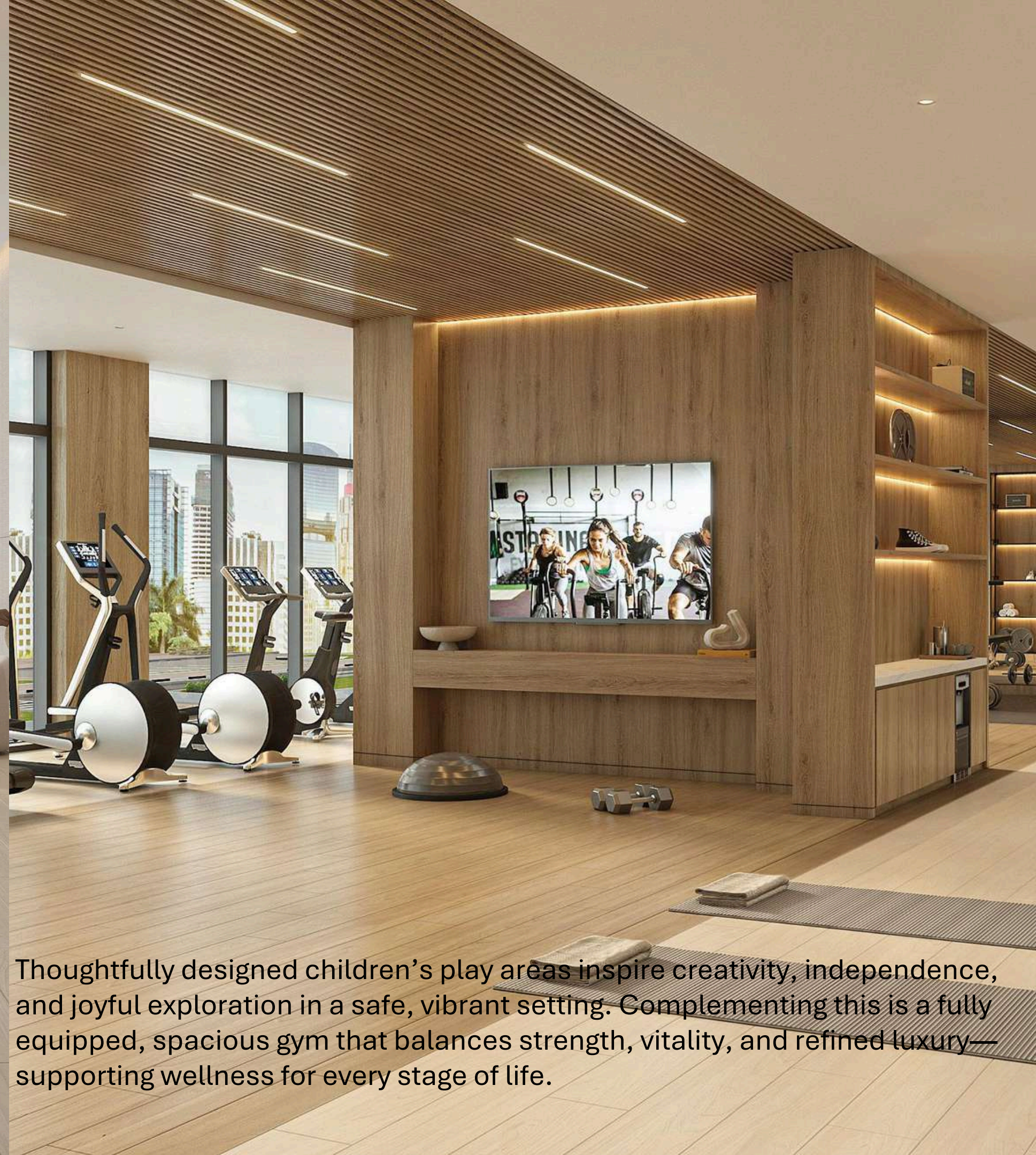
Enjoy a thoughtfully curated selection of world-class retail and dining experiences. From favorite boutiques and signature restaurants to charming neighborhood cafés, everything you love is just steps away. Whether fine dining or casual bites, luxury shopping or everyday essentials, convenience and indulgence seamlessly converge at your doorstep.





Curated Urban Retail and Dining Experiences





Thoughtfully designed children's play areas inspire creativity, independence, and joyful exploration in a safe, vibrant setting. Complementing this is a fully equipped, spacious gym that balances strength, vitality, and refined luxury—supporting wellness for every stage of life.



Begin your day with a refreshing swim in crystal-clear waters, framed by endless city skyline views. Whether swimming laps, relaxing poolside, or unwinding in the shade, the infinity pool transforms everyday moments into effortless indulgence.

LEILY




Where the harmony of the creekside meets the drama of the skyline, a prestigious address rises—Leily. Offering elegant studios, refined one- and two-bedroom residences, and two distinguished penthouses, the development embodies modern sophistication.

Residents enjoy an exceptional array of lifestyle amenities, including curated retail, sauna and steam rooms, a fully equipped gym, swimming pools, indoor and outdoor children's play areas, a private cinema, a multipurpose hall, and a serene rooftop garden. Thoughtfully designed facilities for people of determination further reflect a commitment to comfort, inclusivity, and elevated living.



Every detail is thoughtfully crafted to balance beauty, comfort, and functionality. Curated interiors and panoramic creek views create a serene haven where refined style and effortless living come together.



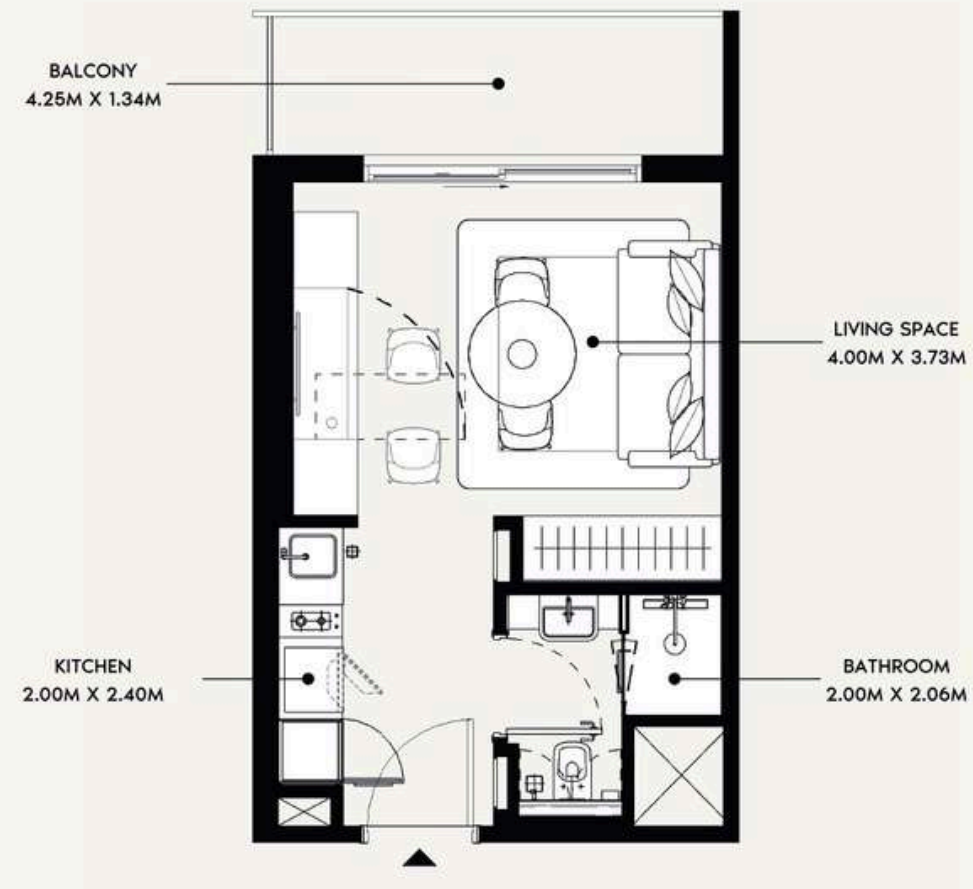
A modern bedroom interior featuring a large, low-profile bed with a light-colored headboard and footboard. The bed is dressed in white linens, a brown throw blanket, and a blue blanket. Several pillows, including a patterned one and a brown velvet one, are on the bed. To the left of the bed is a wooden desk with a modern, curved chair. To the right is a wooden nightstand with a white lamp. A large floor-to-ceiling window with sheer curtains provides a view of a city skyline and a balcony with outdoor furniture. The room has a warm, ambient lighting scheme and a large, textured rug.

Imagine a private retreat away from the city's rhythm, where each day begins and ends in serenity. Warm ambient lighting and floor-to-ceiling windows invite natural beauty indoors, creating a bedroom designed for comfort, privacy, and calm.

LEILY - FLOOR PLAN

STUDIO TYPE 1

2ND TO 11TH FLOORS



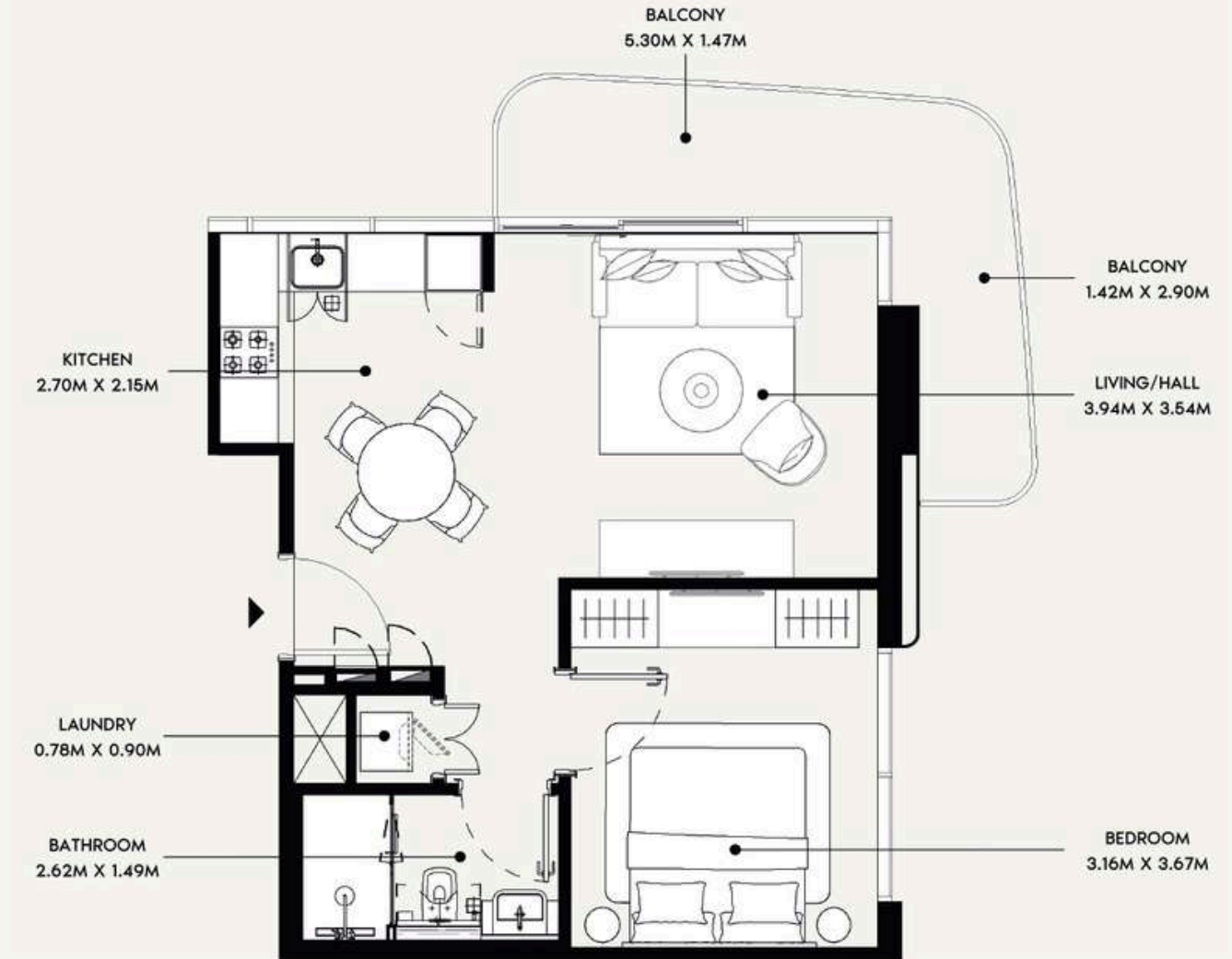
SUITE AREA : 278.25 SQ. FT.
TOTAL AREA : 348.54 SQ. FT.

TYPICAL UNITS

LEILY - FLOOR PLAN

1 BEDROOM TYPE 1

2ND TO 11TH FLOORS



SUITE AREA : 523.13 SQ. FT.
TOTAL AREA : 641.96 SQ. FT.

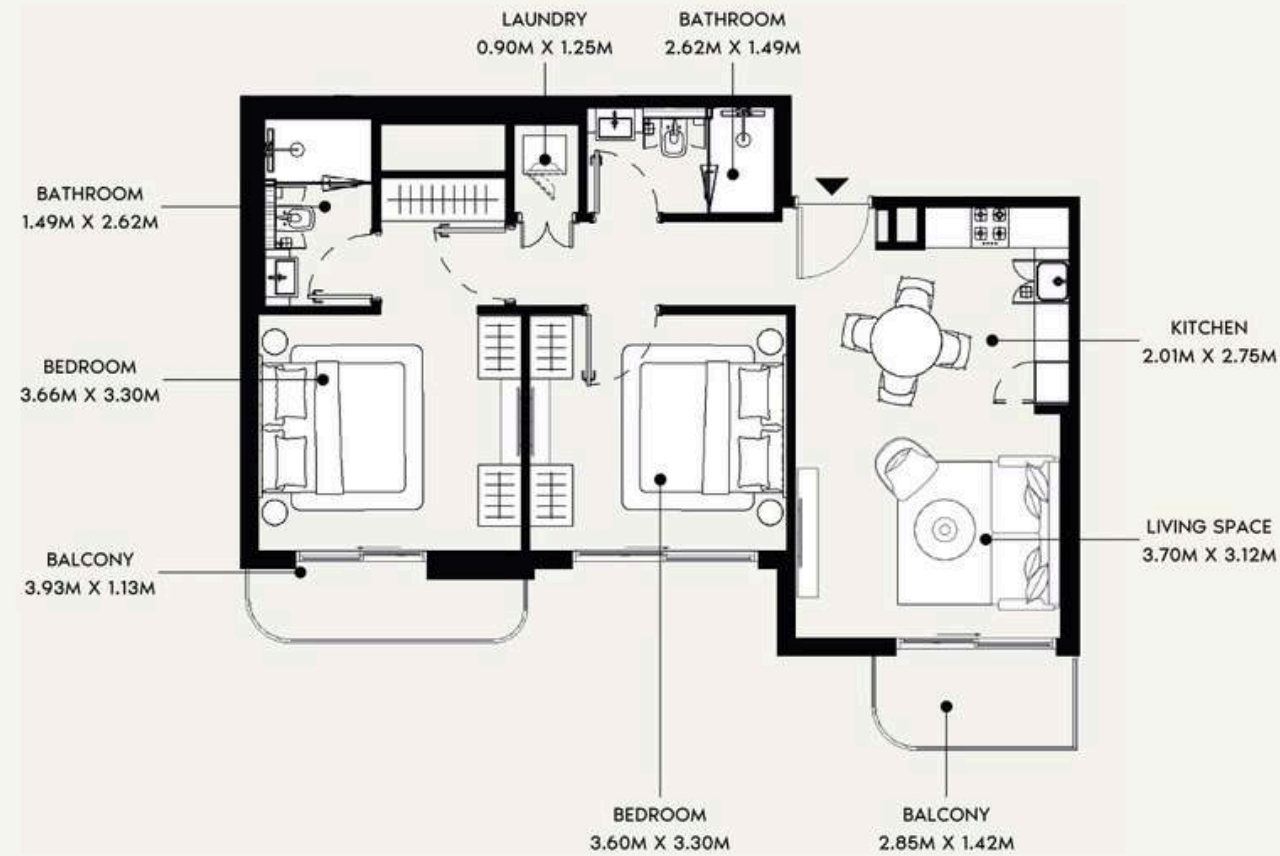
TYPICAL UNITS



LEILY - FLOOR PLAN

2 BEDROOM TYPE 1

12TH TO 13TH FLOORS



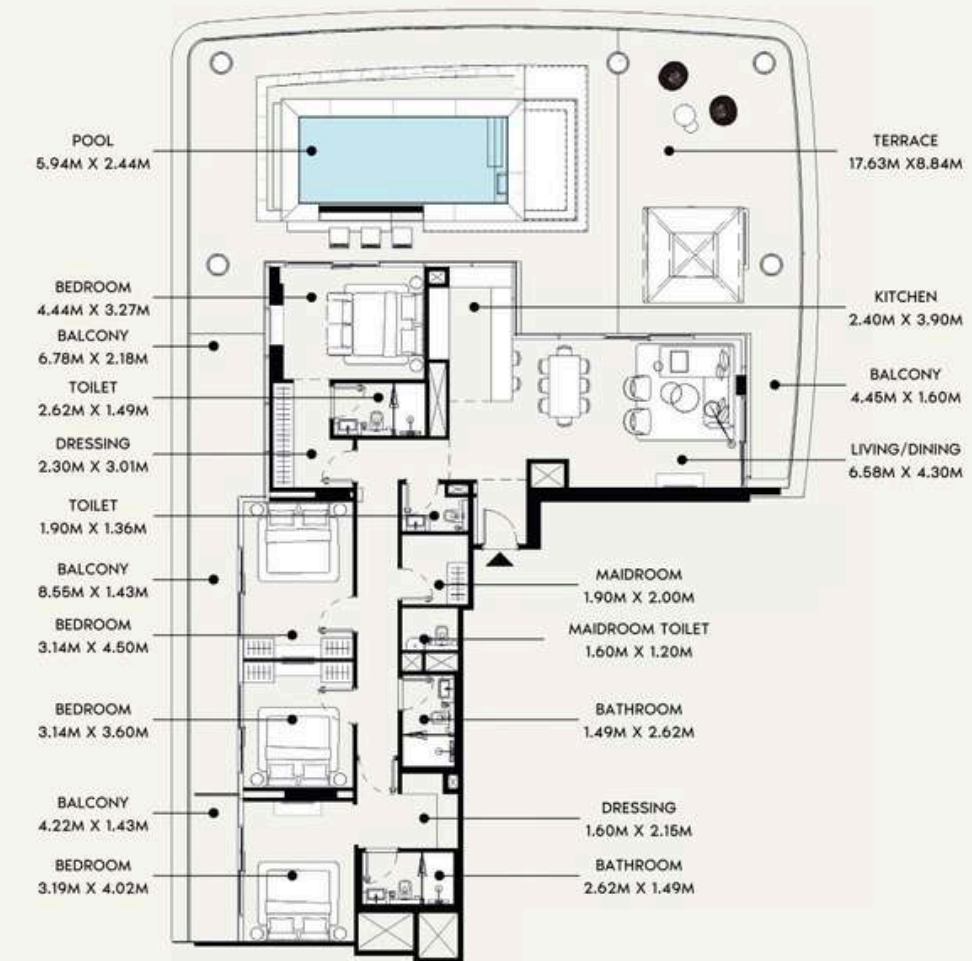
SUITE AREA : 757.57 SQ.FT.
TOTAL AREA : 847.34 SQ.FT.

TYPICAL UNITS

LEILY - FLOOR PLAN

PENTHOUSE TYPE 1

16TH FLOOR



SUITE AREA : 1,689.63 SQ.FT.
TOTAL AREA : 3,481.51 SQ.FT.

TYPICAL UNITS



Where Prestige Meets Property



At Majara Luxury Real Estate L.L.C., we redefine the art of luxury living. Based in the heart of the UAE, we specialize in curating exceptional real estate experiences tailored to the needs of discerning investors, end-users, and global clientele.



With a refined portfolio of premium properties across all seven Emirates, our expertise lies in both off-plan and ready-to-move assets, offering opportunities that blend architectural excellence with investment potential.



We are more than just property consultants & we are partners in your journey to finding the perfect home, investment, or lifestyle. Driven by integrity, market insight, and personalized service, Majara stands as a trusted name in an ever-evolving market.

Contact Us :

Phone: +971564452803

Email: info@majararealestate.com

<https://majararealestate.com/>