



LINA

Lina Residence – Elegance Redefined in Downtown Jebel Ali

MAJARA LUXURY REAL ESTATE LLC

Head Office Level 36-01, Po Box :124382 , Trade Center 1, Sheikh Zayed Road , Burj Al Salam Tower Dubai UAE

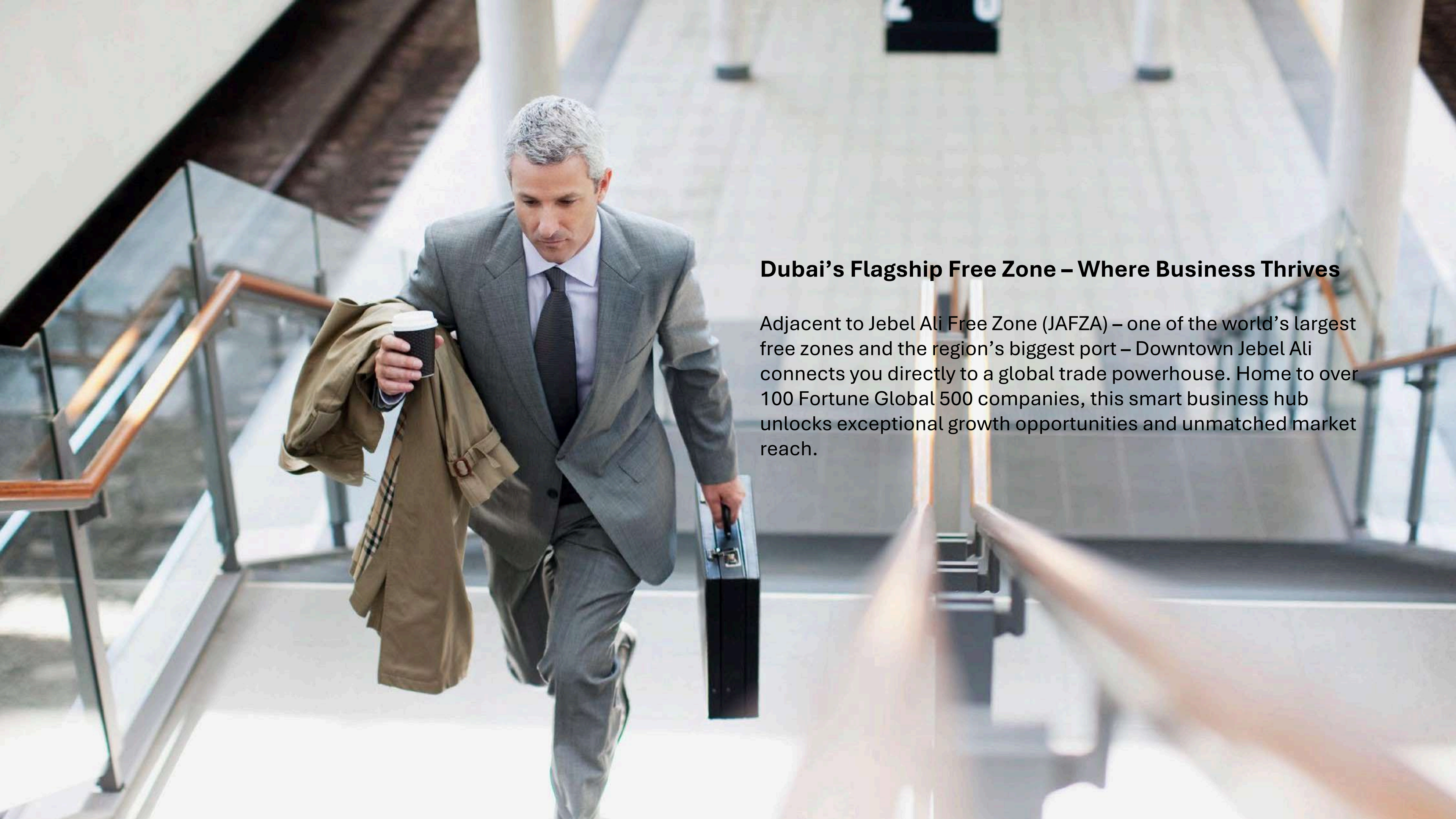


Majara Presents Lina Residences – Refined Living in Downtown Jebel Ali

A photograph of a modern architectural scene at night. On the left is a tall, curved building with a glass facade, its interior lights glowing. A curved pedestrian bridge with a glass railing runs along the side of this building. Several people are walking on the bridge, their figures slightly blurred. To the right is another building with a grid of small, illuminated square windows. A street lamp is visible in the distance, casting a warm glow. The sky is dark, and the overall atmosphere is one of a vibrant, modern urban environment.

Downtown Jebel Ali

Central. Accessible. Unmatched.

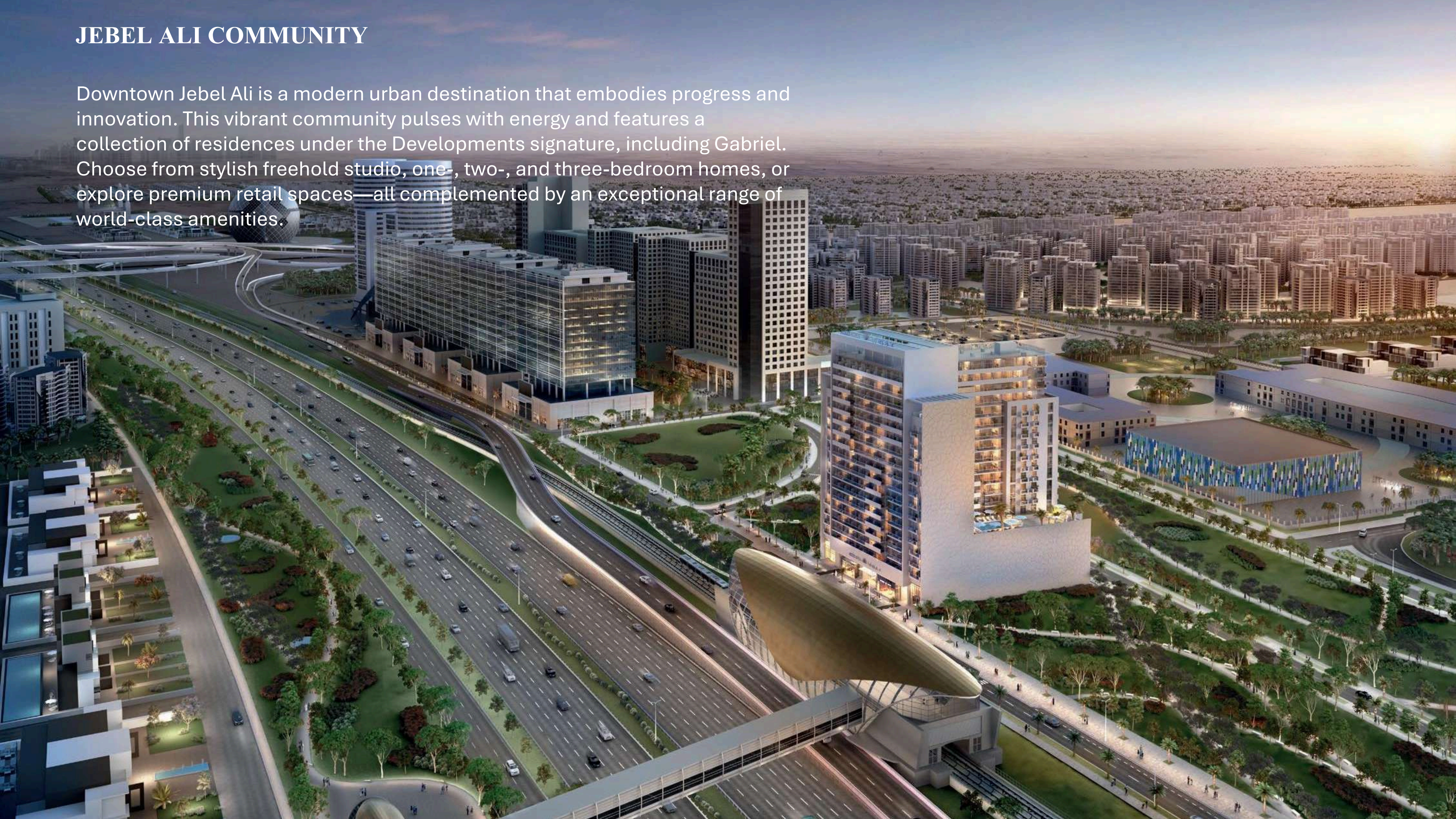


Dubai's Flagship Free Zone – Where Business Thrives

Adjacent to Jebel Ali Free Zone (JAFZA) – one of the world's largest free zones and the region's biggest port – Downtown Jebel Ali connects you directly to a global trade powerhouse. Home to over 100 Fortune Global 500 companies, this smart business hub unlocks exceptional growth opportunities and unmatched market reach.

JEBEL ALI COMMUNITY

Downtown Jebel Ali is a modern urban destination that embodies progress and innovation. This vibrant community pulses with energy and features a collection of residences under the Developments signature, including Gabriel. Choose from stylish freehold studio, one-, two-, and three-bedroom homes, or explore premium retail spaces—all complemented by an exceptional range of world-class amenities.

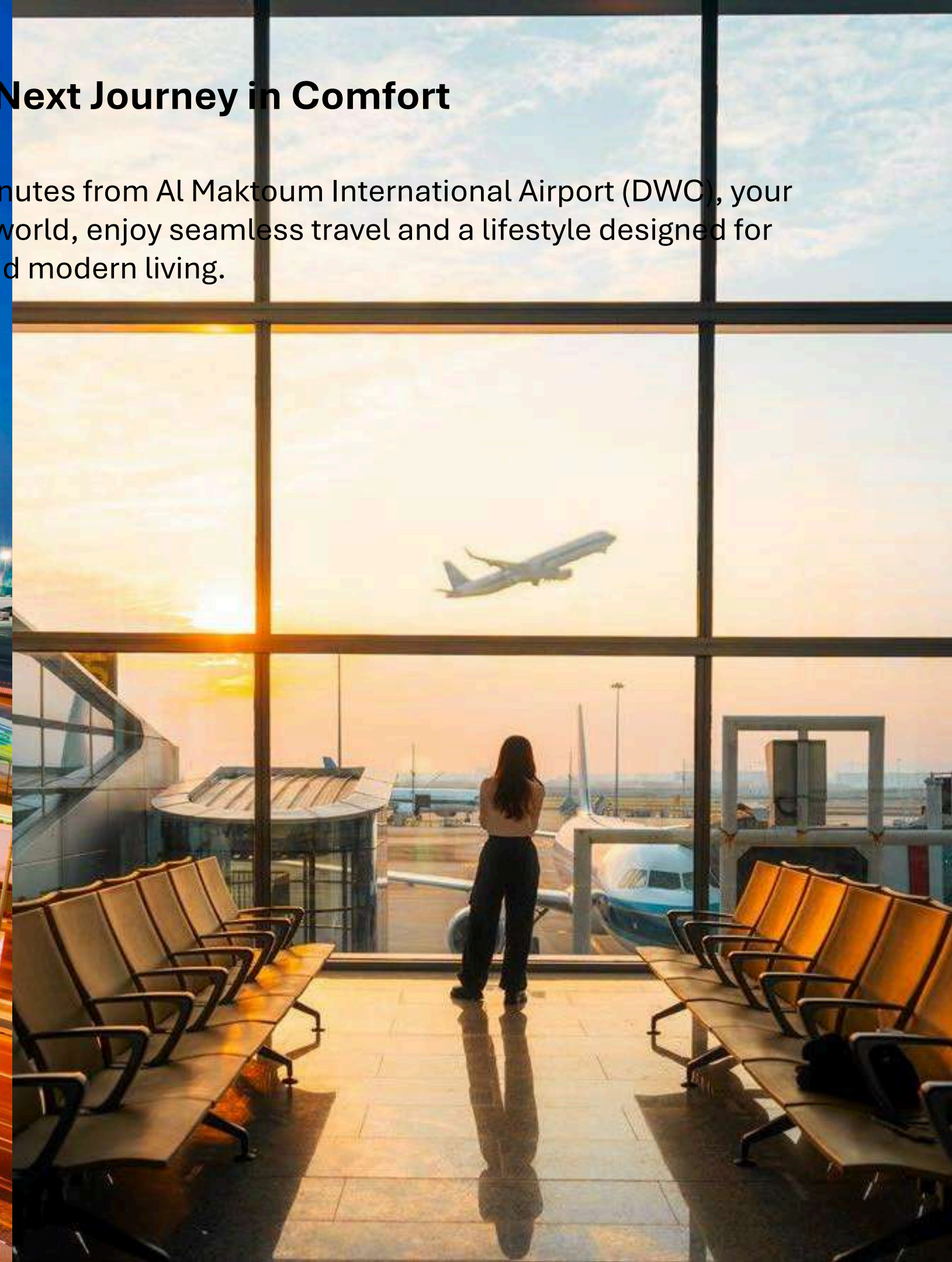


Begin Your Next Journey in Comfort

Located just minutes from Al Maktoum International Airport (DWC), your gateway to the world, enjoy seamless travel and a lifestyle designed for convenience and modern living.

Every Adventure Starts at Your Doorstep

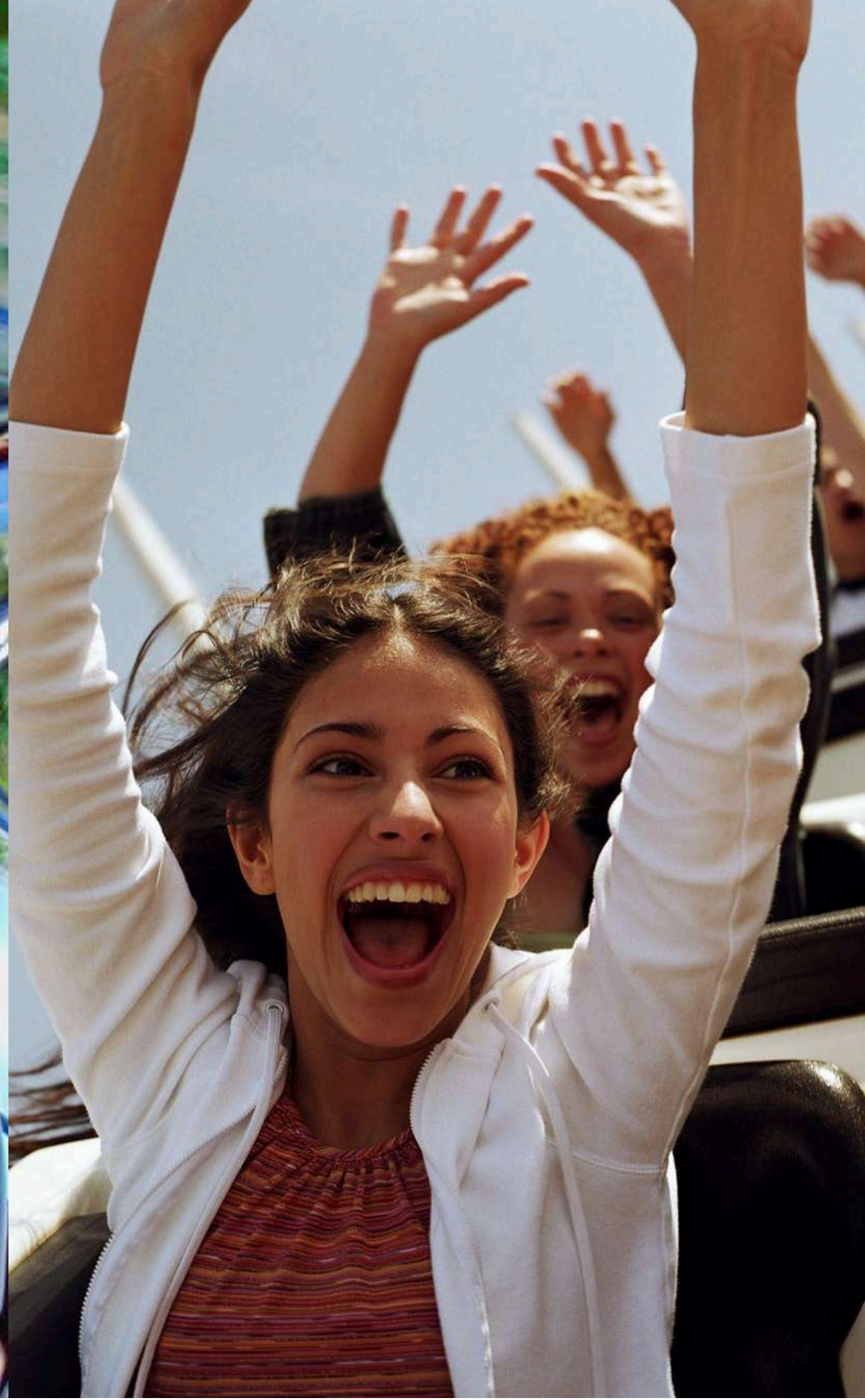
Enjoy seamless city exploration with effortless access to the metro, connecting you to Dubai's most exciting destinations.



Discover Unbeatable Deals on Top Brands

Experience a vibrant shopping destination where style, savings, and excitement come together.





1 شارع الشيخ زايد
9 دقائق
SHEIKH ZAYED ROAD
9 minutes

2 ابن بطوطة مول
10 دقائق
IBN BATTUTA MALL
10 minutes

3 محطة المترو
10 دقائق
THE METRO STATION
10 minutes

4 دبي آر
14 دقيقة
JBR
14 minutes

5 دبي مارينا
15 دقيقة
DUBAI MARINA
15 minutes

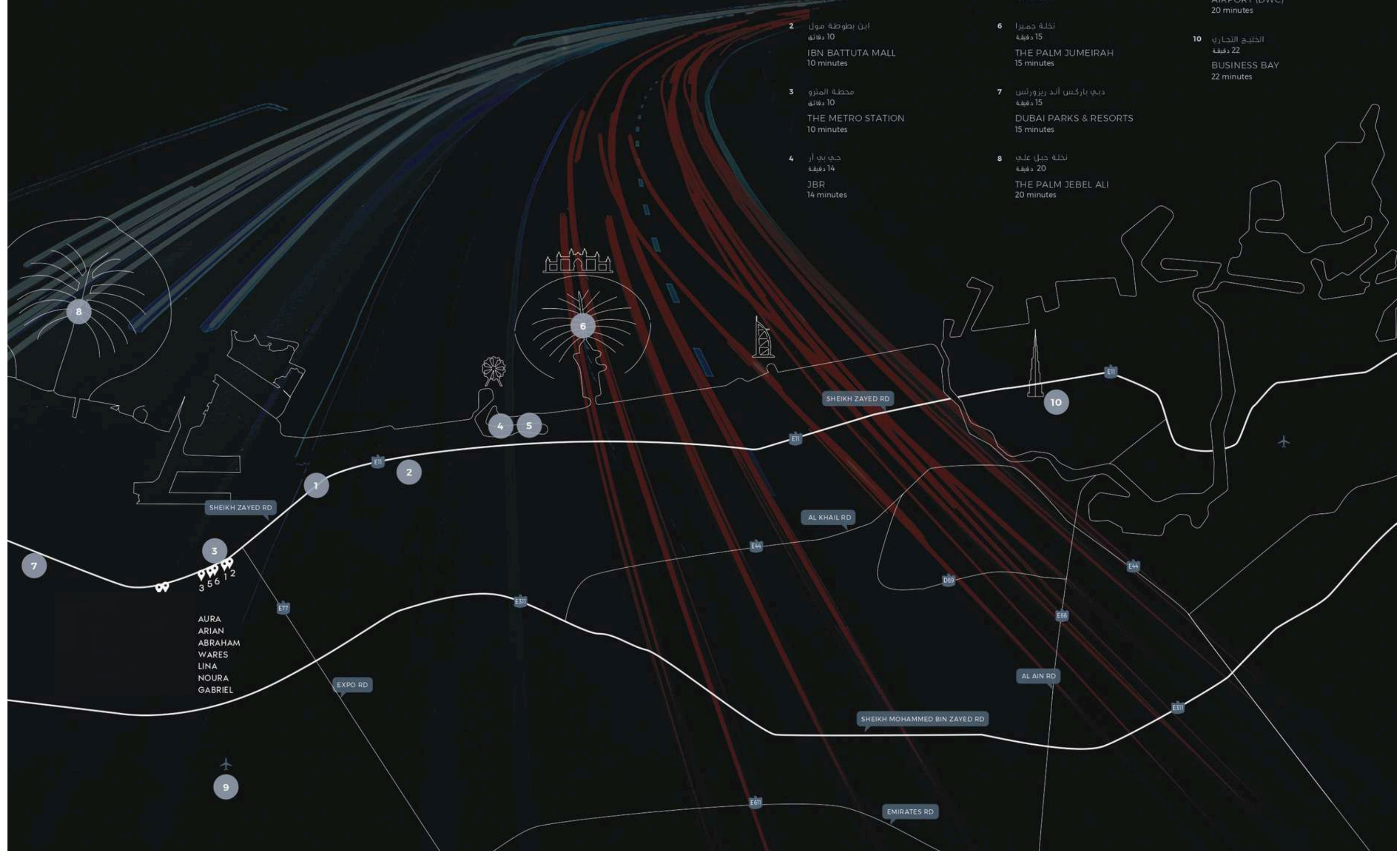
6 نخلة جميرا
15 دقيقة
THE PALM JUMEIRAH
15 minutes

7 دبي باركس أند ريزورتس
15 دقيقة
DUBAI PARKS & RESORTS
15 minutes

8 نخلة جبل علي
20 دقيقة
THE PALM JEBEL ALI
20 minutes

9 مطار آل مكتوم الدولي
20 دقيقة
AL MAKTOUM INTERNATIONAL
AIRPORT (DWC)
20 minutes

10 الخليج التجاري
22 دقيقة
BUSINESS BAY
22 minutes





LINA



At the crossroads of trade, travel, and lifestyle, **Lina Residences** rises in Downtown Jebel Ali — a luminous gateway to Dubai and the world. Positioned adjacent to JAFZA and more than 100 Fortune Global 500 companies, it sits at the very heart of global commerce. With direct access to Sheikh Zayed Road, the metro just steps away, and Dubai Marina, Expo City, and Palm Jebel Ali within easy reach, life here unfolds with effortless grace — where professional ambitions and leisurely pursuits find their perfect harmony.

A Retreat Defined by Comfort and Grace



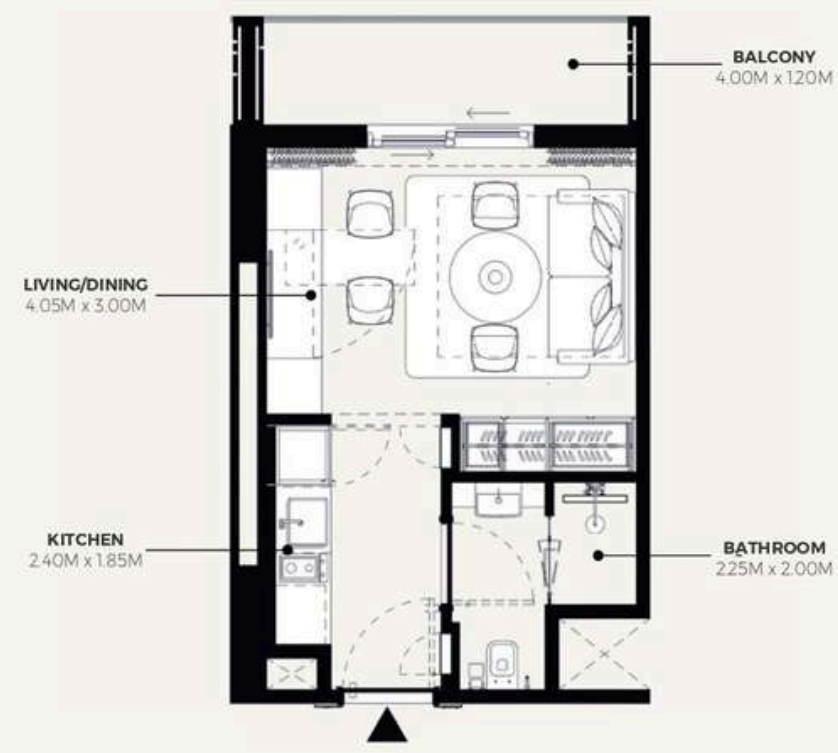
Light-Filled Spaces, Elevated Living



LINA - FLOOR PLAN

STUDIO TYPE 1

2ND TO 9TH FLOORS



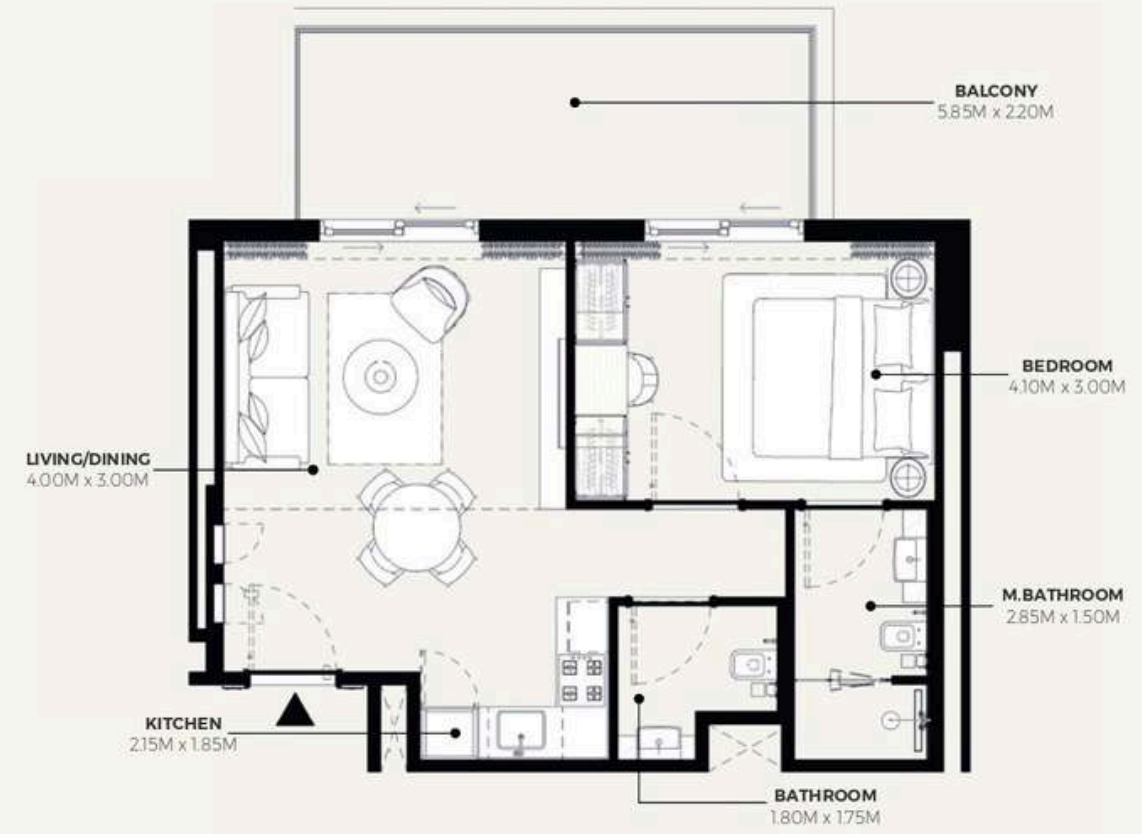
SUITE AREA : 261.13 SQ.FT.
TOTAL AREA : 327.12 SQ.FT.

TYPICAL UNITS

LINA - FLOOR PLAN

1 BEDROOM TYPE 1

2ND TO 9TH FLOORS

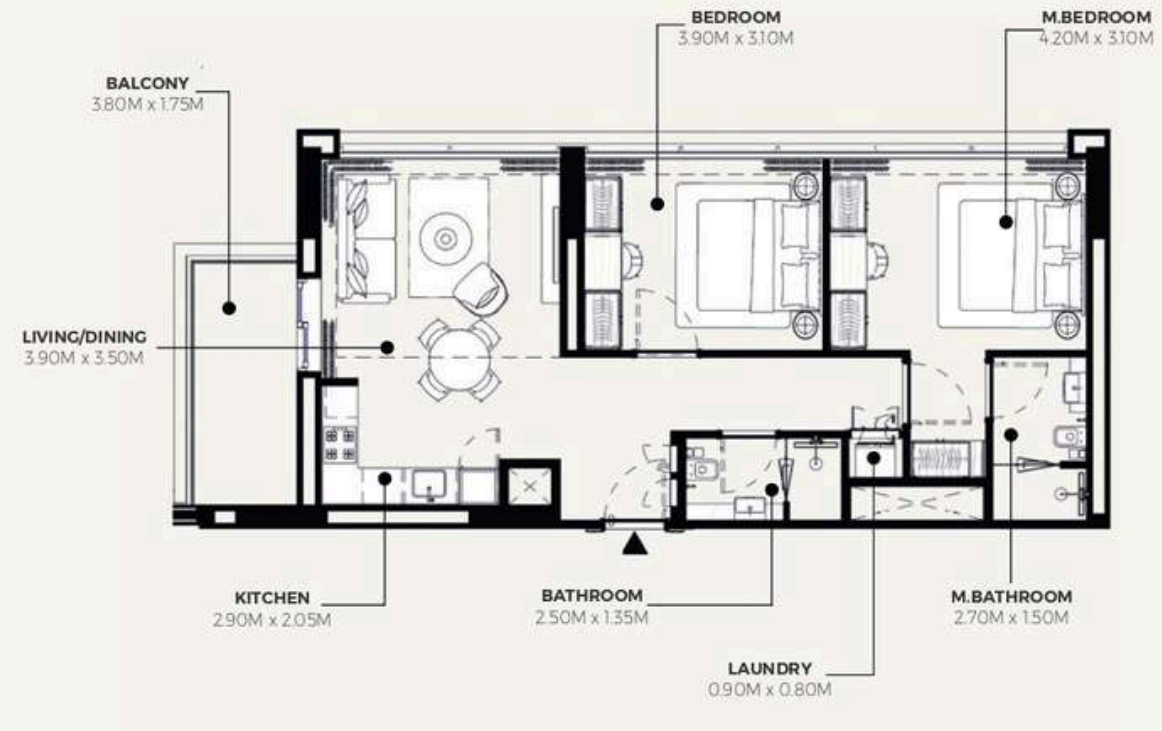


SUITE AREA : 527.54 SQ.FT.
TOTAL AREA : 669.74 SQ.FT.

TYPICAL UNITS



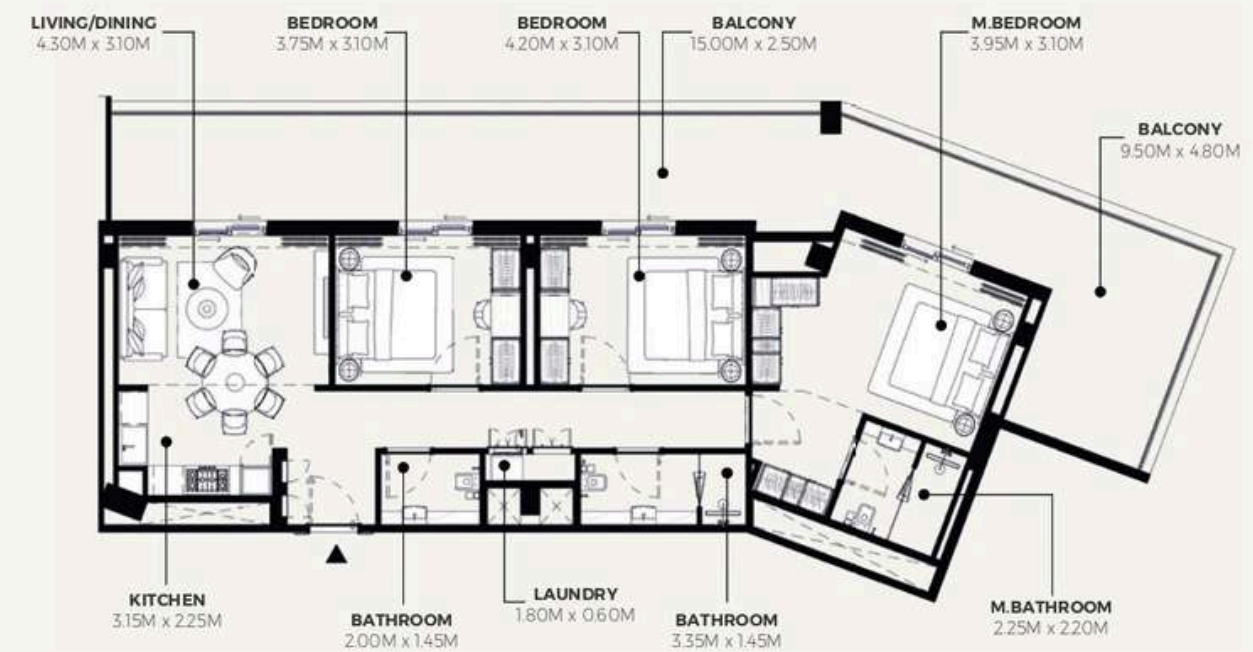
LINA - FLOOR PLAN
2 BEDROOM TYPE 1
2ND TO 9TH FLOORS



SUITE AREA : 815.80 SQ.FT.
TOTAL AREA : 899.12 SQ.FT.

TYPICAL UNITS

LINA - FLOOR PLAN
3 BEDROOM TYPE 1
P01 TO P03 FLOORS



SUITE AREA : 1,110.52 SQ.FT.
TOTAL AREA : 1,758.73 SQ.FT.

TYPICAL UNITS





Where Prestige Meets Property



At Majara Luxury Real Estate L.L.C., we redefine the art of luxury living. Based in the heart of the UAE, we specialize in curating exceptional real estate experiences tailored to the needs of discerning investors, end-users, and global clientele.



With a refined portfolio of premium properties across all seven Emirates, our expertise lies in both off-plan and ready-to-move assets, offering opportunities that blend architectural excellence with investment potential.



We are more than just property consultants & we are partners in your journey to finding the perfect home, investment, or lifestyle. Driven by integrity, market insight, and personalized service, Majara stands as a trusted name in an ever-evolving market.

Contact Us :

Phone: +971564452803

Email: info@majararealestate.com

<https://majararealestate.com/>