



HILLCREST

MAJARA LUXURY REAL ESTATE LLC

Head Office Level 36-01, Po Box :124382 , Trade Center 1, Sheikh Zayed Road , Burj Al Salam Tower Dubai UAE



Majara Offers: Luxury Living at Hillcrest, Arjan



Hillcrest

Safety, Space, and Scenic Views –
A Community in Perfect Balance





Redefining the Geometry of Space and Balance

Hillcrest Residence Rise-Low is thoughtfully designed to offer a flowing, natural shape that opens toward calm, green spaces. Expansive windows and clean, modern lines maximize light, connecting residents to nature while creating a grounded, peaceful atmosphere. The layout fosters a balanced lifestyle, where energy and serenity coexist seamlessly. Every space emphasizes openness, harmony, and a sense of calm. This residence transforms everyday living into an experience of tranquility and connection with the surroundings.

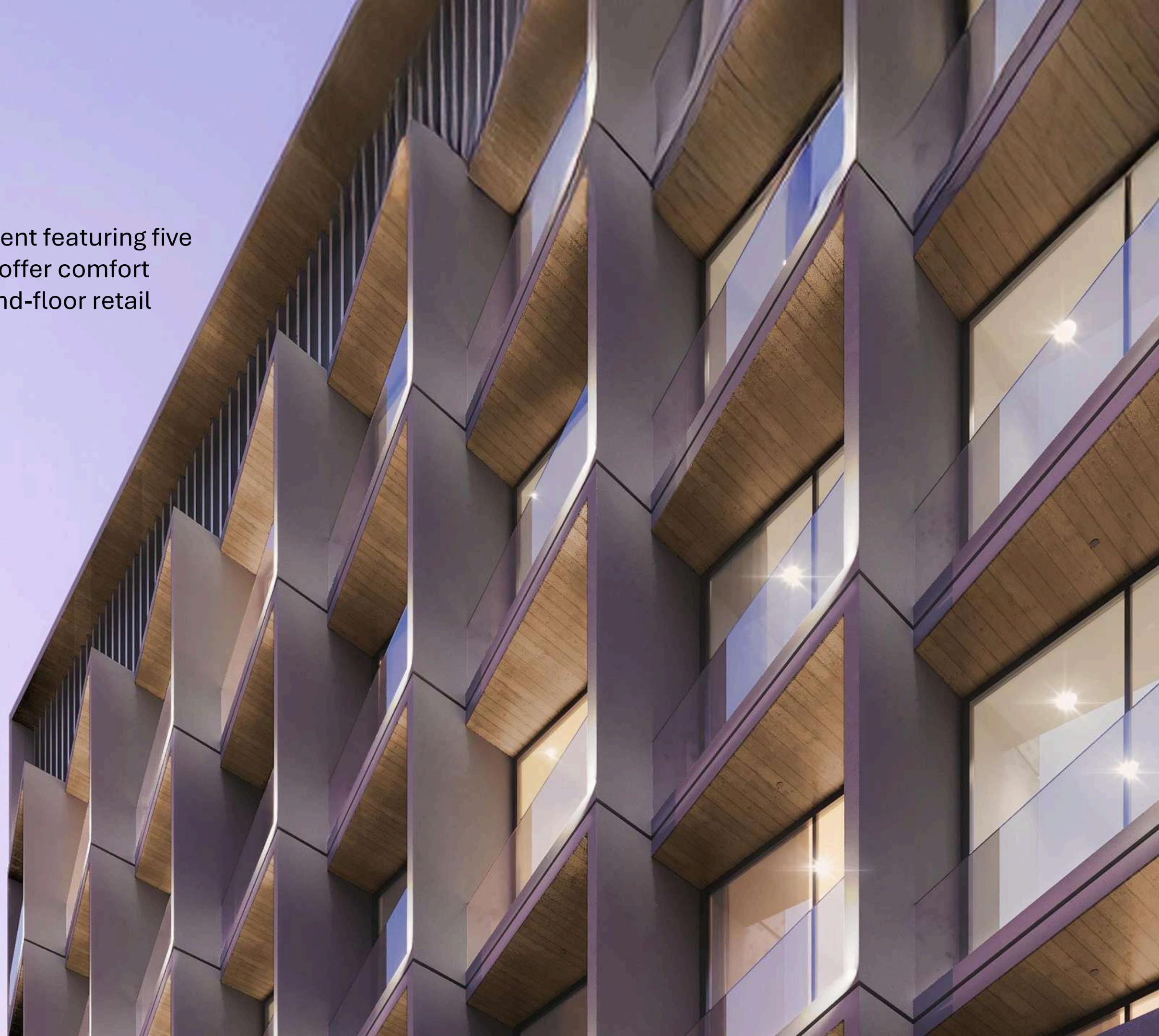


Structures Rooted in Equilibrium

Hillcrest, Arjan rises above the quiet horizon, a place where balance is rare and precise, offering a private sanctuary between the city's energies. Its curved design stands apart from the straight lines of the surroundings, creating a gentle, peaceful presence. Here, equilibrium is imperative, allowing residents to experience calm and serenity while remaining connected to the vibrant city below. Every element is thoughtfully positioned to harmonize energy, space, and tranquility. This is a residence where the art of balance shapes both life and environment.

Hillcrest

Hillcrest, Arjan is a modern, family-focused development featuring five residences over two levels. Thoughtfully planned units offer comfort and convenience, complemented by 28 exclusive ground-floor retail shops for added lifestyle ease.







Precision in Every Detail, Inspiration in Every Space

Hillcrest stands as a testament to uncompromising standards, embracing energy-efficient building practices throughout. Each residence showcases exceptional craftsmanship, with sustainable, high-end materials thoughtfully used to create a home that reflects environmental responsibility. Designed with intentionality, every space embodies grace, lightness, and enduring value—crafting a living experience that will define your home for years to come.

In this city, composure reigns supreme, where strategic placement meets deliberate stillness, creating a sanctuary of measured calm.



Hillcrest is designed to nurture quiet confidence, where life moves at a measured pace with family at its heart. It offers a lifestyle in step with calm, allowing the flow of well-lived, flourishing family life to take center stage. Here, the hush of privacy replaces the city's rush, while the gentle rustle of leaves and the sound of laughter bring warmth and richness to every moment.





A modern interior space featuring two plush, olive-green armchairs with a curved, cocoon-like design. Between them is a round, white marble coffee table with a thin metal frame. On the table are some decorative items: a small dark bottle, a white box, and a book. To the left, a light-colored wooden side table holds a few more decorative objects. The floor is made of light-colored wood, and a textured, light-colored rug is partially visible in the foreground. Large windows in the background let in bright, natural light, showing a glimpse of a cityscape outside.

Project Facts

Property Type

Residential & Retail

Plot Area

11090.47 SQM/119376.85 SQFT

Description

B + G + 4 RESIDENTIAL FLOORS + ROOF

Number of Units

Studio Apt. 180

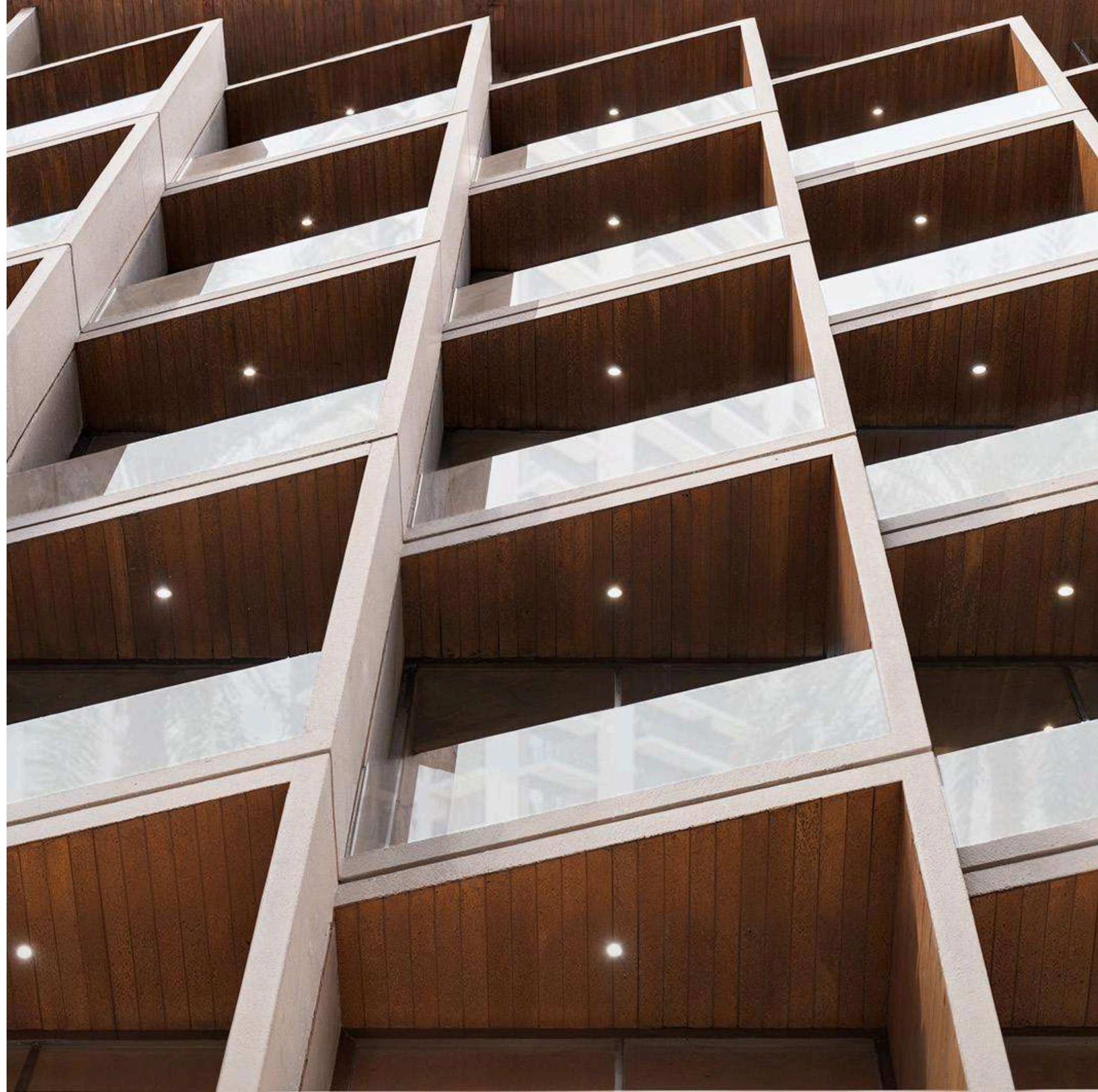
1-Bed Apt. 138

2-Bed Apt. 04

TOTAL RESIDENTIAL UNITS: 322

RETAIL SHOPS (Ground Floor): 28

The Rise-Low features a distinctive curved façade, maximizing sunlight and connectivity, while offering a unique blend of community, exclusivity, and modern living.



Embrace unparalleled convenience and comfort, where every detail of your home and bespoke concierge services are precisely tailored to elevate your living experience.

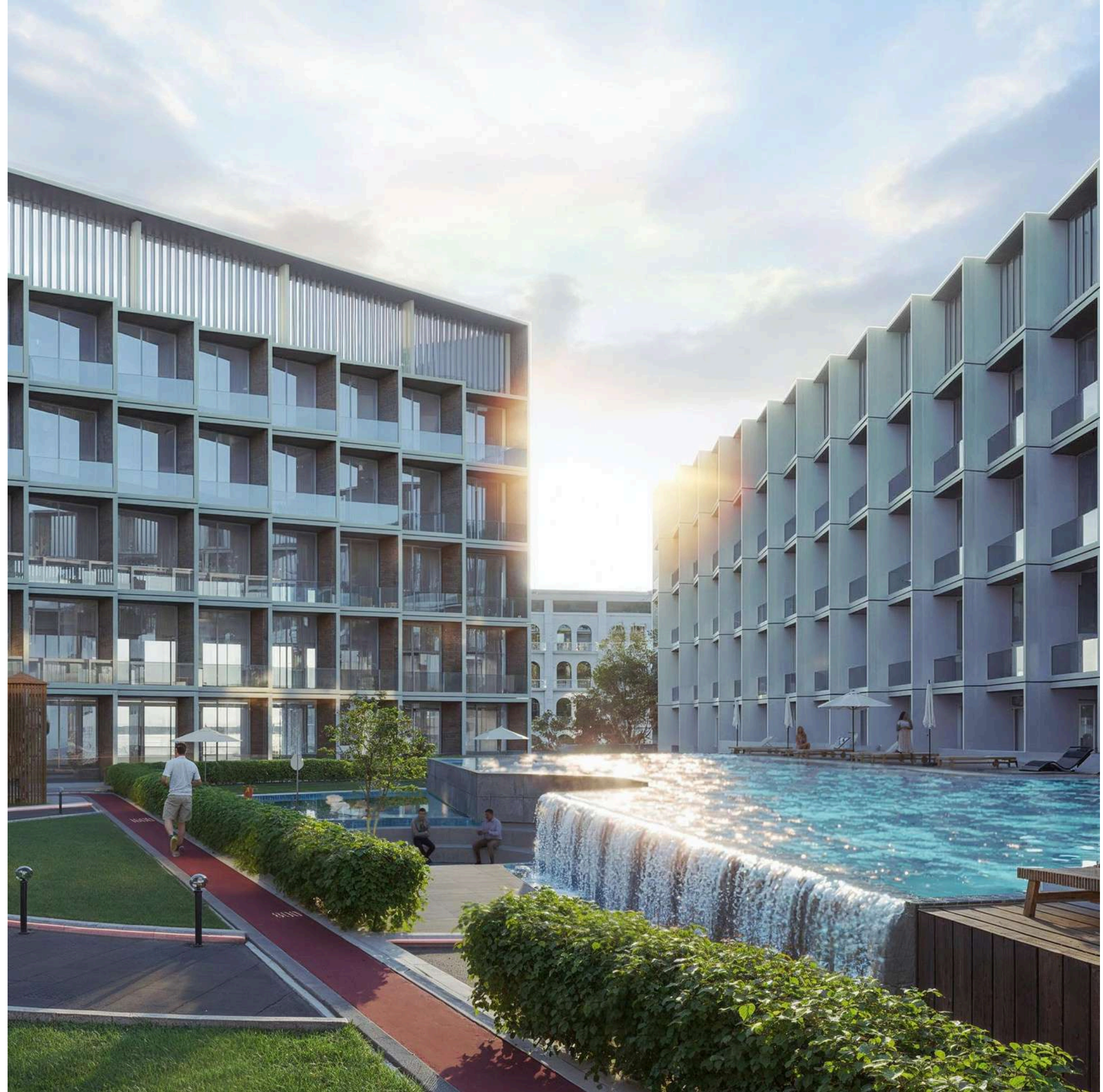


Exquisite Craftsmanship, Smart Living

Residences offer sophisticated interiors with smart technology, sustainable materials, and 24/7 security for seamless, secure living.



Hillcrest offers a comprehensive range of thoughtfully designed amenities, including adult and kids' pools, a dedicated yoga area, jogging track, and extensive green spaces with benches and walkways—creating a safe, vibrant community where wellness, leisure, and childhood flourish.







Connected to the City, Grounded in Ease

Hillcrest offers effortless connectivity to every corner of Dubai. The location provides quick access to major road networks: Sheikh Mohammed Bin Zayed Road, Shaikh Zayed Road, Umm Suqeim Road and Hessa Street. Key areas such as Dubai Hills, Dubai Science Park and Motor City are minutes away. The area is further well-positioned for future growth, with Metro expansions and infrastructure upgrades enhancing connectivity and property value.



Amenities



Yoga Area



Adult pool



Kids pool



Jogging Track



Kids play area



Sunken seating



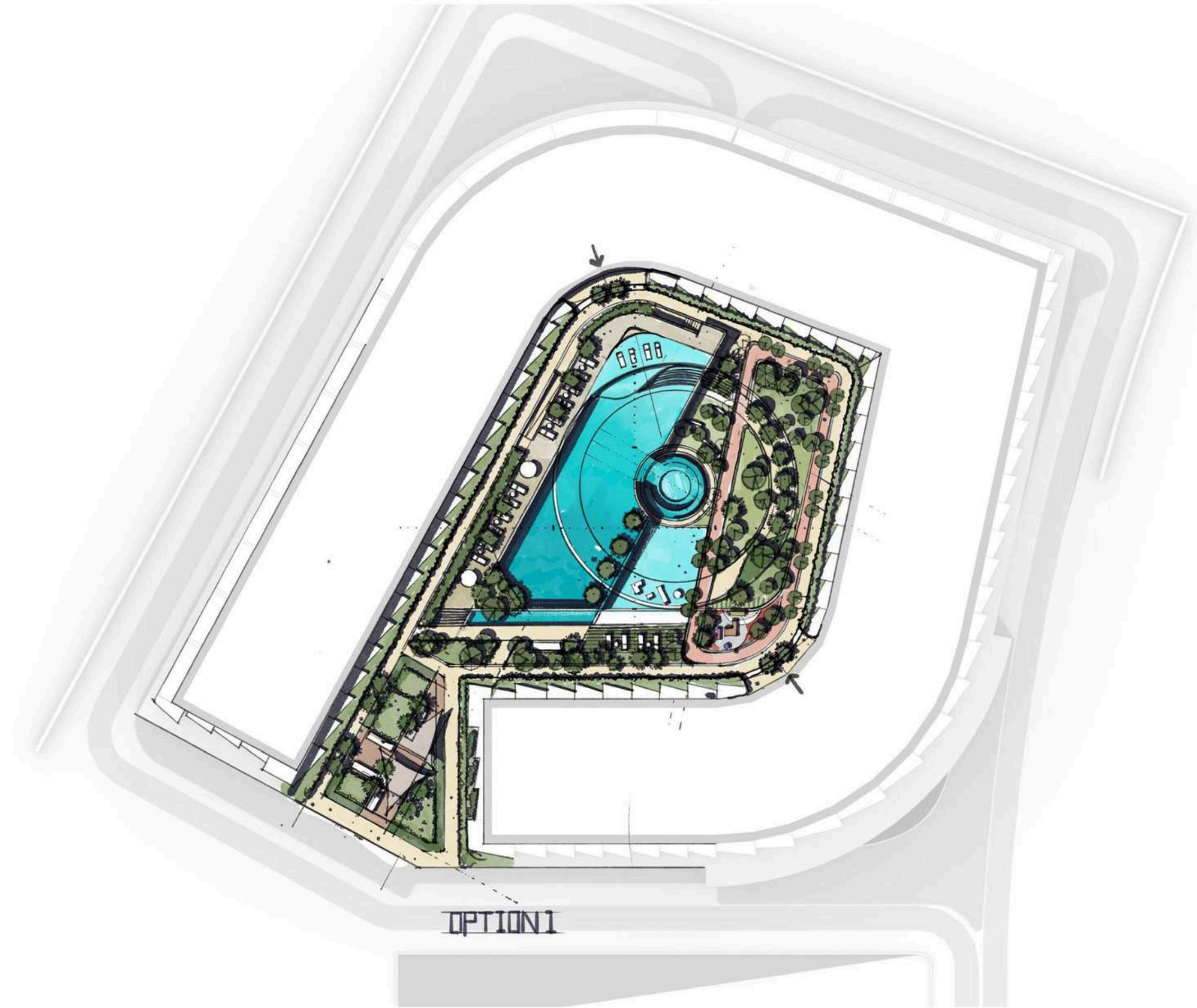
Green Spaces



Seating areas

FLOOR PLAN

Ground Floor Floor Plan

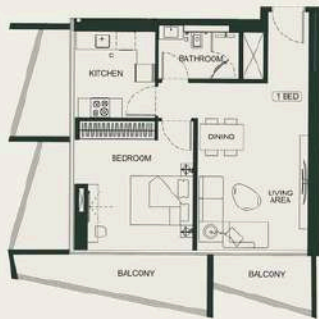


TYPICAL FLOOR PLAN



1ST FLOOR PLAN

1 BEDROOM TYPE 01



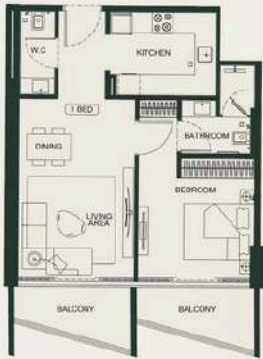
AREA	SQ. M.	SQ. FT.
UNIT AREA	24.18 m ²	260.27
BALCONY AREA	3.50 m ²	37.71
TOTAL UNIT AREA	27.68 m ²	297.98

FLAT DESIGN COMPONENTS

BATHROOM	6.00 m ²	64.75
BEDROOM	10.00 m ²	107.64
LIVING & DINING	10.00 m ²	107.64
KITCHEN	4.00 m ²	43.06



1 BEDROOM TYPE 02



AREA	SQ. M.	SQ. FT.
UNIT AREA	24.18 m ²	260.27
BALCONY AREA	3.50 m ²	37.71
TOTAL UNIT AREA	27.68 m ²	297.98

FLAT DESIGN COMPONENTS

BATHROOM	6.00 m ²	64.75
BEDROOM	10.00 m ²	107.64
LIVING & DINING	10.00 m ²	107.64
KITCHEN	4.00 m ²	43.06



1 BEDROOM TYPE 03



AREA	SQ. M.	SQ. FT.
UNIT AREA	24.18 m ²	260.27
BALCONY AREA	3.50 m ²	37.71
TOTAL UNIT AREA	27.68 m ²	297.98

FLAT DESIGN COMPONENTS

BATHROOM	6.00 m ²	64.75
BEDROOM	10.00 m ²	107.64
LIVING & DINING	10.00 m ²	107.64
KITCHEN	4.00 m ²	43.06



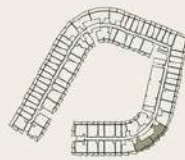
1 BEDROOM TYPE 04



AREA	SQ. M.	SQ. FT.
UNIT AREA	24.18 m ²	260.27
BALCONY AREA	3.50 m ²	37.71
TOTAL UNIT AREA	27.68 m ²	297.98

FLAT DESIGN COMPONENTS

BATHROOM	6.00 m ²	64.75
BEDROOM	10.00 m ²	107.64
LIVING & DINING	10.00 m ²	107.64
KITCHEN	4.00 m ²	43.06



1 BEDROOM TYPE 07



AREA	sq. m	sq. ft.
SUITE AREA	28.00	302.00
BALCONY AREA	2.00	21.50
TOTAL UNIT AREA	30.00	323.50

FLAT DESIGN COMPONENTS

BATHROOM	4.00	43.00
BEDROOM	12.00	129.00
LIVING & DINING	10.00	107.50



1 BEDROOM TYPE 08



AREA	sq. m	sq. ft.
SUITE AREA	28.00	302.00
BALCONY AREA	2.00	21.50
TOTAL UNIT AREA	30.00	323.50

FLAT DESIGN COMPONENTS

BATHROOM	4.00	43.00
BEDROOM	12.00	129.00
LIVING & DINING	10.00	107.50



1 BEDROOM TYPE 05



AREA	sq. m	sq. ft.
SUITE AREA	28.00	302.00
BALCONY AREA	2.00	21.50
TOTAL UNIT AREA	30.00	323.50

FLAT DESIGN COMPONENTS

BATHROOM	4.00	43.00
BEDROOM	12.00	129.00
LIVING & DINING	10.00	107.50



1 BEDROOM TYPE 06



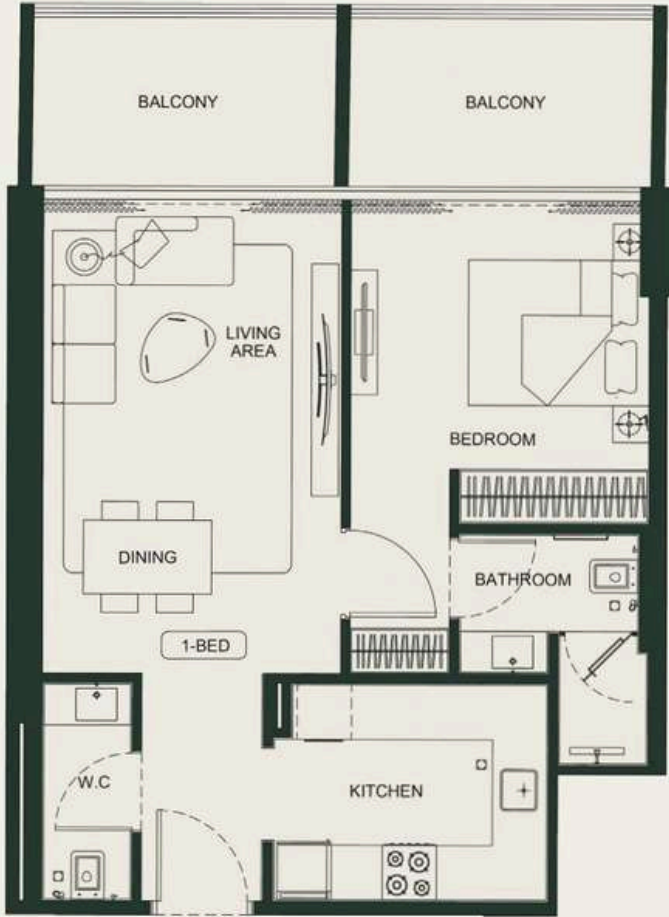
AREA	sq. m	sq. ft.
SUITE AREA	28.00	302.00
BALCONY AREA	2.00	21.50
TOTAL UNIT AREA	30.00	323.50

FLAT DESIGN COMPONENTS

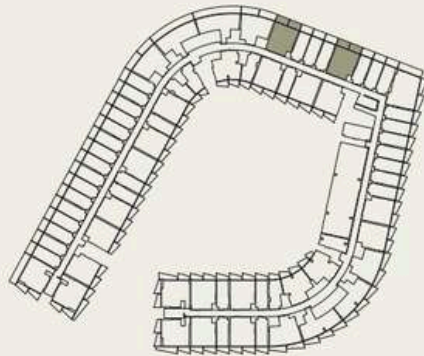
BATHROOM	4.00	43.00
BEDROOM	12.00	129.00
LIVING & DINING	10.00	107.50



1 BEDROOM TYPE 09

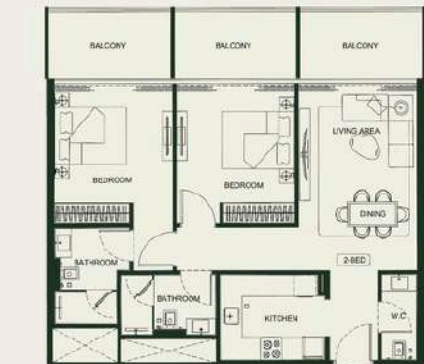


AREA	SQ. M	SQ. FT
SUITE AREA	53.2 m ²	573 ft ²
BALCONY AREA	13.48 m ²	145 ft ²
TOTAL UNIT AREA	66.68 m ²	718 ft ²
FLAT DESIGN COMPONENTS		
BATHROOM	4 m ²	7 m ²
BEDROOM	13 m ²	4 m ²
LIVING & DINING	17 m ²	3 m ²
KITCHEN	7 m ²	
CORRIDOR	4 m ²	
W.C.	3 m ²	





2 BEDROOM TYPE 03



AREA	SQ. M	SQ. FT.
SUITE AREA	71.12 m ²	763.13 sq. ft.
BALCONY AREA	28.94 m ²	311.55 sq. ft.
TOTAL UNIT AREA	100.06 m ²	1074.68 sq. ft.

FLAT DESIGN COMPONENTS			
M. BEDROOM	9 m ²	LIVING & DINING	13 m ²
S. BEDROOM	14 m ²	KITCHEN	7 m ²
BATHROOM	4 m ²	CORRIDOR	8 m ²
BEDROOM	12 m ²	TOILET	4 m ²
		W.C.	2 m ²

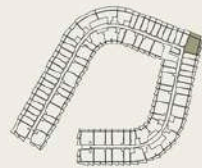


2 BEDROOM TYPE 01



AREA	SQ. M	SQ. FT.
SUITE AREA	70.80 m ²	762.37 sq. ft.
BALCONY AREA	24.30 m ²	262.57 sq. ft.
TOTAL UNIT AREA	95.10 m ²	1024.94 sq. ft.

FLAT DESIGN COMPONENTS			
M. BEDROOM	8 m ²	LIVING & DINING	12 m ²
S. BEDROOM	10 m ²	KITCHEN	7 m ²
BATHROOM	4 m ²	CORRIDOR	7 m ²
BEDROOM	12 m ²	TOILET	3 m ²



2 BEDROOM TYPE 02



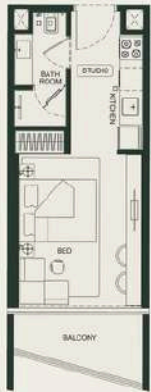
AREA	SQ. M	SQ. FT.
SUITE AREA	72.50 m ²	780.13 sq. ft.
BALCONY AREA	26.84 m ²	288.55 sq. ft.
TOTAL UNIT AREA	99.34 m ²	1068.68 sq. ft.

FLAT DESIGN COMPONENTS			
M. BEDROOM	8 m ²	KITCHEN	7 m ²
S. BEDROOM	14 m ²	TOILET	4 m ²
BATHROOM	4 m ²	W.C.	3 m ²
BEDROOM	12 m ²	CORRIDOR	8 m ²
LIVING & DINING	13 m ²		





STUDIO TYPE 03

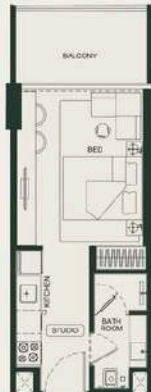


AREA	SQ. M.	SQ. FT.
BATH AREA	2.12 m ²	23.0 ft ²
BALCONY AREA	4.90 m ²	53.0 ft ²
TOTAL UNIT AREA	22.2 m ²	240.0 ft ²

FLAT DESIGN COMPONENTS		
STUDIO	11 m ²	
KITCHEN	7 m ²	
BATH	2 m ²	



STUDIO TYPE 04



AREA	SQ. M.	SQ. FT.
BATH AREA	2.12 m ²	23.0 ft ²
BALCONY AREA	4.90 m ²	53.0 ft ²
TOTAL UNIT AREA	22.2 m ²	240.0 ft ²

FLAT DESIGN COMPONENTS		
STUDIO	11 m ²	
KITCHEN	7 m ²	
BATH	2 m ²	



STUDIO TYPE 01



AREA	SQ. M.	SQ. FT.
BATH AREA	2.12 m ²	23.0 ft ²
BALCONY AREA	4.90 m ²	53.0 ft ²
TOTAL UNIT AREA	22.2 m ²	240.0 ft ²

FLAT DESIGN COMPONENTS		
STUDIO	11 m ²	
KITCHEN	7 m ²	
BATH	2 m ²	

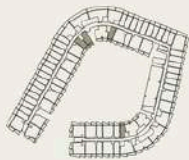


STUDIO TYPE 02



AREA	SQ. M.	SQ. FT.
BATH AREA	2.12 m ²	23.0 ft ²
BALCONY AREA	4.90 m ²	53.0 ft ²
TOTAL UNIT AREA	22.2 m ²	240.0 ft ²

FLAT DESIGN COMPONENTS		
STUDIO	11 m ²	
KITCHEN	7 m ²	
BATH	2 m ²	







Where Prestige Meets Property



At Majara Luxury Real Estate L.L.C., we redefine the art of luxury living. Based in the heart of the UAE, we specialize in curating exceptional real estate experiences tailored to the needs of discerning investors, end-users, and global clientele.



With a refined portfolio of premium properties across all seven Emirates, our expertise lies in both off-plan and ready-to-move assets, offering opportunities that blend architectural excellence with investment potential.



We are more than just property consultants & we are partners in your journey to finding the perfect home, investment, or lifestyle. Driven by integrity, market insight, and personalized service, Majara stands as a trusted name in an ever-evolving market.

Contact Us :

Phone: +971564452803

Email: info@majararealestate.com

<https://majararealestate.com/>