



GABRIEL

Gabriel Residences – Modern Living in Downtown Jebel Ali

MAJARA LUXURY REAL ESTATE LLC

Head Office Level 36-01, Po Box :124382 , Trade Center 1, Sheikh Zayed Road , Burj Al Salam Tower Dubai UAE

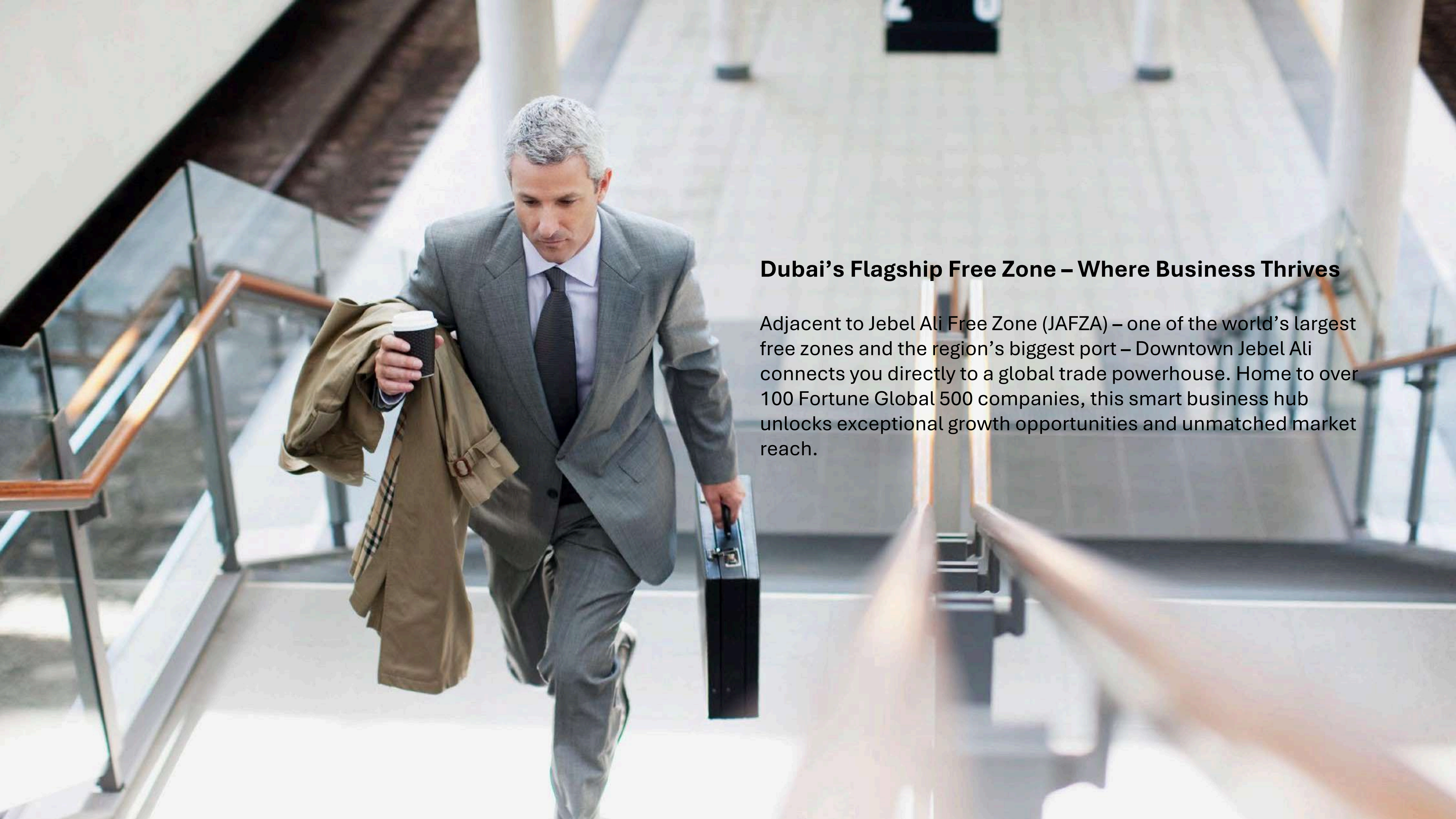


Majara Presents: Your New Address in Downtown Jebel Ali – Gabriel Residences

A photograph of a modern architectural scene at night. On the left is a tall, curved building with a glass facade, its interior lights glowing. A curved pedestrian bridge with a glass railing runs along the side of this building. Several people are walking on the bridge, their figures slightly blurred. To the right is another building with a grid of small, illuminated square windows. A street lamp is visible in the distance, casting a warm glow. The overall atmosphere is urban and contemporary.

Downtown Jebel Ali

Central. Accessible. Unmatched.

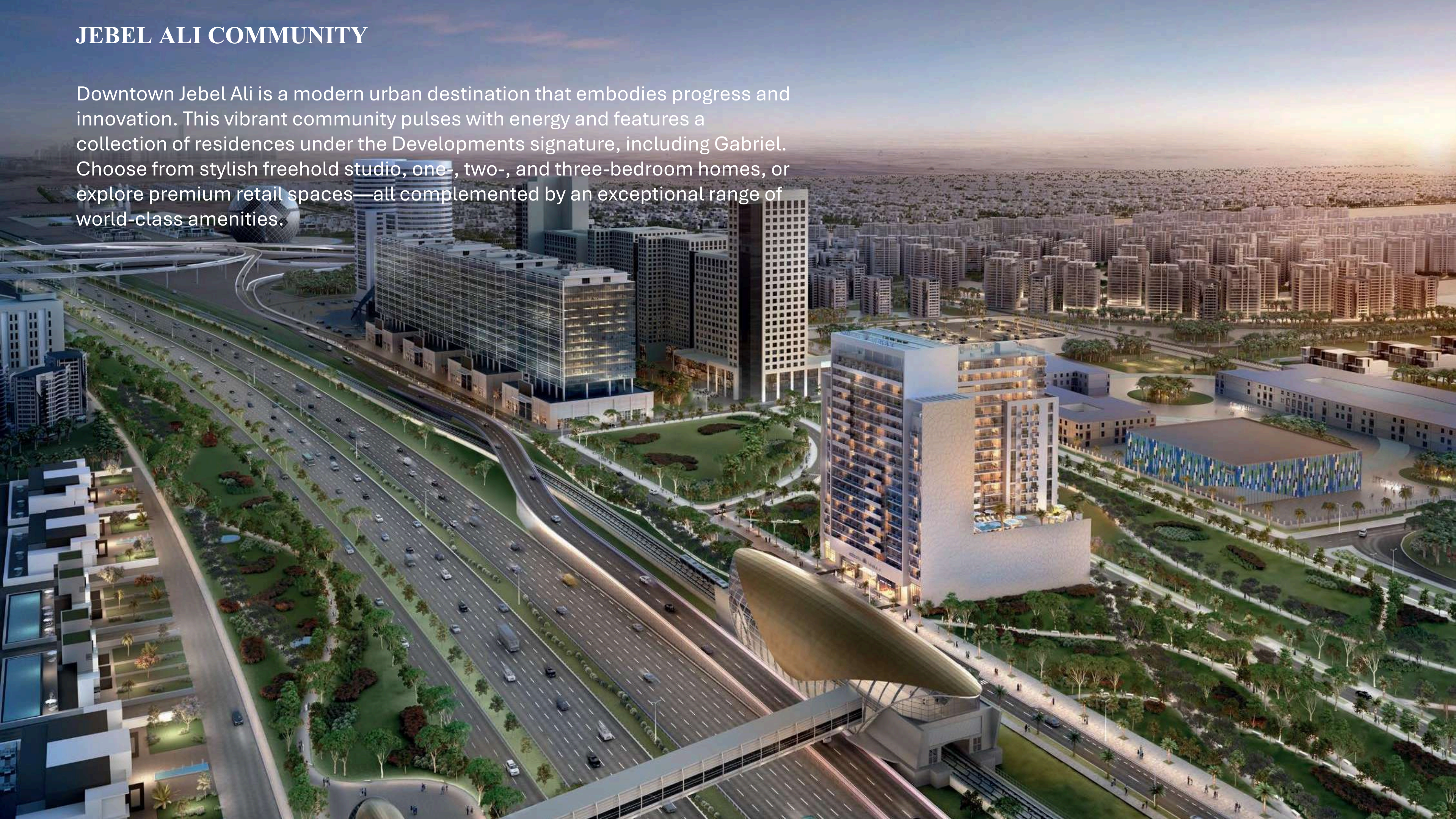


Dubai's Flagship Free Zone – Where Business Thrives

Adjacent to Jebel Ali Free Zone (JAFZA) – one of the world's largest free zones and the region's biggest port – Downtown Jebel Ali connects you directly to a global trade powerhouse. Home to over 100 Fortune Global 500 companies, this smart business hub unlocks exceptional growth opportunities and unmatched market reach.

JEBEL ALI COMMUNITY

Downtown Jebel Ali is a modern urban destination that embodies progress and innovation. This vibrant community pulses with energy and features a collection of residences under the Developments signature, including Gabriel. Choose from stylish freehold studio, one-, two-, and three-bedroom homes, or explore premium retail spaces—all complemented by an exceptional range of world-class amenities.



Begin Your Next Journey in Comfort

Located just minutes from Al Maktoum International Airport (DWC), your gateway to the world, enjoy seamless travel and a lifestyle designed for convenience and modern living.

Every Adventure Starts at Your Doorstep

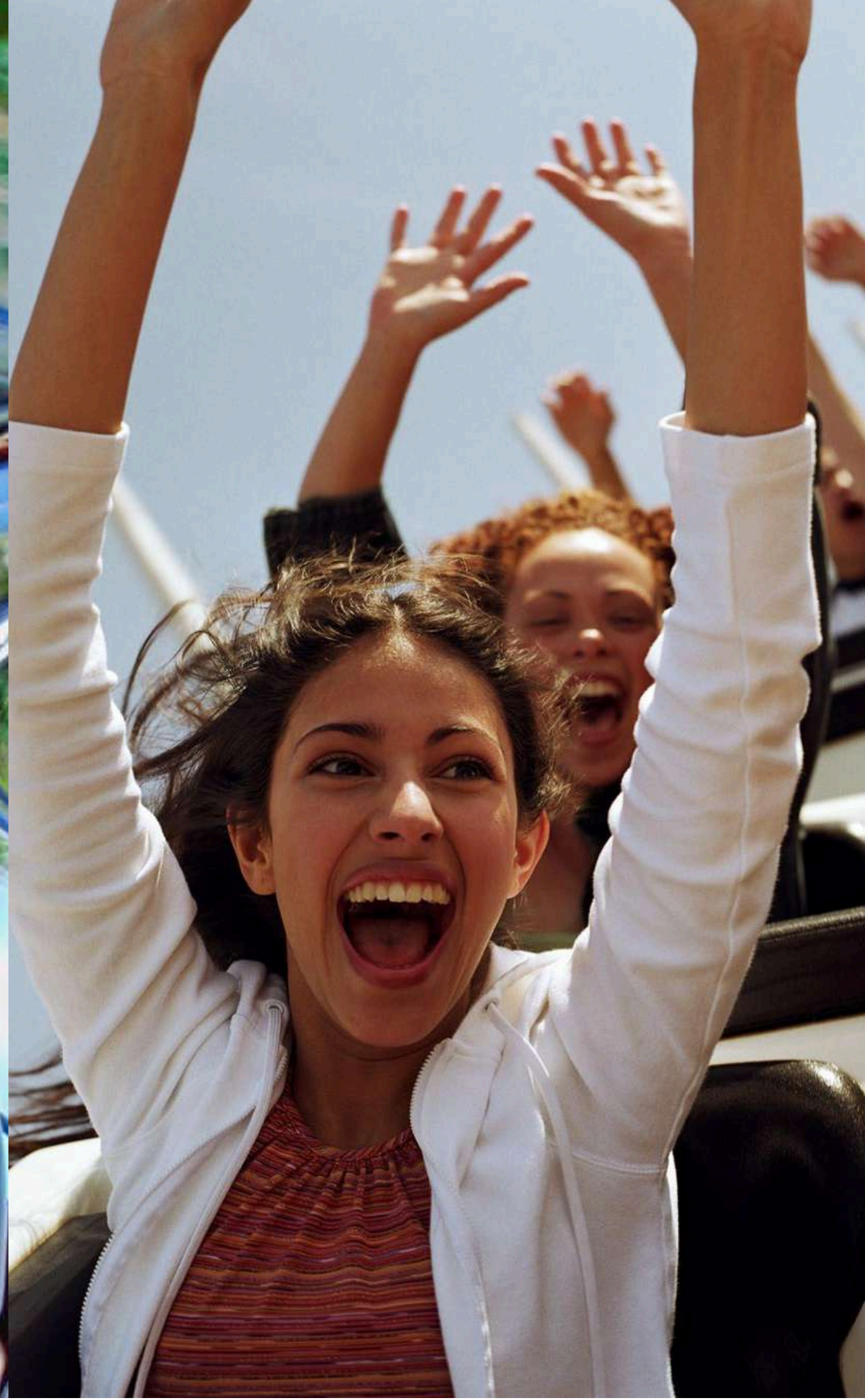
Enjoy seamless city exploration with effortless access to the metro, connecting you to Dubai's most exciting destinations.



Discover Unbeatable Deals on Top Brands

Experience a vibrant shopping destination where style, savings, and excitement come together.





1 شارع الشيخ زايد
9 دقائق
SHEIKH ZAYED ROAD
9 minutes

2 ابن بطوطة مول
10 دقائق
IBN BATTUTA MALL
10 minutes

3 محطة المترو
10 دقائق
THE METRO STATION
10 minutes

4 دبي آر
14 دقيقة
JBR
14 minutes

5 دبي مارينا
15 دقيقة
DUBAI MARINA
15 minutes

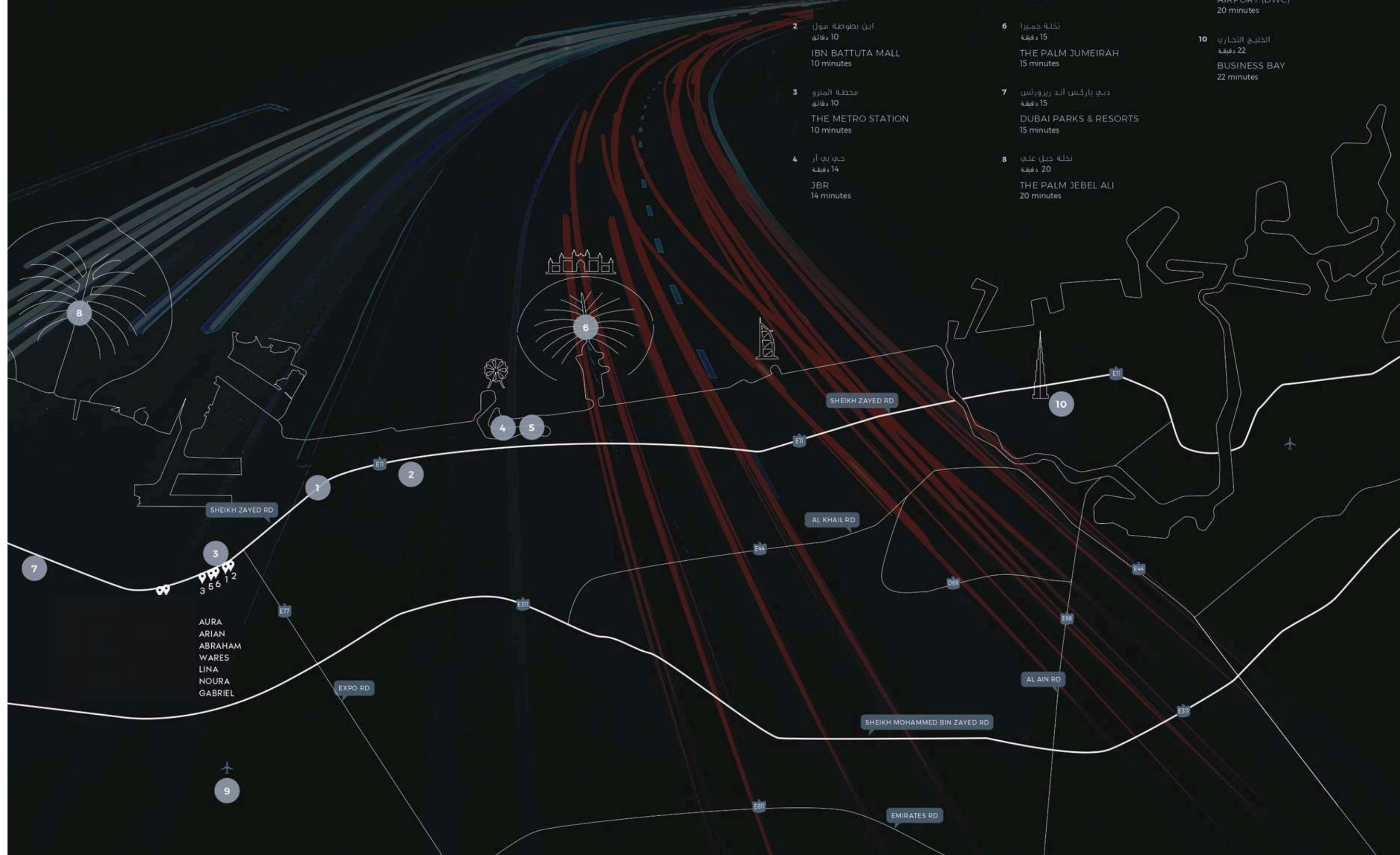
6 نخلة جميرا
15 دقيقة
THE PALM JUMEIRAH
15 minutes

7 دبي باركس أند ريزورتس
15 دقيقة
DUBAI PARKS & RESORTS
15 minutes

8 نخلة جبل علي
20 دقيقة
THE PALM JEBEL ALI
20 minutes

9 مطار آل مكتوم الدولي
20 دقيقة
AL MAKTUUM INTERNATIONAL
AIRPORT (DWC)
20 minutes

10 الخليج التجاري
22 دقيقة
BUSINESS BAY
22 minutes



GABRIEL





Introducing Gabriel

Discover an exciting new address in the heart of Downtown Jebel Ali, perfectly connected to both metro and highway networks. Build your future in a thriving community that offers direct access to Dubai's key business, retail, and entertainment hubs.

With the region's largest free trade zone and the Middle East's busiest port on your doorstep, growth and success are inevitable—no wonder more than 100 Fortune Global 500 companies have chosen this location.

Unlock a life of modern elegance with a home that reflects your style and ambition. **Gabriel**—where sophistication meets strategic location for unparalleled value.



Exuding Elegance with High-End European Design

Experience sophisticated living with meticulously crafted interiors inspired by the finest European design standards.



A modern bedroom interior featuring a large bed with a light-colored leather headboard and a matching footboard. The headboard is adorned with a large, stylized palm leaf pattern. The bed is dressed in white linens and several pillows. On either side of the bed are round, light-colored bedside tables with gold-colored lamps. The wall behind the bed is decorated with several large, gold-colored, abstract panels. A large window on the right side of the room offers a panoramic view of a city skyline at sunset, with the sun low on the horizon and the city lights beginning to glow. The room has a clean, minimalist aesthetic with a mix of neutral tones and gold accents.

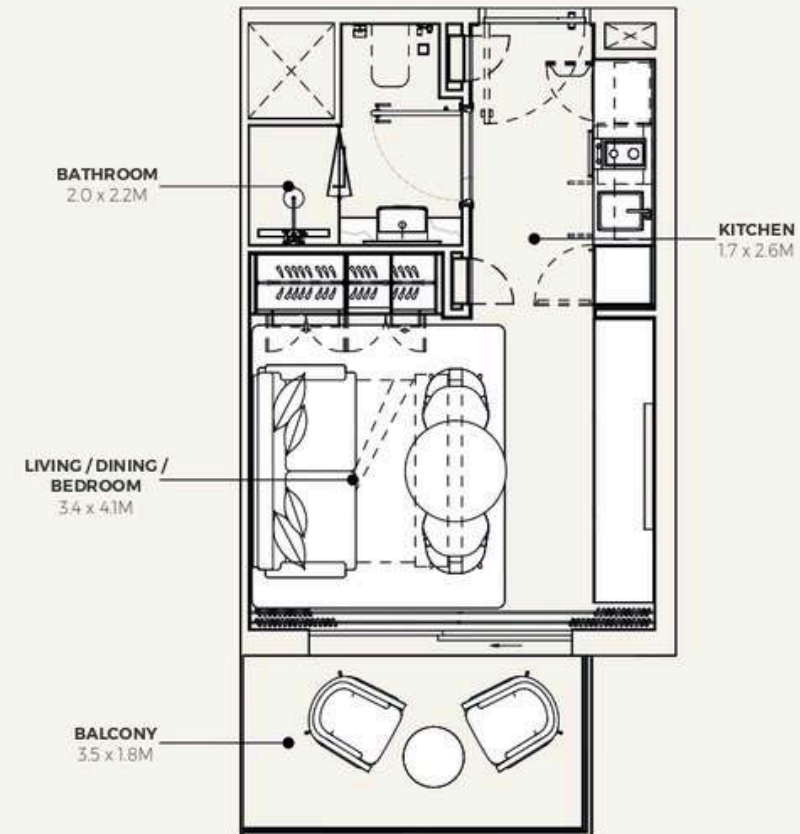
A Synergy of High-End Details

Where every element is thoughtfully crafted to create a harmonious and luxurious living experience.

GABRIEL - FLOOR PLAN

STUDIO TYPE 1

1ST FLOOR



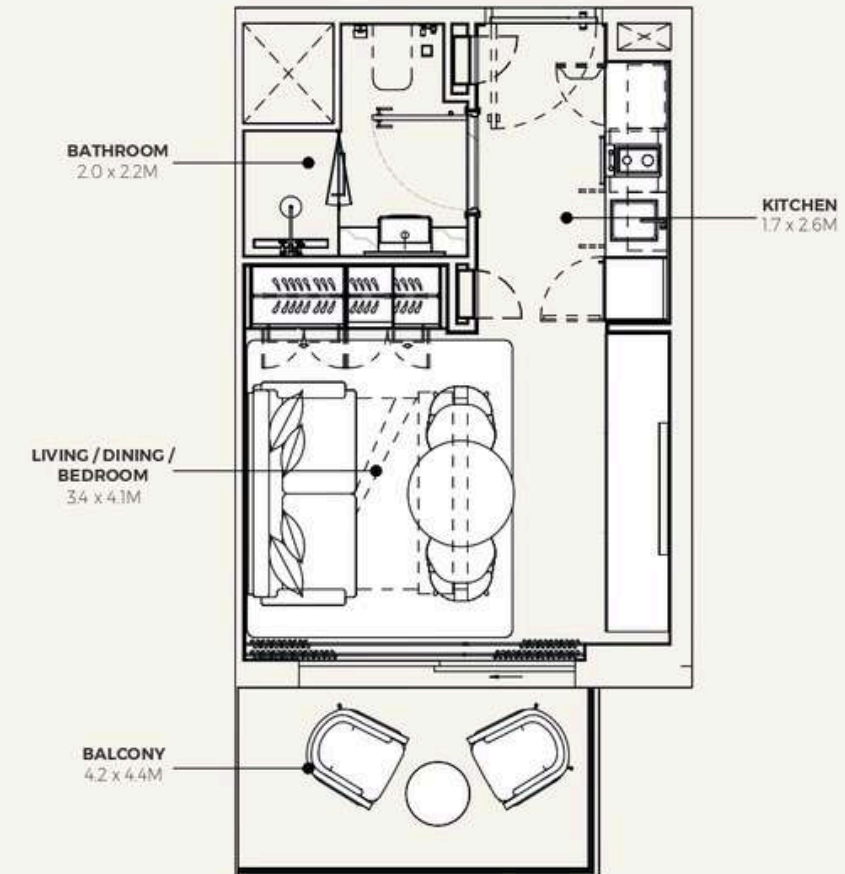
SUITE AREA : 270.93 SQ.FT.
TOTAL AREA : 339.82 SQ.FT.

TYPICAL UNITS

GABRIEL - FLOOR PLAN

STUDIO TYPE 2

PODIUM 01



SUITE AREA : 270.28 SQ.FT.
TOTAL AREA : 339.82 SQ.FT.

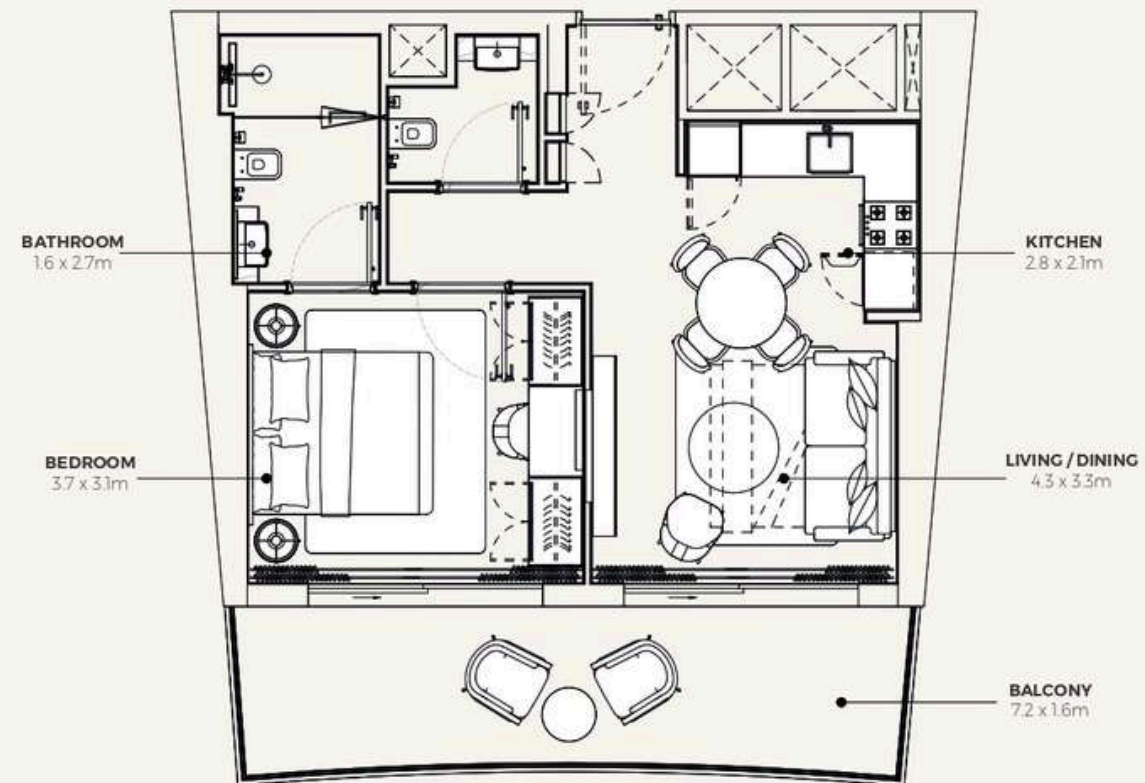
TYPICAL UNITS



GABRIEL - FLOOR PLAN

1 BEDROOM TYPE 1

PODIUM 02



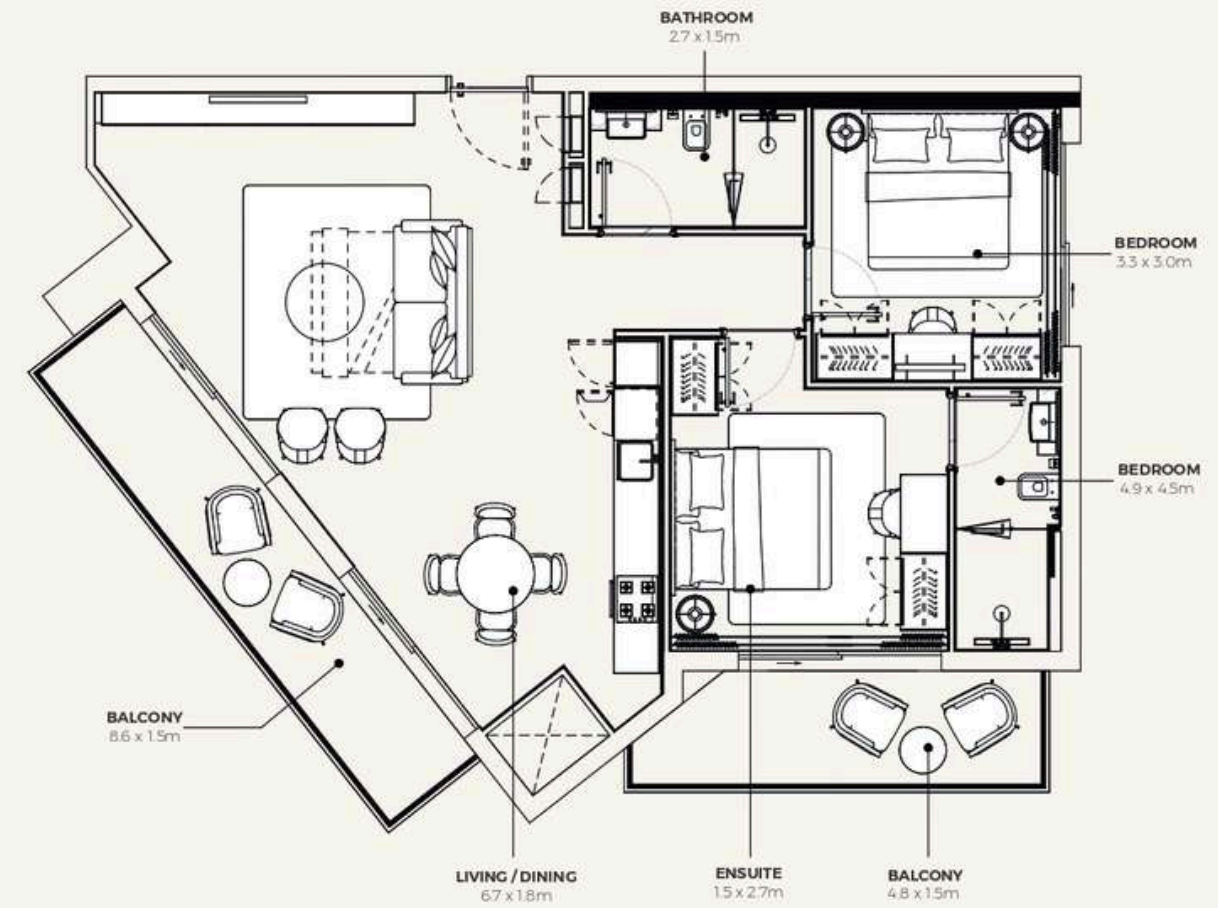
SUITE AREA : 519.04 SQ.FT.
TOTAL AREA : 679.64 SQ.FT.

TYPICAL UNITS

GABRIEL - FLOOR PLAN

2 BEDROOM TYPE 1

2ND FLOOR



SUITE AREA : 878.67 SQ.FT.
TOTAL AREA : 1,094.70 SQ.FT.

TYPICAL UNITS





Where Prestige Meets Property



At Majara Luxury Real Estate L.L.C., we redefine the art of luxury living. Based in the heart of the UAE, we specialize in curating exceptional real estate experiences tailored to the needs of discerning investors, end-users, and global clientele.



With a refined portfolio of premium properties across all seven Emirates, our expertise lies in both off-plan and ready-to-move assets, offering opportunities that blend architectural excellence with investment potential.



We are more than just property consultants & we are partners in your journey to finding the perfect home, investment, or lifestyle. Driven by integrity, market insight, and personalized service, Majara stands as a trusted name in an ever-evolving market.

Contact Us :

Phone: +971564452803

Email: info@majararealestate.com

<https://majararealestate.com/>