



AL AMEERA

www.alameeravillage.ae

DEVELOPED BY



جاي جا العقارية
PROPERTIES





AL AMEERA





PROPERTIES

AJMAN

*The convergence of ancient traditions and
contemporary living*

Ajman, the smallest yet most diverse of all emirates, strategically lies in the heart of UAE. It borders Sharjah and is approximately only 25 minutes to Dubai and 45 minutes to Ras Al Khaimah. Hence, it provides easy commute to other emirates.



الطب التقليدي
TRADITIONAL
MEDICINE

الطب التقليدي
TRADITIONAL
MEDICINE



Boasting some of the most stunning beaches around, Ajman's golden shores sit alongside untouched landscapes, misty mangroves, emerald lagoons, age-old traditions and authentic culture, along with contemporary infrastructures. An abundance of leisure activities and shopping opportunities make it a haven away from the hassles of life.

Indulge in its contemporary lifestyle, but still get lost in the tranquil world of old traditions. Discover amazing restaurants, while exploring the streets lined with impressive mansions and ancient monuments. The architectural mix of traditions with today's modern comforts, gives Ajman its own unique vibe compared to other emirates in the UAE - and it all waits to welcome you.

*A City of Ever Growing Potential and
Investment Opportunities.*

A fast developing city, and an emerging hub for prospective investors to live and work in, Ajman's Free Zone and visa extensions for investors is injecting more liquidity in the local economy, and is boosting the underlying confidence of foreign investors.

With UAE government's new laws to grant expatriate citizenships, paired with the easing of rules to provide a more conducive atmosphere, Ajman is rapidly growing as a diverse and sustainable location, attracting large numbers of investors who are keen to tap into its lucrative business opportunities.





Gulf Tower

Project Name: Gulf Tower
Phase 1: 100 Units
Phase 2: 150 Units
Phase 3: 200 Units



AL AMEERA

VILLAGE

Al Ameera Village, a unique masterpiece at 5.5 million sqft, with 5 signature skyscrapers and 44 heritage styled residential towers located in the serene suburb of Al Yasmeen, offering a complete range of amenities and luxuries to be your dream home.







LOBBY



LOBBY



LIFT LOBBY



BEDROOM



GUEST ROOM



LIVING



KITCHEN



BATHROOM



POWDER ROOM

CONNECTIVITY



19 minutes
From Amina Hospital



18 minutes
From City Centre Ajman



17 minutes
From Sharjah International
Airport



15 minutes
From Ajman Beach



3 minutes
AL Hamidiya park



24 minutes
From Dubai International
Airport



16 minutes
From
AL ZORAH

EMIRATES CITY

City project by high
- real estate company...

مشروع العقارية
شركته الراشدين للعقارات

Paradise Lake Tower
B5 Emirates City
Paradise Lake Tower B5
by Sweet Homes Group

Al Helao farm Villa

AL AMERAH
العامرة

HELIO 2
الحيو 2

Ajman Teacher
Training Institute
معهد تدريب المعلمين

Al Watan University
جامعة الوطن

Shk. Rashid
Almualla Mosque

Black camel cafe
مقهى الجمال الأسود

AL AMEERA
VILLAGE

Sheikh Maktoum Bin Rashid St

AL Hamidiya Park
حديقة الحميدية

Al Mahara, cafeteria
كافيتريا المحارة

Mandara Equestrian shop

Helio Park

Black and white coffee

Pet Care - Professional
Grooming

AL YASMEEN
الياسمين

Taw, Maghis

FLOOR PLANS

GROUND FLOOR

1 Bedroom

Retail Area

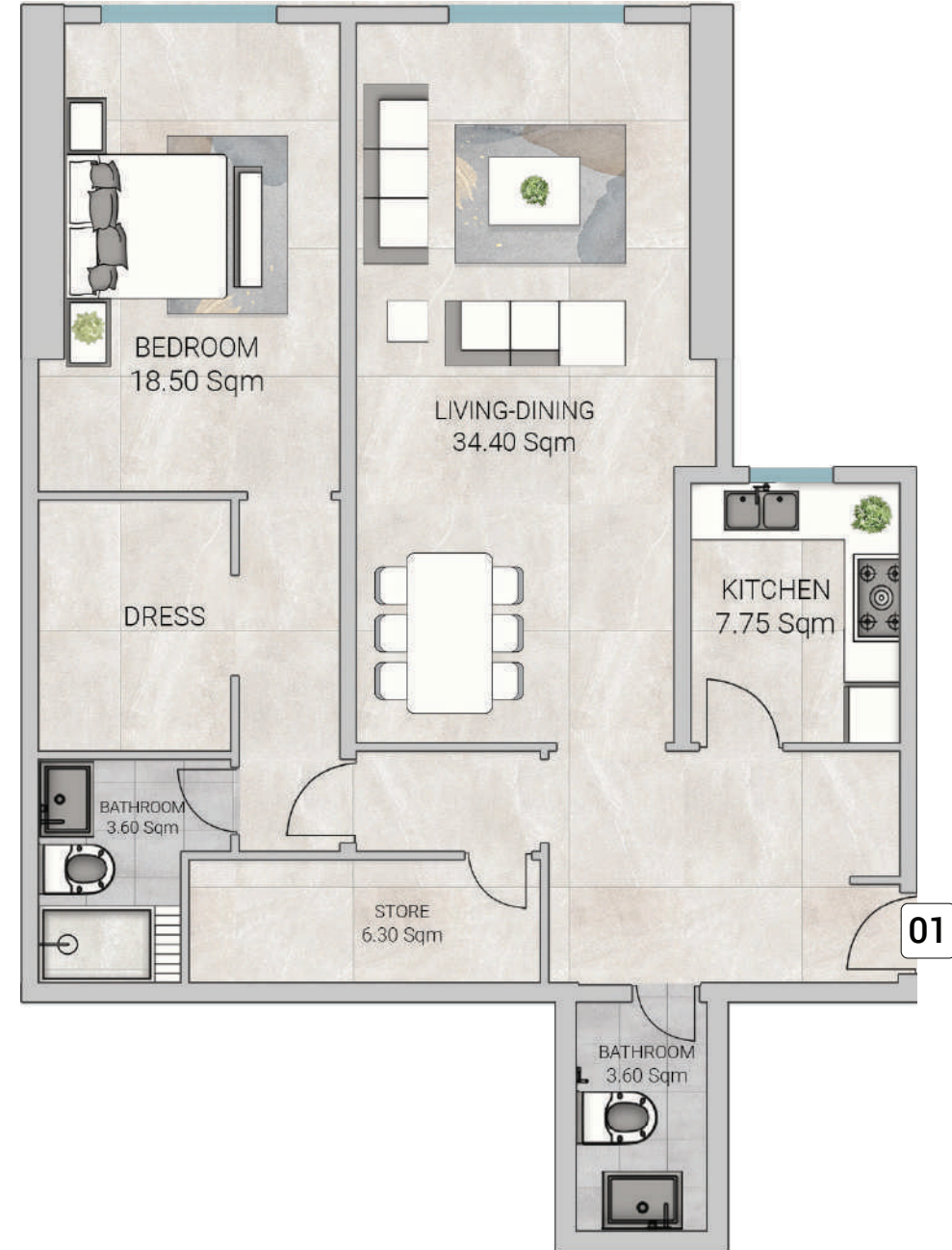


GROUND FLOOR

1 BEDROOM

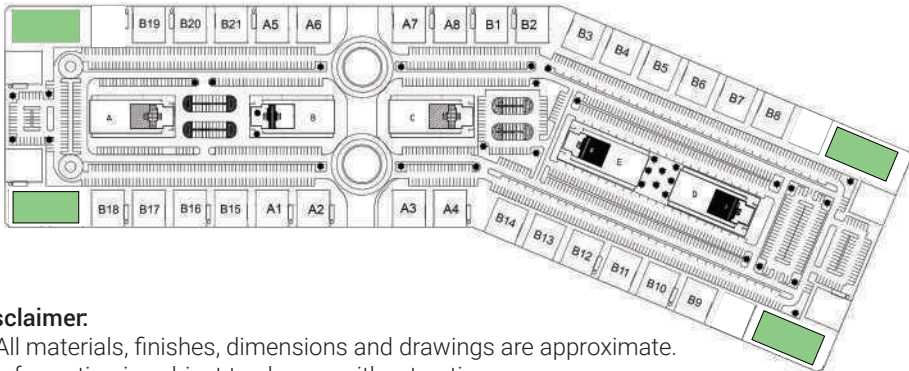
Series no: 02

Gross area 142.43 sqm 1533.09 sqft



SHEIKH MOHAMMED BIN ZAYED ROAD - E311

AL HAMIDIYA PARK



Disclaimer:

1. All materials, finishes, dimensions and drawings are approximate.
2. Information is subject to change without notice.
3. Actual suite area may vary from the stated area.
4. Drawings are not to scale.
5. The Developer reserves the right to make revisions/alterations without any liability whatsoever.

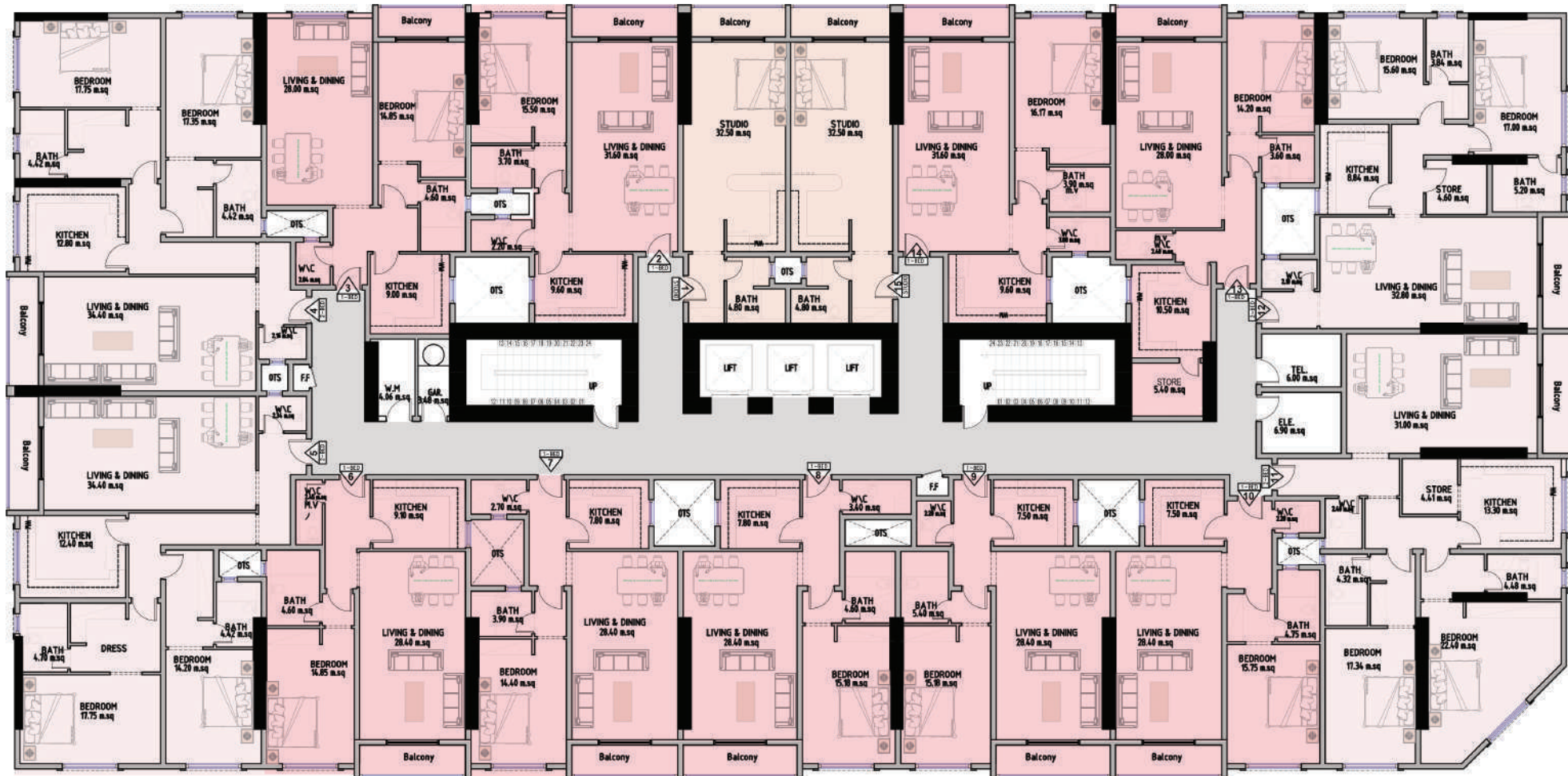
FLOOR PLANS

TYPICAL FLOOR

Studio

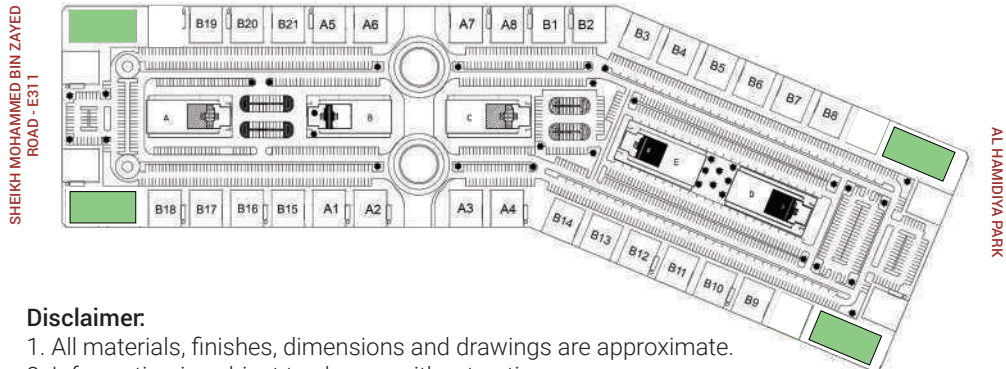
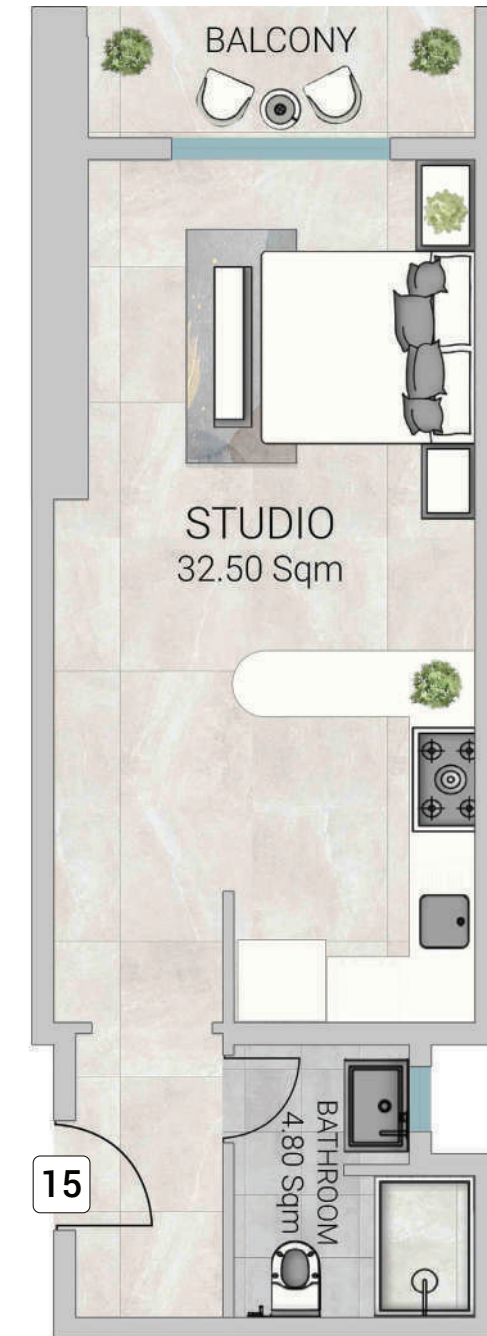
1 Bedroom

2 Bedroom



TYPICAL FLOOR STUDIO

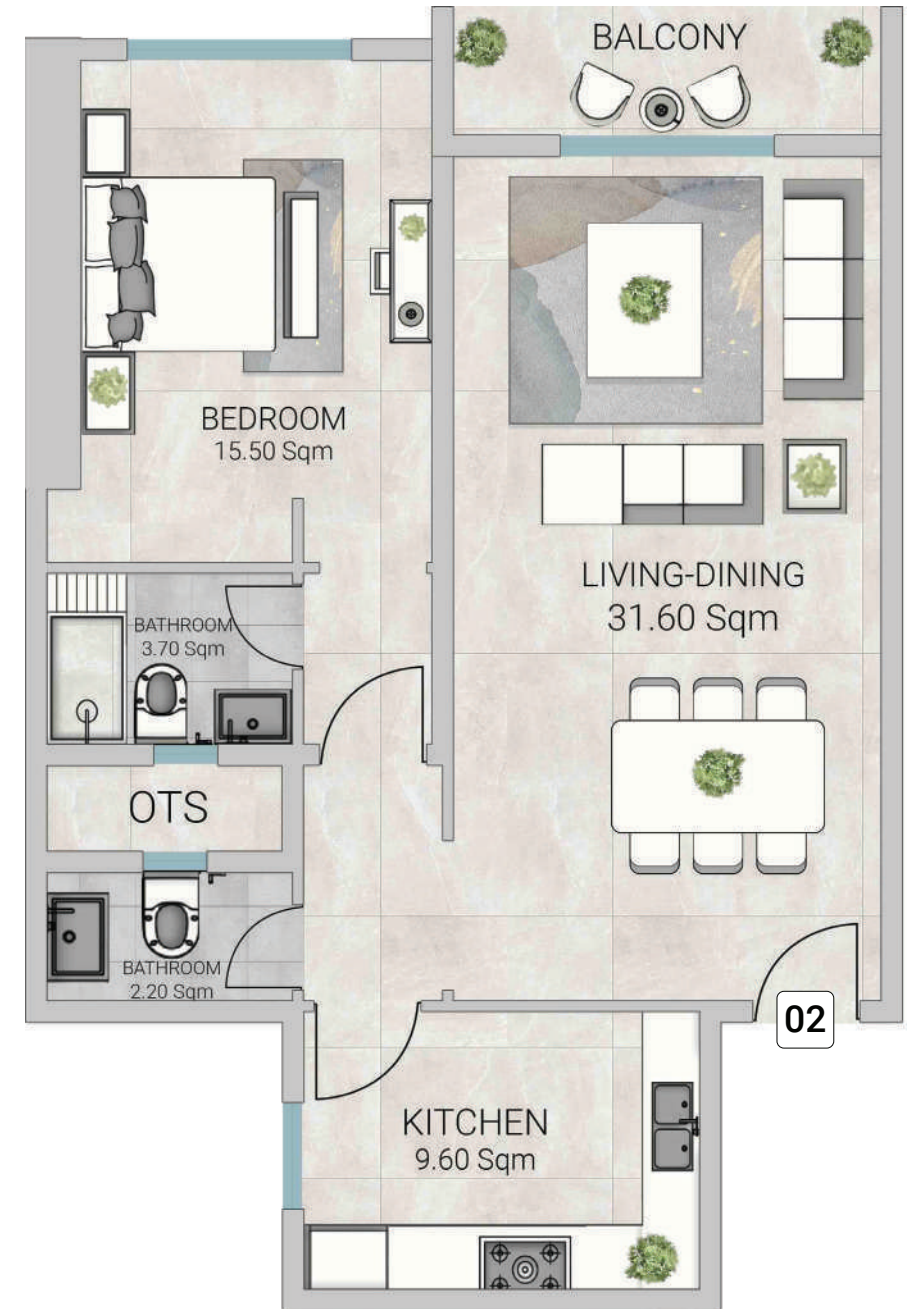
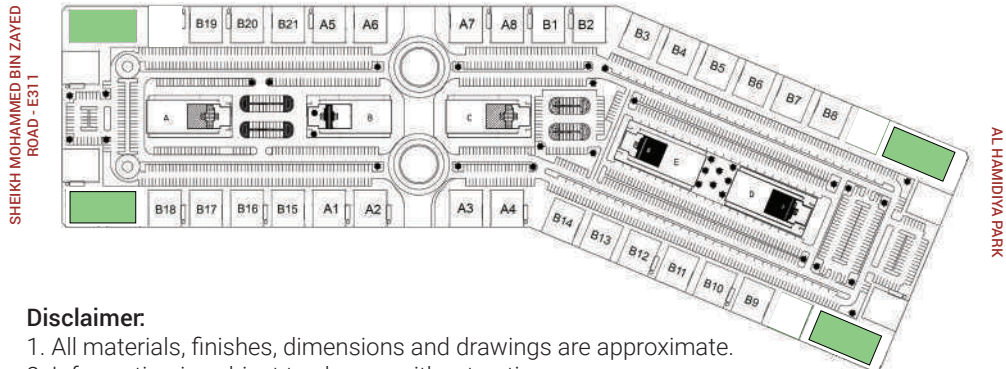
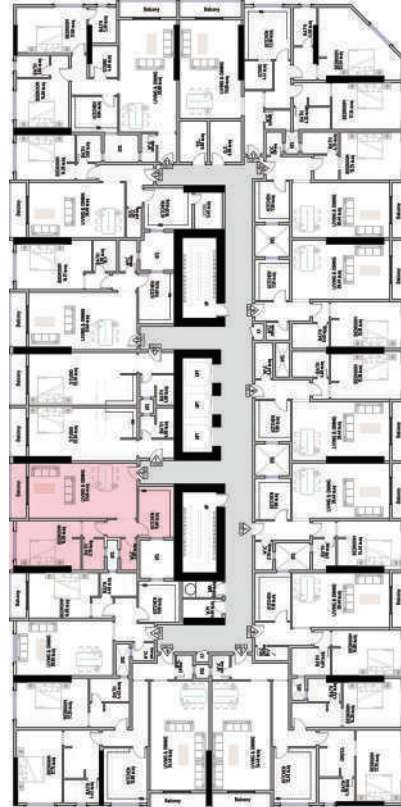
Series no: 01 15
 Gross area 59.24 sqm 637.65 sqft



- Disclaimer:**
1. All materials, finishes, dimensions and drawings are approximate.
 2. Information is subject to change without notice.
 3. Actual suite area may vary from the stated area.
 4. Drawings are not to scale.
 5. The Developer reserves the right to make revisions/alterations without any liability whatsoever.

TYPICAL FLOOR 1 BEDROOM

Series no: 02
Gross area 103.18 sqm 1110.66 sqft

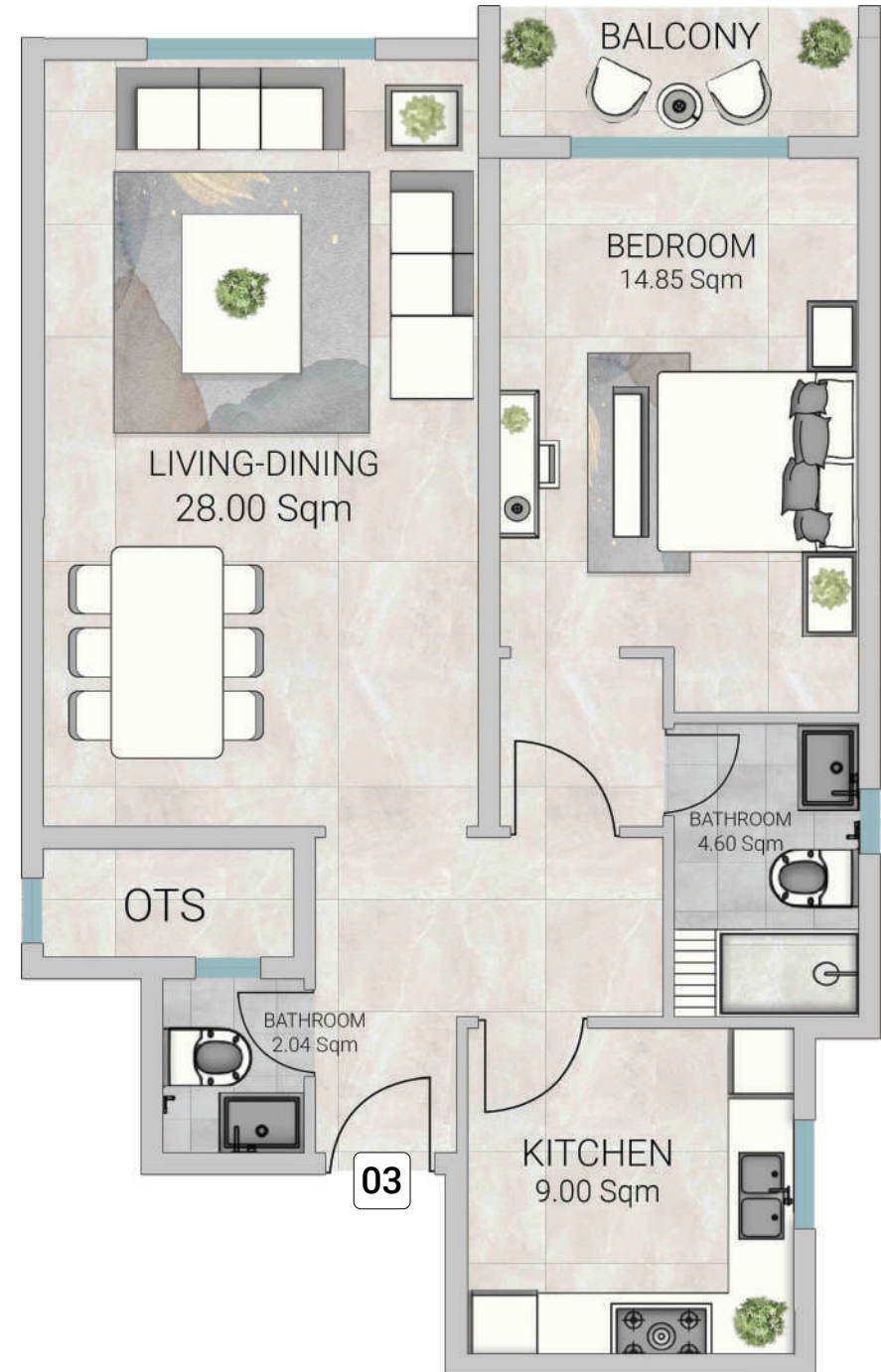
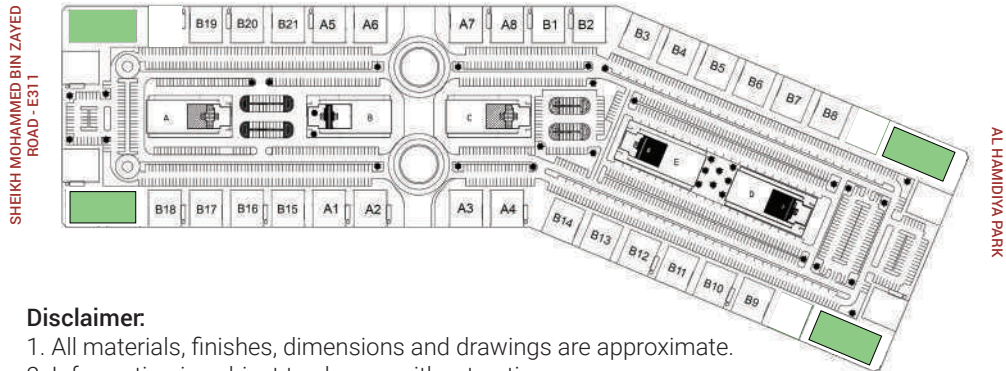
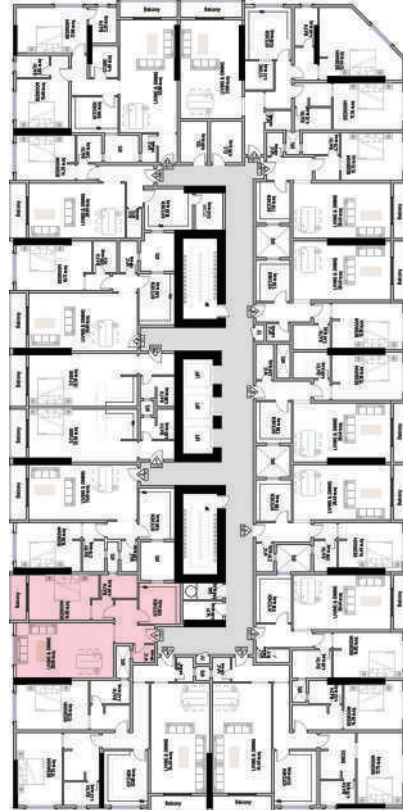


Disclaimer:

1. All materials, finishes, dimensions and drawings are approximate.
2. Information is subject to change without notice.
3. Actual suite area may vary from the stated area.
4. Drawings are not to scale.
5. The Developer reserves the right to make revisions/alterations without any liability whatsoever.

TYPICAL FLOOR 1 BEDROOM

Series no: 03
Gross area 103.42 sqm 1113.15 sqft

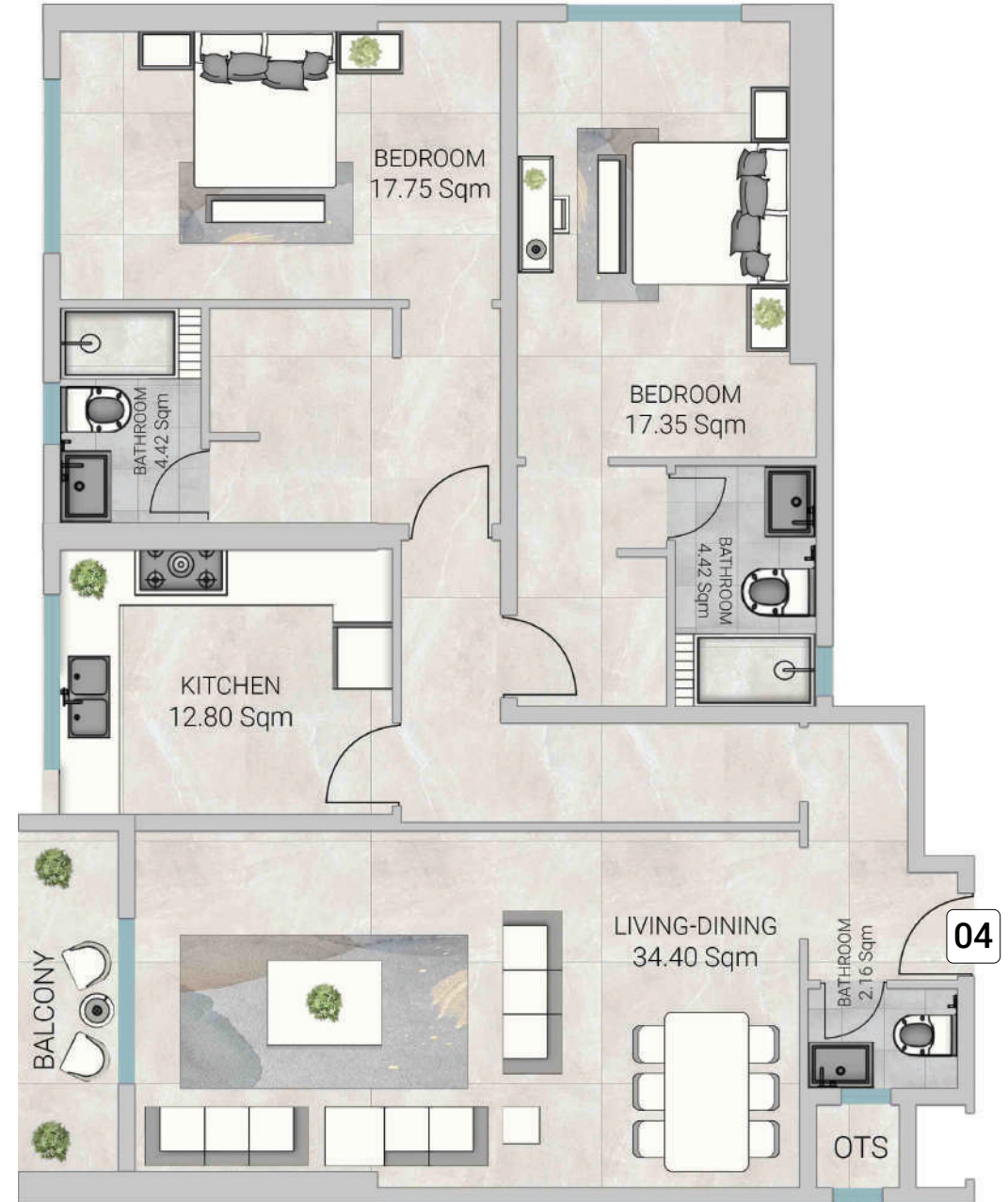
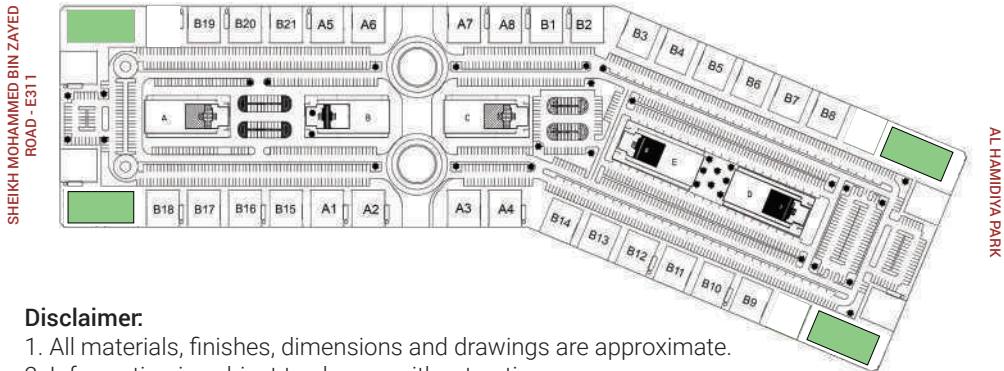
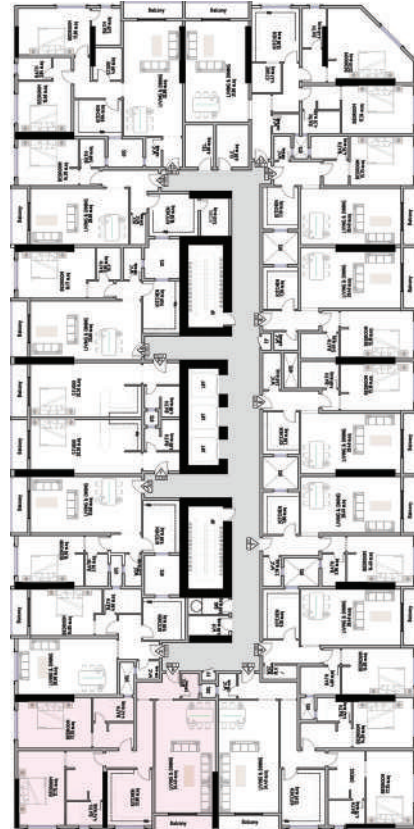


Disclaimer:

1. All materials, finishes, dimensions and drawings are approximate.
2. Information is subject to change without notice.
3. Actual suite area may vary from the stated area.
4. Drawings are not to scale.
5. The Developer reserves the right to make revisions/alterations without any liability whatsoever.

TYPICAL FLOOR 2 BEDROOM

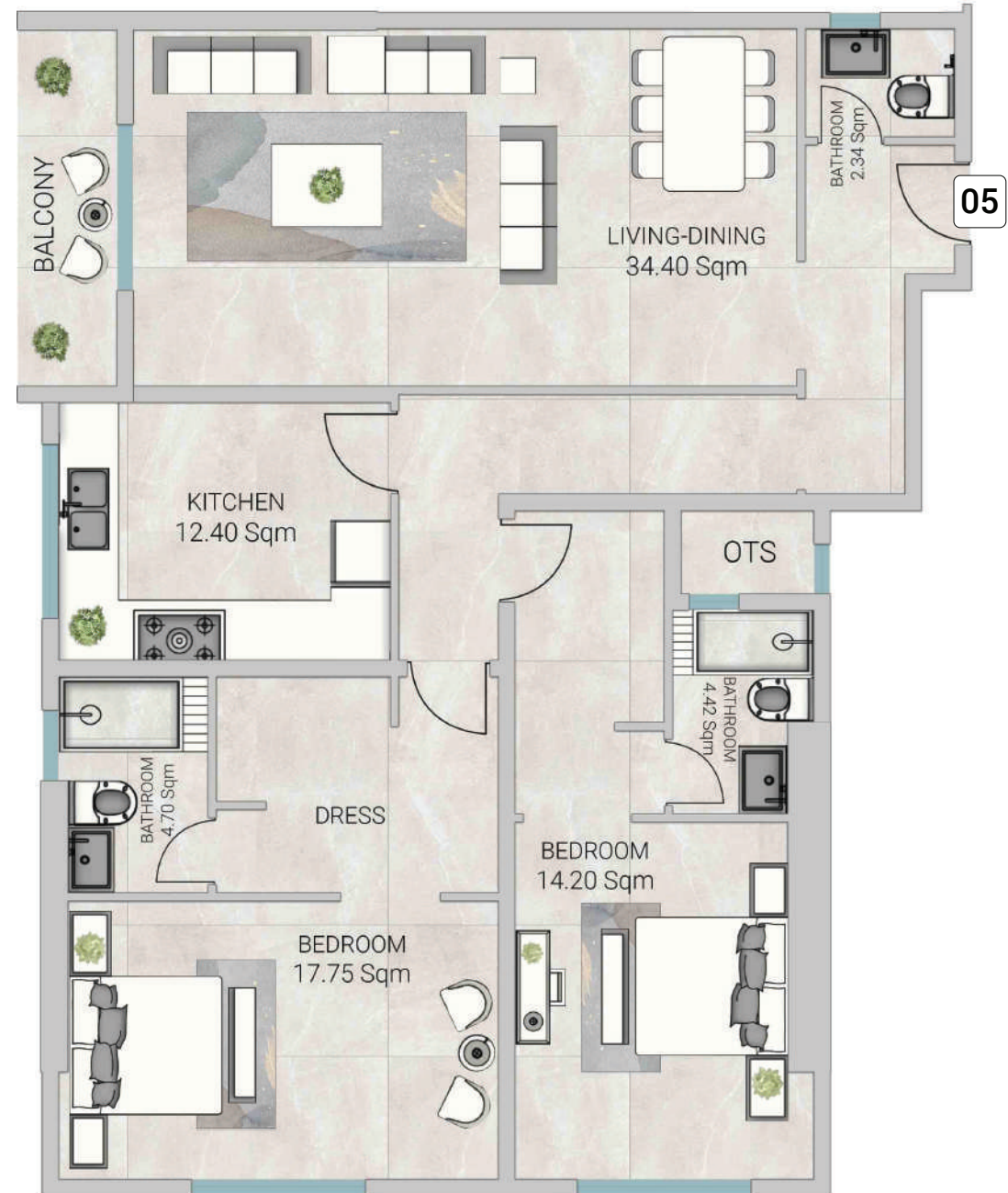
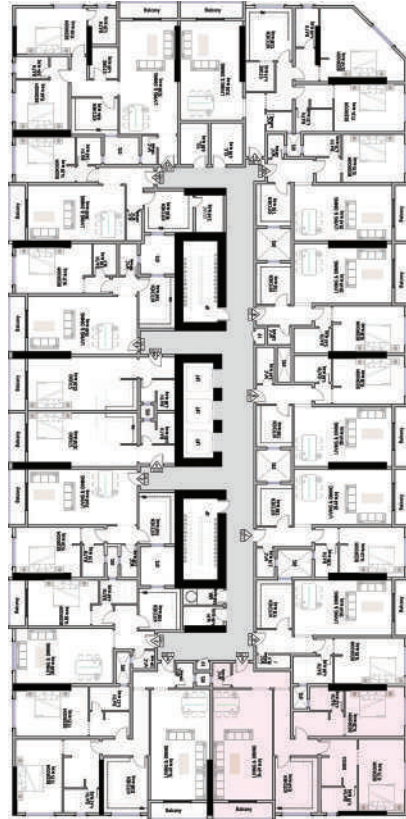
Series no: 04
 Gross area 181.01 sqm 1948.32 sqft



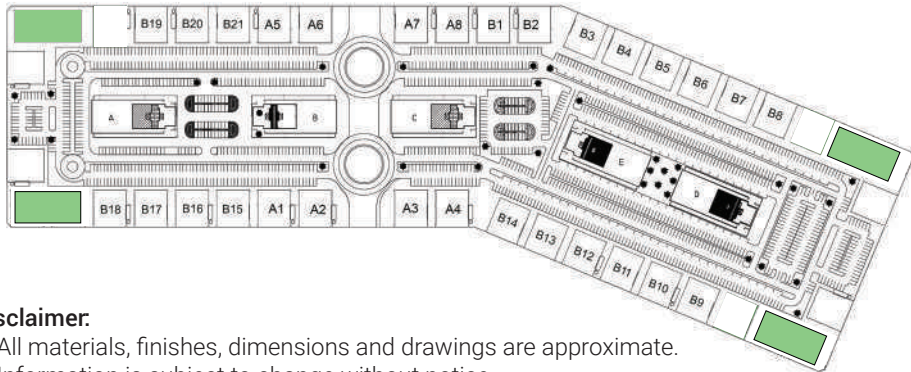
- Disclaimer:**
1. All materials, finishes, dimensions and drawings are approximate.
 2. Information is subject to change without notice.
 3. Actual suite area may vary from the stated area.
 4. Drawings are not to scale.
 5. The Developer reserves the right to make revisions/alterations without any liability whatsoever.

TYPICAL FLOOR 2 BEDROOM

Series no: 05
 Gross area 178.96 sqm 1926.35 sqft



SHEIKH MOHAMMED BIN ZAYED ROAD - E311



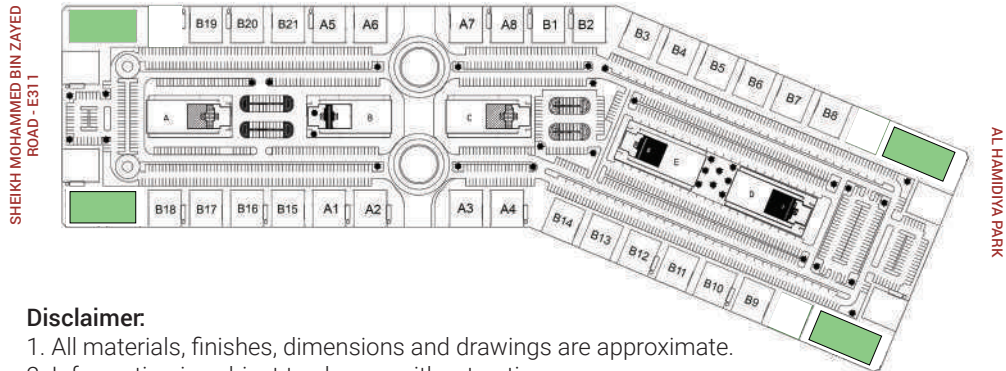
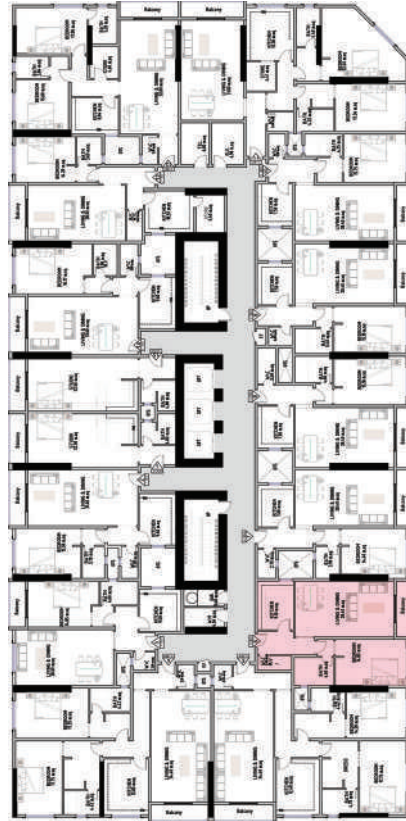
AL HAMIDIYA PARK

Disclaimer:

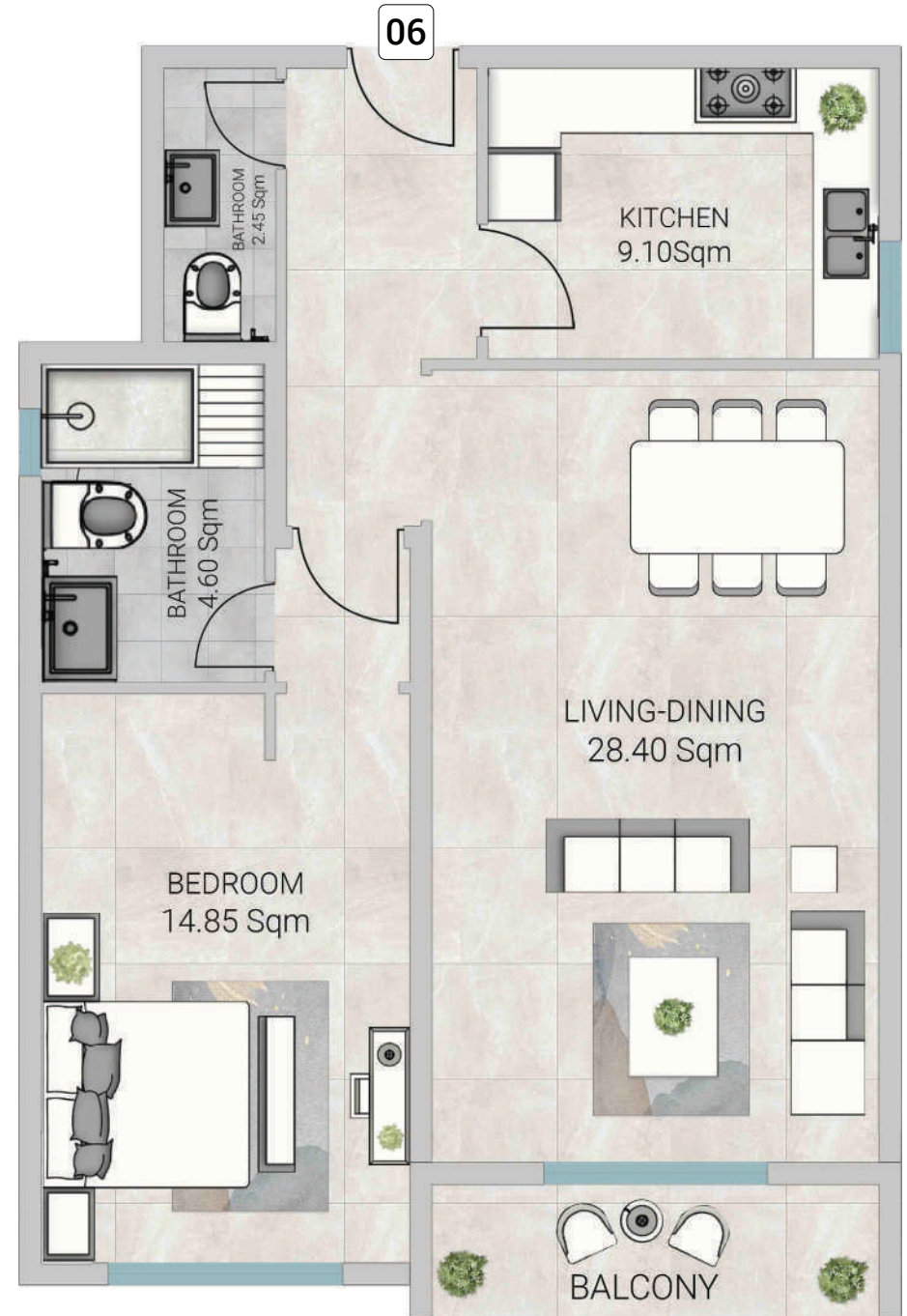
1. All materials, finishes, dimensions and drawings are approximate.
2. Information is subject to change without notice.
3. Actual suite area may vary from the stated area.
4. Drawings are not to scale.
5. The Developer reserves the right to make revisions/alterations without any liability whatsoever.

TYPICAL FLOOR 1 BEDROOM

Series no: 06
Gross area 107.05 sqm 1152.27 sqft

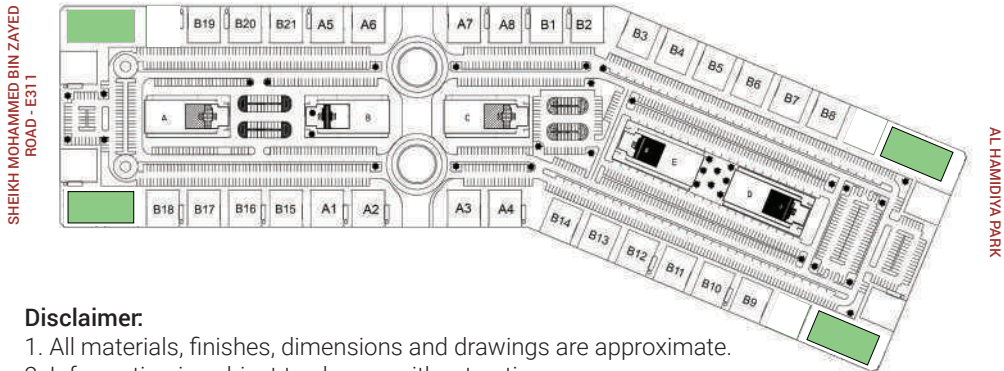
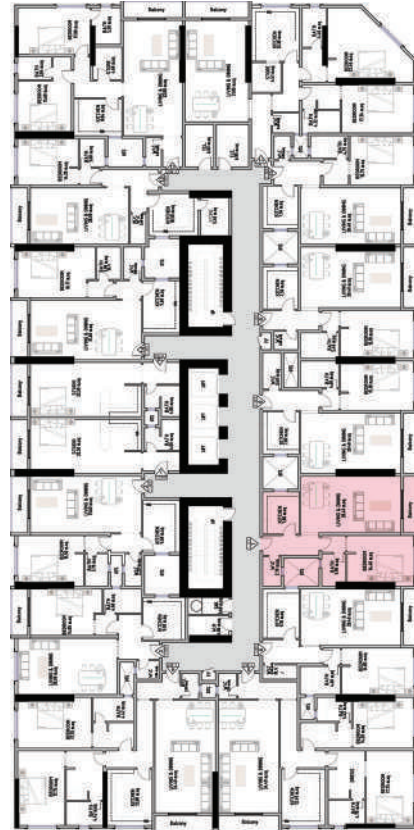


- Disclaimer:**
1. All materials, finishes, dimensions and drawings are approximate.
 2. Information is subject to change without notice.
 3. Actual suite area may vary from the stated area.
 4. Drawings are not to scale.
 5. The Developer reserves the right to make revisions/alterations without any liability whatsoever.

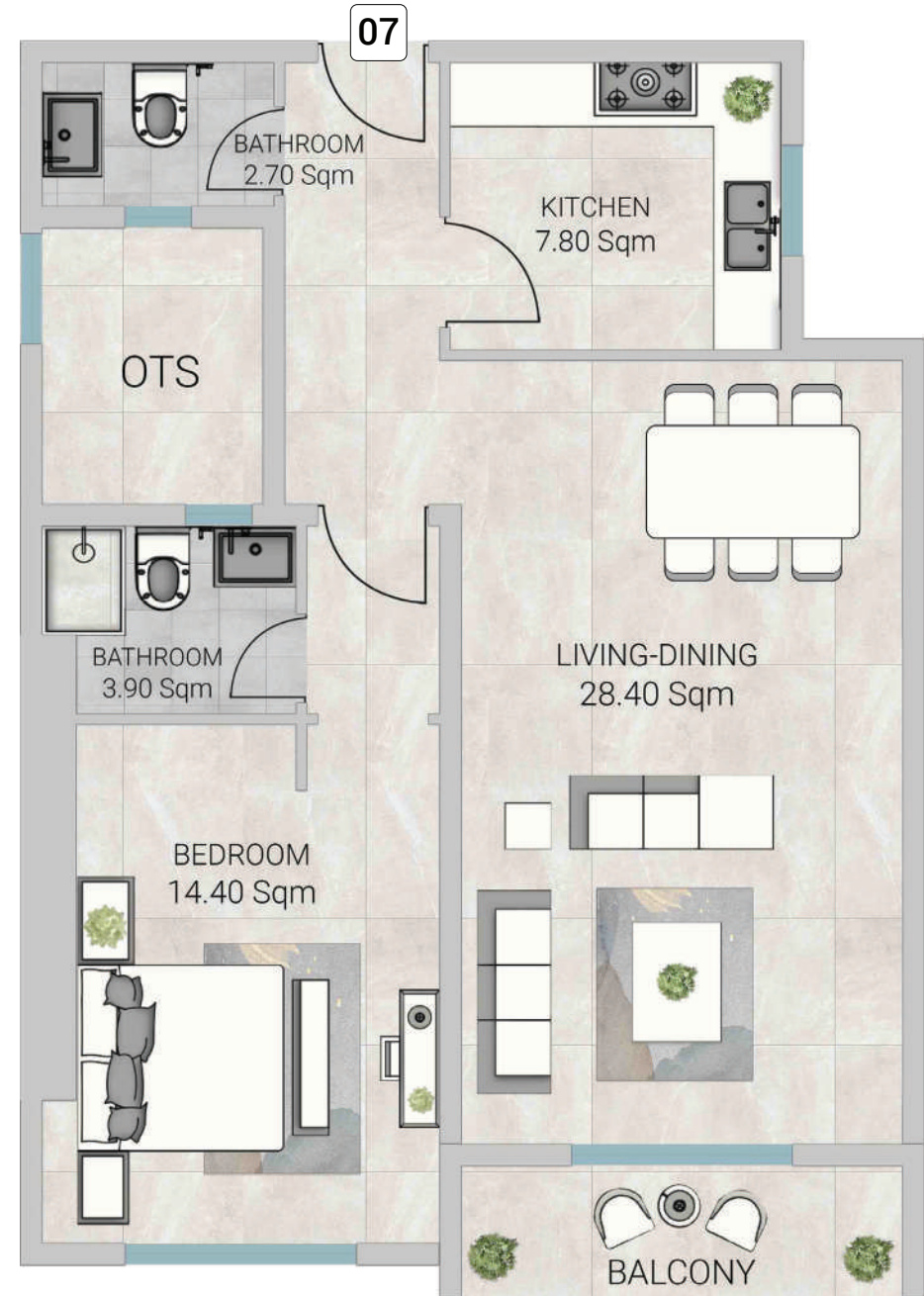


TYPICAL FLOOR 1 BEDROOM

Series no: 07
 Gross area 100.94 sqm 1086.47 sqft

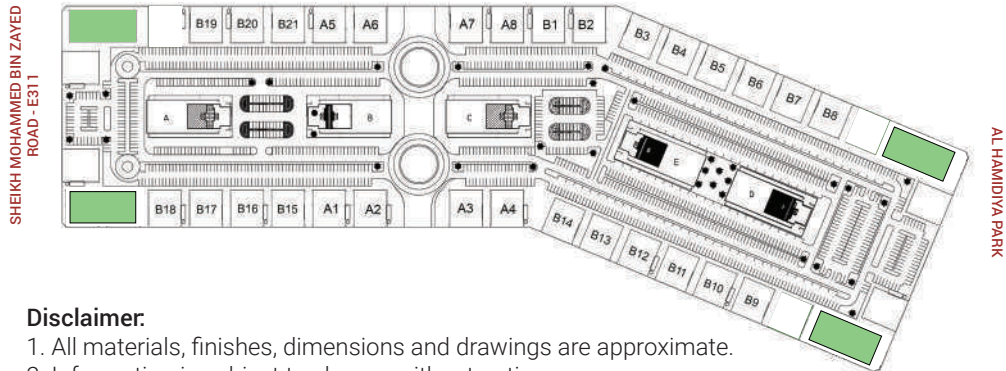
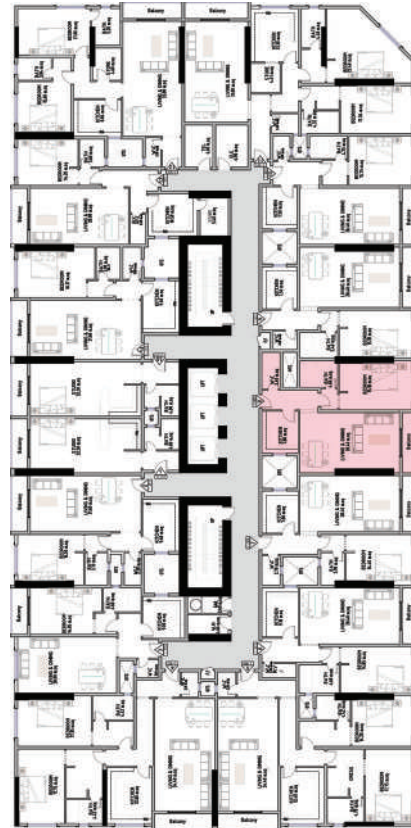


- Disclaimer:**
1. All materials, finishes, dimensions and drawings are approximate.
 2. Information is subject to change without notice.
 3. Actual suite area may vary from the stated area.
 4. Drawings are not to scale.
 5. The Developer reserves the right to make revisions/alterations without any liability whatsoever.

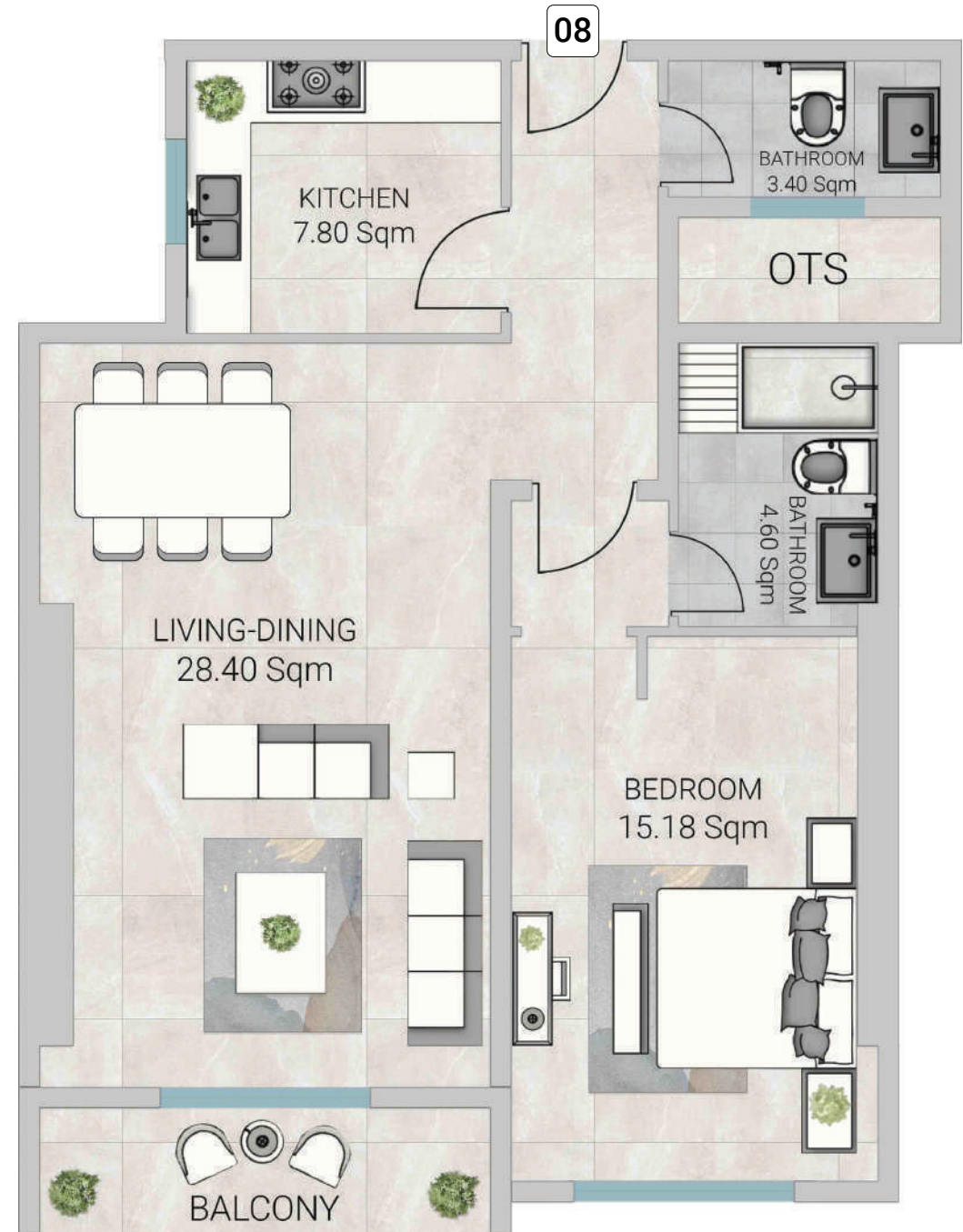


TYPICAL FLOOR 1 BEDROOM

Series no: 08
Gross area 107.22 sqm 1154.07 sqft

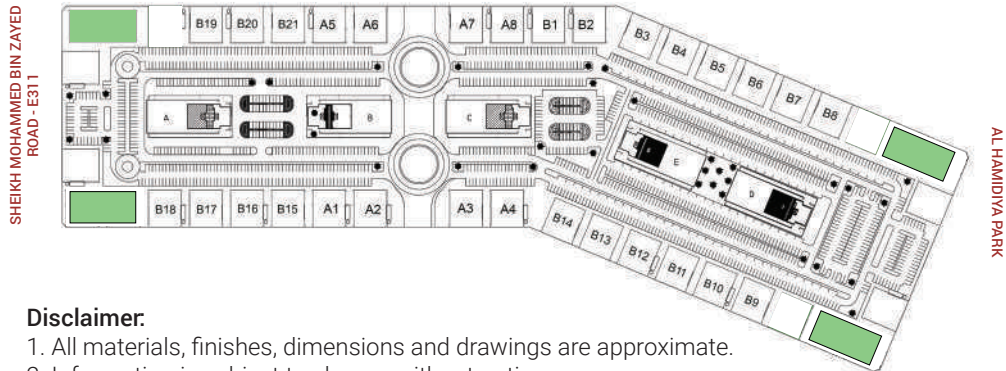


- Disclaimer:**
1. All materials, finishes, dimensions and drawings are approximate.
 2. Information is subject to change without notice.
 3. Actual suite area may vary from the stated area.
 4. Drawings are not to scale.
 5. The Developer reserves the right to make revisions/alterations without any liability whatsoever.

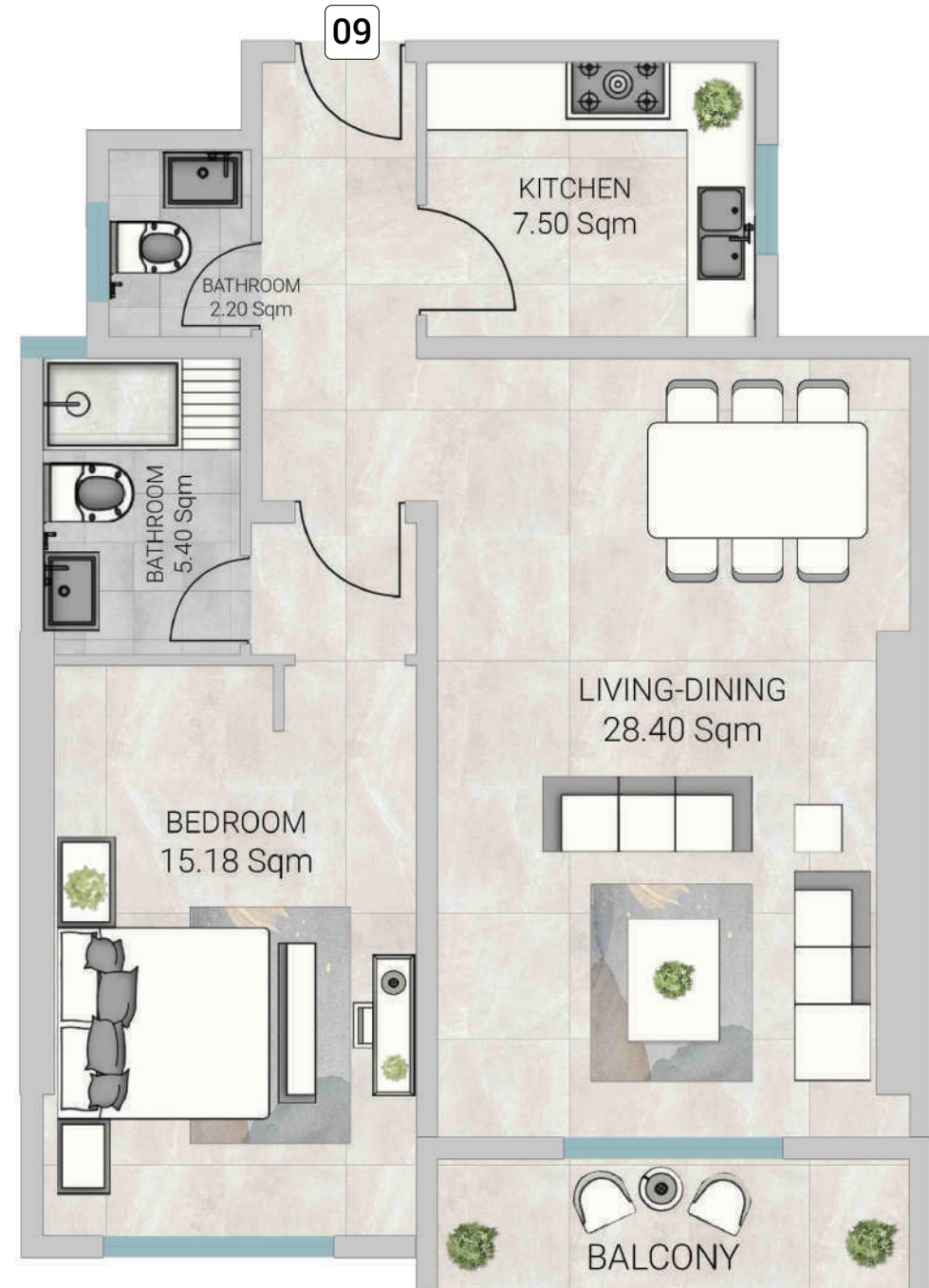


TYPICAL FLOOR 1 BEDROOM

Series no: 09
Gross area 105.65 sqm 1137.20 sqft

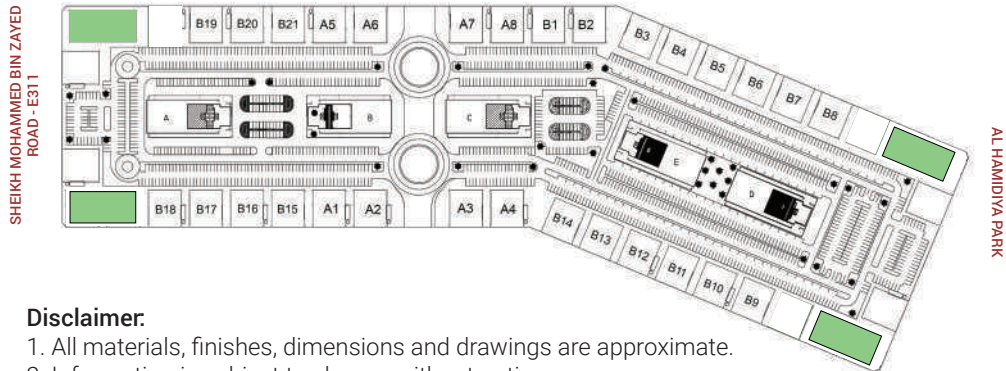
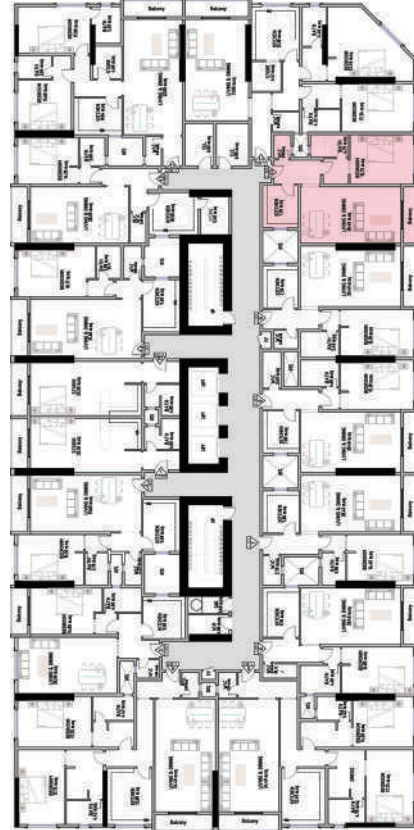


- Disclaimer:**
1. All materials, finishes, dimensions and drawings are approximate.
 2. Information is subject to change without notice.
 3. Actual suite area may vary from the stated area.
 4. Drawings are not to scale.
 5. The Developer reserves the right to make revisions/alterations without any liability whatsoever.

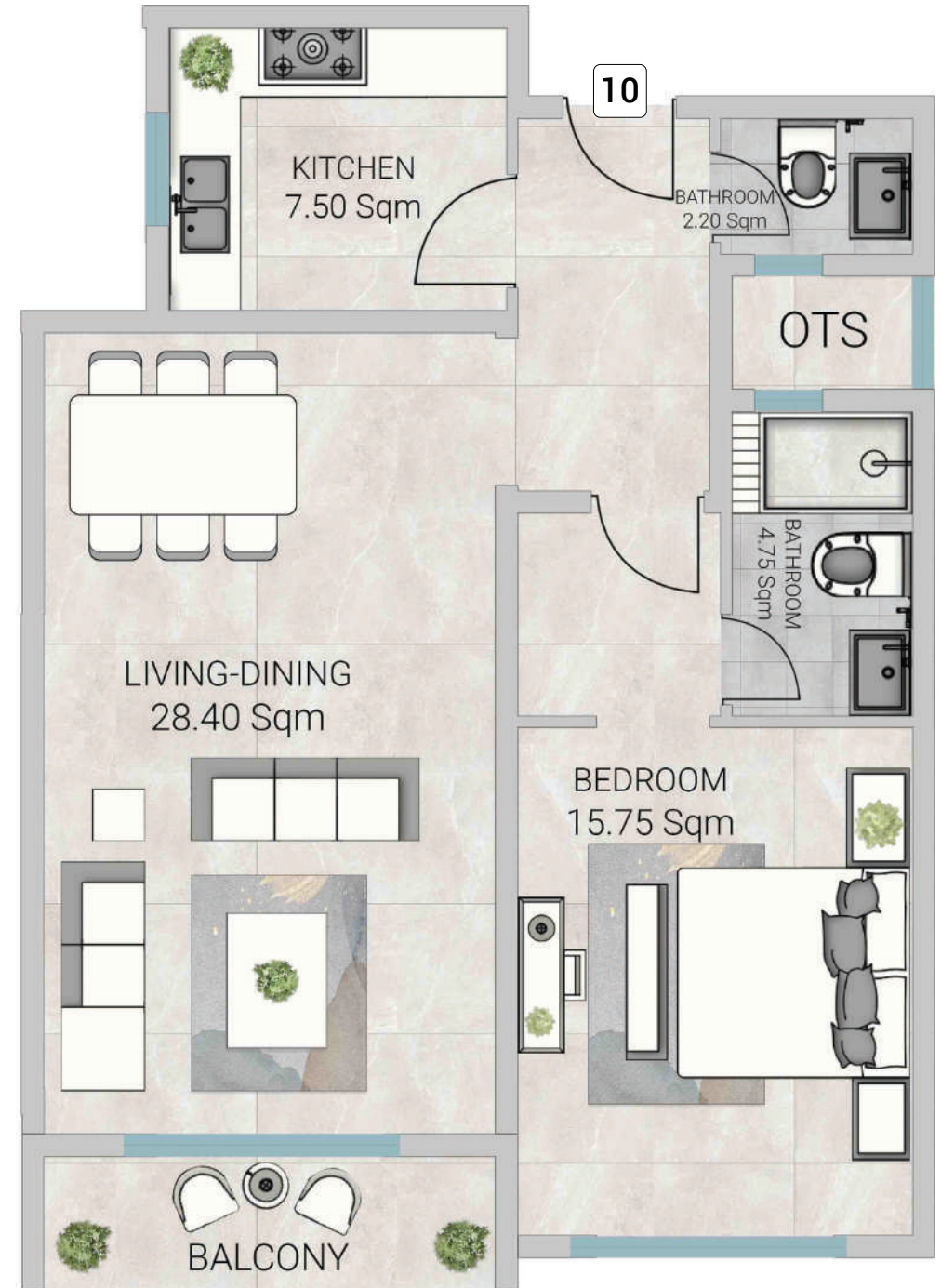


TYPICAL FLOOR 1 BEDROOM

Series no: 010
Gross area 101.93 sqm 1197.12 sqft

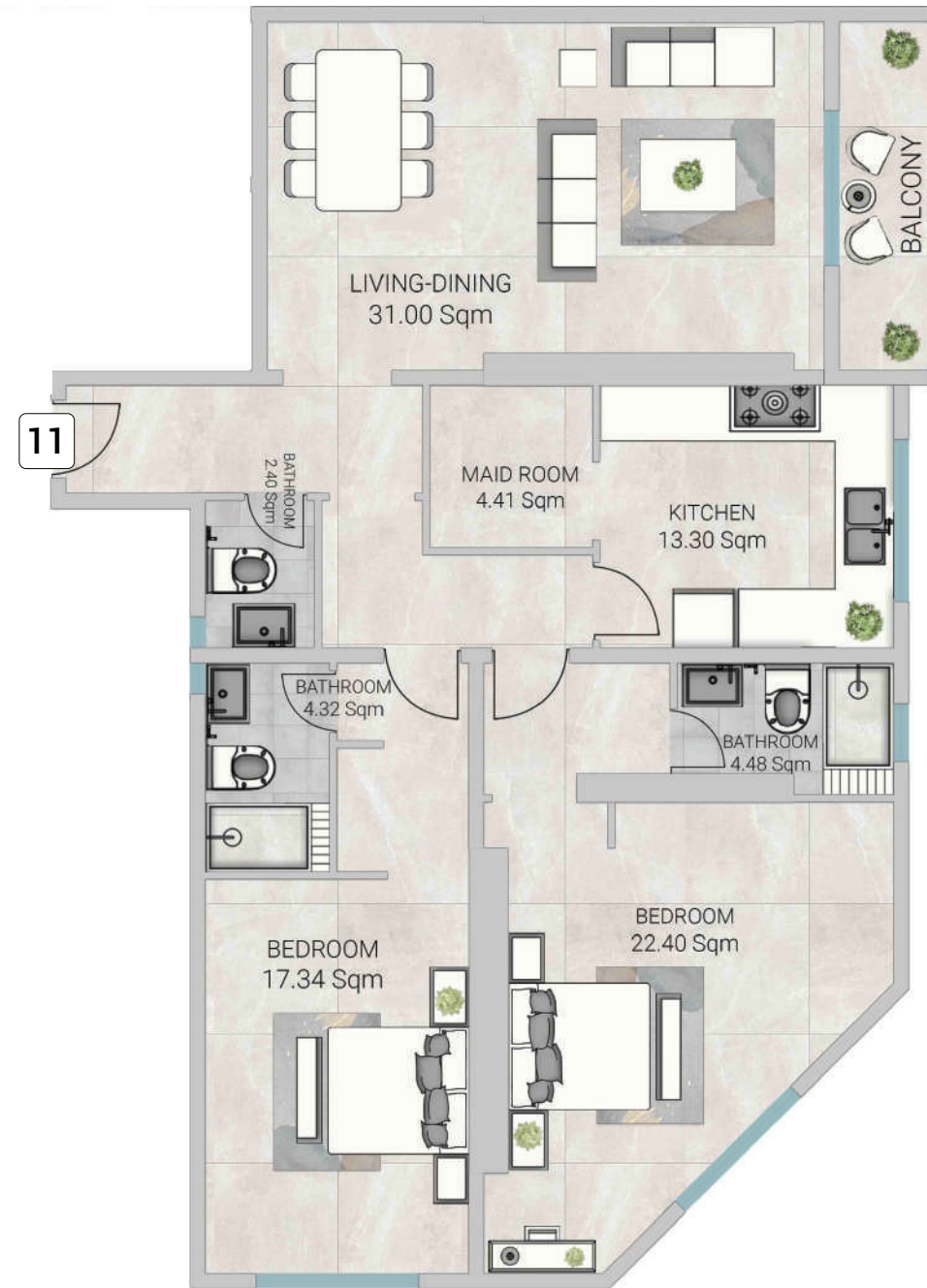
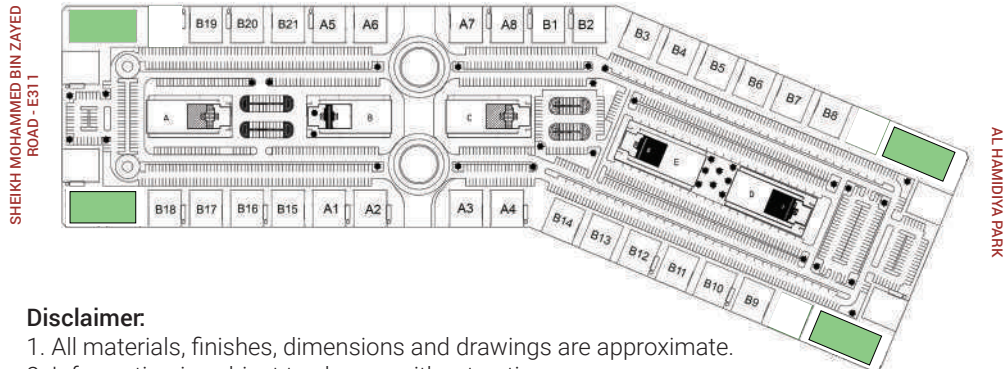
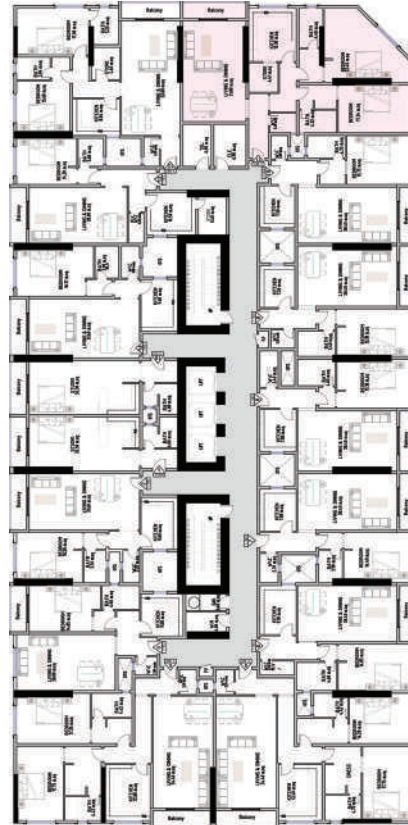


- Disclaimer:**
1. All materials, finishes, dimensions and drawings are approximate.
 2. Information is subject to change without notice.
 3. Actual suite area may vary from the stated area.
 4. Drawings are not to scale.
 5. The Developer reserves the right to make revisions/alterations without any liability whatsoever.



TYPICAL FLOOR 2 BEDROOM

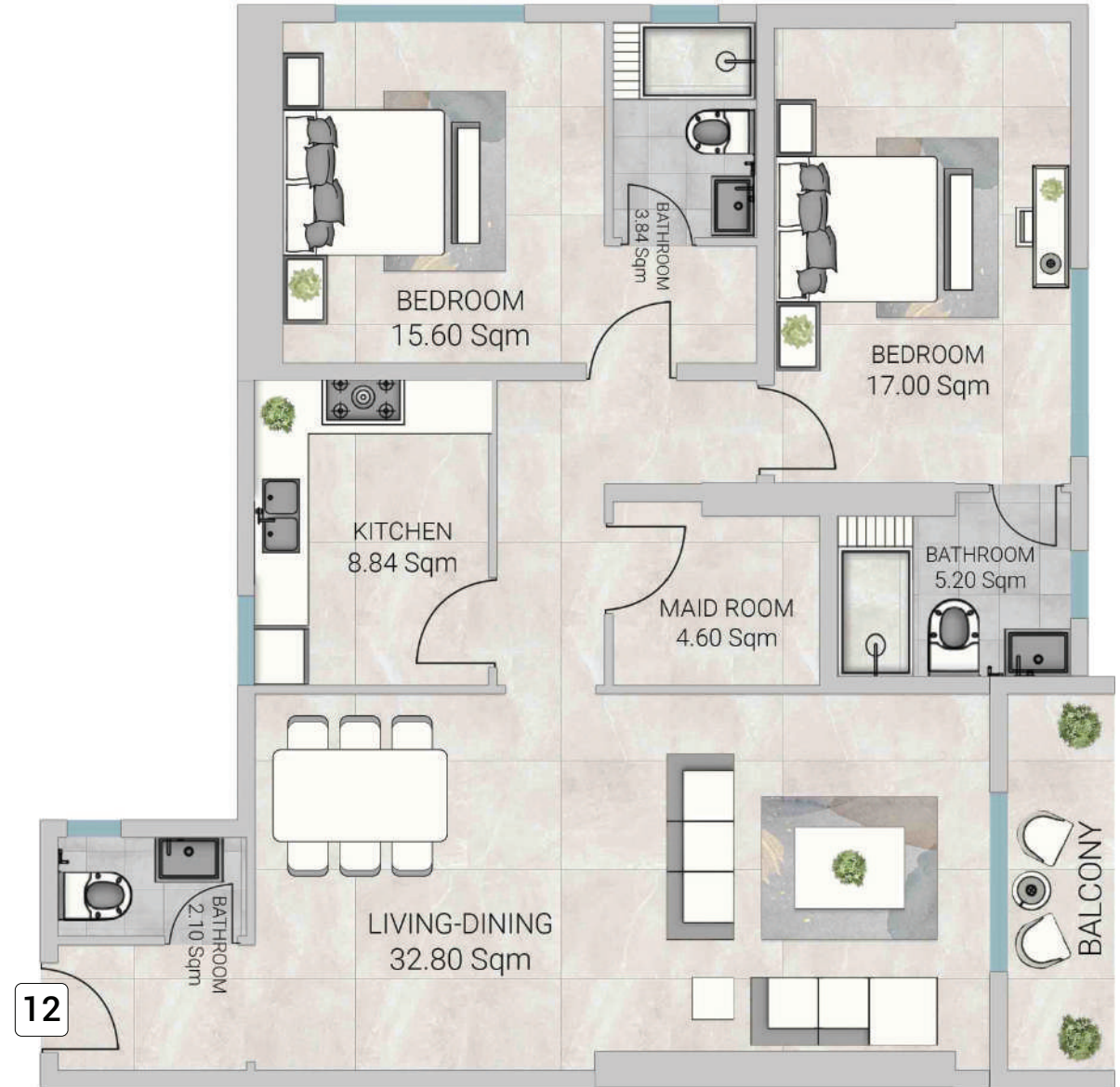
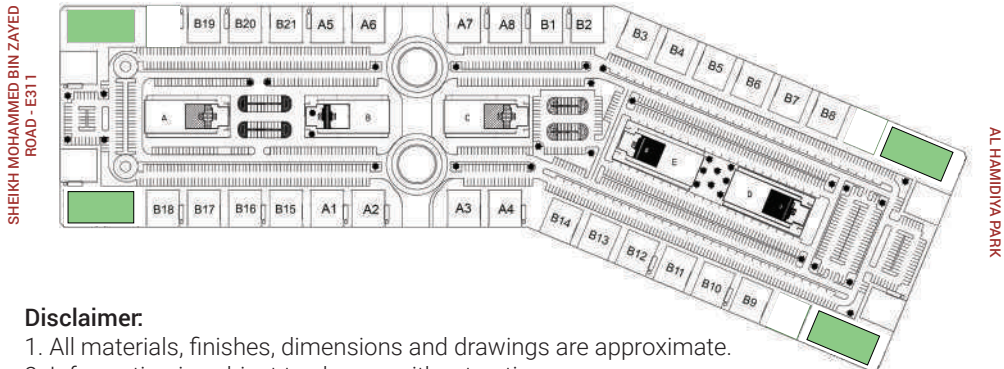
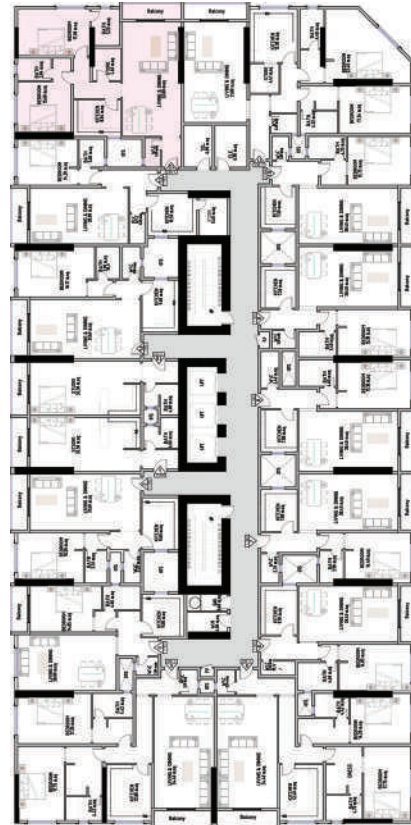
Series no: 011
 Gross area 185.29 sqm 1994.49 sqft



- Disclaimer:**
1. All materials, finishes, dimensions and drawings are approximate.
 2. Information is subject to change without notice.
 3. Actual suite area may vary from the stated area.
 4. Drawings are not to scale.
 5. The Developer reserves the right to make revisions/alterations without any liability whatsoever.

TYPICAL FLOOR 2 BEDROOM

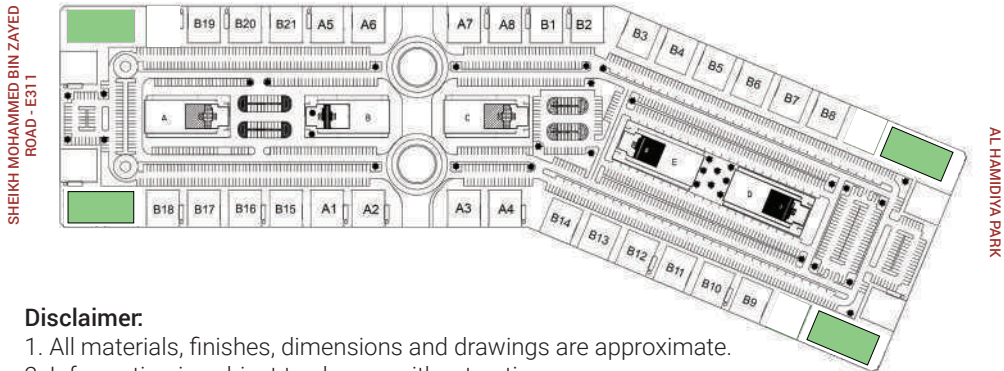
Series no: 012
 Gross area 151.98 sqm 1635.93 sqft



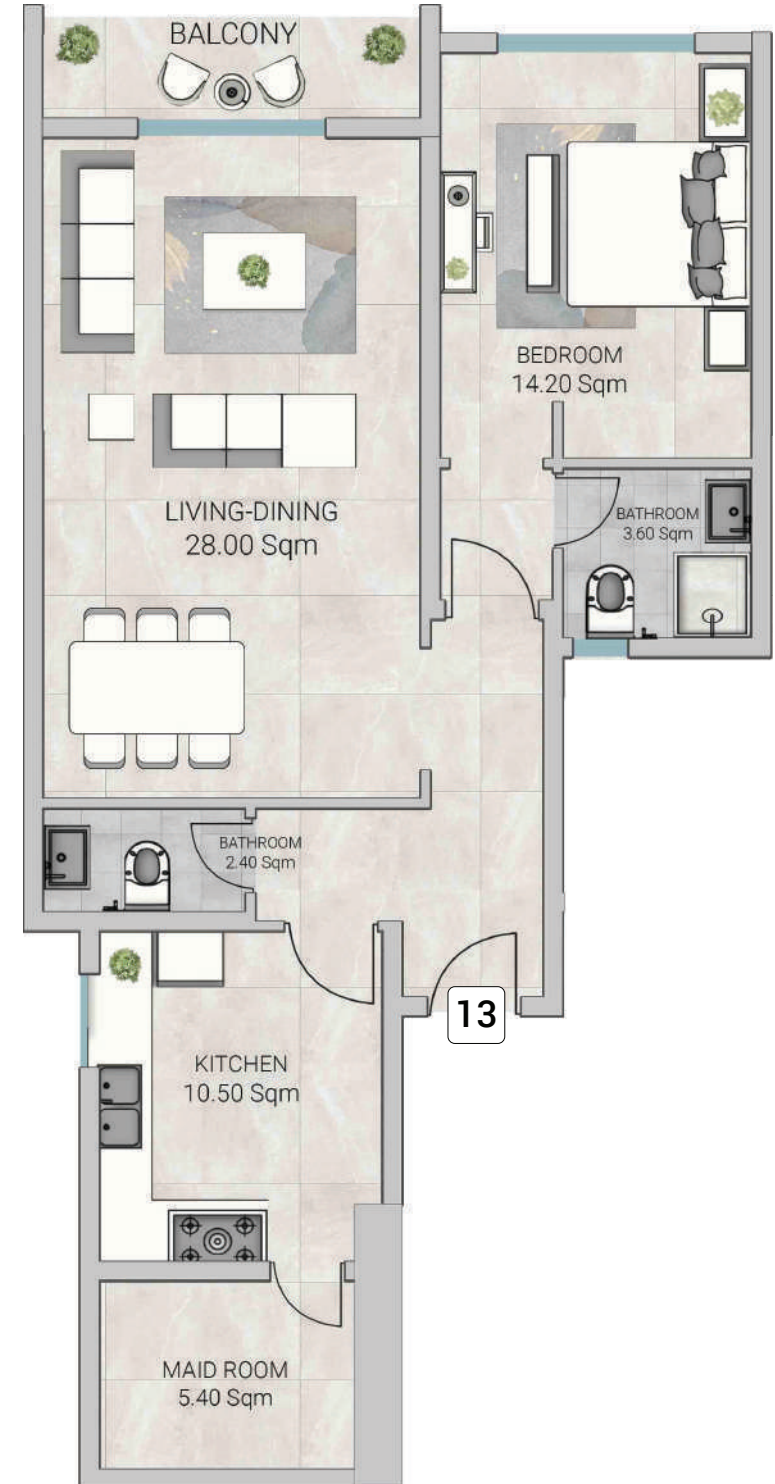
- Disclaimer:**
1. All materials, finishes, dimensions and drawings are approximate.
 2. Information is subject to change without notice.
 3. Actual suite area may vary from the stated area.
 4. Drawings are not to scale.
 5. The Developer reserves the right to make revisions/alterations without any liability whatsoever.

TYPICAL FLOOR 1 BEDROOM

Series no: 013
Gross area 110.45 sqm 1188.90 sqft

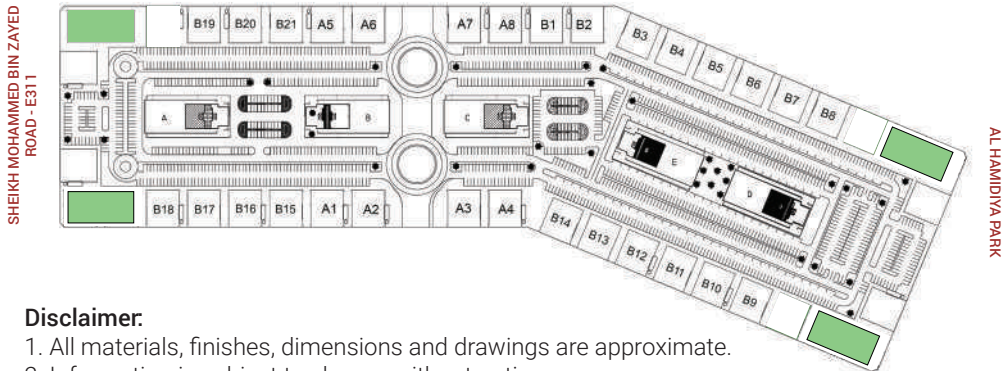
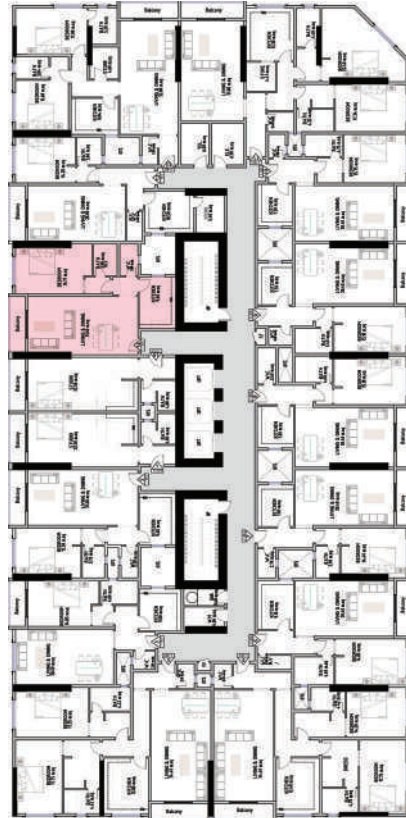


- Disclaimer:**
1. All materials, finishes, dimensions and drawings are approximate.
 2. Information is subject to change without notice.
 3. Actual suite area may vary from the stated area.
 4. Drawings are not to scale.
 5. The Developer reserves the right to make revisions/alterations without any liability whatsoever.

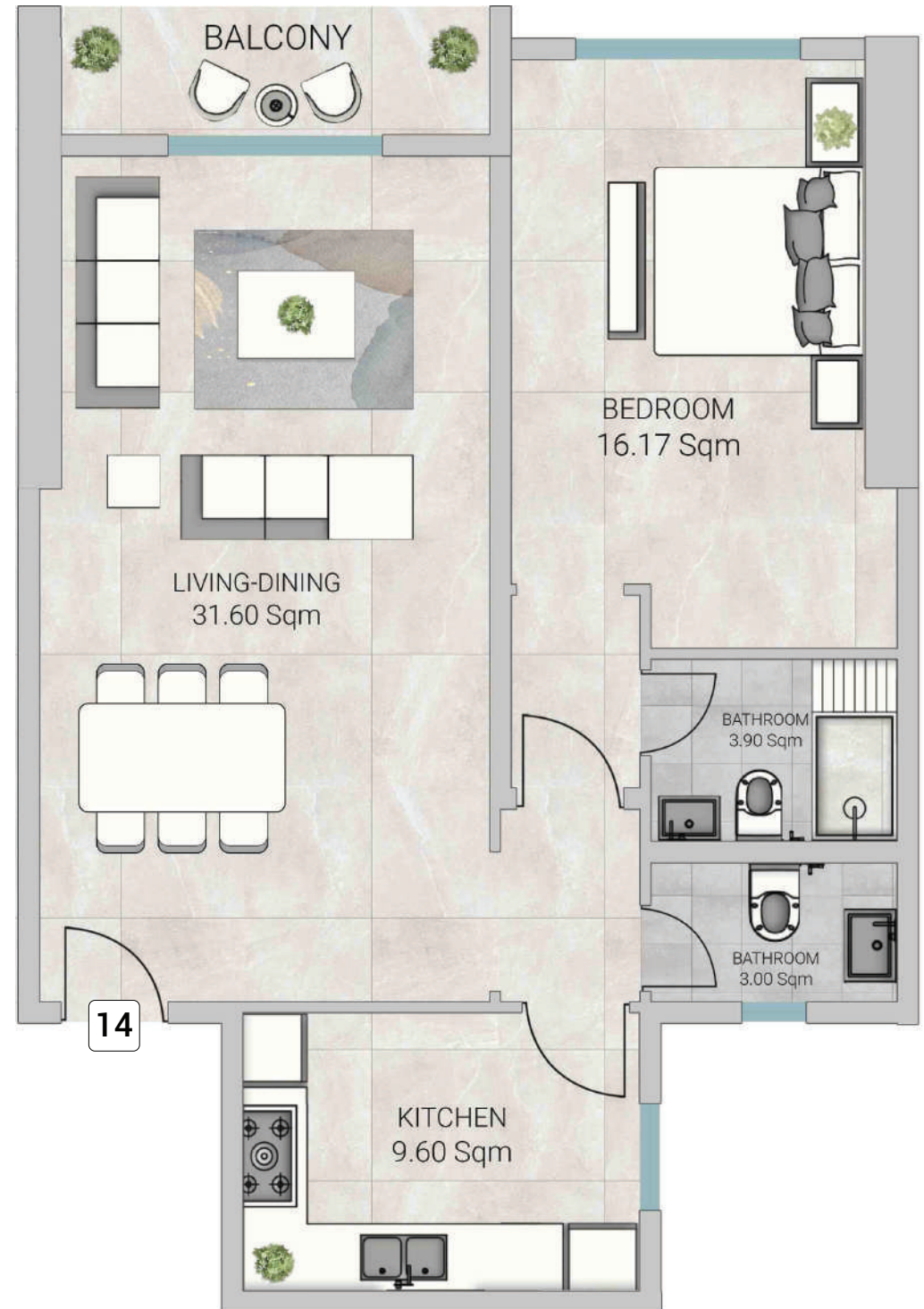


TYPICAL FLOOR 1 BEDROOM

Series no: 014
Gross area 108.27 sqm 1165.40 sqft



- Disclaimer:**
1. All materials, finishes, dimensions and drawings are approximate.
 2. Information is subject to change without notice.
 3. Actual suite area may vary from the stated area.
 4. Drawings are not to scale.
 5. The Developer reserves the right to make revisions/alterations without any liability whatsoever.

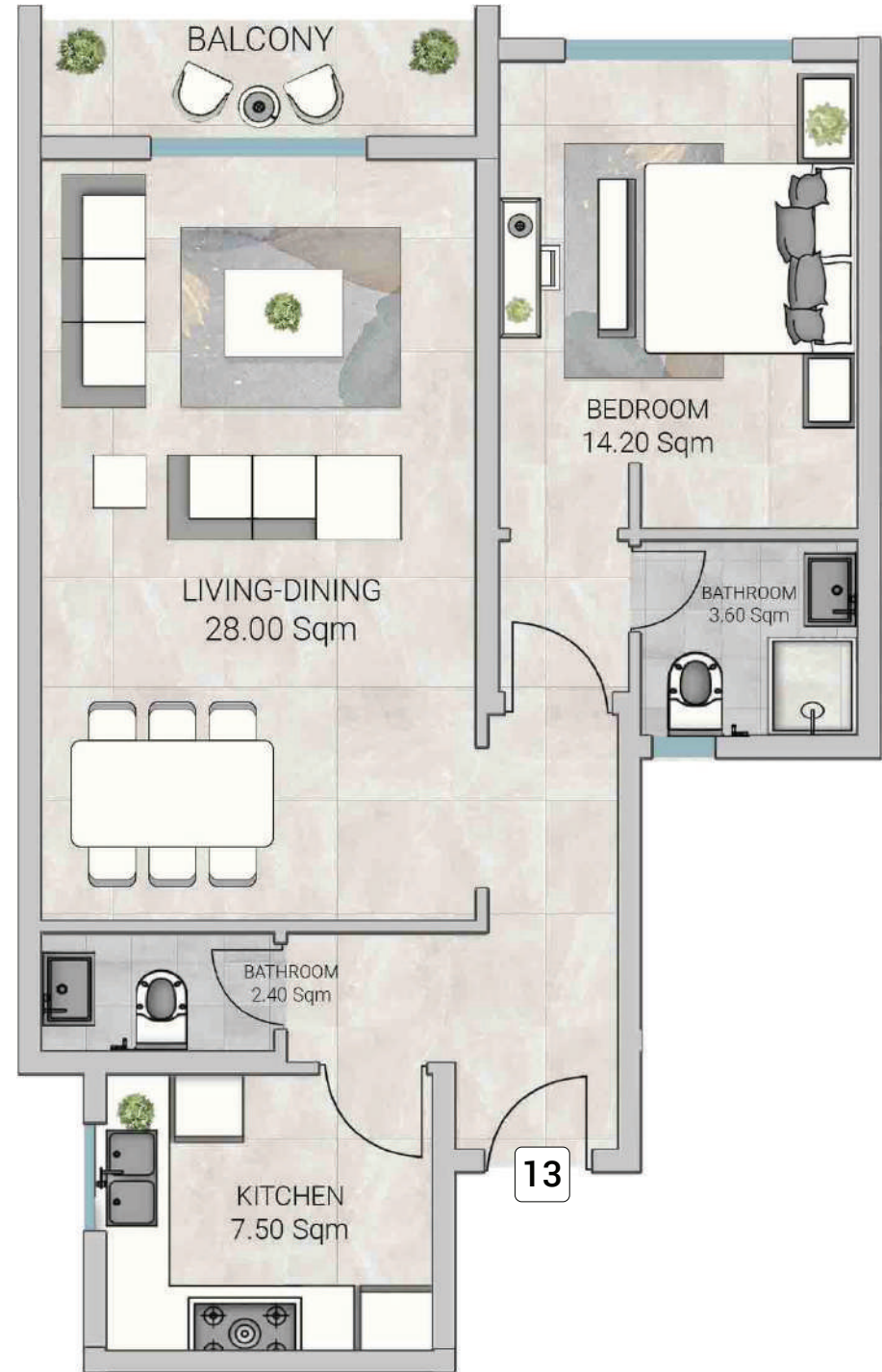
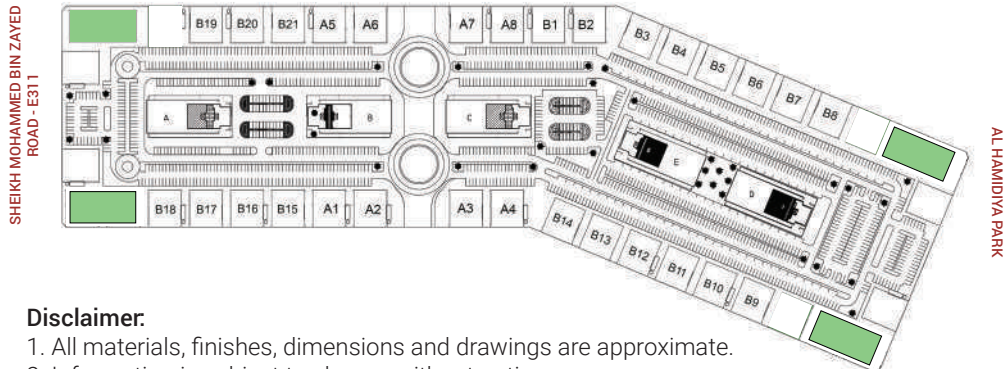
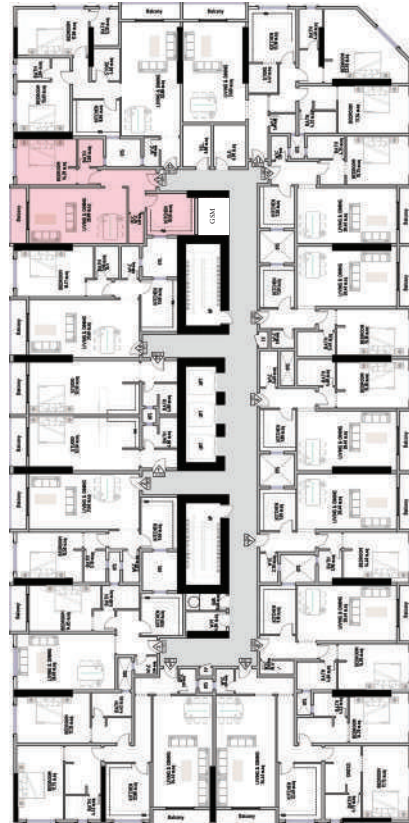
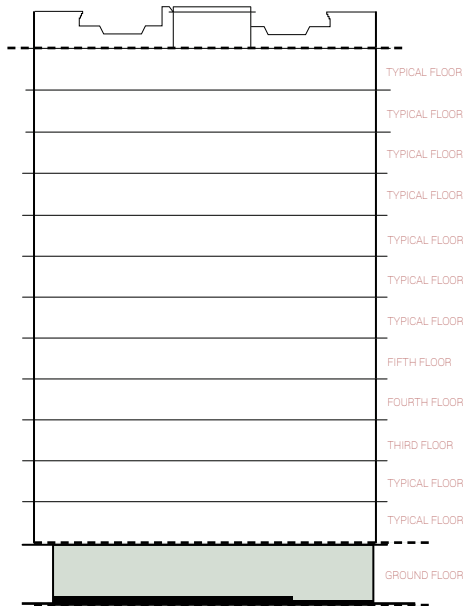


FLOOR PLANS

3RD, 4TH AND 5TH FLOOR

3RD,4TH & 5TH FLOOR 1 BEDROOM

Series no: 013
Gross area 99.20 sqm 1067.81 sqft



- Disclaimer:**
1. All materials, finishes, dimensions and drawings are approximate.
 2. Information is subject to change without notice.
 3. Actual suite area may vary from the stated area.
 4. Drawings are not to scale.
 5. The Developer reserves the right to make revisions/alterations without any liability whatsoever.



AL AMEERA

VILLAGE

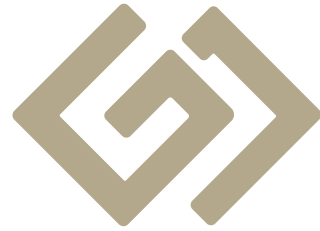
PAYMENT PLANS

PLAN	7 YEARS
DOWN PAYMENT	5%
100% FREEHOLD	



The organisation has consistently demonstrated its commitment to provide clients with truly unique offerings across all parameters of construction and in every aspect of its business. GJ Properties was formed with the goal to develop properties solutions that not only meet, but exceed client expectations - whether it is investment or lifestyle.

The foundation of GJ Properties is the belief that all customers deserve the best service possible. This drive has pushed the entity to work harder towards offering great projects at affordable prices. Having launched various properties in Ajman, including villas, apartments and other large-scale projects, GJ Properties has been consistently achieving great success.



PROPERTIES

THE BETTER CHOICE

GJ Properties is an Ajman based property developer, established in 1998. One of the largest and fastest growing providers of residential, commercial and industrial properties in Ajman, GJ Properties with over 20 years of experience, has been recognized as the **'Best Property Agency' by the Arabian Property Awards 2020-21'**

GJ Properties focused team of highly qualified engineers, architects, and construction personnel demonstrates their superior performance in the properties industry. Stemming from building and maintaining high-quality homes and developments, their design principles are rooted deeply in understanding comfort and convenience - all emerging from a core of ergonomics.

Whether a rental property or a beachfront home, GJ Properties expert team will create exactly what a thriving community needs. GJ Properties ensures every property they develop shall provide comfort and convenience for years to come - even with the changing trends of modern architecture. Devoted to creating homes for generations, GJ Properties has built an elegant legacy of providing the best in quality construction standards and only excellence in customer service.





UAE: +971 58 586 4405
CH: +41 79 777 3773
info@majara-realestate.com
www.majara-realestate.com

MAJARA REAL ESTATE L.L.C
Burj Al Salam Tower, 36th floor
Sheikh Zayed Road
Dubai, U.A.E.

