



VERDANA

NINE

www.majara-realestate.com

The background features a series of overlapping, wavy, diagonal bands in various shades of dark green and black, creating a sense of depth and movement. The bands are most prominent on the left side and fade into the dark background towards the right.

LIVE BEYOND

ABOUT REPORTAGE

At Reportage Group, we're proud to be one of the largest private real estate developers in the United Arab Emirates, with projects spanning the UAE, Egypt, Turkey, Saudi Arabia, Uganda, Azerbaijan, Pakistan, and more international markets on the way.

Our focus is clear and consistent: to deliver innovative, sustainable and accessible modern housing solutions that provide outstanding value for investors and a safe, welcoming home for everyone.

Our mission is to be among the most trusted real estate companies in the world, developing homes that are both modern and attainable, while fostering a true sense of belonging. We're excited for what the future holds and remain committed to expanding our footprint across the globe.





Why Invest in Dubai?

Dubai combines tax-free income with high ROI, making it one of the world's most rewarding investment destinations.

Known for its safety, world-class infrastructure, and luxurious lifestyle, the city offers Golden Visa residency to property investors.

With world-class education and healthcare, every home in Dubai is a gateway to prosperity, security, and quality living.

Dubai Investment Park: A Smart Urban Hub

Life here finds its balance, slowing down just enough to feel authentic, without losing touch with the city. Ideally located near Expo City and Al Maktoum International Airport, with seamless highway access, DIP is where homes, schools, retail, and business coexist in harmony.

In the heart of it, Verdana 9 is a calm retreat with the city always within reach.



VERDANA

Live Beyond

In the heart of tomorrow, where Dubai stretches forward, Verdana rises. A bold step beyond the expected. Here, you don't just move, but you evolve beyond the rush, the noise, the limits, into space, into stillness, into freedom.

At Verdana, you don't just own a home, you claim a sanctuary. A symbol of independence, a first breath of something truly yours. This is where the city fades, and you find room to walk, to wander and to reconnect not just with nature, but with the truest version of yourself.

Verdana is for those who live beyond convention, beyond boundaries, beyond just "now". A home made for tomorrow's dreamers, today's pioneers, and the quiet confidence of those who know life is more than just living.







CONNECTED LIVING AT VERDANA

Nestled in the heart of Dubai Investments Park, Verdana 9 offers seamless access to the city's most iconic destinations. From the buzzing Dubai Marina and thrilling Dubai Parks to the iconic Palm Jumeirah, Burj Khalifa, and Mall of the Emirates, everything is just moments away. Here, urban vibrancy meets peaceful green surroundings, striking the perfect balance between connection and calm.



CENTERED LOCATION IN DUBAI

- 11 minutes driving to Expo City Dubai
- 18 minutes driving to Dubai Marina
- 18 minutes driving to Dubai Park and Resorts
- 20 minutes driving to Palm Jumeirah
- 21 minutes driving to Global Village
- 21 minutes driving to Al Barsha Mall
- 23 minutes driving to Mall of the Emirates
- 24 minutes driving to IMG World
- 26 minutes driving to Burj Khalifa/Dubai Mall





Project Details

A perfect blend of townhouses and apartments, built to elevate your lifestyle.

- **Type:** Townhouses & Apartments
- **Plot Area:** 36,627.42 sq.m.

Total Units:

- 204 Townhouses
- 256 Apartments





Lifestyle services

Private Parkings for each unit

Large Swimming Pool

Kids' Swimming Pool

Gymnasium

Clubhouse

Shaded Seating Areas

Landscape Areas

Large Elevators

Kids' Play Area



Unit Mix

Find your ideal home at Verdana, designed to match your lifestyle and family size.

Verdana 9 Townhouses:

- Two Bedrooms: 53
- Three Bedrooms: 37
- Four Bedrooms: 114

Total No. of Units : 204

Verdana 9 Residences:

- Studios: 78
- One Bedroom: 78
- Two Bedrooms: 100

Total No. of Units : 256







Unit Features

Private Balconies / Terraces as per unit plan

Kitchen cabinets and countertops

Built-in wardrobes in bedrooms

Master bedrooms in some townhouses

Laundry & Maid Room in some townhouses

Double Height Living room in some townhouses

Sky roof in some townhouses



UNIT TYPES

All drawings and dimensions are approximate. Drawings are not to scale and are subject to change without notice. The developer reserves the right to make revisions. The units are measured at typical floors in the building and columns may vary in size depending on the floor level. The furnishing and accessories shown are for representation only.

The availability, length and width of the balcony varies depending on which floor and which orientation the unit is located within the building. There will be slight differences in the internal areas between the same unit types depending on the shaft sizes that go through the units.

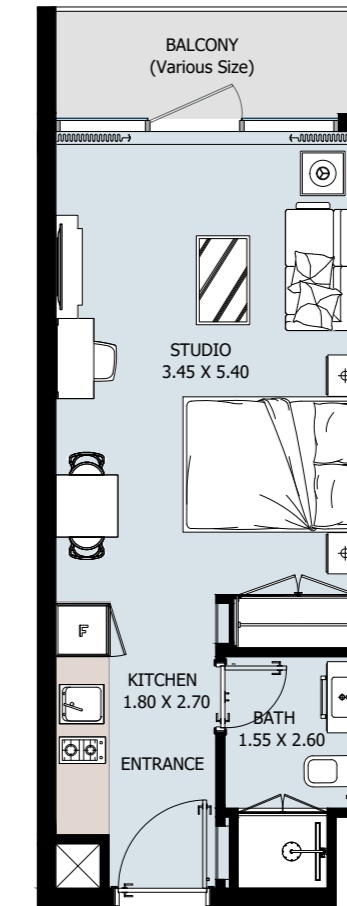
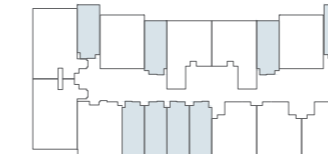
STUDIO Type A

From 1st to 15th Floor

From 2nd to 15th Floor



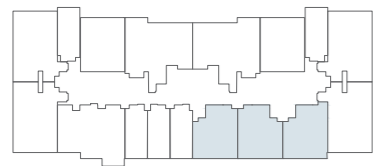
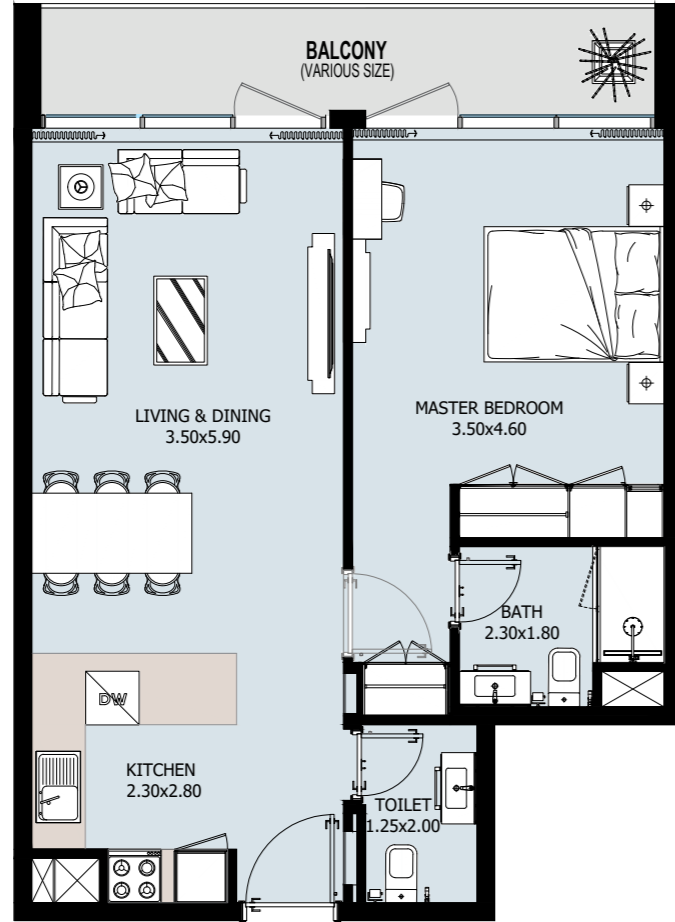
First Floor



Internal Area	344.44 sq.ft
Outdoor Area	45.85 to 123.46 sq.ft
Total Area	390.30 to 467.91 sq.ft

1 BEDROOM Type A

From 1st to 15th Floor

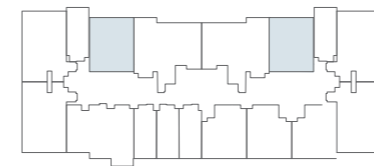
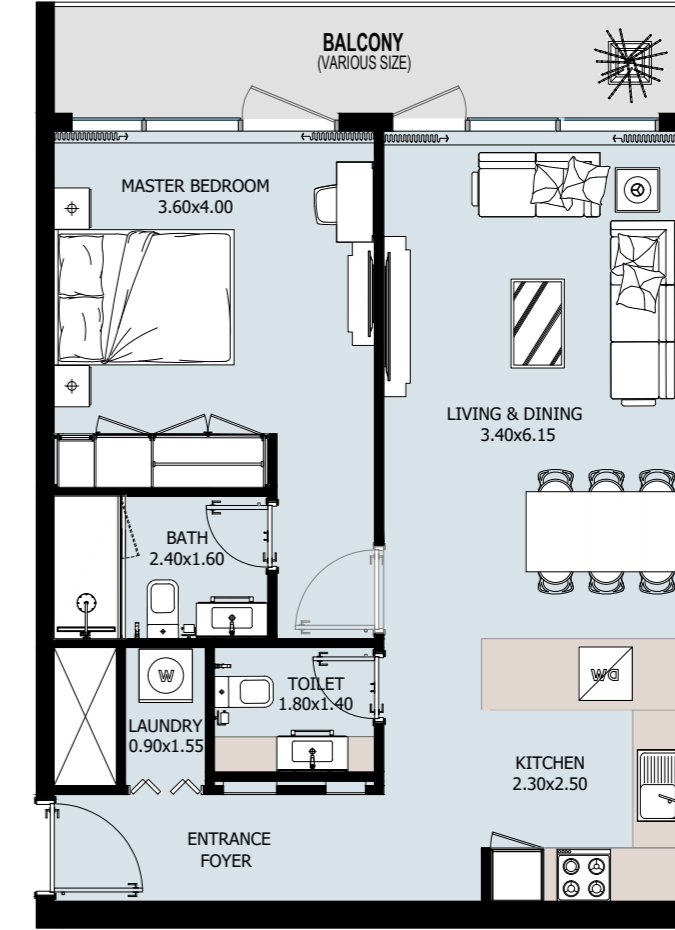


VERDANA
NINE

Internal Area	647.88 sq.ft
Outdoor Area	94.29 to 228.19 sq.ft
Total Area	742.17 to 876.07 sq.ft

1 BEDROOM Type B

From 1st to 15th Floor

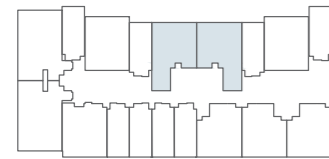
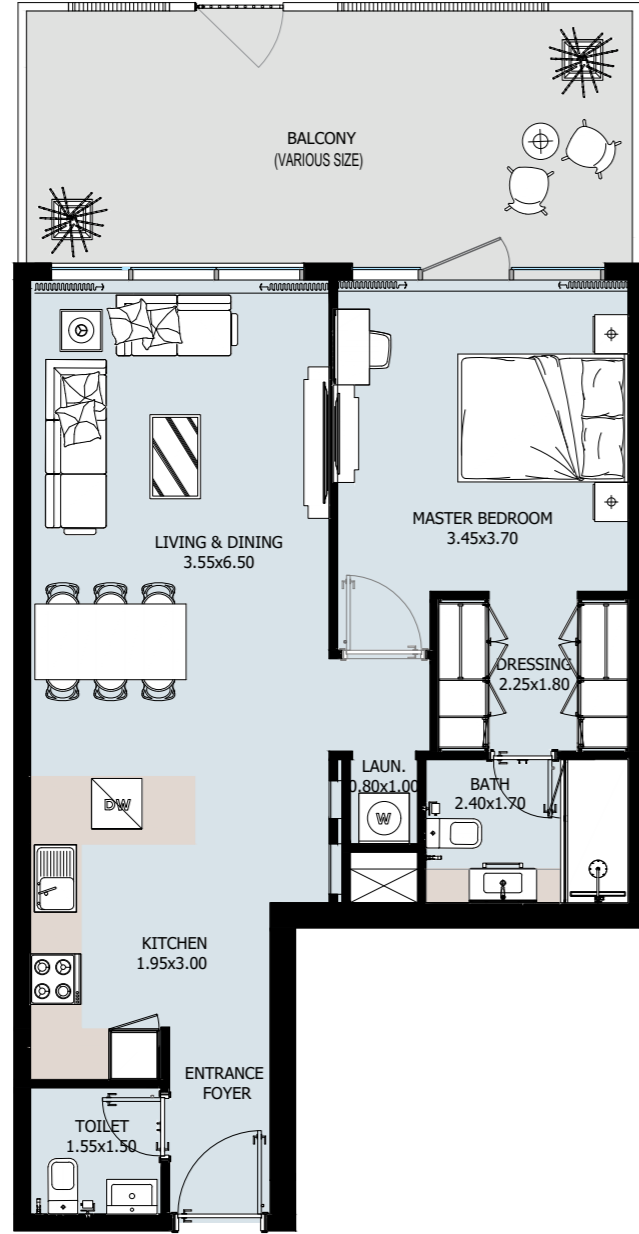


VERDANA
NINE

Internal Area	694.59 sq.ft
Outdoor Area	96.88 to 175.88 sq.ft
Total Area	791.47 to 870.48 sq.ft

1 BEDROOM Type C

1st Floor

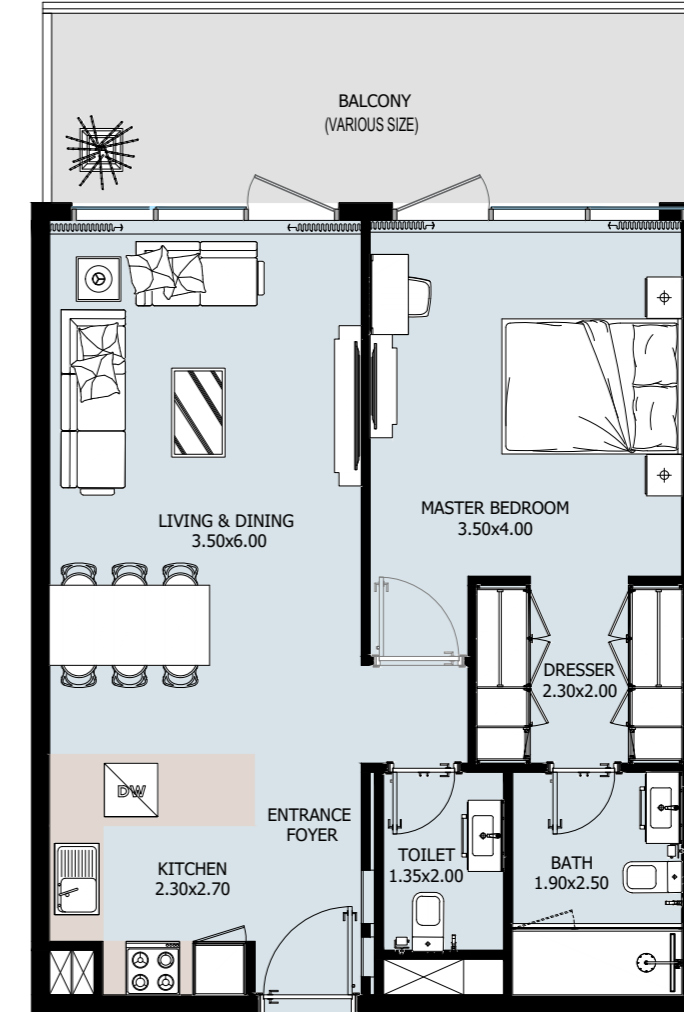


VERDANA
NINE

Internal Area	717.52 sq.ft
Outdoor Area	251.44 sq.ft
Total Area	968.97 sq.ft

1 BEDROOM Type D

1st Floor

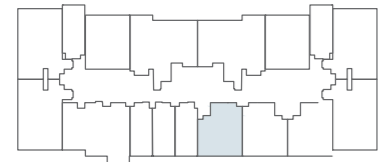
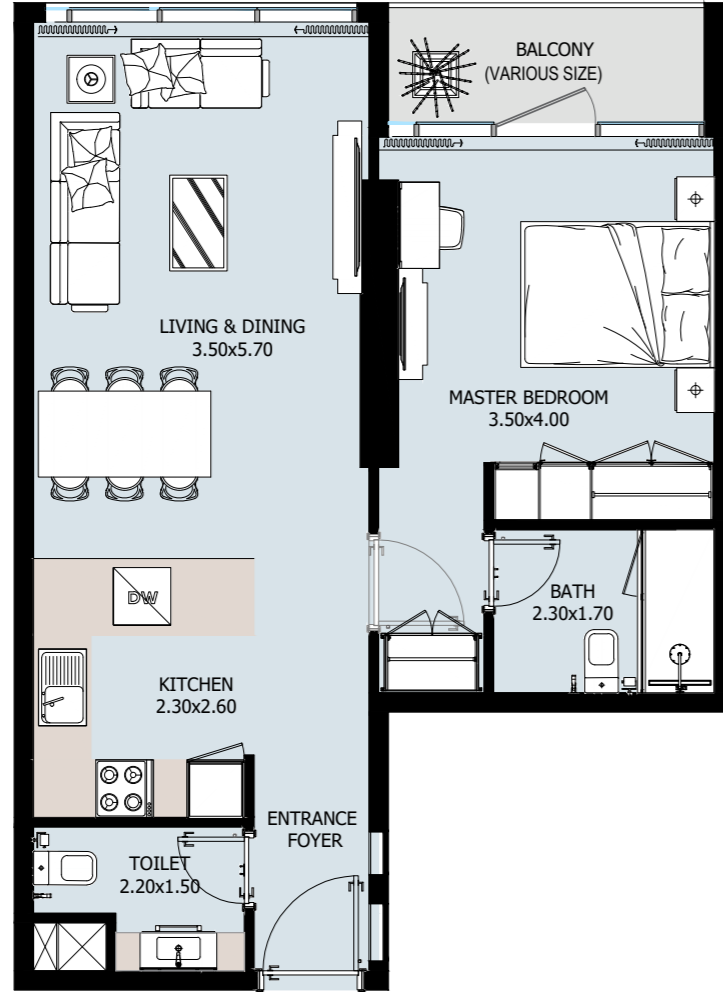


VERDANA
NINE

Internal Area	695.13 sq.ft
Outdoor Area	178.03 sq.ft
Total Area	873.17 sq.ft

1 BEDROOM Type E

9th Floor

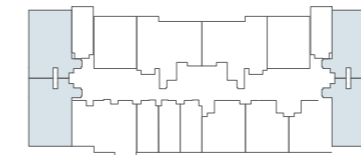
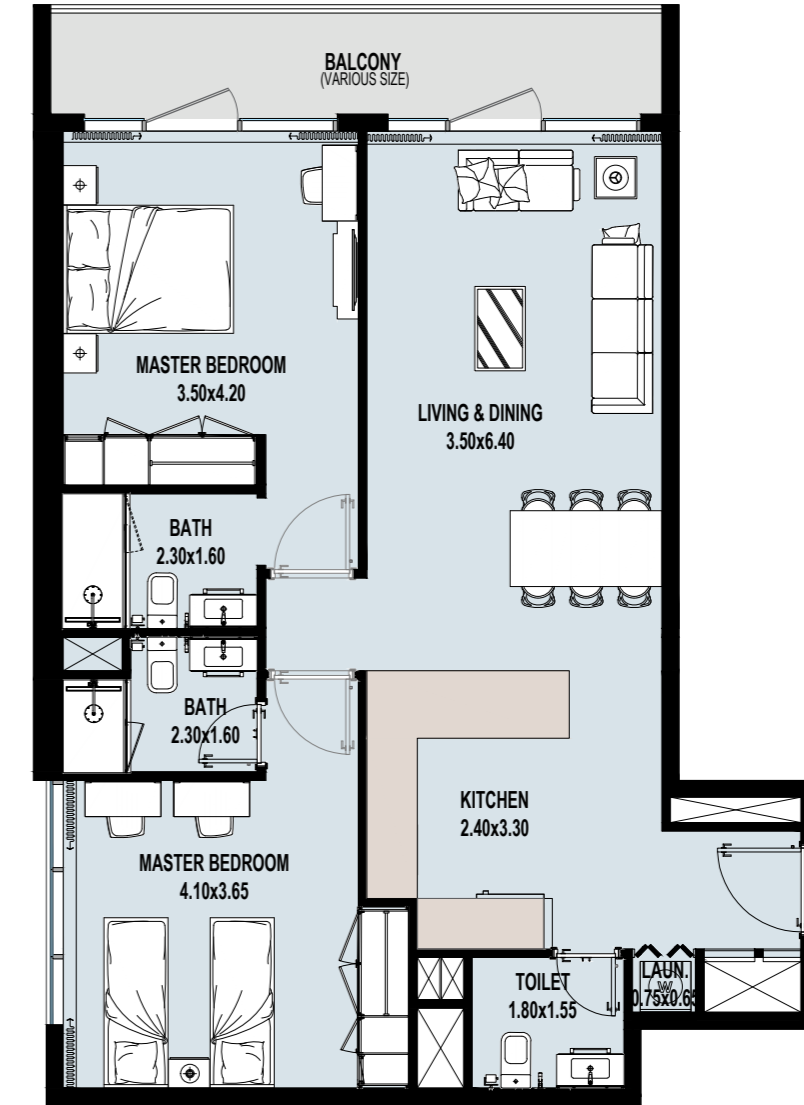


VERDANA
NINE

Internal Area	638.73 sq.ft
Outdoor Area	94.29 sq.ft
Total Area	733.02 sq.ft

2 BEDROOM Type A

From 1st to 15th Floor



VERDANA
NINE

Internal Area	937.86 sq.ft
Outdoor Area	71.58 to 1483.27 sq.ft
Total Area	1009.44 to 2421.12 sq.ft

2 BEDROOM Type B

From 2nd to 15th Floor

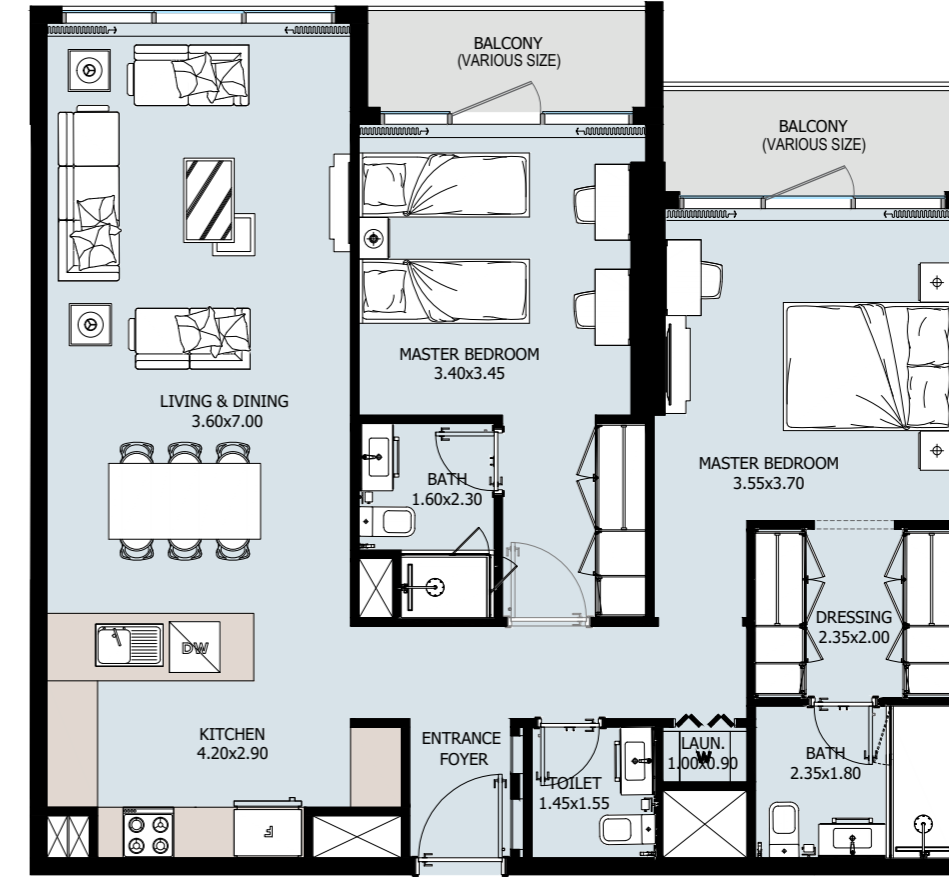


Internal Area	1075.31 sq.ft
Outdoor Area	129.27 sq.ft
Total Area	1204.59 sq.ft

VERDANA
NINE

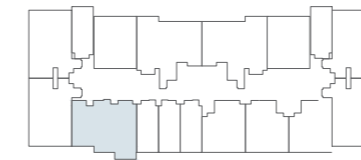
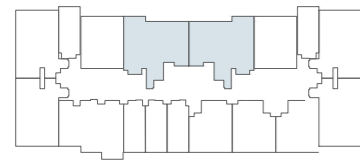
2 BEDROOM Type C

From 2nd to 15th Floor

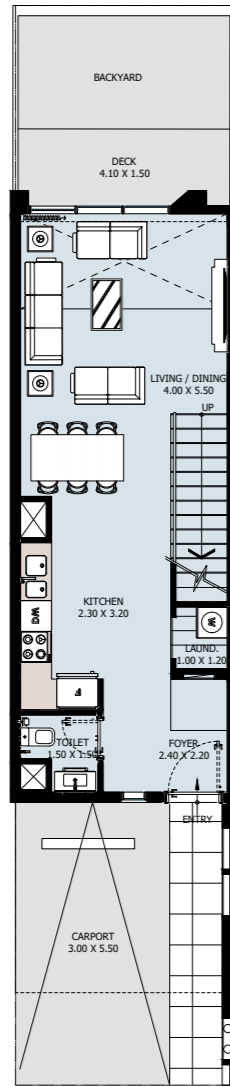


Internal Area	1050.77 sq.ft
Outdoor Area	93.00 sq.ft
Total Area	1143.77 sq.ft

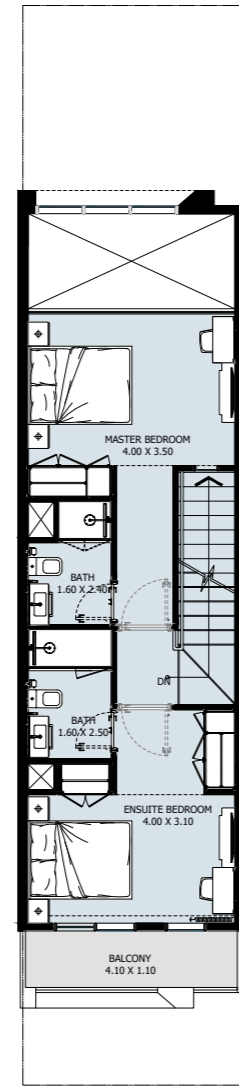
VERDANA
NINE



2 BR TOWNHOUSE Type A



GROUND FLOOR

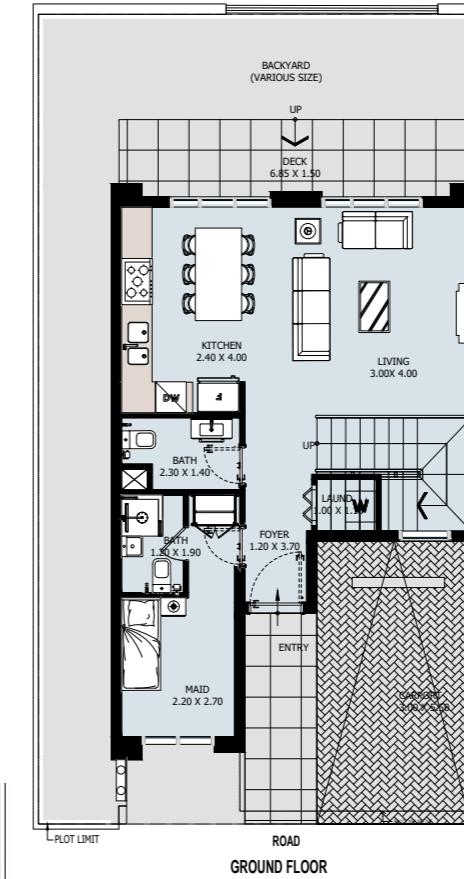


1ST FLOOR

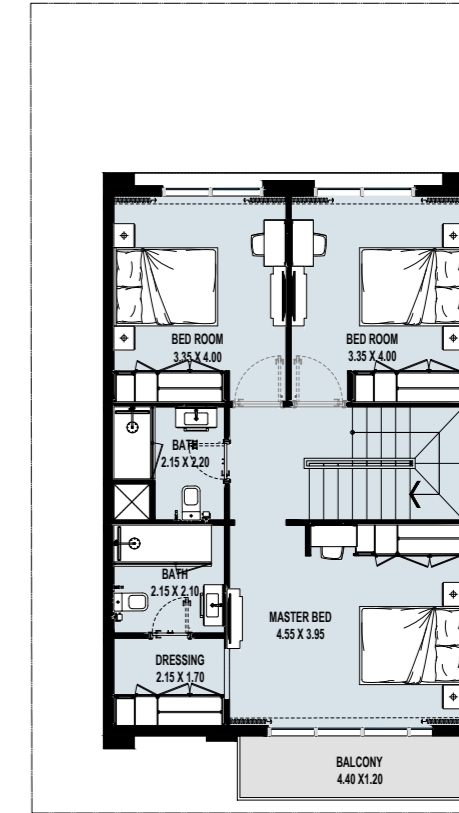
VERDANA
NINE

Internal Area	1074.13 to 1101.79 sq.ft
Outdoor Area	533.1 to 2654.66 sq.ft
Total Area	1607.23 to 3756.46 sq.ft

3 BR TOWNHOUSE Type A



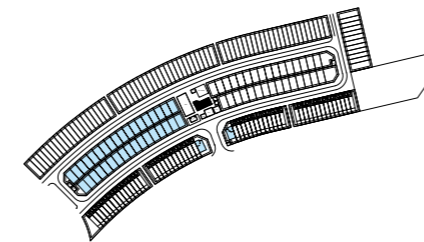
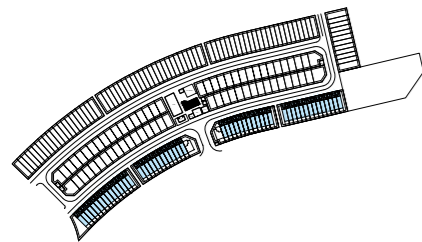
GROUND FLOOR



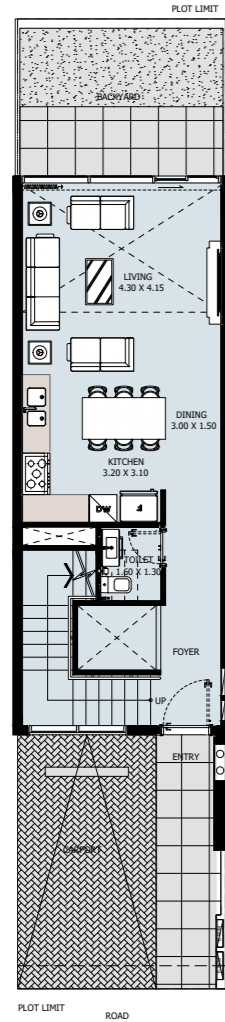
FIRST FLOOR

VERDANA
NINE

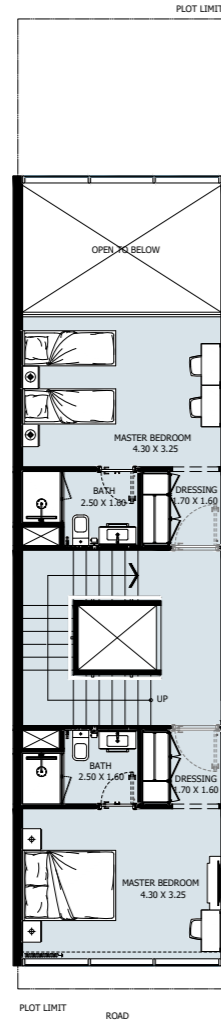
Internal Area	1543.11 sq.ft
Outdoor Area	961.32 to 2343.77 sq.ft
Total Area	2504.44 to 3886.88 sq.ft



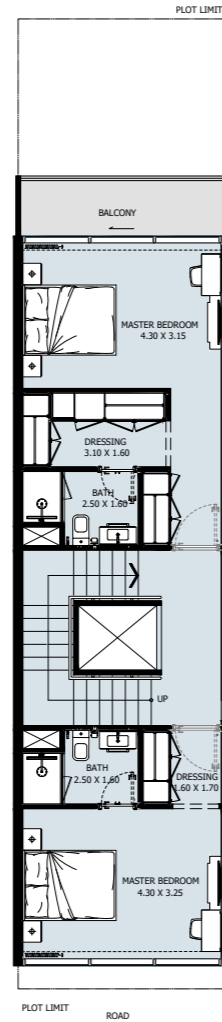
4 BR TOWNHOUSE Type A



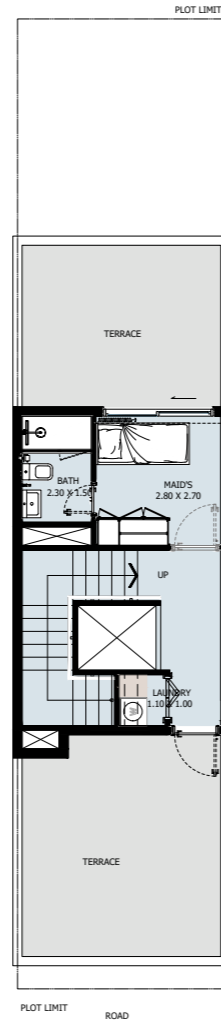
GROUND FLOOR



1ST FLOOR



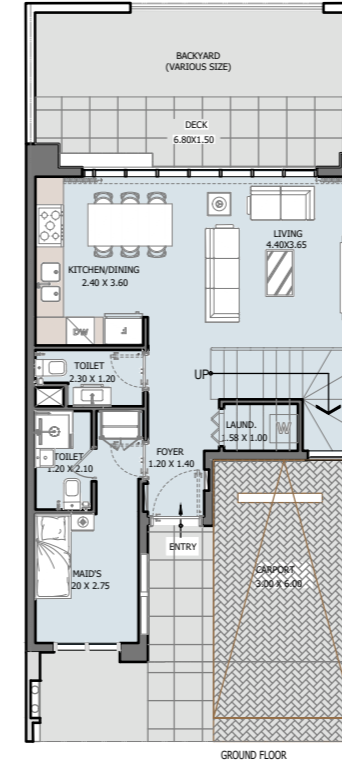
2ND FLOOR



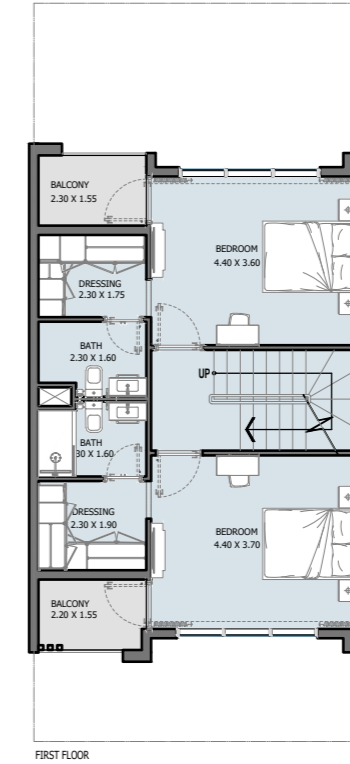
3RD FLOOR

VERDANA
NINE

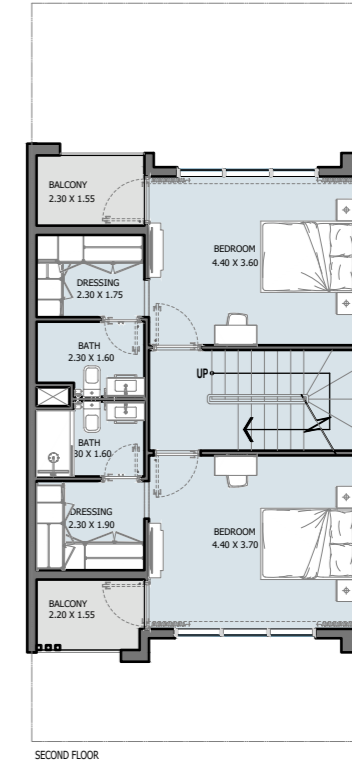
4 BR TOWNHOUSE Type B



GROUND FLOOR

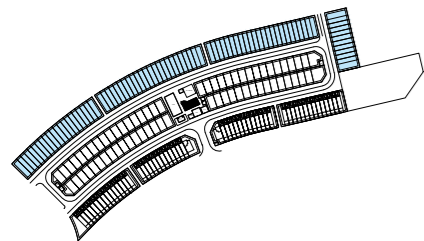


FIRST FLOOR

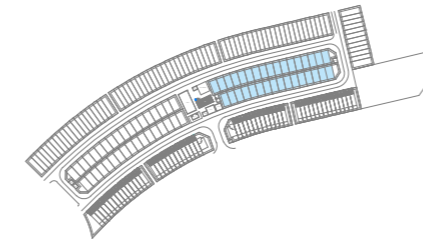


SECOND FLOOR

VERDANA
NINE



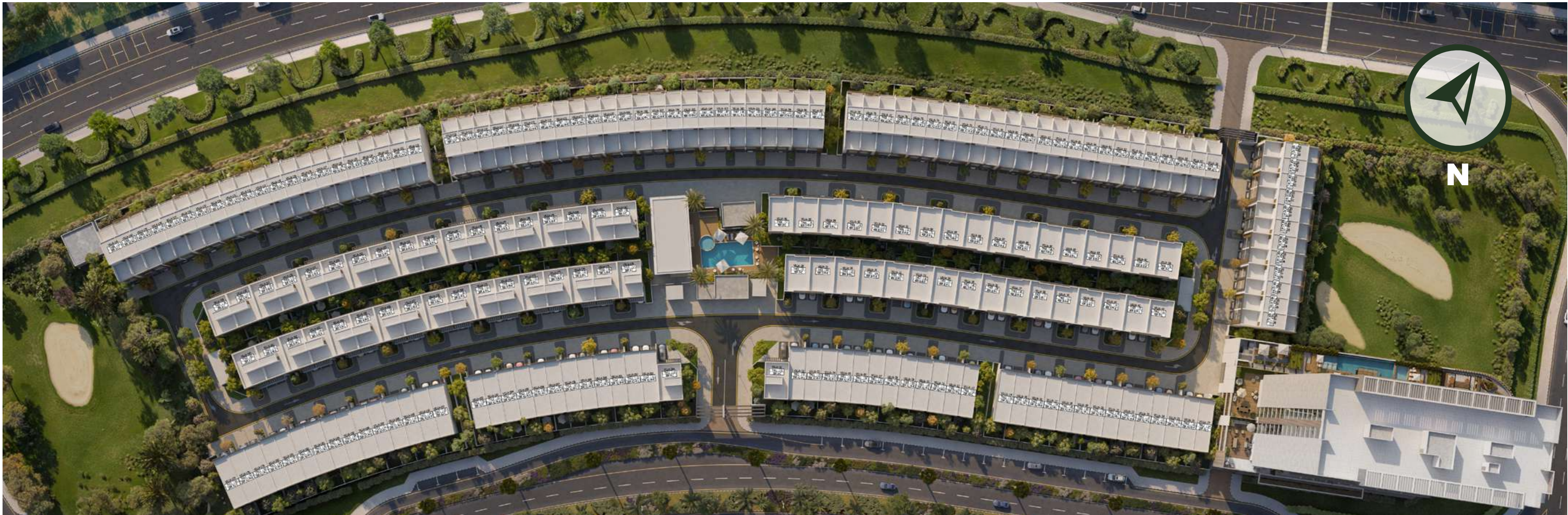
Internal Area	2292.07 to 2292.5 sq.ft
Outdoor Area	972.01 to 1706.92 sq.ft
Total Area	3264.07 to 3999.42 sq.ft



Internal Area	1981.74 sq.ft
Outdoor Area	748.63 to 1731 sq.ft
Total Area	2730.37 to 3712.75 sq.ft



VERDANA
MASTERPLAN



Reportage.

Lagos, Nigeria

No. 2 Obudu Close, Osborne Foreshore Estate,
Phase 1, Ikoyi, Lagos Nigeria
+234 810 859 9924
Info@reportage.ng

Nairobi, Kenya

46 Kabasiran, Lavington
P.O. box 38802-00623
Tel. +254 754 108108 / +254 208 108108

Abu Dhabi-UAE | Head Office

Tamouh Tower
28th Floor, Al Reem Island
P.O. Box: 111949
Tollfree: +971 800 77 55 2
info@reportageuae.com

Dubai-UAE

Anantara Business Tower
3rd Floor, Business Bay
P.O. Box: 27446
Tollfree: +971 800 77 55 2
info@reportageuae.com

Cairo-Egypt

Building 217
North Teseen St.
New Cairo
T: +20 12 0008 1190
info@reportageeg.com

Istanbul-Türkiye

Maslak Mh. Sümer Sk.
No:4, İç Kapı No:3, Bodrum Kat,
Maslak Office Building (MOB) Sanyer
T: +90 530 774 9595
info@reportage.com.tr

Riyadh-KSA

Building No. 3230
Al Aflaj St., Al Suwaidi
P.O. Box 12791
T: +966 11 215 1110
info@reportageuae.com

Moscow-Russia

Yefremova Street 10s1, k4/4
bld sadovye kvartaly
P.O. Box 119048
info@reportagerussia.com

Kampala, Uganda

Plot 4, Philip Road
Near German Embassy
Kololo, Kampala, Uganda
+256 756 111 434 | +256 763 331 572
info@reportageug.com

Lahore - Pakistan

Plaza No. 185, Broadway
Commercial phase 8, DHA Lahore
+923309991111
Info@reportageempire.com

Kigali, Rwanda

KG 334 ST 10, Nyarutarama,
Kigali, Rwanda
+250738532168 | +250794100607
info@reportagerw.com

For more information, visit reportageuae.com
or call 800 77 55 2 | +971 50 244 1078



Legal Disclaimer:

The information contained in this brochure is confidential and is for the exclusive use of the recipient. This brochure may not be reproduced, distributed, delivered, or furnished to any person without the prior written approval of Reportage Properties. No representation or warranty (expressed or implied) is made or can be given with respect to the accuracy or completeness of the information herein, or that any future offer of units or apartments in the project will conform to the terms described herein. Nothing in this leaflet should be construed as financial, legal, tax or regulatory advice. All accessories such as electronics, furniture, white goods, decorative elements and so forth included in this brochure are not part of the standard unit and used for illustration purposes only. All plans, layouts, pictures, renderings, information and details included in this brochure are indicative only and may change at any time up to the final 'as built' status in accordance with final designs of the project and regulatory approvals and planning permissions.





VERDANA

NINE

www.majara-realestate.com