

**RUBY**

**Ruby Residences: A Jewel of Sophisticated Living in Dubai**



# MAJARA LUXURY REAL ESTATE LLC

Head Office Level 36-01, Po Box :124382 , Trade Center 1, Sheikh Zayed Road , Burj Al Salam Tower Dubai UAE

**Majara Unveils Ruby Residences at JVC, Dubai**

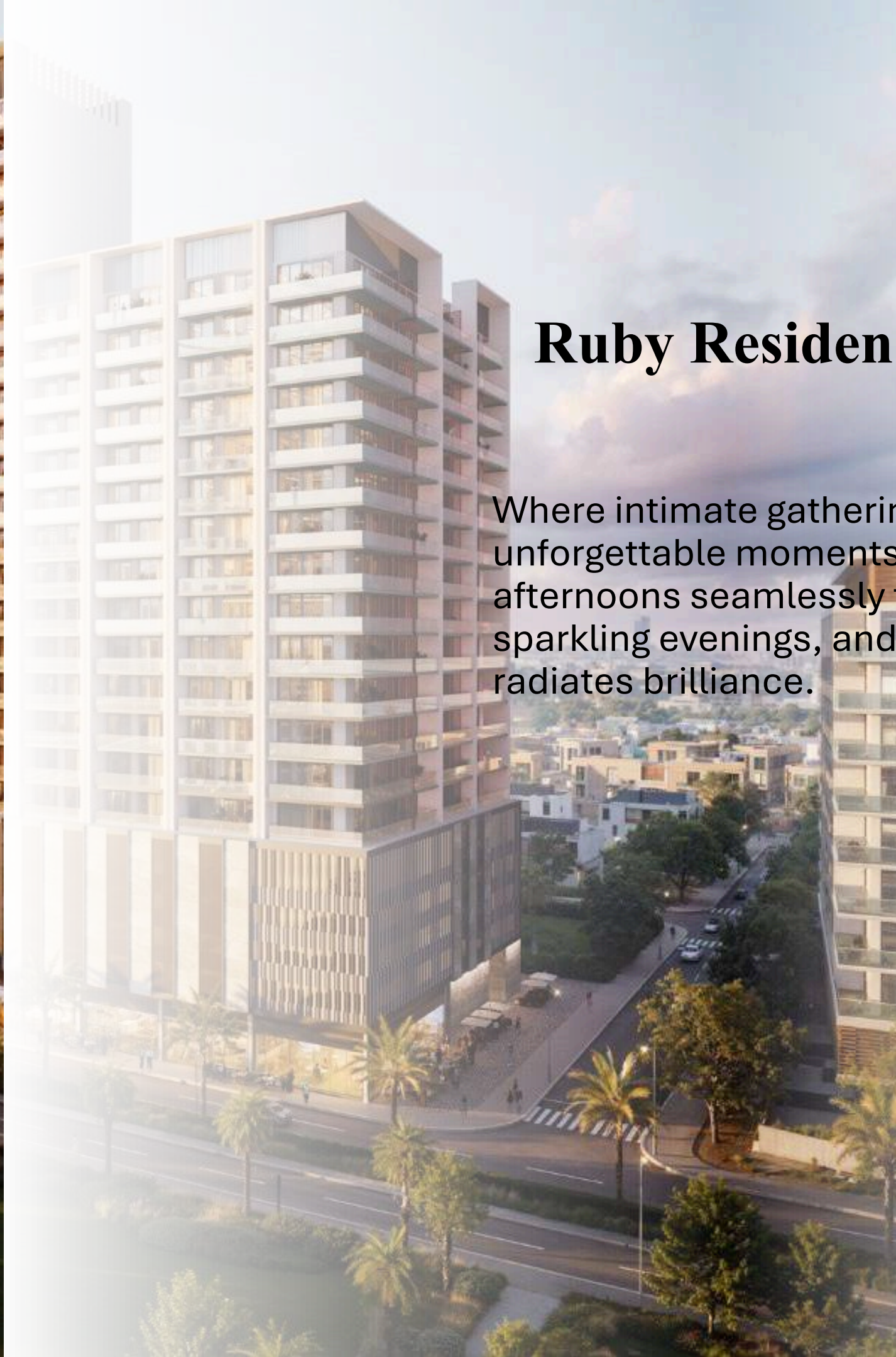


## Captured in a Singular Form, Radiating Fiery Brilliance

Rising with grandeur, **Ruby** is sculpted and refined, its façade aglow with the rich hues of crimson and gold. A masterpiece where legend converges with the vibrant pulse of the world, **Ruby** makes an indelible statement. Its architecture is a harmonious blend of contrasts, effortlessly merging with the dynamic cityscape while standing out with a strikingly unique and captivating exterior. A true testament to brilliance, **Ruby** redefines the skyline.







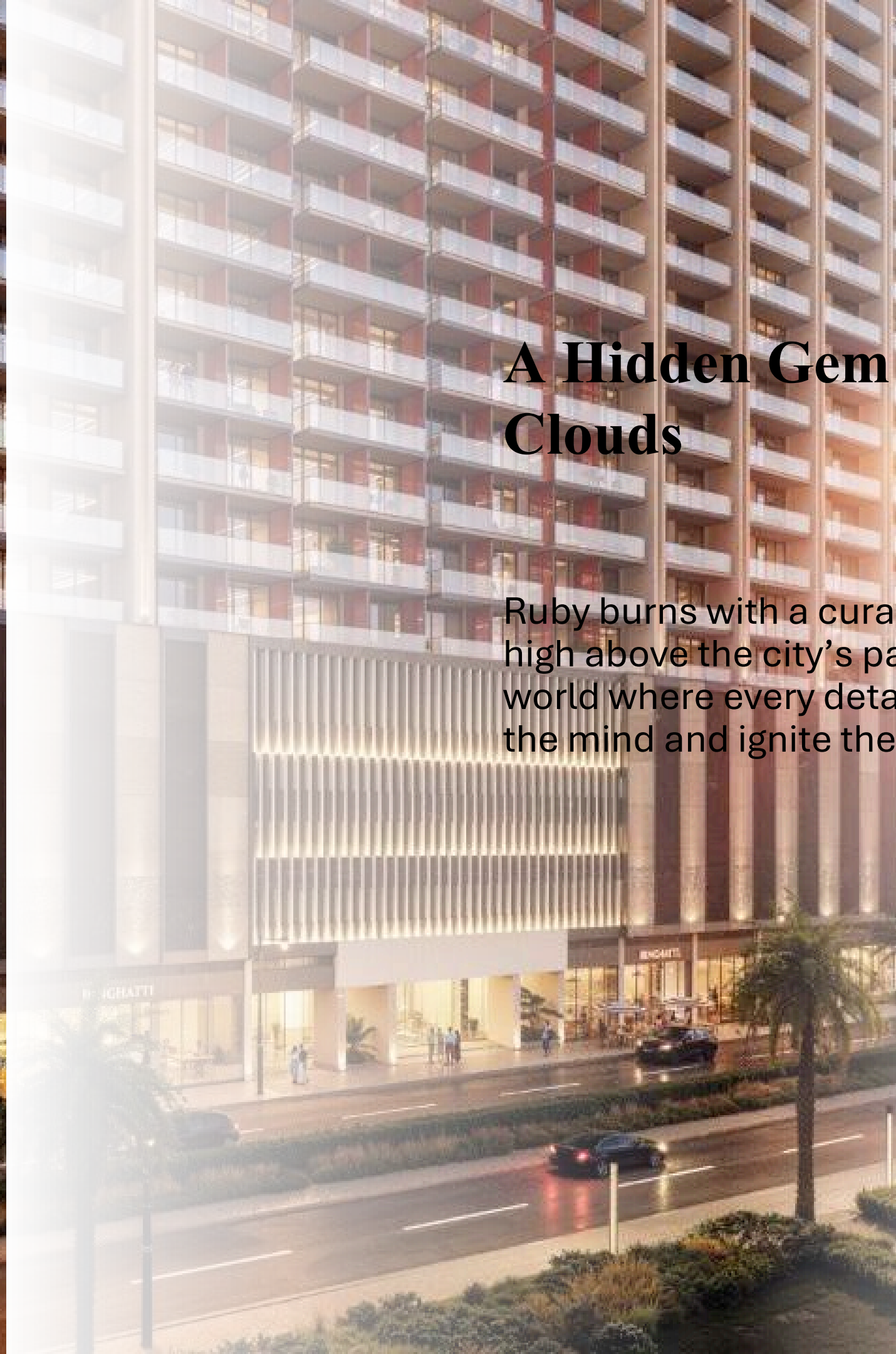
## Ruby Residences

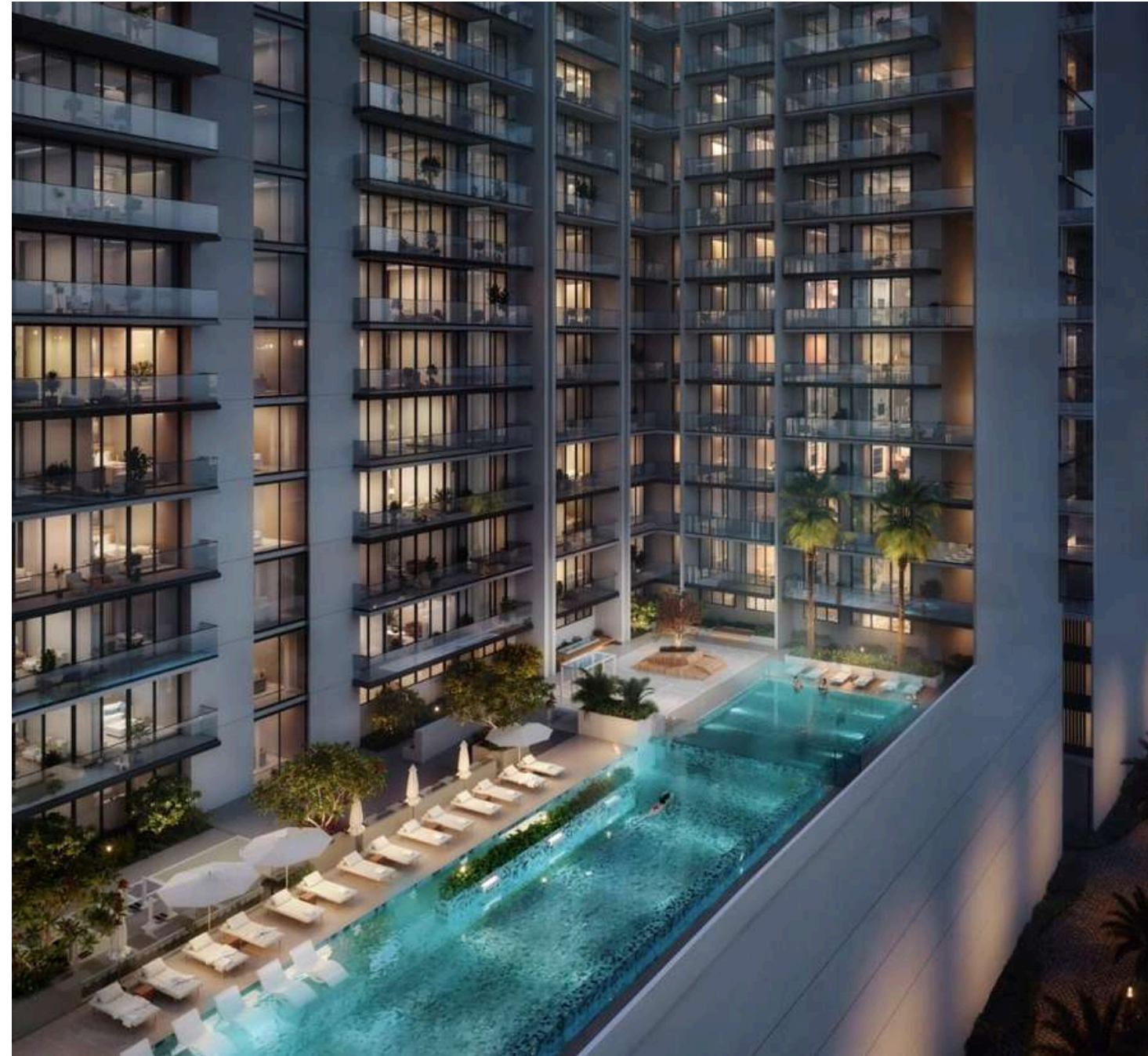
Where intimate gatherings ignite unforgettable moments, sun-drenched afternoons seamlessly transition into sparkling evenings, and every facet of life radiates brilliance.



## A Hidden Gem Above the Clouds

Ruby burns with a curated fire. A treasure, high above the city's pace. Step into a world where every detail is crafted to ease the mind and ignite the soul





## Curated Shared Spaces, Designed for Meaningful Connections



**Ruby** invites those who seek timeless elegance to embrace it fully. Nestled in the vibrant heart of Jumeirah Village Circle, this residence offers a sanctuary of tranquility, where discerning individuals can find a home that reflects their aspirations, inspiring both peace and grandeur amidst the city's energy.



## Anchored in Peace, Positioned in the Pulse of the City

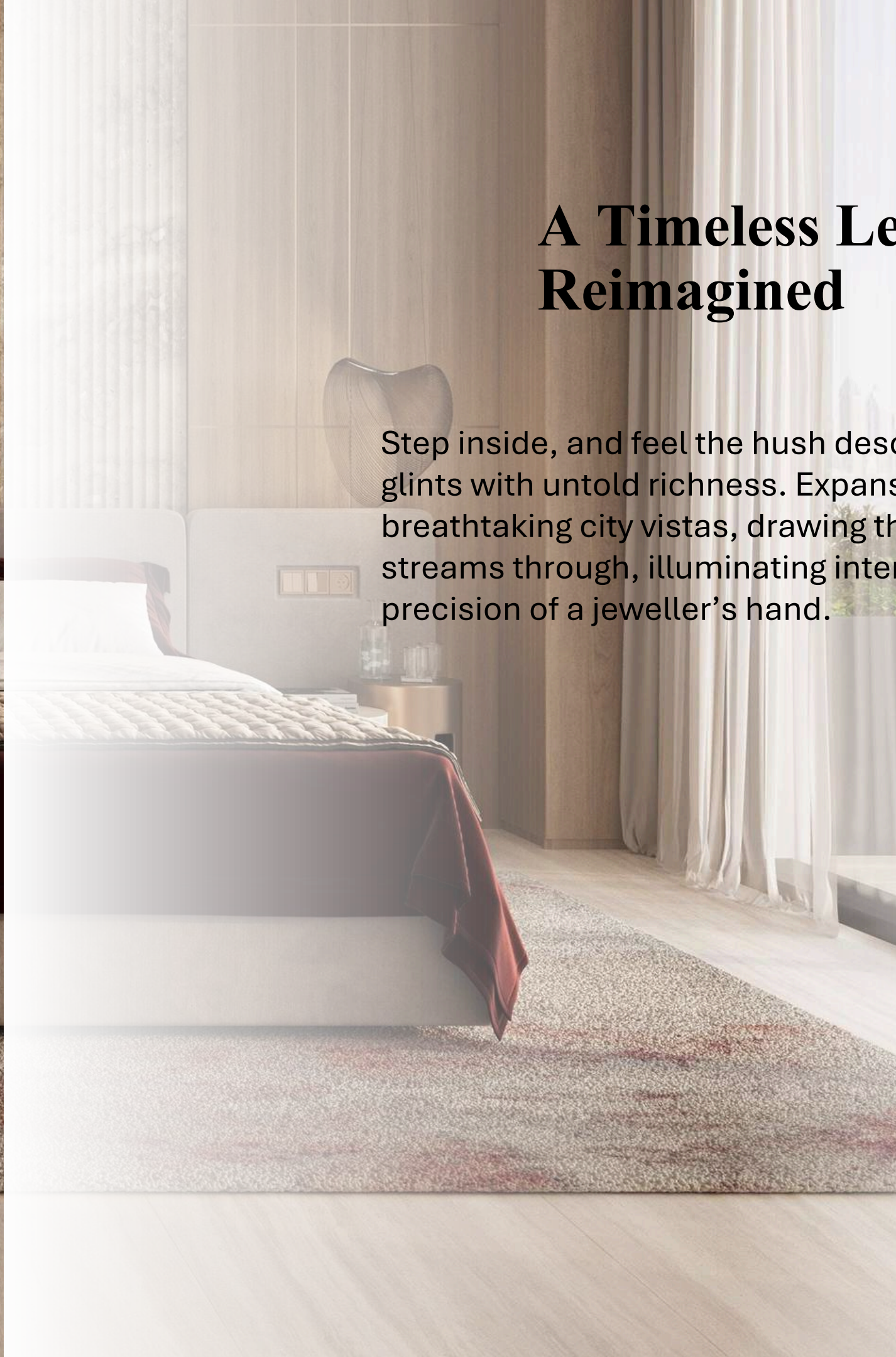


**Ruby** is a sanctuary of refined luxury, where every detail is thoughtfully crafted, from the cool elegance of marble to the natural warmth of wood. Located in the heart of JVC, it offers seamless access to major road networks, bringing the iconic Burj Khalifa, the pristine beaches of Jumeirah, and the best of Dubai within effortless reach.



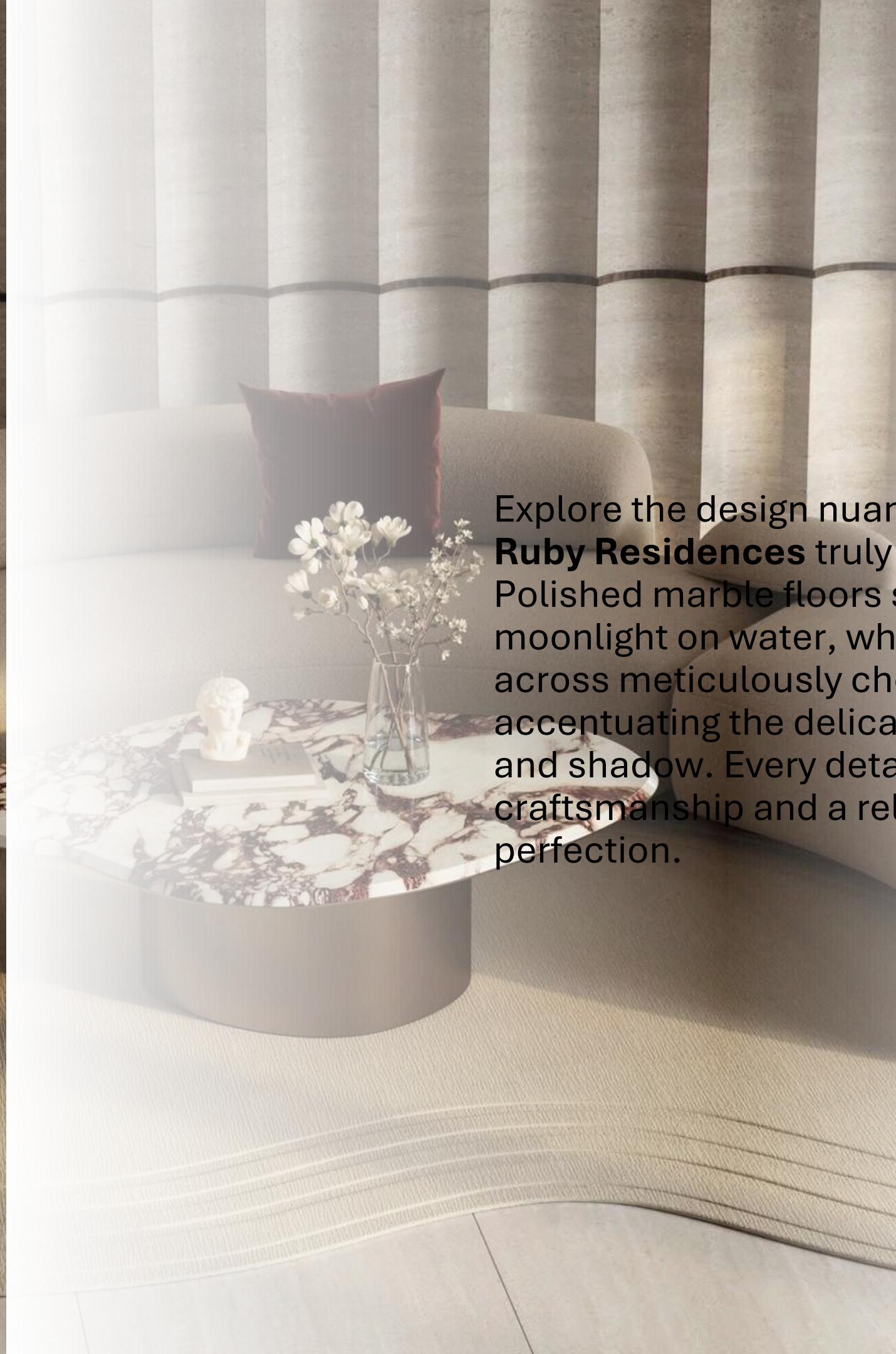
## A Timeless Legend Reimagined

Step inside, and feel the hush descend. Here, every surface glints with untold richness. Expansive windows frame breathtaking city vistas, drawing the outside in. Sunlight streams through, illuminating interiors crafted with the precision of a jeweller's hand.





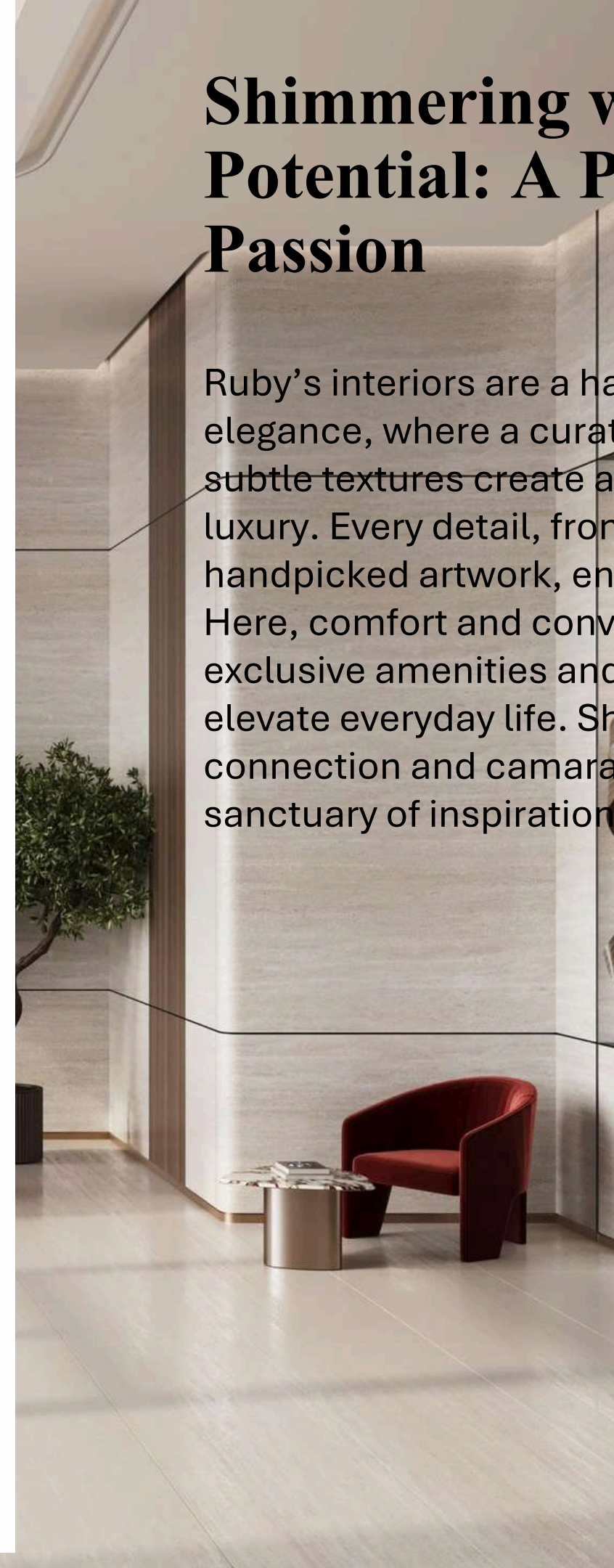
Just as a flawless ruby is cherished for its purity, **Ruby Residences** embody the same excellence with clean lines, open spaces, and a timeless, uncluttered design. Each residence stands as a testament to unwavering commitment to quality and craftsmanship, offering a sanctuary of refined elegance where your inner brilliance can truly shine.



Explore the design nuances that make **Ruby Residences** truly exceptional. Polished marble floors shimmer like moonlight on water, while sunlight dances across meticulously chosen surfaces, accentuating the delicate interplay of light and shadow. Every detail speaks of craftsmanship and a relentless pursuit of perfection.

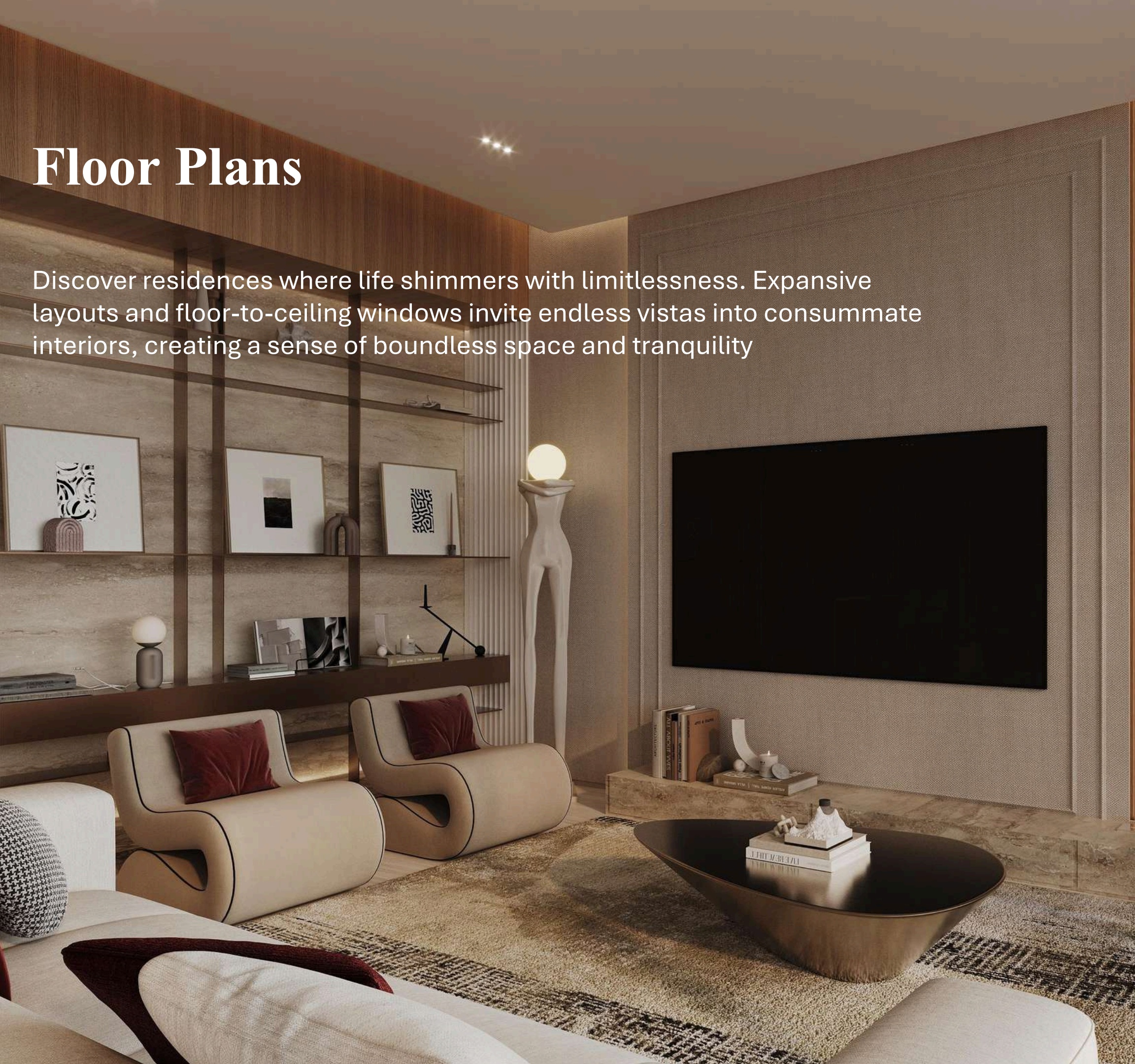
# Shimmering with Limitless Potential: A Palette of Passion

Ruby's interiors are a harmonious blend of refined elegance, where a curated palette of rich hues and subtle textures create an atmosphere of understated luxury. Every detail, from bespoke lighting to handpicked artwork, enhances the living experience. Here, comfort and convenience are unparalleled, with exclusive amenities and thoughtful services that elevate everyday life. Shared spaces foster connection and camaraderie, making **Ruby** a true sanctuary of inspiration and warmth.



# Floor Plans

Discover residences where life shimmers with limitlessness. Expansive layouts and floor-to-ceiling windows invite endless vistas into consummate interiors, creating a sense of boundless space and tranquility



ABOUT THE PROJECT

# The Path to Transcendence

BURJ  
AL ARAB

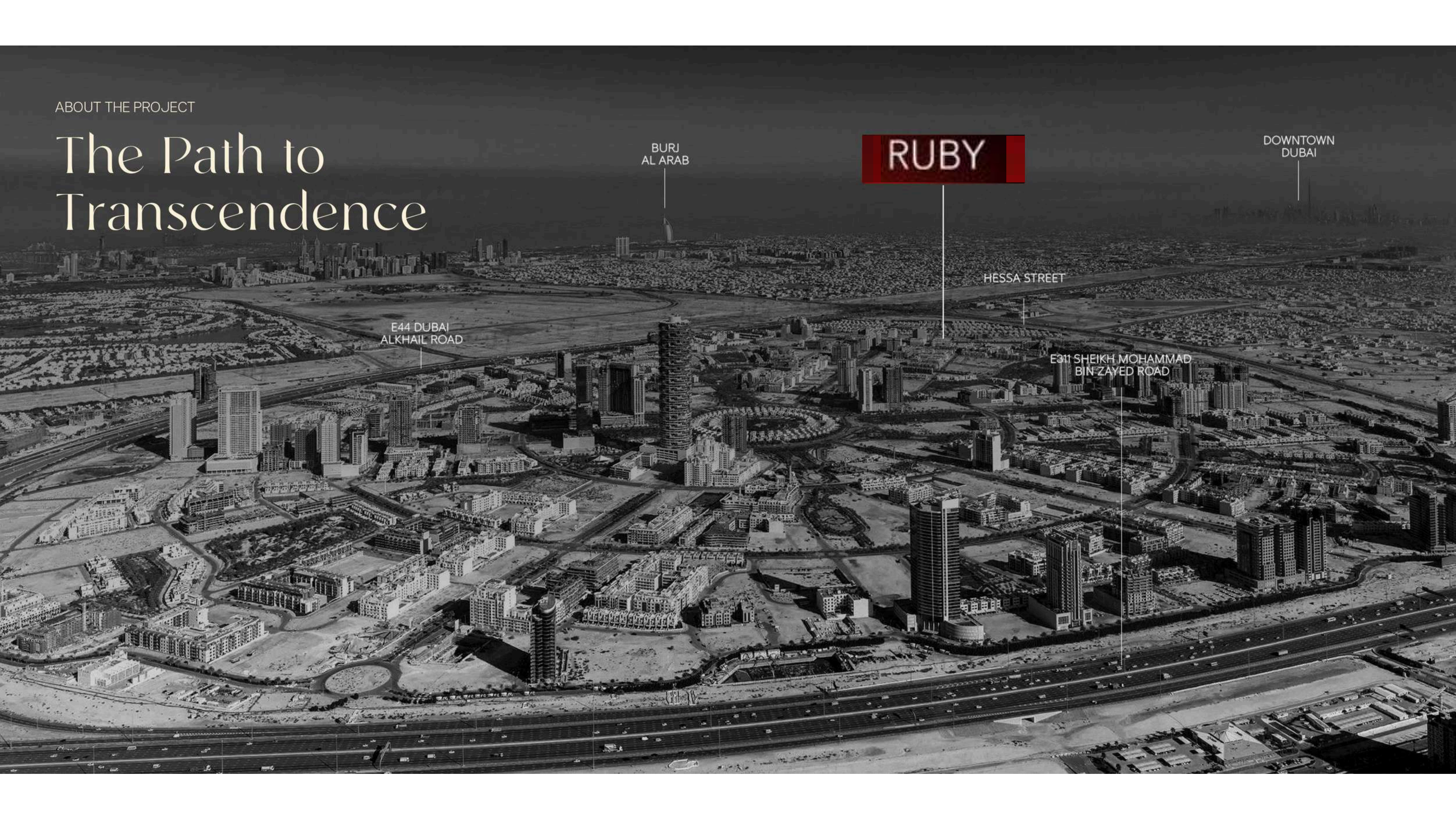
RUBY

DOWNTOWN  
DUBAI

E44 DUBAI  
ALKHAIL ROAD

HESSA STREET

E311 SHEIKH MOHAMMAD  
BIN ZAYED ROAD





## PROJECT FACTS

### PROPERTY TYPE

MIXED USED: RESIDENTIAL, RETAIL & COMMERCIAL

### PLOT AREA

4687.10 SQ.M / 50451.48 SQFT

### DESCRIPTION

B + G + 4P + 2 OFFICES + 18 RESIDENTIAL FLOORS + ROOF

### NUMBER OF UNITS

STUDIO APARTMENT :	319
1 BEDROOM APARTMENT :	185
2 BEDROOM APARTMENT :	66
3 BEDROOM APARTMENT :	02

### TOTAL UNITS

TOTAL RESIDENTIAL UNITS:	572
TOTAL OFFICES:	45
RETAIL SHOPS(GROUND FLOOR):	10

01

## About Ruby

Step inside, a hush descends. Clarity reigns. This is Ruby, an exclusive collection of 572 meticulously crafted residences, ranging from studios to expansive two-bedroom apartments, designed for those who seek timeless allure.

02

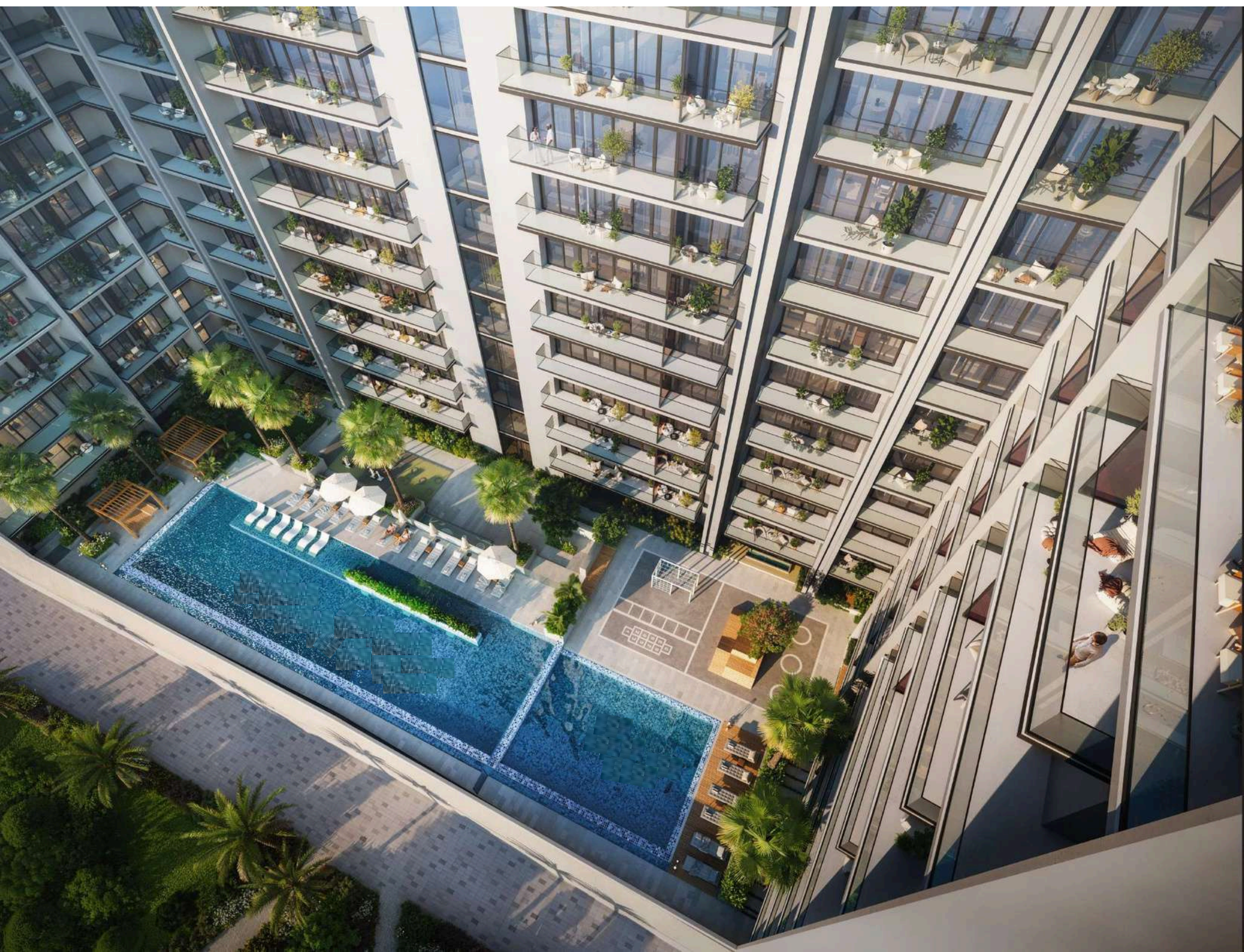
## Design Details

Every surface glints with untold richness.  
Sunlight streams, illuminating interiors crafted with a jeweller's precision.

03

## Floor Plans

Discover residences where life shimmers with limitlessness. Expansive layouts and floor-to-ceiling windows invite endless vistas into consummate interiors, creating a sense of boundless space and tranquility.



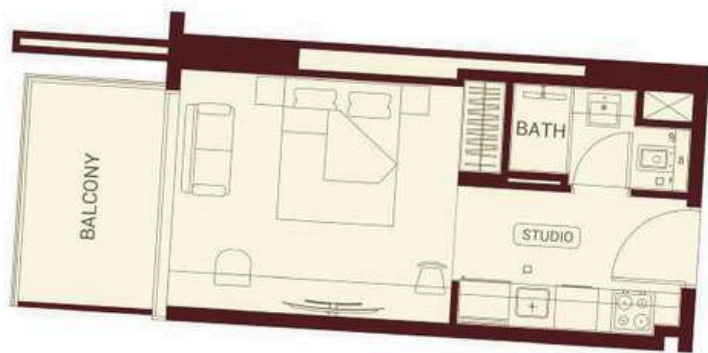
# Crowned in World-Class Amenities

Ruby offers a curated selection of amenities designed to enhance your every day. Immerse yourself in the shimmering waters of the adult pool, or enjoy a refreshing dip in the kids' pool. Unwind in the beautifully landscaped outdoor seating areas, or find your momentary repose in the dedicated yoga zone.

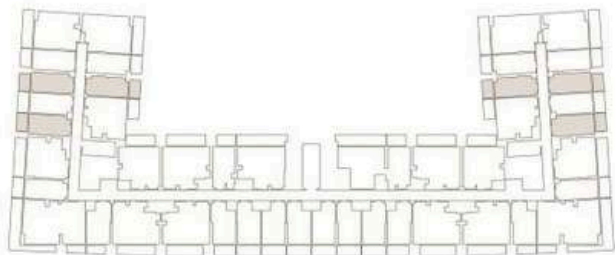
Stay active in the state-of-the-art fitness centre, or take a leisurely jog on the dedicated track and enjoy panoramic views of the city.



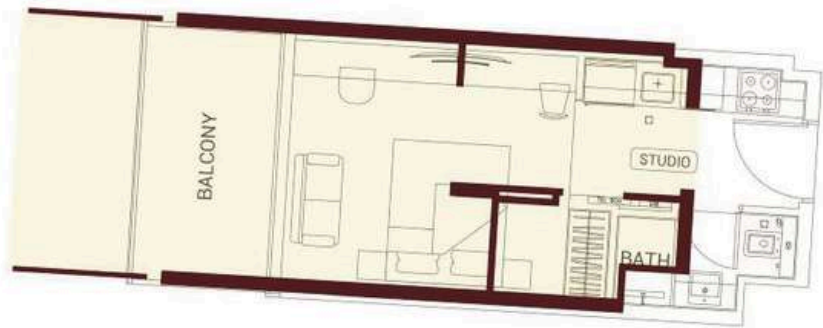
# STUDIO TYPE 01



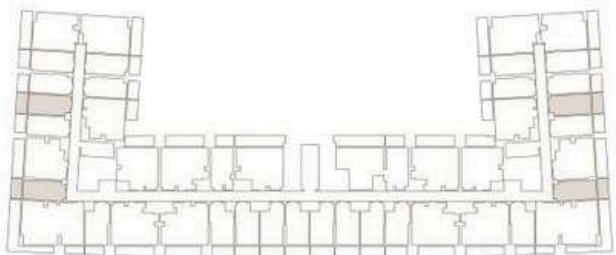
AREA	SQ.M	SQ.FT
SUITE AREA	27.35 m²	294.39 ft²
BALCONY AREA	6.72 m²	72.33 ft²
TOTAL UNIT AREA	34.07 m²	366.73 ft²
FLAT DESIGN COMPONENTS		
BATH	3 m²	
STUDIO	14 m²	
KITCHEN	6 m²	



# STUDIO TYPE 02



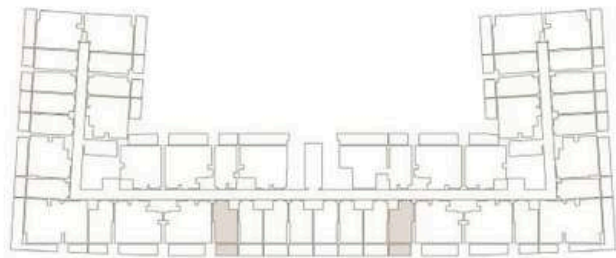
AREA	SQ.M	SQ.FT
SUITE AREA	26.66 m²	286.97 ft²
BALCONY AREA	7.53 m²	81.05 ft²
TOTAL UNIT AREA	34.19 m²	368.02 ft²
FLAT DESIGN COMPONENTS		
BATH	3 m²	
STUDIO	15 m²	
KITCHEN	6 m²	



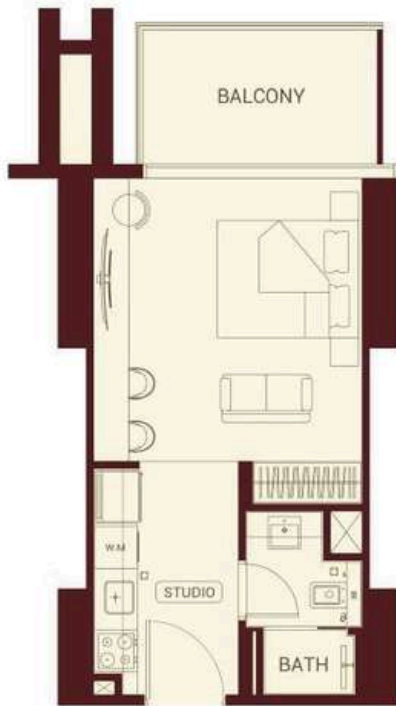
STUDIO TYPE 03



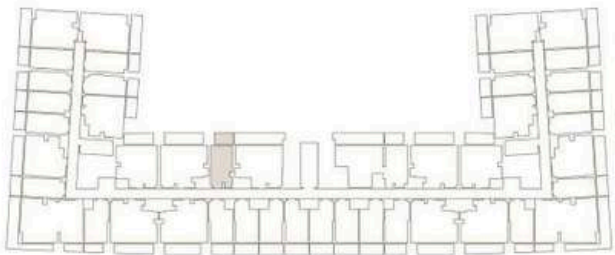
AREA	SQ.M	SQ.FT
SUITE AREA	30.06 m²	323.56 ft²
BALCONY AREA	8.02 m²	86.33 ft²
TOTAL UNIT AREA	38.08 m²	409.89 ft²
FLAT DESIGN COMPONENTS		
BATH	4 m²	
STUDIO	13 m²	
KITCHEN	8 m²	



STUDIO TYPE 04



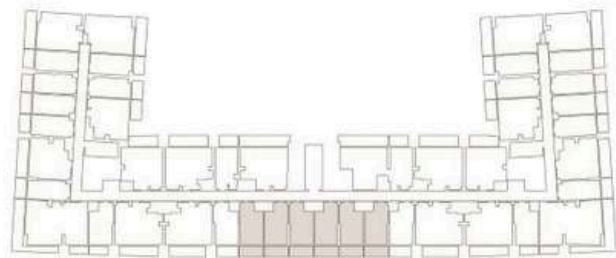
AREA	SQ.M	SQ.FT
SUITE AREA	31.10 m²	334.76 ft²
BALCONY AREA	7.04 m²	75.78 ft²
TOTAL UNIT AREA	38.14 m²	410.54 ft²
FLAT DESIGN COMPONENTS		
BATH	4 m²	
STUDIO	16 m²	
KITCHEN	7 m²	



# STUDIO TYPE 05



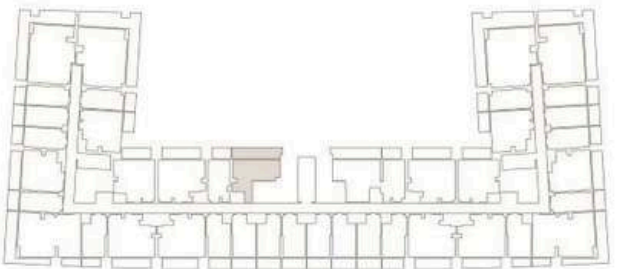
AREA	SQ.M	SQ.FT
SUITE AREA	29.54 m²	317.97 ft²
BALCONY AREA	8.87 m²	95.48 ft²
TOTAL UNIT AREA	38.41 m²	413.44 ft²
FLAT DESIGN COMPONENTS		
BATH	4 m²	
STUDIO	14 m²	
KITCHEN	8 m²	



# STUDIO TYPE 06

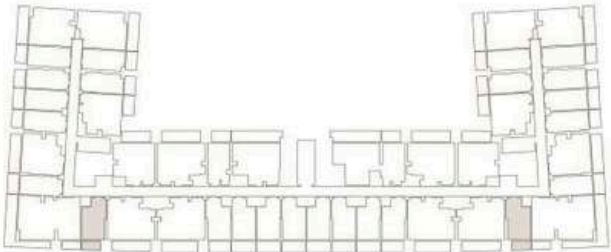


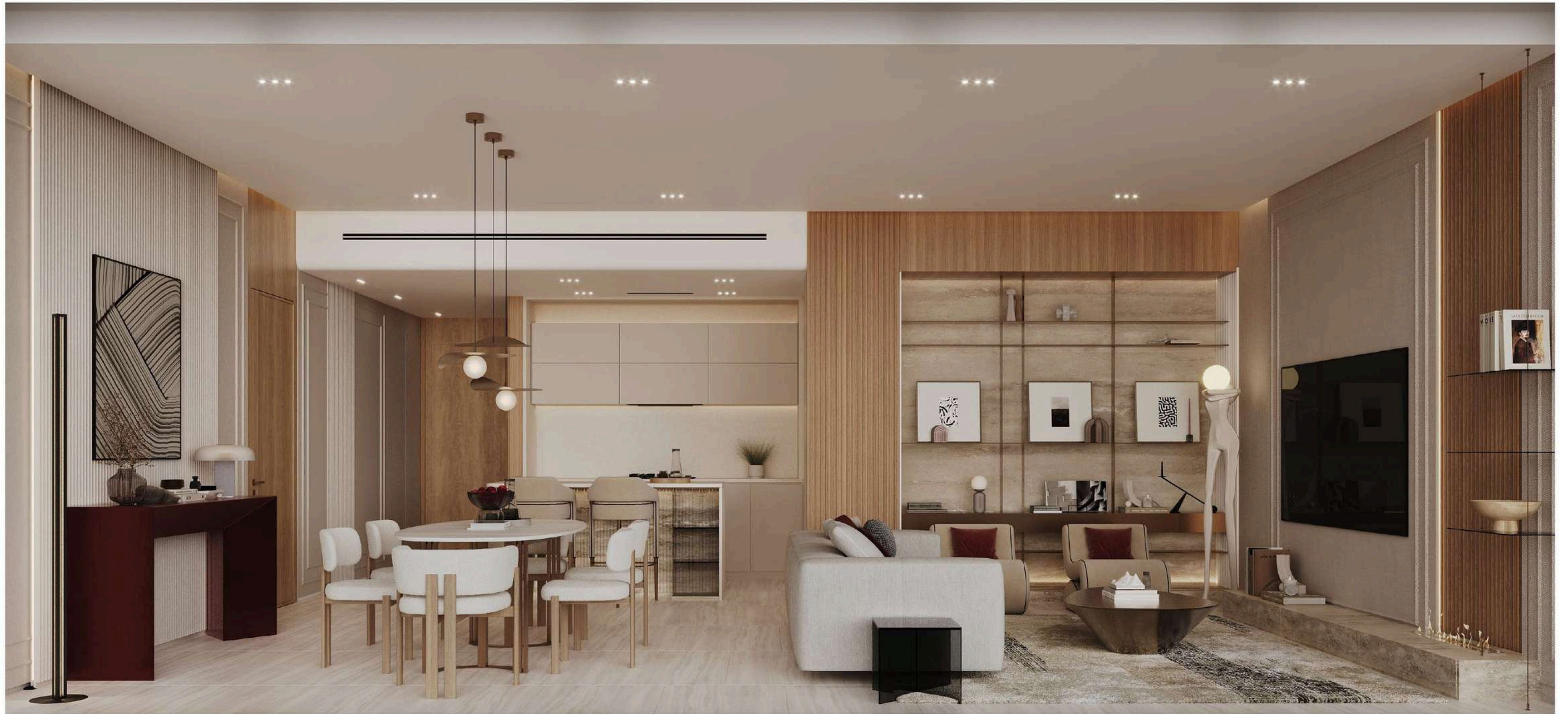
AREA	SQ.M	SQ.FT
SUITE AREA	43.03 m²	463.17 ft²
BALCONY AREA	17.50 m²	188.37 ft²
TOTAL UNIT AREA	60.53 m²	651.54 ft²
FLAT DESIGN COMPONENTS		
BATH	4 m²	
STUDIO	21 m²	
KITCHEN	7 m²	
CORRIDOR	5 m²	



# STUDIO TYPE 07

AREA	SQ.M	SQ.FT
SUITE AREA	30.02 m²	323.13 ft²
BALCONY AREA	5.64 m²	60.71 ft²
TOTAL UNIT AREA	35.66 m²	383.84 ft²
FLAT DESIGN COMPONENTS		
BATH	4 m²	
STUDIO	14 m²	
KITCHEN	8 m²	

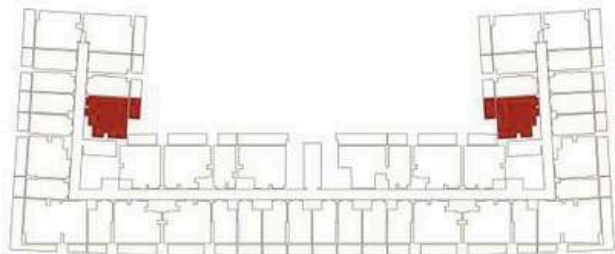




1BHK TYPE 01



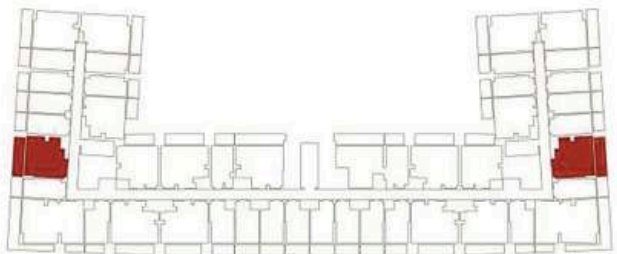
AREA	SQ.M	SQ.FT
SUITE AREA	50.35 m²	541.96 ft²
BALCONY AREA	7.54 m²	81.16 ft²
TOTAL UNIT AREA	57.89 m²	623.12 ft²
FLAT DESIGN COMPONENTS		
M.BATH	4 m²	
M.BEDROOM	14 m²	
LIVING & DINING	15 m²	
KITCHEN	6 m²	
CORRIDOR	4 m²	
WC	3 m²	



1BHK TYPE 01



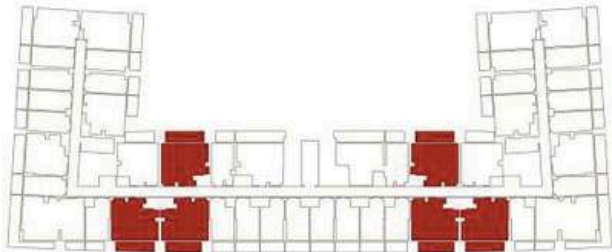
AREA	SQ.M	SQ.FT
SUITE AREA	50.05 m²	538.73 ft²
	14.08 m²	151.56 ft²
	64.13 m²	690.29 ft²
FLAT DESIGN COMPONENTS		
M.BATH	4 m²	
M.BEDROOM	14 m²	
LIVING & DINING	15 m²	
KITCHEN	6 m²	
CORRIDOR	4 m²	
WC	3 m²	



1BHK TYPE 03



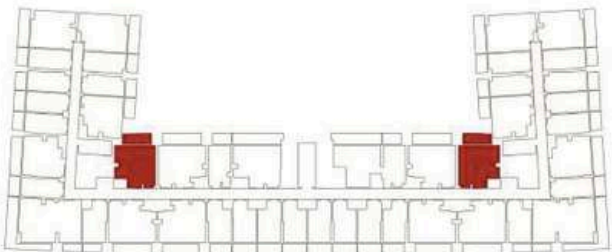
AREA	SQ.M	SQ.FT
SUITE AREA	58.80 m²	632.92 ft²
	14.05 m²	151.23 ft²
	72.85 m²	784.15 ft²
FLAT DESIGN COMPONENTS		
M.BATH	4 m²	
M.BEDROOM	16 m²	
LIVING & DINING	18 m²	
KITCHEN	7 m²	
CORRIDOR	5 m²	
WC	3 m²	



1BHK TYPE 04



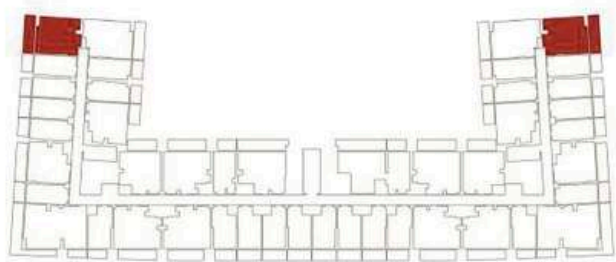
AREA	SQ.M	SQ.FT
SUITE AREA	52.46 m²	564.67 ft²
	10.52 m²	113.24 ft²
	62.98 m²	677.91 ft²
FLAT DESIGN COMPONENTS		
M.BATH	4 m²	
M.BEDROOM	13 m²	
LIVING & DINING	16 m²	
KITCHEN	7 m²	
CORRIDOR	4 m²	
WC	3 m²	



1BHK TYPE 05



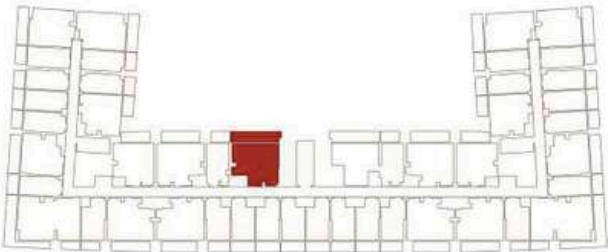
AREA	SQ.M	SQ.FT
SUITE AREA	51.56 m²	554.99 ft²
	13.64 m²	146.82 ft²
	65.20 m²	701.81 ft²
FLAT DESIGN COMPONENTS		
M.BATH	13 m²	
M.BEDROOM	14 m²	
LIVING & DINING	15 m²	
KITCHEN	8 m²	
CORRIDOR	7 m²	
WC	5 m²	



1BHK TYPE 06



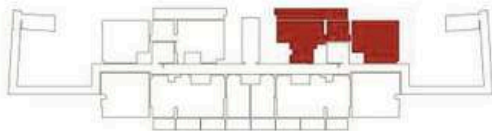
AREA	SQ.M	SQ.FT
SUITE AREA	58.80 m²	632.92 ft²
BALCONY AREA	14.05 m²	151.23 ft²
TOTAL UNIT AREA	72.85 m²	784.15 ft²
FLAT DESIGN COMPONENTS		
M.BATH	4 m²	
M.BEDROOM	14 m²	
LIVING & DINING	18 m²	
KITCHEN	8 m²	
CORRIDOR	6 m²	
WC	2 m²	



1BHK TYPE 07



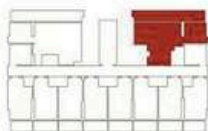
AREA	SQ.M	SQ.FT
SUITE AREA	67.44 m²	725.92 ft²
BALCONY AREA	85.08 m²	915.79 ft²
TOTAL UNIT AREA	152.52 m²	1641.71 ft²
FLAT DESIGN COMPONENTS		
M.BATH	4 m²	
M.BEDROOM	17 m²	
LIVING & DINING	22 m²	
KITCHEN	6 m²	
CORRIDOR	6 m²	
WC	3 m²	



1BHK TYPE 08



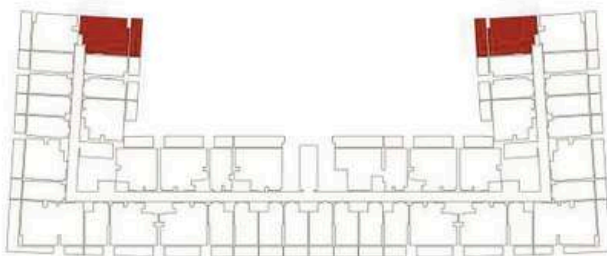
AREA	SQ.M	SQ.FT
SUITE AREA	67.18 m²	723.12 ft²
BALCONY AREA	25.85 m²	278.25 ft²
TOTAL UNIT AREA	93.03 m²	1001.37 ft²
FLAT DESIGN COMPONENTS		
M.BATH	4 m²	
M.BEDROOM	17 m²	
LIVING & DINING	22 m²	
KITCHEN	6 m²	
CORRIDOR	6 m²	
WC	3 m²	



1BHK TYPE 09



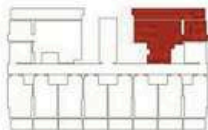
AREA	SQ.M	SQ.FT
SUITE AREA	55.30 m²	595.24 ft²
BALCONY AREA	13.64 m²	146.82 ft²
TOTAL UNIT AREA	68.94 m²	742.06 ft²
FLAT DESIGN COMPONENTS		
M.BATH	4 m²	
M.BEDROOM	13 m²	
LIVING & DINING	19 m²	
KITCHEN	9 m²	
CORRIDOR	2 m²	
WC	3 m²	
FOYER	4 m²	



2BHK TYPE 01



AREA	SQ.M	SQ.FT
SUITE AREA	67.18 m²	723.12 ft²
BALCONY AREA	25.85 m²	278.25 ft²
TOTAL UNIT AREA	93.03 m²	1001.37 ft²
FLAT DESIGN COMPONENTS		
M.BATH	4 m²	
M.BEDROOM	17 m²	
LIVING & DINING	22 m²	
KITCHEN	6 m²	
CORRIDOR	6 m²	
WC	3 m²	

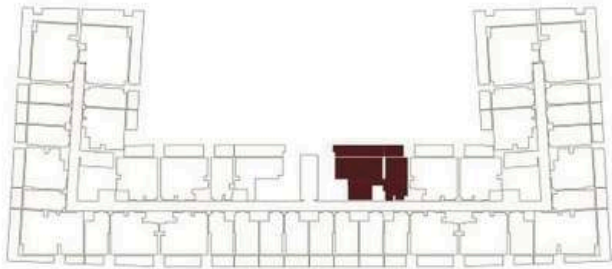




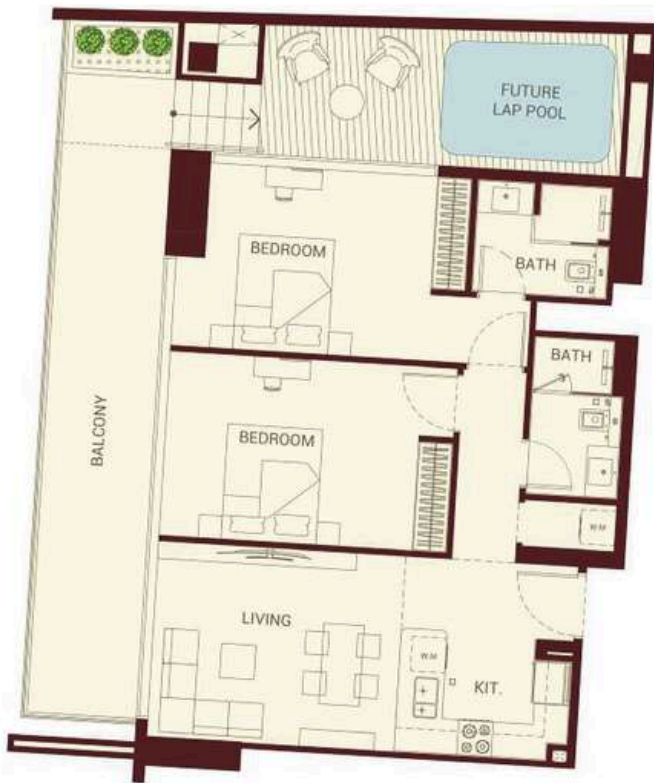
2BHK TYPE 02



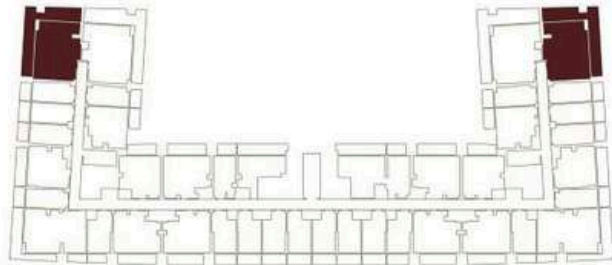
AREA	SQ.M	SQ.FT
SUITE AREA	82.68 m²	889.96 ft²
BALCONY AREA	25.17 m²	270.93 ft²
TOTAL UNIT AREA	107.85 m²	1160.89 ft²
FLAT DESIGN COMPONENTS		
M.BATH	5 m²	
M.BEDROOM	18 m²	
LIVING	14 m²	
KITCHEN & DINING	8 m²	
CORRIDOR	9 m²	
BATH	5 m²	
BEDROOM	15 m²	



2BHK TYPE 03



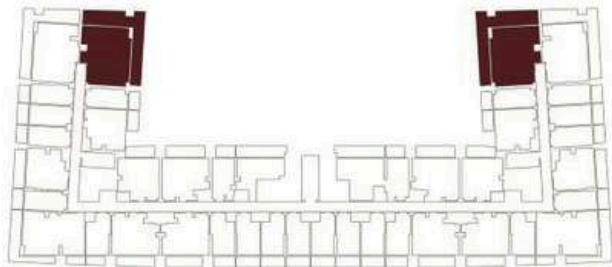
AREA	SQ.M	SQ.FT
SUITE AREA	80.02 m²	861.33 ft²
BALCONY AREA	43.49 m²	468.12 ft²
TOTAL UNIT AREA	123.59 m²	1329.45 ft²
FLAT DESIGN COMPONENTS		
M.BATH	5 m²	
M.BEDROOM	17 m²	
LIVING & DINING	15 m²	
KITCHEN	6 m²	
CORRIDOR	8 m²	
BATH	4 m²	
BEDROOM	16 m²	
LAUNDRY	1 m²	



2BHK TYPE 04



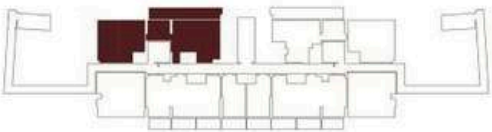
AREA	SQ.M	SQ.FT
SUITE AREA	85.61 m²	921.50 ft²
BALCONY AREA	50.09 m²	539.16 ft²
TOTAL UNIT AREA	135.70 m²	1460.66 ft²
FLAT DESIGN COMPONENTS		
M.BATH	7 m²	
M.BEDROOM	19 m²	
LIVING & DINING	14 m²	
KITCHEN	6 m²	
CORRIDOR	8 m²	
BATH	5 m²	
BEDROOM	16 m²	
LAUNDRY	1 m²	



2BHK TYPE 05



AREA	SQ.M	SQ.FT
SUITE AREA	75.49 m²	812.57 ft²
BALCONY AREA	85.30a m²	918.16 ft²
TOTAL UNIT AREA	107.85 m²	1730.73 ft²
FLAT DESIGN COMPONENTS		
M.BATH	4 m²	
M.BEDROOM	13 m²	
LIVING	14 m²	
KITCHEN	4 m²	
CORRIDOR	12 m²	
BATH	5 m²	
BEDROOM	14 m²	

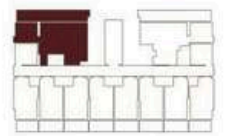


2BHK TYPE 06



AREA	SQ.M	SQ.FT
SUITE AREA	75.47 m²	812.35 ft²
BALCONY AREA	26.06 m²	280.51 ft²
TOTAL UNIT AREA	101.53 m²	1092.86 ft²

FLAT DESIGN COMPONENTS		
M.BATH	4 m²	
M.BEDROOM	13 m²	
LIVING	14 m²	
KITCHEN	4 m²	
CORRIDOR	12 m²	
BATH	5 m²	
BEDROOM	14 m²	

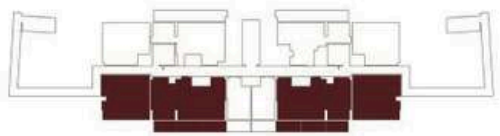


3BHK TYPE 01



AREA	SQ.M	SQ.FT
SUITE AREA	90.70 m²	976.29 ft²
BALCONY AREA	91.36 m²	983.39 ft²
TOTAL UNIT AREA	182.06 m²	1959.68 ft²

FLAT DESIGN COMPONENTS		
M.BATH	4 m²	
M.BEDROOM	12 m²	
LIVING & DINING	17 m²	
KITCHEN	5 m²	
CORRIDOR	9 m²	
BATH	6 m²	
BEDROOM	14 m²	
BEDROOM	13 m²	
FOYER	3 m²	
TOILET	2 m²	







**Where Prestige Meets Property**



At Majara Luxury Real Estate L.L.C., we redefine the art of luxury living. Based in the heart of the UAE, we specialize in curating exceptional real estate experiences tailored to the needs of discerning investors, end-users, and global clientele.



With a refined portfolio of premium properties across all seven Emirates, our expertise lies in both off-plan and ready-to-move assets, offering opportunities that blend architectural excellence with investment potential.



We are more than just property consultants & we are partners in your journey to finding the perfect home, investment, or lifestyle. Driven by integrity, market insight, and personalized service, Majara stands as a trusted name in an ever-evolving market.

## **Contact Us :**

**Phone: +971564452803**

**Email: [info@majararealestate.com](mailto:info@majararealestate.com)**

**<https://majararealestate.com/>**