

AL FURJAN

RAFFI



MAJARA LUXURY REAL ESTATE LLC

Head Office Level 36-01, Po Box :124382 , Trade Center 1, Sheikh Zayed Road , Burj Al Salam Tower Dubai UAE



Neila Residence at Al Furjan, Dubai | Exclusively Presented by Majara

RAFFI RESIDENCES



1 IBN BATTUTA MALL
5 minutes
ابن بطوطة مول
5 دقائق

2 EXPO CITY DUBAI
12 minutes
مدينة إكسبو دبي
12 دقيقة

3 JAFZA
7 minutes
جافزا
7 دقائق

4 THE PALM JUMEIRAH
15 minutes
نخلة جميرا
15 دقيقة

5 FESTIVAL CITY / IKEA
10 minutes
فستيفال سيتي / إيكيا
10 دقائق

6 MADINAT JUMERIAH
16 minutes
مدينة جميرا
16 دقيقة

7 DUBAI MARINA / JBR
10 minutes
دبي مارينا / جي بي آر
10 دقائق

8 THE METRO STATION
1 minute
محطة المترو
1 دقيقة

9 AL MAKTOUM
INTERNATIONAL AIRPORT
15 minutes
مطار آل مكتوم الدولي
15 دقيقة

10 SZR / MOHAMMED BIN
ZAYED ROAD
1 minute
شارع الشيخ زايد / محمد بن زايد
1 دقيقة





Al Furjan is one of Dubai's most sought-after residential districts, defined by its close proximity to the city's most renowned leisure and retail destinations.



Embrace the Energy of a Flourishing Locale



Surround Yourself with Verdant Landscapes and Exceptional Amenities



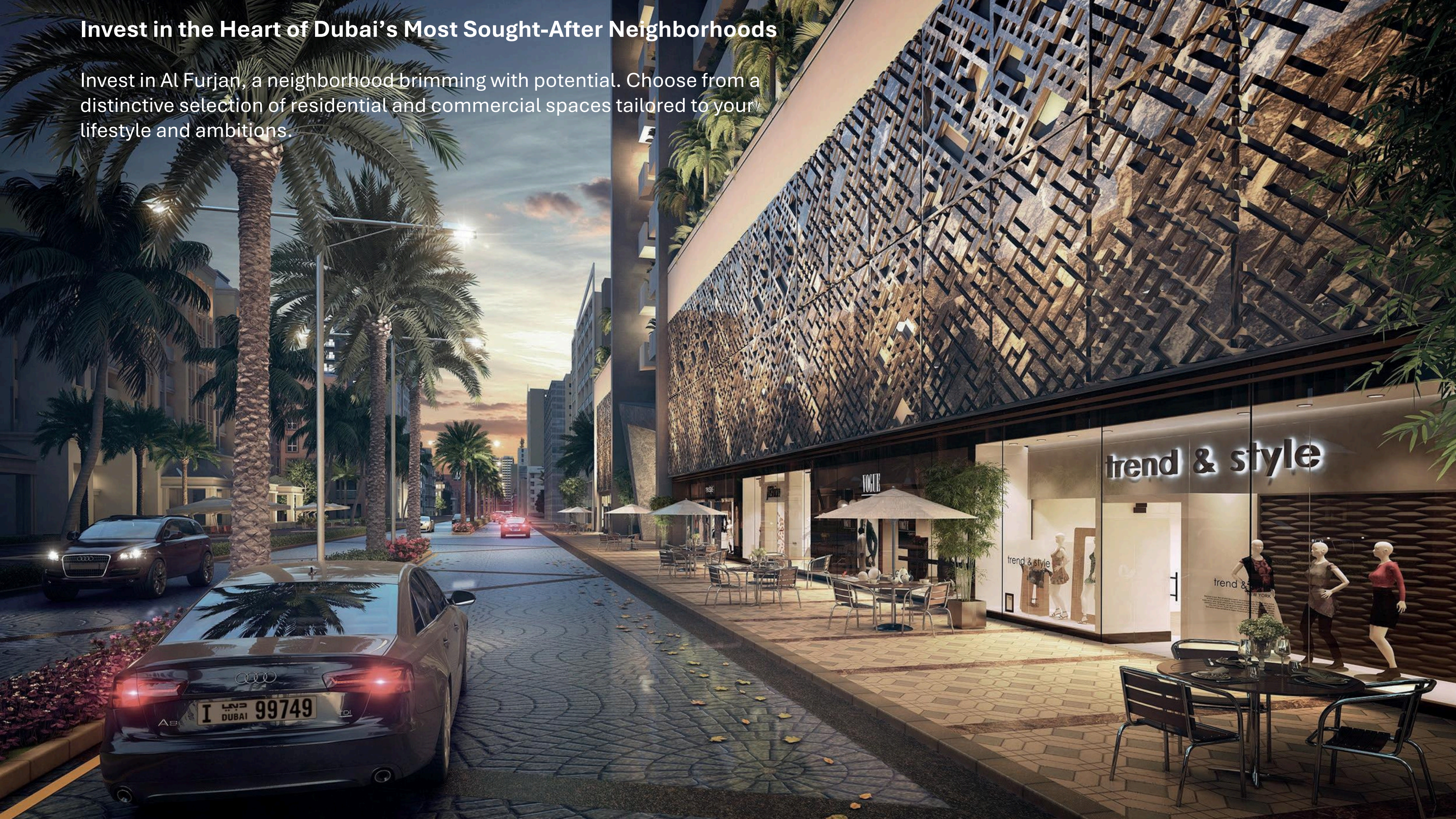
AL FURJAN COMMUNITY

With new developments continually emerging, Al Furjan is shaping up as a next-generation urban community where growth is the standard. This thriving neighborhood comes alive through an exceptional range of residences, including our latest project, Raffi, offering a curated selection of studios, one-, two-, and three-bedroom apartments complemented by world-class amenities.



Invest in the Heart of Dubai's Most Sought-After Neighborhoods

Invest in Al Furjan, a neighborhood brimming with potential. Choose from a distinctive selection of residential and commercial spaces tailored to your lifestyle and ambitions.



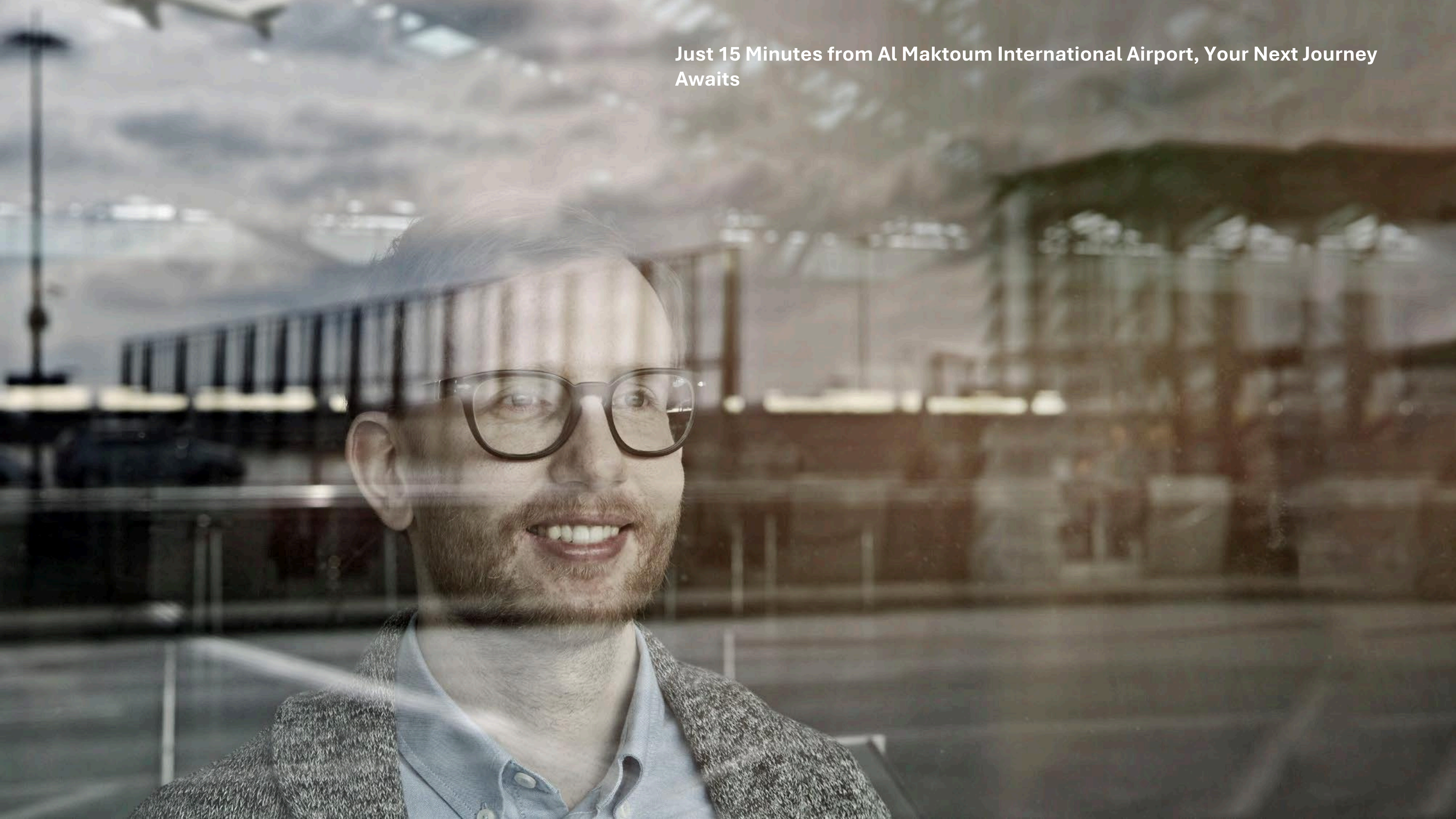
Enjoy the Energy of the City Without Leaving Your Sanctuary



Enjoy proximity to family entertainment and leading retail destinations such as The Pavilion, Ibn Battuta Mall, Festival City, and Dubai Marina Mall.



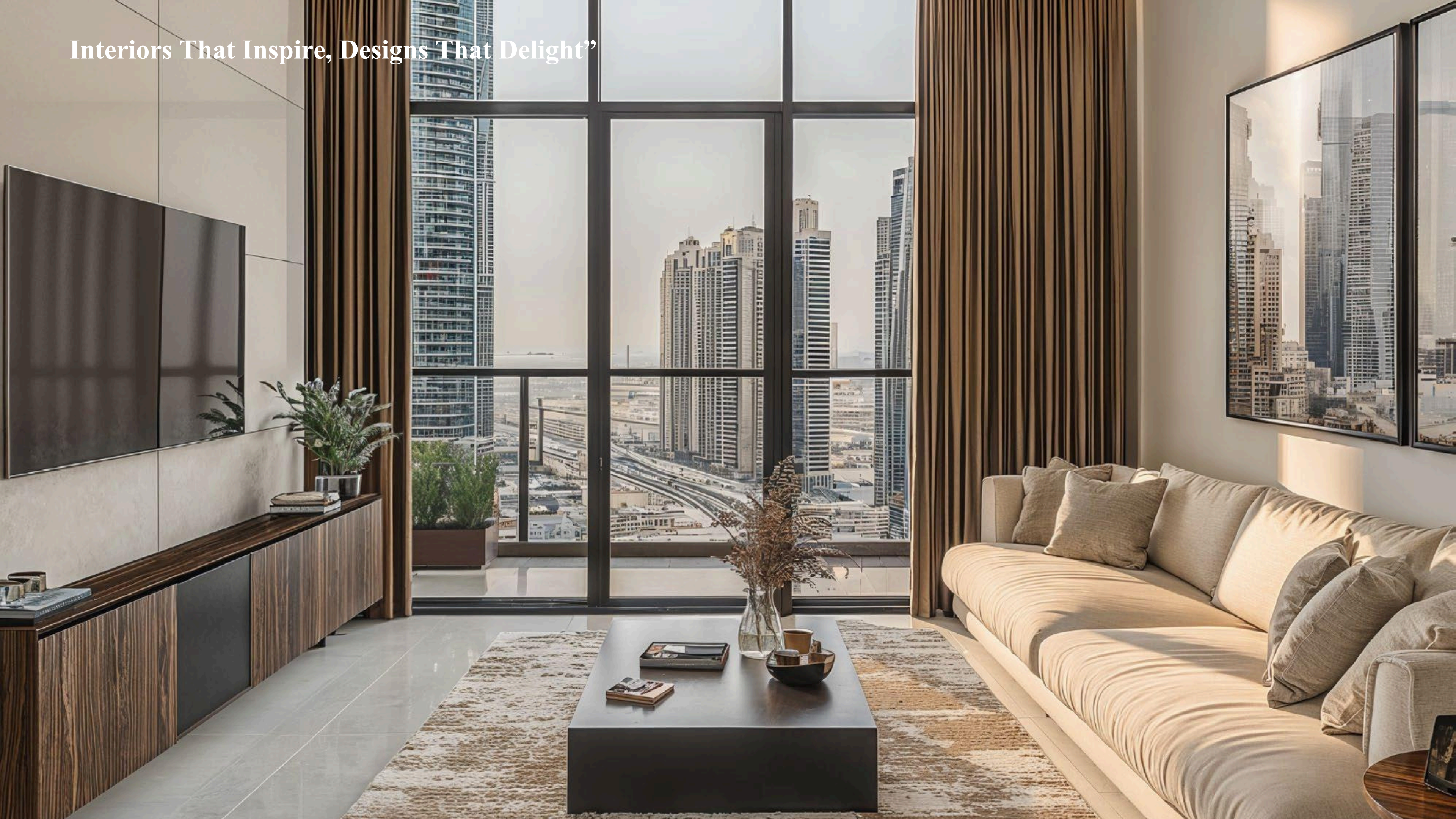
Just 15 Minutes from Al Maktoum International Airport, Your Next Journey Awaits



Raffi offers effortless access to Dubai's key destinations, featuring contemporary studio, 1, 2 and 3-bedroom apartments, along with other well-planned spaces to recharge and unwind after a busy day



Interiors That Inspire, Designs That Delight”



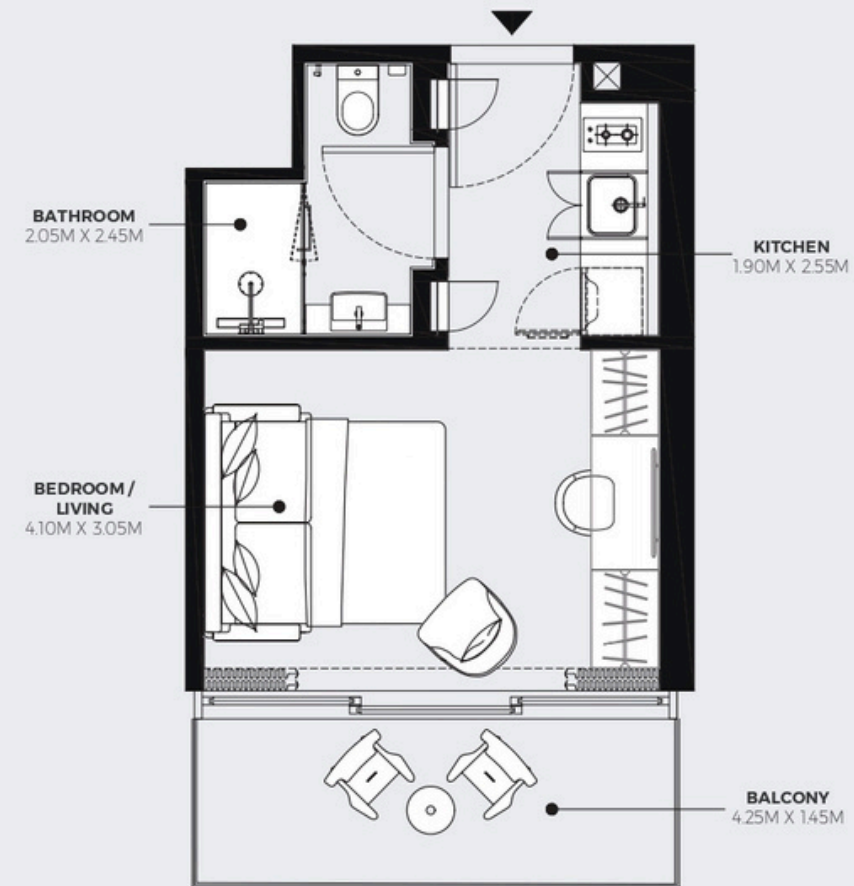
Enjoy Seamless, Unmatched Accessibility



FLOOR PLAN

STUDIO TYPE 1

2nd to 8th Floor



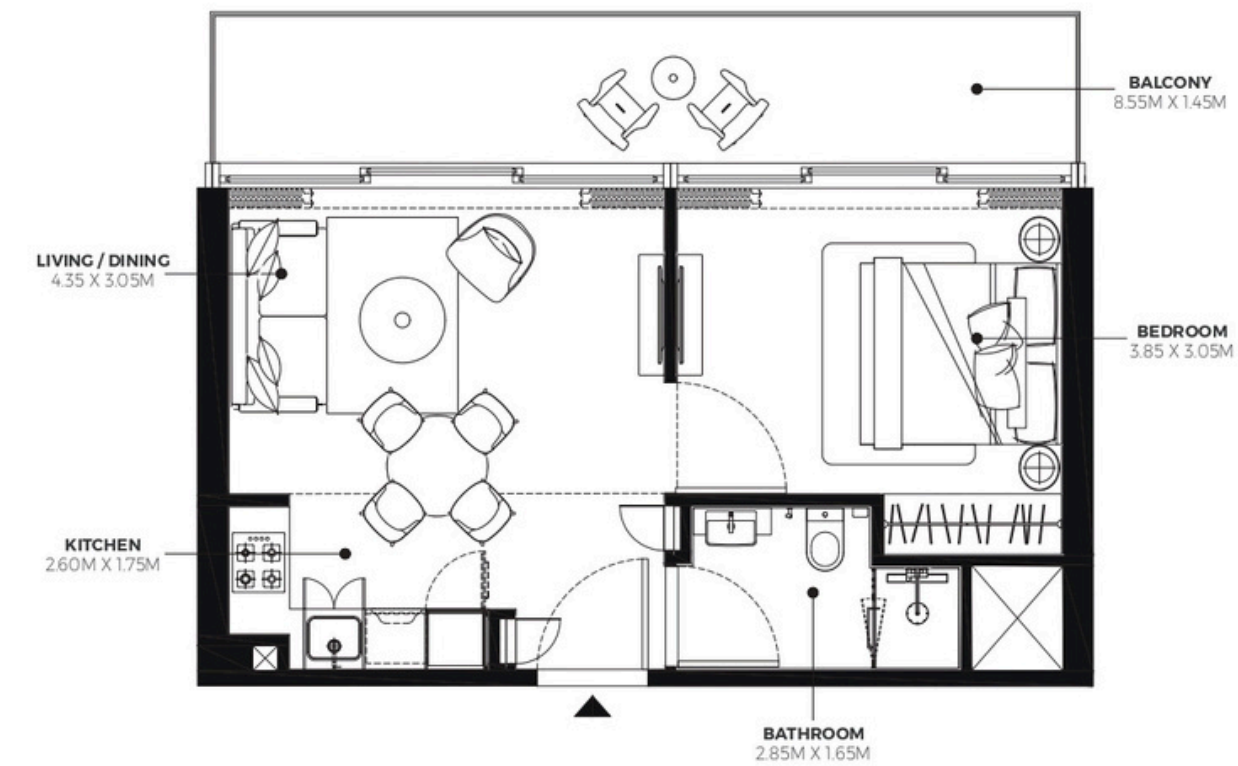
SUITE AREA : 254.78 SQ. FT.
TOTAL AREA : 328.95 SQ. FT.

TYPICAL UNITS

FLOOR PLAN

1 BEDROOM TYPE 1

2nd to 8th Floor



SUITE AREA : 446.38 SQ. FT.
TOTAL AREA : 594.60 SQ. FT.

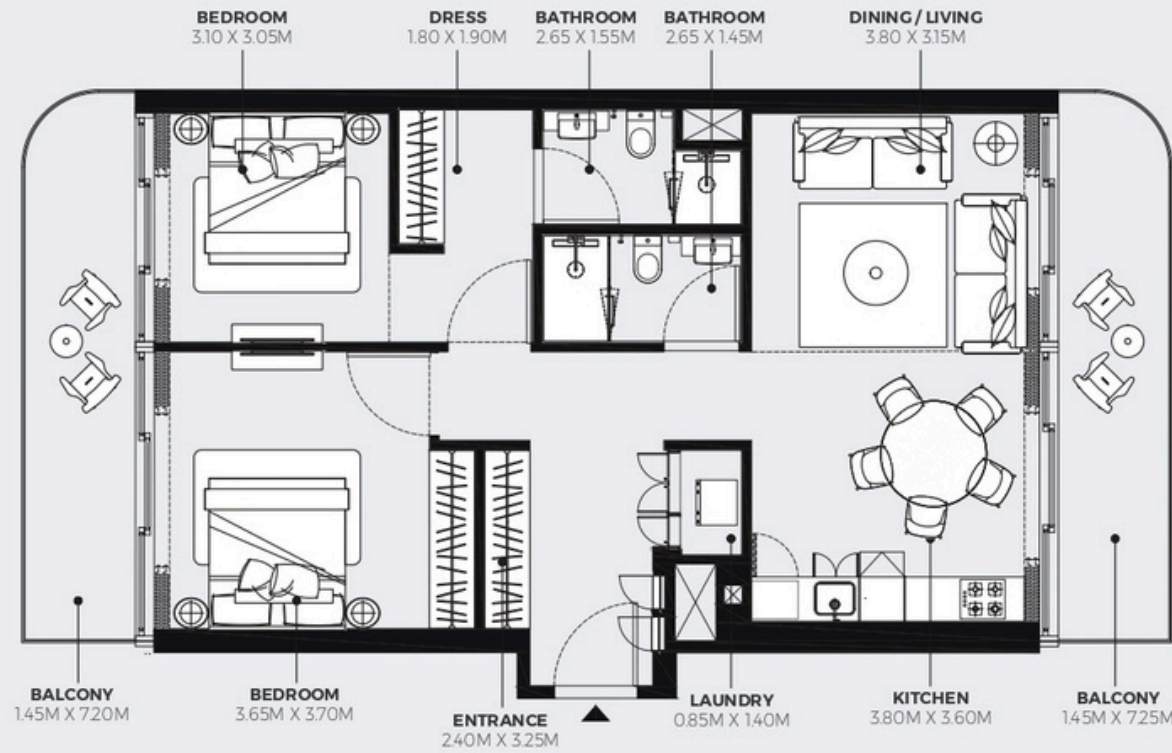
TYPICAL UNITS



FLOOR PLAN

2 BEDROOM TYPE 1

2nd to 8th Floor



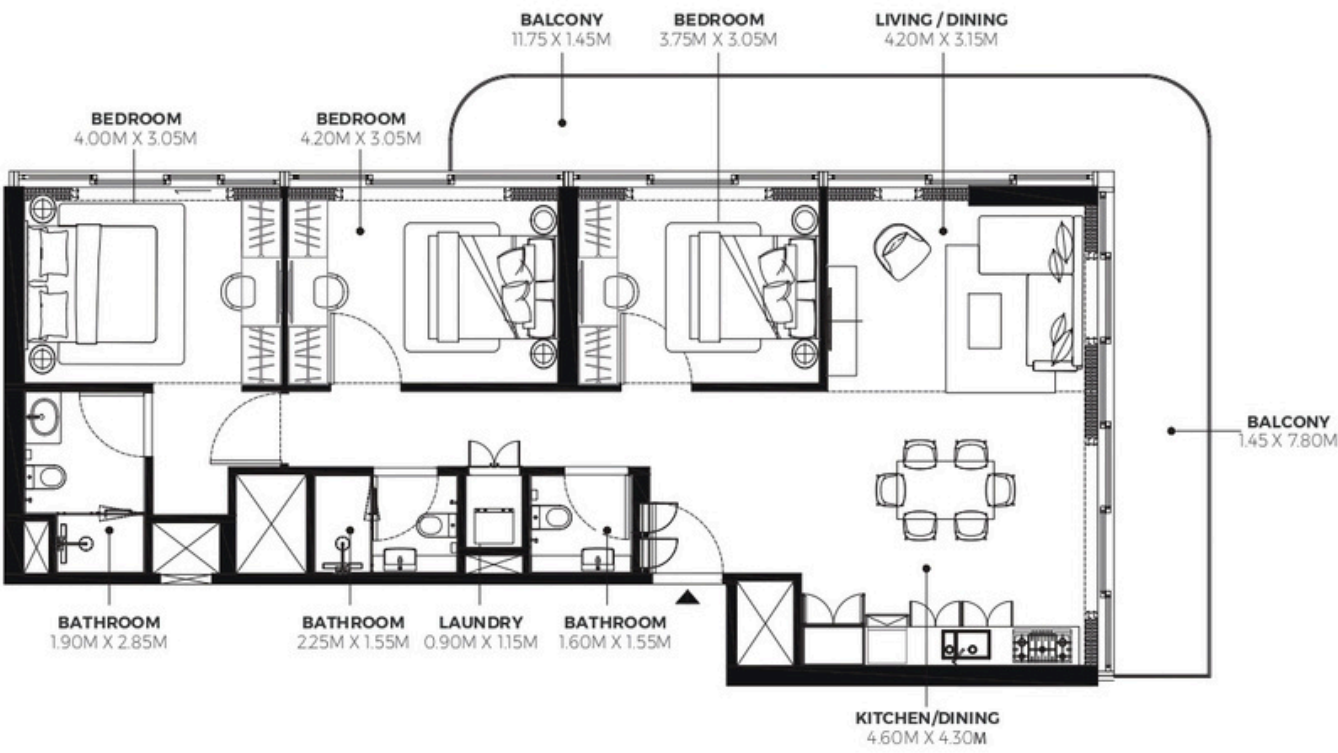
SUITE AREA : 914.83 SQ.FT.
TOTAL AREA : 1160.47 SQ.FT.

TYPICAL UNITS

FLOOR PLAN

3 BEDROOM TYPE 1

2nd to 8th Floor



SUITE AREA : 1162.40 SQ.FT.
TOTAL AREA : 1493.83 SQ.FT.

TYPICAL UNITS



AL FURJAN COMMUNITY

مجتمع الفرجان





Where Prestige Meets Property



At Majara Luxury Real Estate L.L.C., we redefine the art of luxury living. Based in the heart of the UAE, we specialize in curating exceptional real estate experiences tailored to the needs of discerning investors, end-users, and global clientele.



With a refined portfolio of premium properties across all seven Emirates, our expertise lies in both off-plan and ready-to-move assets, offering opportunities that blend architectural excellence with investment potential.



We are more than just property consultants & we are partners in your journey to finding the perfect home, investment, or lifestyle. Driven by integrity, market insight, and personalized service, Majara stands as a trusted name in an ever-evolving market.

Contact Us :

Phone: +971564452803

Email: info@majararealestate.com

<https://majararealestate.com/>