



PALAZZO TISSOLI

MAJARA LUXURY REAL ESTATE LLC

Head Office Level 36-01, Po Box :124382 , Trade Center 1, Sheikh Zayed Road , Burj Al Salam Tower Dubai UAE

Majara Presents Palazzo Tissoli | A Masterpiece of Luxury on Al Marjan Island

Life doesn't stand still.
It shifts,
advances transforms.



At Palazzo Tissoli, that rhythm becomes both form and feeling—beautifully shaped by Italian mastery.

A compass for life, it draws every direction into one center, where momentum transforms into the true essence of living.



Minutes Away from Leisure and Travel Hubs

05 MIN

Wynn Resort

15 MIN

Al Hamra Golf Course

45 MIN

RAK International Airport

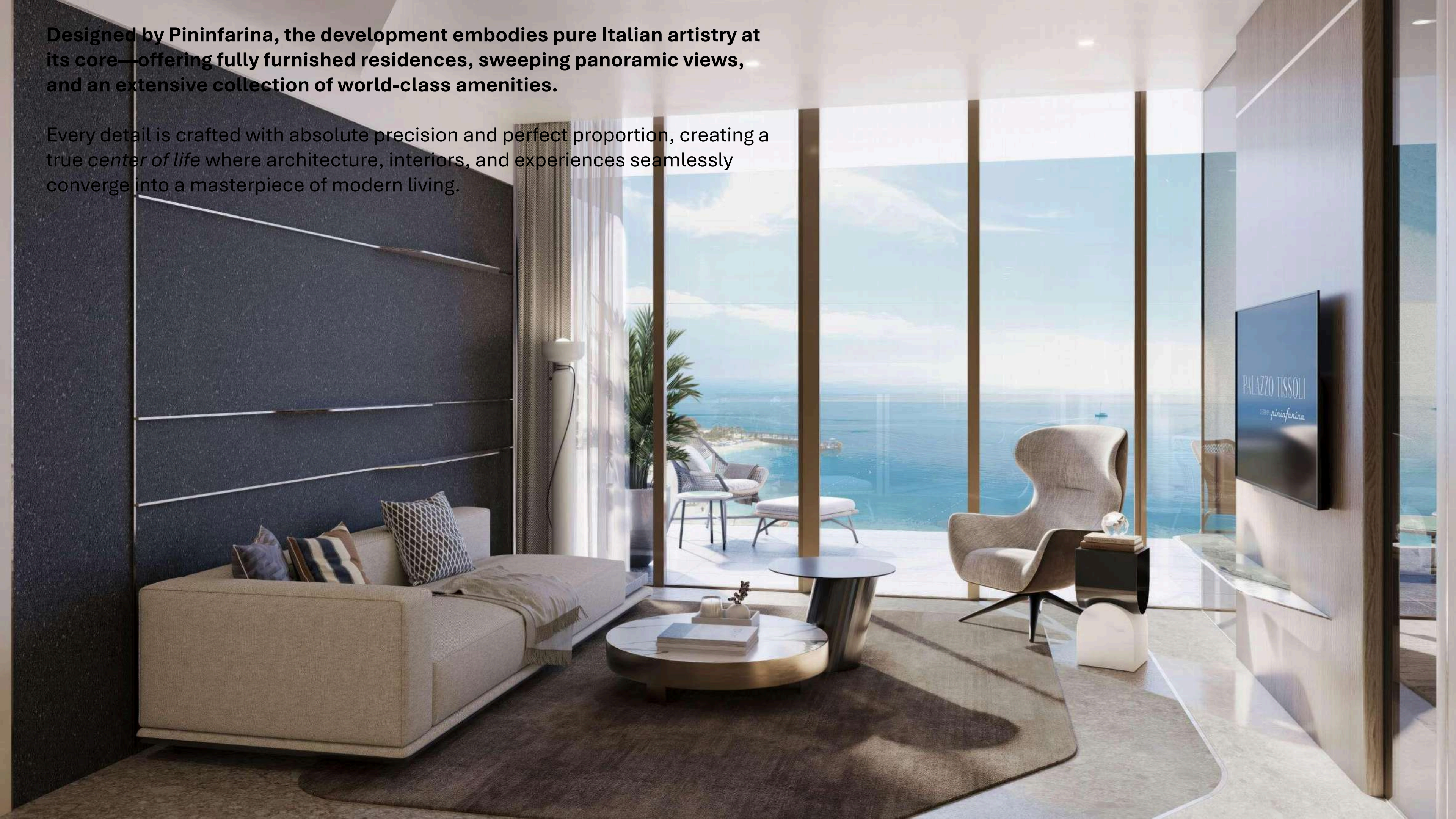
60 MIN

DXB International Airport



Designed by Pininfarina, the development embodies pure Italian artistry at its core—offering fully furnished residences, sweeping panoramic views, and an extensive collection of world-class amenities.

Every detail is crafted with absolute precision and perfect proportion, creating a true *center of life* where architecture, interiors, and experiences seamlessly converge into a masterpiece of modern living.



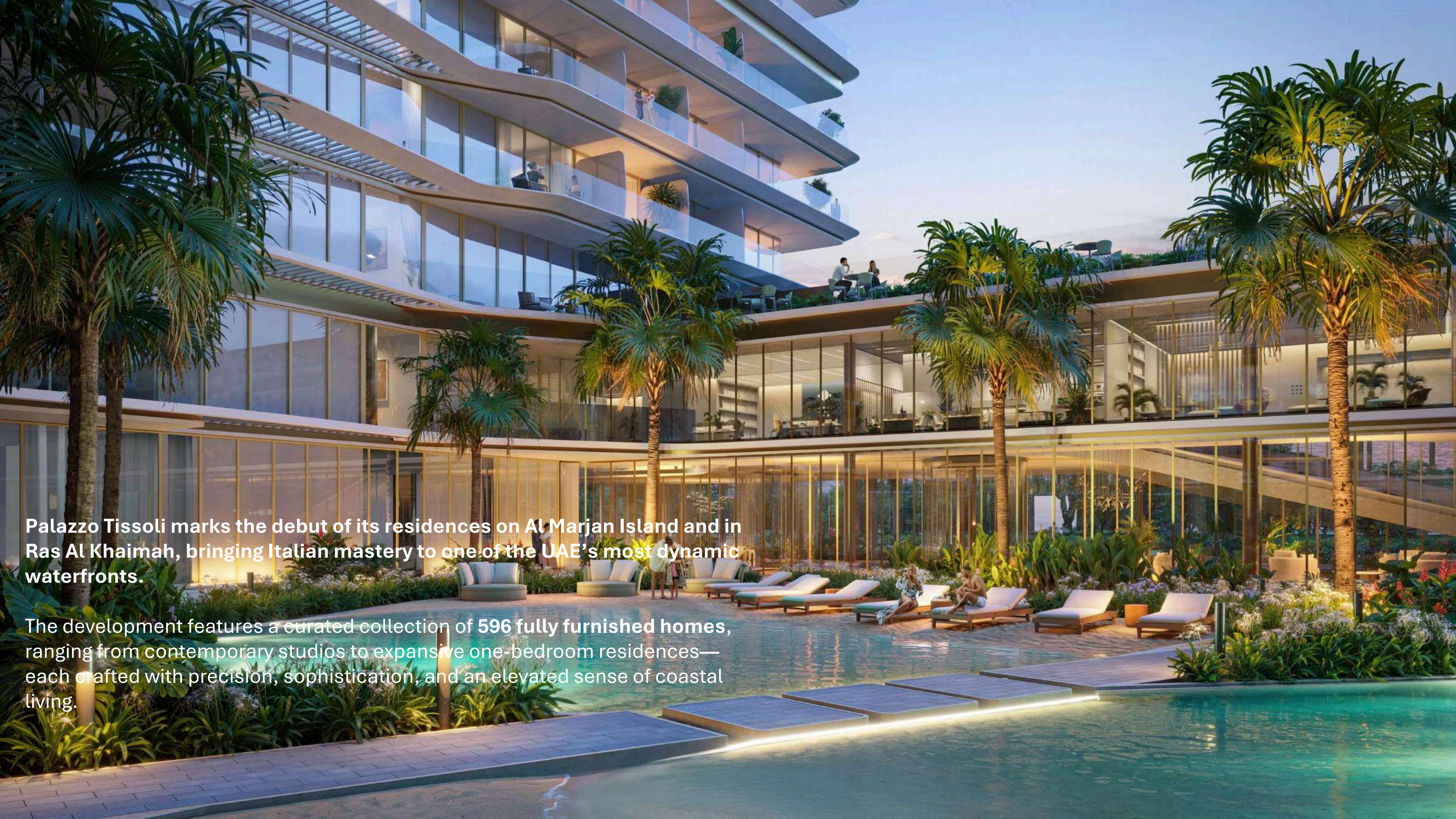


An Architectural Masterpiece on Al Marjan Island

Palazzo Tissoli rises as an ode to Ras Al Khaimah—drawing inspiration from the serene harmony where desert dunes meet lush mangroves, and the Hajar Mountains outline the horizon.

Its flowing terraces, sculpted glass façades, and layered landscapes echo the region’s natural beauty, creating a seamless dialogue between nature and refined elegance.

The result is a landmark shaped by cultural authenticity and contemporary vision—an architectural expression of Ras Al Khaimah’s timeless spirit.



Palazzo Tissoli marks the debut of its residences on Al Marjan Island and in Ras Al Khaimah, bringing Italian mastery to one of the UAE's most dynamic waterfronts.

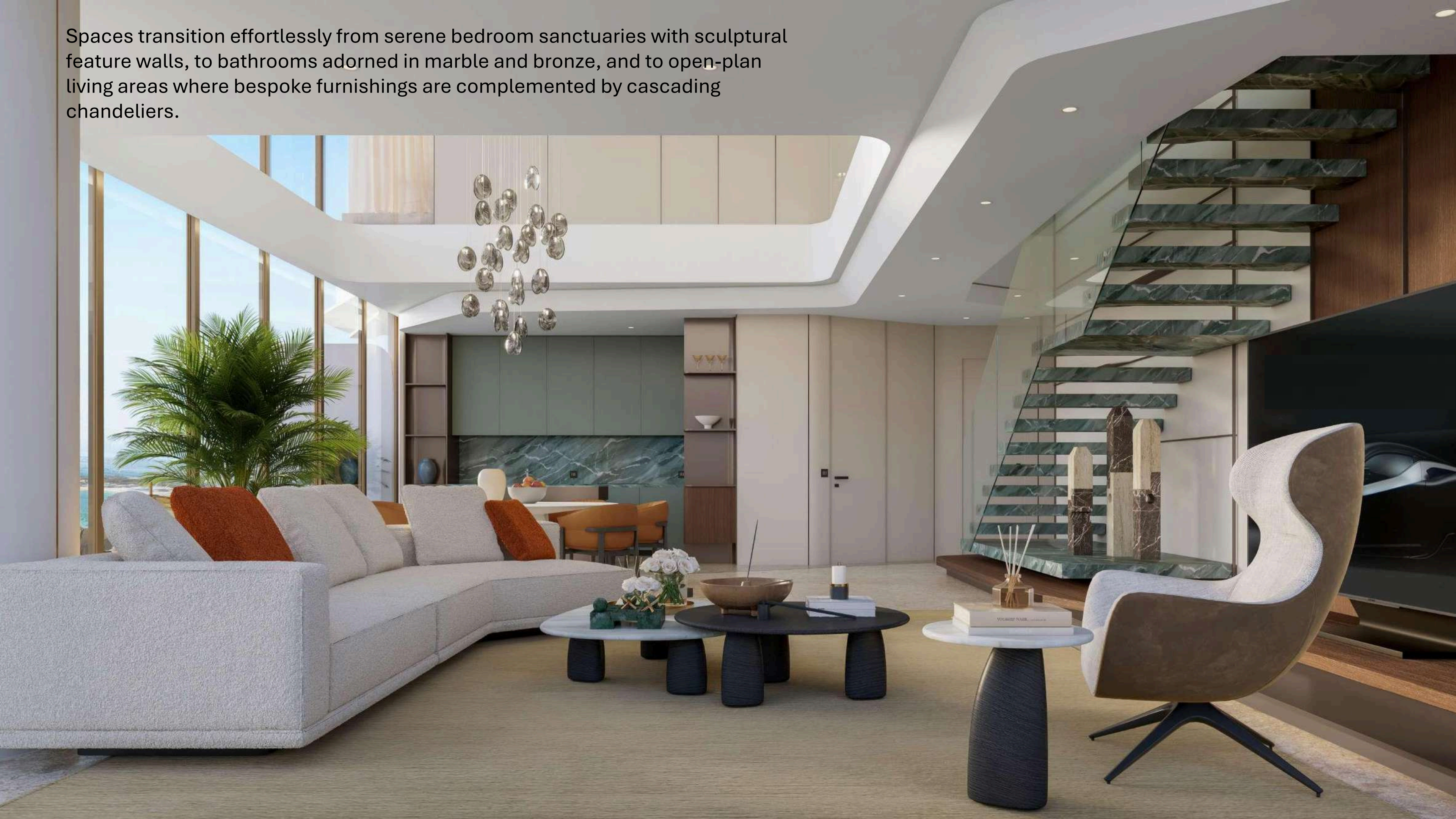
The development features a curated collection of 596 fully furnished homes, ranging from contemporary studios to expansive one-bedroom residences—each crafted with precision, sophistication, and an elevated sense of coastal living.



**Luxury Living
Inspired by
Italian Craftsmanship**

Each residence at Palazzo Tissoli features refined finishes in stone, wood, and glass, creating a timeless and elegant palette. Floor-to-ceiling glazing blurs the line between interior and exterior, seamlessly framing views of the Arabian Gulf and Wynn Resort—integral elements of an elevated coastal living experience.

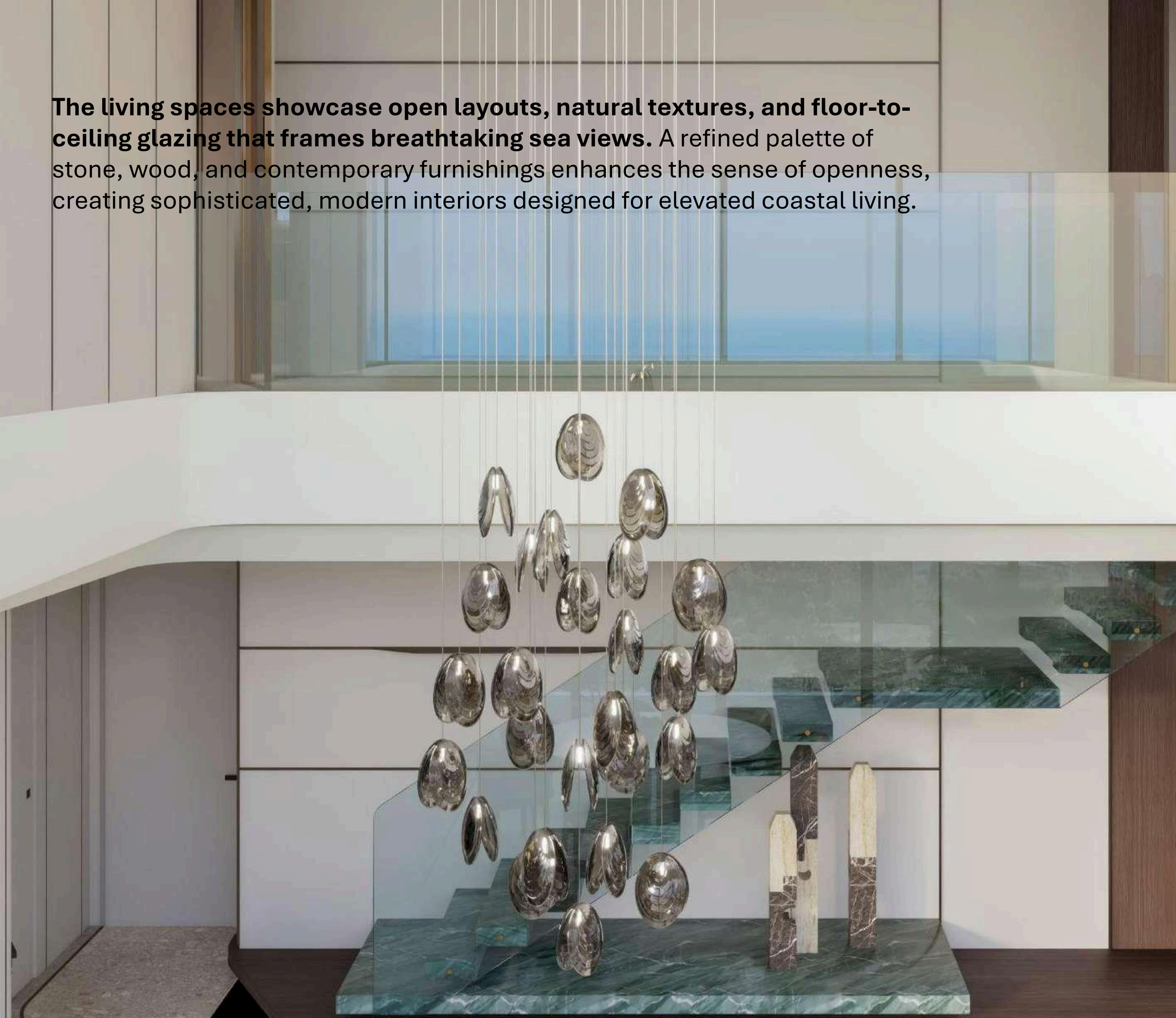
Spaces transition effortlessly from serene bedroom sanctuaries with sculptural feature walls, to bathrooms adorned in marble and bronze, and to open-plan living areas where bespoke furnishings are complemented by cascading chandeliers.




Light, proportion, and tactile details are carefully orchestrated to create residences that evolve throughout the day, transforming everyday living into an experience that approaches art.



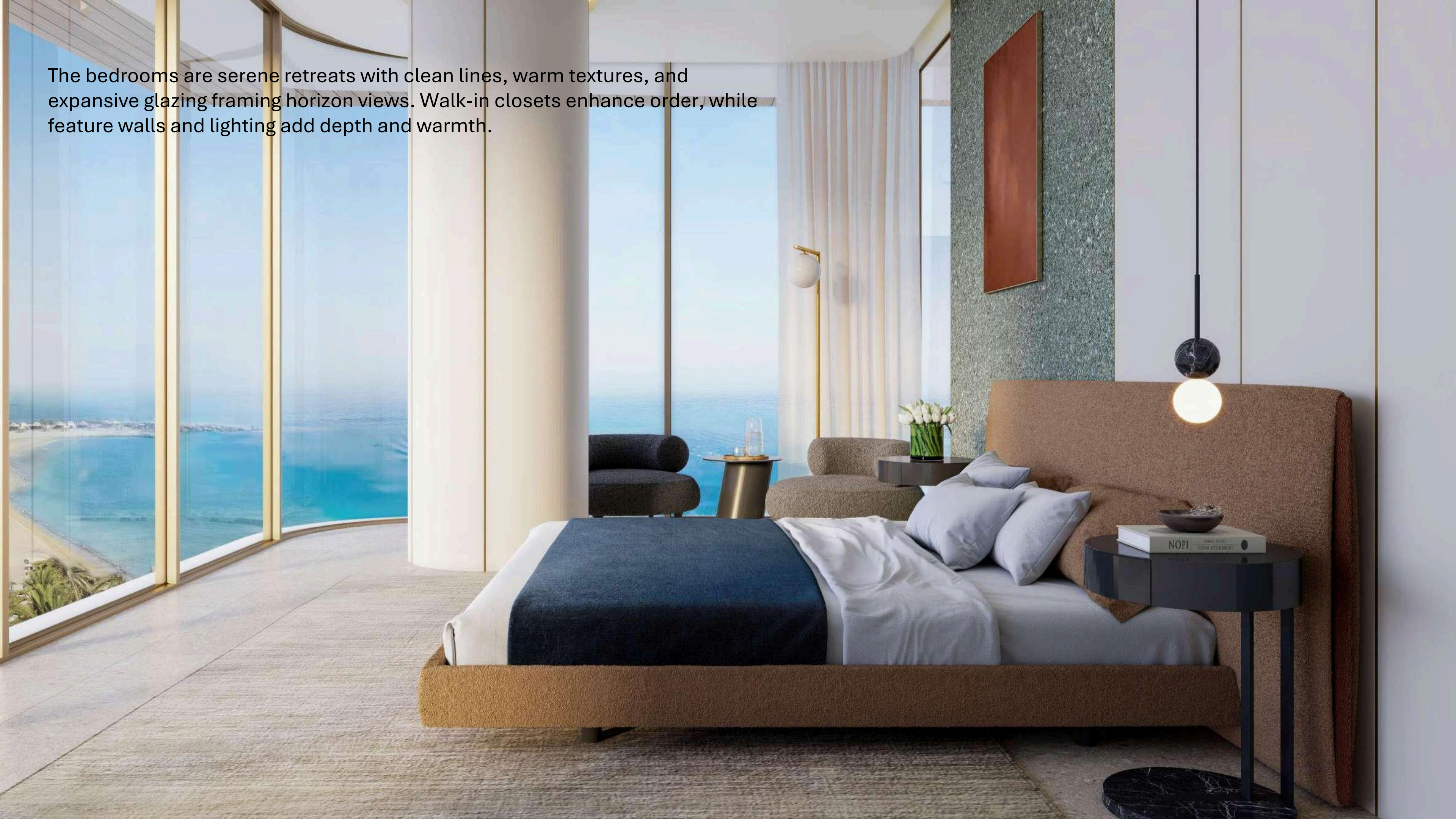
The living spaces showcase open layouts, natural textures, and floor-to-ceiling glazing that frames breathtaking sea views. A refined palette of stone, wood, and contemporary furnishings enhances the sense of openness, creating sophisticated, modern interiors designed for elevated coastal living.

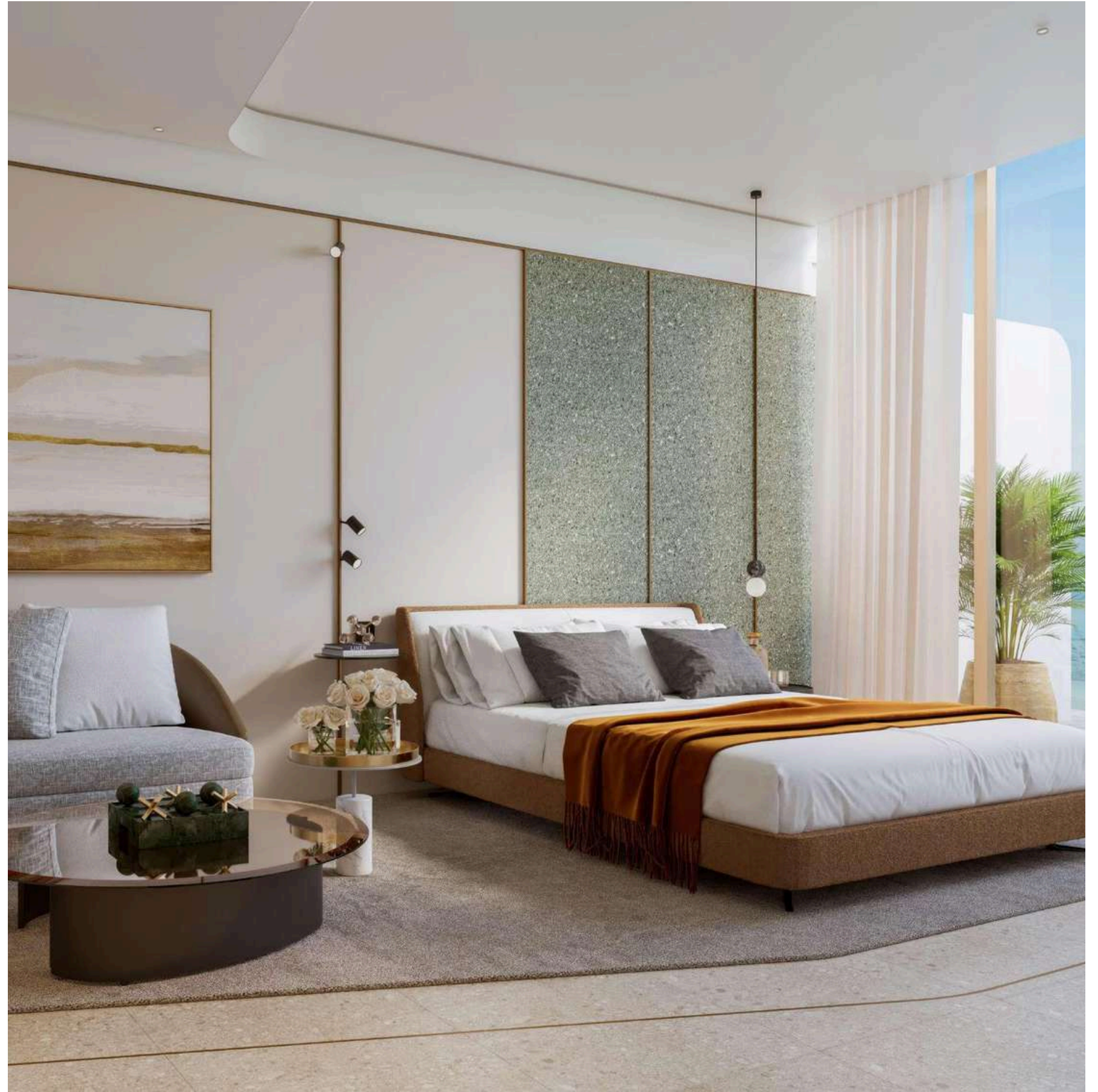


A modern kitchen and dining area. The kitchen features sleek, light-colored cabinetry, a marble backsplash, and a countertop with a sink. A dining table with four chairs is positioned in front of the kitchen. The room is lit with a combination of recessed ceiling lights and a modern pendant light with four spherical bulbs. A dark, textured wall is visible in the background.

The kitchens harmonize functionality and design with sleek cabinetry, integrated appliances, and marble backsplashes that serve as striking statement surfaces. Thoughtful lighting and carefully selected materials ensure each space is both practical and visually captivating.

The bedrooms are serene retreats with clean lines, warm textures, and expansive glazing framing horizon views. Walk-in closets enhance order, while feature walls and lighting add depth and warmth.







The bathrooms combine marble and bronze with custom basins, sculptural lighting, and glass partitions. In select layouts, freestanding tubs are positioned by full-height glazing, seamlessly framing breathtaking sea views and elevating the bathing experience.

Endless Panoramic Vistas

Floor-to-ceiling windows open each residence to sweeping vistas, seamlessly incorporating the surrounding landscape into the living experience.

Views include:

- Arabian Gulf
- Wynn Casino
- Al Marjan Island

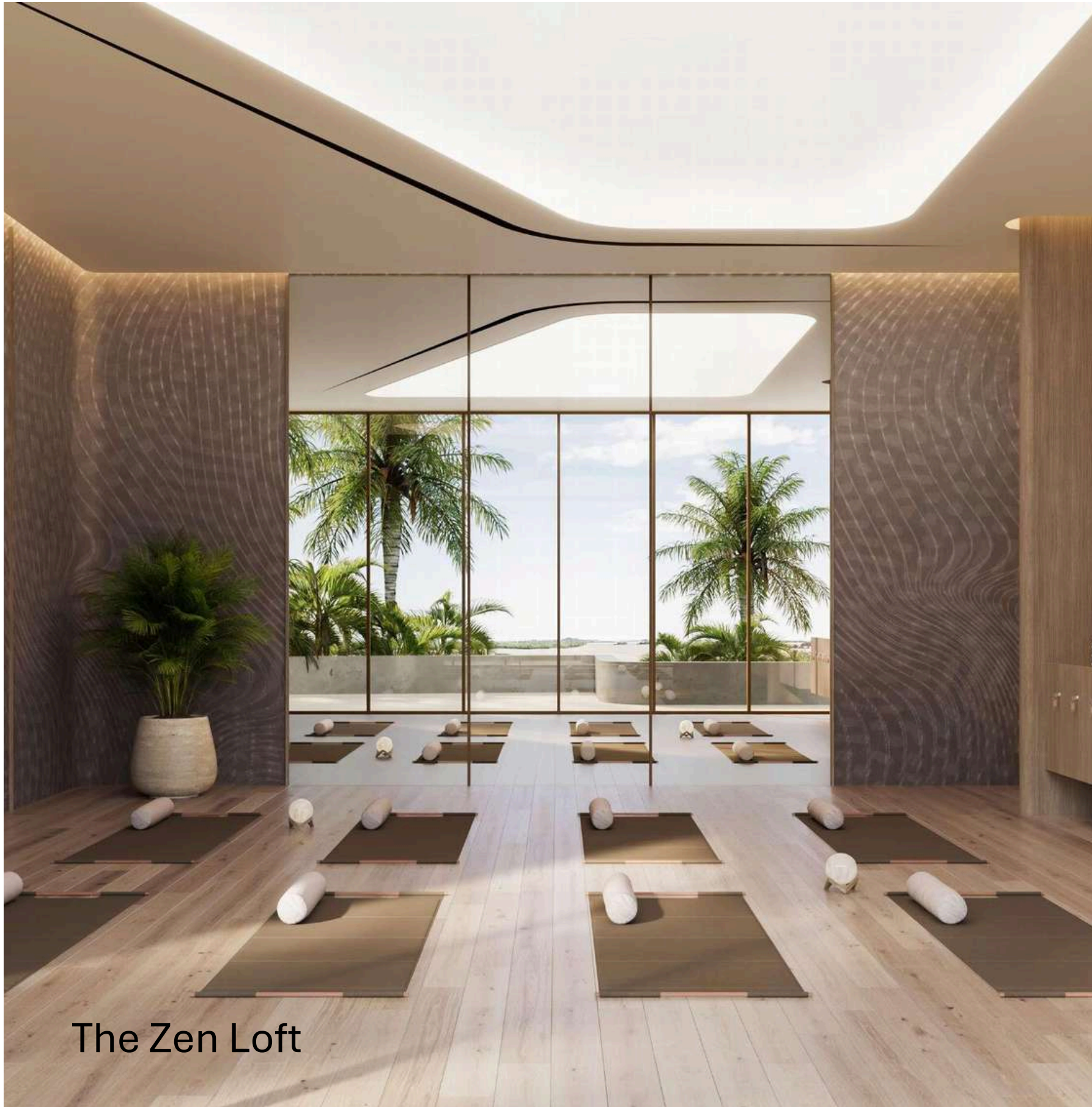




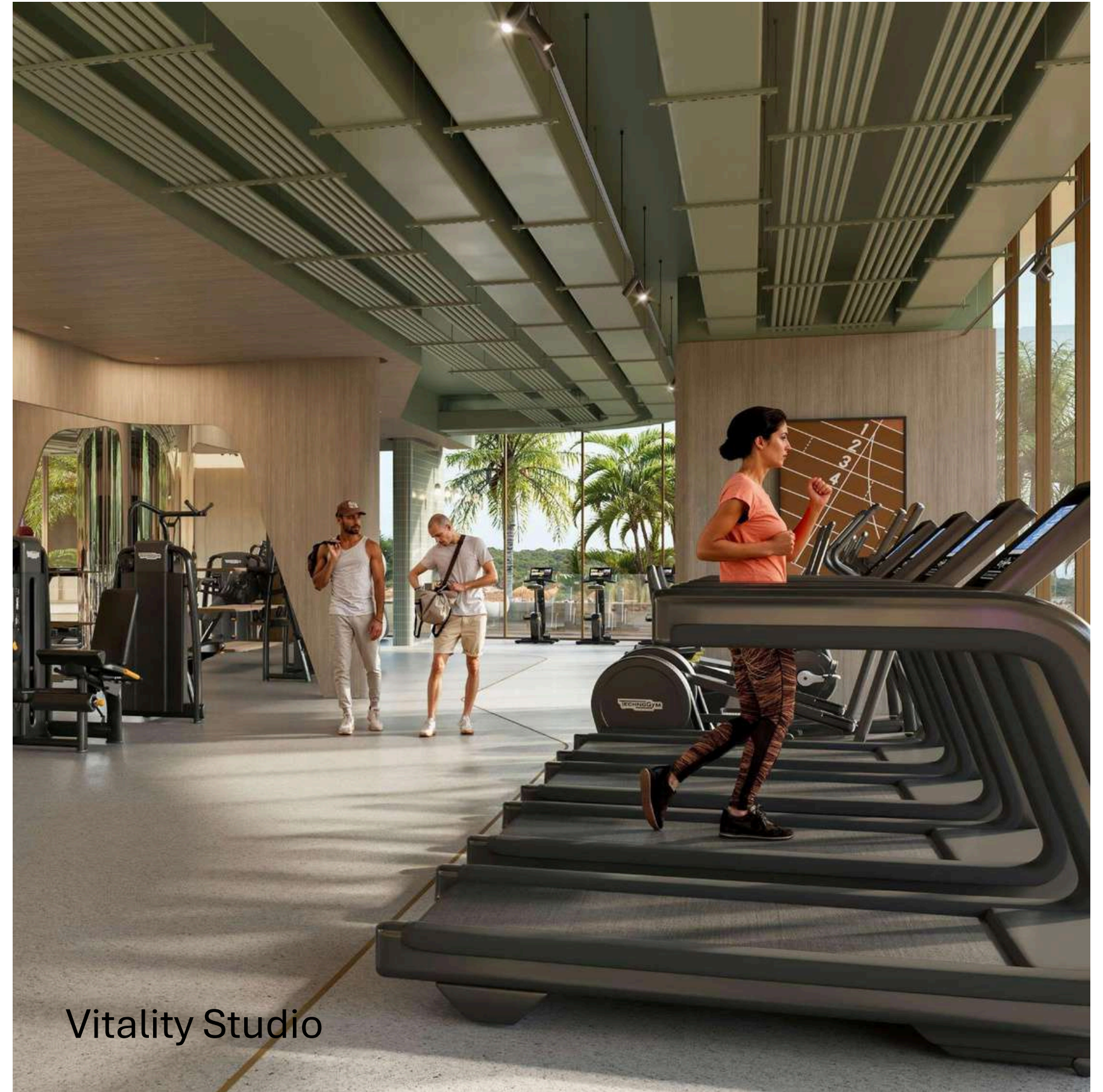
The Island's Most Exclusive Amenity Experience

Palazzo Tissoli extends its “Centre of Life” philosophy to every shared space, blending wellness, leisure, and community in a resort-style setting. Landscaped gardens, pools, lounges, and dedicated areas for fitness, work, and family life are designed to enrich daily living with Italian elegance.

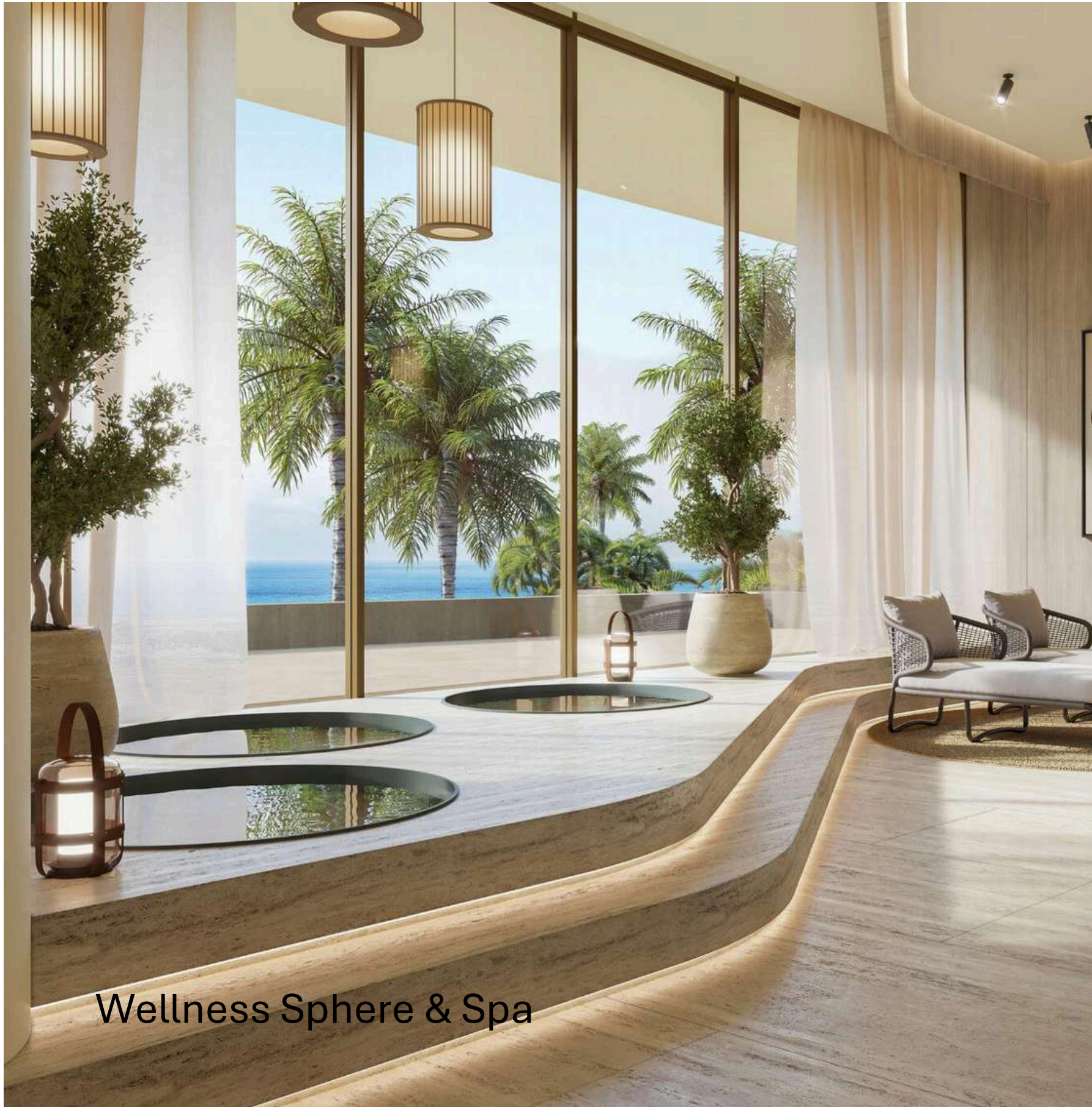




The Zen Loft



Vitality Studio



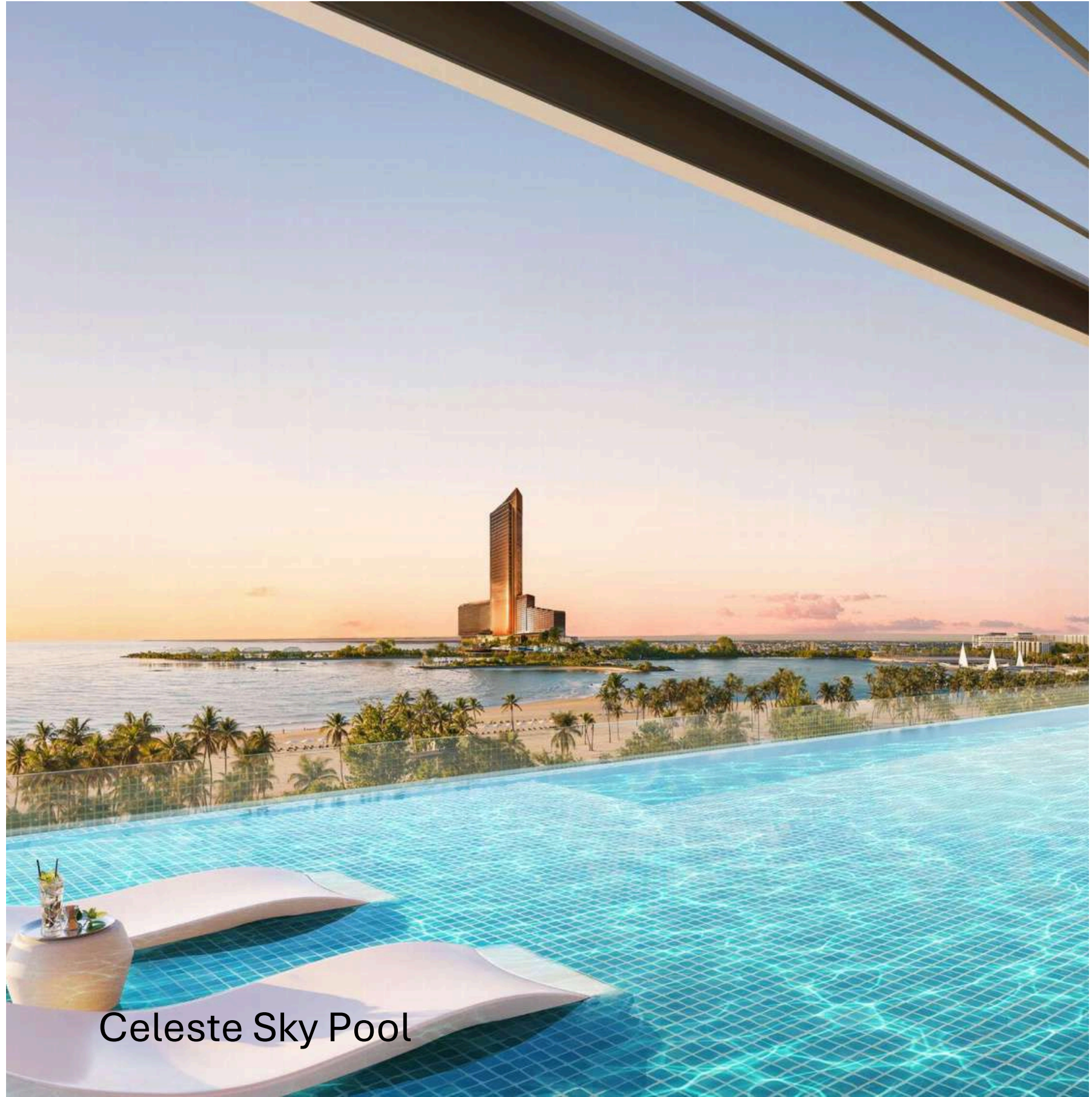
Wellness Sphere & Spa



Energia Running Track



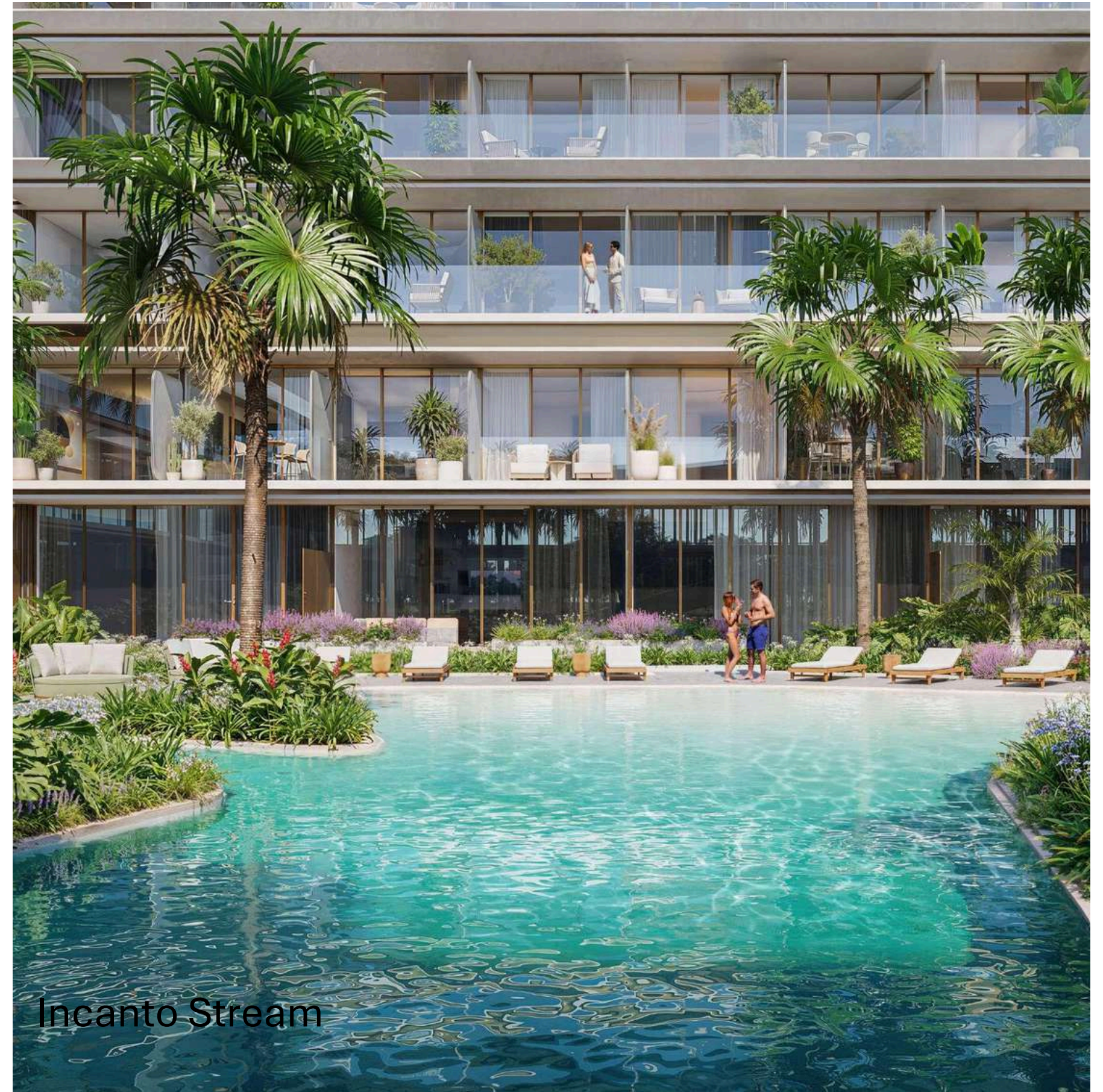
Relaxation Nooks



Celeste Sky Pool



Azure Lagoon



Incanto Stream



The Idea Studio



Palazzo Mare Café



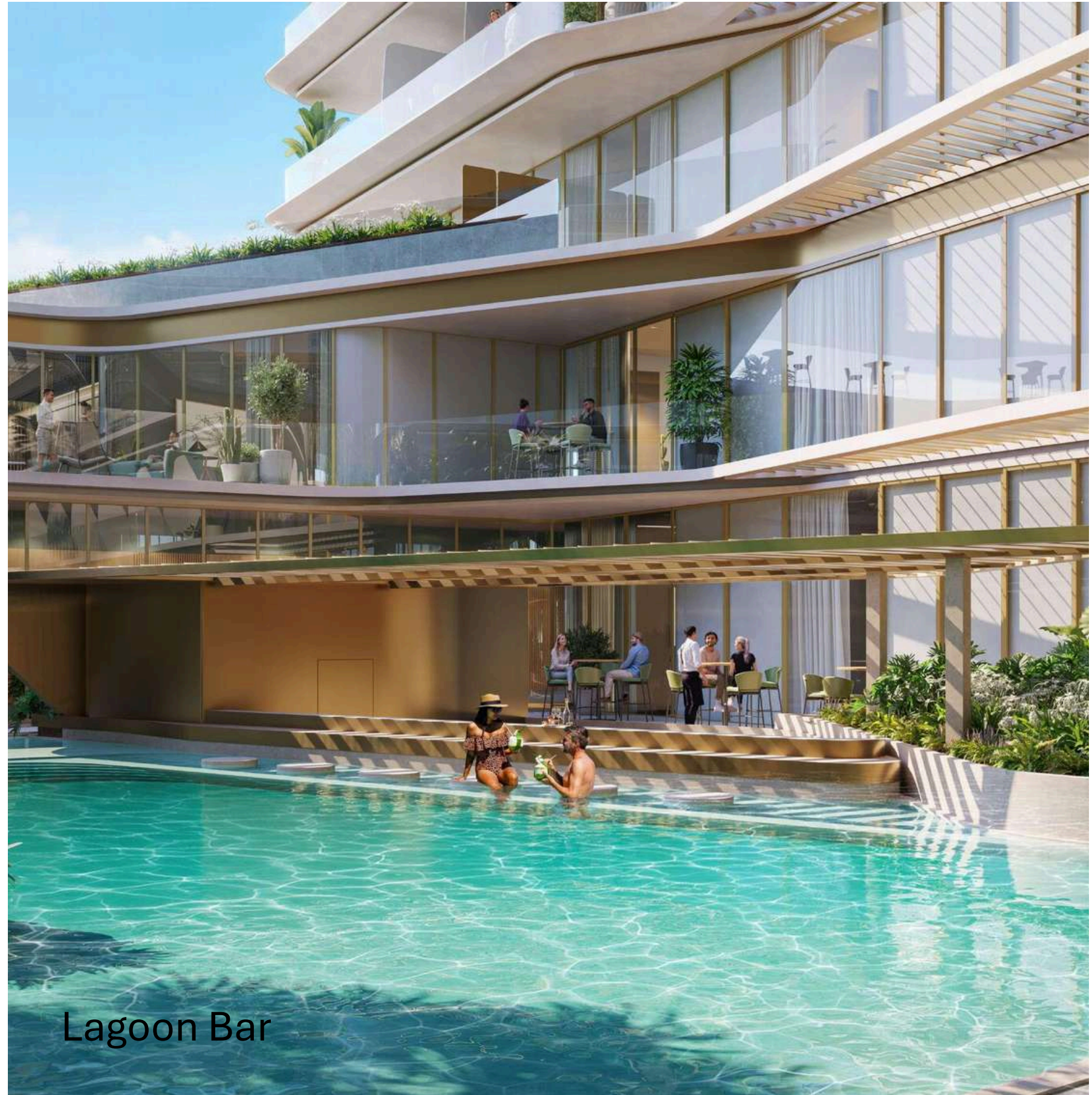
Casa del Sigaro



Cinema Palazzo



Sky Lounge



Lagoon Bar

PROJECT OVERVIEW

PROJECT NAME

Palazzo Tissoli

PROJECT TYPE

Residential & Mixed Use

LOCATION

Al Marjan Island, RAK

BUILDING CONFIGURATION

2B+ G+11+ R



UNIT TYPES

336 Studios

242 One-Bedroom
Apartments

AVERAGE UNIT AREA

Studios: 470 SQ. FT.

One-Bedrooms: 1000 SQ. FT.

PAYMENT PLAN

50|50

HANDOVER

Q2 2028

RAS AL KHAIMAH

An Emirate on the Rise

Ras Al Khaimah is emerging as one of the UAE's most dynamic destinations, a place where natural beauty, economic ambition, and cultural heritage come together.

Its forward-thinking vision is drawing global attention, shaping the emirate into a future-ready hub for living, leisure, and long-term value.

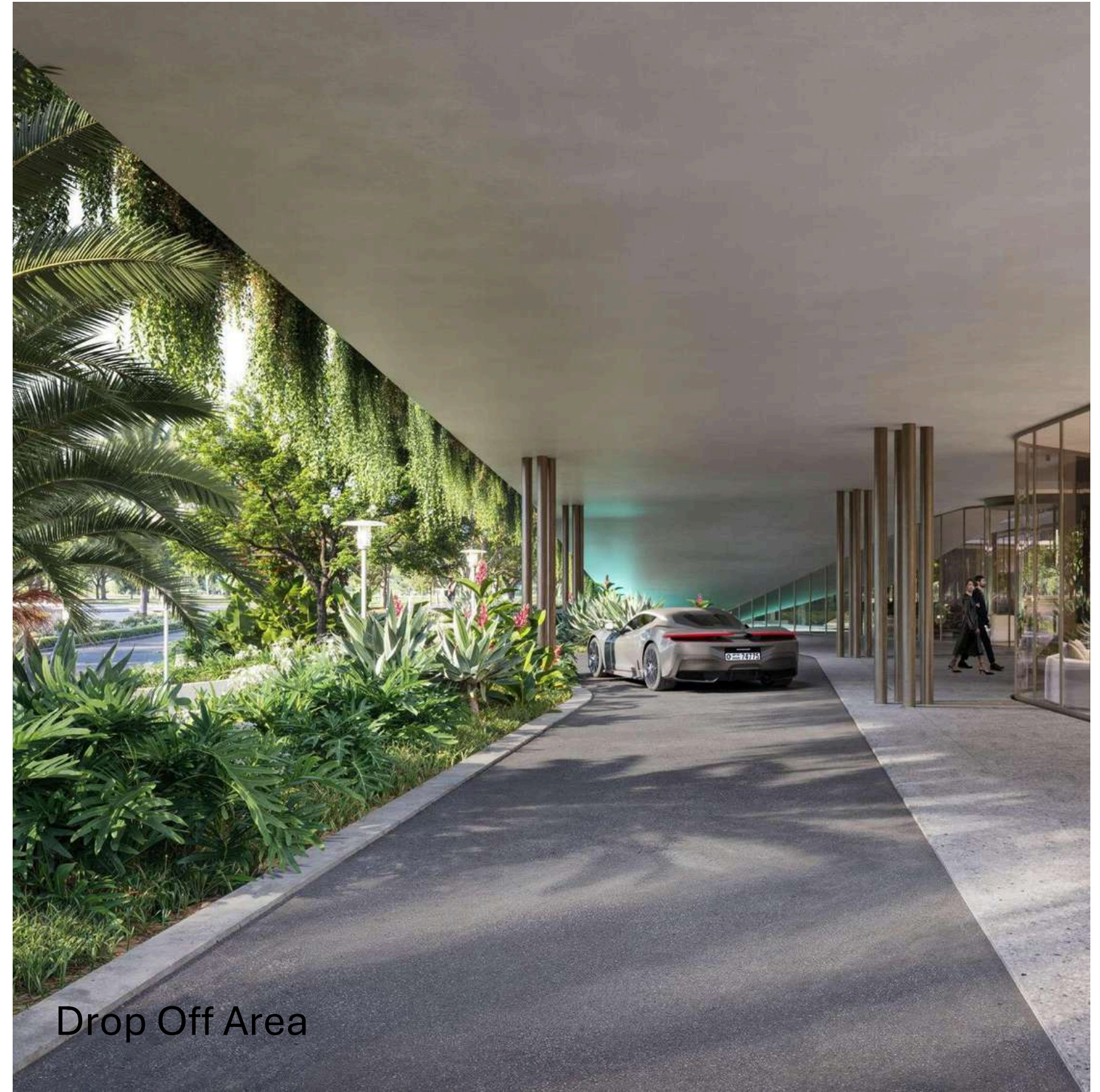


EVOLVING INDICATORS:

- ✦ 1.28M visitors in 2024, tourism revenue up 12%
- ✦ Nearly 4M visitors projected by 2027, 5.5M by 2030
- ✦ 97% occupancy on Al Marjan Island
- ✦ Property values up 30% in the past year
- ✦ Returns forecast between 8–15% post-Wynn opening
- ✦ 100% foreign ownership and capital repatriation
- ✦ Zero corporate and personal tax
- ✦ Long-term residency by investment



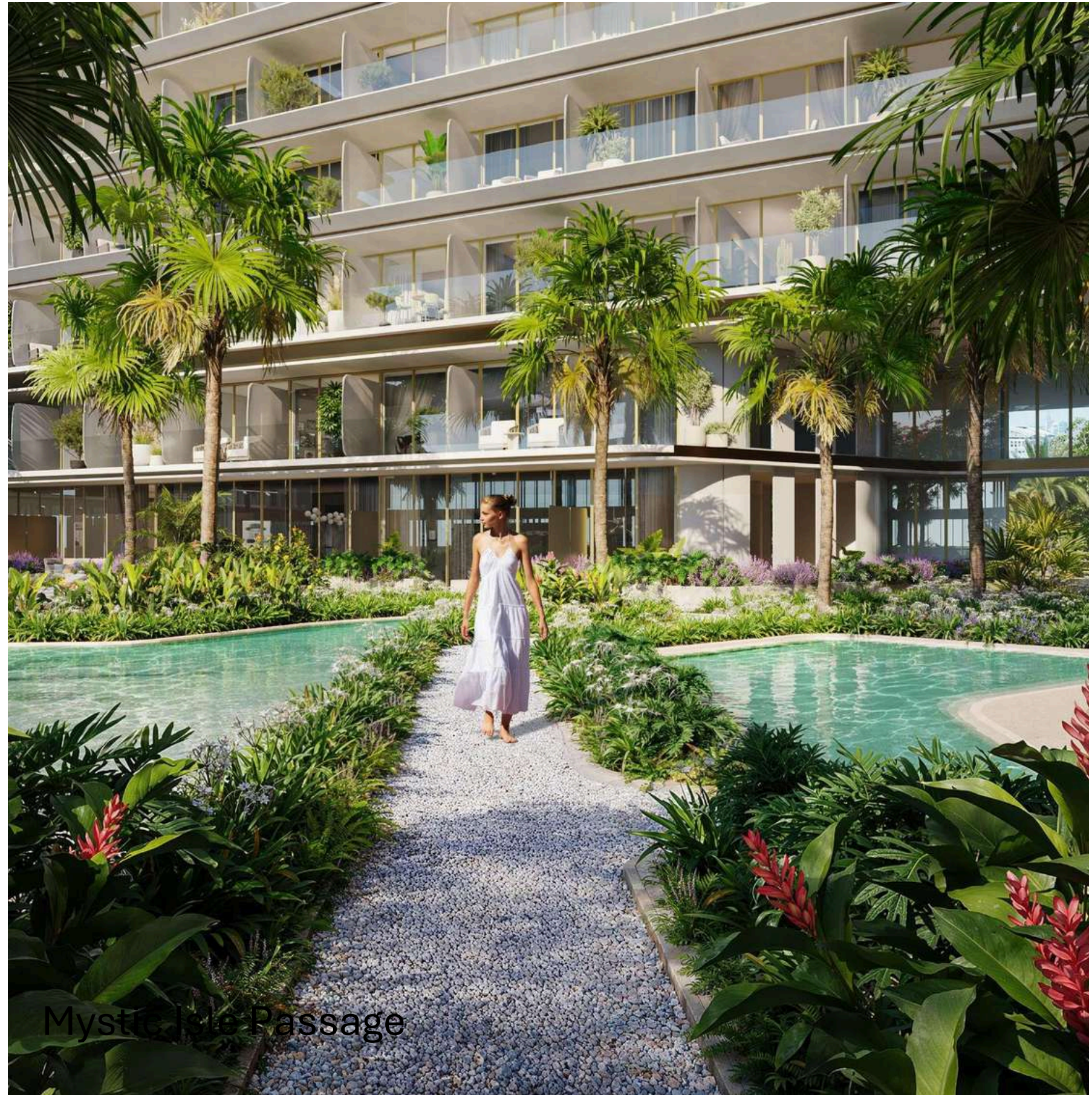
Play Haven



Drop Off Area



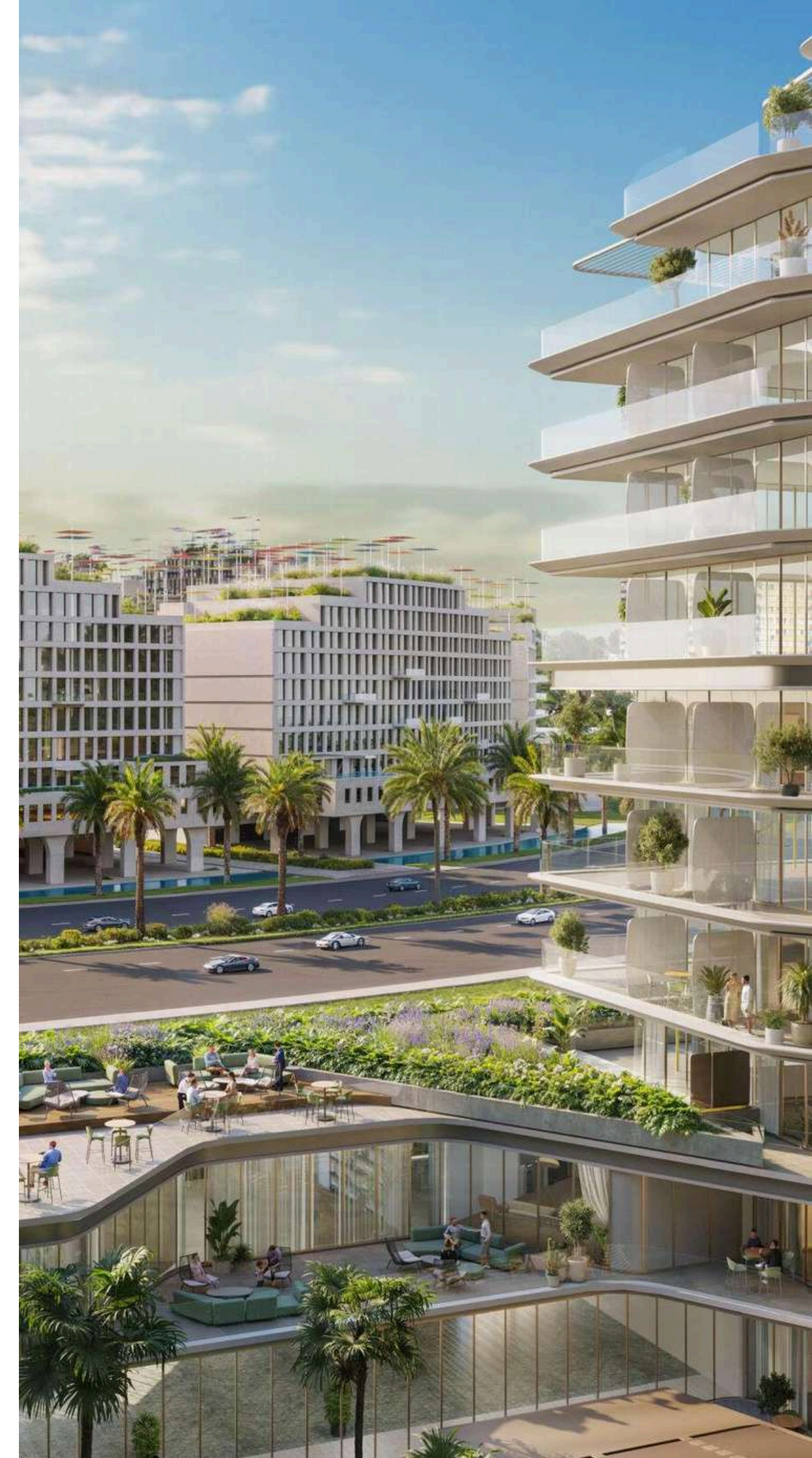
Kiddie Cove Pool
& Tiny Tides Splash Park



Mystic Isle Passage

Where Energy Finds Its Centre

Palazzo Tissoli stands at the crossroads of connectivity, design, contemporary living, and heritage, creating a harmonious “Centre of Life” on Al Marjan Island. Here, landscapes inspire lifestyles, traditions meet aspirations, and every detail connects to form a balanced, elevated living experience.





PALAZZO TISSOTI

PALAZZO TISSOTI
DESIGN BY PIERLUIGI NICOLINI



Where Prestige Meets Property



At Majara Luxury Real Estate L.L.C., we redefine the art of luxury living. Based in the heart of the UAE, we specialize in curating exceptional real estate experiences tailored to the needs of discerning investors, end-users, and global clientele.



With a refined portfolio of premium properties across all seven Emirates, our expertise lies in both off-plan and ready-to-move assets, offering opportunities that blend architectural excellence with investment potential.



We are more than just property consultants & we are partners in your journey to finding the perfect home, investment, or lifestyle. Driven by integrity, market insight, and personalized service, Majara stands as a trusted name in an ever-evolving market.

Contact Us :

Phone: +971564452803

Email: info@majararealestate.com

<https://majararealestate.com/>