

PINNACLE

Pinnacle Residences: The Height of Luxury in Dubai

MAJARA LUXURY REAL ESTATE LLC

Head Office Level 36-01, Po Box :124382 , Trade Center 1, Sheikh Zayed Road , Burj Al Salam Tower Dubai UAE

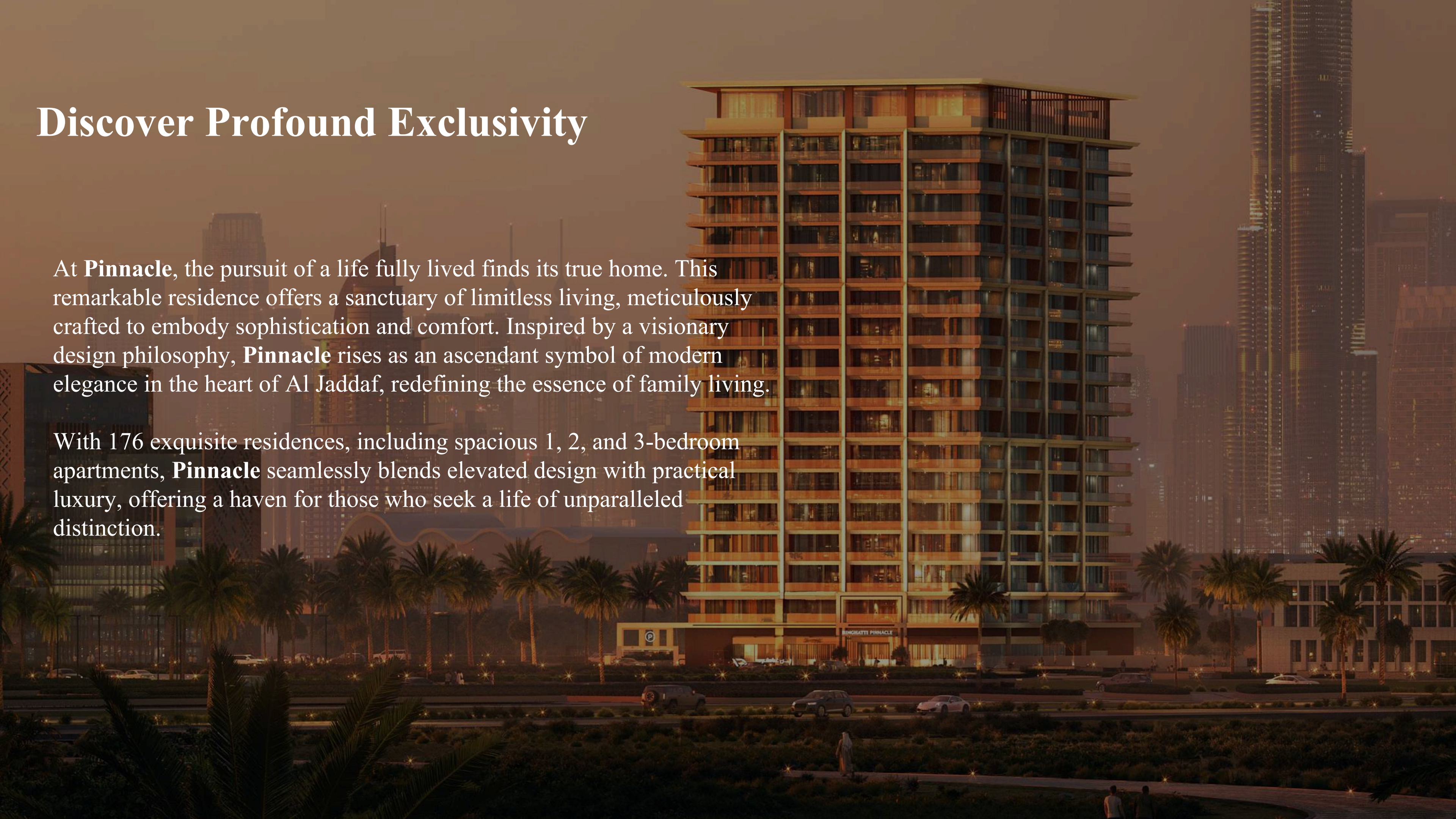


Majara Presents Pinnacle Residences: The Ultimate in Luxury Living at Al Jaddaf, Dubai

Discover Profound Exclusivity

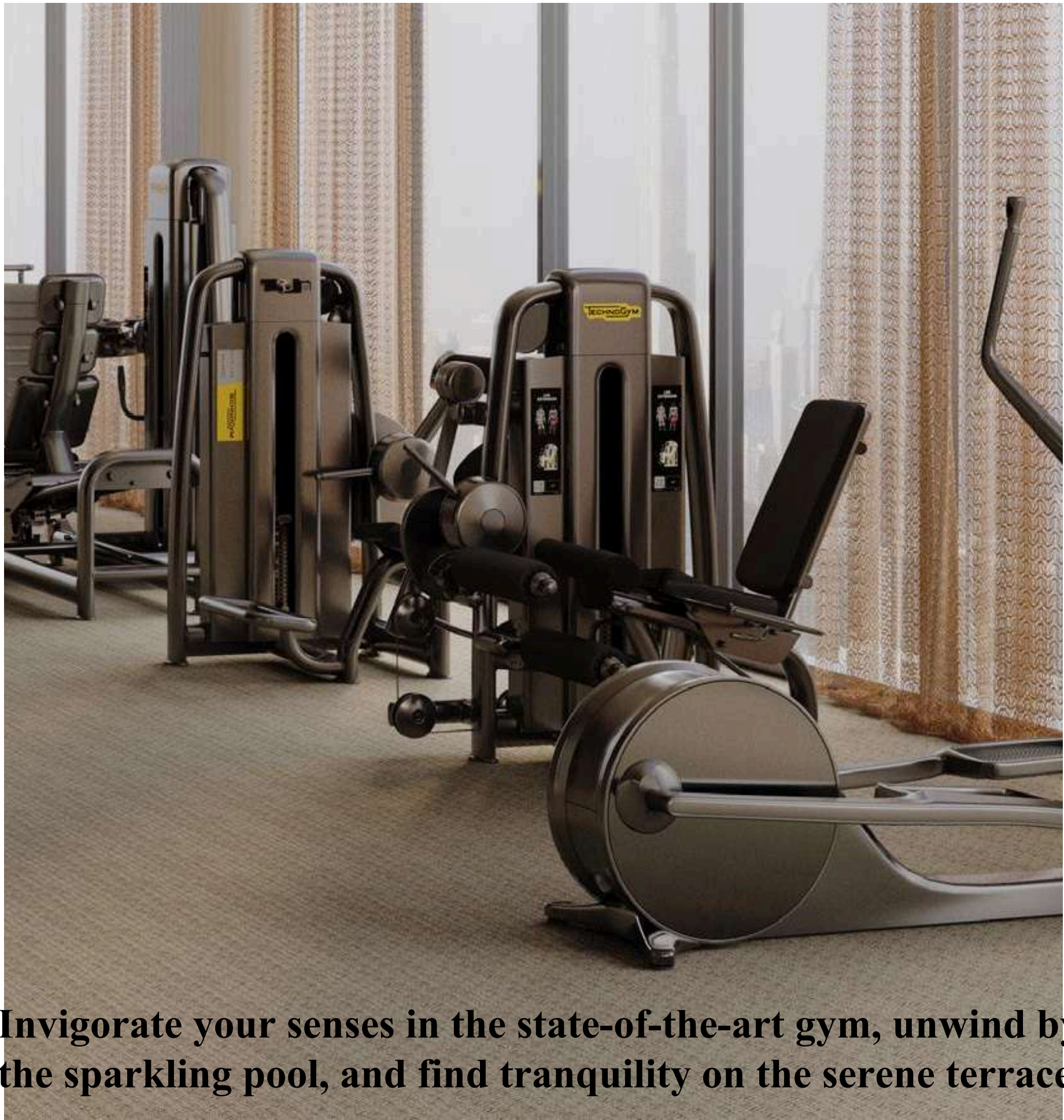
At **Pinnacle**, the pursuit of a life fully lived finds its true home. This remarkable residence offers a sanctuary of limitless living, meticulously crafted to embody sophistication and comfort. Inspired by a visionary design philosophy, **Pinnacle** rises as an ascendant symbol of modern elegance in the heart of Al Jaddaf, redefining the essence of family living.

With 176 exquisite residences, including spacious 1, 2, and 3-bedroom apartments, **Pinnacle** seamlessly blends elevated design with practical luxury, offering a haven for those who seek a life of unparalleled distinction.





**Embrace the Essence of
Supreme Exclusivity**



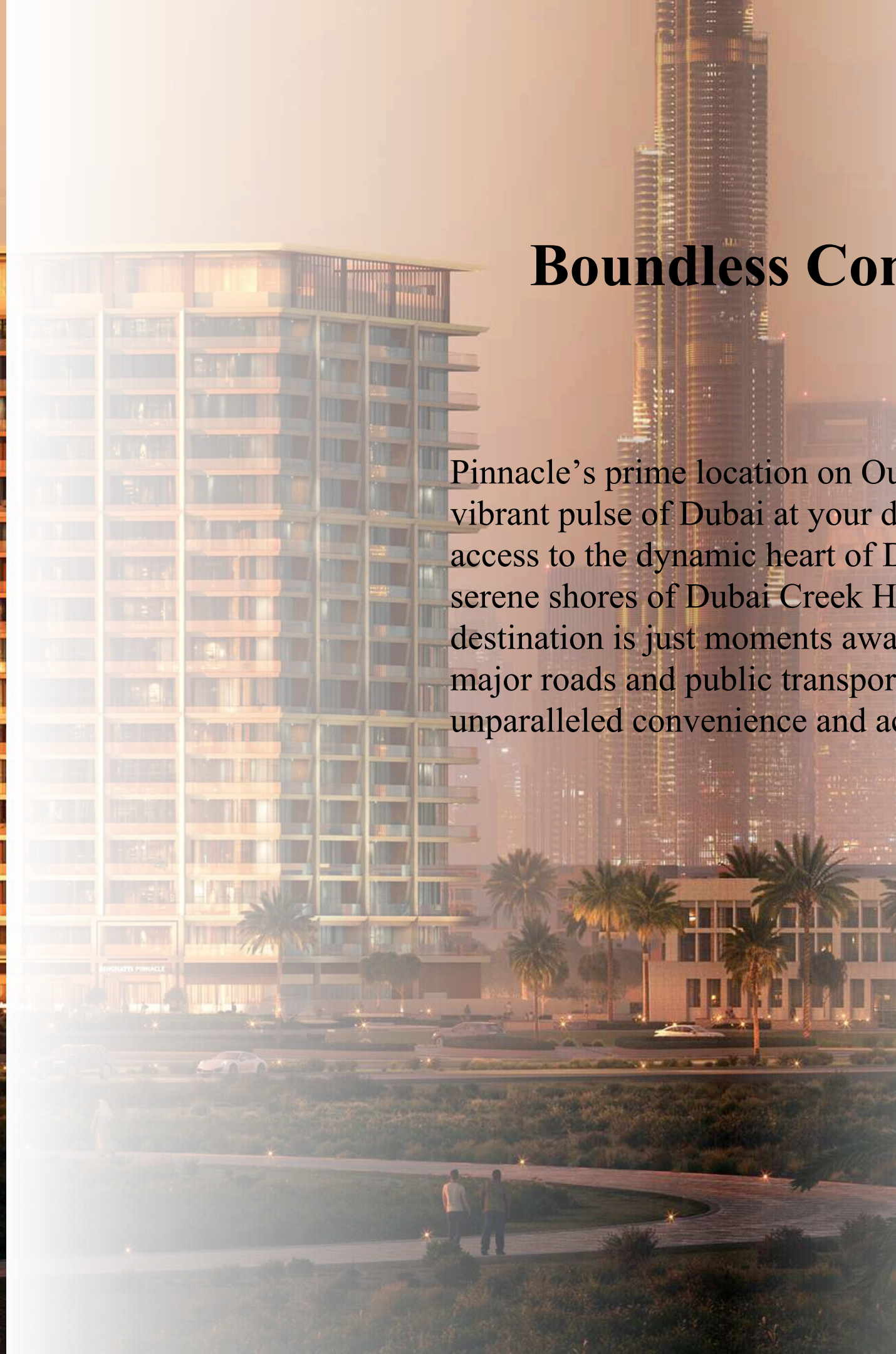
Invigorate your senses in the state-of-the-art gym, unwind by the sparkling pool, and find tranquility on the serene terrace.





Boundless Connectivity

Pinnacle's prime location on Oud Metha Road places the vibrant pulse of Dubai at your doorstep. With effortless access to the dynamic heart of Downtown Dubai and the serene shores of Dubai Creek Harbor, every essential destination is just moments away. Seamless connectivity to major roads and public transport ensures a lifestyle of unparalleled convenience and accessibility.

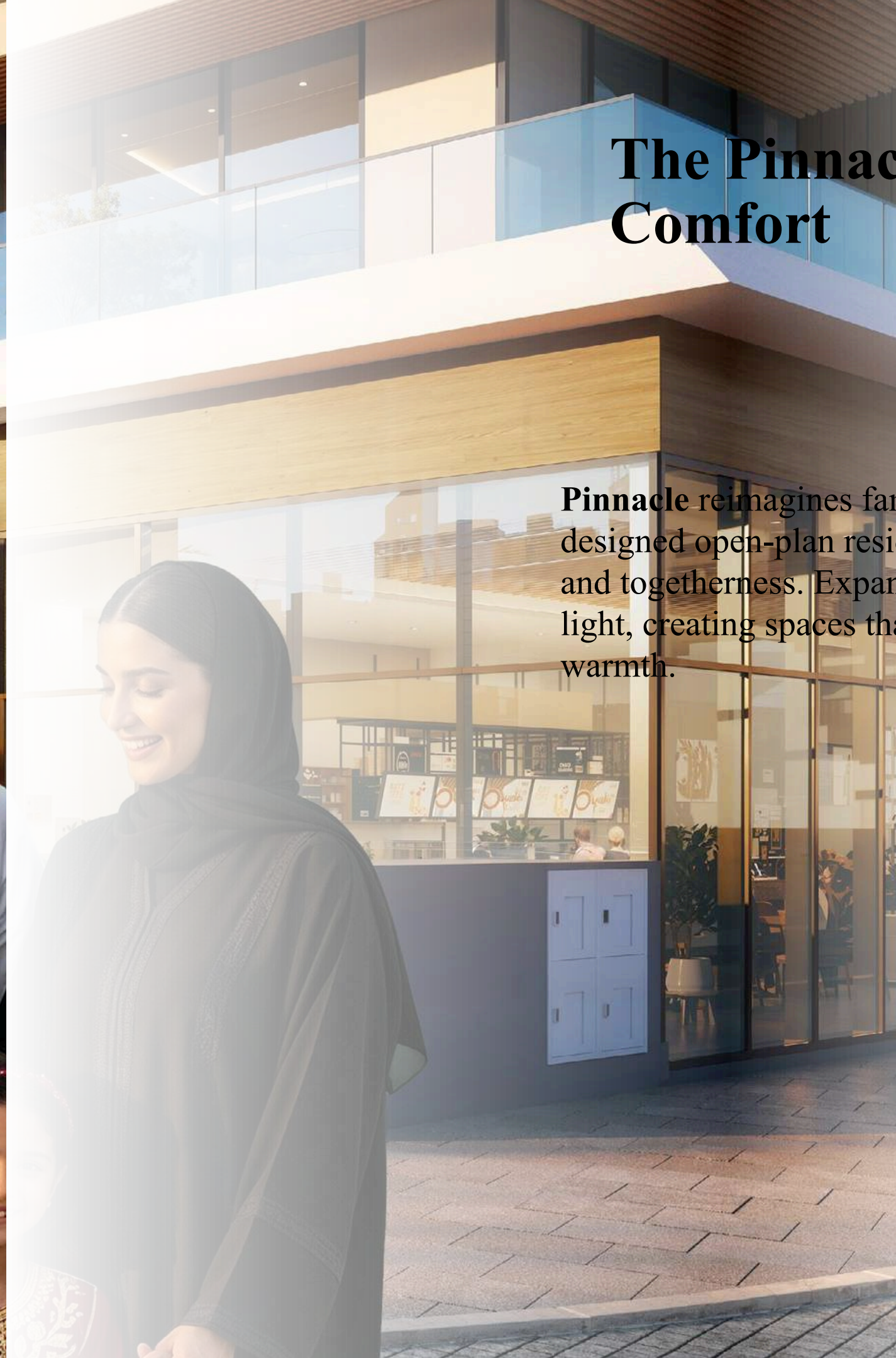






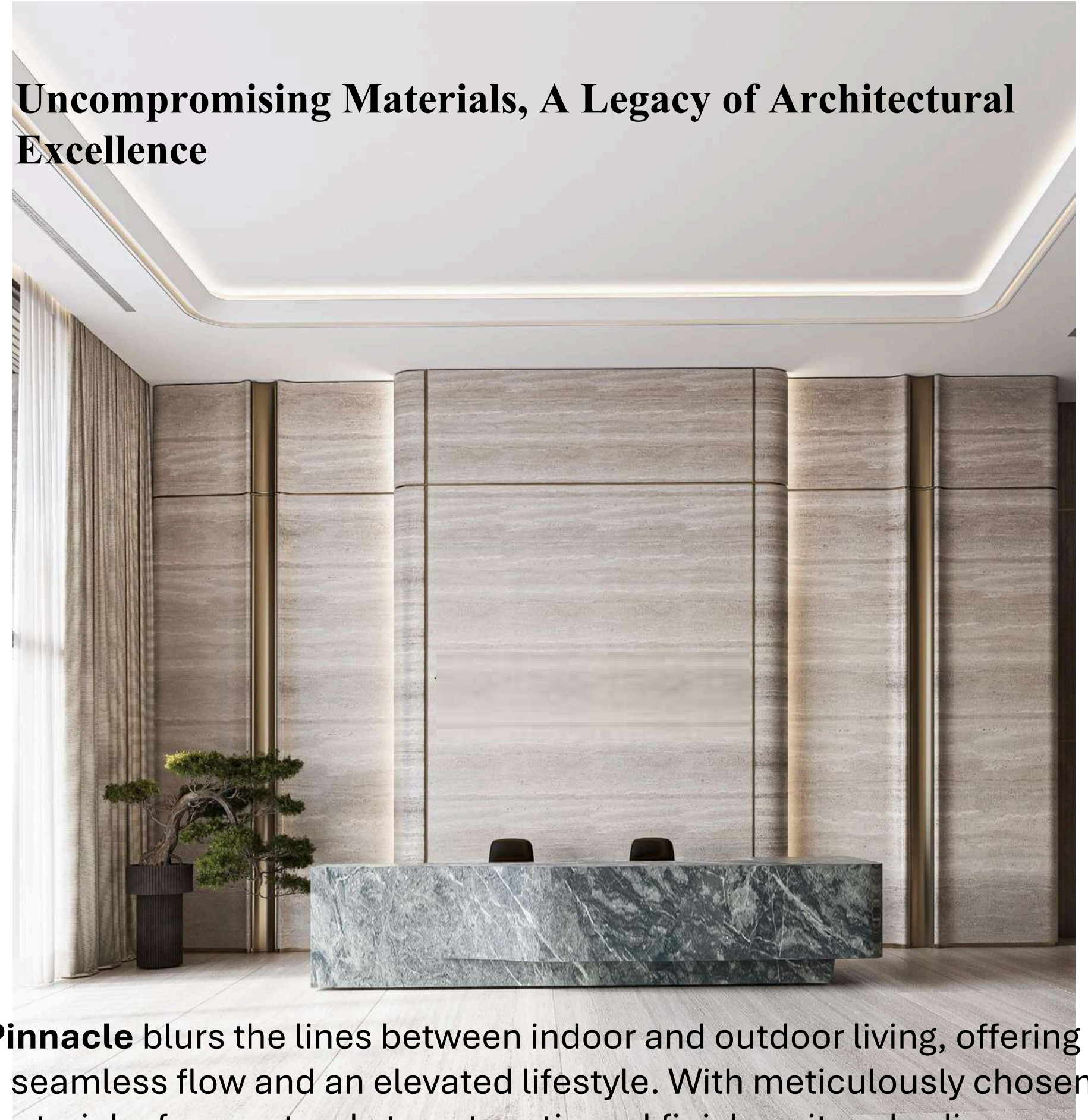
The Pinnacle of Family Comfort

Pinnacle reimagines family living with thoughtfully designed open-plan residences that foster connection and togetherness. Expansive windows invite natural light, creating spaces that radiate comfort and warmth.





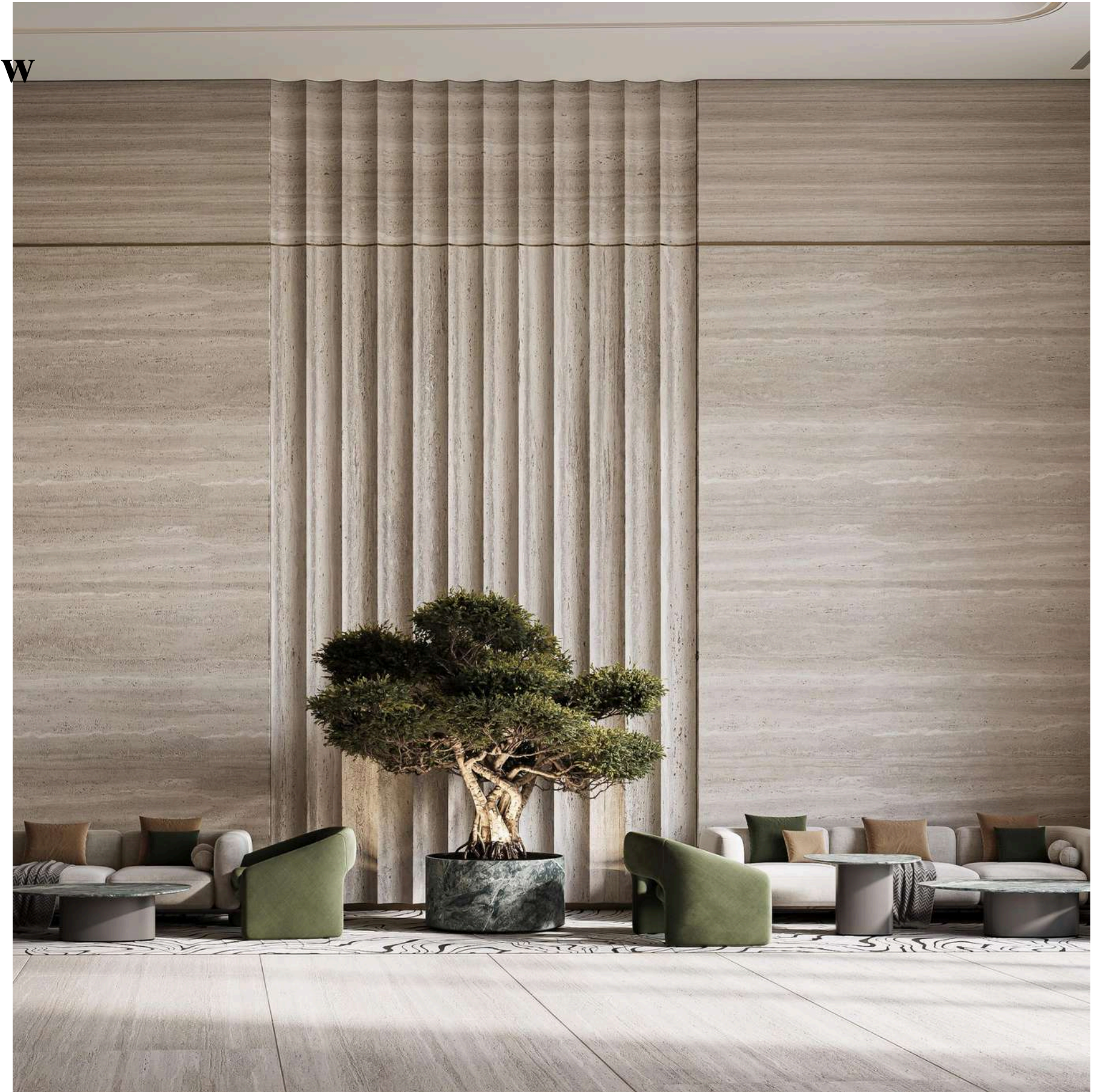
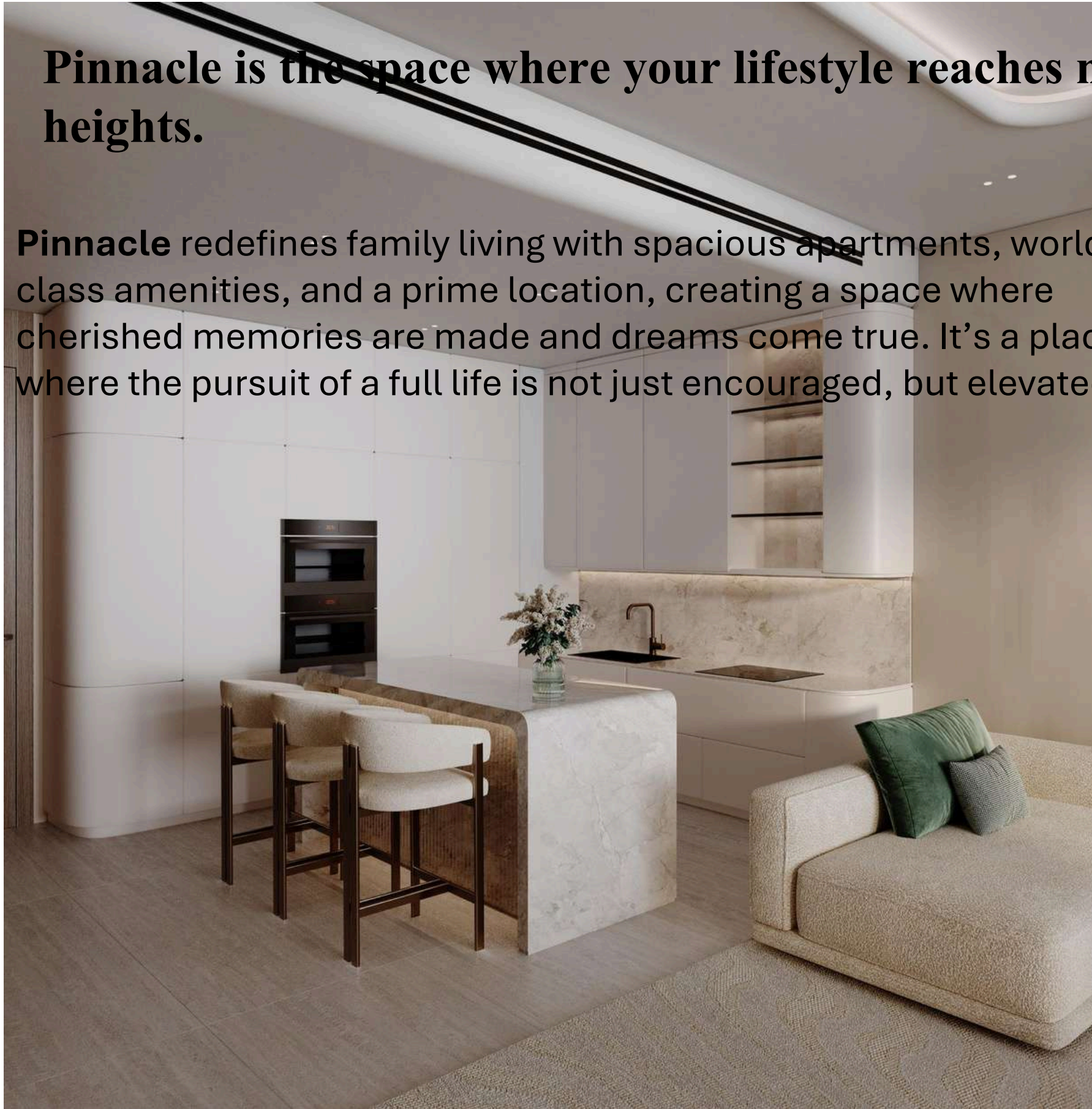
Uncompromising Materials, A Legacy of Architectural Excellence



Pinnacle blurs the lines between indoor and outdoor living, offering a seamless flow and an elevated lifestyle. With meticulously chosen materials, from natural stone to artisanal finishes, it embodies timeless luxury and refined elegance.

Pinnacle is the space where your lifestyle reaches new heights.

Pinnacle redefines family living with spacious apartments, world-class amenities, and a prime location, creating a space where cherished memories are made and dreams come true. It's a place where the pursuit of a full life is not just encouraged, but elevated.

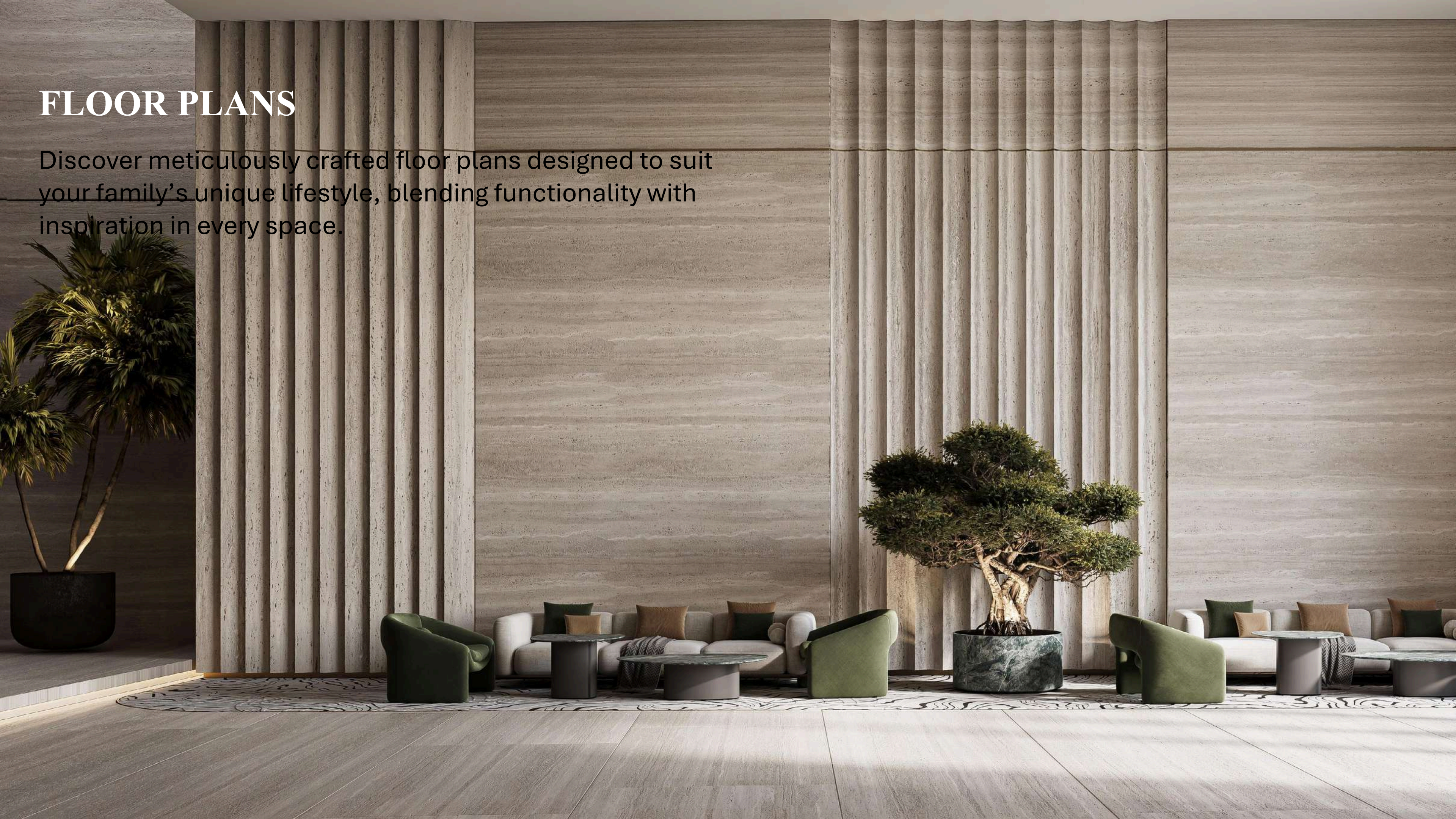






FLOOR PLANS

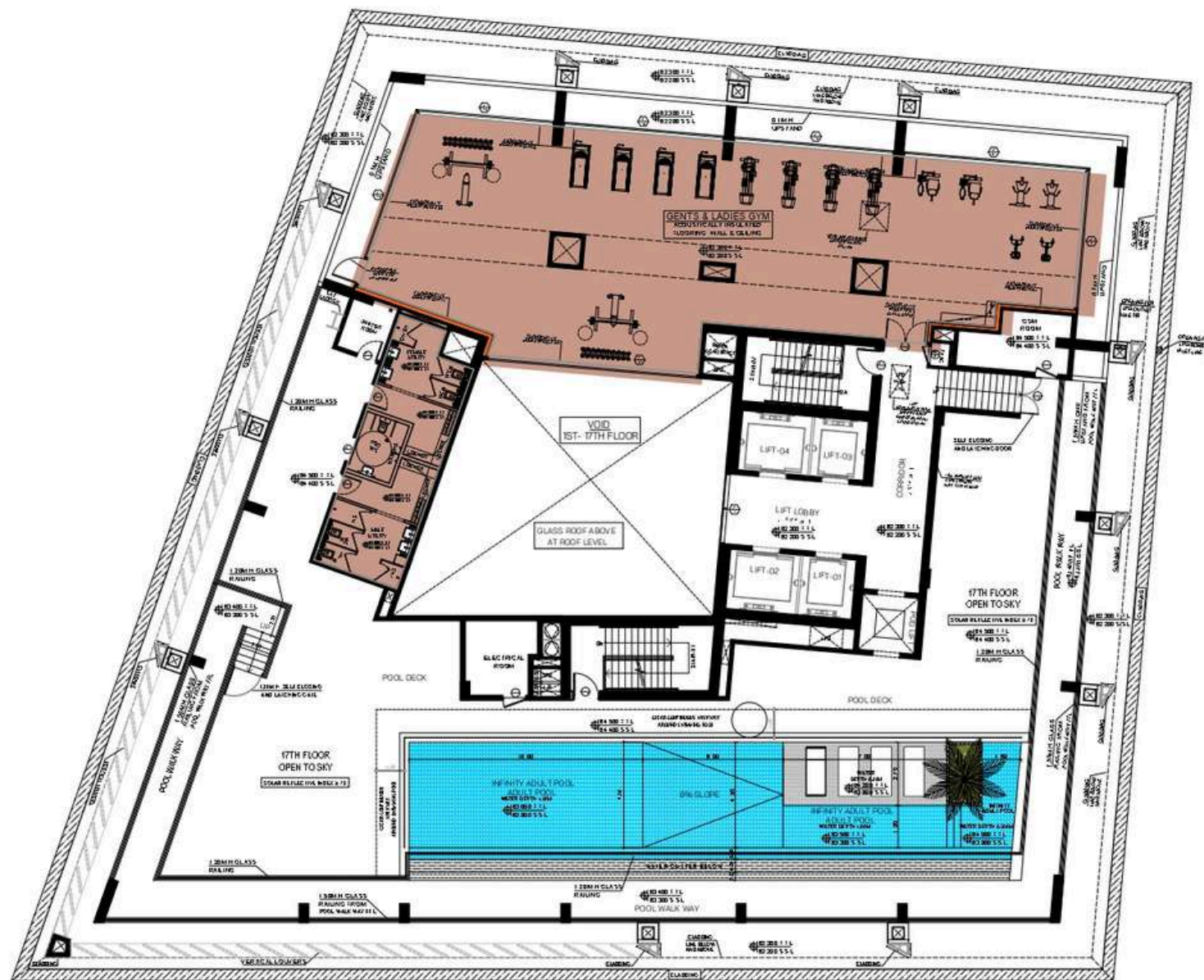
Discover meticulously crafted floor plans designed to suit your family's unique lifestyle, blending functionality with inspiration in every space.



Limitlessness in Al Jaddaf

PINNACLE'S LOCATION IN THE VIBRANT HEART OF AL JADDAF PLACES YOU AT THE CENTRE OF DUBAI'S UNIQUE ENERGY. CONNECTED TO THE CITY'S MAGIC, YET OFFERING REFUGE WHERE DESIGN AND FREEDOM INTERTWINE. IMAGINE WAKING TO PANORAMIC VISTAS OF THE ICONIC BURJ KHALIFA, THE MONUMENTAL DUBAI FRAME, AND THE EVER-EVOLVING SHEIKH ZAYED ROAD.



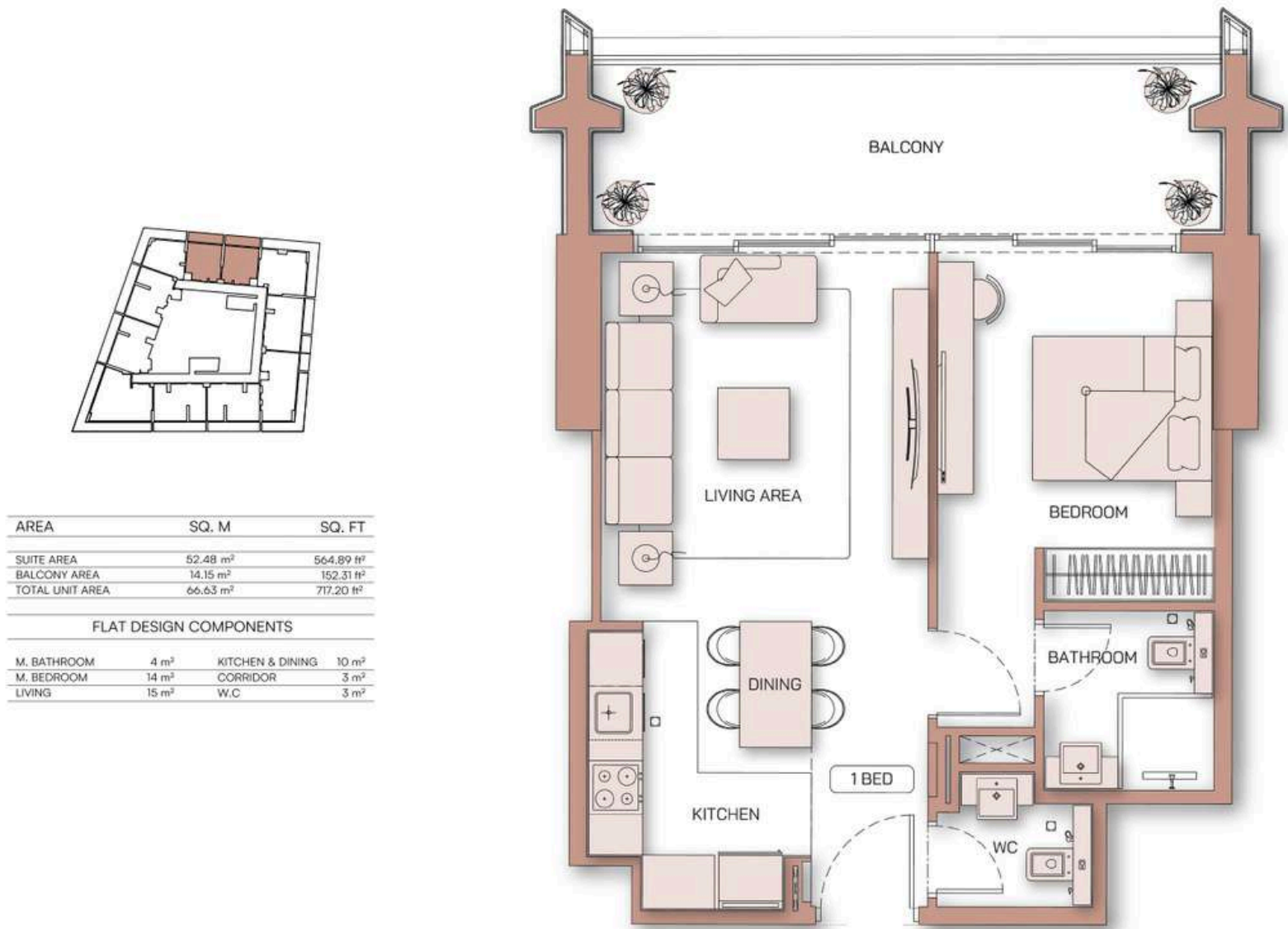


17TH
TYPICAL FLOOR

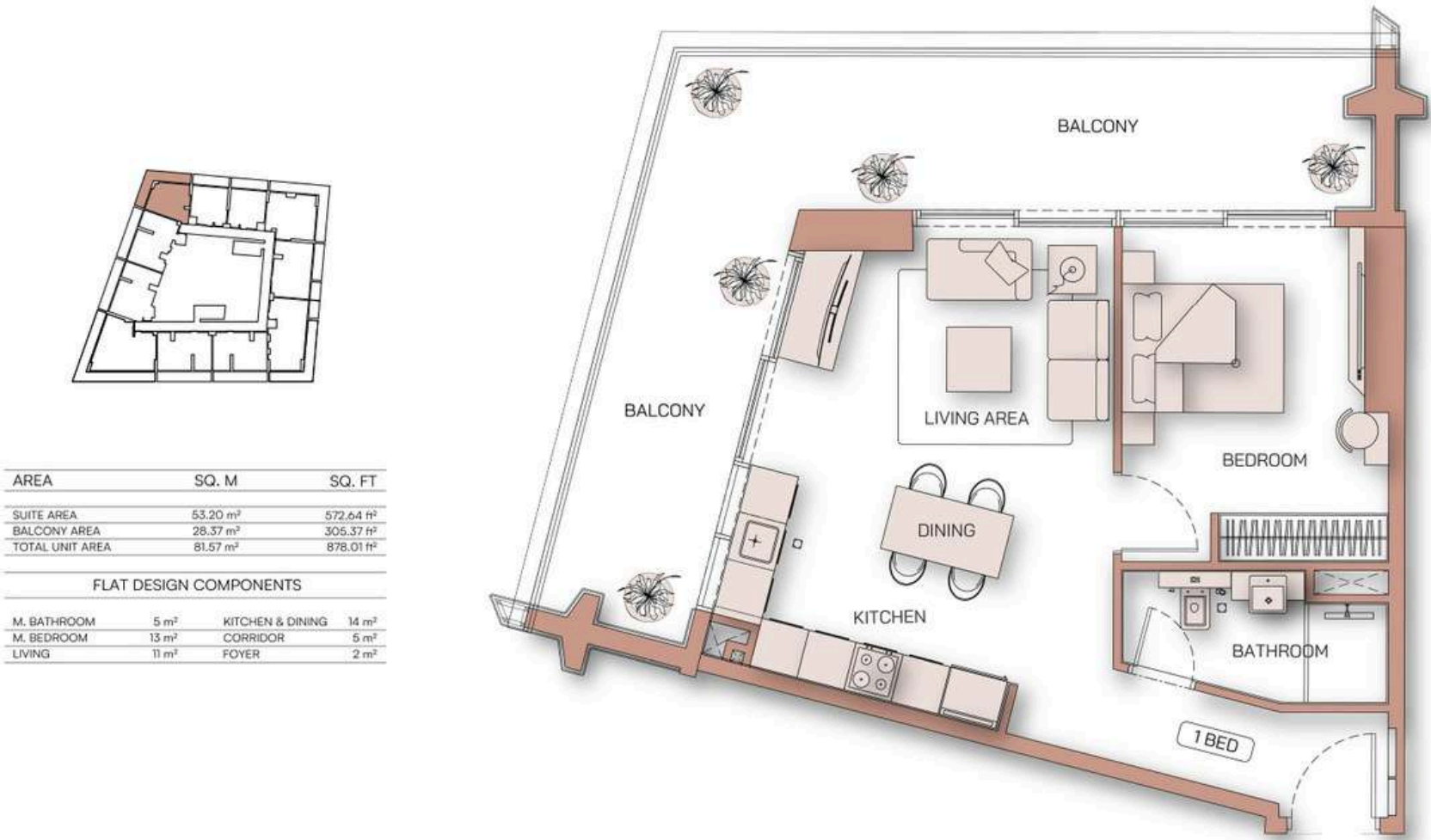


ONE
BEDROOM

1 BEDROOM
TYPE 01

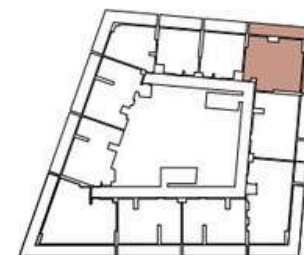


1 BEDROOM
TYPE 02



TWO BEDROOM

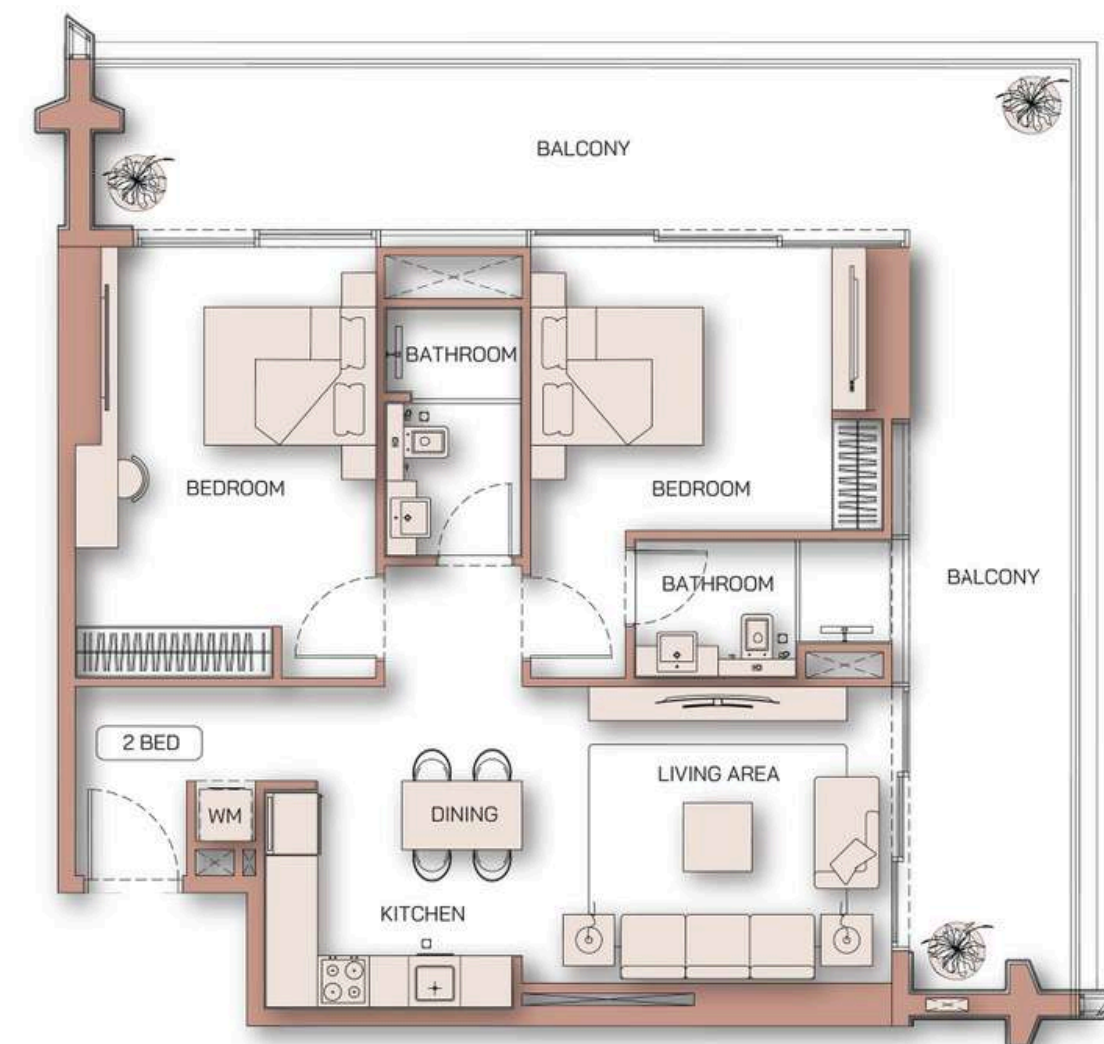
2 BEDROOM TYPE 01



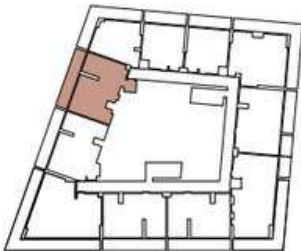
AREA	SQ. M	SQ. FT
SUITE AREA	81.53 m ²	877.58 ft ²
BALCONY AREA	40.88 m ²	440.03 ft ²
TOTAL UNIT AREA	122.41 m ²	1317.61 ft ²

FLAT DESIGN COMPONENTS

M. BATHROOM	4 m ²	KITCHEN & DINING	10 m ²
M. BEDROOM	15 m ²	CORRIDOR	2 m ²
BATHROOM	5 m ²	FOYER	5 m ²
BEDROOM	17 m ²	LAUNDRY	1 m ²
LIVING	15 m ²		



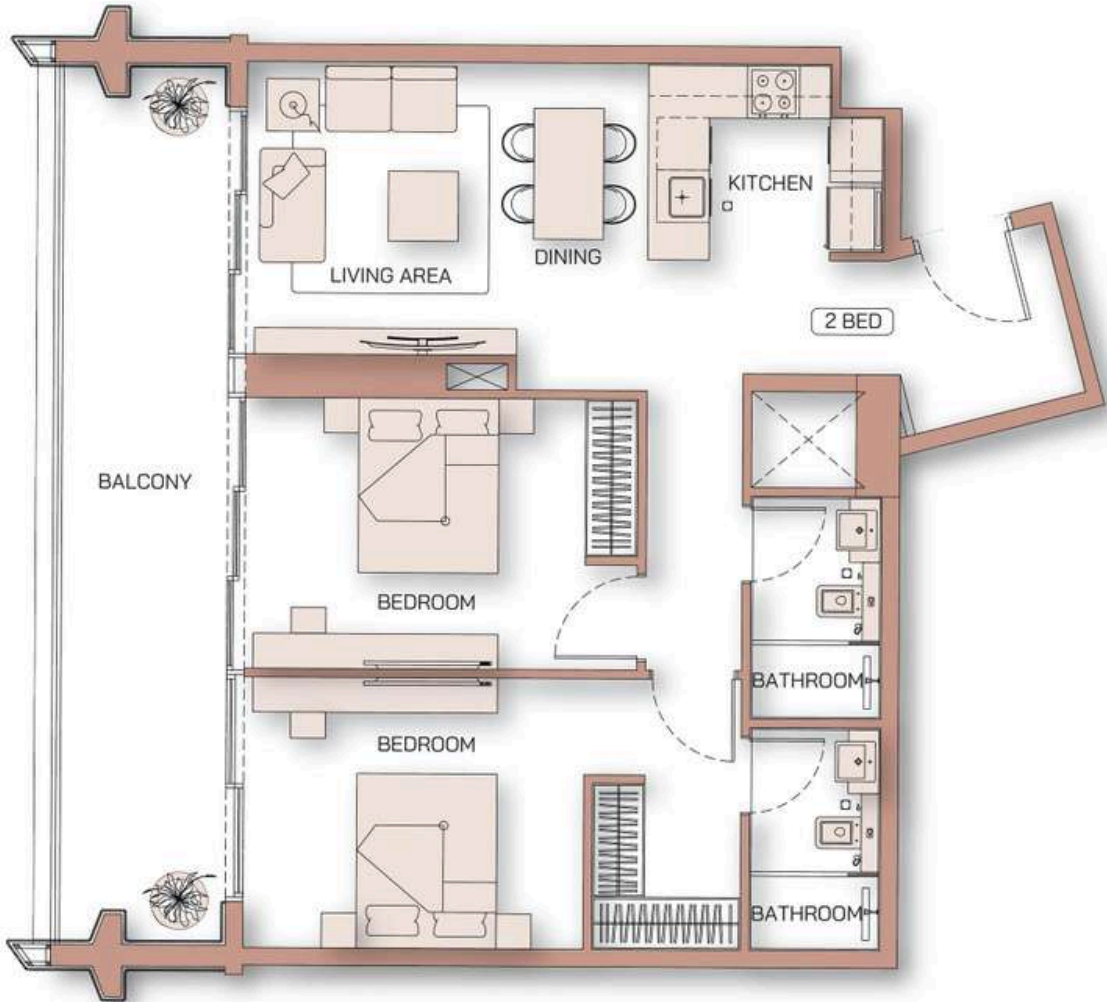
2 BEDROOM
TYPE 02



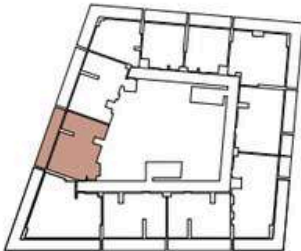
AREA	SQ. M	SQ. FT
SUITE AREA	79.98 m²	860.90 ft²
BALCONY AREA	20.41 m²	219.69 ft²
TOTAL UNIT AREA	100.39 m²	1080.59 ft²

FLAT DESIGN COMPONENTS

M. BATHROOM	4 m²	LIVING & DINING	16 m²
M. BEDROOM	18 m²	KITCHEN	6 m²
BATHROOM	4 m²	CORRIDOR	7 m²
BEDROOM	14 m²	FOYER	4 m²



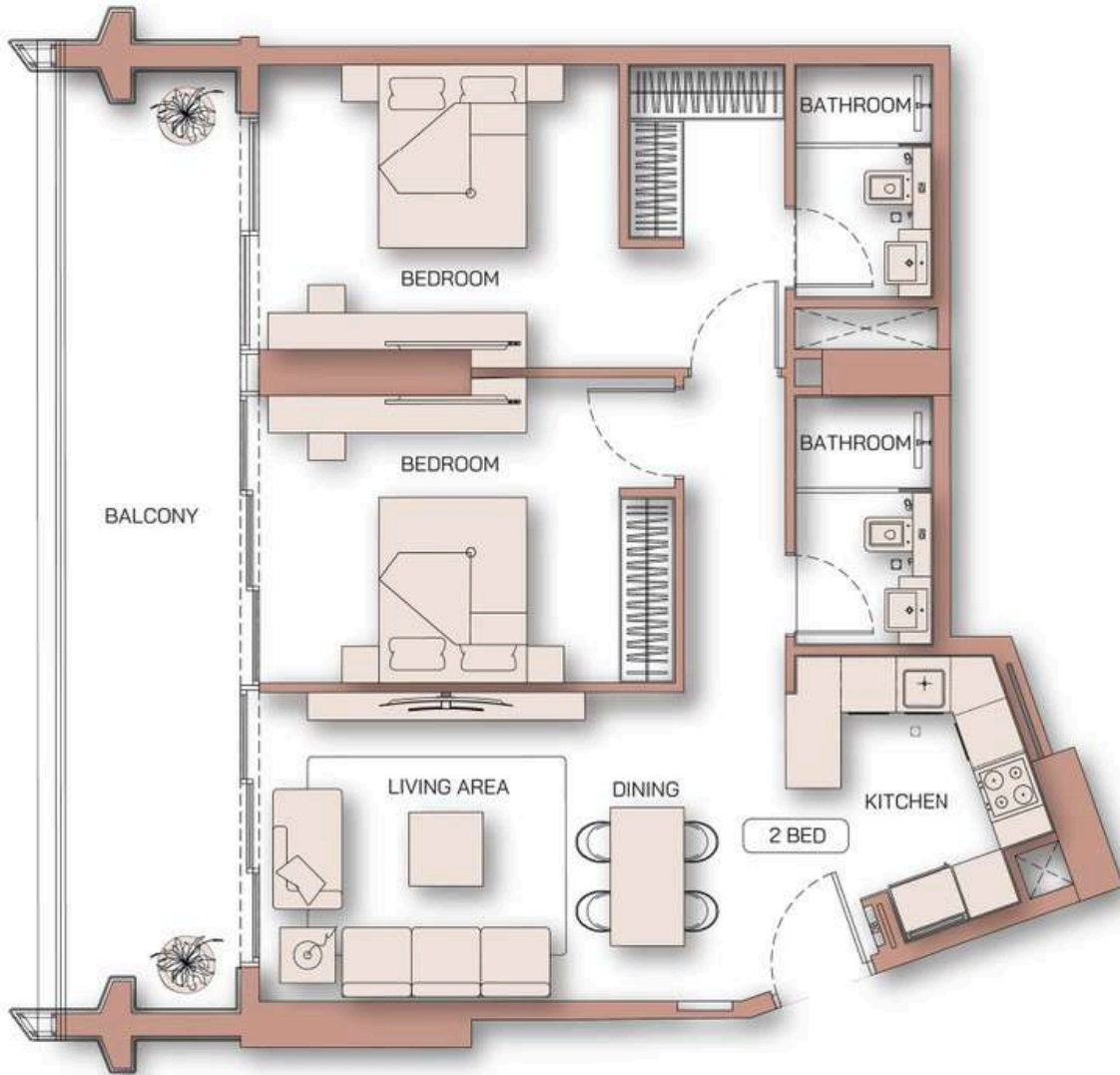
2 BEDROOM
TYPE 03



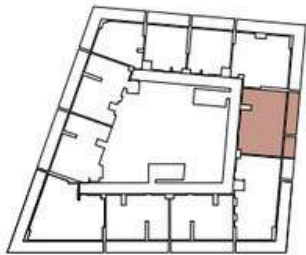
AREA	SQ. M	SQ. FT
SUITE AREA	79.78 m²	858.74 ft²
BALCONY AREA	20.71 m²	222.92 ft²
TOTAL UNIT AREA	100.49 m²	1081.67 ft²

FLAT DESIGN COMPONENTS

M. BATHROOM	4 m²	LIVING & DINING	18 m²
M. BEDROOM	18 m²	KITCHEN	7 m²
BATHROOM	4 m²	CORRIDOR	4 m²
BEDROOM	14 m²	FOYER	3 m²

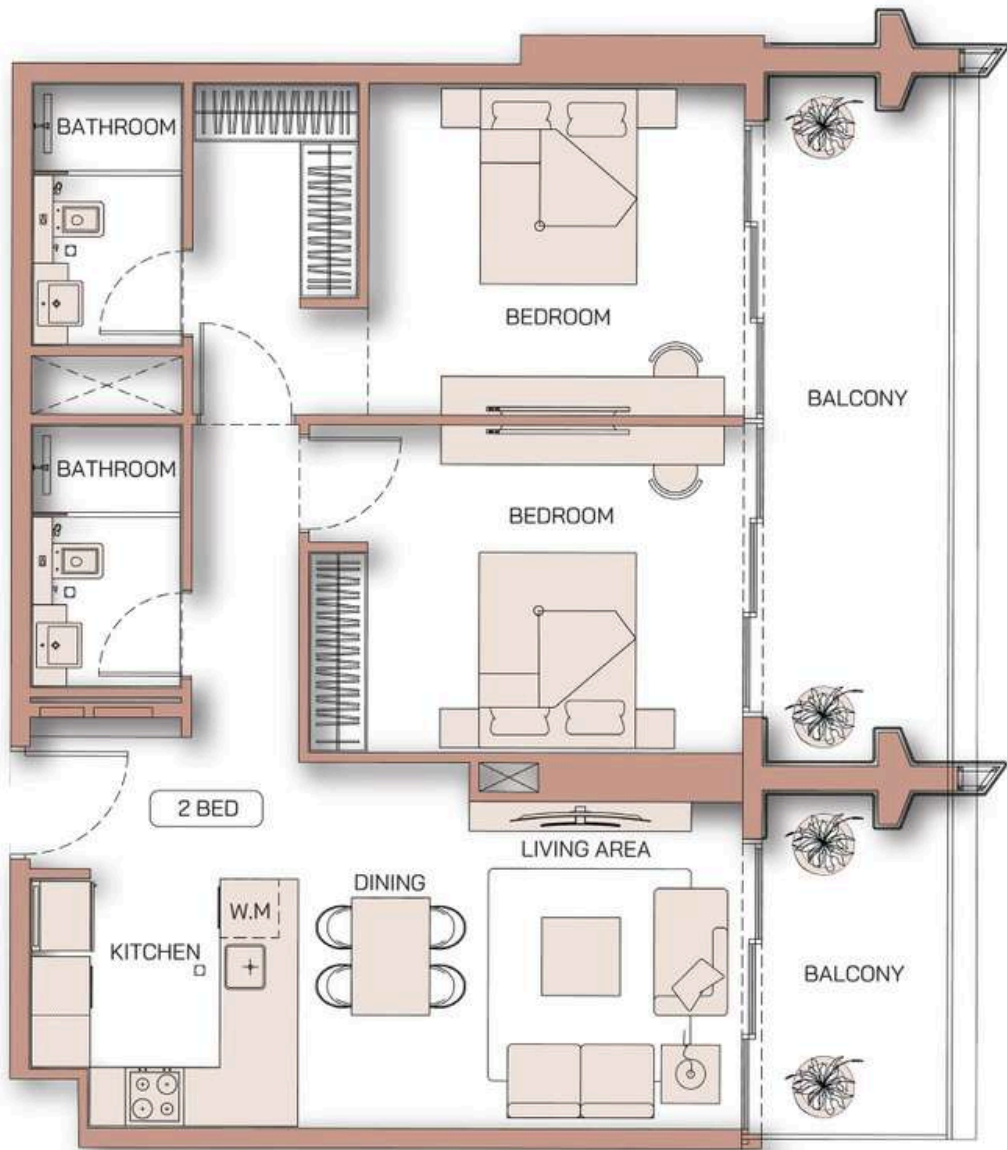


2 BEDROOM
TYPE 04

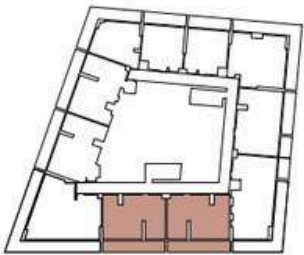


AREA	SQ. M	SQ. FT
SUITE AREA	81.08 m ²	872.74 ft ²
BALCONY AREA	21.73 m ²	233.90 ft ²
TOTAL UNIT AREA	102.81 m ²	1106.64 ft ²

FLAT DESIGN COMPONENTS			
M. BATHROOM	4 m ²	LIVING & DINING	16 m ²
M. BEDROOM	19 m ²	KITCHEN	7 m ²
BATHROOM	4 m ²	CORRIDOR	4 m ²
BEDROOM	15 m ²	FOYER	5 m ²

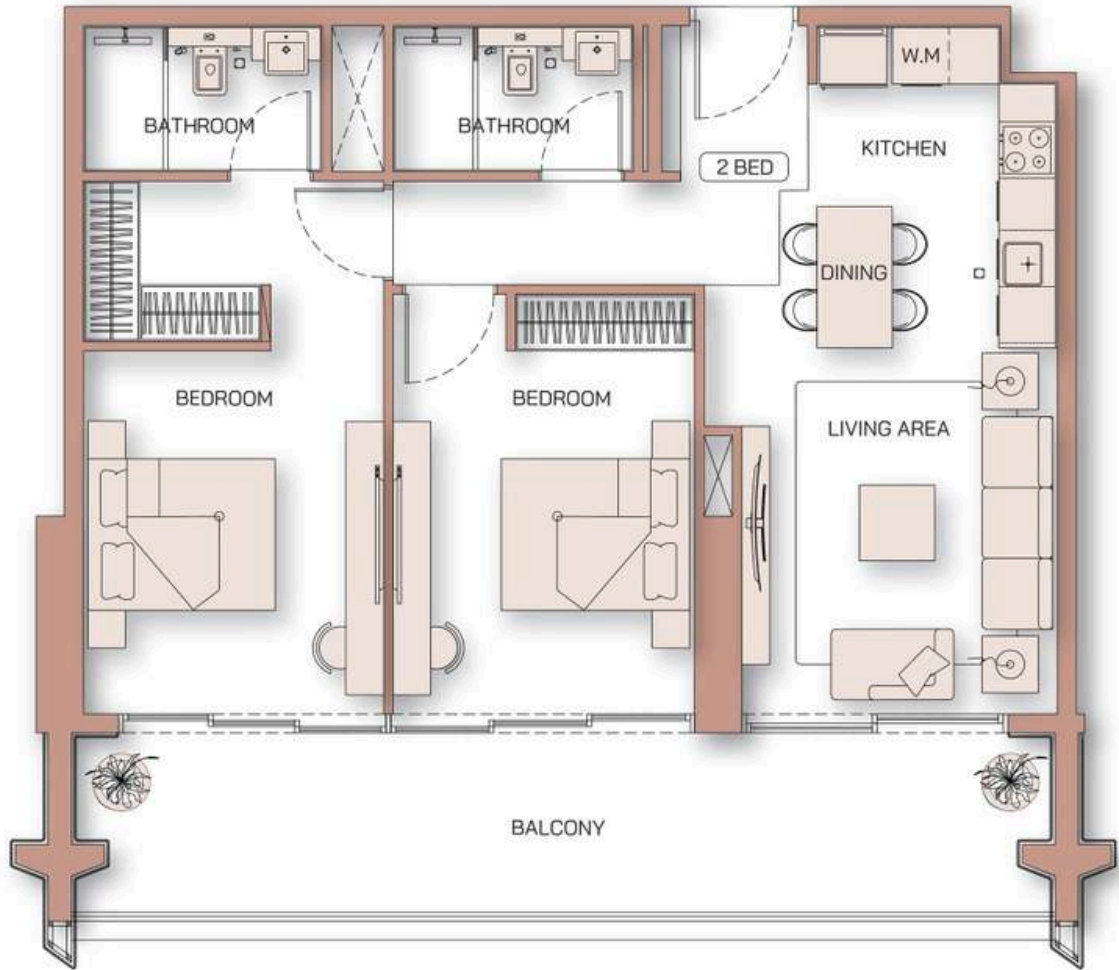


2 BEDROOM
TYPE 05



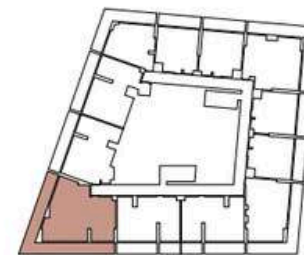
AREA	SQ. M	SQ. FT
SUITE AREA	78.49 m ²	844.86 ft ²
BALCONY AREA	21.14 m ²	227.55 ft ²
TOTAL UNIT AREA	99.63 m ²	1072.41 ft ²

FLAT DESIGN COMPONENTS			
M. BATHROOM	4 m ²	LIVING	12 m ²
M. BEDROOM	18 m ²	KITCHEN & DINING	11 m ²
BATHROOM	4 m ²	CORRIDOR	8 m ²
BEDROOM	14 m ²		



THREE BEDROOM

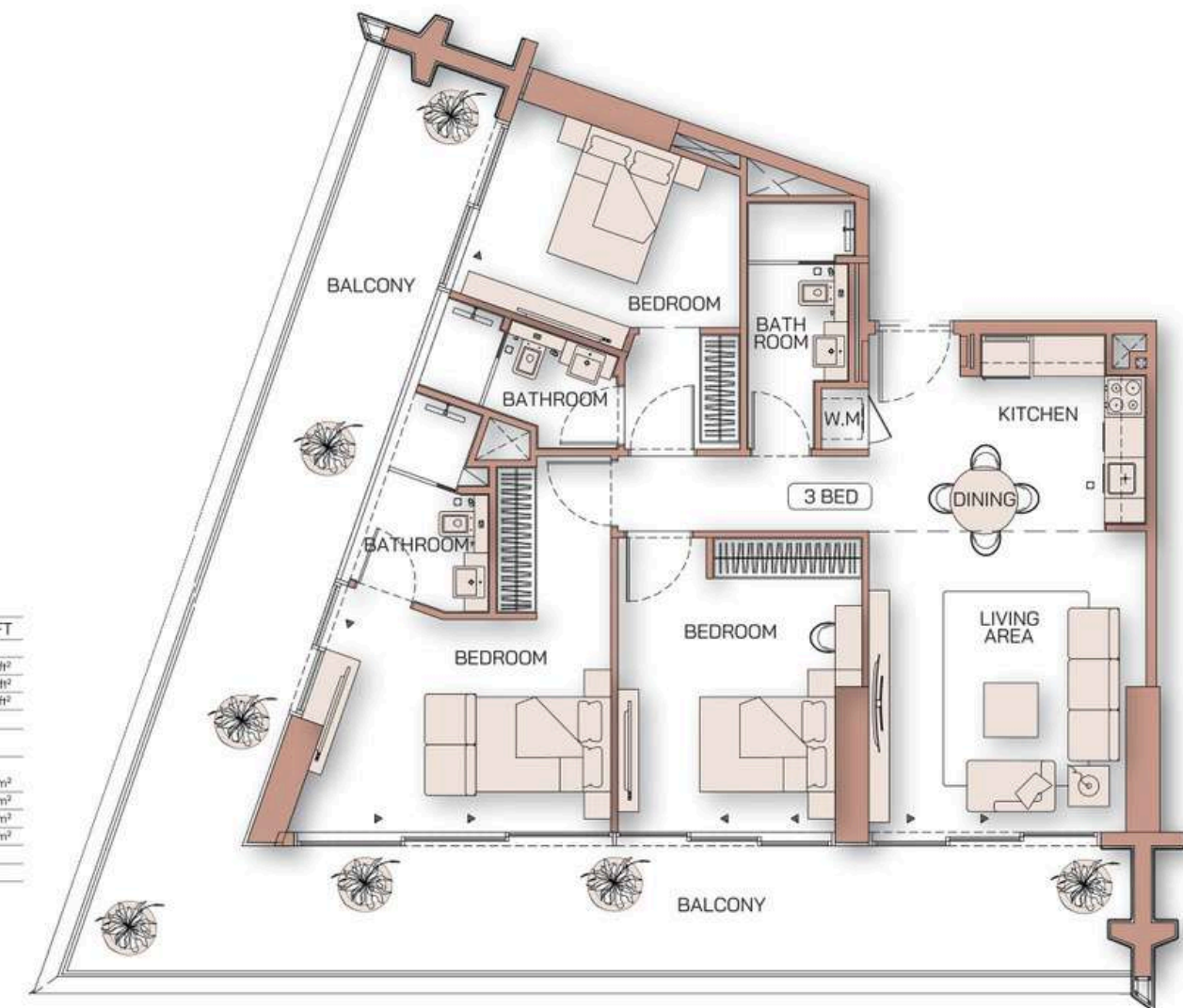
3 BEDROOM TYPE 01



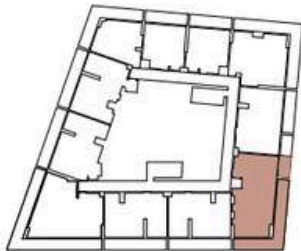
AREA	SQ. M	SQ. FT
SUITE AREA	104.78 m ²	1127.84 ft ²
BALCONY AREA	54.97 m ²	591.69 ft ²
TOTAL UNIT AREA	159.75 m ²	1719.53 ft ²

FLAT DESIGN COMPONENTS

M. BATHROOM	4 m ²	LIVING	17 m ²
M. BEDROOM	14 m ²	KITCHEN & DINING	8 m ²
BATHROOM	5 m ²	CORRIDOR	7 m ²
BEDROOM	18 m ²	LAUNDRY	1 m ²
BATHROOM	5 m ²		
BEDROOM	15 m ²		

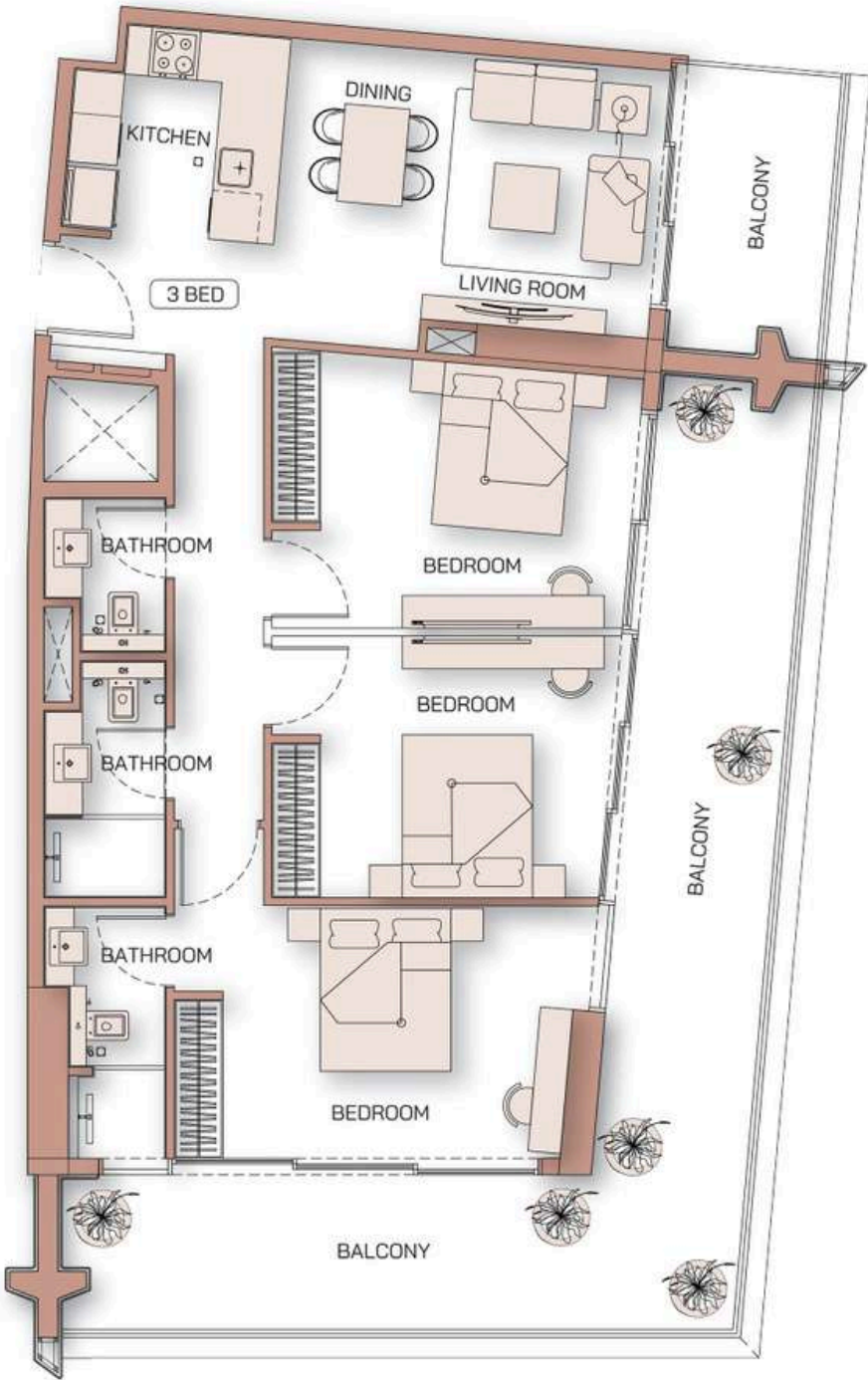


3 BEDROOM
TYPE 02



AREA	SQ. M	SQ. FT
SUITE AREA	97.64 m ²	1050.99 ft ²
BALCONY AREA	43.87 m ²	472.21 ft ²
TOTAL UNIT AREA	141.51 m ²	1523.20 ft ²

FLAT DESIGN COMPONENTS			
M. BATHROOM	4 m ²	LIVING & DINING	16 m ²
M. BEDROOM	16 m ²	KITCHEN	7 m ²
BATHROOM	4 m ²	CORRIDOR	10 m ²
BEDROOM	13 m ²		
BEDROOM	15 m ²		
WC	3 m ²		





Where Prestige Meets Property



At Majara Luxury Real Estate L.L.C., we redefine the art of luxury living. Based in the heart of the UAE, we specialize in curating exceptional real estate experiences tailored to the needs of discerning investors, end-users, and global clientele.



With a refined portfolio of premium properties across all seven Emirates, our expertise lies in both off-plan and ready-to-move assets, offering opportunities that blend architectural excellence with investment potential.



We are more than just property consultants & we are partners in your journey to finding the perfect home, investment, or lifestyle. Driven by integrity, market insight, and personalized service, Majara stands as a trusted name in an ever-evolving market.

Contact Us :

Phone: +971564452803

Email: info@majararealestate.com

<https://majararealestate.com/>