

# Mercedes-Benz Places

---

**Mercedes-Benz Place – Iconic Living, Dubai Downtown.**

# MAJARA LUXURY REAL ESTATE LLC

Head Office Level 36-01, Po Box :124382 , Trade Center 1, Sheikh Zayed Road , Burj Al Salam Tower Dubai UAE

**Experience Mercedes-Benz Place at Dubai Downtown,  
Exclusively Presented by Majara**



**Luxury, reimagined through Sensual Purity,  
beauty beyond the ordinary.**

True to Sensual Purity, we bring to life environments that are  
visually captivating and emotionally engaging





# A glimpse of the future, resonating from afar

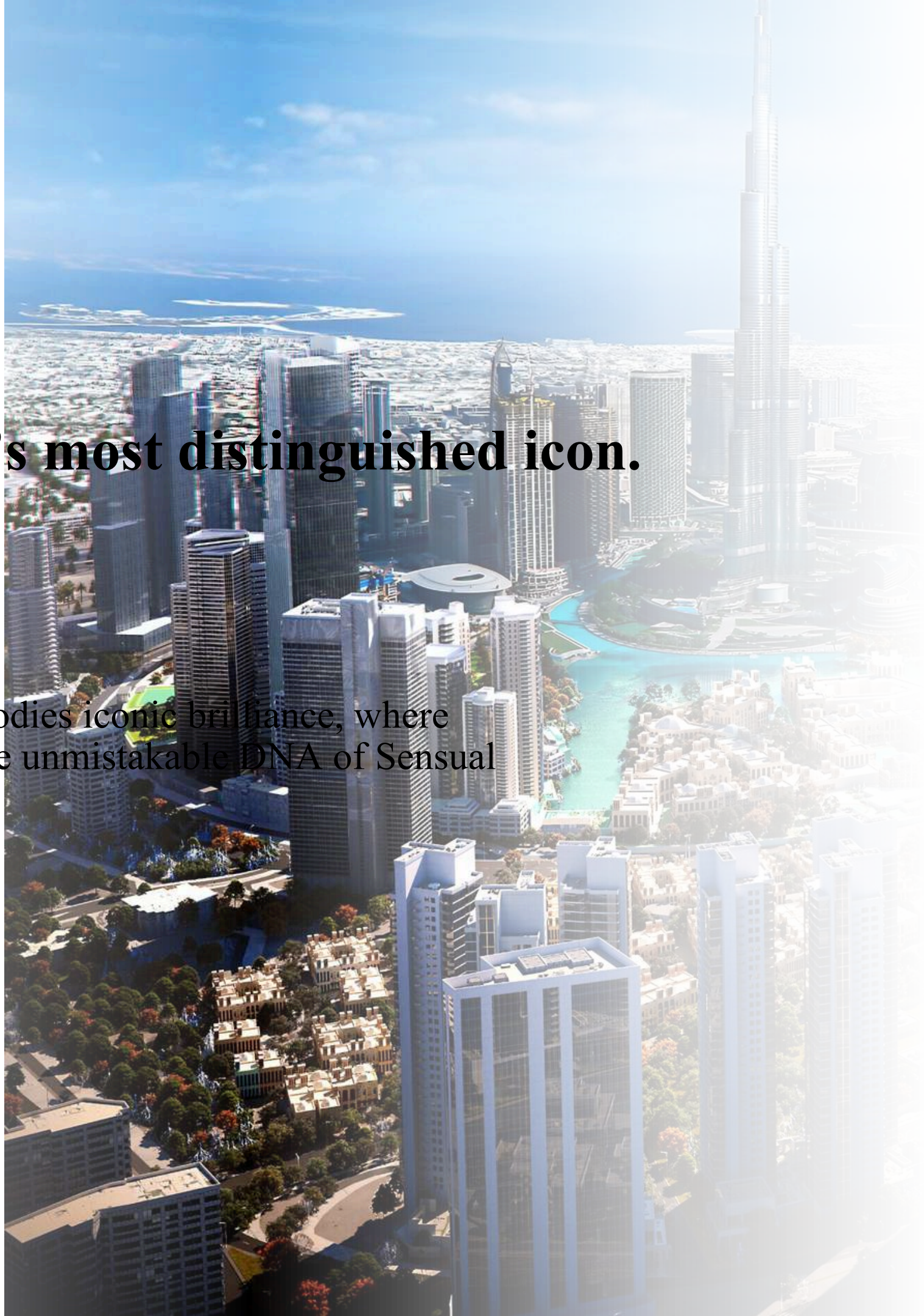
Introducing Mercedes-Benz Places: a gateway to extraordinary experiences, where intelligence meets emotion, glamour embraces simplicity, and historic legacies inspire a future of limitless possibilities





**The city skyline's most distinguished icon.**

Mercedes-Benz Places embodies iconic brilliance, where outstanding design meets the unmistakable DNA of Sensual Purity.





# A testament to innovative craftsmanship

An iconic architectural landmark, the hyper-tower merges diverse design languages with exquisite precision. The interplay of intricate lines and the radiant Mercedes-Benz star creates a living embodiment of revolutionary craftsmanship.





A definitive expression of unmatched elegance







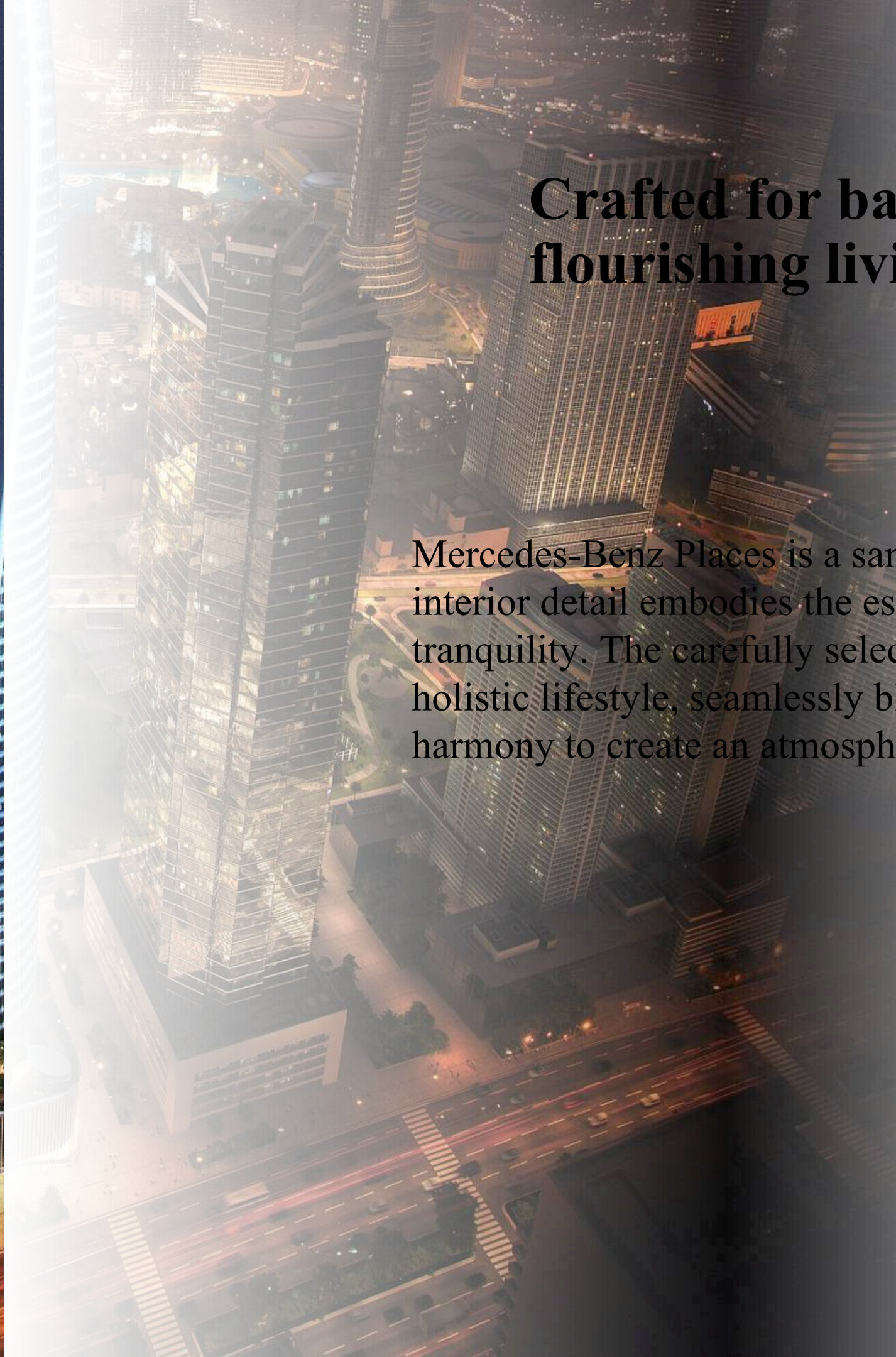
An evocative journey through the heart of the  
Hyper-Tower





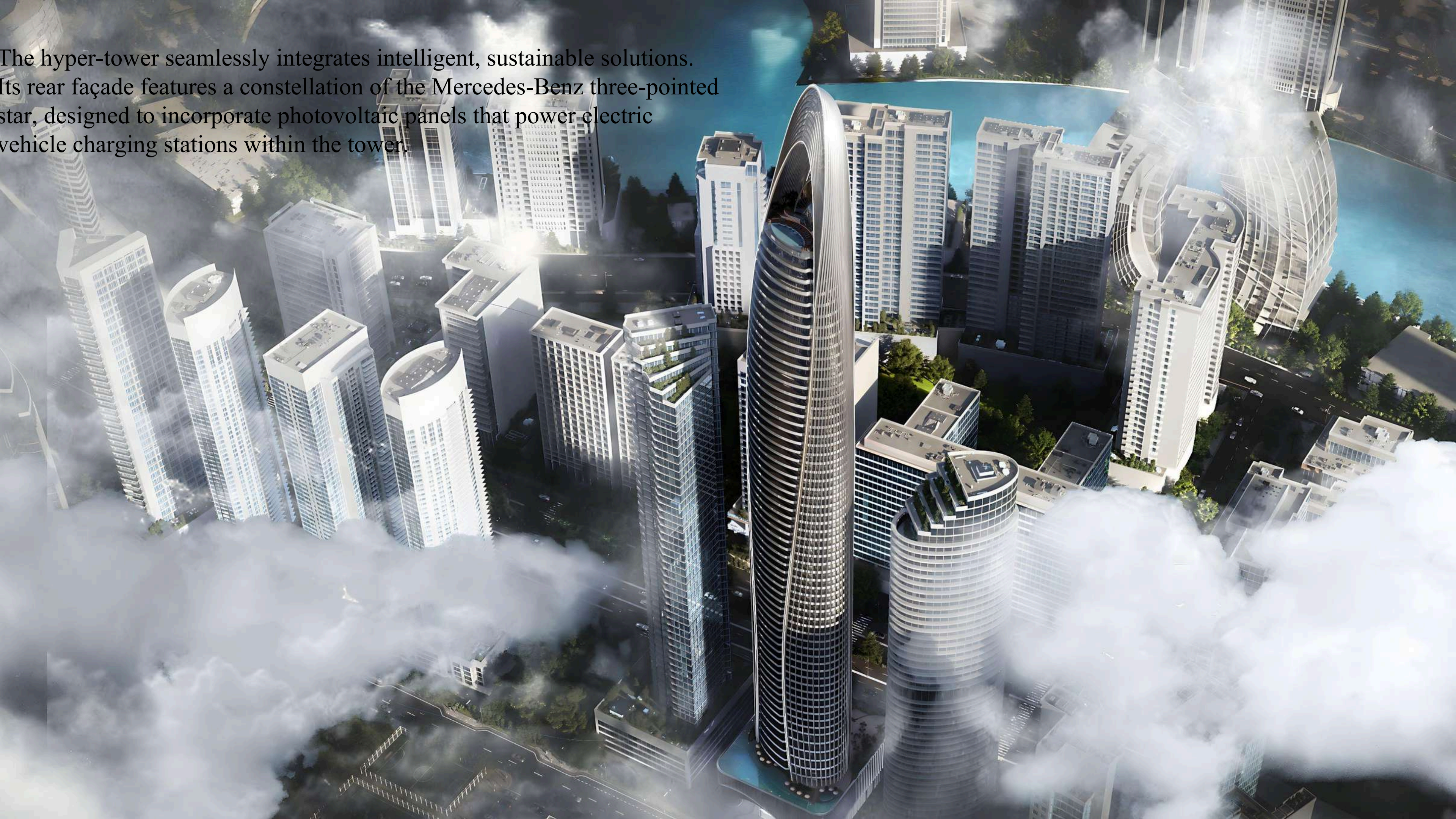
## **Crafted for balanced and flourishing living**

Mercedes-Benz Places is a sanctuary of design, where every interior detail embodies the essence of wholeness and tranquility. The carefully selected hues evoke the spirit of a holistic lifestyle, seamlessly blending elegance with harmony to create an atmosphere of serene sophistication.





The hyper-tower seamlessly integrates intelligent, sustainable solutions.  
Its rear façade features a constellation of the Mercedes-Benz three-pointed star, designed to incorporate photovoltaic panels that power electric vehicle charging stations within the tower.











Mercedes-Benz Places











# Table of contents

01

Design Philosophy

02

Project Brief

03

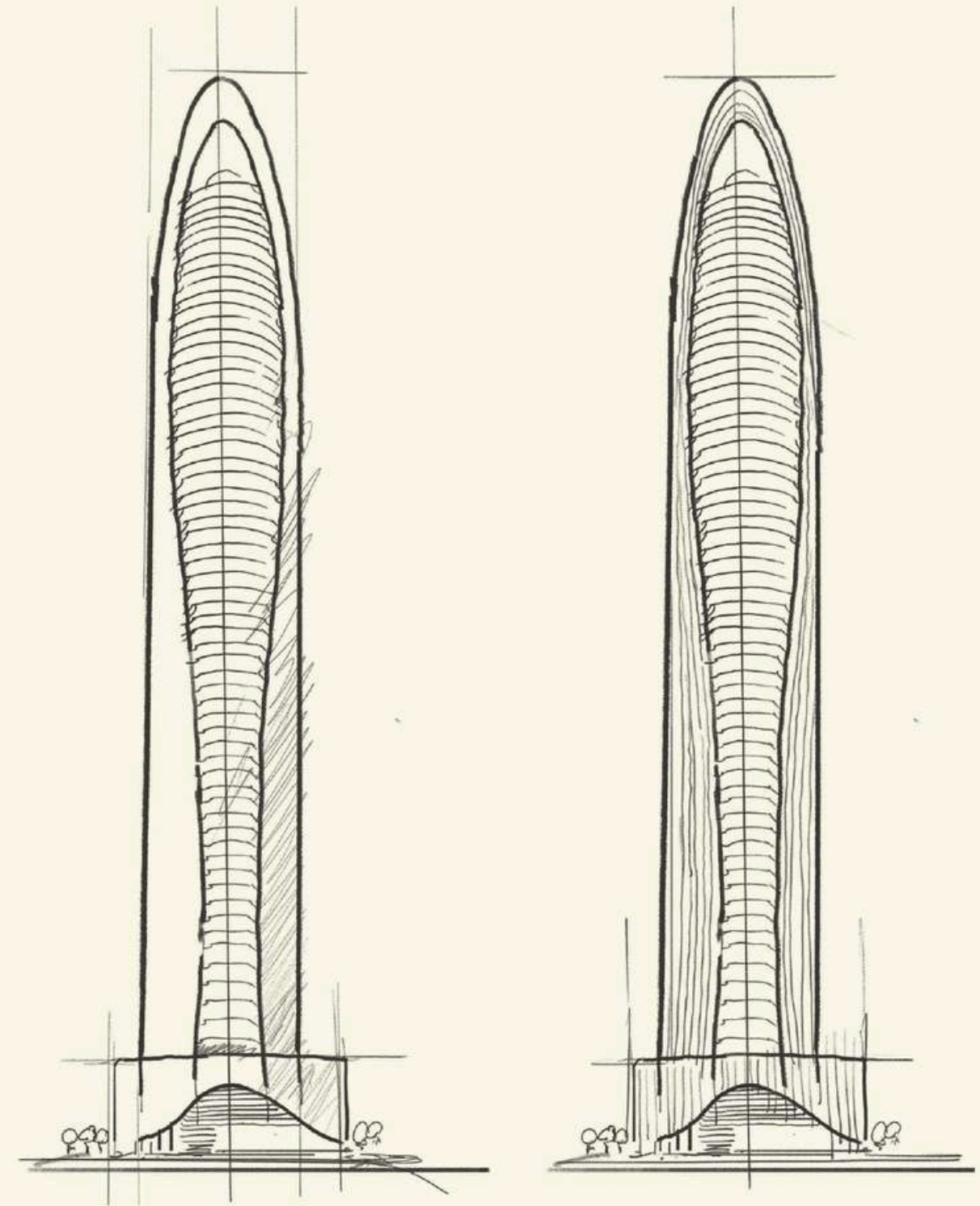
Design Details

04

Project Layouts

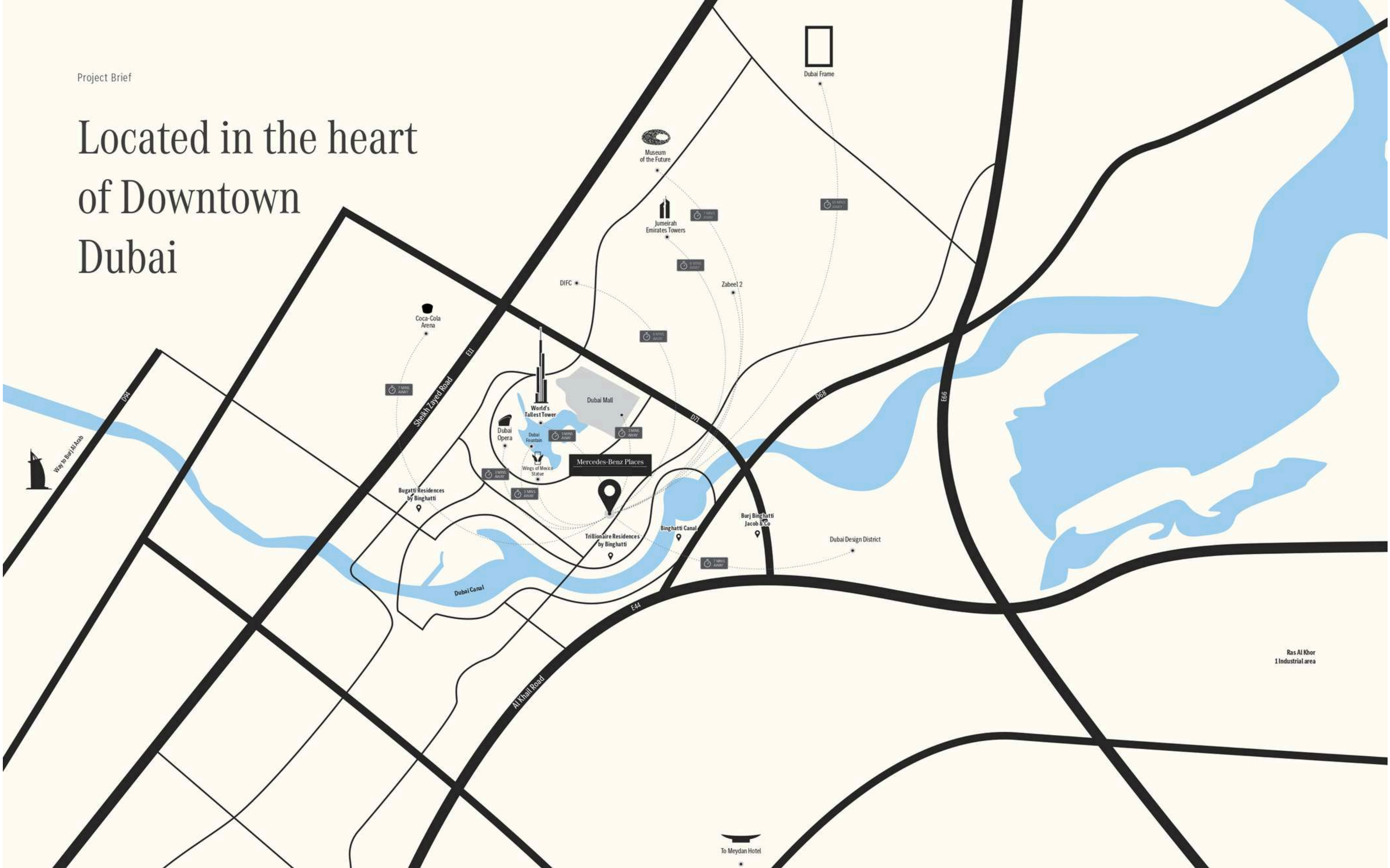
05

Penthouse Layouts





# Located in the heart of Downtown Dubai





# Unobstructed views to Dubai's Burj Khalifa

JUMEIRAH PUBLIC BEACH  
7.7 KM | 15 MINUTES

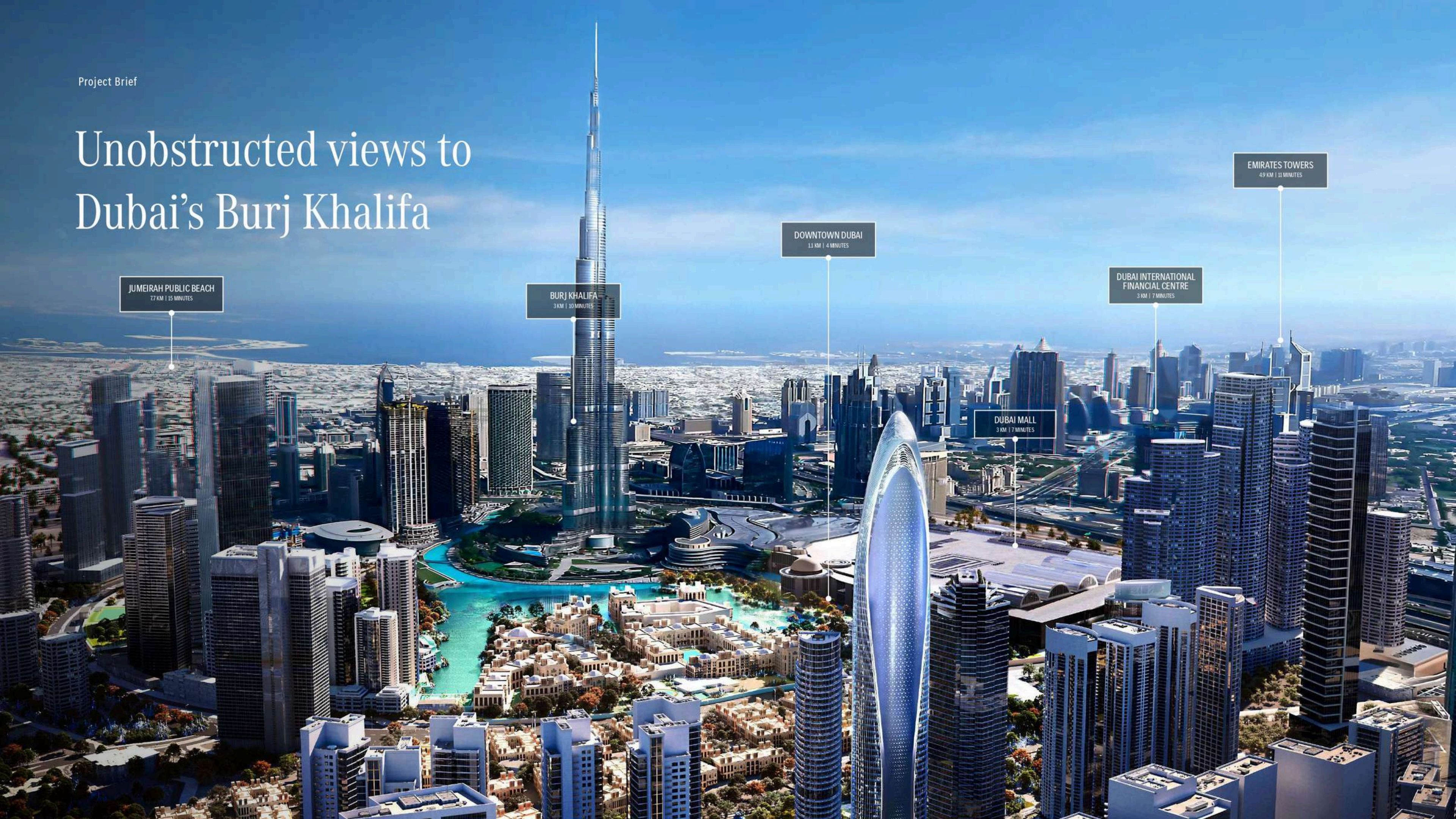
BURJ KHALIFA  
3 KM | 10 MINUTES

DOWNTOWN DUBAI  
1.1 KM | 4 MINUTES

DUBAI MALL  
3 KM | 7 MINUTES

DUBAI INTERNATIONAL  
FINANCIAL CENTRE  
3 KM | 7 MINUTES

EMIRATES TOWERS  
4.9 KM | 11 MINUTES





# Project Facts

Project name

Mercedes-Benz Places

Property type

Residential Hyper-Tower

Suite Types (Level 12 to 52)

**The Mercedes-Benz Pagoda Suite**

2 Bedroom | Level 12-31 (140 - 170 sq.m)

**The Grand Mercedes Suite**

3 Bedroom | Level 34-52 (200 - 215 sq.m)

Penthouses (level 55-66)

**The Mercedes-Benz  
Vision One Eleven Penthouse**

4 Bedroom Penthouse | Level 55-58 (245 - 280 sq.m)

**The Mercedes-Benz Gullwing Penthouse**

5 Bedroom Penthouse | Level 59-61 (623-667 sq.m)

**The Mercedes-Benz  
Vision EQ Silver Arrow Penthouse**

Duplex Penthouse | Level 62-63 (1160 sq.m)

**The Mercedes-Benz  
Uhlenhaut Coupé Penthouse**

Ownership

Freehold

Location

Downtown Dubai

Total number of floors

(3B + G + 5P + 65 Floors)

Number of mechanical floors

6

Total Number of residential floors

51

Total number of amenities floors

3 + HC

Ceiling height

4.2 m (Slab to slab)

Total number of units

150

Building height

341 M

Unit type

Furnished / Unfurnished





# Exclusive features and services



SOLAR PHOTOVOLTAIC  
TECHNOLOGY



LEED  
CERTIFICATION\*



PENTHOUSES  
PRIVATE PARKING



ACOUSTIC  
SYSTEM



SMART  
SYSTEM



SPA  
SERVICE



SKY INFINITY  
POOL



PRIVATE  
POOL



PODIUM  
POOL



GYM



CONCIERGE  
SERVICE



PARKING  
ACCESS CARD



FOOD &  
BEVERAGE

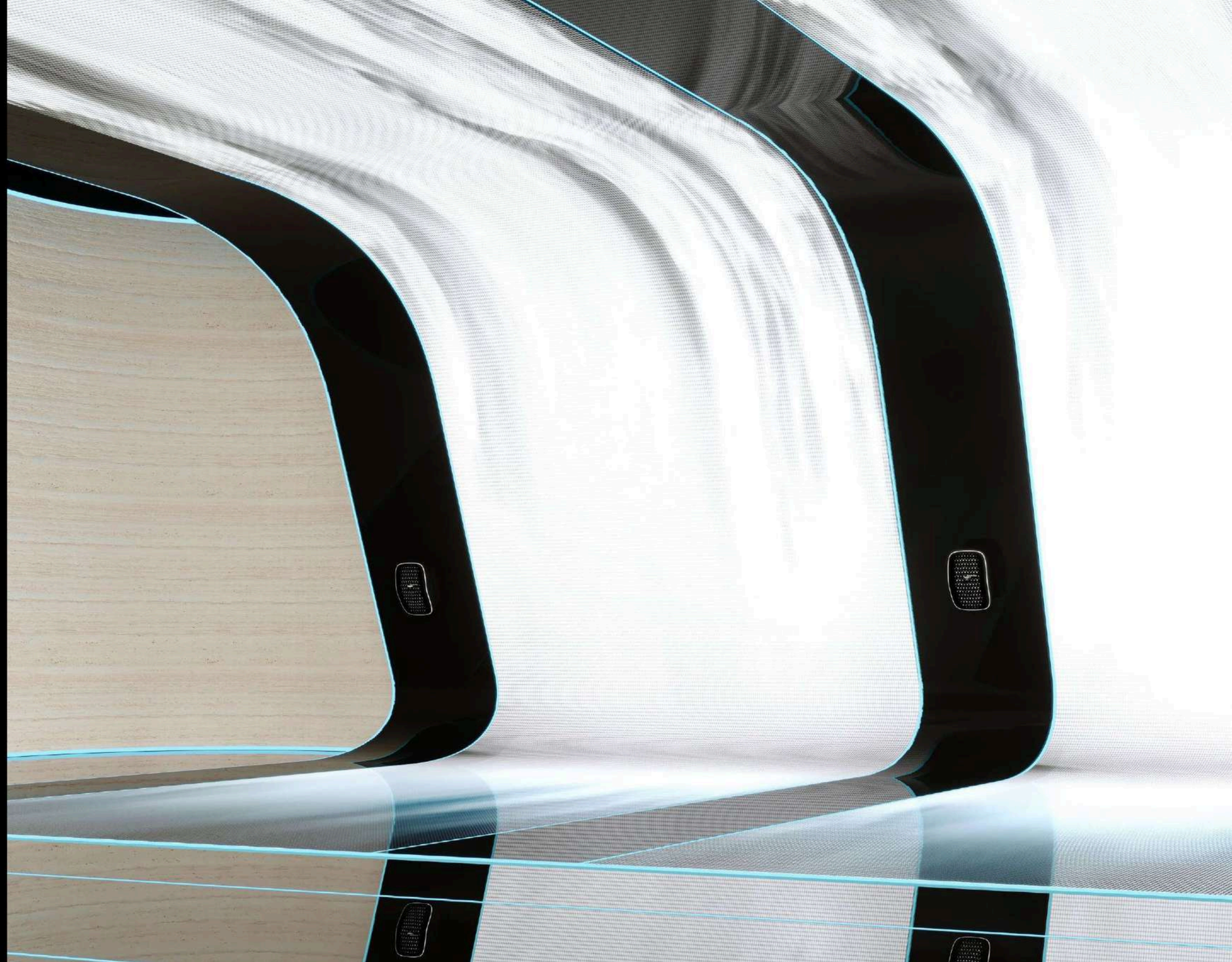


VALET  
SERVICE



HOUSE  
KEEPING

\*The Mercedes-Benz Places | Bingham is aiming to hold a LEED Qualification.





# From history to futuristic





Project Layouts

# The Mercedes-Benz Pagoda Suite

2 Bedroom Unit

Named after the renowned Mercedes-Benz Pagoda,  
a symbol of a craftsmanship that is both bold and humble  
in its nature.

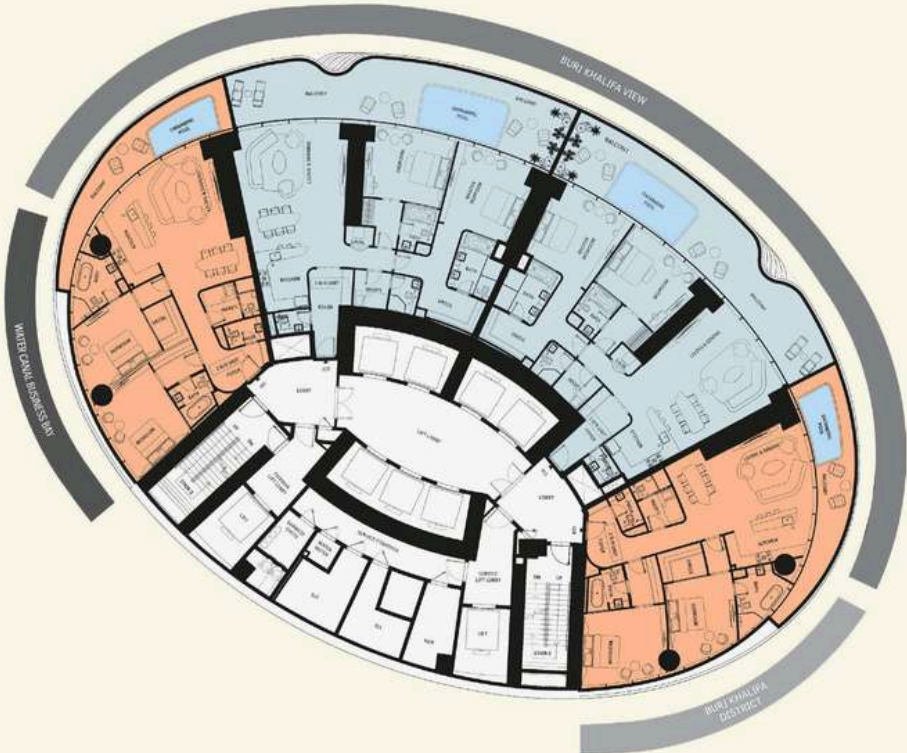




Project Layouts:

# The Mercedes-Benz Pagoda Suite

2 Bedroom Unit



VIEW ANALYSIS  
© BURJ KHALIFA - BURJ KHALIFA DISTRICT  
© BURJ KHALIFA DISTRICT  
© WATER CANAL - BUSINESS BAY

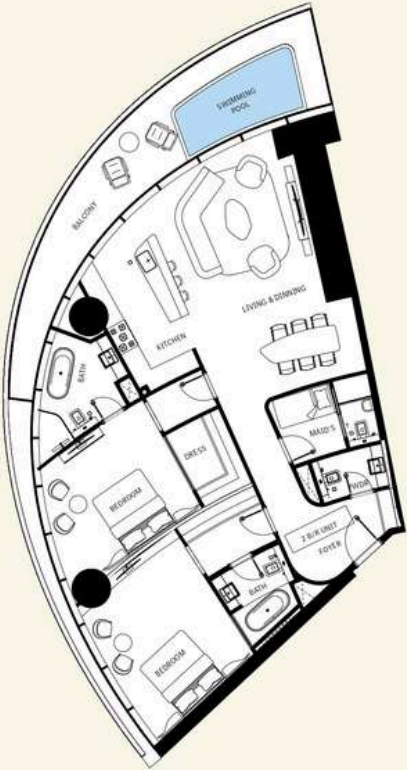
Project Layouts:

# The Mercedes-Benz Pagoda Suite

2 Bedroom Unit | Type 1-A

AREA	SQ.M	SQ.FT
Suitly Area	142 m <sup>2</sup>	1529 ft <sup>2</sup>
Balcony Area	29 m <sup>2</sup>	308 ft <sup>2</sup>
Total Unit Area	171 m <sup>2</sup>	1837 ft <sup>2</sup>

FLAT DESIGN COMPONENTS	
Living & Dining	37 m <sup>2</sup>
Bedroom 1	12 m <sup>2</sup>
Bedroom 2	17 m <sup>2</sup>
Open	11 m <sup>2</sup>
Kitchen	11 m <sup>2</sup>
Bath 1	6 m <sup>2</sup>
Bath 2	5 m <sup>2</sup>
Dress 1	5 m <sup>2</sup>
Dress 2	4 m <sup>2</sup>
Mail	4 m <sup>2</sup>
PWD	3 m <sup>2</sup>
Entr	2 m <sup>2</sup>
Lobby	2 m <sup>2</sup>





Project Layouts:

# The Mercedes-Benz Pagoda Suite

2 Bedroom Unit | Type 1  
Isometric View

- 1 LIVING LOUNGE
- 2 MASTER BEDROOM
- 3 BEDROOM
- 4 FOYER
- 5 KITCHEN
- 6 BATHROOM SUITE
- 7 BATHROOM SUITE
- 8 WALK-IN CLOSET
- 9 HELPER BEDROOM
- 10 WC
- 11 SWIMMING POOL
- 12 BALCONY



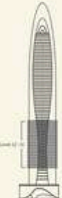
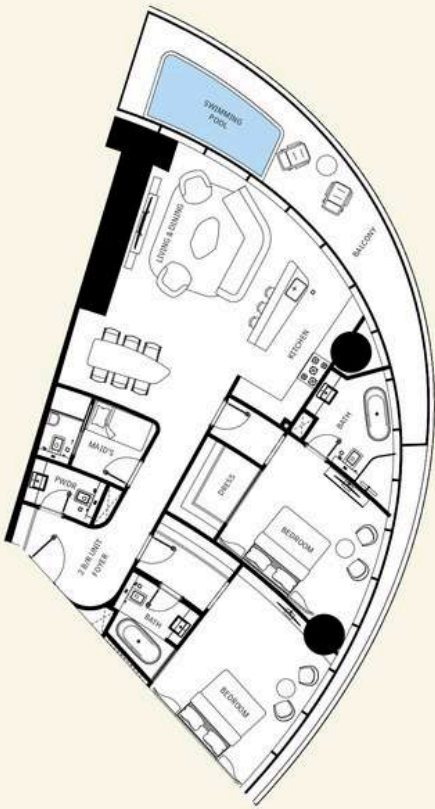
Project Layouts:

# The Mercedes-Benz Pagoda Suite

2 Bedroom Unit | Type 1-B

AREA	SQ.M	SQ.FT
Suitly Area	142 m <sup>2</sup>	1529 ft <sup>2</sup>
Balcony Area	29 m <sup>2</sup>	308 ft <sup>2</sup>
Total Unit Area	171 m <sup>2</sup>	1837 ft <sup>2</sup>

FLAT DESIGN COMPONENTS	
Living & Dining	37 m <sup>2</sup>
Bedroom 1	22 m <sup>2</sup>
Bedroom 2	17 m <sup>2</sup>
Foyer	11 m <sup>2</sup>
Kitchen	11 m <sup>2</sup>
Bath 1	8 m <sup>2</sup>
Bath 2	5 m <sup>2</sup>
Dress 1	5 m <sup>2</sup>
Dress 2	4 m <sup>2</sup>
Mail	4 m <sup>2</sup>
PWDs	3 m <sup>2</sup>
Club	2 m <sup>2</sup>
Lobby	2 m <sup>2</sup>





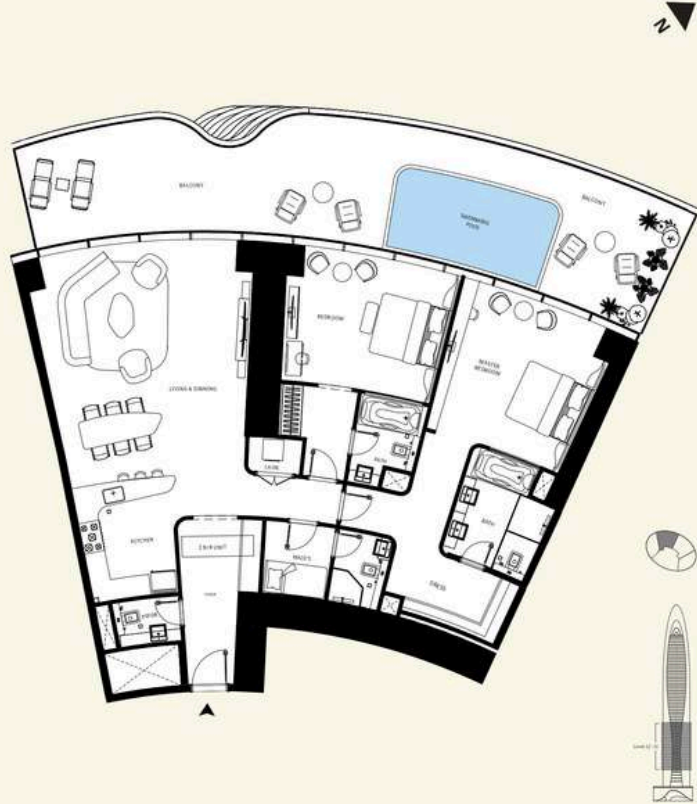
Project Layouts:

# The Mercedes-Benz Pagoda Suite

2 Bedroom Unit | Type 2-A

AREA	SQ.M	SQ.FT
Suite Area	169 m <sup>2</sup>	1814 ft <sup>2</sup>
Balcony Area	67 m <sup>2</sup>	720 ft <sup>2</sup>
Total Unit Area	235 m <sup>2</sup>	2534 ft <sup>2</sup>

FLAT DESIGN COMPONENTS	
Living & Dining	42 m <sup>2</sup>
Bedroom 1	20m <sup>2</sup>
Bedroom 2	19 m <sup>2</sup>
Foyer	9 m <sup>2</sup>
Kitchen	10 m <sup>2</sup>
Bath 1	8 m <sup>2</sup>
Bath 2	4 m <sup>2</sup>
Dress 1	7 m <sup>2</sup>
Dress 2	5 m <sup>2</sup>
Maids	4 m <sup>2</sup>
POW&R	2 m <sup>2</sup>
Bath	3 m <sup>2</sup>
Lobby	3 m <sup>2</sup>



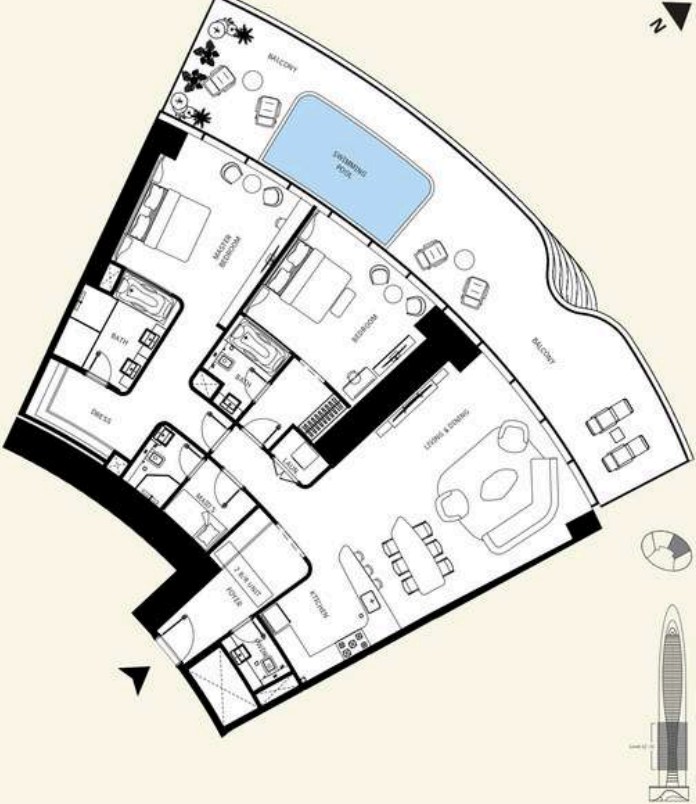
Project Layouts:

# The Mercedes-Benz Pagoda Suite

2 Bedroom Unit | Type 2-B

AREA	SQ.M	SQ.FT
Suite Area	169 m <sup>2</sup>	1814 ft <sup>2</sup>
Balcony Area	67 m <sup>2</sup>	720 ft <sup>2</sup>
Total Unit Area	235 m <sup>2</sup>	2534 ft <sup>2</sup>

FLAT DESIGN COMPONENTS	
Living & Dining	42 m <sup>2</sup>
Bedroom 1	20m <sup>2</sup>
Bedroom 2	19 m <sup>2</sup>
Foyer	9 m <sup>2</sup>
Kitchen	10 m <sup>2</sup>
Bath 1	8 m <sup>2</sup>
Bath 2	4 m <sup>2</sup>
Dress 1	7 m <sup>2</sup>
Dress 2	5 m <sup>2</sup>
Maids	4 m <sup>2</sup>
POW&R	2 m <sup>2</sup>
Bath	3 m <sup>2</sup>
Lobby	3 m <sup>2</sup>





# The Mercedes-Benz Pagoda Suite

2 Bedroom Unit | Type 2  
Isometric View



- 1 LIVING LOUNGE
- 2 BEDROOM
- 3 MASTER BEDROOM
- 4 FOYER
- 5 KITCHEN
- 6 BATHROOM SUITE
- 7 BATHROOM SUITE
- 8 WALK-IN CLOSET
- 9 HELPER BEDROOM
- 10 WC
- 11 SWIMMING POOL
- 12 BALCONY
- 13 LAUNDRY





Expert curation



Project Layouts

# The Grand Mercedes Suite

3 Bedroom Unit

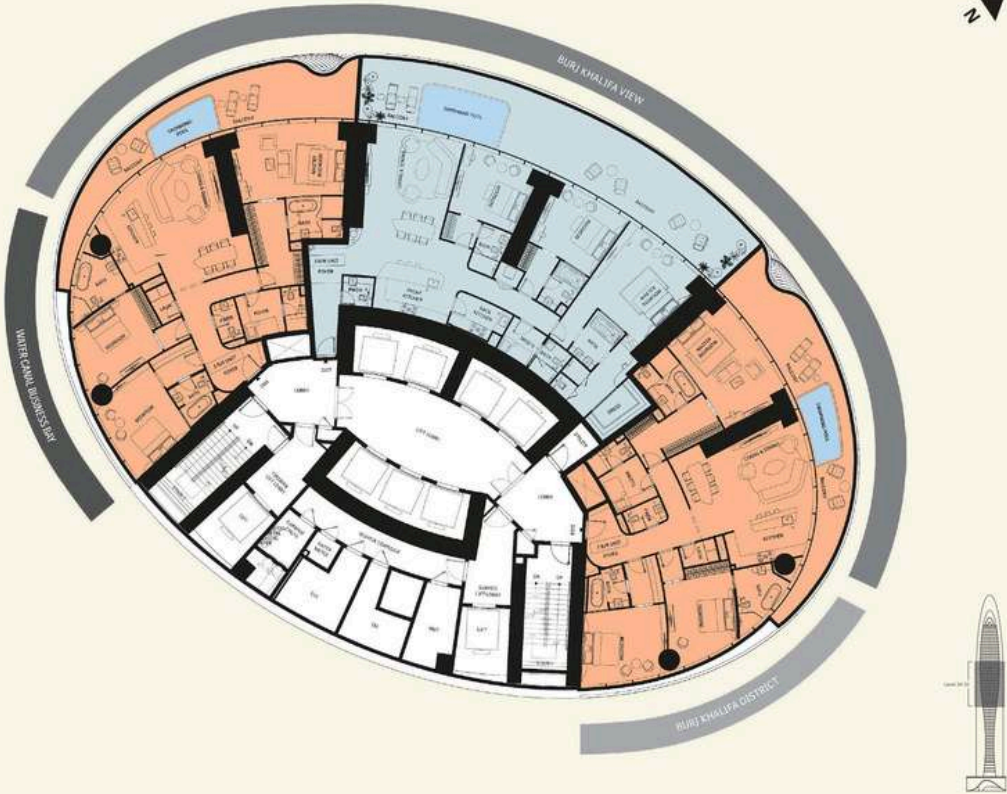




Project Layouts:

# The Grand Mercedes Suite

3 Bedroom Unit



VIEW ANALYSIS  
● BURJ KHALIFA - BURJ KHALIFA DISTRICT  
● BURJ KHALIFA DISTRICT  
● WATER CANAL - BUSINESS BAY

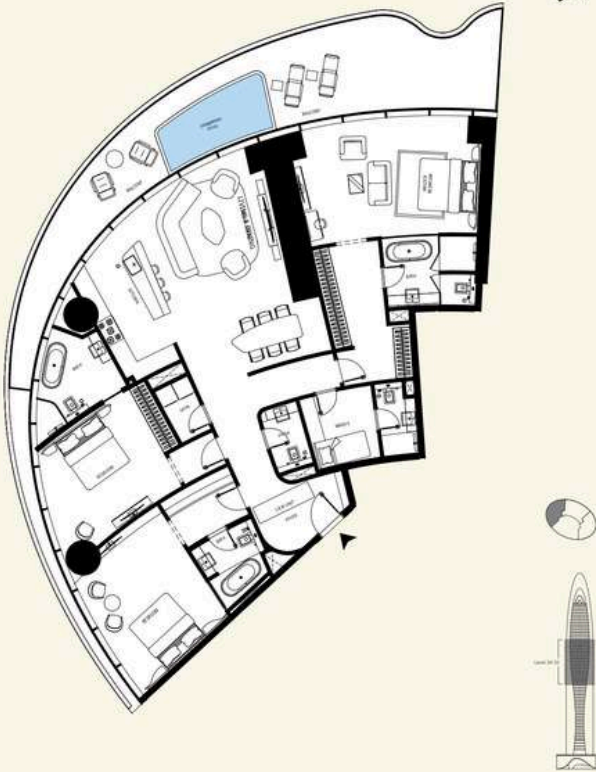
Project Layouts:

# The Grand Mercedes Suite

3 Bedroom Unit | Type 1-A

AREA	SQ.M	SQ.FT
Suite Area	201 m <sup>2</sup>	2166 ft <sup>2</sup>
Balcony Area	51 m <sup>2</sup>	544 ft <sup>2</sup>
Total Unit Area	252 m <sup>2</sup>	2710 ft <sup>2</sup>

FLAT DESIGN COMPONENTS	
Living & Dining	35 m <sup>2</sup>
Master Bedroom	26 m <sup>2</sup>
Bedroom 1	19 m <sup>2</sup>
Bedroom 2	19 m <sup>2</sup>
Foyer	16 m <sup>2</sup>
Dress	11 m <sup>2</sup>
Kitchen	11 m <sup>2</sup>
Bath 1	8 m <sup>2</sup>
Bath 2	7 m <sup>2</sup>
Marl	6 m <sup>2</sup>
Bath	5 m <sup>2</sup>
Dress	5 m <sup>2</sup>
Bath	3 m <sup>2</sup>
PWDH	3 m <sup>2</sup>
Laundry	2 m <sup>2</sup>
Lobby	2 m <sup>2</sup>





Project Layouts:

# The Grand Mercedes Suite

3 Bedroom Unit | Type 1  
Isometric View



- 1 LIVING LOUNGE
- 2 KITCHEN
- 3 BEDROOM
- 4 BATHROOM SUITE
- 5 LAUNDRY
- 6 BEDROOM
- 7 BATHROOM SUITE
- 8 FOYER
- 9 WC
- 10 HELPER BEDROOM
- 11 MASTER BEDROOM
- 12 MASTER BATHROOM
- 13 SWIMMING POOL
- 14 BALCONY

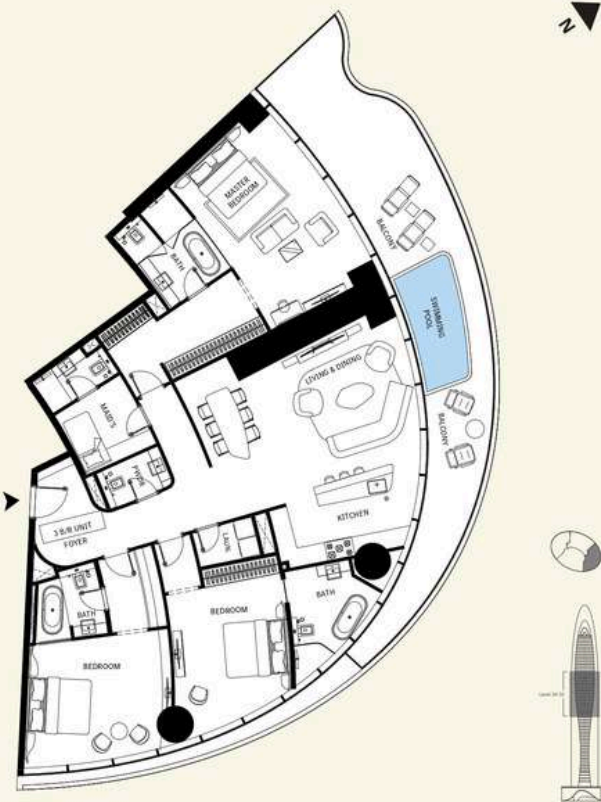
Project Layouts:

# The Grand Mercedes Suite

3 Bedroom Unit | Type 1-B

AREA	SQ.M	SQ.FT
Suite Area	201 m <sup>2</sup>	2166 ft <sup>2</sup>
Balcony Area	50 m <sup>2</sup>	543 ft <sup>2</sup>
Total Unit Area	252 m <sup>2</sup>	2709 ft <sup>2</sup>

FLAT DESIGN COMPONENTS	
Living & Dining	35 m <sup>2</sup>
Master Bedroom	26 m <sup>2</sup>
Bedroom 1	19 m <sup>2</sup>
Bedroom 2	19 m <sup>2</sup>
Foyer	16 m <sup>2</sup>
Dress	11 m <sup>2</sup>
Kitchen	11 m <sup>2</sup>
Bath 1	8 m <sup>2</sup>
Bath 2	7 m <sup>2</sup>
Master	6 m <sup>2</sup>
Bath	5 m <sup>2</sup>
Dress	5 m <sup>2</sup>
Bath	3 m <sup>2</sup>
PWDH	3 m <sup>2</sup>
Laundry	2 m <sup>2</sup>
Lobby	2 m <sup>2</sup>





Project Layouts:

# The Grand Mercedes Suite

3 Bedroom Unit | Type 2  
Isometric View

- 1 LIVING LOUNGE
- 2 BEDROOM
- 3 BATHROOM SUITE
- 4 BEDROOM
- 5 BATHROOM SUITE
- 6 MASTER BEDROOM
- 7 MASTER BATHROOM
- 8 WALK-IN CLOSET
- 9 HELPER BEDROOM
- 10 FRONT KITCHEN
- 11 BACK KITCHEN
- 12 FOYER
- 13 SWIMMING POOL
- 14 BALCONY



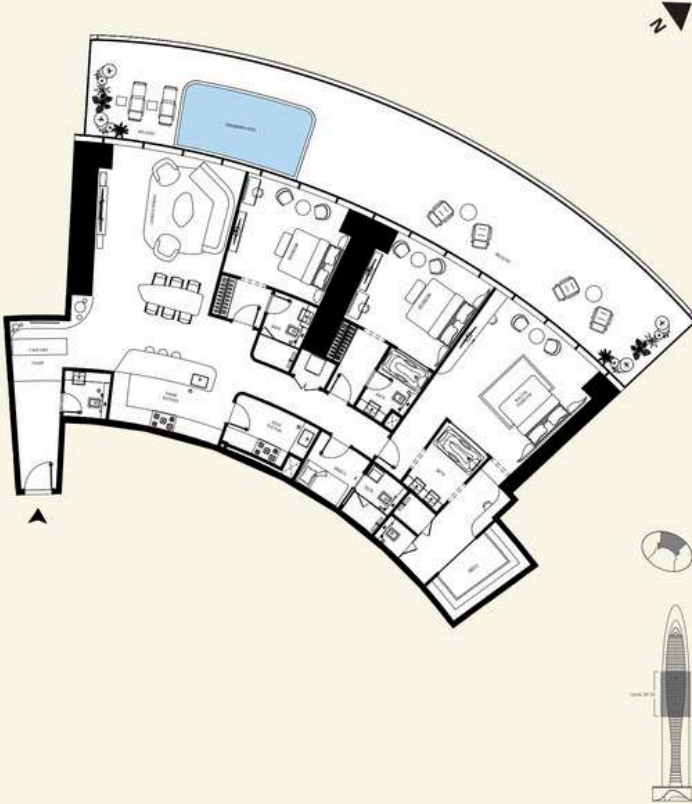
Project Layouts:

# The Grand Mercedes Suite

3 Bedroom Unit | Type 2

AREA	SQ.M	SQ.FT
Suite Area	215 m <sup>2</sup>	2319 ft <sup>2</sup>
Balcony Area	90 m <sup>2</sup>	966 ft <sup>2</sup>
Total Unit Area	305 m <sup>2</sup>	3285 ft <sup>2</sup>

FLAT DESIGN COMPONENTS	
Living & Dining	40 m <sup>2</sup>
Master Bedroom	22 m <sup>2</sup>
Bedroom 1	17 m <sup>2</sup>
Bedroom 2	16 m <sup>2</sup>
Foyer	11 m <sup>2</sup>
Lobby	11 m <sup>2</sup>
Kitchen	10 m <sup>2</sup>
Bath	8 m <sup>2</sup>
Dress	7 m <sup>2</sup>
Lobby	7 m <sup>2</sup>
Back Kitchen	6 m <sup>2</sup>
Bath	4 m <sup>2</sup>
Bath	4 m <sup>2</sup>
Dress	4 m <sup>2</sup>
Maid	4 m <sup>2</sup>
Bath	3 m <sup>2</sup>
Dress	3 m <sup>2</sup>
Powdr	3 m <sup>2</sup>
Laundry	1 m <sup>2</sup>





Project Layouts

Elegance and purity  
in our meticulously  
crafted spaces









Penthouse Layouts

# The Mercedes-Benz Vision One-Eleven Penthouse

## 4 Bedroom Unit

Named after the one and only Mercedes-Benz Vision One-Eleven: iconic, legendary, and indisputably game-changing.

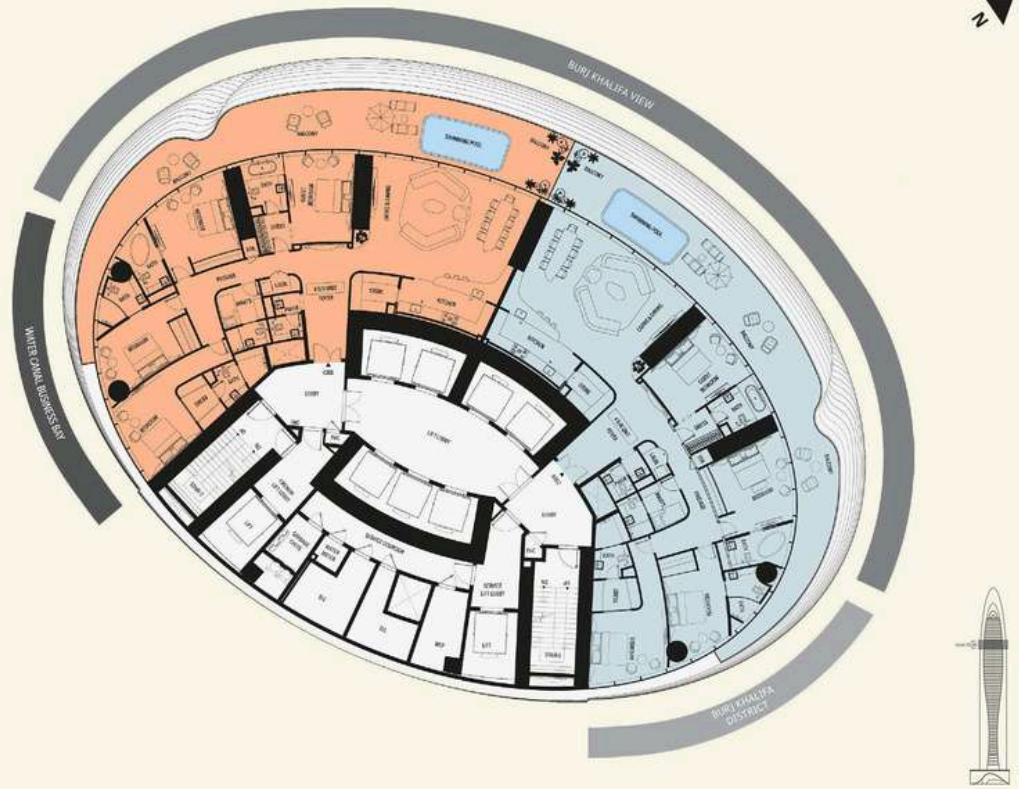




Penthouse Layouts

# The Mercedes-Benz Vision One-Eleven Penthouse

4 Bedroom Unit



VIEW ANALYSIS  
● BURJ KHALIFA - BURJ KHALIFA DISTRICT  
● BURJ KHALIFA DISTRICT  
● WATER CANAL - BUSINESS BAY

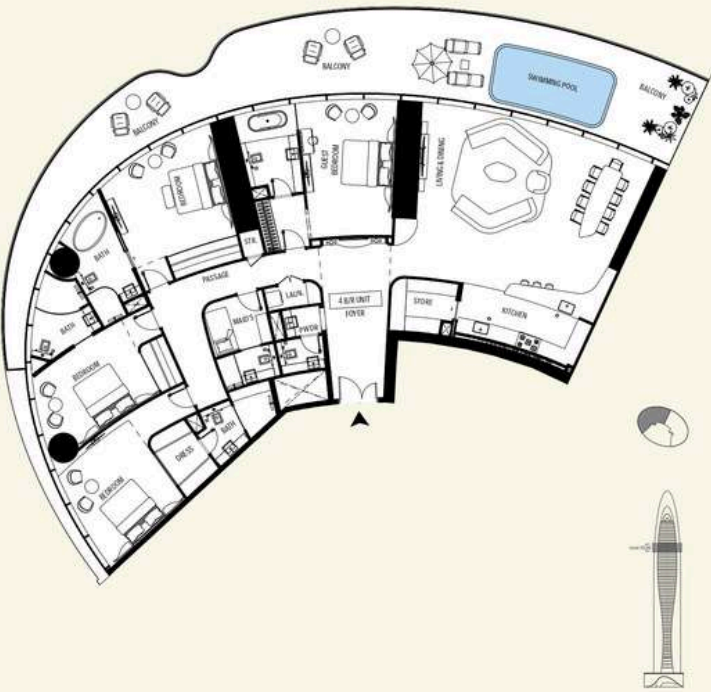
Penthouse Layouts

# The Mercedes-Benz Vision One-Eleven Penthouse

4 Bedroom Unit | Type 1-A

AREA	SQ.M	SQ.FT
Suite Area	278 m <sup>2</sup>	2995 ft <sup>2</sup>
Balcony Area	94 m <sup>2</sup>	1013 ft <sup>2</sup>
Total Unit Area	372 m <sup>2</sup>	4007 ft <sup>2</sup>

FLAT DESIGN COMPONENTS	
LIVING & DINING	63 m <sup>2</sup>
BEDROOM	22 m <sup>2</sup>
GUEST BEDROOM	20 m <sup>2</sup>
BEDROOM	18 m <sup>2</sup>
BEDROOM	18 m <sup>2</sup>
POYER	18 m <sup>2</sup>
PASSAGE	18 m <sup>2</sup>
KITCHEN	10 m <sup>2</sup>
BATH	9 m <sup>2</sup>
BATH	8 m <sup>2</sup>
BATH	7 m <sup>2</sup>
BATH	6 m <sup>2</sup>
MAID	5 m <sup>2</sup>
STORE	5 m <sup>2</sup>
DRESS	4 m <sup>2</sup>
DRESS	3 m <sup>2</sup>
SALON	3 m <sup>2</sup>
DRESS	3 m <sup>2</sup>
LOBBY	3 m <sup>2</sup>
DRESS	2 m <sup>2</sup>
LAUN.	2 m <sup>2</sup>
POUR	2 m <sup>2</sup>
WASH	2 m <sup>2</sup>
LOBBY	1 m <sup>2</sup>
STORE	1 m <sup>2</sup>





Penthouse Layouts

# The Mercedes-Benz Vision One-Eleven Penthouse

4 Bedroom Unit | Type 1  
Isometric View

- 1 LIVING LOUNGE
- 2 BEDROOM
- 3 BEDROOM
- 4 BEDROOM
- 5 MASTER BEDROOM
- 6 BATHROOM SUITE
- 7 BATHROOM SUITE
- 8 BATHROOM SUITE
- 9 BATHROOM SUITE
- 10 FOYER
- 11 WC
- 12 KITCHEN
- 13 STORE
- 14 HELPER BEDROOM
- 15 SWIMMING POOL
- 16 BALCONY



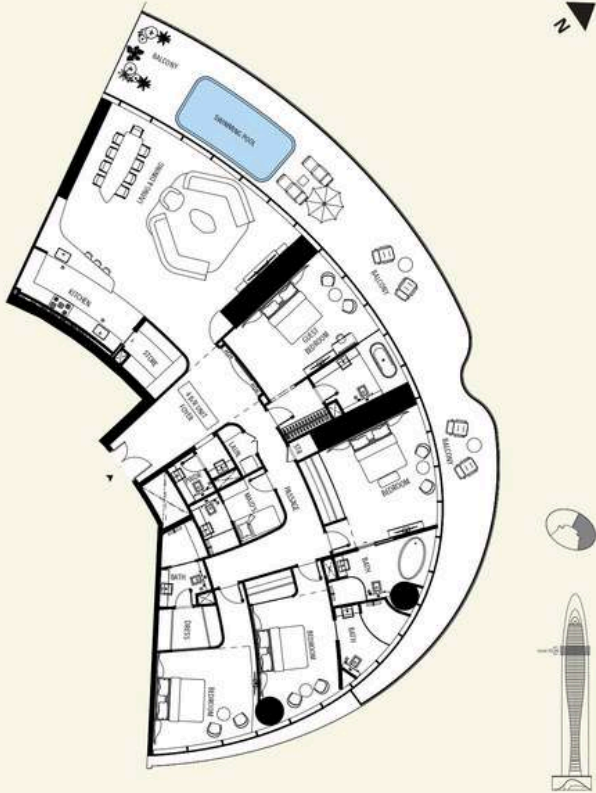
Penthouse Layouts

# The Mercedes-Benz Vision One-Eleven Penthouse

4 Bedroom Unit | Type 1-B

AREA	SQ.M	SQ.FT
Suite Area	278 m <sup>2</sup>	2995 ft <sup>2</sup>
Balcony Area	94 m <sup>2</sup>	1013 ft <sup>2</sup>
Total Unit Area	372 m <sup>2</sup>	4007 ft <sup>2</sup>

FLAT DESIGN COMPONENTS	
LIVING & DINING	63 m <sup>2</sup>
BEDROOM	22 m <sup>2</sup>
GUEST BEDROOM	22 m <sup>2</sup>
BEDROOM	18 m <sup>2</sup>
BEDROOM	18 m <sup>2</sup>
FOYER	18 m <sup>2</sup>
PASSAGE	18 m <sup>2</sup>
KITCHEN	10 m <sup>2</sup>
BATH	8 m <sup>2</sup>
BATH	8 m <sup>2</sup>
BATH	8 m <sup>2</sup>
BATH	8 m <sup>2</sup>
MAID	5 m <sup>2</sup>
STORE	5 m <sup>2</sup>
DRESS	4 m <sup>2</sup>
DRESS	3 m <sup>2</sup>
SATIN	3 m <sup>2</sup>
DRESS	3 m <sup>2</sup>
LOBBY	3 m <sup>2</sup>
DRESS	2 m <sup>2</sup>
LAUN.	2 m <sup>2</sup>
WASH	2 m <sup>2</sup>
LOBBY	1 m <sup>2</sup>
STORE	1 m <sup>2</sup>





# The Mercedes-Benz Gullwing Penthouse

## 5 Bedroom Penthouse

Named after the memorable Mercedes-Benz 300 SL Gullwing, the 5-bedroom penthouse manifests the same pre-eminent experience of the acclaimed automobile.

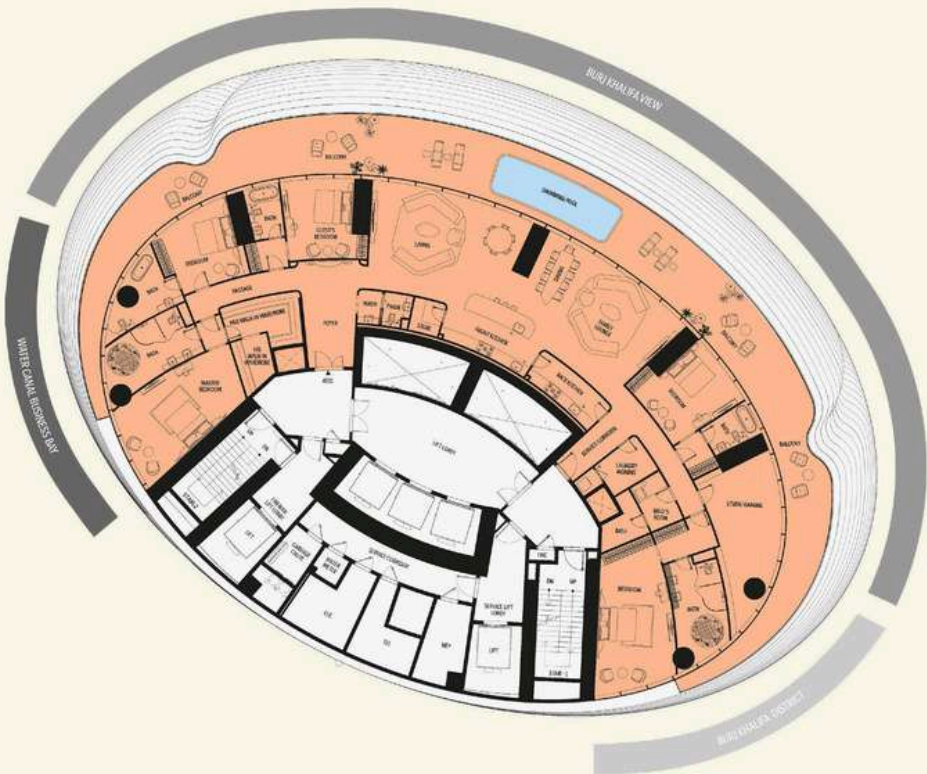




Penthouse Layouts

# The Mercedes-Benz Gullwing Penthouse

5 Bedroom | Penthouse

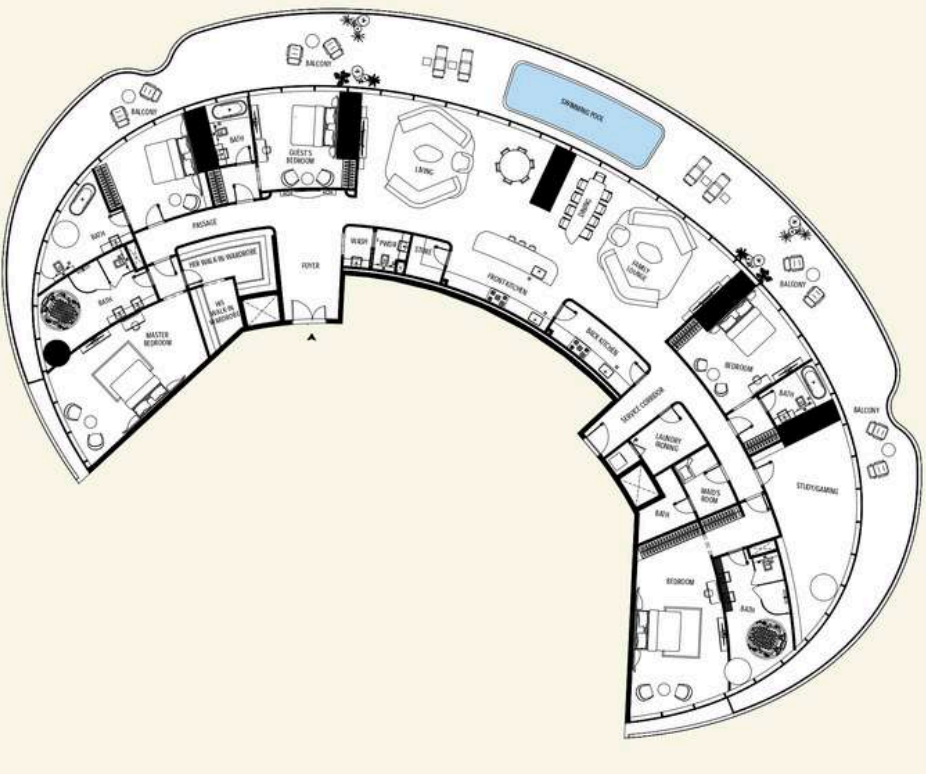


VIEW ANALYSIS  
● BURJ KHALIFA - BURJ KHALIFA DISTRICT  
● BURJ KHALIFA DISTRICT  
● WATER CANAL - BUSINESS BAY

Penthouse Layouts

# The Mercedes-Benz Gullwing Penthouse

5 Bedroom | Penthouse



AREA	SQ.M	SQ.FT
Suite Area	456 m²	4911 ft²
Balcony Area	184 m²	1980 ft²
Total Unit Area	640 m²	6891 ft²

FLAT DESIGN COMPONENTS	
LIVING	36 m²
FAMILY LOUNGE	38 m²
BEDROOM	38 m²
DINING	30 m²
MASTER BEDROOM	30 m²
STUDY / GAMING	29 m²
BEDROOM	28 m²
BEDROOM	28 m²
GUESTS BEDROOM	18 m²
FOYER	17 m²
SERVICE CORRIDOR	16 m²
BATH	15 m²
BATH	15 m²
BATH	15 m²
FRONT KITCHEN	10 m²
HIS WALK IN WARDROBE	9 m²
BACK KITCHEN	8 m²
PASSAGE	8 m²
BATH	6 m²
DRESS	6 m²
LAUNDRY DRESSING	6 m²
BATH	5 m²
HIS WALK IN WARDROBE	5 m²
MAID	5 m²
DRESS	3 m²
DRESS	3 m²
STORE	3 m²
LOBBY	2 m²
PORCH	2 m²
WASH	2 m²
W.C.	1 m²



# The Mercedes-Benz Gullwing Penthouse

5 Bedroom | Penthouse  
Isometric View

- 1 BEDROOM
- 2 BATHROOM SUITE
- 3 STUDY/GAMING
- 4 BATHROOM SUITE
- 5 BEDROOM
- 6 FAMILY LOUNGE
- 7 BALCONY
- 8 BACK KITCHEN
- 9 FRONT KITCHEN
- 10 DINING
- 11 LIVING
- 12 FOYER
- 13 HER WALK-IN WARDROBE
- 14 HIS WALK-IN WARDROBE
- 15 MASTER BEDROOM
- 16 MASTER BATHROOM
- 17 BEDROOM
- 18 BATHROOM SUITE
- 19 GUEST'S ROOM
- 20 BATHROOM SUITE
- 21 SWIMMING POOL





Penthouse Layouts

Characterized by  
phenomenal spaces



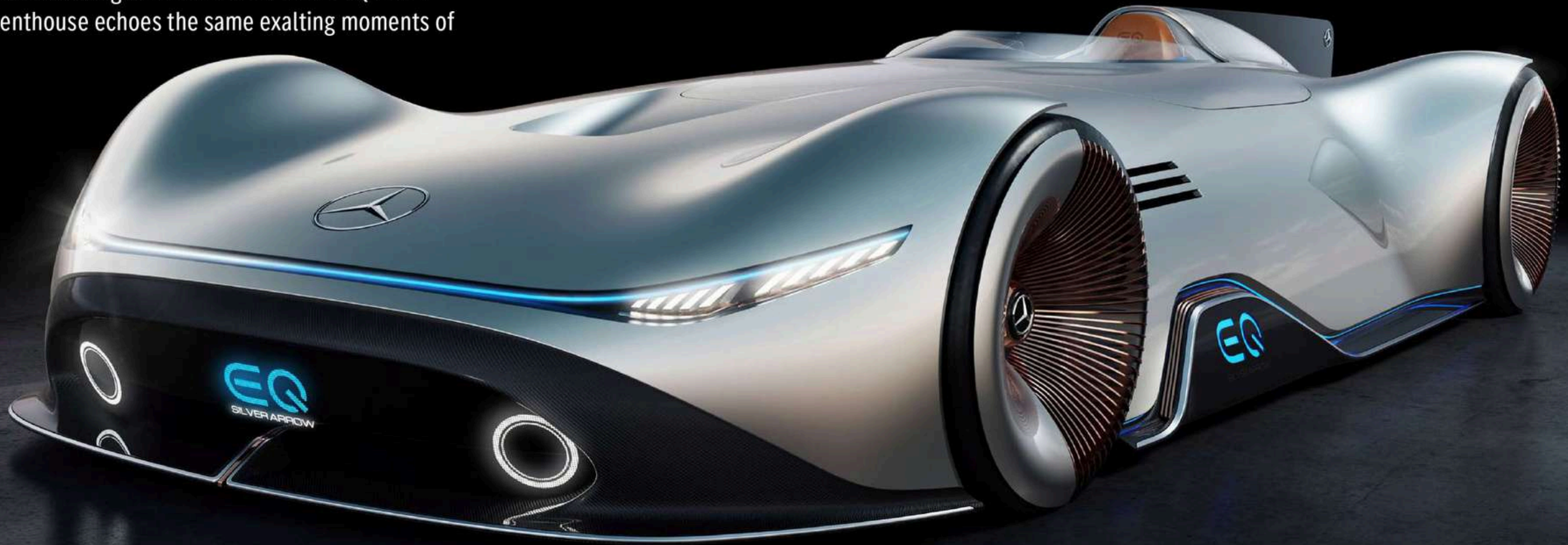


Penthouse Layouts

# The Mercedes-Benz Vision EQ Silver Arrow Penthouse

## The Duplex Penthouse

Named after the groundbreaking Mercedes-Benz Vision EQ Silver Arrow, the Duplex Penthouse echoes the same exalting moments of this legend.



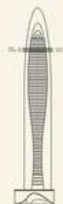
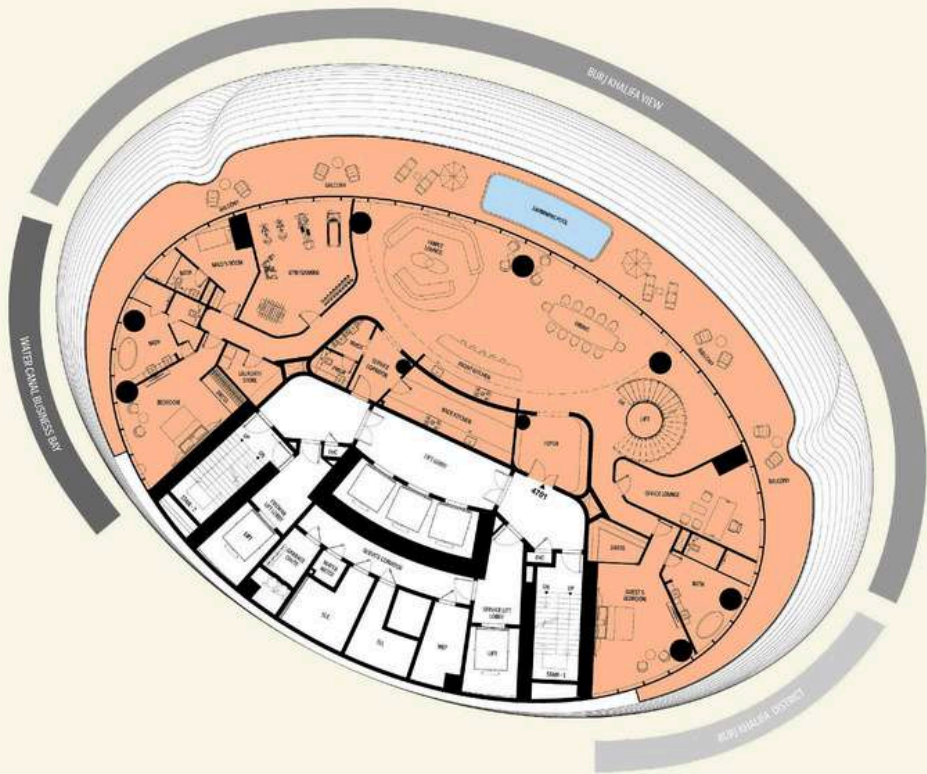


Penthouse Layouts

# The Mercedes-Benz Vision EQ Silver Arrow Penthouse

The Duplex Penthouse

VIEW ANALYSIS  
● BURJ KHALIFA - BURJ KHALIFA DISTRICT  
● BURJ KHALIFA DISTRICT  
● WATER CANAL - BUSINESS BAY



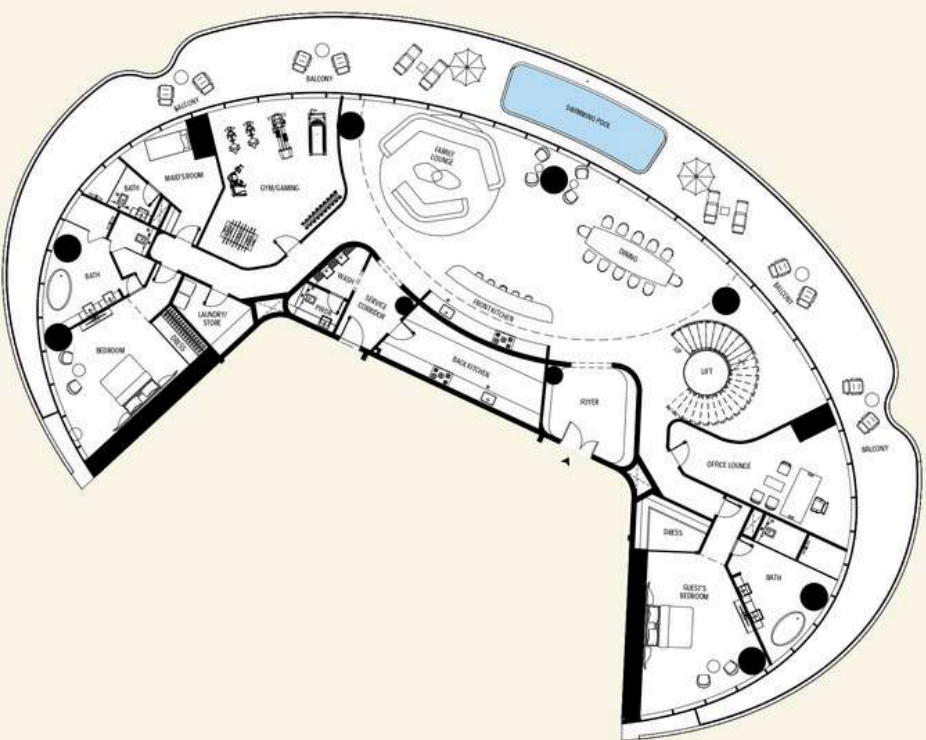
Penthouse Layouts

# The Mercedes-Benz Vision EQ Silver Arrow Penthouse

The Duplex Penthouse | Level 1

AREA	SQ.M	SQ.FT
Suite Area	457 m <sup>2</sup>	4923 ft <sup>2</sup>
Balcony Area	185 m <sup>2</sup>	1997 ft <sup>2</sup>
Total Unit Area	642 m <sup>2</sup>	6920 ft <sup>2</sup>

FLAT DESIGN COMPONENTS	
FAMILY LOUNGE	48 m <sup>2</sup>
LIVING	48 m <sup>2</sup>
GYM / GAMING	37 m <sup>2</sup>
STAIR LOBBY	23 m <sup>2</sup>
GUEST'S BEDROOM	29 m <sup>2</sup>
DINING	28 m <sup>2</sup>
OFFICE LOUNGE	27 m <sup>2</sup>
BEDROOM	24 m <sup>2</sup>
BATH	20 m <sup>2</sup>
BATH	19 m <sup>2</sup>
BACK KITCHEN	18 m <sup>2</sup>
COVER	18 m <sup>2</sup>
MALL'S ROOM	13 m <sup>2</sup>
PASSAGE	13 m <sup>2</sup>
FRONT KITCHEN	12 m <sup>2</sup>
PASSAGE	8 m <sup>2</sup>
LAUN / STORE	7 m <sup>2</sup>
SERVICE LOBBY	7 m <sup>2</sup>
DRESS	6 m <sup>2</sup>
BATH	5 m <sup>2</sup>
DRESS	3 m <sup>2</sup>
LIFT	3 m <sup>2</sup>
LOBBY	3 m <sup>2</sup>
LOBBY	3 m <sup>2</sup>
PRIV	3 m <sup>2</sup>
WASH	3 m <sup>2</sup>





Penthouse Layouts

The Mercedes-Benz  
Vision EQ Silver Arrow  
Penthouse

The Duplex Penthouse | Level 1  
Isometric View

- 1 GUEST'S BEDROOM
- 2 WASHROOM
- 3 BATHROOM SUITE
- 4 DINING
- 5 WALK IN WARDROBE
- 6 FAMILY LOUNGE
- 7 OFFICE LOUNGE
- 8 CRYM/CAMING
- 9 BALCONY
- 10 HELPER BEDROOM
- 11 LIFT
- 12 BATHROOM SUITE
- 13 FOYER
- 14 WALK IN WARDROBE
- 15 BACK KITCHEN
- 16 BEDROOM
- 17 FRONT KITCHEN
- 18 BATHROOM SUITE
- 19 SERVICE CORRIDOR
- 20 LAUNDRY/STONE
- 21 WC
- 22 SWIMMING POOL



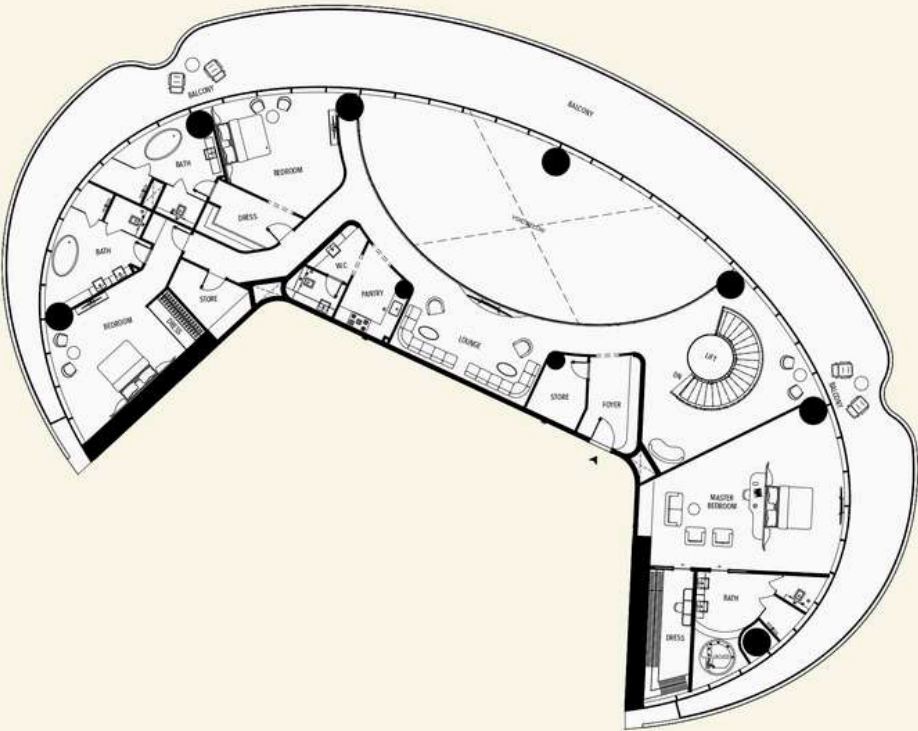
Penthouse Layouts

The Mercedes-Benz  
Vision EQ Silver Arrow  
Penthouse

The Duplex Penthouse | Level 2

AREA	SQ.M	SQ.FT
Suite Area	331 m <sup>2</sup>	3566 ft <sup>2</sup>
Balcony Area	186 m <sup>2</sup>	2000 ft <sup>2</sup>
Total Unit Area	517 m <sup>2</sup>	5566 ft <sup>2</sup>

FLAT DESIGN COMPONENTS	
MASTER BEDROOM	42 m <sup>2</sup>
STAIR/LLOBBY	28 m <sup>2</sup>
BEDROOM	25 m <sup>2</sup>
LOUNGE	24 m <sup>2</sup>
BEDROOM	23 m <sup>2</sup>
PASSAGE	22 m <sup>2</sup>
BATH	20 m <sup>2</sup>
BATH	17 m <sup>2</sup>
BATH	16 m <sup>2</sup>
DRESS	15 m <sup>2</sup>
FOYER	14 m <sup>2</sup>
DRESS	13 m <sup>2</sup>
ENTRY	12 m <sup>2</sup>
STORE	11 m <sup>2</sup>
STORE	10 m <sup>2</sup>
LOBBY	9 m <sup>2</sup>
PASSAGE	8 m <sup>2</sup>
DRESS	7 m <sup>2</sup>
LIFT	6 m <sup>2</sup>
WASH	5 m <sup>2</sup>
WC	4 m <sup>2</sup>





# The Mercedes-Benz Vision EQ Silver Arrow Penthouse

The Duplex Penthouse | Level 2  
Isometric View

- 1 WALK-IN WARDROBE
- 2 BATHROOM SUITE
- 3 MASTER BEDROOM
- 4 FOYER
- 5 BALCONY
- 6 LIFT
- 7 STORE
- 8 LOUNGE
- 9 PANTRY
- 10 WC
- 11 BEDROOM
- 12 WALK-IN WARDROBE
- 13 BATHROOM SUITE
- 14 STORE
- 15 BEDROOM
- 16 BATHROOM SUITE









# The Mercedes-Benz Uhlenhaut Coupé Penthouse

## The Triplex Penthouse

Remarkable. Exceptional. Sensational. In a tribute to the most valuable car in history, the Triplex Penthouse at the height of the hyper-tower pays homage to the legendary automobile by creating an inexplicable experience of living.

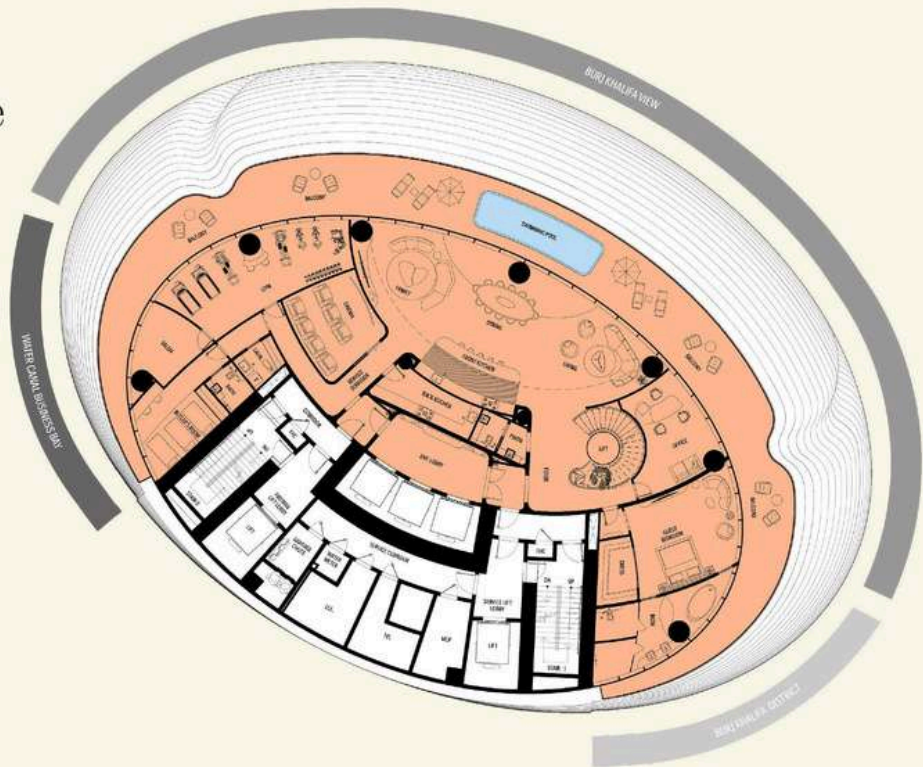




Penthouse Layouts

# The Mercedes-Benz Uhlenhaut Coupé Penthouse

The Triplex Penthouse

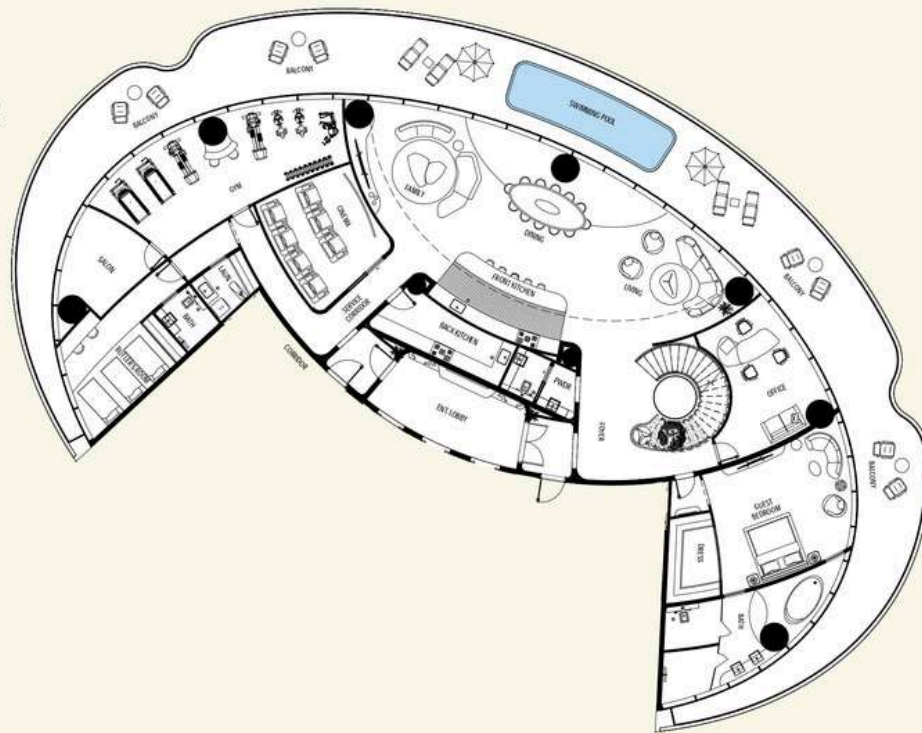


VIEW ANALYSIS  
● BURJ KHALIFA - BURJ KHALIFA DISTRICT  
● BURJ KHALIFA DISTRICT  
● WATER CANAL - BUSINESS BAY

Penthouse Layouts

# The Mercedes-Benz Uhlenhaut Coupé Penthouse

The Triplex Penthouse | Level 1



AREA	SQ.M	SQ.FT
Suite Area	430 m²	4416 ft²
Balcony Area	188 m²	2022 ft²
Total Unit Area	598 m²	6437 ft²

FLAT DESIGN COMPONENTS	
GYM	80 m²
FAMILY	38 m²
GUEST BEDROOM	38 m²
LIVING	38 m²
FOYER	38 m²
DINING	38 m²
BATH	38 m²
OFFICE	38 m²
SUITE'S ROOM	38 m²
CINEMA	38 m²
ENT. LOBBY	38 m²
SERVICE CORRIDOR	38 m²
FRONT KITCHEN	38 m²
SALON	38 m²
BACK KITCHEN	38 m²
DRESS	38 m²
LOBBY	38 m²
LOBBY	38 m²
BATH	38 m²
LOBBY	38 m²
LOBBY	38 m²



Penthouse Layouts

# The Mercedes-Benz Uhlenhaut Coupé Penthouse

The Triplex Penthouse | Level 1  
Isometric View

- 1 LIVING LOUNGE
- 2 DINING
- 3 FAMILY
- 4 FOYER
- 5 OFFICE
- 6 GUEST BEDROOM
- 7 BATHROOM SUITE
- 8 WALK-IN CLOSET
- 9 ENT LOBBY
- 10 BACK KITCHEN
- 11 WC
- 12 FRONT KITCHEN
- 13 CINEMA
- 14 BUTLERS ROOM
- 15 WC
- 16 LAUND
- 17 SALON
- 18 GYM
- 19 BALCONY
- 20 SWIMMING POOL



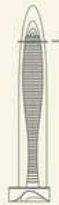
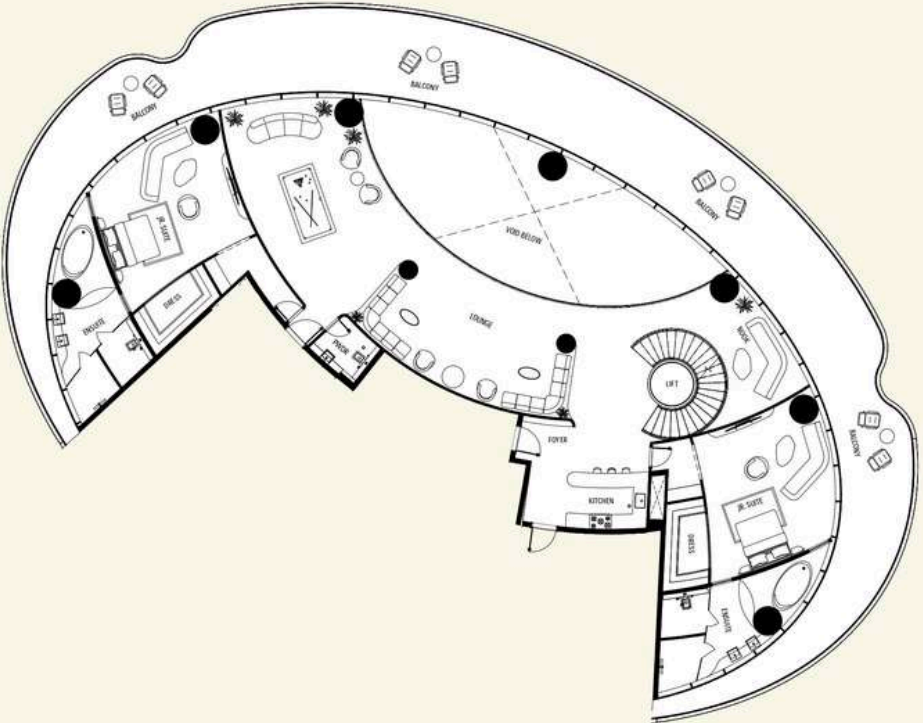
Penthouse Layouts

# The Mercedes-Benz Uhlenhaut Coupé Penthouse

The Triplex Penthouse | Level 2

AREA	SQ.M	SQ.FT
Suite Area	324 m <sup>2</sup>	3483 ft <sup>2</sup>
Balcony Area	191 m <sup>2</sup>	2055 ft <sup>2</sup>
Total Unit Area	515 m <sup>2</sup>	5538 ft <sup>2</sup>

FLAT DESIGN COMPONENTS	
LOUNGE	50 m <sup>2</sup>
NOOK	50 m <sup>2</sup>
BR. SUITE	22 m <sup>2</sup>
BR. SUITE	22 m <sup>2</sup>
EN SUITE	22 m <sup>2</sup>
EN SUITE	22 m <sup>2</sup>
LOBBY	22 m <sup>2</sup>
FOYER	8m <sup>2</sup>
KITCHEN	8 m <sup>2</sup>
DRESS	8 m <sup>2</sup>
DRESS	8 m <sup>2</sup>
POWDR	8.00





Penthouse Layouts

# The Mercedes-Benz Uhlenhaut Coupé Penthouse

The Triplex Penthouse | Level 2  
Isometric View

- 1 LOUNGE
- 2 LIFT
- 3 FOYER
- 4 KITCHEN
- 5 NOOK
- 6 JR. SUITE
- 7 WALK-IN CLOSET
- 8 ENSUITE
- 9 WC
- 10 WALK-IN CLOSET
- 11 ENSUITE
- 12 JR. SUITE
- 13 BALCONY



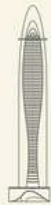
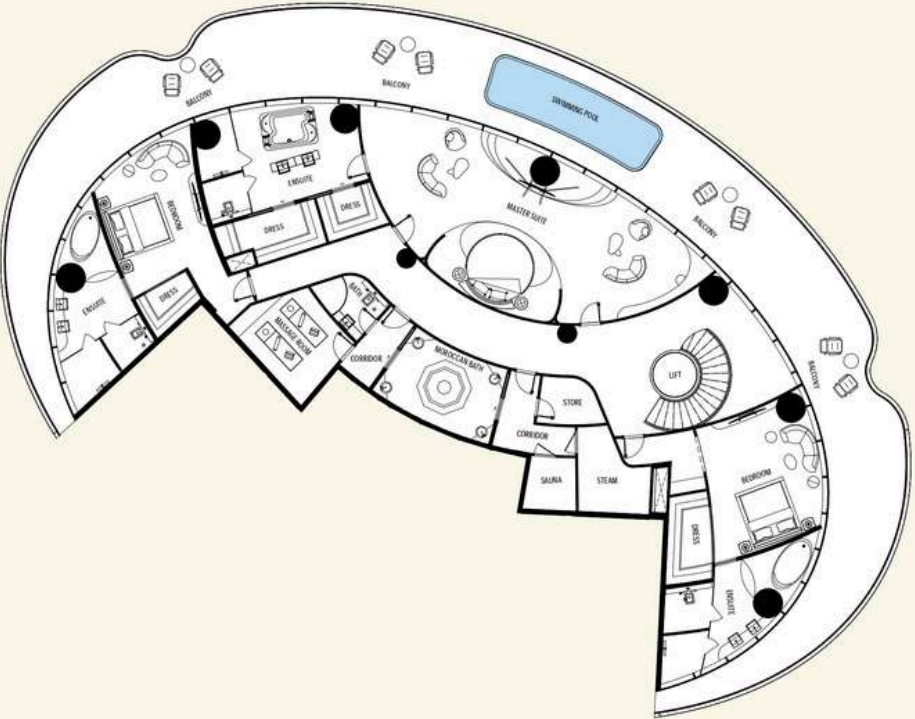
Penthouse Layouts

# The Mercedes-Benz Uhlenhaut Coupé Penthouse

The Triplex Penthouse | Level 3

AREA	SQ.M	SQ.FT
Suite Area	195 m <sup>2</sup>	2104 ft <sup>2</sup>
Balcony Area	316 m <sup>2</sup>	4023 ft <sup>2</sup>
Total Unit Area	569 m <sup>2</sup>	6126 ft <sup>2</sup>

FLAT DESIGN COMPONENTS	
MASTER SUITE	78 m <sup>2</sup>
LOBBY	60 m <sup>2</sup>
BEHROOM	31 m <sup>2</sup>
BEHROOM	26 m <sup>2</sup>
ENSUITE	25 m <sup>2</sup>
BATH	20 m <sup>2</sup>
BATH	20 m <sup>2</sup>
MOROCCAN BATH	13 m <sup>2</sup>
MASSAGE ROOM	13 m <sup>2</sup>
STEAM	8 m <sup>2</sup>
CHES	7 m <sup>2</sup>
CORRIDOR	6 m <sup>2</sup>
CHES	6 m <sup>2</sup>
BATH	5 m <sup>2</sup>
CORRIDOR	4 m <sup>2</sup>
CHES	4 m <sup>2</sup>
CHES	4 m <sup>2</sup>
SAUNA	4 m <sup>2</sup>
STORE	4 m <sup>2</sup>





# The Mercedes-Benz Uhlenhaut Coupé Penthouse

The Triplex Penthouse | Level 3  
Isometric View

- 1 MASTER BEDROOM
- 2 LIFT
- 3 BEDROOM
- 4 ENSUITE
- 5 WALK-IN CLOSET
- 6 STEAM
- 7 SAUNA
- 8 CORRIDOR
- 9 MOROCCAN BATH
- 10 MASSAGE ROOM
- 11 BATHROOM SUITE
- 12 ENSUITE
- 13 BEDROOM
- 14 ENSUITE
- 15 BALCONY







## Where Prestige Meets Property



At Majara Luxury Real Estate L.L.C., we redefine the art of luxury living. Based in the heart of the UAE, we specialize in curating exceptional real estate experiences tailored to the needs of discerning investors, end-users, and global clientele.



With a refined portfolio of premium properties across all seven Emirates, our expertise lies in both off-plan and ready-to-move assets, offering opportunities that blend architectural excellence with investment potential.



We are more than just property consultants & we are partners in your journey to finding the perfect home, investment, or lifestyle. Driven by integrity, market insight, and personalized service, Majara stands as a trusted name in an ever-evolving market.

### Contact Us :

**Phone: +971564452803**

**Email: [info@majararealestate.com](mailto:info@majararealestate.com)**

**<https://majararealestate.com/>**