

The background of the image is a light beige or off-white color with a subtle, organic texture. Overlaid on this background are numerous thin, irregular veins of a golden-brown or light brown color. These veins meander across the frame in various directions, creating a marbled or marble-like effect. The veins vary in thickness, with some being very fine and others slightly more prominent.

LAZORD

MAJARA LUXURY REAL ESTATE LLC

Head Office Level 36-01, Po Box :124382 , Trade Center 1, Sheikh Zayed Road , Burj Al Salam Tower Dubai UAE

Majara Unveils LAZORD, Dubai's New Icon of Modern Luxury

**Experience Unmatched Comfort at LAZORD — Dubai's Most
Prestigious Address**

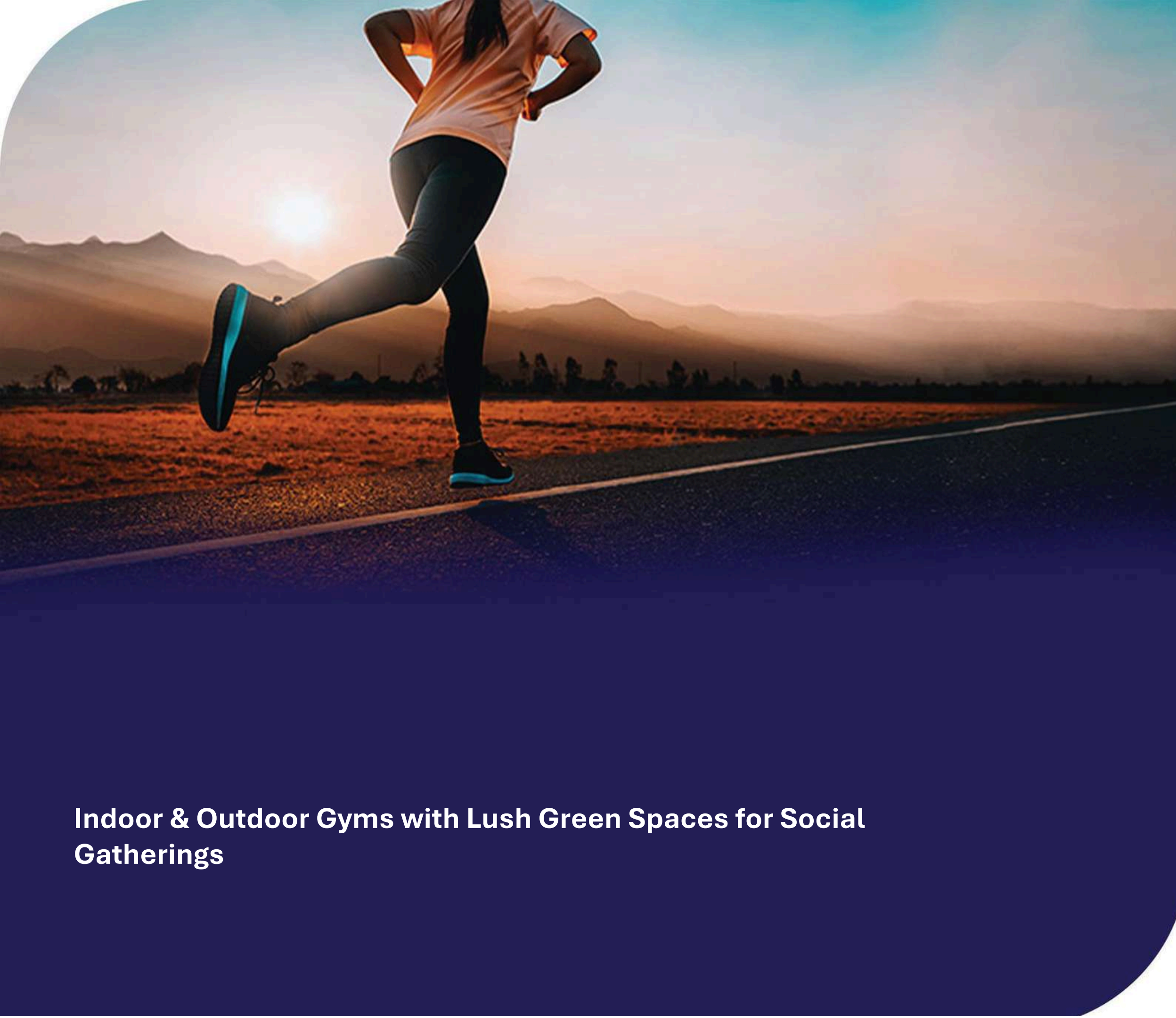


LAZORD: Where Urban Luxury Meets Immediate Access to Dubai's
Finest Attractions



Lazord offers an exceptional range of comfort and leisure amenities designed for the entire family.





Indoor & Outdoor Gyms with Lush Green Spaces for Social Gatherings



Indoor workout or outdoor activity — whatever your routine, Lazord has it all.



Strategically Located in the 20-Minute Zone

LAZORD's prime location places you within **20 minutes of Dubai's most iconic landmarks**, offering a lifestyle that is both luxurious and effortlessly convenient.

Just minutes from:

- Burj Khalifa & Dubai Mall – 20 minutes
- Dubai International Airport – 20 minutes
- Palm Jumeirah – 20 minutes
- Dubai Marina – 20 minutes
- Global Village – 5 minutes



An Exceptional Fusion of Refined Living and Prime Connectivity in Dubai



Experience Premier Living at LAZORD, Where Every Corner of
Dubai Is Just 20 Minutes Away

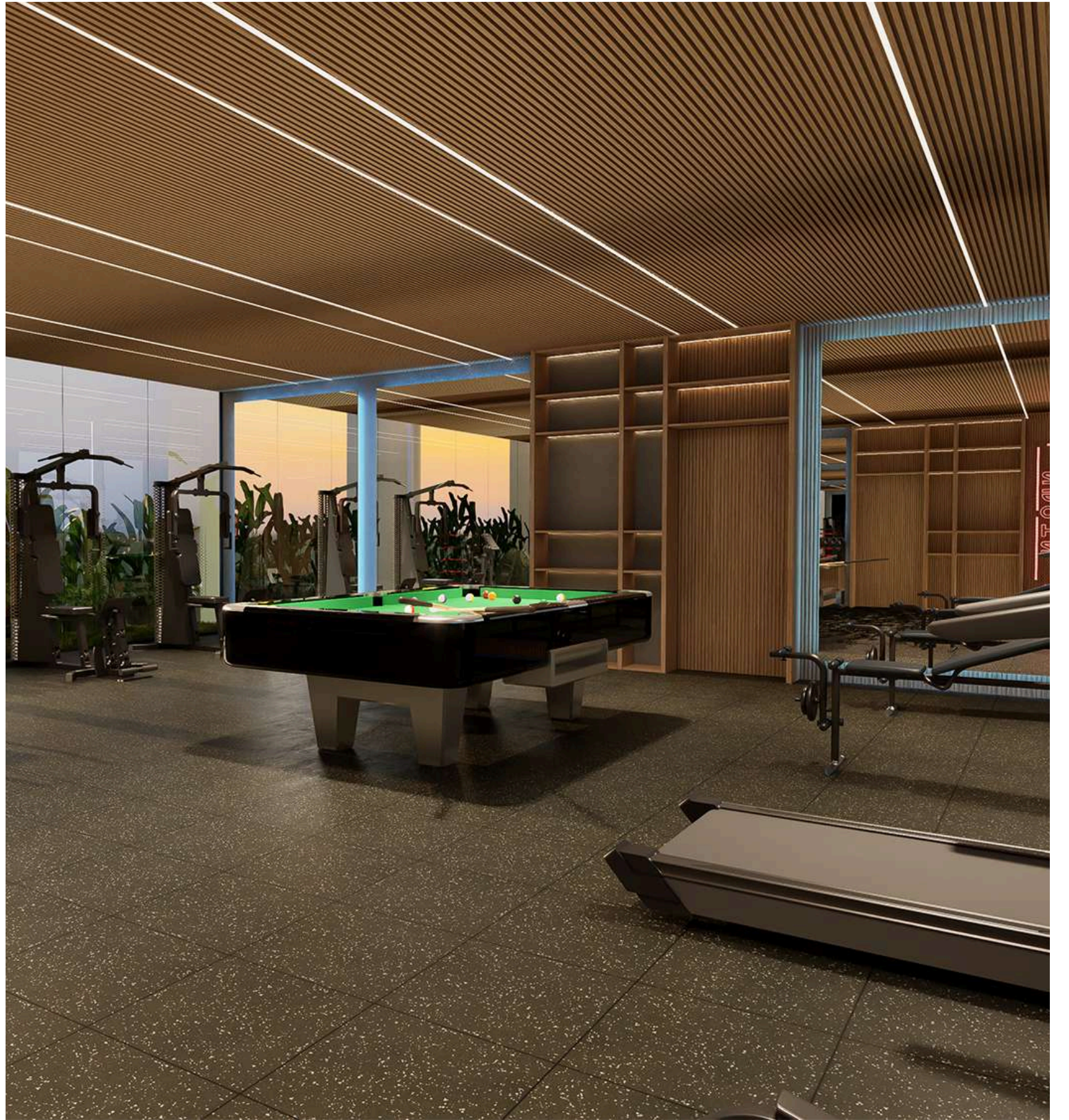




Valet Parking Service





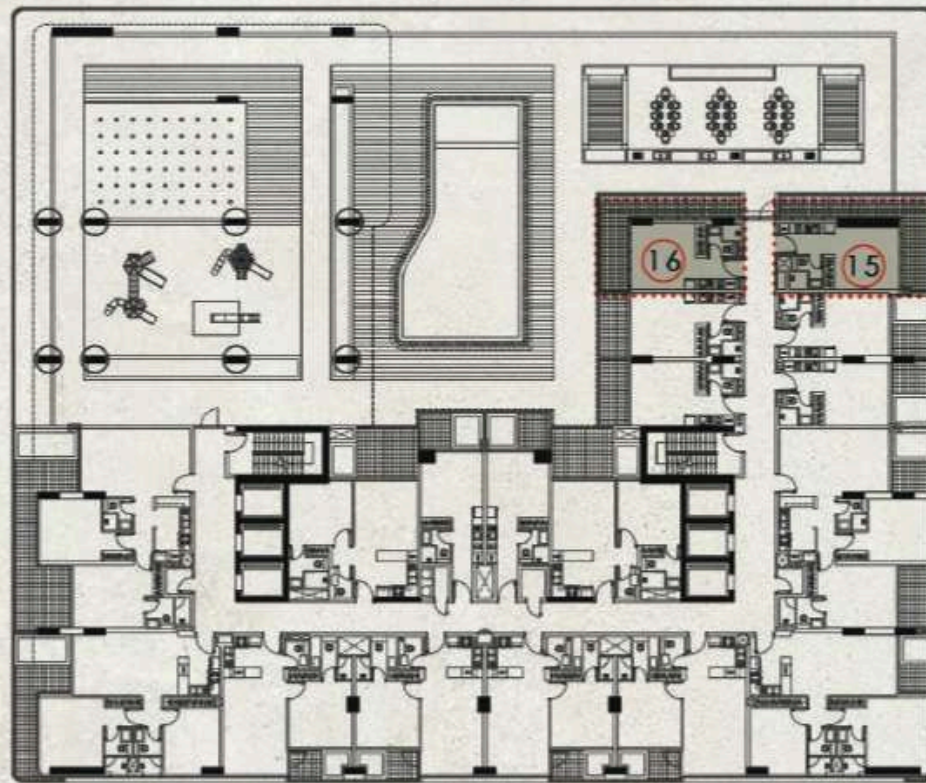


LAZORD

Floor Plans



STUDIO WITH TERRACE



FIRST FLOOR
2 TYPICAL UNITS

TYPE 2
AREA - 49.69 SQM.(534 SQFT.)

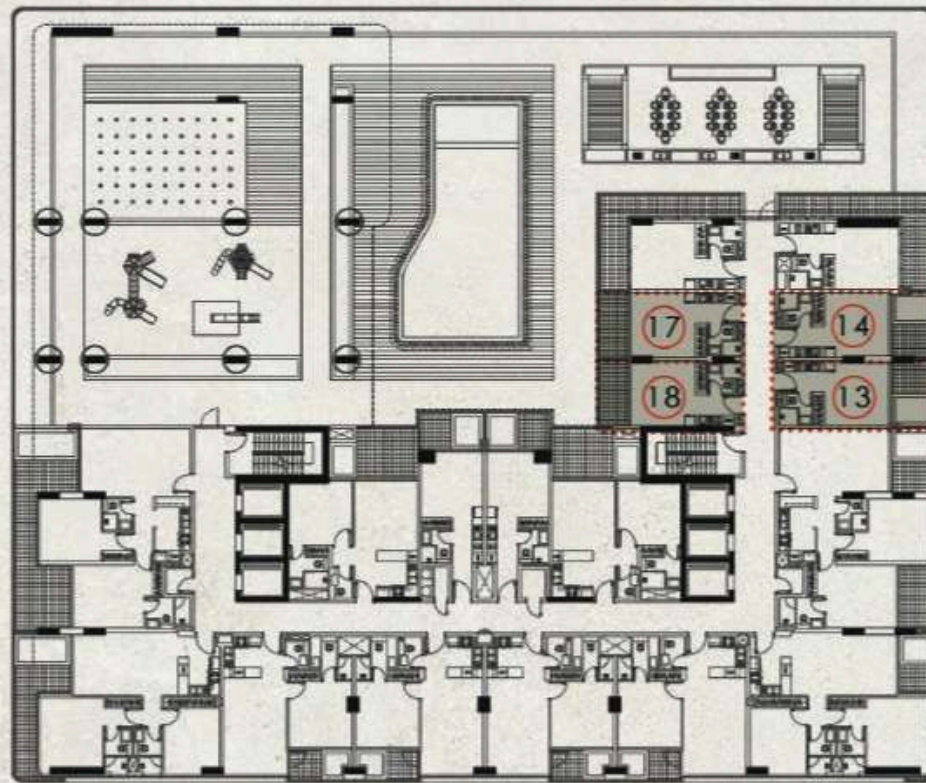
NOTE : NORTH DIRECTION IS AS PER THE KEY PLAN



LAZORD



STUDIO WITH POOL



FIRST FLOOR
4 TYPICAL UNITS

TYPE 1
AREA - 35.57 SQM.(382 SQFT.)

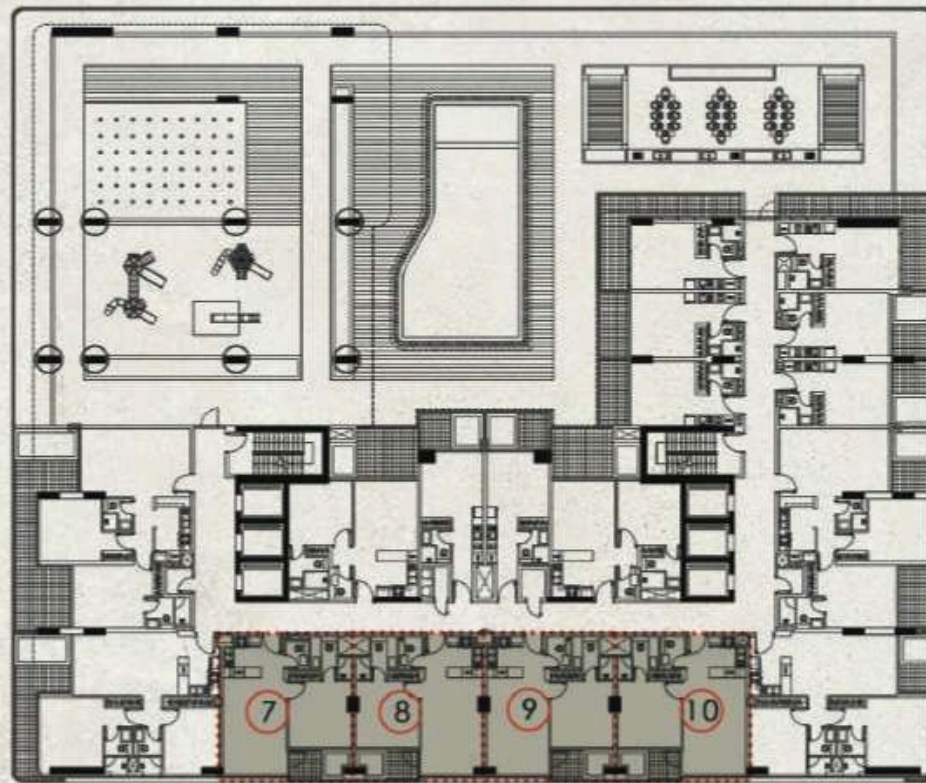
NOTE : NORTH DIRECTION IS AS PER THE KEY PLAN



LAZORD



1 BHK WITH POOL



FIRST FLOOR
4 TYPICAL UNITS

TYPE 1
AREA - 62.46 SQM. (672 SQFT.)

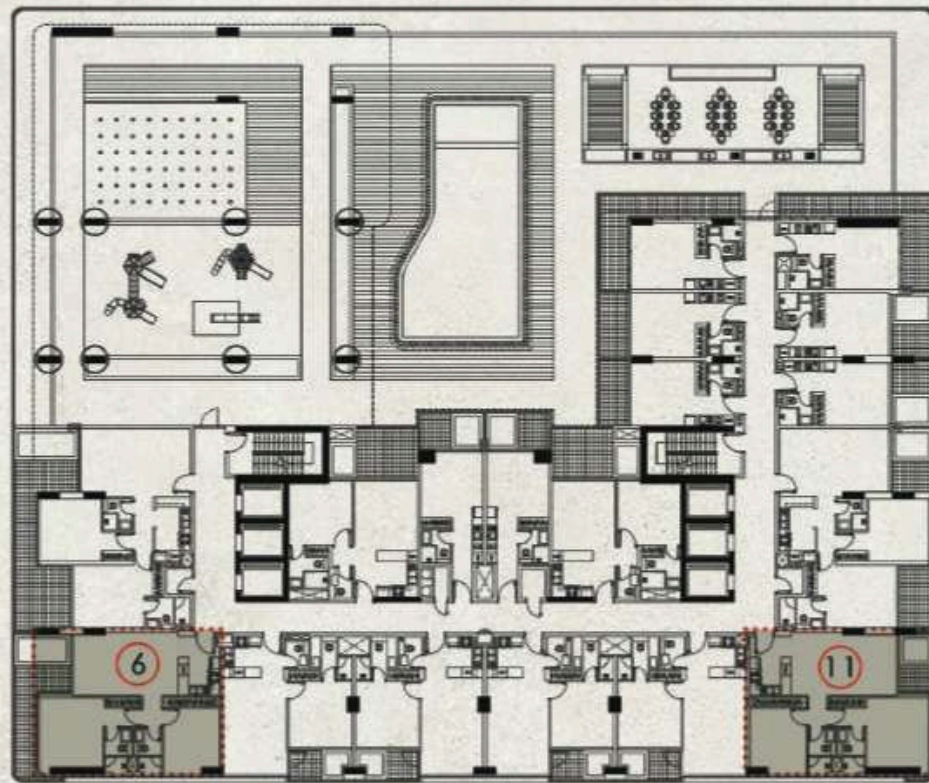
NOTE : NORTH DIRECTION IS AS PER THE KEY PLAN



LAZORD



2BHK WITH 1 BALCONY



FIRST FLOOR
2 TYPICAL UNITS

TYPE 2
AREA - 88.01 SQM.(947 SQFT.)

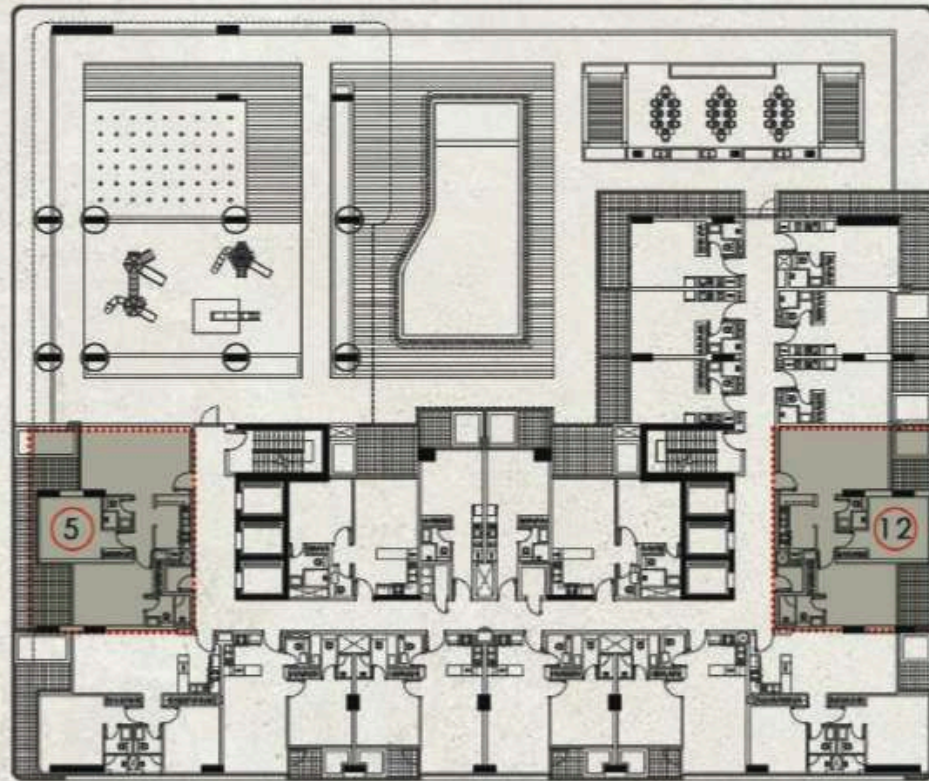
NOTE : NORTH DIRECTION IS AS PER THE KEY PLAN



LAZORD



2BHK WITH 2 BALCONIES



FIRST FLOOR
2 TYPICAL UNITS

TYPE 1
AREA - 103.99 SQM.(1119 SQFT.)

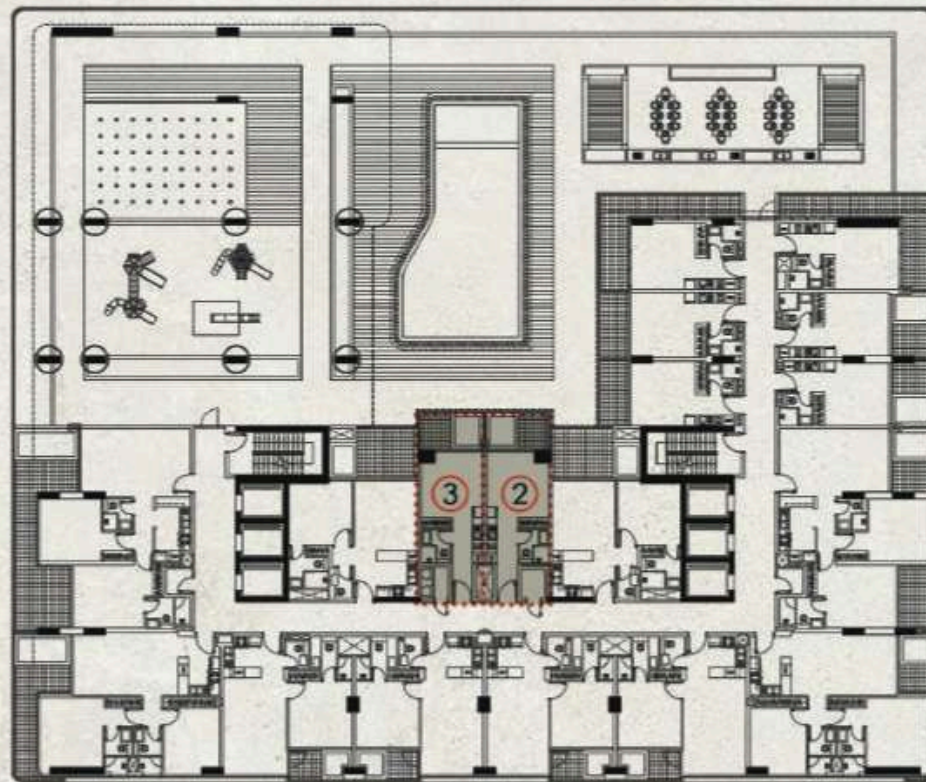
NOTE : NORTH DIRECTION IS AS PER THE KEY PLAN



LAZORD



STUDIO WITH POOL



FIRST FLOOR
2 TYPICAL UNITS

TYPE 3
AREA - 36.89 SQM.(397 SQFT.)

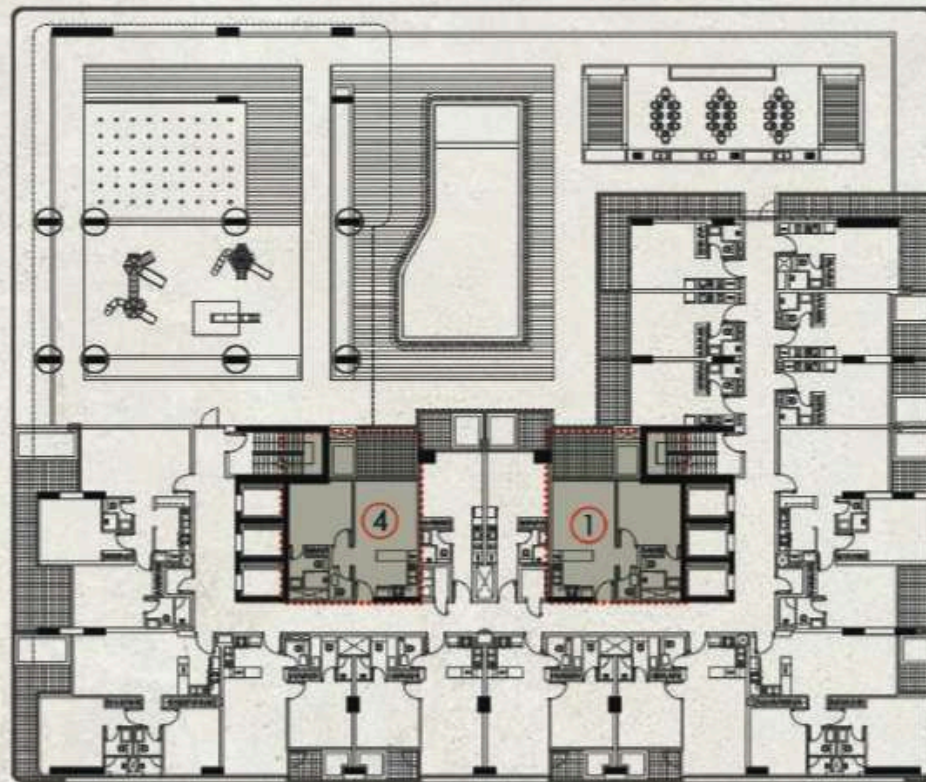
NOTE : NORTH DIRECTION IS AS PER THE KEY PLAN



LAZORD



1 BHK WITH POOL



FIRST FLOOR
2 TYPICAL UNITS

TYPE 2
AREA - 67.76 SQM. (729 SQFT.)

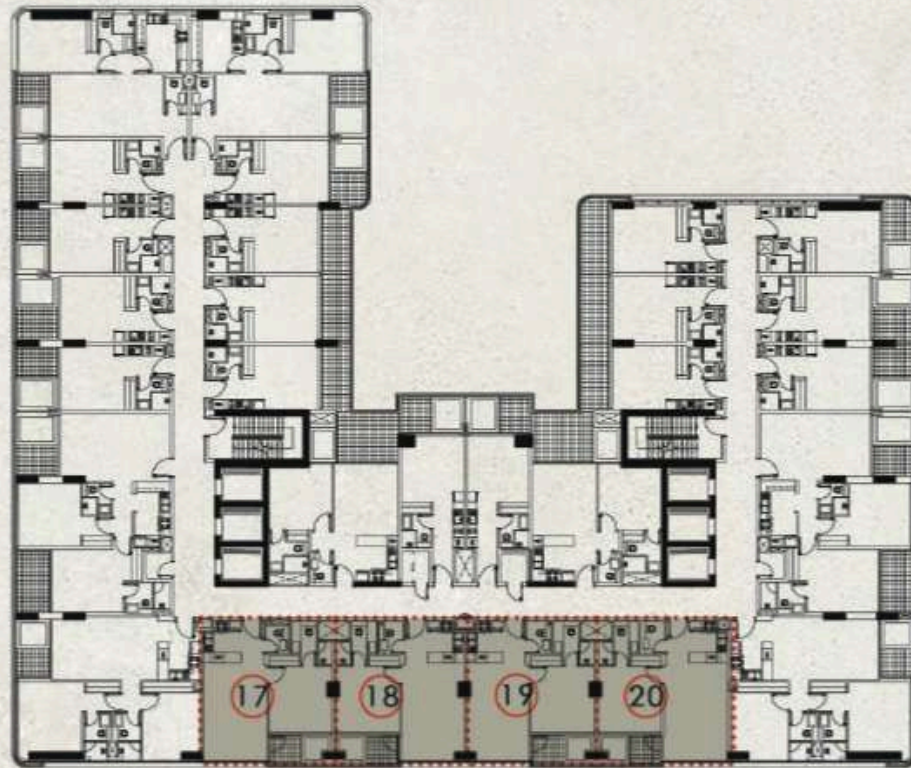
NOTE : NORTH DIRECTION IS AS PER THE KEY PLAN



LAZORD



1BHK WITH POOL



3RD - 9TH FLOOR

4 TYPICAL UNITS

TYPE 2

AREA - 62.46 SQM. (672 SQFT.)

NOTE : NORTH DIRECTION IS AS PER THE KEY PLAN



LAZORD



LAZORD

- 📍 20 minutes to Burj Khalifa
- 📍 20 minutes to Dubai Mall
- 📍 20 minutes to Dubai Airport
- 📍 20 minutes to Palm Jumeirah
- 📍 20 minutes to Marina
- 📍 5 minutes to Global Village





Where Prestige Meets Property



At Majara Luxury Real Estate L.L.C., we redefine the art of luxury living. Based in the heart of the UAE, we specialize in curating exceptional real estate experiences tailored to the needs of discerning investors, end-users, and global clientele.



With a refined portfolio of premium properties across all seven Emirates, our expertise lies in both off-plan and ready-to-move assets, offering opportunities that blend architectural excellence with investment potential.



We are more than just property consultants & we are partners in your journey to finding the perfect home, investment, or lifestyle. Driven by integrity, market insight, and personalized service, Majara stands as a trusted name in an ever-evolving market.

Contact Us :

Phone: +971564452803

Email: info@majararealestate.com

<https://majararealestate.com/>