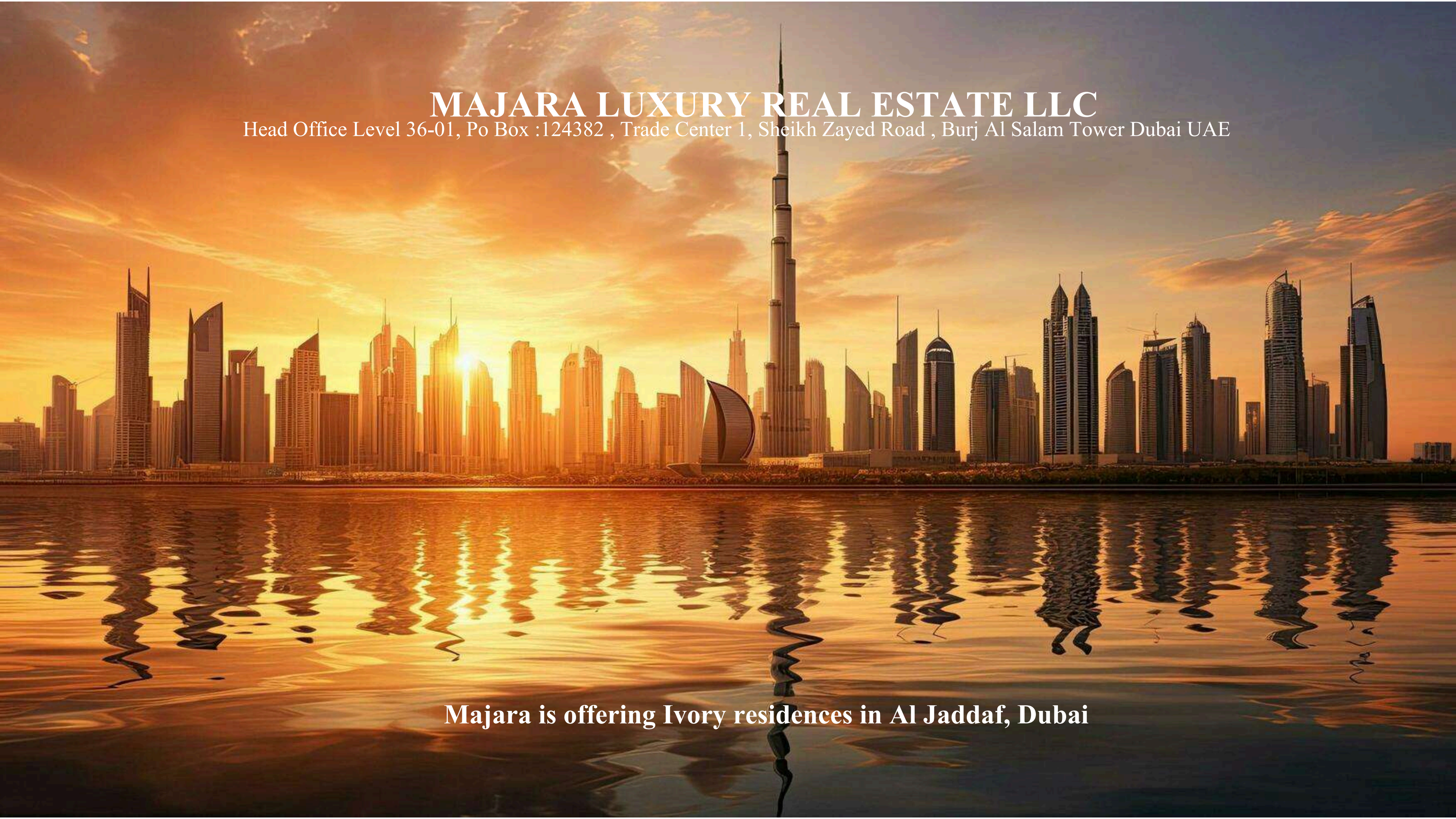


IVORY

Ivory Residence defines luxury living in the heart Dubai.

MAJARA LUXURY REAL ESTATE LLC

Head Office Level 36-01, Po Box :124382 , Trade Center 1, Sheikh Zayed Road , Burj Al Salam Tower Dubai UAE



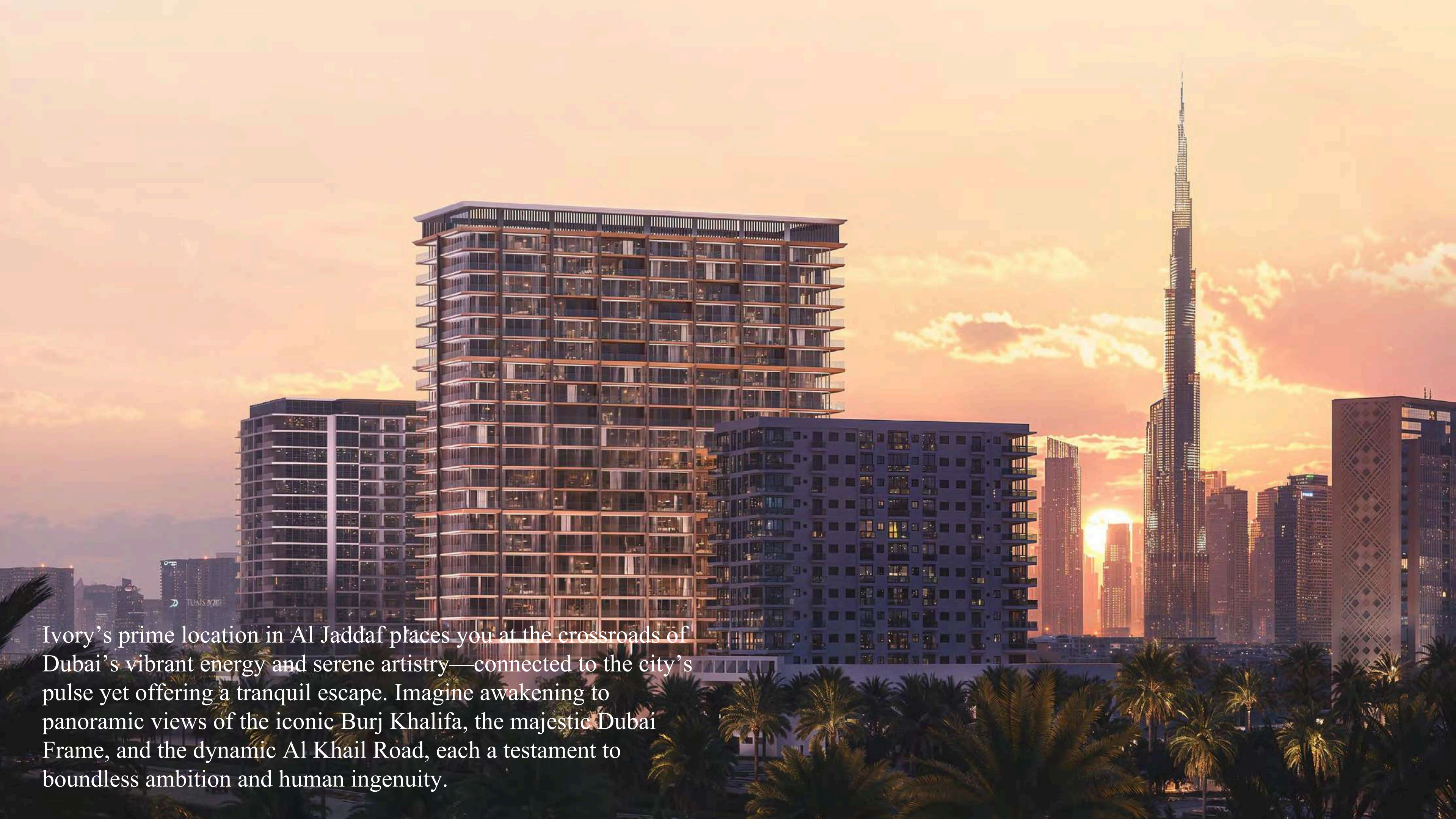
Majara is offering Ivory residences in Al Jaddaf, Dubai



The Ultimate Expression of Sophistication

Architectural elements, each echoing journeys and discoveries, shape spaces of harmonious revelation and refined beauty. Ivory's façade, a testament to modern elegance, seamlessly integrates enduring materials into a contemporary form.





Ivory's prime location in Al Jaddaf places you at the crossroads of Dubai's vibrant energy and serene artistry—connected to the city's pulse yet offering a tranquil escape. Imagine awakening to panoramic views of the iconic Burj Khalifa, the majestic Dubai Frame, and the dynamic Al Khail Road, each a testament to boundless ambition and human ingenuity.





Project Facts

PROPERTY TYPE

Residential & Retail

PLOT AREA

3088.32 SQ.M / 33242.00 SQFT

DESCRIPTION

2B + G + 3P +20 Residential Floors + Roof

NUMBER OF UNITS

Studio Apartment - 76

1 Bedroom Apartment - 177

2 Bedroom Apartment - 78

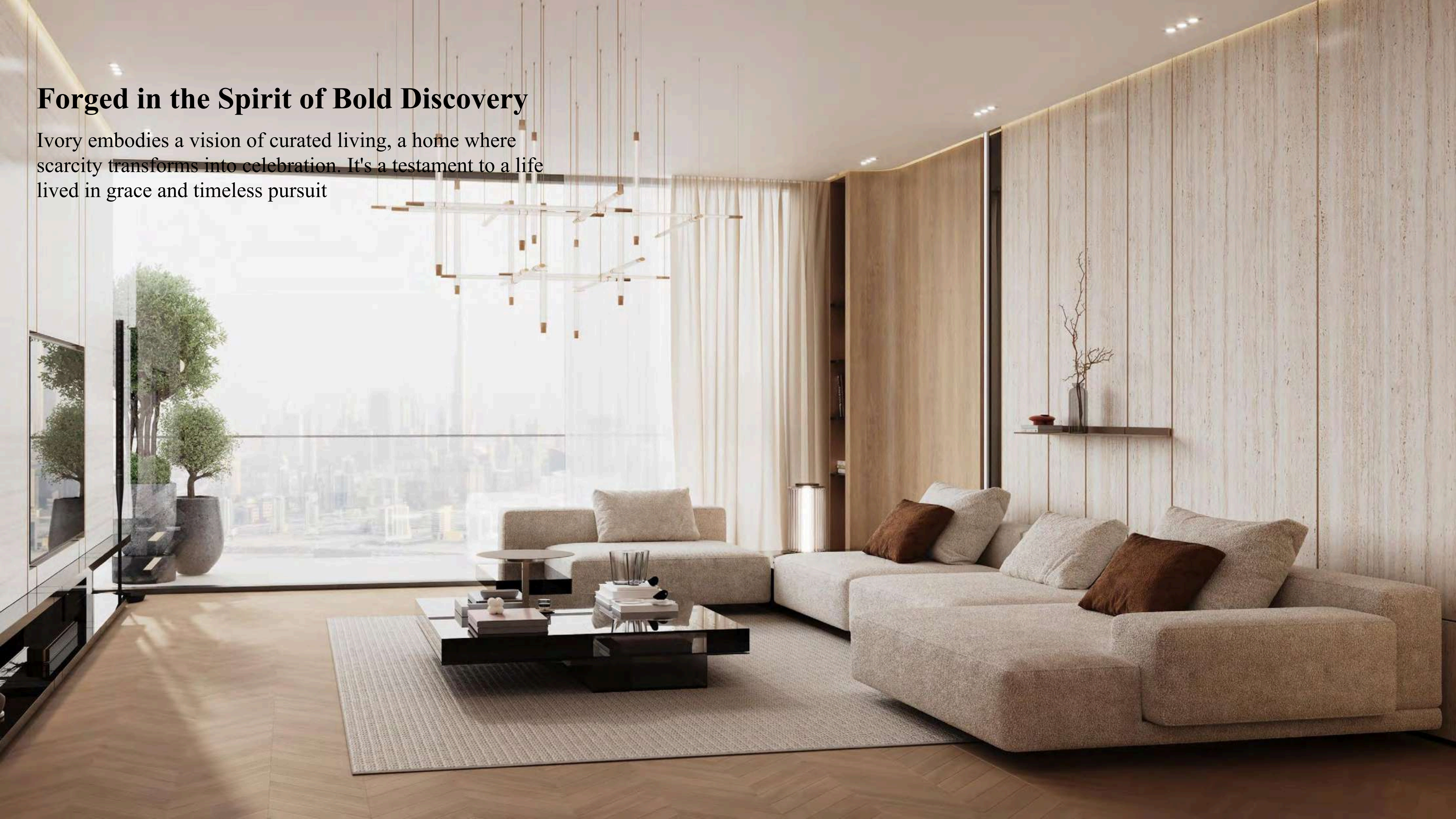
TOTAL UNITS

Residential units - 331

Shop (Ground Floor) - 01

Forged in the Spirit of Bold Discovery

Ivory embodies a vision of curated living, a home where scarcity transforms into celebration. It's a testament to a life lived in grace and timeless pursuit







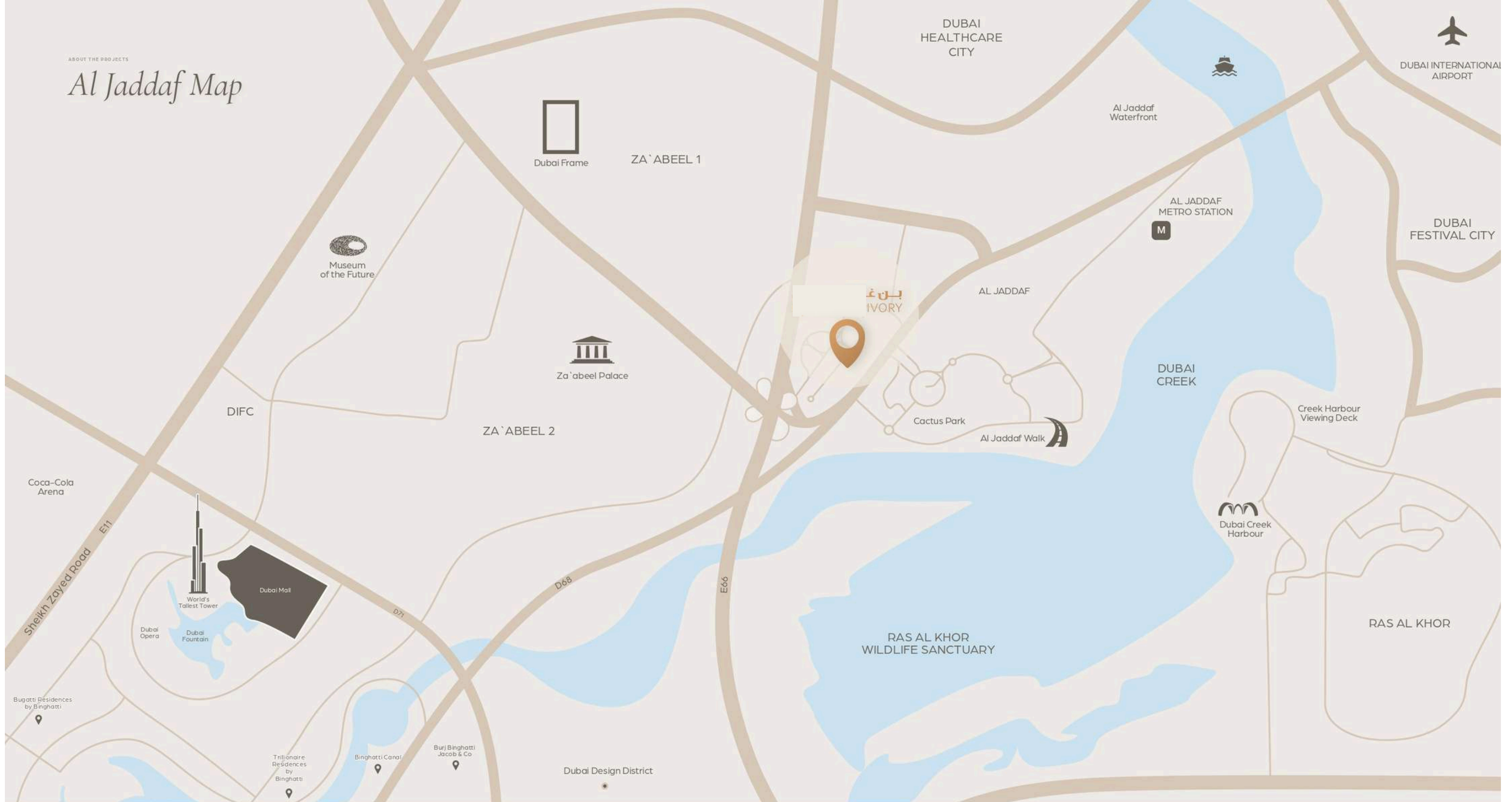






ABOUT THE PROJECTS

Al Jaddaf Map



Burj Khalifa & Downtown Dubai
3-5 MINUTES



Dubai Opera
3-5 MINUTES



The Dubai Mall
3-5 MINUTES



Dubai Design District
5-8 MINUTES



Meydan Racecourse
5-10 MINUTES



Ras Al Khor Wildlife Sanctuary
5-10 MINUTES



Museum of the Future
4-6 MINUTES



Dubai Frame
4-6 MINUTES



Al Jaddaf Walk
2-3 MINUTES



STUDIO

Studio / Type 01



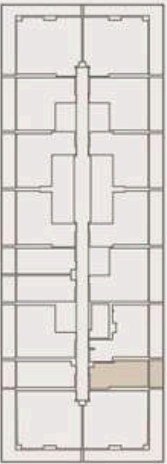
AREA	SQ.M	SQ.FT
SUITE AREA	35.13 m²	378.14 ft²
BALCONY AREA	8.87 m²	95.48 ft²
TOTAL UNITE AREA	44.00 m²	473.61 ft²



Studio / Type 02



AREA	SQ.M	SQ.FT
SUITE AREA	34.71 m²	373.62 ft²
BALCONY AREA	8.87 m²	95.48 ft²
TOTAL UNITE AREA	43.58 m²	469.09 ft²



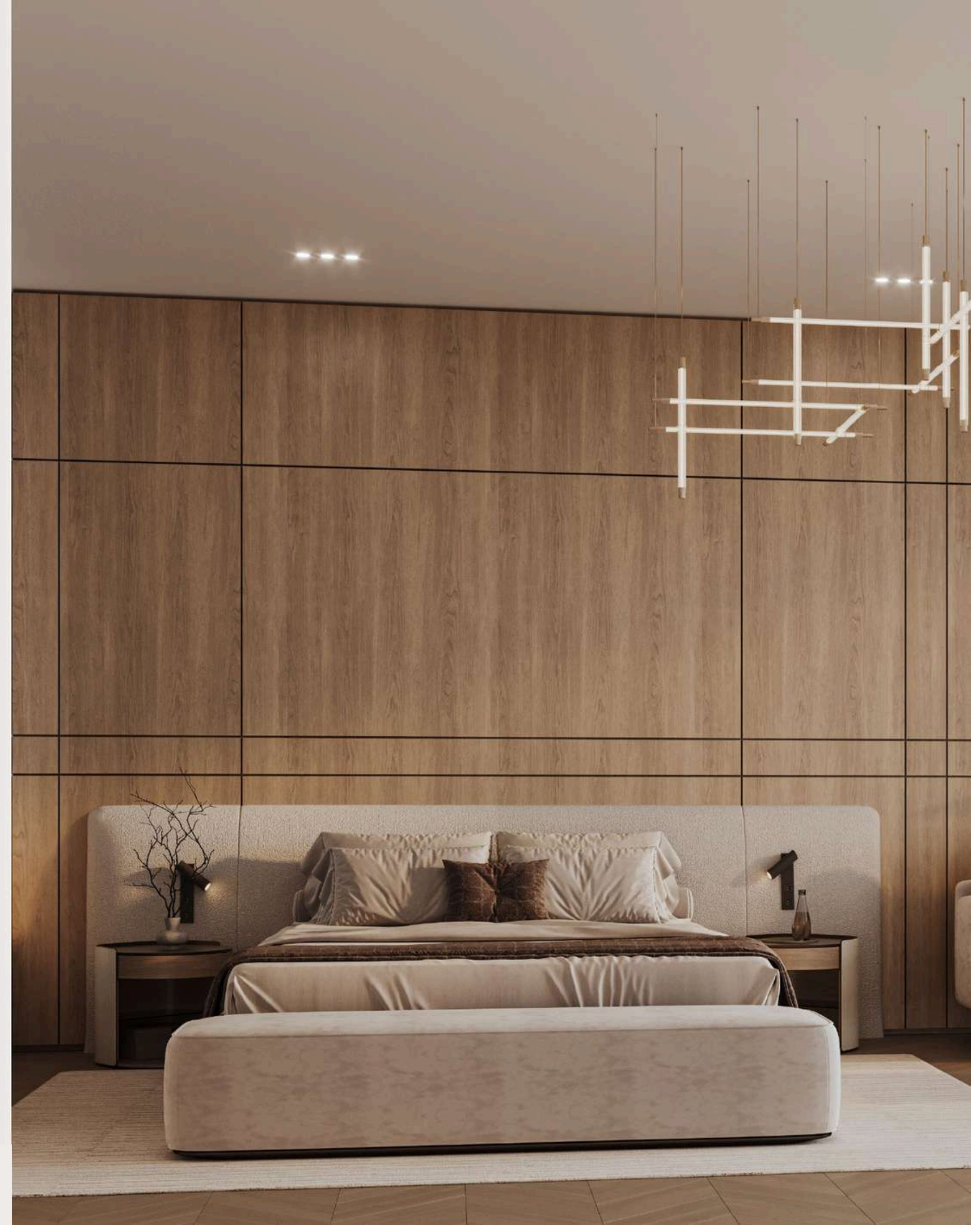
FLOOR PLANS

Studio

Isometric View



AREA	SQ.M	SQ.FT
SUITE AREA	35.13 m ²	378.14 ft ²
BALCONY AREA	8.87 m ²	95.48 ft ²
TOTAL UNITE AREA	44.00 m ²	473.61 ft ²





1 BR
APARTMENT

1 Bedroom / Type 01



AREA	SQ.M	SQ.FT
SUITE AREA	57.05 m ²	614.08 ft ²
BALCONY AREA	16.54 m ²	178.04 ft ²
TOTAL UNITE AREA	73.59 m ²	792.12 ft ²

FLAT DESIGN COMPONENTS

BATH	4 m ²
BEDROOM	16 m ²
LIVING & DINING	19 m ²
KITCHEN	7 m ²
CORRIDOR	7 m ²
LIVING & DINING	1 m ²



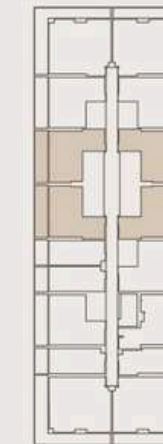
1 Bedroom / Type 02



AREA	SQ.M	SQ.FT
SUITE AREA	55.90 m ²	601.70 ft ²
BALCONY AREA	16.93 m ²	182.23 ft ²
TOTAL UNITE AREA	72.83 m ²	783.94 ft ²

FLAT DESIGN COMPONENTS

BATH	4 m ²
BEDROOM	14 m ²
LIVING & DINING	18 m ²
KITCHEN	7 m ²
CORRIDOR	6 m ²



1 Bedroom / Type 03



AREA	SQ.M	SQ.FT
SUITE AREA	54.15m ²	582.87ft ²
BALCONY AREA	16.57 m ²	178.36 ft ²
TOTAL UNITE AREA	70.72 m ²	761.22 ft ²

FLAT DESIGN COMPONENTS

BATH	4 m ²
BEDROOM	14 m ²
LIVING & DINING	16 m ²
KITCHEN	6 m ²
CORRIDOR	7 m ²



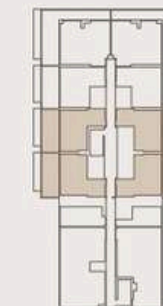
1 Bedroom / Type 04



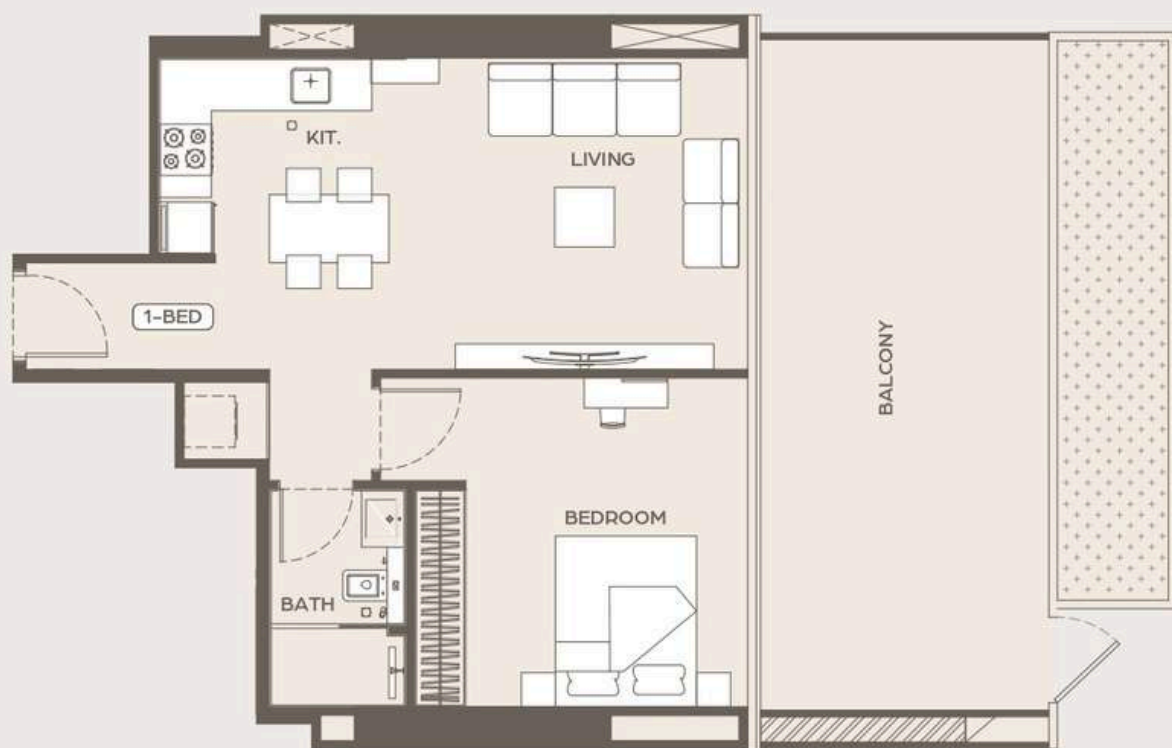
AREA	SQ.M	SQ.FT
SUITE AREA	55.88 m ²	601.49 ft ²
BALCONY AREA	28.46 m ²	306.34 ft ²
TOTAL UNITE AREA	84.34 m ²	907.83 ft ²

FLAT DESIGN COMPONENTS

BATH	4 m ²
BEDROOM	14 m ²
LIVING & DINING	18 m ²
KITCHEN	7 m ²
CORRIDOR	6 m ²

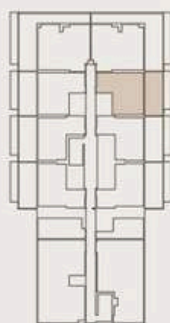


1 Bedroom / Type 05



AREA	SQ.M	SQ.FT
SUITE AREA	57.00 m ²	613.54 ft ²
BALCONY AREA	27.94 m ²	300.74 ft ²
TOTAL UNITE AREA	84.94 m ²	914.29 ft ²

FLAT DESIGN COMPONENTS	
BATH	4 m ²
BEDROOM	16 m ²
LIVING & DINING	19 m ²
KITCHEN	7 m ²
CORRIDOR	7 m ²
LAUNDRY	1 m ²



1 Bedroom / Type 06



AREA	SQ.M	SQ.FT
SUITE AREA	58.09 m ²	625.28 ft ²
BALCONY AREA	16.57 m ²	178.36 ft ²
TOTAL UNITE AREA	74.66 m ²	803.63 ft ²

FLAT DESIGN COMPONENTS	
BATH	4 m ²
BEDROOM	16 m ²
LIVING & DINING	19 m ²
KITCHEN	7 m ²
CORRIDOR	7 m ²
LAUNDRY	1 m ²



1 Bedroom / Type 07



AREA	SQ.M	SQ.FT
SUITE AREA	57.05 m ²	614.08 ft ²
BALCONY AREA	16.54 m ²	178.04 ft ²
TOTAL UNITE AREA	73.59 m ²	792.12 ft ²

FLAT DESIGN COMPONENTS

BATH	4 m ²
BEDROOM	16 m ²
LIVING & DINING	19 m ²
KITCHEN	7 m ²
CORRIDOR	7 m ²
LAUNDRY	1 m ²



1 Bedroom / Type 08



AREA	SQ.M	SQ.FT
SUITE AREA	57.01 m ²	613.65 ft ²
BALCONY AREA	27.94 m ²	300.74 ft ²
TOTAL UNITE AREA	84.95 m ²	914.39 ft ²

FLAT DESIGN COMPONENTS

BATH	4 m ²
BEDROOM	16 m ²
LIVING & DINING	19 m ²
KITCHEN	7 m ²
CORRIDOR	7 m ²
LAUNDRY	1 m ²

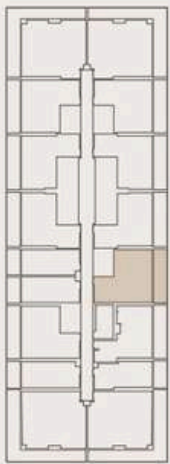


1 Bedroom / Type 09



AREA	SQ.M	SQ.FT
SUITE AREA	58.08 m ²	625.17 ft ²
BALCONY AREA	16.79 m ²	180.73 ft ²
TOTAL UNITE AREA	74.87 m ²	805.89 ft ²

FLAT DESIGN COMPONENTS	
BATH	4 m ²
BEDROOM	16 m ²
LIVING & DINING	19 m ²
KITCHEN	7 m ²
CORRIDOR	7 m ²
LAUNDRY	1 m ²



1 Bedroom
Isometric View



AREA	SQ.M	SQ.FT
SUITE AREA	58.08 m ²	625.17 ft ²
BALCONY AREA	16.79 m ²	180.73 ft ²
TOTAL UNITE AREA	74.87 m ²	805.89 ft ²

FLAT DESIGN COMPONENTS	
BATH	4 m ²
BEDROOM	16 m ²
LIVING & DINING	19 m ²
KITCHEN	7 m ²
CORRIDOR	7 m ²
LAUNDRY	1 m ²





2 BR
APARTMENT

FLOOR PLANS

FLOOR PLANS

*Embark on a Journey of
Timeless Discovery*

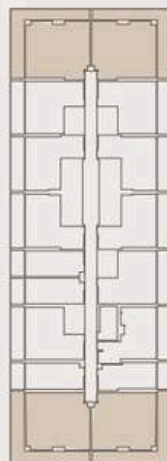


2 Bedroom / Type 01



AREA	SQ.M	SQ.FT
SUITE AREA	80.72 m ²	868.86 ft ²
BALCONY AREA	35.87 m ²	386.10 ft ²
TOTAL UNITE AREA	116.59 m ²	1254.96 ft ²

FLAT DESIGN COMPONENTS	
BATH	4 m ²
BEDROOM	15 m ²
LIVING	16 m ²
KITCHEN & DINING	7 m ²
CORRIDOR	8 m ²
M.BATH	4 m ²
M.BEDROOM	18 m ²

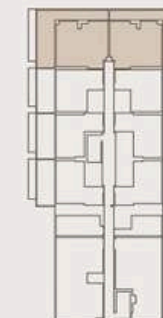


2 Bedroom / Type 02



AREA	SQ.M	SQ.FT
SUITE AREA	80.68 m ²	868.43 ft ²
BALCONY AREA	54.93 m ²	591.26 ft ²
TOTAL UNITE AREA	135.61 m ²	1459.69 ft ²

FLAT DESIGN COMPONENTS	
BATH	4 m ²
BEDROOM	15 m ²
LIVING	16 m ²
KITCHEN & DINING	7 m ²
CORRIDOR	8 m ²
M.BATH	4 m ²
M.BEDROOM	18 m ²





Where Prestige Meets Property



At Majara Luxury Real Estate L.L.C., we redefine the art of luxury living. Based in the heart of the UAE, we specialize in curating exceptional real estate experiences tailored to the needs of discerning investors, end-users, and global clientele.



With a refined portfolio of premium properties across all seven Emirates, our expertise lies in both off-plan and ready-to-move assets, offering opportunities that blend architectural excellence with investment potential.



We are more than just property consultants & we are partners in your journey to finding the perfect home, investment, or lifestyle. Driven by integrity, market insight, and personalized service, Majara stands as a trusted name in an ever-evolving market.

Contact Us :

Phone: +971564452803

Email: info@majararealestate.com

<https://majararealestate.com/>