

MAJARA LUXURY REAL ESTATE LLC

Head Office Level 36-01, Po Box :124382 , Trade Center 1, Sheikh Zayed Road , Burj Al Salam Tower Dubai UAE





Luxury, Raised to a Higher Standard

Ajman continues to evolve as a hub of opportunity, blending city energy with peaceful surroundings. In the center of Al Amerah, **Infinity Tower** introduces a fresh vision of smart, connected living. Its modern design, well-crafted spaces, and convenient access to key destinations make it ideal for today's young professionals and families. **Infinity Tower isn't just a place to live—it's where modern life comes together effortlessly.**

WHY INVEST IN AJMAN

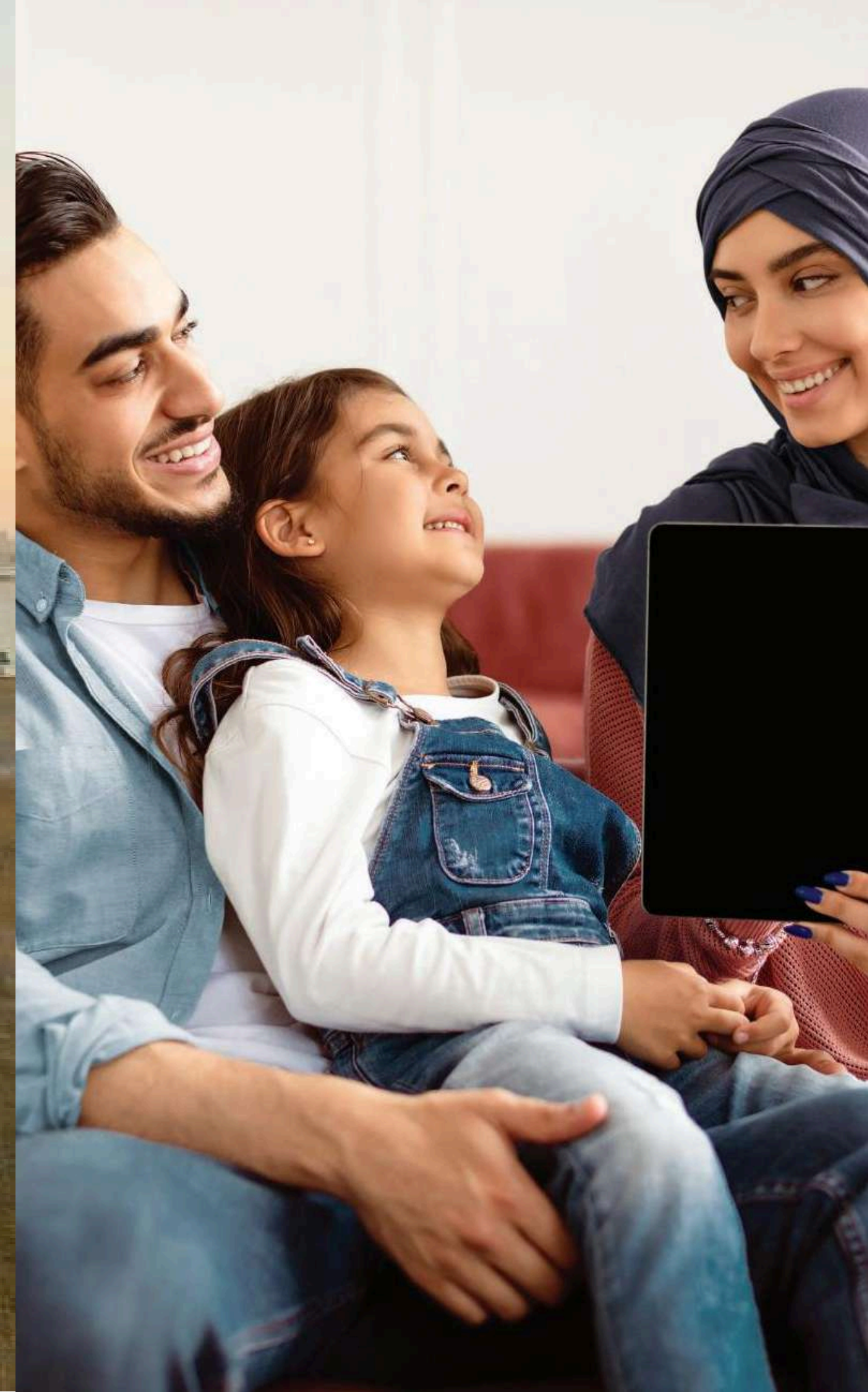
Ajman's appeal as an investment hub continues to rise, supported by business-friendly regulations, major infrastructure upgrades, and its strategic proximity to Dubai and Sharjah. The emirate's thriving free zone, investor-visa incentives, and flexible residency laws are attracting growing interest from both regional and international buyers.

- Prime Location
- Future Railway Access
- Affordable Entry
- Strong ROI
- Low Utility Costs
- Residency Benefits
- Ajman Free Zone
- Proximity to Education
- Access to key Attractions



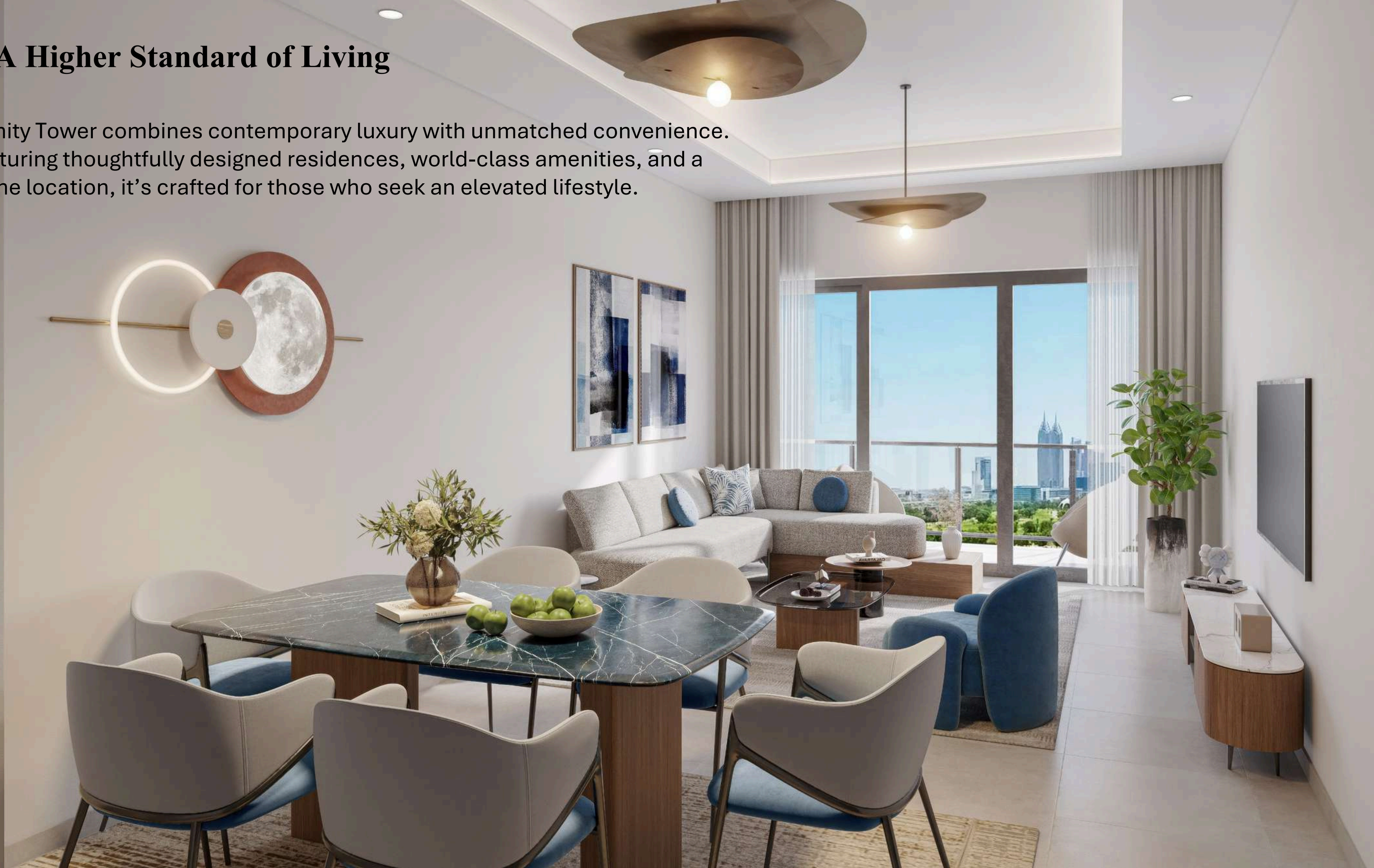
Your Link to the Heart of the City

Infinity Tower is ideally situated in Ajman's Al Amerah district, a thriving community that combines serene living with urban convenience. With easy access to Sheikh Mohammed Bin Zayed Road, residents can effortlessly commute to Dubai, Sharjah, Ras Al Khaimah, and Umm Al Quwain, making work, leisure, and city exploration simple and stress-free.



A Higher Standard of Living

Infinity Tower combines contemporary luxury with unmatched convenience. Featuring thoughtfully designed residences, world-class amenities, and a prime location, it's crafted for those who seek an elevated lifestyle.



Sophistication in Every Detail

Infinity Tower presents thoughtfully designed two- and three-bedroom residences, each crafted to offer a perfect blend of comfort and style.

- Spacious Living, Illuminated by Nature
- Open-plan living and dining areas for seamless entertaining
- Sleek, modern kitchens with premium finishes
- Private balconies offering panoramic city views
- High-quality materials and finishes throughout
- Neutral color palette creating an ambiance of sophisticated elegance



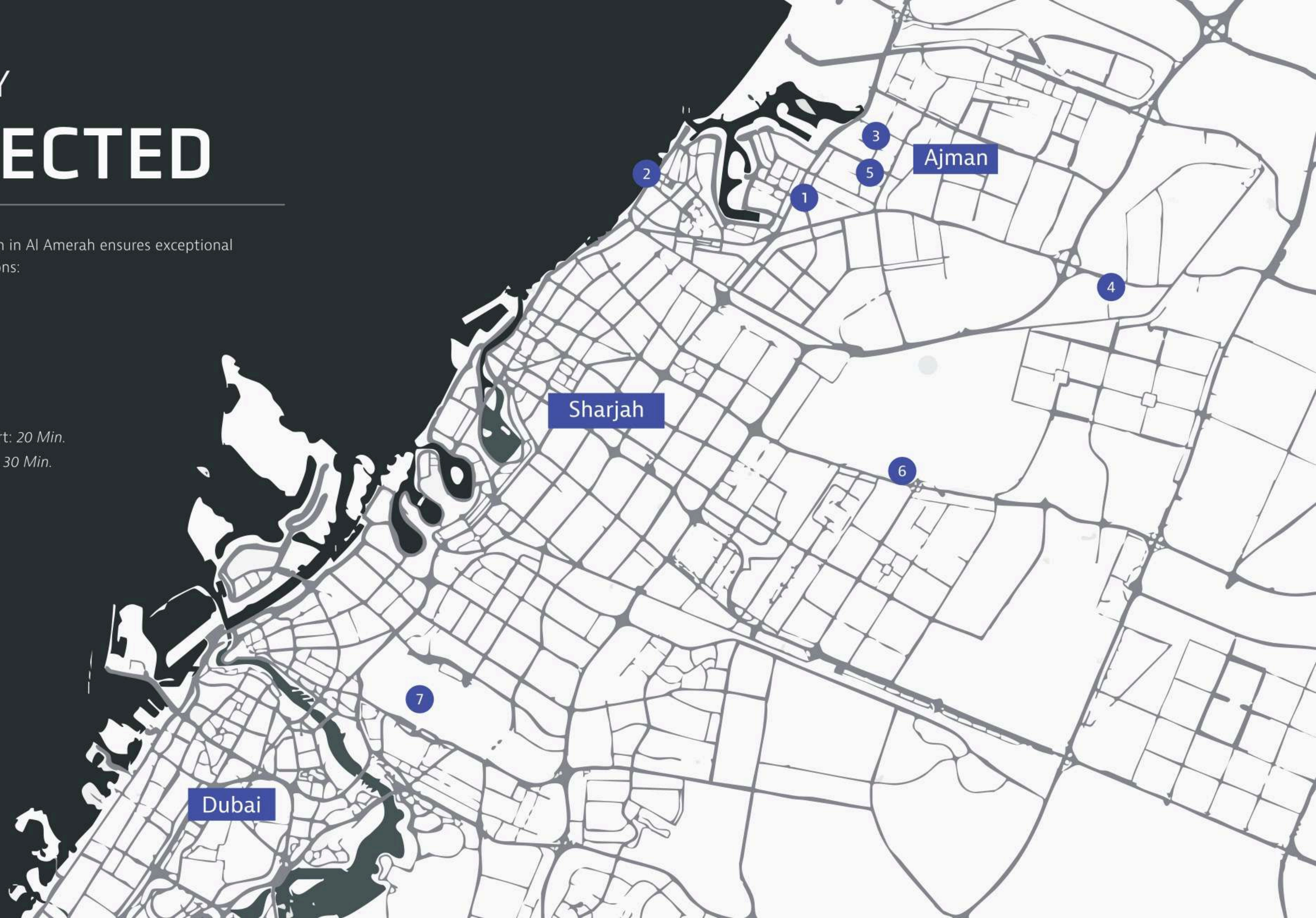




SEAMLESSLY CONNECTED

Infinity Tower's prime location in Al Amerah ensures exceptional connectivity to key destinations:

1. Ajman City Centre: *10 Min.*
2. Ajman Beach: *15 Min.*
3. Amina Hospital: *10 Min.*
4. Al Hamediya Park: *5 Min.*
5. Ajman University: *15 Min.*
6. Sharjah International Airport: *20 Min.*
7. Dubai International Airport: *30 Min.*















INDULGE IN A WORLD OF AMENITIES

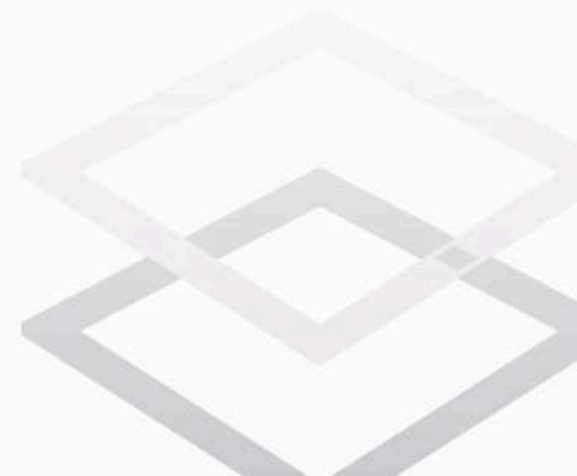
Infinity Tower offers an extensive array of world-class amenities designed to elevate residents' lifestyle and well-being.

On-Site

- State-of-the-art health club
- Resort-style swimming pool
- Landscaped gardens
- Children's play area
- 24/7 security
- Covered parking
- High-speed elevators
- Retail spaces

Nearby

- Markets and Shopping Centres
- Schools and Universities
- Parks
- Recreation Centres
- Restaurants
- Walking Areas
- Sitting Areas





INFINITY TOWER: KEY INFORMATION

Project Name: Infinity Tower

Location: Al Amerah, Ajman

Property Type: Residential Apartments

Total Number of Units: 720

Unit Mix: 2 & 3 BHK Apartments

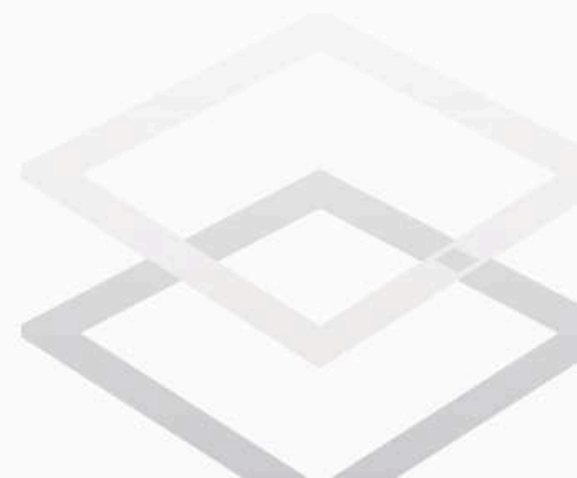
2 BHK Unit Sizes: 1699.17 sqft

3 BHK Unit Sizes: 2039.88 sqft

Completion Date: Q4 2027

Handover Date: Q1 2028

Payment Plan: 40/60 (2 years/4 years, Total 6 years)



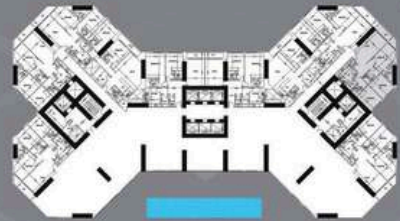
An aerial photograph of a city skyline, featuring several tall skyscrapers. A large, white, semi-transparent diamond shape is overlaid on the ground in the center of the image. The text "LEVEL 1" is centered within this diamond.

LEVEL 1



UNIT - 102

3 BEDROOM - LEVEL-01
GROSS AREA 4137.71 sq.ft
384.41 sqm

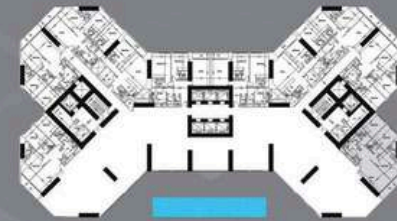


DISCLAIMER:
All measurements are indicative and are for marketing purposes only. All efforts have been made to ensure their accuracy, however these layouts are subject to change at the discretion of the developer and should not be relied upon as final. The actual area may vary from the stated area and the developer reserves the right to make therevisions/alterations, at its absolute discretion, without any liability whatsoever.



UNIT - 101

3 BEDROOM - LEVEL-01
GROSS AREA 5957.17 sq.ft
553.44 sqm

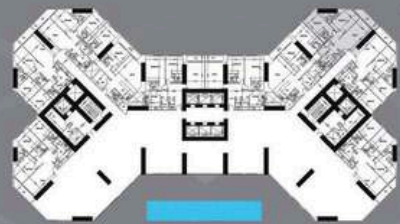


DISCLAIMER:
All measurements are indicative and are for marketing purposes only. All efforts have been made to ensure their accuracy, however these layouts are subject to change at the discretion of the developer and should not be relied upon as final. The actual area may vary from the stated area and the developer reserves the right to make therevisions/alterations, at its absolute discretion, without any liability whatsoever.



UNIT - 103

2 BEDROOM - LEVEL-01
GROSS AREA 2387.72 sq ft
221.83 sqm

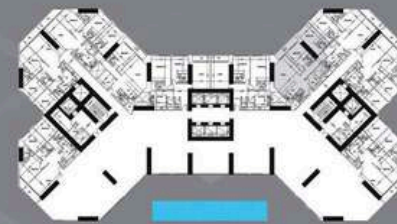


DISCLAIMER:
All measurements are indicative and are for marketing purposes only. All efforts have been made to ensure their accuracy, however these layouts are subject to change at the discretion of the developer and should not be relied upon as final. The actual area may vary from the stated area and the developer reserves the right to make therevisions/alterations, at its absolute discretion, without any liability whatsoever.

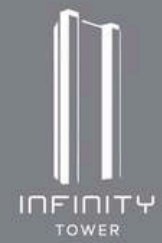


UNIT - 104

2 BEDROOM - LEVEL-01
GROSS AREA 2725.25 sq ft
253.18 sqm

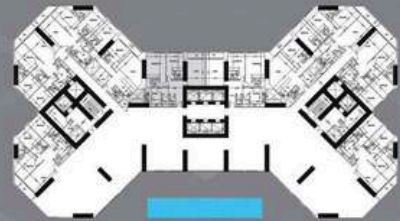


DISCLAIMER:
All measurements are indicative and are for marketing purposes only. All efforts have been made to ensure their accuracy, however these layouts are subject to change at the discretion of the developer and should not be relied upon as final. The actual area may vary from the stated area and the developer reserves the right to make therevisions/alterations, at its absolute discretion, without any liability whatsoever.



UNIT - 106

2 BEDROOM - LEVEL-01
GROSS AREA 3761.95 sq.ft
349.50 sqm

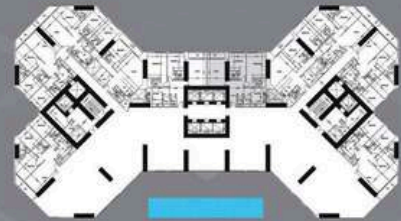


DISCLAIMER:
All measurements are indicative and are for marketing purposes only. All efforts have been made to ensure their accuracy, however these layouts are subject to change at the discretion of the developer and should not be relied upon as final. The actual area may vary from the stated area and the developer reserves the right to make therevisions/alterations, at its absolute discretion, without any liability whatsoever.



UNIT - 105

2 BEDROOM - LEVEL-01
GROSS AREA 3762.11 sq.ft
349.51 sqm

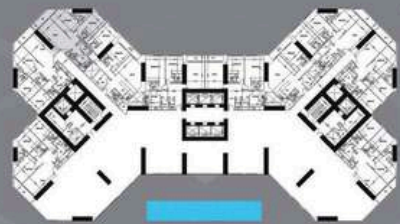


DISCLAIMER:
All measurements are indicative and are for marketing purposes only. All efforts have been made to ensure their accuracy, however these layouts are subject to change at the discretion of the developer and should not be relied upon as final. The actual area may vary from the stated area and the developer reserves the right to make therevisions/alterations, at its absolute discretion, without any liability whatsoever.



UNIT - 108

2 BEDROOM - LEVEL-01
GROSS AREA 2387.72 sq ft
221.83 sqm

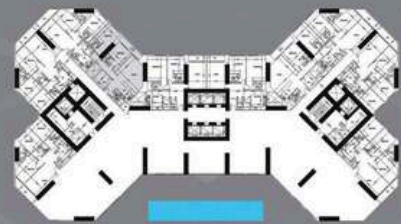


DISCLAIMER:
All measurements are indicative and are for marketing purposes only. All efforts have been made to ensure their accuracy, however these layouts are subject to change at the discretion of the developer and should not be relied upon as final. The actual area may vary from the stated area and the developer reserves the right to make therevisions/alterations, at its absolute discretion, without any liability whatsoever.

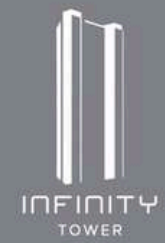


UNIT - 107

2 BEDROOM - LEVEL-01
GROSS AREA 2651.83 sq ft
246.36 sqm

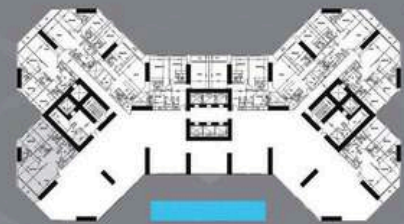


DISCLAIMER:
All measurements are indicative and are for marketing purposes only. All efforts have been made to ensure their accuracy, however these layouts are subject to change at the discretion of the developer and should not be relied upon as final. The actual area may vary from the stated area and the developer reserves the right to make therevisions/alterations, at its absolute discretion, without any liability whatsoever.

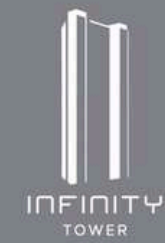


UNIT - 110

3 BEDROOM - LEVEL-01
GROSS AREA 3463.56 sq.ft
321.78 sqm

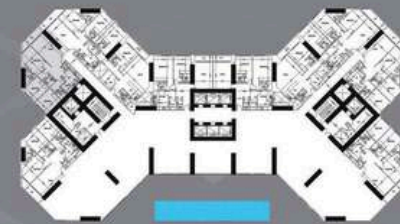


DISCLAIMER:
All measurements are indicative and are for marketing purposes only. All efforts have been made to ensure their accuracy, however these layouts are subject to change at the discretion of the developer and should not be relied upon as final. The actual area may vary from the stated area and the developer reserves the right to make therevisions/alterations, at its absolute discretion, without any liability whatsoever.



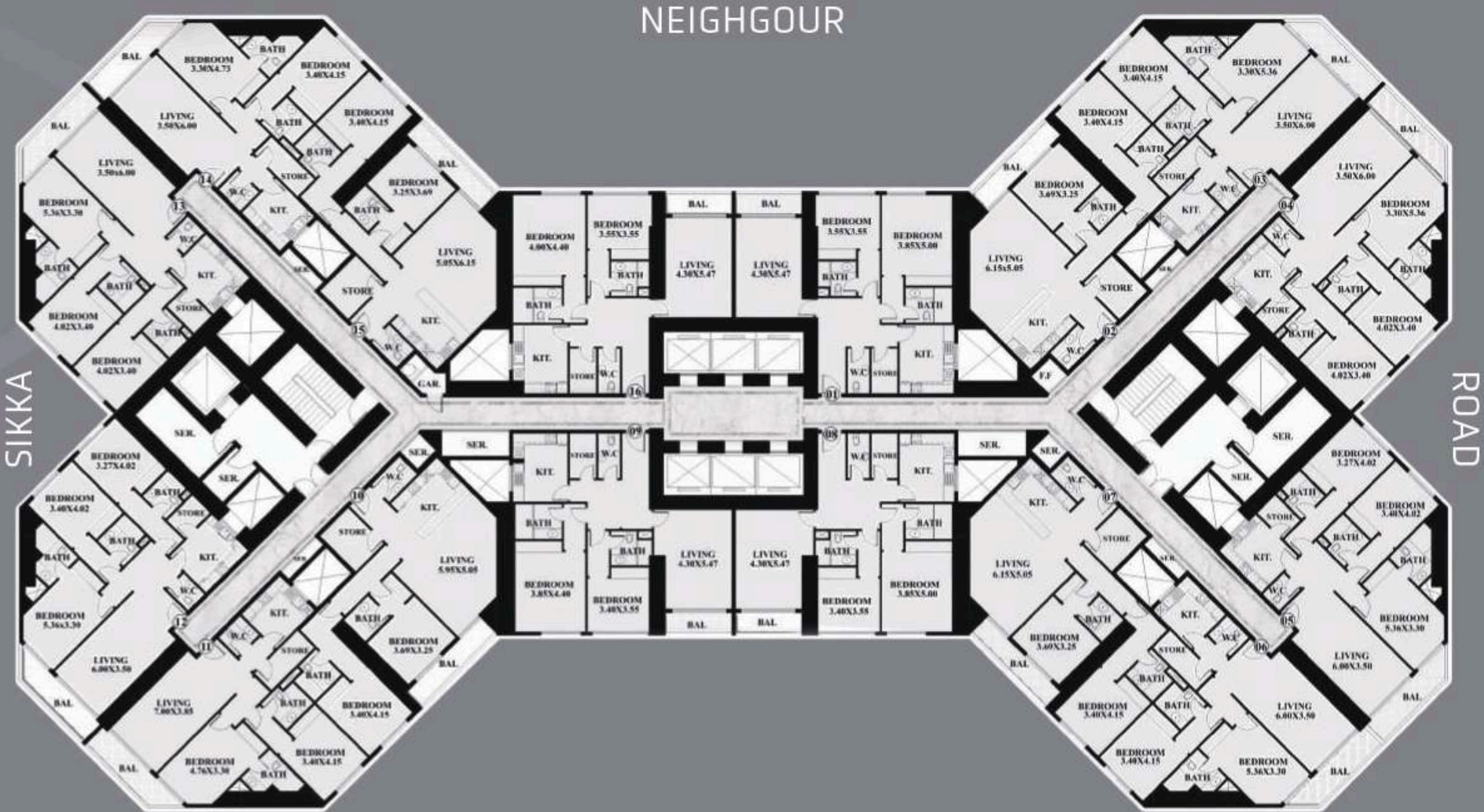
UNIT - 109

3 BEDROOM - LEVEL-01
GROSS AREA 3454.61 sq.ft
320.94 sqm



DISCLAIMER:
All measurements are indicative and are for marketing purposes only. All efforts have been made to ensure their accuracy, however these layouts are subject to change at the discretion of the developer and should not be relied upon as final. The actual area may vary from the stated area and the developer reserves the right to make therevisions/alterations, at its absolute discretion, without any liability whatsoever.

TYPICAL FLOOR PLAN



ROAD

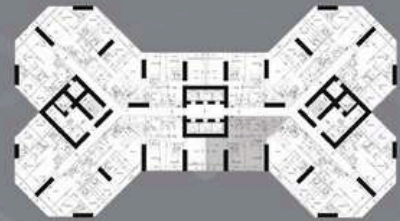
An aerial photograph of a city skyline, featuring several tall skyscrapers. A large, light-colored diamond shape is superimposed over the center of the image, framing a cluster of buildings. The text "LEVEL TYPICAL" is centered within this diamond shape.

LEVEL TYPICAL



UNIT - 01

2 BEDROOM - LEVEL TYPICAL
GROSS AREA 1772.89 sq ft
164.71 sqm

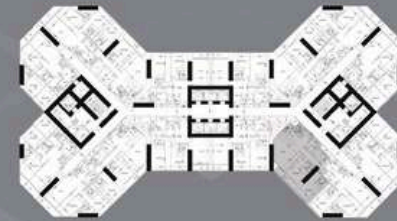


DISCLAIMER:
All measurements are indicative and are for marketing purposes only. All efforts have been made to ensure their accuracy, however these layouts are subject to change at the discretion of the developer and should not be relied upon as final. The actual area may vary from the stated area and the developer reserves the right to make therevisions/alterations, at its absolute discretion, without any liability whatsoever.

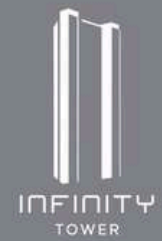


UNIT - 02

2 BEDROOM - LEVEL TYPICAL
GROSS AREA 1831.60 sq ft
170.16 sqm

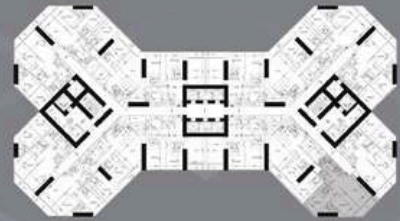


DISCLAIMER:
All measurements are indicative and are for marketing purposes only. All efforts have been made to ensure their accuracy, however these layouts are subject to change at the discretion of the developer and should not be relied upon as final. The actual area may vary from the stated area and the developer reserves the right to make therevisions/alterations, at its absolute discretion, without any liability whatsoever.



UNIT - 03

2 BEDROOM - LEVEL TYPICAL
GROSS AREA 1699.17 sq.ft
157.86 sqm

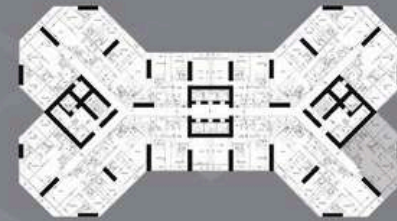


DISCLAIMER:
All measurements are indicative and are for marketing purposes only. All efforts have been made to ensure their accuracy, however these layouts are subject to change at the discretion of the developer and should not be relied upon as final. The actual area may vary from the stated area and the developer reserves the right to make therevisions/alterations, at its absolute discretion, without any liability whatsoever.



UNIT - 04

3 BEDROOM - LEVEL TYPICAL
GROSS AREA 2039.88 sq.ft
189.51 sqm

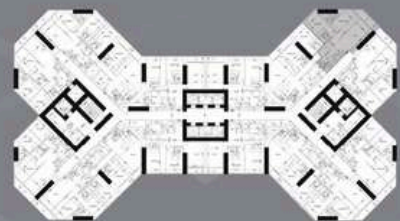


DISCLAIMER:
All measurements are indicative and are for marketing purposes only. All efforts have been made to ensure their accuracy, however these layouts are subject to change at the discretion of the developer and should not be relied upon as final. The actual area may vary from the stated area and the developer reserves the right to make therevisions/alterations, at its absolute discretion, without any liability whatsoever.



UNIT - 06

2 BEDROOM - LEVEL TYPICAL
GROSS AREA 1714.19 sq.ft
159.25 sqm

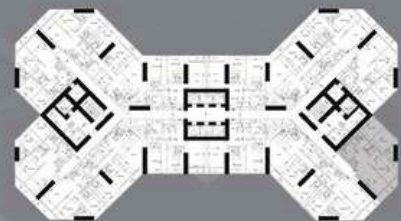


DISCLAIMER:
All measurements are indicative and are for marketing purposes only. All efforts have been made to ensure their accuracy, however these layouts are subject to change at the discretion of the developer and should not be relied upon as final. The actual area may vary from the stated area and the developer reserves the right to make therevisions/alterations, at its absolute discretion, without any liability whatsoever.



UNIT - 05

3 BEDROOM - LEVEL TYPICAL
GROSS AREA 2133.17 sq.ft
198.38 sqm

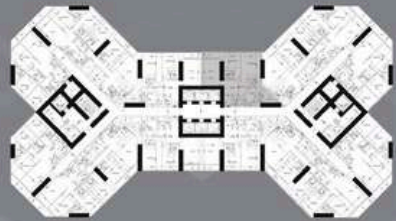


DISCLAIMER:
All measurements are indicative and are for marketing purposes only. All efforts have been made to ensure their accuracy, however these layouts are subject to change at the discretion of the developer and should not be relied upon as final. The actual area may vary from the stated area and the developer reserves the right to make therevisions/alterations, at its absolute discretion, without any liability whatsoever.



UNIT - 08

2 BEDROOM - LEVEL TYPICAL
GROSS AREA 1768.64 sq.ft
164.31 sqm

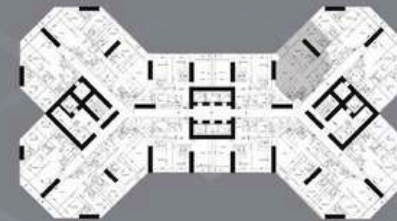


DISCLAIMER:
All measurements are indicative and are for marketing purposes only. All efforts have been made to ensure their accuracy, however these layouts are subject to change at the discretion of the developer and should not be relied upon as final. The actual area may vary from the stated area and the developer reserves the right to make therevisions/alterations, at its absolute discretion, without any liability whatsoever.

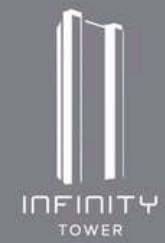


UNIT - 07

2 BEDROOM - LEVEL TYPICAL
GROSS AREA 1911.24 sq.ft
177.56 sqm

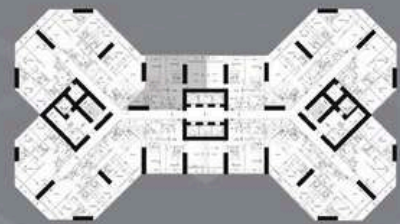


DISCLAIMER:
All measurements are indicative and are for marketing purposes only. All efforts have been made to ensure their accuracy, however these layouts are subject to change at the discretion of the developer and should not be relied upon as final. The actual area may vary from the stated area and the developer reserves the right to make therevisions/alterations, at its absolute discretion, without any liability whatsoever.



UNIT - 09

2 BEDROOM - LEVEL TYPICAL
GROSS AREA 1768.64 sq.ft
164.31 sqm

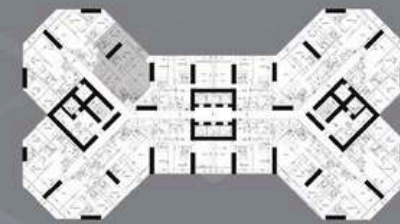


DISCLAIMER:
All measurements are indicative and are for marketing purposes only. All efforts have been made to ensure their accuracy, however these layouts are subject to change at the discretion of the developer and should not be relied upon as final. The actual area may vary from the stated area and the developer reserves the right to make therevisions/alterations, at its absolute discretion, without any liability whatsoever.



UNIT - 010

2 BEDROOM - LEVEL TYPICAL
GROSS AREA 1837.97 sq.ft
170.75 sqm

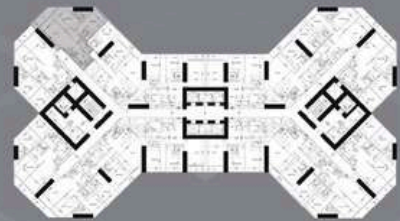


DISCLAIMER:
All measurements are indicative and are for marketing purposes only. All efforts have been made to ensure their accuracy, however these layouts are subject to change at the discretion of the developer and should not be relied upon as final. The actual area may vary from the stated area and the developer reserves the right to make therevisions/alterations, at its absolute discretion, without any liability whatsoever.



UNIT - 011

2 BEDROOM - LEVEL TYPICAL
GROSS AREA 1714.19 sq.ft
159.25 sqm

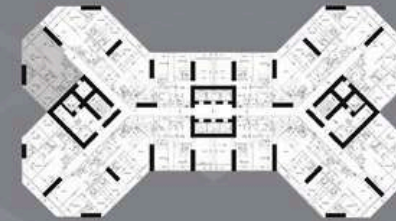


DISCLAIMER:
All measurements are indicative and are for marketing purposes only. All efforts have been made to ensure their accuracy, however these layouts are subject to change at the discretion of the developer and should not be relied upon as final. The actual area may vary from the stated area and the developer reserves the right to make therevisions/alterations, at its absolute discretion, without any liability whatsoever.



UNIT - 012

3 BEDROOM - LEVEL TYPICAL
GROSS AREA 2133.17 sq.ft
198.38 sqm

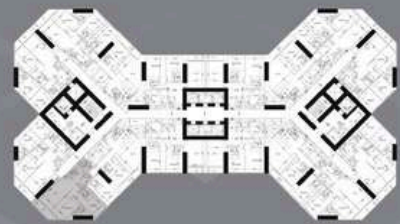


DISCLAIMER:
All measurements are indicative and are for marketing purposes only. All efforts have been made to ensure their accuracy, however these layouts are subject to change at the discretion of the developer and should not be relied upon as final. The actual area may vary from the stated area and the developer reserves the right to make therevisions/alterations, at its absolute discretion, without any liability whatsoever.



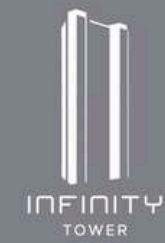
UNIT - 014

2 BEDROOM - LEVEL TYPICAL
GROSS AREA 1699.17 sq.ft
157.86 sqm



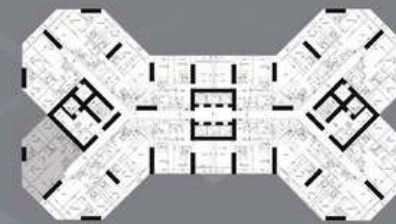
DISCLAIMER:

All measurements are indicative and are for marketing purposes only. All efforts have been made to ensure their accuracy, however these layouts are subject to change at the discretion of the developer and should not be relied upon as final. The actual area may vary from the stated area and the developer reserves the right to make therevisions/alterations, at its absolute discretion, without any liability whatsoever.



UNIT - 013

3 BEDROOM - LEVEL TYPICAL
GROSS AREA 2039.88 sq.ft
189.51 sqm



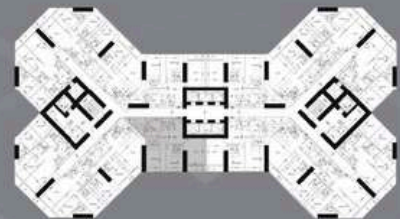
DISCLAIMER:

All measurements are indicative and are for marketing purposes only. All efforts have been made to ensure their accuracy, however these layouts are subject to change at the discretion of the developer and should not be relied upon as final. The actual area may vary from the stated area and the developer reserves the right to make therevisions/alterations, at its absolute discretion, without any liability whatsoever.



UNIT - 016

2 BEDROOM - LEVEL TYPICAL
GROSS AREA 1772.89 sq ft
164.71 sqm

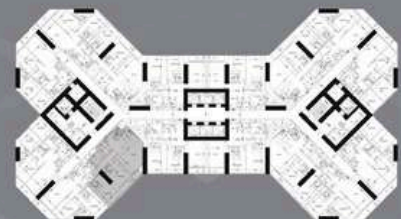


DISCLAIMER:
All measurements are indicative and are for marketing purposes only. All efforts have been made to ensure their accuracy, however these layouts are subject to change at the discretion of the developer and should not be relied upon as final. The actual area may vary from the stated area and the developer reserves the right to make therevisions/alterations, at its absolute discretion, without any liability whatsoever.



UNIT - 015

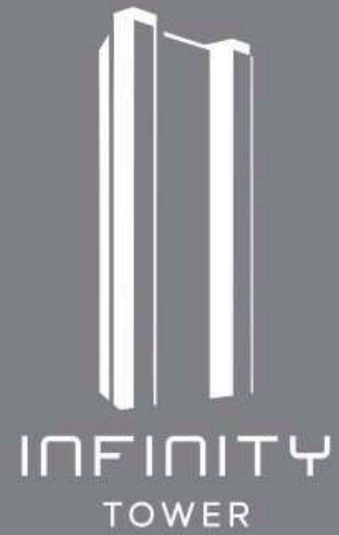
2 BEDROOM - LEVEL TYPICAL
GROSS AREA 1831.60 sq ft
170.16 sqm



DISCLAIMER:
All measurements are indicative and are for marketing purposes only. All efforts have been made to ensure their accuracy, however these layouts are subject to change at the discretion of the developer and should not be relied upon as final. The actual area may vary from the stated area and the developer reserves the right to make therevisions/alterations, at its absolute discretion, without any liability whatsoever.

An aerial, high-angle photograph of a city skyline, likely New York City, showing several prominent skyscrapers. A large, light-colored diamond shape is superimposed over the lower half of the image, with its vertices pointing towards the corners. The text "10TH, 25TH, 40TH" is centered within this diamond shape.

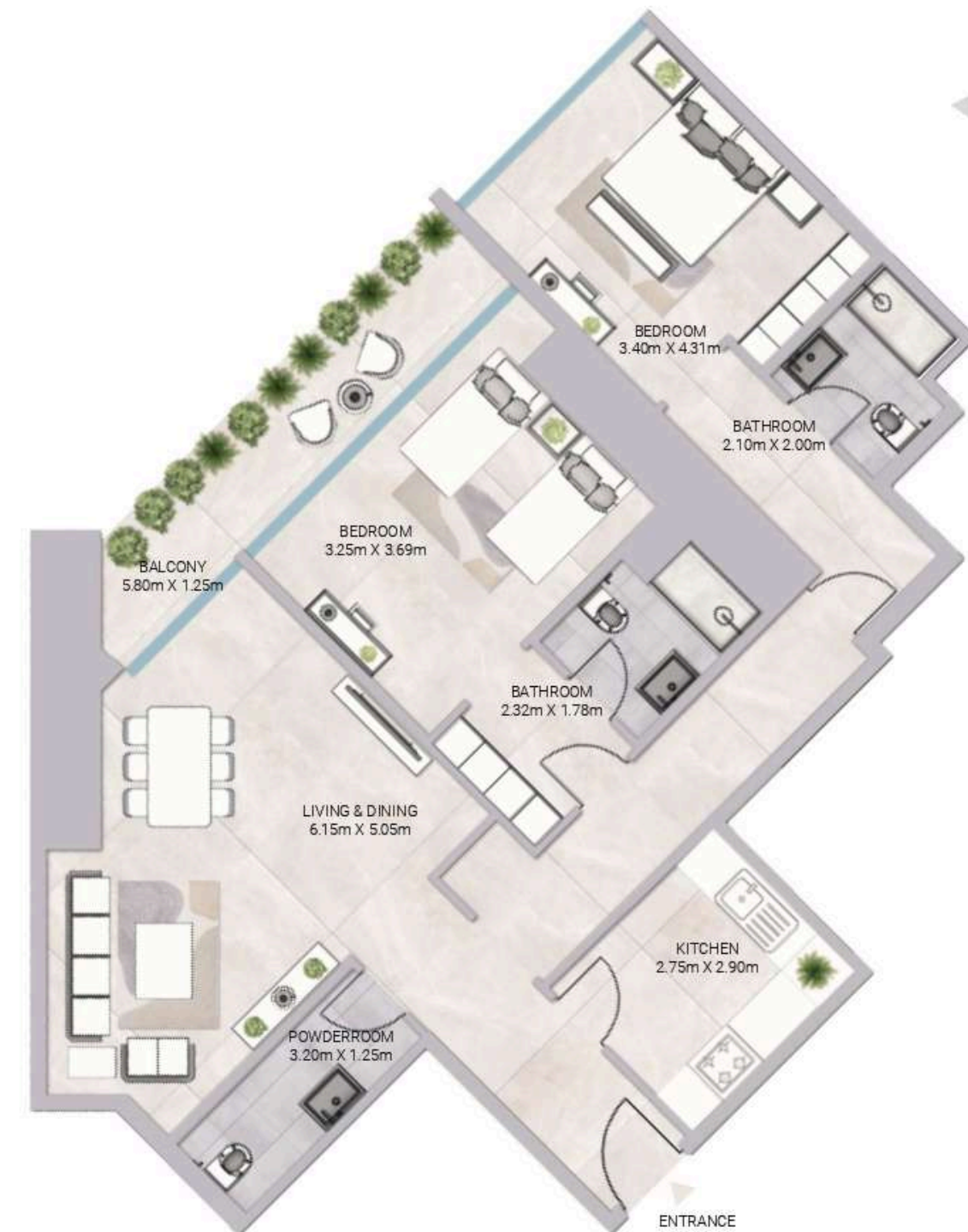
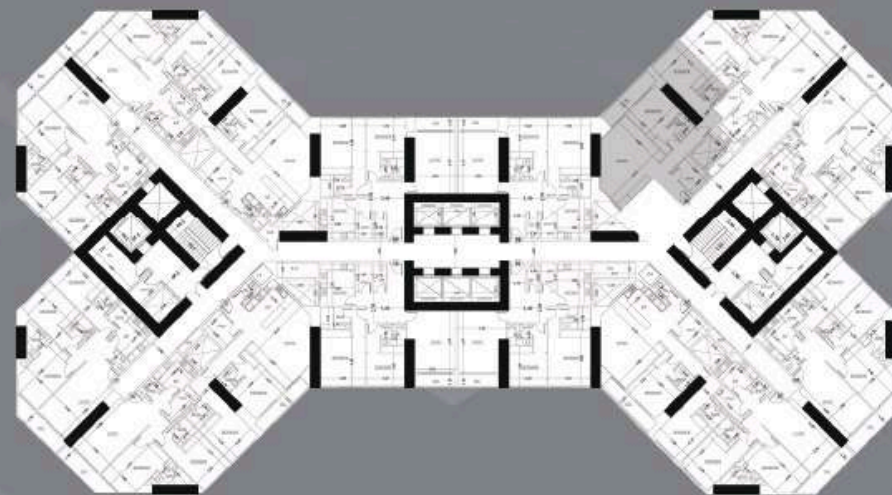
10TH, 25TH, 40TH



UNIT - 07

2 BEDROOM - LEVEL TYPICAL

GROSS AREA 1745.89 sq.ft
 162.20 sqm



DISCLAIMER:

All measurements are indicative and are for marketing purposes only. All efforts have been made to ensure their accuracy, however these layouts are subject to change at the discretion of the developer and should not be relied upon as final. The actual area may vary from the stated area and the developer reserves the right to make therevisions/alterations, at its absolute discretion, without any liability whatsoever.



Where Prestige Meets Property



At Majara Luxury Real Estate L.L.C., we redefine the art of luxury living. Based in the heart of the UAE, we specialize in curating exceptional real estate experiences tailored to the needs of discerning investors, end-users, and global clientele.



With a refined portfolio of premium properties across all seven Emirates, our expertise lies in both off-plan and ready-to-move assets, offering opportunities that blend architectural excellence with investment potential.



We are more than just property consultants & we are partners in your journey to finding the perfect home, investment, or lifestyle. Driven by integrity, market insight, and personalized service, Majara stands as a trusted name in an ever-evolving market.

Contact Us :

Phone: +971564452803

Email: info@majararealestate.com

<https://majararealestate.com/>