



**Hillside Residence: A home designed for elevated living in Dubai.**



A wide-angle photograph of the Dubai skyline at sunset. The Burj Khalifa is the central focus, towering over other skyscrapers. The sun is low on the horizon, creating a warm orange glow and reflecting on the water in the foreground. A sailboat is visible in the water. The sky is filled with soft, orange-tinted clouds.

# MAJARA LUXURY REAL ESTATE LLC

Head Office Level 36-01, Po Box :124382 , Trade Center 1, Sheikh Zayed Road , Burj Al Salam Tower Dubai UAE

**Majara Presents: Hillside Residences, Dubai**



A contemporary landmark found between ambition  
and nature







# Where Calm Reigns Above

**Hillside: Calm Above the City.**

A contemporary refuge where life rises to a peaceful rhythm.




# Hillside — where elevated living becomes reality.

Escape to Hillside, where thoughtful design transforms everyday living into a serene experience. Relax, recharge, and immerse yourself in an environment crafted for peace and introspection.

Explore the design philosophy behind Hillside, where every element is carefully considered. Hillside lives its name, where form and function merge.







**Experience Hillside — where luxury, comfort,  
and calm converge.**

Hillside offers a refined way of living, where exceptional comfort, thoughtful services, and serene spaces create a sanctuary of complete tranquility.

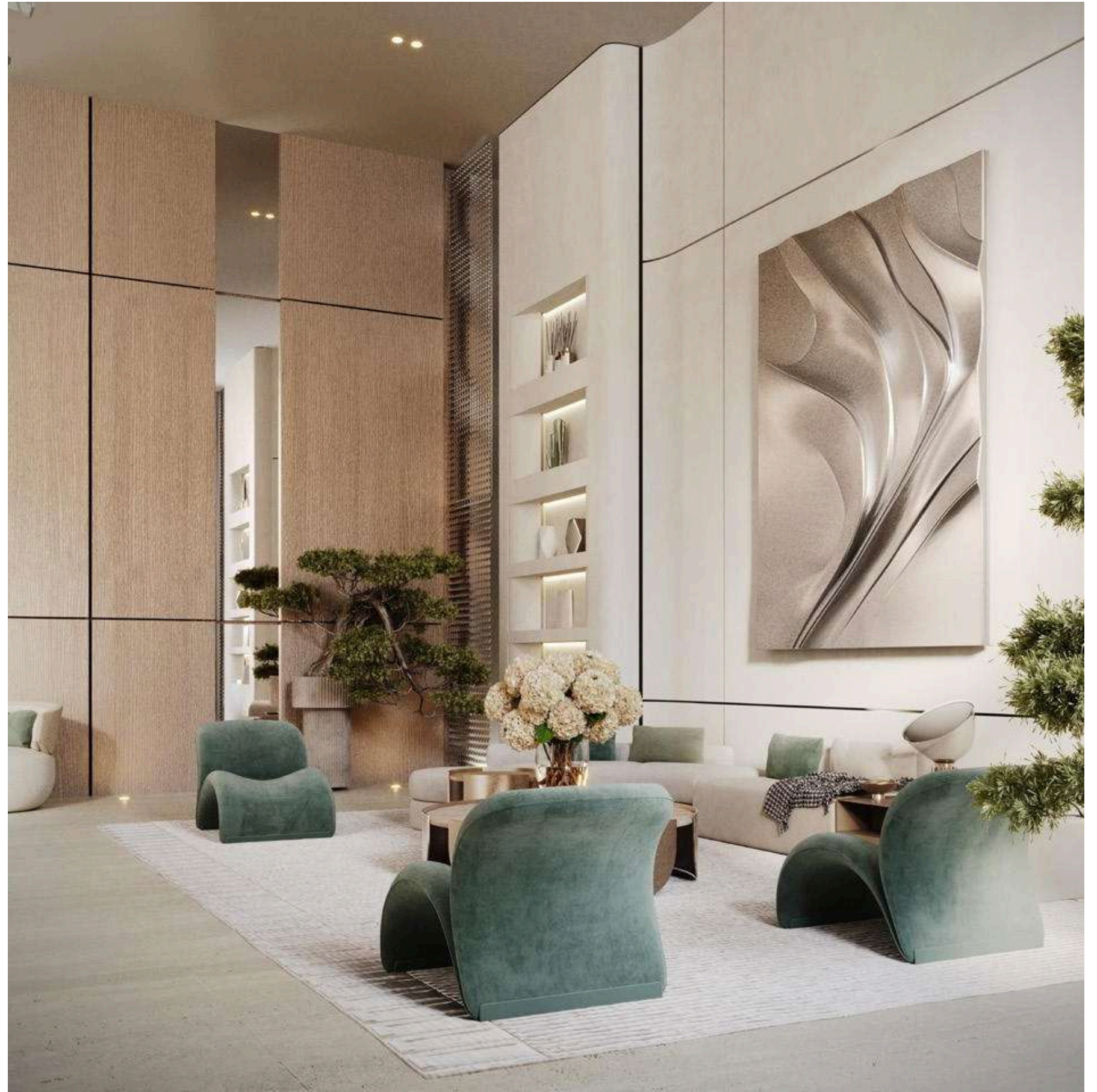


An aerial photograph of a modern, multi-story building with a distinctive stepped design. The building features numerous balconies with glass railings and a rooftop pool area with lounge furniture. It is situated next to a large, green park with many palm trees and winding paths. In the background, a dense urban skyline with various skyscrapers is visible under a clear sky.

# A Path to Serenity

Linger. Observe the gentle slope, the shimmer, and reflections, and the precise details that hint at artistry. Here, beauty is tangible.











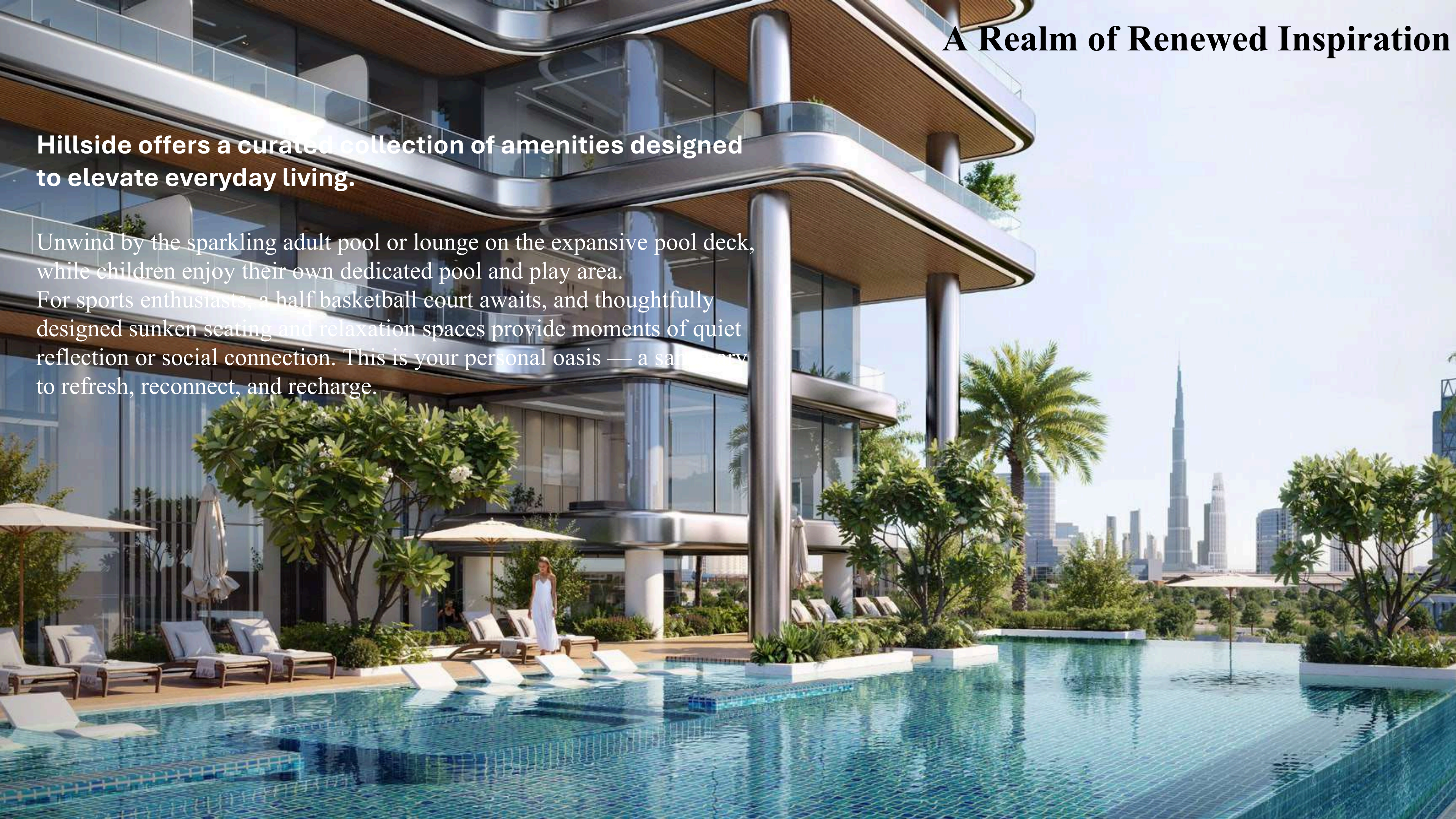




# A Realm of Renewed Inspiration

**Hillside offers a curated collection of amenities designed to elevate everyday living.**

Unwind by the sparkling adult pool or lounge on the expansive pool deck, while children enjoy their own dedicated pool and play area. For sports enthusiasts, a half basketball court awaits, and thoughtfully designed sunken seating and relaxation spaces provide moments of quiet reflection or social connection. This is your personal oasis — a sanctuary to refresh, reconnect, and recharge.



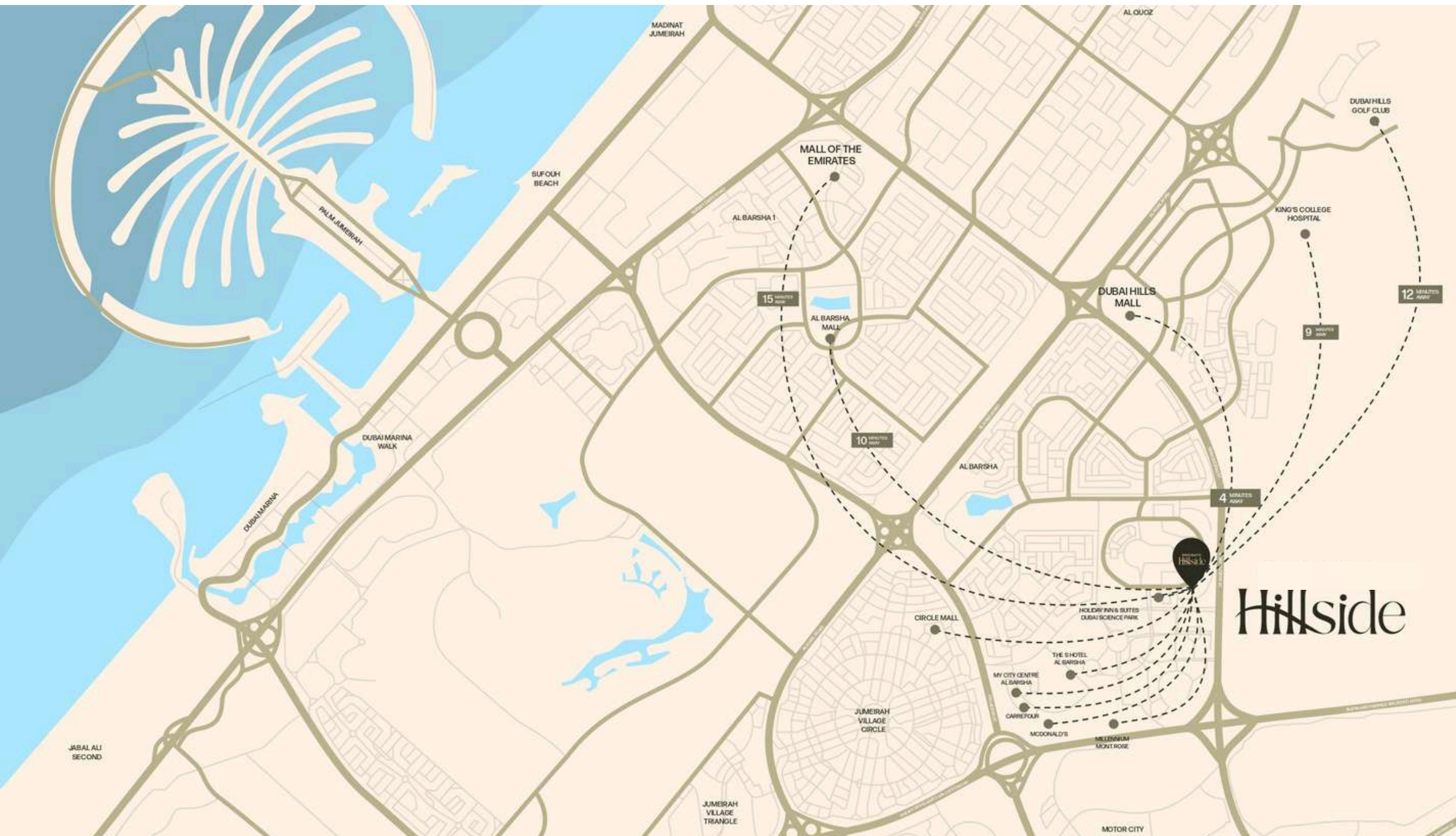












## The City Made Seamless

Hillside offers excellent links within Dubai Science Park, making the rest of the city easily accessible. Its strategic location provides quick access to major roads like E44 Al Khail Road, Umm Suqeim Road, and E11 Sheikh Zayed Road. A future Metro Line nearby will enhance travel further. Key landmarks such as Dubai Hills Mall are mere minutes away, and Mall of the Emirates is reachable in nine minutes.

### Nearby Amenities



Dubai Hills Mall



Palm Jumeirah



Burj Al Arab



Butterfly Garden



Miracle Garden



Global Village

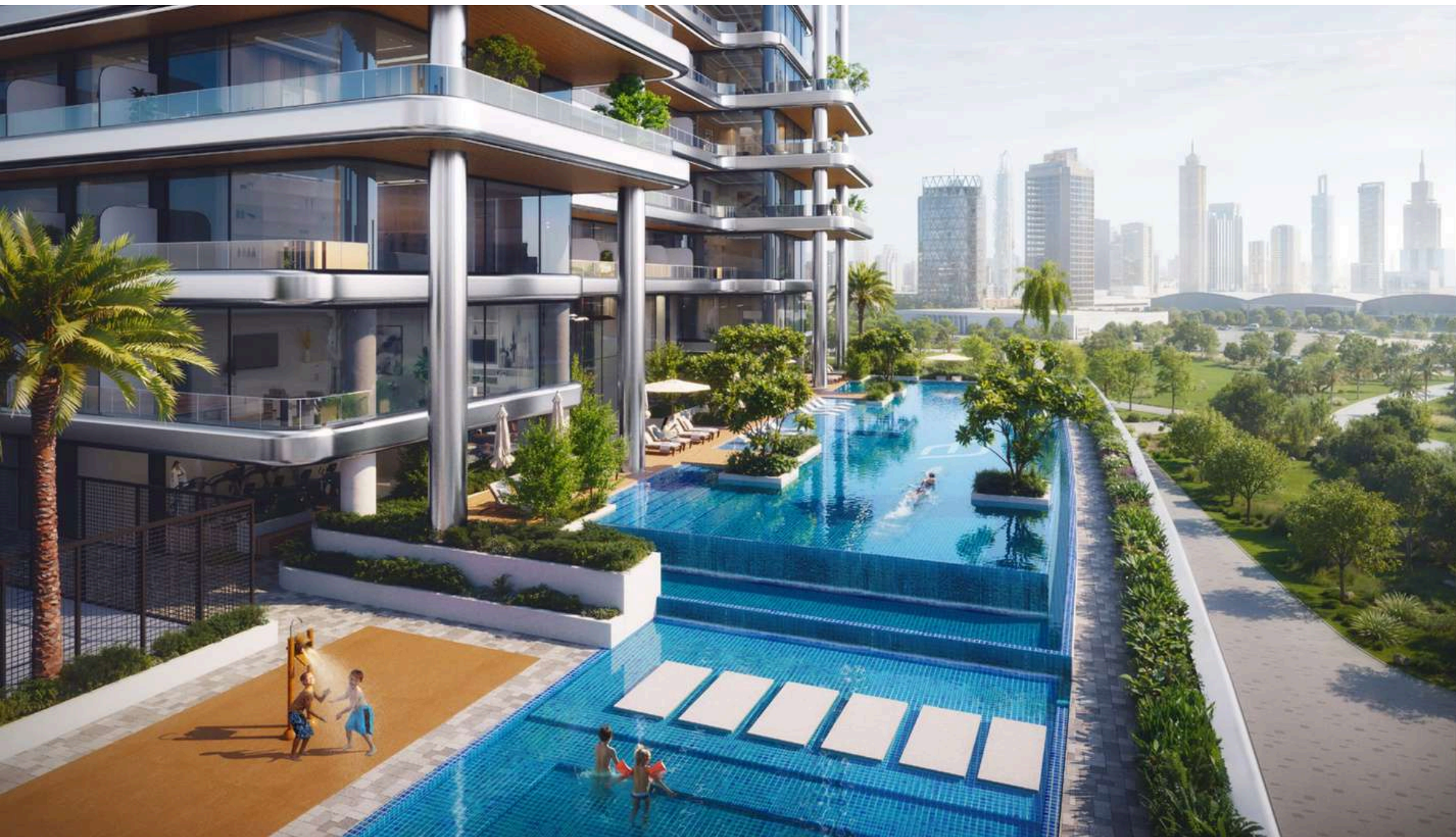


Jumeirah Golf Estates



IMG Worlds of Adventure





## Amenities



Kids play area



Adult pool



Seating areas



Kids pool



Half  
basketball court



Sunken seating



Pool deck



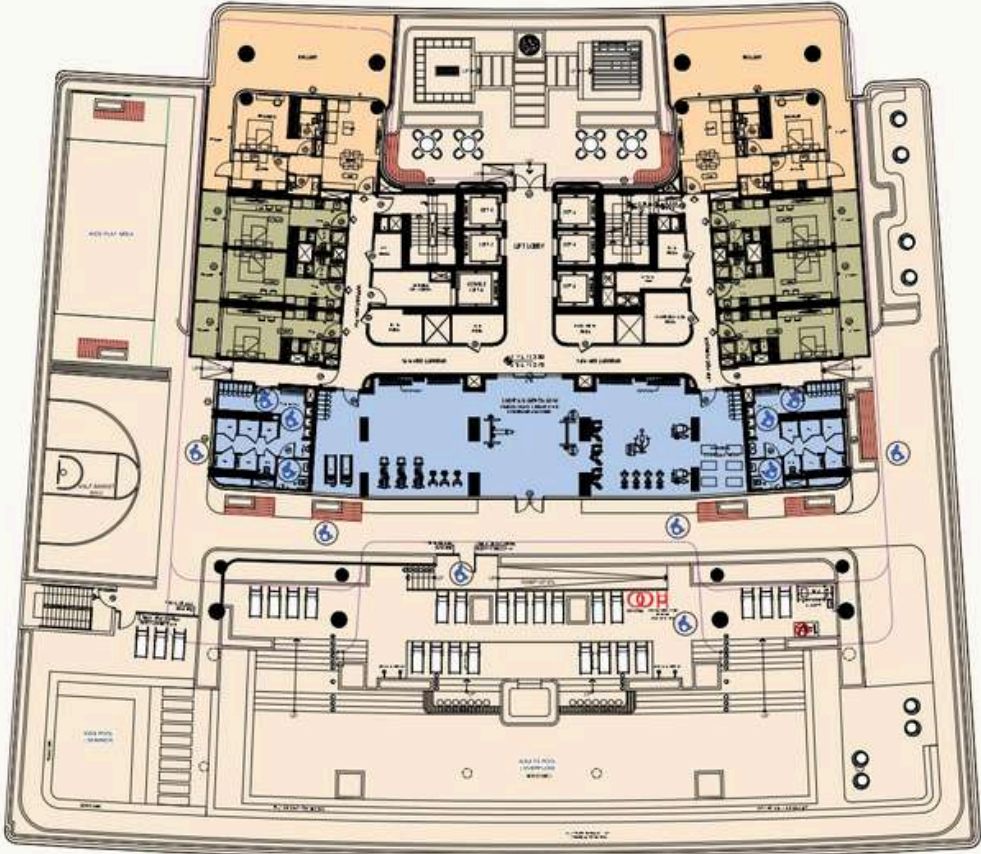
# Floor Plan





# Typical Floor Plan

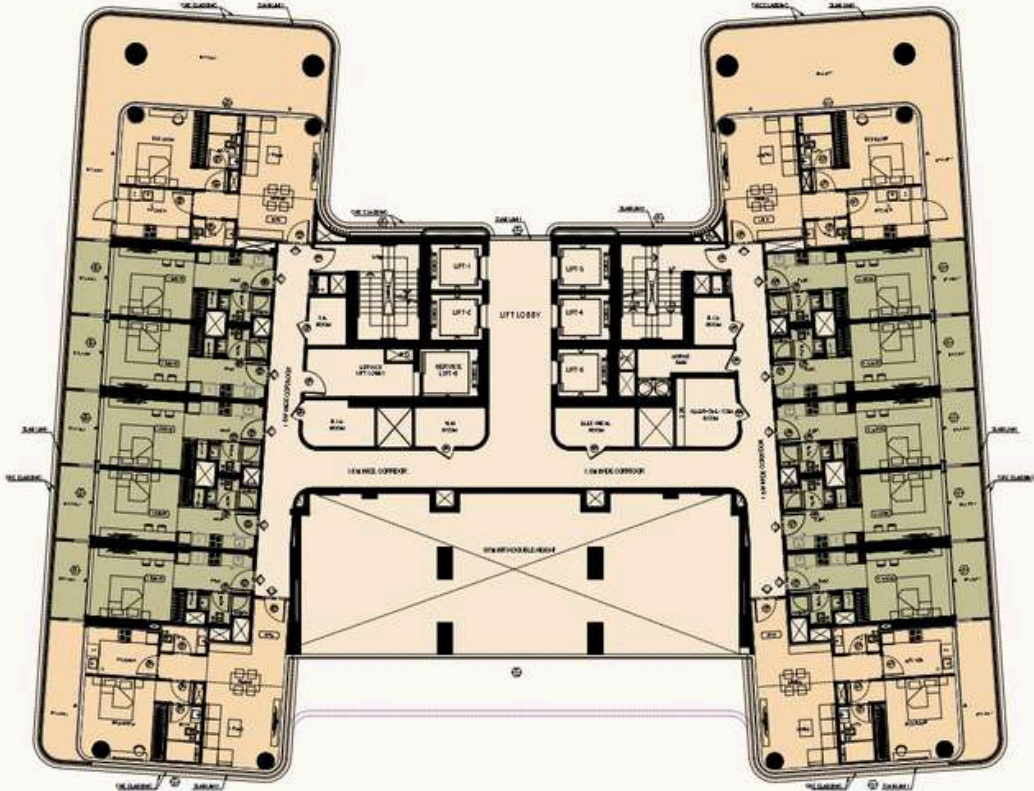
1<sup>st</sup> Floor Plan



- STUDIO
- 1 BEDROOM
- GYM

# Typical Floor Plan

2<sup>nd</sup> Floor Plan

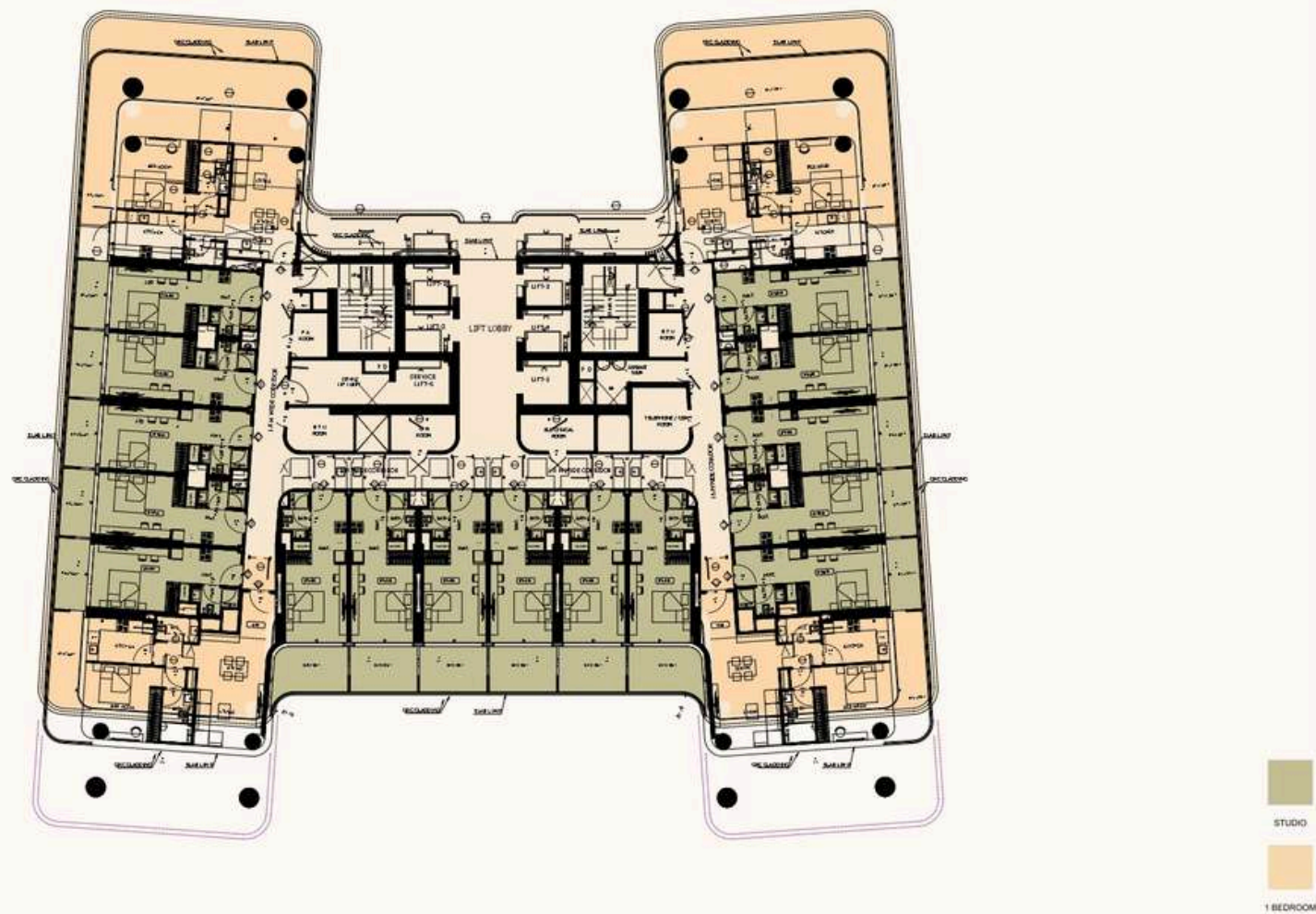


- STUDIO
- 1 BEDROOM



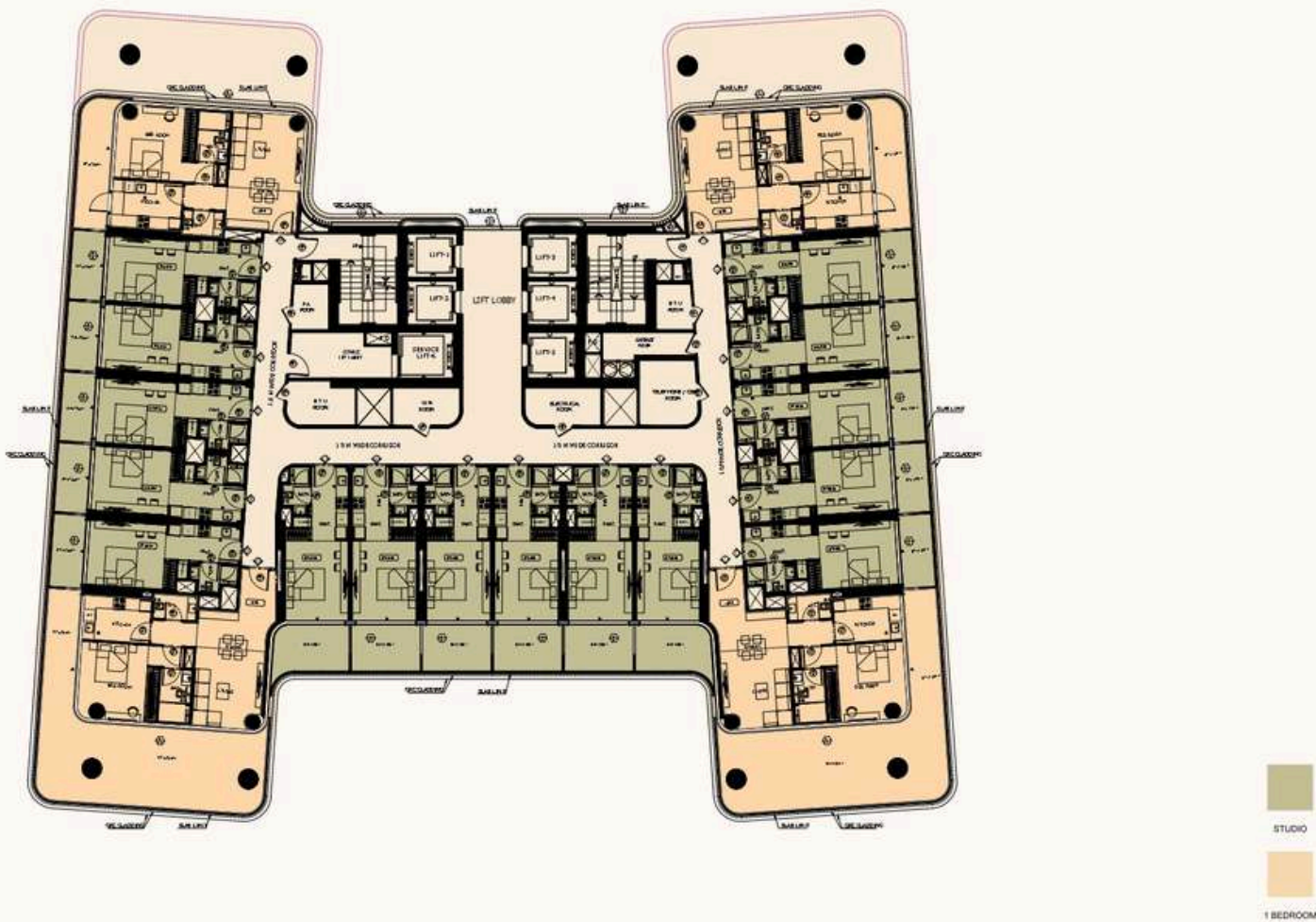
# Typical Floor Plan

3<sup>rd</sup> Floor Plan



# Typical Floor Plan

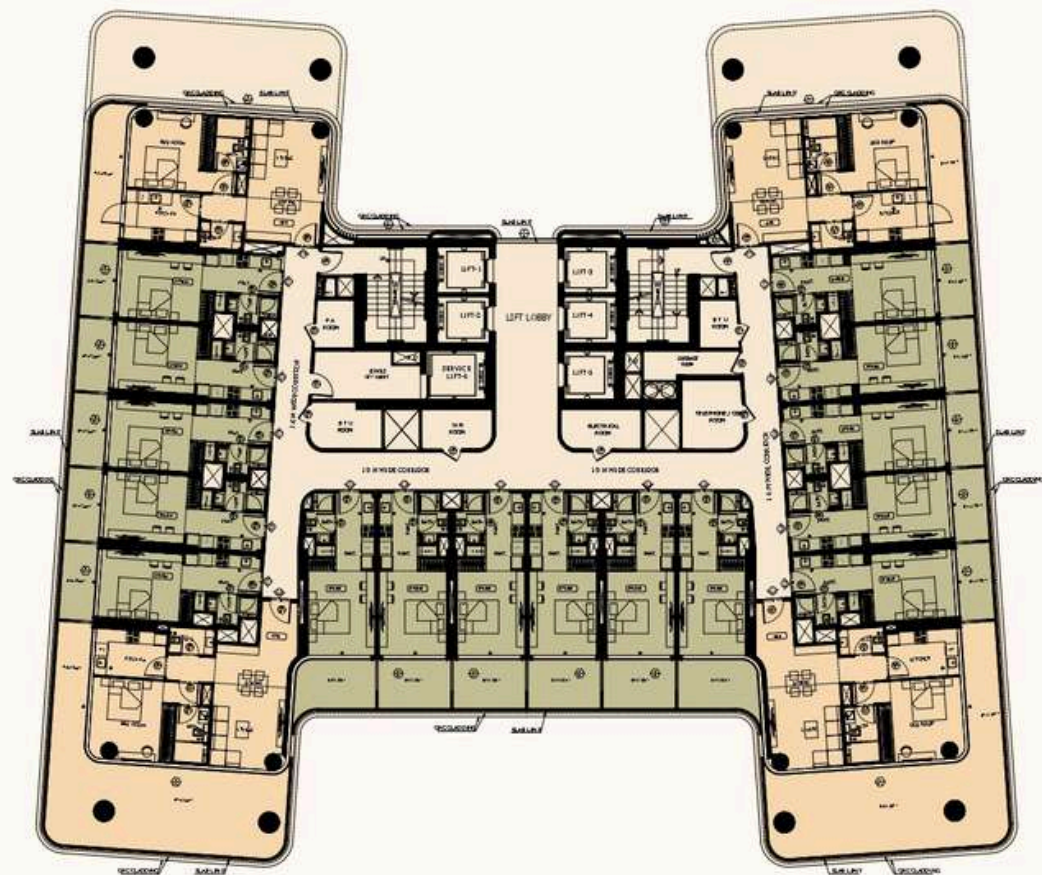
4<sup>th</sup> Floor Plan





# Typical Floor Plan

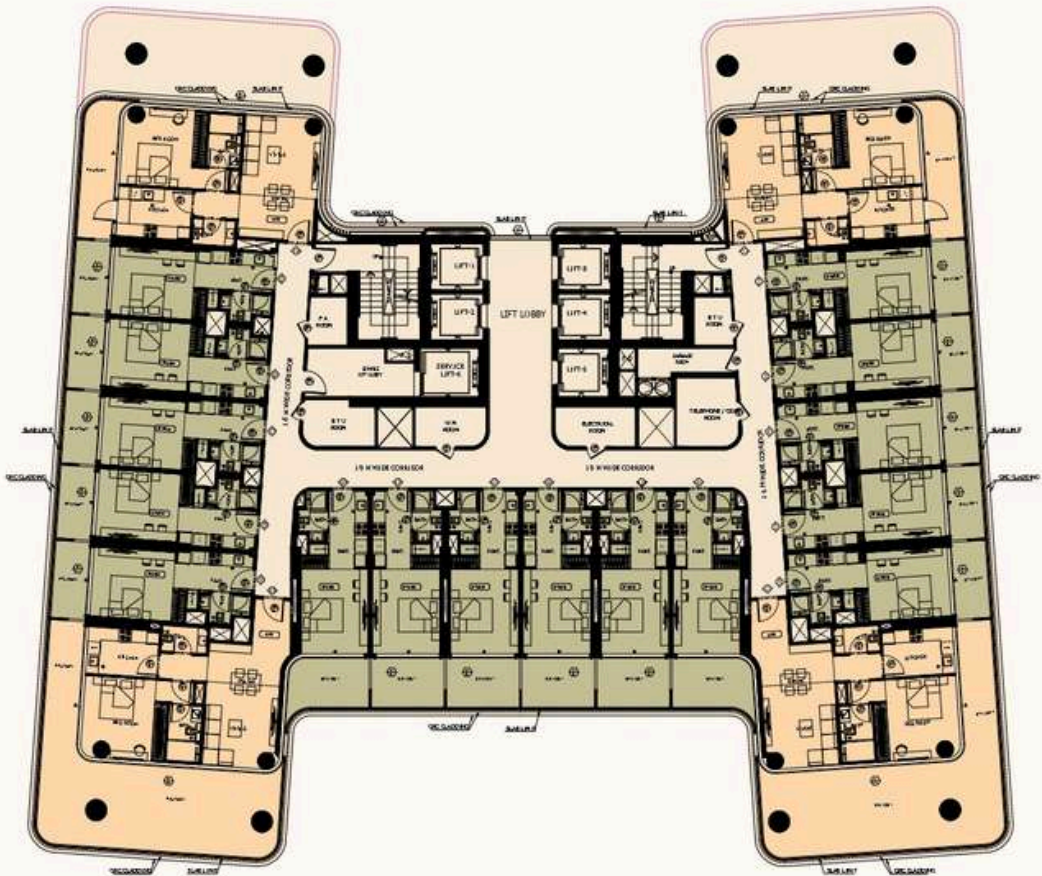
5<sup>th</sup> Floor Plan



STUDIO  
1 BEDROOM

# Typical Floor Plan

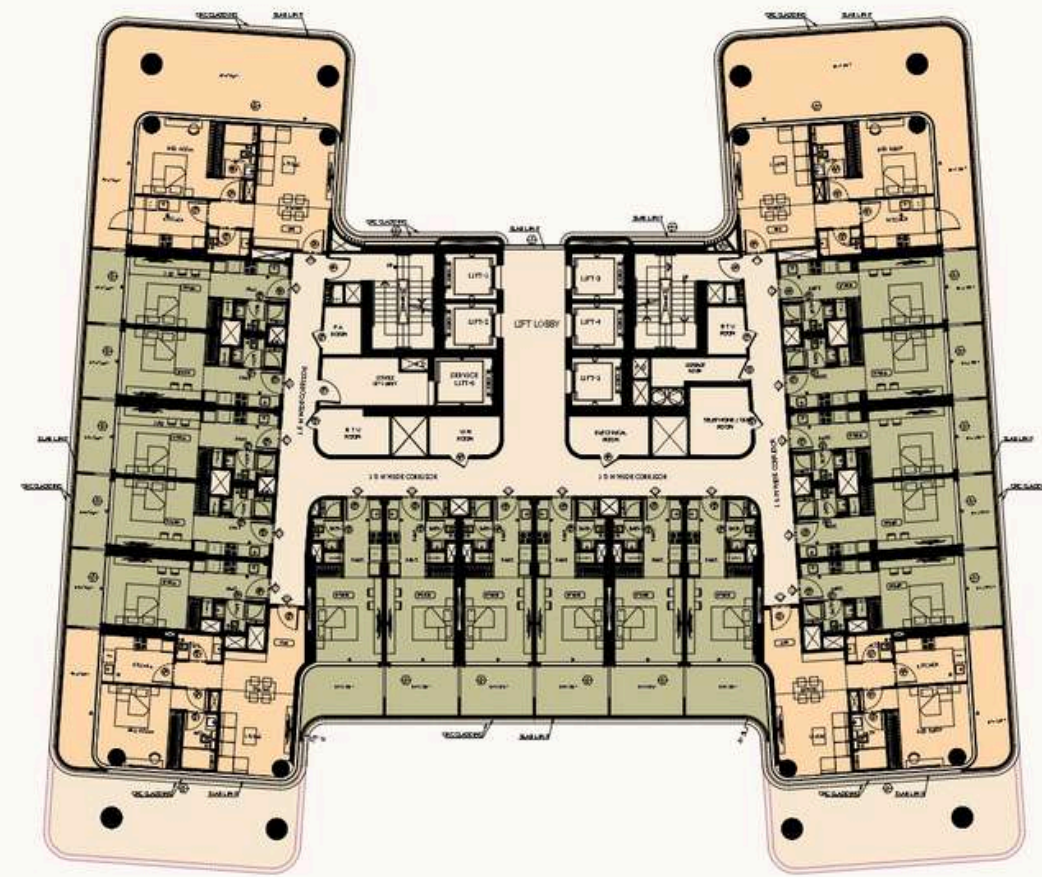
6<sup>th</sup> Floor Plan



STUDIO  
1 BEDROOM



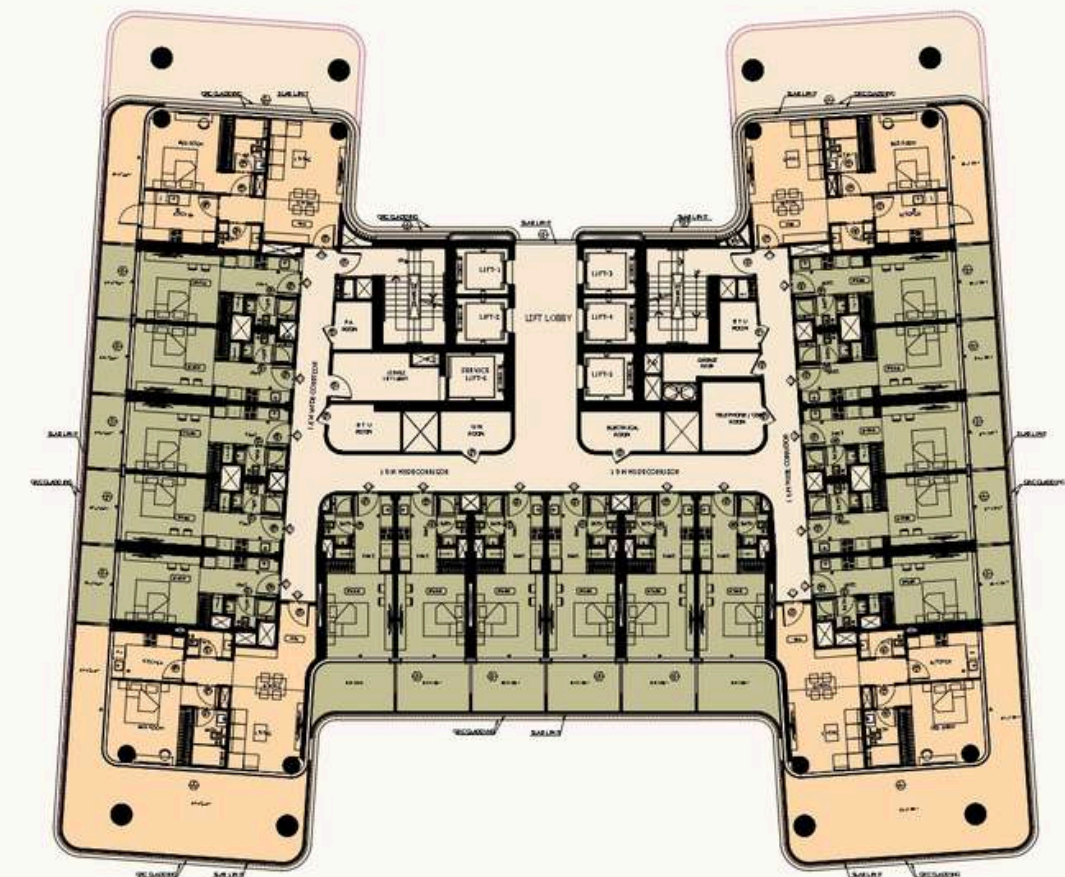
### 7<sup>th</sup>, 8<sup>th</sup> & 9<sup>th</sup> Floor Plan



STUDIO

1 BEDROOM

### 11<sup>th</sup> & 12<sup>th</sup> Floor Plan



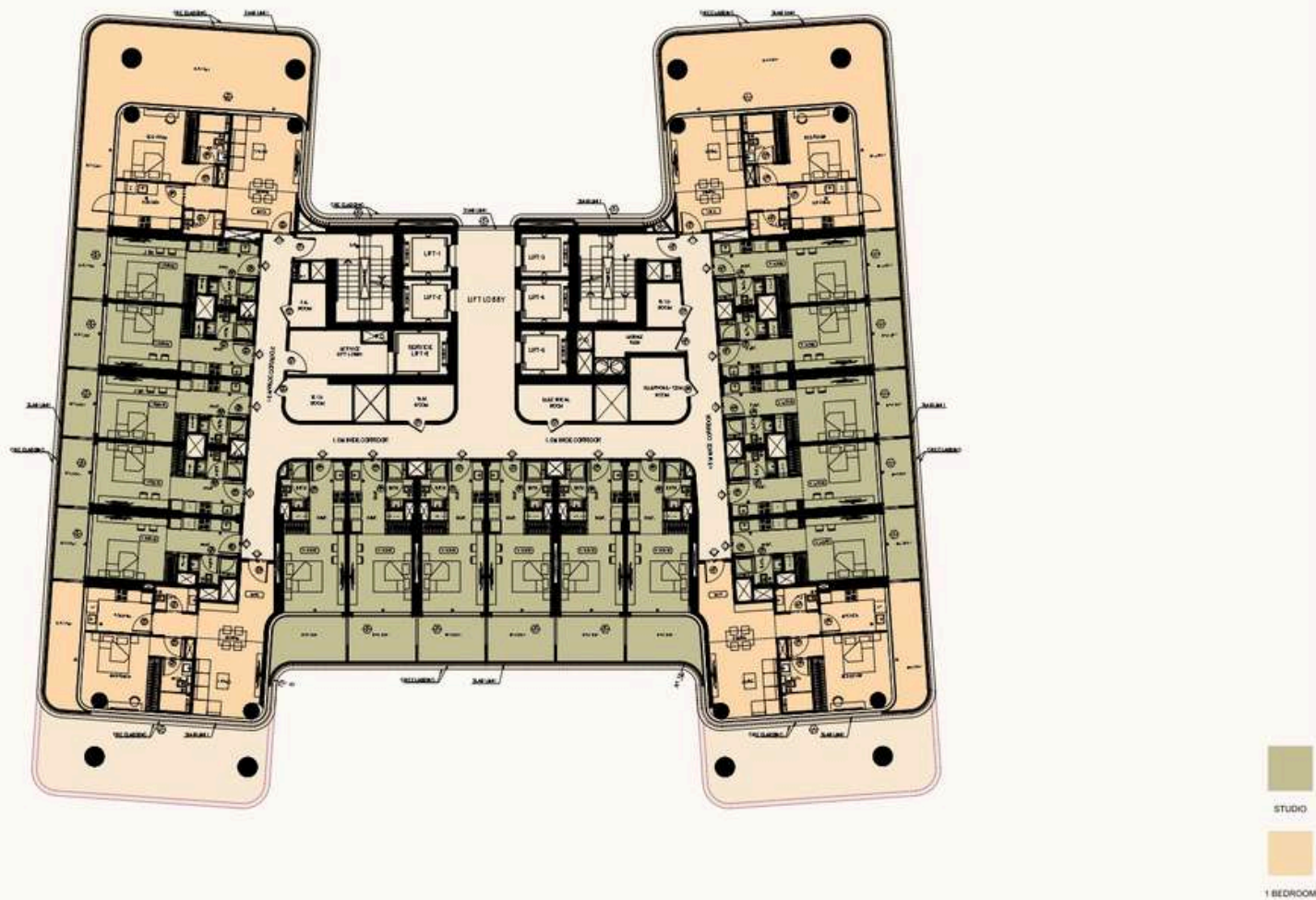
STUDIO

1 BEDROOM



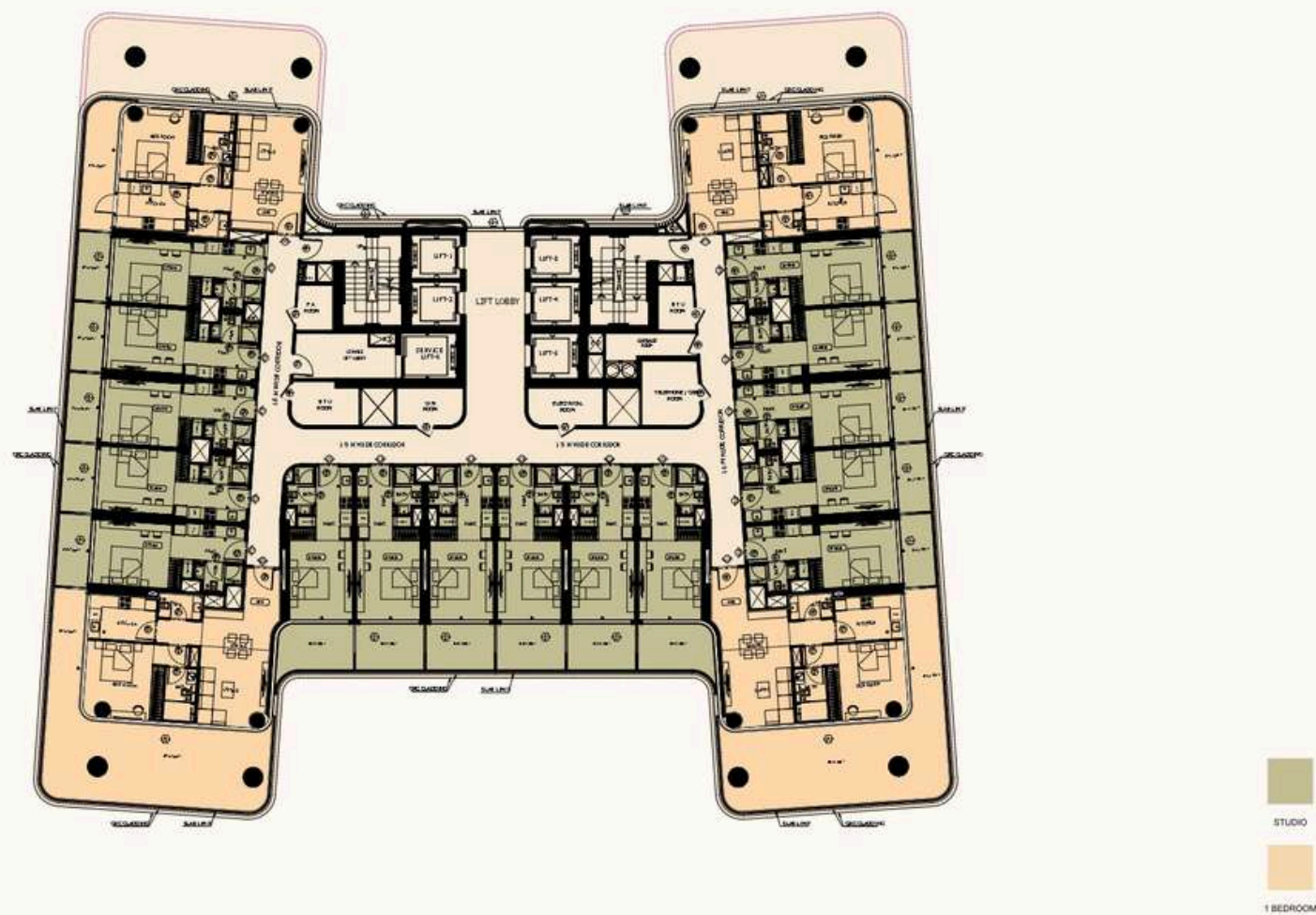
Typical Floor Plan

13<sup>th</sup>, 14<sup>th</sup> & 15<sup>th</sup> Floor Plan



Typical Floor Plan

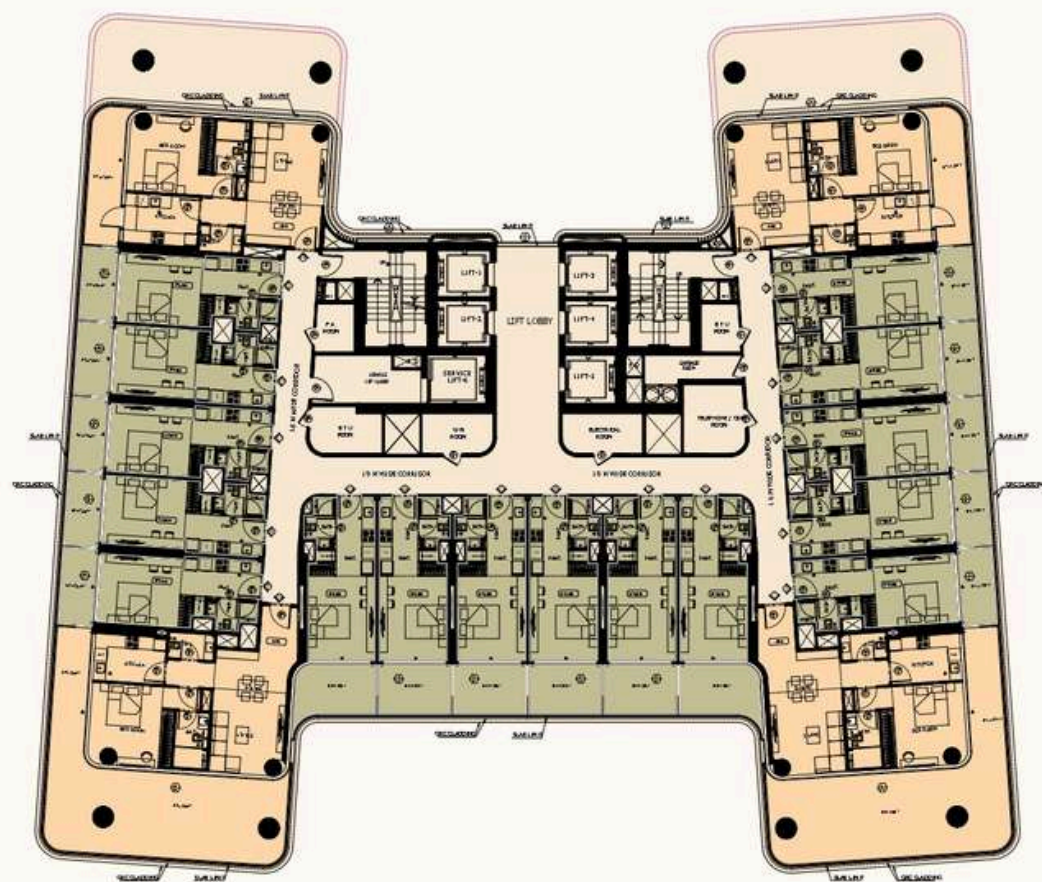
16<sup>th</sup> & 17<sup>th</sup> Floor Plan





# Typical Floor Plan

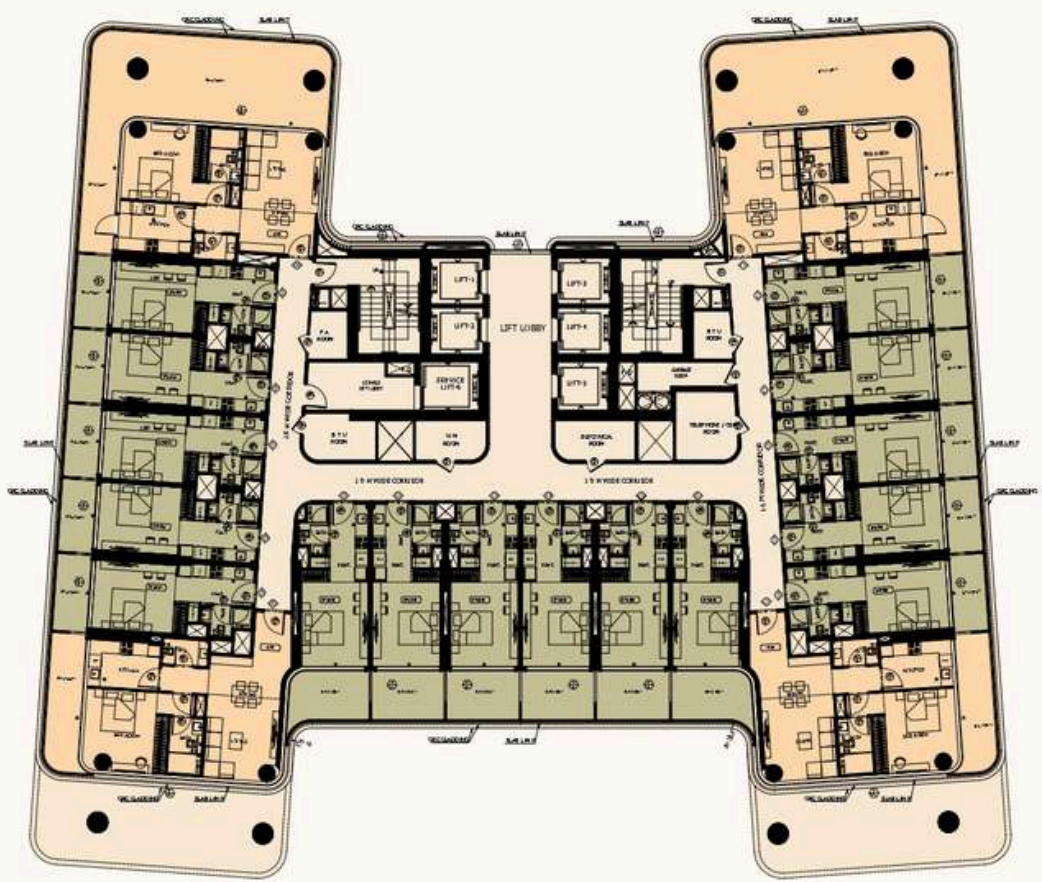
18<sup>th</sup> Floor Plan



STUDIO  
1 BEDROOM

# Typical Floor Plan

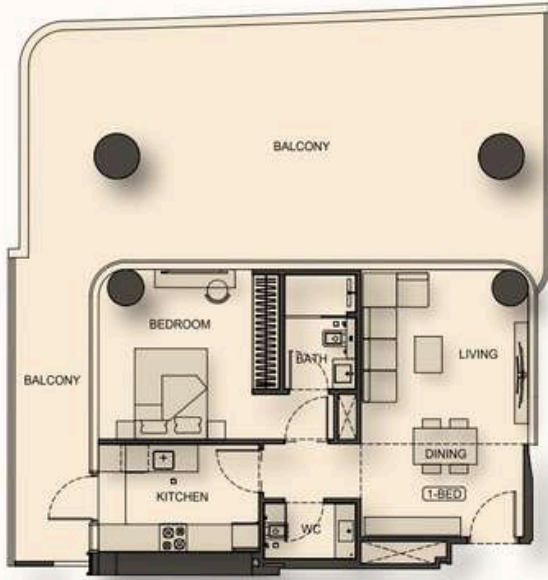
19<sup>th</sup>, 20<sup>th</sup> & 21<sup>st</sup> Floor Plan



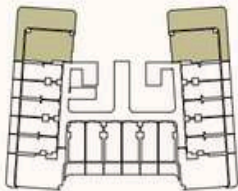
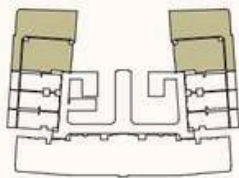
STUDIO  
1 BEDROOM



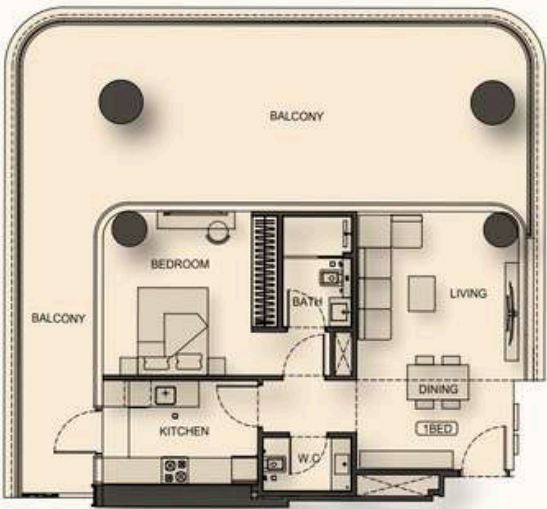
1 Bedroom  
Type 01



AREA	SQ.M	SQ.FT
SUITE AREA	61.79 m²	665.00 ft²
BALCONY AREA	74.18 m²	799.00 ft²
TOTAL UNIT AREA	135.97 m²	1464.00 ft²
FLAT DESIGN COMPONENTS		
M. BATH	4 m²	
M. BEDROOM	16 m²	
LIVING & DINING	22 m²	
KITCHEN	9 m²	
W.C	3 m²	
CORRIDOR	3 m²	

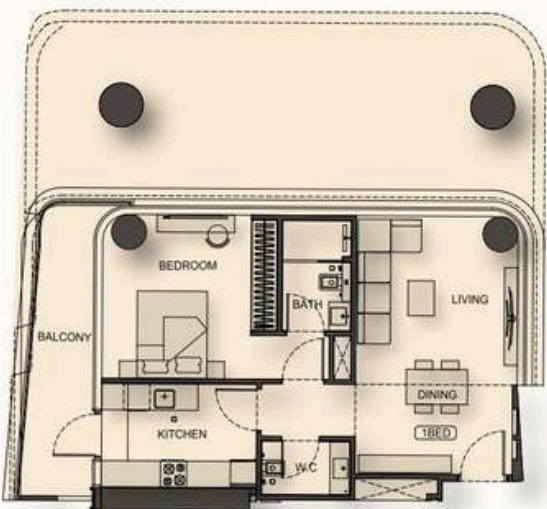


1 Bedroom  
Type 02

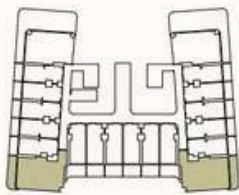
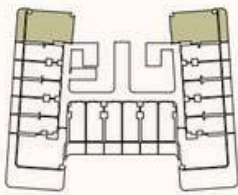


AREA	SQ.M	SQ.FT
SUITE AREA	61.79 m²	665.00 ft²
BALCONY AREA	62.76 m²	674.00 ft²
TOTAL UNIT AREA	122.55 m²	1339.00 ft²
FLAT DESIGN COMPONENTS		
M. BATH	4 m²	
M. BEDROOM	16 m²	
LIVING & DINING	22 m²	
KITCHEN	9 m²	
W.C	3 m²	
CORRIDOR	3 m²	

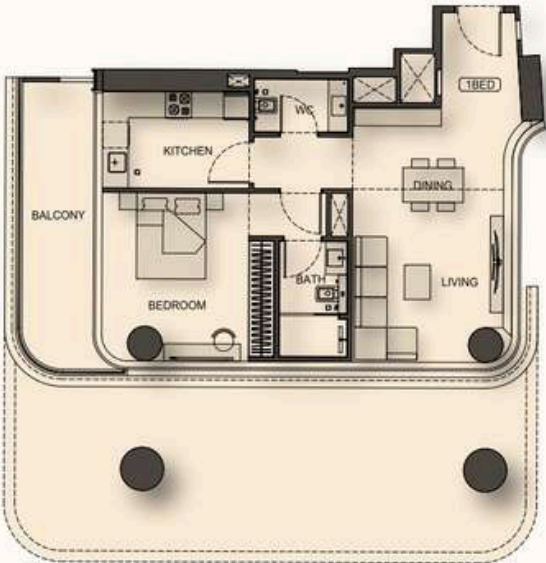
1 Bedroom  
Type 02



AREA	SQ.M	SQ.FT
SUITE AREA	61.79 m²	665.00 ft²
BALCONY AREA	11.85 m²	128.00 ft²
TOTAL UNIT AREA	73.73 m²	794.00 ft²
FLAT DESIGN COMPONENTS		
M. BATH	4 m²	
M. BEDROOM	16 m²	
LIVING & DINING	22 m²	
KITCHEN	9 m²	
W.C	3 m²	
CORRIDOR	3 m²	



1 Bedroom  
Type 03



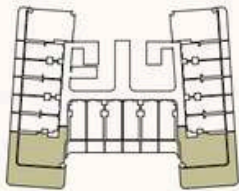
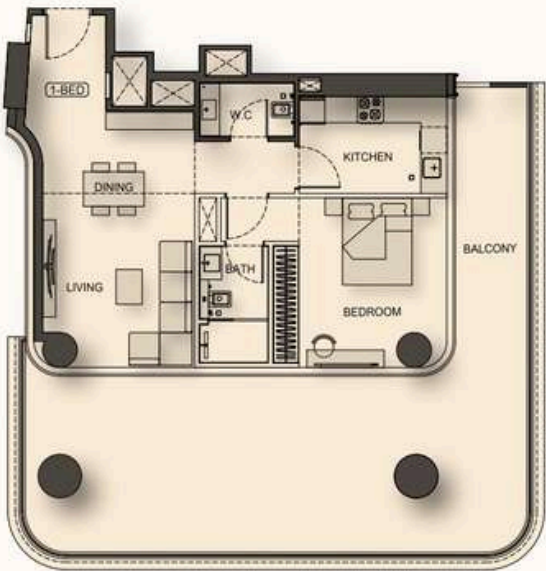
AREA	SQ.M	SQ.FT
SUITE AREA	67.58 m²	727.00 ft²
BALCONY AREA	11.65 m²	126.00 ft²
TOTAL UNIT AREA	79.24 m²	853.00 ft²
FLAT DESIGN COMPONENTS		
M. BATH	4 m²	
M. BEDROOM	17 m²	
LIVING & DINING	20 m²	
KITCHEN	8 m²	
W.C	3 m²	
CORRIDOR	6 m²	





# 1 Bedroom

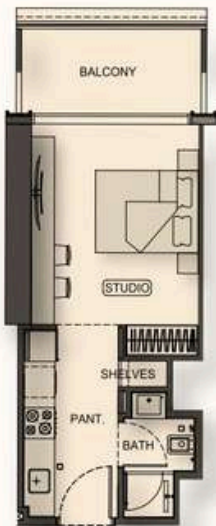
Type 05



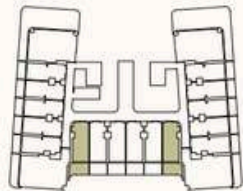
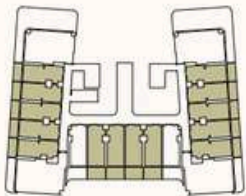
AREA	SQ. M	SQ. FT
SUITE AREA	65.84 m²	709.00 ft²
BALCONY AREA	60.68 m²	655.00 ft²
TOTAL UNIT AREA	126.52 m²	1364.00 ft²
FLAT DESIGN COMPONENTS		
M. BATH	4.00 m²	
M. BEDROOM	17.00 m²	
LIVING & DINING	20.00 m²	
KITCHEN	8.00 m²	
W.C.	3.00 m²	
CORRIDOR	8.00 m²	

# Studio

Type 01



AREA	SQ. M	SQ. FT
SUITE AREA	27.35 m²	294.00 ft²
BALCONY AREA	8.87 m²	95.00 ft²
TOTAL UNIT AREA	36.22 m²	389.00 ft²
FLAT DESIGN COMPONENTS		
STUDIO	13.00 m²	
PANT.	7.00 m²	
SHELVES	1.00 m²	
BATH	3.00 m²	



# Studio

Type 02



AREA	SQ. M	SQ. FT
SUITE AREA	27.23 m²	293.00 ft²
BALCONY AREA	10.56 m²	114.00 ft²
TOTAL UNIT AREA	37.79 m²	407.00 ft²
FLAT DESIGN COMPONENTS		
STUDIO	14.00 m²	
PANT.	7.00 m²	
SHELVES	1.00 m²	
BATH	3.00 m²	





# Binghatti Style Living Bespoke

EXPERT PROPERTY SERVICES ALL UNDER ONE ROOF



Property Management



Unit Resale



Parking Sale



Holiday Homes



Annual Maintenance



Furniture Packages

-  Binghatti
-  Binghattiofficial
-  Binghatti
-  Binghatti



One Scan  
All Solution





**Where Prestige Meets Property**



At Majara Luxury Real Estate L.L.C., we redefine the art of luxury living. Based in the heart of the UAE, we specialize in curating exceptional real estate experiences tailored to the needs of discerning investors, end-users, and global clientele.



With a refined portfolio of premium properties across all seven Emirates, our expertise lies in both off-plan and ready-to-move assets, offering opportunities that blend architectural excellence with investment potential.



We are more than just property consultants & we are partners in your journey to finding the perfect home, investment, or lifestyle. Driven by integrity, market insight, and personalized service, Majara stands as a trusted name in an ever-evolving market.

## **Contact Us :**

**Phone: +971564452803**

**Email: [info@majararealestate.com](mailto:info@majararealestate.com)**

**<https://majararealestate.com/>**