



GRAND AZIZI



GET MOVING THE GRAND WAY

Strategically located, Azizi Grand stands tall in the very heart of Dubai Sports City, a multi-venue sports complex. The DSC is a dynamic community comprising everything from residential, retail, leisure and recreational facilities along with the 25,000 capacity Dubai International Cricket Stadium, the flagship Els Golf Club and many global schools.

IN THE HEART OF THE ACTION



Dubai Sports City was set forth to fuel the passion for sports and gear up its spirit with state-of-the-art retail, residential and recreation facilities. Here, success is considered a journey to excellence as life's smallest achievements are celebrated both on and off the field.

GRAND LIVING FOR A GREAT NEIGHBOURHOOD



FLAUNT AN UPSCALE ADDRESS

Spread around the grandiose Azizi Grand are schools, sports academies, stadia and recreational facilities, opening doors to an unbeatable upscale living experience. Embrace the city to the fullest as it brims with new surprises everyday, all from the comfort of the place you will want to call home.



A woman with brown hair, wearing a white blazer over a light-colored top and sunglasses on her head, is looking at a piece of clothing hanging on a rack in a store. She is holding a small white object, possibly a tag or a piece of fabric, in her right hand. The background shows other clothing racks and a store interior.

A NEW REASON TO
GO SHOPPING

INDULGE IN
AUTHENTIC DELICACIES



A GRANDIOSITY ENCOMPASSING
THE BEST OF SUSTAINABILITY & SPORTS



Azizi Grand is determined to transform this prestigious neighbourhood by entwining the best of architecture and sustainable living to unveil a new paradigm for lifestyle that is quintessential of Sports City and Dubai.





ENJOY YOUR GAME
LIKE NEVER BEFORE

A man and a woman are running on a paved path in a park. The woman is on the left, wearing a light blue t-shirt and black leggings, with orange sneakers. The man is on the right, wearing a dark blue t-shirt and black shorts, with dark sneakers. They are both smiling and looking forward. The background features lush green trees and a clear blue sky. The sun is low in the sky, casting long shadows on the path.

RUN YOUR WAY
TO A HEALTHIER YOU

SMASH DOWN
THE UNBEATABLE



Azizi Grand boasts two swimming pools for your comfort and convenience. Facing the gymnasium is the adult pool where you can enjoy lounging in the summer months or end your long day with a brisk lap. The children's pool is conveniently placed next to the kids' play area. The pools also offer a glimpse of the Dubai skyline as you keep up with your fitness routine every day of the week.

BEACH IS NOT THE ONLY OPTION





TAKE A REFRESHING SPLASH



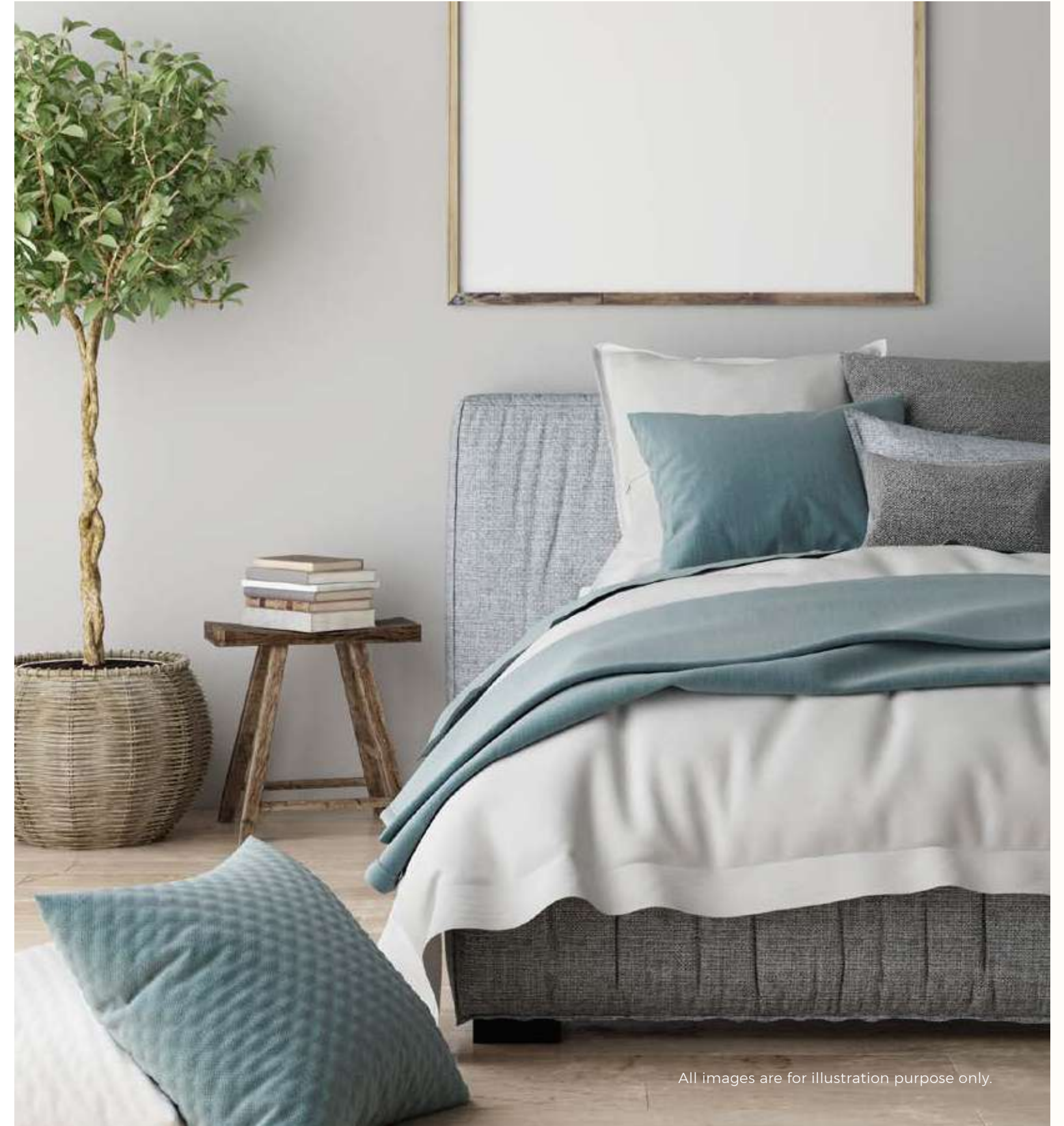
Azizi Grand offers an assortment of 431 spacious apartments, including studios, one and two bedrooms. All apartments have space-enhancing end-to-end balconies. The open layout allows you to personalize your space according to your needs and taste, making each apartment truly unique.

THE FUTURE OF MODERN LIVING



Every detail is carefully thought out, from the colors to the furniture layout, to make sure nothing gets overlooked.

BEAUTY LIES IN DETAILS



All images are for illustration purpose only.



Azizi Grand goes the extra mile to ensure that the interiors are just as glamorous and inviting as the lush outdoors. Spacious living areas with double-glazed windows and sweeping balconies ensure that you always look forward to coming home. Coupled with beautiful balconies offering stunning views, these dream homes are truly a little slice of heaven.

EXPERIENCE THE JOY OF LIVING

All images are for illustration purpose only.

Our open plan kitchen areas are ready for customisation. There is plenty of room for a dining area where you can host family and friends with ease. Our kitchens are functional and uncluttered, giving you the space to plan meals efficiently. All kitchens are fitted with sturdy countertops, premium appliances and plenty of elegant cabinets for storage.

FINE DINING EXPERIENCE



Soft lighting and exquisite furnishings run through the entire apartment, but the bedrooms are where things get innovative. We have designed this space to offer all the modern necessities, including built-in wardrobes, vanity units, and mirrors to help you look your best every day. Exquisite tiling and framed floor-to-ceiling double-glazed windows offer breath-taking views and also protect you from the harsh sunlight.

YOUR PERSONAL COCOON OF COMFORT



Each bathroom is a clean and artful space that is minimalistic in design with built-in shelving and cabinetry that tastefully stores all your personal items. Guest bathrooms complement the en suite bathrooms, lending privacy and convenience.

ARTFULLY CRAFTED BATHROOMS



Spacious balconies that wrap around the entire length of the apartment and overlook the sprawling greens below add to the allure of the destination, making it the perfect venue to unwind after a long day at work or to socialize with friends and family.

BREATHE IN THE GOOD LIFE



ALWAYS SOMETHING
HAPPENING





YOUR FITNESS CENTER

Being in Sports City, Azizi Grand boasts a perfectly kitted gymnasium that is ideal to keep healthy and in shape. World-class fitness facilities fulfil your every need, so you do not even have to step outside, but can workout in the comfort of your new abode.

KEY LANDMARKS

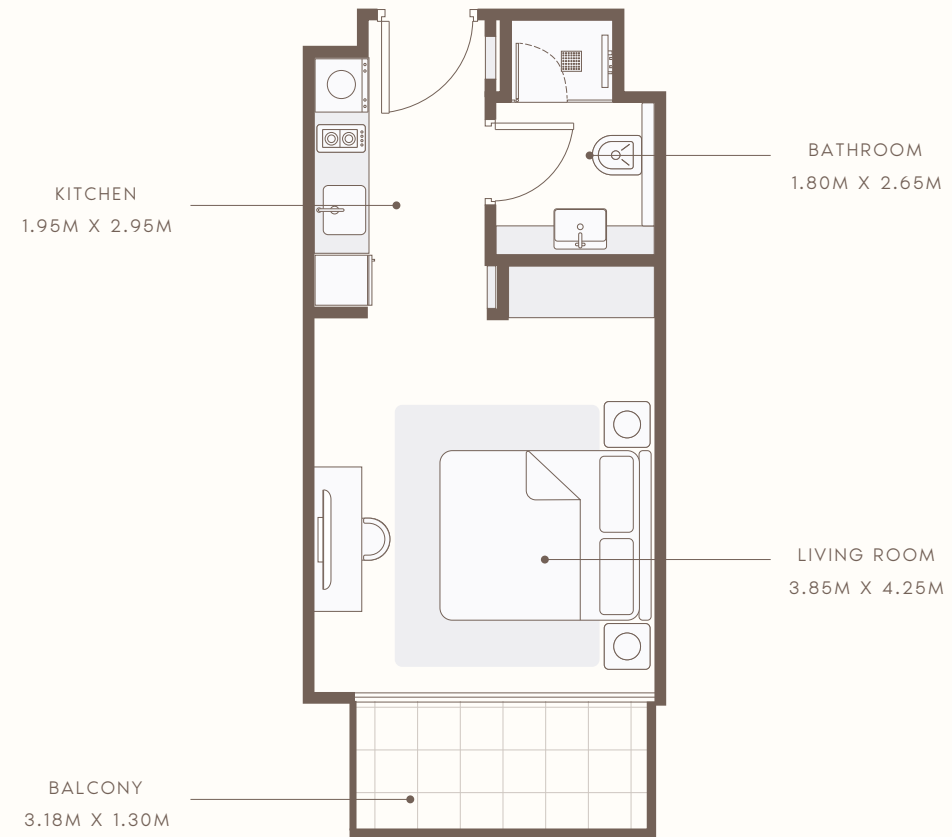
- | | | |
|---|--|---|
| <p>1 EQUESTRIAN CLUB
2 minutes
نادي الفروسية
2 دقائق</p> <p>2 MOHAMMED BIN ZAYED ROAD
3 minutes
طريق محمد بن زايد
3 دقائق</p> <p>3 MOTOR CITY & DUBAI AUTODROME
3 minutes
موتور سيتي و الاوتودروم
3 دقائق</p> <p>4 DUBAI SPORTS CITY
5 minutes
مدينة دبي الرياضية
5 دقيقة</p> | <p>5 AL KHAIL ROAD
8 minutes
طريق الخيل
8 دقيقة</p> <p>6 EXPO CITY DUBAI
18 minutes
مدينة إكسبو دبي
18 دقيقة</p> <p>7 DUBAI MARINA & BLUEWATERS ISLAND
18 minutes
مارينا دبي و جزيرة بلوواترز
18 دقيقة</p> <p>8 AL MAKTOUM INTERNATIONAL AIRPORT
25 minutes
مطار المکتوم الدولي
25 دقيقة</p> | <p>9 CITY CENTRE ME'AISEM
10 minutes
المعيصم سيتي سنتر
10 دقائق</p> <p>10 JUMEIRAH BEACH
20 minutes
شاطئ جميرا
20 دقيقة</p> |
|---|--|---|



FLOOR PLAN

STUDIO TYPE 1

1st to 14th Floor



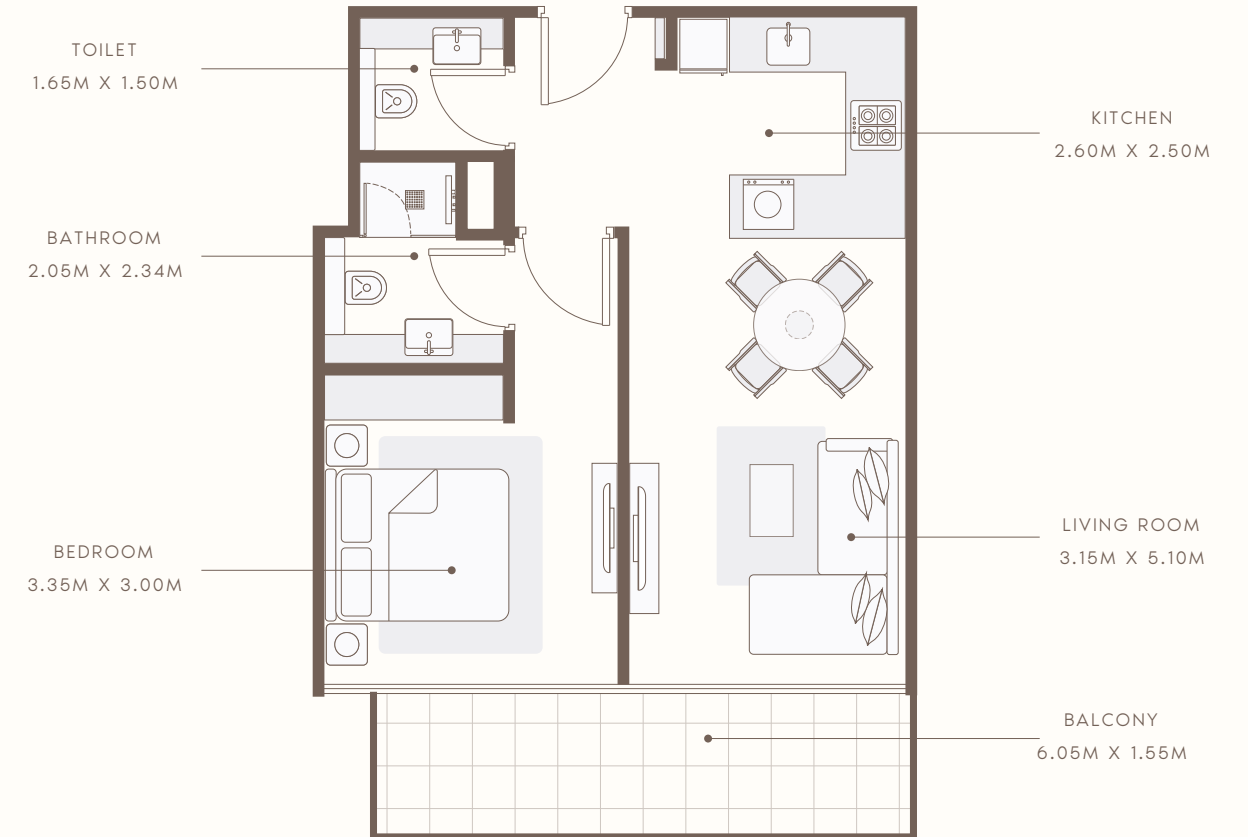
SUITE AREA : 339.81 SQ.FT
TOTAL AREA : 397.41 SQ.FT

TYPICAL UNITS

FLOOR PLAN

1 BEDROOM TYPE 1

1st to 14th Floor



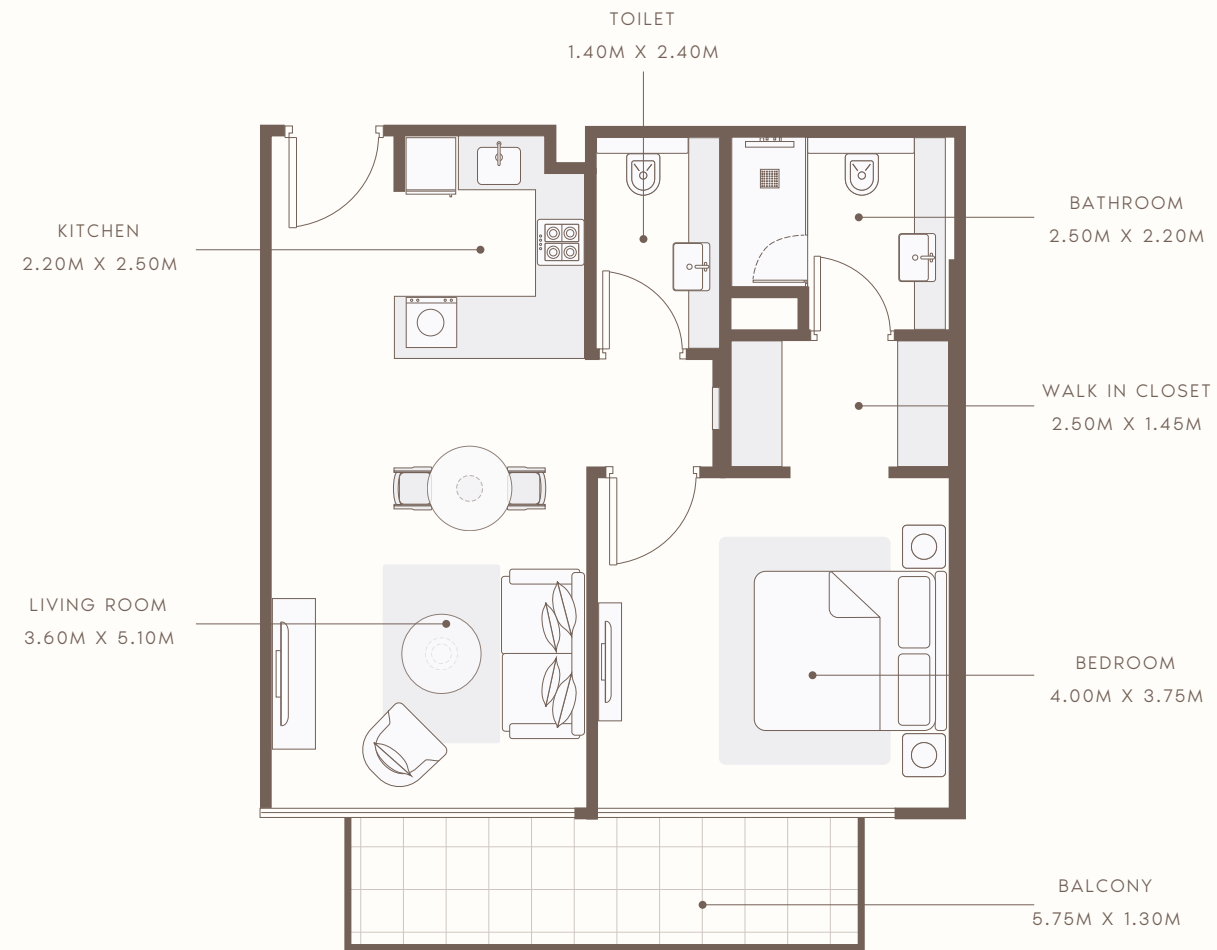
SUITE AREA : 565.54 SQ.FT
TOTAL AREA : 675.55 SQ.FT

TYPICAL UNITS

FLOOR PLAN

1 BEDROOM TYPE 2

1st to 14th Floor



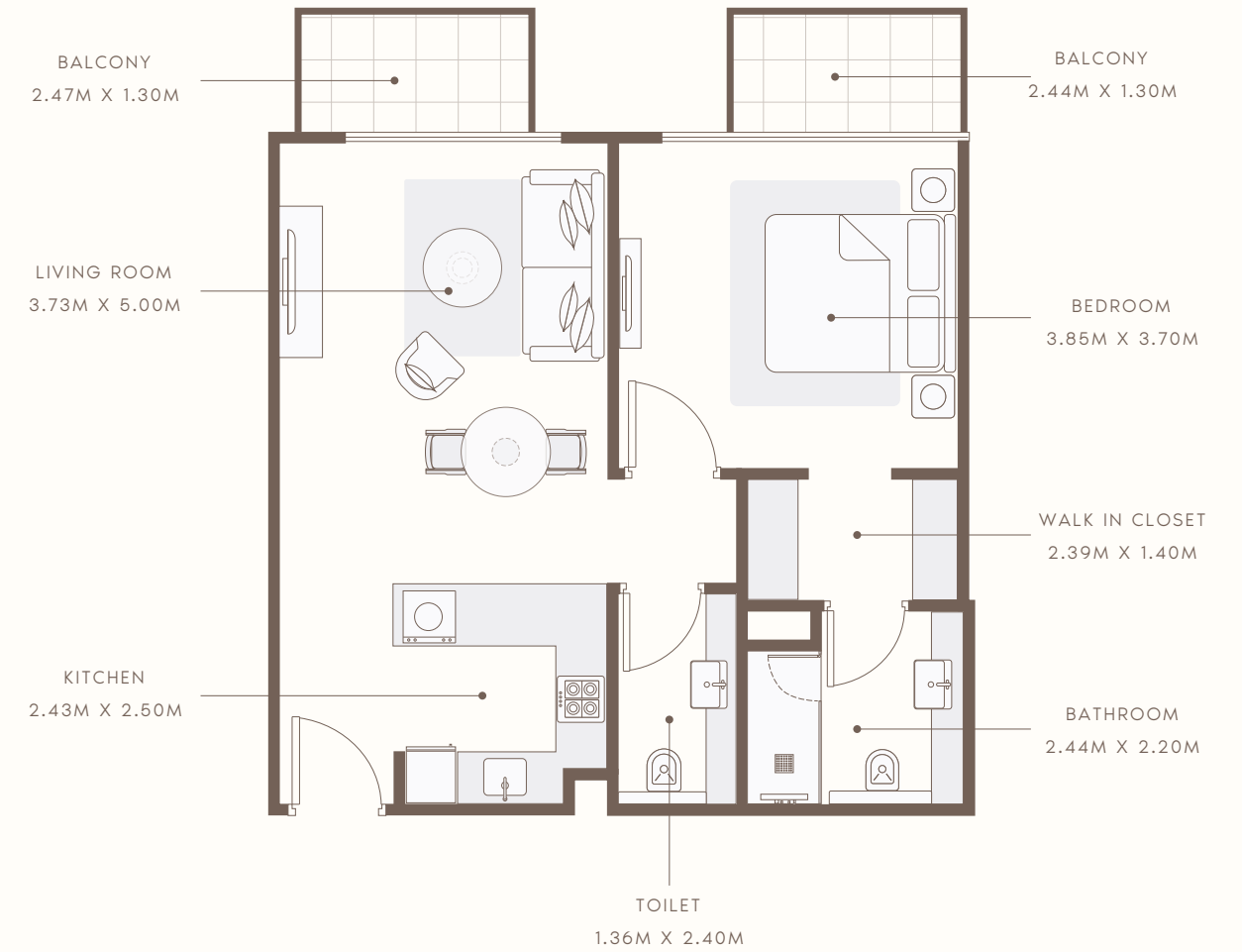
SUITE AREA : 671.45 SQ.FT
TOTAL AREA : 734.64 SQ.FT

TYPICAL UNITS

FLOOR PLAN

1 BEDROOM TYPE 3

1st to 14th Floor



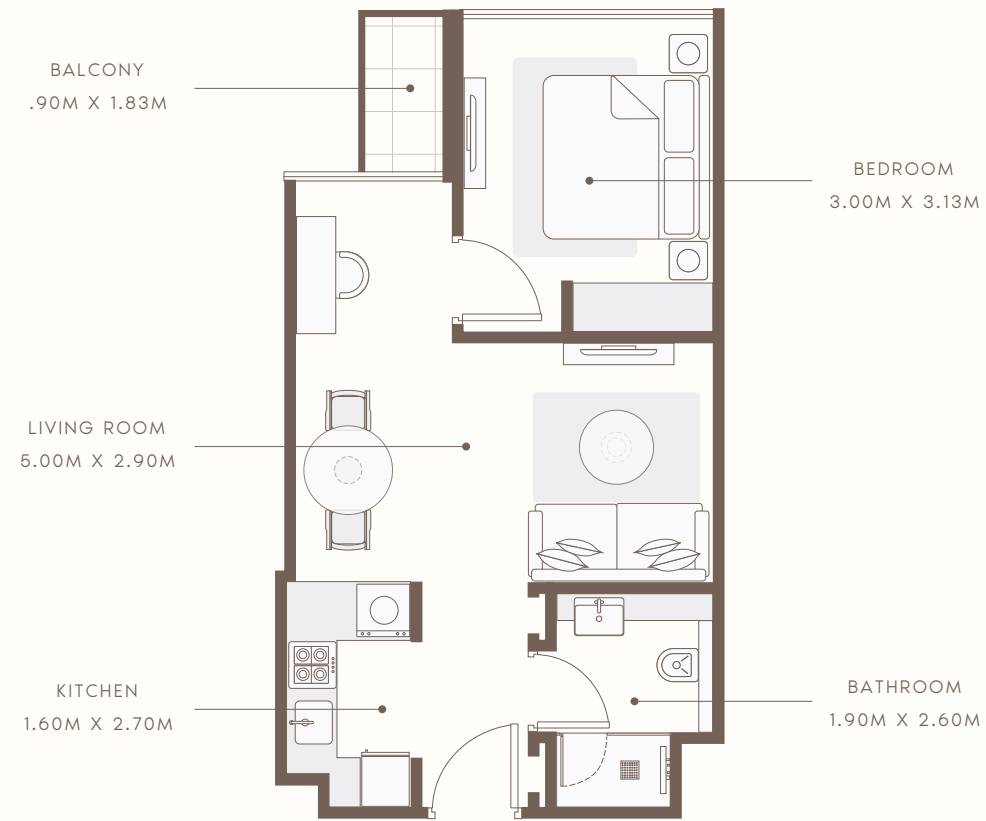
SUITE AREA : 661.66 SQ.FT
TOTAL AREA : 725.39 SQ.FT

TYPICAL UNITS

FLOOR PLAN

1 BEDROOM TYPE 4

1st to 14th Floor



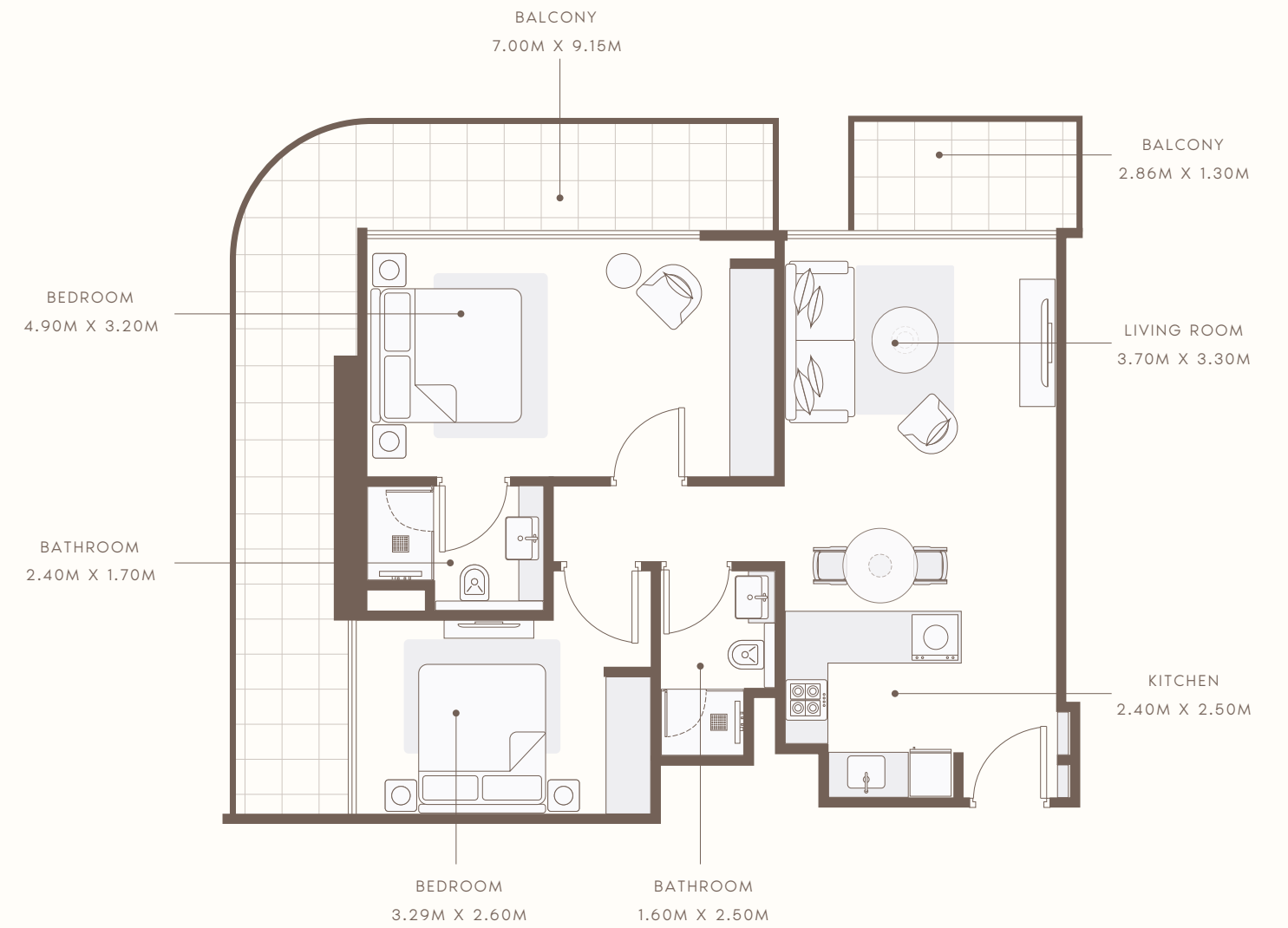
SUITE AREA : 505.80 SQ.FT
TOTAL AREA : 527.65 SQ.FT

TYPICAL UNITS

FLOOR PLAN

2 BEDROOM TYPE 1

1st to 14th Floor



SUITE AREA : 796.53 SQ.FT
TOTAL AREA : 1099.43 SQ.FT

TYPICAL UNITS

Azizi Developments is one of Dubai's leading, and most admired real estate and lifestyle development companies. Established in 2007, they have proven competencies in modern residential and mixed-use communities strategically located in some of Dubai's most sought-after neighbourhoods. They are committed to not just meeting, but exceeding the expectations of their clients and community and enriching lives through state-of-the-art projects and real estate developments.





UAE: +971 58 586 4405
CH: +41 79 777 3773
info@majara-realestate.com
www.majara-realestate.com

MAJARA REAL ESTATE L.L.C
Burj Al Salam Tower, 36th floor
Sheikh Zayed Road
Dubai, U.A.E.

 **AZIZI**

800-29494
AZIZIDEVELOPMENTS.COM