



# SKY GARDENS

## TOWER

By GJ Properties | [www.skygardenstower.ae](http://www.skygardenstower.ae)



# Elevating Urban Living in Ajman

Ajman, a rising UAE destination, balances urban growth with serene living. In its dynamic Emirates City, Sky Gardens Tower emerges as a residential landmark, redefining urban living.

Developed by GJ Properties, it blends modern elegance, convenience, and sustainable design for discerning individuals and families.



# Why Invest in Ajman

Ajman's appeal stems from its status as a Top 5 Safest City, strategic connectivity to all 7 Emirates, investor-friendly policies with Golden Visa eligibility, and diverse, affordable property options. Ongoing infrastructure development enhances its investment potential.

- Prime Location
- Future Rail Access
- Affordable Entry
- Strong ROI
- Low Utility Costs
- Residency Benefits
- Ajman Free Zone
- Proximity to Education
- Access to Key Attractions





# Al Amerah. Your Day-to-Day, Covered

Located in Al Amerah, Sky Gardens Tower benefits from a setting that strikes a balance between calm residential living and practical connectivity. Set on the eastern edge of Ajman, the community offers smooth access to major highways and neighboring emirates.

With Sheikh Mohammed Bin Zayed Road right next door, getting to Dubai, Sharjah, Ras Al Khaimah or Umm Al Quwain is fast, simple, and stress-free—whether it's for work or a weekend break.





# A Tower That Redefines

Sky Gardens Tower, developed by GJ Properties, offers modern elegance and convenience in Emirates City.

Designed for discerning investors and families, it features a strategic location, world-class amenities, and thoughtfully crafted 2-bedroom layouts with freehold ownership.



1. Hamidiya Park - 11 mins
2. Ajman City Centre - 18 mins
3. Ajman University - 18 mins
4. Sheikh Zayed Mosque, Ajman - 20 mins
5. Al Zorah Natural Reserve - 22 mins
6. Amina Hospital - 24 mins
7. Ajman beach - 26 mins
8. Ajman Heritage District - 26 mins
9. Ajman Marina - 26 mins
10. Sharjah International Airport - 27 mins
11. Dubai International Airport - 27 mins
12. Dubai Festival City Mall & Imagine Show - 30 mins
13. Ras Al Khor Dubai - 30 mins



# Conveniently Connected

Sky Gardens Tower's prime location on Sheikh Mohammad Bin Zayed Road ensures seamless connectivity:

- Sharjah: 15 Min.
- Dubai: 30 Min.
- Easy access to Sheikh Mohammed Bin Zayed Road and Ajman Corniche
- Steps away from shopping centers, international schools, and healthcare facilities
- Close to leisure destinations like Ajman Marina and Al Zorah Nature Reserve

Live where convenience meets opportunity.

# Sophisticated Comfort & Sustainable Luxury

Sky Gardens Tower features 741 residences with open-plan living, premium finishes, and abundant natural light.

The tower integrates sustainable features, including hanging gardens and a green facade, inspired by the Hanging Gardens of Babylon.



# SKY GARDENS

TOWER



# Amenities Above

Residents of Sky Gardens Tower indulge in a lifestyle of comfort and wellness with premium facilities designed to enhance everyday living.

## On-Site

- State-of-the-art health club
- Resort-style swimming pool
- Landscaped gardens
- Children's play area
- 24/7 security
- Covered parking
- High-speed elevators
- Retail spaces

## Nearby

- Markets and Shopping Centers
- Schools and Universities
- Parks
- Recreation Centers
- Restaurants
- Walking Areas
- Sitting Areas



# Sky Gardens Tower: Facts & Features



**Property Type:** Residential Apartments



**Total Number of Units:** 741



**Unit Mix:** STUDIO, 1BHK AND 2BHK



**Unit Sizes Starting From:** 605.22 SQFT to 2975.25 SQFT



**Completion Date:** Q1 2028



**Handover Date:** Q1 2028



**Payment Plan:** 40/60 (2 years/4 years. Total 6 years)



**Location:** Sheikh Mohammad Bin Zayed Road



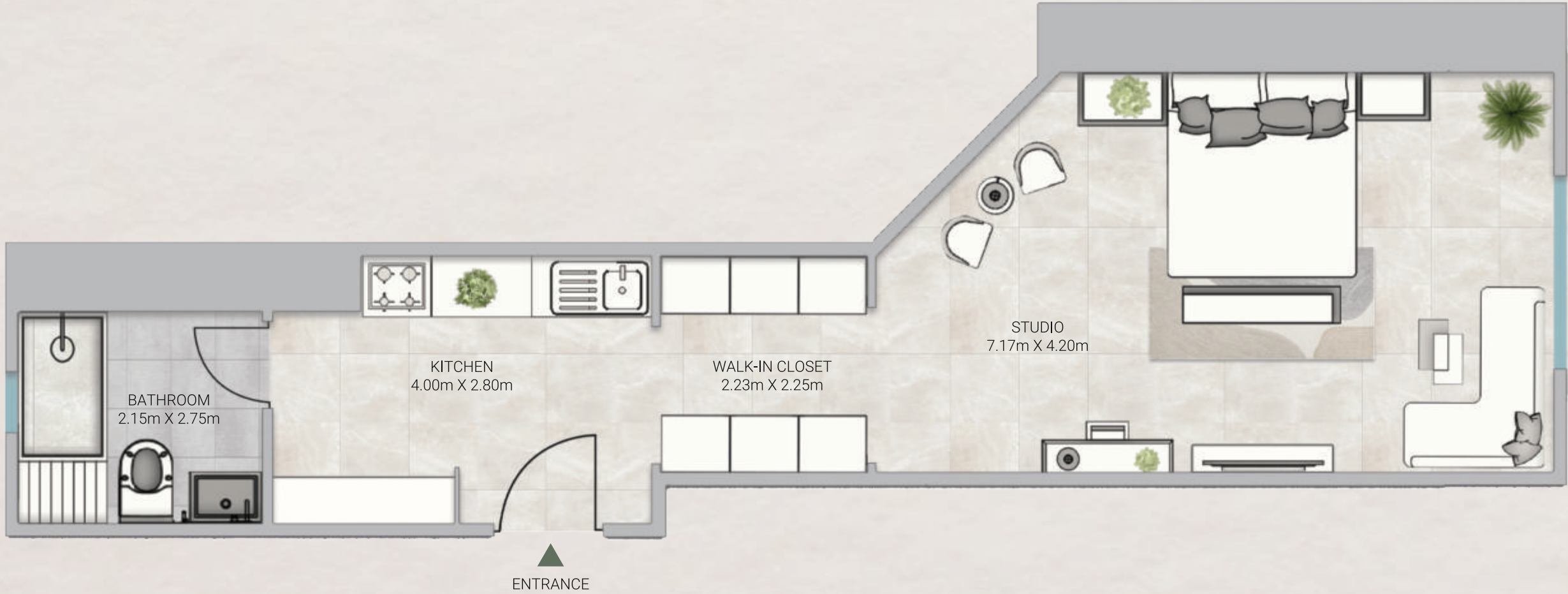
# FLOOR PLAN





# SKY GARDENS

TOWER



## UNIT G01

Studio - Level Ground

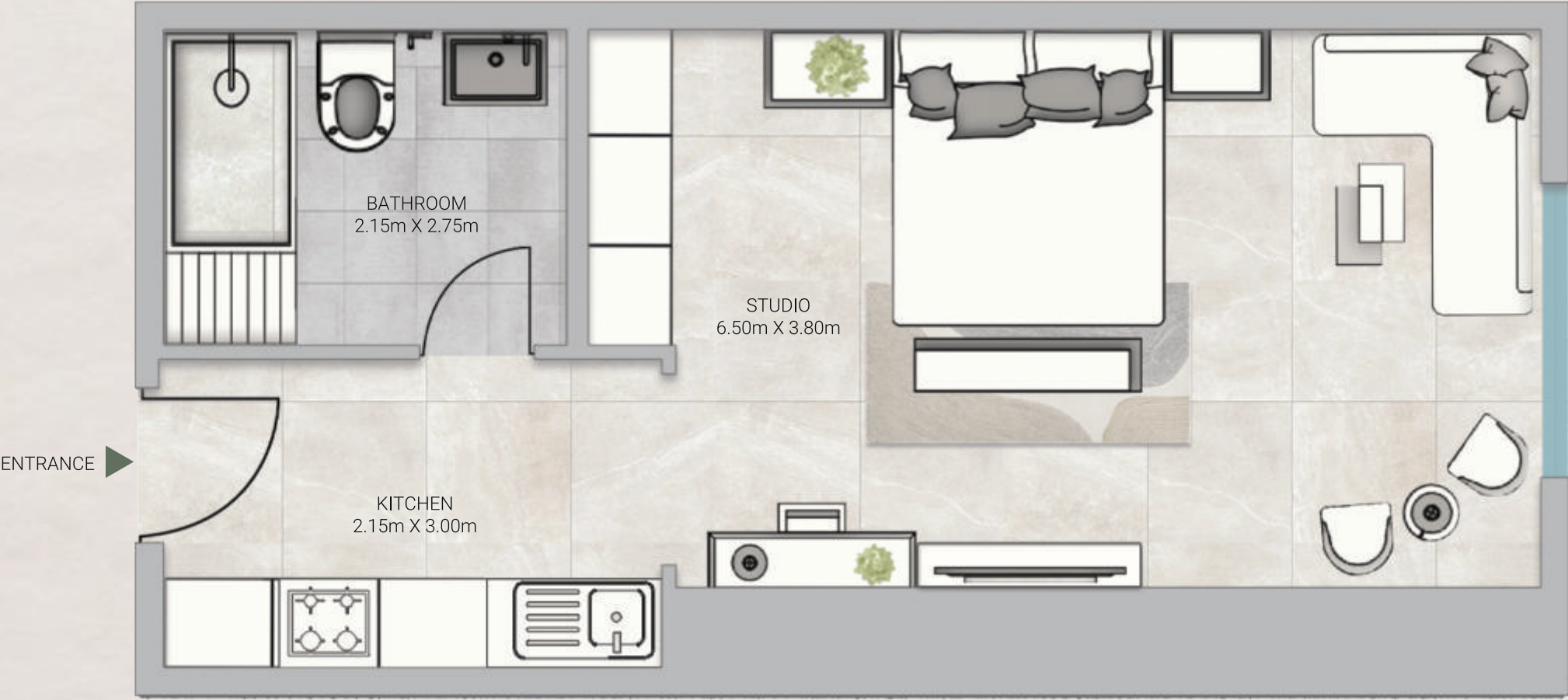
Gross Area: 773.03 SQ.FT  
71.82 SQM.

Disclaimer:

- 1. All materials, finishes, dimensions and drawings are approximate.
- 2. Actual suite area may vary from the stated area.
- 3. Drawings are not to scale.
- 4. Information is subject to change without notice.
- 5. The Developer reserves the right to make revisions/alterations without any liability whatsoever.

# SKY GARDENS

TOWER



## UNIT G02

Studio - Level Ground

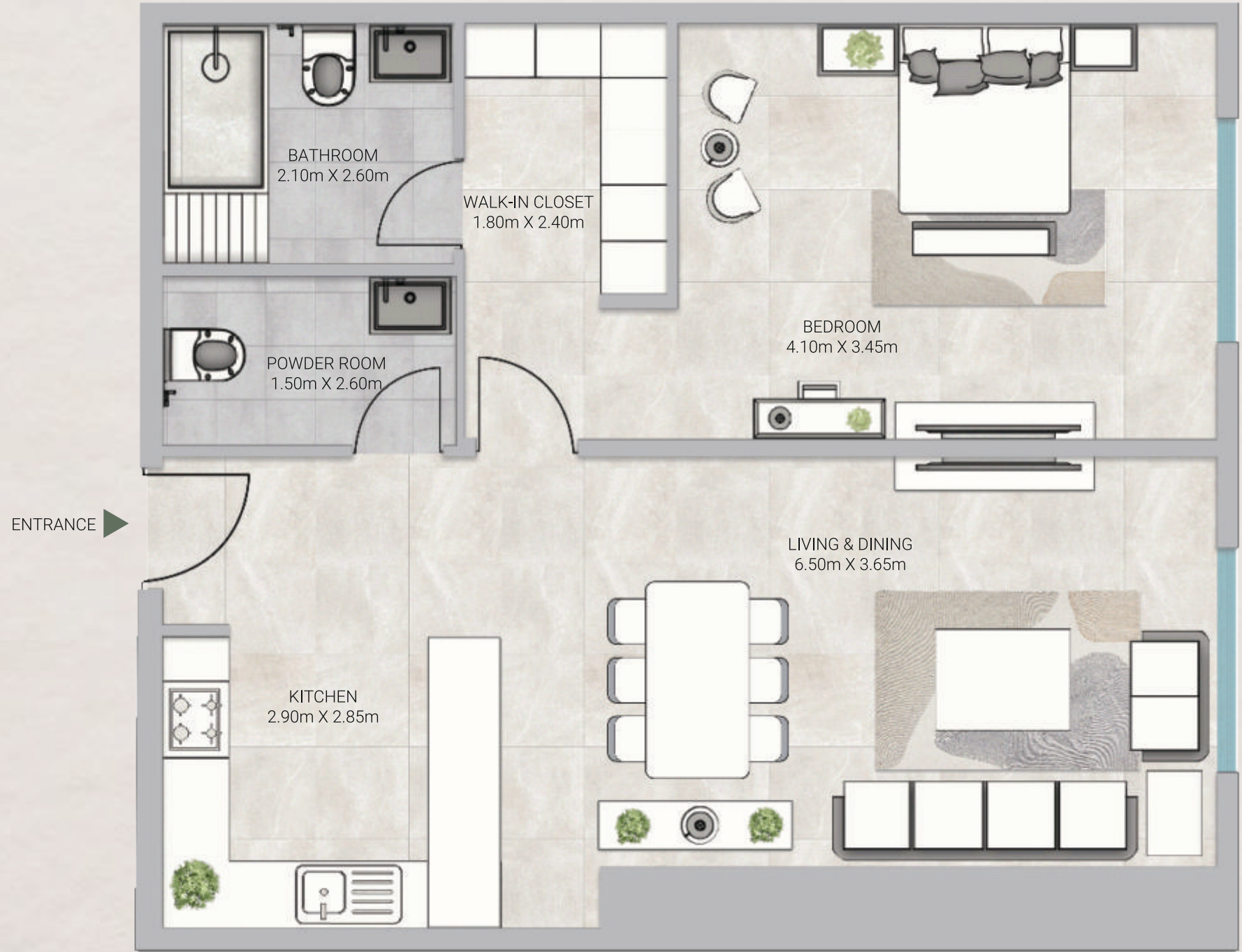
Gross Area: 623.61 SQ.FT  
57.94 SQM.

Disclaimer:

- 1. All materials, finishes, dimensions and drawings are approximate.
- 2. Actual suite area may vary from the stated area.
- 3. Drawings are not to scale.
- 4. Information is subject to change without notice.
- 5. The Developer reserves the right to make revisions/alterations without any liability whatsoever.

# SKY GARDENS

TOWER



## UNIT G03

1 Bedroom - Level Ground

Gross Area: 1139.51 SQ.FT  
105.86 SQM.

Disclaimer:  
1. All materials, finishes, dimensions and drawings are approximate. 2. Actual suite area may vary from the stated area. 3. Drawings are not to scale. 4. Information is subject to change without notice.  
5. The Developer reserves the right to make revisions/alterations without any liability whatsoever.

# SKY GARDENS

TOWER



## UNIT G04

Studio - Level Ground

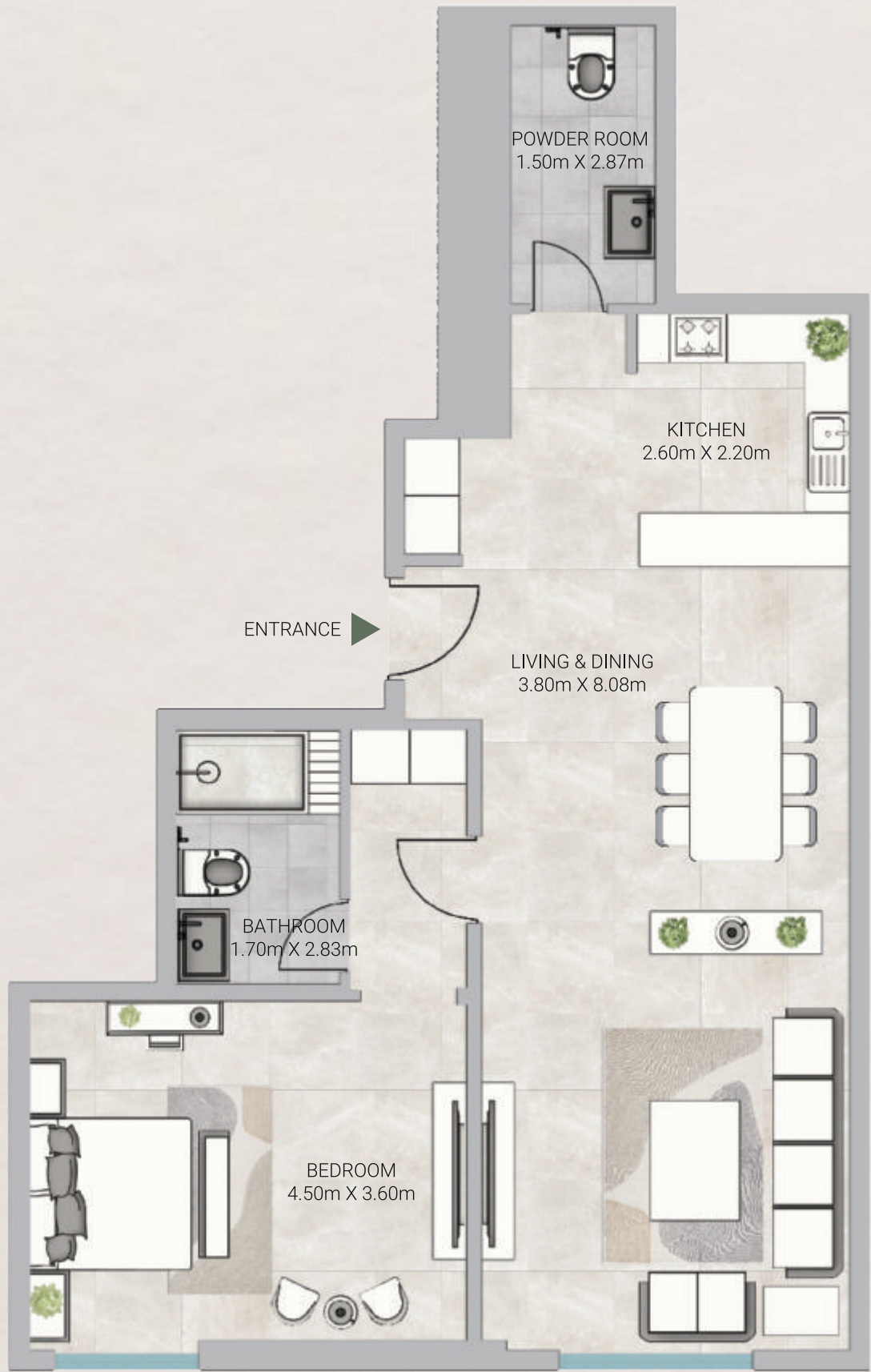
Gross Area: 707.59 SQ.FT  
65.74 SQM.

Disclaimer:

- 1. All materials, finishes, dimensions and drawings are approximate.
- 2. Actual suite area may vary from the stated area.
- 3. Drawings are not to scale.
- 4. Information is subject to change without notice.
- 5. The Developer reserves the right to make revisions/alterations without any liability whatsoever.

# SKY GARDENS

TOWER



## UNIT G05

1 Bedroom - Level Ground

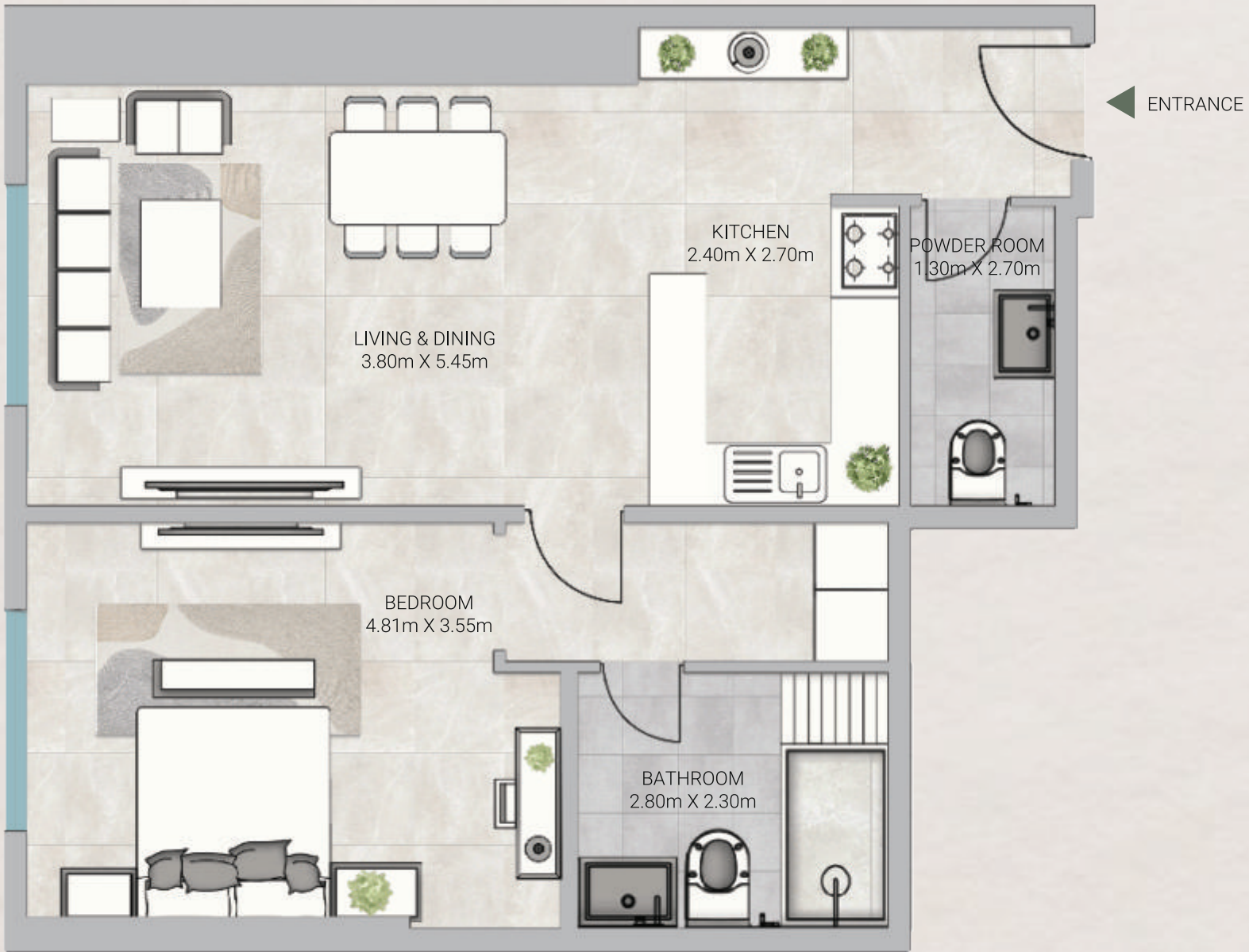
Gross Area: 1131.20 SQ.FT  
105.09 SQM.

Disclaimer:

- 1. All materials, finishes, dimensions and drawings are approximate.
- 2. Actual suite area may vary from the stated area.
- 3. Drawings are not to scale.
- 4. Information is subject to change without notice.
- 5. The Developer reserves the right to make revisions/alterations without any liability whatsoever.

# SKY GARDENS

TOWER



## UNIT G06

1 Bedroom - Level Ground

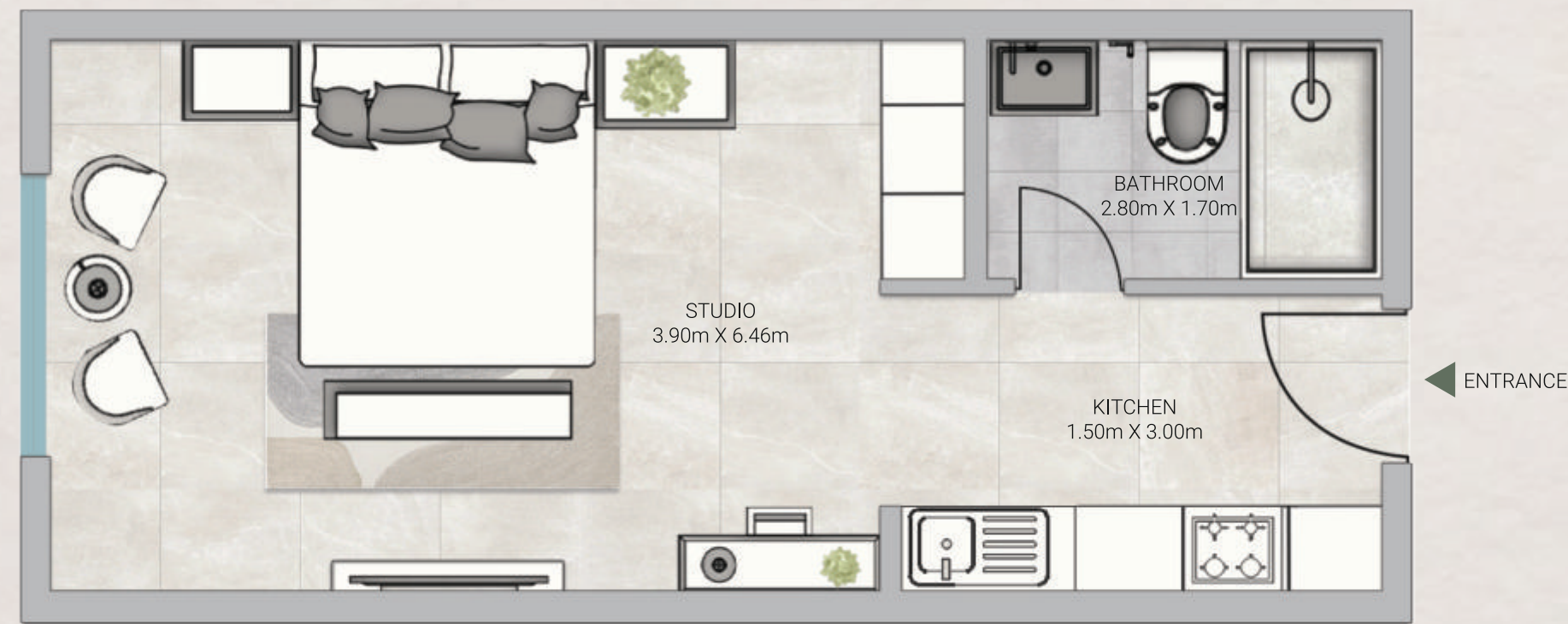
Gross Area: 1083.87 SQ.FT  
100.69 SQM.

Disclaimer:

- 1. All materials, finishes, dimensions and drawings are approximate.
- 2. Actual suite area may vary from the stated area.
- 3. Drawings are not to scale.
- 4. Information is subject to change without notice.
- 5. The Developer reserves the right to make revisions/alterations without any liability whatsoever.

# SKY GARDENS

TOWER



## UNIT G07

Studio - Level Ground

Gross Area:                   605.22 SQ.FT  
56.23 SQM.

Disclaimer:

1. All materials, finishes, dimensions and drawings are approximate.
2. Actual suite area may vary from the stated area.
3. Drawings are not to scale.
4. Information is subject to change without notice.
5. The Developer reserves the right to make revisions/alterations without any liability whatsoever.

# SKY GARDENS

TOWER



## UNIT G08

Studio - Level Ground

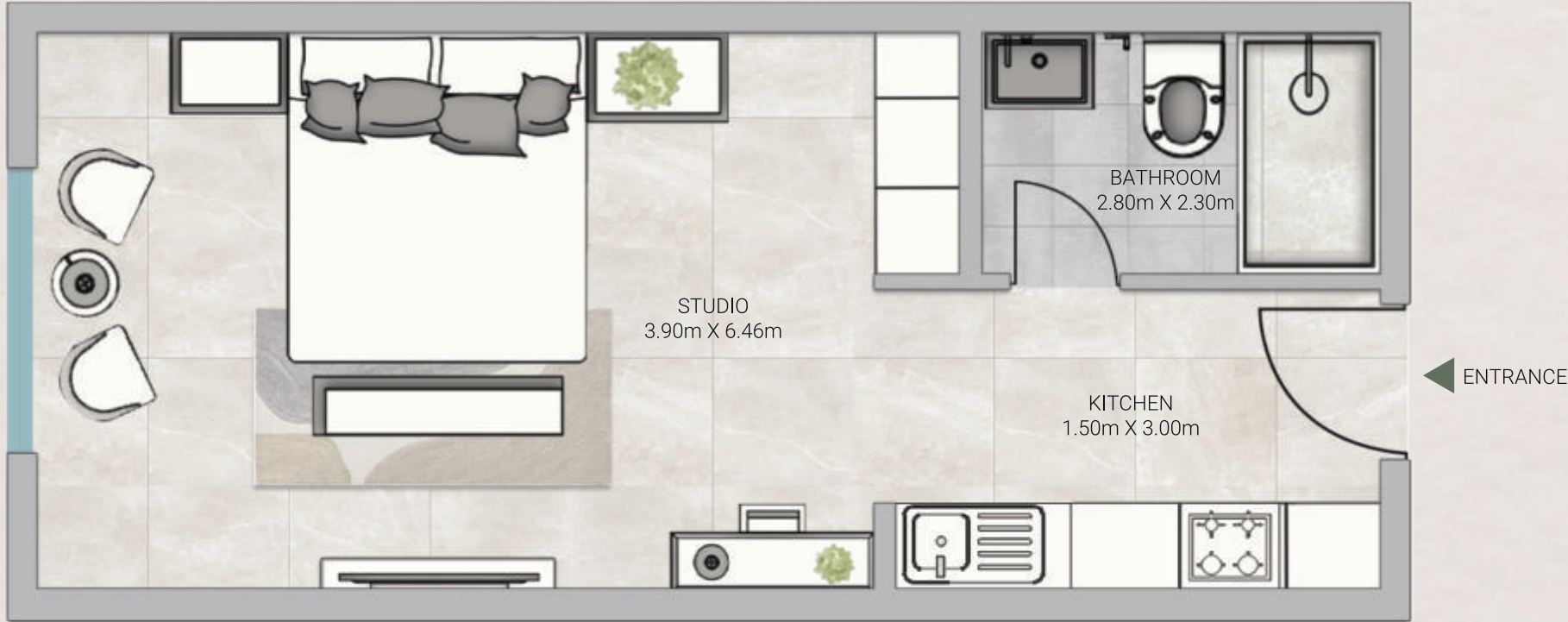
Gross Area: 611.45 SQ.FT  
56.81 SQM.

Disclaimer:

- 1. All materials, finishes, dimensions and drawings are approximate.
- 2. Actual suite area may vary from the stated area.
- 3. Drawings are not to scale.
- 4. Information is subject to change without notice.
- 5. The Developer reserves the right to make revisions/alterations without any liability whatsoever.

# SKY GARDENS

TOWER



## UNIT G09

Studio - Level Ground

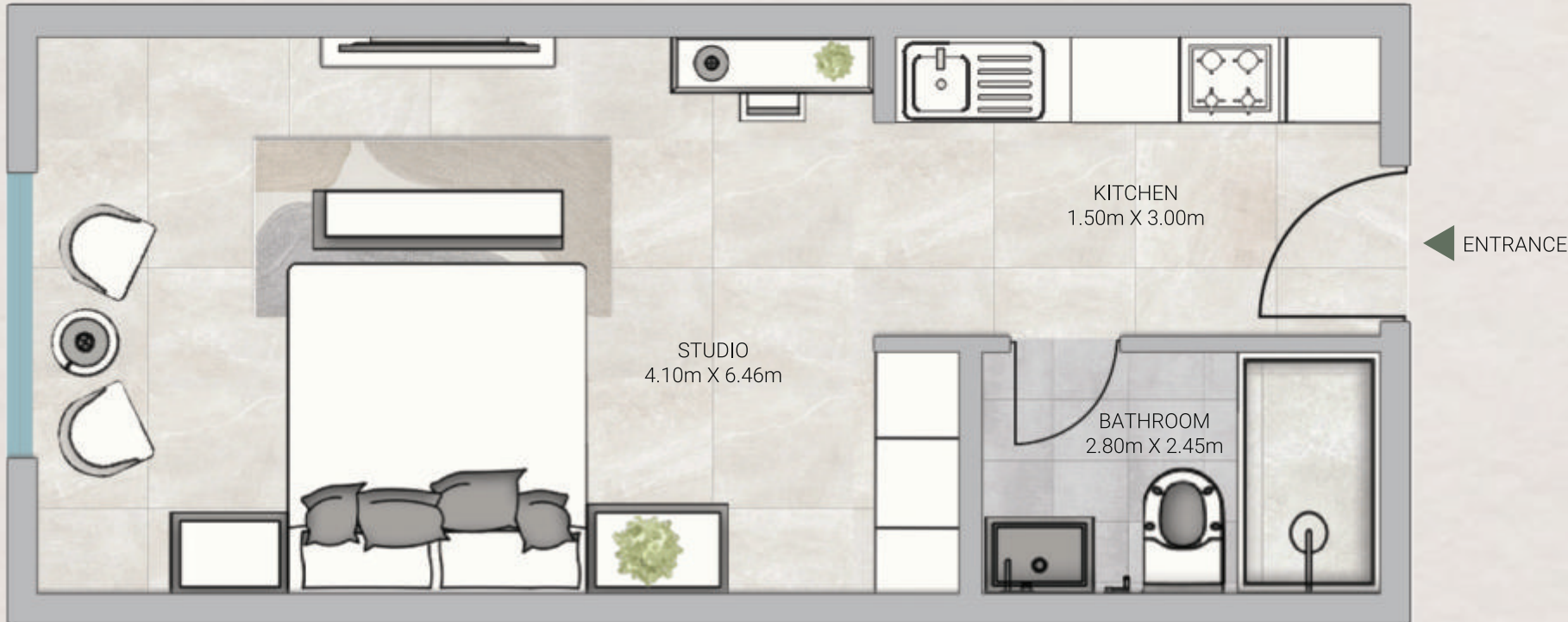
Gross Area:                   642.31 SQ.FT  
59.67 SQM.

Disclaimer:

- 1. All materials, finishes, dimensions and drawings are approximate.
- 2. Actual suite area may vary from the stated area.
- 3. Drawings are not to scale.
- 4. Information is subject to change without notice.
- 5. The Developer reserves the right to make revisions/alterations without any liability whatsoever.

# SKY GARDENS

TOWER



## UNIT G10

Studio - Level Ground

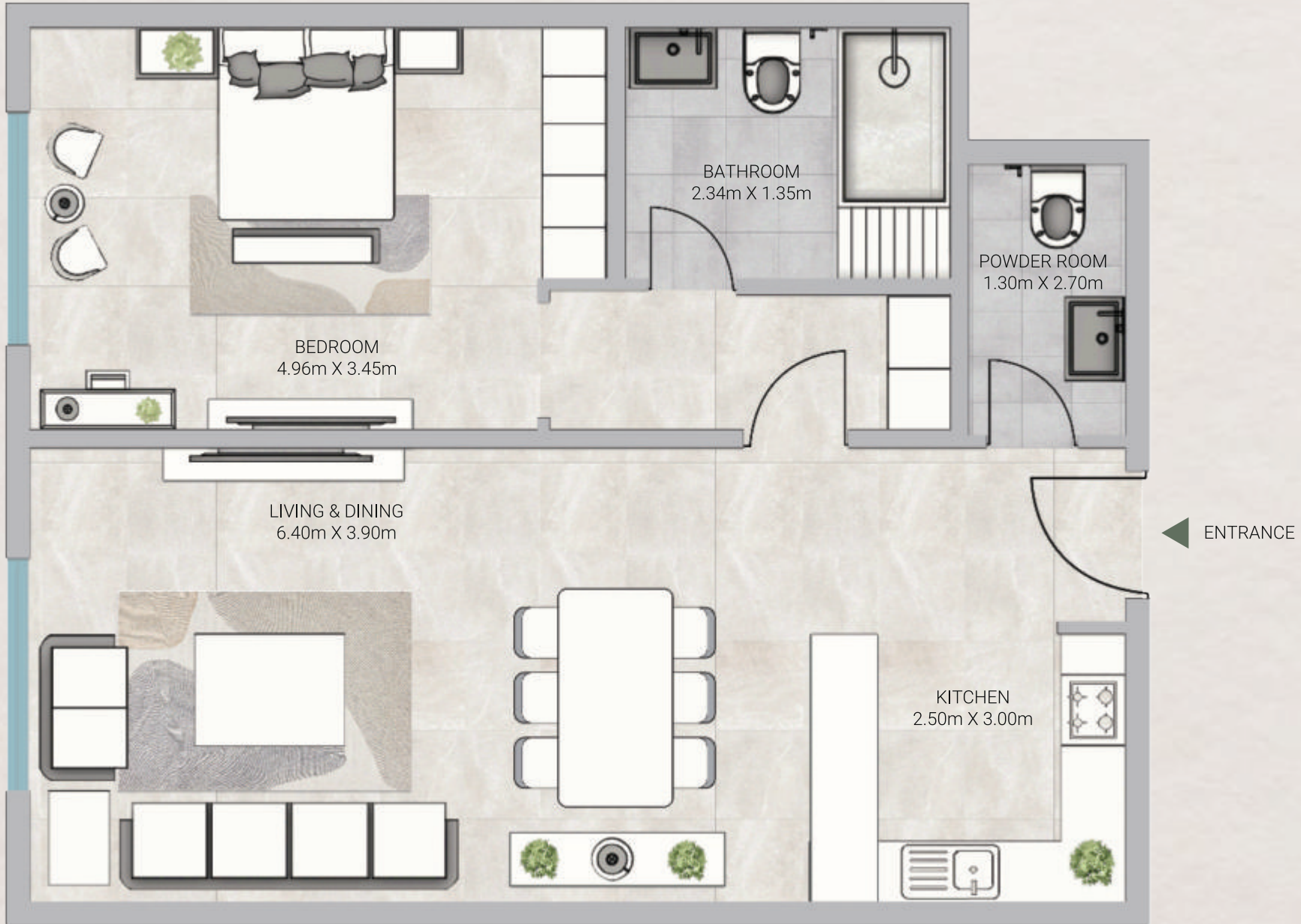
Gross Area: 665.90 SQ.FT  
61.86 SQM.

Disclaimer:

- 1. All materials, finishes, dimensions and drawings are approximate.
- 2. Actual suite area may vary from the stated area.
- 3. Drawings are not to scale.
- 4. Information is subject to change without notice.
- 5. The Developer reserves the right to make revisions/alterations without any liability whatsoever.

# SKY GARDENS

TOWER



## UNIT G11

1 Bedroom - Level Ground

Gross Area: 1081.79 SQ.FT  
100.50 SQM.

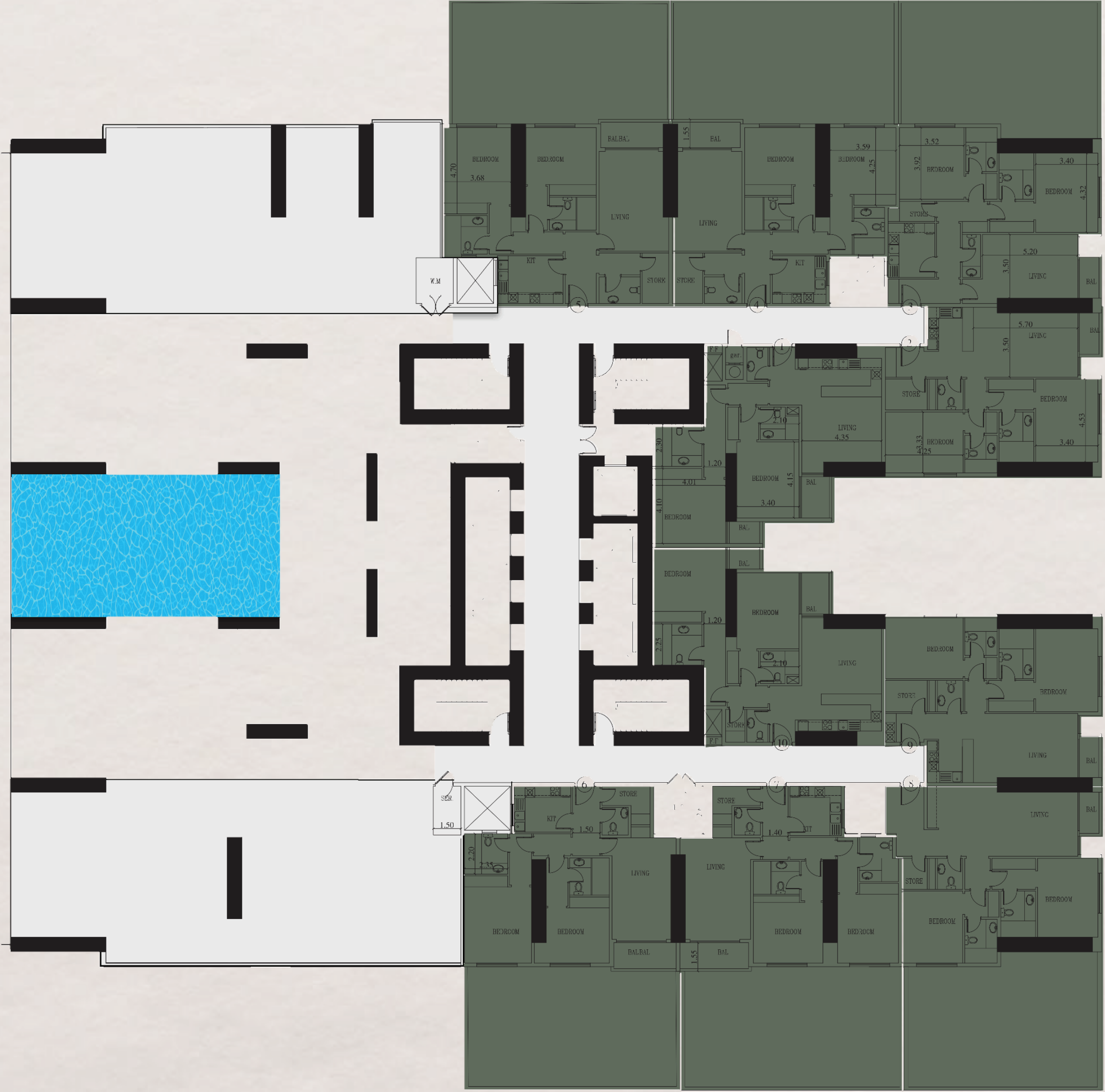
Disclaimer:

- 1. All materials, finishes, dimensions and drawings are approximate.
- 2. Actual suite area may vary from the stated area.
- 3. Drawings are not to scale.
- 4. Information is subject to change without notice.
- 5. The Developer reserves the right to make revisions/alterations without any liability whatsoever.




# First Floor Plan - Two Bedrooms

Mohd Bin Zayed Road

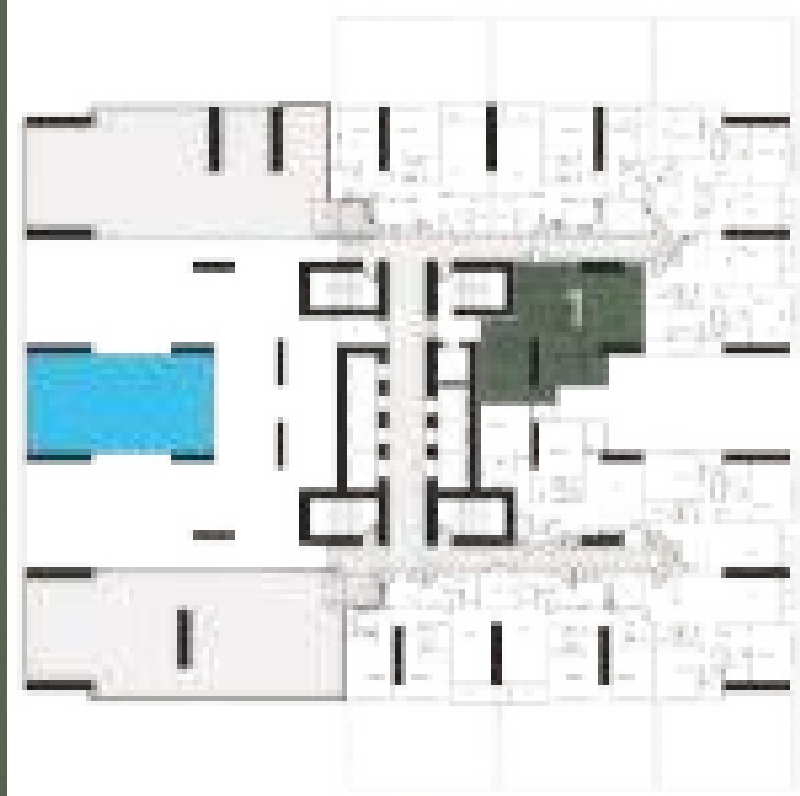


Community View

2 Bedrooms 

# SKY GARDENS

TOWER



## UNIT 101

2 Bedroom - Level 1

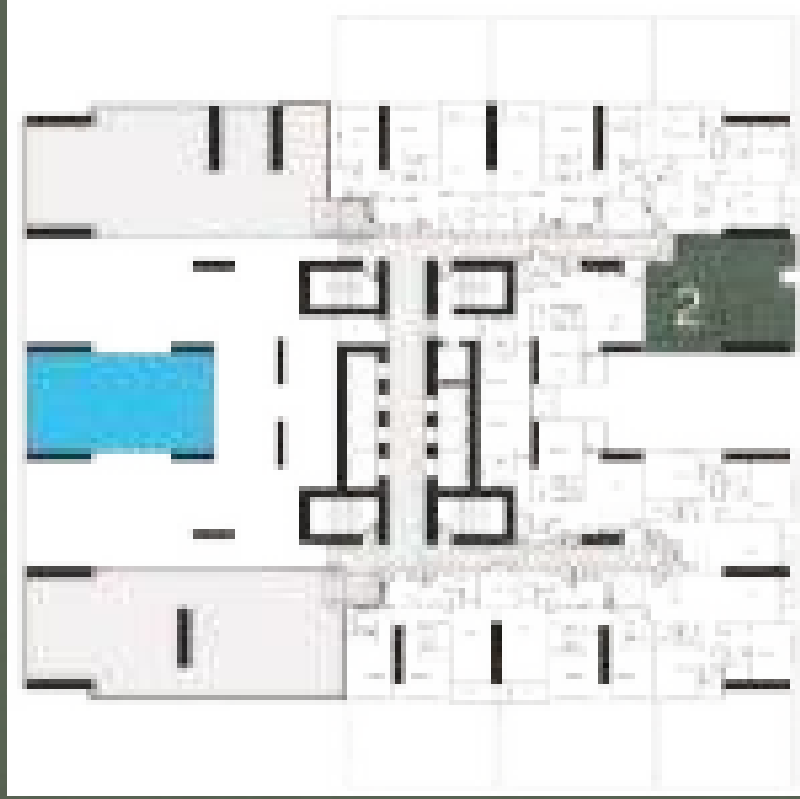
Gross Area: 1076.50 SQ.FT  
100.01 SQM.

Disclaimer:

- 1. All materials, finishes, dimensions and drawings are approximate.
- 2. Actual suite area may vary from the stated area.
- 3. Drawings are not to scale.
- 4. Information is subject to change without notice.
- 5. The Developer reserves the right to make revisions/alterations without any liability whatsoever.

# SKY GARDENS

TOWER



## UNIT 102

2 Bedroom - Level 1

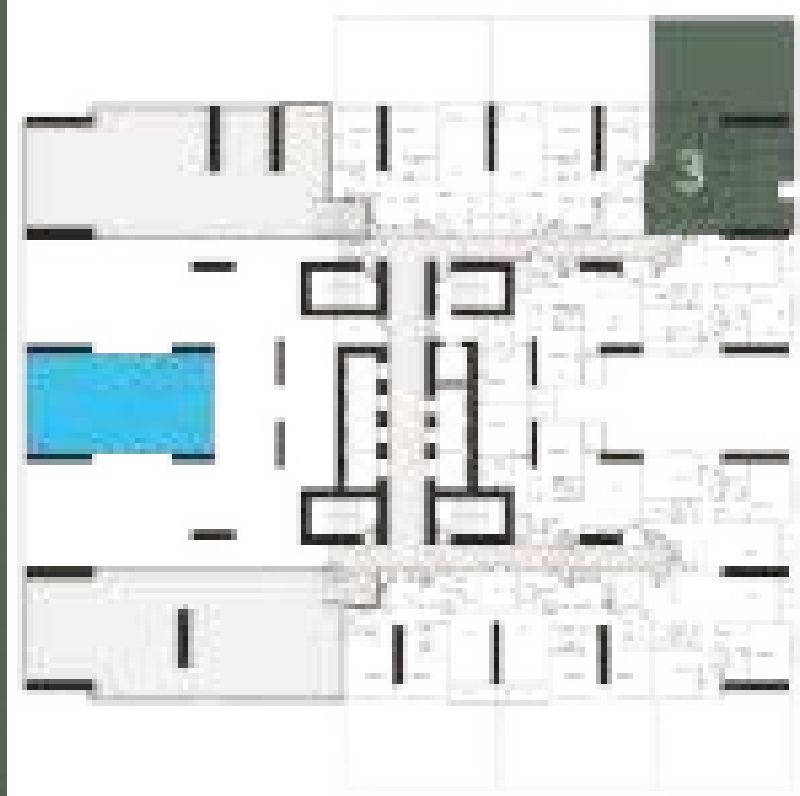
Gross Area: 1026.55 SQ.FT  
95.36 SQM.

Disclaimer:  
1. All materials, finishes, dimensions and drawings are approximate. 2. Actual suite area may vary from the stated area. 3. Drawings are not to scale. 4. Information is subject to change without notice.  
5. The Developer reserves the right to make revisions/alterations without any liability whatsoever.



# SKY GARDENS

TOWER



## UNIT 103

2 Bedroom - Level 1

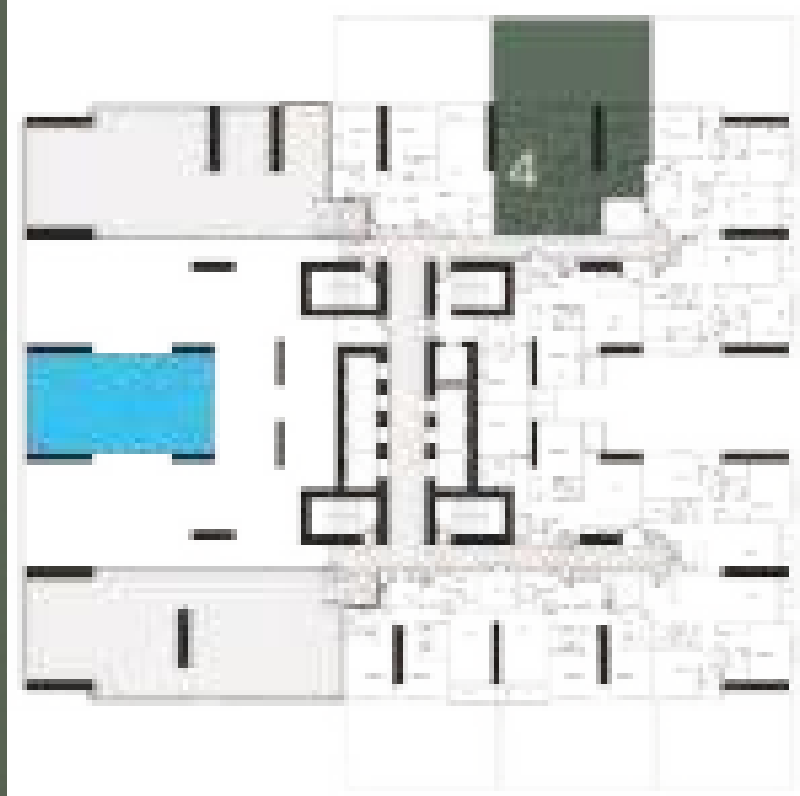
Gross Area: 2041.27 SQ.FT  
189.64 SQM.

Disclaimer:

- 1. All materials, finishes, dimensions and drawings are approximate.
- 2. Actual suite area may vary from the stated area.
- 3. Drawings are not to scale.
- 4. Information is subject to change without notice.
- 5. The Developer reserves the right to make revisions/alterations without any liability whatsoever.

# SKY GARDENS

TOWER



UNIT 104

2 Bedroom - Level 1

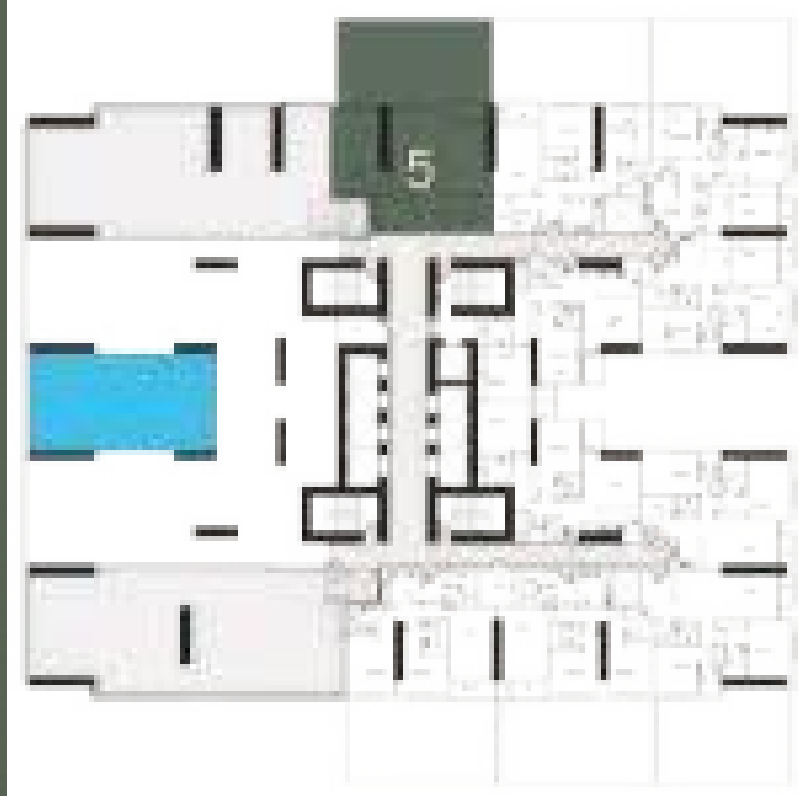
Gross Area: 2138.57 SQ.FT  
198.67 SQM.

Disclaimer:

- 1. All materials, finishes, dimensions and drawings are approximate.
- 2. Actual suite area may vary from the stated area.
- 3. Drawings are not to scale.
- 4. Information is subject to change without notice.
- 5. The Developer reserves the right to make revisions/alterations without any liability whatsoever.

# SKY GARDENS

TOWER



UNIT 105

2 Bedroom - Level 1

Gross Area:

2172.59 SQ.FT

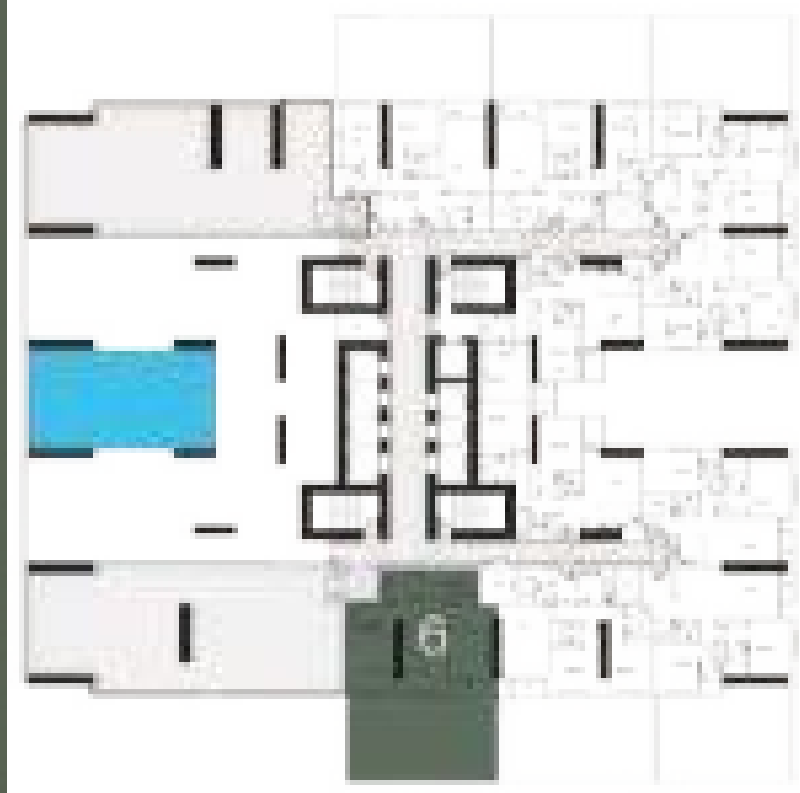
201.84 SQM.

Disclaimer:

- 1. All materials, finishes, dimensions and drawings are approximate.
- 2. Actual suite area may vary from the stated area.
- 3. Drawings are not to scale.
- 4. Information is subject to change without notice.
- 5. The Developer reserves the right to make revisions/alterations without any liability whatsoever.

# SKY GARDENS

TOWER



## UNIT 106

2 Bedroom - Level 1

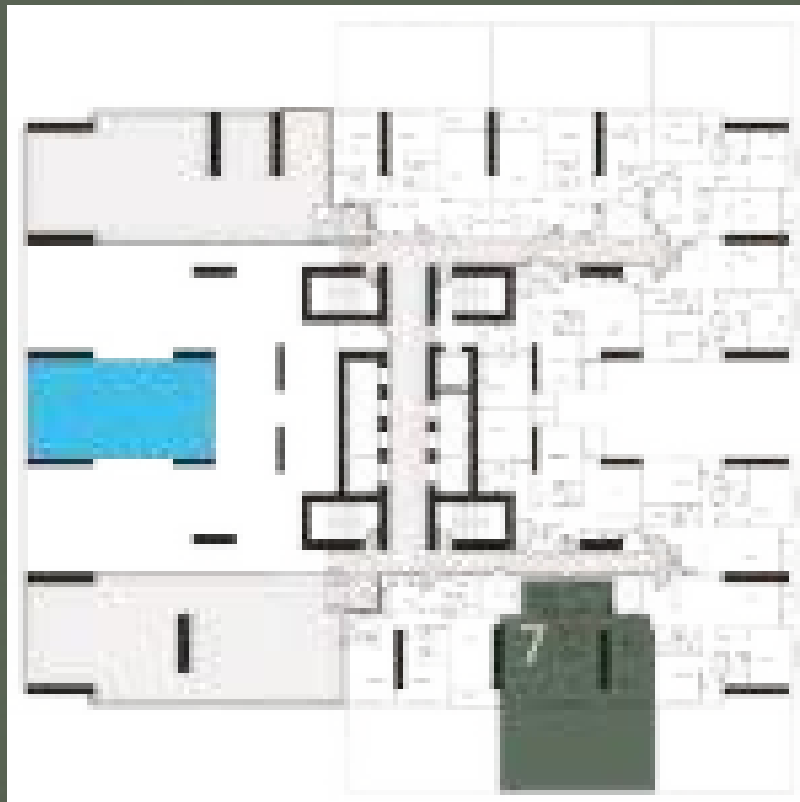
Gross Area: 1989.71 SQ.FT  
184.85 SQM.

Disclaimer:

- 1. All materials, finishes, dimensions and drawings are approximate.
- 2. Actual suite area may vary from the stated area.
- 3. Drawings are not to scale.
- 4. Information is subject to change without notice.
- 5. The Developer reserves the right to make revisions/alterations without any liability whatsoever.

# SKY GARDENS

TOWER



## UNIT 107

2 Bedroom - Level 1

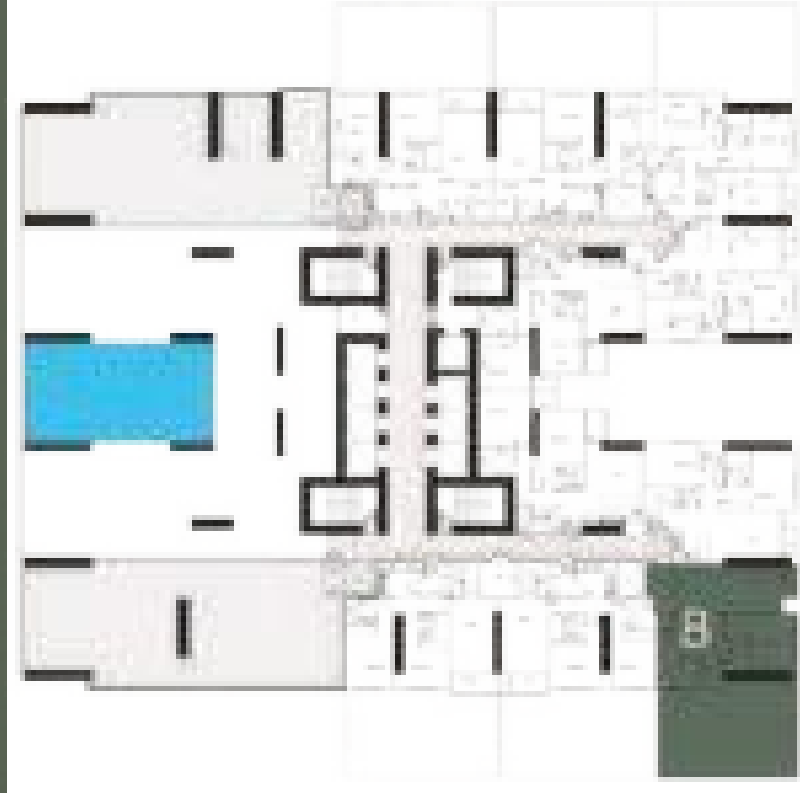
Gross Area: 2056.23 SQ.FT  
191.03 SQM.

Disclaimer:

- 1. All materials, finishes, dimensions and drawings are approximate.
- 2. Actual suite area may vary from the stated area.
- 3. Drawings are not to scale.
- 4. Information is subject to change without notice.
- 5. The Developer reserves the right to make revisions/alterations without any liability whatsoever.

# SKY GARDENS

TOWER



## UNIT 107

2 Bedroom - Level 1

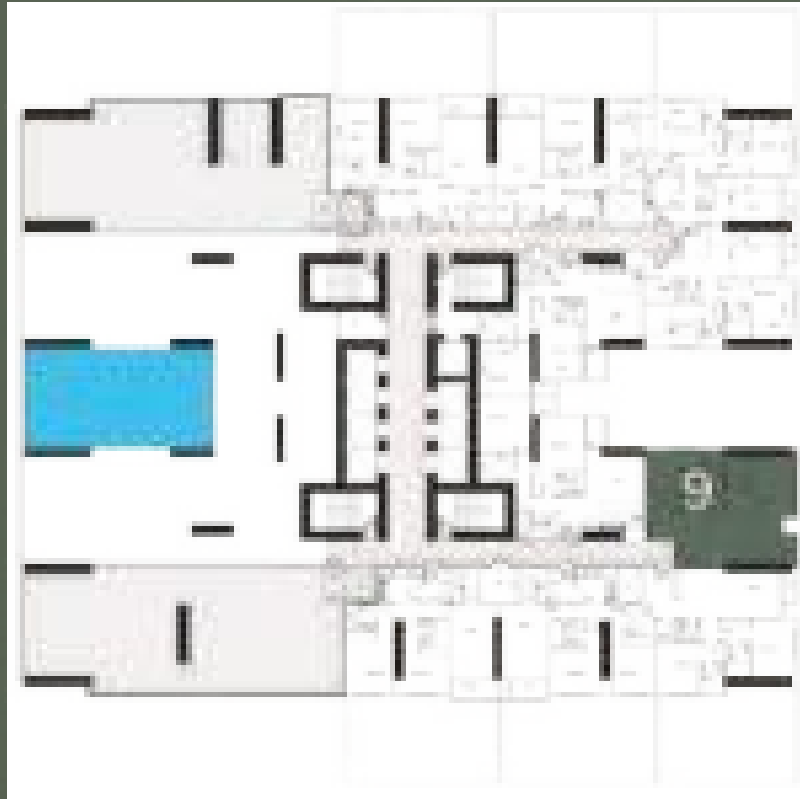
Gross Area: 1986.26 SQ.FT  
184.52 SQM.

Disclaimer:

- 1. All materials, finishes, dimensions and drawings are approximate.
- 2. Actual suite area may vary from the stated area.
- 3. Drawings are not to scale.
- 4. Information is subject to change without notice.
- 5. The Developer reserves the right to make revisions/alterations without any liability whatsoever.

# SKY GARDENS

TOWER



UNIT 109

2 Bedroom - Level 1

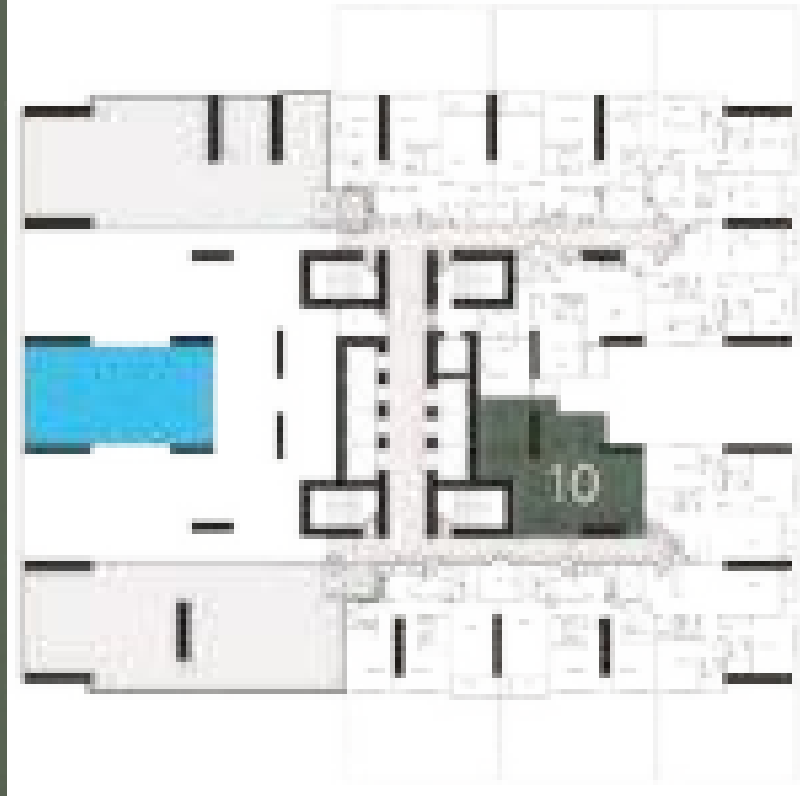
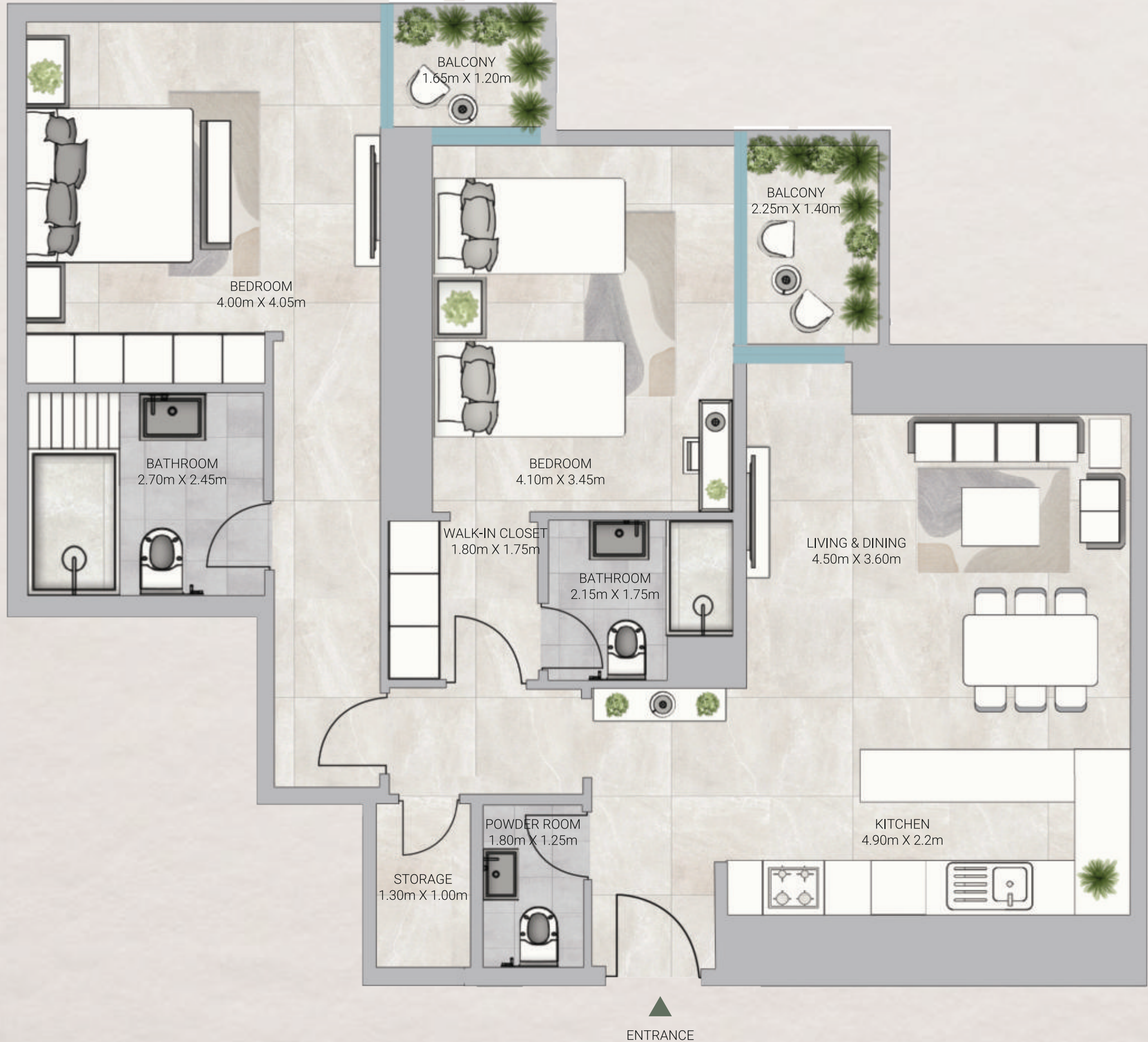
Gross Area: 1036.03 SQ.FT  
96.25 SQM.

Disclaimer:

- 1. All materials, finishes, dimensions and drawings are approximate.
- 2. Actual suite area may vary from the stated area.
- 3. Drawings are not to scale.
- 4. Information is subject to change without notice.
- 5. The Developer reserves the right to make revisions/alterations without any liability whatsoever.

# SKY GARDENS

TOWER



## UNIT 110

2 Bedroom - Level 1

Gross Area: 1058.52 SQ.FT  
98.33 SQM.

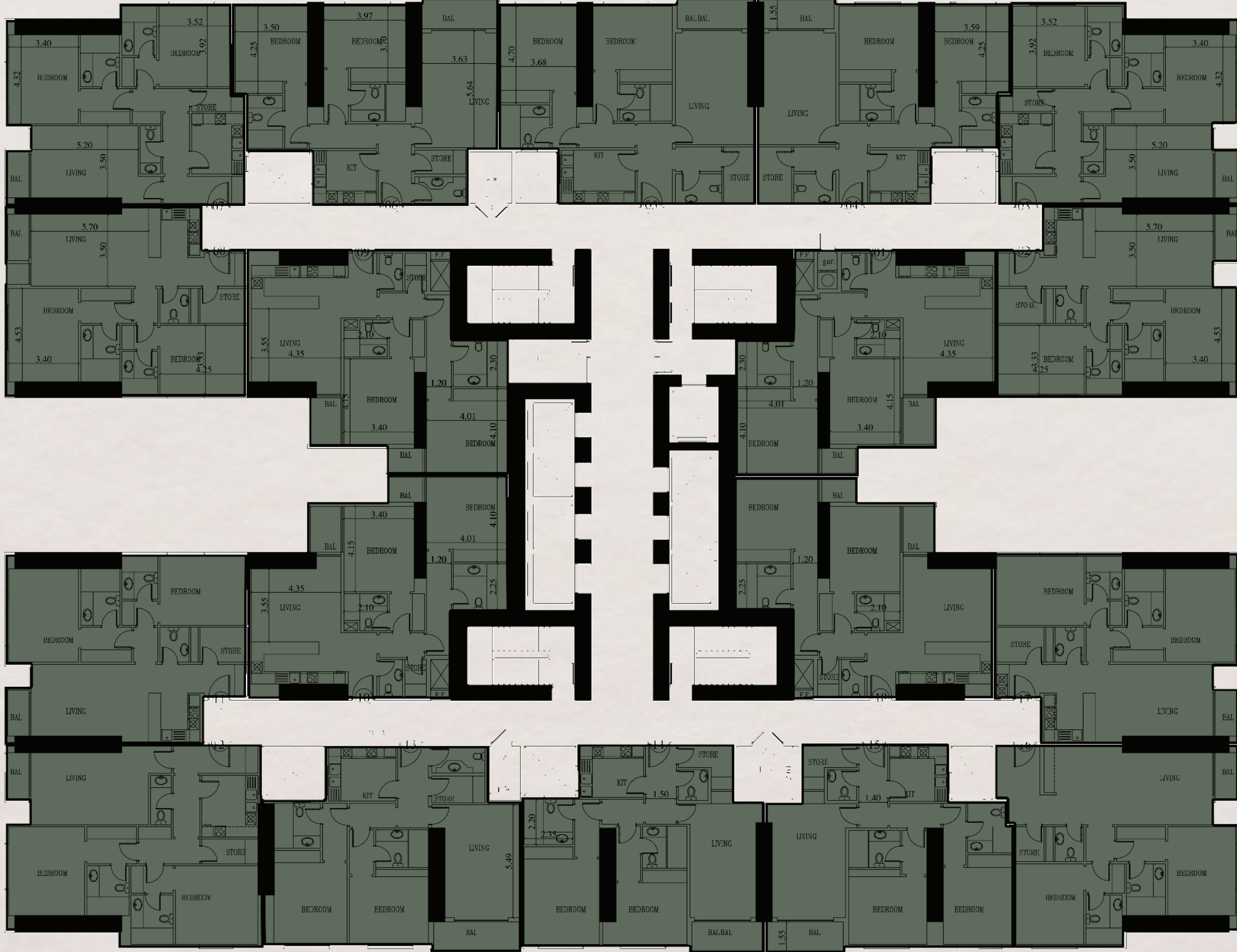
Disclaimer:

- 1. All materials, finishes, dimensions and drawings are approximate.
- 2. Actual suite area may vary from the stated area.
- 3. Drawings are not to scale.
- 4. Information is subject to change without notice.
- 5. The Developer reserves the right to make revisions/alterations without any liability whatsoever.



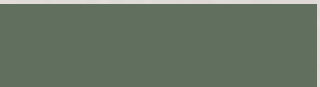
# Typical Floor Plan - Two Bedrooms

Mohd Bin Zayed Road



Community View

2 Bedrooms



# SKY GARDENS

TOWER



## UNIT 01

2 Bedroom - Level Typical

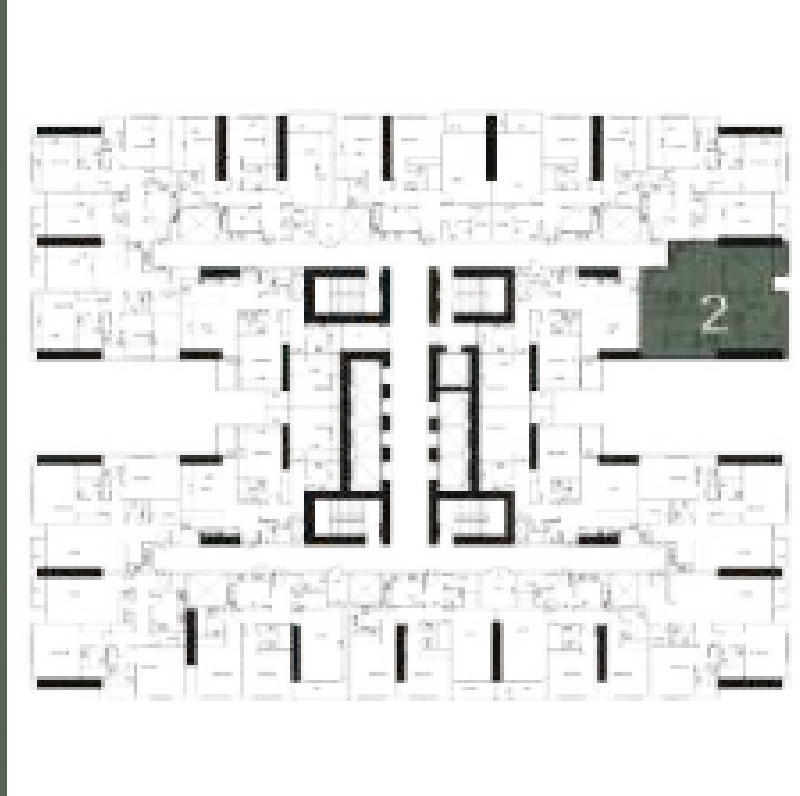
Gross Area: 1528.10 SQ.FT  
141.96 SQM.

Disclaimer:

- 1. All materials, finishes, dimensions and drawings are approximate.
- 2. Actual suite area may vary from the stated area.
- 3. Drawings are not to scale.
- 4. Information is subject to change without notice.
- 5. The Developer reserves the right to make revisions/alterations without any liability whatsoever.

# SKY GARDENS

TOWER



## UNIT 02

2 Bedroom - Level Typical

Gross Area: 1500.06 SQ.FT  
139.36 SQM.

Disclaimer:

- 1. All materials, finishes, dimensions and drawings are approximate.
- 2. Actual suite area may vary from the stated area.
- 3. Drawings are not to scale.
- 4. Information is subject to change without notice.
- 5. The Developer reserves the right to make revisions/alterations without any liability whatsoever.

# SKY GARDENS

TOWER



## UNIT 03

2 Bedroom - Level Typical

Gross Area: 1685.82 SQ.FT  
156.62 SQM.

Disclaimer:

- 1. All materials, finishes, dimensions and drawings are approximate.
- 2. Actual suite area may vary from the stated area.
- 3. Drawings are not to scale.
- 4. Information is subject to change without notice.
- 5. The Developer reserves the right to make revisions/alterations without any liability whatsoever.

# SKY GARDENS

TOWER



## UNIT 04

2 Bedroom - Level Typical

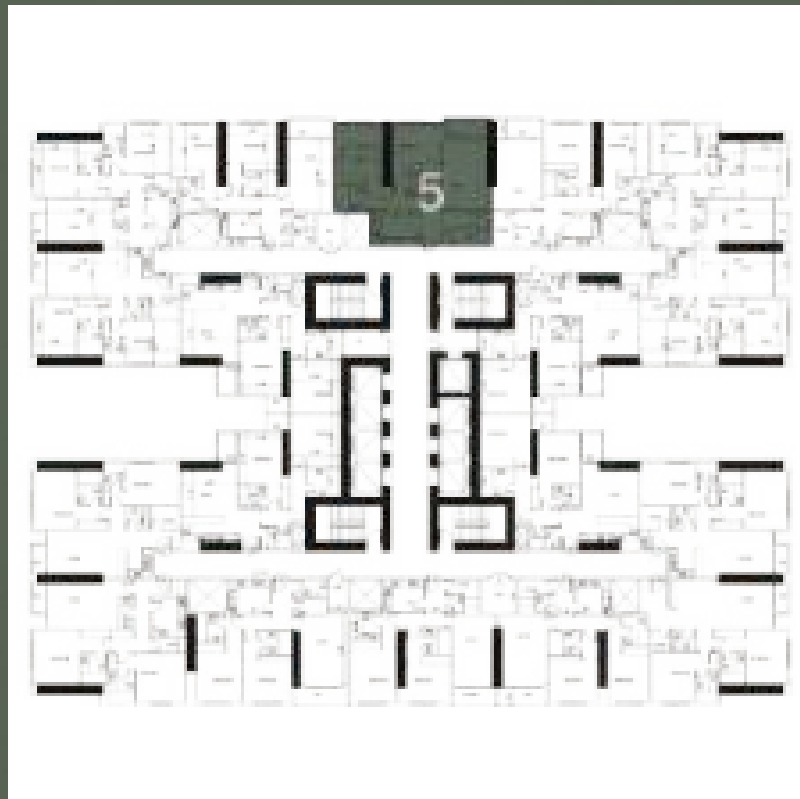
Gross Area: 1634.04 SQ.FT  
151.81 SQM.

Disclaimer:  
1. All materials, finishes, dimensions and drawings are approximate. 2. Actual suite area may vary from the stated area. 3. Drawings are not to scale. 4. Information is subject to change without notice.  
5. The Developer reserves the right to make revisions/alterations without any liability whatsoever.



# SKY GARDENS

TOWER



## UNIT 05

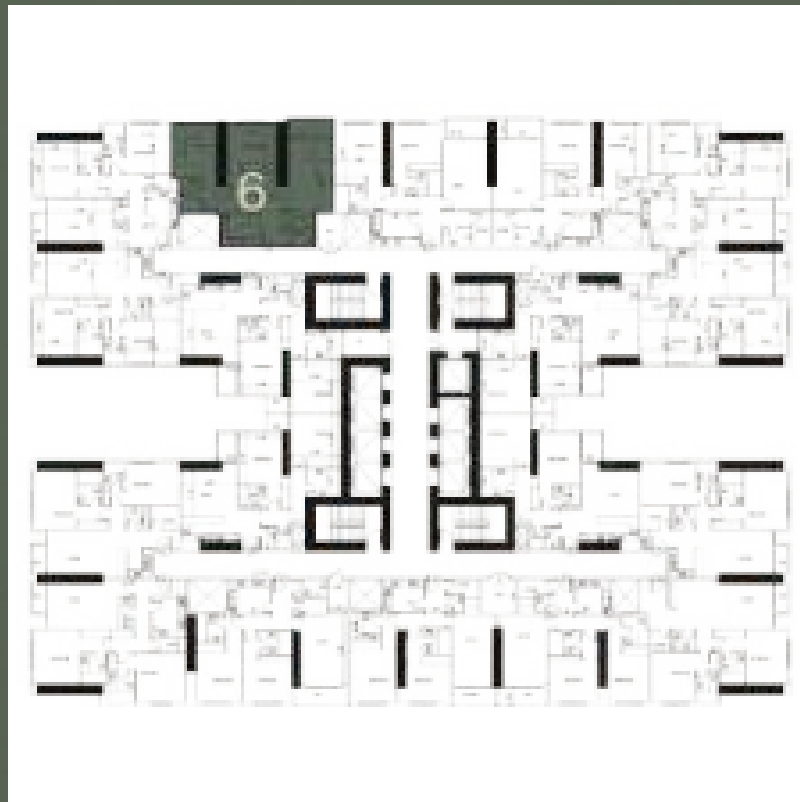
2 Bedroom - Level Typical

Gross Area: 1717.42 SQ.FT  
159.55 SQM.

Disclaimer:  
1. All materials, finishes, dimensions and drawings are approximate. 2. Actual suite area may vary from the stated area. 3. Drawings are not to scale. 4. Information is subject to change without notice.  
5. The Developer reserves the right to make revisions/alterations without any liability whatsoever.

# SKY GARDENS

TOWER



## UNIT 06

2 Bedroom - Level Typical

Gross Area: 1641.46 SQ.FT  
152.50 SQM.

Disclaimer:

- 1. All materials, finishes, dimensions and drawings are approximate.
- 2. Actual suite area may vary from the stated area.
- 3. Drawings are not to scale.
- 4. Information is subject to change without notice.
- 5. The Developer reserves the right to make revisions/alterations without any liability whatsoever.

# SKY GARDENS

TOWER



## UNIT 07

2 Bedroom - Level Typical

Gross Area: 1685.67 SQ.FT  
156.60 SQM.

Disclaimer:

- 1. All materials, finishes, dimensions and drawings are approximate.
- 2. Actual suite area may vary from the stated area.
- 3. Drawings are not to scale.
- 4. Information is subject to change without notice.
- 5. The Developer reserves the right to make revisions/alterations without any liability whatsoever.

# SKY GARDENS

TOWER



## UNIT 08

2 Bedroom - Level Typical

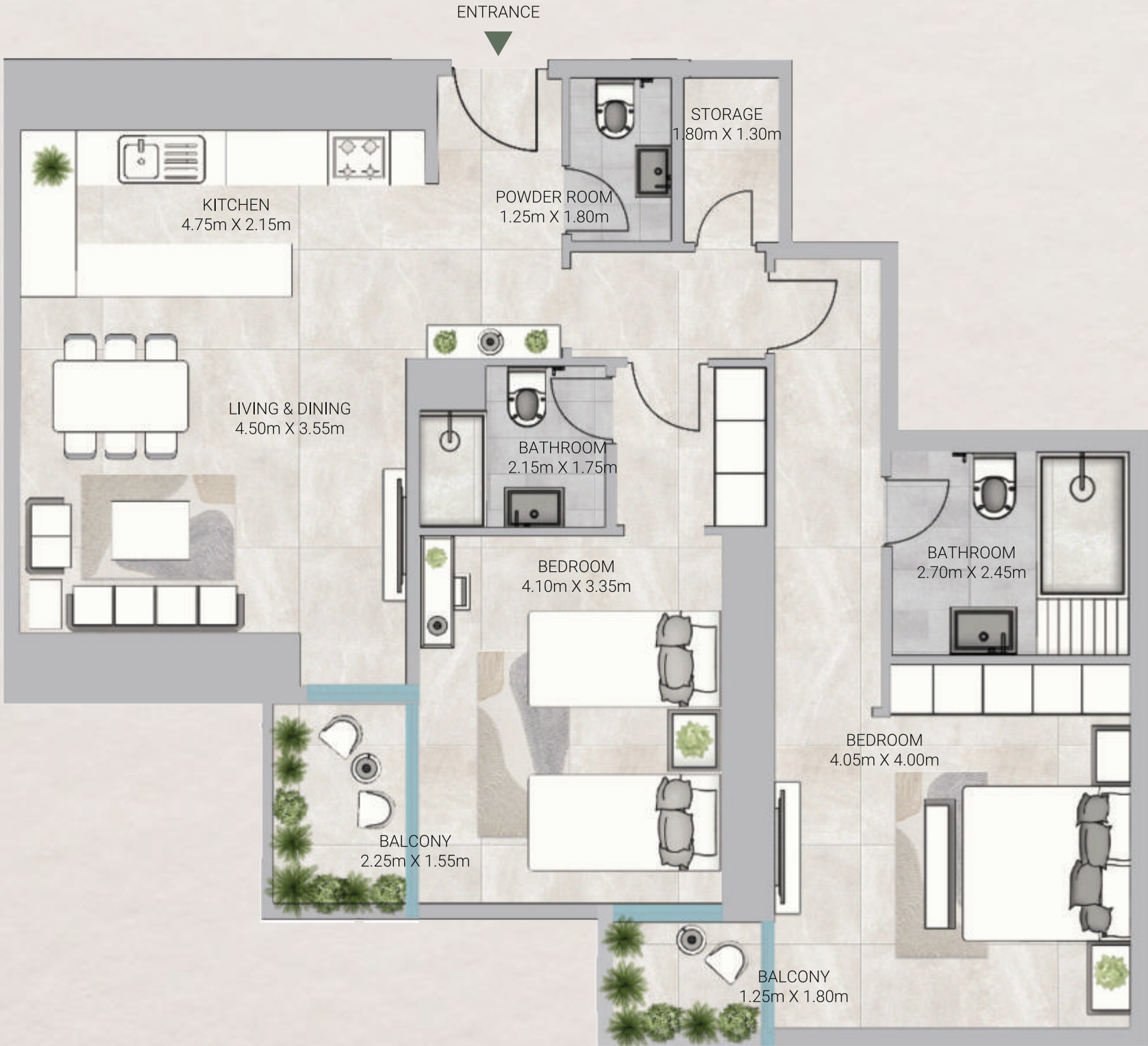
Gross Area: 1500.65 SQ.FT  
139.41 SQM.

Disclaimer:

- 1. All materials, finishes, dimensions and drawings are approximate.
- 2. Actual suite area may vary from the stated area.
- 3. Drawings are not to scale.
- 4. Information is subject to change without notice.
- 5. The Developer reserves the right to make revisions/alterations without any liability whatsoever.

# SKY GARDENS

TOWER



## UNIT 09

2 Bedroom - Level Typical

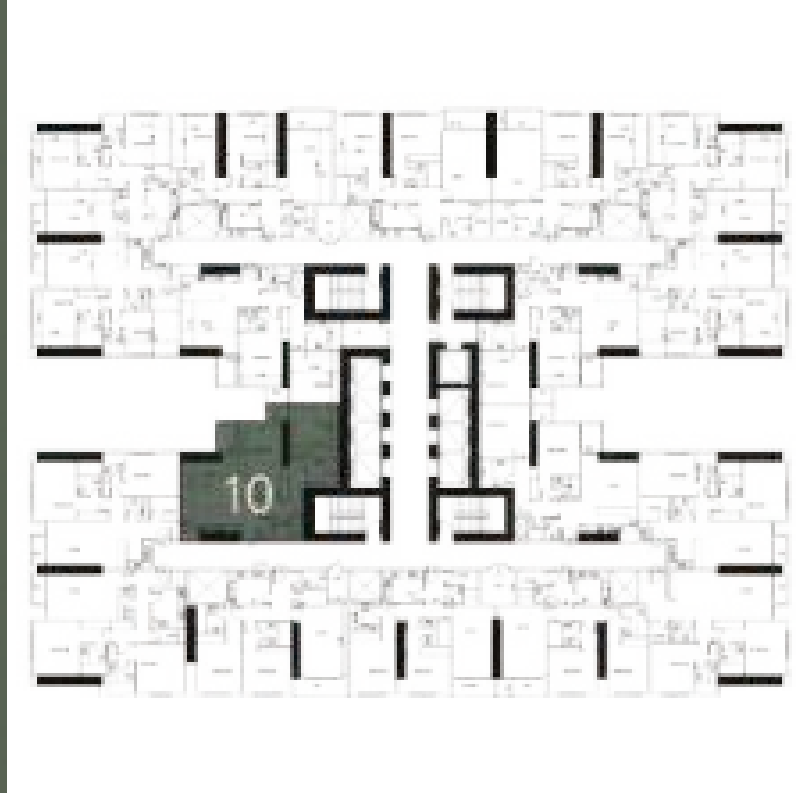
Gross Area: 1528.25 SQ.FT  
141.98 SQM.

Disclaimer:

- 1. All materials, finishes, dimensions and drawings are approximate.
- 2. Actual suite area may vary from the stated area.
- 3. Drawings are not to scale.
- 4. Information is subject to change without notice.
- 5. The Developer reserves the right to make revisions/alterations without any liability whatsoever.

# SKY GARDENS

TOWER



## UNIT 010

2 Bedroom - Level Typical

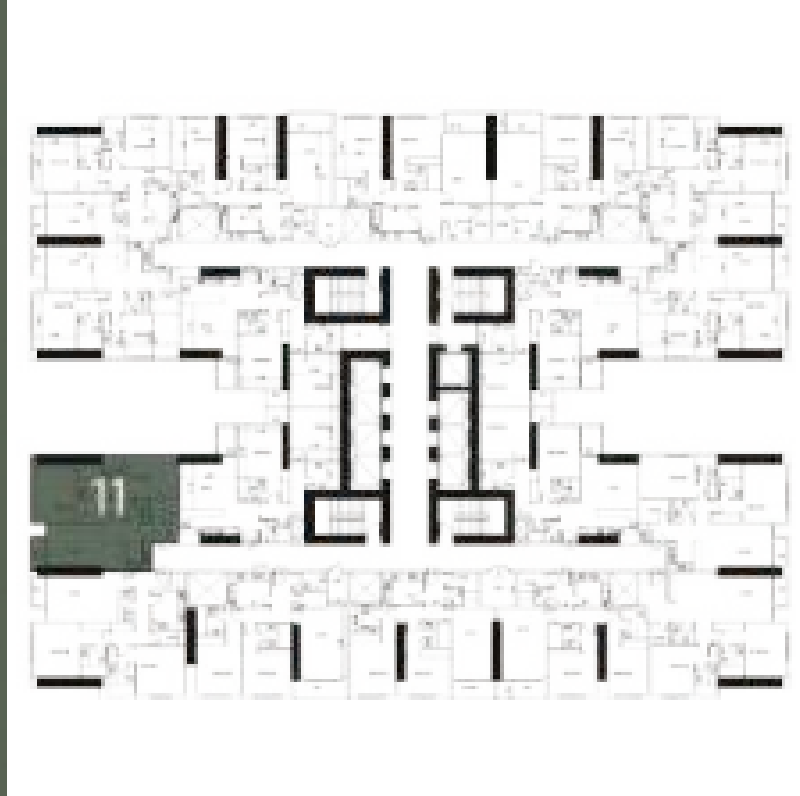
Gross Area: 1503.91 SQ.FT  
139.72 SQM.

Disclaimer:  
1. All materials, finishes, dimensions and drawings are approximate. 2. Actual suite area may vary from the stated area. 3. Drawings are not to scale. 4. Information is subject to change without notice.  
5. The Developer reserves the right to make revisions/alterations without any liability whatsoever.



# SKY GARDENS

TOWER



## UNIT 011

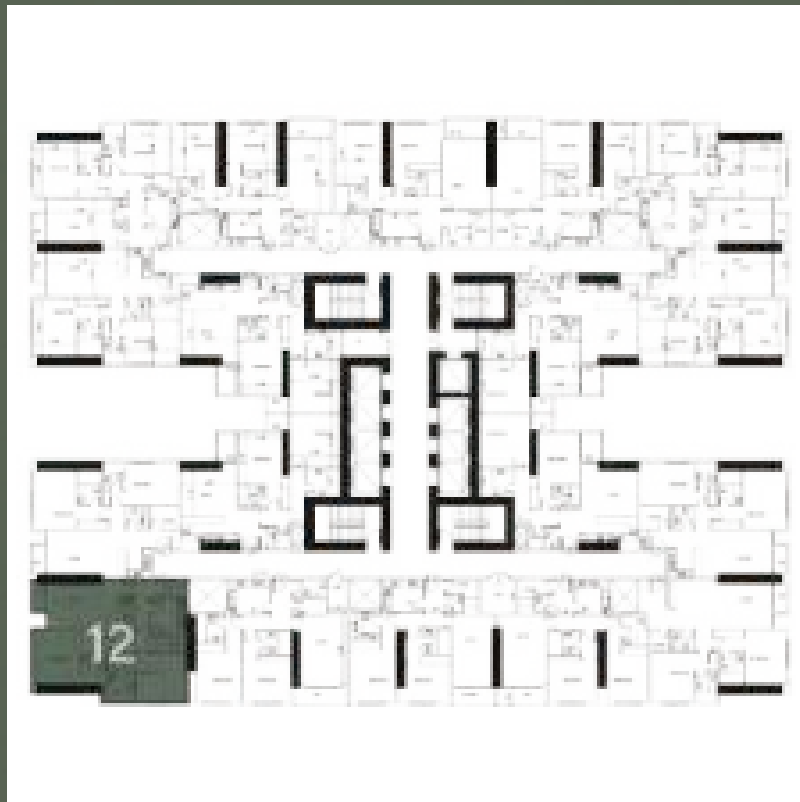
2 Bedroom - Level Typical

Gross Area: 1500.06 SQ.FT  
139.36 SQM.

Disclaimer:  
1. All materials, finishes, dimensions and drawings are approximate. 2. Actual suite area may vary from the stated area. 3. Drawings are not to scale. 4. Information is subject to change without notice.  
5. The Developer reserves the right to make revisions/alterations without any liability whatsoever.

# SKY GARDENS

TOWER



## UNIT 012

2 Bedroom - Level Typical

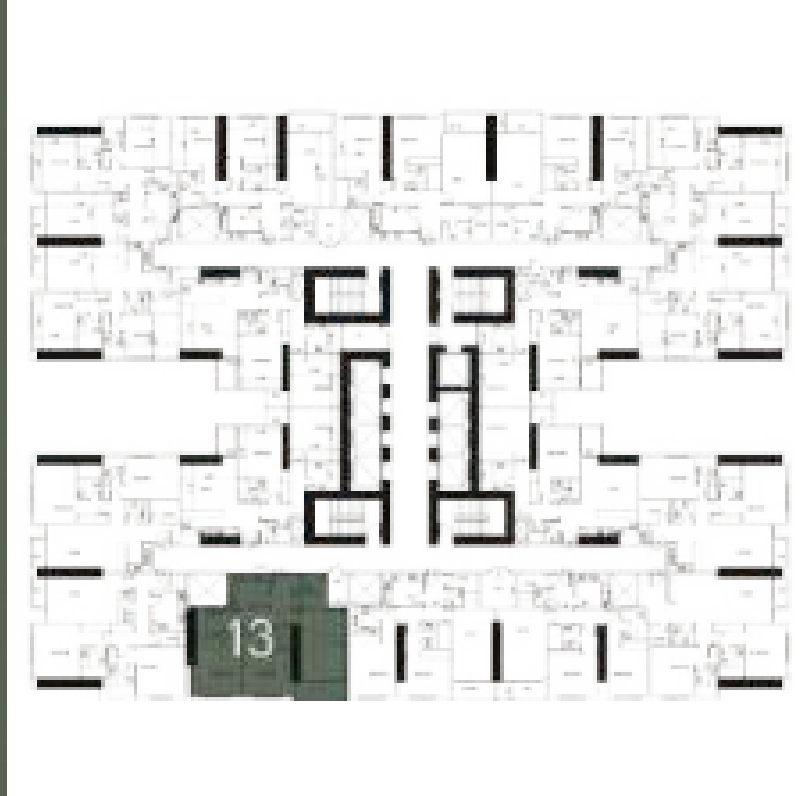
Gross Area: 1853.27 SQ.FT  
172.17 SQM.

Disclaimer:

- 1. All materials, finishes, dimensions and drawings are approximate.
- 2. Actual suite area may vary from the stated area.
- 3. Drawings are not to scale.
- 4. Information is subject to change without notice.
- 5. The Developer reserves the right to make revisions/alterations without any liability whatsoever.

# SKY GARDENS

TOWER



## UNIT 013

2 Bedroom - Level Typical

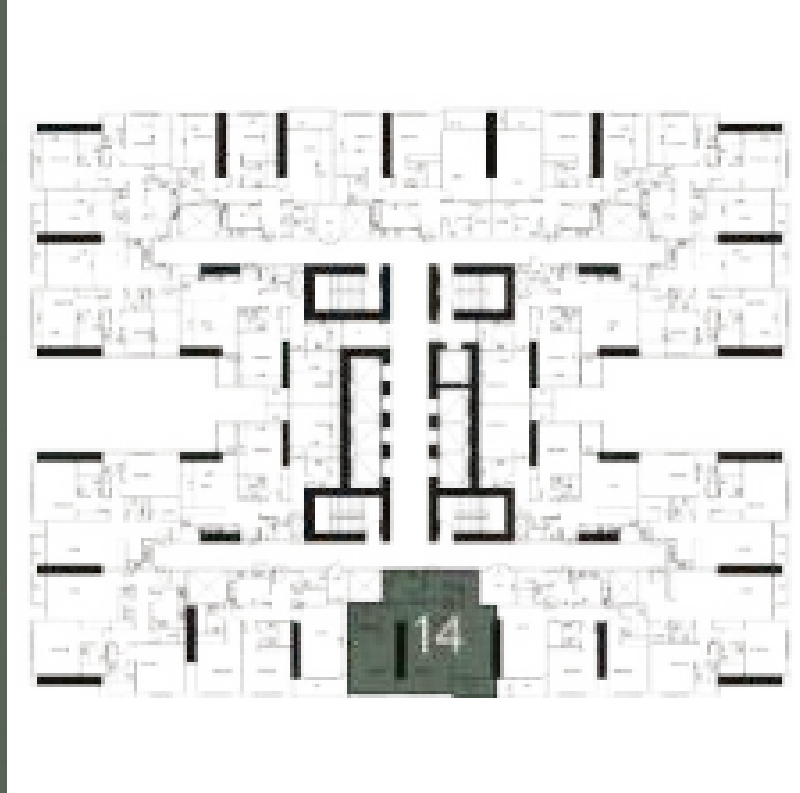
Gross Area: 1601.84 SQ.FT  
148.82 SQM.

Disclaimer:

- 1. All materials, finishes, dimensions and drawings are approximate.
- 2. Actual suite area may vary from the stated area.
- 3. Drawings are not to scale.
- 4. Information is subject to change without notice.
- 5. The Developer reserves the right to make revisions/alterations without any liability whatsoever.

# SKY GARDENS

TOWER



## UNIT 014

2 Bedroom - Level Typical

Gross Area: 1543.53 SQ.FT  
143.40 SQM.

Disclaimer:

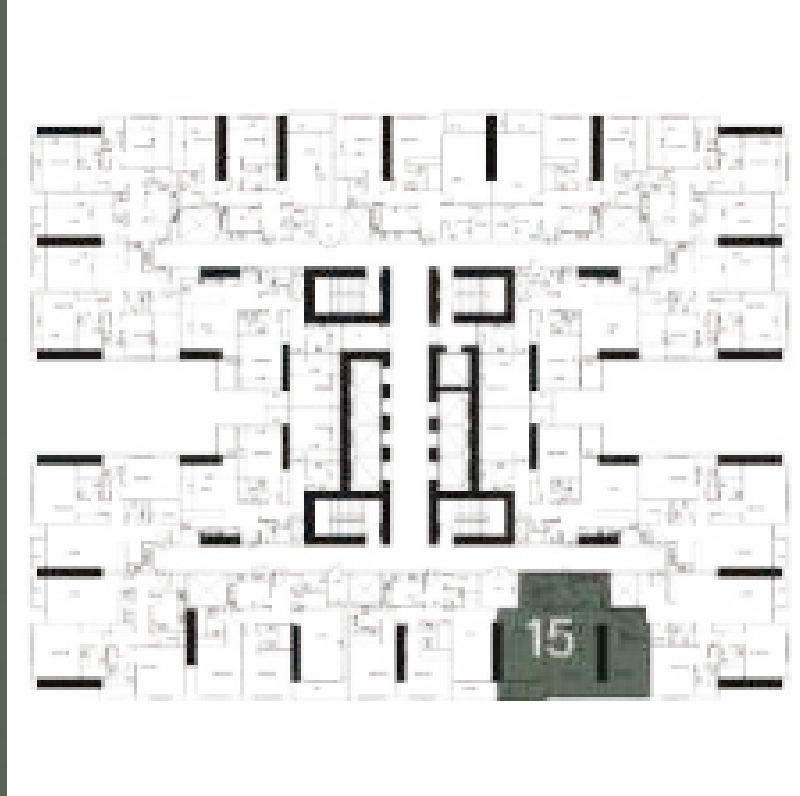
- 1. All materials, finishes, dimensions and drawings are approximate.
- 2. Actual suite area may vary from the stated area.
- 3. Drawings are not to scale.
- 4. Information is subject to change without notice.
- 5. The Developer reserves the right to make revisions/alterations without any liability whatsoever.

DONT  
DREAM  
OF IT.  
TRAIN  
FOR IT.



# SKY GARDENS

TOWER



## UNIT 015

2 Bedroom - Level Typical

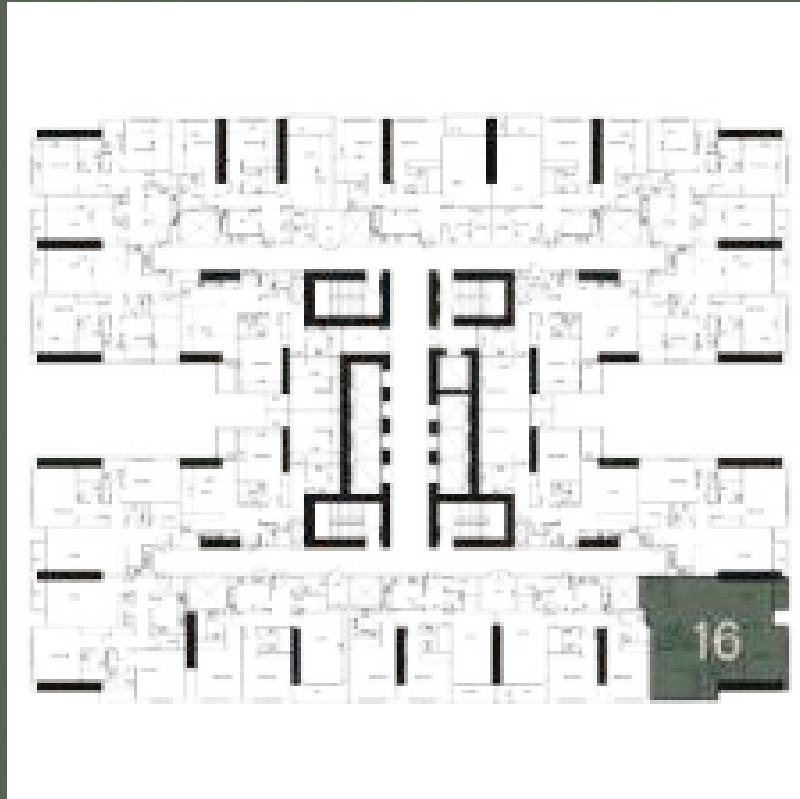
Gross Area: 1562.22 SQ.FT  
145.14 SQM.

Disclaimer:

- 1. All materials, finishes, dimensions and drawings are approximate.
- 2. Actual suite area may vary from the stated area.
- 3. Drawings are not to scale.
- 4. Information is subject to change without notice.
- 5. The Developer reserves the right to make revisions/alterations without any liability whatsoever.

# SKY GARDENS

TOWER



## UNIT 016

2 Bedroom - Level Typical

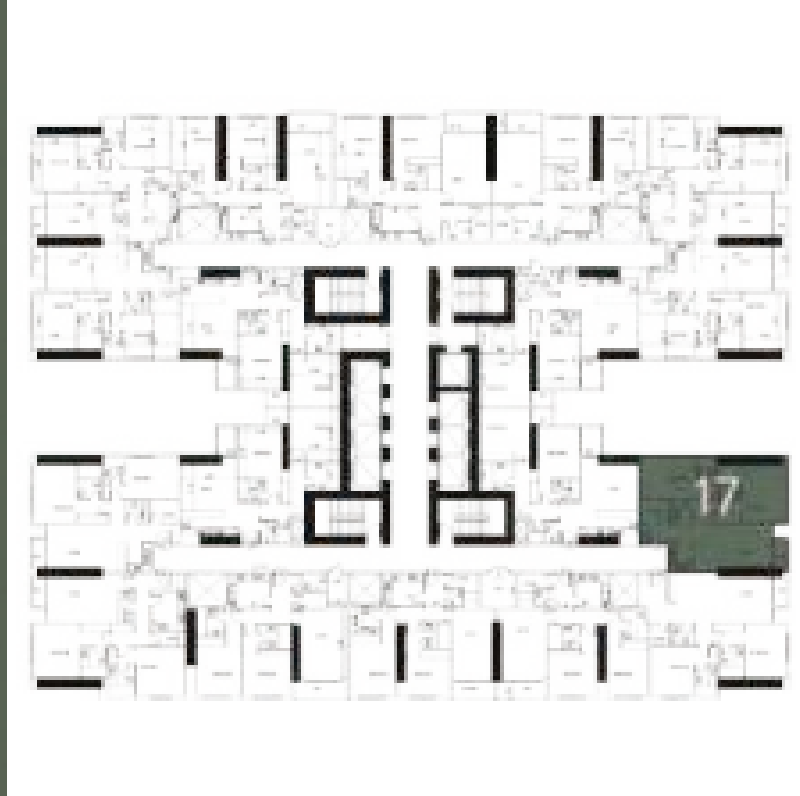
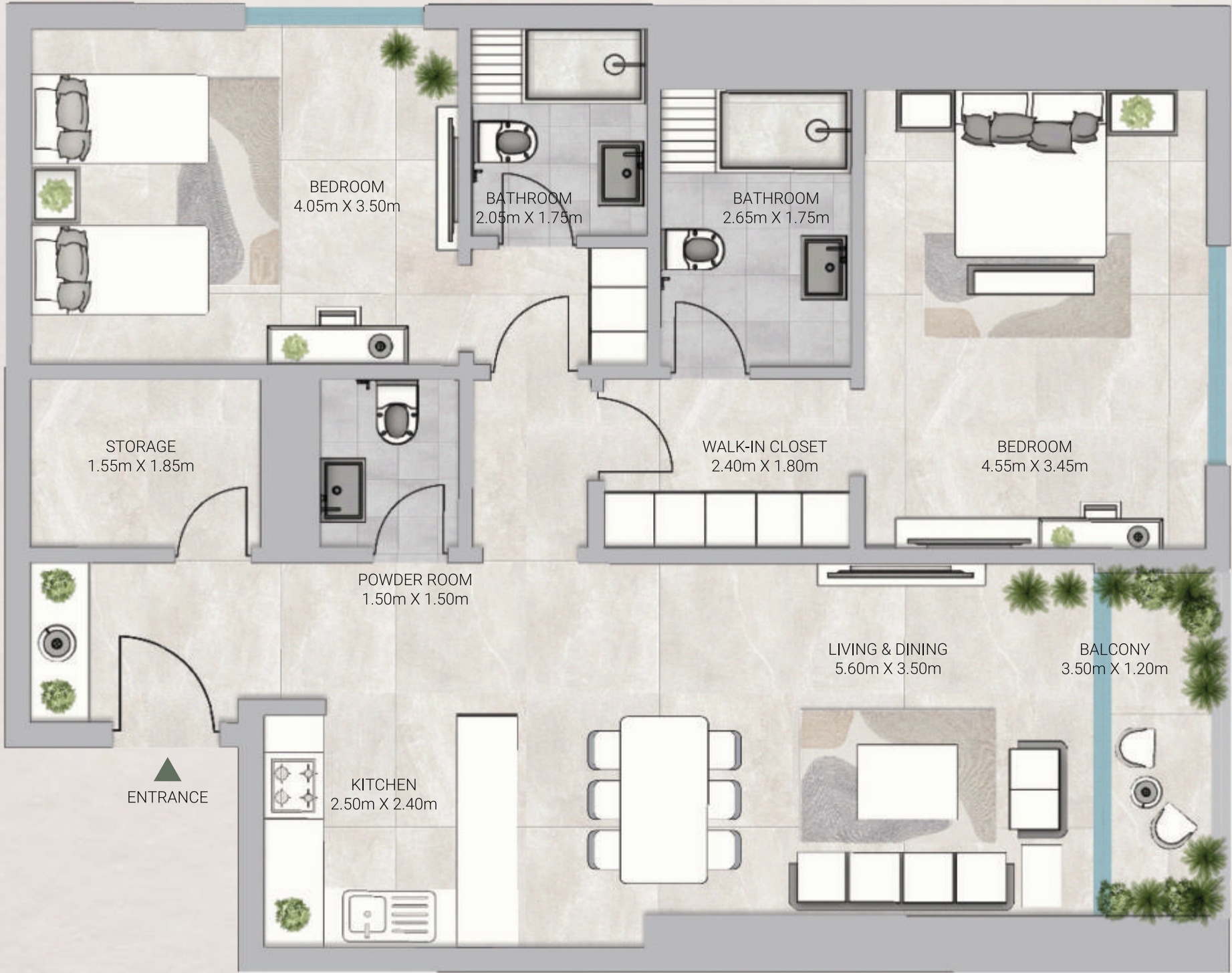
Gross Area: 1610.05 SQ.FT  
149.58 SQM.

Disclaimer:

- 1. All materials, finishes, dimensions and drawings are approximate.
- 2. Actual suite area may vary from the stated area.
- 3. Drawings are not to scale.
- 4. Information is subject to change without notice.
- 5. The Developer reserves the right to make revisions/alterations without any liability whatsoever.

# SKY GARDENS

TOWER



## UNIT 017

2 Bedroom - Level Typical

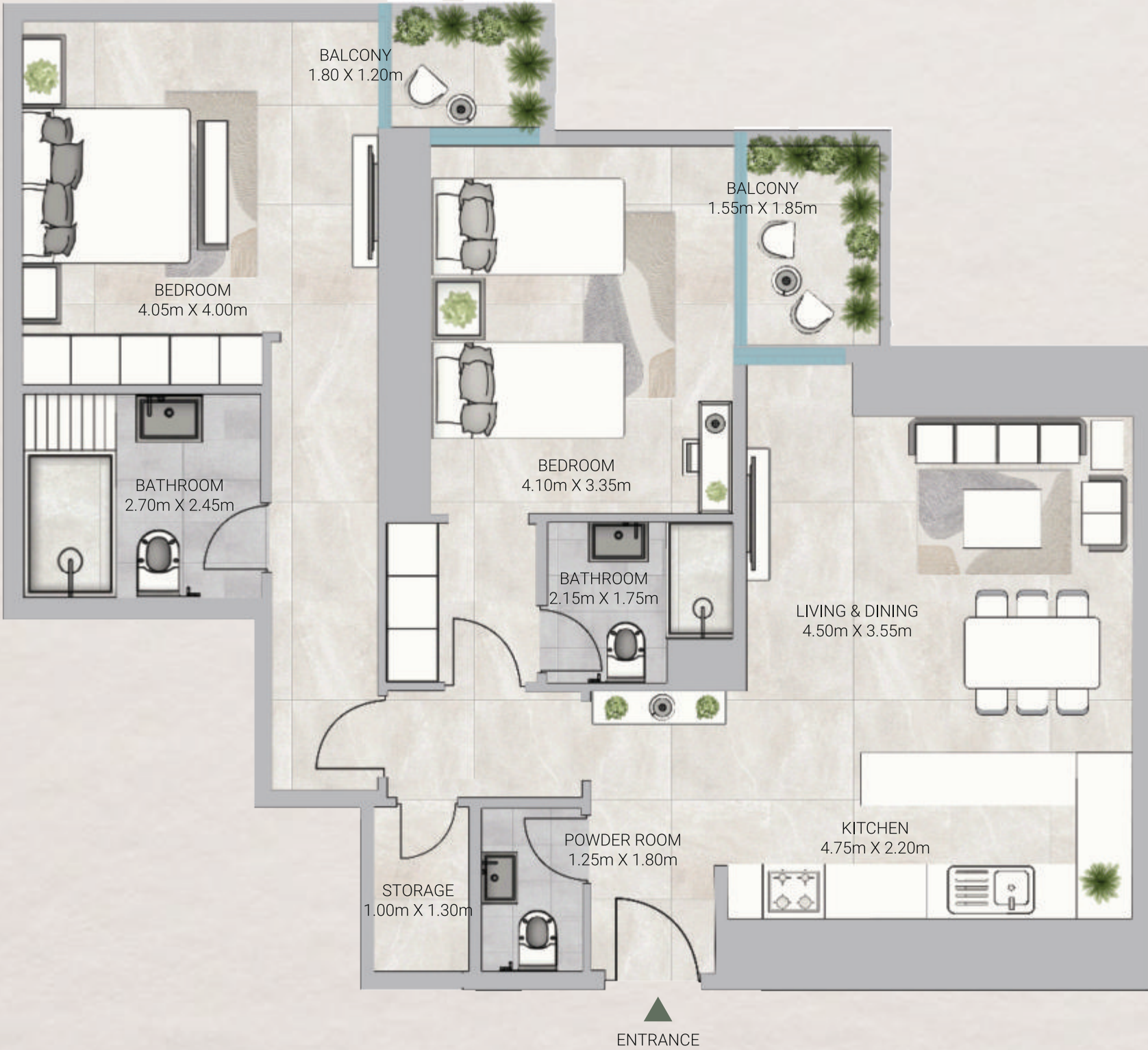
Gross Area: 1513.11 SQ.FT  
140.57 SQM.

Disclaimer:

- 1. All materials, finishes, dimensions and drawings are approximate.
- 2. Actual suite area may vary from the stated area.
- 3. Drawings are not to scale.
- 4. Information is subject to change without notice.
- 5. The Developer reserves the right to make revisions/alterations without any liability whatsoever.

# SKY GARDENS

TOWER



## UNIT 018

2 Bedroom - Level Typical

Gross Area: 1527.65 SQ.FT  
141.92 SQM.

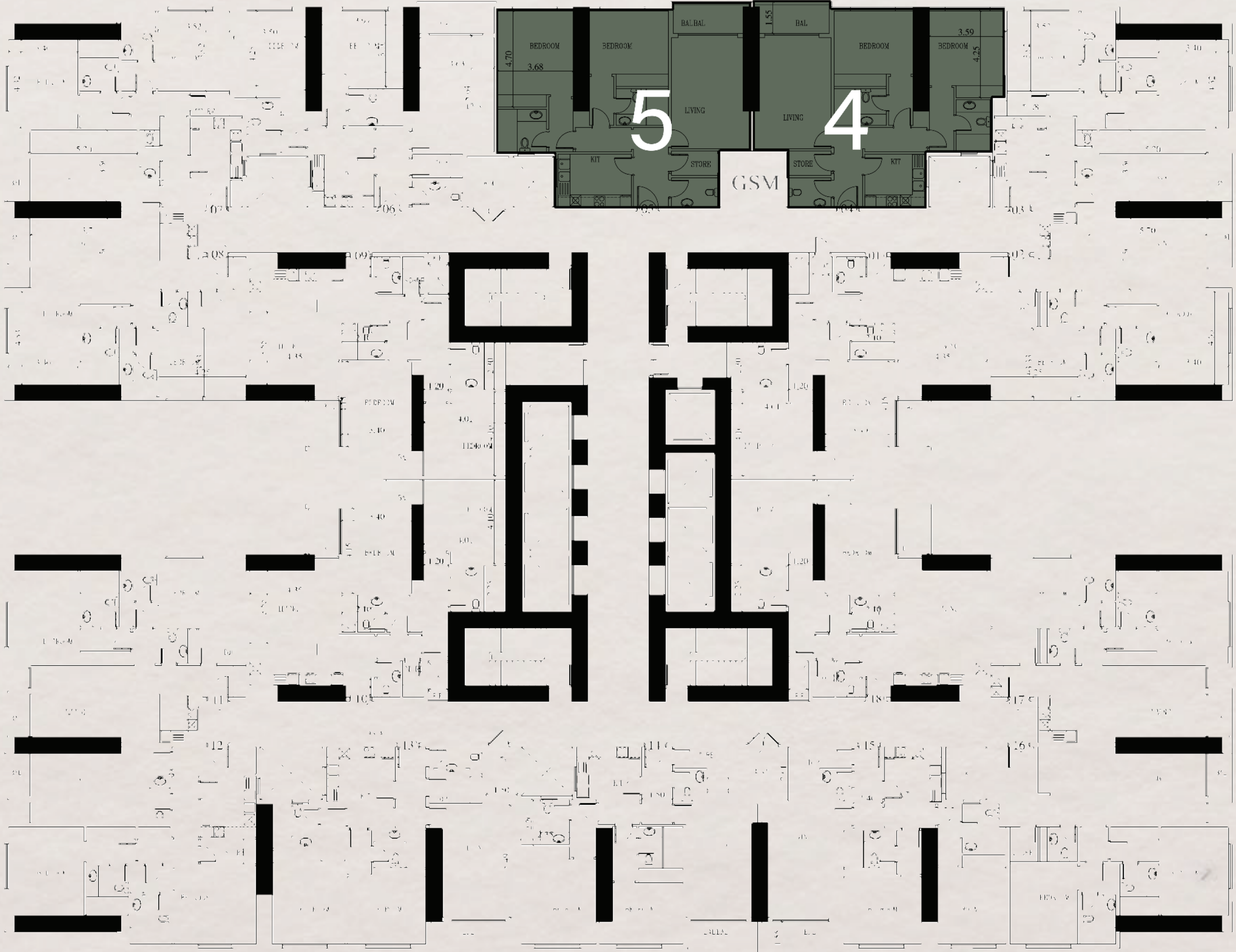
Disclaimer:

- 1. All materials, finishes, dimensions and drawings are approximate.
- 2. Actual suite area may vary from the stated area.
- 3. Drawings are not to scale.
- 4. Information is subject to change without notice.
- 5. The Developer reserves the right to make revisions/alterations without any liability whatsoever.



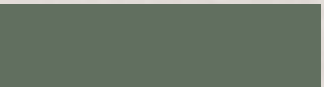
# 10TH AND 30TH Floor Plan - Two Bedrooms

Mohd Bin Zayed Road



Community View

2 Bedrooms



# SKY GARDENS

TOWER



## UNIT 04

2 Bedroom - Level 10th & 30th

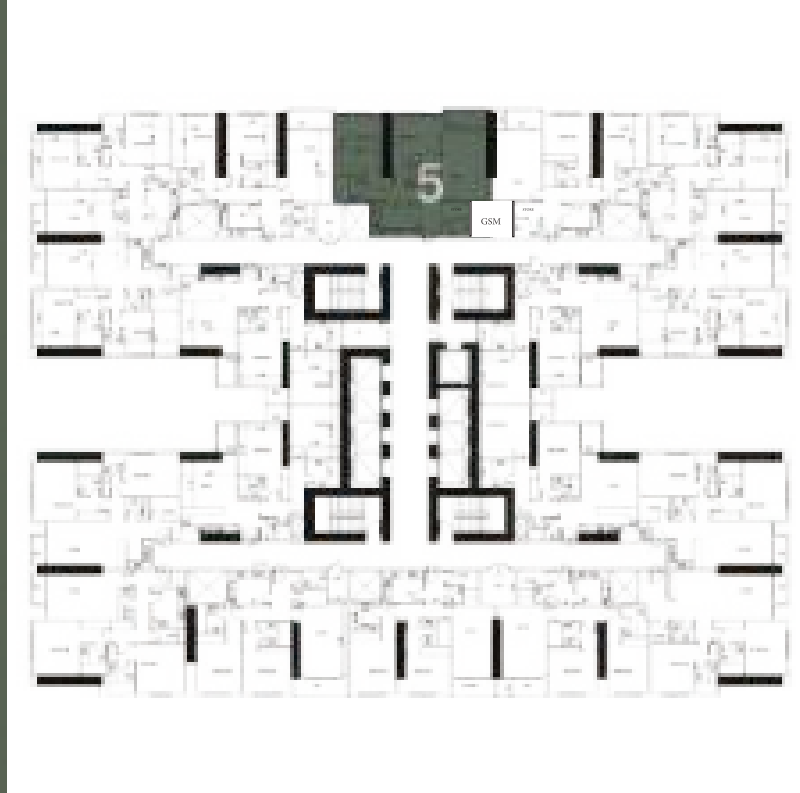
Gross Area: 1548.43 SQ.FT  
143.85 SQM.

Disclaimer:

- 1. All materials, finishes, dimensions and drawings are approximate.
- 2. Actual suite area may vary from the stated area.
- 3. Drawings are not to scale.
- 4. Information is subject to change without notice.
- 5. The Developer reserves the right to make revisions/alterations without any liability whatsoever.

# SKY GARDENS

TOWER



## UNIT 05

2 Bedroom - Level 10th & 30th

Gross Area: 1631.96 SQ.FT  
151.61 SQM.

Disclaimer:

- 1. All materials, finishes, dimensions and drawings are approximate.
- 2. Actual suite area may vary from the stated area.
- 3. Drawings are not to scale.
- 4. Information is subject to change without notice.
- 5. The Developer reserves the right to make revisions/alterations without any liability whatsoever.

# GJ Properties

## The Name Shaping Ajman

GJ Properties has established itself as a premier luxury real estate developer in Ajman and the Northern Emirates, delivering high-quality projects that exemplify a commitment to excellence. With a mission to create living spaces that offer an exceptional quality of life, the brand seamlessly blends human-centric design with superior build quality.

By focusing on prime locations, innovative architecture, and responsive maintenance, each development is designed to exceed the aspirations of a discerning clientele. As the portfolio continues to expand, including ventures like the Biltmore Residences Sufouh in Dubai, GJ Properties remains dedicated to solidifying its position as Ajman's leading private developer.







UAE: +971 58 586 4405  
CH: +41 79 777 3773  
info@majara-realestate.com  
www.majara-realestate.com

MAJARA REAL ESTATE L.L.C  
Burj Al Salam Tower, 36th floor  
Sheikh Zayed Road  
Dubai, U.A.E.



جى اى ال عقارية  
PROPERTIES