

# SKY GARDENS

TOWER

**Sky Garden Residences — Your Urban Oasis in Ajman**

# MAJARA LUXURY REAL ESTATE LLC

Head Office Level 36-01, Po Box :124382 , Trade Center 1, Sheikh Zayed Road , Burj Al Salam Tower Dubai UAE

**Majara Offers Sky Garden Residences — Ajman's New Landmark**





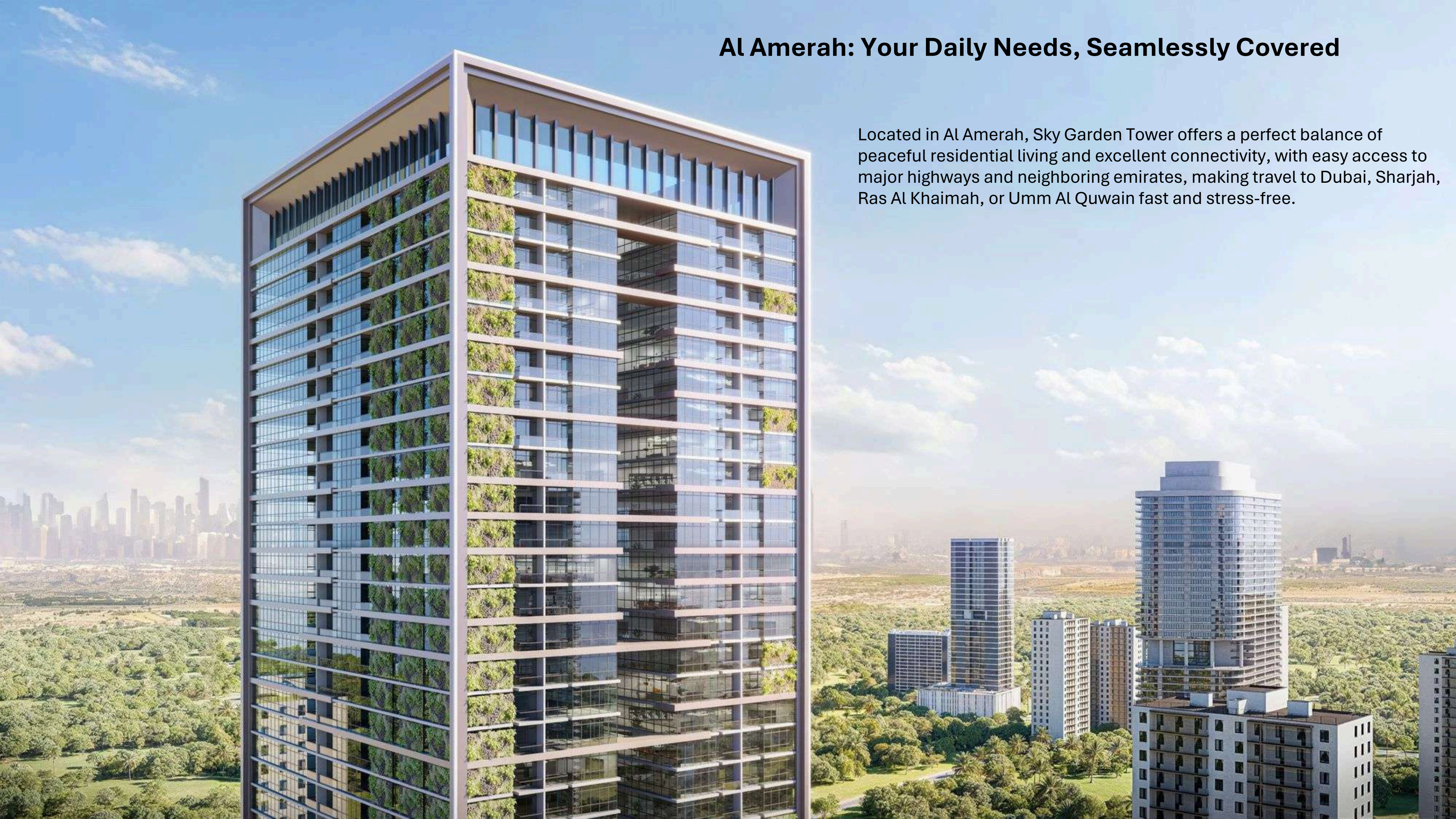
## Redefining Urban Living in Ajman

Ajman balances urban growth with serene living, and in its dynamic Emirates City, Sky Garden Tower emerges as a residential landmark, blending modern elegance, convenience, and sustainable design for discerning individuals and families.



## Al Amerah: Your Daily Needs, Seamlessly Covered

Located in Al Amerah, Sky Garden Tower offers a perfect balance of peaceful residential living and excellent connectivity, with easy access to major highways and neighboring emirates, making travel to Dubai, Sharjah, Ras Al Khaimah, or Umm Al Quwain fast and stress-free.





## A Tower That Redefines Luxury and Comfort

Sky Gardens Tower in Emirates City combines contemporary design with everyday convenience. Perfect for families and investors alike, it features a prime location, premium amenities, and spacious 2-bedroom apartments with freehold ownership, offering a refined urban lifestyle.



## Sophistication, Comfort, and Sustainability in Every Detail

Sky Garden Tower offers 741 thoughtfully designed residences, featuring open-plan layouts, premium finishes, and abundant natural light. Inspired by the Hanging Gardens of Babylon, the tower integrates sustainable elements such as lush hanging gardens and a striking green façade, creating a harmonious blend of luxury and eco-friendly living.















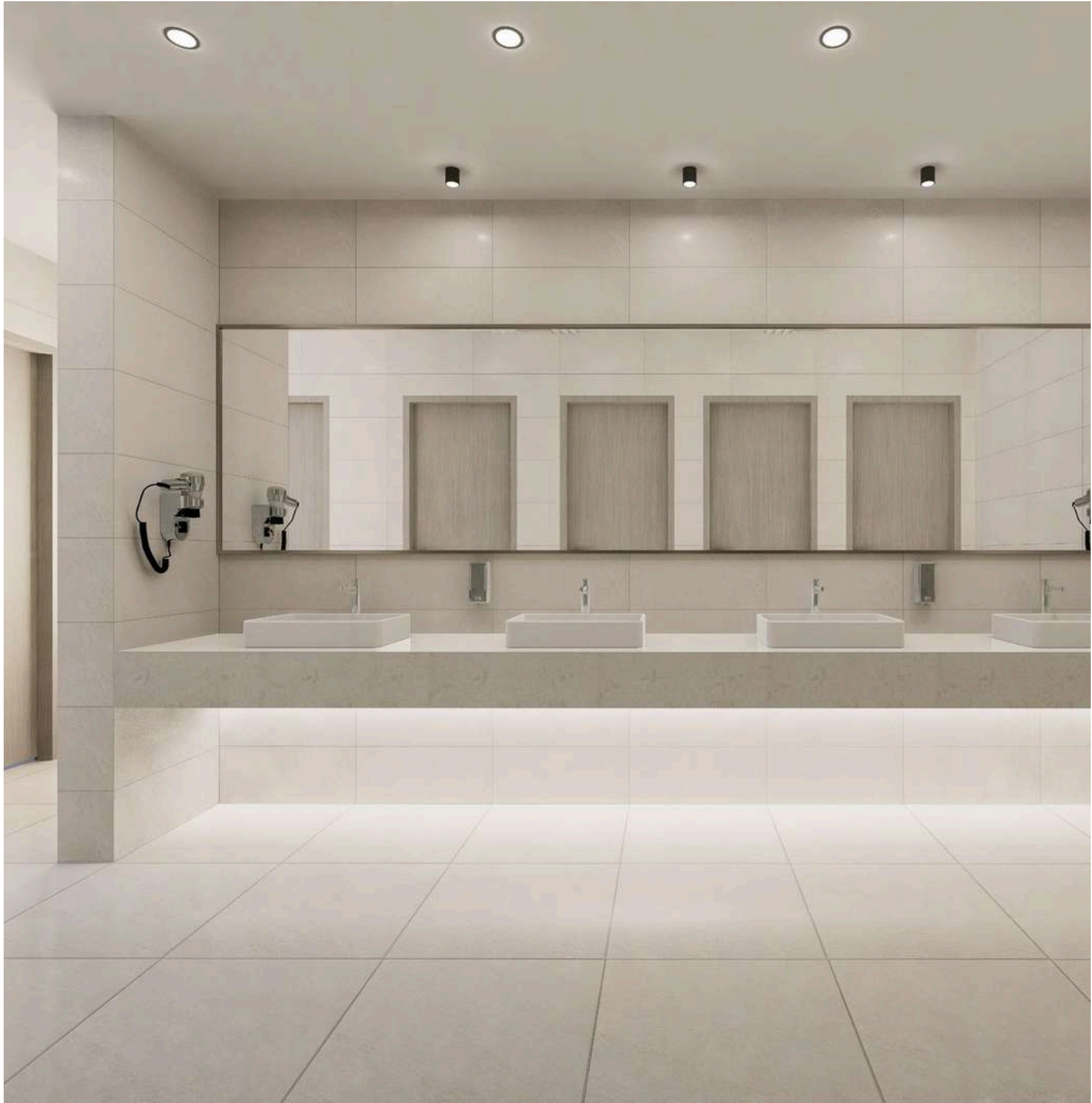


















- 
1. Hamidiya Park - 11 mins
  2. Ajman City Centre - 18 mins
  3. Ajman University - 18 mins
  4. Sheikh Zayed Mosque, Ajman - 20 mins
  5. Al Zorah Natural Reserve - 22 mins
  6. Amina Hospital - 24 mins
  7. Ajman beach - 26 mins
  8. Ajman Heritage District - 26 mins
  9. Ajman Marina - 26 mins
  10. Sharjah International Airport - 27 mins
  11. Dubai International Airport - 27 mins
  12. Dubai Festival City Mall & Imagine Show - 30 mins
  13. Ras Al Khor Dubai - 30 mins

## SKY GARDENS TOWER

# Conveniently Connected

Sky Gardens Tower's prime location on Sheikh Mohammad Bin Zayed Road ensures seamless connectivity:

- Sharjah: 15 Min.
- Dubai: 30 Min.
- Easy access to Sheikh Mohammed Bin Zayed Road and Ajman Corniche
- Steps away from shopping centers, international schools, and healthcare facilities
- Close to leisure destinations like Ajman Marina and Al Zorah Nature Reserve

Live where convenience meets opportunity.



# Amenities Above

Residents of Sky Gardens Tower indulge in a lifestyle of comfort and wellness with premium facilities designed to enhance everyday living.

## On-Site

- State-of-the-art health club
- Resort-style swimming pool
- Landscaped gardens
- Children's play area
- 24/7 security
- Covered parking
- High-speed elevators
- Retail spaces

## Nearby

- Markets and Shopping Centers
- Schools and Universities
- Parks
- Recreation Centers
- Restaurants
- Walking Areas
- Sitting Areas





# Sky Gardens Tower: Facts & Features



**Property Type:** Residential Apartments



**Total Number of Units:** 741



**Unit Mix:** STUDIO, 1BHK AND 2BHK



**Unit Sizes Starting From:** 605.22 SQFT to 2975.25 SQFT



**Completion Date:** Q1 2028



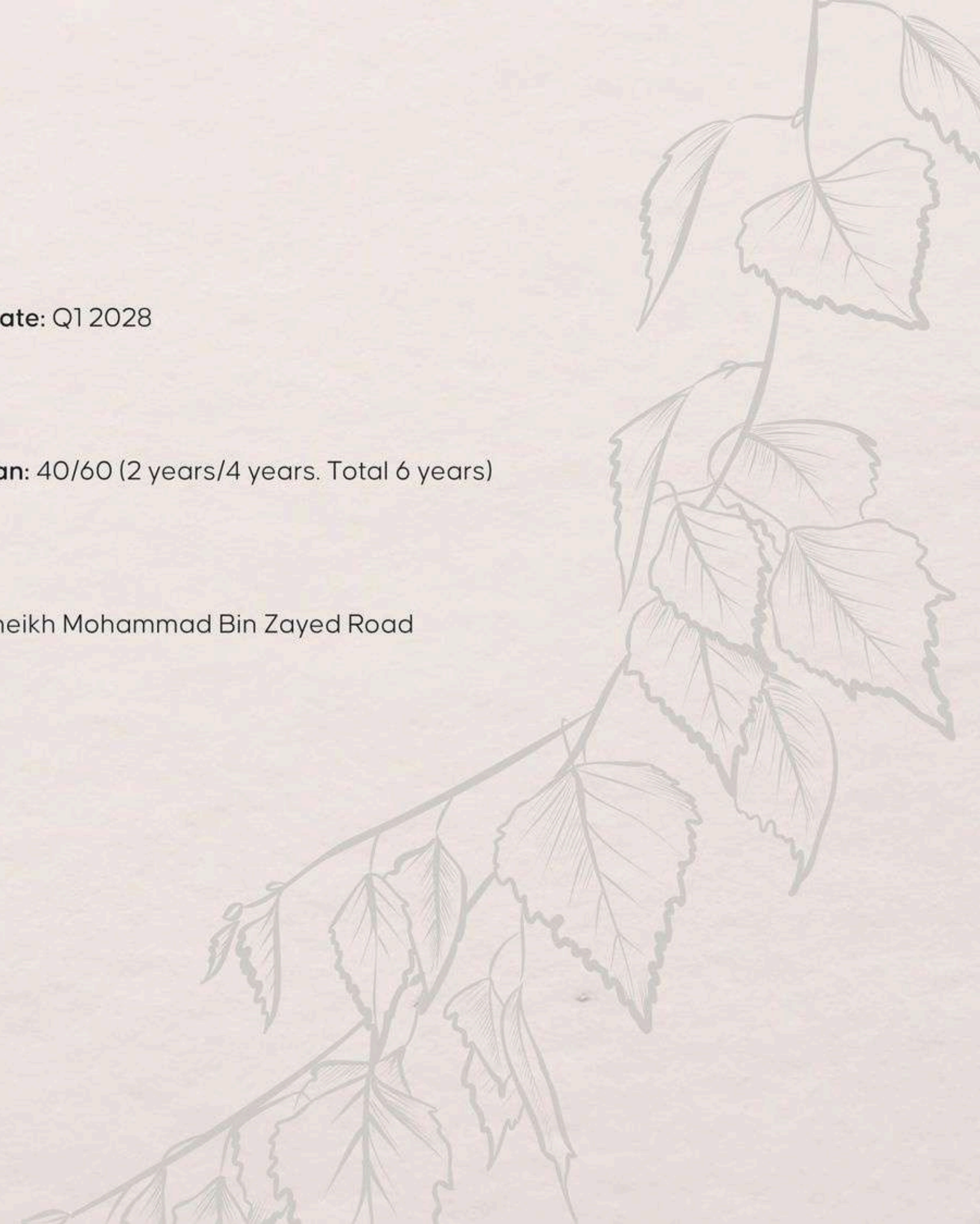
**Handover Date:** Q1 2028



**Payment Plan:** 40/60 (2 years/4 years. Total 6 years)



**Location:** Sheikh Mohammad Bin Zayed Road





# FLOOR PLAN





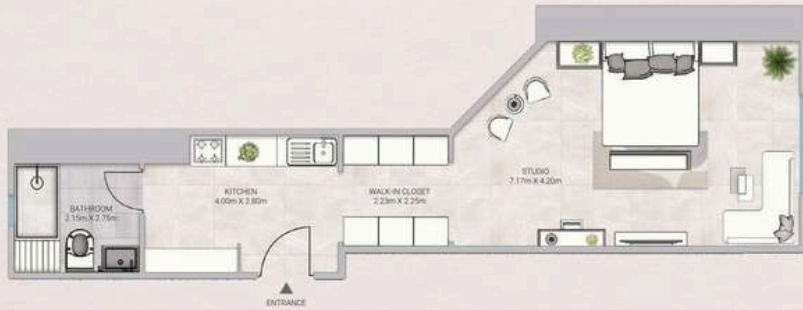
SKY GARDENS  
TOWER



**UNIT G02**  
Studio - Level Ground  
Gross Area: 623.61 SQ.FT  
57.94 SQM.

Disclaimer:  
1. All materials, finishes, dimensions and drawings are approximate. 2. Actual suite area may vary from the stated area. 3. Drawings are not to scale. 4. Information is subject to change without notice.  
5. The Developer reserves the right to make revisions/alterations without any liability whatsoever.

SKY GARDENS  
TOWER



**UNIT G01**  
Studio - Level Ground  
Gross Area: 773.03 SQ.FT  
71.82 SQM.

Disclaimer:  
1. All materials, finishes, dimensions and drawings are approximate. 2. Actual suite area may vary from the stated area. 3. Drawings are not to scale. 4. Information is subject to change without notice.  
5. The Developer reserves the right to make revisions/alterations without any liability whatsoever.



SKY GARDENS  
TOWER



UNIT G03  
1 Bedroom - Level Ground  
Gross Area: 1139.51 SQ.FT  
105.86 SQM.

Disclaimer:  
1. All materials, finishes, dimensions and drawings are approximate. 2. Actual suite area may vary from the stated area. 3. Drawings are not to scale. 4. Information is subject to change without notice.  
5. The Developer reserves the right to make revisions/alterations without any liability whatsoever.

SKY GARDENS  
TOWER



UNIT G04  
Studio - Level Ground  
Gross Area: 707.59 SQ.FT  
65.74 SQM.

Disclaimer:  
1. All materials, finishes, dimensions and drawings are approximate. 2. Actual suite area may vary from the stated area. 3. Drawings are not to scale. 4. Information is subject to change without notice.  
5. The Developer reserves the right to make revisions/alterations without any liability whatsoever.



SKY GARDENS  
TOWER



UNIT G06  
1 Bedroom - Level Ground  
Gross Area: 1083.87 SQ.FT  
100.69 SQM.

Disclaimer:  
1. All materials, finishes, dimensions and drawings are approximate. 2. Actual suite area may vary from the stated area. 3. Drawings are not to scale. 4. Information is subject to change without notice.  
5. The Developer reserves the right to make revisions/alterations without any liability whatsoever.

SKY GARDENS  
TOWER



UNIT G05  
1 Bedroom - Level Ground  
Gross Area: 1131.20 SQ.FT  
105.09 SQM.

Disclaimer:  
1. All materials, finishes, dimensions and drawings are approximate. 2. Actual suite area may vary from the stated area. 3. Drawings are not to scale. 4. Information is subject to change without notice.  
5. The Developer reserves the right to make revisions/alterations without any liability whatsoever.



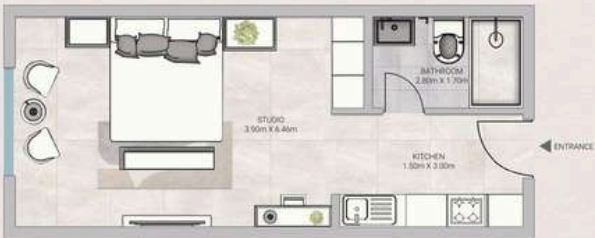
SKY GARDENS  
TOWER



UNIT G07  
Studio - Level Ground  
Gross Area: 605.22 SQ.FT  
56.23 SQM.

Disclaimer:  
1. All materials, finishes, dimensions and drawings are approximate. 2. Actual suite area may vary from the stated area. 3. Drawings are not to scale. 4. Information is subject to change without notice.  
5. The Developer reserves the right to make revisions/alterations without any liability whatsoever.

SKY GARDENS  
TOWER



UNIT G07  
Studio - Level Ground  
Gross Area: 605.22 SQ.FT  
56.23 SQM.

Disclaimer:  
1. All materials, finishes, dimensions and drawings are approximate. 2. Actual suite area may vary from the stated area. 3. Drawings are not to scale. 4. Information is subject to change without notice.  
5. The Developer reserves the right to make revisions/alterations without any liability whatsoever.



SKY GARDENS  
TOWER



**UNIT G08**  
Studio - Level Ground  
Gross Area: 611.45 SQ.FT  
56.81 SQM.

Disclaimer:  
1. All materials, finishes, dimensions and drawings are approximate. 2. Actual suite area may vary from the stated area. 3. Drawings are not to scale. 4. Information is subject to change without notice.  
5. The Developer reserves the right to make revisions/alterations without any liability whatsoever.

SKY GARDENS  
TOWER



**UNIT G09**  
Studio - Level Ground  
Gross Area: 642.31 SQ.FT  
59.67 SQM.

Disclaimer:  
1. All materials, finishes, dimensions and drawings are approximate. 2. Actual suite area may vary from the stated area. 3. Drawings are not to scale. 4. Information is subject to change without notice.  
5. The Developer reserves the right to make revisions/alterations without any liability whatsoever.



SKY GARDENS  
TOWER



UNIT G11  
1 Bedroom - Level Ground  
Gross Area: 1081.79 SQ.FT  
100.50 SQM.

Disclaimer:  
1. All materials, finishes, dimensions and drawings are approximate. 2. Actual suite area may vary from the stated area. 3. Drawings are not to scale. 4. Information is subject to change without notice.  
5. The Developer reserves the right to make revisions/alterations without any liability whatsoever.

SKY GARDENS  
TOWER



UNIT G10  
Studio - Level Ground  
Gross Area: 665.90 SQ.FT  
61.86 SQM.

Disclaimer:  
1. All materials, finishes, dimensions and drawings are approximate. 2. Actual suite area may vary from the stated area. 3. Drawings are not to scale. 4. Information is subject to change without notice.  
5. The Developer reserves the right to make revisions/alterations without any liability whatsoever.



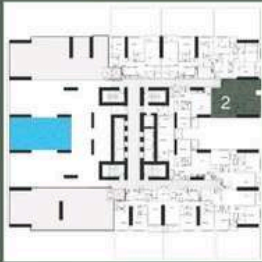




SKY GARDENS  
TOWER



UNIT 102  
2 Bedroom - Level 1  
Gross Area: 1026.55 SQ.FT  
95.36 SQM.

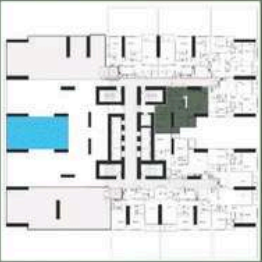


Disclaimer:  
1. All materials, finishes, dimensions and drawings are approximate. 2. Actual suite area may vary from the stated area. 3. Drawings are not to scale. 4. Information is subject to change without notice.  
5. The Developer reserves the right to make revisions/alterations without any liability whatsoever.

SKY GARDENS  
TOWER



UNIT 101  
2 Bedroom - Level 1  
Gross Area: 1076.50 SQ.FT  
100.01 SQM.



Disclaimer:  
1. All materials, finishes, dimensions and drawings are approximate. 2. Actual suite area may vary from the stated area. 3. Drawings are not to scale. 4. Information is subject to change without notice.  
5. The Developer reserves the right to make revisions/alterations without any liability whatsoever.





# SKY GARDENS

TOWER

Unit 103 floor plan details:

- TERRACE: 10.25m x 6.80m
- BEDROOM: 3.90m x 3.60m
- BEDROOM: 4.35m x 3.40m
- BEDROOM: 4.35m x 3.40m
- LIVING & DINING: 4.90m x 3.55m
- KITCHEN: 3.00m x 2.50m
- POWDER ROOM: 1.35m x 2.25m
- STORAGE: 2.00m x 1.20m
- BALCONY: 3.40m x 1.15m

UNIT 103

2 Bedroom - Level 1

Gross Area: 2041.27 SQ.FT  
189.64 SQM.

Disclaimer:

1. All materials, finishes, dimensions and drawings are approximate. 2. Actual suite area may vary from the stated area. 3. Drawings are not to scale. 4. Information is subject to change without notice. 5. The Developer reserves the right to make revisions/alterations without any liability whatsoever.



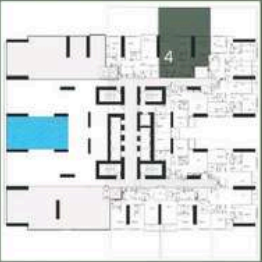
SKY GARDENS  
TOWER



UNIT 105  
2 Bedroom - Level 1  
Gross Area: 2172.59 SQ.FT  
201.84 SQM.

Disclaimer:  
1. All materials, finishes, dimensions and drawings are approximate. 2. Actual suite area may vary from the stated area. 3. Drawings are not to scale. 4. Information is subject to change without notice.  
5. The Developer reserves the right to make revisions/alterations without any liability whatsoever.

SKY GARDENS  
TOWER



UNIT 104  
2 Bedroom - Level 1  
Gross Area: 2138.57 SQ.FT  
198.67 SQM.

Disclaimer:  
1. All materials, finishes, dimensions and drawings are approximate. 2. Actual suite area may vary from the stated area. 3. Drawings are not to scale. 4. Information is subject to change without notice.  
5. The Developer reserves the right to make revisions/alterations without any liability whatsoever.



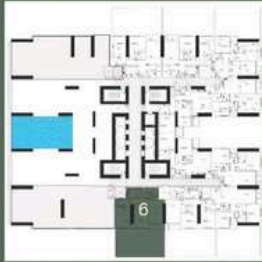
SKY GARDENS  
TOWER



UNIT 107  
2 Bedroom - Level 1  
Gross Area: 2056.23 SQ.FT  
191.03 SQM.

Disclaimer:  
1. All materials, finishes, dimensions and drawings are approximate. 2. Actual suite area may vary from the stated area. 3. Drawings are not to scale. 4. Information is subject to change without notice.  
5. The Developer reserves the right to make revisions/alterations without any liability whatsoever.

SKY GARDENS  
TOWER



UNIT 106  
2 Bedroom - Level 1  
Gross Area: 1989.71 SQ.FT  
184.85 SQM.

Disclaimer:  
1. All materials, finishes, dimensions and drawings are approximate. 2. Actual suite area may vary from the stated area. 3. Drawings are not to scale. 4. Information is subject to change without notice.  
5. The Developer reserves the right to make revisions/alterations without any liability whatsoever.



SKY GARDENS  
TOWER



UNIT 109  
2 Bedroom - Level 1  
Gross Area: 1036.03 SQ.FT  
96.25 SQM.

Disclaimer:  
1. All materials, finishes, dimensions and drawings are approximate. 2. Actual suite area may vary from the stated area. 3. Drawings are not to scale. 4. Information is subject to change without notice.  
5. The Developer reserves the right to make revisions/alterations without any liability whatsoever.

SKY GARDENS  
TOWER



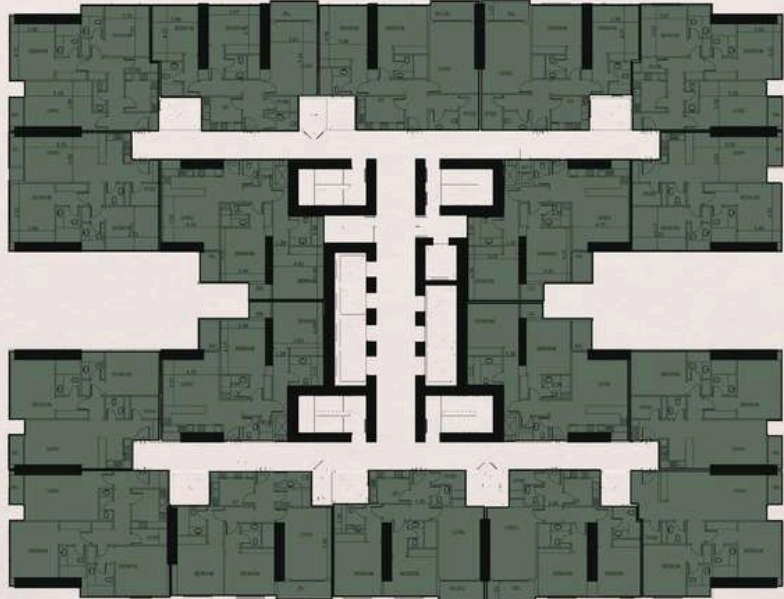
UNIT 107  
2 Bedroom - Level 1  
Gross Area: 1986.26 SQ.FT  
184.52 SQM.

Disclaimer:  
1. All materials, finishes, dimensions and drawings are approximate. 2. Actual suite area may vary from the stated area. 3. Drawings are not to scale. 4. Information is subject to change without notice.  
5. The Developer reserves the right to make revisions/alterations without any liability whatsoever.



Typical Floor Plan - Two Bedrooms

Mohd Bin Zayed Road



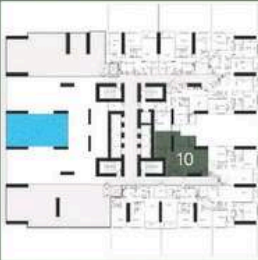
Community View

2 Bedrooms

SKY GARDENS  
TOWER



Disclaimer:  
1. All materials, finishes, dimensions and drawings are approximate. 2. Actual suite area may vary from the stated area. 3. Drawings are not to scale. 4. Information is subject to change without notice.  
5. The Developer reserves the right to make revisions/alterations without any liability whatsoever.



UNIT 110  
2 Bedroom - Level 1  
Gross Area: 1058.52 SQ.FT  
98.33 SQM.



SKY GARDENS  
TOWER



UNIT 02  
2 Bedroom - Level Typical  
Gross Area: 1500.06 SQ.FT  
139.36 SQM.



Disclaimer:  
1. All materials, finishes, dimensions and drawings are approximate. 2. Actual suite area may vary from the stated area. 3. Drawings are not to scale. 4. Information is subject to change without notice.  
5. The Developer reserves the right to make revisions/alterations without any liability whatsoever.

SKY GARDENS  
TOWER



UNIT 01  
2 Bedroom - Level Typical  
Gross Area: 1528.10 SQ.FT  
141.96 SQM.



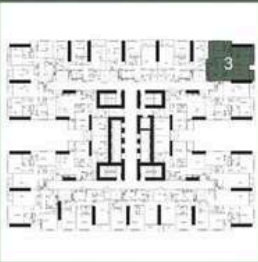
Disclaimer:  
1. All materials, finishes, dimensions and drawings are approximate. 2. Actual suite area may vary from the stated area. 3. Drawings are not to scale. 4. Information is subject to change without notice.  
5. The Developer reserves the right to make revisions/alterations without any liability whatsoever.



SKY GARDENS  
TOWER



UNIT 03  
2 Bedroom - Level Typical  
Gross Area: 1685.82 SQ.FT  
156.62 SQM.



Disclaimer:  
1. All materials, finishes, dimensions and drawings are approximate. 2. Actual suite area may vary from the stated area. 3. Drawings are not to scale. 4. Information is subject to change without notice.  
5. The Developer reserves the right to make revisions/alterations without any liability whatsoever.

SKY GARDENS  
TOWER



UNIT 04  
2 Bedroom - Level Typical  
Gross Area: 1634.04 SQ.FT  
151.81 SQM.



Disclaimer:  
1. All materials, finishes, dimensions and drawings are approximate. 2. Actual suite area may vary from the stated area. 3. Drawings are not to scale. 4. Information is subject to change without notice.  
5. The Developer reserves the right to make revisions/alterations without any liability whatsoever.



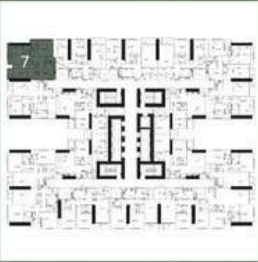




SKY GARDENS  
TOWER



UNIT 07  
2 Bedroom - Level Typical  
Gross Area: 1685.67 SQ.FT  
156.60 SQM.

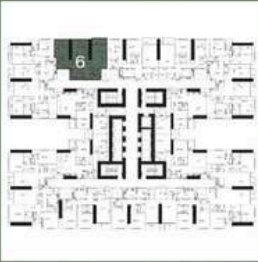


Disclaimer:  
1. All materials, finishes, dimensions and drawings are approximate. 2. Actual suite area may vary from the stated area. 3. Drawings are not to scale. 4. Information is subject to change without notice.  
5. The Developer reserves the right to make revisions/alterations without any liability whatsoever.

SKY GARDENS  
TOWER



UNIT 06  
2 Bedroom - Level Typical  
Gross Area: 1641.46 SQ.FT  
152.50 SQM.



Disclaimer:  
1. All materials, finishes, dimensions and drawings are approximate. 2. Actual suite area may vary from the stated area. 3. Drawings are not to scale. 4. Information is subject to change without notice.  
5. The Developer reserves the right to make revisions/alterations without any liability whatsoever.



SKY GARDENS  
TOWER



UNIT 08  
2 Bedroom - Level Typical  
Gross Area: 1500.65 SQ.FT  
139.41 SQM.

Disclaimer:  
1. All materials, finishes, dimensions and drawings are approximate. 2. Actual suite area may vary from the stated area. 3. Drawings are not to scale. 4. Information is subject to change without notice.  
5. The Developer reserves the right to make revisions/alterations without any liability whatsoever.

SKY GARDENS  
TOWER



UNIT 09  
2 Bedroom - Level Typical  
Gross Area: 1528.25 SQ.FT  
141.98 SQM.

Disclaimer:  
1. All materials, finishes, dimensions and drawings are approximate. 2. Actual suite area may vary from the stated area. 3. Drawings are not to scale. 4. Information is subject to change without notice.  
5. The Developer reserves the right to make revisions/alterations without any liability whatsoever.





SKY GARDENS  
TOWER

Unit 010 Floor Plan Details:

- BALCONY: 2.20m x 1.80m
- BEDROOM: 4.05m x 4.00m
- BEDROOM: 4.70m x 3.85m
- BATHROOM: 2.70m x 2.40m
- BATHROOM: 2.70m x 2.40m
- BALKIN CLOSET: 1.80m x 1.10m
- LIVING & DINING: 4.30m x 3.60m
- KITCHEN: 4.75m x 2.20m
- POWDER ROOM: 2.25m x 1.80m
- ENTRANCE

UNIT 010

2 Bedroom - Level Typical

Gross Area: 1503.91 SQ.FT  
139.72 SQM.

Disclaimer:

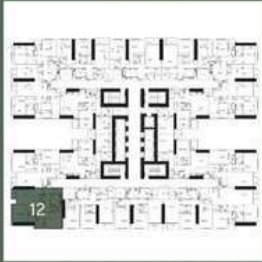
1. All materials, finishes, dimensions and drawings are approximate. 2. Actual suite area may vary from the stated area. 3. Drawings are not to scale. 4. Information is subject to change without notice. 5. The Developer reserves the right to make revisions/alterations without any liability whatsoever.



SKY GARDENS  
TOWER



UNIT 012  
2 Bedroom - Level Typical  
Gross Area: 1853.27 SQ.FT  
172.17 SQM.



Disclaimer:  
1. All materials, finishes, dimensions and drawings are approximate. 2. Actual suite area may vary from the stated area. 3. Drawings are not to scale. 4. Information is subject to change without notice.  
5. The Developer reserves the right to make revisions/alterations without any liability whatsoever.

SKY GARDENS  
TOWER



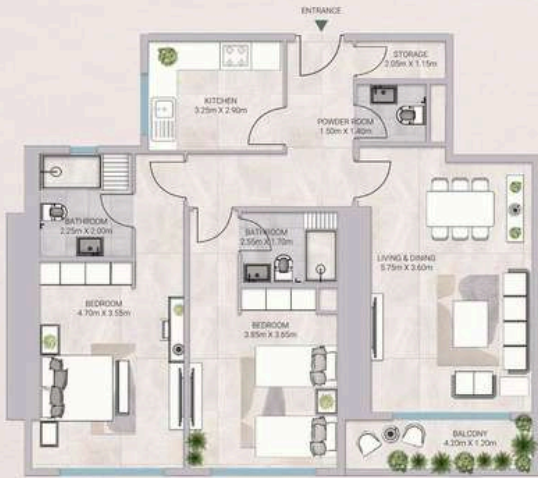
UNIT 011  
2 Bedroom - Level Typical  
Gross Area: 1500.06 SQ.FT  
139.36 SQM.



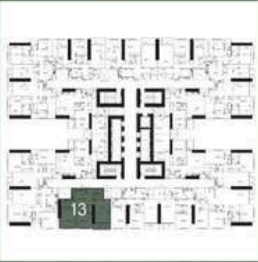
Disclaimer:  
1. All materials, finishes, dimensions and drawings are approximate. 2. Actual suite area may vary from the stated area. 3. Drawings are not to scale. 4. Information is subject to change without notice.  
5. The Developer reserves the right to make revisions/alterations without any liability whatsoever.



SKY GARDENS  
TOWER



UNIT 013  
2 Bedroom - Level Typical  
Gross Area: 1601.84 SQ.FT  
148.82 SQM.

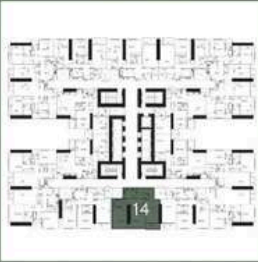


Disclaimer:  
1. All materials, finishes, dimensions and drawings are approximate. 2. Actual suite area may vary from the stated area. 3. Drawings are not to scale. 4. Information is subject to change without notice.  
5. The Developer reserves the right to make revisions/alterations without any liability whatsoever.

SKY GARDENS  
TOWER



UNIT 014  
2 Bedroom - Level Typical  
Gross Area: 1543.53 SQ.FT  
143.40 SQM.



Disclaimer:  
1. All materials, finishes, dimensions and drawings are approximate. 2. Actual suite area may vary from the stated area. 3. Drawings are not to scale. 4. Information is subject to change without notice.  
5. The Developer reserves the right to make revisions/alterations without any liability whatsoever.





SKY GARDENS  
TOWER

UNIT 015

2 Bedroom - Level Typical

Gross Area: 1562.22 SQ.FT  
145.14 SQM.

Disclaimer:

1. All materials, finishes, dimensions and drawings are approximate. 2. Actual suite area may vary from the stated area. 3. Drawings are not to scale. 4. Information is subject to change without notice. 5. The Developer reserves the right to make revisions/alterations without any liability whatsoever.



SKY GARDENS  
TOWER



UNIT 017  
2 Bedroom - Level Typical  
Gross Area: 1513.11 SQ.FT  
140.57 SQM.

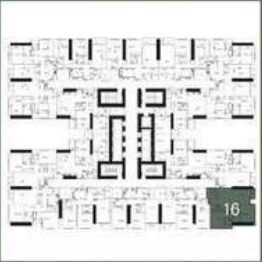


Disclaimer:  
1. All materials, finishes, dimensions and drawings are approximate. 2. Actual suite area may vary from the stated area. 3. Drawings are not to scale. 4. Information is subject to change without notice.  
5. The Developer reserves the right to make revisions/alterations without any liability whatsoever.

SKY GARDENS  
TOWER



UNIT 016  
2 Bedroom - Level Typical  
Gross Area: 1610.05 SQ.FT  
149.58 SQM.



Disclaimer:  
1. All materials, finishes, dimensions and drawings are approximate. 2. Actual suite area may vary from the stated area. 3. Drawings are not to scale. 4. Information is subject to change without notice.  
5. The Developer reserves the right to make revisions/alterations without any liability whatsoever.





SKY GARDENS  
TOWER

UNIT 018

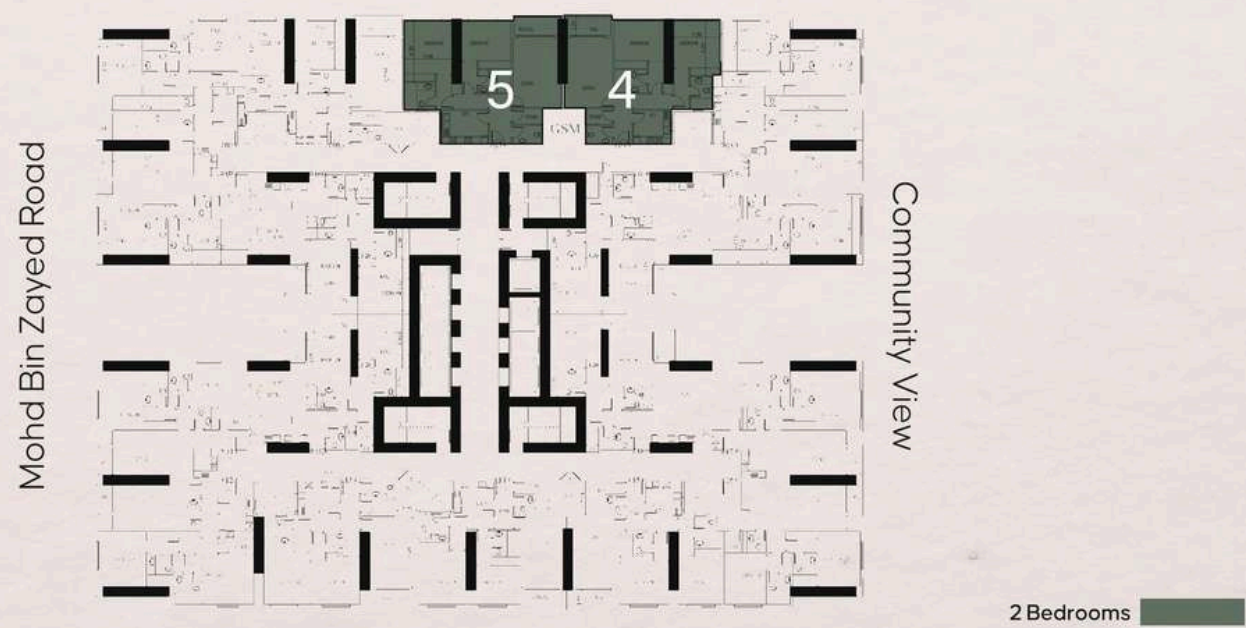
2 Bedroom - Level Typical

Gross Area: 1527.65 SQ.FT  
141.92 SQM.

Disclaimer:  
1. All materials, finishes, dimensions and drawings are approximate. 2. Actual suite area may vary from the stated area. 3. Drawings are not to scale. 4. Information is subject to change without notice.  
5. The Developer reserves the right to make revisions/alterations without any liability whatsoever.



10TH AND 30TH Floor Plan - Two Bedrooms



SKY GARDENS  
TOWER



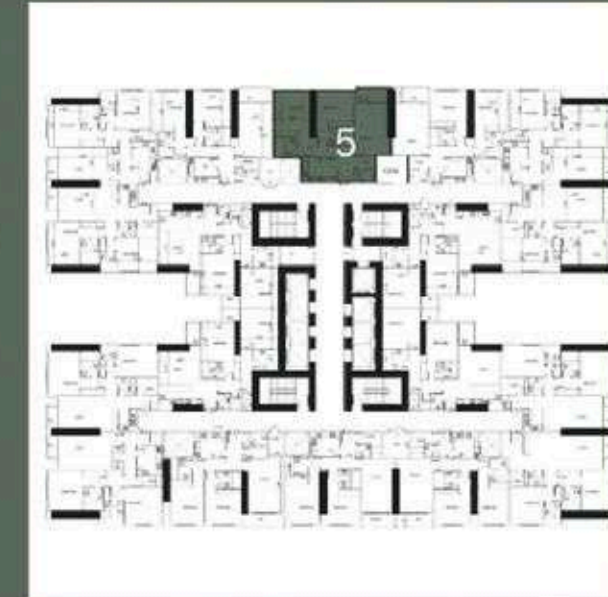
UNIT 04  
2 Bedroom - Level 10th & 30th  
Gross Area: 1548.43 SQ.FT  
143.85 SQM.

Disclaimer:  
1. All materials, finishes, dimensions and drawings are approximate. 2. Actual suite area may vary from the stated area. 3. Drawings are not to scale. 4. Information is subject to change without notice.  
5. The Developer reserves the right to make revisions/alterations without any liability whatsoever.



# SKY GARDENS

TOWER



## UNIT 05

2 Bedroom - Level 10th & 30th

Gross Area: 1631.96 SQ.FT  
151.61 SQM.

### Disclaimer:

1. All materials, finishes, dimensions and drawings are approximate.
2. Actual suite area may vary from the stated area.
3. Drawings are not to scale.
4. Information is subject to change without notice.
5. The Developer reserves the right to make revisions/alterations without any liability whatsoever.





## Where Prestige Meets Property



At Majara Luxury Real Estate L.L.C., we redefine the art of luxury living. Based in the heart of the UAE, we specialize in curating exceptional real estate experiences tailored to the needs of discerning investors, end-users, and global clientele.



With a refined portfolio of premium properties across all seven Emirates, our expertise lies in both off-plan and ready-to-move assets, offering opportunities that blend architectural excellence with investment potential.



We are more than just property consultants & we are partners in your journey to finding the perfect home, investment, or lifestyle. Driven by integrity, market insight, and personalized service, Majara stands as a trusted name in an ever-evolving market.

### Contact Us :

**Phone:** +971564452803

**Email:** [info@majararealestate.com](mailto:info@majararealestate.com)

**<https://majararealestate.com/>**