



## **Ajman's New Residential Icon: One 678 Residence**

# MAJARA LUXURY REAL ESTATE LLC

Head Office Level 36-01, Po Box :124382 , Trade Center 1, Sheikh Zayed Road , Burj Al Salam Tower Dubai UAE

**Majara Unveils One 678 Residence — Ajman's New Address of Luxury**





Ajman perfectly blends tradition and adventure, with stunning beaches for diving, jet skiing, or relaxation. Explore the Ajman Museum, set in an 18th-century fort, or wander the vibrant Al Bustan Souk, a lively market of spices, fabrics, and gold—where history meets modern life.





**A Higher Standard of Living**

One 678 Residence — A Striking Wave on the Ajman Skyline,  
Flooded with Light and Unmatched Views.



# A Welcome That Leaves a Lasting Impression



With plush seating, elegant finishes, and perfect lighting that makes everything glow, the lobby warmly welcomes you, offering a glimpse of the luxurious living experience that awaits.





# Crafted to Inspire Everyday Living

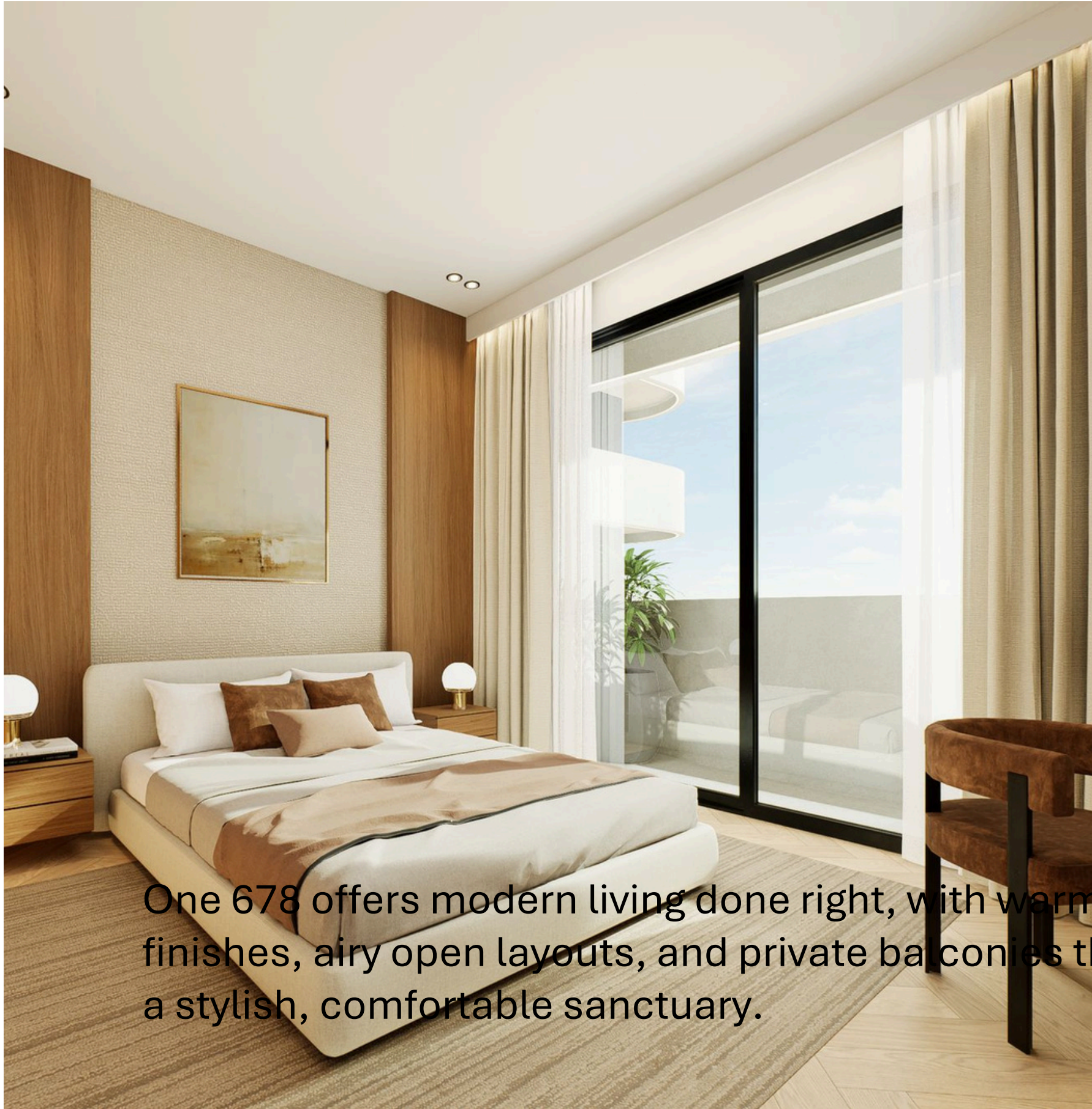


At One 678, living rooms combine sleek, high-end furniture with large sunlit windows, creating a stylish and comfortable space perfect for relaxing or entertaining.





# Designed and Perfected for Your Comfort



One 678 offers modern living done right, with warm, elegant finishes, airy open layouts, and private balconies that create a stylish, comfortable sanctuary.









# Mere moments away.

## Under 10 Minutes

- Al Hamidiya Park
- Ajman Corniche

## 10 - 20 Minutes

- Ajman City Center
- Ajman University
- Ajman Beach
- Al Zorah Natural Reserve

## 20 - 30 Minutes

- Amina Hospital
- Sharjah International Airport
- Dubai International Airport

## 30+ Minutes

- Al Marjan Island, Ras Al Khaimah
- Downtown Dubai





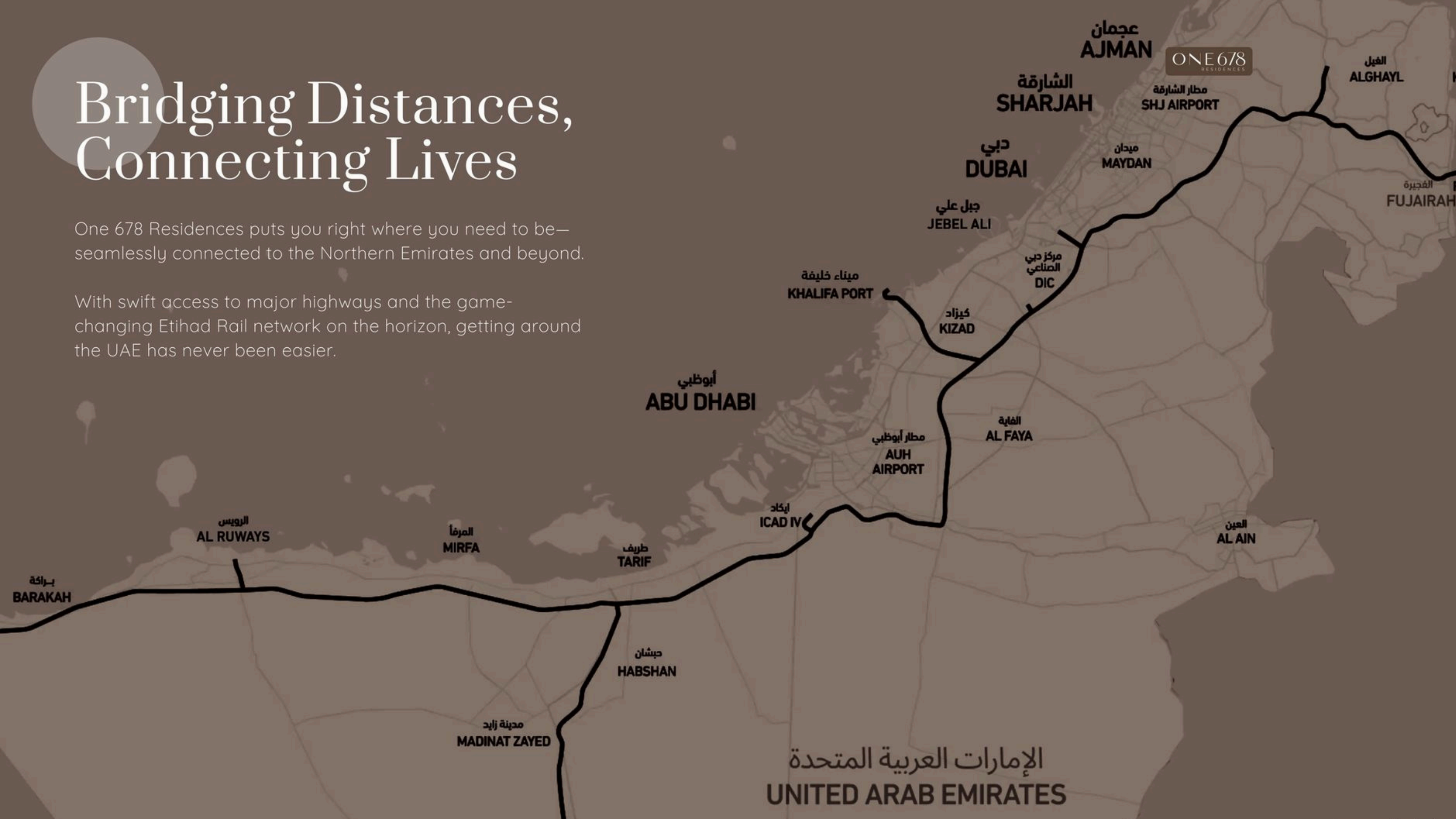




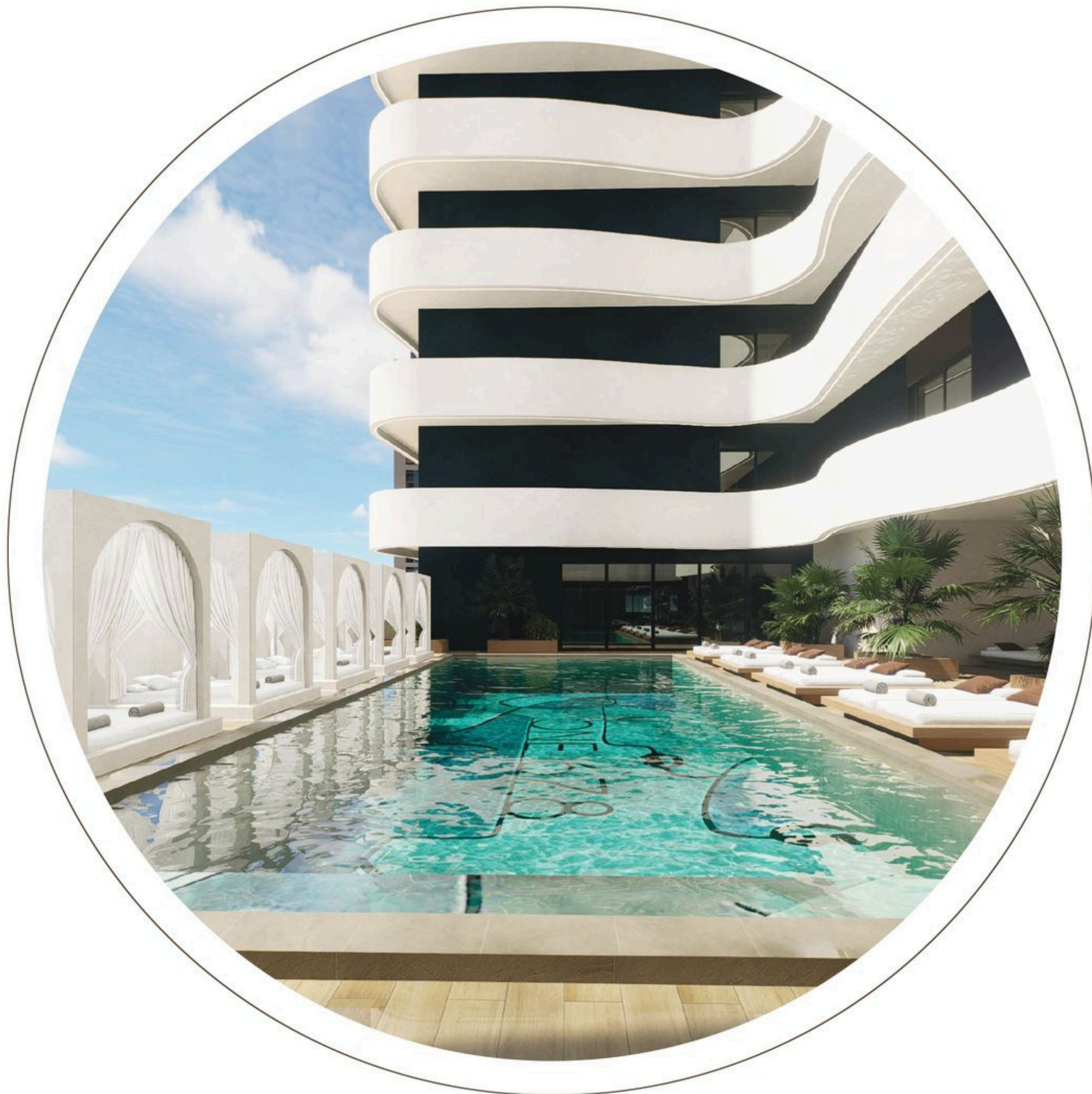
# Bridging Distances, Connecting Lives

One 678 Residences puts you right where you need to be—seamlessly connected to the Northern Emirates and beyond.

With swift access to major highways and the game-changing Etihad Rail network on the horizon, getting around the UAE has never been easier.







The Amenities

# Enhancing every day living.

Experience a lifestyle of comfort and convenience with a range of top-tier amenities designed to enhance your everyday living.

## On-Site

- Fully-Equipped Gym
- Spacious Pool
- Kids' Play Areas
- 24-Hour Security
- Multi-Storey Parking
- Sauna and Steam Room
- Relaxation Zones
- Health Club
- Retail & Restaurants

## Nearby

- Markets and Shopping Centers
- Schools and Universities
- Parks
- Recreation Centers
- Restaurants
- Walking Areas
- Sitting Areas





The Project

# Facts & features.

Project Name

ONE 678 Residences

Total Units

542

Location

Ajman

Payment Plan

40 / 60

4 Years Post Handover

Project Type

Luxury Residences

Unit Types

1, 2, & 3 Bedroom Apartments

Completion

Q1, 2028





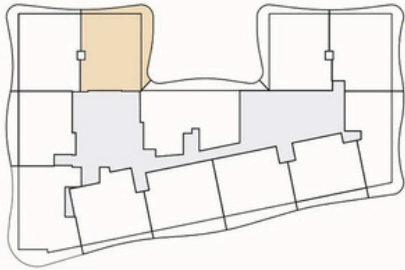
# Floorplans



TYPICAL FLOOR PLAN



SERIES:	01
SIZES:	2 BHK
TOTAL SQ.FT.	2257.18
TOTAL SQM.	209.70

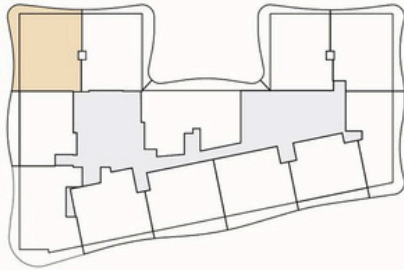


Disclaimer:  
1. All materials, finishes, dimensions and drawings are approximate. 2. Actual suite area may vary from the stated area. 3. Drawings are not to scale.  
4. Information is subject to change without notice. 5. The Developer reserves the right to make revisions/alterations without any liability whatsoever.

TYPICAL FLOOR PLAN



SERIES:	02
SIZES:	2 BHK
TOTAL SQ.FT.	2293.40
TOTAL SQM.	213.06



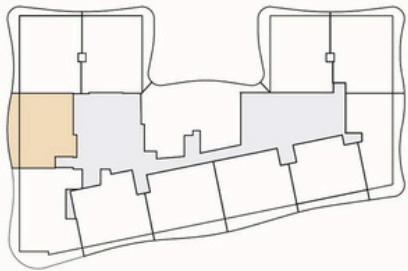
تنويه:  
1- جميع المواد والتشطيبات والأبعاد والرسومات تقريبية.  
2- قد تختلف المساحات الفعلية عن المساحة المذكورة.  
3- يحتفظ المطور بالحق في إجراء التعديلات/التغييرات دون أي مسؤولية من جانبه على الإطلاق.  
4- تخضع المعلومات للتغيير دون إشعار مسبق.



TYPICAL FLOOR PLAN



SERIES:	03
SIZES:	2 BHK
TOTAL SQ.FT.	1730.09
TOTAL SQM.	160.73

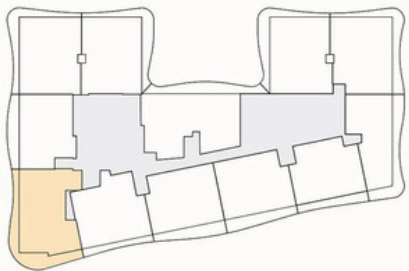


Disclaimer:  
1. All materials, finishes, dimensions and drawings are approximate. 2. Actual suite area may vary from the stated area. 3. Drawings are not to scale.  
4. Information is subject to change without notice. 5. The Developer reserves the right to make revisions/alterations without any liability whatsoever.

TYPICAL FLOOR PLAN



SERIES:	04
SIZES:	2 BHK + STUDY
TOTAL SQ.FT.	2333.56
TOTAL SQM.	216.80



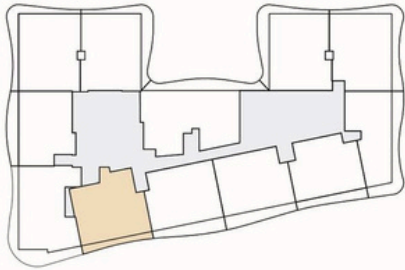
تنويه:  
1- جميع المواد والتشطيبات والأبعاد والرسومات تقريبية.  
2- قد تختلف المساحات الفعلية عن المساحة المذكورة.  
3- الرسومات ليست مطابقة للقياس الواقعي.  
4- تخضع المعلومات للتغيير دون إشعار مسبق.  
5- يحتفظ المطور بالحق في إجراء التعديلات/التغييرات دون أي مسؤولية من جانبه على الإطلاق.



TYPICAL FLOOR PLAN



SERIES:	05
SIZES:	2 BHK
TOTAL SQ.FT.	1808.73
TOTAL SQM.	168.04

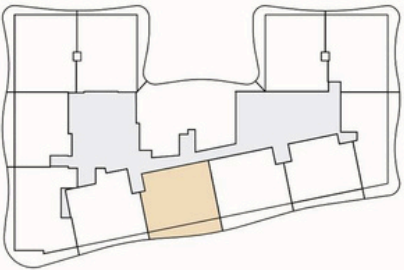


Disclaimer:  
1. All materials, finishes, dimensions and drawings are approximate. 2. Actual suite area may vary from the stated area. 3. Drawings are not to scale.  
4. Information is subject to change without notice. 5. The Developer reserves the right to make revisions/alterations without any liability whatsoever.

TYPICAL FLOOR PLAN



SERIES:	06
SIZES:	2 BHK
TOTAL SQ.FT.	1869.61
TOTAL SQM.	173.69



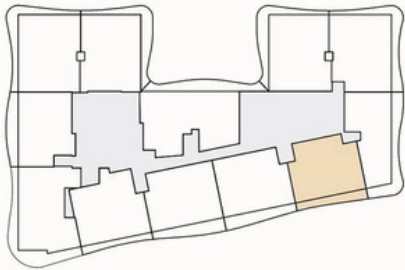
تنويه:  
1- جميع المواد والتشطيبات والأبعاد والرسومات تقريبية.  
2- قد تختلف المساحات الفعلية عن المساحة المذكورة.  
3- يحتفظ المطور بالحق في إجراء التعديلات/التغييرات دون أي مسؤولية من جانبه على الإطلاق.  
4- تخضع المعلومات للتغيير دون إشعار مسبق.



TYPICAL FLOOR PLAN



SERIES:	08
SIZES:	2 BHK
TOTAL SQ.FT.	1705.85
TOTAL SQM.	158.48

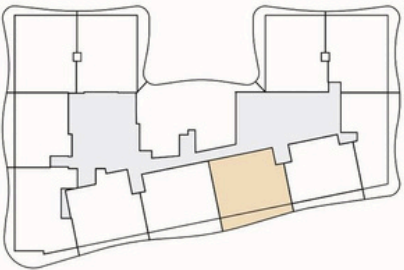


تنويه:  
1- جميع المواد والتنسيطات والأبعاد والرسومات تقريبية.  
2- قد تختلف المساحات الفعلية عن المساحة المذكورة.  
3- الرسومات ليست مطابقة للقياس الواقعي.  
4- تخضع المعلومات للتغيير دون إشعار مسبق.  
5- يحتفظ المطور بالحق في إجراء التعديلات/التغييرات دون أي مسؤولية من جانبه على الإطلاق.

TYPICAL FLOOR PLAN



SERIES:	07
SIZES:	2 BHK
TOTAL SQ.FT.	1851.71
TOTAL SQM.	172.03



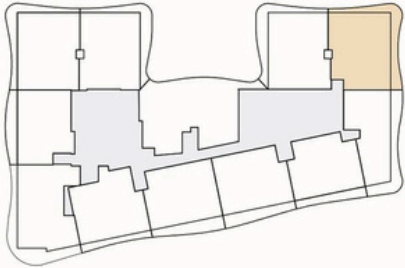
Disclaimer:  
1. All materials, finishes, dimensions and drawings are approximate. 2. Actual suite area may vary from the stated area. 3. Drawings are not to scale.  
4. Information is subject to change without notice. 5. The Developer reserves the right to make revisions/alterations without any liability whatsoever.



TYPICAL FLOOR PLAN



SERIES:	010
SIZES:	2 BHK
TOTAL SQ.FT.	2197.28
TOTAL SQM.	204.13

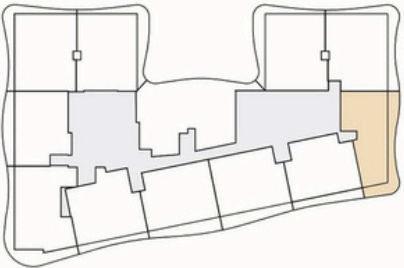


تنويه:  
1- جميع المواد والتنسيقيات والأبعاد والرسومات تقريبية.  
2- قد تختلف المساحات الفعلية عن المساحة المذكورة.  
3- الرسومات ليست مطابقة للقياس الواقعي.  
4- تخضع المعلومات للتغيير دون إنبهار مسبق.  
5- يحتفظ المطور بالحق في إجراء التعديلات/التغييرات دون أي مسؤولية من جانبه على الإطلاق.

TYPICAL FLOOR PLAN



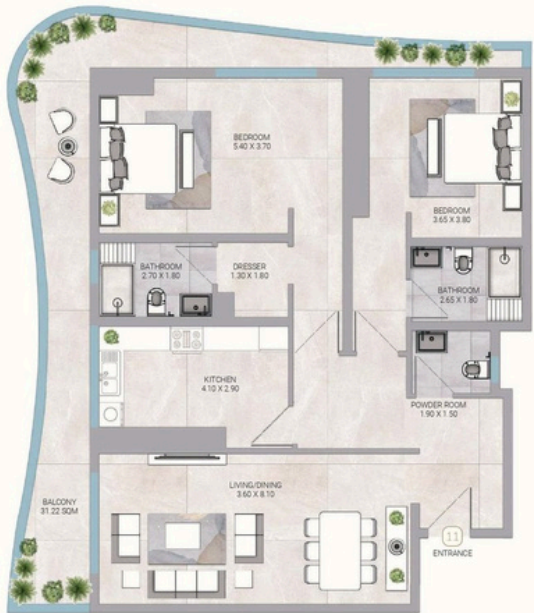
SERIES:	09
SIZES:	2 BHK
TOTAL SQ.FT.	1803.09
TOTAL SQM.	167.51



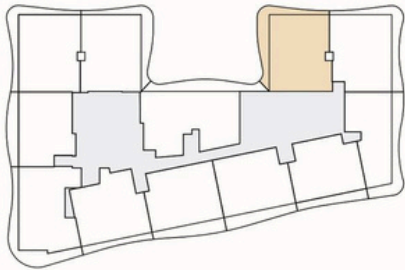
Disclaimer:  
1. All materials, finishes, dimensions and drawings are approximate. 2. Actual suite area may vary from the stated area. 3. Drawings are not to scale.  
4. Information is subject to change without notice. 5. The Developer reserves the right to make revisions/alterations without any liability whatsoever.



TYPICAL FLOOR PLAN



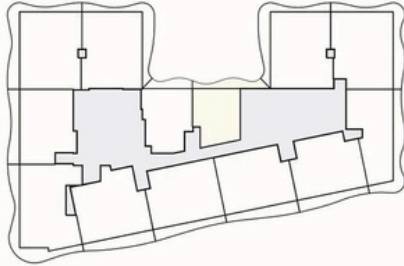
SERIES:	011
SIZES:	2 BHK
TOTAL SQ.FT.	2228.00
TOTAL SQM.	206.99



TYPICAL FLOOR PLAN



SERIES:	012
SIZES:	1 BHK
TOTAL SQ.FT.	1218.64
TOTAL SQM.	113.22



Disclaimer:  
1. All materials, finishes, dimensions and drawings are approximate. 2. Actual suite area may vary from the stated area. 3. Drawings are not to scale.  
4. Information is subject to change without notice. 5. The Developer reserves the right to make revisions/alterations without any liability whatsoever.

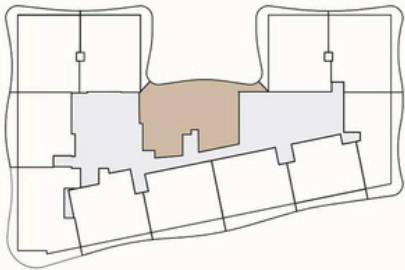
تنويه:  
1- جميع المواد والتشطيبات والأبعاد والرسومات تقريبية.  
2- قد تختلف المساحات الفعلية عن المساحة المذكورة.  
3- الرسومات ليست مطابقة للقياس الواقع.  
4- تخضع المعلومات للتغيير دون إشعار مسبق.  
5- يحتفظ المطور بالحق في إجراء التعديلات/التغييرات دون أي مسؤولية من جانبه على الإطلاق.



TYPICAL FLOOR PLAN



SERIES:	012
SIZES:	3 BHK
TOTAL SQ.FT.	2385.71
TOTAL SQM.	221.64

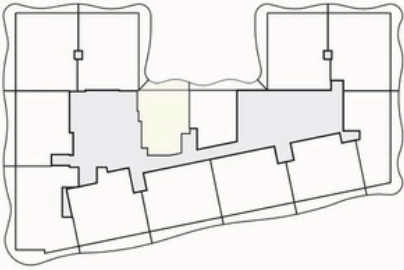


Disclaimer:  
1. All materials, finishes, dimensions and drawings are approximate. 2. Actual suite area may vary from the stated area. 3. Drawings are not to scale.  
4. Information is subject to change without notice. 5. The Developer reserves the right to make revisions/alterations without any liability whatsoever.

TYPICAL FLOOR PLAN



SERIES:	013
SIZES:	1 BHK
TOTAL SQ.FT.	1246.69
TOTAL SQM.	115.82



Disclaimer:  
1. All materials, finishes, dimensions and drawings are approximate. 2. Actual suite area may vary from the stated area. 3. Drawings are not to scale.  
4. Information is subject to change without notice. 5. The Developer reserves the right to make revisions/alterations without any liability whatsoever.





## Where Prestige Meets Property



At Majara Luxury Real Estate L.L.C., we redefine the art of luxury living. Based in the heart of the UAE, we specialize in curating exceptional real estate experiences tailored to the needs of discerning investors, end-users, and global clientele.



With a refined portfolio of premium properties across all seven Emirates, our expertise lies in both off-plan and ready-to-move assets, offering opportunities that blend architectural excellence with investment potential.



We are more than just property consultants & we are partners in your journey to finding the perfect home, investment, or lifestyle. Driven by integrity, market insight, and personalized service, Majara stands as a trusted name in an ever-evolving market.

### Contact Us :

**Phone: +971564452803**

**Email: [info@majararealestate.com](mailto:info@majararealestate.com)**

**<https://majararealestate.com/>**