

HARTLAND II

MAJARA LUXURY REAL ESTATE LLC

Head Office Level 36-01, Po Box :124382 , Trade Center 1, Sheikh Zayed Road , Burj Al Salam Tower Dubai UAE



Majara proudly presents Hartland II, an exclusive sanctuary in the heart of Dubai.



INTRODUCING HARTLAND II

Home, perfected at Hartland.

Hartland II embodies enduring success — a prestigious waterfront destination extending across 8 million square feet, adjacent to Hartland.



An aerial view of a modern, irregularly shaped swimming pool with a light blue mosaic tile interior. The pool is surrounded by a wooden deck with numerous white lounge chairs. To the left, there are modern glass-enclosed cabanas. In the foreground, there is a grey modular sofa and a small table on the deck. A single palm tree stands near the pool's edge, and dense tropical foliage is in the lower right corner. Several people are seen swimming and relaxing around the pool.

Where the rhythm of nature meets the calm of the coast.

Hartland II redefines waterfront living with an exquisite harmony of luxury and sustainability. Surrounded by blue lagoons, beachfronts, and vibrant city energy, it offers a serene escape where nature and sophistication coexist. Here, every moment invites connection, reflection, and the art of living beautifully by the water's edge.











An exclusive retreat crafted for you — your window to infinite possibilities.



Hartland II celebrates nature's vibrant splendor, offering a private gated community framed by lush greenery and sparkling beachfronts. Elevated living spaces harmoniously blend with the natural surroundings, creating a sanctuary where panoramic views of blue waters and verdant landscapes awaken the senses. From the gentle rustle of leaves to the soothing waves along the shore, every moment invites you to reconnect with nature and experience living at its finest.

An aerial view of the Hartland II residential complex. The image shows a large, modern building with a curved facade and multiple levels of balconies. In the foreground, there is a swimming pool with a curved edge, surrounded by lush green landscaping and trees. Several tennis courts are visible in the middle ground, and a large, open green space with more trees is in the background. The overall scene is bright and sunny, with a clear blue sky.

Experience unparalleled living in a home that caters to every wish

Hartland II offers a stunning waterside residential sanctuary in the heart of the city, where contemporary design meets sustainable living. Spanning 8 million square feet, the community is enriched with lush green spaces, gardens, and thoughtfully crafted amenities, creating an environment of privacy, elegance, and convenience. Every detail, from opulent materials to intricate finishes, is designed to transform daily living into an artful experience of sophistication and bliss.

A private gated villa community featuring three distinct clusters of exclusively designed mansions and 5- to 6-bedroom villas, each offering three enclosed car parking spaces, three floors of refined living, a rooftop terrace, and a spacious entrance courtyard. Experience the seamless harmony of nature and home within a verdant community, surrounded by lush greenery, serene lagoons, and a tranquil forest-like sanctuary. Every residence is crafted to offer privacy, luxury, and a connection to the natural beauty that envelops it.







RIVERSIDE CRESCENT

Riverside Crescent – a striking crescent-shaped apartment cluster where waterfront elegance meets lush greenery. Enjoy panoramic views of water, verdant landscapes, and the skyline, crafted for a lifestyle of unparalleled luxury and serenity.



A harmonious blend of luxury and comfort that awakens the soul



Life at Hartland II embodies a profound sense of connection within a close-knit community, where superior-quality homes are crafted for the discerning eye. Create cherished memories as you embrace the lifestyle you have always dreamed of, surrounded by thoughtful design and elevated living. Here, amenities go beyond convenience — each is thoughtfully designed to cater to your every need, nurturing a holistic and enriching living experience.






RAS AL KHOR
WILDLIFE SANCTUARY
05 MINUTES


MEYDAN
RACE COURSE
10 MINUTES


SOBHA HARTLAND &
2 INTERNATIONAL SCHOOLS
10 MINUTES


DUBAI INTERNATIONAL
AIRPORT
12 MINUTES


BUSINESS BAY
12 MINUTES


THE DUBAI MALL
15 MINUTES

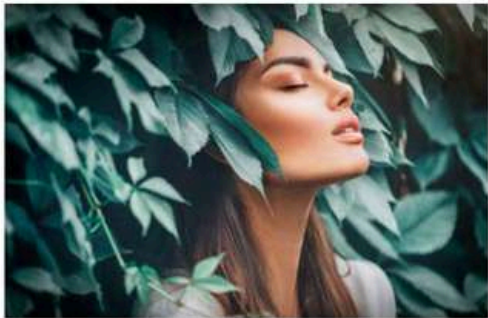

BURJ KHALIFA &
DOWNTOWN DUBAI
15 MINUTES


DUBAI FRAME
15 MINUTES


DUBAI OPERA
15 MINUTES


PALM JUMEIRAH
25 MINUTES

AMENITIES



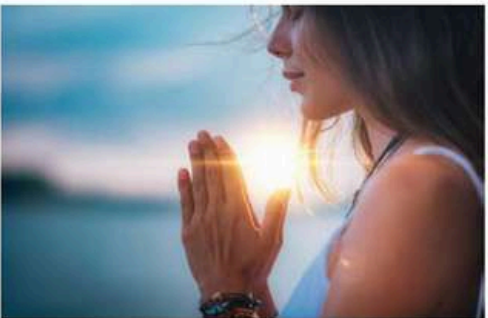
MIND

- Outdoor workstations
- Co-working Spaces
- Gardening zone
- Central Square/ Plaza
- Boulevard with FnB
- Reading Room
- Library
- Observation deck / Bird watching
- Meditation Lounge
- Cards room, Chess, and Carrom
- Garden



BODY

- Water fountain
- Splash pad/Spray Park
- Submerged seating...in the pool
- Sun Loungers
- Day Bed / Cabana
- Cycle path walkway
- Spa and massage rooms
- Circuit Training
- Battle ropes + Jumping Blocks
- Sauna, Steam
- Indoor & Outdoor Gym
- Aerobic zone
- Walking / Jogging track



SOUL

- Lotus Pond
- Sensory Garden
- Zen garden
- Yoga Zone
- Water Bodies
- Beach Edge



COMMUNITY

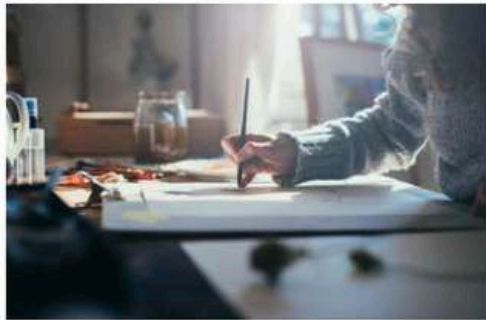
- Multi-purpose Space- Market, food truck, kiosk, water feature
- 40-seater Indoor Movie Theatre
- Open Air Theatre, Amphitheatre
- Theatre Plaza
- Party Terrace
- Putting Garden
- Barbeque Area
- Lawn with organic seating furniture
- Majlis (Tensile gazebos)
- Sun Deck

AMENITIES



CONVENIENCE

- Supermarket
- ATM
- Retail
- Vending machines
- Outdoor workstations
- Co-working Spaces



CREATIVITY

- Music Room
- Art Room



PLAY

- Pool table / Billiards/ Snooker
- Table tennis
- Pickball / Paddle Tennis
- Foosball
- Rock Climbing
- Outdoor chess
- Obstacle course
- Disc hockey
- Golf Simulators
- Multi-purpose sports court
- Squash court
- Volleyball
- Indoor video game room
- VR Room
- Skate Park



PETS

- Pet Park
- Pet washing station
- Pet Salon
- Pet concierge services
- Pet obstruction course



Where Prestige Meets Property



At Majara Luxury Real Estate L.L.C., we redefine the art of luxury living. Based in the heart of the UAE, we specialize in curating exceptional real estate experiences tailored to the needs of discerning investors, end-users, and global clientele.



With a refined portfolio of premium properties across all seven Emirates, our expertise lies in both off-plan and ready-to-move assets, offering opportunities that blend architectural excellence with investment potential.



We are more than just property consultants & we are partners in your journey to finding the perfect home, investment, or lifestyle. Driven by integrity, market insight, and personalized service, Majara stands as a trusted name in an ever-evolving market.

Contact Us :

Phone: +971564452803

Email: info@majararealestate.com

<https://majararealestate.com/>