



MAJARA  
LUXURY REAL ESTATE L.L.C



# Blue Pearls



AN AJMAL MAKAN DEVELOPMENT

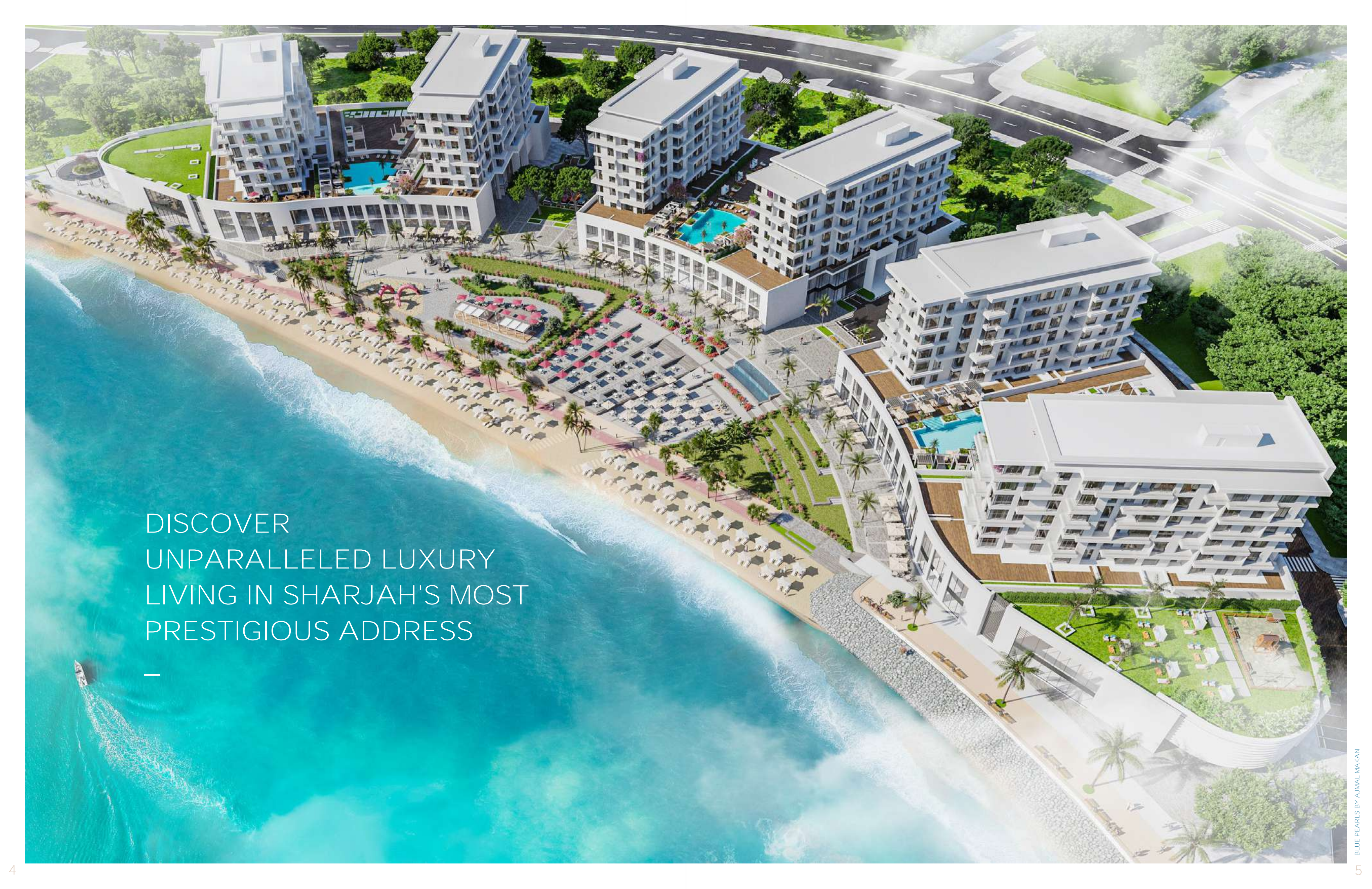


## LIVE IN THE PINNACLE OF ELEGANCE

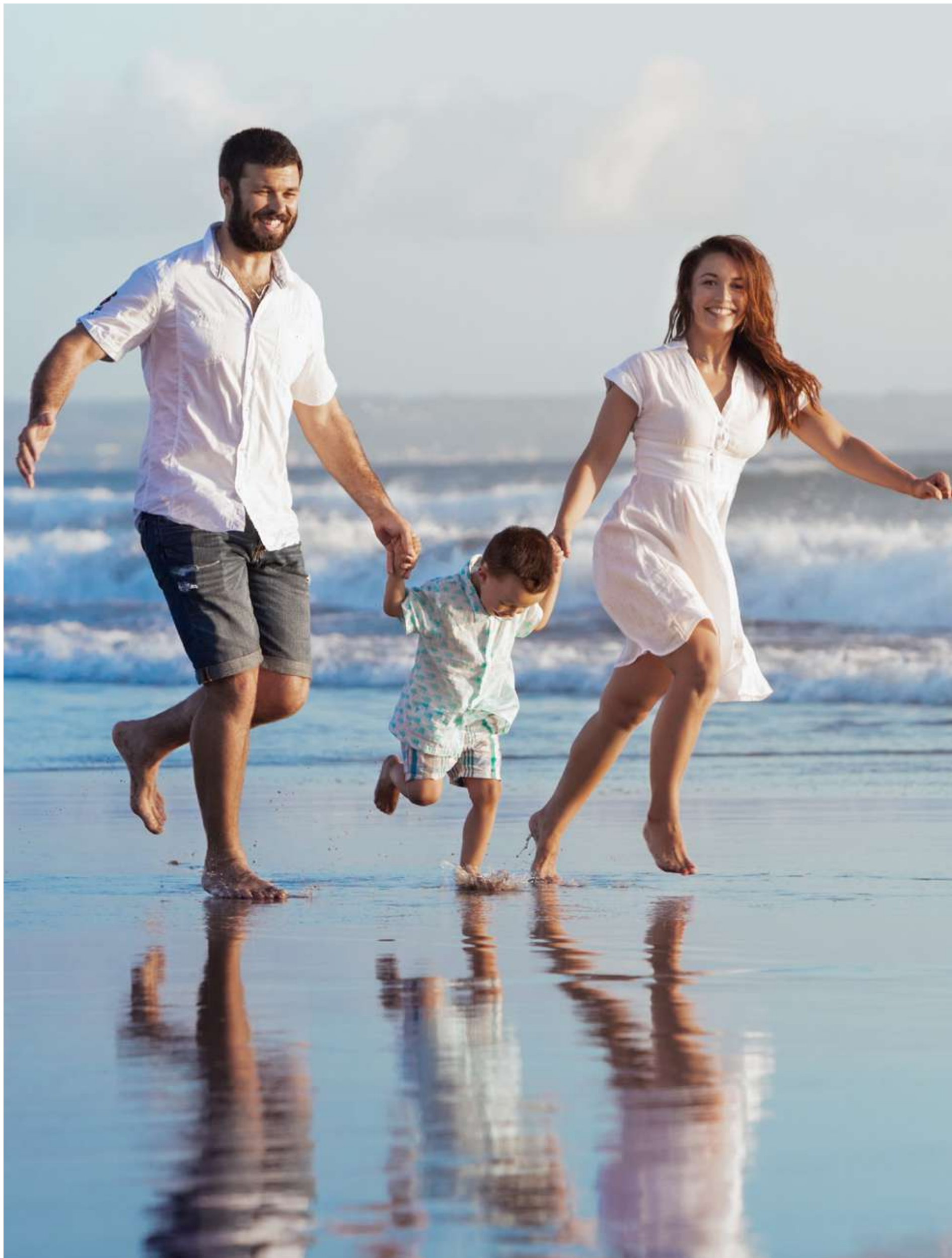
—

Blue Pearls isn't just a residence; it's an experience. Here, every morning greets you with the symphony of waves, and every space whispers the secrets of the ocean's depths. Our prestigious waterfront development is meticulously designed for those who seek the essence of luxury living by the sea.





DISCOVER  
UNPARALLELED LUXURY  
LIVING IN SHARJAH'S MOST  
PRESTIGIOUS ADDRESS



## A HARMONY OF EXCLUSIVITY

---

Blue Pearls offers an idyllic setting that perfectly aligns with the aspirations of discerning investors. Our commitment to creating a living experience that is both luxurious and tranquil ensures every moment is steeped in satisfaction and sophistication.





## THE ESSENCE OF COASTAL OPULENCE

---

At Blue Pearls, experience the pinnacle of luxury living where the horizon meets the refined elegance of Sharjah.

Our residences feature high-end finishes and modern comforts, meticulously designed to elevate your daily life to an enduring retreat of serenity.



## SERENADE OF THE SEA

Blue Pearls is a testament to tranquil living. Each apartment is a haven of peace, designed to offer residents a serene escape.

This exclusive beachfront development stands as an oasis of calm in a bustling world, yet is easily accessible and convenient.



## COCOON OF SPLENDOR

—

Experience the zen comfort at Blue Pearls. Each residence is a masterpiece of design, offering a living space that is as luxurious as it is cozy, ensuring every moment at home is a cherished one.



## UNIT SIZES

Blue Pearls offers a diverse range of unit sizes, including studio, one-bedroom, and two-bedroom apartments, ensuring there's a space that meets resident's living needs

### STUDIO AREAS

412 Sq.ft to 976 Sq.ft

### 1BR AREAS

943 Sq.ft to 1,771 Sq.ft

### 2BR AREAS

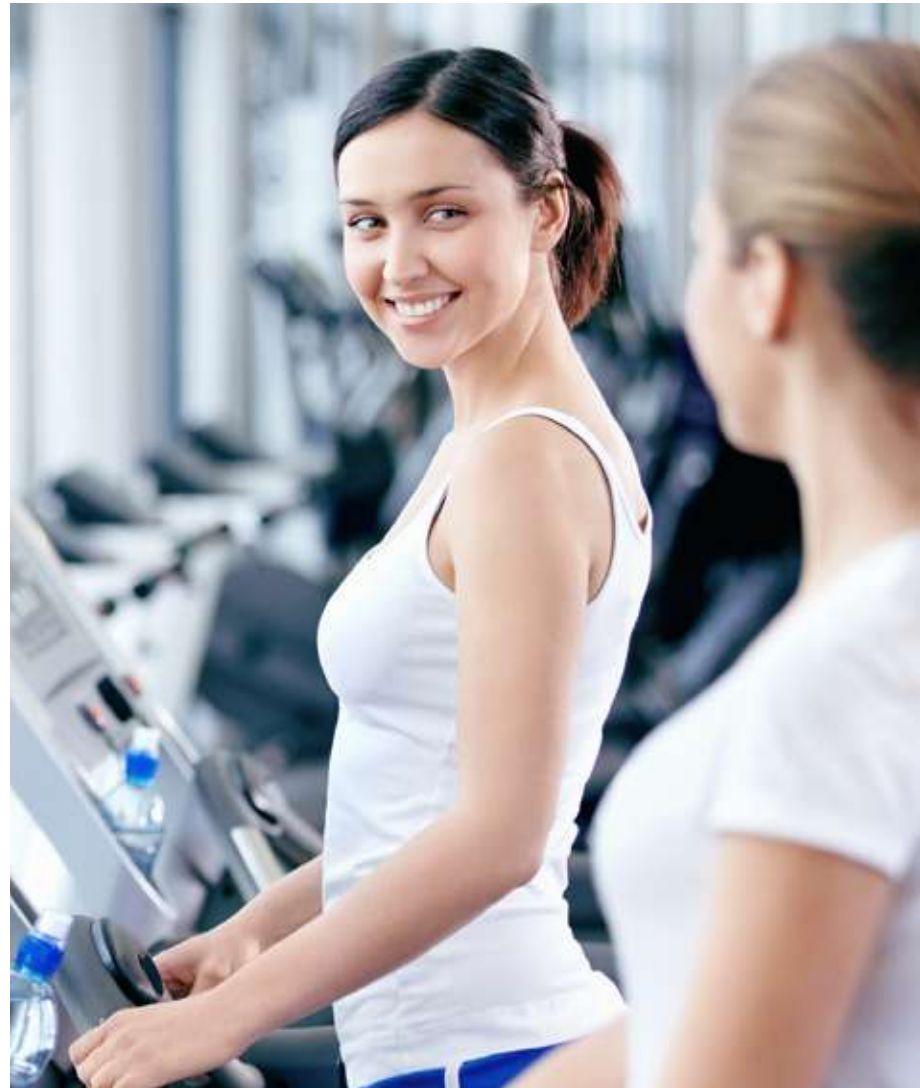
1,407 Sq.ft to 3,832 Sq.ft



## COMMUNITY AND HARMONY

Blue Pearls celebrates the spirit of community. Our communal spaces are designed to nurture connections and foster a warm sense of togetherness, making every encounter a cherished interaction.





## REVITALIZE YOUR SENSES AT THE HEALTH CLUB

Blue Pearls embraces a lifestyle that prioritizes wellness. Our health club is a sanctuary for rejuvenation, equipped with state-of-the-art facilities, ready to cater to your every fitness need.



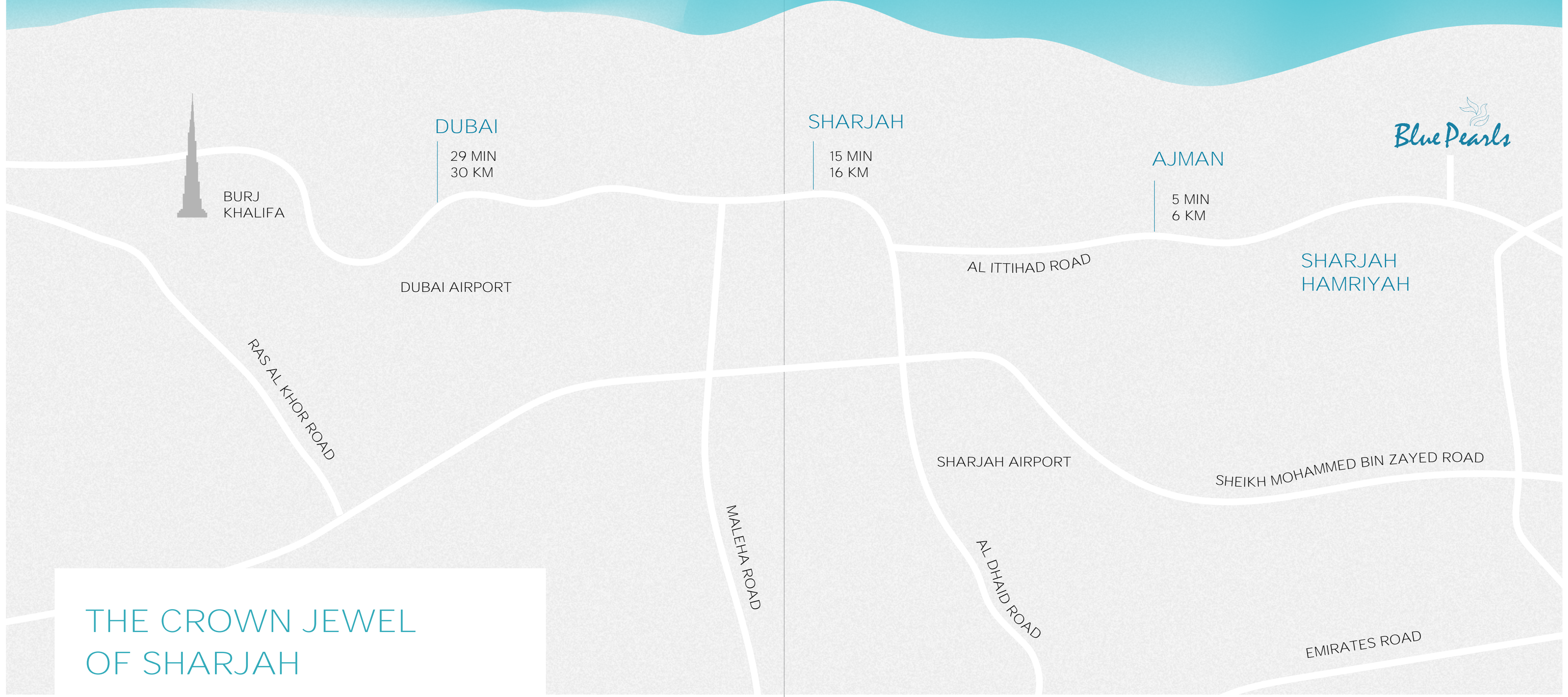
## WELCOME TO THE GRAND LOBBY

Step into the grandeur of Blue Pearls' lobby, a space that exudes elegance and comfort. This welcoming area sets the stage for the luxurious experience that awaits within this illustrious community.



## DIVE INTO LUXURY AT THE SWIMMING POOL

Our pristine swimming area is the jewel of Blue Pearls, a luxurious retreat designed for relaxation and rejuvenation in mind, set against the backdrop of Sharjah's radiant skies.



DUBAI

29 MIN  
30 KM



BURJ KHALIFA

DUBAI AIRPORT

RAS AL KHOR ROAD

SHARJAH

15 MIN  
16 KM

AL ITTIHAD ROAD

SHARJAH AIRPORT

MALEHA ROAD

AL DHAID ROAD

AJMAN

5 MIN  
6 KM



SHARJAH HAMRIYAH

SHEIKH MOHAMMED BIN ZAYED ROAD

EMIRATES ROAD

## THE CROWN JEWEL OF SHARJAH

Nestled in the heart of Sharjah - Al Hamriyah, Blue Pearls stands as a beacon of luxury amidst the city's finest offerings. With rapid access to the urban landscape, this address is a testament to convenience encased in elegance.

### MAIN CITIES

- 5 Min** Ajman
- 8 Min** Sharjah
- 30 Min** Dubai
- 35 Min** RAK

### ACCESS MAIN ROADS

- 1 Min** Al Ittihad Rd
- 8 Min** Mohammed Bin Zayed Rd
- 12 Min** Emirates Rd



## THE ALLURE OF SHARJAH - WHY INVEST?

---

Sharjah's dynamic economy presents a host of investment opportunities. With a strategic location and a thriving business ecosystem, the city promises a stable and prosperous future.

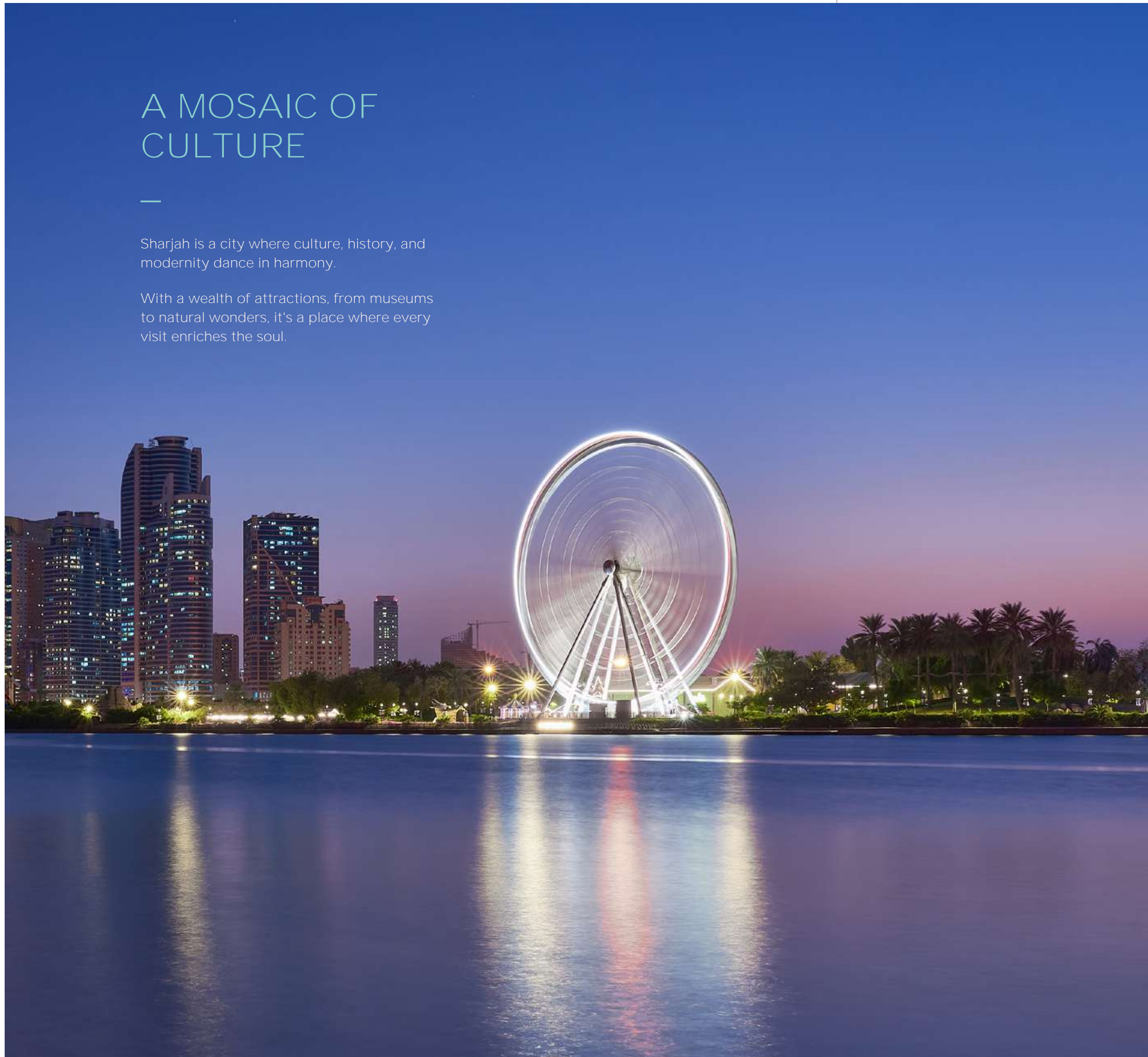
The Sharjah government actively supports real estate investment with various incentives, including flexible payment plans, competitive pricing, no property taxes and low transfer fees

# A MOSAIC OF CULTURE

---

Sharjah is a city where culture, history, and modernity dance in harmony.

With a wealth of attractions, from museums to natural wonders, it's a place where every visit enriches the soul.



# SHARJAH ATTRACTIONS

---

AL MAJAZ WATERFRONT

SHARJAH MUSEUM OF ISLAMIC CIVILIZATION

AL NOOR MOSQUE

SHARJAH AQUARIUM

AL NOOR ISLAND

SHARJAH SCIENCE MUSEUM

SHARJAH NATIONAL PARK

BLUE SOUK SHOPPING CENTRE

SHARJAH DISCOVERY CENTRE

SHARJAH ARCHAEOLOGY MUSEUM

SOUQ AL JUBAIL MARKET

AL KHAN BEACH

AL MONTAZAH PARKS - WATER PARK

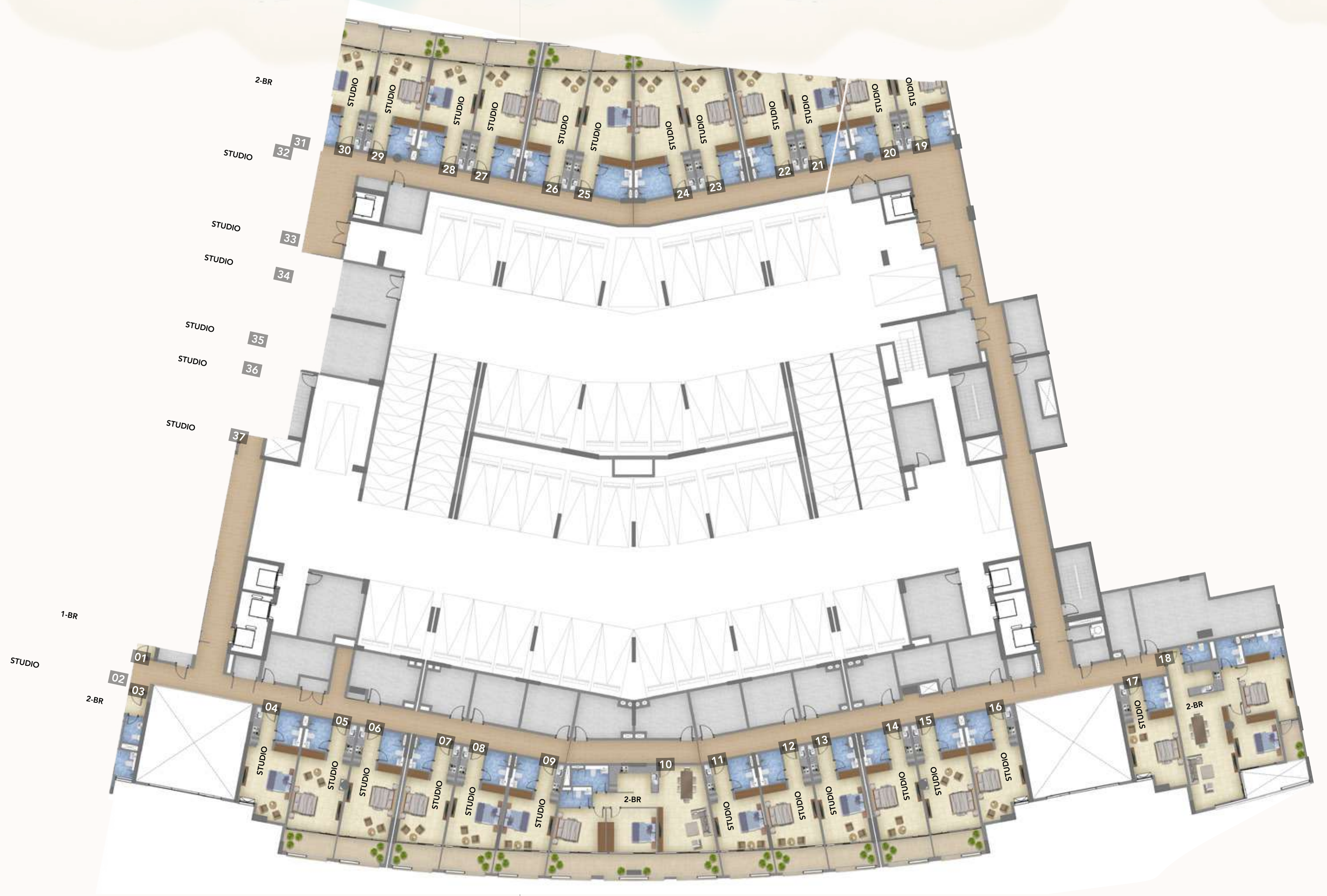
SHARJAH HERITAGE MUSEUM

SHARJAH CLASSIC CARS MUSEUM

NESTLED IN THE HEART  
OF A VIBRANT CITYSCAPE,  
BLUE PEARLS STANDS AS  
A BEACON OF LUXURY  
LIVING.

---





LEVEL PODIUM

STUDIO	38
1 BEDROOM	2
2 BEDROOM	5
UNITS	45

All photos, layouts, information and details in this materials are indicative only and may change at any time up to the final 'as built' status in accordance with regulatory approvals, planning permissions and final designs of the project.

1 FLOOR

STUDIO	9
1 BEDROOM	6
2 BEDROOM	2
UNITS	17



All photos, layouts, information and details in this materials are indicative only and may change at any time up to the final 'as built' status in accordance with regulatory approvals, planning permissions and final designs of the project.

2 / 4 / 5 FLOOR

STUDIO	8
1 BEDROOM	7
2 BEDROOM	2
UNITS	17



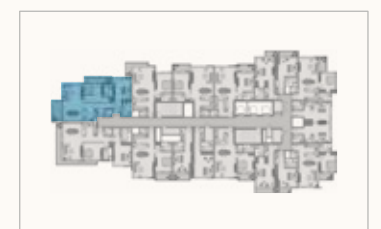
All photos, layouts, information and details in this materials are indicative only and may change at any time up to the final 'as built' status in accordance with regulatory approvals, planning permissions and final designs of the project.

### 3 / 6 FLOOR

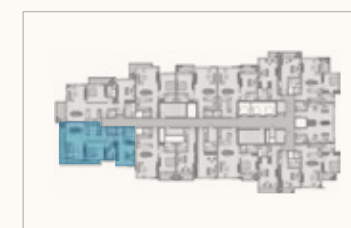
STUDIO	8
1 BEDROOM	7
2 BEDROOM	2
UNITS	17



## 2 BEDROOM



AREA 1588.51 Sq. ft



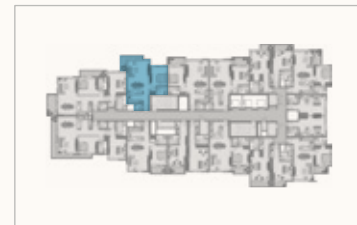
AREA 1591.83 Sq. ft



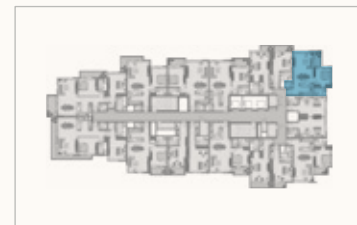
All photos, layouts, information and details in this materials are indicative only and may change at any time up to the final 'as built' status in accordance with regulatory approvals, planning permissions and final designs of the project.

All photos, layouts, information and details in this materials are indicative only and may change at any time up to the final 'as built' status in accordance with regulatory approvals, planning permissions and final designs of the project.

# 1 BEDROOM



AREA 989.20 Sq. ft

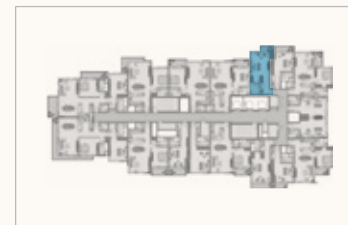


AREA 953.55 Sq. ft

# STUDIO



AREA 488.44 Sq. ft



AREA 542.42 Sq. ft

All photos, layouts, information and details in this materials are indicative only and may change at any time up to the final 'as built' status in accordance with regulatory approvals, planning permissions and final designs of the project.

All photos, layouts, information and details in this materials are indicative only and may change at any time up to the final 'as built' status in accordance with regulatory approvals, planning permissions and final designs of the project.

# THE VISIONARY WORLD OF AJMAL MAKAN CITY

Emerging from the Arabian Gulf, AJMAL MAKAN City - Sharjah Waterfront is a marvel of urban design. An awe-inspiring collection of eight islands, Ajmal Makan is not only building a city but also cultivating a lifestyle of opulence and harmony.

This mixed-use development, is a vibrant community promising a life of splendor and ease. Here, luxury and convenience converge, crafting a cityscape that's as breathtaking as it is functional.





## A DEDICATION TO EXCELLENCE

The team at Ajmal Makan is a constellation of industry trailblazers, each with an extensive portfolio of success stories across Europe, Asia, the USA, and the Middle East. This collective of passionate professionals is renowned for challenging conventions and transcending the traditional boundaries of real estate.

## ABOUT THE DEVELOPER - AJMAL MAKAN

### A LEGACY OF VISIONARY REAL ESTATE MASTERY

Ajmal Makan, a leader in UAE's real estate development, designs and develops more than just properties; Ajmal Makan sculpts landmarks of tomorrow.

As a master developer of cities and vibrant communities, Ajmal Makan has an unwavering legacy of creating environments that redefine luxury living. With a focus on mixed-use master-planned developments, the company has been pivotal in transforming the waterfront landscape of Sharjah.

### ACCOLADES THAT SPEAK VOLUMES

Ajmal Makan's commitment to excellence has been recognized through prestigious awards, showcasing its role as a forerunner in the industry:

Excellence Award For 4<sup>th</sup> Annual  
Water & Energy Congress  
[Sharjah](#)

Arabian Business Real Estate Award For  
Best Waterfront Project  
[Dubai](#)

10<sup>th</sup> Annual Leadership & Management  
Excellence Award  
[Sharjah](#)

9<sup>th</sup> Annual Leadership & Management  
Congress Award  
[Sharjah](#)

8<sup>th</sup> Annual Project Management  
Congress Award  
[Sharjah](#)



**MAJARA**  
LUXURY REAL ESTATE L.L.C

UAE: +971 58 586 4405  
CH: +41 79 777 3773  
info@majara-realestate.com  
www.majara-realestate.com

MAJARA REAL ESTATE L.L.C  
Burj Al Salam Tower, 36th floor  
Sheikh Zayed Road  
Dubai, U.A.E.

  
**Blue Pearls**

AN AJMAL MAKAN DEVELOPMENT