

An aerial photograph of the ocean with vibrant turquoise and deep blue waves. A semi-transparent rectangular box is centered in the image, containing the text 'BEACH HOUSE' in a large, white, serif font, and 'AT BAY RESIDENCES' in a smaller, white, sans-serif font below it.

BEACH HOUSE

AT BAY RESIDENCES

MAJARA LUXURY REAL ESTATE LLC

Head Office Level 36-01, Po Box :124382 , Trade Center 1, Sheikh Zayed Road , Burj Al Salam Tower Dubai UAE

Majara Presents the Beach House at Bay Residence,
Mina Al Arab



Ocean At Your Doorstep

Expansive terraces lead directly onto the beach, inviting you to step effortlessly onto soft sands and into the gentle embrace of the ocean

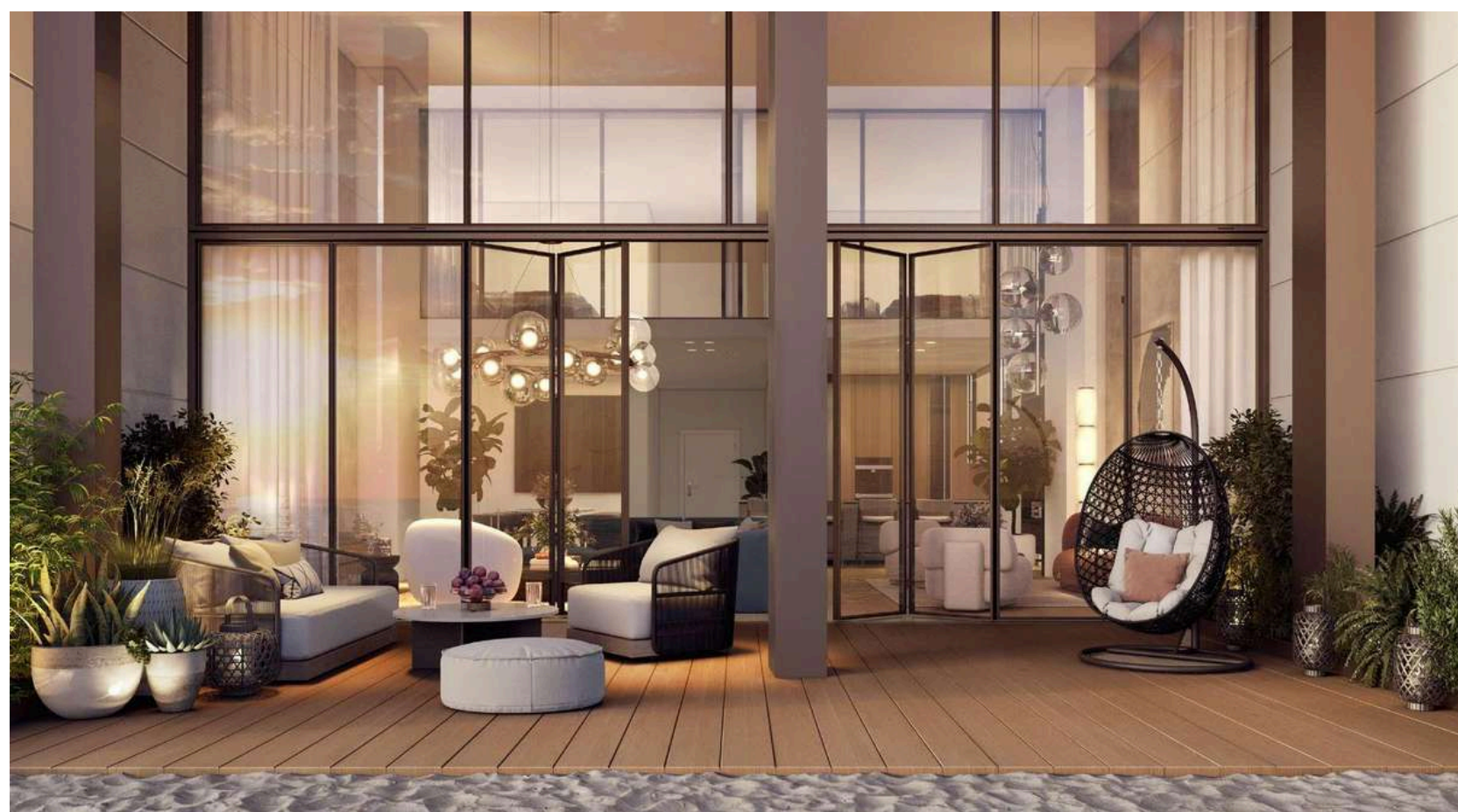


Explore thoughtfully curated amenities designed for exceptional living
Private Beach | Infinity Pools | Gourmet Dining | Premium Retail |
Jogging Trails | World-Class Gym



Signature Residences

Featuring dedicated maid rooms, expansive living spaces, and generous terraces with panoramic ocean views, perfectly designed for sophisticated family living and entertaining.



TWO-BEDROOM RESIDENCES

Thoughtfully crafted two-bedroom residences offer expansive layouts where elegant open spaces flow effortlessly onto generous terraces. Designed to celebrate the tranquility of coastal living, these homes provide an intimate setting for relaxation and memorable gatherings.

THREE-BEDROOM RESIDENCES

Complemented by dedicated maid rooms, expansive living areas, and generously sized terraces offering breathtaking panoramic ocean views, tailored specifically for sophisticated family living and entertaining.



LIVING AND DINING AREA

Flooring	Large format Porcelain tiles
Floor Skirting	Porcelain tiles
Walls	Matt emulsion paint
Ceiling	Painted gypsum ceiling with illuminated cove lights
Entrance Door	Stained timber frame with wood veneer door leaf
Internal Door	Stained timber frame with wood veneer door leaf

KITCHEN

Bottom Cabinetry	External Finish: Wood veneer built-in concealed handles Internal Finish: Melamine
Top Cabinetry	External Finish: Wood veneer Bronze tinted glass built-in concealed handles Internal Finish: Melamine
Kitchen Counter and Backsplash	Reconstituted stone
Flooring	Large format Porcelain tiles
Ceiling	Painted gypsum ceiling
Appliances	Built in Cooktop Hob Built in Oven Built in Telescopic Hood Built in Dishwasher Refrigerator *All white goods provided are of European standards



BEDROOM

Flooring	Engineered wood flooring
Floor Skirting	Engineered wood skirting
Walls	Matt emulsion paint
Ceiling	Painted gypsum ceiling with illuminated cove lights
Internal Doors	Stained timber frame with wood veneer door leaf
Bedroom Wardrobe Joinery	Laminate wardrobes with concealed lighting

BATHROOM/POWDER ROOM

Bathroom Walls	Porcelain tiles
Bathroom feature Wall	Decorative ceramic tiles
Bathroom Flooring	Porcelain Tiles
Ceiling	Water resistant, matt emulsion painted gypsum ceiling
Bathroom Counters	Reconstituted stone
Vanity unit Joinery	Laminate finish doors Built-in concealed handles
Shower Room	Clear tempered glass
Sanitaryware	All sanitaryware provided is of European standards
Sanitary Accessories	All sanitary accessories provided is of European standards
Mirror	Large, clear mirror
Internal Doors	Stained timber frame with wood veneer door leaf



BEACH HOUSE

2 BEDROOM

UNIT G01



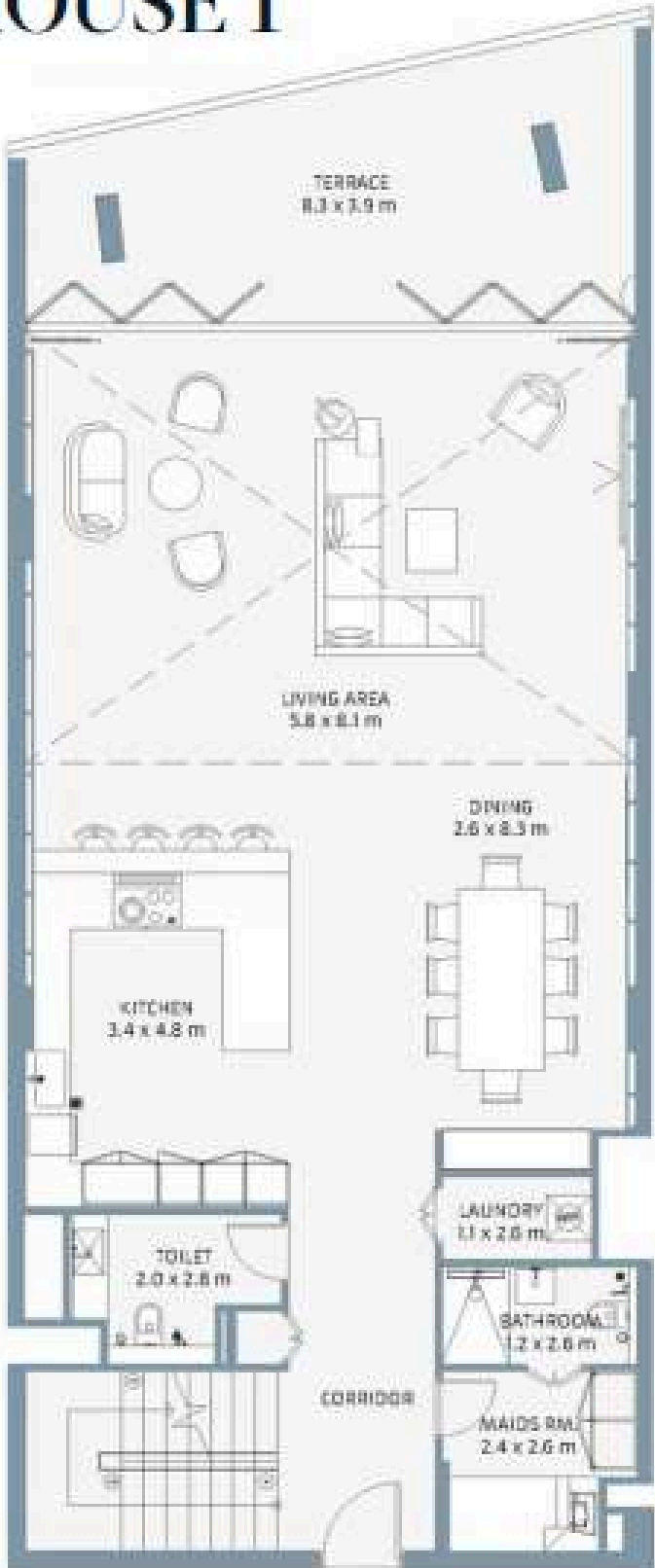
EXTERIOR	
2 Ensuite Bedrooms	
Kitchen	
Living & Dining	
Laundry Closet	
Powder Room	
Balcony	

AREA	
Interior	301.05 SQ M/ 3264.39 SQ FT
Balcony	26.55 SQ M/ 285.78 SQ FT
Total	327.60 SQ M/ 3550.17 SQ FT



BEACH HOUSE 1
2 BEDROOM
UNIT G02

BEACH HOUSE



FINISHES	
2 Ensuite Bedrooms	
Kitchen	
Living & Dining	
Laundry Closet	
Powder Room	
Balcony	

AREA	
Interior	226.66 SQ M/ 2436.75 SQ FT
Balcony	17.32 SQ M/ 184.07 SQ FT
Total	253.98 SQ M/ 2733.82 SQ FT

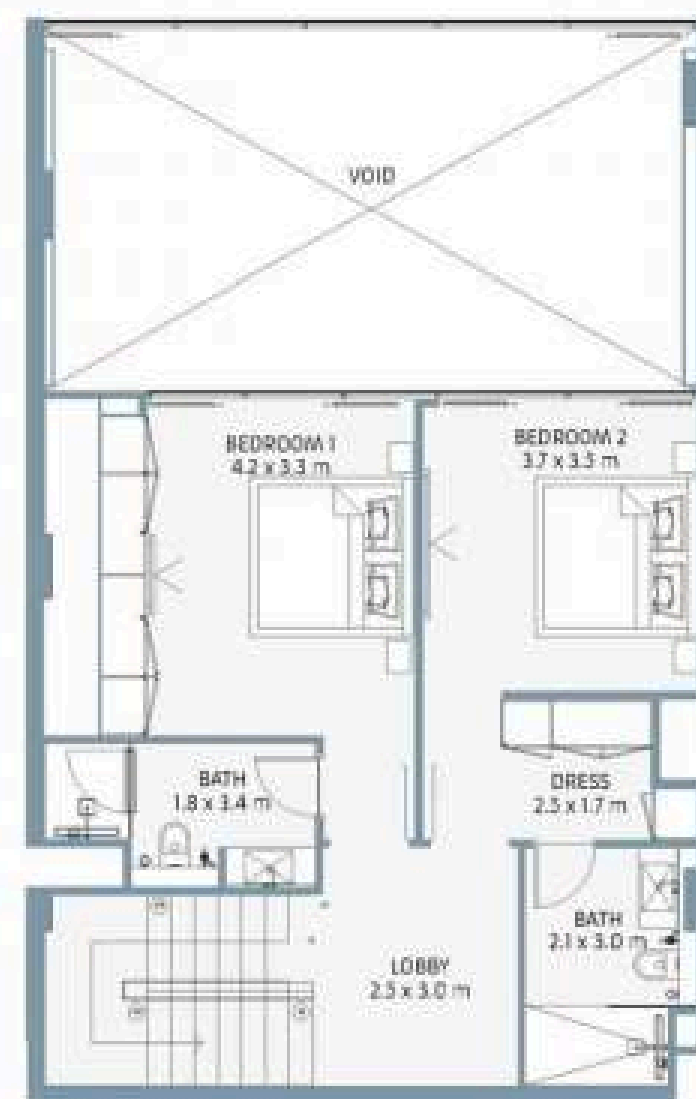


BEACH HOUSE 1

2 BEDROOM

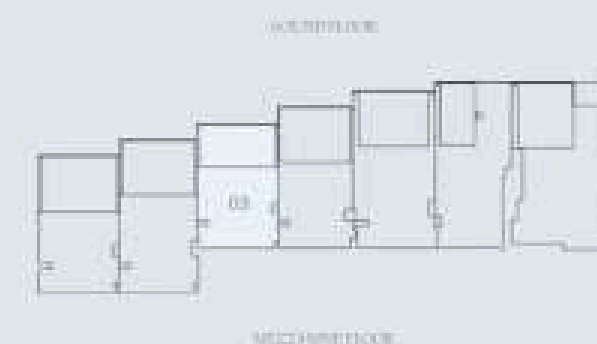
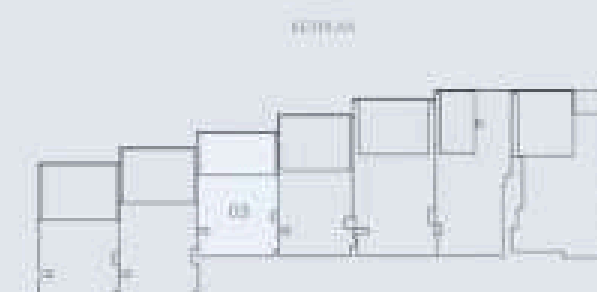
UNIT G03

BEACH HOUSE



FEATURES	
2 Ensuite Bedrooms	
Kitchen	
Living & Dining	
Laundry Closet	
Powder Room	
Balcony	

AREA	
Interior	189.14 SQ M/ 2053.12 SQ FT
Balcony	27.67 SQ M/ 297.04 SQ FT
Total	216.81 SQ M/ 2350.16 SQ FT



BEACH HOUSE

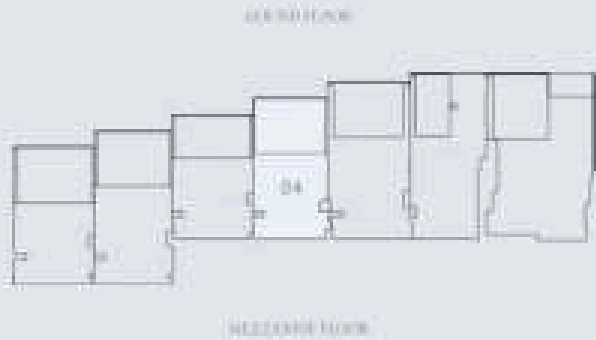
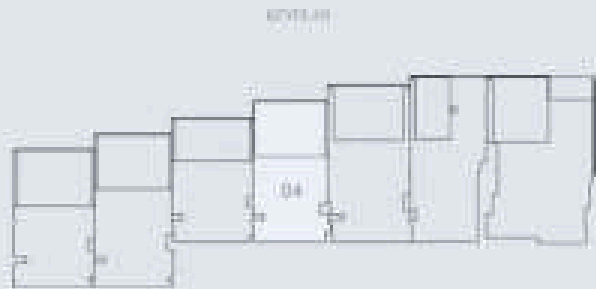
2 BEDROOM

UNIT G04



ROOMS	
2 Ensuite Bedrooms	
Kitchen	
Living & Dining	
Laundry Closet	
Powder Room	
Balcony	

AREA	
Interior	199.8 SQ M/ 2151.71 SQ FT
Balcony	26.57 SQ M/ 285.84 SQ FT
Total	226.27 SQ M/ 2438.55 SQ FT



BEACH HOUSE 1

2 BEDROOM
UNIT G05

BEACH HOUSE



ROOMS	
2 Ensuite Bedrooms	
Kitchen	
Living & Dining	
Laundry Closet	
Powder Room	
Balcony	

AREA	
Interior	242.24 SQ.M/ 2612.83 SQ.FT
Balcony	28.58 SQ.M/ 307.61 SQ.FT
Total	270.82 SQ.M/ 2920.46 SQ.FT



BEACH HOUSE 1

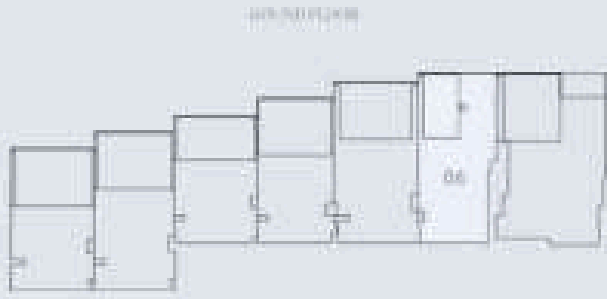
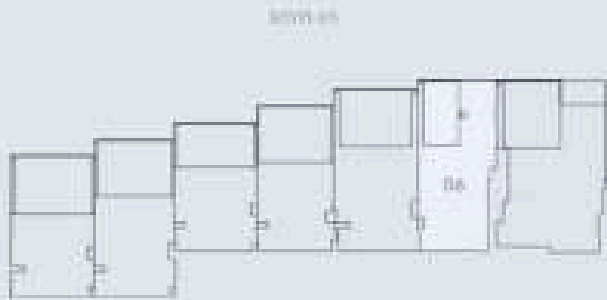
3 BEDROOM
UNIT G06

BEACH HOUSE



Features	
3 Ensuite Bedrooms	
Kitchen	
Living & Dining	
Laundry Closet	
Powder Room	
Balcony	

Area	
Interior	280.36 SQ.M/ 3001.42 SQ.FT
Balcony	34.38 SQ.M/ 370.06 SQ.FT
Total	294.64 SQ.M/ 3171.48 SQ.FT



MEZZANINE FLOOR

BEACH HOUSE 1

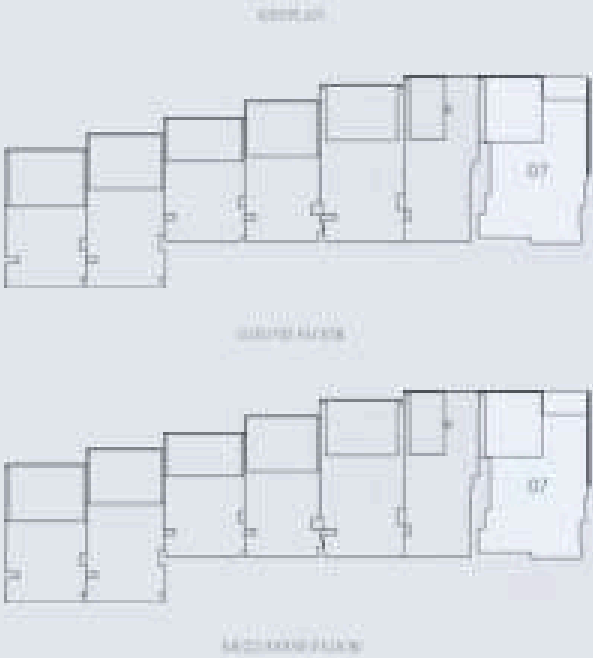
3 BEDROOM
UNIT G07

BEACH HOUSE



FEATURES	
1 En-suite Bedrooms	
Kitchen	
Living & Dining	
Laundry Closet	
Powder Room	
Balcony	

MEASUREMENTS	
Interior	333.12 SQ M / 3585.67 SQ FT
Balcony	82.51 SQ M / 888.33 SQ FT
Total	415.63 SQ M / 4473.98 SQ FT



BEACH HOUSE

2

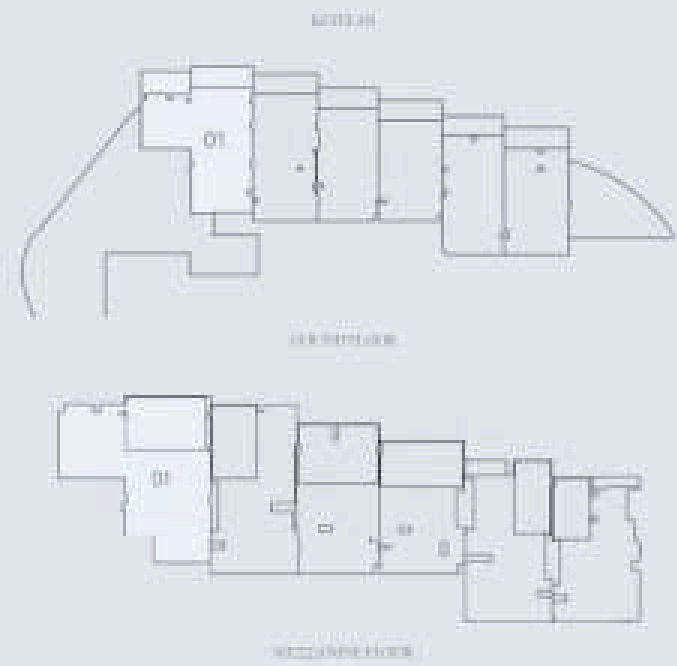
3 BEDROOM

UNIT G01



FURNITURE	
3 Ensuite Bedrooms	
Kitchen	
Living & Dining	
Laundry/Closet	
Powder Room	
Balcony	

AREA	
Interior	319.3 SQ M / 3439.07 SQ FT
Balcony	43.30 SQ M / 466.72 SQ FT
Total	362.66 SQ M / 3905.79 SQ FT

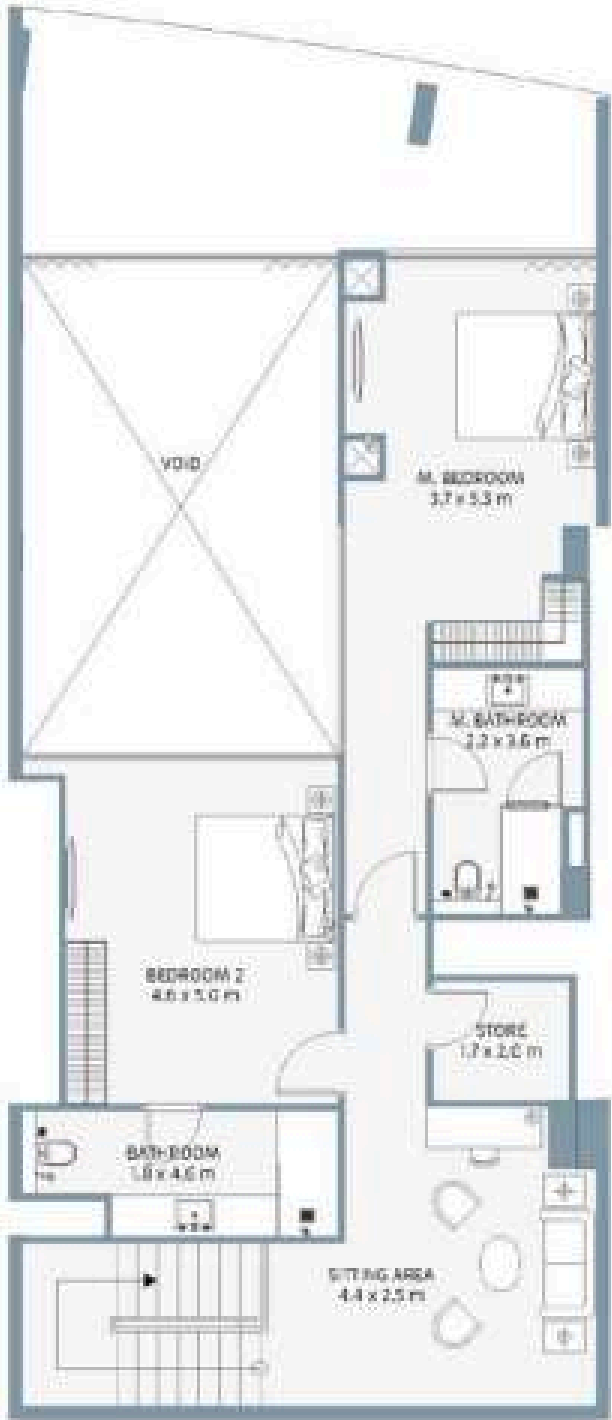


BEACH HOUSE 2

3 BEDROOM

UNIT G02

BEACH HOUSE



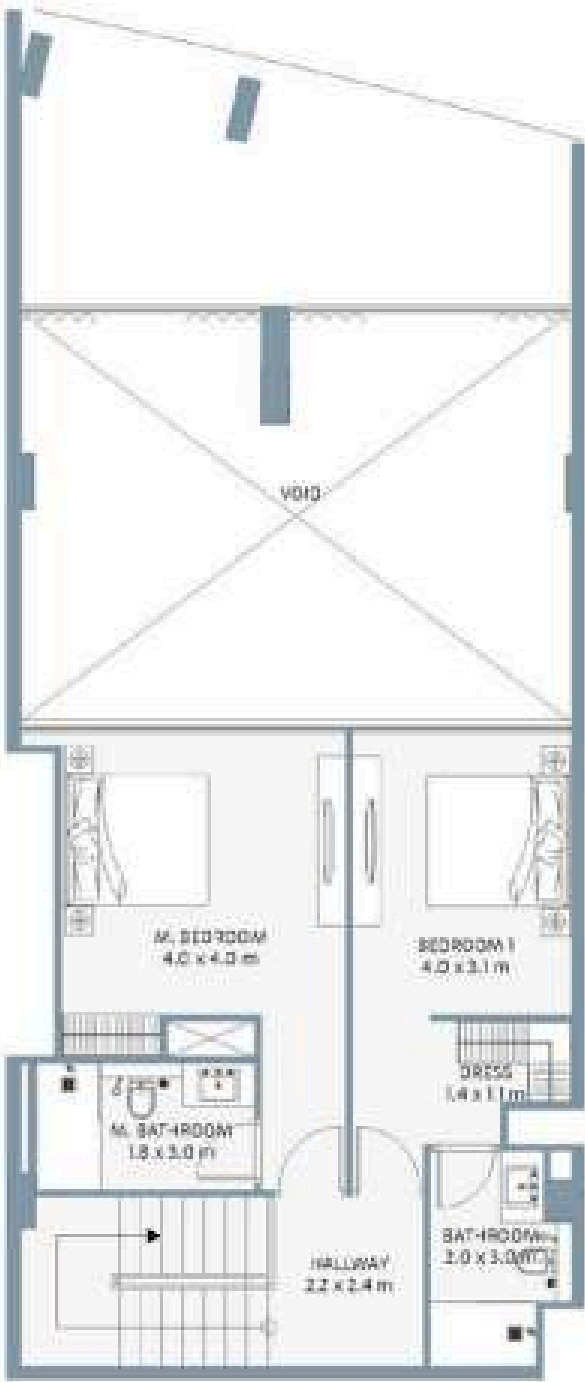
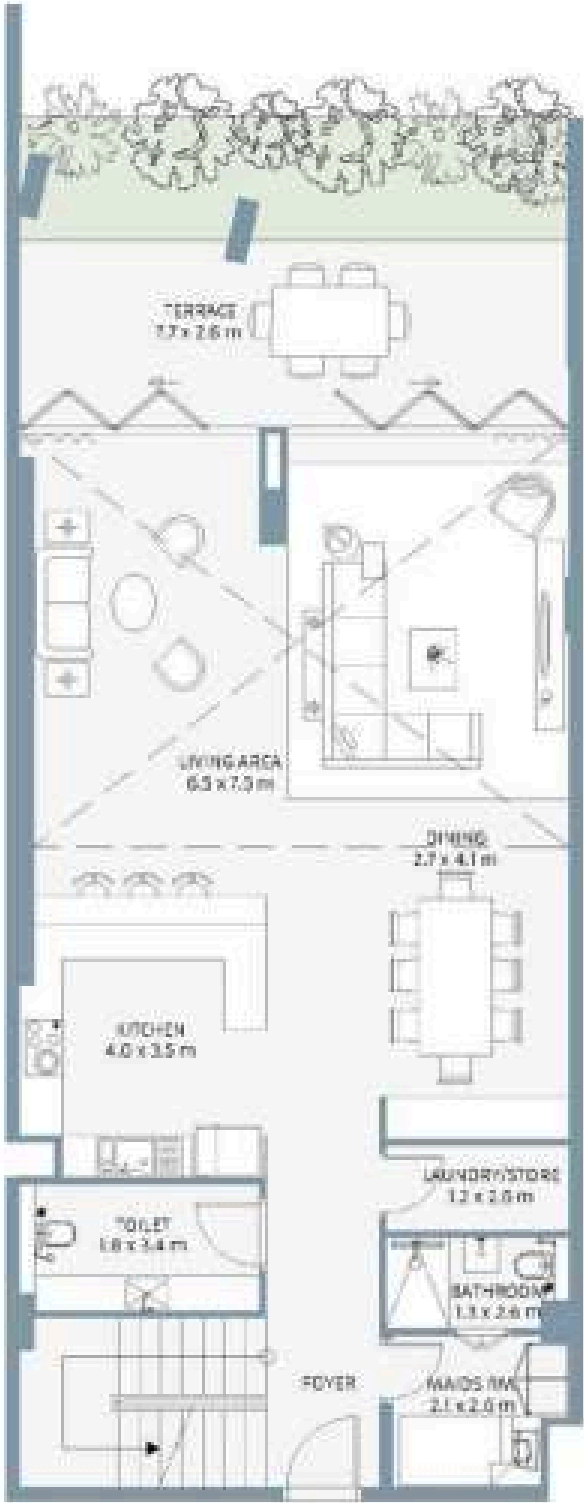
OUTDOOR	
3-Ensuite Bedrooms	
Kitchen	
Living & Dining	
Laundry Closet	
Powder Room	
Balcony	

INDOOR	
Interior	248.05 SQ.M/ 2669.99 SQ.FT
Balcony	22.08 SQ.M/ 240.8 SQ.FT
Total	270.16 SQ.M/ 2910.58 SQ.FT



BEACH HOUSE 2
2 BEDROOM
UNIT G03

BEACH HOUSE



GROUND FLOOR	
2 Ensuite Bedrooms	
Kitchen	
Living & Dining	
Laundry Closet	
Powder Room	
Balcony	

AREA	
Interior	191.24 SQ M / 2058.49 SQ FT
Balcony	21.6 SQ M / 232.3 SQ FT
Total	212.84 SQ M / 2290.99 SQ FT

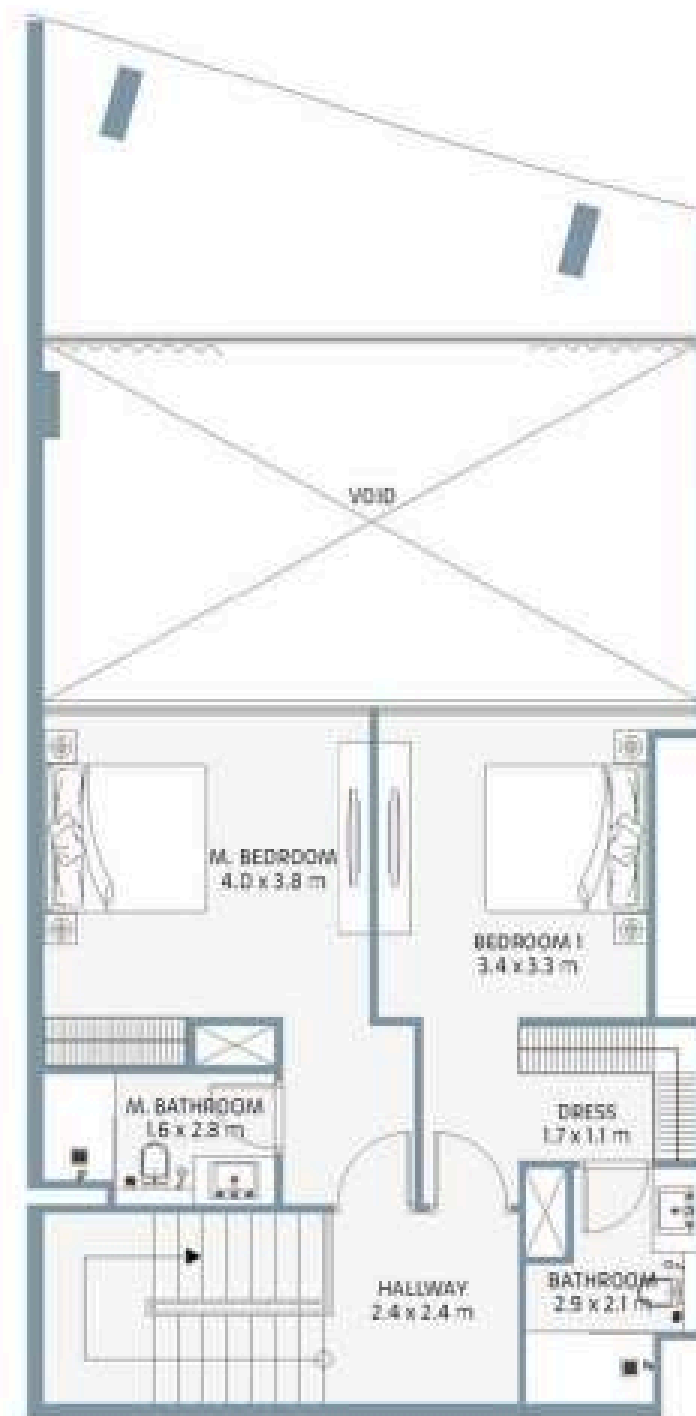
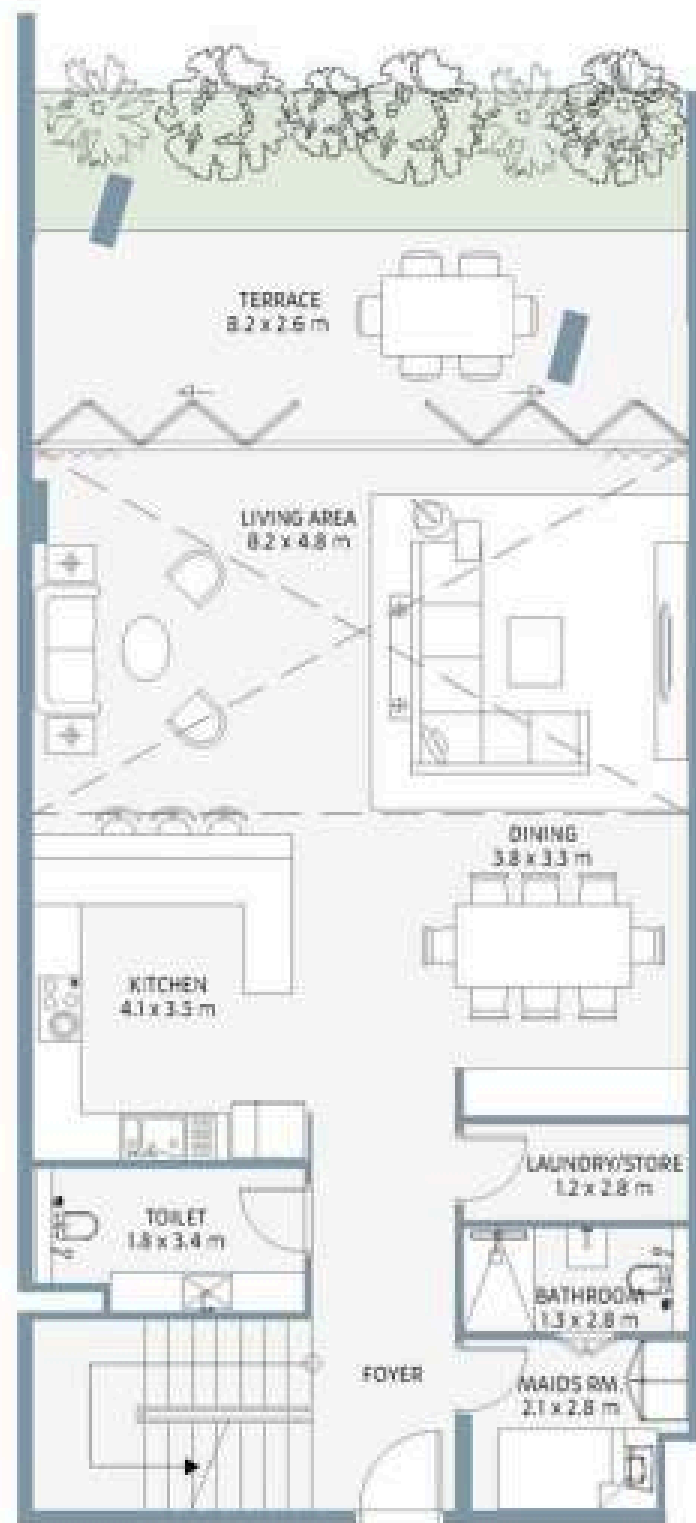


BEACH HOUSE 2

2 BEDROOM

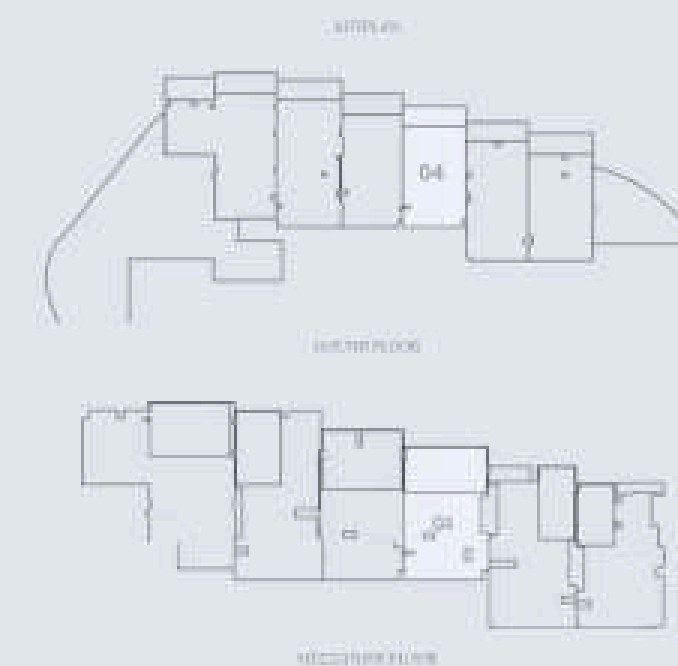
UNIT G04

BEACH HOUSE



Rooms	
2 Ensuite Bedrooms	
Kitchen	
Living & Dining	
Laundry Closet	
Powder Room	
Balcony	

Area	
Interior	383.9 SQ M/ 1979.48 SQ FT
Balcony	22.76 SQ M/ 244.96 SQ FT
Total	206.66 SQ M/ 2224.47 SQ FT

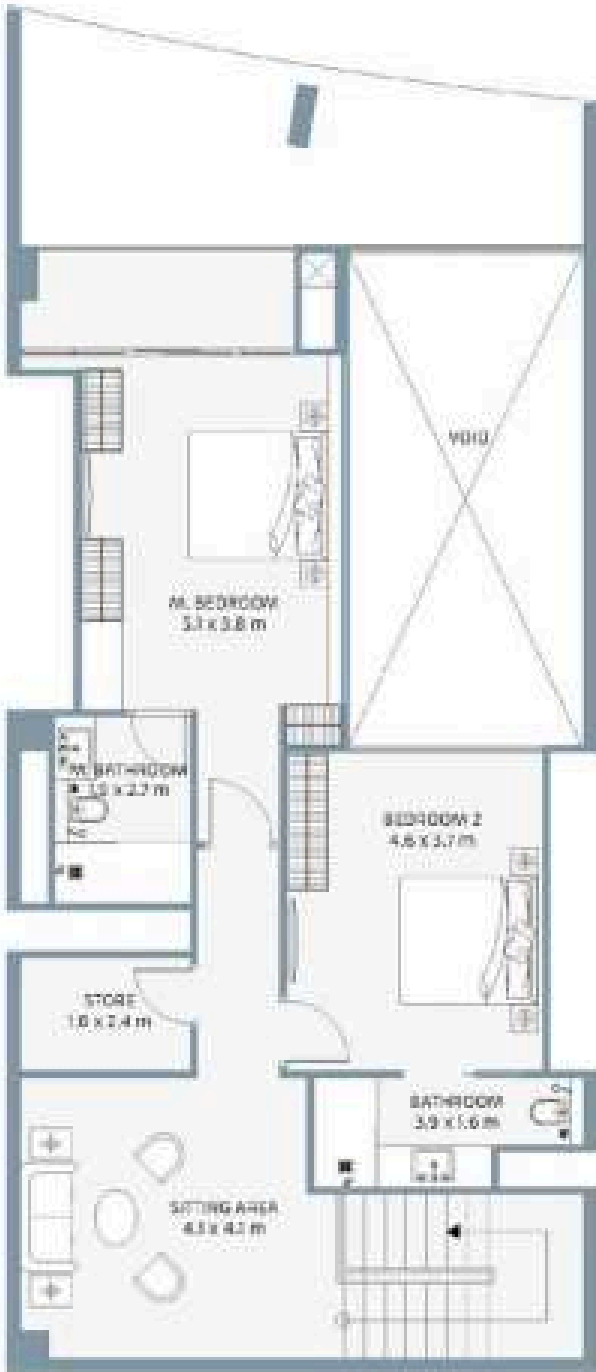
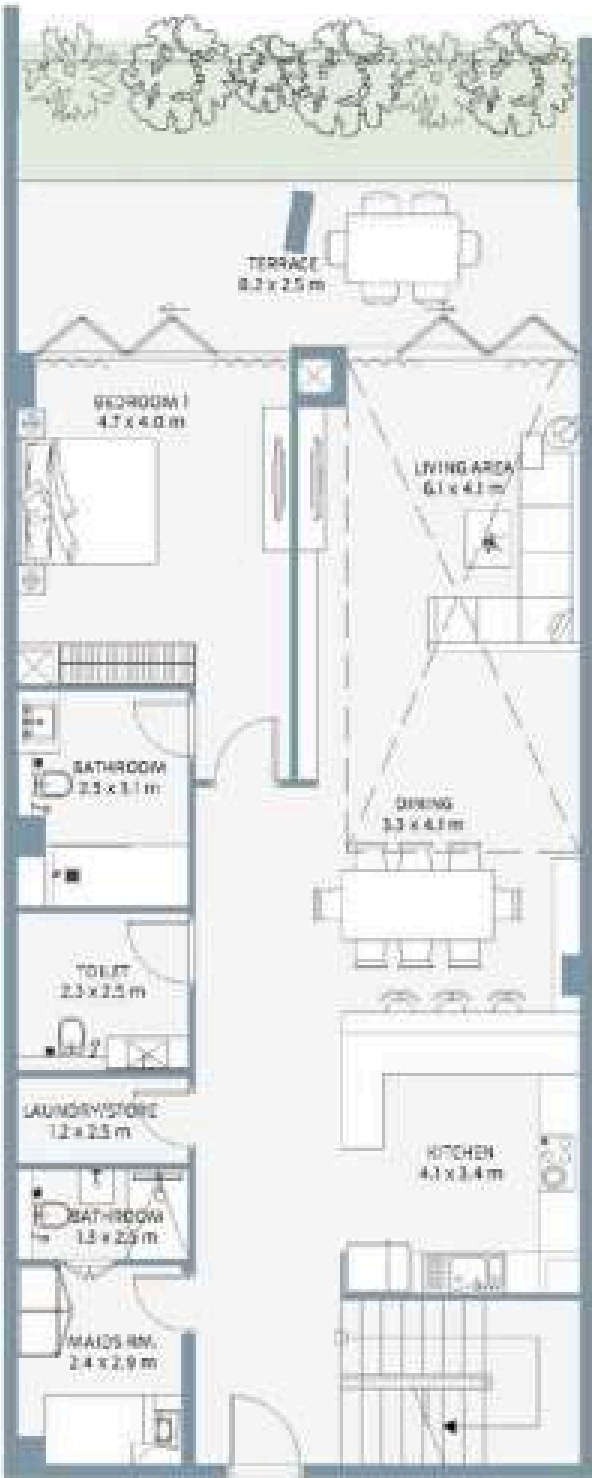


BEACH HOUSE 2

3 BEDROOM

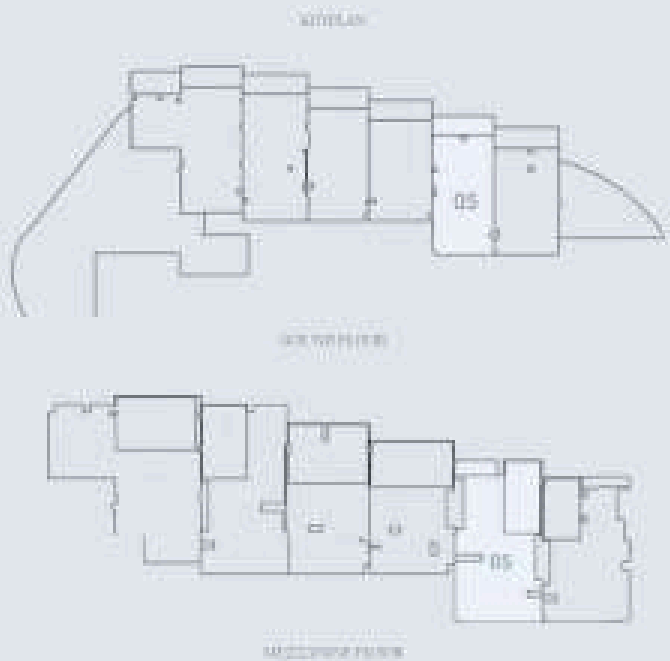
UNIT G05

BEACH HOUSE



FEATURES	
3 Ensuite Bedrooms	
Kitchen	
Living & Dining	
Laundry Closet	
Powder Room	
Balcony	

AREA	
Interior	228.24 SQ M/ 2456.73 SQ FT
Balcony	27.52 SQ M/ 296.23 SQ FT
Total	255.76 SQ M/ 2752.96 SQ FT



BEACH HOUSE

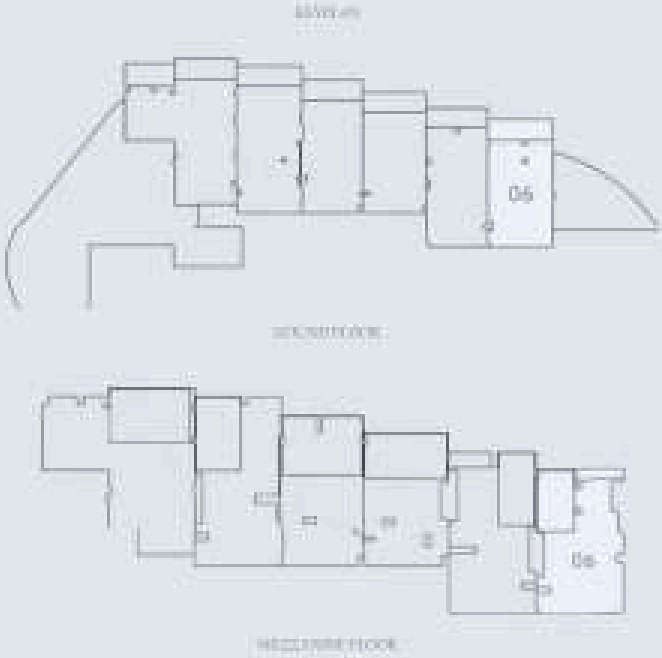
3 BEDROOM

UNIT G06



ROOMS	
1 Ensuite Bedroom	
Kitchen	
Living & Dining	
Laundry Closet	
Powder Room	
Balcony	

AREA	
Interior	207.41 SQ.M / 2232.54 SQ.FT
Balcony	28.83 SQ.M / 310.34 SQ.FT
Total	236.26 SQ.M / 2543.08 SQ.FT





Where Prestige Meets Property



At Majara Luxury Real Estate L.L.C., we redefine the art of luxury living. Based in the heart of the UAE, we specialize in curating exceptional real estate experiences tailored to the needs of discerning investors, end-users, and global clientele.



With a refined portfolio of premium properties across all seven Emirates, our expertise lies in both off-plan and ready-to-move assets, offering opportunities that blend architectural excellence with investment potential.



We are more than just property consultants & we are partners in your journey to finding the perfect home, investment, or lifestyle. Driven by integrity, market insight, and personalized service, Majara stands as a trusted name in an ever-evolving market.

Contact Us :

Phone: +971564452803

Email: info@majararealestate.com

<https://majararealestate.com>