



BEACH HOUSE

AT BAY RESIDENCES

www.majara-realestate.com

An aerial photograph of a tropical beach. The top half of the image shows clear, turquoise ocean water with gentle waves washing onto a wide, white sandy beach. The bottom half of the image shows several lush green palm trees and other tropical foliage. The overall scene is serene and idyllic.

*Where Time Pauses,
The Ocean Awaken*

Ocean At Your Doorstep

Expansive terraces lead directly onto the beach, inviting you to step effortlessly onto soft sands and into the gentle embrace of the ocean.

BEACH HOUSE





BEACH HOUSE
BY BAY REFINED

BEACH HOUSE

*Discover A Life
By The Sea*

BEACH HOUSE

*Coastal Living,
Elegantly Reinterpreted*



BEACH HOUSE

World of Amenities

Explore thoughtfully curated amenities
designed for exceptional living

Private Beach | Infinity Pools | Gourmet Dining | Premium Retail |
Jogging Trails | World-Class Gym

BEACH HOUSE



Exquisite Residences

Featuring dedicated maid rooms, expansive living spaces, and generous terraces with panoramic ocean views, perfectly designed for sophisticated family living and entertaining.



BEACH HOUSE





TWO-BEDROOM RESIDENCES

Thoughtfully crafted two-bedroom residences offer expansive layouts where elegant open spaces flow effortlessly onto generous terraces. Designed to celebrate the tranquility of coastal living, these homes provide an intimate setting for relaxation and memorable gatherings.

THREE-BEDROOM RESIDENCES

Complemented by dedicated maid rooms, expansive living areas, and generously sized terraces offering breathtaking panoramic ocean views, tailored specifically for sophisticated family living and entertaining.



LIVING AND DINING AREA

Flooring	Large format Porcelain tiles
Floor Skirting	Porcelain tiles
Walls	Matt emulsion paint
Ceiling	Painted gypsum ceiling with illuminated cove lights
Entrance Door	Stained timber frame with wood veneer door leaf
Internal Door	Stained timber frame with wood veneer door leaf

KITCHEN

Bottom Cabinetry	External Finish: Wood veneer built-in concealed handles Internal Finish: Melamine
Top Cabinetry	External Finish: Wood veneer Bronze tinted glass built-in concealed handles Internal Finish: Melamine
Kitchen Counter and Backsplash	Reconstituted stone
Flooring	Large format Porcelain tiles
Ceiling	Painted gypsum ceiling
Appliances	Built in Cooktop Hob Built in Oven Built in Telescopic Hood Built in Dishwasher Refrigerator *All white goods provided are of European standards

The information, including plans, specifications, images, and other details, is indicative and subject to change. RAK Properties reserves the right to modify these without notice to ensure equivalent or higher standards. Brand choices are subject to final decision, and designer's impressions may apply to select apartments only.



BEDROOM

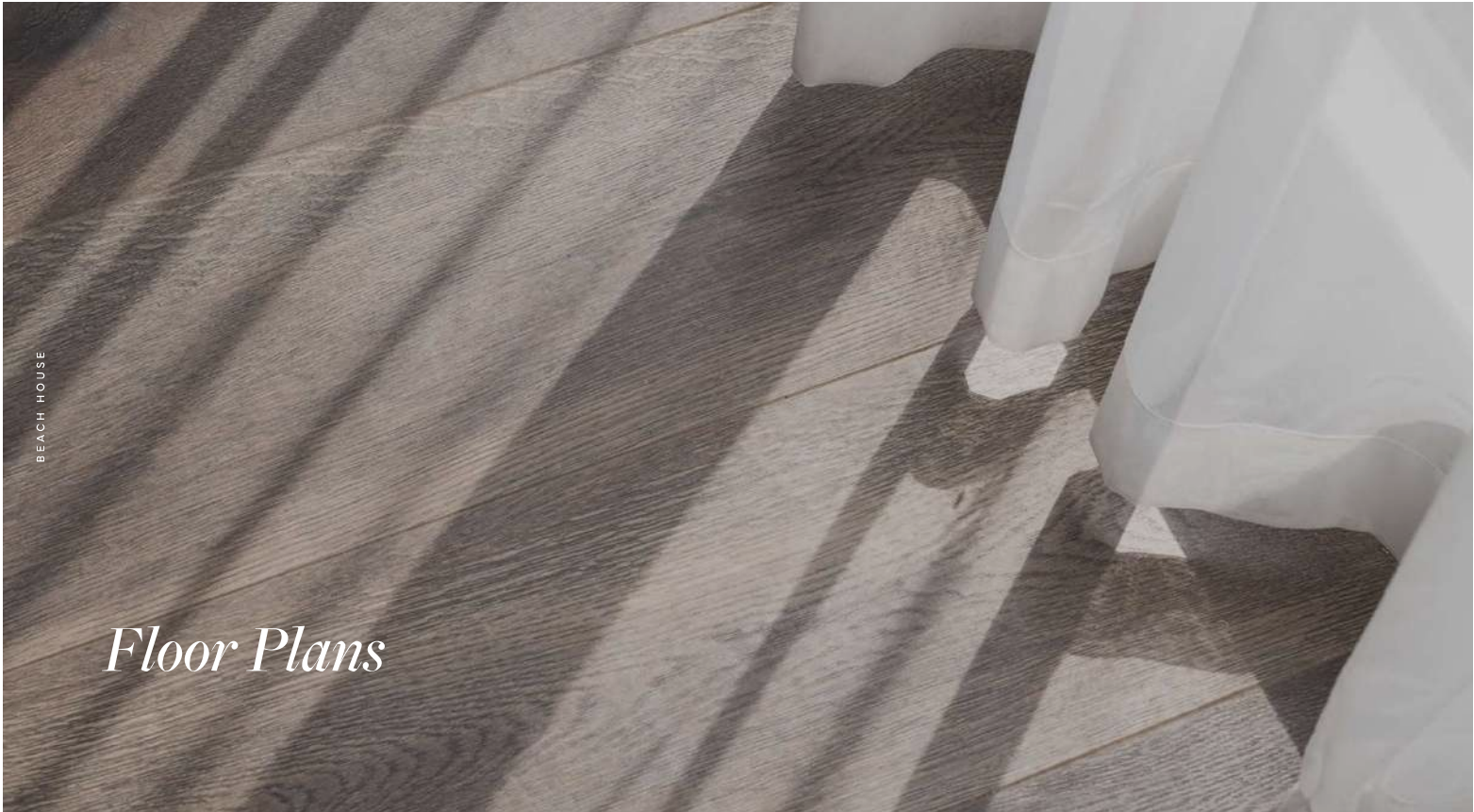
Flooring	Engineered wood flooring
Floor Skirting	Engineered wood skirting
Walls	Matt emulsion paint
Ceiling	Painted gypsum ceiling with illuminated cove lights
Internal Doors	Stained timber frame with wood veneer door leaf
Bedroom Wardrobe Joinery	Laminate wardrobes with concealed lighting

BATHROOM/POWDER ROOM

Bathroom Walls	Porcelain tiles
Bathroom feature Wall	Decorative ceramic tiles
Bathroom Flooring	Porcelain Tiles
Ceiling	Water resistant, matt emulsion painted gypsum ceiling
Bathroom Counters	Reconstituted stone
Vanity unit Joinery	Laminate finish doors Built-in concealed handles
Shower Room	Clear tempered glass
Sanitaryware	All sanitaryware provided is of European standards
Sanitary Accessories	All sanitary accessories provided is of European standards
Mirror	Large, clear mirror
Internal Doors	Stained timber frame with wood veneer door leaf

The information, including plans, specifications, images, and other details, is indicative and subject to change. RAK Properties reserves the right to modify these without notice to ensure equivalent or higher standards. Brand choices are subject to final decision, and designer's impressions may apply to select apartments only.

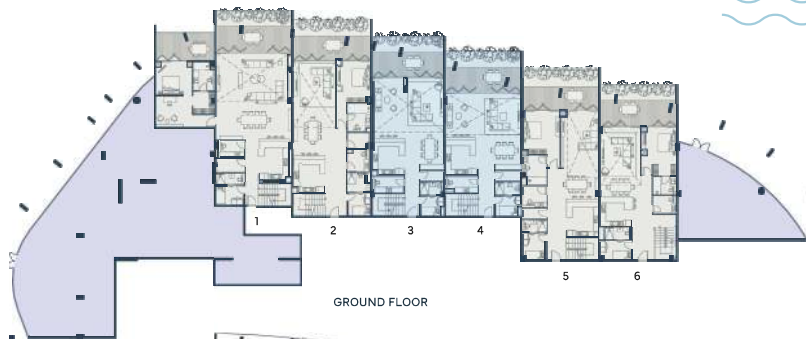
Floor Plans



BEACH HOUSE

AT BAY RESIDENCES

BEACH HOUSE 2



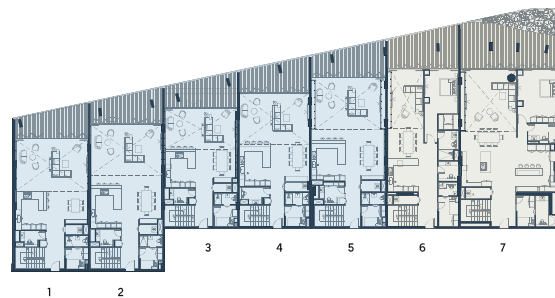
GROUND FLOOR



MEZANINE FLOOR



BEACH HOUSE 1



GROUND FLOOR



MEZANINE FLOOR

2 BEDROOM

3 BEDROOM

RETAIL

BEACH HOUSE 1

2 BEDROOM

UNIT G01

BEACH HOUSE



GROUND FLOOR



MEZZANINE

FEATURES

2 Ensuite Bedrooms

Kitchen

Living & Dining

Laundry Closet

Powder Room

Balcony

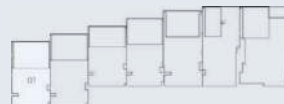
AREA

Interior 201.06 SQ M/ 2164.19 SQ FT

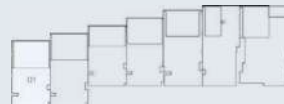
Balcony 26.55 SQ M/ 285.78 SQ FT

Total 227.61 SQ M/ 2449.97 SQ FT

KEYPLAN



GROUND FLOOR



MEZZANINE FLOOR

DISCLAIMER

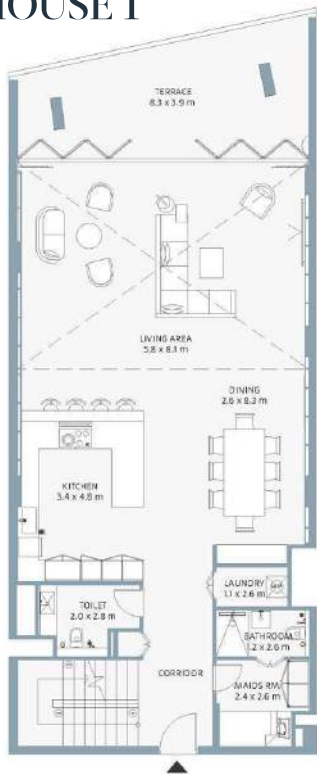
Floor plan numbers, Square footage, and floor plans are approximate and are subject to change. Final dimensions, Square footage, and floor plans may vary or be mirrored. Balcony areas may differ depending on the location of the unit on the floor. Boat dock availability and configuration are also subject to change without notice.

BEACH HOUSE 1

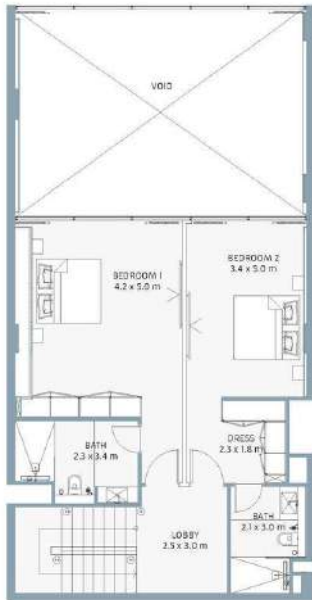
2 BEDROOM

UNIT G02

BEACH HOUSE



GROUND FLOOR



MEZZANINE

FEATURES

2 Ensuite Bedrooms

Kitchen

Living & Dining

Laundry Closet

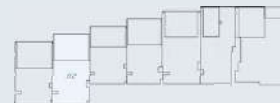
Powder Room

Balcony

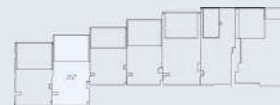
AREA

Interior	226.66 SQ M/ 2439.75 SQ FT
Balcony	27.32 SQ M/ 294.07 SQ FT
Total	253.98 SQ M/ 2733.82 SQ FT

KEYPLAN



GROUND FLOOR



MEZZANINE FLOOR

DISCLAIMER

Floor plan numbers, Square footage, and floor plans are approximate and are subject to change. Final dimensions, Square footage, and floor plans may vary or be mirrored. Balcony areas may differ depending on the location of the unit on the floor. Boat deck availability and configuration are also subject to change without notice.

BEACH HOUSE 1

2 BEDROOM

UNIT G03

BEACH HOUSE



GROUND FLOOR



MEZZANINE

FEATURES

2 Ensuite Bedrooms

Kitchen

Living & Dining

Laundry Closet

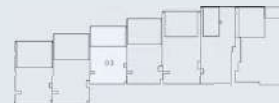
Powder Room

Balcony

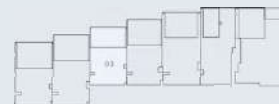
AREA

Interior	188.14 SQ M/	2025.12 SQ FT
Balcony	27.67 SQ M/	297.84 SQ FT
Total	215.81 SQ M/	2322.96 SQ FT

KIT PLAN



GROUND FLOOR



MEZZANINE FLOOR

DISCLAIMER
Floor plan numbers, Square footage, and floor plans are approximate and are subject to change. Final dimensions, Square footage, and floor plans may vary or be mirrored. Balcony areas may differ depending on the location of the unit on the floor. Boat deck availability and configuration are also subject to change without notice.

BEACH HOUSE 1

2 BEDROOM

UNIT G04

BEACH HOUSE



GROUND FLOOR



MEZZANINE

FEATURES

2 Ensuite Bedrooms

Kitchen

Living & Dining

Laundry Closet

Powder Room

Balcony

AREA

Interior	199.9 SQ M/	2151.71 SQ FT
Balcony	26.37 SQ M/	283.84 SQ FT
Total	226.27 SQ M/	2435.55 SQ FT

KEYPLAN



GROUND FLOOR



MEZZANINE FLOOR

DISCLAIMER

Floor plan numbers, Square footage, and floor plans are approximate and are subject to change. Final dimensions, Square footage, and floor plans may vary or be mirrored. Balcony areas may differ depending on the location of the unit on the floor. Boat deck availability and configuration are also subject to change without notice.

BEACH HOUSE 1

2 BEDROOM

UNIT G05

BEACH HOUSE



GROUND FLOOR



MEZZANINE

FEATURES

2 Ensuite Bedrooms

Kitchen

Living & Dining

Laundry Closet

Powder Room

Balcony

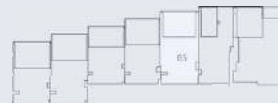
AREA

Interior 242.74 SQ M/ 2612.83 SQ FT

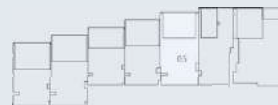
Balcony 28.58 SQ M/ 307.63 SQ FT

Total 271.32 SQ M/ 2920.46 SQ FT

KEY PLAN



GROUND FLOOR



MEZZANINE FLOOR

DISCLAIMER

Floor plan numbers, Square footage, and floor plans are approximate and are subject to change. Final dimensions, Square footage, and floor plans may vary or be mirrored. Balcony areas may differ depending on the location of the unit on the floor. Boat deck availability and configuration are also subject to change without notice.

BEACH HOUSE 1

3 BEDROOM

UNIT G06

BEACH HOUSE



GROUND FLOOR



MEZZANINE

FEATURES

3 Ensuite Bedrooms

Kitchen

Living & Dining

Laundry Closet

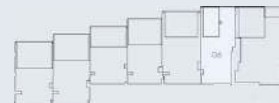
Powder Room

Balcony

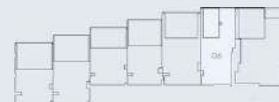
AREA

Interior	260.26 SQ M/ 2801.42 SQ FT
Balcony	34.38 SQ M/ 370.06 SQ FT
Total	294.64 SQ M/ 3171.48 SQ FT

KITCHEN



GROUND FLOOR



MEZZANINE FLOOR

DISCLAIMER

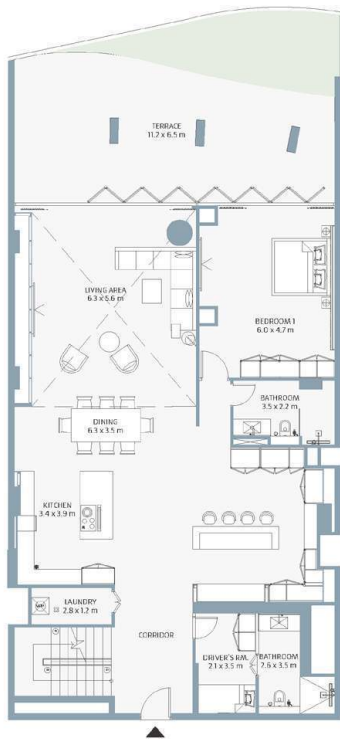
Floor plan numbers, Square footage, and floor plans are approximate and are subject to change. Final dimensions, Square footage, and floor plans may vary or be mirrored. Balcony areas may differ depending on the location of the unit on the floor. Boat deck availability and configuration are also subject to change without notice.

BEACH HOUSE 1

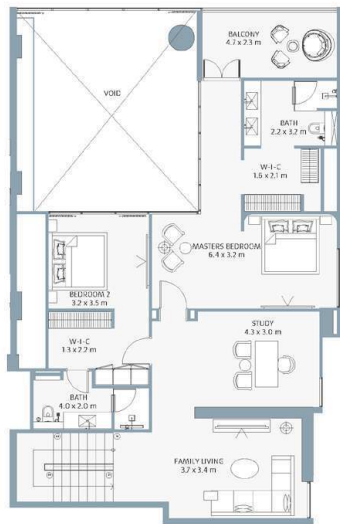
3 BEDROOM

UNIT G07

BEACH HOUSE



GROUND FLOOR



MEZZANINE

FEATURES

3 Ensuite Bedrooms

Kitchen

Living & Dining

Laundry Closet

Powder Room

Balcony

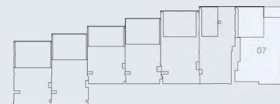
AREA

Interior 333.12 SQ M/ 3585.67 SQ FT

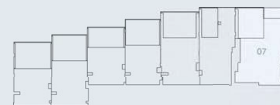
Balcony 82.51 SQ M/ 888.13 SQ FT

Total 415.63 SQ M/ 4473.8 SQ FT

KEYPLAN



GROUND FLOOR



MEZZANINE FLOOR

DISCLAIMER

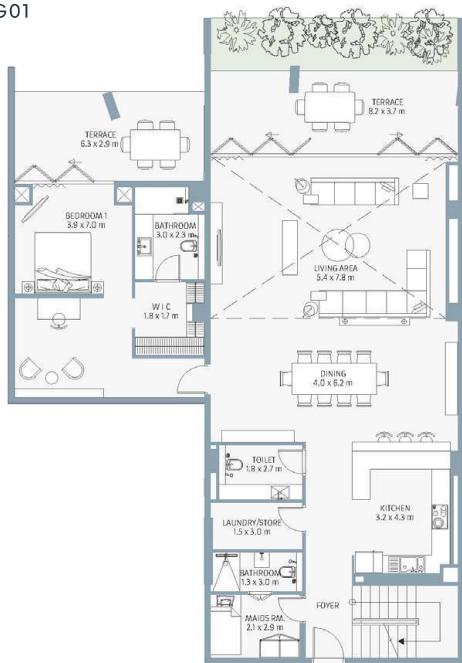
Floor plan numbers, Square footage, and floor plans are approximate and are subject to change. Final dimensions, Square footage, and floor plans may vary or be mirrored. Balcony areas may differ depending on the location of the unit on the floor. Best deck availability and configuration are also subject to change without notice.

BEACH HOUSE 2

3 BEDROOM

UNIT G01

BEACH HOUSE



GROUND FLOOR



MEZZANINE

FEATURES

3 Ensuite Bedrooms

Kitchen

Living & Dining

Laundry Closet

Powder Room

Balcony

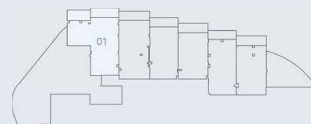
AREA

Interior 319.5 SQ M/ 3439.07 SQ FT

Balcony 43.36 SQ M/ 466.72 SQ FT

Total 362.86 SQ M/ 3905.79 SQ FT

KEY PLAN



GROUND FLOOR



MEZZANINE FLOOR

DISCLAIMER

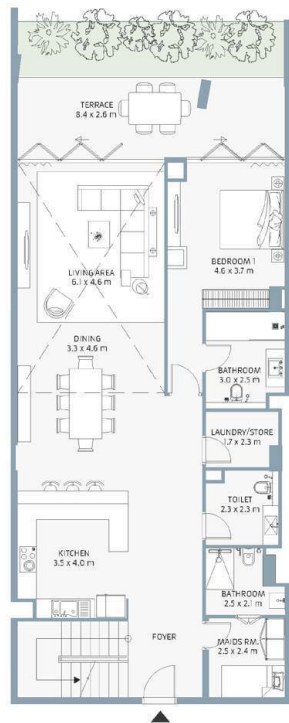
Floor plan numbers, Square footage, and floor plans are approximate and are subject to change. Final dimensions, Square footage, and floor plans may vary or be mirrored. Balcony areas may differ depending on the location of the unit on the floor. Boat deck availability and configuration are also subject to change without notice.

BEACH HOUSE 2

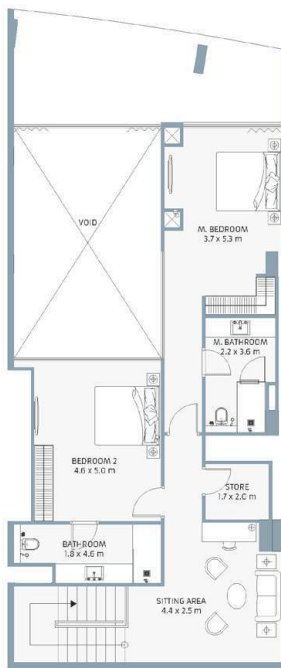
3 BEDROOM

UNIT G02

BEACH HOUSE



GROUND FLOOR



MEZZANINE

FEATURES	
3 Ensuite Bedrooms	
Kitchen	
Living & Dining	
Laundry Closet	
Powder Room	
Balcony	

AREA	
Interior	248.05 SQ M/ 2669.99 SQ FT
Balcony	22.91 SQ M/ 246.6 SQ FT
Total	270.96 SQ M/ 2916.59 SQ FT



DISCLAIMER

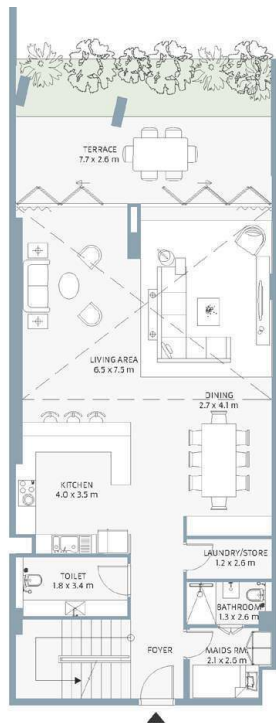
Floor plan numbers, Square footage, and floor plans are approximate and are subject to change. Final dimensions, Square footage, and floor plans may vary or be mirrored. Balcony areas may differ depending on the location of the unit on the floor. Door, deck availability and configuration are also subject to change without notice.

BEACH HOUSE 2

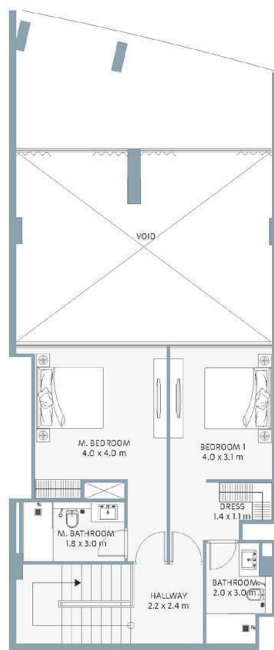
2 BEDROOM

UNIT G03

BEACH HOUSE



GROUND FLOOR



MEZZANINE

FEATURES

2 Ensuite Bedrooms

Kitchen

Living & Dining

Laundry Closet

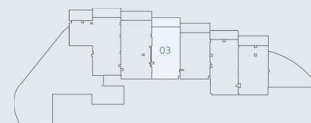
Powder Room

Balcony

AREA

	191.24 SQ M/ 2058.49 SQ FT
Interior	191.24 SQ M/ 2058.49 SQ FT
Balcony	21.6 SQ M/ 232.5 SQ FT
Total	212.84 SQ M/ 2290.99 SQ FT

KEY PLAN



GROUND FLOOR



MEZZANINE FLOOR

DISCLAIMER

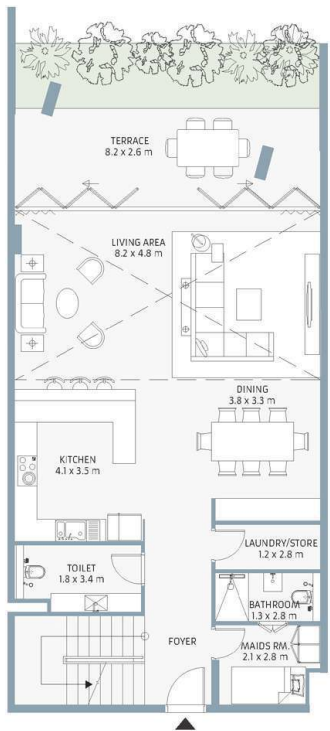
Floor plan numbers, Square footage, and floor plans are approximate and are subject to change. Final dimensions, Square footage, and floor plans may vary or be mirrored. Balcony areas may differ depending on the location of the unit on the floor. Boat deck availability and configuration are also subject to change without notice.

BEACH HOUSE 2

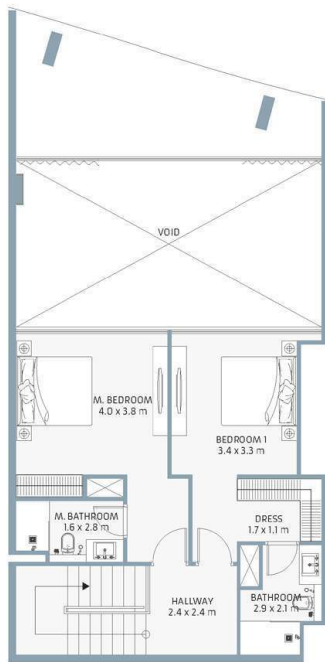
2 BEDROOM

UNIT G04

BEACH HOUSE



GROUND FLOOR



MEZZANINE

FEATURES

2 Ensuite Bedrooms

Kitchen

Living & Dining

Laundry Closet

Powder Room

Balcony

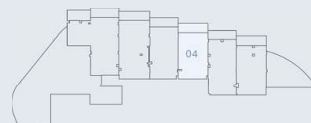
AREA

Interior 183.9 SQ M/ 1979.48 SQ FT

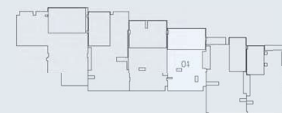
Balcony 22.76 SQ M/ 244.99 SQ FT

Total 206.66 SQ M/ 2224.47 SQ FT

KEY PLAN



GROUND FLOOR



MEZZANINE FLOOR

DISCLAIMER

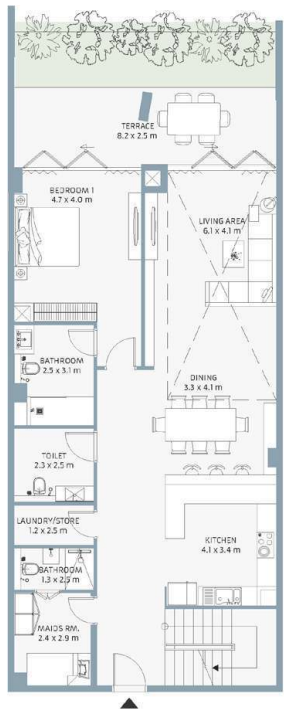
Floor plan numbers, Square footage, and floor plans are approximate and are subject to change. Final dimensions, Square footage, and floor plans may vary or be mirrored. Balcony areas may differ depending on the location of the unit on the floor. Boat deck availability and configuration are also subject to change without notice.

BEACH HOUSE 2

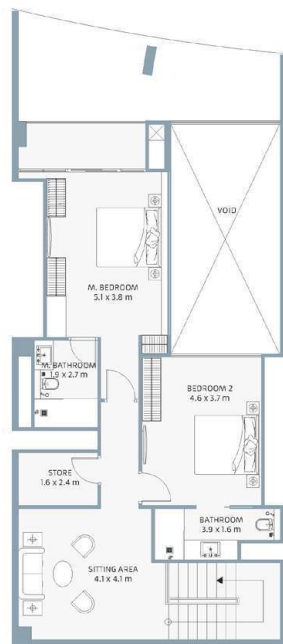
3 BEDROOM

UNIT G05

BEACH HOUSE



GROUND FLOOR



MEZZANINE

FEATURES

3 Ensuite Bedrooms

Kitchen

Living & Dining

Laundry Closet

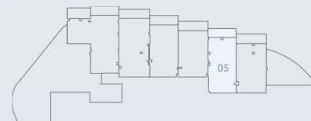
Powder Room

Balcony

AREA

Interior	228.24 SQ M/	2436.75 SQ FT
Balcony	27.52 SQ M/	296.22 SQ FT
Total	255.76 SQ M/	2732.98 SQ FT

KEY PLAN



GROUND FLOOR



MEZZANINE FLOOR

DISCLAIMER

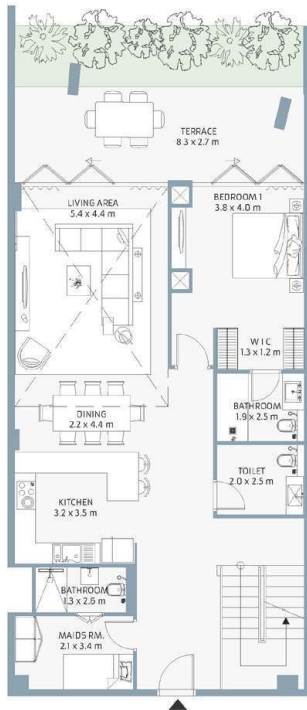
Floor plan numbers, Square footage, and floor plans are approximate and are subject to change. Final dimensions, Square footage, and floor plans may vary or be mirrored. Balcony areas may differ depending on the location of the unit on the floor. Boat deck availability and configuration are also subject to change without notice.

BEACH HOUSE 2

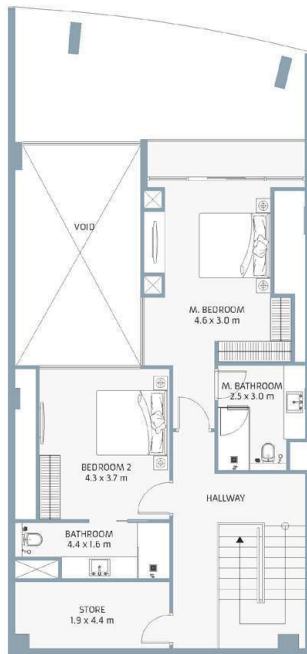
3 BEDROOM

UNIT G06

BEACH HOUSE



GROUND FLOOR



MEZZANINE

FEATURES

3 Ensuite Bedrooms

Kitchen

Living & Dining

Laundry Closet

Powder Room

Balcony

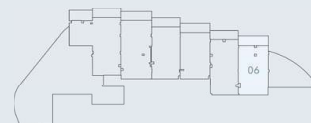
AREA

Interior 207.41 SQ M/ 2232.54 SQ FT

Balcony 28.85 SQ M/ 310.54 SQ FT

Total 236.26 SQ M/ 2543.08 SQ FT

KEY PLAN



GROUND FLOOR



MEZZANINE FLOOR

DISCLAIMER

Floor plan numbers, Square footage, and floor plans are approximate and are subject to change. Final dimensions, Square footage, and floor plans may vary or be mirrored. Balcony areas may differ depending on the location of the unit on the floor. Boat deck availability and configuration are also subject to change without notice.

MINA
Mina

Where Iconic Resorts

Meet The Sea

Step into a world where legendary hospitality meets breathtaking coastal beauty. From the serene elegance of Four Seasons to the vibrant energy of Nikki Beach. These world-class resorts redefine luxury.

Nikki Beach

Resort and Beach Club

Renowned for music, dining, entertainment, and fashion, it encompasses chic beachfront accommodation and a signature beach club where you can dance to world-renowned DJs and savour gourmet cuisine by the sea.

MINA



M I N A

Anantara

Resort and Spa

Surround yourself with nature's tranquillity and choose from 174 mangrove and ocean-facing guest rooms, including Maldivian-style water villas.

Intercontinental

Mina Al Arab Resort and Spa

Discover island charm and stay at the multi-award-winning resort, offering guests access to a pristine beachfront



MINA

Four Seasons

Resort and Residences

An exclusive beachfront retreat, where world-class hospitality meets refined luxury, featuring gourmet dining, a tranquil spa, pristine waters and a private marina, all set against a backdrop of unparalleled elegance.



M I N A

New to **MINA**

Explore Mina's bustling boulevard, sandy bays and marina,
designed for luxury living, leisure and vibrant community life.



M I N A

Angel Bay

Mina's public beachfront playground, open to all. Connecting destinations like Nikki Beach and InterContinental, it's a stretch of pristine shoreline with beachside dining, water sports, and endless activities.



Mina Boulevard

This bustling strip connects Mina Wharf and Marina, lined with retail outlets, eateries, and cultural hotspots. It's where the community comes alive – a place to connect and experience the island's energy.



Mina Harbour

A hub of culture and entertainment, Mina Harbour features eateries, boutiques, and leisure options by shimmering waters.



Yacht Club and Marina

Set to become a premier yachting destination, drawing seafarers worldwide. With facilities for superyachts and amenities for the global sailing community, Mina is strategically located along regional sailing routes.



MINA

Breath Of Fresh Air

Mina's lush mangroves and vibrant greenery fill the air with a natural freshness, enriched by coastal breezes and the untouched beauty of its surroundings.

Ras Al Khaima's

Natural Beauty

Situated in the north of the UAE, Ras Al Khaimah offers a unique escape with its untouched landscapes. Just short drive from Dubai and Abu Dhabi, it combines prime location with the serenity of mountains, beaches, and desert.



KONTAKT:

UAE: +971 58 586 4405

CH: +41 79 777 3773

info@majara-realestate.com

www.majara-realestate.com

MAJARA REAL ESTATE L.L.C
Burj Al Salam Tower, 36th floor
Sheikh Zayed Road
Dubai, U.A.E.



RAK PROPERTIES