

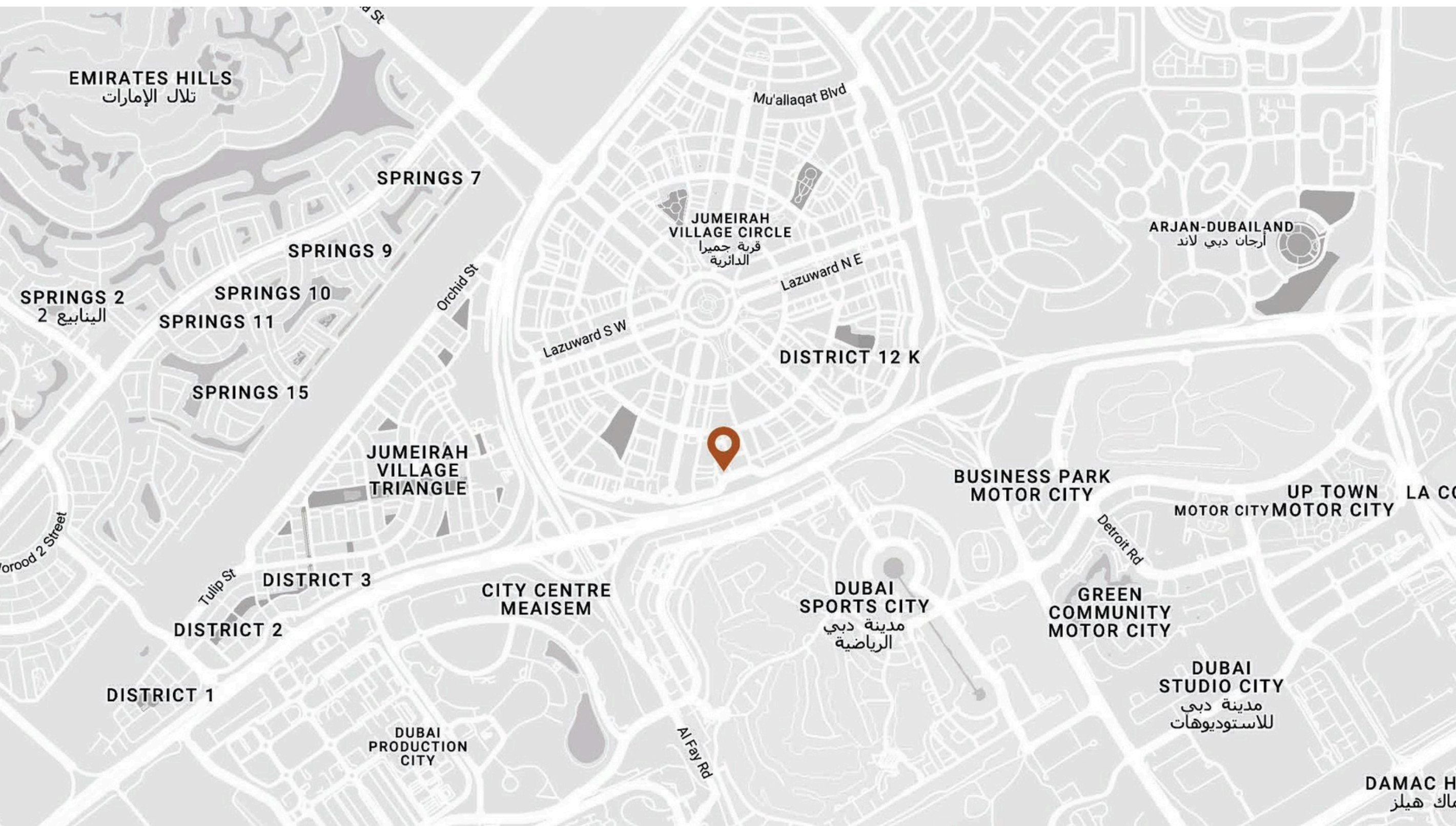


MAISON
ELYSÉE III

MAJARA LUXURY REAL ESTATE LLC

Head Office Level 36-01, Po Box :124382 ; Trade Center 1, Sheikh Zayed Road ; Burj Al Salam Tower Dubai UAE

**Majara Presents Maison Elysée III at Jumeirah Village Circle,
Dubai**



Location

- * Dubai - Jumeirah Village Circle
- * It is located near Sheikh Mohammed Bin Zayed Road and Al Khail Road
- * Mall of the Emirates: 15 minutes
- * Burj Khalifa and Dubai Mall: 20 minutes
- * Palm Jumeirah: 20 minutes
- * Dubai International Airport: 25 minutes
- * Al Maktoum Airport: 30 minutes
- * Expo 2020 site: 20 minutes

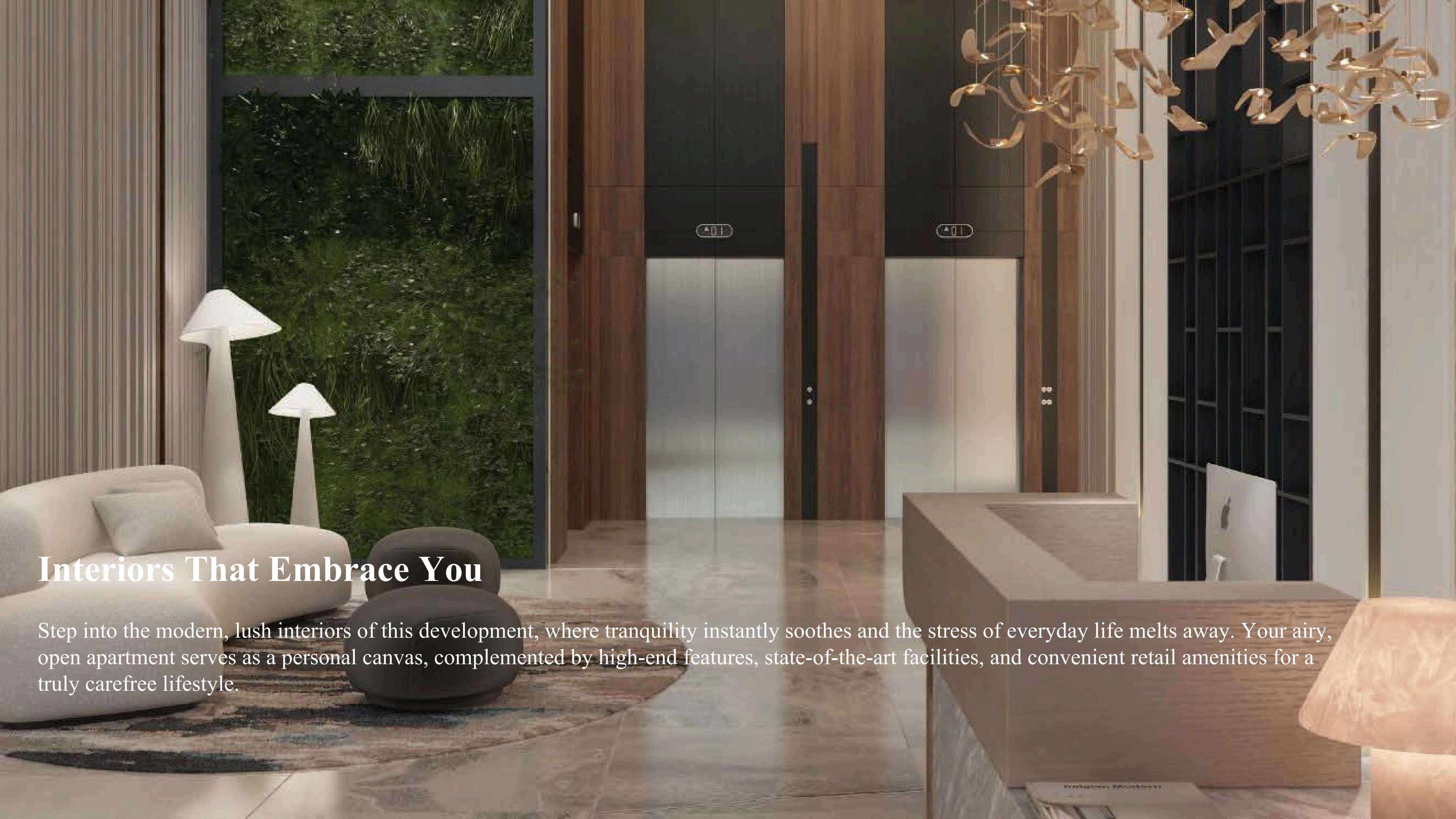
A LIVING SPACE IN PERFECT HARMONY
A HOME THAT MIRRORS WHO YOU ARE



An architectural rendering of a tall, modern skyscraper named Maison Elysée III. The building features a glass facade with a grid-like pattern of windows and balconies. It has two distinctive white, U-shaped architectural elements at the top. The base of the building is a multi-story structure with a glass and metal facade, featuring the name 'MAISON ELYSÉE III' in large letters. The building is surrounded by other city buildings, palm trees, and a green lawn in the foreground. The sky is blue with some clouds.

Flawless Architecture & Design

Our newest, and largest, real estate development to date, the Maison Elysée III structure was designed with the sleek, modern aesthetic that is preferred by many urbanites. When completed, the community will offer 374 residential unit



Interiors That Embrace You

Step into the modern, lush interiors of this development, where tranquility instantly soothes and the stress of everyday life melts away. Your airy, open apartment serves as a personal canvas, complemented by high-end features, state-of-the-art facilities, and convenient retail amenities for a truly carefree lifestyle.



SIZE RANGE PER UNIT TYPE

Studio size ranges from 377.92 sq.ft. to 485.56 sq.ft

1BHK size ranges from 624.09 Sq.ft. to 1258.41 Sq.ft

2BHK size ranges from 709.45 Sq.ft.to 712.47 Sq.ft

A combination of studio, 1, and 2 Bedrooms Apartment. This stylish and sophisticated structure will stand out among the other residences with its clean, crisp lines and meticulous attention to every single architectural detail. A manifestation of sophistication, it entreats passers-by to take a closer look.

With its impeccable design and prime location in the Jumeirah Village Circle, don't be surprised if people stop and stare.

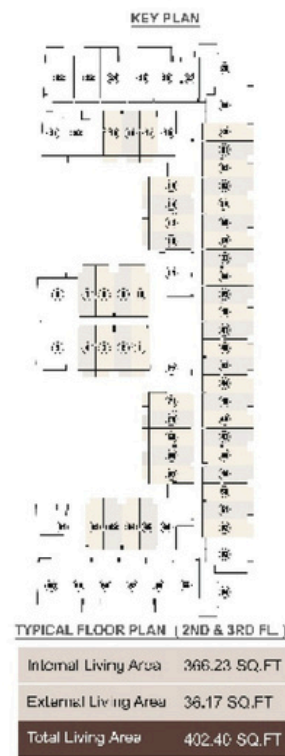
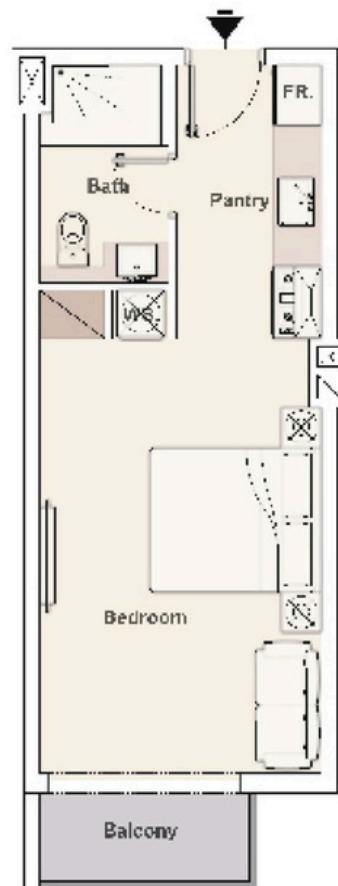


AMENITIES

Immerse yourself and feast your senses to an expressive magnificence. Maison Elysee III is the perfect starting point for a lifestyle of comfort, convenience and heightened luxury that is quintessentially affordable.

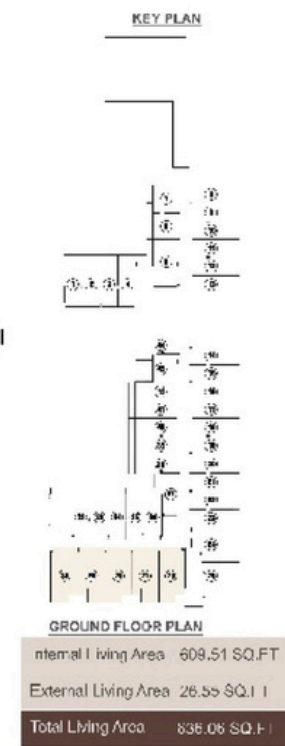
- 24h Security
- Large Swimming pool
- Gym
- Parking Spaces
- Landscape
- Kids Play Area,
- BBQ Area
- Outdoor cinema
- Family sitting area
- Outdoor workout area
- Multipurpose hall
- 30 minutes Maktoum Airport
- 20 minutes EXPO2020 Site





FLOOR PLAN

Studio Type - 1



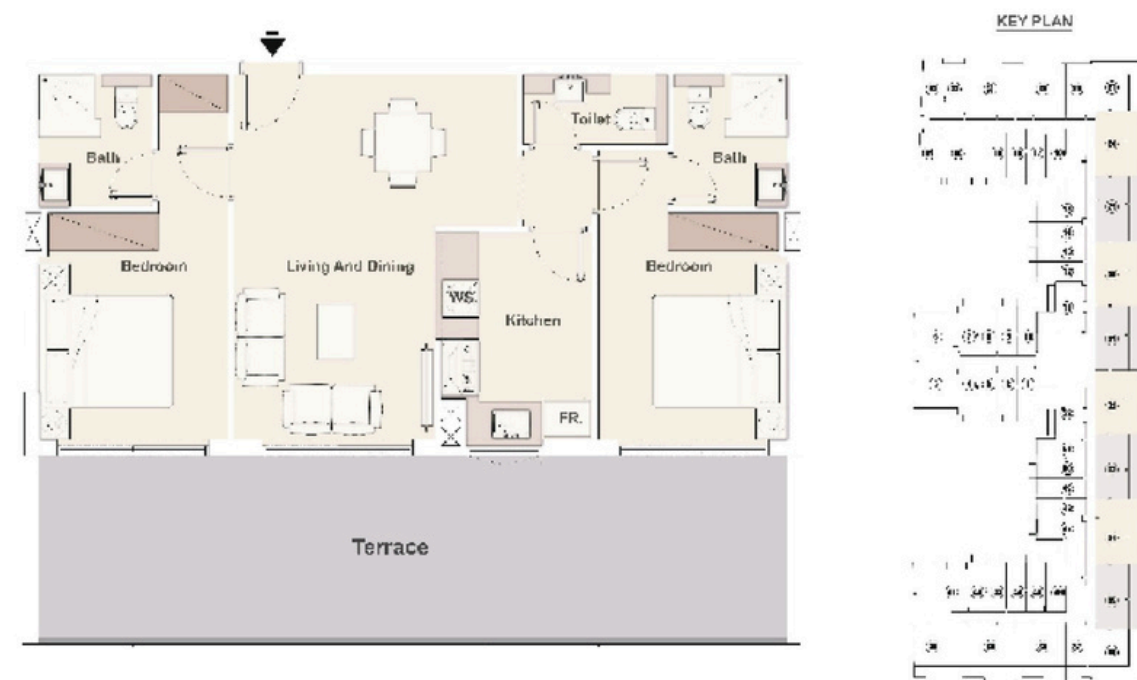
FLOOR PLAN

1 BR - Type 3



FLOOR PLAN

1 BR Type 15



FLOOR PLAN

2 BR Type 3



Where Prestige Meets Property



At Majara Luxury Real Estate L.L.C., we redefine the art of luxury living. Based in the heart of the UAE, we specialize in curating exceptional real estate experiences tailored to the needs of discerning investors, end-users, and global clientele.



With a refined portfolio of premium properties across all seven Emirates, our expertise lies in both off-plan and ready-to-move assets, offering opportunities that blend architectural excellence with investment potential.



We are more than just property consultants & we are partners in your journey to finding the perfect home, investment, or lifestyle. Driven by integrity, market insight, and personalized service, Majara stands as a trusted name in an ever-evolving market.

Contact Us :

Phone: +971564452803

Email: info@majararealestate.com

<https://majararealestate.com/>