

A night-time architectural rendering of a modern high-rise apartment complex. The building features a mix of dark grey and light blue facades, with numerous balconies and large glass windows. Many of the windows and balconies are illuminated from within, showing warm interior lights. The building is situated behind a multi-lane highway with blurred light trails from moving vehicles. In the foreground, there is a landscaped area with green grass, white flowers, and modern street lighting. Other smaller buildings are visible in the background under a dark blue twilight sky.

GRAND

MAJARA LUXURY REAL ESTATE LLC

Head Office Level 36-01, Po Box :124382 , Trade Center 1, Sheikh Zayed Road , Burj Al Salam Tower Dubai UAE

Majara Unveils Grand in Dubai Sports City





Grand, at the heart of Dubai Sports City, offers vibrant living with homes, retail, leisure, and iconic venues like Dubai International Cricket Stadium and Els Golf Club.

An architectural rendering of a modern high-rise apartment building. The building features a base with horizontal slat detailing and multiple upper floors with cantilevered balconies. The balconies have glass railings and some have small potted plants. The ground floor is landscaped with palm trees, other greenery, and a paved walkway. Several people are shown walking and sitting on the lawn, suggesting a vibrant community. The sky is blue with light clouds.

Luxury Homes in a Thriving Neighborhood

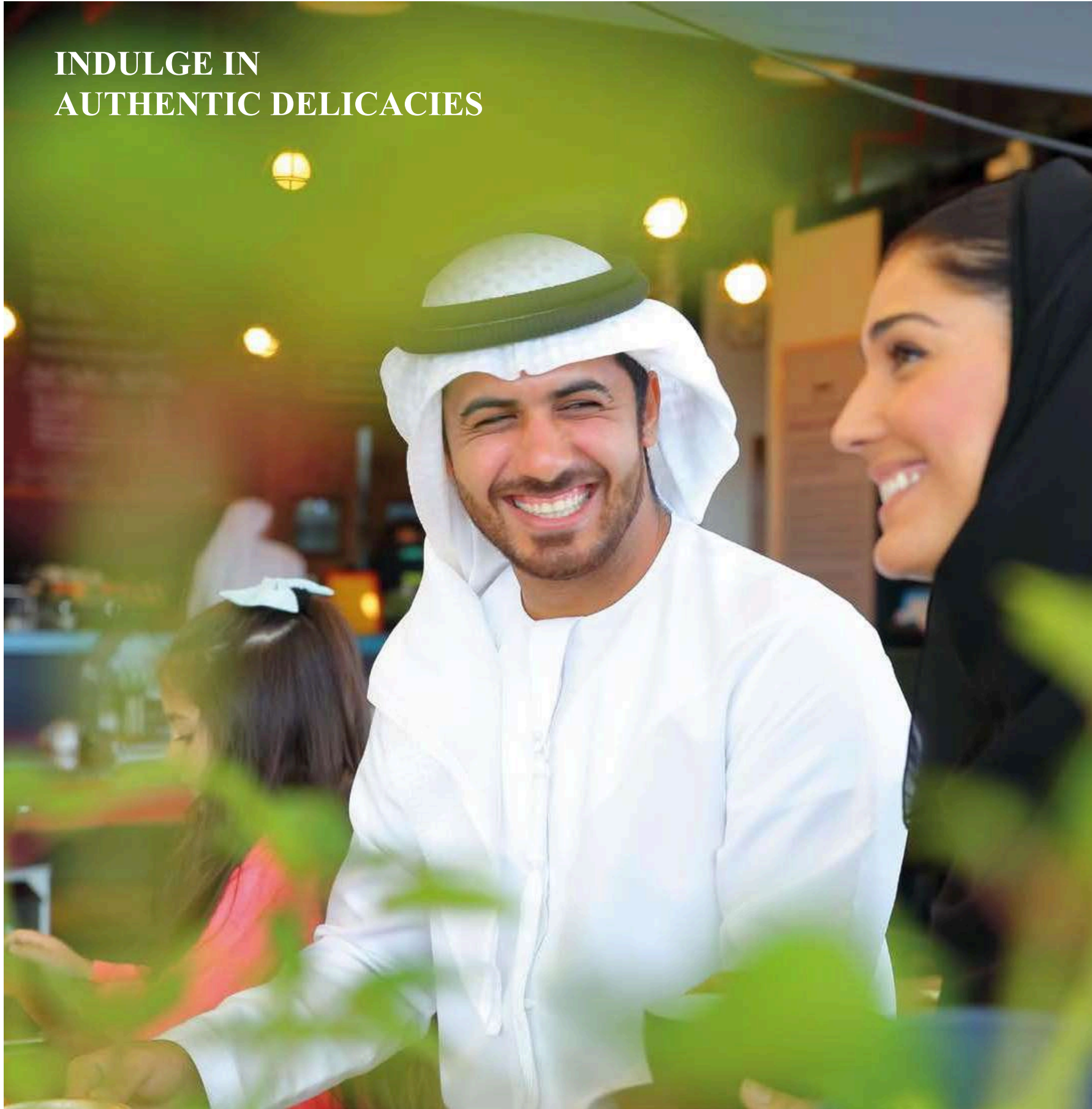
Dubai Sports City inspires a passion for sports, blending modern residential, retail, and recreational facilities. Here, every achievement—on the field or off—is celebrated as part of the journey to excellence.

Claim Your Prestigious Address

Experience upscale living at Grand, surrounded by schools, sports facilities, and endless recreation—your gateway to a vibrant city lifestyle.



**INDULGE IN
AUTHENTIC DELICACIES**



**A NEW REASON TO
GO SHOPPING**



**A GRANDIOSITY ENCOMPASSING
THE BEST OF SUSTAINABILITY & SPORTS**





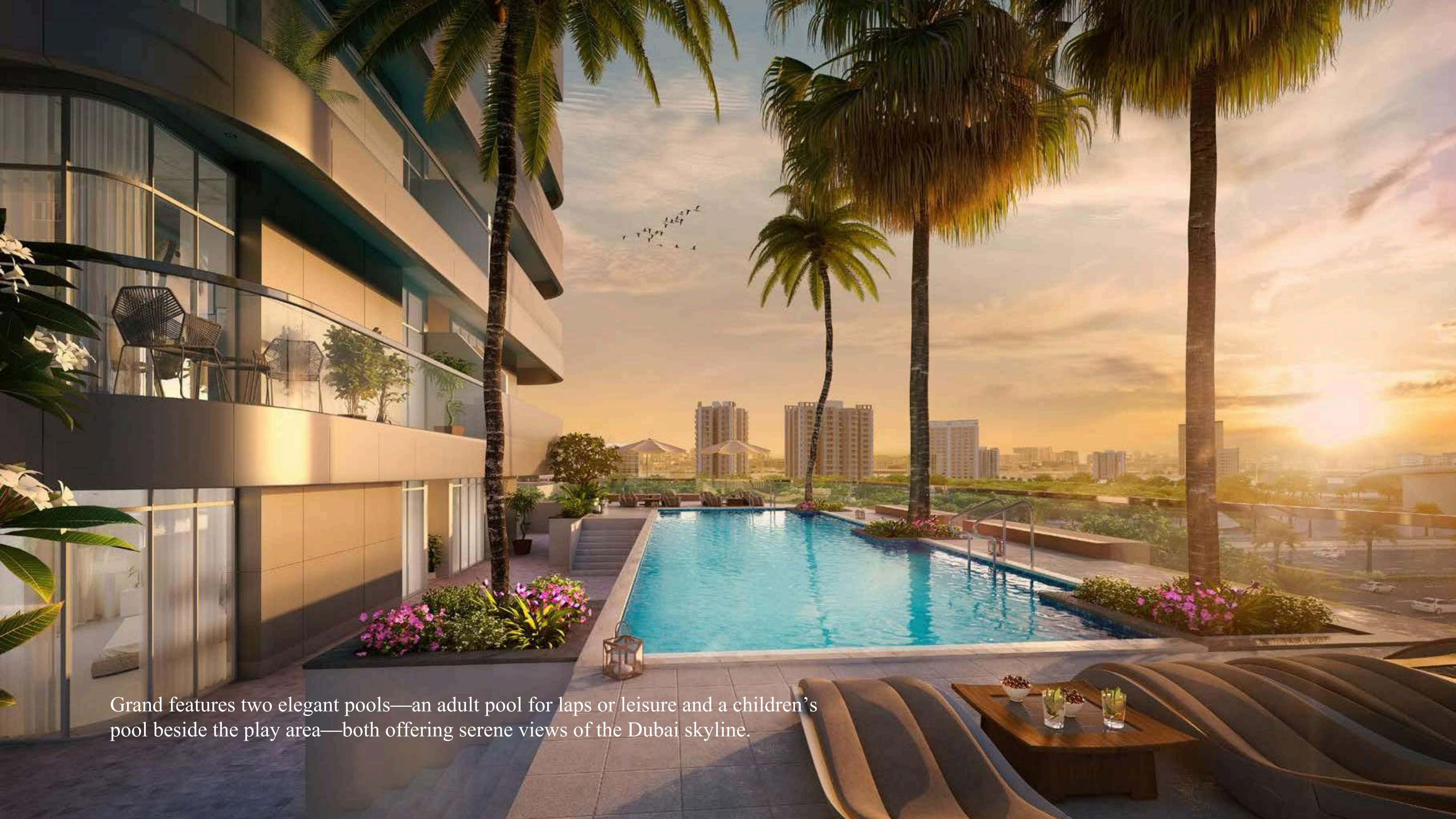
JOGGING TRACK



GOLF COURSE



SPORTS COURT



Grand features two elegant pools—an adult pool for laps or leisure and a children’s pool beside the play area—both offering serene views of the Dubai skyline.





Grand features 431 spacious studios, one- and two-bedroom apartments with full-length balconies and open layouts, allowing for personalized, versatile living.

Every detail is carefully thought out, from the colors to the furniture layout, to make sure nothing gets overlooked.

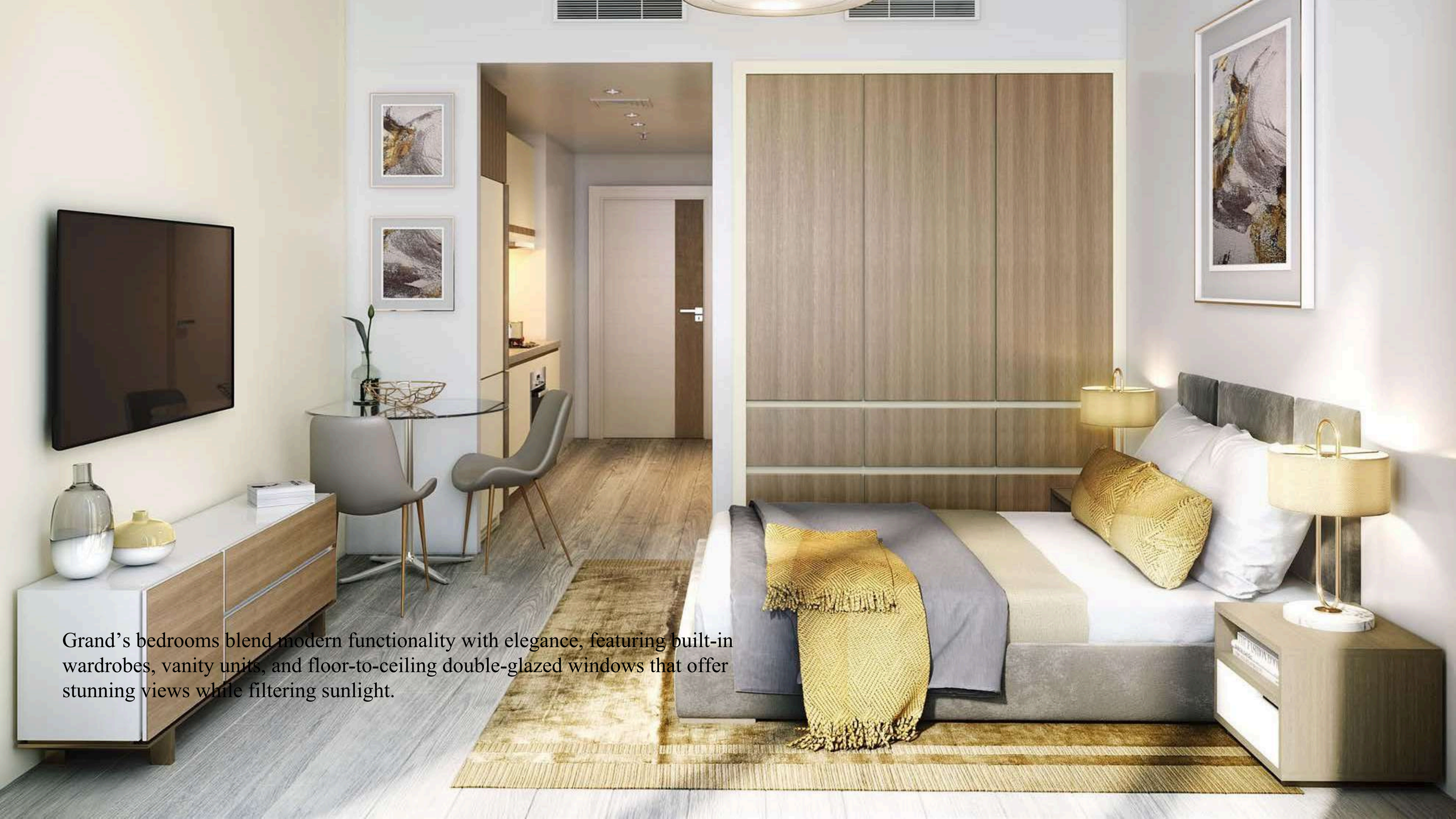


Grand combines glamorous interiors with airy living spaces, double-glazed windows, and sweeping balconies, offering stunning views and a home you'll always look forward to.

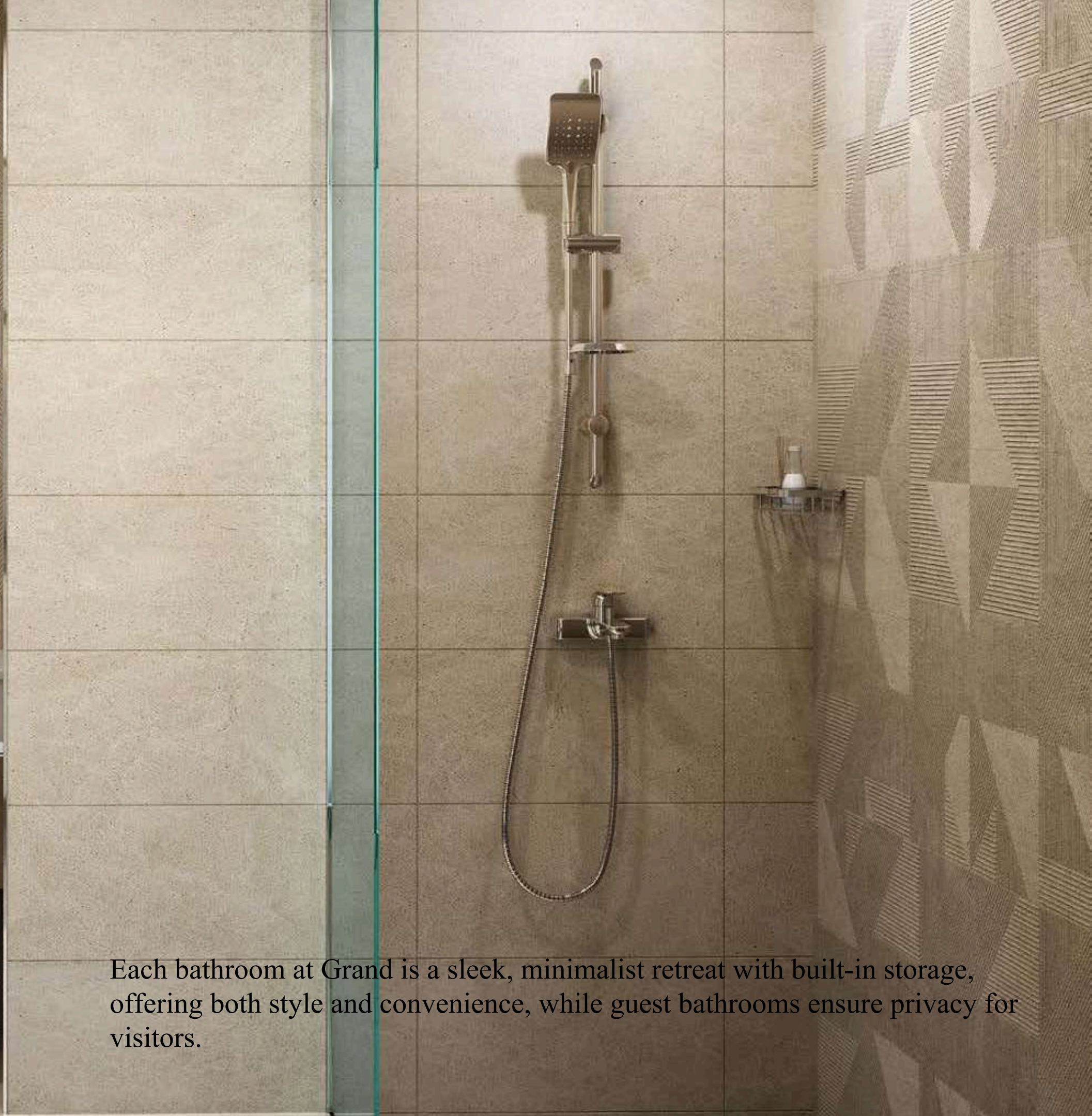




Grand's open-plan kitchens are fully customizable, featuring premium appliances, elegant cabinetry, and spacious countertops—perfect for effortless cooking and entertaining.



Grand's bedrooms blend modern functionality with elegance, featuring built-in wardrobes, vanity units, and floor-to-ceiling double-glazed windows that offer stunning views while filtering sunlight.



Each bathroom at Grand is a sleek, minimalist retreat with built-in storage, offering both style and convenience, while guest bathrooms ensure privacy for visitors.



Spacious balconies that wrap around the entire length of the apartment and overlook the sprawling greens below add to the allure of the destination, making it the perfect venue to unwind after a long day at work or to socialize with friends and family.



FITNESS CENTER

KEY LANDMARKS

1 EQUESTRIAN CLUB
2 minutes
نادي الفروسية
2 دقائق

2 MOHAMMED BIN
ZAYED ROAD
3 minutes
طريق محمد بن زايد
3 دقائق

3 MOTOR CITY &
DUBAI AUTODROME
3 minutes
موتور سيتي و الأوتودروم
3 دقائق

4 DUBAI SPORTS CITY
5 minutes
مدينة دبي الرياضية
5 دقيقة

5 AL KHAIL ROAD
8 minutes
طريق الخيل
8 دقيقة

6 EXPO CITY DUBAI
18 minutes
مدينة إكسبو دبي
18 دقيقة

7 DUBAI MARINA &
BLUEWATERS ISLAND
18 minutes
مارينا دبي وجزيرة بلوواترز
18 دقيقة

8 AL MAKTOUM
INTERNATIONAL AIRPORT
25 minutes
مطار المكتم الدولي
25 دقيقة

9 CITY CENTRE ME'AISEM
10 minutes
المعصرم سيتي سنتر
10 دقائق

10 JUMEIRAH BEACH
20 minutes
شاطئ جميرا
20 دقيقة



FLOOR PLAN

STUDIO TYPE 1

1st to 14th Floor



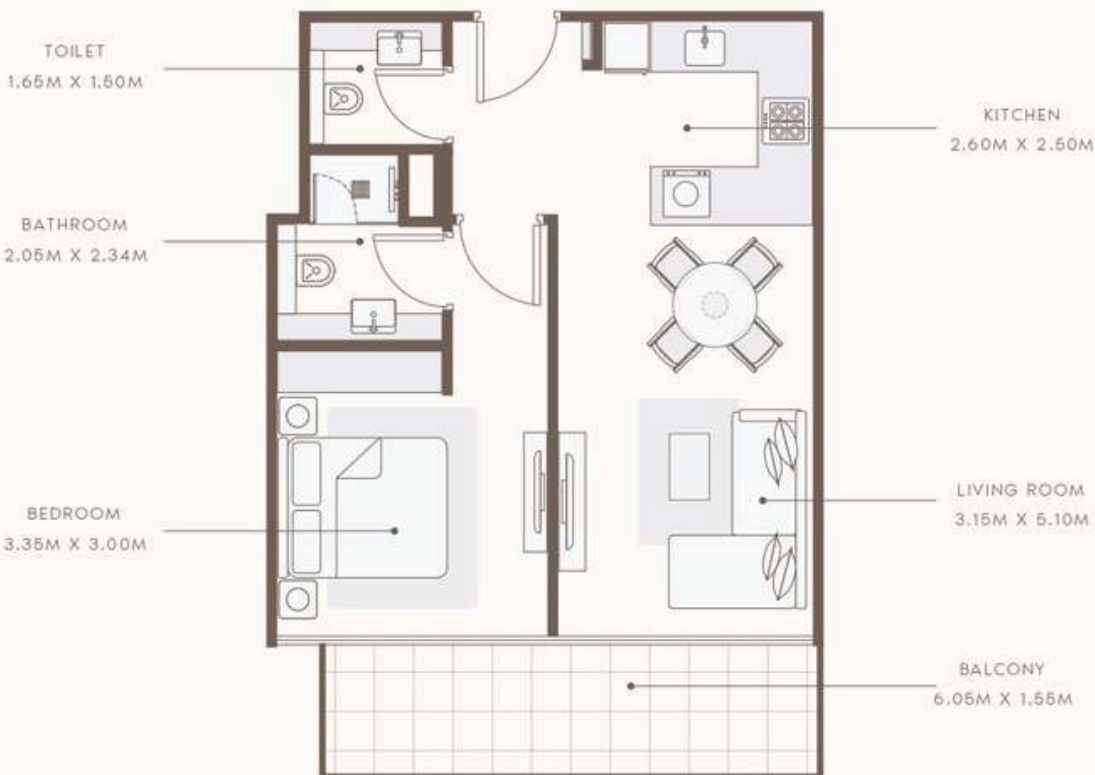
SUITE AREA : 339.81 SQ.FT
TOTAL AREA : 397.41 SQ.FT

TYPICAL UNITS

FLOOR PLAN

1 BEDROOM TYPE 1

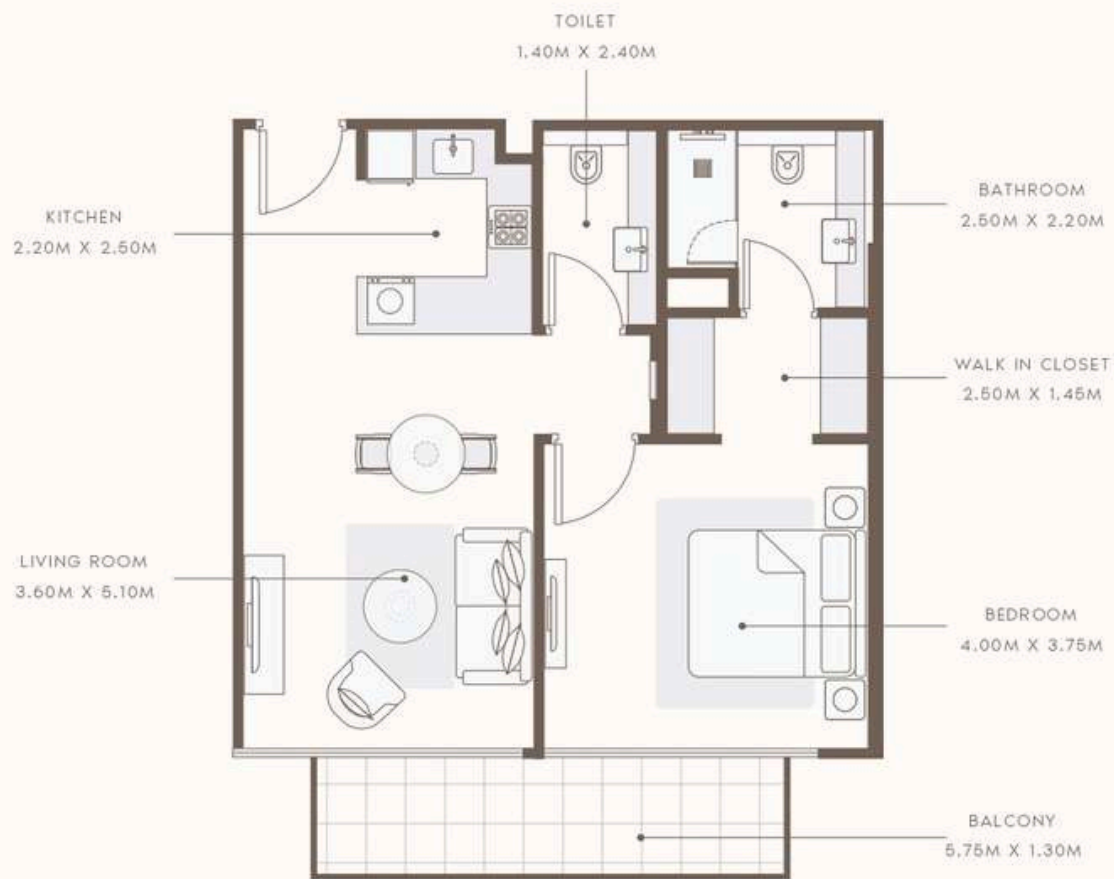
1st to 14th Floor



SUITE AREA : 565.54 SQ.FT
TOTAL AREA : 675.55 SQ.FT

TYPICAL UNITS

FLOOR PLAN
1 BEDROOM TYPE 2
1st to 14th Floor



SUITE AREA : 671.45 SQ.FT
TOTAL AREA : 734.64 SQ.FT

TYPICAL UNITS

FLOOR PLAN
1 BEDROOM TYPE 3
1st to 14th Floor



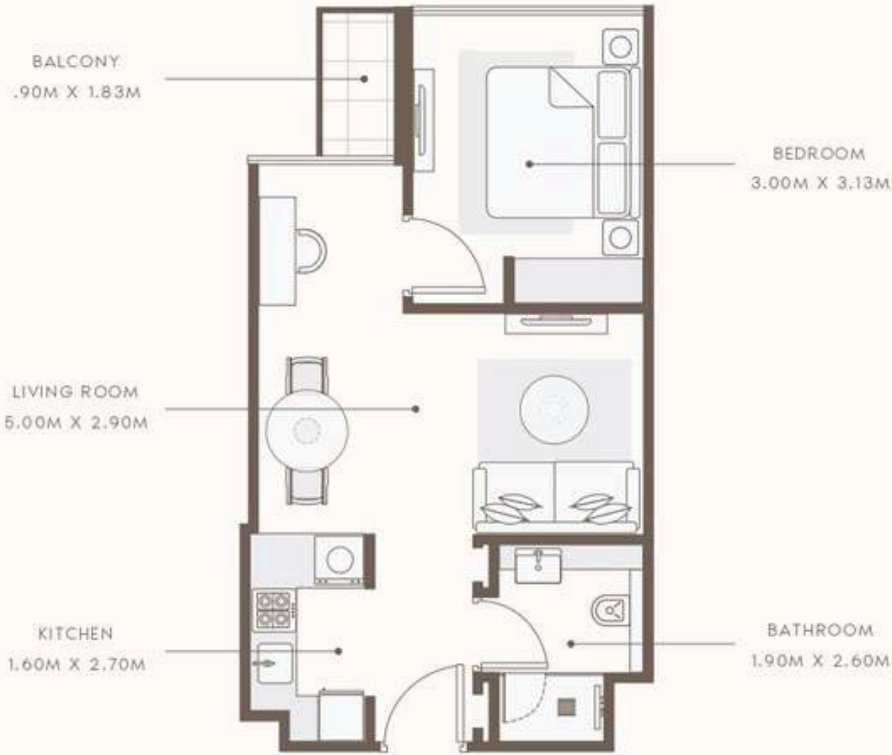
SUITE AREA : 661.66 SQ.FT
TOTAL AREA : 725.39 SQ.FT

TYPICAL UNITS

FLOOR PLAN

1 BEDROOM TYPE 4

1st to 14th Floor



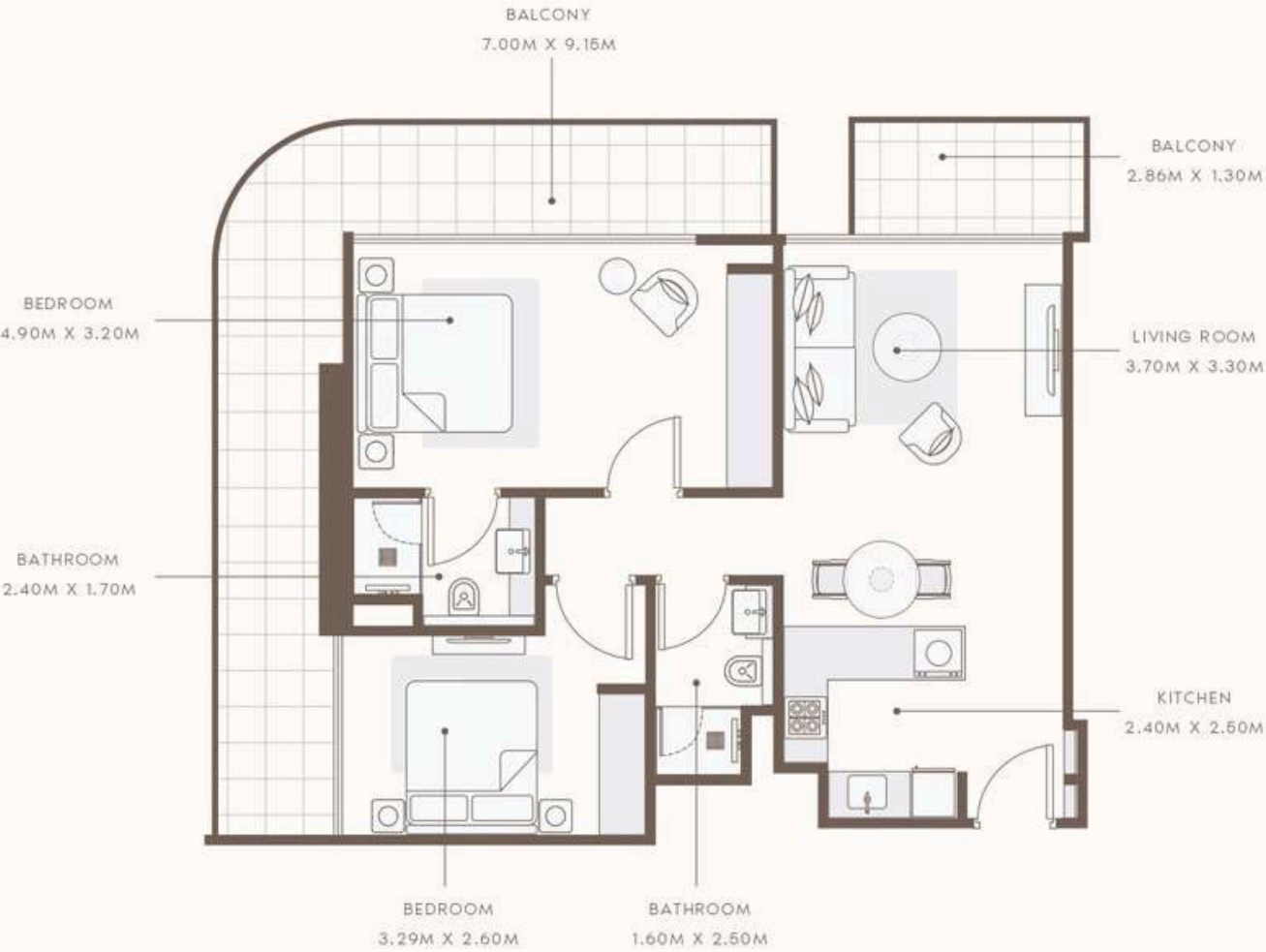
SUITE AREA : 505.80 SQ.FT
TOTAL AREA : 527.65 SQ.FT

TYPICAL UNITS

FLOOR PLAN

2 BEDROOM TYPE 1

1st to 14th Floor



SUITE AREA : 796.53 SQ.FT
TOTAL AREA : 1099.43 SQ.FT

TYPICAL UNITS



Where Prestige Meets Property



At Majara Luxury Real Estate L.L.C., we redefine the art of luxury living. Based in the heart of the UAE, we specialize in curating exceptional real estate experiences tailored to the needs of discerning investors, end-users, and global clientele.



With a refined portfolio of premium properties across all seven Emirates, our expertise lies in both off-plan and ready-to-move assets, offering opportunities that blend architectural excellence with investment potential.



We are more than just property consultants & we are partners in your journey to finding the perfect home, investment, or lifestyle. Driven by integrity, market insight, and personalized service, Majara stands as a trusted name in an ever-evolving market.

Contact Us :

Phone: +971564452803

Email: info@majararealestate.com

<https://majararealestate.com/>