

D A V I D



# MAJARA LUXURY REAL ESTATE LLC

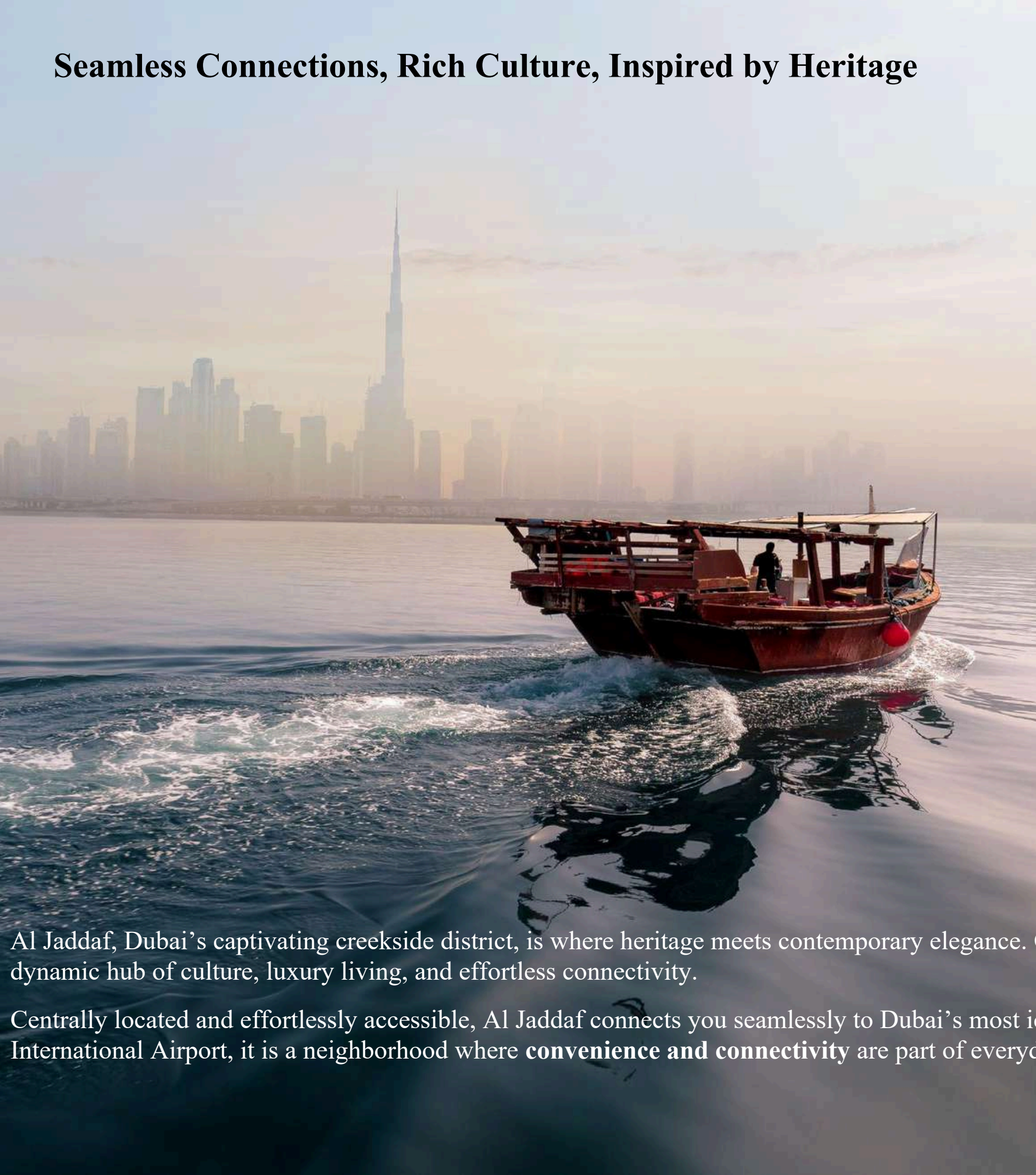
Head Office Level 36-01, Po Box :124382 , Trade Center 1, Sheikh Zayed Road , Burj Al Salam Tower Dubai UAE



Step into a world of elegance with David at Al Jaddaf , presented by Majara.

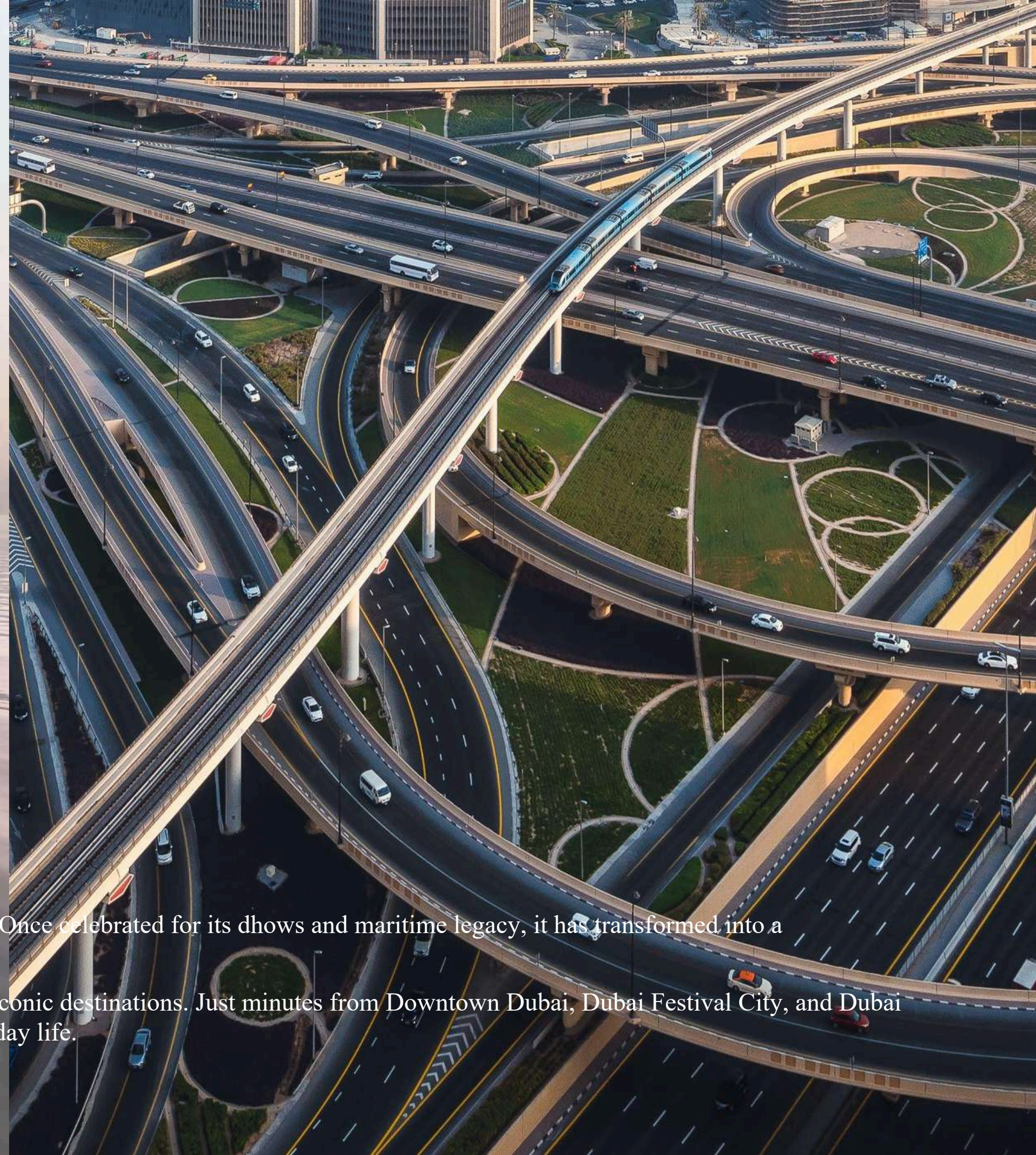


## Seamless Connections, Rich Culture, Inspired by Heritage



Al Jaddaf, Dubai's captivating creekside district, is where heritage meets contemporary elegance. Once celebrated for its dhows and maritime legacy, it has transformed into a dynamic hub of culture, luxury living, and effortless connectivity.

Centrally located and effortlessly accessible, Al Jaddaf connects you seamlessly to Dubai's most iconic destinations. Just minutes from Downtown Dubai, Dubai Festival City, and Dubai International Airport, it is a neighborhood where **convenience and connectivity** are part of everyday life.





# The Heart of Dubai Creekside Living



Al Jaddaf is a vibrant neighborhood that brings together professionals, families, and creatives, blending modern convenience with rich cultural heritage. From quiet residential avenues to bustling waterfront promenades, the district thrives on a lively, welcoming community spirit. David embodies this essence, offering residences that exude creek side charm, contemporary elegance, and an unmistakable energy.



An architectural rendering of a modern high-rise residential building at dusk. The central tower is the focal point, featuring a series of cantilevered balconies with glass railings, some of which have small potted plants. The building's facade is a mix of light-colored panels and dark, vertical slats. To the left is a shorter, more uniform building, and to the right is another tall building with a curved facade. The ground floor of the central building has a modern, wavy, metallic-looking entrance canopy. Below it, there are storefronts for 'BOOK TO', 'LIVIN', 'COFFEE', and 'A PAPER CUP'. The sky is a deep blue with a crescent moon in the upper right. The overall atmosphere is sophisticated and contemporary.

## A Distinguished Residence

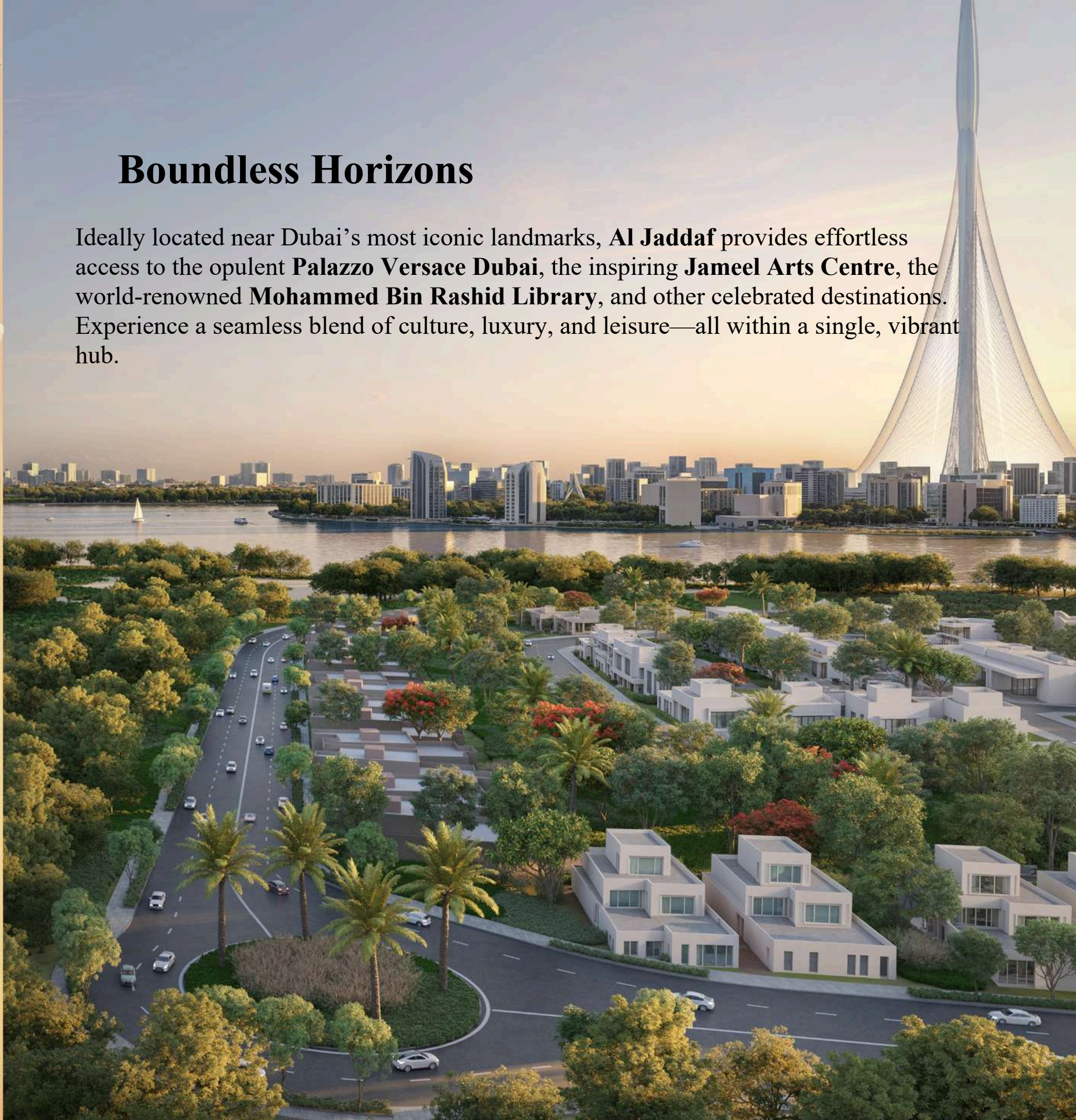
Rising elegantly along the Dubai Creek, David offers a collection of refined residences tailored to every lifestyle. From contemporary studios and generously sized one- and two-bedroom apartments to two exclusive penthouses atop the tower, each home combines **modern sophistication with creek side luxury**





## Boundless Horizons

Ideally located near Dubai's most iconic landmarks, **Al Jaddaf** provides effortless access to the opulent **Palazzo Versace Dubai**, the inspiring **Jameel Arts Centre**, the world-renowned **Mohammed Bin Rashid Library**, and other celebrated destinations. Experience a seamless blend of culture, luxury, and leisure—all within a single, vibrant hub.





# A Balanced Selection

Enjoy a **carefully curated selection of world-class retail and dining experiences**. Whether it's your favorite boutique, a signature restaurant, or a charming neighborhood café, everything you love is just steps away. From **fine dining to casual bites**, and from **luxury shopping to everyday essentials**, convenience and indulgence come together seamlessly at your doorstep.





## Redefining the Art of Retail and Dining



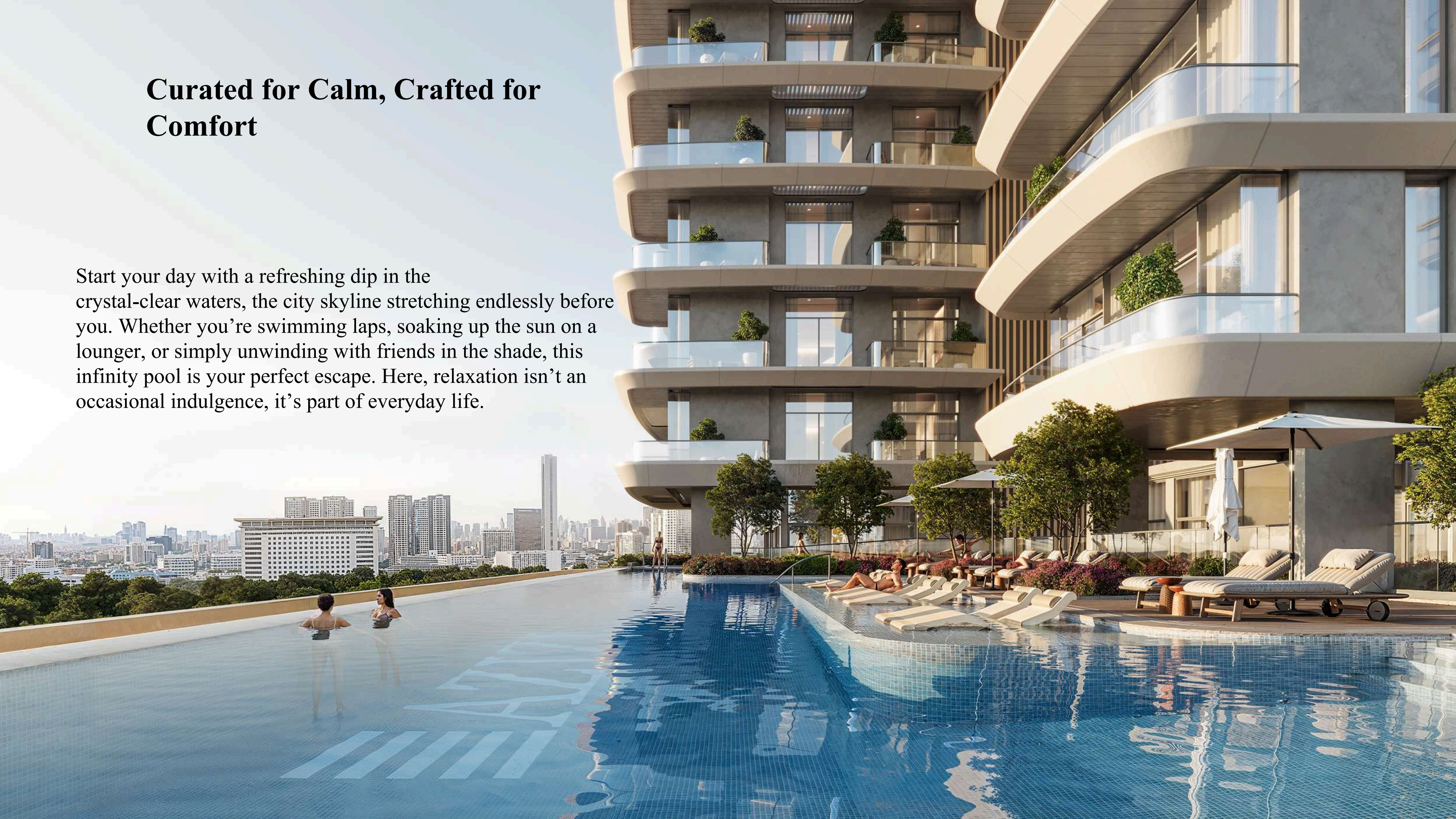
From the aroma of freshly brewed coffee to the richness of decadent desserts, every moment here is a celebration of flavor. **Savor gourmet dining, enjoy a leisurely brunch in a sunlit café, or pick up a quick, delicious bite**—every craving is effortlessly within reach.



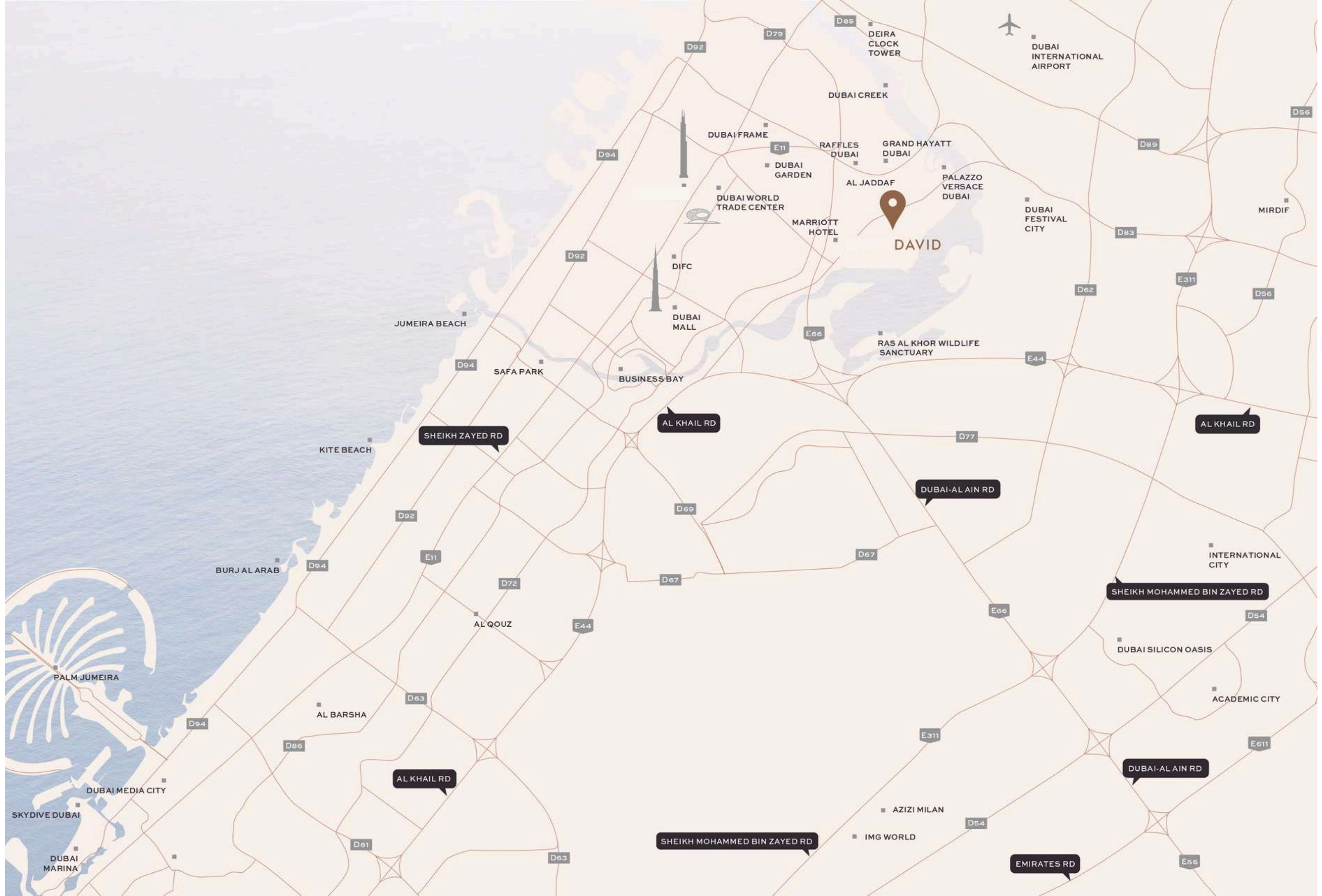


# Curated for Calm, Crafted for Comfort

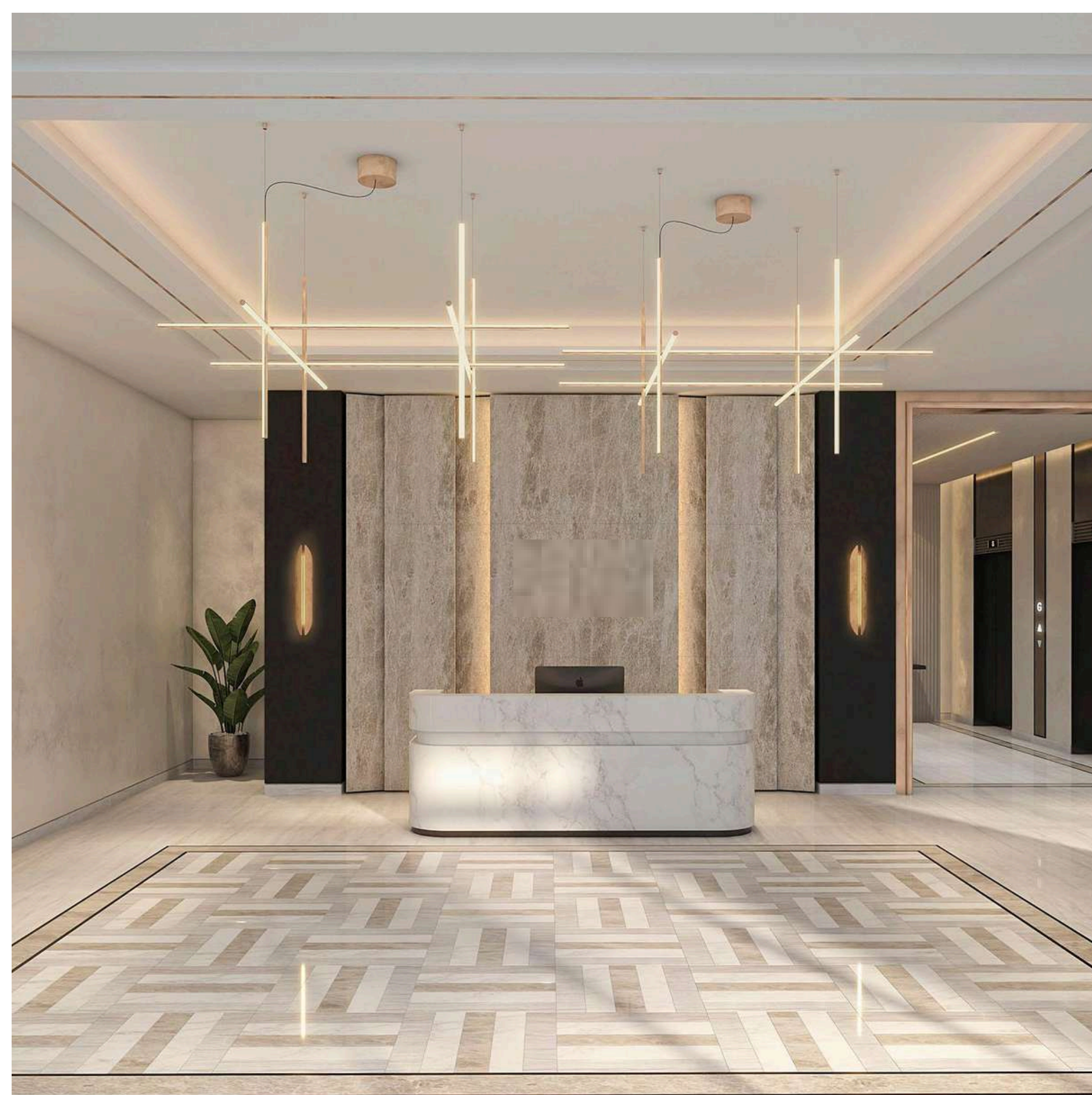
Start your day with a refreshing dip in the crystal-clear waters, the city skyline stretching endlessly before you. Whether you're swimming laps, soaking up the sun on a lounger, or simply unwinding with friends in the shade, this infinity pool is your perfect escape. Here, relaxation isn't an occasional indulgence, it's part of everyday life.



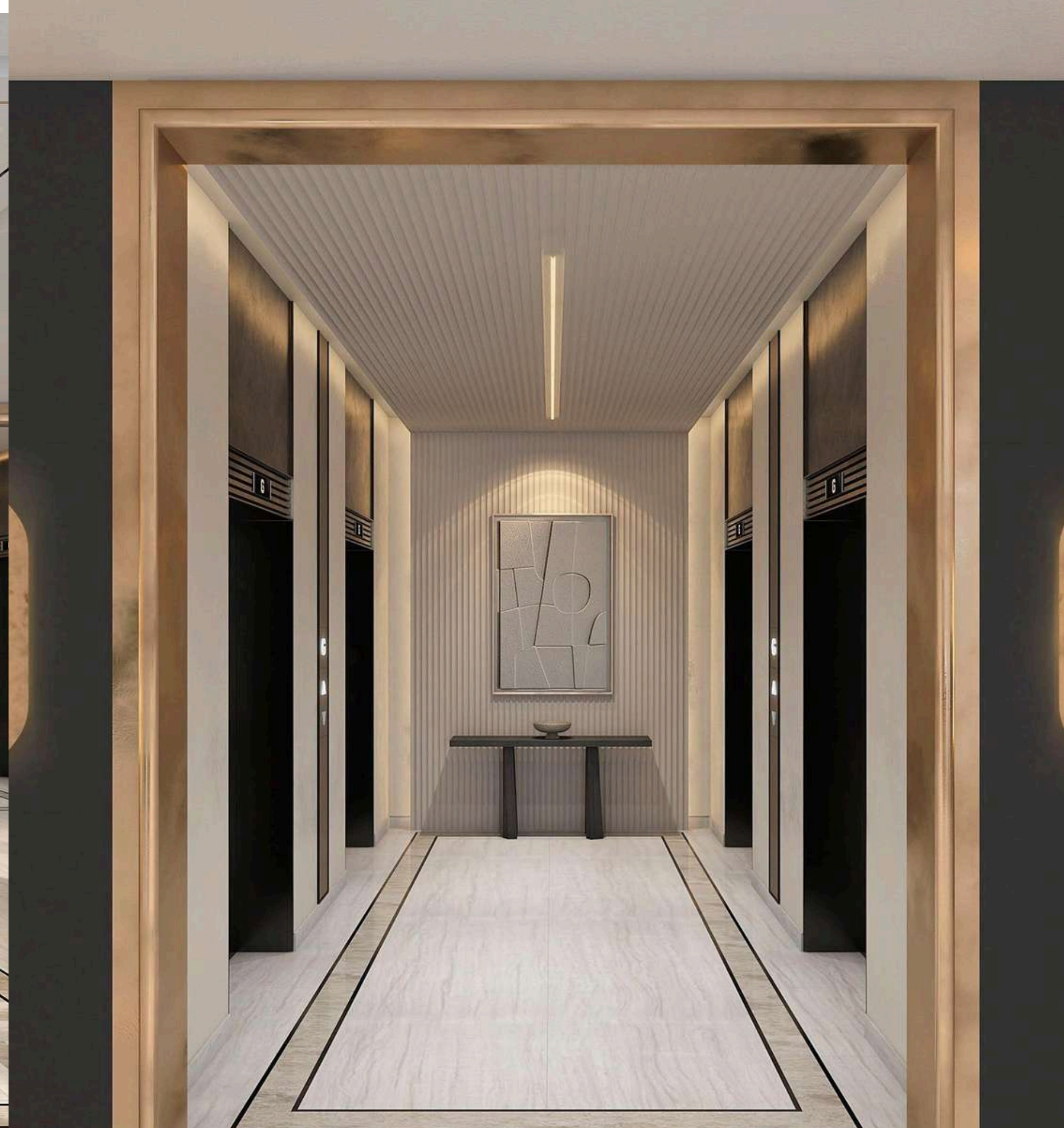








RECEPTION



LOBBY





LOUNGE





With breathtaking city views at sunset, your home seamlessly blends an open-concept marble kitchen and inviting lounge, creating the perfect setting for every moment—from morning coffee to evening wine and leisurely weekend brunches.





# BEDROOM

Inside your private retreat, calm and warmth radiate through every detail, shaping the ideal haven. It uplifts your mornings and restores your energy at day's end.





BATHROOM



RESTROOM





GYM

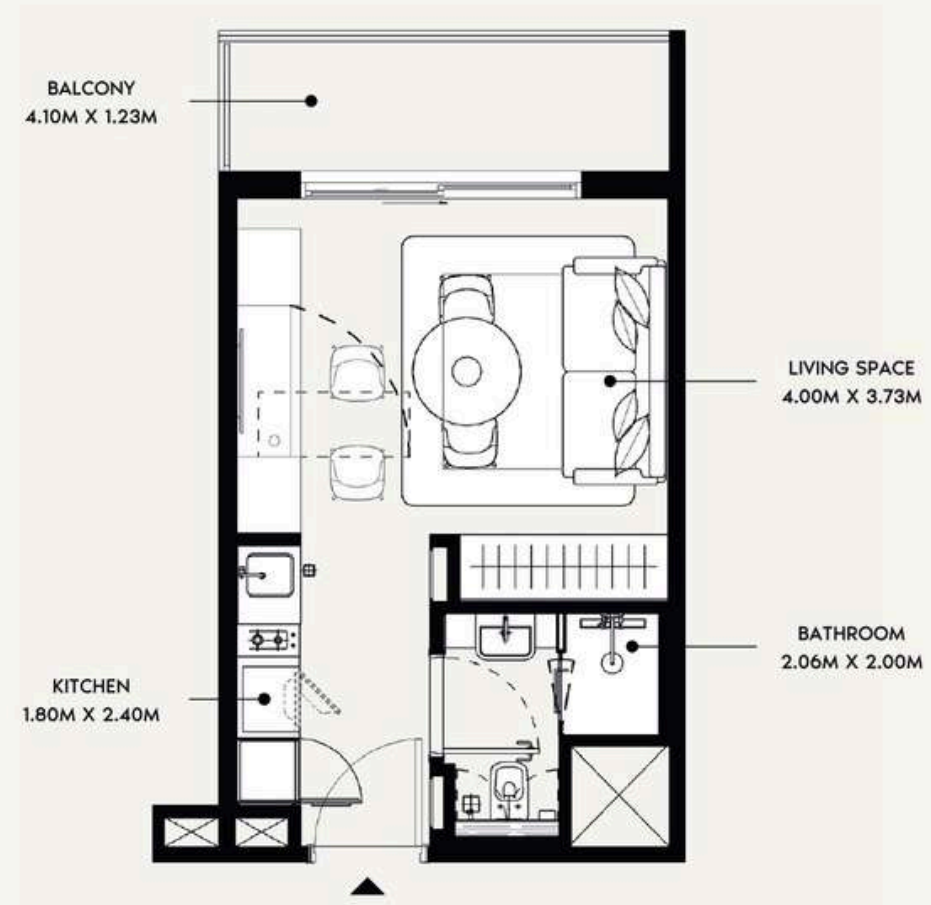


KID'S  
PLAYROOM



DAVID - FLOOR PLAN

**STUDIO TYPE 1**  
11TH TO 13TH FLOORS

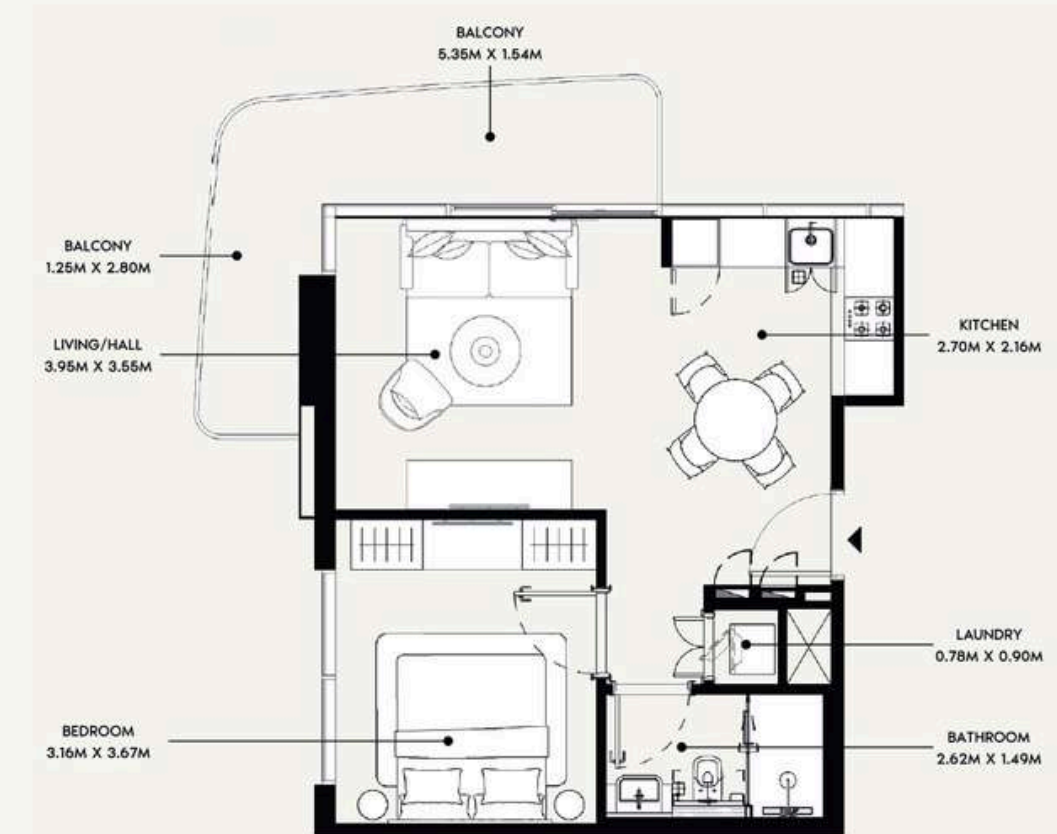


SUITE AREA : 262.96 SQ.FT.  
TOTAL AREA : 326.26 SQ.FT.

TYPICAL UNITS

DAVID - FLOOR PLAN

**1 BEDROOM TYPE 1**  
2ND TO 10TH FLOORS



SUITE AREA : 523.67 SQ.FT.  
TOTAL AREA : 650.36 SQ.FT.

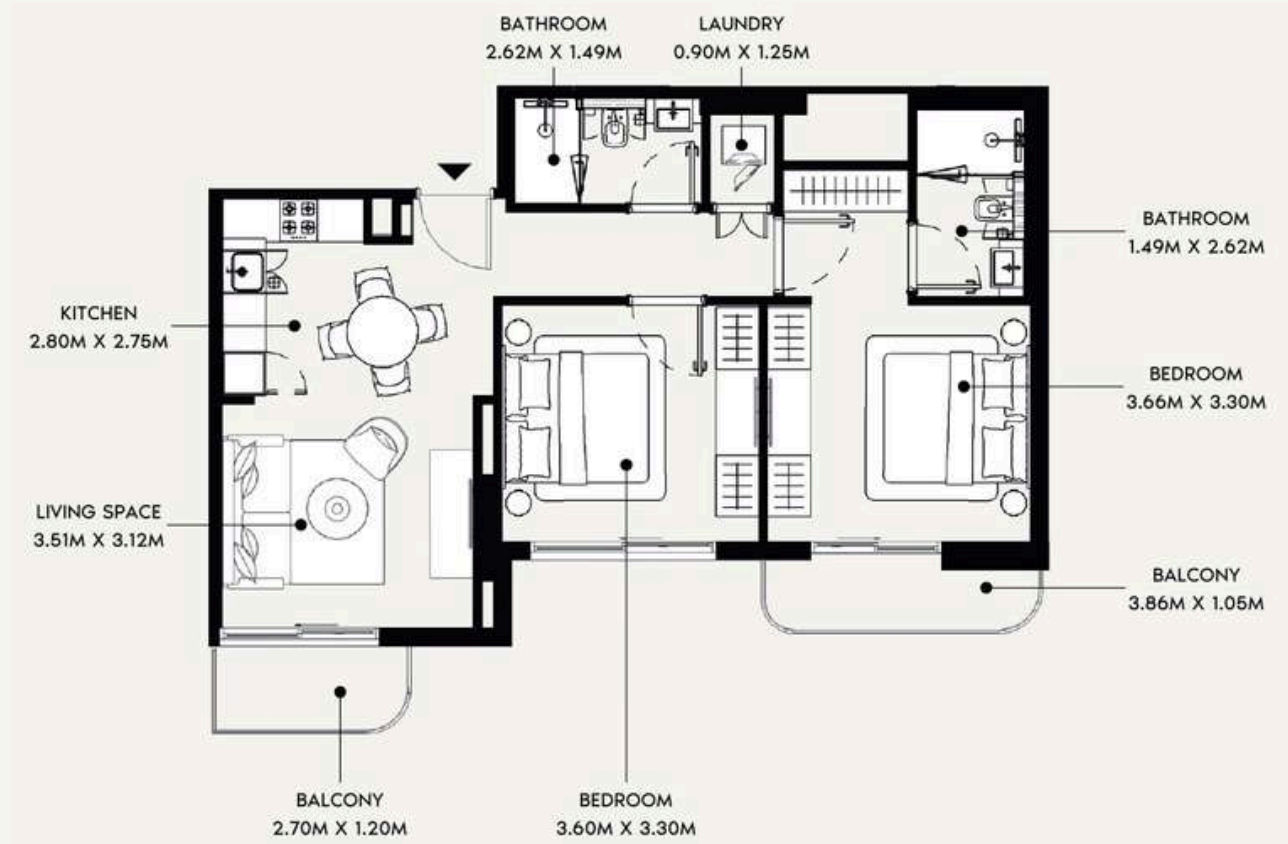
TYPICAL UNITS



DAVID - FLOOR PLAN

**2 BEDROOM** TYPE 1

2ND TO 10TH FLOORS



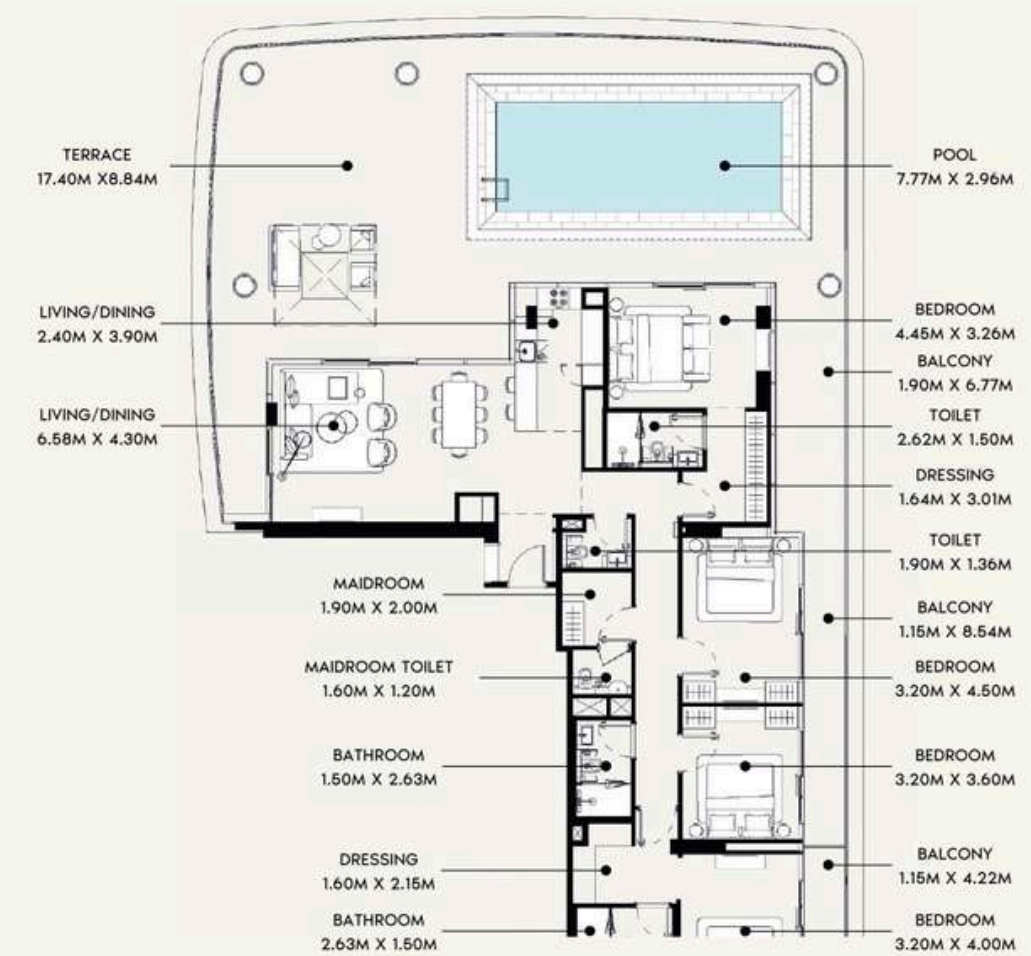
SUITE AREA : 757.79 SQ.FT.  
TOTAL AREA : 843.04 SQ.FT.

TYPICAL UNITS

DAVID - FLOOR PLAN

**PENTHOUSE** TYPE 1

ROOF FLOOR



SUITE AREA : 1,683.49 SQ.FT.  
TOTAL AREA : 3,474.73 SQ.FT.

TYPICAL UNITS





## Where Prestige Meets Property



At Majara Luxury Real Estate L.L.C., we redefine the art of luxury living. Based in the heart of the UAE, we specialize in curating exceptional real estate experiences tailored to the needs of discerning investors, end-users, and global clientele.



With a refined portfolio of premium properties across all seven Emirates, our expertise lies in both off-plan and ready-to-move assets, offering opportunities that blend architectural excellence with investment potential.



We are more than just property consultants & we are partners in your journey to finding the perfect home, investment, or lifestyle. Driven by integrity, market insight, and personalized service, Majara stands as a trusted name in an ever-evolving market.

### Contact Us :

**Phone: +971564452803**

**Email: [info@majararealestate.com](mailto:info@majararealestate.com)**

**<https://majararealestate.com/>**