

CREEK VIEWS



# MAJARA LUXURY REAL ESTATE LLC

Head Office Level 36-01, Po Box :124382 , Trade Center 1, Sheikh Zayed Road , Burj Al Salam Tower Dubai UAE

Majara Presents Creek Views at Dubai Sports City



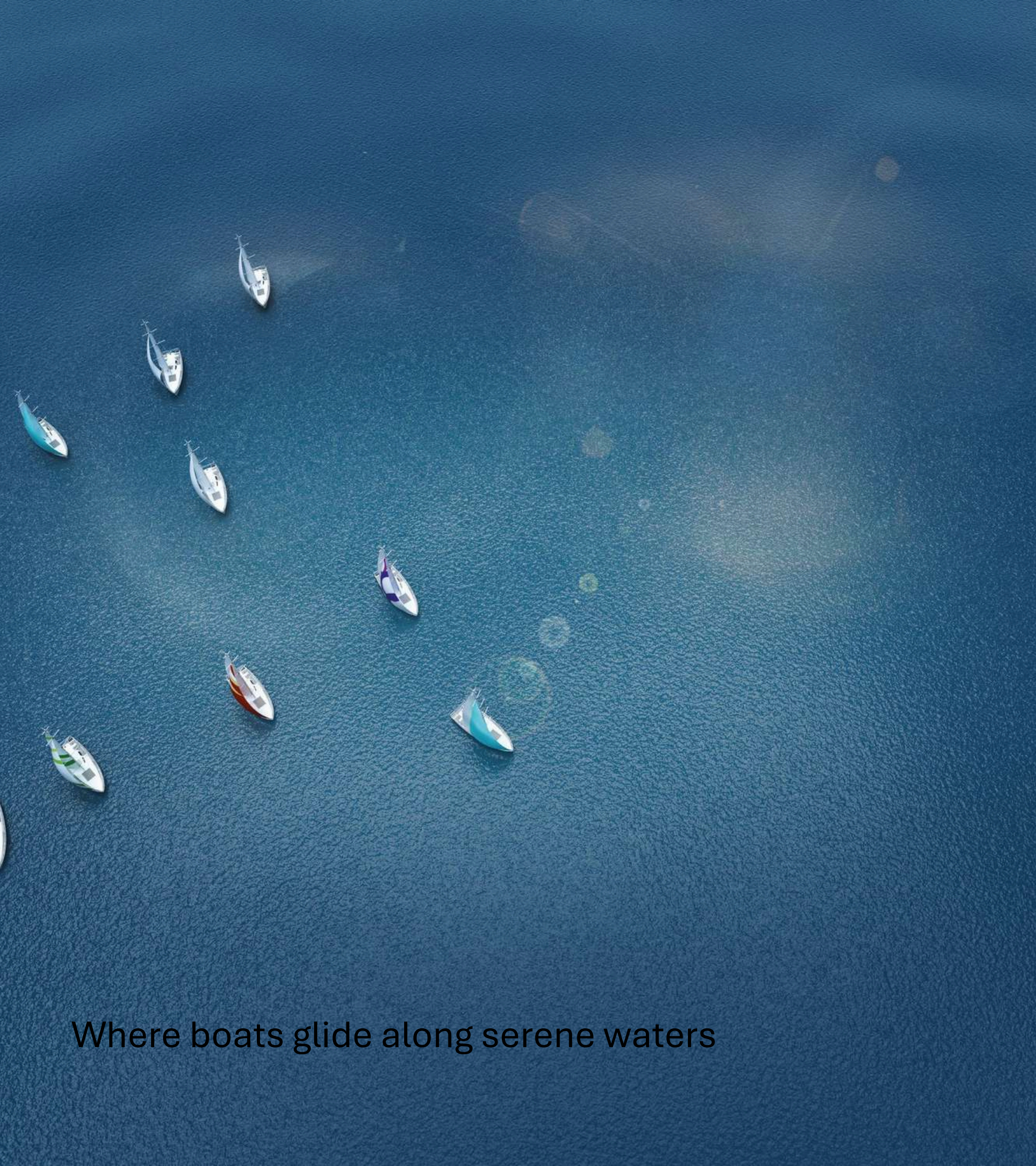


Dubai Healthcare City, located on the iconic Dubai Creek, is the city's premier health and wellness destination, offering residents a wealth of lifestyle and wellness essentials.





Luxury defined by seamless connectivity and serene  
ambiance.



Where boats glide along serene waters



Creek Views, comprising Creek Views I, II, and III marks the city's new benchmark for modernism. Overlooking the breathtaking Dubai Creek and the beautiful Dubai skyline, Creek Views offers unmatched panoramic excellence





Creek Views III is the new addition to Creek Views in the heart of Dubai Healthcare City. Blending in modern life with a nature-friendly lifestyle, Creek Views III is where your quest for the perfect home finds an answer.







The building features a total of 290 units including studios, one-bedroom, two-bedroom, and three-bedroom apartments, along with other lifestyle-centered amenities.





Creek Views III is home to a lively social area, a BBQ area, a yoga area, and a kids' play area plus a Sauna & Steam, a gym, and two rejuvenating pools. The panoramic elevator adds to the exuberant experience of everyday living with great convenience.





Nestled on the iconic Dubai creek in the heart of healthcare city, to wake you up to all that matters.





Surround Yourself with  
picture -perfect views





Rising up 18 impressive storeys ,  
Creek Views is the new benchmark  
for convenience , practicality ,  
and modernism





**EXCELLENT CONNECTIVITY TO  
DUBAI ' S MOST ICONIC LANDMARKS**



With 587 comfortable residential units, including 116 studios, 436 one-bedroom apartments and 35 two-bedroom apartments, Creek Views is elegantly designed with ultra-modern finishings and spectacular, contemporary interior artistry





















KIDS PLAY AREA



GYM







## KEY LANDMARKS

### المعالم الرئيسية

- |  |   |  |
|--|---|--|
| 1 DUBAI CREEK /<br>AL KHAIL ROAD<br>1 minute<br>خور دبي / شارع الخيل<br>دقيقة 1    | 5 PALAZZO VERSACE HOTEL<br>7 minutes<br>فندق فرساتشي<br>دقائق 12                                      | 9 BUSINESS BAY / DIFC<br>10 minutes<br>مركز دبي المالي العالمي /<br>الخليج التجاري<br>دقائق 10 |
| 2 DUBAI INT. AIRPORT<br>9 minutes<br>مطار دبي الدولي<br>دقائق 9                    | 6 SHEIKH ZAYED ROAD<br>5 minutes<br>شارع شيخ زايد<br>دقائق 5  | 10 FESTIVAL CITY / IKEA<br>8 minutes<br>فستيفال سيتي / إيكيا<br>دقائق 8                        |
| 3 WAFI MALL<br>5 minutes<br>وافي مول<br>دقائق 5                                    | 7 AL JADDAF WATERFRONT<br>8 minutes<br>الجدا ف ووتر فرونت<br>دقائق 8                                  | 11 BLUEWATERS<br>23 minutes<br>بلو واترز<br>دقيقة 23   |
| 4 DOWNTOWN DUBAI / DUBAI MALL<br>10 minutes<br>وسط مدينة دبي / دبي مول<br>دقائق 10 | 8 DUBAI HEALTHCARE CITY /<br>METRO STATION<br>3 minutes<br>محطة مترو /<br>مدينة دبي الطبية<br>دقائق 3 |  |





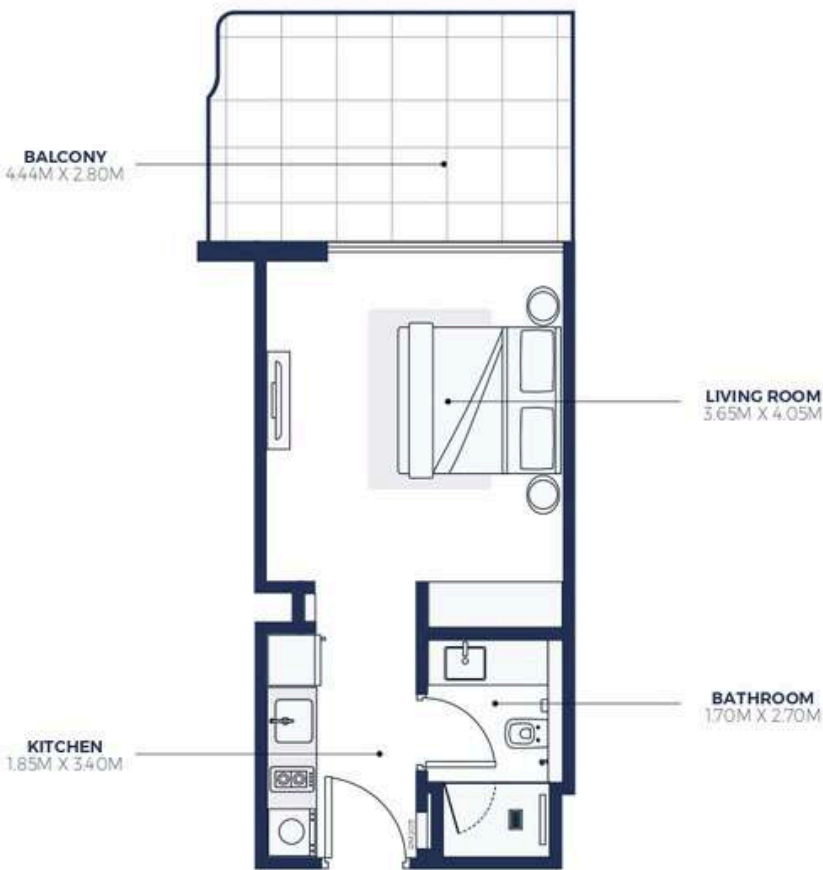
FLOORPLAN  
**STUDIO** TYPE 1  
2nd to 19th Floor



SUITE AREA: 313.37 SQ.FT  
TOTAL AREA: 366.30 SQ.FT

TYPICAL UNITS

FLOORPLAN  
**STUDIO** TYPE 1A  
2nd Floor



SUITE AREA: 318.29 SQ.FT  
TOTAL AREA: 457.57 SQ.FT

TYPICAL UNITS





FLOORPLAN  
**STUDIO** TYPE 1B  
2nd Floor



SUITE AREA: 318.50 SQ.FT  
TOTAL AREA: 375.01 SQ.FT

TYPICAL UNITS

FLOORPLAN  
**STUDIO** TYPE 1C  
1st Floor



SUITE AREA: 317.86 SQ.FT  
TOTAL AREA: 476.52 SQ.FT

TYPICAL UNITS

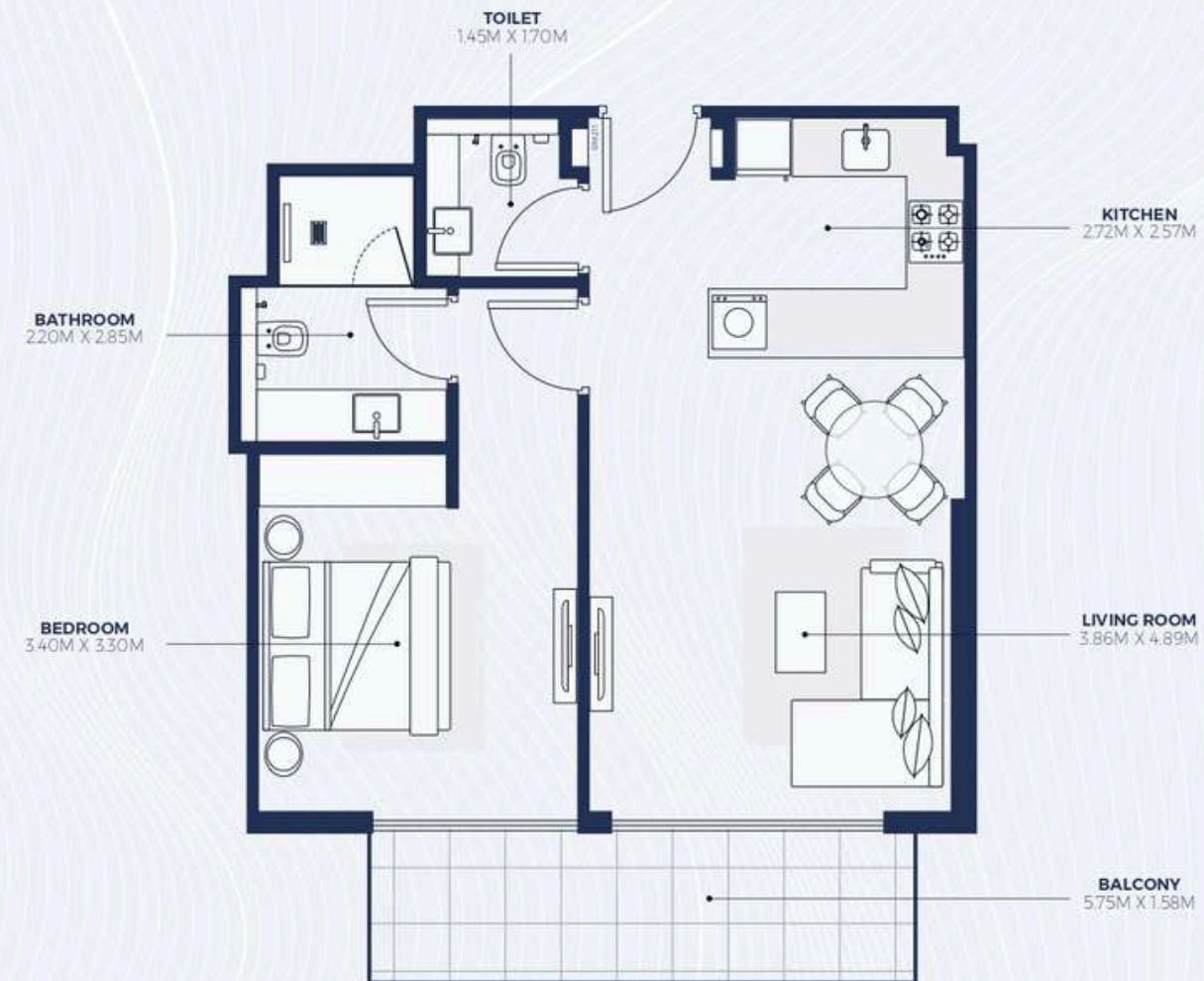




FLOORPLAN

**1 BEDROOM** TYPE 1

2nd to 19th Floor



SUITE AREA: 628.72 SQ.FT  
TOTAL AREA: 732.70 SQ.FT

TYPICAL UNITS

FLOORPLAN

**1 BEDROOM** TYPE 1A

3rd to 8th Floor



SUITE AREA: 623.77 SQ.FT  
TOTAL AREA: 727.43 SQ.FT

TYPICAL UNITS





FLOORPLAN

**1 BEDROOM** TYPE 1B  
2nd Floor



SUITE AREA: 628.72 SQ. FT  
TOTAL AREA: 899.44 SQ. FT

TYPICAL UNITS

FLOORPLAN

**1 BEDROOM** TYPE 1C  
2nd Floor



SUITE AREA: 624.52 SQ. FT  
TOTAL AREA: 854.12 SQ. FT

TYPICAL UNITS





FLOORPLAN  
**2 BEDROOM** TYPE 1  
2nd to 19th Floor



SUITE AREA: 948.73 SQ.FT  
TOTAL AREA: 1068.97 SQ.FT

TYPICAL UNITS

FLOORPLAN  
**2 BEDROOM** TYPE 1A  
2nd Floor



SUITE AREA: 947.01 SQ.FT  
TOTAL AREA: 1068.87 SQ.FT

TYPICAL UNITS





FLOORPLAN  
**2 BEDROOM** TYPE 1B  
1st Floor



SUITE AREA: 948.30 SQ.FT  
TOTAL AREA: 1452.06 SQ.FT

TYPICAL UNITS

FLOORPLAN  
**3 BEDROOM** TYPE 1  
17th to 19th Floor



SUITE AREA: 1634.19 SQ.FT  
TOTAL AREA: 2063.67 SQ.FT

TYPICAL UNITS





FLOORPLAN

3 BEDROOM TYPE 1A  
1st Floor



SUITE AREA: 1629.99 SQ.FT  
TOTAL AREA: 2267.65 SQ.FT

TYPICAL UNITS

FLOORPLAN

3 BEDROOM TYPE 2  
17th to 19th Floor



SUITE AREA: 1615.25 SQ.FT  
TOTAL AREA: 1838.92 SQ.FT

TYPICAL UNITS





## Where Prestige Meets Property



At Majara Luxury Real Estate L.L.C., we redefine the art of luxury living. Based in the heart of the UAE, we specialize in curating exceptional real estate experiences tailored to the needs of discerning investors, end-users, and global clientele.



With a refined portfolio of premium properties across all seven Emirates, our expertise lies in both off-plan and ready-to-move assets, offering opportunities that blend architectural excellence with investment potential.



We are more than just property consultants & we are partners in your journey to finding the perfect home, investment, or lifestyle. Driven by integrity, market insight, and personalized service, Majara stands as a trusted name in an ever-evolving market.

### Contact Us :

**Phone: +971564452803**

**Email: [info@majararealestate.com](mailto:info@majararealestate.com)**

**<https://majararealestate.com/>**