

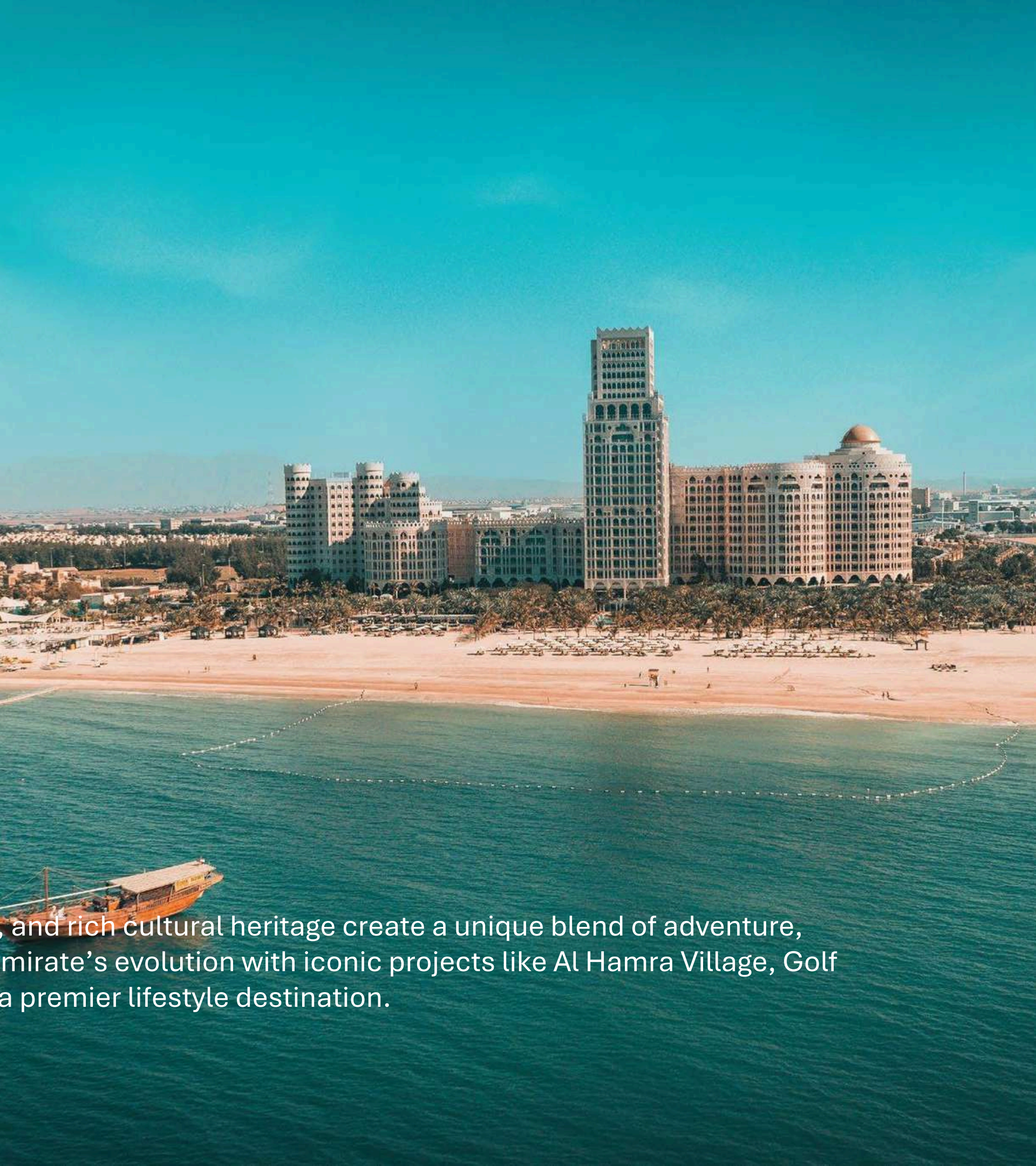


WALDORF ASTORIA®
RESIDENCES • RAS AL KHAIMAH

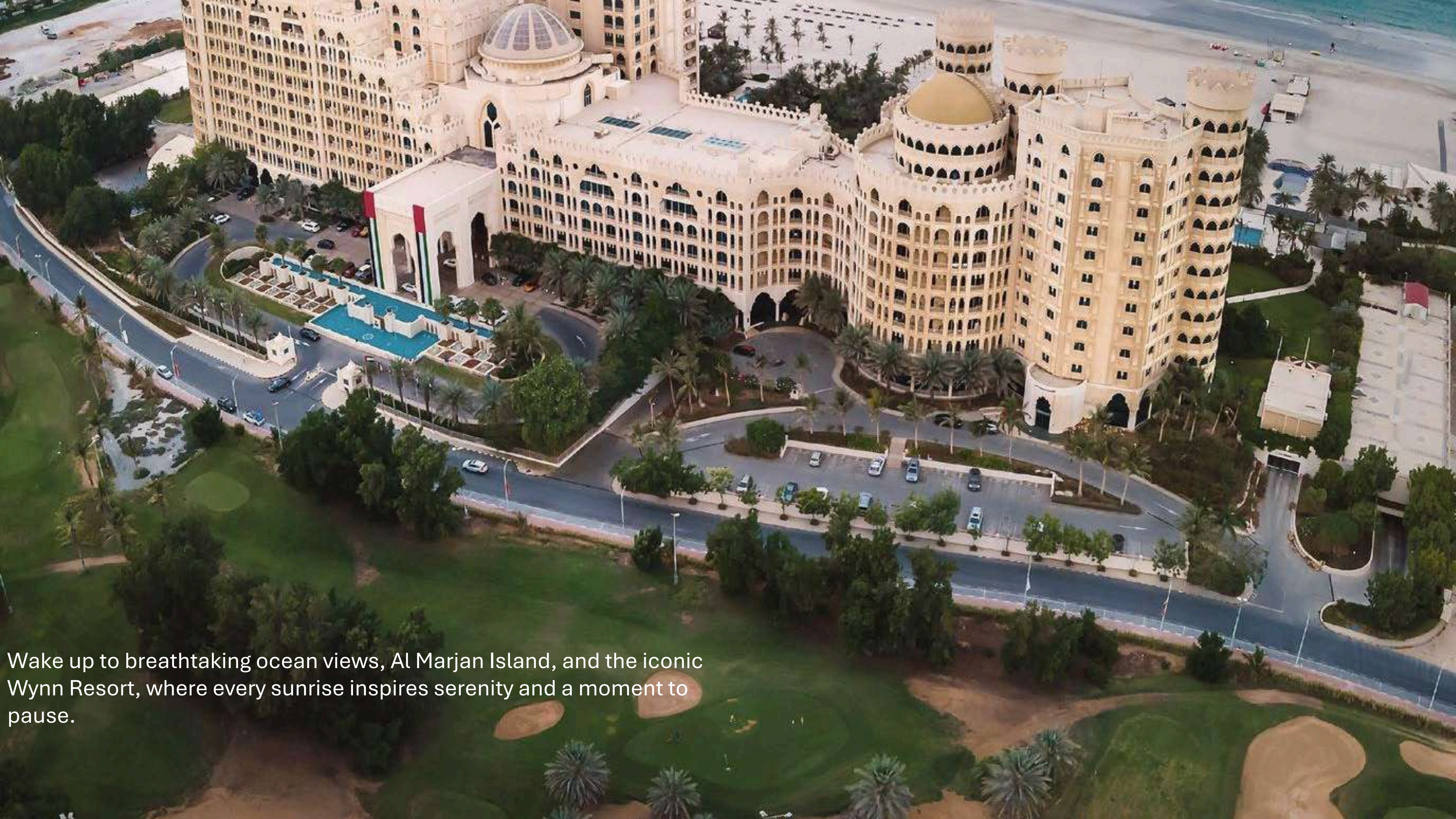
MAJARA LUXURY REAL ESTATE LLC

Head Office Level 36-01, Po Box :124382 , Trade Center 1, Sheikh Zayed Road , Burj Al Salam Tower Dubai UAE

Majara Presents: Waldorf Astoria Residences at Al Hamra



Discover Ras Al Khaimah, where pristine landscapes, untouched beaches, and rich cultural heritage create a unique blend of adventure, luxury, and serenity. Al Hamra, a visionary leader in the region, drives the emirate's evolution with iconic projects like Al Hamra Village, Golf Club, Royal Yacht Club, Manar Mall, and Falcon Island—shaping RAK into a premier lifestyle destination.

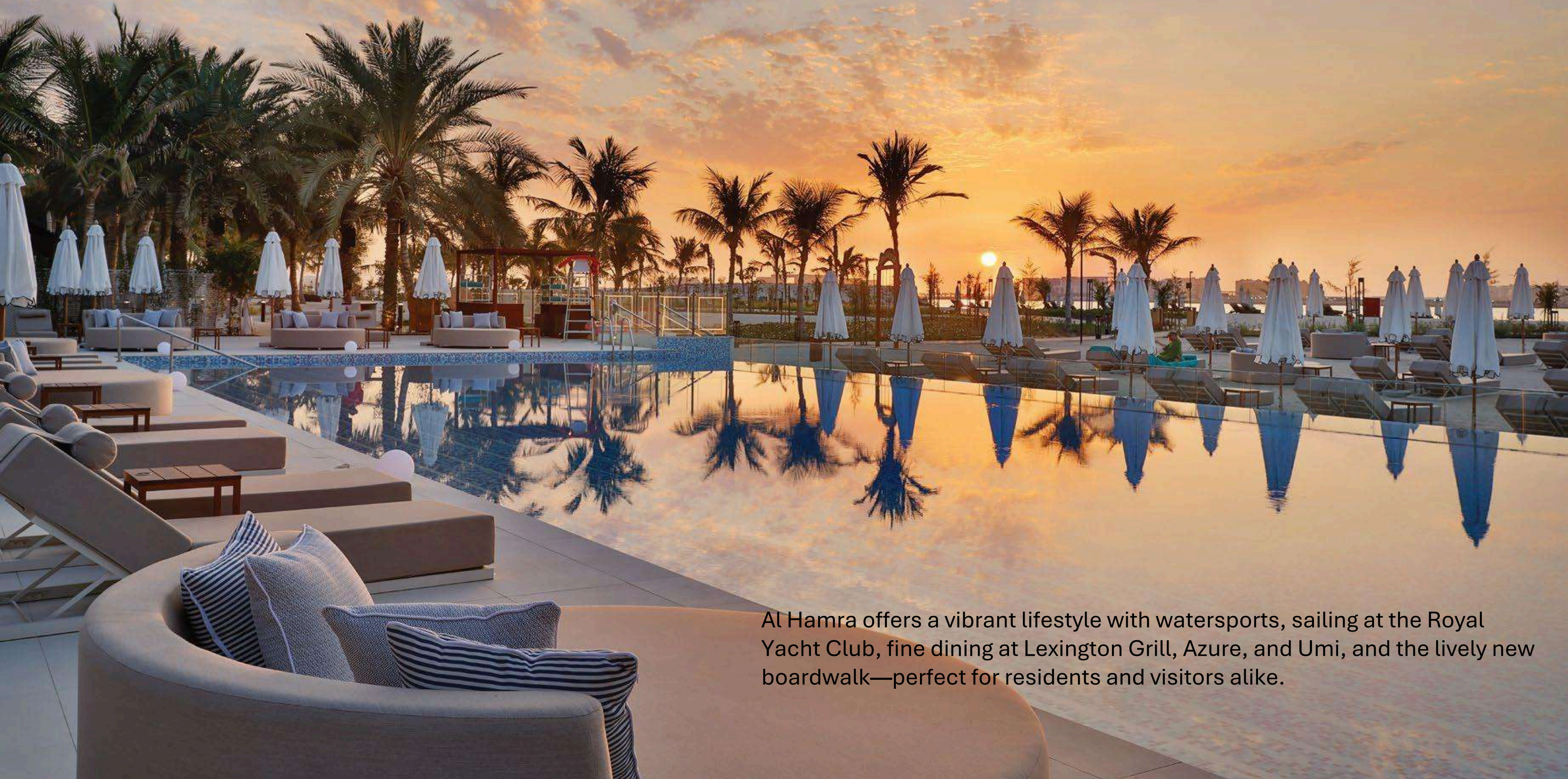


Wake up to breathtaking ocean views, Al Marjan Island, and the iconic Wynn Resort, where every sunrise inspires serenity and a moment to pause.

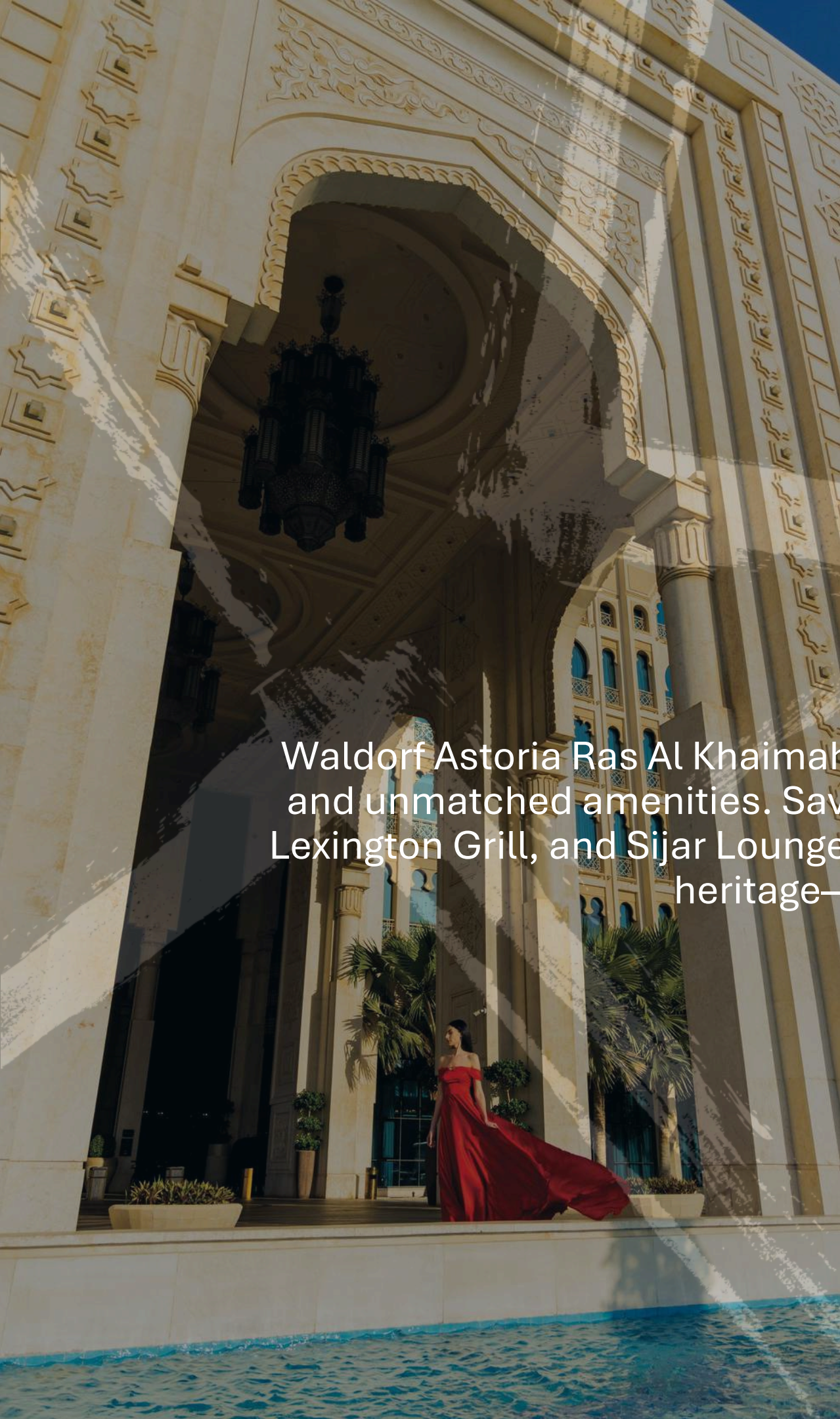


Experience Al Hamra—a destination within a destination—where vibrant living meets exceptional leisure. Enjoy golf at Al Hamra Golf Club, sailing at the Royal Yacht Club, all set against the stunning Hajar Mountains and Arabian Gulf.

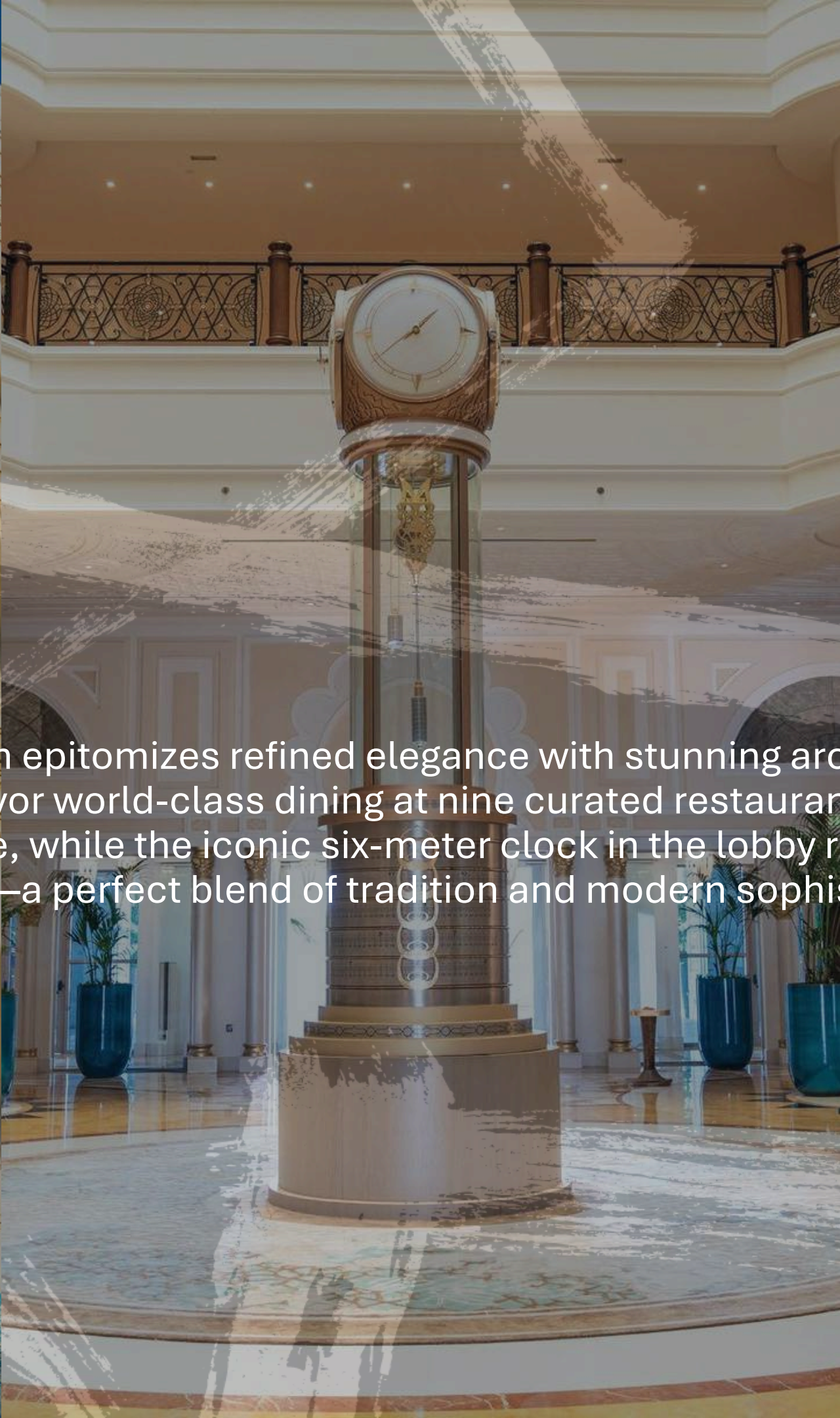
The Living Heart of the Destination



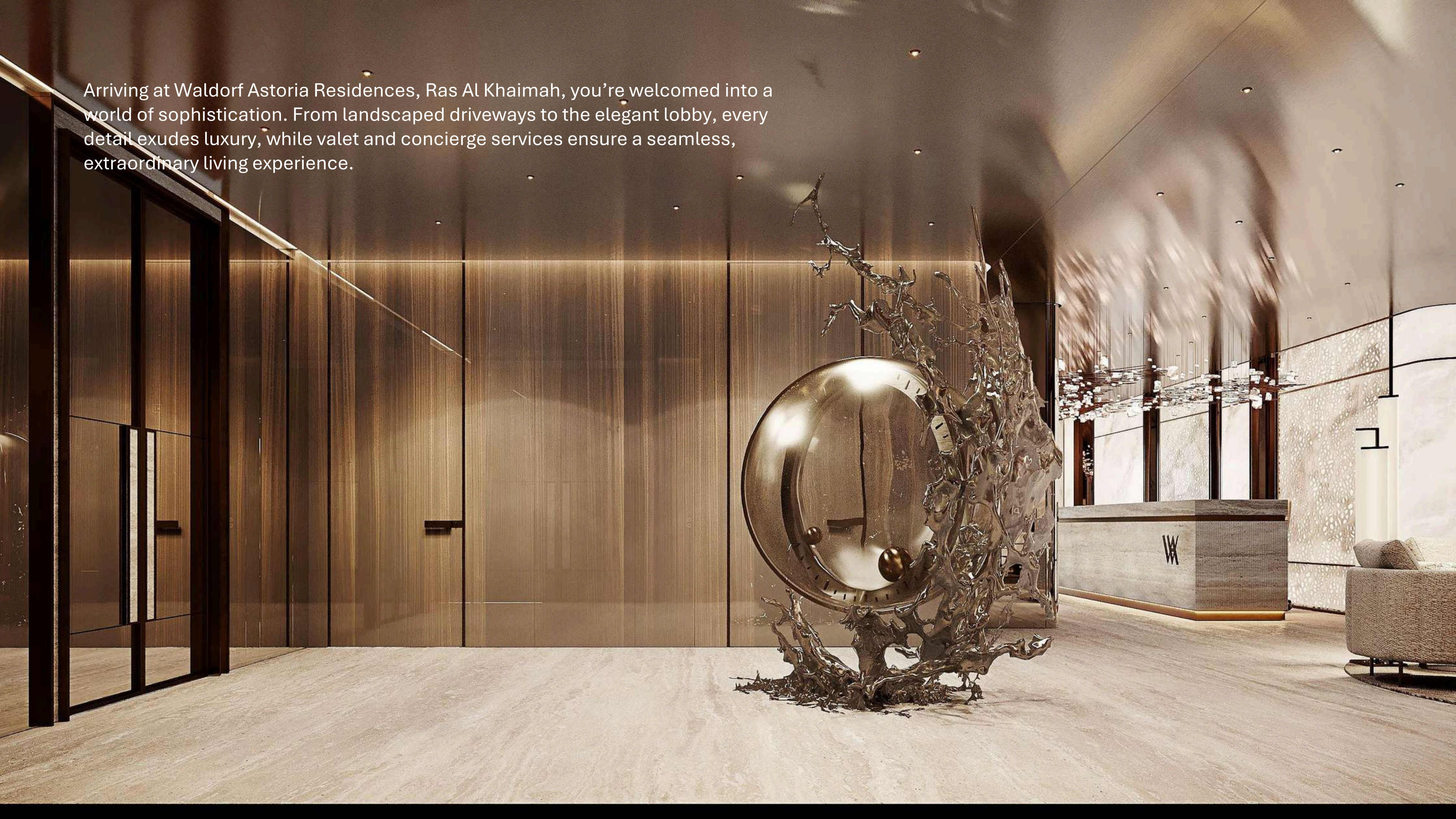
Al Hamra offers a vibrant lifestyle with watersports, sailing at the Royal Yacht Club, fine dining at Lexington Grill, Azure, and Umi, and the lively new boardwalk—perfect for residents and visitors alike.



Waldorf Astoria Ras Al Khaimah epitomizes refined elegance with stunning architecture, impeccable service, and unmatched amenities. Savor world-class dining at nine curated restaurants and lounges, including UMI, Lexington Grill, and Sijar Lounge, while the iconic six-meter clock in the lobby reflects the region's rich cultural heritage—a perfect blend of tradition and modern sophistication.



Arriving at Waldorf Astoria Residences, Ras Al Khaimah, you're welcomed into a world of sophistication. From landscaped driveways to the elegant lobby, every detail exudes luxury, while valet and concierge services ensure a seamless, extraordinary living experience.



Luxury in Every Nuance

Exquisitely designed with modern fittings and contemporary finishes, every detail—from plush furnishings to polished marble floors—blends timeless charm with sophisticated elegance.

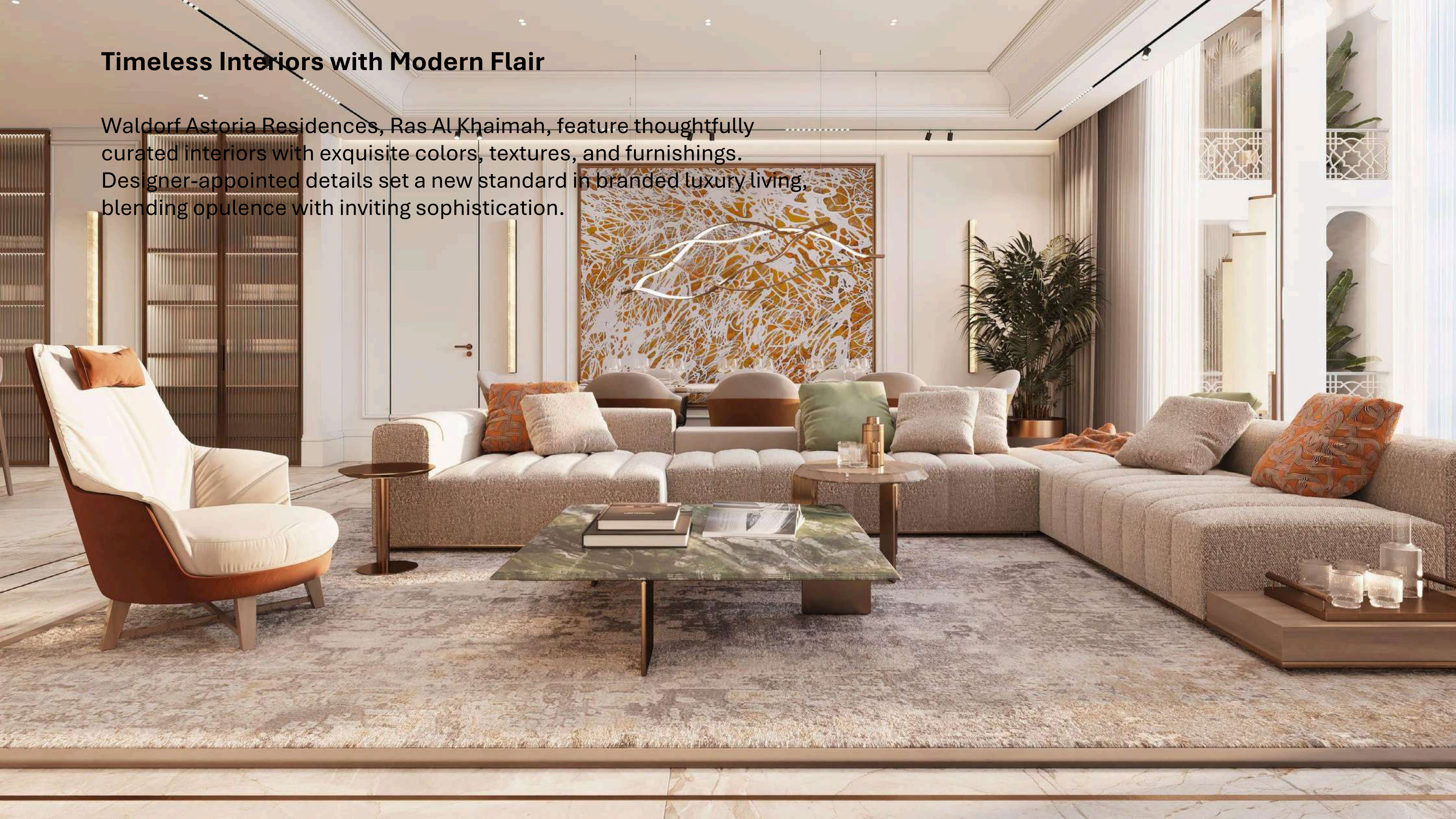
RESIDENCE FEATURES:

- Meticulously furnished 2, 3, 4 and 5 Bedrooms residences
- Floor-to-ceiling windows & terraces with stunning views of the Arabian Gulf and Al Marjan Island
- Contemporary custom cabinetry finished in both fine wood veneers and lacquer with State-of-the-art integrated appliances
- Bathrooms with top-of-the-line fixtures and adorned with custom marble finishes.
- High-end smart system to control lights, AC, and curtains, with user-friendly voice control interface.
- Spacious walk-in closets and wardrobes in all residences
- Pre-wired for high-speed communications
- Private lobby and dedicated elevators for the residences
- Accessible and elderly-friendly design
- Pet-friendly residences and facilities for furry loved ones



Timeless Interiors with Modern Flair

Waldorf Astoria Residences, Ras Al Khaimah, feature thoughtfully curated interiors with exquisite colors, textures, and furnishings. Designer-appointed details set a new standard in branded luxury living, blending opulence with inviting sophistication.



Deliberately Designed

These residences embody the pinnacle of Art Deco elegance, seamlessly blending form and function. With meticulously chosen materials and curated branded furnishings, they offer timeless beauty, unmatched comfort, and an unparalleled standard of refined living.





















The Coastal Retreat

Perched on the 16th floor, Coastal Vista Lounge offers stunning ocean views, sunsets, and a sophisticated retreat with a lounge, meeting room, starlight terrace, library, cigar room, and wine tasting space—perfectly blending luxury and refinement.



STARLIGHT
TERRACE



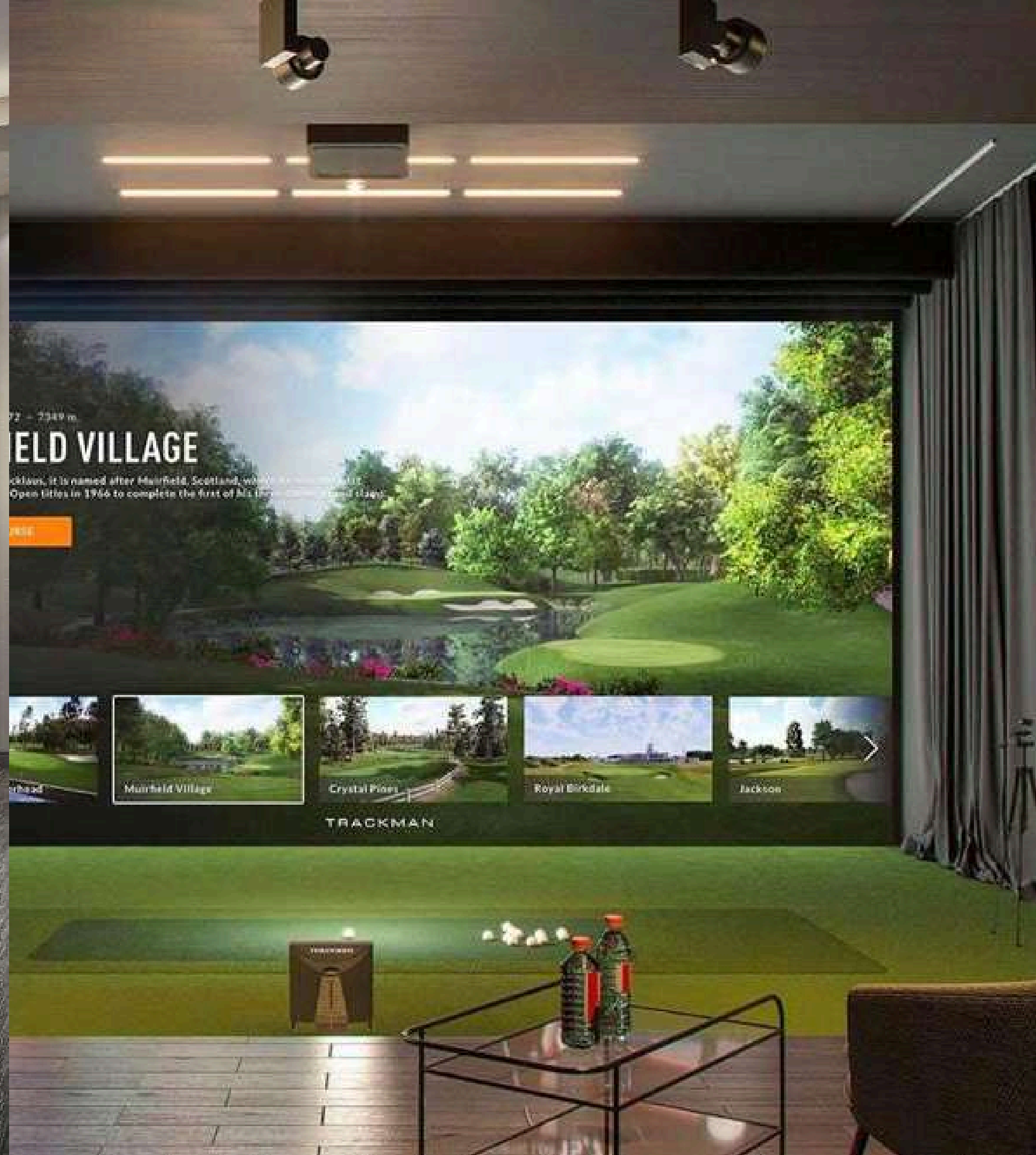
**LIBRARY,
MEETING ROOM
& CIGAR LOUNGE**



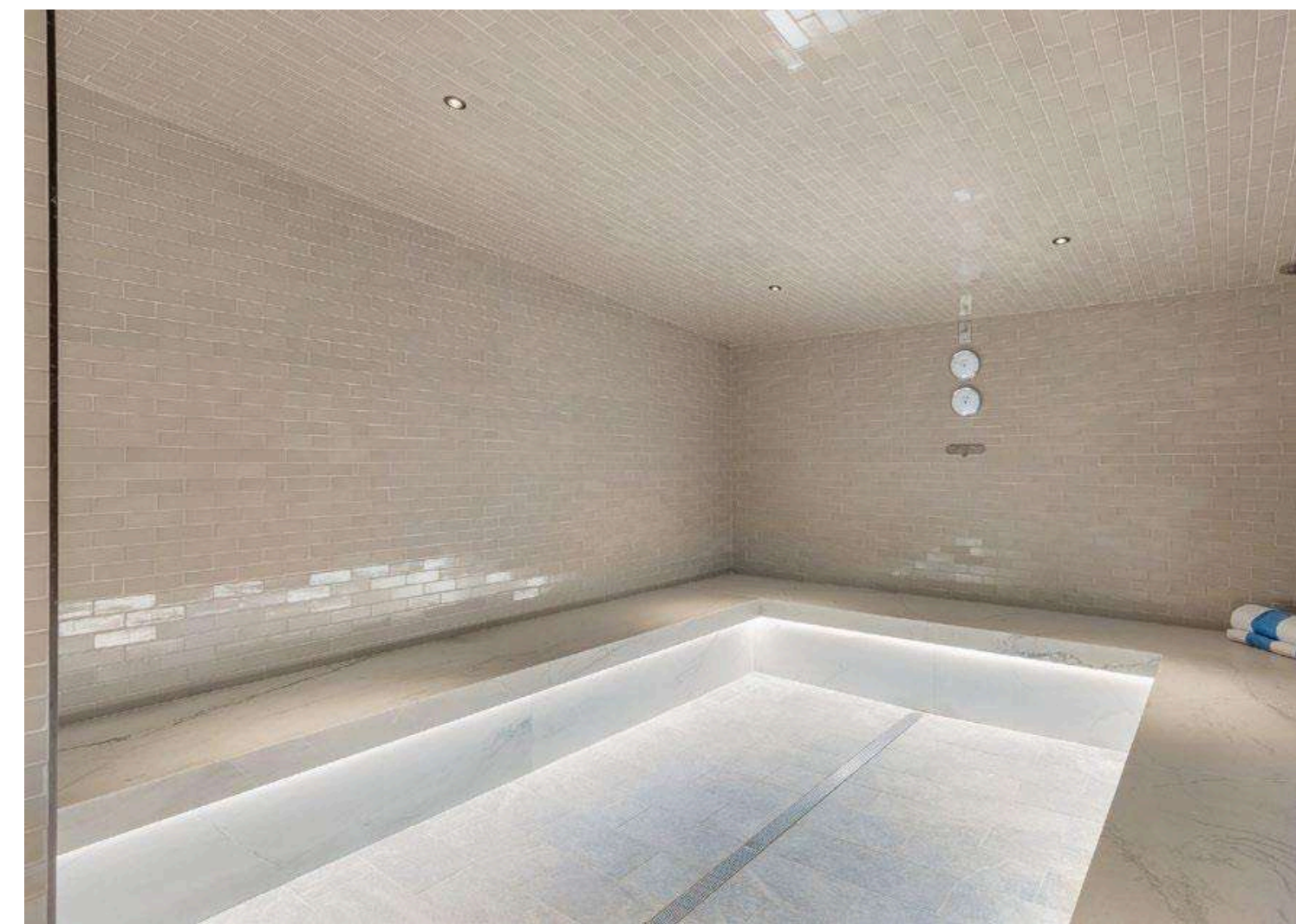
WINE LOCKERS & CELLAR



SPORTS SIMULATION & CINEMA ROOM



**FITNESS CENTRE
& LONGEVITY SPA**



PERSONAL CONCIERGE & P.R.O. SERVICES

The dedicated concierge and PRO services handle everything from reservations and unique experiences to paperwork and government formalities, ensuring residents can fully enjoy a seamless and luxurious lifestyle.



AMENITIES

TOTAL AREA
679.0 SQ.M. / 7,306.0 SQ.FT.

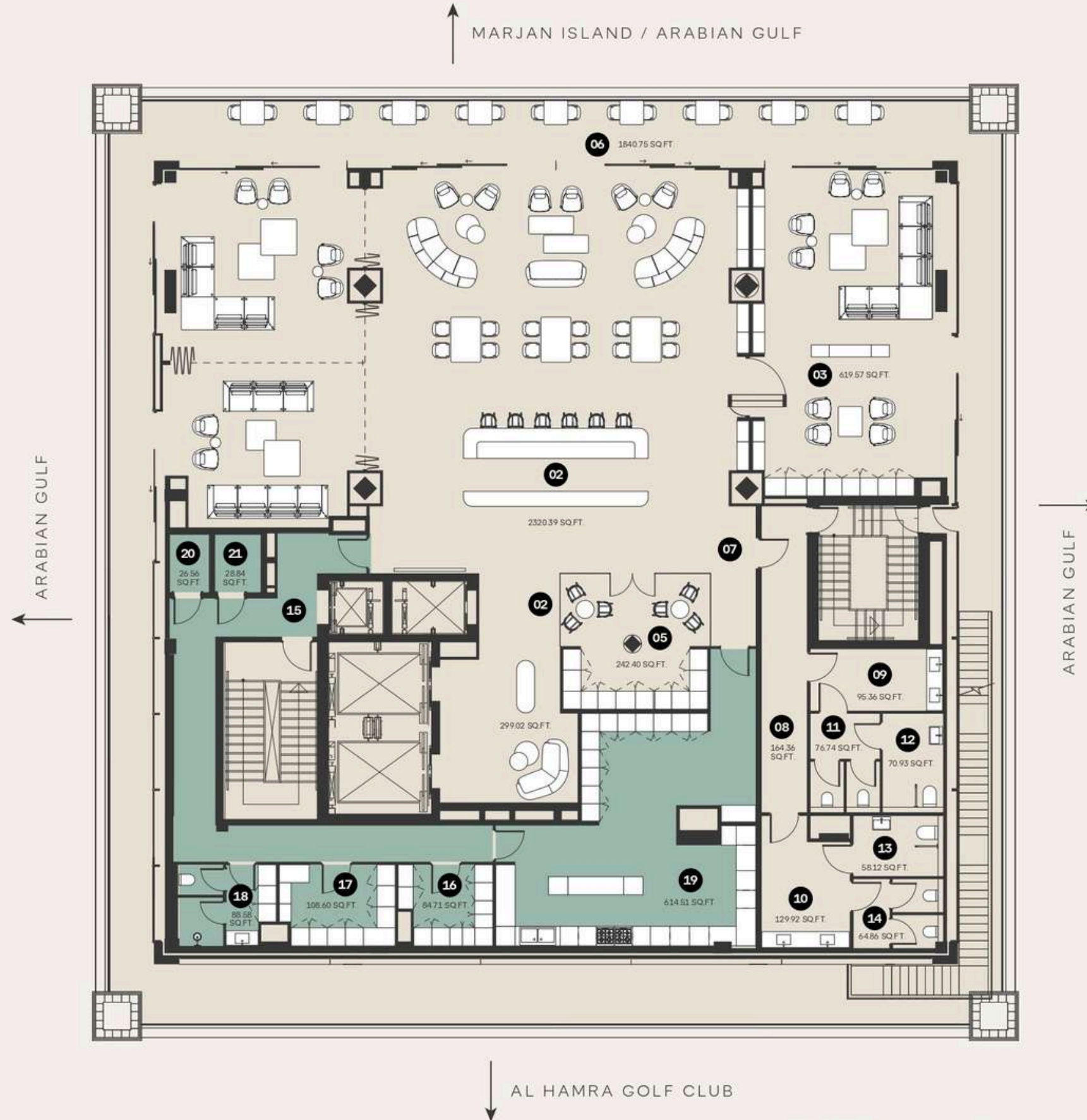
FLOORS
16TH

EXPLICATION OF PREMISES

- 01 FOYER
- 02 COASTAL VISTA LOUNGE & BAR
- 03 MONTE CARLO CIGAR LOUNGE
- 04 HUMIDOR
- 05 1893 WINE CELLAR
- 06 STARLIGHT TERRACE
- 07 HALL 1
- 08 HALL 2
- 09 POWDER ROOM 1
- 10 POWDER ROOM 2
- 11 WC 1
- 12 WC 2
- 13 WC 3
- 14 WC 4

EXPLANATION OF TECHNICAL PREMISES

- 15 HALL 3
- 16 FREEZER
- 17 STORAGE 2
- 18 SERVICE BATHROOM
- 19 KITCHEN
- 20 TELECOM ROOM
- 21 ELECTRICAL ROOM



ARTIST RENDERINGS the artist representations and interior decorations, finishes, appliances and furnishings are provided for illustrative purposes only. The Developer makes no representations or warranties except as set forth in the sales agreement. Developer reserves the right to substitute materials, appliances, equipment, fixtures and other construction and design details specified herein with similar materials, appliances, equipment and/or fixtures of substantially equal or better quality. Developer reserves the right to make changes in accordance with the terms of the Offering Plan. The use of any designations, labels or nomenclature is for marketing purposes only.

0.1m 5m 10m 25m

EXCLUSIVE RESIDENT AMENITIES

A host of services and private amenities are always at your disposal along with round-the-clock concierge dedicated for the residents to ensure a smooth and enjoyable experience every time you step in or out of your residence.

- Personal Concierge
- Fitness Centre with Personal Trainers
- Private Resident Lounge
- Famed Starlight terrace concept from Waldorf Astoria New York
- Dedicated Fitness Centre
- Cigar Lounge
- Business Centre
- Golf & Sports Simulation Room
- Alluring Bars and Lounges
- Resident Library
- Private Wine Locker & Cellar
- Cinema Lounge
- Pet Grooming Spa
- Personal PRO Service

RESORT- WIDE FACILITIES FOR
THE RESIDENTS INCLUDE:

- Retail Boutiques
- Beauty Saloon
- World Class Spa
- Multiple Swimming Pools
- Kids Club and Swimming Pool with Splash Pad
- Tennis Courts
- World Class Restaurants
- Private Dining Rooms
- Exclusive Chef's table dining experiences





WALDORF ASTORIA®
RESIDENCES • RAS AL KHAIMAH

والدورف أستوريا ريزيدنسز رأس الخيمة

FLOOR PLANS

2 BEDROOM TYPE 1

TOTAL AREA
175.6 SQ.M. / 1,889.3 SQ.FT.

UNIT TYPE
SIMPLEX

VIEWS
PARTIAL SEA VIEW

FLOORS
1ST

EXPLICATION OF PREMISES

- 01 FOYER
- 02 POWDER ROOM
- 03 LAUNDRY
- 04 KITCHEN AREA / BREAKFAST COUNTER
- 05 DINING AREA
- 06 LIVING AREA
- 07 MASTER BEDROOM
- 08 MASTER BEDROOM CLOSET
- 09 MASTER BEDROOM TERRACE
- 10 MASTER BATHROOM
- 11 BEDROOM 2
- 12 BEDROOM 2 CLOSET
- 13 BATHROOM 2



MARJAN ISLAND / ARABIAN GULF



NUMBER OF UNITS: 1
STARTING PRICE: AED 8,400,000

ARTIST RENDERINGS: the artist representations and interior decorations, finishes, appliances and furnishings are provided for illustrative purposes only. The Developer makes no representations or warranties except as set forth in the sales agreement. Developer reserves the right to substitute materials, appliances, equipment, fixtures and other construction and design details specified herein with similar materials, appliances, equipment and/or fixtures of substantially equal or better quality. Developer reserves the right to make changes in accordance with the terms of the Offering Plan. The use of any designations, labels or nomenclature is for marketing purposes only.



2 BEDROOM TYPE 2

TOTAL AREA
2171 SQ.M. / 2,336.1 SQ.FT.

UNIT TYPE
SIMPLEX

VIEWS
PARTIAL SEA VIEW

FLOORS
2ND, 3RD, 4TH & 5TH

EXPLICATION OF PREMISES

- 01 FOYER
- 02 POWDER ROOM
- 03 LAUNDRY
- 04 KITCHEN AREA / BREAKFAST COUNTER
- 05 DINING AREA
- 06 LIVING AREA
- 07 MASTER BEDROOM
- 08 MASTER BEDROOM CLOSET
- 09 MASTER BATHROOM
- 10 SAFE ROOM
- 11 MASTER BEDROOM TERRACE
- 12 BEDROOM 2
- 13 BEDROOM 2 CLOSET
- 14 BATHROOM 2



ARTIST RENDERINGS: the artist representations and interior decorations, finishes, appliances and furnishings are provided for illustrative purposes only. The Developer makes no representations or warranties except as set forth in the sales agreement. Developer reserves the right to substitute materials, appliances, equipment, fixtures and other construction and design details specified herein with similar materials, appliances, equipment and/or fixtures of substantially equal or better quality. Developer reserves the right to make changes in accordance with the terms of the Offering Plan. The use of any designations, labels or nomenclature is for marketing purposes only.



2 BEDROOM TYPE 3

TOTAL AREA
335.7 SQ.M. / 3,613.5 SQ.FT.

UNIT TYPE
SIMPLEX

VIEWS
PARTIAL SEA VIEW

FLOORS
2ND, 3RD, 4TH & 5TH

EXPLICATION OF PREMISES

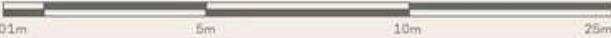
- 01 FOYER
- 02 POWDER ROOM
- 03 HALL
- 04 LIVING AREA
- 05 DINING AREA
- 06 KITCHEN AREA / BREAKFAST COUNTER
- 07 PREP KITCHEN
- 08 LAUNDRY
- 09 MAID'S ROOM
- 10 MAID'S BATHROOM
- 11 MASTER BEDROOM
- 12 MASTER BEDROOM CLOSET
- 13 MASTER BATHROOM
- 14 BEDROOM 2
- 15 BEDROOM 2 CLOSET
- 16 BATHROOM 2
- 17 TERRACE



NUMBER OF UNITS: 4
STARTING PRICE: AED 16,300,000



ARTIST RENDERINGS: the artist representations and interior decorations, finishes, appliances and furnishings are provided for illustrative purposes only. The Developer makes no representations or warranties except as set forth in the sales agreement. Developer reserves the right to substitute materials, appliances, equipment, fixtures and other construction and design details specified herein with similar materials, appliances, equipment and/or fixtures of substantially equal or better quality. Developer reserves the right to make changes in accordance with the terms of the Offering Plan. The use of any designations, labels or nomenclature is for marketing purposes only.



3 BEDROOM TYPE 2.1

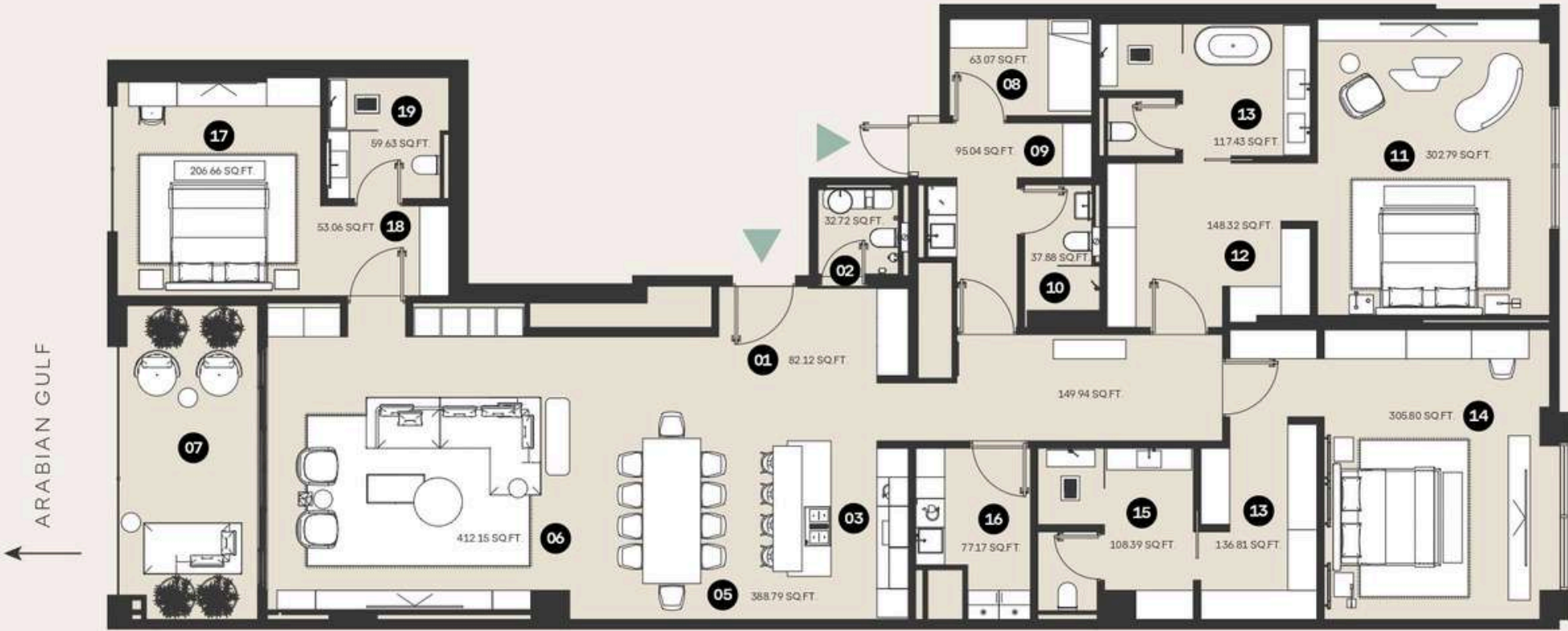
TOTAL AREA
308.3 SQ.M. / 3,011.7 SQ.FT.

UNIT TYPE
SIMPLEX

VIEWS
PARTIAL SEA VIEW

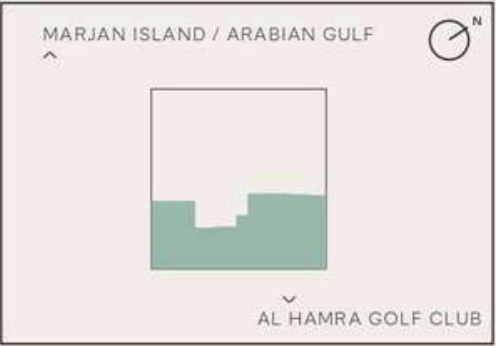
FLOORS
6TH & 7TH

- EXPLICATION OF PREMISES
- 01 FOYER
 - 02 POWDER ROOM
 - 03 KITCHEN AREA / BREAKFAST COUNTER
 - 04 PREP KITCHEN
 - 05 DINING AREA
 - 06 LIVING AREA
 - 07 TERRACE
 - 08 MAID'S ROOM
 - 09 LAUNDRY
 - 10 MAID'S BATHROOM
 - 11 MASTER BEDROOM
 - 12 MASTER CLOSET
 - 13 MASTER BATHROOM
 - 14 BEDROOM 2
 - 15 BEDROOM 2 CLOSET
 - 16 BATHROOM 2
 - 17 BEDROOM 3
 - 18 BEDROOM 3 CLOSET
 - 19 BATHROOM 3

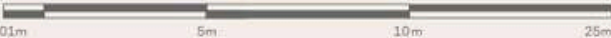


ARABIAN GULF

NUMBER OF UNITS: 2
STARTING PRICE: AED 16,000,000



ARTIST RENDERINGS: the artist representations and interior decorations, finishes, appliances and furnishings are provided for illustrative purposes only. The Developer makes no representations or warranties except as set forth in the sales agreement. Developer reserves the right to substitute materials, appliances, equipment, fixtures and other construction and design details specified herein with similar materials, appliances, equipment and/or fixtures of substantially equal or better quality. Developer reserves the right to make changes in accordance with the terms of the Offering Plan. The use of any designations, labels or nomenclature is for marketing purposes only.



3 BEDROOM TYPE 2.2

TOTAL AREA
308.3 SQ.M. / 3,317.1 SQ.FT.

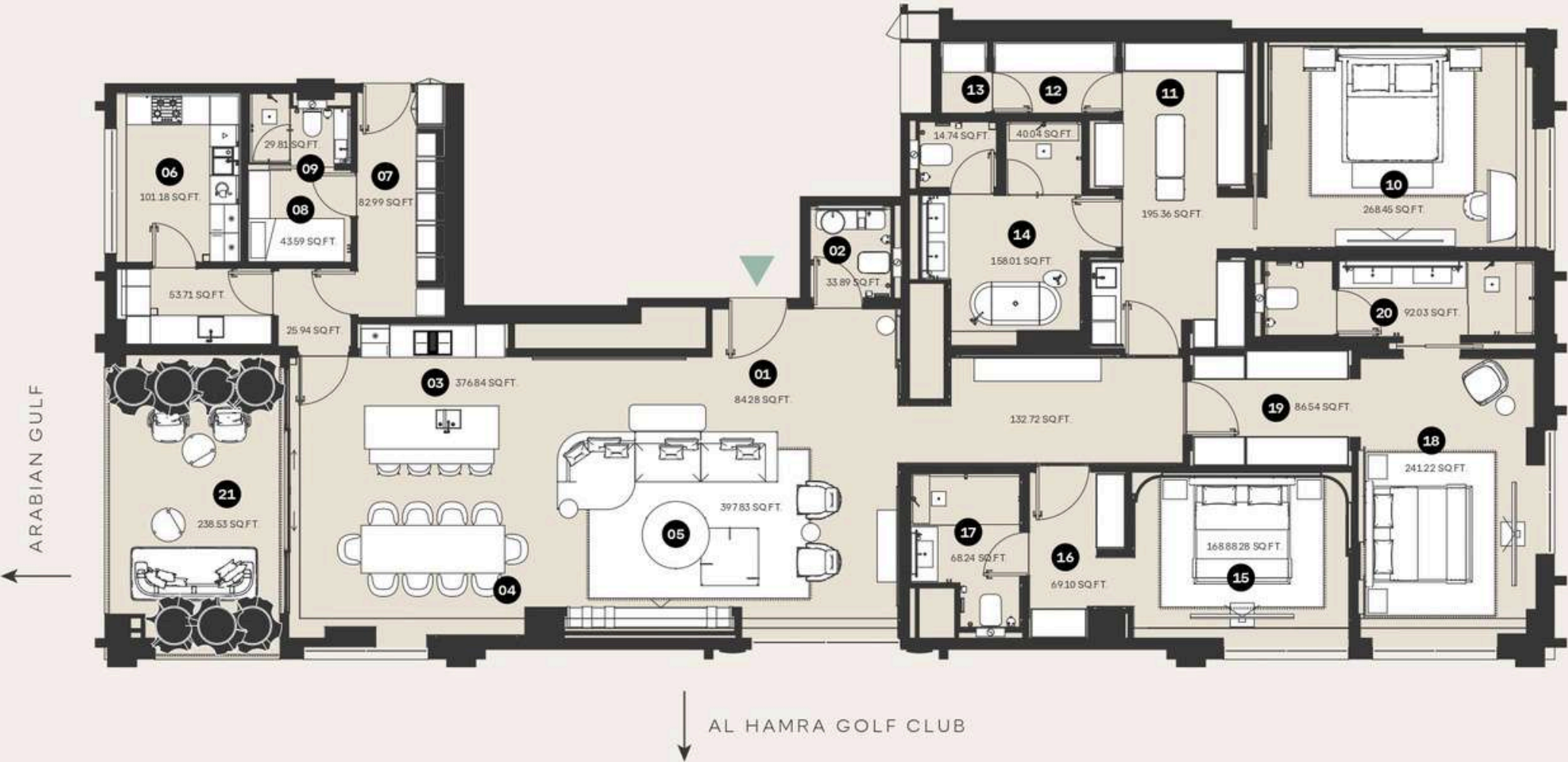
UNIT TYPE
SIMPLEX

VIEWS
PARTIAL SEA & GOLF VIEW

FLOORS
8TH, 9TH, 11TH, 12TH, 13TH & 14TH

EXPLICATION OF PREMISES

- 01 FOYER
- 02 POWDER ROOM
- 03 KITCHEN AREA / BREAKFAST COUNTER
- 04 DINING AREA
- 05 LIVING AREA
- 06 PREP KITCHEN
- 07 LAUNDRY
- 08 MAID'S BEDROOM
- 09 MAID'S BATHROOM
- 10 MASTER BEDROOM
- 11 MASTER CLOSET
- 12 MASTER BEDROOM STORAGE
- 13 MASTER BEDROOM SAFE
- 14 MASTER BATHROOM
- 15 BEDROOM 2
- 16 BEDROOM 2 CLOSET
- 17 BATHROOM 2
- 18 BEDROOM 3
- 19 BEDROOM 3 CLOSET
- 20 BATHROOM 3
- 21 TERRACE



NUMBER OF UNITS: 6
STARTING PRICE: AED 16,500,000



ARTIST RENDERINGS: the artist representations and interior decorations, finishes, appliances and furnishings are provided for illustrative purposes only. The Developer makes no representations or warranties except as set forth in the sales agreement. Developer reserves the right to substitute materials, appliances, equipment, fixtures and other construction and design details specified herein with similar materials, appliances, equipment and/or fixtures of substantially equal or better quality. Developer reserves the right to make changes in accordance with the terms of the Offering Plan. The use of any designations, labels or nomenclature is for marketing purposes only.



3 BEDROOM TYPE 2.3

TOTAL AREA
308.3 SQ.M. / 3,318.3 SQ.FT.

UNIT TYPE
SIMPLEX

VIEWS
PARTIAL SEA & GOLF VIEW

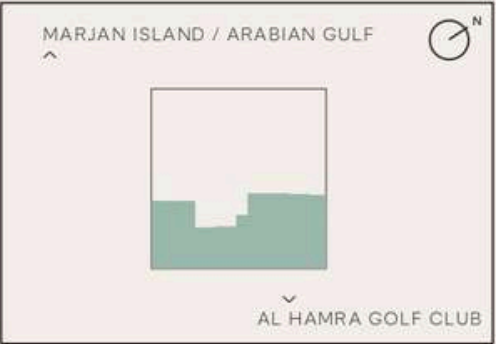
FLOORS
10TH

EXPLICATION OF PREMISES

- 01 FOYER
- 02 POWDER ROOM
- 03 KITCHEN AREA / BREAKFAST COUNTER
- 04 DINING AREA
- 05 LIVING AREA
- 06 PREP KITCHEN
- 07 CORRIDOR
- 08 MAID'S BEDROOM
- 09 MAID'S BATHROOM
- 10 MASTER BEDROOM
- 11 MASTER CLOSET
- 12 MASTER BEDROOM SAFE
- 13 MASTER BATHROOM
- 14 BEDROOM 2
- 15 BEDROOM 2 CLOSET
- 16 BATHROOM 2
- 17 BEDROOM 3
- 18 BEDROOM 3 CLOSET
- 19 BATHROOM 3
- 20 TERRACE



NUMBER OF UNITS: 1
STARTING PRICE: AED 17,000,000



ARTIST RENDERINGS: the artist representations and interior decorations, finishes, appliances and furnishings are provided for illustrative purposes only. The Developer makes no representations or warranties except as set forth in the sales agreement. Developer reserves the right to substitute materials, appliances, equipment, fixtures and other construction and design details specified herein with similar materials, appliances, equipment and/or fixtures of substantially equal or better quality. Developer reserves the right to make changes in accordance with the terms of the Offering Plan. The use of any designations, labels or nomenclature is for marketing purposes only.



3 BEDROOM

TYPE 2.4

TOTAL AREA
308.3 SQ.M. / 3,317.1 SQ.FT.

UNIT TYPE
SIMPLEX

VIEWS
PARTIAL SEA & GOLF VIEW

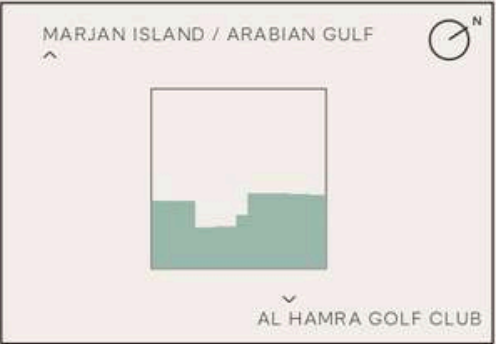
FLOORS
15TH

EXPLICATION OF PREMISES

- 01 FOYER
- 02 POWDER ROOM
- 03 KITCHEN AREA / BREAKFAST COUNER
- 04 DINING AREA
- 05 LIVING AREA
- 06 MAID'S BEDROOM
- 07 MAID'S BATHROOM
- 08 LAUNDRY
- 09 MASTER BEDROOM
- 10 MASTER CLOSET
- 11 MASTER BEDROOM STORAGE
- 12 MASTER BEDROOM SAFE
- 13 MASTER BATHROOM
- 14 BEDROOM 2
- 15 CLOSET 2
- 16 BATHROOM 2
- 17 BEDROOM 3
- 18 CLOSET 3
- 19 BATHROOM 3
- 20 TERRACE



NUMBER OF UNITS: 1
STARTING PRICE: AED 19,300,000



ARTIST RENDERINGS: the artist representations and interior decorations, finishes, appliances and furnishings are provided for illustrative purposes only. The Developer makes no representations or warranties except as set forth in the sales agreement. Developer reserves the right to substitute materials, appliances, equipment, fixtures and other construction and design details specified herein with similar materials, appliances, equipment and/or fixtures of substantially equal or better quality. Developer reserves the right to make changes in accordance with the terms of the Offering Plan. The use of any designations, labels or nomenclature is for marketing purposes only.



3 BEDROOM TYPE 3

TOTAL AREA
384.2 SQ.M. / 4,135.6 SQ.FT.

UNIT TYPE
SIMPLEX

VIEWS
SEA VIEW

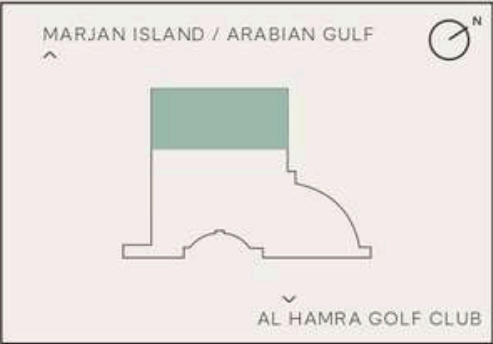
FLOORS
1ST - 15TH

EXPLICATION OF PREMISES

- 01 FOYER
- 02 POWDER ROOM
- 03 LAUNDRY
- 04 MAID'S BEDROOM
- 05 MAID'S BATHROOM
- 06 LIVING AREA
- 07 DINING AREA
- 08 KITCHEN AREA / BREAKFAST COUNTER
- 09 PREP KITCHEN
- 10 TERRACE
- 11 MASTER BEDROOM
- 12 MASTER CLOSET
- 13 MASTER BEDROOM SAFE
- 14 MASTER BATHROOM
- 15 MASTER BEDROOM TERRACE
- 16 BEDROOM 2
- 17 BEDROOM 2 TERRACE
- 18 BEDROOM 2 CLOSET
- 19 BATHROOM 2
- 20 BEDROOM 3
- 21 BEDROOM 3 CLOSET
- 22 BATHROOM 3



NUMBER OF UNITS: 15
STARTING PRICE: AED 19,300,000



ARTIST RENDERINGS: the artist representations and interior decorations, finishes, appliances and furnishings are provided for illustrative purposes only. The Developer makes no representations or warranties except as set forth in the sales agreement. Developer reserves the right to substitute materials, appliances, equipment, fixtures and other construction and design details specified herein with similar materials, appliances, equipment and/or fixtures of substantially equal or better quality. Developer reserves the right to make changes in accordance with the terms of the Offering Plan. The use of any designations, labels or nomenclature is for marketing purposes only.



4 BEDROOM PENTHOUSE
DUPLEX

TOTAL AREA
316.0 SQ.M. / 3400.2 SQ.FT.

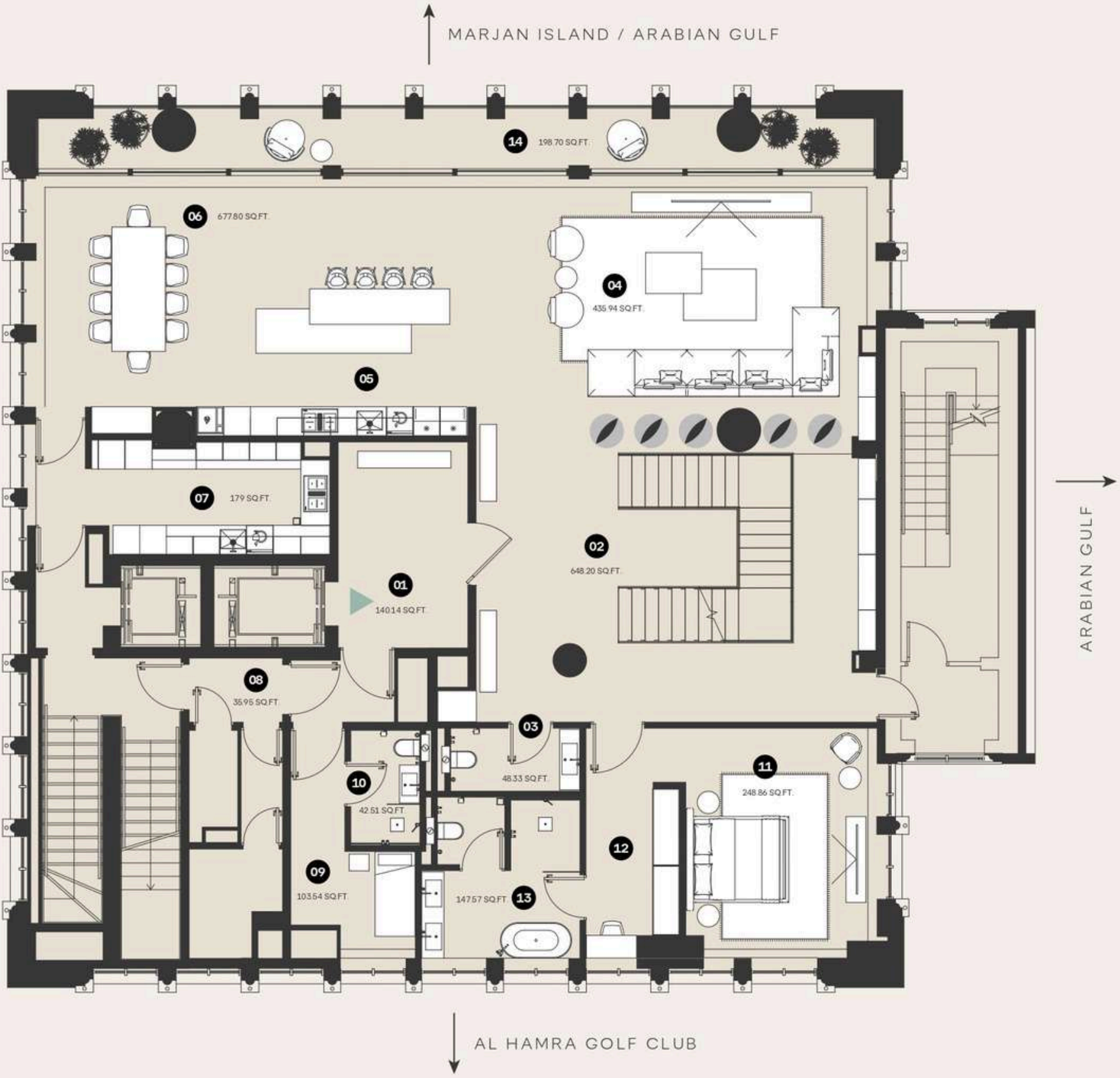
UNIT TYPE
DUPLEX

VIEWS
360 VIEWS

FLOORS
19TH

EXPLICATION OF PREMISES

- 01 FOYER
- 02 HALL
- 03 POWDER ROOM
- 04 LIVING AREA
- 05 KITCHEN AREA / BREAKFAST COUNTER
- 06 DINING AREA
- 07 PREP KITCHEN
- 08 CORRIDOR
- 09 MAID'S BEDROOM
- 10 MAID'S BATHROOM
- 11 BEDROOM 1
- 12 BEDROOM 1 CLOSET
- 13 BATHROOM 1
- 14 TERRACE



NUMBER OF UNITS: 1
STARTING PRICE: AED 50,000,000

ARTIST RENDERINGS: the artist representations and interior decorations, finishes, appliances and furnishings are provided for illustrative purposes only. The Developer makes no representations or warranties except as set forth in the sales agreement. Developer reserves the right to substitute materials, appliances, equipment, fixtures and other construction and design details specified herein with similar materials, appliances, equipment and/or fixtures of substantially equal or better quality. Developer reserves the right to make changes in accordance with the terms of the Offering Plan. The use of any designations, labels or nomenclature is for marketing purposes only.



5 BEDROOM
PENTHOUSE

TOTAL AREA
552.0 SQ.M. / 5,939.5 SQ.FT.

UNIT TYPE
DUPLEX

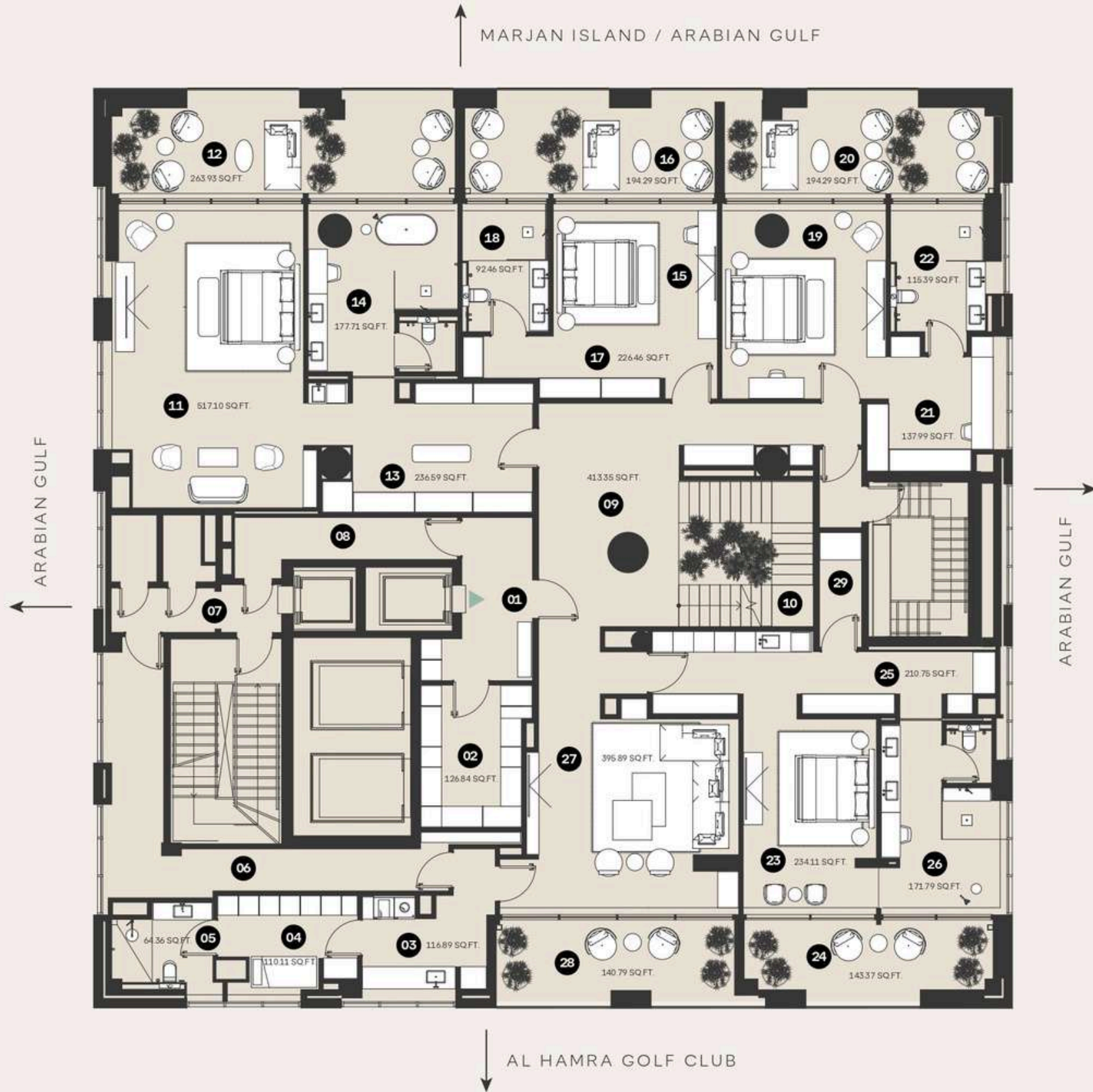
VIEWS
360 VIEWS

FLOORS
17TH

EXPLICATION OF PREMISES

- | | |
|----|------------------------|
| 01 | FOYER |
| 02 | STORAGE |
| 03 | LAUNDRY |
| 04 | MAID'S BEDROOM |
| 05 | MAID'S BATHROOM |
| 06 | CORRIDOR 1 |
| 07 | CORRIDOR 2 |
| 08 | CORRIDOR 3 |
| 09 | HALL |
| 10 | STAIRCASE |
| 11 | MASTER BEDROOM |
| 12 | MASTER BEDROOM TERRACE |
| 13 | MASTER CLOSET |
| 14 | MASTER BATHROOM |
| 15 | BEDROOM 2 |
| 16 | BEDROOM 2 TERRACE |
| 17 | CLOSET 2 |
| 18 | BATHROOM 2 |
| 19 | BEDROOM 3 |
| 20 | BEDROOM 3 TERRACE |
| 21 | CLOSET 3 |
| 22 | BATHROOM 3 |
| 23 | BEDROOM 4 |
| 24 | BEDROOM 4 TERRACE |
| 25 | CLOSET 4 |
| 26 | BATHROOM 4 |

- | | |
|----|---------------------|
| 27 | LIVING AREA |
| 28 | LIVING AREA TERRACE |
| 29 | SAFE ROOM |



NUMBER OF UNITS: 1
STARTING PRICE: AED 77,952,888

ARTIST RENDERINGS: the artist representations and interior decorations, finishes, appliances and furnishings are provided for illustrative purposes only. The Developer makes no representations or warranties except as set forth in the sales agreement. Developer reserves the right to substitute materials, appliances, equipment, fixtures and other construction and design details specified herein with similar materials, appliances, equipment and/or fixtures of substantially equal or better quality. Developer reserves the right to make changes in accordance with the terms of the Offering Plan. The use of any designations, labels or nomenclature is for marketing purposes only.



5 BEDROOM
PENTHOUSE

TOTAL AREA
300 SQ.M. / 3,228 SQ.FT.

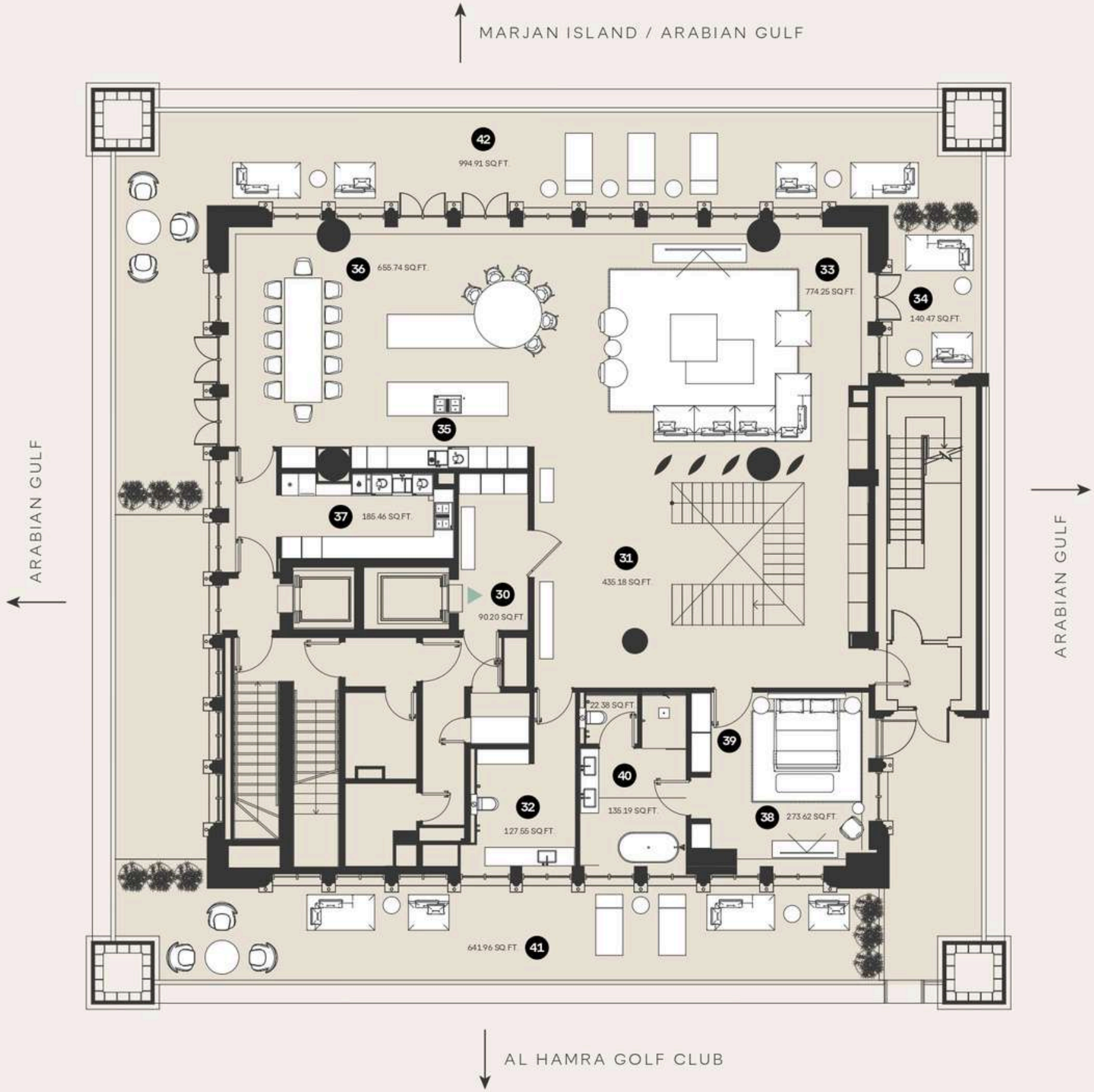
UNIT TYPE
DUPLEX

VIEWS
360 VIEWS

FLOORS
18TH

EXPLICATION OF PREMISES

- 30 FOYER
- 31 HALL
- 32 POWDER ROOM
- 33 LIVING AREA
- 34 LIVING AREA TERRACE
- 35 KITCHEN AREA / BREAKFAST COUNTER
- 36 DINING AREA
- 37 PREP KITCHEN
- 38 BEDROOM 5
- 39 BEDROOM 5 CLOSET
- 40 BATHROOM 5
- 41 PANORAMIC TERRACE 1
- 42 PANORAMIC TERRACE 2



NUMBER OF UNITS: 1
STARTING PRICE: AED 77,952,888

ARTIST RENDERINGS: the artist representations and interior decorations, finishes, appliances and furnishings are provided for illustrative purposes only. The Developer makes no representations or warranties except as set forth in the sales agreement. Developer reserves the right to substitute materials, appliances, equipment, fixtures and other construction and design details specified herein with similar materials, appliances, equipment and/or fixtures of substantially equal or better quality. Developer reserves the right to make changes in accordance with the terms of the Offering Plan. The use of any designations, labels or nomenclature is for marketing purposes only.





Where Prestige Meets Property



At Majara Luxury Real Estate L.L.C., we redefine the art of luxury living. Based in the heart of the UAE, we specialize in curating exceptional real estate experiences tailored to the needs of discerning investors, end-users, and global clientele.



With a refined portfolio of premium properties across all seven Emirates, our expertise lies in both off-plan and ready-to-move assets, offering opportunities that blend architectural excellence with investment potential.



We are more than just property consultants & we are partners in your journey to finding the perfect home, investment, or lifestyle. Driven by integrity, market insight, and personalized service, Majara stands as a trusted name in an ever-evolving market.

Contact Us :

Phone: +971564452803

Email: info@majararealestate.com

<https://majararealestate.com/>