

VERDANA

Discover Verdana VI at Dubai Investment Park – Where Comfort Meets Style.

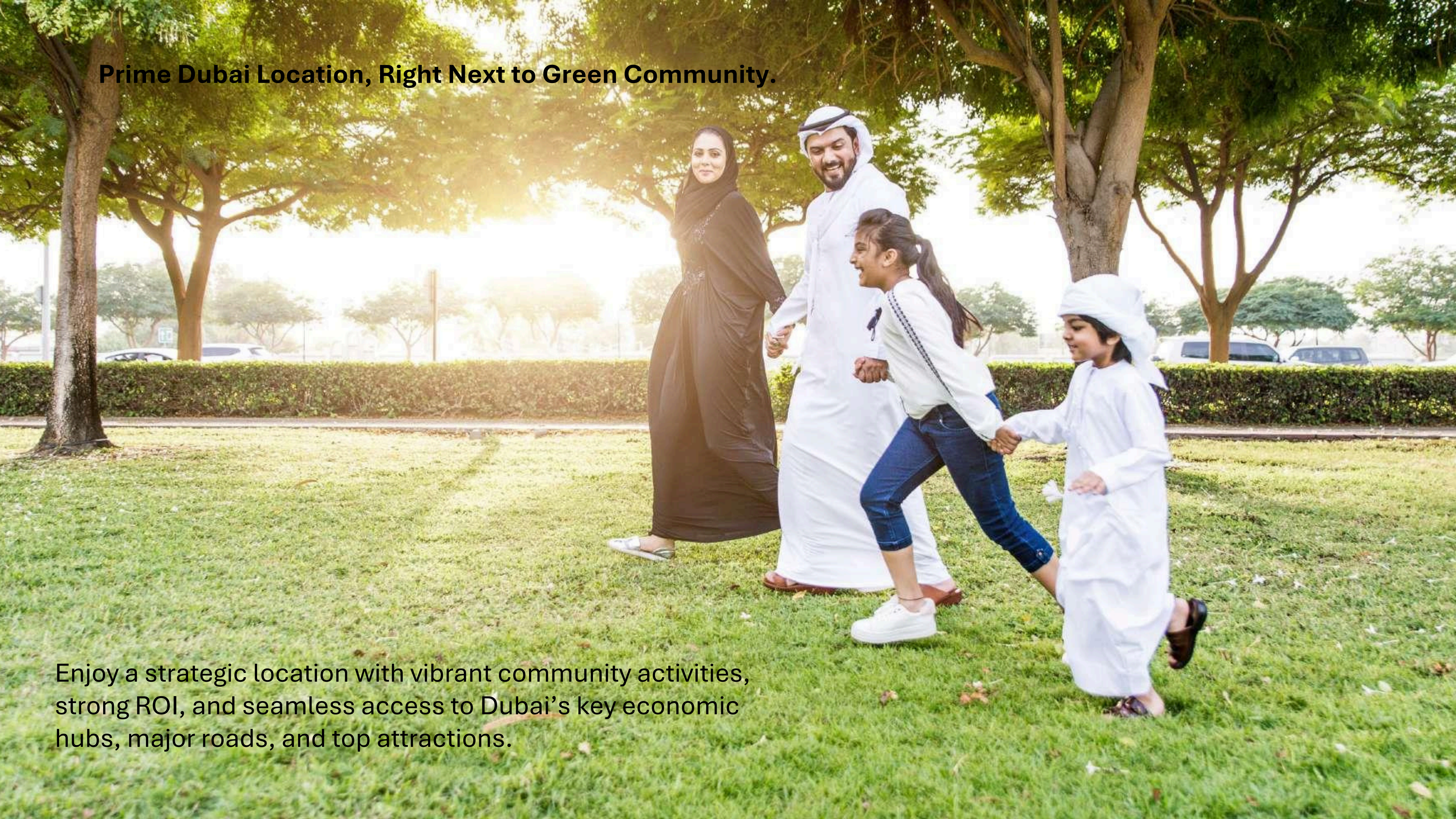
MAJARA LUXURY REAL ESTATE LLC

Head Office Level 36-01, Po Box :124382 , Trade Center 1, Sheikh Zayed Road , Burj Al Salam Tower Dubai UAE



Majara unveils verdana VI residence – luxury living at Dubai Investment Park

Prime Dubai Location, Right Next to Green Community.



Enjoy a strategic location with vibrant community activities, strong ROI, and seamless access to Dubai's key economic hubs, major roads, and top attractions.

An aerial night-time rendering of the Verdana VI residential complex. The image shows a large, modern building with a grid-like facade of lit windows, situated next to a multi-lane highway with light trails. The development is integrated with lush greenery, including palm trees and dense foliage. A winding road or path is visible, and a body of water is seen in the lower right corner. The overall scene is illuminated by the warm lights of the buildings and the cool blues of the night sky.

VERDANA VI

Following the success of its previous phases, Verdana offers 280 townhouses and 363 apartments, blending modern elegance with nature. This integrated community features exceptional facilities in a serene yet central location—luxury living at its finest

A LUCID EXPRESSION
OF NATURE, SPELT IN
MODERNITY



**AN INTEGRATED
COMMUNITY AND A
WHOLE SPECTRUM OF
OPTIONS**



A LUXURY COLLECTION
OF TOWNHOUSES AND
APARTMENTS

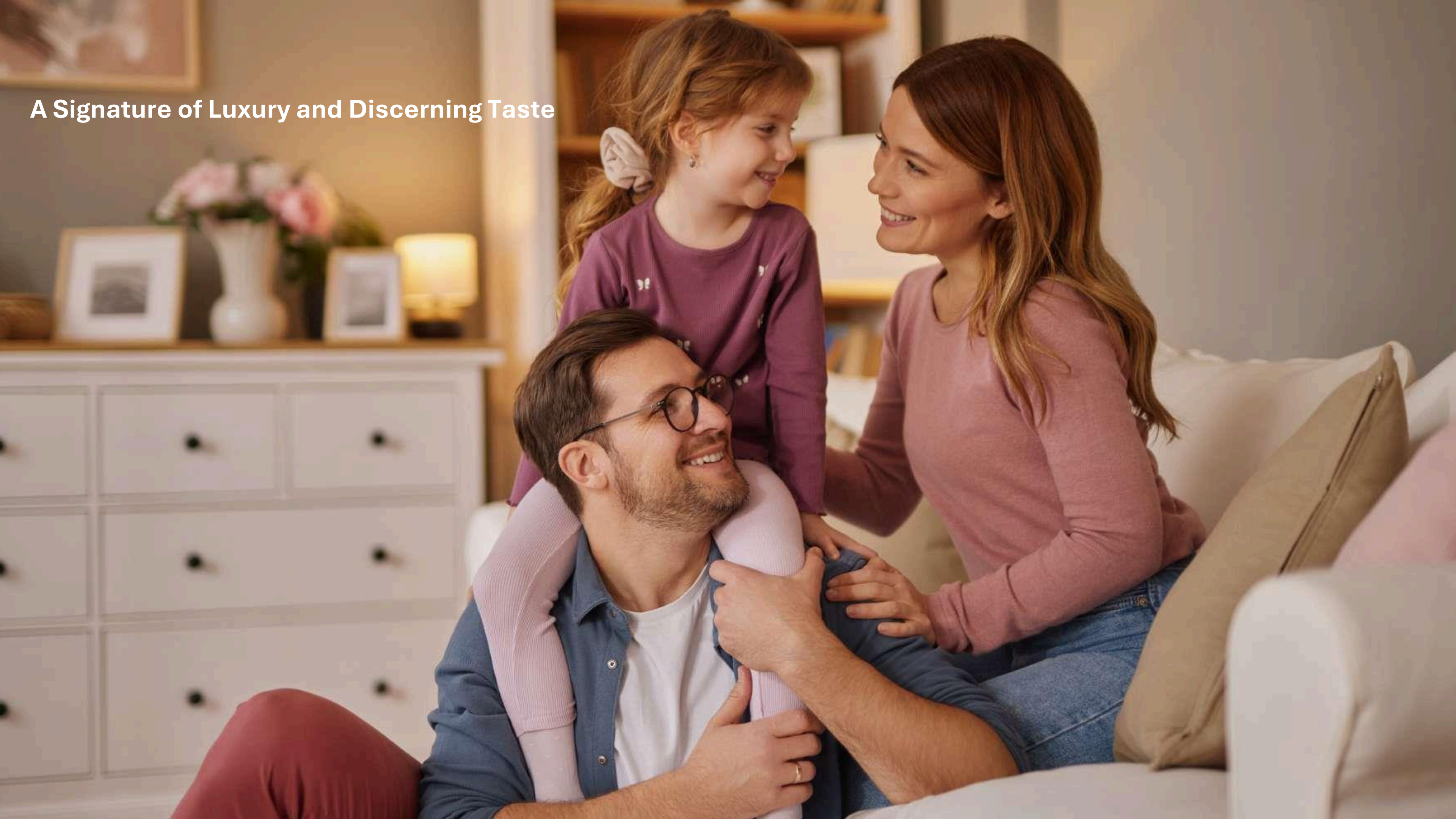




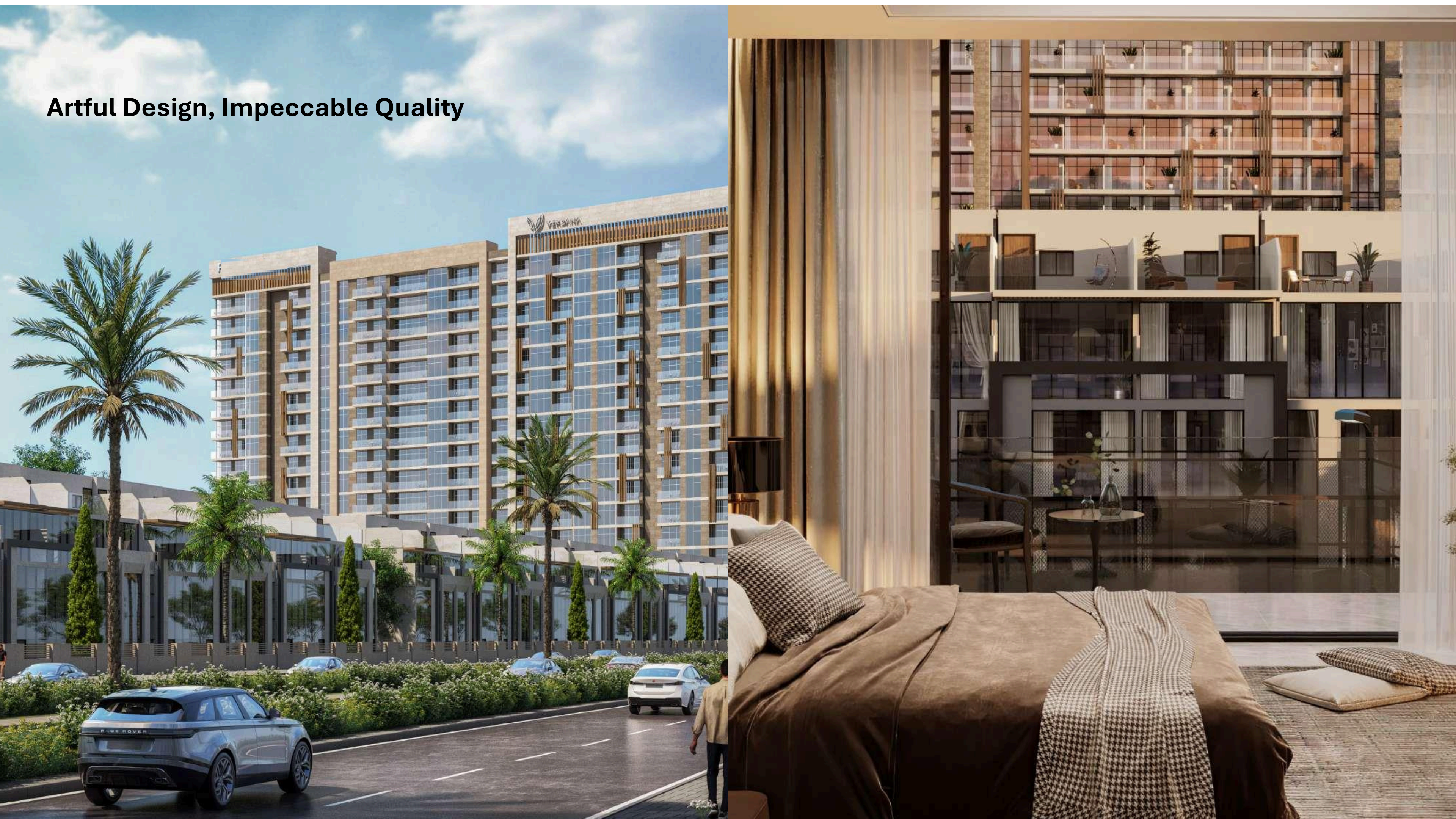
**SWIMMING POOLS, GYMNASIUMS,
PLAY AREAS, AND MORE..**



A Signature of Luxury and Discerning Taste



Artful Design, Impeccable Quality



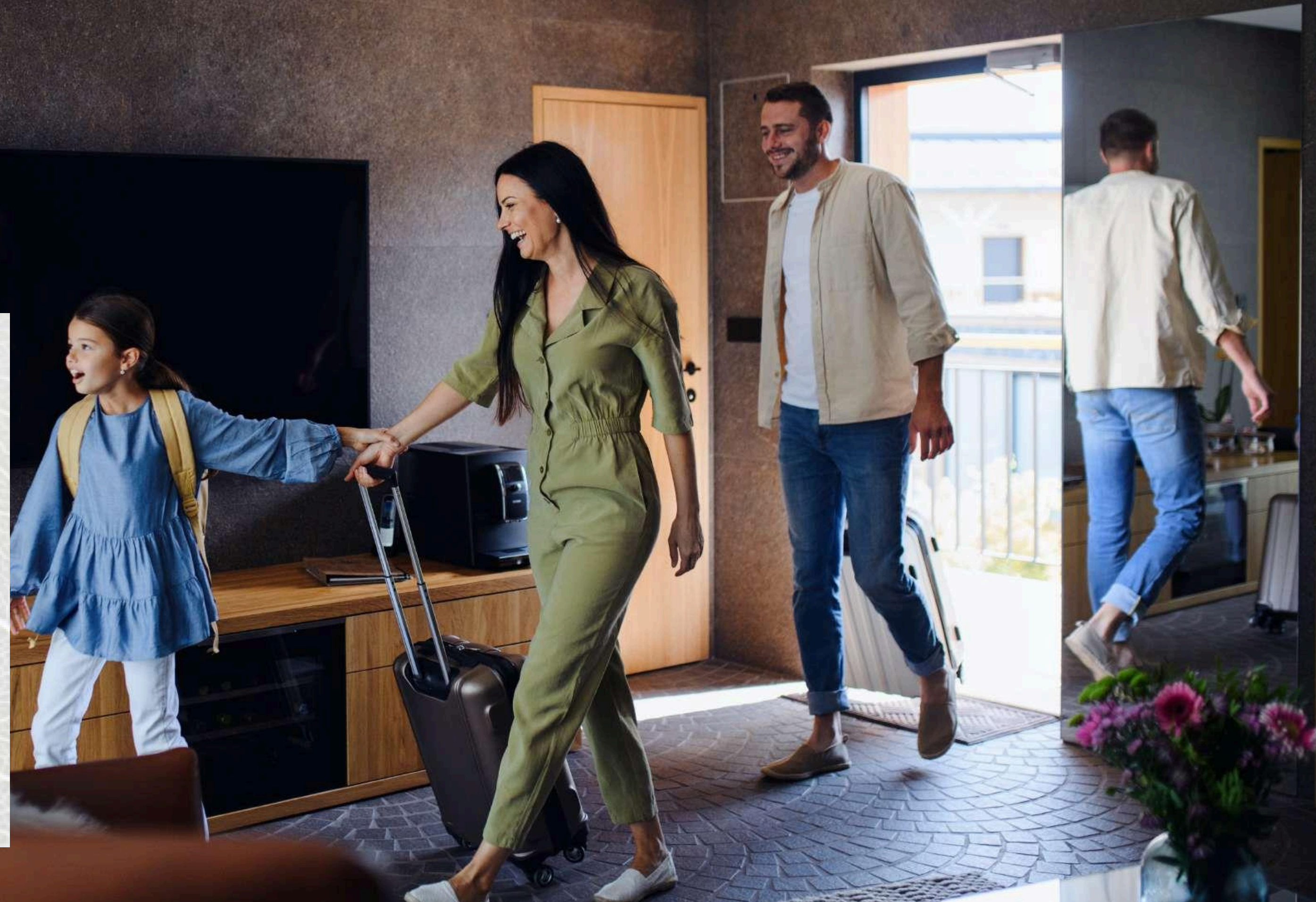


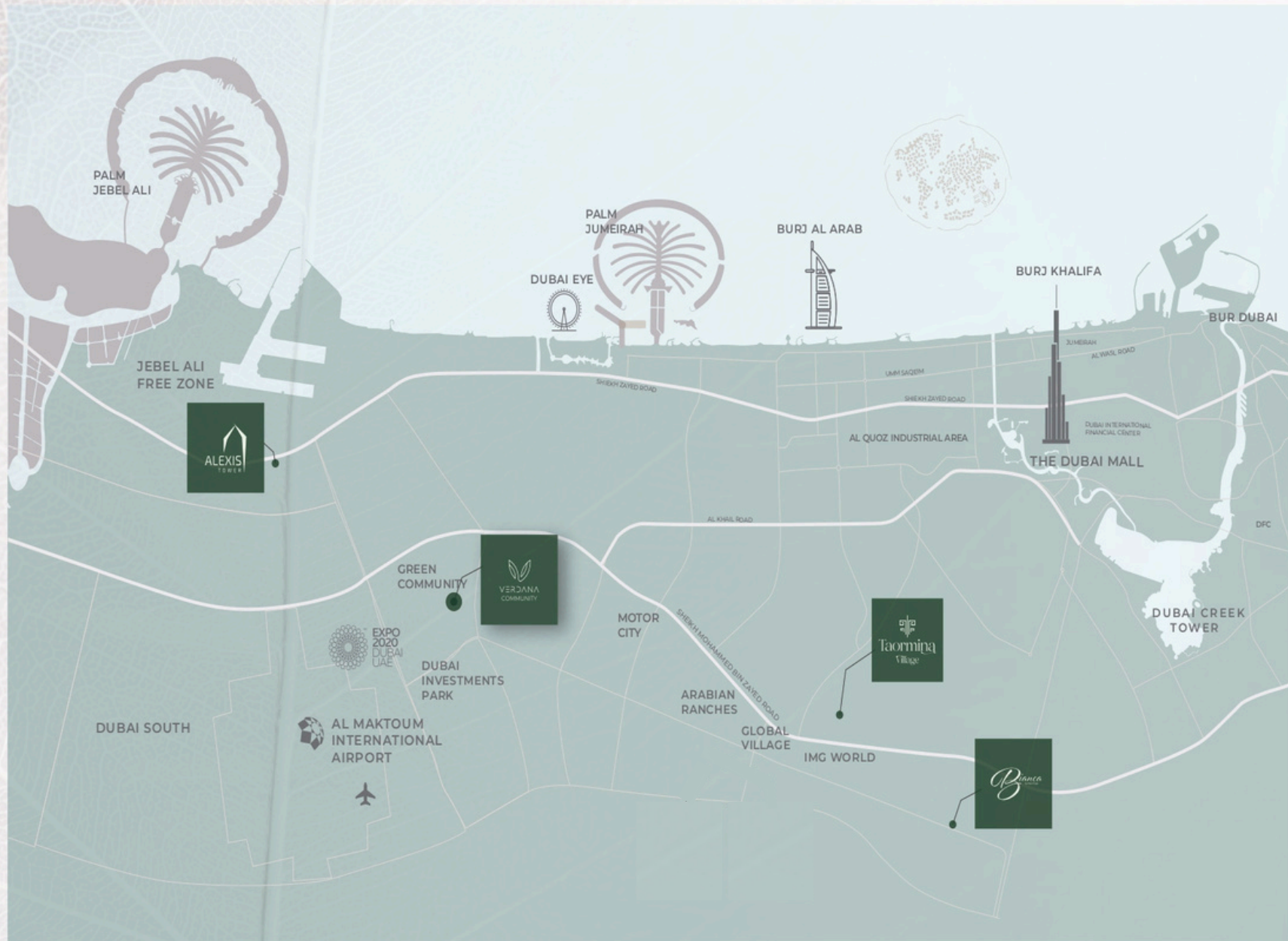
WORLD-CLASS AMENITIES

- Private Parking slots for each unit
- Large Swimming Pool
- Kids' Swimming Pool
- Gymnasium
- Clubhouse
- Shaded Seating Areas
- Landscape Areas
- Large Elevators
- Kids Play Area
- مواقف سيارات خاصة لكل وحدة
- حمام سباحة كبير
- حمام سباحة للأطفال
- صالة ألعاب رياضية
- كلوب هاوس
- مناطق جلوس مظلة
- مساحات خضراء
- مصاعد كبيرة
- منطقة للعب الأطفال

UNIT FEATURES

- Private Balconies / Terraces as per unit plan
- Kitchen cabinets and countertops
- Fully tiled bathrooms
- Vanity units & Mirrors
- Air conditioning
- Built-in wardrobes in bedrooms
- Some bedrooms with private bathroom
- Laundry & Maid Room in some townhouses
- Double Height Living room in some townhouses
- Sky roof in some townhouses





- 11** minutes driving to Expo City
- 18** minutes driving to Dubai Marina
- 18** minutes driving to Dubai Park and Resorts
- 20** minutes driving to Palm Jumeirah
- 21** minutes driving to Global Village
- 23** minutes driving to Mall of The Emirates
- 24** minutes driving to IMG World
- 26** minutes driving to Burj Khalifa/Dubai Mall

WHERE THE WORLD IS YOUR
BACKDROP
STRATEGICALLY LOCATED IN THE HEART OF DUBAI

حيث العالم بأكمله
خلفية من حولك
موقع متميز في قلب دبي

TOWNHOUSES

- 110 تاون هاوس غرفتين
Two Bedroom Townhouses
- 32 تاون هاوس ثلاث غرف
Three Bedroom Townhouses
- 138 تاون هاوس أربع غرف
Four Bedroom Townhouses

TOTAL UNITS 280

إجمالي عدد الوحدات: 280

RESIDENCE

- 110 شقة استوديو
Studio Apartments
- 110 شقة غرفة واحدة
One Bedroom Apartments
- 98 شقة غرفتين
Two Bedroom Apartments
- 15 شقة ثلاث غرف
Three Bedroom Apartments
- 30 شقة أربع غرف
Four Bedroom Apartments

TOTAL UNITS 363

إجمالي عدد الوحدات: 363

مزيج الوحدات UNIT MIX



تفاصيل المشروع

النوع: تاون هاوس & شقق
مساحة الأرض: 54,870.52 متر مربع
إجمالي عدد الوحدات: 280 تاون هاوس + 363 شقة

PROJECT DETAILS

Type: Townhouses & Apartments
Plot Area: 54,870.52 sq.m.
Total Units: 280 Townhouses + 363 Apartments

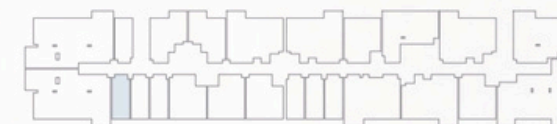


UNIT TYPES

All drawings and dimensions are approximate. Drawings are not to scale and are subject to change without notice. The developer reserves the right to make revisions. The units are measured at typical floors in the building and columns may vary in size depending on the floor level. The furnishing and accessories shown are for representation only. The availability, length and width of the balcony varies depending on which floor and which orientation the unit is located within the building. There will be slight differences in the internal areas between the same unit types depending on the shaft sizes that go through the units.

ST | Type A

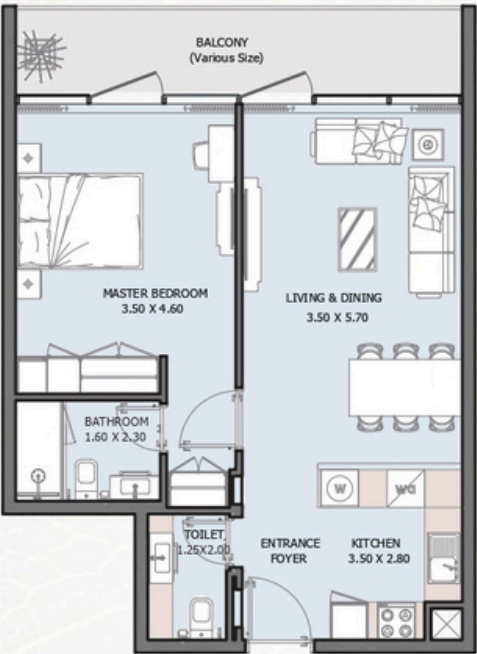
FROM 1st TO 15th FLOOR



| | |
|---------------|------------------------|
| Internal Area | 336.59 sq.ft |
| Outdoor Area | 29.81 to 155.96 sq.ft |
| Total Area | 366.40 to 492.56 sq.ft |

1B | Type A

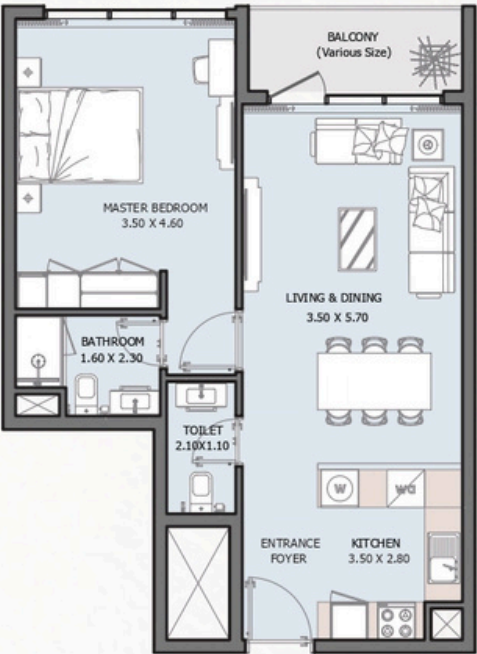
FROM 1st TO 15th FLOOR



| | |
|---------------|------------------------|
| Internal Area | 637.22 sq.ft |
| Outdoor Area | 60.27 to 309.13 sq.ft |
| Total Area | 697.50 to 946.36 sq.ft |

1B | Type B

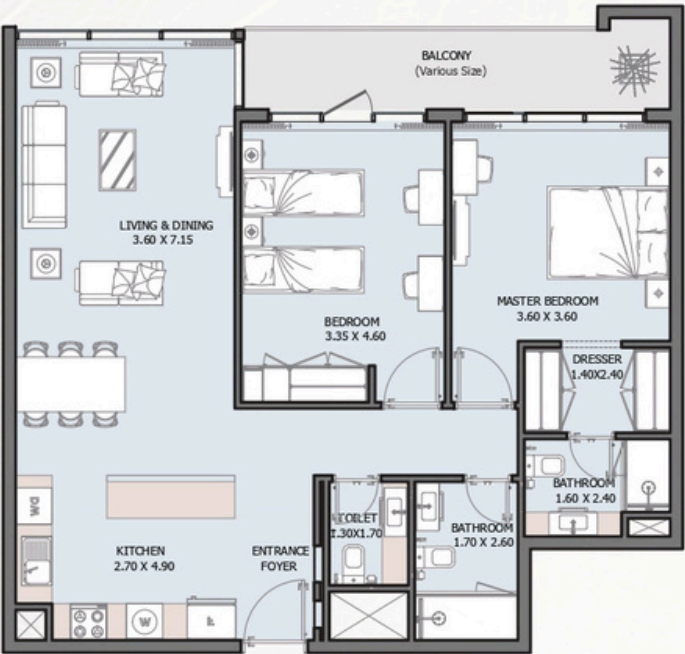
FROM 1st TO 15th FLOOR



| | |
|---------------|------------------------|
| Internal Area | 620 sq.ft |
| Outdoor Area | 50.80 to 252.19 sq.ft |
| Total Area | 670.81 to 872.20 sq.ft |

2B | Type A

FROM 1st TO 15th FLOOR



| | |
|---------------|--------------------------|
| Internal Area | 1025.15 sq.ft |
| Outdoor Area | 68.99 to 402.03 sq.ft |
| Total Area | 1094.15 to 1427.19 sq.ft |

2B | Type B

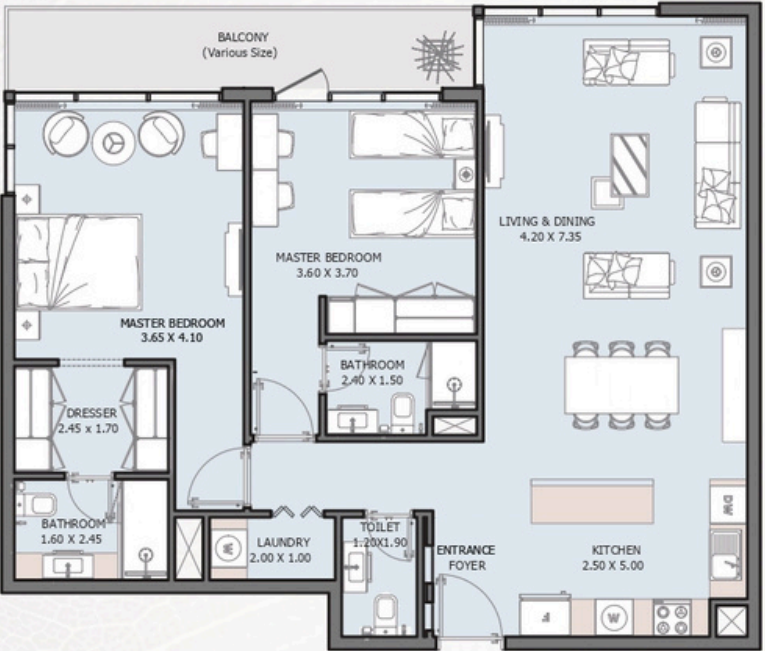
FROM 1st TO 15th FLOOR



| | |
|---------------|-------------------------|
| Internal Area | 897.60 sq.ft |
| Outdoor Area | 81.80 to 294.71 sq.ft |
| Total Area | 979.41 to 1192.32 sq.ft |

2B | Type C

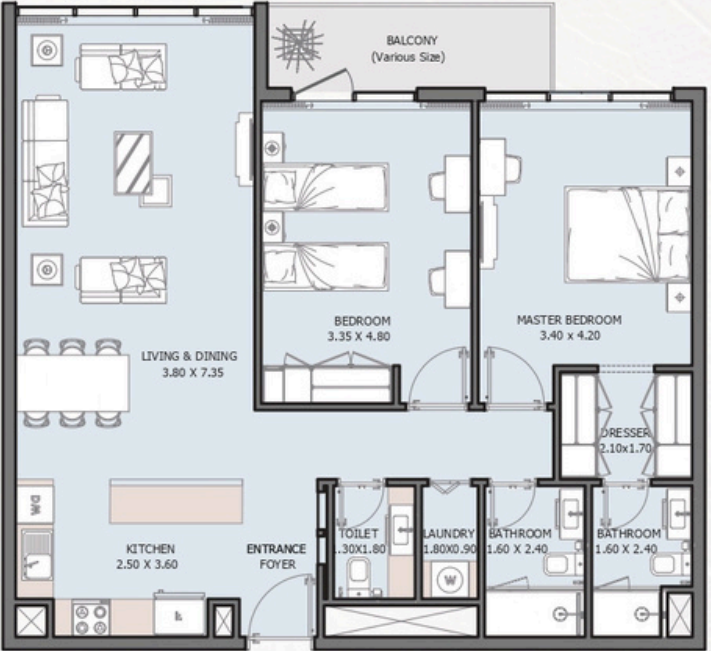
FROM 1st TO 15th FLOOR



| | |
|---------------|--------------------------|
| Internal Area | 1132.36 sq.ft |
| Outdoor Area | 108.93 to 433.24 sq.ft |
| Total Area | 1241.29 to 1565.61 sq.ft |

2B | Type D

FROM 1st TO 10th FLOOR



| | |
|---------------|--------------------------|
| Internal Area | 1066.59 sq.ft |
| Outdoor Area | 66.06 to 318.61 sq.ft |
| Total Area | 1132.69 to 1385.21 sq.ft |

3B | Type A

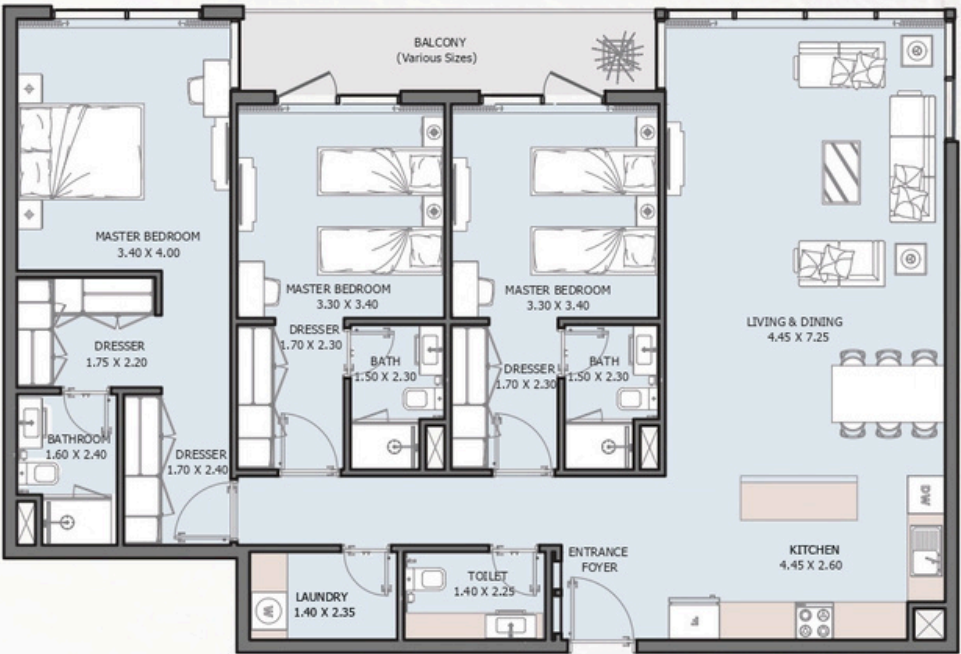
FROM 1st TO 15th FLOOR



| | |
|---------------|--------------------------|
| Internal Area | 1621.80 sq.ft |
| Outdoor Area | 95.79 to 400.30 sq.ft |
| Total Area | 1717.60 to 2022.11 sq.ft |

3B | Type B

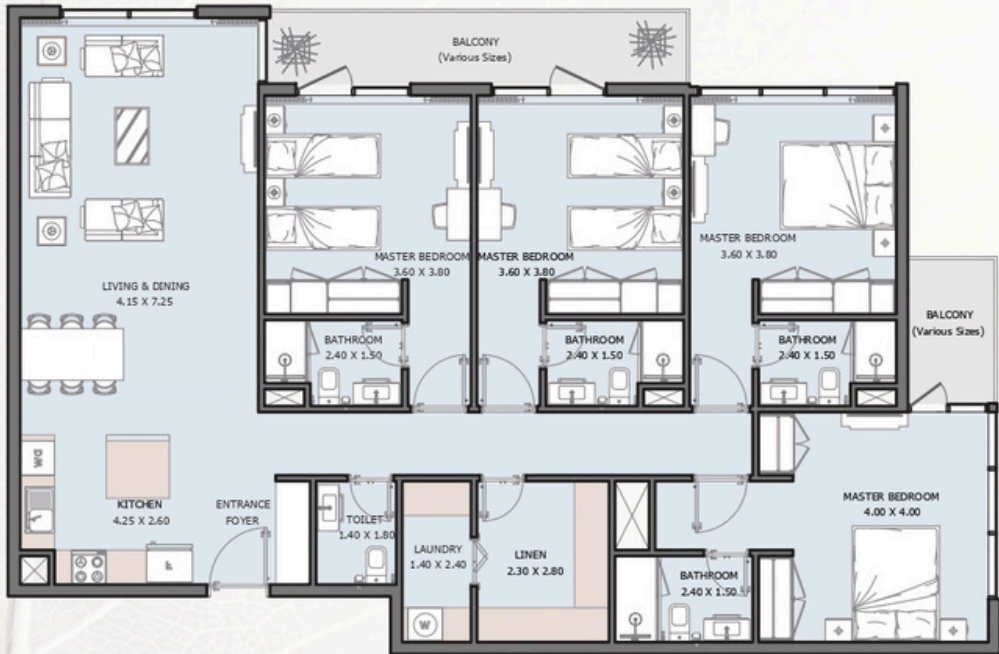
9th FLOOR



| | |
|---------------|---------------|
| Internal Area | 1473.15 sq.ft |
| Outdoor Area | 95.79 sq.ft |
| Total Area | 1568.95 sq.ft |

4B | Type A

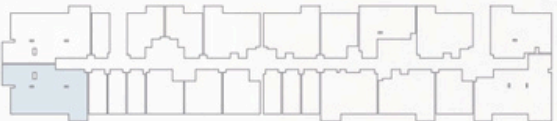
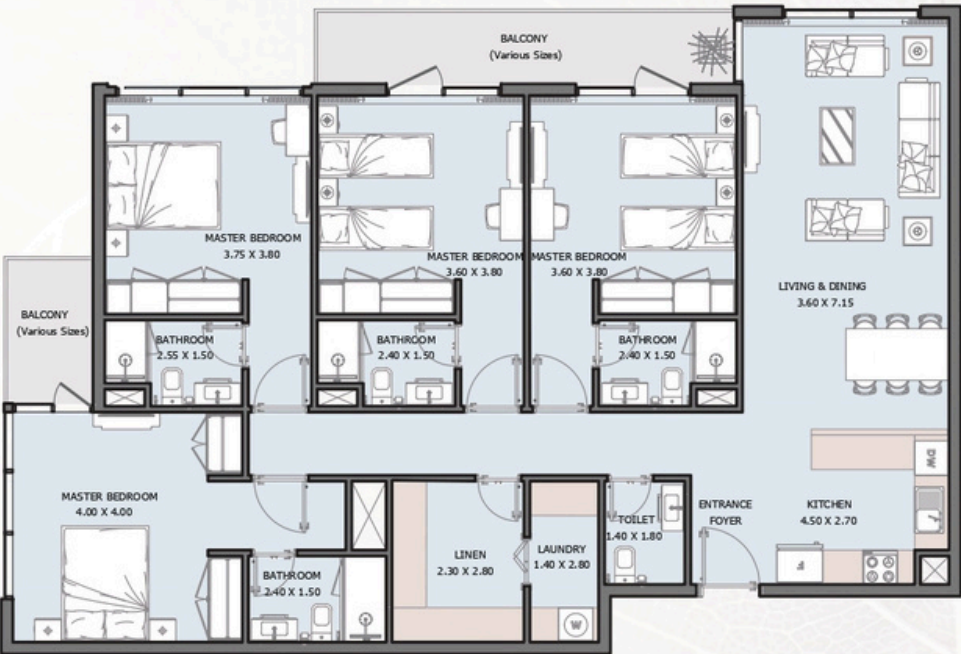
FROM 1st TO 15th FLOOR



| | |
|---------------|--------------------------|
| Internal Area | 1679.17 sq.ft |
| Outdoor Area | 148.43 to 1068.74 sq.ft |
| Total Area | 1827.60 to 2747.92 sq.ft |

4B | Type B

FROM 1st TO 15th FLOOR



| | |
|---------------|--------------------------|
| Internal Area | 1618.35 sq.ft |
| Outdoor Area | 150.47 to 580.71 sq.ft |
| Total Area | 1768.83 to 2199.06 sq.ft |

2B | Townhouse

Type A



GROUND FLOOR

1ST FLOOR

| | |
|---------------|--------------------------|
| Internal Area | 1154.75 sq.ft |
| Outdoor Area | 610.31 to 1067.02 sq.ft |
| Total Area | 1765.06 to 2221.77 sq.ft |

3B | Townhouse

Type A



GROUND FLOOR

1ST FLOOR

2ND FLOOR

| | |
|---------------|--------------------------|
| Internal Area | 1647.85 sq.ft |
| Outdoor Area | 2005.74 to 2752.00 sq.ft |
| Total Area | 3653.59 to 4399.85 sq.ft |

3B | Townhouse

Type B



| | |
|---------------|--------------------------|
| Internal Area | 1550.32 sq.ft |
| Outdoor Area | 1004.27 to 1430.84 sq.ft |
| Total Area | 2554.59 to 2981.16 sq.ft |

4B | Townhouse

Type A



| | |
|---------------|--------------------------|
| Internal Area | 2292.50 sq.ft |
| Outdoor Area | 975.10 to 2011.01 sq.ft |
| Total Area | 3267.59 to 4080.37 sq.ft |



Where Prestige Meets Property



At Majara Luxury Real Estate L.L.C., we redefine the art of luxury living. Based in the heart of the UAE, we specialize in curating exceptional real estate experiences tailored to the needs of discerning investors, end-users, and global clientele.



With a refined portfolio of premium properties across all seven Emirates, our expertise lies in both off-plan and ready-to-move assets, offering opportunities that blend architectural excellence with investment potential.



We are more than just property consultants & we are partners in your journey to finding the perfect home, investment, or lifestyle. Driven by integrity, market insight, and personalized service, Majara stands as a trusted name in an ever-evolving market.

Contact Us :

Phone: +971564452803

Email: info@majararealestate.com

<https://majararealestate.com/>