

VERDANA

Introducing Verdana V Residence : Elegance, Comfort, and Style.

MAJARA LUXURY REAL ESTATE LLC

Head Office Level 36-01, Po Box :124382 , Trade Center 1, Sheikh Zayed Road , Burj Al Salam Tower Dubai UAE

Majara unveils Verdana V Residence – Luxury living at Dubai Investment Park.

Prime Dubai Location, Right Next to Green Community.

Enjoy a strategic location with vibrant community activities, strong ROI, and seamless access to Dubai's key economic hubs, major roads, and top attractions.

VERDANA V



Following the success of its previous phases, Verdana offers 271 townhouses and 392 apartments, blending modern elegance with nature. This integrated community features exceptional facilities in a serene yet central location—luxury living at its finest.”



Nature Perfectly Interpreted Through Modern Design



A Harmonious Community with Something for Everyone.



A LUXURY COLLECTION
OF TOWNHOUSES AND
APARTMENTS



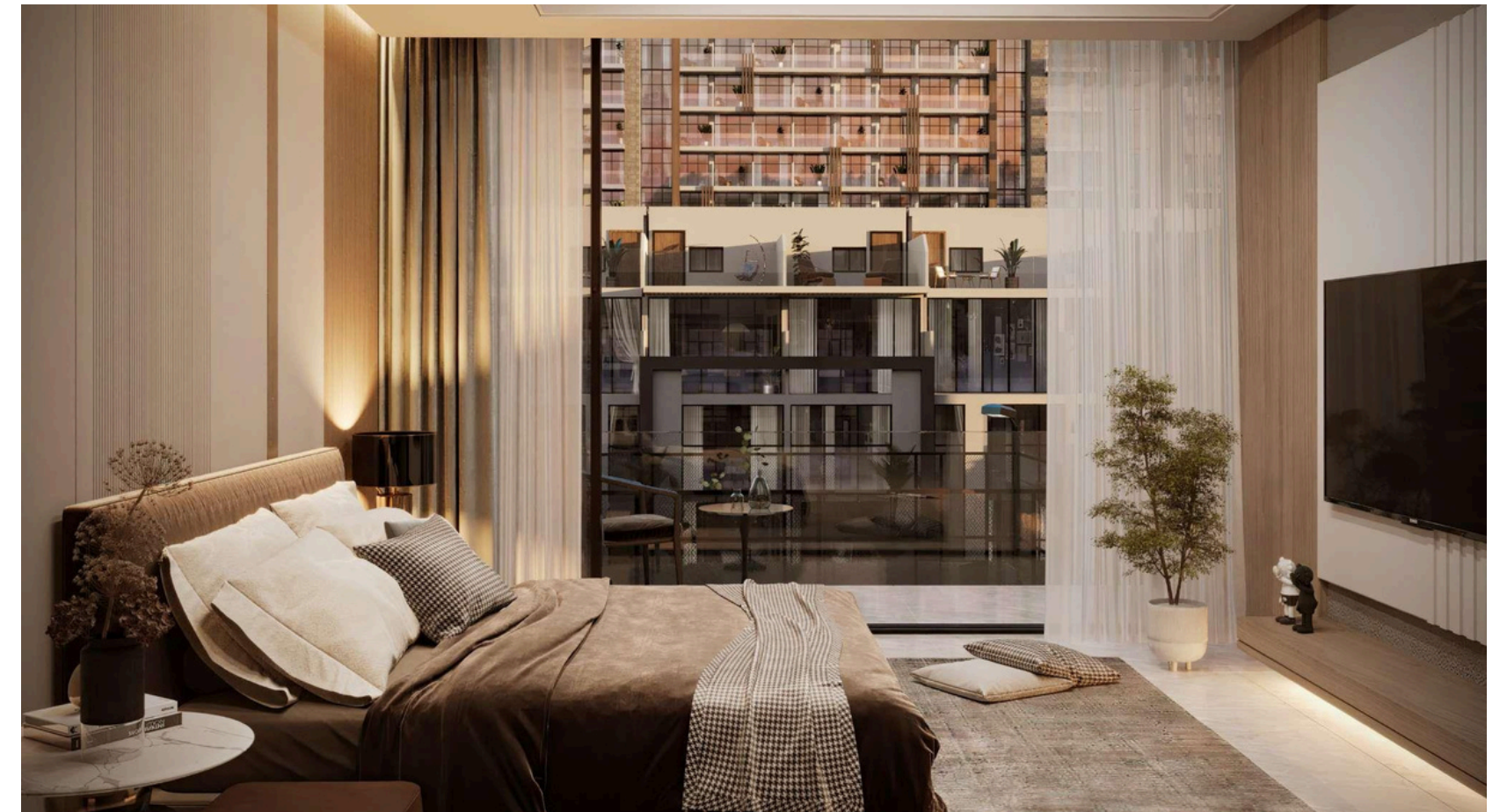
SWIMMING POOLS, GYMNASIUMS,
PLAY AREAS, AND MORE

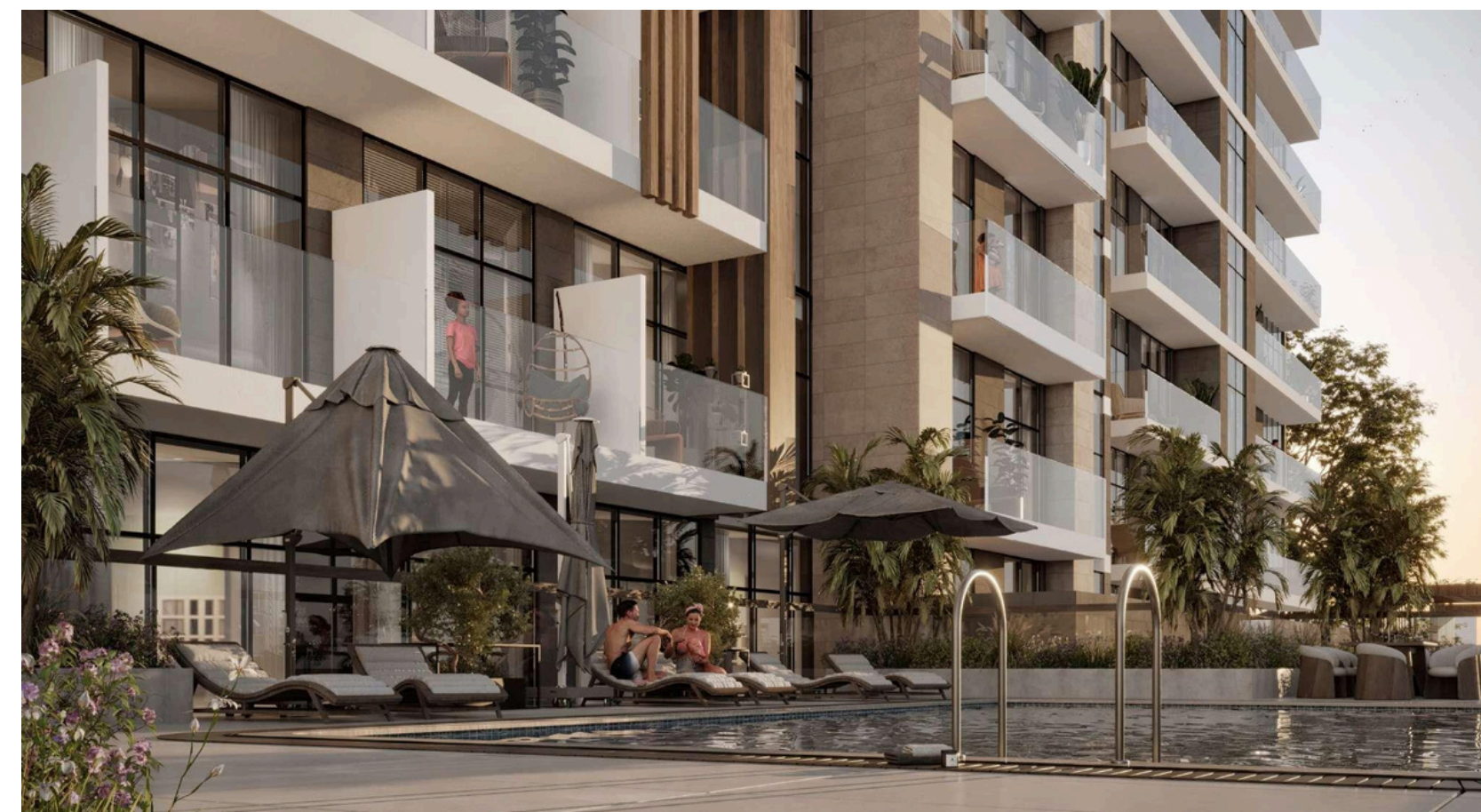


**A FINGERPRINT OF
OPULENCE AND
REFINED TASTE**



Where Evergreen Inspiration Blends with Exceptional Design and Quality





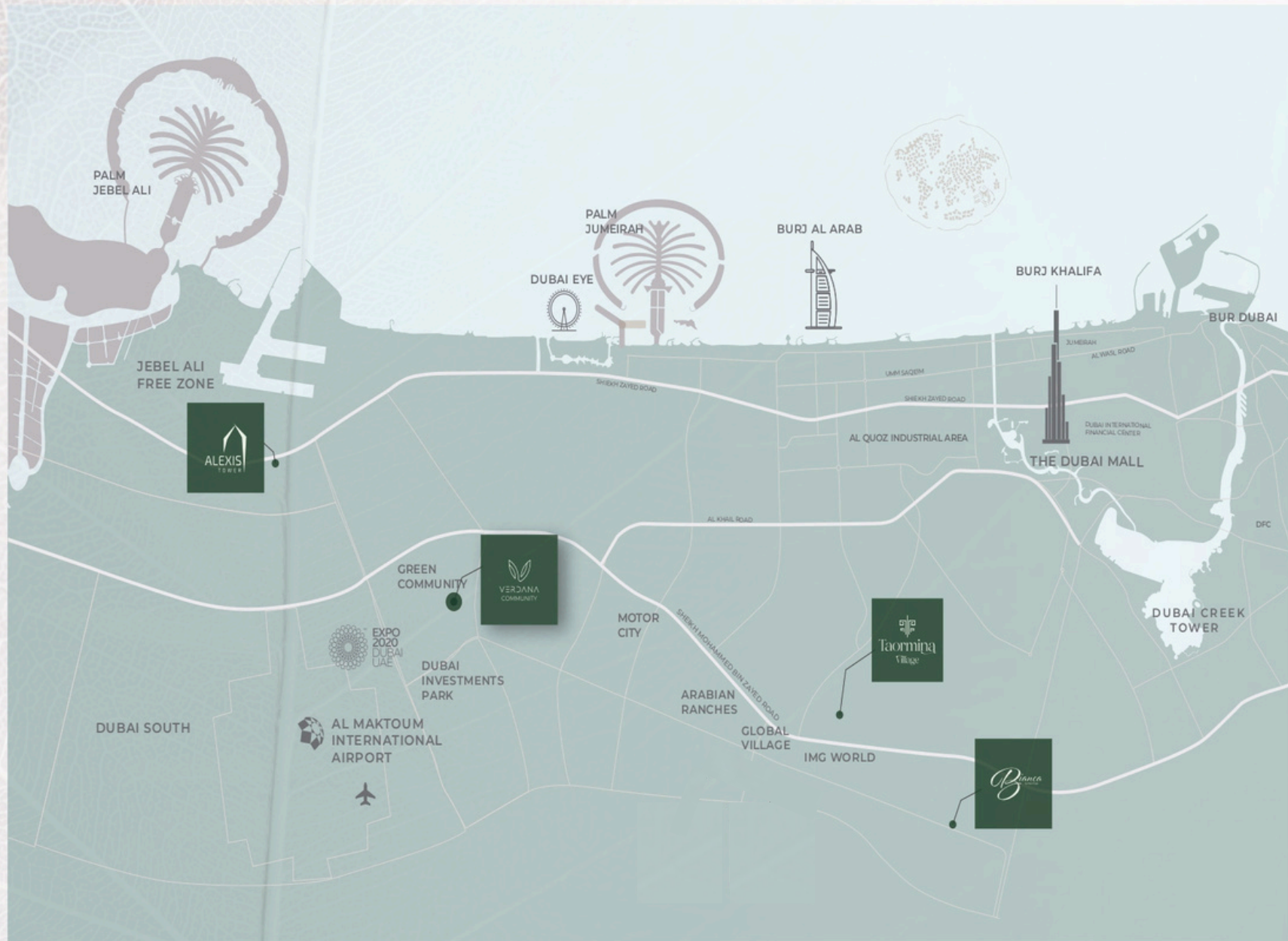
WORLD-CLASS AMENITIES

- Private Parking slots for each unit
- Large Swimming Pool
- Kids' Swimming Pool
- Gymnasium
- Clubhouse
- Shaded Seating Areas
- Landscape Areas
- 6 Large Elevators
- Kids Play Area
- BBQ stations
- مواقف سيارات خاصة لكل وحدة
- حمام سباحة كبير
- حمام سباحة للأطفال
- صالة ألعاب رياضية
- كلوب هاوس
- مناطق جلوس مظلة
- مساحات خضراء
- 6 مصاعد كبيرة
- مناطق لعب للأطفال
- مناطق للشواء



UNIT FEATURES

- Private Balconies / Terraces as per unit plan
- Kitchen cabinets and countertops
- Fully tiled bathrooms
- Vanity units & Mirrors
- Air conditioning
- Built-in wardrobes in bedrooms
- Some bedrooms with private bathroom
- Laundry & Maid Room in some townhouses
- Double Height Living room in some townhouses
- Sky roof in some townhouses
- Some townhouses with internal elevator



- 11** minutes driving to Expo City
- 18** minutes driving to Dubai Marina
- 18** minutes driving to Dubai Park and Resorts
- 20** minutes driving to Palm Jumeirah
- 21** minutes driving to Global Village
- 23** minutes driving to Mall of The Emirates
- 24** minutes driving to IMG World
- 26** minutes driving to Burj Khalifa/Dubai Mall

WHERE THE WORLD IS YOUR
BACKDROP
STRATEGICALLY LOCATED IN THE HEART OF DUBAI

حيث العالم بأكمله
خلفية من حولك
موقع متميز في قلب دبي

TOWNHOUSES

- 74 تاون هاوس غرفتين
Two Bedroom Townhouses
- 47 تاون هاوس ثلاث غرف
Three Bedroom Townhouses
- 150 تاون هاوس أربع غرف
Four Bedroom Townhouses

TOTAL UNITS 271

إجمالي عدد الوحدات: 271

RESIDENCE

- 119 شقة استوديو
Studio Apartments
- 119 شقة غرفة واحدة
One Bedroom Apartments
- 109 شقة غرفتين
Two Bedroom Apartments
- 15 شقة ثلاث غرف
Three Bedroom Apartments
- 30 شقة أربع غرف
Four Bedroom Apartments

TOTAL UNITS 392

إجمالي عدد الوحدات: 392

مزيج الوحدات UNIT MIX



تفاصيل المشروع

النوع: تاون هاوس & شقق
مساحة الأرض: 54,419.56 متر مربع
إجمالي عدد الوحدات: 271 تاون هاوس + 392 شقة

PROJECT DETAILS

Type: Townhouses & Apartments
Plot Area: 54,419.56 sq.m.
Total Units: 271 Townhouses + 392 Apartments

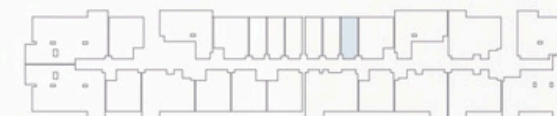


UNIT TYPES

All drawings and dimensions are approximate. Drawings are not to scale and are subject to change without notice. The developer reserves the right to make revisions. The units are measured at typical floors in the building and columns may vary in size depending on the floor level. The furnishing and accessories shown are for representation only. The availability, length and width of the balcony varies depending on which floor and which orientation the unit is located within the building. There will be slight differences in the internal areas between the same unit types depending on the shaft sizes that go through the units.

ST | Type A

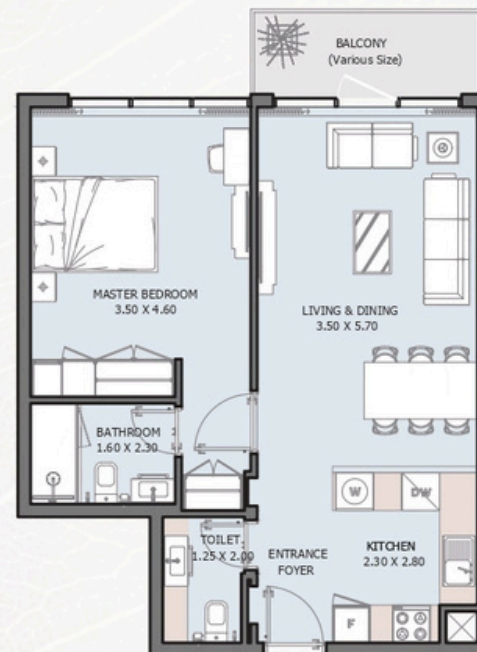
FROM 1st TO 15th FLOOR



Internal Area	336.59 sq.ft
Outdoor Area	26.59 to 154.14 sq.ft
Total Area	363.17 to 490.73 sq.ft

1B | Type A

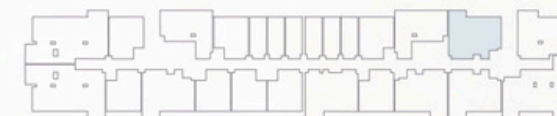
FROM 1st TO 15th FLOOR



Internal Area	637.22 sq.ft
Outdoor Area	39.93 to 317.21 sq.ft
Total Area	677.16 to 954.44 sq.ft

2B | Type A

FROM 1st TO 15th FLOOR



Internal Area	1025.15 sq.ft
Outdoor Area	44.78 to 425.50 sq.ft
Total Area	1069.93 to 1450.65 sq.ft

2B | Type B

FROM 1st TO 15th FLOOR

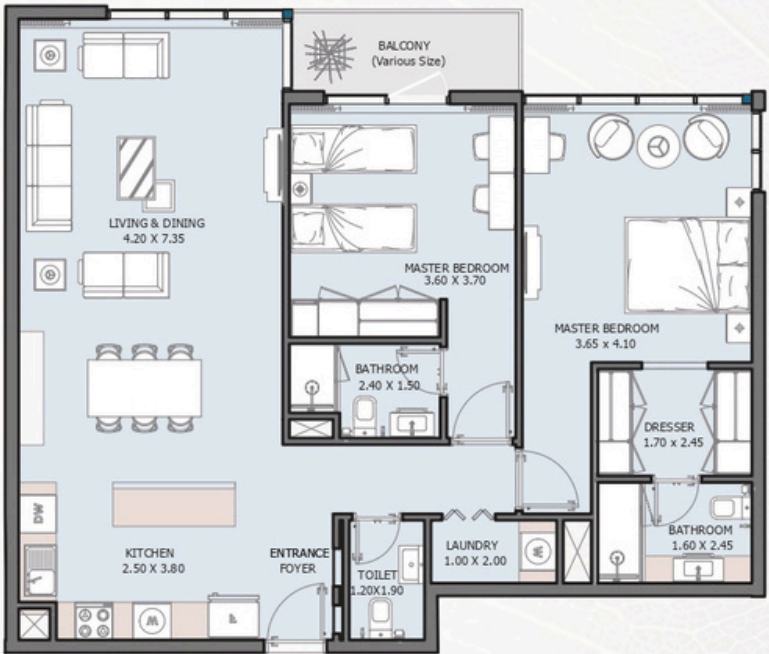


Internal Area	897.60 sq.ft
Outdoor Area	70.83 to 312.15 sq.ft
Total Area	968.43 to 1209.75 sq.ft

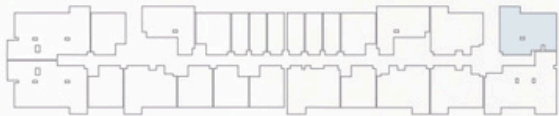


2B | Type C

FROM 1st TO 15th FLOOR

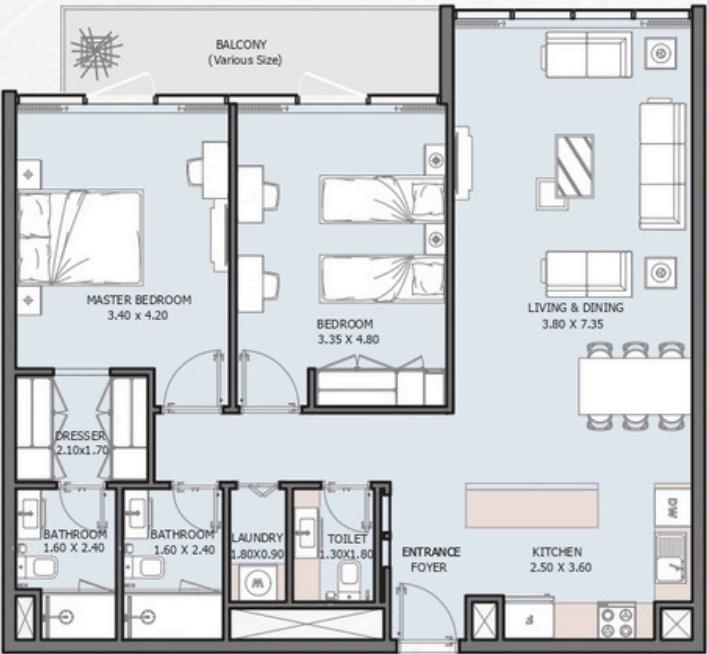


Internal Area	1130.42 sq.ft
Outdoor Area	48.11 to 450.90 sq.ft
Total Area	1178.54 to 1581.32 sq.ft



2B | Type D

FROM 1st TO 4th FLOOR



Internal Area	1066.27 sq.ft
Outdoor Area	83.64 to 239.60 sq.ft
Total Area	1149.91 to 1305.88 sq.ft

3B | Type A

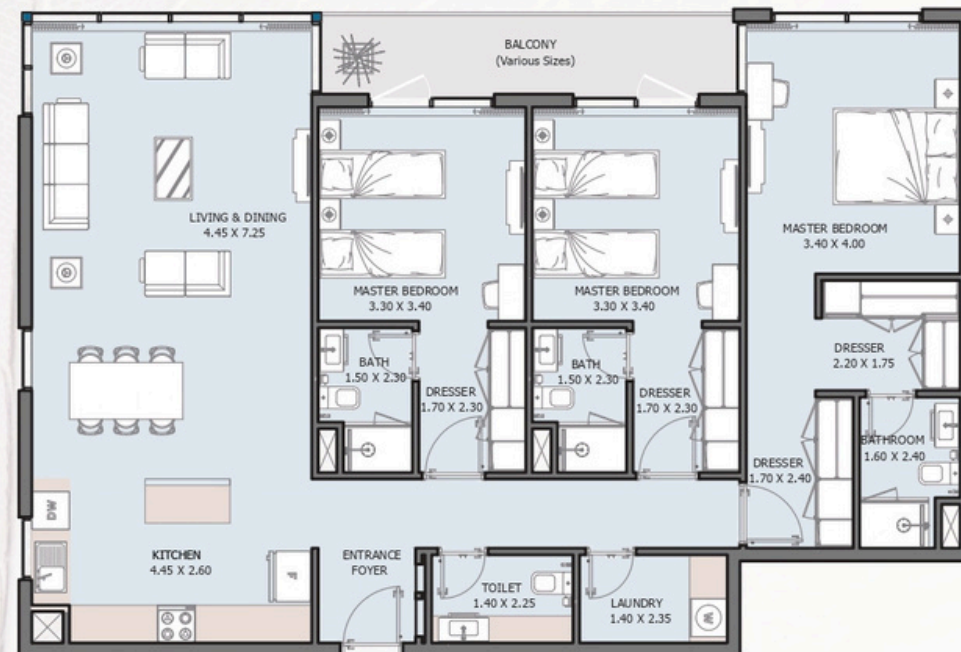
FROM 1st TO 15th FLOOR



Internal Area	1621.80 sq.ft
Outdoor Area	87.83 to 310.32 sq.ft
Total Area	1709.63 to 1932.12 sq.ft

3B | Type B

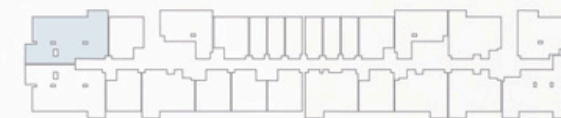
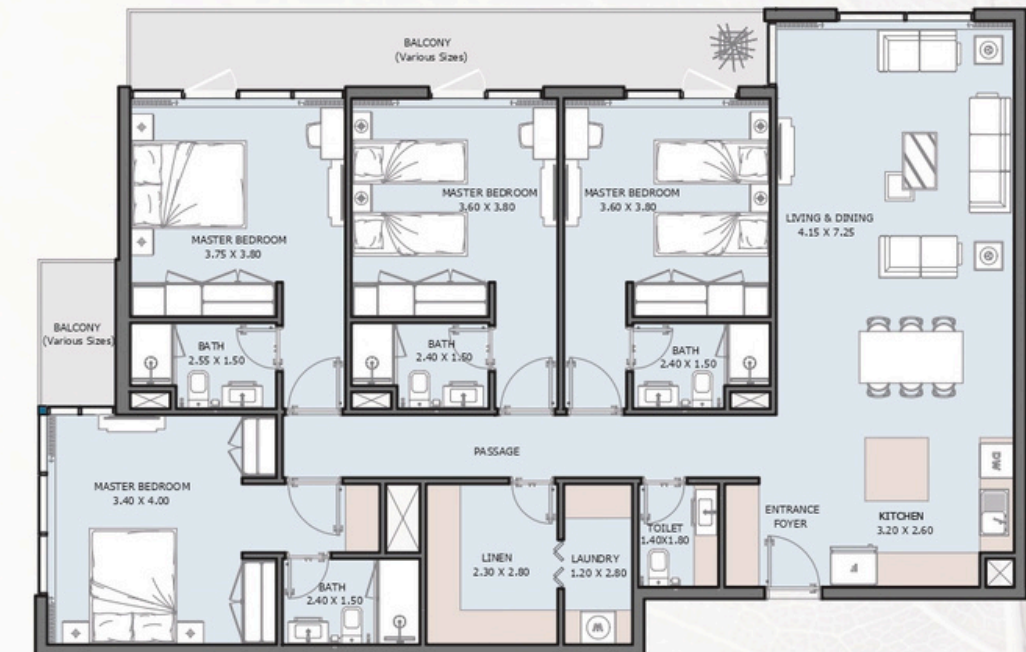
9th FLOOR



Internal Area	1473.15 sq.ft
Outdoor Area	87.83 sq.ft
Total Area	1560.98 sq.ft

4B | Type A

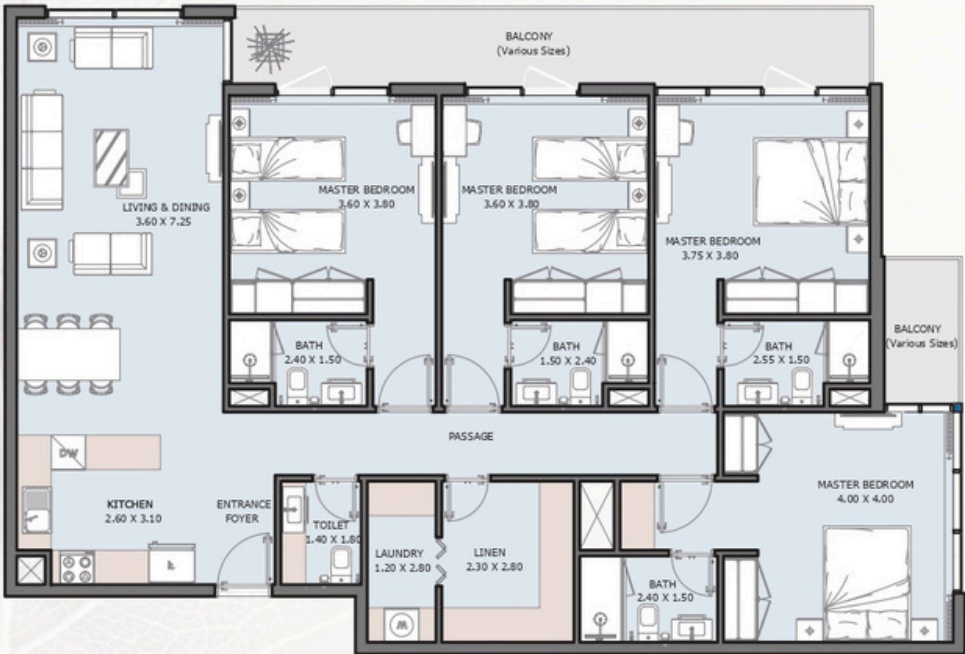
FROM 1st TO 15th FLOOR



Internal Area	1688.10 sq.ft
Outdoor Area	154.57 to 631.41 sq.ft
Total Area	1842.67 to 2319.51 sq.ft

4B | Type B

FROM 1st TO 15th FLOOR



Internal Area	1628.04 sq.ft
Outdoor Area	154.68 to 363.07 sq.ft
Total Area	1782.72 to 1991.11 sq.ft



TOWNHOUSES

2B | Townhouse

TYPE A



Internal Area	1154.75 sq.ft
Outdoor Area	1561.87 to 1081.23 sq.ft
Total Area	1716.62 to 2235.98 sq.ft

3B | Townhouse

TYPE A



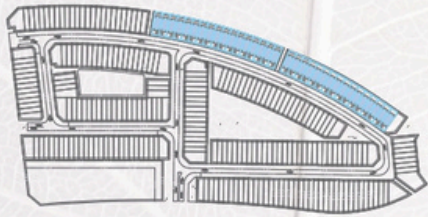
Internal Area	1647.85 sq.ft
Outdoor Area	1781.64 to 3337.13 sq.ft
Total Area	3429.48 to 4984.97 sq.ft

3B | Townhouse

TYPE B



Internal Area	1550.32 sq.ft
Outdoor Area	920.74 to 1369.59 sq.ft
Total Area	2471.06 to 2919.92 sq.ft

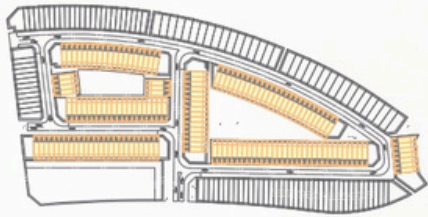


4B | Townhouse

TYPE A



Internal Area	2292.50 sq.ft
Outdoor Area	957.98 to 1866.35 sq.ft
Total Area	3250.48 to 4158.84 sq.ft





Where Prestige Meets Property



At Majara Luxury Real Estate L.L.C., we redefine the art of luxury living. Based in the heart of the UAE, we specialize in curating exceptional real estate experiences tailored to the needs of discerning investors, end-users, and global clientele.



With a refined portfolio of premium properties across all seven Emirates, our expertise lies in both off-plan and ready-to-move assets, offering opportunities that blend architectural excellence with investment potential.



We are more than just property consultants & we are partners in your journey to finding the perfect home, investment, or lifestyle. Driven by integrity, market insight, and personalized service, Majara stands as a trusted name in an ever-evolving market.

Contact Us :

Phone: +971564452803

Email: info@majararealestate.com

<https://majararealestate.com/>