



Experience the Harmony of Nature and Luxury at Taormina Village

MAJARA LUXURY REAL ESTATE LLC

Head Office Level 36-01, Po Box :124382 , Trade Center 1, Sheikh Zayed Road , Burj Al Salam Tower Dubai UAE



Majara Offers Taormina Village: Dubai's Signature Address of Prestige

An aerial architectural rendering of a modern residential development. The scene features several multi-story townhouses with white facades and dark grey accents. The buildings are arranged around a central paved road with yellow lane markings. To the right, there is a landscaped area with a swimming pool, lounge chairs, and a large white umbrella. The area is filled with various trees, including palm trees and trees with orange and pink foliage. People are seen walking on the sidewalks and sitting on the pool deck. The overall atmosphere is one of a luxurious and well-maintained community.

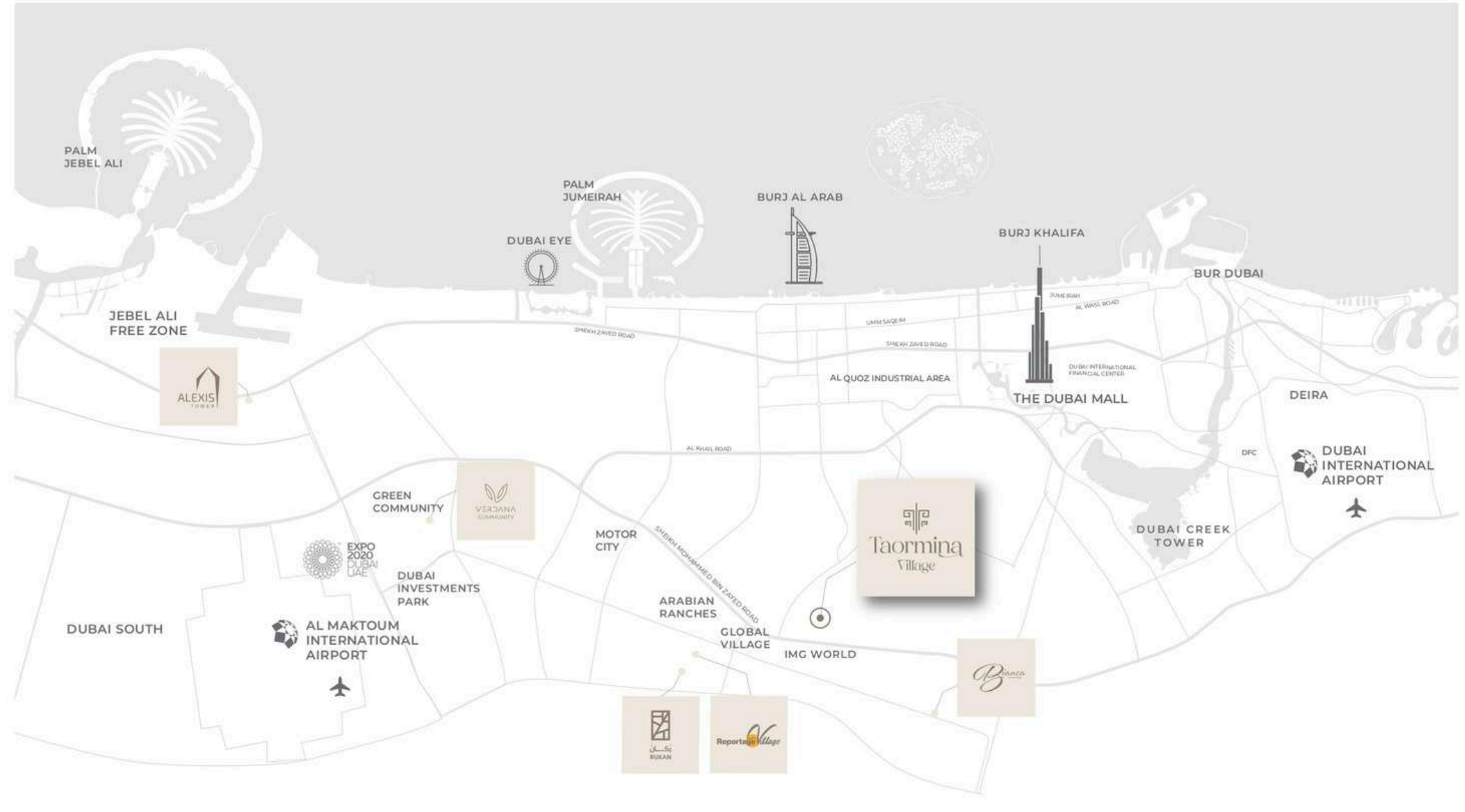
TAORMINA VILLAGE

Taormina Village – an exquisite community of 838 luxury villas and townhouses where simplicity meets sophistication, and every corner tells a unique story. With pristine white facades and the enchanting touch of greenery, Taormina Village offers a lifestyle unlike any other, within an integrated community inspired by your finest dreams.



اختبر رفاهية العيش في أحد أكثر المواقع رواجاً
LIVE THE LUXURY OF A PRIME LOCATION

- 05 minutes driving to Al Barari
- 05 minutes driving to IMG Worlds of Adventure
- 11 minutes driving to Global Village
- 11 minutes driving to Zayed University
- 17 minutes driving to Dubai Hills Mall
- 20 minutes driving to Dubail Mall
- 23 minutes driving to Mall of Emirates



The background of the entire page is a close-up photograph of geological rock formations. The layers of rock are visible, showing a warm, golden-brown color palette. The lighting creates soft shadows and highlights the textures of the rock surfaces, giving it a sense of depth and natural beauty.

DESIGN PHILOSOPHY

Taormina Villas – a masterpiece of modern architecture designed for sustainability and harmony. Featuring striking white facades complemented by vibrant greenery, these villas seamlessly blend indoor and outdoor living. The result is a community where luxury meets nature, offering residents a nurturing environment and a profound connection with the natural world.

A Living Symphony, Inspired by Nature





The Art of Simple Sophistication



Embrace the Fullness of Modern Community Living



Beyond Ordinary—A World of Spectacular Experiences



Experience Luxury as Every Detail Comes to Life



A Place Where Every Corner Has Its Own Story



**Luxury Defined by Timeless Elegance and Exquisite
Finishes**







Luxury Living Perfected with World-Class Amenities

- | | |
|---|---|
| - Private Parking slots for each unit | - مواقف سيارات خاصة لكل وحدة |
| - Large Swimming Pool | - حمام سباحة كبير |
| - Kids' Swimming Pool | - حمام سباحة للأطفال |
| - Gymnasium | - صالة ألعاب رياضية |
| - Yoga Garden | - حديقة يوجا |
| - Shaded Seating Areas | - مناطق جلوس مظلة |
| - Giant Chess Play Area | - منطقة للعب الشطرنج العملاق |
| - Kids' Playgrounds | - مناطق للعب الأطفال |
| - Multi-Sports Court (Croquet Areas-Tennis Court - GYM) | - ملعب رياضات متعددة (كروكيه- تنس - منطقة ألعاب رياضية) |
| - BBQ Stations | - مناطق للشواء |
| - Landscape Areas | - مساحات خضراء |
| - Jogging Track | - مسار للركض |
| - Mosque | - مسجد |
| - Retail | - محلات تجارية |
| - Nursery | - حضنة |



- Private Balconies / Terraces as per unit plan
- Kitchen cabinets and countertops
- Fully tiled bathrooms, en-suites and guest toilets wherever applicable
- Double glazed windows
- Shower in each bathroom
- Central air conditioning
- Vanity units & Mirrors
- Laundry & Maid Room in some townhouses
- Some bedrooms with private bathroom
- Some townhouses with internal elevator (optional)
- Private Parking

- شرفات / تراسات حسب مخطط الوحدة
- خزائن مطبخ وكونترتوب
- حمامات مكسوة بالكامل وأجنحة وحمامات للضيوف حيثما كان ذلك متاحا
- نوافذ زجاجية مزدوجة
- دش وحوض استحمام في كل حمام
- تكييف هواء مركزي
- وحدات تخزين و مرايا
- غرفة غسيل و خادمة في بعض الوحدات
- حمام خاص في بعض الغرف
- بعض وحدات التاون هاوس مزودة بمصعد خاص (اختياري)
- موقف خاص للسيارات

مميزات الوحدة UNIT FEATURES



PROJECT DETAILS

Type: Residential Townhouses and Villas

Plot Area: 148,638.02 sq.m

Total Units: 838 Units

تفاصيل المشروع

النوع: فلل و وحدات تاون هاوس سكنية

مساحة الأرض: 148,638.02 متر مربع

عدد الوحدات: 838 وحدة

مزيج الوحدات

UNIT MIX

يحتوي المشروع على أنواع متعددة من الوحدات

Contains different types

- 392 تاون هاوس ثلاث غرف (أرضي + 2)
Three Bedroom Townhouses (G+2)
- 30 فيلا فخمة ثلاث غرف - وسط & كورنر
Three Bedroom Luxury Villas - Middle & Corner
- 334 تاون هاوس أربع غرف
Four Bedroom Townhouses
- 46 فيلا فخمة أربع غرف - وسط & كورنر
Four Bedroom Luxury Villas - Middle & Corner
- 2 فيلا مستقلة فخمة أربع غرف
Four Bedroom Standalone Luxury Villas
- 34 فيلا فخمة خمس غرف - كورنر
Five Bedroom Luxury Villas - Corner

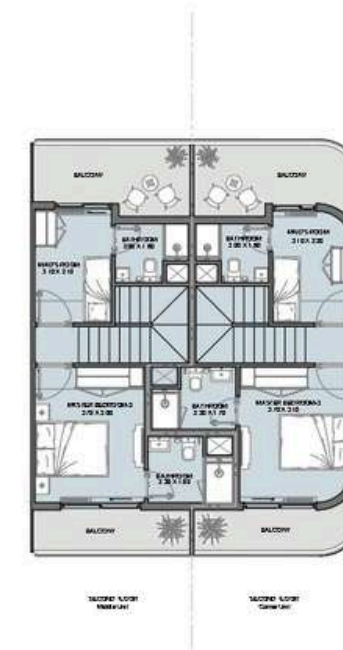
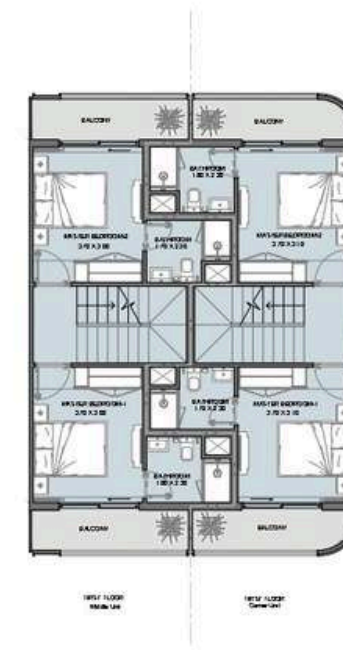
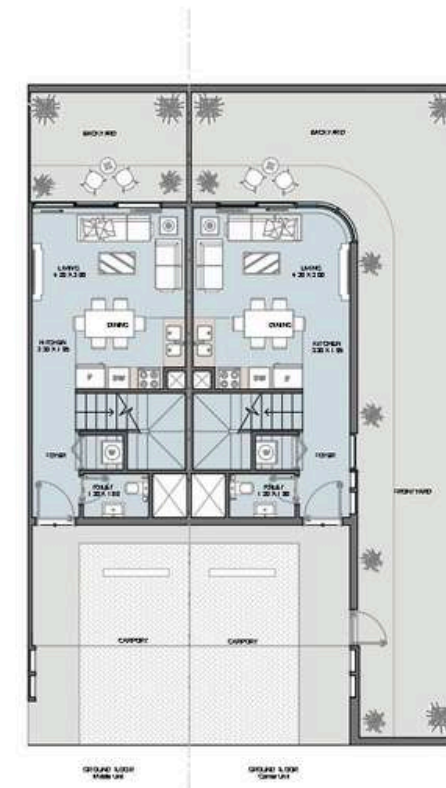
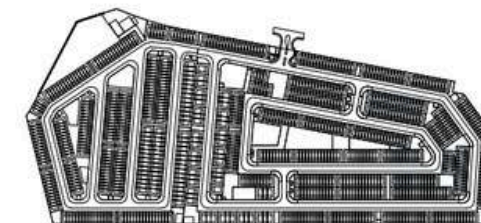
TOTAL UNITS 838

إجمالي عدد الوحدات: 838



UNIT TYPES

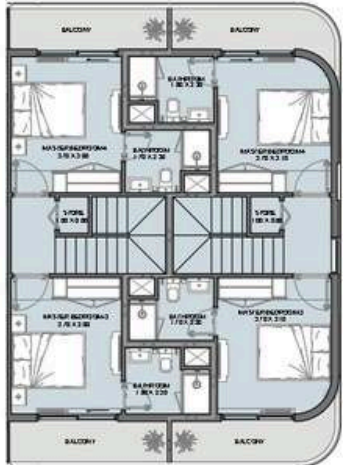
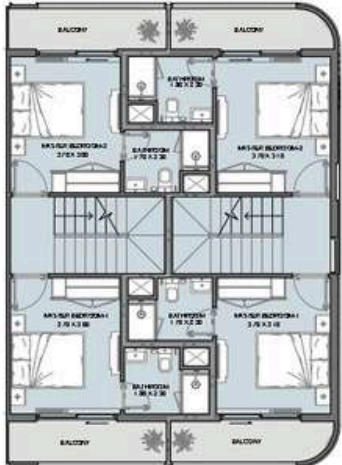
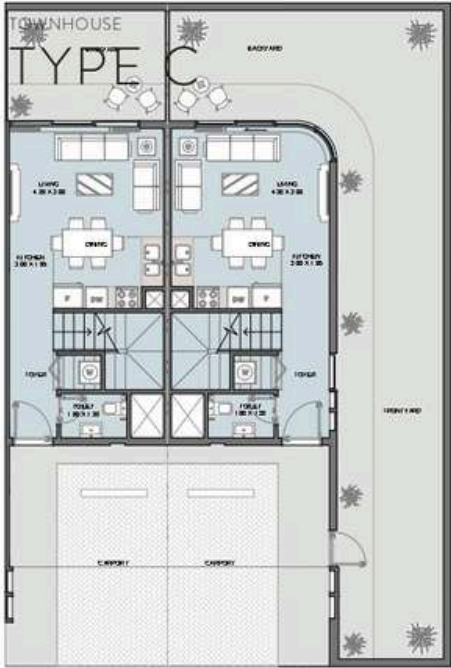
All drawings and dimensions are approximate. Drawings are not to scale and are subject to change without notice. The developer reserves the right to make revisions. The units are measured at typical floors in the building and columns may vary in size depending on the floor level. The furnishing and accessories shown are for representation only. The availability, length and width of the balcony varies depending on which floor and which orientation the unit is located within the building. There will be slight differences in the internal areas between the same unit types depending on the shaft sizes that go through the units.



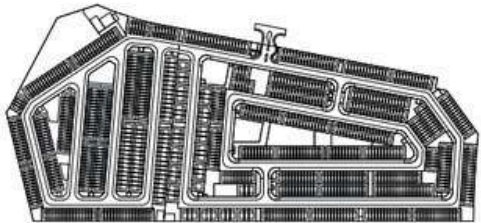
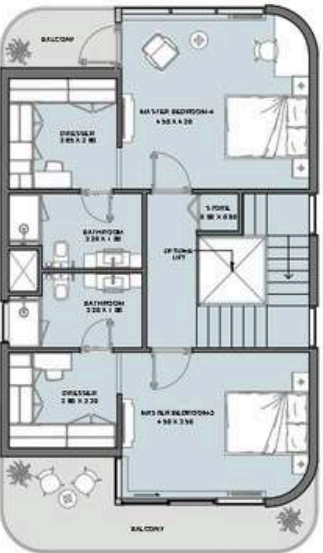
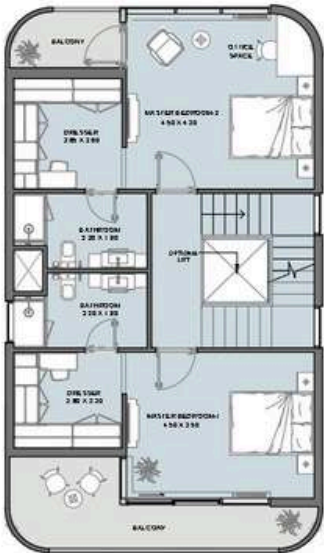
3B TOWNHOUSE TYPE A

Middle Unit		Corner Unit	
Mid-Internal Area	1216.75 sq.ft	Corner-Internal Area	1254.86 sq.ft
Mid-Outdoor Area	720.10 sq.ft	Corner-Outdoor Area	1362.71 sq.ft
Mid-Total Area	1936.85 sq.ft	Corner-Total Area	2617.57 sq.ft

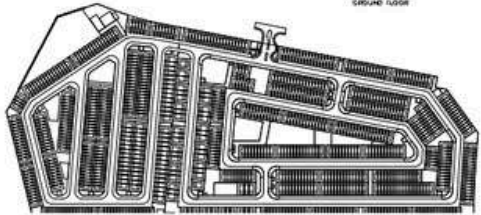
4B



4B LUXURY STANDALONE
TYPE B



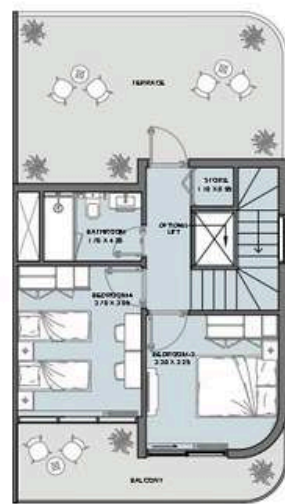
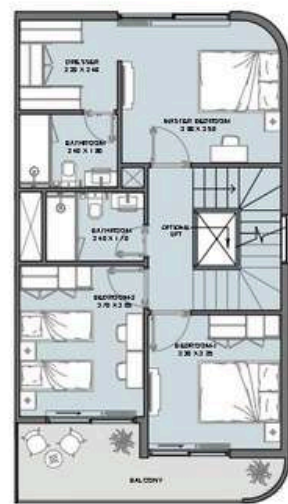
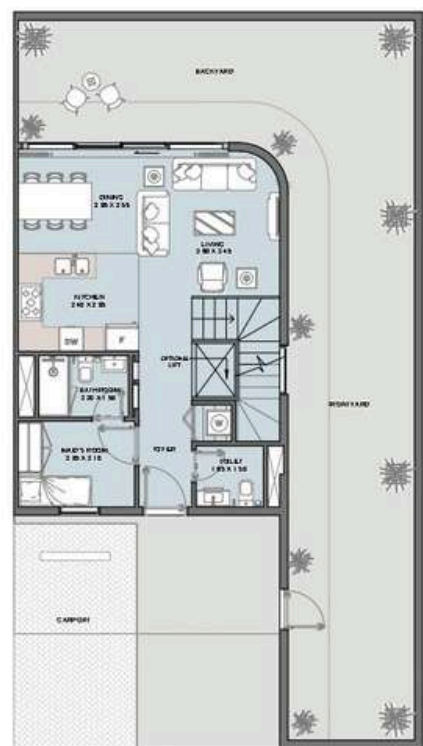
Middle Unit		Corner Unit	
Mid-Internal Area	1303 sq.ft	Corner-Internal Area	1344 sq.ft
Mid-Outdoor Area	689 sq.ft	Corner-Outdoor Area	1330 sq.ft
Mid-Total Area	1992 sq.ft	Corner-Total Area	2674 sq.ft



Internal Area	2734 sq.ft
Outdoor Area	2082 sq.ft
Total Area	4817 sq.ft

5B

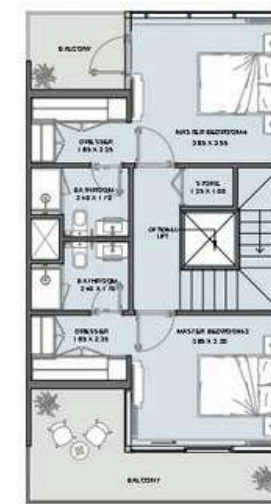
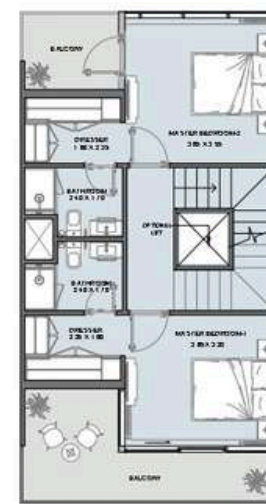
LUXURY CORNER-VILLA
TYPE A



Corner-Internal Area	1798.9 sq.ft
Corner-Outdoor Area	1815.55 sq.ft
Corner-Total Area	3614.52 sq.ft

4B

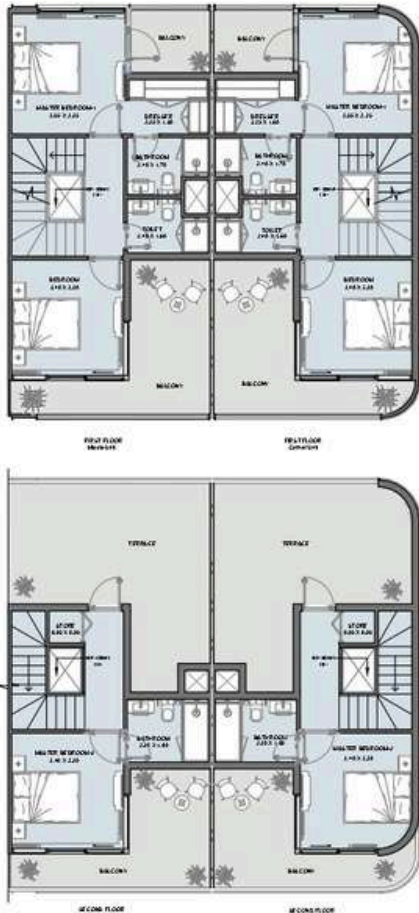
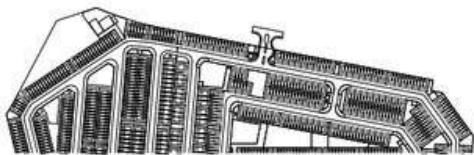
LUXURY MID-VILLA
TYPE A



Mid-Internal Area	1826.96 sq.ft
Mid-Outdoor Area	985.54 sq.ft
Mid-Total Area	2812.50 sq.ft

3B

LUXURY VILLA
TYPE B

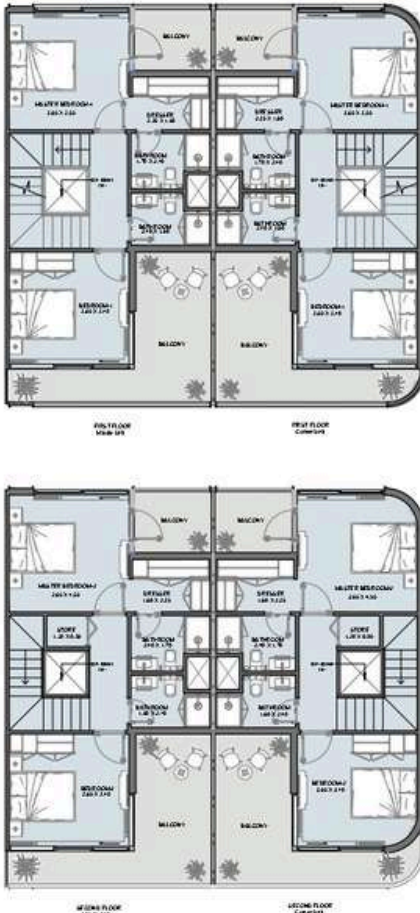
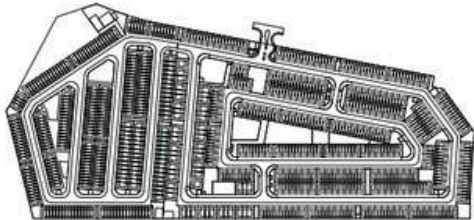
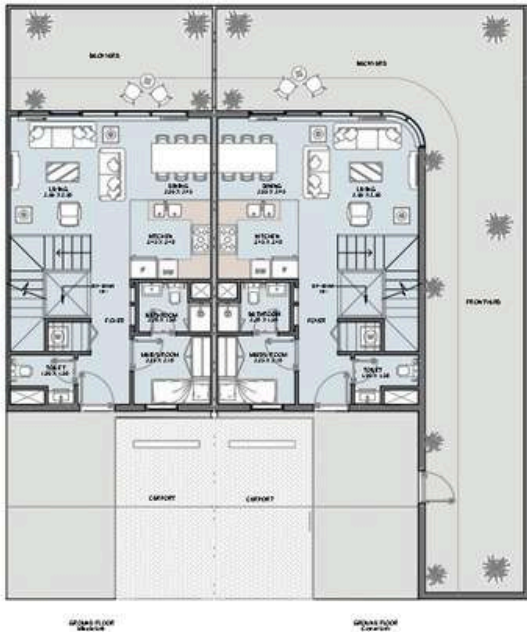


Middle Unit

Corner Unit

4B

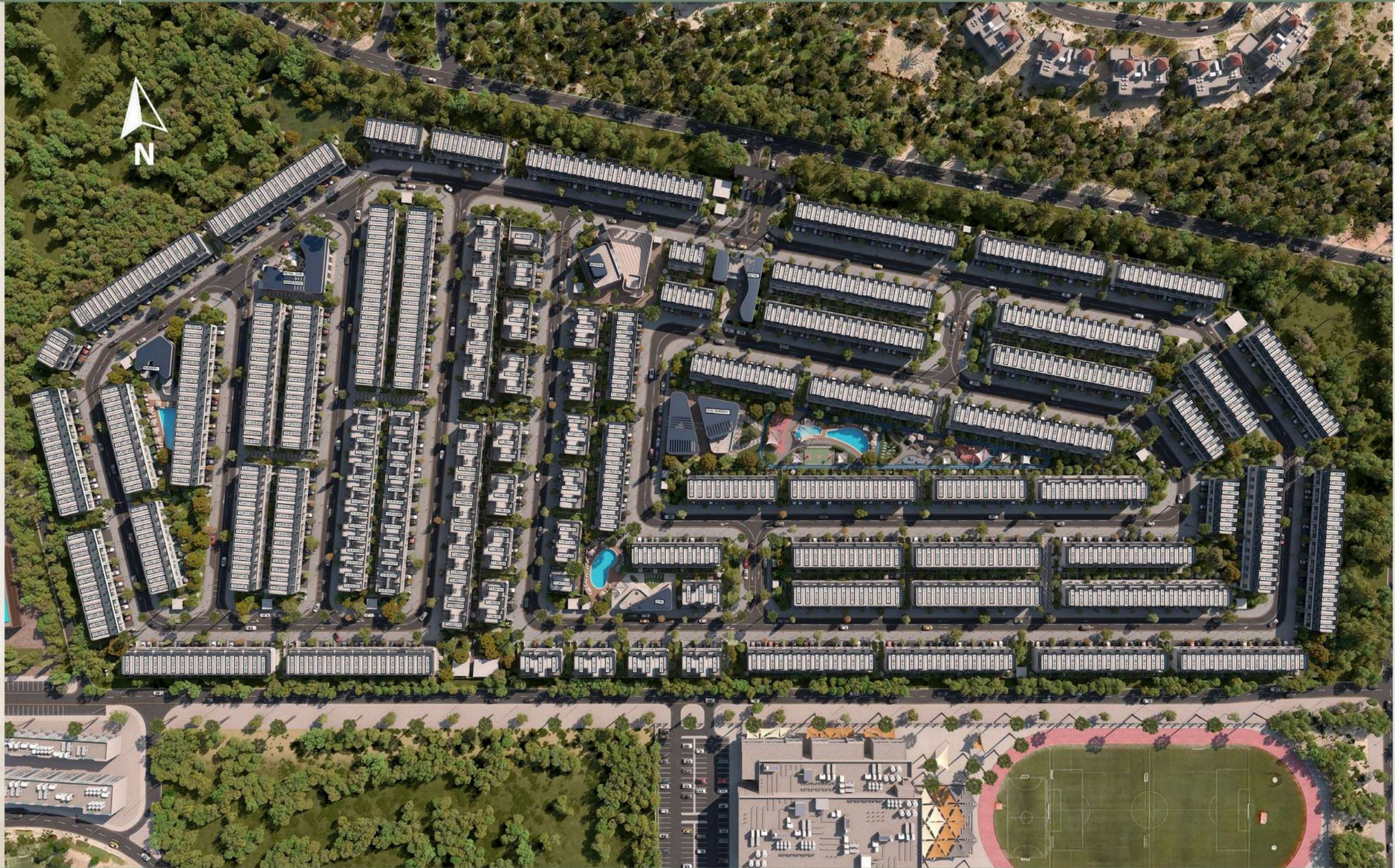
LUXURY VILLA
TYPE D



Middle Unit		Corner Unit	
Mid-Internal Area	1748.81 sq.ft	Comer-Internal Area	1760.87 sq.ft
Mid-Outdoor Area	1072.95 sq.ft	Comer-Outdoor Area	1715.66 sq.ft
Mid-Total Area	2821.76 sq.ft	Comer-Total Area	3476.52 sq.ft



MASTERPLAN



Taormina
Village



Where Prestige Meets Property



At Majara Luxury Real Estate L.L.C., we redefine the art of luxury living. Based in the heart of the UAE, we specialize in curating exceptional real estate experiences tailored to the needs of discerning investors, end-users, and global clientele.



With a refined portfolio of premium properties across all seven Emirates, our expertise lies in both off-plan and ready-to-move assets, offering opportunities that blend architectural excellence with investment potential.



We are more than just property consultants & we are partners in your journey to finding the perfect home, investment, or lifestyle. Driven by integrity, market insight, and personalized service, Majara stands as a trusted name in an ever-evolving market.

Contact Us :

Phone: +971564452803

Email: info@majararealestate.com

<https://majararealestate.com/>