


MAJARA LUXURY REAL ESTATE LLC

Head Office Level 36-01, Po Box :124382 , Trade Center 1, Sheikh Zayed Road , Burj Al Salam Tower Dubai UAE

Majara Presents Riverton House — Redefining Contemporary Elegance in Dubai

Welcome to a Life Beautifully Balanced





A residence shaped by contrast and calm, Riverton House is a place where life settles into balance. Directly connected to a crystal-clear community lagoon and wrapped in layers of curated greenery, it offers a rare dialogue between stillness and city. The expansive community park and nearby Ras Al Khor Wildlife Sanctuary frame the landscape with a natural softness, while views of the Downtown Dubai skyline serve as a distant reminder of the world outside. From sensorial wellness spaces to moments designed for reflection and reset, every amenity is intentionally placed to create a sanctuary for modern living — one where nature, architecture, and everyday ritual move in quiet rhythm.

A Sanctuary in the City's Silhouette



Riverton House evokes a lifestyle of quiet elegance, where flow, community, and nature coexist in perfect rhythm. Set within the vibrant heart of Mohammed Bin Rashid City, this boutique residence is a sanctuary of mindful design where architecture doesn't just impress, it integrates.

Here, every line, texture, and finish is curated with intention. With panoramic views of the community lagoon and a seamless connection to its natural surroundings, Riverton House is an invitation to dwell in balance, a home where modernity meets stillness, and everyday living is elevated by design.

Driving Distances

01
mins

Proposed Metro
Line

08
mins

Wild Life
Sanctuary

12
mins

Meydan Race
Course

14
mins

Dubai International
Airport

16
mins

Museum of the
Future

17
mins

Burj Khalifa

17
mins

Jumeirah Beach

19
mins

Dubai International
Financial Centre

24
mins

Dubai Creek Golf &
Yacht Club

25
mins

Burj Al Arab

31
mins

Palm Jumeirah

Building Configuration

Rooftop

19th Residential
Floors

4 Podiums

Ground Floor

Anticipated Service Charge
AED 16 per sq.ft.

Ownership
Freehold

Anticipated Completion Date
Q2 2028

Parking

1, 2 and 2 bedrooms + study : 1 parking space
3 bedrooms: 2 parking spaces

Elevators

3 passenger elevators
1 service elevator



Size Range & Unit Type

| | | |
|-------------------------|------------------|-----------------------------------|
| 1 Bedroom Apartment | 87 units | From 767 sq.ft. to 900 sq.ft. |
| 2 Bedroom Apartment | 28 units | From 1,109 sq.ft. to 1,236 sq.ft. |
| 2 Bedroom Apartment + S | 28 units | From 1,329 sq.ft. to 1,403 sq.ft. |
| 3 Bedroom Apartment | 6 units | From 1,528 sq.ft. to 1,595 sq.ft. |
| Retail | 2 units | From 750 sq.ft. to 2,616 sq.ft. |
| Total Units | 151 units | |



GROUND FLOOR AMENITIES PLAN

- 01 VEHICLE ENTRANCE/EXIT
- 02 ARCADE ENTRANCE
- 03 AIR-CONDITIONED ARCADE
- 04 LOBBY ENTRANCE
- 05 LOBBY RECEPTION
- 06 LOBBY LOUNGE
- 07 COMMUNAL TABLE
- 08 OPERABLE GLASS WALL
- 09 CLUB LOUNGE
- 10 GAMES STATION AREA
- 11 SUPPER CLUB
- 12 KITCHENETTE
- 13 LIFT LOBBY
- 14 ACCESS TO COMMUNITY LAGOON
- 15 SUN LOUNGERS & CABANAS
- 16 ACCESS TO UPPER LEVEL PARKING





Welcome to a Life Beautifully Balanced

At Riverton House, nature flows through every space, creating a quiet dialogue between architecture and environment. Calming neutral tones, natural textures, and considered design details shape a serene atmosphere, a peaceful retreat nestled within the city. This is not simply a residence; it's a place of belonging. Exclusive, intimate, and attuned to the rhythm of mindful living.



Lobby



Clubhouse



Supper Club



Community Lagoon



Infinity Pool



FITNESS STUDIO



YOGA STUDIO



TREATMENT ROOM



WELLNESS ROOM



KID'S PLAY AREA



OUTDOOR SPACES



Outdoor BBQ & Dining



POOL

Residential Apartments





LIVING AREA



KITCHEN



BEDROOM



BATHROOM

1 - BEDROOM TYPE A



Internal Living Area : 702.45 sq. ft.

Outdoor Living Area : 81.91 sq. ft.

Total Living Area : 784.37 sq. ft.



5th Floor



6th - 13th Floor



14th - 17th Floor



18th - 23rd Floor



1 - BEDROOM
TYPE B



Internal Living Area : 724.09 sq. ft. Outdoor Living Area : 73.95 sq. ft. Total Living Area : 798.04 sq. ft.



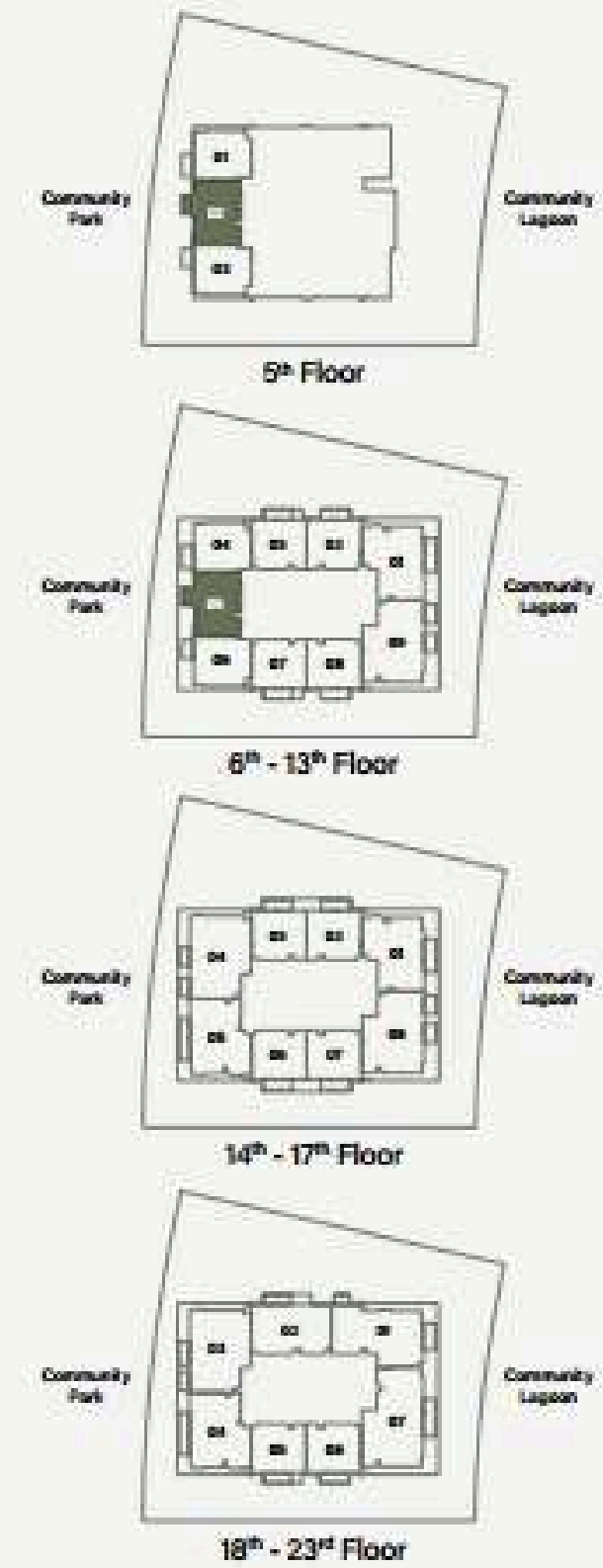
1 - BEDROOM TYPE C



Internal Living Area : 765.74 sq. ft.

Outdoor Living Area : 74.49 sq. ft.

Total Living Area : 840.23 sq. ft.



2 - BEDROOM
TYPE A



Internal Living Area : 1063.80 sq. ft.

Outdoor Living Area : 107.96 sq. ft.

Total Living Area : 1171.76 sq. ft.



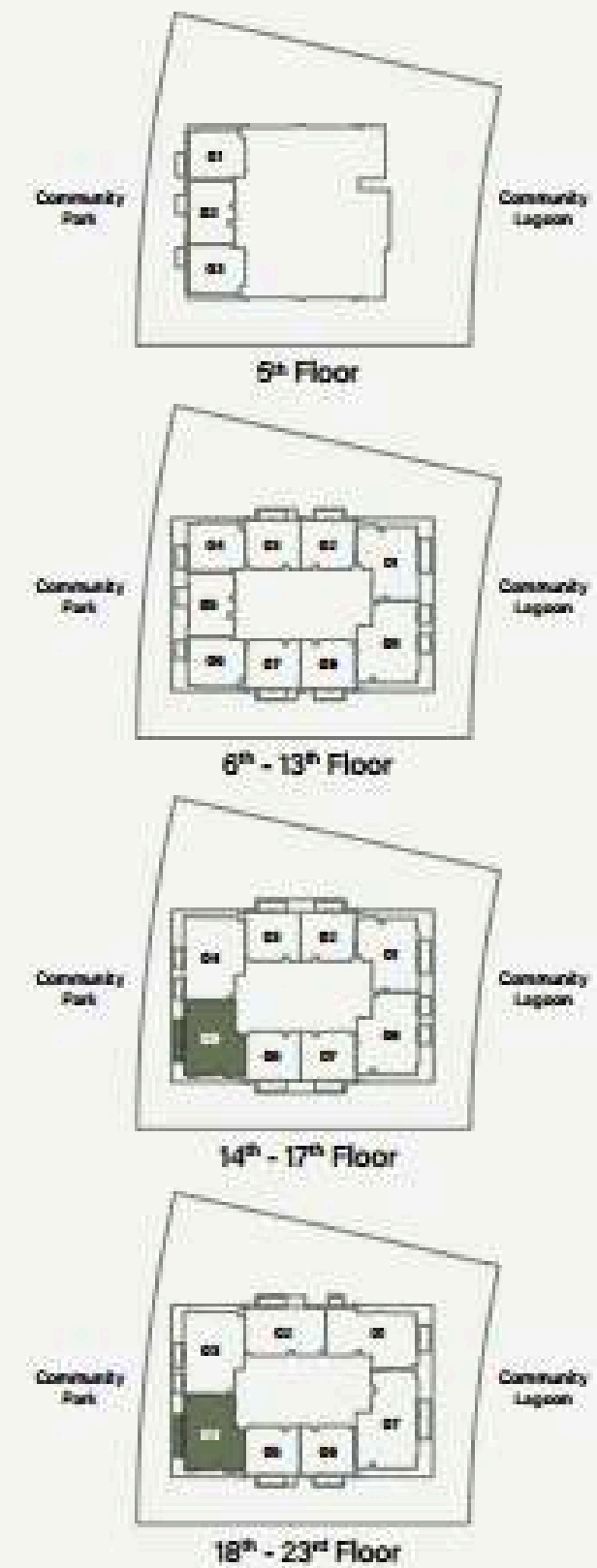
2 - BEDROOM TYPE B



Internal Living Area : 1114.06 sq. ft.

Outdoor Living Area : 119.48 sq. ft.

Total Living Area : 1233.54 sq. ft.



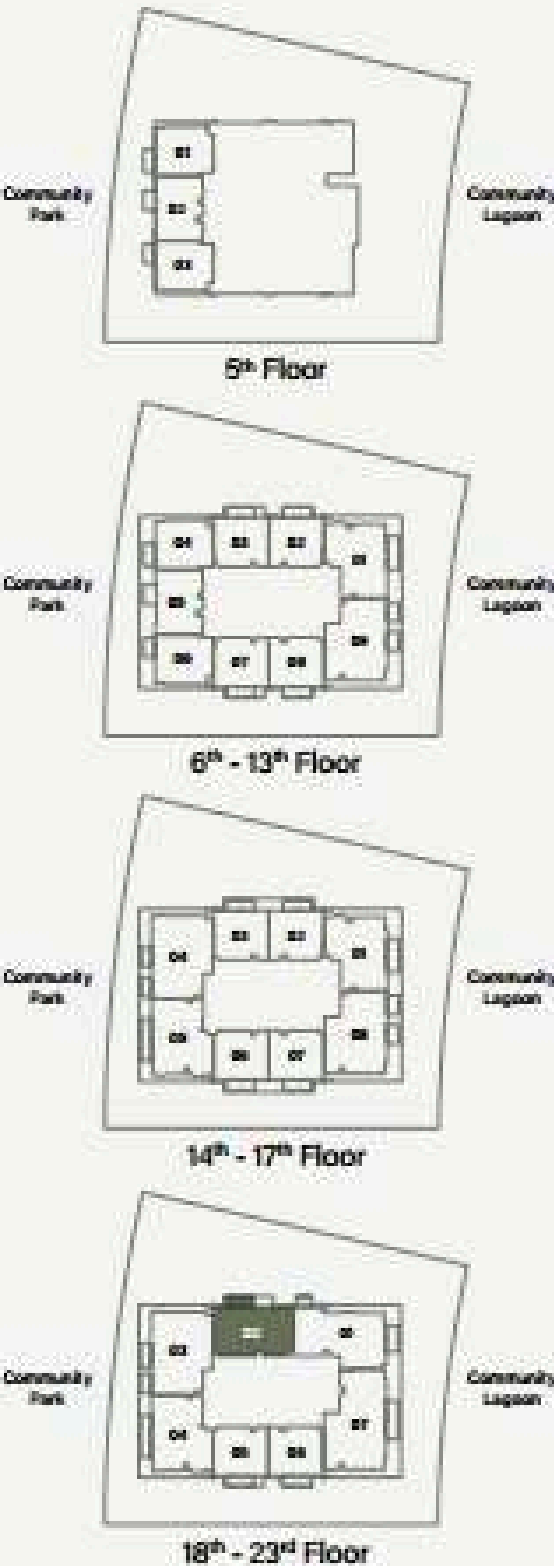
2 - BEDROOM
TYPE C



Internal Living Area : 1026.98 sq. ft.

Outdoor Living Area : 81.91 sq. ft.

Total Living Area : 1108.90 sq. ft.



2 - BEDROOM + S TYPE A



Internal Living Area : 1217.83 sq. ft.

Outdoor Living Area : 119.16 sq. ft.

Total Living Area : 1336.99 sq. ft.



5th Floor



6th - 13th Floor



14th - 17th Floor



18th - 23rd Floor



2 - BEDROOM + S TYPE B



Internal Living Area : 1254.00 sq. ft.

Outdoor Living Area : 108.18 sq. ft.

Total Living Area : 1362.17 sq. ft.



5th Floor



6th - 13th Floor



14th - 17th Floor



18th - 23rd Floor



2 - BEDROOM + S TYPE C



Internal Living Area : 1230.75 sq. ft.

Outdoor Living Area : 135.84 sq. ft.

Total Living Area : 1366.59 sq. ft.



5th Floor



6th - 13th Floor



14th - 17th Floor



18th - 23rd Floor



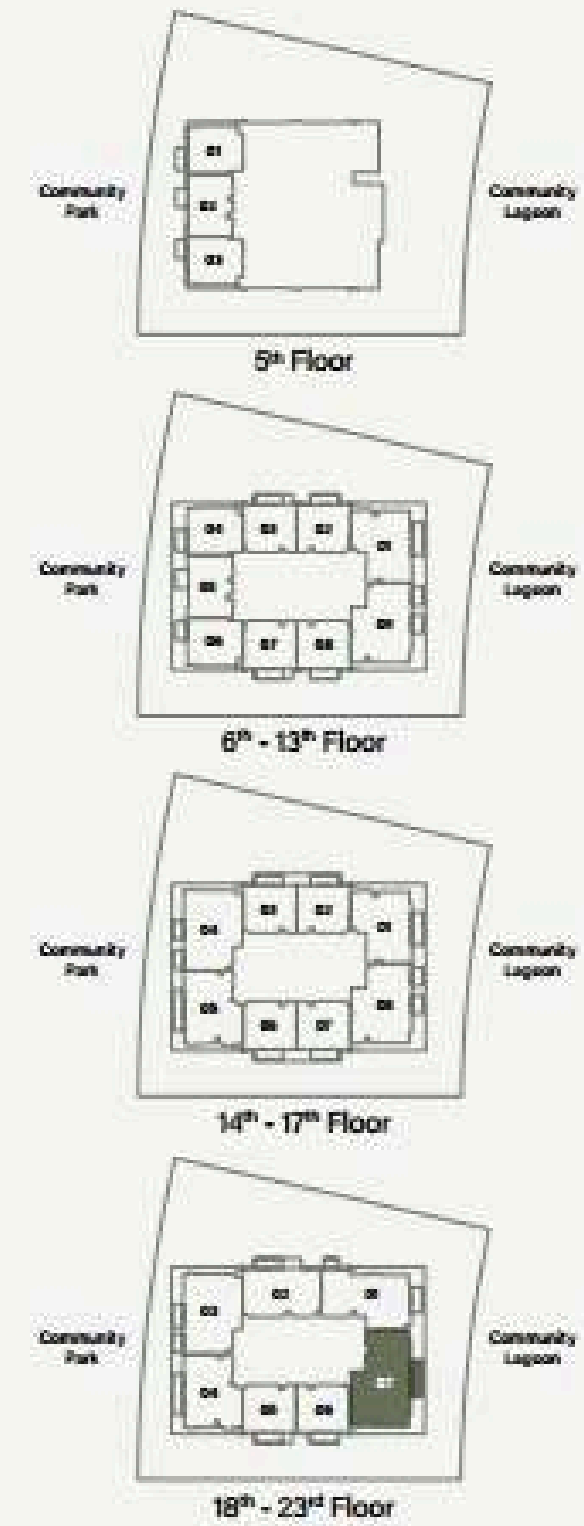
3 - BEDROOM TYPE A



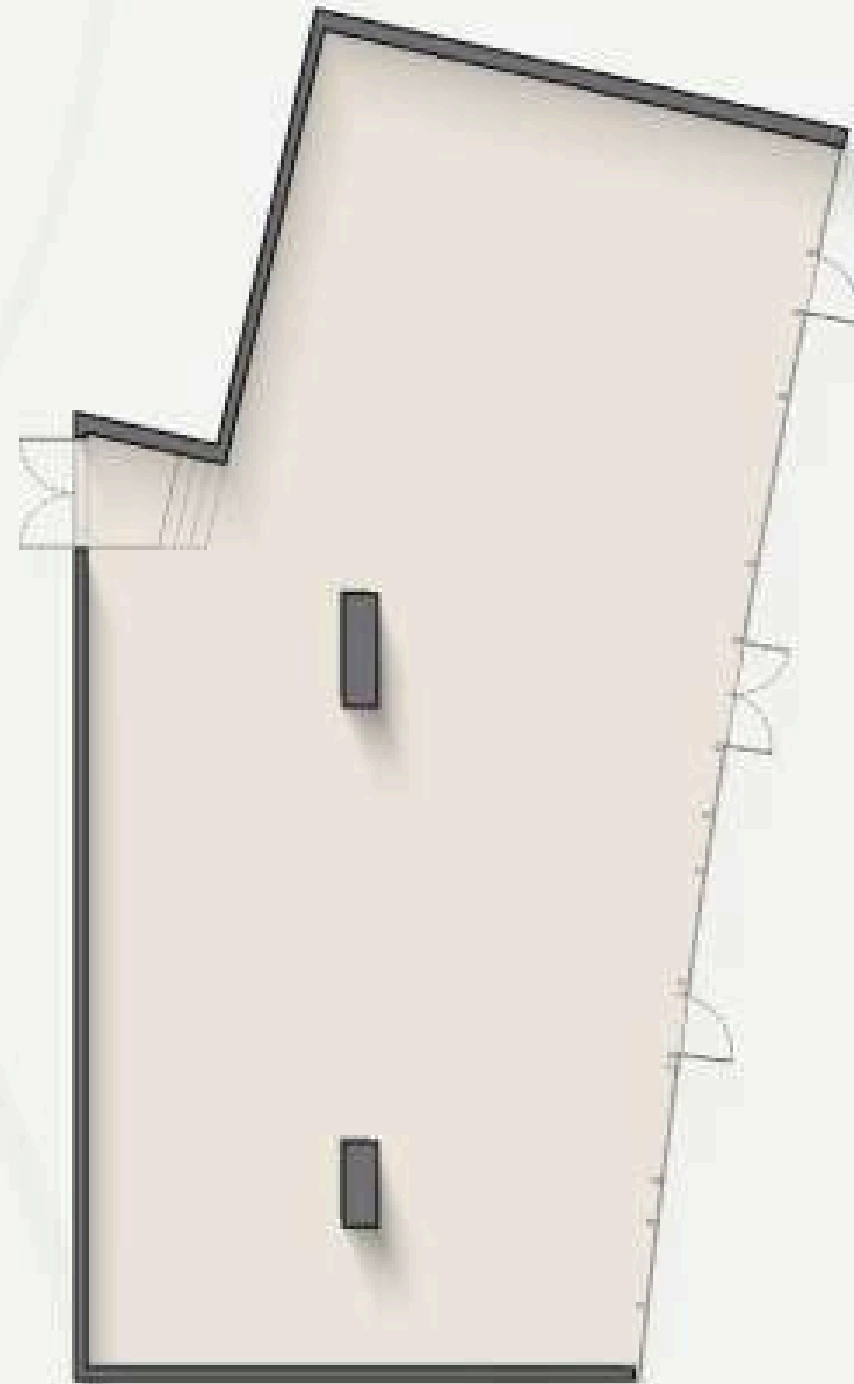
Internal Living Area : 1436.87 sq. ft.

Outdoor Living Area : 93.97 sq. ft.

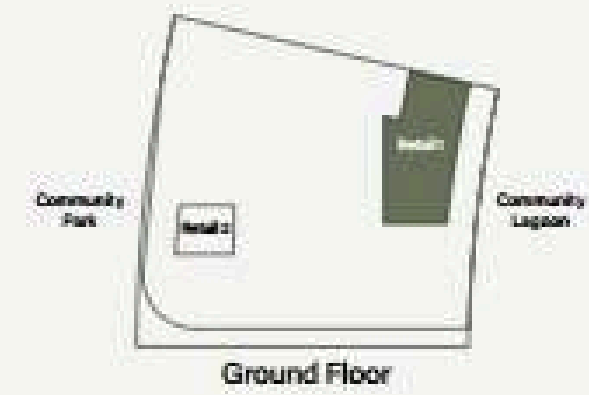
Total Living Area : 1530.84 sq. ft.



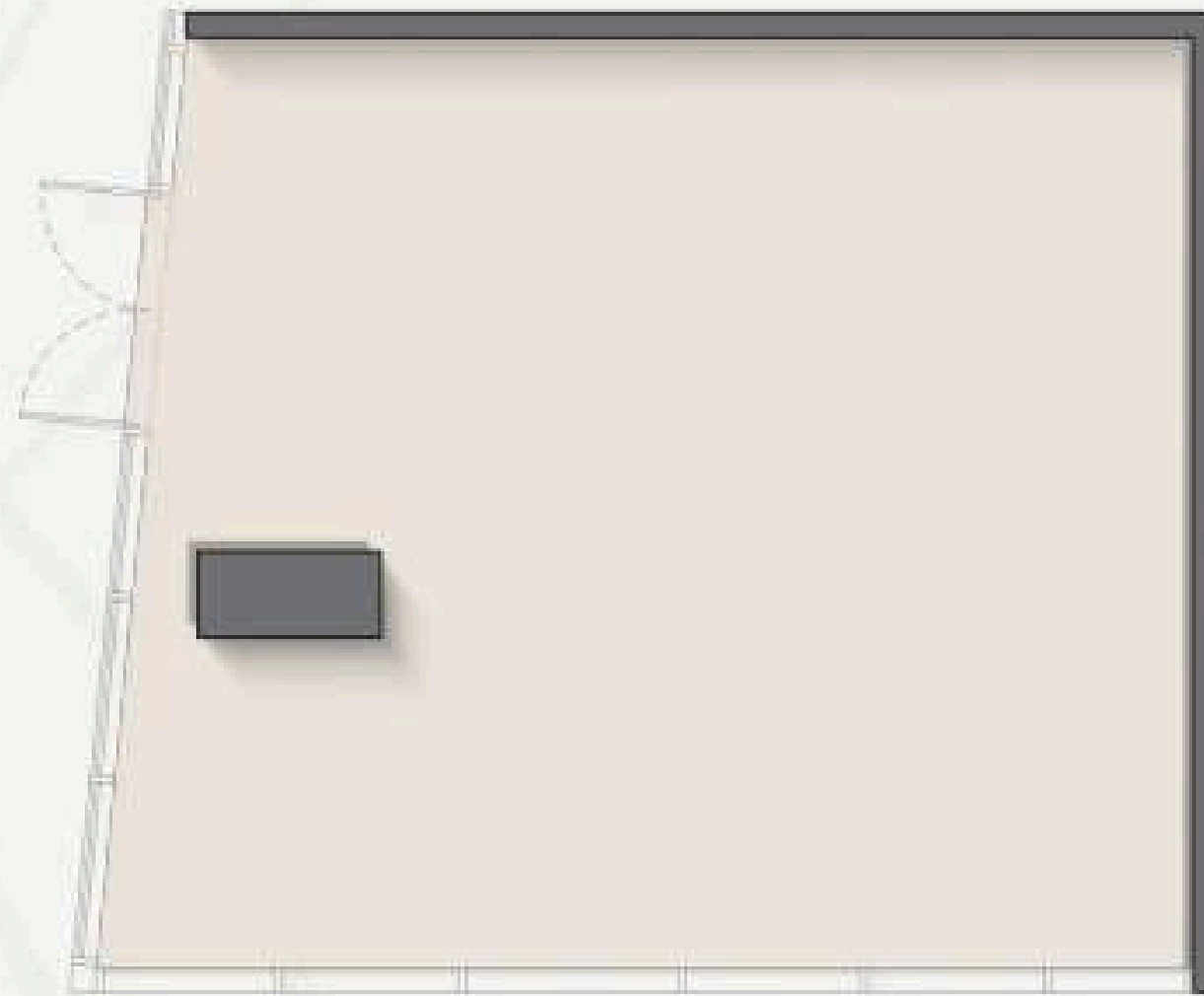
RETAIL 1



Internal Retail Area : 2615.95 sq. ft.



RETAIL 2



Internal Living Area : 750.03 sq. ft.



Payment Plan

20%

At the time
of booking

10%

60 days after the
reservation date

5%

120 days after the
reservation date

5%

180 days after the
reservation date

5%

240 days after the
reservation date

5%

360 days after the
reservation date

5%

On completion of 20%
construction of the project

5%

On completion of 30%
construction of the project

5%

On completion of 40%
construction of the project

5%

On completion of 50%
construction of the project

30%

On Completion



Where Prestige Meets Property



At Majara Luxury Real Estate L.L.C., we redefine the art of luxury living. Based in the heart of the UAE, we specialize in curating exceptional real estate experiences tailored to the needs of discerning investors, end-users, and global clientele.



With a refined portfolio of premium properties across all seven Emirates, our expertise lies in both off-plan and ready-to-move assets, offering opportunities that blend architectural excellence with investment potential.



We are more than just property consultants & we are partners in your journey to finding the perfect home, investment, or lifestyle. Driven by integrity, market insight, and personalized service, Majara stands as a trusted name in an ever-evolving market.

Contact Us :

Phone: +971564452803

Email: info@majararealestate.com

<https://majararealestate.com/>