



# ONE RIVER POINT



# MAJARA LUXURY REAL ESTATE LLC

Head Office Level 36-01, Po Box :124382 , Trade Center 1, Sheikh Zayed Road , Burj Al Salam Tower Dubai UAE

Introducing One River Point: The Future of Urban Elegance  
At Business Bay Dubai







One River Point





## DRIVING DISTANCES

Dubai Water Canal Boardwalk	1 minute
Dubai Waterfall	2 minutes
Business Bay Metro Station Business Bay Marina Al Quoz Pond Park	5 minutes
Burj Khalifa Dubai Mall	7 minutes
Museum of The Future	8 minutes
Dubai International Financial Centre City Walk Meydan Racecourse	10 minutes
Mall of the Emirates	13 minutes
Dubai Design District Dubai Festival City Kite Beach	15 minutes
Burj Al Arab	17 minutes
Palm Jumeirah	19 minutes
Emirates Golf Club Dubai International Airport	20 minutes
Al Maktoum International Airport	39 minutes





## DROP-OFF AREA

The hotel-style drop-off area with concierge service, the entrance lobby at One River Point is always a warm welcome. A bright and active space, the lobby is centered on beautiful marble flooring.





## THE RIVER CLUB

Balanced on the outermost point of The Podium, the pool deck at One River Point provides a shaded terrace, family and adult infinity pools, BBQ areas and sun-loungers. It is the ideal place for watching the sun go down over the canal, elevated, sophisticated and relaxing, The River Club is already set to be a favorite of One River Point residents.





## THE CLUBHOUSE

A refined interiors palette invites you to a sophisticated shared space. Formal yet dynamic, the Clubhouse sits on the upper floor of The Podium, overlooking the swimming pool through large glass doors. Opening into an elegant lounge space, with sumptuous furnishings, co-working spaces, a coffee station and pantry, it is an ideal meeting spot to inspire your next idea.





KID'S PLAY AREA





FITNESS STUDIO





YOGA STUDIO





IMMERSIVE ROOM





# • THE RESIDENCES

One River Point is tailored to a range of lifestyles, offering a beautifully designed collection of studios, apartments, four-bedroom duplexes, and decadent penthouses with private swimming pools. While different in their character, every home at One River Point encapsulates style and quality, down to the last detail.





LIVING SPACES





THE KITCHEN





BATHROOM & POWDER ROOMS





# FLOOR PLANS

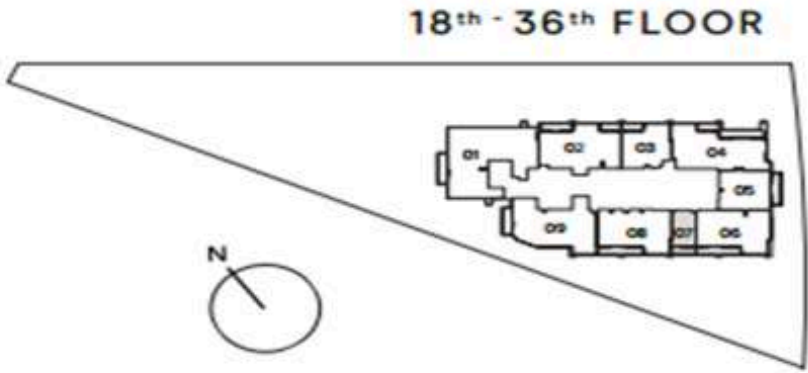


**STUDIO**  
TYPE A



Internal Living Area	:	<b>401.06 Sq. Ft</b>
Outdoor Living Area	:	<b>86.43 Sq. Ft</b>
Total Living Area	:	<b>487.50 Sq. Ft</b>

---





# 1 BEDROOM

TYPE A



Internal Living Area : 886.41 Sq. Ft  
Outdoor Living Area : 71.69 Sq. Ft  
Total Living Area : 958.10 Sq. Ft

3<sup>rd</sup> FLOOR  
301

4<sup>th</sup> FLOOR  
401

5<sup>th</sup> FLOOR  
501

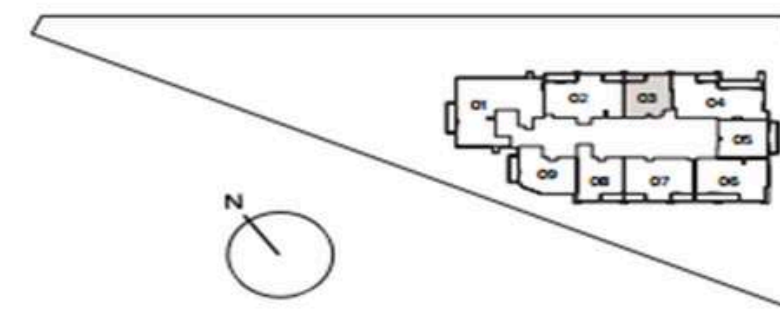
6<sup>th</sup> FLOOR  
601

7<sup>th</sup> FLOOR  
701

8<sup>th</sup> - 16<sup>th</sup> FLOOR  
803

18<sup>th</sup> - 36<sup>th</sup> FLOOR  
1803

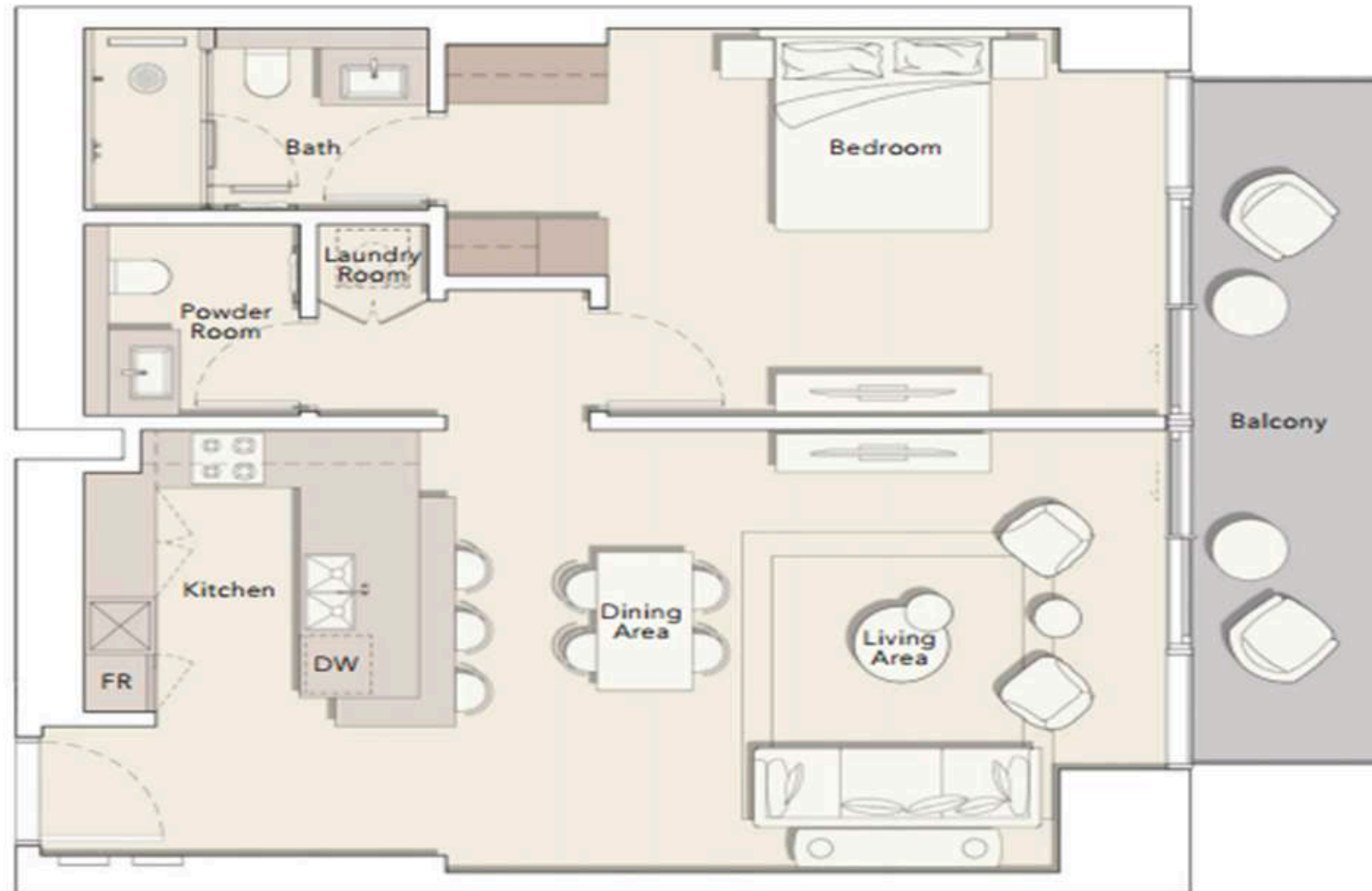
8<sup>th</sup> - 16<sup>th</sup> FLOOR





# 1 BEDROOM

TYPE B



Internal Living Area : 930.43 Sq. Ft  
 Outdoor Living Area : 129.81 Sq. Ft  
 Total Living Area : 1060.25 Sq. Ft

**3<sup>rd</sup> FLOOR**  
 303

**4<sup>th</sup> FLOOR**  
 403

**5<sup>th</sup> FLOOR**  
 503

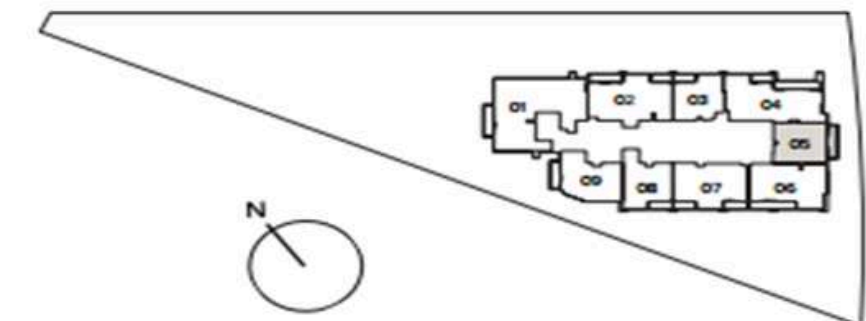
**6<sup>th</sup> FLOOR**  
 603

**7<sup>th</sup> FLOOR**  
 703

**8<sup>th</sup> - 16<sup>th</sup> FLOOR**  
 805

**18<sup>th</sup> - 36<sup>th</sup> FLOOR**  
 1805

**8<sup>th</sup> - 16<sup>th</sup> FLOOR**





# 1 BEDROOM

TYPE C



Internal Living Area : 1090.49 Sq. Ft  
Outdoor Living Area : 107.10 Sq. Ft  
Total Living Area : 1197.59 Sq. Ft

3<sup>rd</sup> FLOOR  
307

4<sup>th</sup> FLOOR  
407

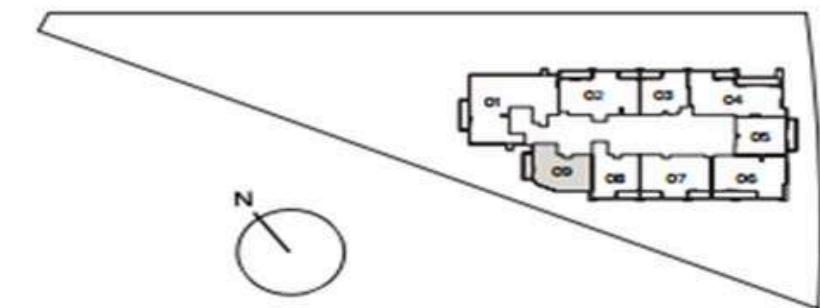
5<sup>th</sup> FLOOR  
507

6<sup>th</sup> FLOOR  
607

7<sup>th</sup> FLOOR  
707

8<sup>th</sup> - 16<sup>th</sup> FLOOR  
809

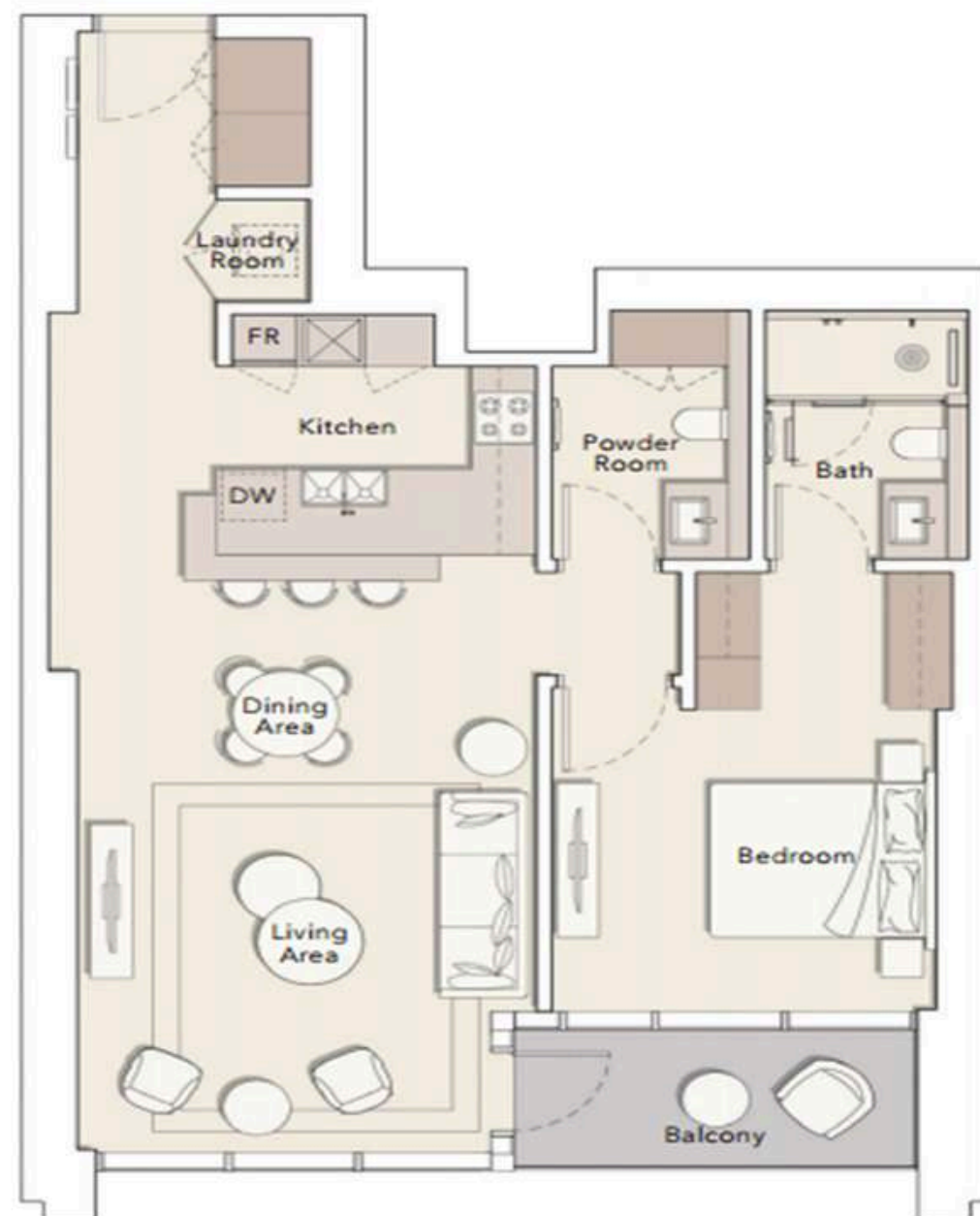
8<sup>th</sup> - 16<sup>th</sup> FLOOR





# 1 BEDROOM

TYPE D



Internal Living Area : 991.03 Sq. Ft  
Outdoor Living Area : 77.82 Sq. Ft  
Total Living Area : 1068.86 Sq. Ft

3<sup>rd</sup> FLOOR  
306

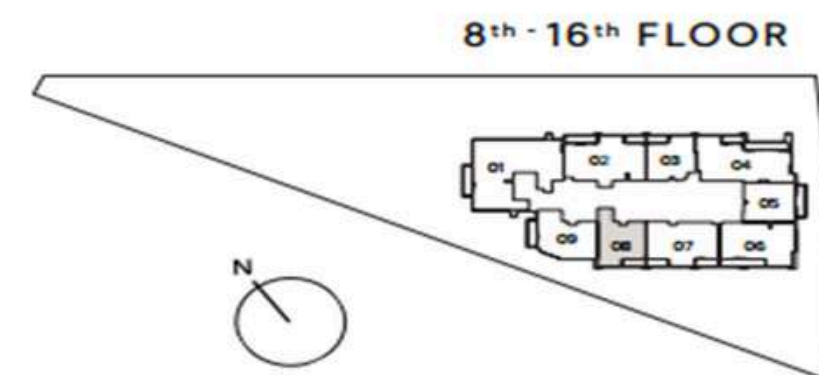
4<sup>th</sup> FLOOR  
406

5<sup>th</sup> FLOOR  
506

6<sup>th</sup> FLOOR  
606

7<sup>th</sup> FLOOR  
706

8<sup>th</sup> - 16<sup>th</sup> FLOOR  
808

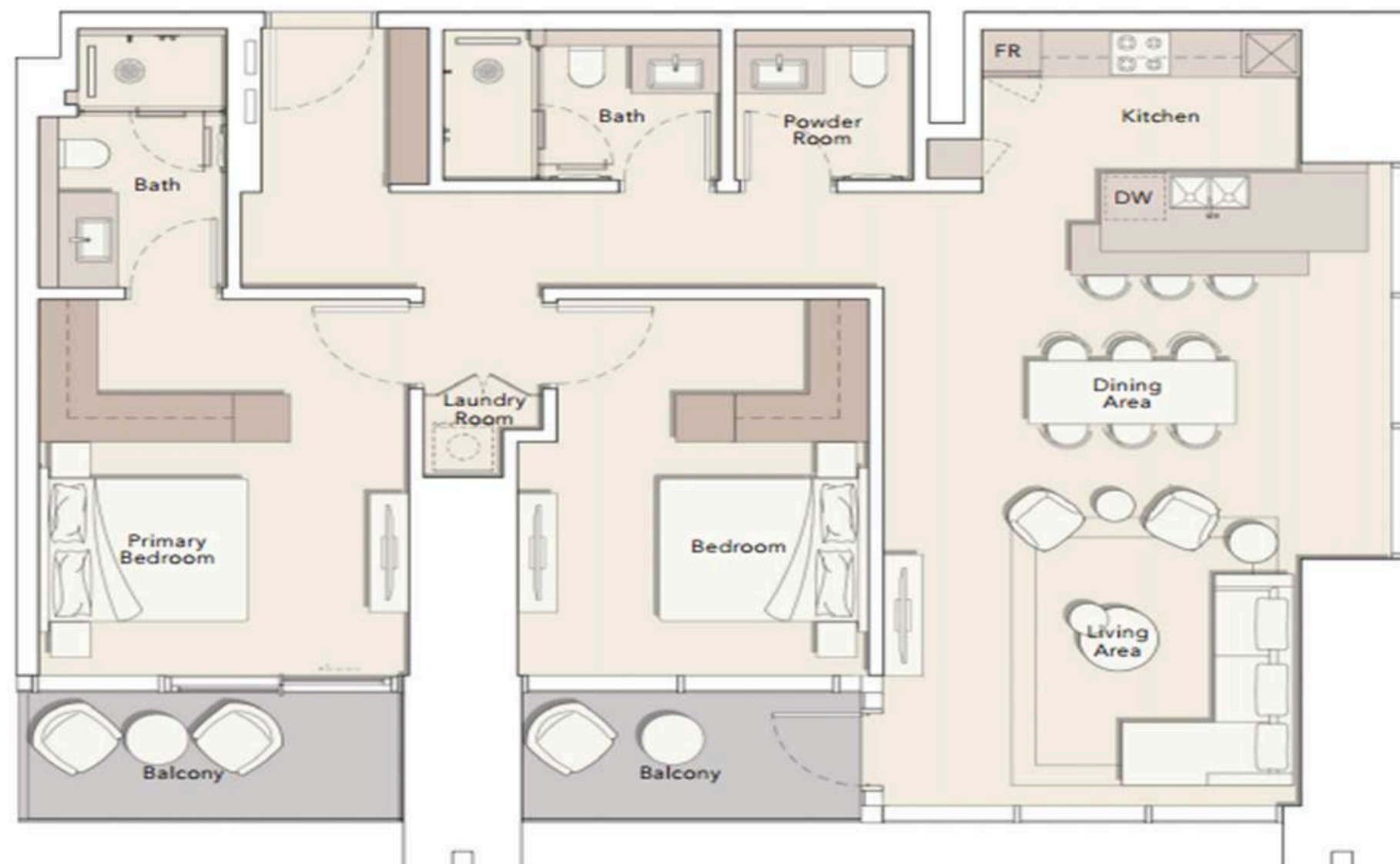




## 2 BEDROOM

TYPE A

Internal Living Area : 1337.31 Sq. Ft  
Outdoor Living Area : 152.63 Sq. Ft  
Total Living Area : 1489.94 Sq. Ft



3<sup>rd</sup> FLOOR  
304

4<sup>th</sup> FLOOR  
404

5<sup>th</sup> FLOOR  
504

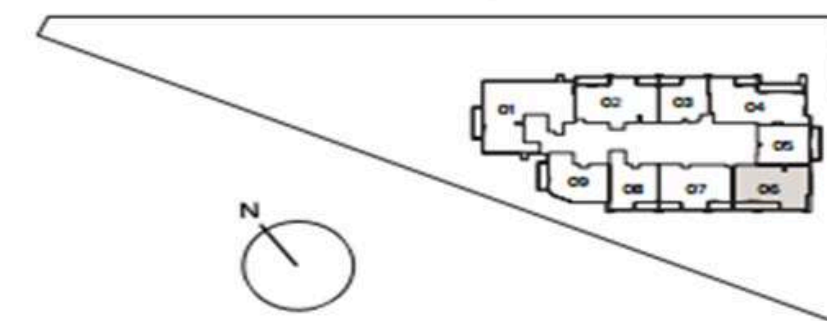
6<sup>th</sup> FLOOR  
604

7<sup>th</sup> FLOOR  
704

8<sup>th</sup> - 16<sup>th</sup> FLOOR  
806

18<sup>th</sup> - 36<sup>th</sup> FLOOR  
1806

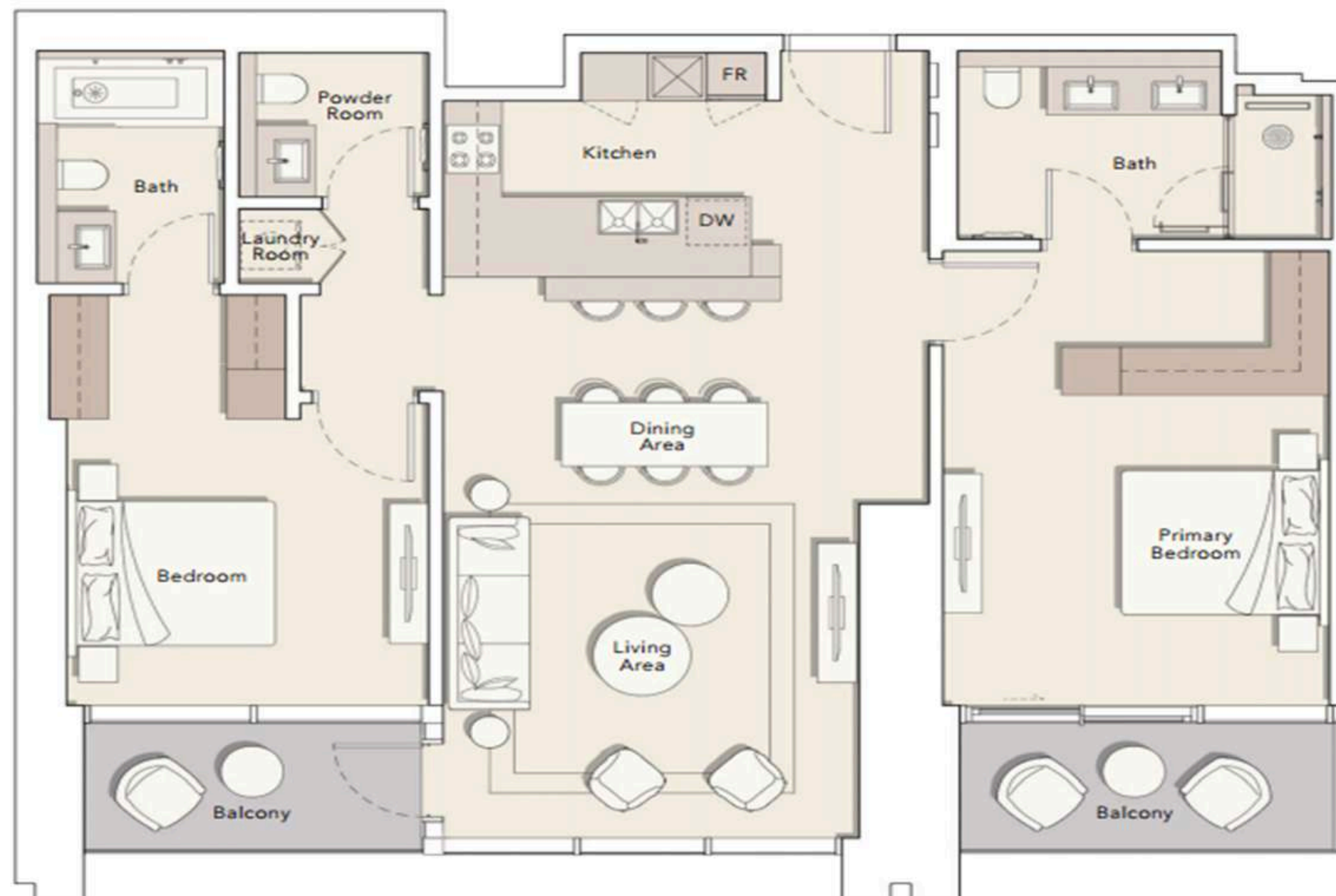
8<sup>th</sup> - 16<sup>th</sup> FLOOR





## 2 BEDROOM TYPE B

Internal Living Area : 1295.22 Sq. Ft  
Outdoor Living Area : 152.63 Sq. Ft  
Total Living Area : 1447.85 Sq. Ft



**3<sup>rd</sup> FLOOR**  
305

**7<sup>th</sup> FLOOR**  
705

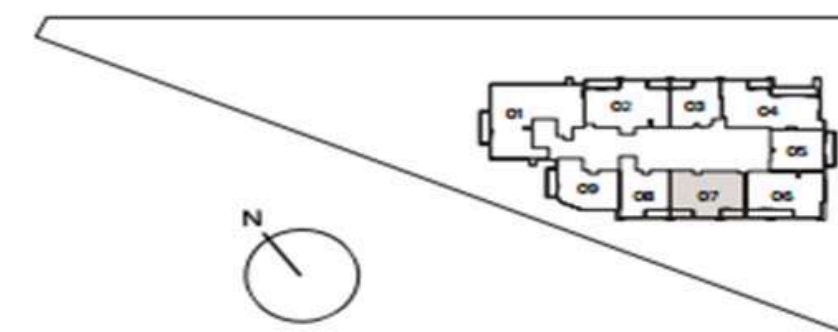
**4<sup>th</sup> FLOOR**  
405

**8<sup>th</sup> - 16<sup>th</sup> FLOOR**  
807

**5<sup>th</sup> FLOOR**  
505

**6<sup>th</sup> FLOOR**  
605

**8<sup>th</sup> - 16<sup>th</sup> FLOOR**

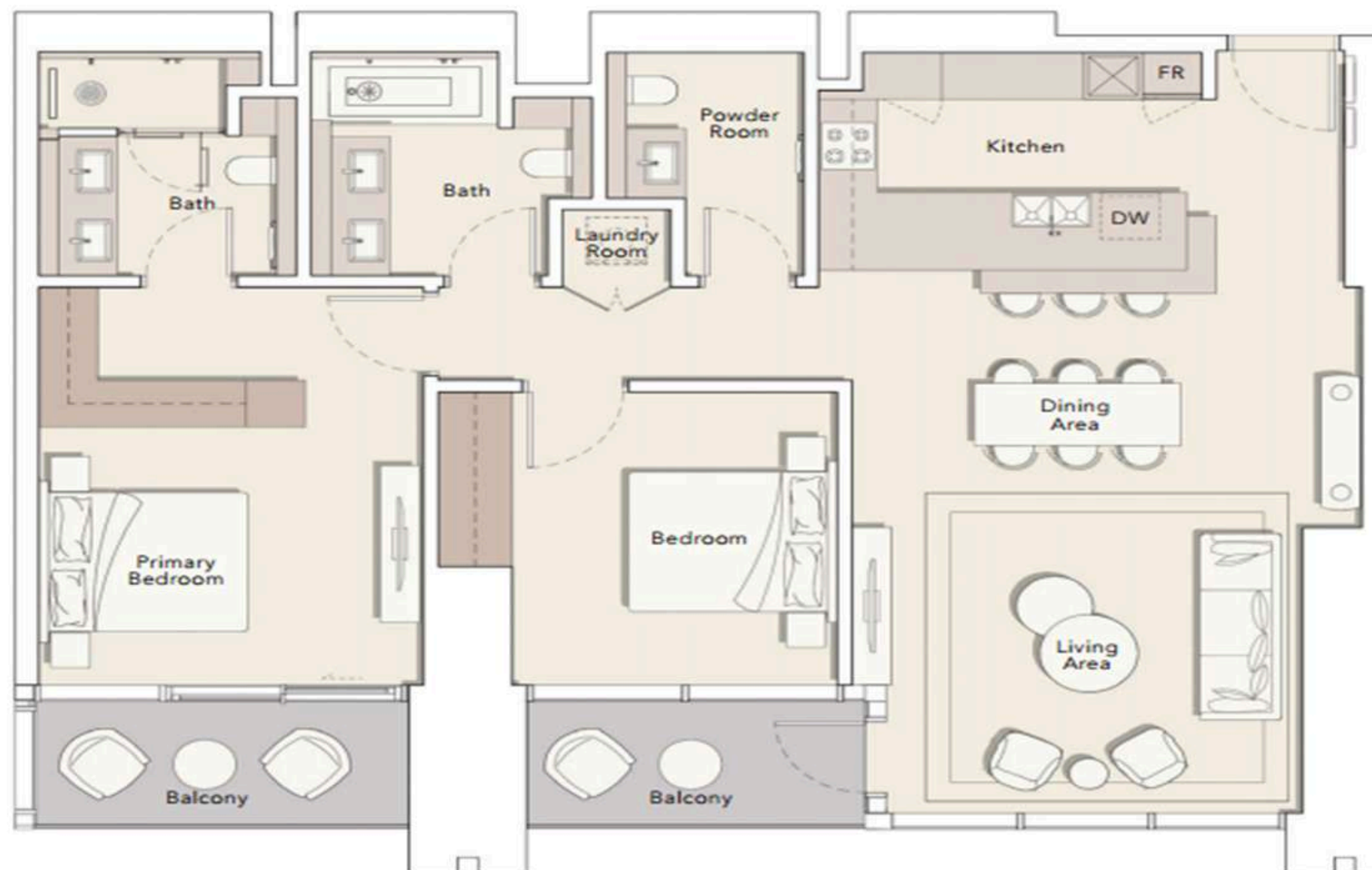




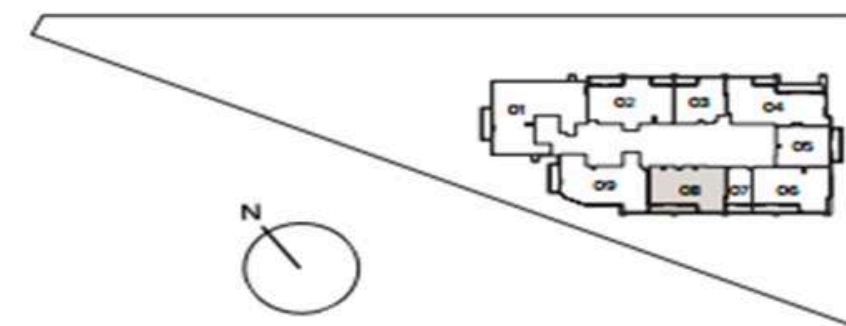
## 2 BEDROOM

TYPE C

Internal Living Area : 1328.48 Sq. Ft  
Outdoor Living Area : 151.77 Sq. Ft  
Total Living Area : 1480.25 Sq. Ft



18<sup>th</sup> - 36<sup>th</sup> FLOOR

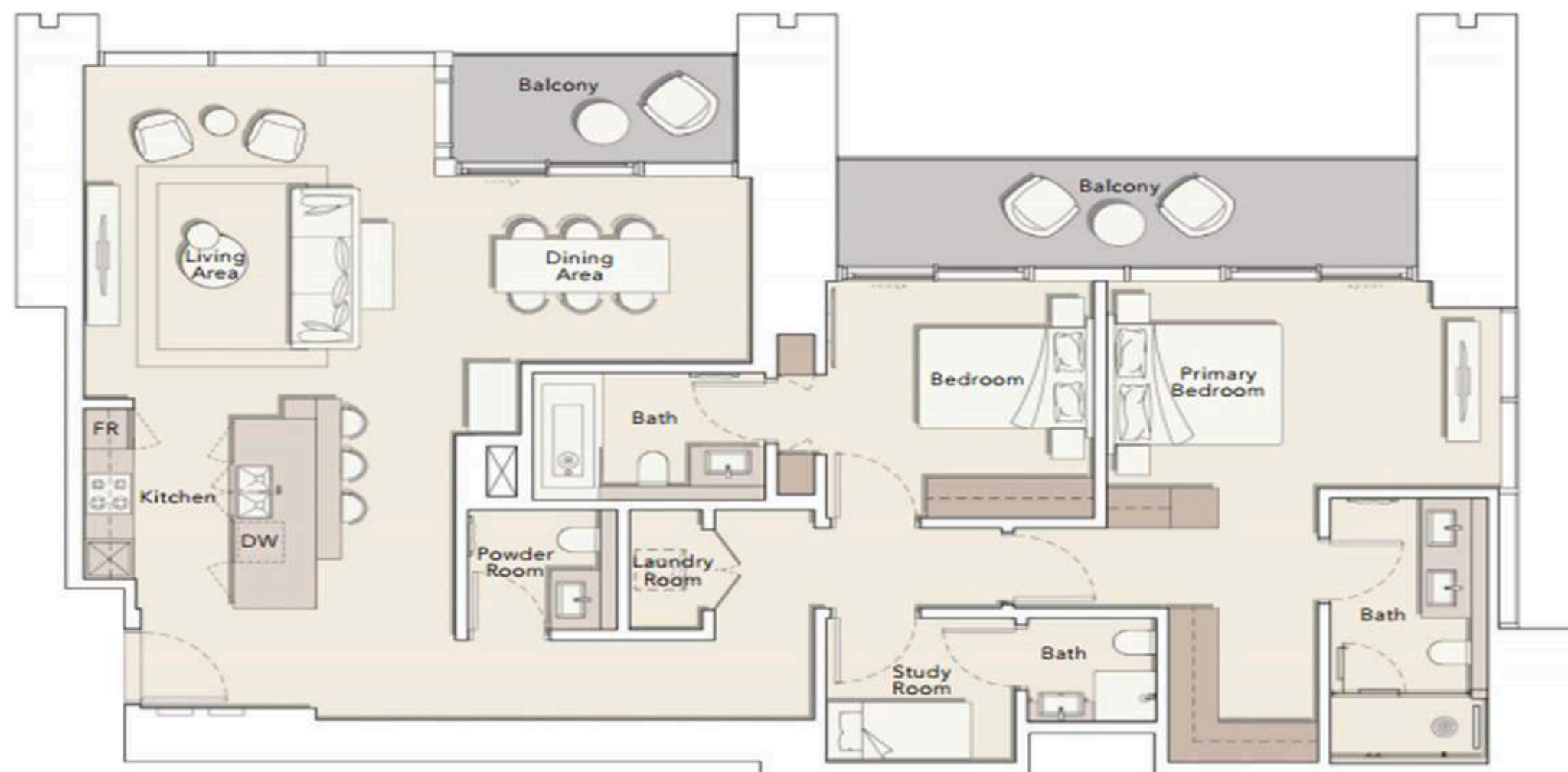




# 2 BEDROOM + S

TYPE A

Internal Living Area : 1573.04 Sq. Ft  
 Outdoor Living Area : 222.92 Sq. Ft  
 Total Living Area : 1795.96 Sq. Ft



**3<sup>rd</sup> FLOOR**  
302

**4<sup>th</sup> FLOOR**  
402

**5<sup>th</sup> FLOOR**  
502

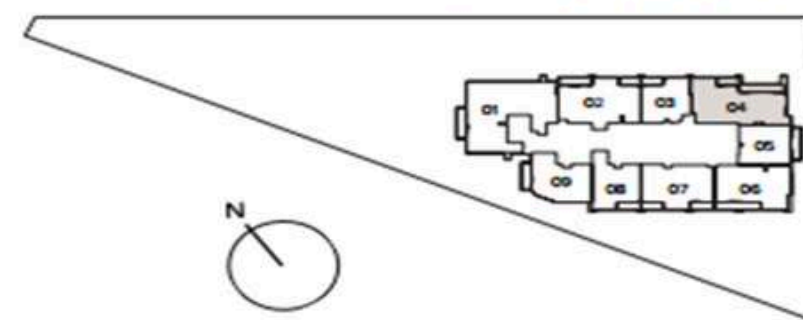
**6<sup>th</sup> FLOOR**  
602

**7<sup>th</sup> FLOOR**  
702

**8<sup>th</sup> - 16<sup>th</sup> FLOOR**  
804

**18<sup>th</sup> - 36<sup>th</sup> FLOOR**  
1804

**8<sup>th</sup> - 16<sup>th</sup> FLOOR**





## 2 BEDROOM + S

TYPE B

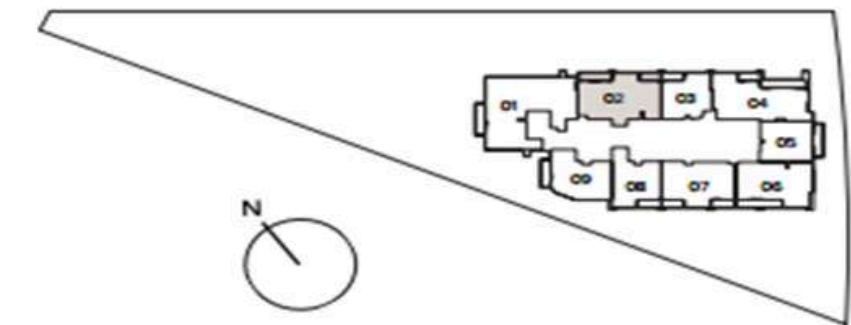


Internal Living Area : 1509.53 Sq. Ft  
Outdoor Living Area : 178.79 Sq. Ft  
Total Living Area : 1688.32 Sq. Ft

8<sup>th</sup> - 16<sup>th</sup> FLOOR  
802

18<sup>th</sup> - 36<sup>th</sup> FLOOR  
1802

8<sup>th</sup> - 16<sup>th</sup> FLOOR

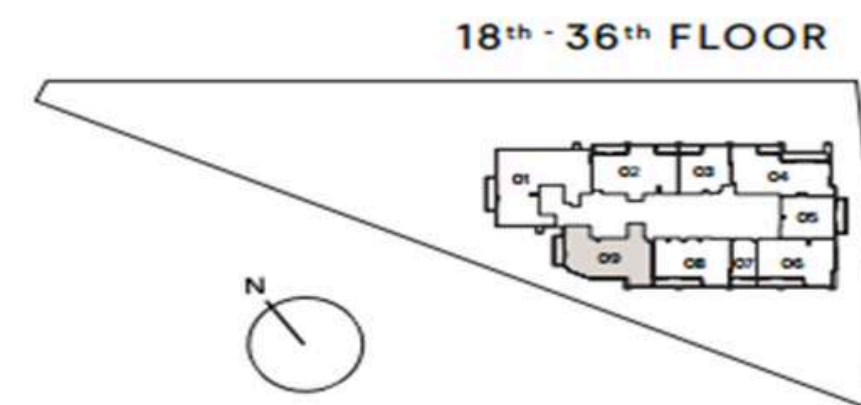
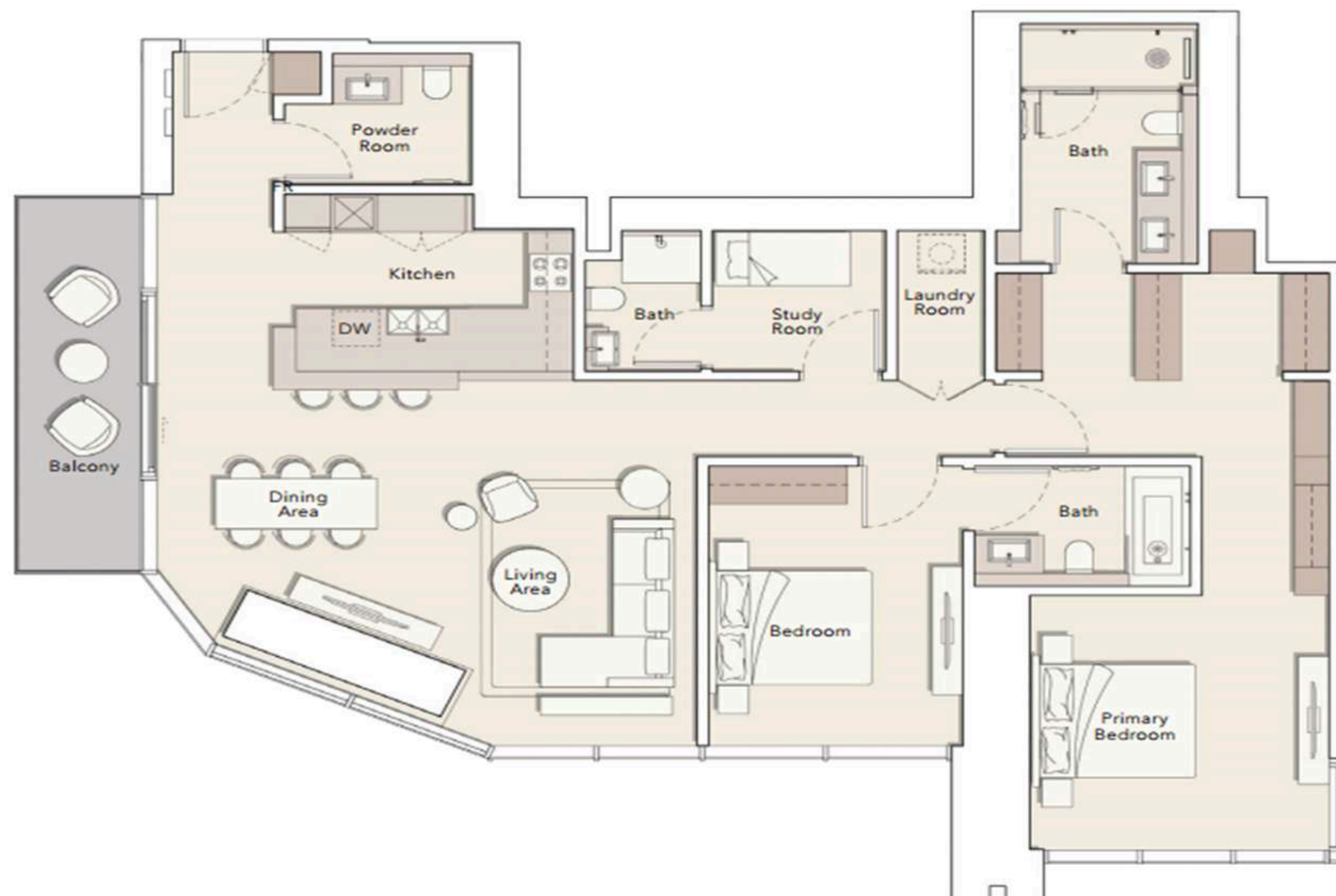




## 2 BEDROOM + S

TYPE C

Internal Living Area : 1678.20 Sq. Ft  
Outdoor Living Area : 107.10 Sq. Ft  
Total Living Area : 1785.30 Sq. Ft





# 3 BEDROOM

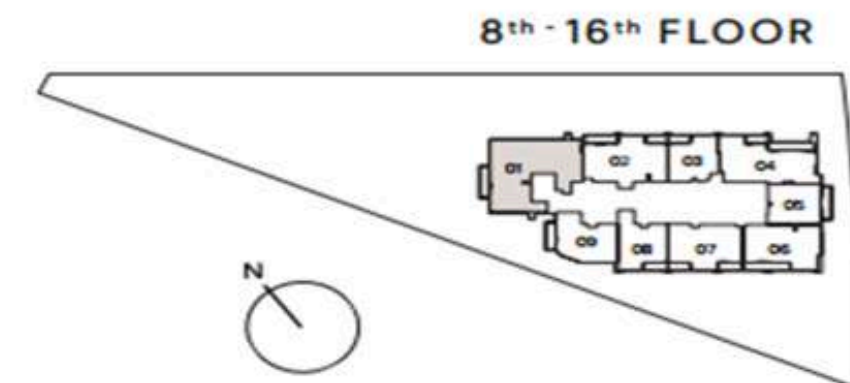
TYPE A

Internal Living Area : 2276.24 Sq. Ft  
Outdoor Living Area : 121.09 Sq. Ft  
Total Living Area : 2397.34 Sq. Ft



8<sup>th</sup> - 16<sup>th</sup> FLOOR  
801

18<sup>th</sup> - 36<sup>th</sup> FLOOR  
1801







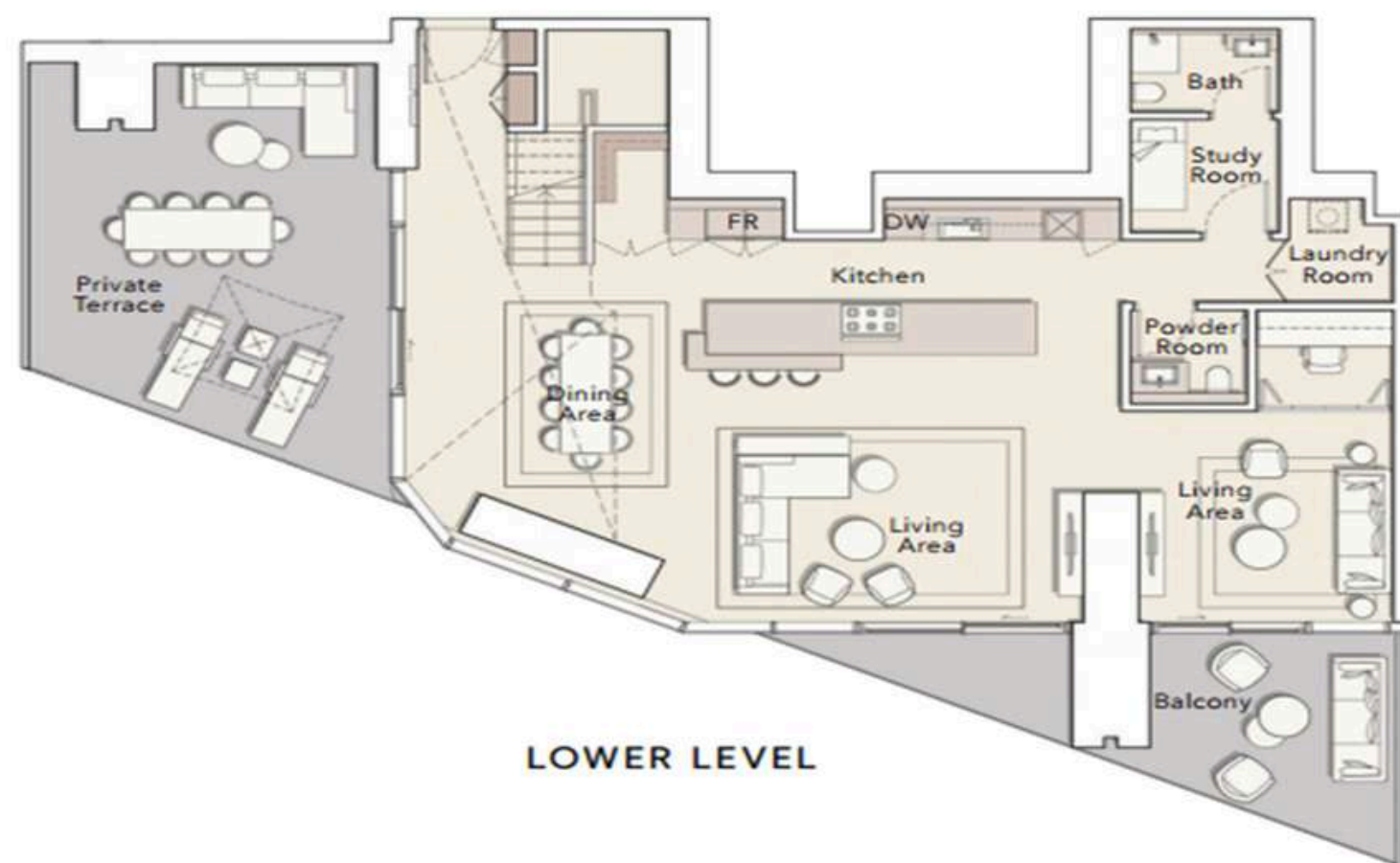
# PREMIUM APARTMENTS



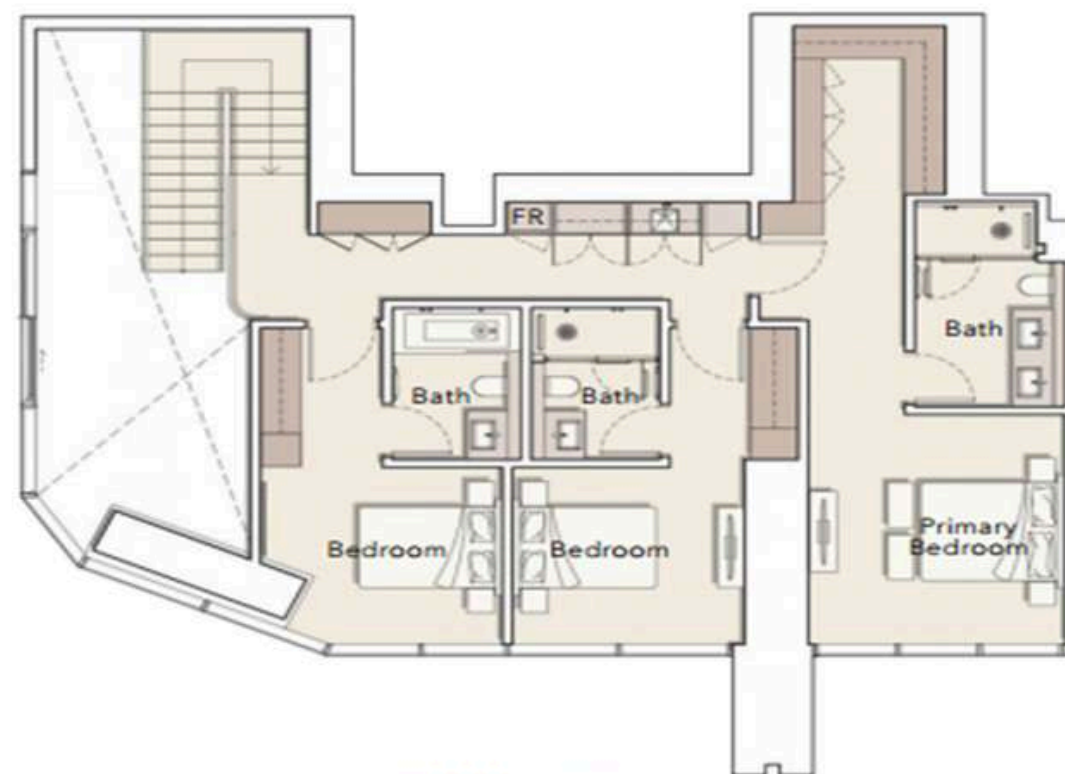
# 3 BEDROOM DUPLEX

TYPE A

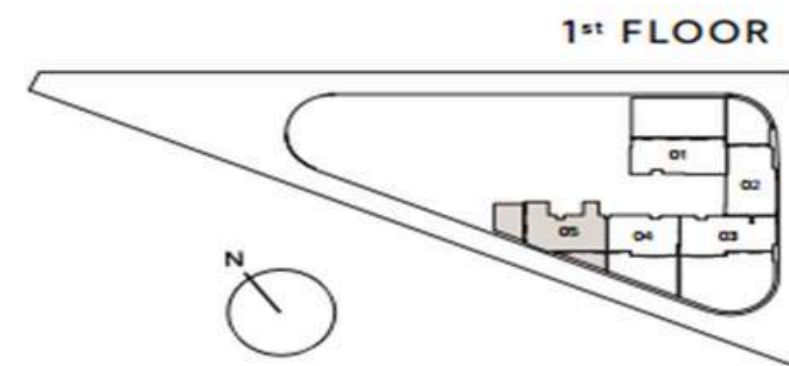
Internal Living Area : 3007.22 Sq. Ft  
Outdoor Living Area : 707.30 Sq. Ft  
Total Living Area : 3714.52 Sq. Ft



LOWER LEVEL



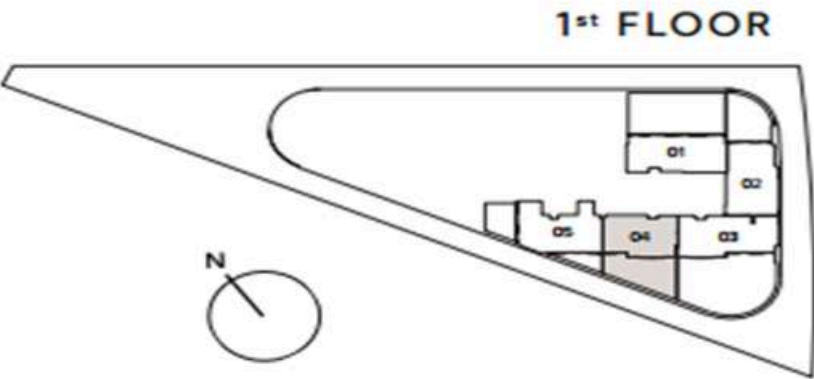
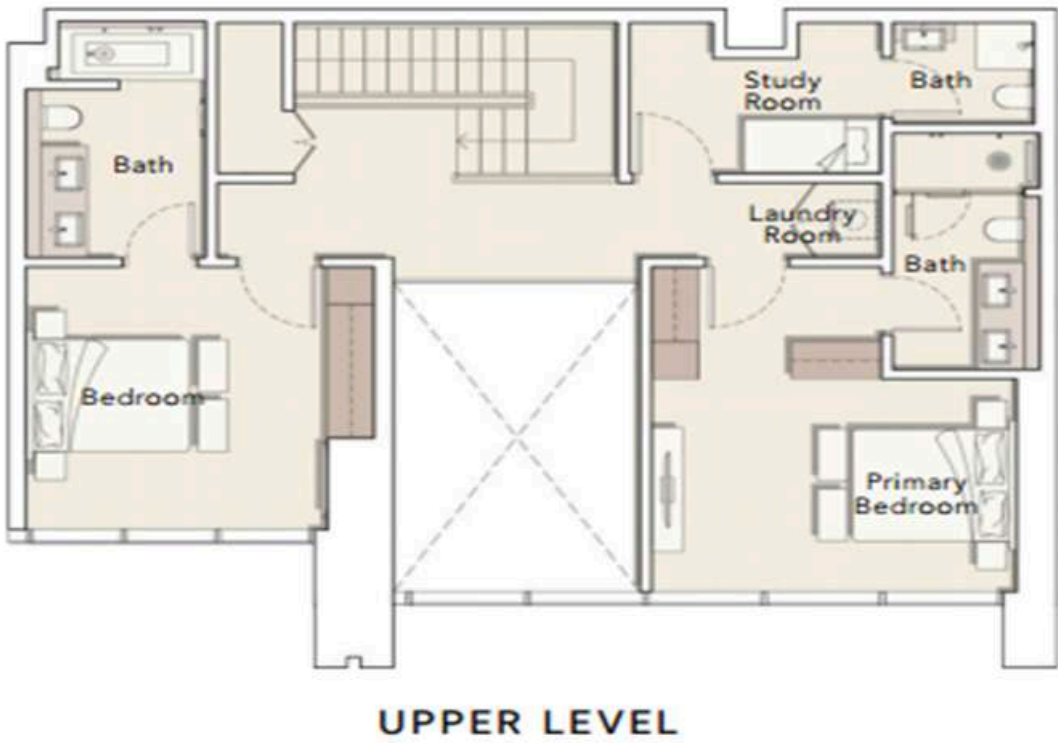
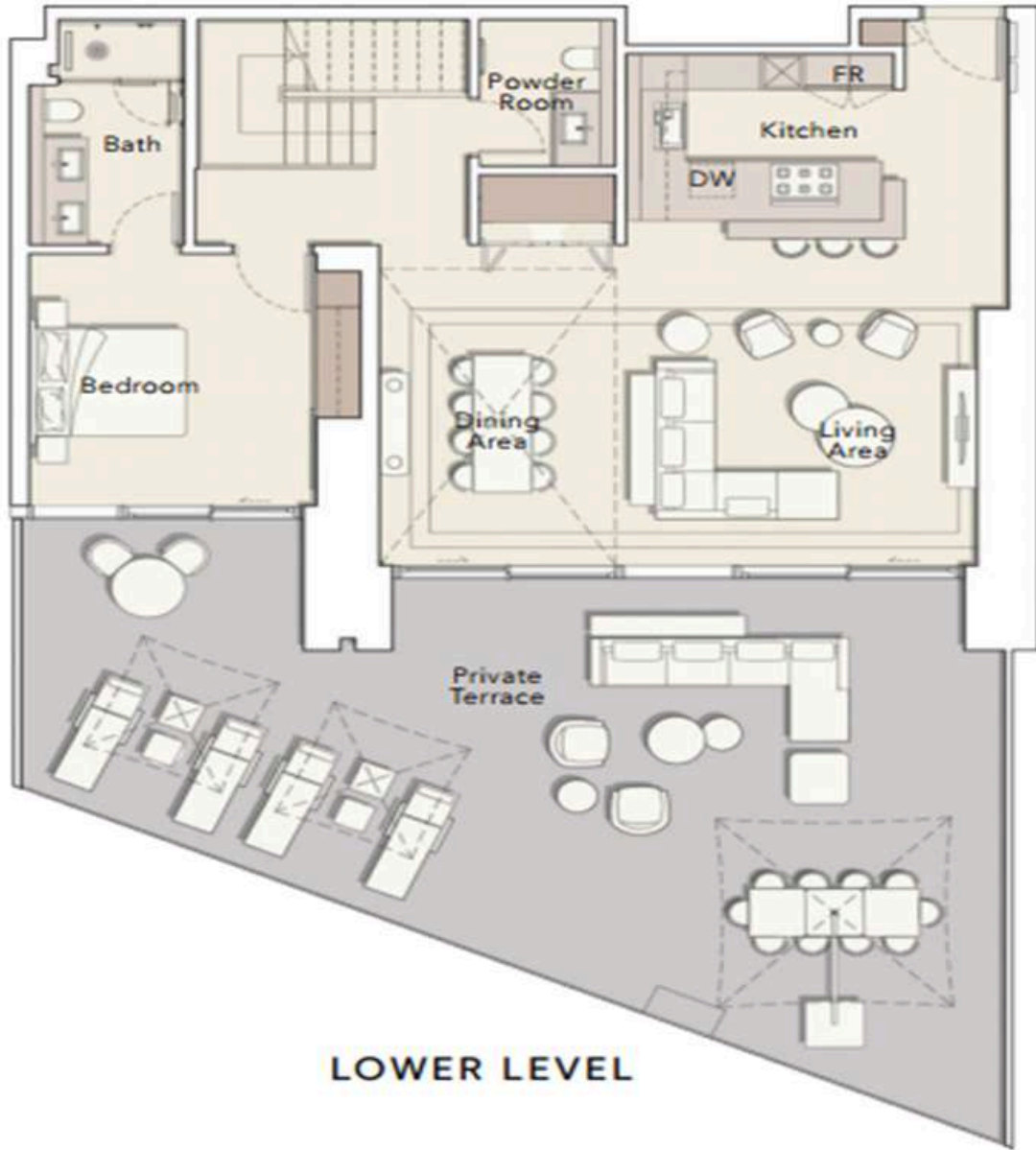
UPPER LEVEL





3 BEDROOM DUPLEX  
TYPE B

Internal Living Area : 2468.49 Sq. Ft  
Outdoor Living Area : 993.62 Sq. Ft  
Total Living Area : 3462.10 Sq. Ft

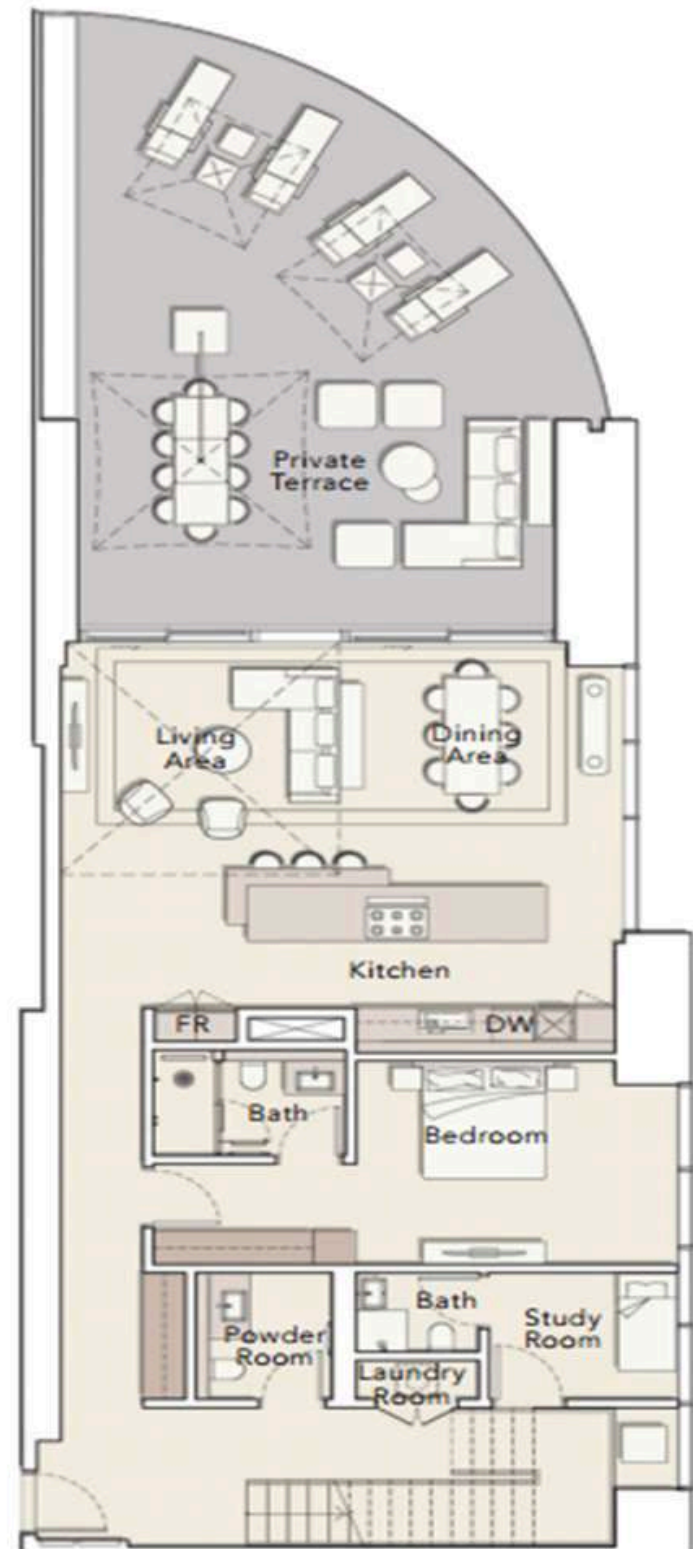




# 3 BEDROOM DUPLEX

TYPE C

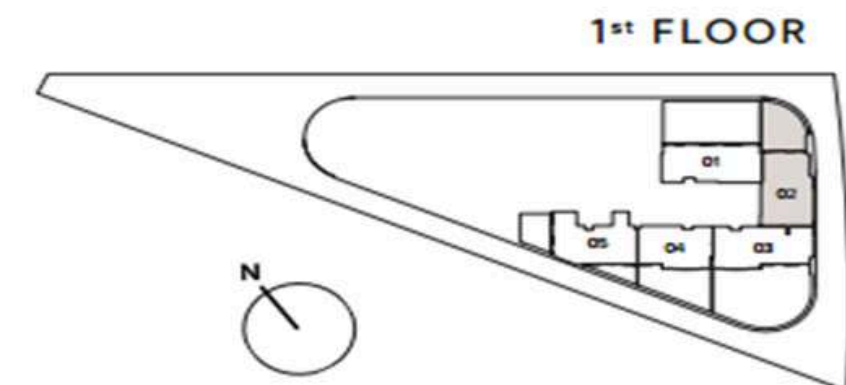
Internal Living Area : 3125.73 Sq. Ft  
Outdoor Living Area : 842.92 Sq. Ft  
Total Living Area : 3968.65 Sq. Ft



LOWER LEVEL



UPPER LEVEL

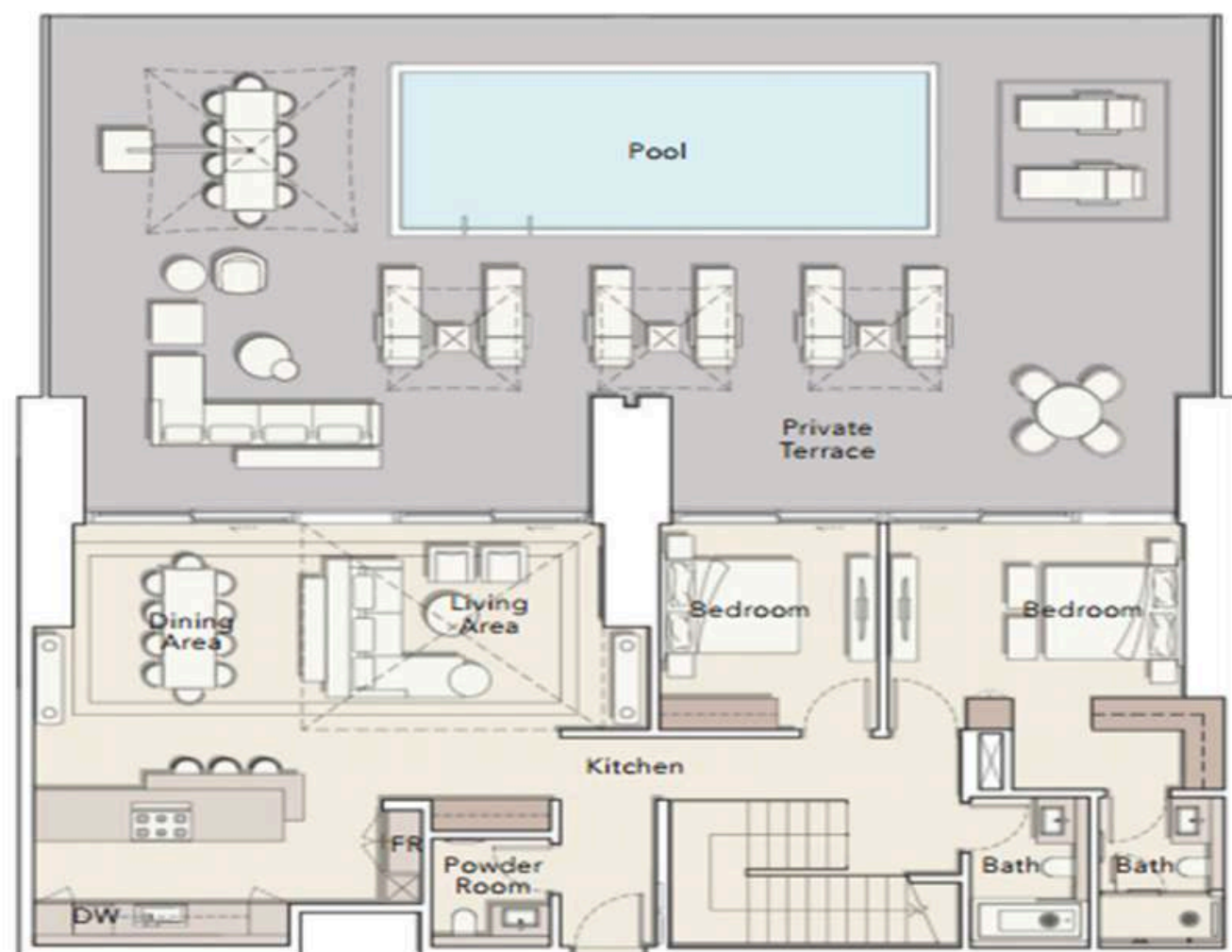




# 4 BEDROOM DUPLEX

TYPE A

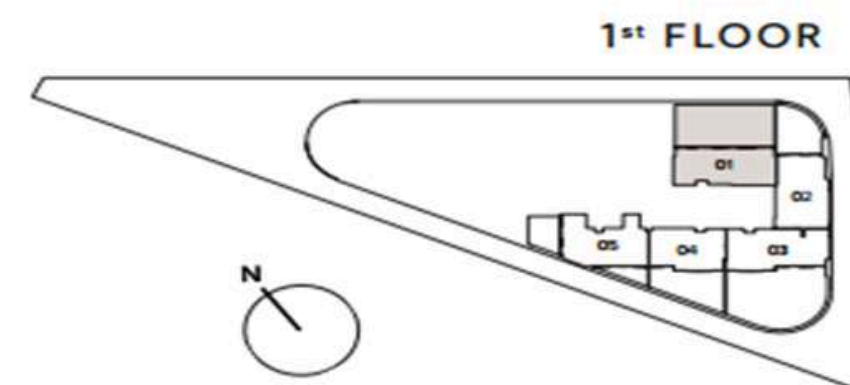
Internal Living Area : 3128.96 Sq. Ft  
Outdoor Living Area : 1842.89 Sq. Ft  
Total Living Area : 4971.85 Sq. Ft



LOWER LEVEL



UPPER LEVEL



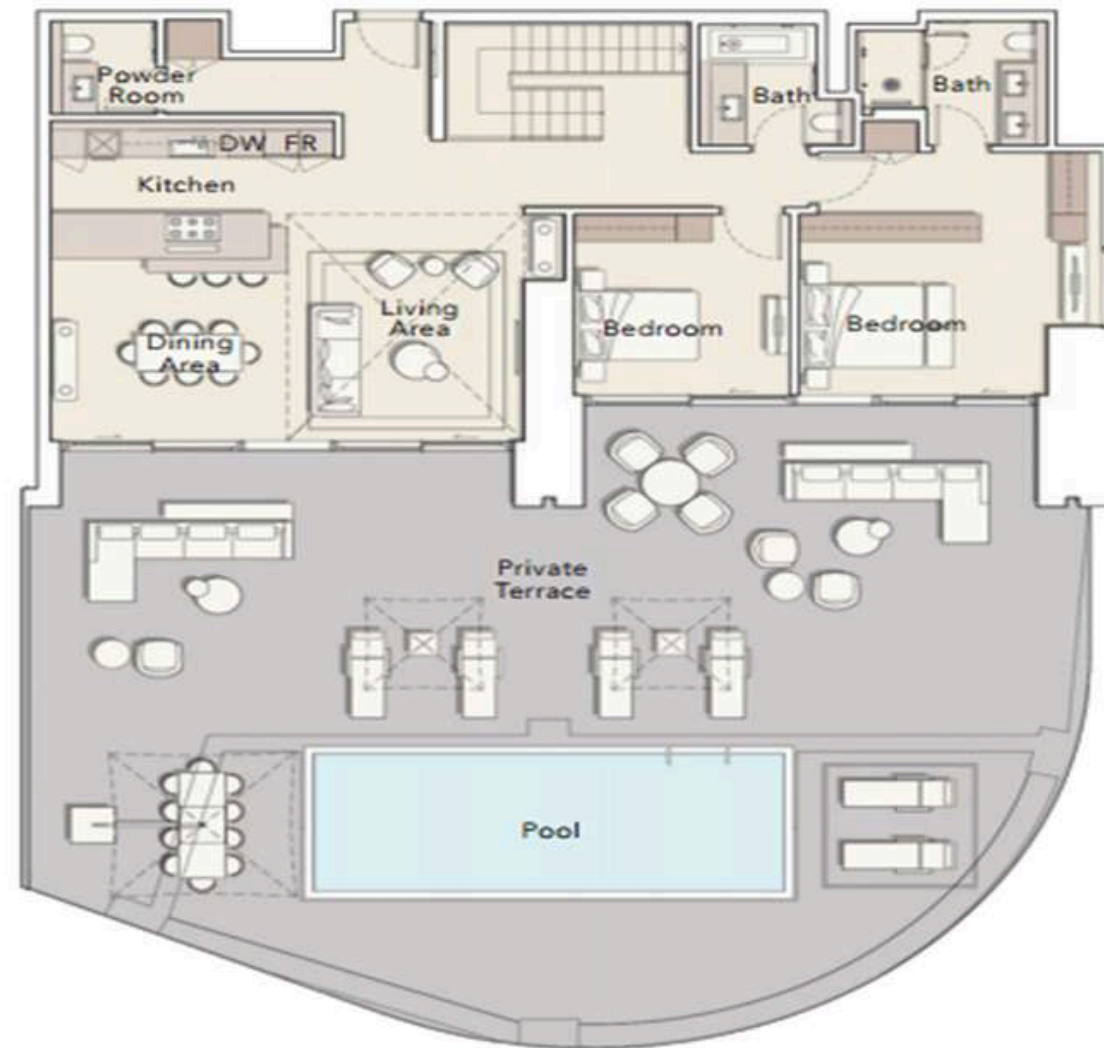
1<sup>st</sup> FLOOR



# 4 BEDROOM DUPLEX

TYPE B

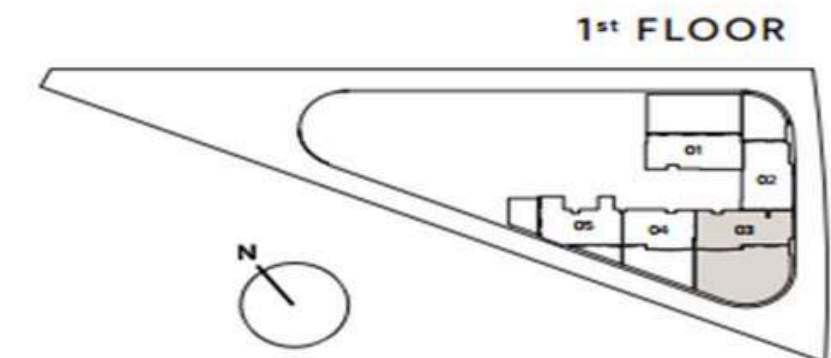
Internal Living Area : 3246.50 Sq. Ft  
Outdoor Living Area : 2329.74 Sq. Ft  
Total Living Area : 5576.24 Sq. Ft



LOWER LEVEL



UPPER LEVEL



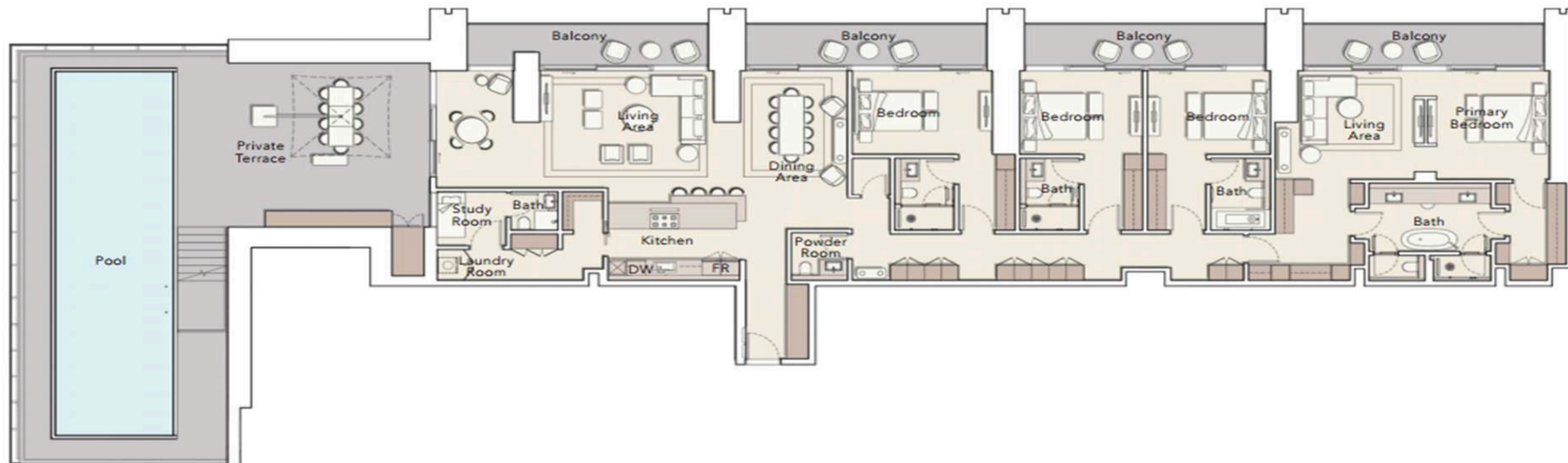
1<sup>st</sup> FLOOR



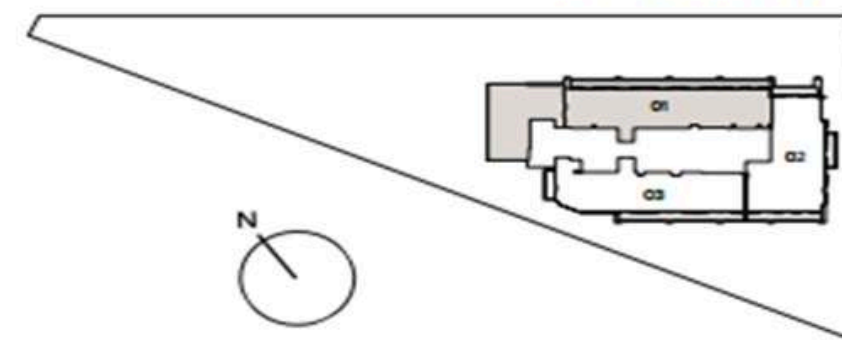
# PENTHOUSE

TYPE A

Internal Living Area : 3398.92 Sq. Ft  
Outdoor Living Area : 2448.57 Sq. Ft  
Total Living Area : 5847.49 Sq. Ft



37<sup>th</sup> FLOOR

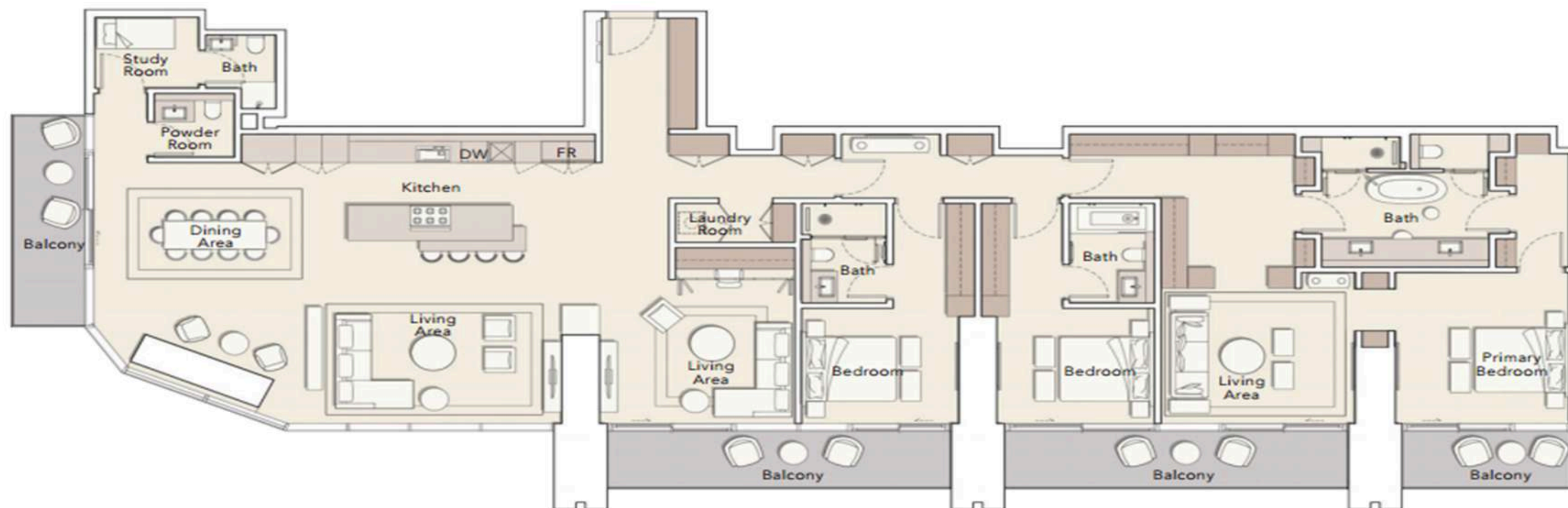




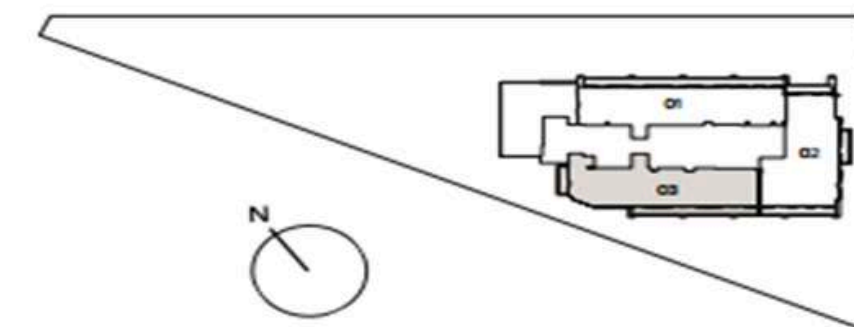
# PENTHOUSE

## TYPE B

Internal Living Area : 3221.42 Sq. Ft  
Outdoor Living Area : 513.22 Sq. Ft  
Total Living Area : 3734.65 Sq. Ft



37<sup>th</sup> FLOOR

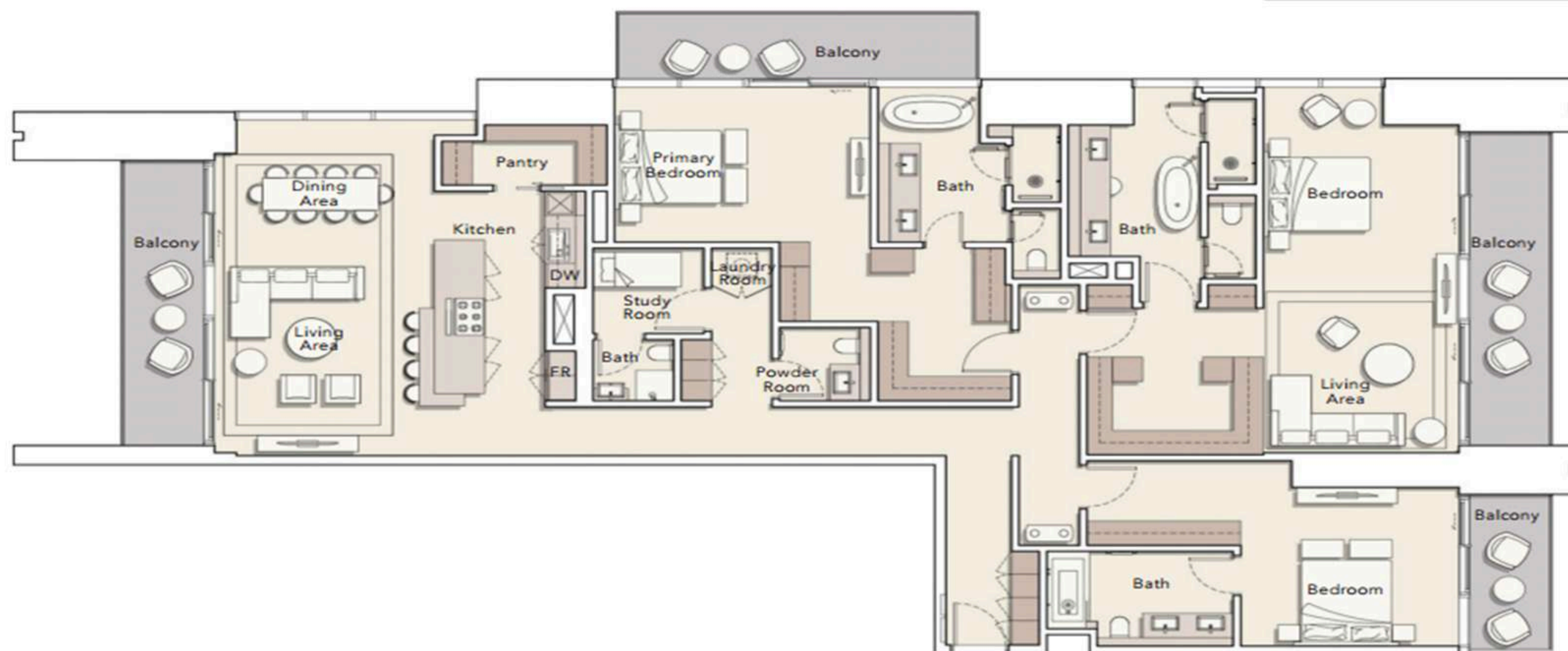




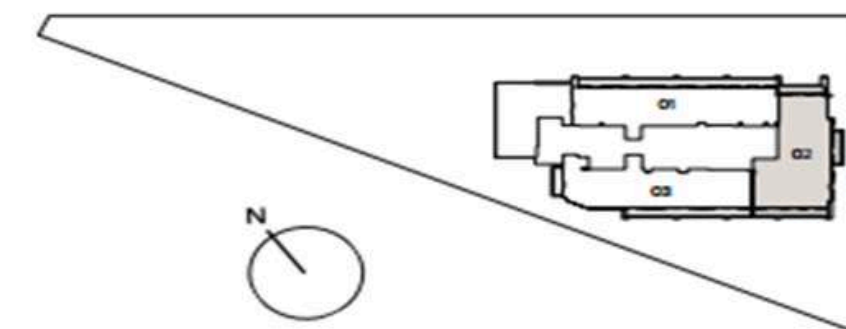
# PENTHOUSE

TYPE C

Internal Living Area : 2980.96 Sq. Ft  
Outdoor Living Area : 521.83 Sq. Ft  
Total Living Area : 3502.79 Sq. Ft



37<sup>th</sup> FLOOR







## Where Prestige Meets Property



At Majara Luxury Real Estate L.L.C., we redefine the art of luxury living. Based in the heart of the UAE, we specialize in curating exceptional real estate experiences tailored to the needs of discerning investors, end-users, and global clientele.



With a refined portfolio of premium properties across all seven Emirates, our expertise lies in both off-plan and ready-to-move assets, offering opportunities that blend architectural excellence with investment potential.



We are more than just property consultants & we are partners in your journey to finding the perfect home, investment, or lifestyle. Driven by integrity, market insight, and personalized service, Majara stands as a trusted name in an ever-evolving market.

### Contact Us :

**Phone: +971564452803**

**Email: [info@majararealestate.com](mailto:info@majararealestate.com)**

**<https://majararealestate.com/>**