

A modern, curved building with large glass windows and balconies, illuminated from within, overlooking a body of water at dusk. The building's design is sleek and contemporary, with multiple levels visible. The balconies are furnished with lounge chairs and small tables. The water reflects the city lights in the distance, including the Burj Khalifa and the Burj Al Arab. Palm trees are visible in the foreground on the right side.

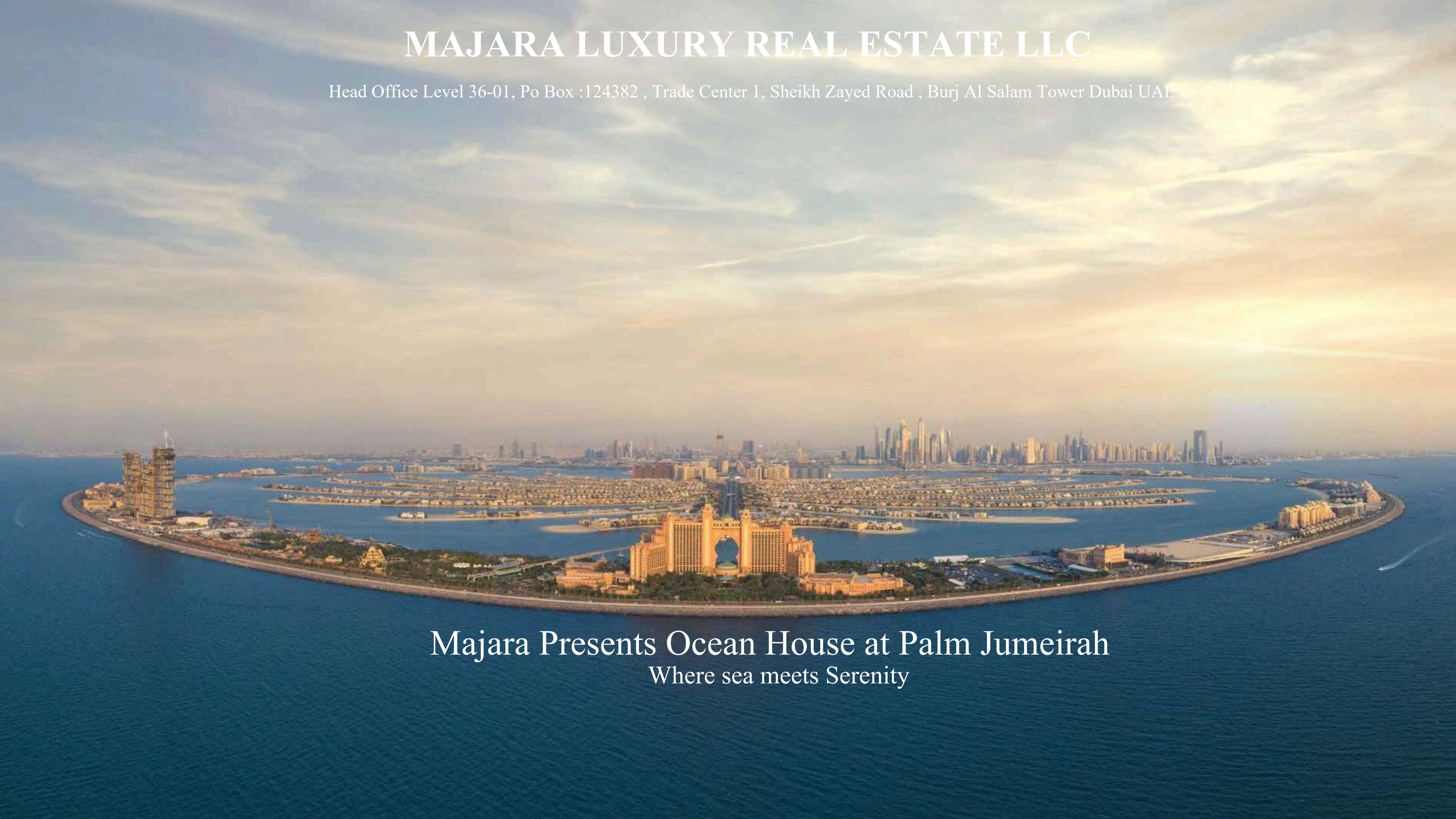
# OCEAN HOUSE

Welcome to the seamless state of flow



# MAJARA LUXURY REAL ESTATE LLC

Head Office Level 36-01, Po Box :124382 , Trade Center 1, Sheikh Zayed Road , Burj Al Salam Tower Dubai UAE



Majara Presents Ocean House at Palm Jumeirah  
Where sea meets Serenity



**01  
MINUTE**  
The Boardwalk Palm Jumeirah

**02  
MINUTES**  
Atlantis The Palm

**05  
MINUTES**  
The Pointe Palm Jumeirah

**10  
MINUTES**  
The View at The Palm

**10  
MINUTES**  
Nakheel Mall

**15  
MINUTES**  
Dubai Marina

**15  
MINUTES**  
Dubai Harbour

**20  
MINUTES**  
Emirates Golf Club

**20  
MINUTES**  
Burj Al Arab

**25  
MINUTES**  
Ain Dubai

**25  
MINUTES**  
Mall of The Emirates

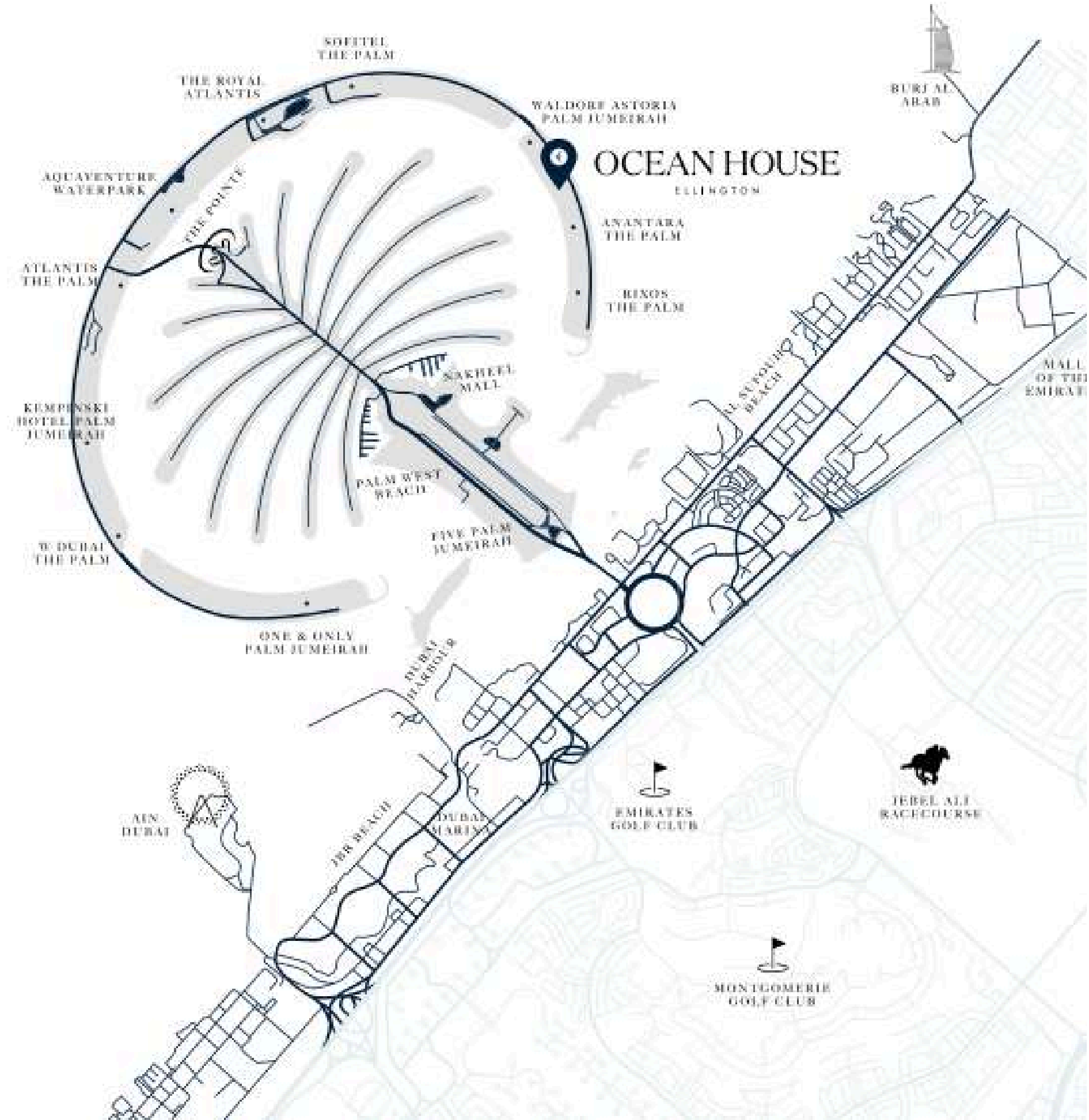
**25  
MINUTES**  
Dubai Mall & Burj Khalifa

**25  
MINUTES**  
Museum of the Future

**30  
MINUTES**  
Dubai International Financial Centre

**35  
MINUTES**  
Dubai International Airport

**38  
MINUTES**  
Dubai World Central Airport







The building's flowing physical facade is akin to the way the interiors fit seamlessly with the lives and lifestyles of its residents — a place to find a new way to co-exist with the ocean.





Drop-Off Area





Lobby



# Follow the Ocean

At Ocean House, a 'lifestyle' is not defined by how many amenities are on offer, or even by how exclusive they are. Here, they are transformed into experiences, made unforgettable by design.



Building Configuration

9 Residential Floors  
Ground Floor  
Basement Floor

Parking

2 bedrooms: 1 parking  
3 bedrooms: 2 parking spaces  
4 bedrooms: 3 parking spaces

Elevators

4 passenger elevators  
4 service elevators

Anticipated completion date

Q4 2025

Anticipated service charge

AED 25 per sq.ft







Ocean House





**Wellness Spa**

**Fitness Studio**





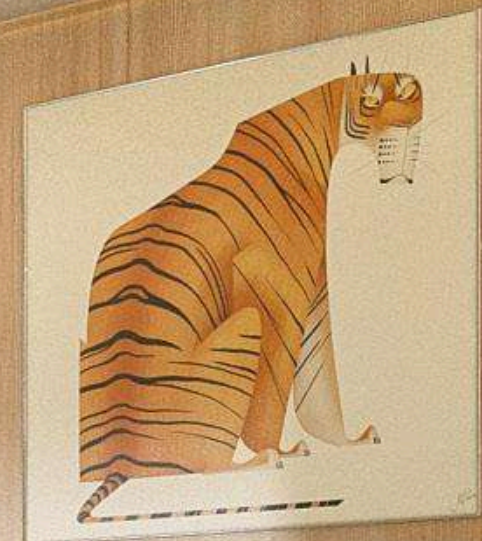


The Clubhouse





A B C D E F G H  
I J K L M N O  
P Q R S T U  
V W X Y Z ! ?  
1 2 3 4 5 6 7 8  
..... 8 9 0 .....



Children Play Area



**Games Room**



**Library**







Co-working Space





Cinema Room





## Living Room

Upon an expanse of natural marble that extends through the apartments, sumptuous living spaces look out across the water from curved balconies – with Royal Atlantis to the West and Burj Al Arab to the North East. These stunning rooms are adorned in plush furnishing and the finer details of living.





Kitchen





Oasis Pool





Ocean House



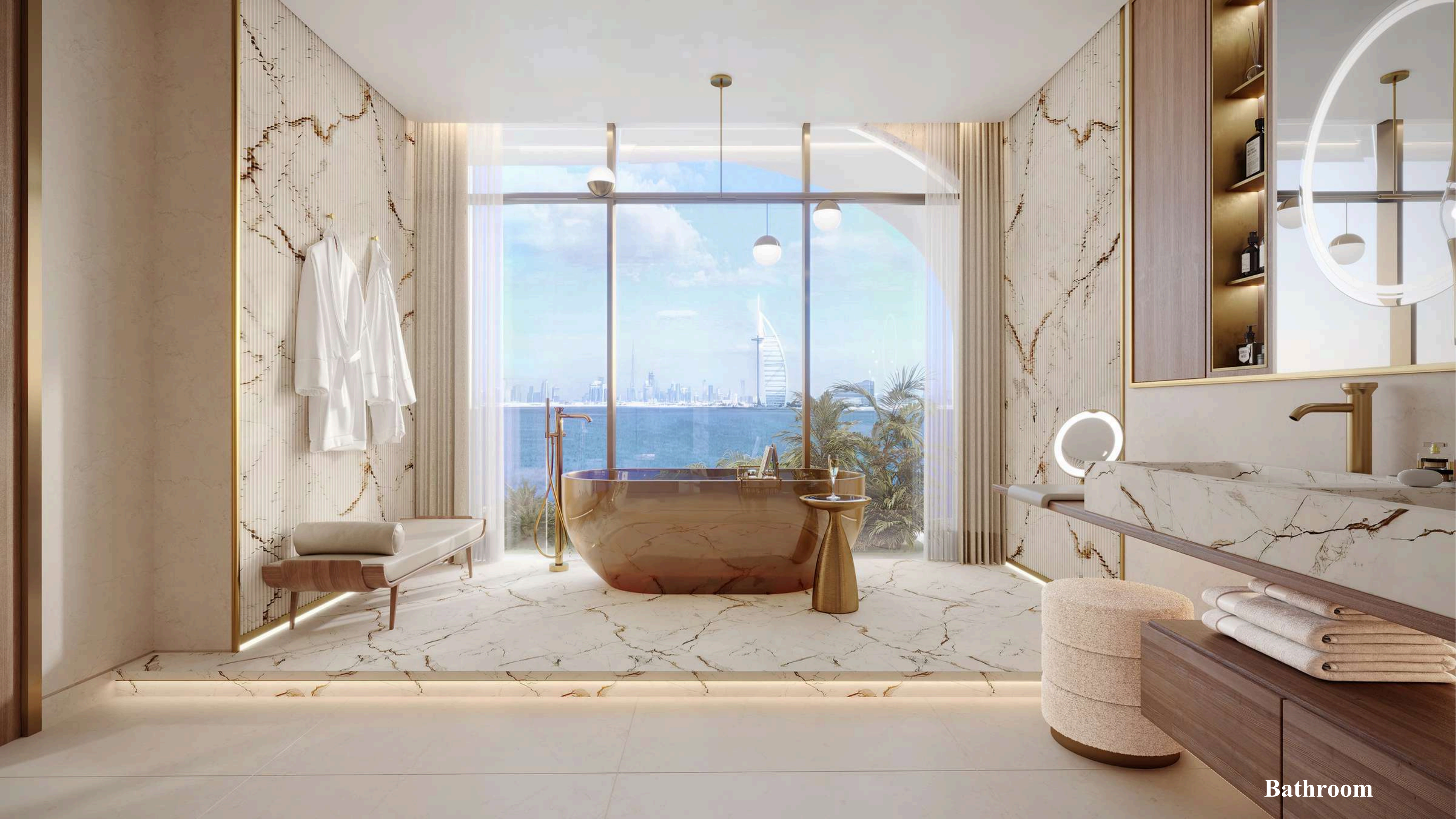


## BEDROOM

### Your Private View Of The Ocean

The most intimate spaces in the building, bedrooms can be soothing, rejuvenating, awakening and nourishing over 24 hours. They are designed to give every resident a unique sense of belonging by harmonizing with their lifestyles as seamlessly as the sun rising over the ocean and setting over the Dubai skyline





Bathroom









Penthouse Bedroom





**Penthouse Private Pool**





Ocean House



A photograph of a modern, curved building with multiple levels of glass balconies. The building is surrounded by palm trees and other tropical vegetation. In the background, the Burj Al Arab is visible against a clear sky. The text "FLOOR PLANS" is overlaid in the center of the image.

# FLOOR PLANS

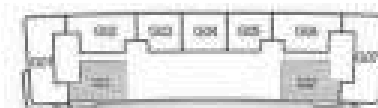


# 2 BEDROOM SINGLE ASPECT



Internal Living Area	1895.42 sq.ft
Outdoor Living Area	153.82 sq.ft
Total Living Area	2049.23 sq.ft

1<sup>st</sup> Floor

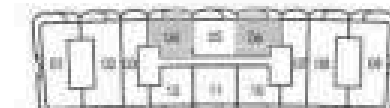


# 2 BEDROOM SINGLE ASPECT TYPE A



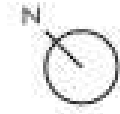
Internal Living Area	1519.22 sq.ft
Outdoor Living Area	266.62 sq.ft
Total Living Area	1785.84 sq.ft

2<sup>nd</sup> Floor — 7<sup>th</sup> Floor



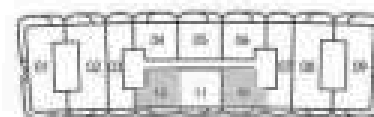


1 BEDROOM SINGLE ASPECT  
TYPE B



Internal Living Area	1470.78 sq.ft
Outdoor Living Area	171.47 sq.ft
Total Living Area	1642.25 sq.ft

2<sup>nd</sup> Floor — 7<sup>th</sup> Floor

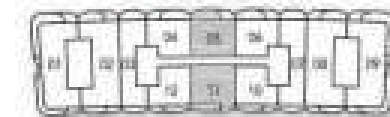


2 BEDROOM SINGLE ASPECT  
TYPE C



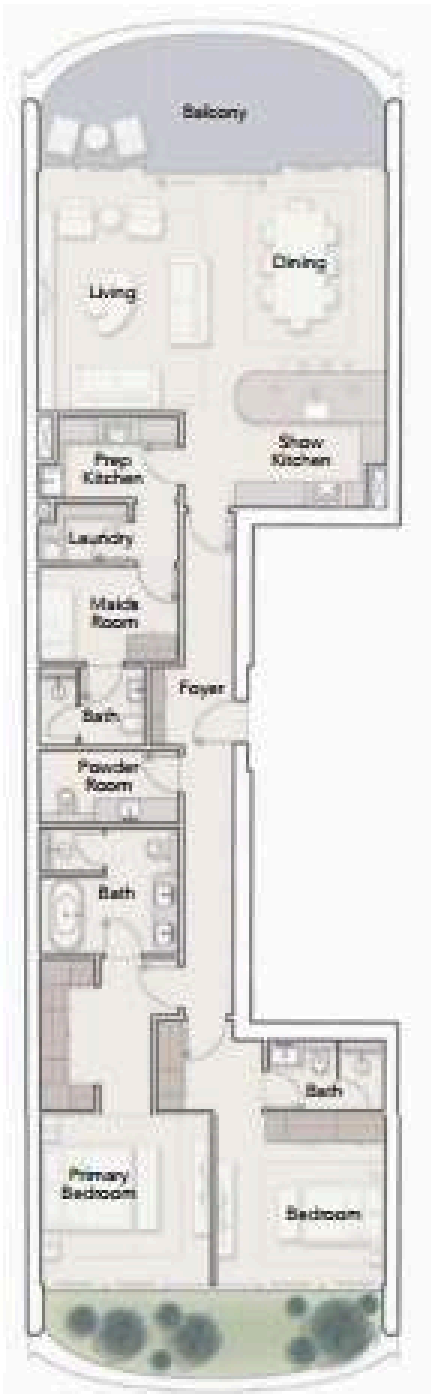
Internal Living Area	1665.28 sq.ft
Outdoor Living Area	261.67 sq.ft
Total Living Area	1926.95 sq.ft

2<sup>nd</sup> Floor — 7<sup>th</sup> Floor





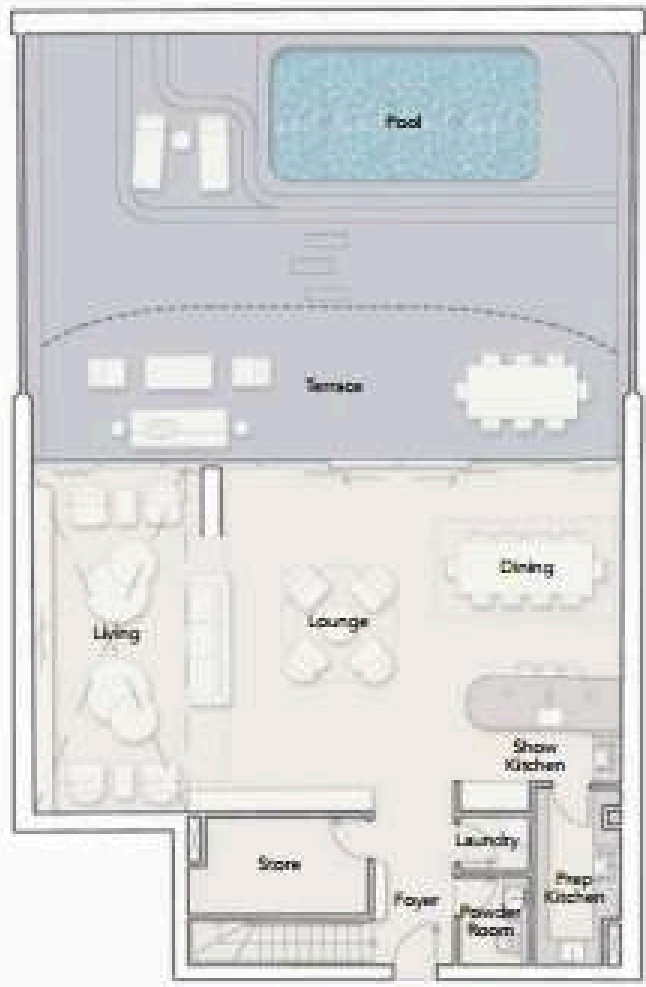
2 BEDROOM DUAL ASPECT



Internal Living Area	1879.27 sq.ft
Outdoor Living Area	238.96 sq.ft
Total Living Area	2118.23 sq.ft



2 BEDROOM DUAL DUPLEX



Lower Level



Upper Level

Internal Living Area	2770.41 sq.ft
Outdoor Living Area	1443.44 sq.ft
Total Living Area	4213.85 sq.ft



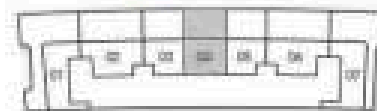


### 3 BEDROOM DUPLEX



Internal Living Area	3325.94 sq.ft
Outdoor Living Area	1443.98 sq.ft
Total Living Area	4769.91 sq.ft

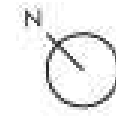
Ground Floor (Lower Level)



1<sup>st</sup> Floor (Upper Level)

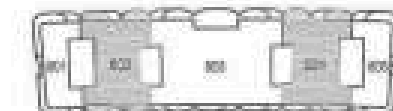


### 4 BEDROOM DUAL ASPECT



Internal Living Area	4720.83 sq.ft
Outdoor Living Area	631.52 sq.ft
Total Living Area	5352.35 sq.ft

1<sup>st</sup> Floor



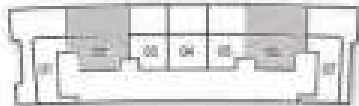


4 BEDROOM DUPLEX



Internal Living Area	3909.45 sq.ft
Outdoor Living Area	2230.28 sq.ft
Total Living Area	6139.73 sq.ft

Ground Floor (Lower Level)



1<sup>st</sup> Floor (Upper Level)

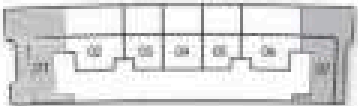


4 BEDROOM DUPLEX  
CORNER UNIT



Internal Living Area	4207.29 sq.ft
Outdoor Living Area	5710.03 sq.ft
Total Living Area	9917.32 sq.ft

Ground Floor (Lower Level)



1<sup>st</sup> Floor (Upper Level)



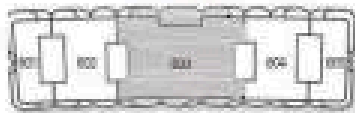


PRESIDENTIAL SUITE  
6 BEDROOM DUAL ASPECT



Internal Living Area	9917.32 sq.ft
Outdoor Living Area	1852.79 sq.ft
Total Living Area	11770.11 sq.ft

8<sup>th</sup> Floor

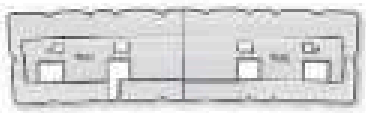


PENTHOUSE  
5 BEDROOM CORNER ASPECT



Internal Living Area	5952.97 sq.ft
Outdoor Living Area	8083.90 sq.ft
Total Living Area	14036.88 sq.ft

9<sup>th</sup> Floor







## Where Prestige Meets Property



At Majara Luxury Real Estate L.L.C., we redefine the art of luxury living. Based in the heart of the UAE, we specialize in curating exceptional real estate experiences tailored to the needs of discerning investors, end-users, and global clientele.



With a refined portfolio of premium properties across all seven Emirates, our expertise lies in both off-plan and ready-to-move assets, offering opportunities that blend architectural excellence with investment potential.



We are more than just property consultants & we are partners in your journey to finding the perfect home, investment, or lifestyle. Driven by integrity, market insight, and personalized service, Majara stands as a trusted name in an ever-evolving market.

### Contact Us :

**Phone: +971564452803**

**Email: [info@majararealestate.com](mailto:info@majararealestate.com)**

**<https://majararealestate.com/>**