

# GLAM RESIDENCE

Glam Residence, Al Zorah – Luxury Coastal Living in Ajman

# MAJARA LUXURY REAL ESTATE LLC

Head Office Level 36-01, Po Box :124382 , Trade Center 1, Sheikh Zayed Road , Burj Al Salam Tower Dubai UAE

**Majara Presents Glam Residence – A New Benchmark of Elegance in Al Zorah**





# Discover a New Era of Luxury Living at Glam Residence

Nestled in the vibrant community of Al Zorah, Glam Residence offers a perfect blend of contemporary design and unparalleled comfort. Featuring a variety of thoughtfully crafted homes—from chic studios to spacious one-, two-, and three-bedroom apartments, plus an exclusive penthouse with panoramic views—this development caters to every lifestyle. At Glam Residence, every day feels like a luxurious escape.



# Al Zorah: The Benchmark of World-Class Living

This thoughtfully planned community provides a variety of world-class amenities and facilities, ensuring every resident finds comfort, convenience, and enjoyment.























# NATURE AND RECREATION

**Lush Mangroves:** Explore the serene beauty of the mangroves through kayaking or simply enjoy leisurely walks along the scenic trails.  
Championship Golf Course: Tee off at the stunning Al Zorah Golf Club, a golfer's paradise.

**Pristine Beach:** Relax and unwind on the powdery white sands of Al Zorah Beach, perfect for sunbathing, swimming, and water sports.

**Water Sports:** Experience the thrill of water sports, including jet skiing, paddle boarding, and more at Al Zorah City







## LIFESTYLE AND WELLNESS

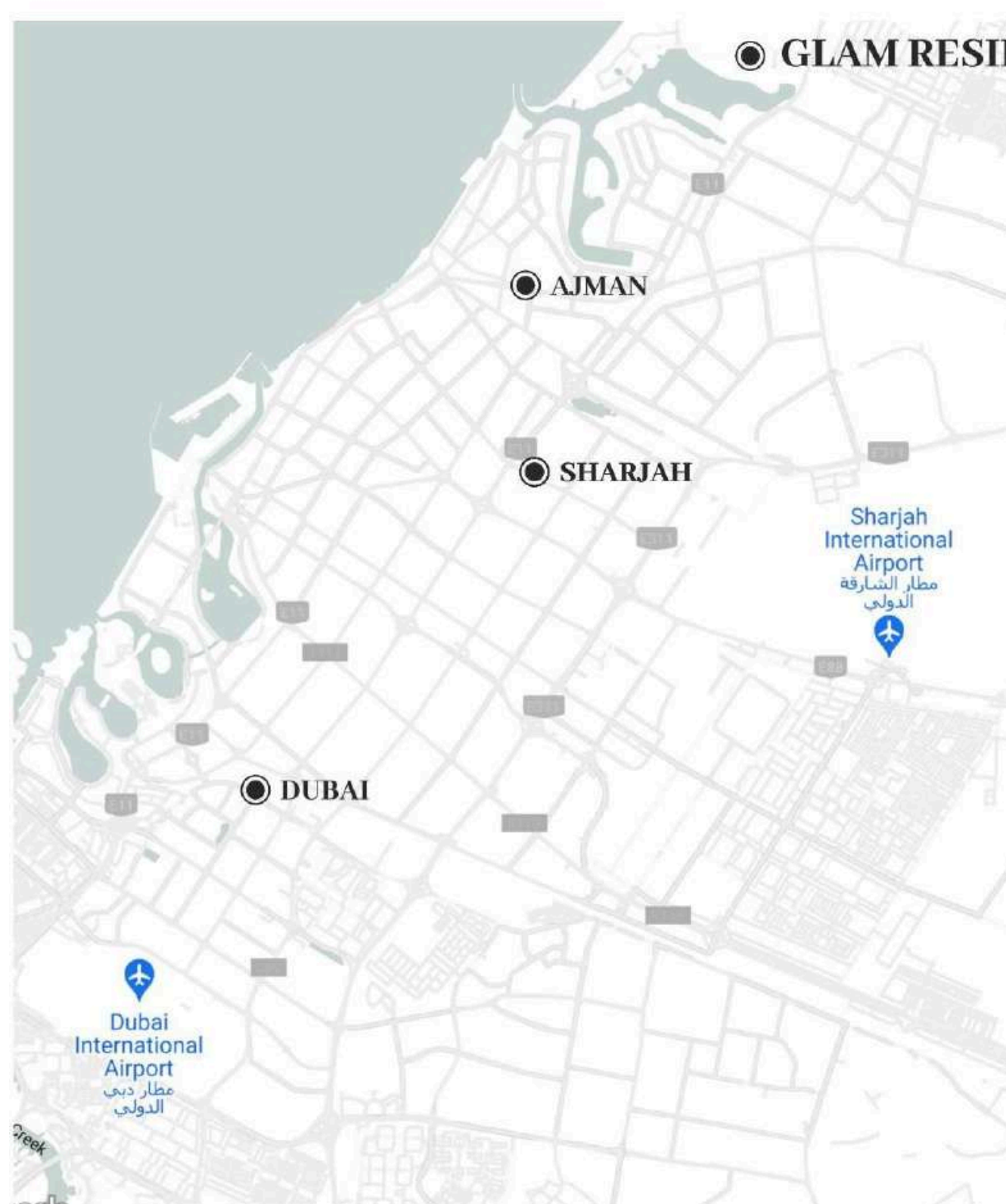
**The Oberoi Beach Resort:** Indulge in world-class hospitality, fine dining, and rejuvenating spa treatments.

**Retail and Dining:** Explore a variety of shops, boutiques, and restaurants offering a diverse culinary experience.

**Fitness and Wellness:** Maintain an active lifestyle with state-of-the-art fitness facilities, including gyms, yoga studios, and outdoor workout areas.

**Community Parks:** Enjoy picnics, barbecues, and family fun in the beautifully landscaped community parks.





## CONVENIENCE & ACCESSIBILITY

**Marina:** Explore the vibrant marina, home to luxury yachts and offering a range of water-based activities.

**Schools and Healthcare:** Easy access to international schools and top-tier healthcare facilities.

**Transportation Links:** Convenient access to major highways and public transportation options.

### CLOSE PROXIMITY:

Ajman City Center

🚗 08 mins

Sh. Khalifa Hospital Ajman

🚗 08 mins

Sharjah International Airport

🚗 24 mins

Ajman University

🚗 08 mins

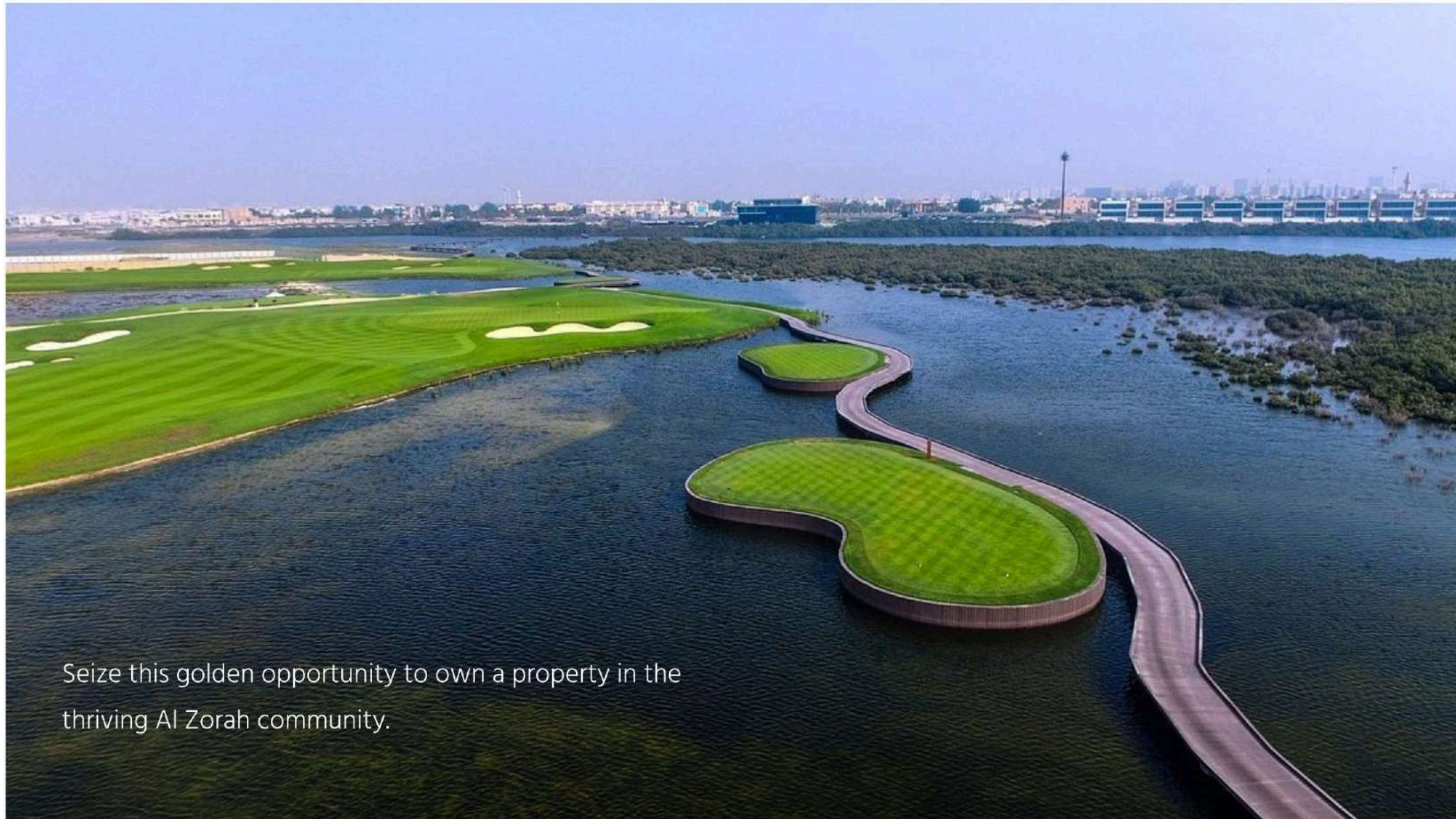
Al Zorah Beach

🚗 07 mins

Dubai International Airport

🚗 35 mins





Seize this golden opportunity to own a property in the thriving Al Zorah community.



# OWN YOUR SLICE OF PARADISE WITH GLAM RESIDENCE.

Enjoy unparalleled investment opportunities and a luxurious lifestyle with these exceptional features:

- **Low Entry Point:** Secure your dream home with a modest **10% down payment**.
- **Flexible Payment Plan:** Spread out your payments over a convenient **2-year plan**.
- **Full Ownership:** Experience the freedom of **100% freehold ownership**.
- **Hassle-Free Investment:** Benefit from **zero interest and commission fees**.
- **Direct from the Developer:** Buy with confidence directly from the source.
- **Prime Location:** Enjoy easy access to Dubai, Sharjah, and Ras Al Khaimah.





# FLOOR PLANS

Studio:	Type A
1 Bedroom:	Type 1A:a , 1A:b , 1A:c Type 1B:a , 1B:b Type 1C:a , 1C:b
2 Bedroom:	Type 2A
3 Bedroom:	Penthouse





TYPE 1A:A

Unit	1 Bedroom
Floor	1
Internal Area	897.06 SQ FT
External Area	380.50 SQ FT
Total Area	1277.57 SQ FT



Disclaimer:  
1. All materials, finishes, dimensions and drawings are approximate.  
2. Information is subject to change without notice.  
3. Actual suite area may vary from the stated area.  
4. Drawings are not to scale.  
5. The Developer reserves the right to make revisions/alterations without any liability whatsoever

TYPE A

Unit	Studio
Floor	1-8
Internal Area	467.91 SQ FT
External Area	129.60 SQ FT
Total Area	597.50 SQ FT



Disclaimer:  
1. All materials, finishes, dimensions and drawings are approximate.  
2. Information is subject to change without notice.  
3. Actual suite area may vary from the stated area.  
4. Drawings are not to scale.  
5. The Developer reserves the right to make revisions/alterations without any liability whatsoever



TYPE 1A:B

Unit	1 Bedroom
Floor	3,5,7
Internal Area	897.06 SQ FT
External Area	302.36 SQ FT
Total Area	1199.42 SQ FT



Disclaimer:  
1. All materials, finishes, dimensions and drawings are approximate.  
2. Information is subject to change without notice.  
3. Actual suite area may vary from the stated area.  
4. Drawings are not to scale.  
5. The Developer reserves the right to make revisions/alterations without any liability whatsoever

TYPE 1A:C

Unit	1 Bedroom
Floor	2,4,6,8
Internal Area	897.06 SQ FT
External Area	144.67 SQ FT
Total Area	1041.73 SQ FT



Disclaimer:  
1. All materials, finishes, dimensions and drawings are approximate.  
2. Information is subject to change without notice.  
3. Actual suite area may vary from the stated area.  
4. Drawings are not to scale.  
5. The Developer reserves the right to make revisions/alterations without any liability whatsoever



TYPE 1B:B

Unit	1 Bedroom
Floor	2,4,6,8
Internal Area	869.19 SQ FT
External Area	153.17 SQ FT
Total Area	1022.36 SQ FT



Disclaimer:  
1. All materials, finishes, dimensions and drawings are approximate.  
2. Information is subject to change without notice.  
3. Actual suite area may vary from the stated area.  
4. Drawings are not to scale.  
5. The Developer reserves the right to make revisions/alterations without any liability whatsoever

TYPE 1B:A

Unit	1 Bedroom
Floor	1,3,5,7
Internal Area	869.19 SQ FT
External Area	154.46 SQ FT
Total Area	1023.65 SQ FT



Disclaimer:  
1. All materials, finishes, dimensions and drawings are approximate.  
2. Information is subject to change without notice.  
3. Actual suite area may vary from the stated area.  
4. Drawings are not to scale.  
5. The Developer reserves the right to make revisions/alterations without any liability whatsoever



TYPE 1C:A

Unit	1 Bedroom
Floor	13,5,7
Internal Area	863.05 SQ FT
External Area	129.60 SQ FT
Total Area	992.65 SQ FT



Disclaimer:  
1. All materials, finishes, dimensions and drawings are approximate.  
2. Information is subject to change without notice.  
3. Actual suite area may vary from the stated area.  
4. Drawings are not to scale.  
5. The Developer reserves the right to make revisions/alterations without any liability whatsoever

TYPE 1C:B

Unit	1 Bedroom
Floor	2,4,6,8
Internal Area	863.05 SQ FT
External Area	86.97 SQ FT
Total Area	950.02 SQ FT

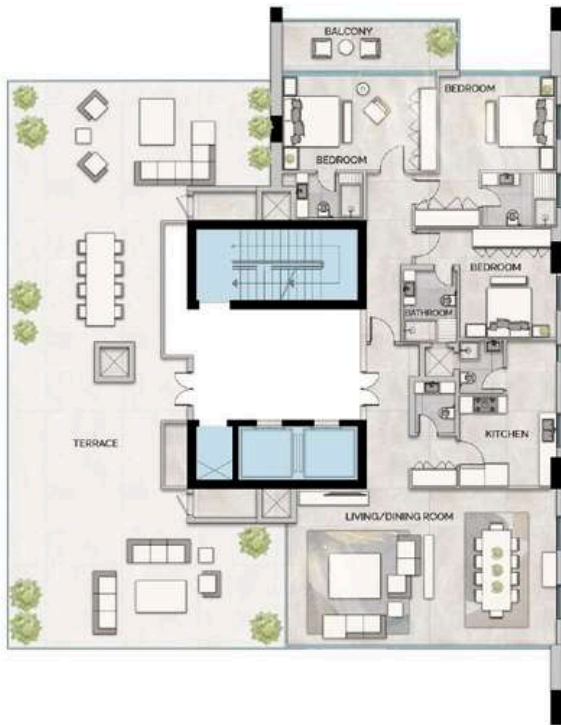


Disclaimer:  
1. All materials, finishes, dimensions and drawings are approximate.  
2. Information is subject to change without notice.  
3. Actual suite area may vary from the stated area.  
4. Drawings are not to scale.  
5. The Developer reserves the right to make revisions/alterations without any liability whatsoever



PENTHOUSE

Unit	3 Bedroom
Floor	9
Internal Area	1792.94 SQ FT
External Area	129.60 SQ FT
Total Area	1922.54 SQ FT



FLOOR: 9

Disclaimer:  
1. All materials, finishes, dimensions and drawings are approximate.  
2. Information is subject to change without notice.  
3. Actual suite area may vary from the stated area.  
4. Drawings are not to scale.  
5. The Developer reserves the right to make revisions/alterations without any liability whatsoever

TYPE 2A

Unit	2 Bedroom
Floor	Ground Floor
Internal Area	1443.87 SQ FT
External Area	690.94 SQ FT
Total Area	2134.81 SQ FT



GROUND FLOOR

Disclaimer:  
1. All materials, finishes, dimensions and drawings are approximate.  
2. Information is subject to change without notice.  
3. Actual suite area may vary from the stated area.  
4. Drawings are not to scale.  
5. The Developer reserves the right to make revisions/alterations without any liability whatsoever



## **PAYMENT PLANS**

**10%**

**DOWN  
PAYMENT**

**2**

**YEARS  
PLAN**

**100%**

**FREEHOLD**





**Where Prestige Meets Property**



At Majara Luxury Real Estate L.L.C., we redefine the art of luxury living. Based in the heart of the UAE, we specialize in curating exceptional real estate experiences tailored to the needs of discerning investors, end-users, and global clientele.



With a refined portfolio of premium properties across all seven Emirates, our expertise lies in both off-plan and ready-to-move assets, offering opportunities that blend architectural excellence with investment potential.



We are more than just property consultants & we are partners in your journey to finding the perfect home, investment, or lifestyle. Driven by integrity, market insight, and personalized service, Majara stands as a trusted name in an ever-evolving market.

## **Contact Us :**

**Phone: +971564452803**

**Email: [info@majararealestate.com](mailto:info@majararealestate.com)**

**<https://majararealestate.com/>**