



BAYSIDE

MARINA RESIDENCES

MAJARA LUXURY REAL ESTATE LLC

Head Office Level 36-01, Po Box :124382 , Trade Center 1, Sheikh Zayed Road , Burj Al Salam Tower Dubai UAE

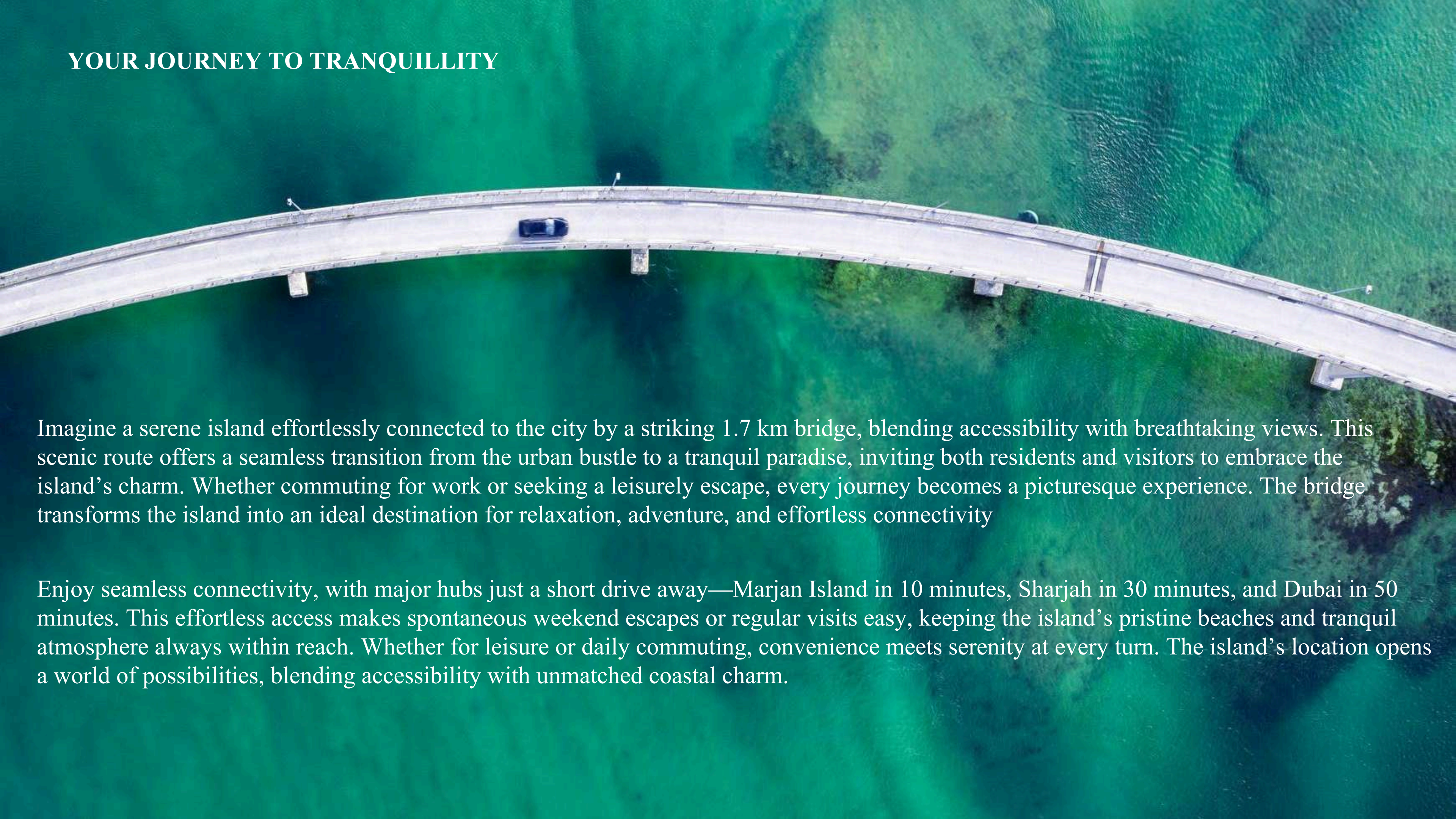
Majara presents Bayside Marina Residence on Siniya Island
An exclusive waterfront haven where elegance meets coastal tranquility.

Pure. Pristine. Perfect.

Siniya Island is a pristine paradise where nature flourishes in its purest form, a sanctuary of velvety white sands, swaying trees, and tranquil waves that compose a symphony of serenity. Embraced by untouched beauty and the gentle sea breeze, it offers a soulful escape where every sunset and shoreline whisper the timeless harmony of nature's perfection.



YOUR JOURNEY TO TRANQUILLITY

An aerial photograph of a long, curved concrete bridge spanning a body of vibrant turquoise water. A single dark-colored car is visible driving on the bridge. The bridge has several support pillars and a smooth, flowing curve. The water's surface is textured with gentle ripples.

Imagine a serene island effortlessly connected to the city by a striking 1.7 km bridge, blending accessibility with breathtaking views. This scenic route offers a seamless transition from the urban bustle to a tranquil paradise, inviting both residents and visitors to embrace the island's charm. Whether commuting for work or seeking a leisurely escape, every journey becomes a picturesque experience. The bridge transforms the island into an ideal destination for relaxation, adventure, and effortless connectivity

Enjoy seamless connectivity, with major hubs just a short drive away—Marjan Island in 10 minutes, Sharjah in 30 minutes, and Dubai in 50 minutes. This effortless access makes spontaneous weekend escapes or regular visits easy, keeping the island's pristine beaches and tranquil atmosphere always within reach. Whether for leisure or daily commuting, convenience meets serenity at every turn. The island's location opens a world of possibilities, blending accessibility with unmatched coastal charm.

Your Earthly Haven

Siniya Island is a luxurious sanctuary where nature and sophistication converge, offering serene mangroves, pristine beaches, and vibrant leisure experiences. From elegant residences and waterfront mansions to exclusive resorts, yacht clubs, and lush parks, it embodies a harmonious blend of tranquility, adventure, and refined living.



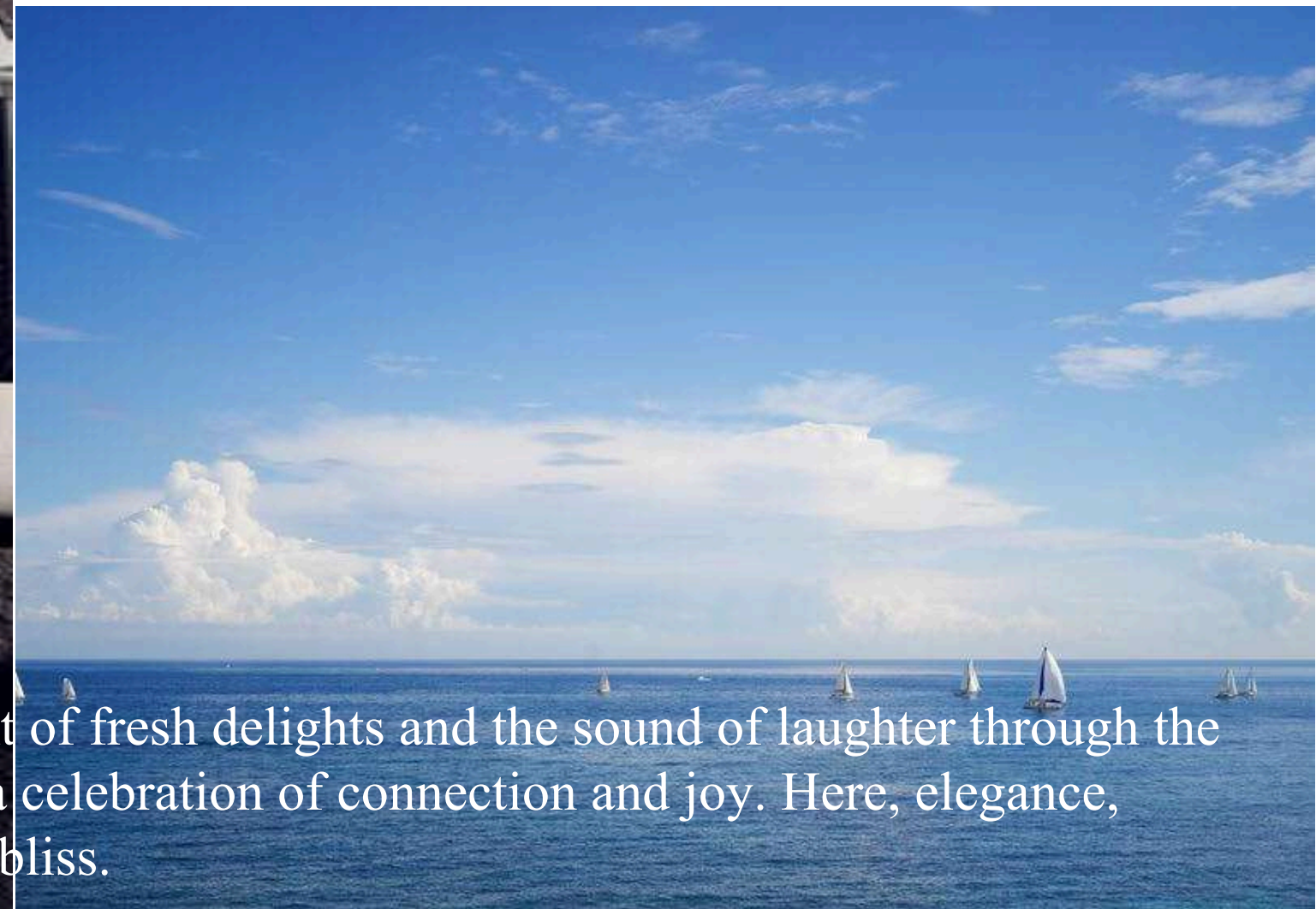
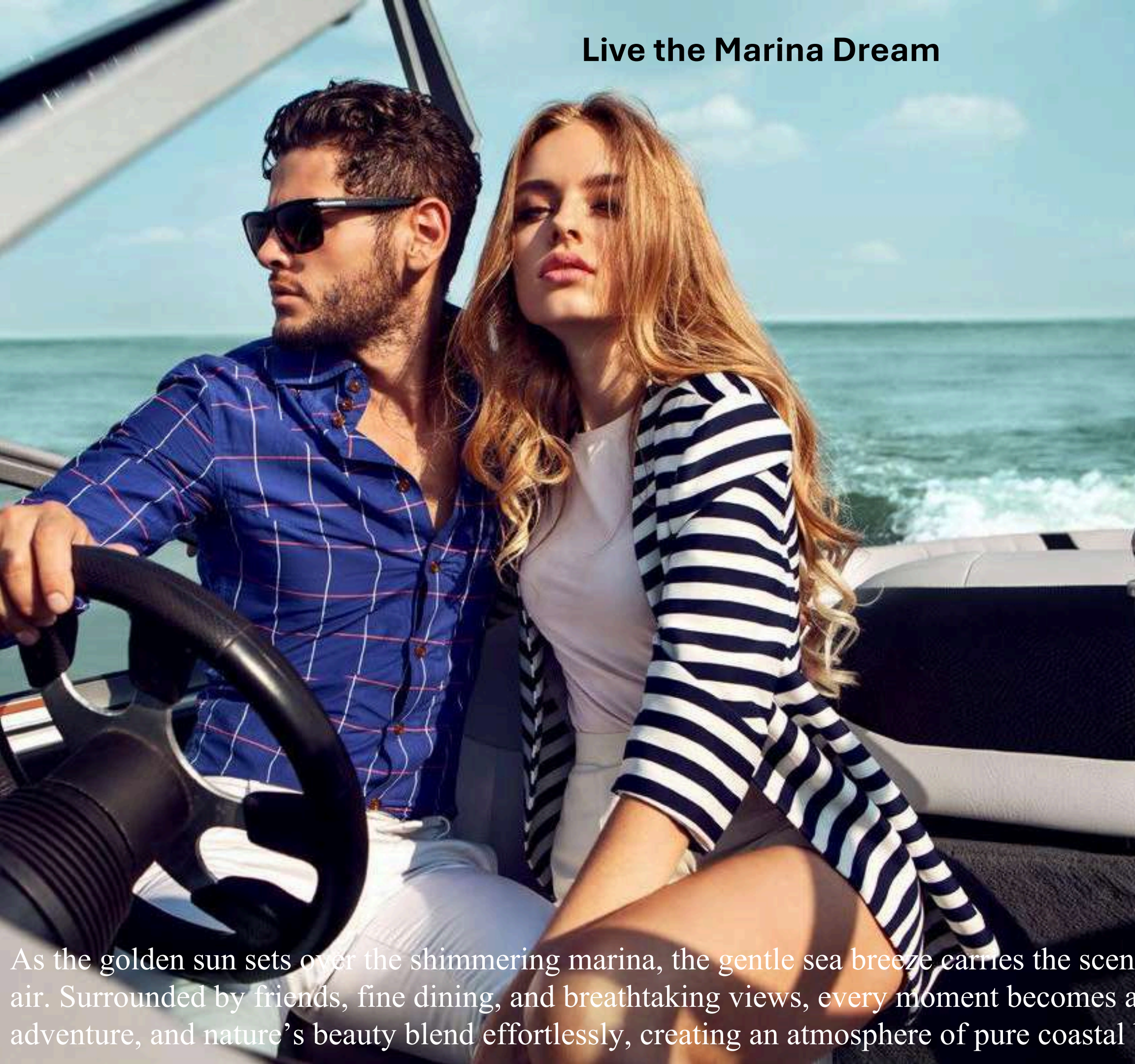


Unmatched Island Golfing | Luxury, Leisure, and Scenic Fairways

Experience the joy of island golfing, where friends come together on a pristine 18-hole course surrounded by crystal-clear waters and lush greenery. Each swing unfolds against a breathtaking backdrop, transforming every game into a celebration of connection and leisure. The immaculately designed fairways and serene surroundings invite both challenge and relaxation. Here, golf is not just a sport—it is a shared journey of luxury, friendship, and unforgettable moments.



Live the Marina Dream



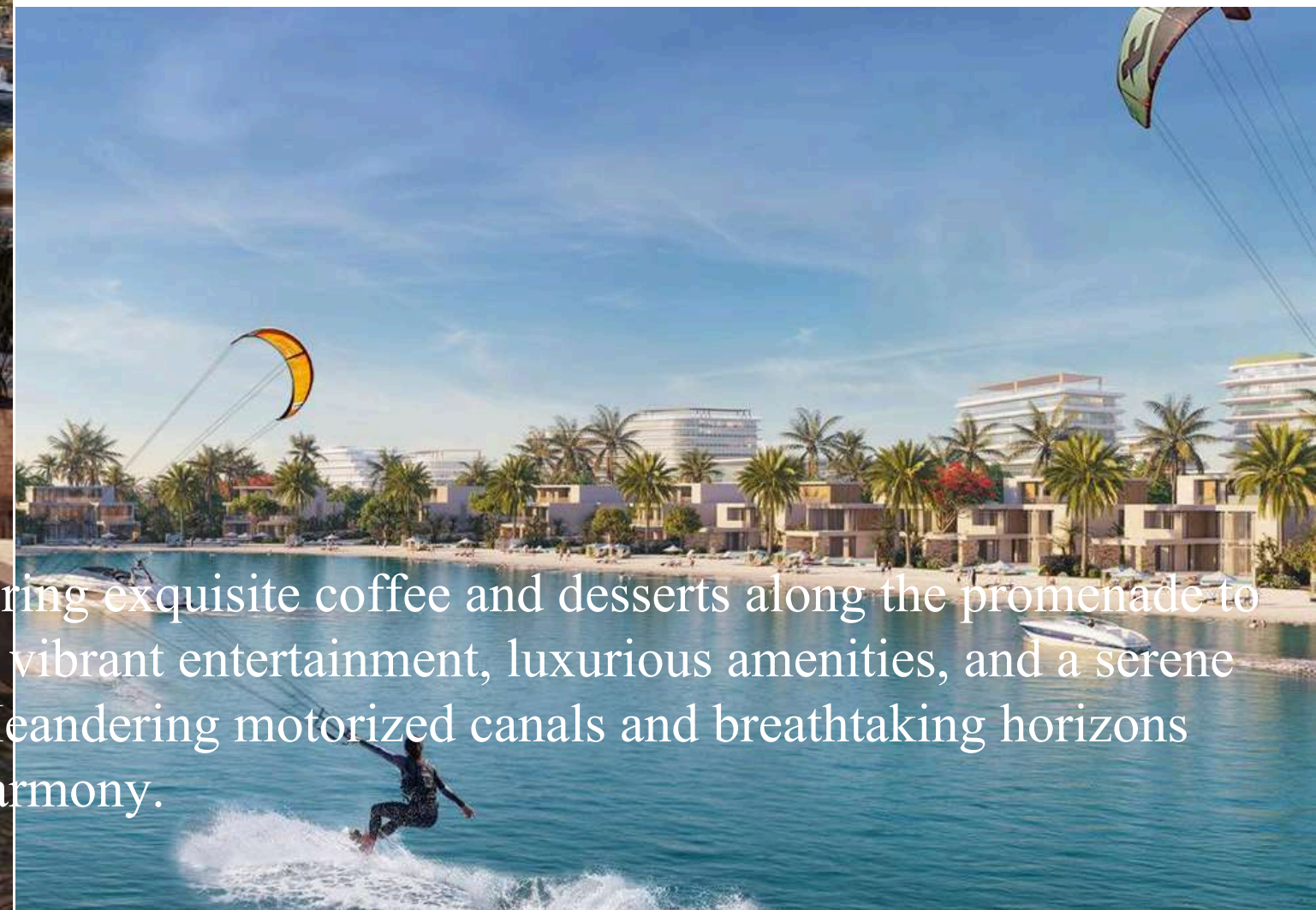
As the golden sun sets over the shimmering marina, the gentle sea breeze carries the scent of fresh delights and the sound of laughter through the air. Surrounded by friends, fine dining, and breathtaking views, every moment becomes a celebration of connection and joy. Here, elegance, adventure, and nature's beauty blend effortlessly, creating an atmosphere of pure coastal bliss.

Your Quintessential Life Along the Motorized Marina



Marina Residences on Siniya Island offers a sophisticated lifestyle where luxury, leisure, and maritime adventure converge, from elegant waterfront promenades to a prestigious yacht club and world-class dining. The motorized seawater channels weave gracefully through the community, providing both a visual spectacle and seamless access to the open sea. Here, every moment reflects refinement and freedom, making each day an immersive celebration of coastal elegance and extraordinary living.

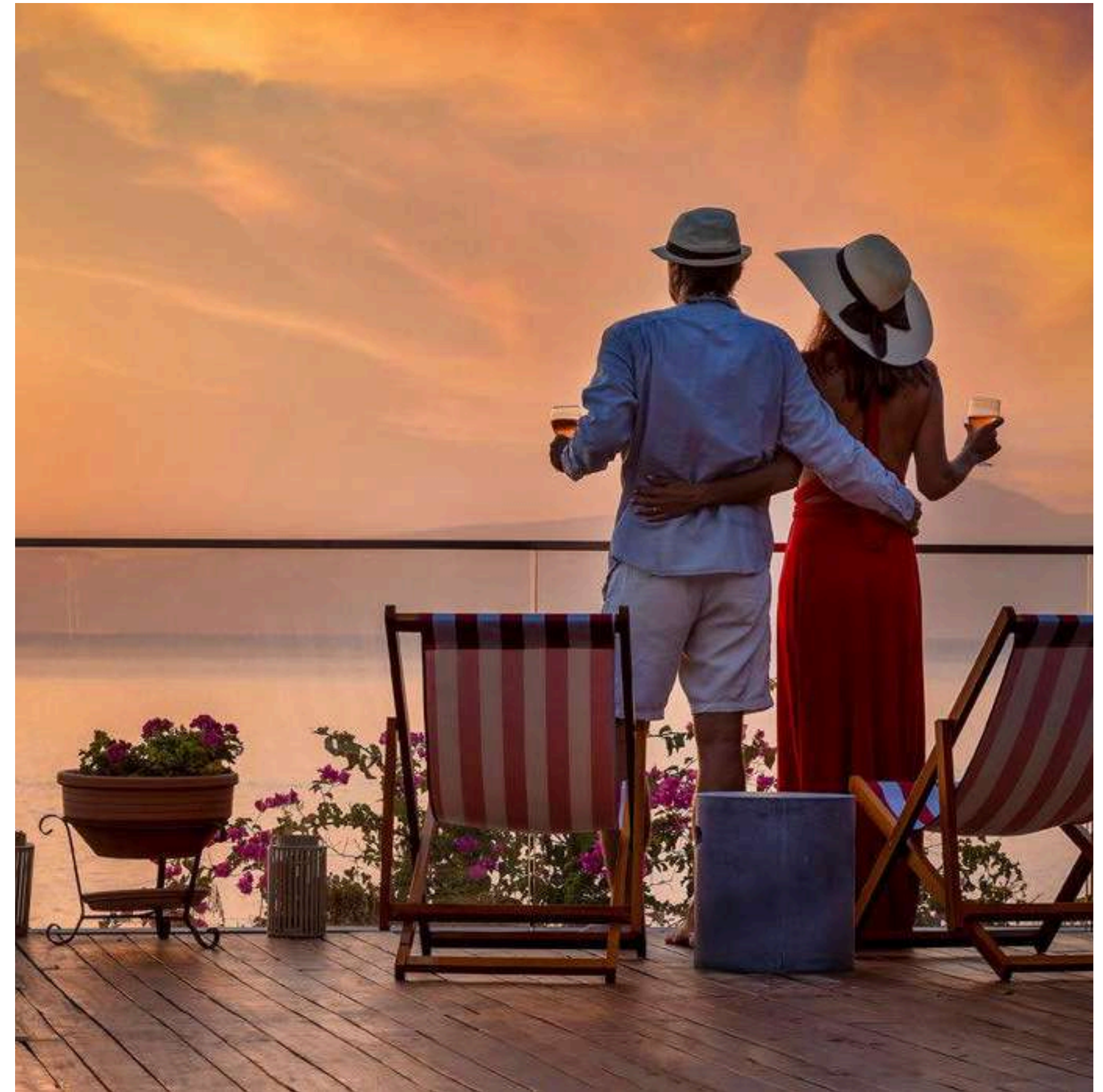
Refined Coastal Living with Private Moorings



At Marina Residences, every moment is a celebration of refined coastal living, from savoring exquisite coffee and desserts along the promenade to witnessing yachts glide across the glimmering waters. The community seamlessly blends vibrant entertainment, luxurious amenities, and a serene yacht club with advanced mooring, offering effortless access to the azure Arabian Sea. Meandering motorized canals and breathtaking horizons create a timeless backdrop where leisure, adventure, and sophistication unite in perfect harmony.

The Living Heart of Marina Splendor

Strolling along the Marina Residences promenade, every moment delights the senses, from the enticing aromas of gourmet cuisine to the shimmering waters alive with life and charm. By day or night, this vibrant waterfront destination offers an elegant tapestry of experiences, where laughter, music, and breathtaking views create unforgettable memories.



Nightlife & Retail Haven



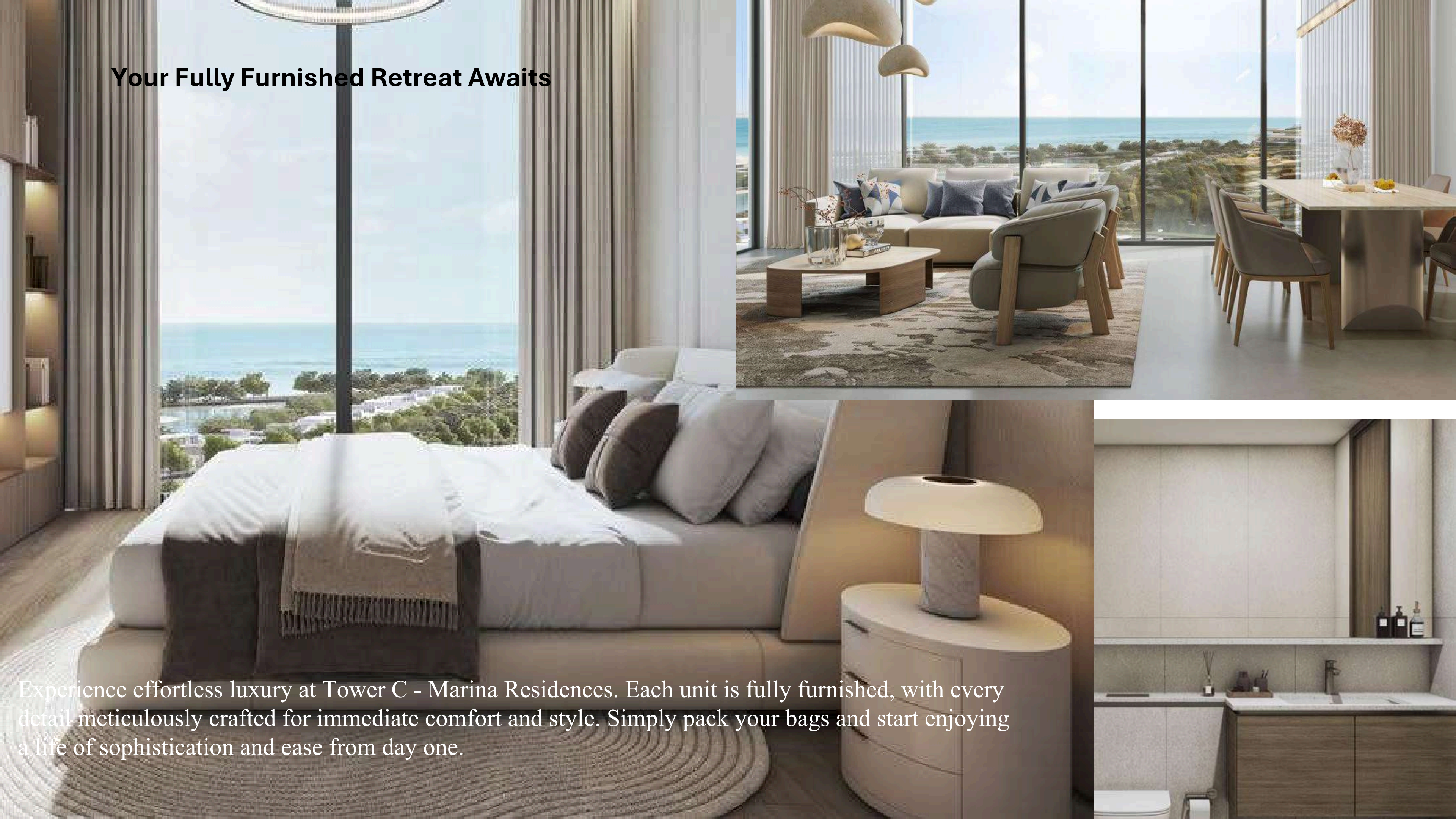
As night descends, Marina Residences at Siniya Island unveils a world of opulence, where the marina shimmers under a canopy of stars. Luxurious restaurants with panoramic views, vibrant lounges, and an elegant yacht club create an ambiance of refined indulgence. Every moment here — from exclusive fashion finds to gourmet delights — embodies the essence of sophisticated coastal living.

Amenity Deck and Tranquil Green Havens

At Marina Residences, every podium unveils a world where luxury and tranquility intertwine seamlessly. Bask in the serenity of infinity pools merging with the horizon, rejuvenate at marina-view fitness centers, or unwind amidst lush gardens and blooming pathways. Surrounded by the sea's gentle embrace, each moment becomes a timeless celebration of wellness, beauty, and coastal elegance.



Your Fully Furnished Retreat Awaits



Experience effortless luxury at Tower C - Marina Residences. Each unit is fully furnished, with every detail meticulously crafted for immediate comfort and style. Simply pack your bags and start enjoying a life of sophistication and ease from day one.

FLOOR AND UNIT PLANS

BAYSIDE

MARINA RESIDENCES

1 BED | TYPE A



1
BEDROOM
APARTMENT

TYPE A
(with powder room + balcony)

TOTAL SALEABLE AREA
SUITE RANGE = 465.11 - 466.18 SQ.FT.
BALCONY = 48.11 SQ.FT.
TOTAL RANGE = 513.22 - 514.30 SQ.FT.

List of unit numbers with this unit plan:

VIEWS

Park View
B-210, B-218

Amenity, Sea View
B-305

Amenity, Sea View, Park view
B-307, B-407, B-409, B-505, B-507, B-509, B-517,
B-607, B-609, B-611, B-619, B-705, B-707, B-709, B-717,
B-807, B-809, B-811, B-819, B-905, B-907, B-909, B-917

Park, Sea View
B-309, B-317, B-411, B-419

1 BED | TYPE A - VARIANT 1



1
BEDROOM
APARTMENT

TYPE A
VARIANT 1
(with powder room + balcony)

TOTAL SALEABLE AREA
SUITE RANGE = 465.11 - 466.29 SQ.FT.
BALCONY = 48.11 SQ.FT.
TOTAL RANGE = 513.22 - 514.41 SQ.FT.

List of unit numbers with this unit plan:

VIEWS

Park View
B-211, B-219

Park, Sea View
B-308, B-316, B-410, B-418

Amenity, Sea View, Park view
B-318, B-508, B-516, B-518, B-520, B-610, B-618, B-620,
B-622, B-708, B-716, B-718, B-720, B-810, B-818, B-820,
B-822, B-908, B-916, B-918, B-920

Amenity, Sea View
B-320, B-420, B-422



1
BEDROOM
APARTMENT

TYPE B

(with powder room + balcony)

TOTAL SALEABLE AREA
SUITE RANGE = 463.06 - 465.11 SQ. FT.
BALCONY RANGE = 80.84 - 81.91 SQ. FT.
TOTAL RANGE = 544.44 - 546.59 SQ. FT.

List of unit numbers with this unit plan:

VIEWS

Green View
A-101, C-104, A-206, C-208

Park View
B-101, B-213

Green, Sea View
A-306, C-306, A-406, C-408, A-506, C-506, A-606,
C-608, A-706, C-706

Park, Sea View
B-311, B-413, B-511, B-613, B-711, B-813, B-911



1
BEDROOM
APARTMENT

TYPE B VARIANT 1

(with powder room + balcony)

TOTAL SALEABLE AREA
SUITE RANGE = 463.60 - 465.11 SQ. FT.
BALCONY RANGE = 80.84 - 81.59 SQ. FT.
TOTAL RANGE = 544.87 - 546.38 SQ. FT.

List of unit numbers with this unit plan:

VIEWS

Green View
A-207, C-209

Park View
B-214, B-216

Green, Sea View
A-307, C-307, A-407, C-409, A-507, C-507, A-607,
C-609, A-707, C-707

Park, Sea View
B-312, B-314, B-414, B-416, B-512, B-514, B-614, B-616,
B-712, B-714, B-814, B-816, B-912, B-914



1
BEDROOM
APARTMENT

TYPE C
(with powder room + balcony)

TOTAL SALEABLE AREA
SUITE RANGE = 465.22 - 465.32 SQ.FT.
BALCONY = 80.51 SQ.FT.
TOTAL RANGE = 545.73 - 545.84 SQ.FT.

List of unit numbers with this unit plan:

VIEWS

Park View
C-212

Park, Sea View
C-310, C-412, C-510, C-612, C-710



1
BEDROOM
APARTMENT

TYPE C
VARIANT 1
(with powder room + balcony)

TOTAL SALEABLE AREA
SUITE RANGE = 465.22 - 465.32 SQ.FT.
BALCONY = 80.51 SQ.FT.
TOTAL RANGE = 545.73 - 545.84 SQ.FT.

List of unit numbers with this unit plan:

VIEWS

Park View
A-203

Park, Sea View
A-303, A-403, A-503, A-603, A-703



1
BEDROOM
APARTMENT

TYPE D

(with powder room + yard)

TOTAL SALEABLE AREA
SUITE RANGE = 498.91 - 501.17 SQ.FT.
YARD RANGE = 114.74 - 114.96 SQ.FT.
TOTAL RANGE = 613.65 - 616.13 SQ.FT.

List of unit numbers with this unit plan:

VIEWS

Green View
C-02

Amenity
A-201, C-201

Amenity, Pool View
B-201

1
BEDROOM
APARTMENT

TYPE D VARIANT 1

(with powder room + yard)

TOTAL SALEABLE AREA
SUITE RANGE = 498.80 - 501.06 SQ.FT.
YARD RANGE = 114.74 - 115.07 SQ.FT.
TOTAL RANGE = 613.54 - 616.13 SQ.FT.

List of unit numbers with this unit plan:

VIEWS

Green View
A-03

Amenity
A-214, C-214

Amenity, Pool View
B-228



1
BEDROOM
APARTMENT

TYPE E
(with powder room + yard)

TOTAL SALEABLE AREA
SUITE RANGE = 510.64 - 513.87 SQ.FT.
YARD RANGE = 114.74 - 115.07 SQ.FT.
TOTAL RANGE = 625.71 - 628.72 SQ.FT.

List of unit numbers with this unit plan:

VIEWS

- | | |
|-----------------------------|-----------------------------|
| Green View
A-01, C-03 | Amenity, Pool View
B-202 |
| Amenity
B-222 | |
| Amenity, Park View
B-220 | |



1
BEDROOM
APARTMENT

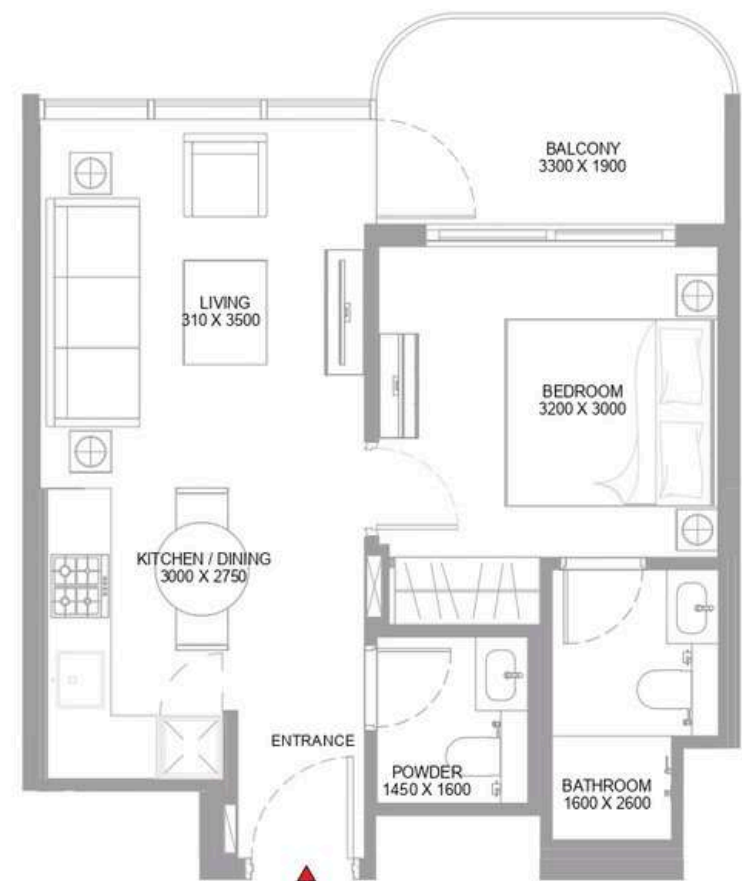
TYPE E
VARIANT 1
(with powder room + yard)

TOTAL SALEABLE AREA
SUITE RANGE = 510.64 - 513.87 SQ.FT.
YARD RANGE = 114.74 - 115.07 SQ.FT.
TOTAL RANGE = 625.71 - 628.72 SQ.FT.

List of unit numbers with this unit plan:

VIEWS

- | | |
|-----------------------------|------------------|
| Green View
A-02, C-04 | Amenity
B-207 |
| Amenity, Pool View
B-227 | |
| Amenity, Park View
B-209 | |



1
BEDROOM
APARTMENT

TYPE F

(with powder room + balcony)

TOTAL SALEABLE AREA
SUITE RANGE = 463.17 - 465.75 SQ.FT.
BALCONY RANGE = 82.24 - 82.77 SQ.FT.
TOTAL RANGE = 545.41 - 547.99 SQ.FT.

List of unit numbers with this unit plan:

VIEWS

Park View
C-211

Amenity, Pool View
B-302

Park, Sea View
C-309, C-411, C-509, C-611, C-709

Amenity, Pool, Marina View
B-402, B-431, B-502, B-527, B-602, B-631, B-702,
B-727, B-802, B-831, B-902, B-927



1
BEDROOM
APARTMENT

TYPE F
VARIANT 1

(with powder room + balcony)

TOTAL SALEABLE AREA
SUITE RANGE = 463.17 - 465.75 SQ.FT.
BALCONY = 82.24 SQ.FT.
TOTAL RANGE = 545.41 - 547.99 SQ.FT.

List of unit numbers with this unit plan:

VIEWS

Park View
A-204

Park, Sea View
A-304, A-404, A-504, A-604, A-704

Amenity, Pool, Marina View
B-323, B-427, B-523, B-627, B-723, B-827, B-923



2
BEDROOM
APARTMENT

TYPE A
(with balcony)

TOTAL SALEABLE AREA
SUITE RANGE = 627.32 - 630.98 SQ.FT.
BALCONY RANGE = 77.18 - 77.61 SQ.FT.
TOTAL RANGE = 704.50 - 708.59 SQ.FT.

List of unit numbers with this unit plan:

VIEWS

Amenity
A-301, A-401

Amenity, Pool View
B-301

Amenity, Pool, Marina View
B-325, B-401, B-429, B-501, B-525, B-601, B-629,
B-701, B-725, B-801, B-829, B-901, B-925

Amenity, Marina View
C-301, C-401, A-501, C-501, A-601, C-601, A-701, C-701



2
BEDROOM
APARTMENT

TYPE A
VARIANT 1
(with balcony)

TOTAL SALEABLE AREA
SUITE RANGE = 628.29 - 640.78 SQ.FT.
BALCONY RANGE = 77.18 - 77.61 SQ.FT.
TOTAL RANGE = 705.47 - 718.38 SQ.FT.

List of unit numbers with this unit plan:

VIEWS

Amenity
A-312, A-414

Amenity, Pool, Marina View
B-324, B-326, B-428, B-432, B-524, B-528, B-628,
B-632, B-724, B-728, B-828, B-832, B-924, B-928

Amenity, Marina View
C-312, C-414, A-512, C-512, A-614, C-614, A-712, C-712



2
BEDROOM
APARTMENT

TYPE B
(with balcony)

TOTAL SALEABLE AREA
SUITE RANGE = 603.75 - 605.25 SQ.FT.
BALCONY RANGE = 80.94 - 81.91 SQ.FT.
TOTAL RANGE = 685.12 - 686.85 SQ.FT.

List of unit numbers with this unit plan:

VIEWS

Green View
A-103, C-102, A-208, C-206

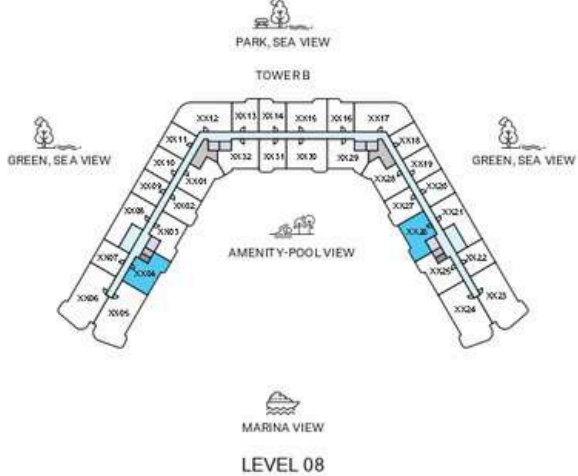
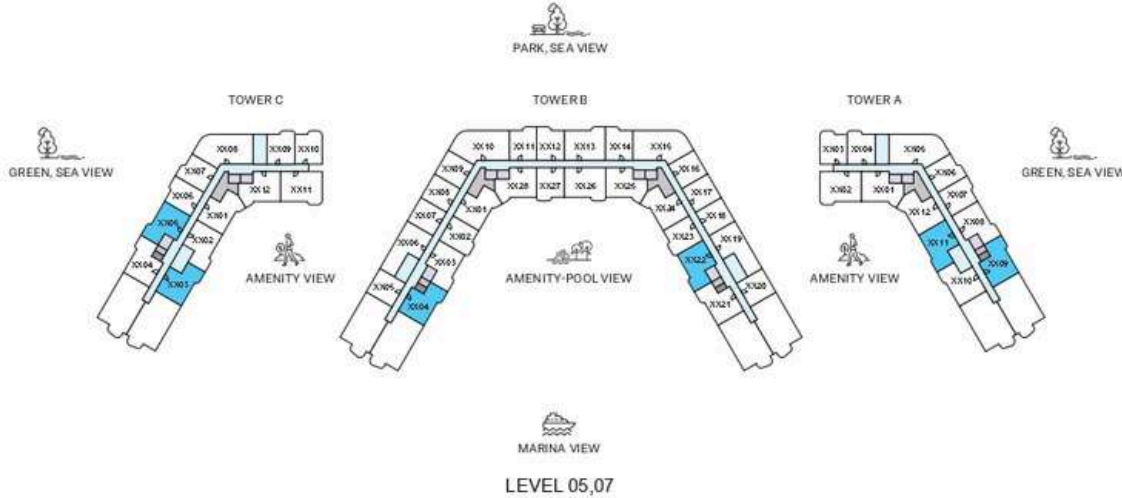
Green, Sea View
A-308, C-304, A-408, C-406, A-508, C-504, A-608,
C-608, A-708, C-704

Amenity, Marina View
A-310, C-302, A-412, C-402, A-510, C-502, A-612,
C-602, A-710, C-702

Amenity, Pool View
B-303

Amenity, Pool, Marina View
B-321, B-403, B-425, B-503, B-521, B-603, B-625, B-703,
B-721, B-803, B-825, B-903, B-921

UNIT



2
BEDROOM
APARTMENT

TYPE B
VARIANT 1
(with balcony)

TOTAL SALEABLE AREA
SUITE RANGE = 603.75 - 605.25 SQ.FT.
BALCONY RANGE = 80.84 - 81.91 SQ.FT.
TOTAL RANGE = 684.91 - 686.63 SQ.FT.

List of unit numbers with this unit plan:

VIEWS

Green View
A-104, C-103, A-209, C-207

Green, Sea View
A-309, C-305, A-409, C-407, A-509, C-505, A-609,
C-607, A-709, C-705

Amenity, Marina View
A-311, C-303, A-413, C-403, A-511, C-503, A-613,
C-603, A-711, C-703

Amenity, Pool View
B-304

Amenity, Pool, Marina View
B-322, B-404, B-426, B-504, B-522, B-604, B-626,
B-704, B-722, B-804, B-826, B-904, B-922

2 BED | TYPE C



2 BED | TYPE B - VARIANT 1



2
BEDROOM
APARTMENT

TYPE C
(with balcony)

TOTAL SALEABLE AREA
SUITE = 727.96 SQ.FT.
BALCONY = 80.41 SQ.FT.
TOTAL = 808.37 SQ.FT.

List of unit numbers with this unit plan:
VIEWS
Amenity, Marina View
C-311, C-413, C-511, C-613, C-711

2
BEDROOM
APARTMENT

TYPE B
VARIANT 1
(with balcony)

TOTAL SALEABLE AREA
SUITE RANGE = 603.75 - 605.25 SQ.FT.
BALCONY RANGE = 80.84 - 81.91 SQ.FT.
TOTAL RANGE = 684.91 - 686.63 SQ.FT.

List of unit numbers with this unit plan:
VIEWS
Green View
A-104, C-103, A-209, C-207

Green, Sea View
A-309, C-305, A-409, C-407, A-509, C-505, A-609,
C-607, A-709, C-705

Amenity, Marina View
A-311, C-303, A-413, C-403, A-511, C-503, A-613,
C-603, A-711, C-703

Amenity, Pool View
B-304

Amenity, Pool, Marina View
B-322, B-404, B-426, B-504, B-522, B-604, B-626,
B-704, B-722, B-804, B-826, B-904, B-922



2
BEDROOM
APARTMENT

TYPE C
VARIANT 1
(with balcony)

TOTAL SALEABLE AREA
SUITE = 727.96 SQ.FT.
BALCONY = 80.41 SQ.FT.
TOTAL = 808.37 SQ.FT.

List of unit numbers with this unit plan:

VIEWS

Amenity
A-302, A-402

Amenity, Marina View
A502.A602.A702



2
BEDROOM
APARTMENT

TYPE D
(with balcony)

TOTAL SALEABLE AREA
SUITE = 727.96 SQ.FT.
BALCONY RANGE = 80.84 - 81.81 SQ.FT.
TOTAL RANGE = 808.80 - 809.77 SQ.FT.

List of unit numbers with this unit plan:

VIEWS

Park View
B-103, B-215

Park, Sea View
B-313, B-415, B-513, B-615, B-713, B-815, B-913



2
BEDROOM
APARTMENT

TYPE E
(with yard)

TOTAL SALEABLE AREA
SUITE RANGE = 651.22 - 652.83 SQ.FT.
YARD RANGE = 172.87 - 173.19 SQ.FT.
TOTAL RANGE = 824.41 - 825.81 SQ.FT.

List of unit numbers with this unit plan:

VIEWS

Amenity
A-213, C-203
Amenity, Pool View
B-204, B-226



2
BEDROOM
APARTMENT

TYPE E
VARIANT 1
(with yard)

TOTAL SALEABLE AREA
SUITE RANGE = 651.22 - 652.83 SQ.FT.
BALCONY RANGE = 172.87 - 173.19 SQ.FT.
TOTAL RANGE = 824.41 - 825.81 SQ.FT.

List of unit numbers with this unit plan:

VIEWS

Amenity
A-212, C-202
Amenity, Pool View
B-203, B-225



2
BEDROOM
APARTMENT

TYPE F
(with balcony)

TOTAL SALEABLE AREA
SUITE = 796.53 SQ.FT.
BALCONY = 44.02 SQ.FT.
TOTAL = 840.55 SQ.FT.

List of unit numbers with this unit plan:
VIEWS
Amenity, Sea View
B-306
Amenity, Sea View, Park view
B-408, B-506, B-608, B-706, B-808, B-906

2
BEDROOM
APARTMENT

TYPE F
VARIANT 1
(with balcony)

TOTAL SALEABLE AREA
SUITE = 796.53 SQ.FT.
BALCONY = 44.02 SQ.FT.
TOTAL = 840.55 SQ.FT.

List of unit numbers with this unit plan:
VIEWS
Amenity, Sea View
B-318, B-421
Amenity, Sea View, Park view
B-519, B-621, B-719, B-821, B-919



2
BEDROOM
APARTMENT

TYPE G
(with yard)

TOTAL SALEABLE AREA
SUITE = 775.54 SQ.FT.
YARD = 172.76 SQ.FT.
TOTAL = 948.30 SQ.FT.

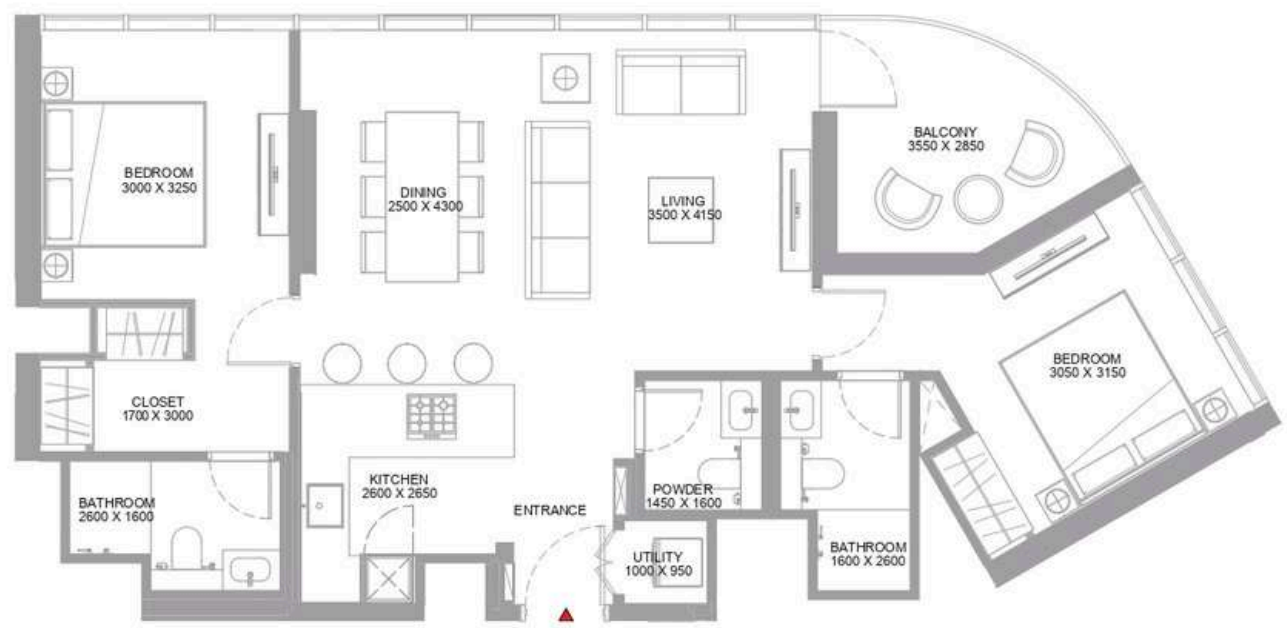
List of unit numbers with this unit plan:
VIEWS
Amenity
C-213

2
BEDROOM
APARTMENT

TYPE G
VARIANT 1
(with yard)

TOTAL SALEABLE AREA
SUITE = 775.43 SQ.FT.
BALCONY = 172.98 SQ.FT.
TOTAL = 948.41 SQ.FT.

List of unit numbers with this unit plan:
VIEWS
Amenity
A-202



2

BEDROOM
APARTMENT

TYPE H
VARIANT 1

(with powder room + balcony)

TOTAL SALEABLE AREA

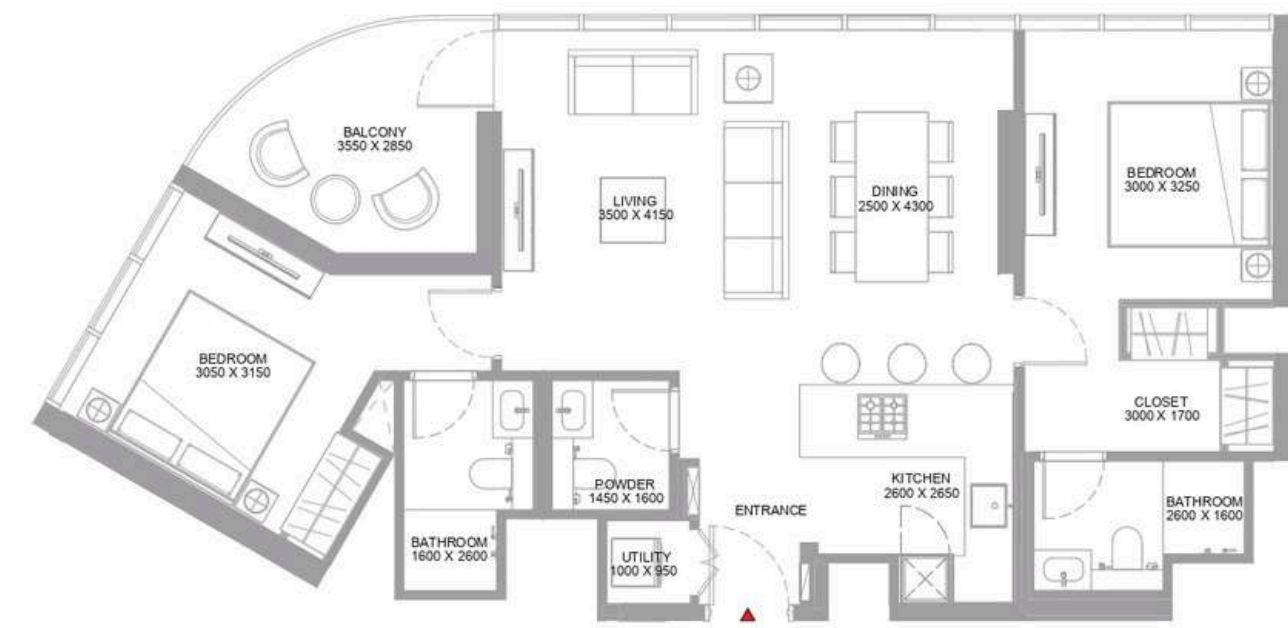
SUITE RANGE = 925.05 - 925.27 SQ.FT.
BALCONY RANGE = 96.01 - 96.34 SQ.FT.
TOTAL RANGE = 1,021.28 - 1,021.39 SQ.FT.

List of unit numbers with this unit plan:

VIEWS

Park View
A-205, B-217

Park, Sea View
A-305, B-315, A-405, B-417, A-505, B-515,
A-605, B-617, A-705, B-715, B-817, B-915



2

BEDROOM
APARTMENT

TYPE H

(with powder room + balcony)

TOTAL SALEABLE AREA

SUITE RANGE = 925.05 - 925.16 SQ.FT.
BALCONY = 96.34 SQ.FT.
TOTAL RANGE = 1,021.39 - 1,021.50 SQ.FT.

List of unit numbers with this unit plan:

VIEWS

Park View
B-212, C-210

Park, Sea View
B-310, C-308, B-412, C-410, B-510, C-508, B-612,
C-610, B-710, C-708, B-812, B-910



2
BEDROOM
APARTMENT

TYPE I
(with yard)

TOTAL SALEABLE AREA
SUITE = 839.91 SQ.FT.
YARD = 230.99 SQ.FT.
TOTAL = 1,070.90 SQ.FT.

List of unit numbers with this unit plan:

VIEWS
Amenity
B-208



2
BEDROOM
APARTMENT

TYPE I
VARIANT 1
(with yard)

TOTAL SALEABLE AREA
SUITE = 839.91 SQ.FT.
BALCONY = 230.99 SQ.FT.
TOTAL = 1,070.90 SQ.FT.

List of unit numbers with this unit plan:

VIEWS
Amenity
B-221



2
BEDROOM
APARTMENT

TYPE J

(with powder room + balcony)

TOTAL SALEABLE AREA
SUITE RANGE = 845.40 - 846.80 SQ.FT.
BALCONY RANGE = 200.53 - 239.60 SQ.FT.
TOTAL RANGE = 1,045.93 - 1,086.40 SQ.FT.

List of unit numbers with this unit plan:

VIEWS

Green, Marina View
D-101
Marina View
D-01, D-111



2
BEDROOM
APARTMENT

TYPE J
VARIANT 1

(with powder room + balcony)

TOTAL SALEABLE AREA
SUITE RANGE = 845.40 - 846.90 SQ.FT.
BALCONY RANGE = 196.76 - 243.37 SQ.FT.
TOTAL RANGE = 1,042.16 - 1,090.28 SQ.FT.

List of unit numbers with this unit plan:

VIEWS

Marina View
D-02, D-102, D-112



2
BEDROOM
APARTMENT

TYPE K
(with powder room + balcony)

TOTAL SALEABLE AREA
SUITE RANGE = 845.40 - 858.42 SQ.FT.
BALCONY RANGE = 210.11 - 227.33 SQ.FT.
TOTAL RANGE = 1,060.35 - 1,077.04 SQ.FT.

List of unit numbers with this unit plan:
VIEWS
Marina View
D-05, D-07, D-09, D-103, D-115, D-117, D-119



2
BEDROOM
APARTMENT

TYPE K
VARIANT 1
(with powder room + balcony)

TOTAL SALEABLE AREA
SUITE RANGE = 842.92 - 854.01 SQ.FT.
BALCONY RANGE = 188.69 - 225.72 SQ.FT.
TOTAL RANGE = 1,042.70 - 1,078.44 SQ.FT.

List of unit numbers with this unit plan:
VIEWS
Marina View
D-04, D-06, D-08, D-104, D-114, D-116, D-118
Green, Marina View
D-10, D-120



2
BEDROOM
APARTMENT

TYPE L
(with powder room + terrace)

TOTAL SALEABLE AREA
SUITE = 845.40 SQ.FT.
TERRACE = 269.74 SQ.FT.
TOTAL = 1,115.14 SQ.FT.

List of unit numbers with this unit plan:
VIEWS
Marina View
D-105



2
BEDROOM
APARTMENT

TYPE L
VARIANT 1
(with powder room + terrace)

TOTAL SALEABLE AREA
SUITE = 845.40 SQ.FT.
TERRACE = 269.74 SQ.FT.
TOTAL = 1,115.14 SQ.FT.

List of unit numbers with this unit plan:
VIEWS
Marina View
D-110



2
BEDROOM
APARTMENT

TYPE M
(with powder room + terrace)

TOTAL SALEABLE AREA
SUITE = 845.40 SQ.FT.
BALCONY = 234.55 SQ.FT.
TOTAL = 1,079.94 SQ.FT.

List of unit numbers with this unit plan:
VIEWS
Marina View
D-106

2
BEDROOM
APARTMENT

TYPE M
VARIANT 1
(with powder room + terrace)

TOTAL SALEABLE AREA
SUITE = 845.40 SQ.FT.
TERRACE = 234.55 SQ.FT.
TOTAL = 1,079.94 SQ.FT.

List of unit numbers with this unit plan:
VIEWS
Marina View
D-109



2
BEDROOM
APARTMENT

TYPE N
(with balcony)

TOTAL SALEABLE AREA
SUITE = 727.64 SQ.FT.
BALCONY = 82.56 SQ.FT.
TOTAL = 810.20 SQ.FT.

List of unit numbers with this unit plan:
VIEWS
Amenity, Pool, Marina View
B-430, B-526, B-630, B-726, B-830, B-926



3
BEDROOM
APARTMENT

TYPE A
(with maid room and powder room + terrace)

TOTAL SALEABLE AREA
SUITE = 1,424.39 SQ.FT.
TERRACE = 364.25 SQ.FT.
TOTAL = 1,788.64 SQ.FT.

List of unit numbers with this unit plan:
VIEWS
Marina View
D-107

3 BED | TYPE A - VARIANT 1



3
BEDROOM
APARTMENT

TYPE A
VARIANT 1
(with maid room and powder room + terrace)

TOTAL SALEABLE AREA
SUITE = 1,424.39 SQ.FT.
TERRACE = 364.25 SQ.FT.
TOTAL = 1,788.64 SQ.FT.

List of unit numbers with this unit plan:

VIEWS

Marina View
D-108

3 BED | TYPE B



3
BEDROOM
APARTMENT

TYPE B
(with maid room and powder room + balcony)

TOTAL SALEABLE AREA
SUITE = 1,436.44SQ.FT.
BALCONY RANGE = 309.89 - 364.36 SQ.FT.
TOTAL RANGE = 1,746.34 - 1,800.80 SQ.FT.

List of unit numbers with this unit plan:

VIEWS

Marina View
D-03, D-113



3
BEDROOM
(DUPLEX)
APARTMENT

TYPE C
(with maid room and powder room + balcony)

TOTAL SALEABLE AREA
SUITE RANGE = 1,843.43 - 1,847.19 SQ.FT.
BALCONY = 311.18 SQ.FT.
TOTAL RANGE = 2,154.61 - 2,158.38 SQ.FT.

- List of unit numbers with this unit plan:
- VIEWS**
- Amenity
A-211, B-206, B-224, C-205
- Amenity, Marina View
A-411, B-406, B-424, A-611, B-606, B-624, B-806, B-824
- Green, Marina View
C-405, C-605



3
BEDROOM
(DUPLEX)
APARTMENT

TYPE C
VARIANT 1
(with maid room and powder room + balcony)

TOTAL SALEABLE AREA
SUITE RANGE = 1,843.00 - 1,846.66 SQ.FT.
BALCONY = 311.18 SQ.FT.
TOTAL RANGE = 2,154.18 - 2,157.84 SQ.FT.

- List of unit numbers with this unit plan:
- VIEWS**
- Amenity, Green
A-210
- Amenity, Marina View
B-405, B-423, C-404, B-605, B-623, C-604, B-805, B-823
- Amenity
B-205, B-223, C-204
- Green, Marina View
A-410, A-610



3
BEDROOM
APARTMENT

TYPE D
(with balcony)

TOTAL SALEABLE AREA
SUITE RANGE = 1,195.76 - 1,200.50 SQ.FT.
BALCONY = 95.91 SQ.FT.
TOTAL RANGE = 1,291.67 - 1,296.41 SQ.FT.

List of unit numbers with this unit plan:
VIEWS
Green View
C-01, C-101



3
BEDROOM
APARTMENT

TYPE D
VARIANT 1
(with balcony)

TOTAL SALEABLE AREA
SUITE RANGE = 1,197.48 - 1,202.22 SQ.FT.
BALCONY = 95.91 SQ.FT.
TOTAL RANGE = 1,293.39 - 1,298.13 SQ.FT.

List of unit numbers with this unit plan:
VIEWS
Green View
A-04, A-105



Where Prestige Meets Property



At Majara Luxury Real Estate L.L.C., we redefine the art of luxury living. Based in the heart of the UAE, we specialize in curating exceptional real estate experiences tailored to the needs of discerning investors, end-users, and global clientele.



With a refined portfolio of premium properties across all seven Emirates, our expertise lies in both off-plan and ready-to-move assets, offering opportunities that blend architectural excellence with investment potential.



We are more than just property consultants & we are partners in your journey to finding the perfect home, investment, or lifestyle. Driven by integrity, market insight, and personalized service, Majara stands as a trusted name in an ever-evolving market.

Contact Us :

Phone: +971564452803

Email: info@majararealestate.com

<https://majararealestate.com/>