



BARAJEEL

TOWERS



حي دار العمارية
PROPERTIES



A NEW ICON GRACING AJMAN'S SKYLINE

Ajman, where heritage meets ambition, welcomes a new landmark: Barajeel Towers. Developed by GJ Properties, this iconic residence celebrates the city's rich history while boldly stepping into its promising future.

WHERE HERITAGE MEETS AMBITION

Strategically positioned on the UAE's eastern coast, Ajman offers a compelling blend of natural beauty and modern convenience.

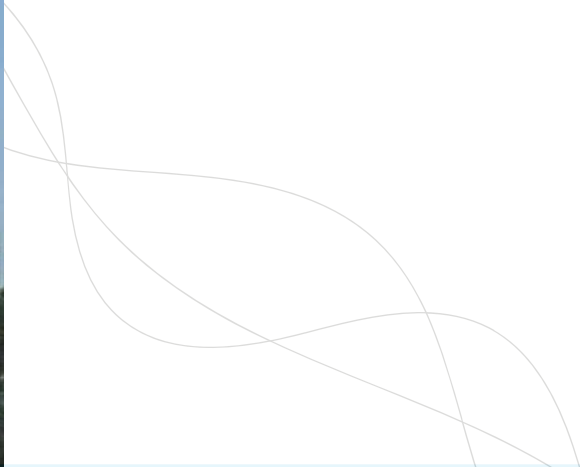
Its proximity to Dubai fuels significant growth, making it a prime investment hub, while its pristine beaches and cultural richness ensure a vibrant, serene lifestyle.





A TOWERING LEGACY

Discover an exceptional living experience in the heart of Ajman. Barajeel Towers offers modern apartments with stunning city and creek views, embodying luxury, exquisite finishes, and a coveted location.



WHY INVEST IN AJMAN

Ajman's appeal lies in its status as a Top 5 Safest City, strategic connectivity to all 7 Emirates, investor-friendly policies, Golden Visa eligibility, and diverse property options. Ongoing development and affordability make it a compelling investment.

- Prime Location
- Future Rail Access
- Affordable Entry
- Strong ROI
- Low Utility Costs
- Residency Benefits
- Ajman Free Zone
- Proximity to Education
- Access to Key Attractions





AJMAN DOWNTOWN

Ajman Downtown is one of the Emirate's most desirable neighbourhood, celebrated for its vibrant energy and prime location. Just moments away from Ajman's city centre, it offers effortless access to shopping malls, schools, hospitals, and beaches, ensuring a convenient and connected lifestyle.

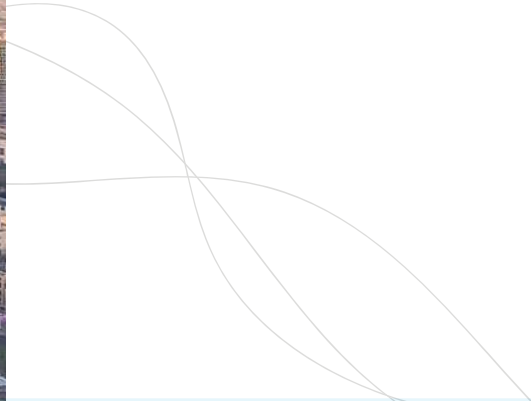
Whether you're a young professional or a growing family, Ajman Downtown—and Barajeel Towers in particular—offer the perfect blend of modern living and accessibility.





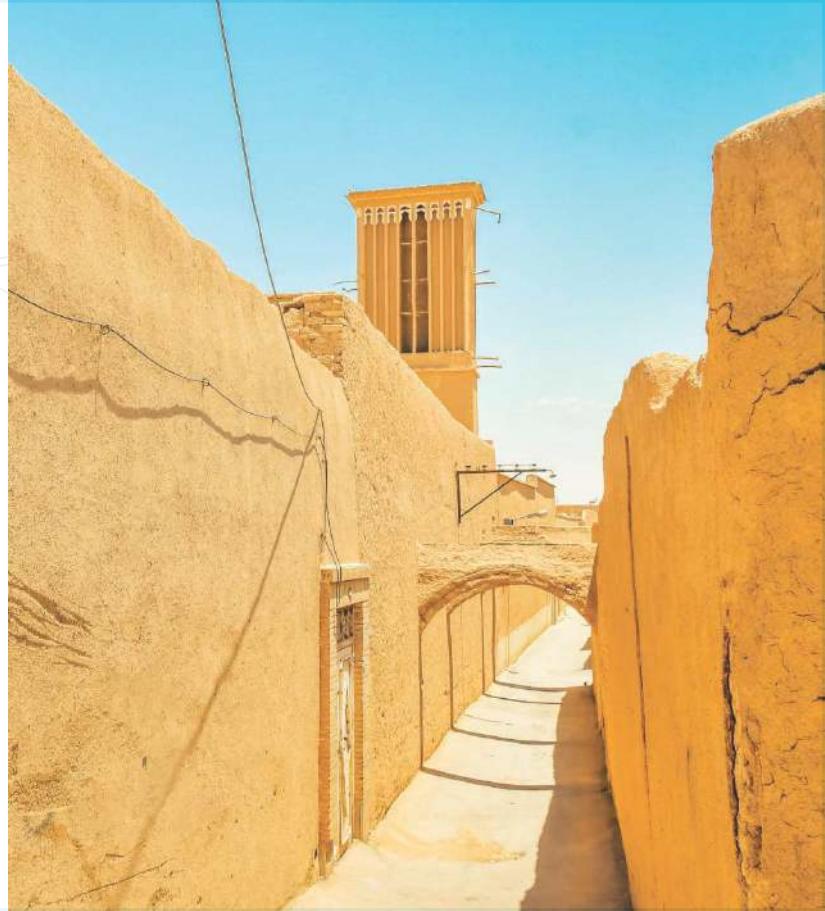
A NEW ICON GRACING AJMAN'S SKYLINE

Barajeel Towers, with its 540 units, marks a significant addition to Ajman's skyline. Developed by GJ Properties, it honors the city's past while embracing its future.



INSPIRED BY THE SOUL OF BARAJEEL

Drawing inspiration from the traditional wind towers, Barajeel Towers blends heritage with modern design. The architecture reflects the ingenuity and harmonious spirit of these iconic structures.







A SANCTUARY OF COMFORT AND STYLE

Barajeel Towers offers meticulously crafted residences with spacious layouts, high-quality finishes, and abundant natural light. The sophisticated design extends from the welcoming lobby to the elegant private havens.

Exclusive 1- and 2-bedroom residences feature private balconies, built-in wardrobes, and high ceilings. Interiors offer spacious living areas, comfortable bedrooms, and modern, well-appointed bathrooms.







AMENITIES THAT ELEVATE

Barajeel Towers extends beyond individual residences, offering amenities designed to elevate everyday living.

ON-SITE

- State-of-the-art health club
- Resort-style swimming pool
- Landscaped gardens
- Children's play area
- 24/7 security
- Covered parking
- High-speed elevators
- Retail spaces

NEARBY

- Markets and Shopping Centers
- Schools and Universities
- Parks
- Recreation Centers
- Restaurants
- Walking Areas
- Sitting Areas



BARAJEEL TOWERS: FACTS & FEATURES

- Project Name: Barajeel Towers
- Project Type: Luxury Residences
- Total Units: 540
- Unit Types: 1 & 2 Bedroom Apartments
- Location: Ajman
- Completion: Q4, 2027
- Payment Plan: 40/60 4 Years Post Handover



IN THE HEART OF AJMAN

Nestled in Ajman's heart, Barajeel Towers offers residents unparalleled connectivity and convenience. The prime location provides easy access to the city's key landmarks, ensuring a seamless and fulfilling lifestyle.



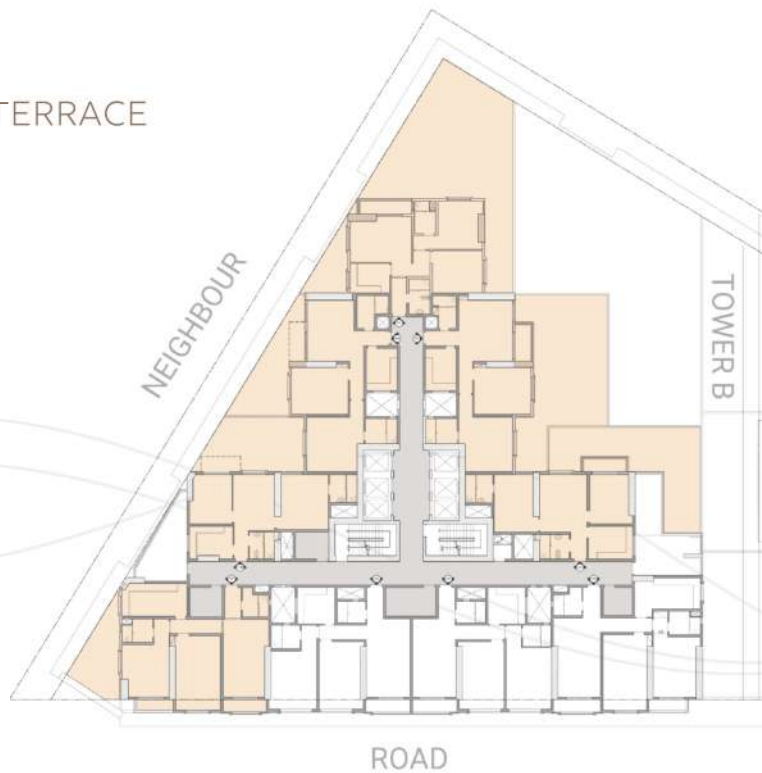
NEARBY LANDMARKS:

- 1 Barajeel Towers**
- 2 Ajman City Centre:** 10 minutes
- 3 Ajman Beach:** 10 minutes
- 4 Ajman Academy:** 10 minutes
- 5 Amina Hospital:** 10 minutes
- 6 Al Hamediya Park:** 14 minutes
- 7 Ajman University:** 15 minutes
- 8 International School of Choueifat:** 15 minutes
- 9 Al Hamriyah Beach:** 15 minutes
- 10 Safer Mall:** 15 minutes
- 11 Sharjah International Airport:** 20 minutes
- 12 Downtown Dubai:** 15–20 minutes
- 13 Dubai International Airport (DXB):** 30 minutes



TOWER A

FIRST FLOOR WITH TERRACE





BARAJEEL TOWERS

UNIT 101

2 Bedroom – Level 1

Total Area: 4068.03 SQ.FT

412.25 SQM.



DISCLAIMER:

All measurements are indicative and are for marketing purposes only. All efforts have been made to ensure their accuracy, however these layouts are subject to change at the discretion of the developer and should not be relied upon as final. The actual area may vary from the stated area and the developer reserves the right to make therevisions/alterations, at its absolute discretion, without any liability whatsoever.





BARAJEEL TOWERS

UNIT 102

2 Bedroom – Level 1

**Total Area: 3268.02 SQ.FT
303.61 SQM.**



DISCLAIMER:

All measurements are indicative and are for marketing purposes only. All efforts have been made to ensure their accuracy, however these layouts are subject to change at the discretion of the developer and should not be relied upon as final. The actual area may vary from the stated area and the developer reserves the right to make revisions/alterations, at its absolute discretion, without any liability whatsoever.





BARAJEEL TOWERS

UNIT 103

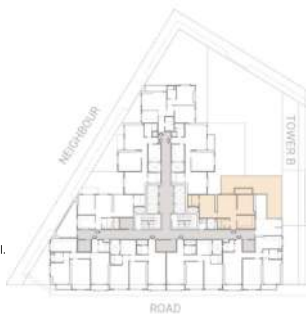
2 Bedroom – Level 1

**Total Area: 2493.80 SQ.FT
231.68 SQM.**



DISCLAIMER:

All measurements are indicative and are for marketing purposes only. All efforts have been made to ensure their accuracy, however these layouts are subject to change at the discretion of the developer and should not be relied upon as final. The actual area may vary from the stated area and the developer reserves the right to make the revisions/alterations, at its absolute discretion, without any liability whatsoever.



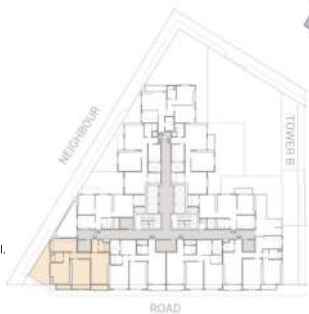


BARAJEEL TOWERS

UNIT 107

2 Bedroom – Level 1

**Total Area: 2739.36 SQ.FT
254.50 SQM.**



DISCLAIMER:

All measurements are indicative and are for marketing purposes only. All efforts have been made to ensure their accuracy, however these layouts are subject to change at the discretion of the developer and should not be relied upon as final. The actual area may vary from the stated area and the developer reserves the right to make the revisions/alterations, at its absolute discretion, without any liability whatsoever.



BARAJEEL TOWERS

UNIT 108

2 Bedroom – Level 1

**Total Area: 2119.12 SQ.FT
196.87 SQM.**



DISCLAIMER:

All measurements are indicative and are for marketing purposes only. All efforts have been made to ensure their accuracy, however these layouts are subject to change at the discretion of the developer and should not be relied upon as final. The actual area may vary from the stated area and the developer reserves the right to make revisions/alterations, at its absolute discretion, without any liability whatsoever.



BARAJEEL TOWERS

UNIT 108

2 Bedroom – Level 1

**Total Area: 2739.36 SQ.FT
254.50 SQM.**



DISCLAIMER:

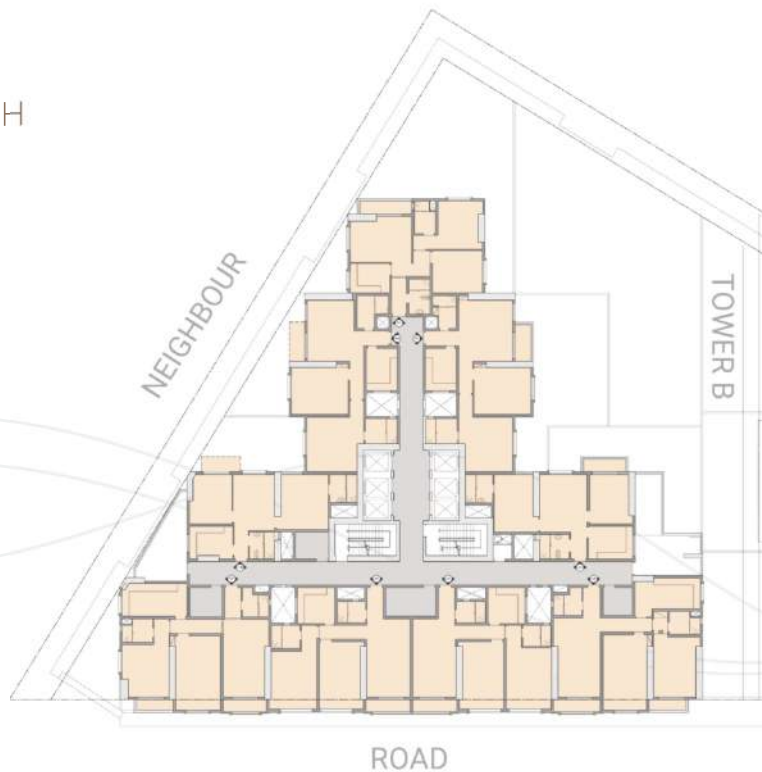
All measurements are indicative and are for marketing purposes only. All efforts have been made to ensure their accuracy, however these layouts are subject to change at the discretion of the developer and should not be relied upon as final. The actual area may vary from the stated area and the developer reserves the right to make therevisions/alterations, at its absolute discretion, without any liability whatsoever.





TOWER A

TYPICAL FLOOR WITH
CLOSED KITCHEN



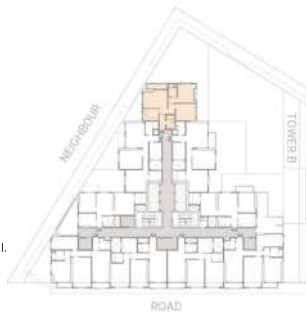


BARAJEEL TOWERS

UNIT 01

2 Bedroom – Level Typical

**Total Area: 1658.70 SQ.FT
154.10 SQM.**



DISCLAIMER:

All measurements are indicative and are for marketing purposes only. All efforts have been made to ensure their accuracy, however these layouts are subject to change at the discretion of the developer and should not be relied upon as final. The actual area may vary from the stated area and the developer reserves the right to make the revisions/alterations, at its absolute discretion, without any liability whatsoever.



BARAJEEL TOWERS

UNIT 02

2 Bedroom – Level Typical

Total Area: 1846.87 SQ.FT

171.58 SQM.



DISCLAIMER:

All measurements are indicative and are for marketing purposes only. All efforts have been made to ensure their accuracy, however these layouts are subject to change at the discretion of the developer and should not be relied upon as final. The actual area may vary from the stated area and the developer reserves the right to make revisions/alterations, at its absolute discretion, without any liability whatsoever.





BARAJEEL TOWERS

UNIT 03

2 Bedroom – Level Typical

Total Area: 1484.70 SQ.FT

137.93 SQM.



DISCLAIMER:

All measurements are indicative and are for marketing purposes only. All efforts have been made to ensure their accuracy, however these layouts are subject to change at the discretion of the developer and should not be relied upon as final. The actual area may vary from the stated area and the developer reserves the right to make the revisions/alterations, at its absolute discretion, without any liability whatsoever.



BARAJEEL TOWERS

UNIT 04

2 Bedroom – Level Typical

**Total Area: 2144.65 SQ.FT
199.24 SQM.**



DISCLAIMER:

All measurements are indicative and are for marketing purposes only. All efforts have been made to ensure their accuracy, however these layouts are subject to change at the discretion of the developer and should not be relied upon as final. The actual area may vary from the stated area and the developer reserves the right to make the revisions/alterations, at its absolute discretion, without any liability whatsoever.





BARAJEEL TOWERS

UNIT 05

2 Bedroom – Level Typical

**Total Area: 1860.38 SQ.FT
172.84 SQM.**



DISCLAIMER:

All measurements are indicative and are for marketing purposes only. All efforts have been made to ensure their accuracy, however these layouts are subject to change at the discretion of the developer and should not be relied upon as final. The actual area may vary from the stated area and the developer reserves the right to make revisions/alterations, at its absolute discretion, without any liability whatsoever.





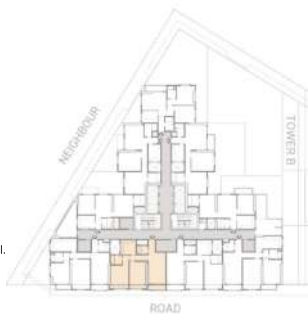
BARAJEEL TOWERS

UNIT 06

2 Bedroom – Level Typical

Total Area: 1863.72 SQ.FT

173.15 SQM.



DISCLAIMER:

All measurements are indicative and are for marketing purposes only. All efforts have been made to ensure their accuracy, however these layouts are subject to change at the discretion of the developer and should not be relied upon as final. The actual area may vary from the stated area and the developer reserves the right to make therevisions/alterations, at its absolute discretion, without any liability whatsoever.





BARAJEEL TOWERS

UNIT 07

2 Bedroom – Level Typical

**Total Area: 2094.43 SQ.FT
194.58 SQM.**



DISCLAIMER:

All measurements are indicative and are for marketing purposes only. All efforts have been made to ensure their accuracy, however these layouts are subject to change at the discretion of the developer and should not be relied upon as final. The actual area may vary from the stated area and the developer reserves the right to make the revisions/alterations, at its absolute discretion, without any liability whatsoever.





BARAJEEL TOWERS

UNIT 08

2 Bedroom – Level Typical

**Total Area: 1440.33 SQ.FT
133.81 SQM.**



DISCLAIMER:

All measurements are indicative and are for marketing purposes only. All efforts have been made to ensure their accuracy, however these layouts are subject to change at the discretion of the developer and should not be relied upon as final. The actual area may vary from the stated area and the developer reserves the right to make therevisions/alterations, at its absolute discretion, without any liability whatsoever.



BARAJEEL TOWERS

UNIT 09

2 Bedroom – Level Typical

**Total Area: 1839.03 SQ.FT
170.85 SQM.**



DISCLAIMER:

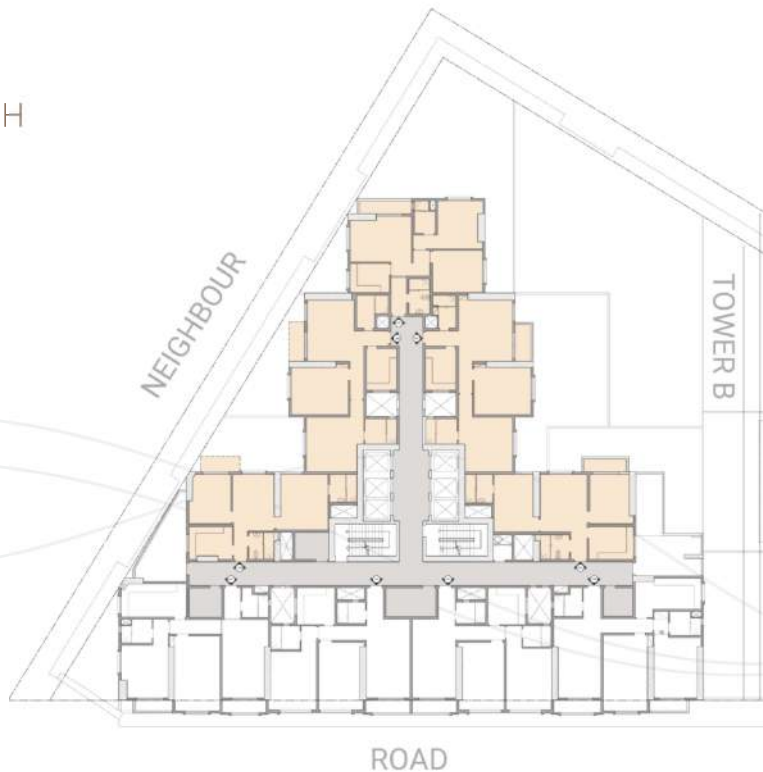
All measurements are indicative and are for marketing purposes only. All efforts have been made to ensure their accuracy, however these layouts are subject to change at the discretion of the developer and should not be relied upon as final. The actual area may vary from the stated area and the developer reserves the right to make the revisions/alterations, at its absolute discretion, without any liability whatsoever.





TOWER A

TYPICAL FLOOR WITH
OPENED KITCHEN



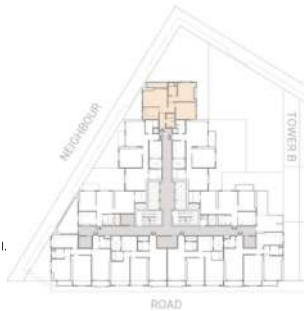


BARAJEEL TOWERS

UNIT 01

2 Bedroom – Level Typical

**Total Area: 1658.70 SQ.FT
154.10 SQM.**



DISCLAIMER:

All measurements are indicative and are for marketing purposes only. All efforts have been made to ensure their accuracy, however these layouts are subject to change at the discretion of the developer and should not be relied upon as final. The actual area may vary from the stated area and the developer reserves the right to make therevisions/alterations, at its absolute discretion, without any liability whatsoever.



BARAJEEL TOWERS

UNIT 02

2 Bedroom – Level Typical

Total Area: 1846.87 SQ.FT

171.58 SQM.



DISCLAIMER:

All measurements are indicative and are for marketing purposes only. All efforts have been made to ensure their accuracy, however these layouts are subject to change at the discretion of the developer and should not be relied upon as final. The actual area may vary from the stated area and the developer reserves the right to make the revisions/alterations, at its absolute discretion, without any liability whatsoever.





BARAJEEL TOWERS

UNIT 03

2 Bedroom – Level Typical

**Total Area: 1484.70 SQ.FT
137.93 SQM.**



DISCLAIMER:

All measurements are indicative and are for marketing purposes only. All efforts have been made to ensure their accuracy, however these layouts are subject to change at the discretion of the developer and should not be relied upon as final. The actual area may vary from the stated area and the developer reserves the right to make the revisions/alterations, at its absolute discretion, without any liability whatsoever.



BARAJEEL TOWERS

UNIT 08

2 Bedroom – Level Typical

**Total Area: 1440.33 SQ.FT
133.81 SQM.**



DISCLAIMER:

All measurements are indicative and are for marketing purposes only. All efforts have been made to ensure their accuracy, however these layouts are subject to change at the discretion of the developer and should not be relied upon as final. The actual area may vary from the stated area and the developer reserves the right to make therevisions/alterations, at its absolute discretion, without any liability whatsoever.



BARAJEEL TOWERS

UNIT 09

2 Bedroom – Level Typical

**Total Area: 1839.03 SQ.FT
170.85 SQM.**



DISCLAIMER:

All measurements are indicative and are for marketing purposes only. All efforts have been made to ensure their accuracy, however these layouts are subject to change at the discretion of the developer and should not be relied upon as final. The actual area may vary from the stated area and the developer reserves the right to make the revisions/alterations, at its absolute discretion, without any liability whatsoever.





TOWER B

FIRST FLOOR WITH TERRACE





BARAJEEL TOWERS

UNIT 101

2 Bedroom – Level 1

**Total Area: 3388.80 SQ.FT
314.83 SQM.**

B

DISCLAIMER:

All measurements are indicative and are for marketing purposes only. All efforts have been made to ensure their accuracy, however these layouts are subject to change at the discretion of the developer and should not be relied upon as final. The actual area may vary from the stated area and the developer reserves the right to make the revisions/alterations, at its absolute discretion, without any liability whatsoever.





BARAJEEL TOWERS

UNIT 108

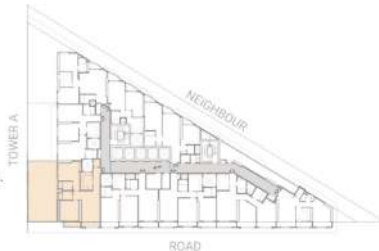
2 Bedroom – Level 1

**Total Area: 3148.24 SQ.FT
292.48 SQM.**

B

DISCLAIMER:

All measurements are indicative and are for marketing purposes only. All efforts have been made to ensure their accuracy, however these layouts are subject to change at the discretion of the developer and should not be relied upon as final. The actual area may vary from the stated area and the developer reserves the right to make therevisions/alterations, at its absolute discretion, without any liability whatsoever.





BARAJEEL TOWERS

UNIT 109

2 Bedroom – Level 1

**Total Area: 2699.66 SQ.FT
250.81 SQM.**

B



DISCLAIMER:

All measurements are indicative and are for marketing purposes only. All efforts have been made to ensure their accuracy, however these layouts are subject to change at the discretion of the developer and should not be relied upon as final. The actual area may vary from the stated area and the developer reserves the right to make the revisions/alterations, at its absolute discretion, without any liability whatsoever.



TOWER B

TYPICAL FLOOR WITH
CLOSED KITCHEN





BARAJEEL TOWERS

UNIT 01

2 Bedroom – Level Typical

**Total Area: 1590.47 SQ.FT
147.76 SQM.**

B



DISCLAIMER:

All measurements are indicative and are for marketing purposes only. All efforts have been made to ensure their accuracy, however these layouts are subject to change at the discretion of the developer and should not be relied upon as final. The actual area may vary from the stated area and the developer reserves the right to make the revisions/alterations, at its absolute discretion, without any liability whatsoever.



BARAJEEL TOWERS

UNIT 02

1 Bedroom – Level Typical

Total Area: 1088.17 SQ.FT

101.09 SQM.

B

DISCLAIMER:

All measurements are indicative and are for marketing purposes only. All efforts have been made to ensure their accuracy, however these layouts are subject to change at the discretion of the developer and should not be relied upon as final. The actual area may vary from the stated area and the developer reserves the right to make the revisions/alterations, at its absolute discretion, without any liability whatsoever.





BARAJEEL TOWERS

UNIT 03

1 Bedroom - Level Typical

Total Area: 1565.78 SQ.FT

145.47 SQM.

B



DISCLAIMER:

All measurements are indicative and are for marketing purposes only. All efforts have been made to ensure their accuracy, however these layouts are subject to change at the discretion of the developer and should not be relied upon as final. The actual area may vary from the stated area and the developer reserves the right to make therevisions/alterations, at its absolute discretion, without any liability whatsoever.



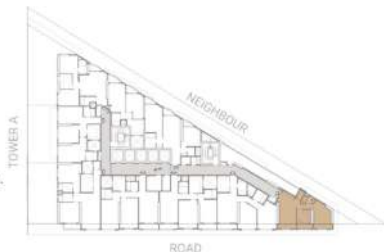


BARAJEEL TOWERS

UNIT 04

1 Bedroom – Level Typical

Total Area: 1281.35 SQ.FT
119.04 SQM.



DISCLAIMER:

All measurements are indicative and are for marketing purposes only. All efforts have been made to ensure their accuracy, however these layouts are subject to change at the discretion of the developer and should not be relied upon as final. The actual area may vary from the stated area and the developer reserves the right to make therevisions/alterations, at its absolute discretion, without any liability whatsoever.



BARAJEEL TOWERS

UNIT 05

2 Bedroom – Level Typical

Total Area: 1800.33 SQ.FT

167.26 SQM.

B



DISCLAIMER:

All measurements are indicative and are for marketing purposes only. All efforts have been made to ensure their accuracy, however these layouts are subject to change at the discretion of the developer and should not be relied upon as final. The actual area may vary from the stated area and the developer reserves the right to make therevisions/alterations, at its absolute discretion, without any liability whatsoever.



BARAJEEL TOWERS

UNIT 06

2 Bedroom – Level Typical

**Total Area: 1876.90 SQ.FT
174.37 SQM.**



DISCLAIMER:

All measurements are indicative and are for marketing purposes only. All efforts have been made to ensure their accuracy, however these layouts are subject to change at the discretion of the developer and should not be relied upon as final. The actual area may vary from the stated area and the developer reserves the right to make the revisions/alterations, at its absolute discretion, without any liability whatsoever.



BARAJEEL TOWERS

UNIT 07

2 Bedroom – Level Typical

**Total Area: 1910.10 SQ.FT
177.45 SQM.**



DISCLAIMER:

All measurements are indicative and are for marketing purposes only. All efforts have been made to ensure their accuracy, however these layouts are subject to change at the discretion of the developer and should not be relied upon as final. The actual area may vary from the stated area and the developer reserves the right to make therevisions/alterations, at its absolute discretion, without any liability whatsoever.



BARAJEEL TOWERS

UNIT 08

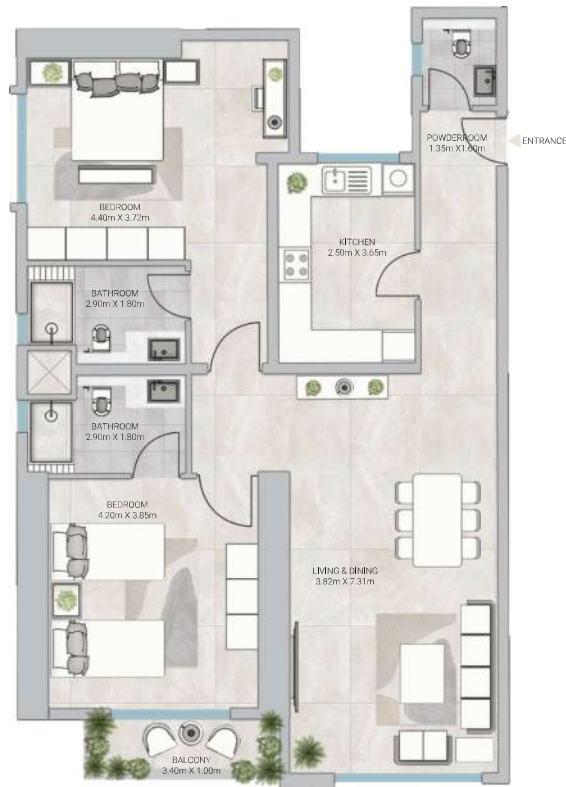
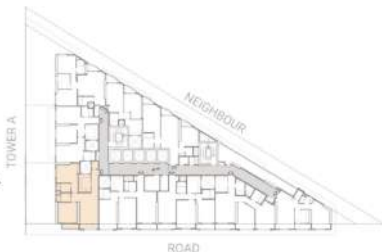
2 Bedroom – Level Typical

**Total Area: 1900.92 SQ.FT
176.60 SQM.**



DISCLAIMER:

All measurements are indicative and are for marketing purposes only. All efforts have been made to ensure their accuracy, however these layouts are subject to change at the discretion of the developer and should not be relied upon as final. The actual area may vary from the stated area and the developer reserves the right to make revisions/alterations, at its absolute discretion, without any liability whatsoever.





BARAJEEL TOWERS

UNIT 09

2 Bedroom – Level Typical

**Total Area: 1730.76 SQ.FT
160.79 SQM.**



DISCLAIMER:

All measurements are indicative and are for marketing purposes only. All efforts have been made to ensure their accuracy, however these layouts are subject to change at the discretion of the developer and should not be relied upon as final. The actual area may vary from the stated area and the developer reserves the right to make therevisions/alterations, at its absolute discretion, without any liability whatsoever.





TOWER B

TYPICAL FLOOR WITH
OPENED KITCHEN





BARAJEEL TOWERS

UNIT 01

2 Bedroom – Level Typical

**Total Area: 1590.47 SQ.FT
147.76 SQM.**

B

DISCLAIMER:

All measurements are indicative and are for marketing purposes only. All efforts have been made to ensure their accuracy, however these layouts are subject to change at the discretion of the developer and should not be relied upon as final. The actual area may vary from the stated area and the developer reserves the right to make therevisions/alterations, at its absolute discretion, without any liability whatsoever.





BARAJEEL TOWERS

UNIT 04

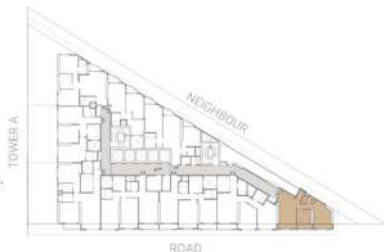
1 Bedroom – Level Typical

**Total Area: 1281.35 SQ.FT
119.04 SQM.**



DISCLAIMER:

All measurements are indicative and are for marketing purposes only. All efforts have been made to ensure their accuracy, however these layouts are subject to change at the discretion of the developer and should not be relied upon as final. The actual area may vary from the stated area and the developer reserves the right to make therevisions/alterations, at its absolute discretion, without any liability whatsoever.





BARAJEEL TOWERS

UNIT 08

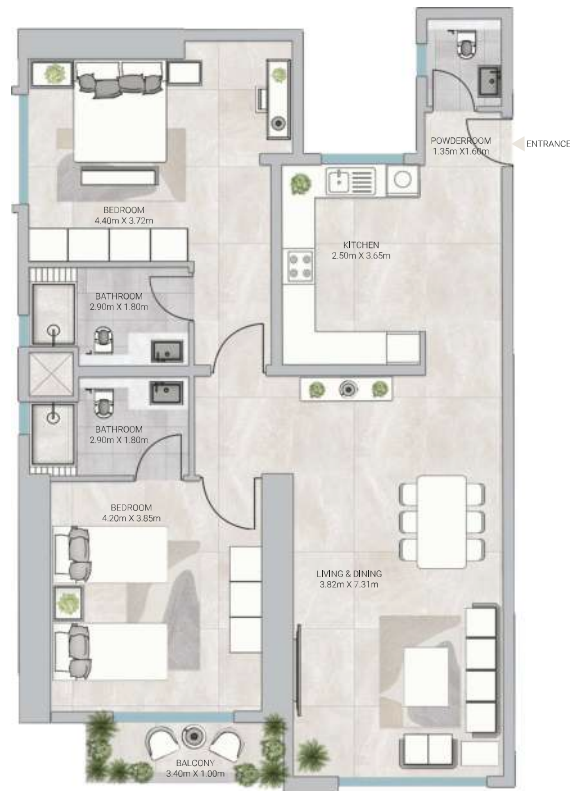
2 Bedroom – Level Typical

**Total Area: 1900.92 SQ.FT
176.60 SQM.**



DISCLAIMER:

All measurements are indicative and are for marketing purposes only. All efforts have been made to ensure their accuracy, however these layouts are subject to change at the discretion of the developer and should not be relied upon as final. The actual area may vary from the stated area and the developer reserves the right to make therevisions/alterations, at its absolute discretion, without any liability whatsoever.





BARAJEEL TOWERS

UNIT 09

2 Bedroom – Level Typical

**Total Area: 1730.76 SQ.FT
160.79 SQM.**

B

DISCLAIMER:

All measurements are indicative and are for marketing purposes only. All efforts have been made to ensure their accuracy, however these layouts are subject to change at the discretion of the developer and should not be relied upon as final. The actual area may vary from the stated area and the developer reserves the right to make therevisions/alterations, at its absolute discretion, without any liability whatsoever.



BUILDING A LEGACY

GJ Properties, the visionary developer behind Barajeel Towers, has a proven track record of delivering exceptional residential spaces that exceed expectations. With a commitment to excellence and innovation, GJ Properties adheres to the highest industry standards, ensuring that every development is crafted to exceed expectations.

The company's vision is to create exceptional spaces that enhance the lives of residents and contribute to the growth and prosperity of the region. GJ Properties prioritises customer satisfaction, transparency, and timely delivery, earning the trust of investors and homeowners alike.



جي جا العقارية
PROPERTIES





BE PART OF AJMAN'S EVOLVING
STORY. INVEST IN YOUR FUTURE
AT BARAJEEL TOWERS.

Head Office:
Ground Floor, Oasis Tower
Sheikh Rashid Bin Saeed Al Maktoum,
Street Ajman, UAE

Phone: +971 6 741 4478
Toll Free: 800 GJAJM (45256)
Email: info@gjproperties.ae



جي جا العقارية
PROPERTIES