

A close-up photograph of pink cherry blossoms on dark, thin branches. The flowers are in various stages of bloom, with some showing prominent stamens. The background is a soft, out-of-focus white, suggesting a bright sky or a light-colored wall. The overall mood is delicate and romantic.

BELGRAVIA GARDEN

[View Project](#)



MAJARA LUXURY REAL ESTATE LLC

Head Office Level 36-01, Po Box :124382 , Trade Center 1, Sheikh Zayed Road , Burj Al Salam Tower Dubai UAE

Belgravia Garden — Represented by Majara | Timeless Residences in the Heart of Dubailand

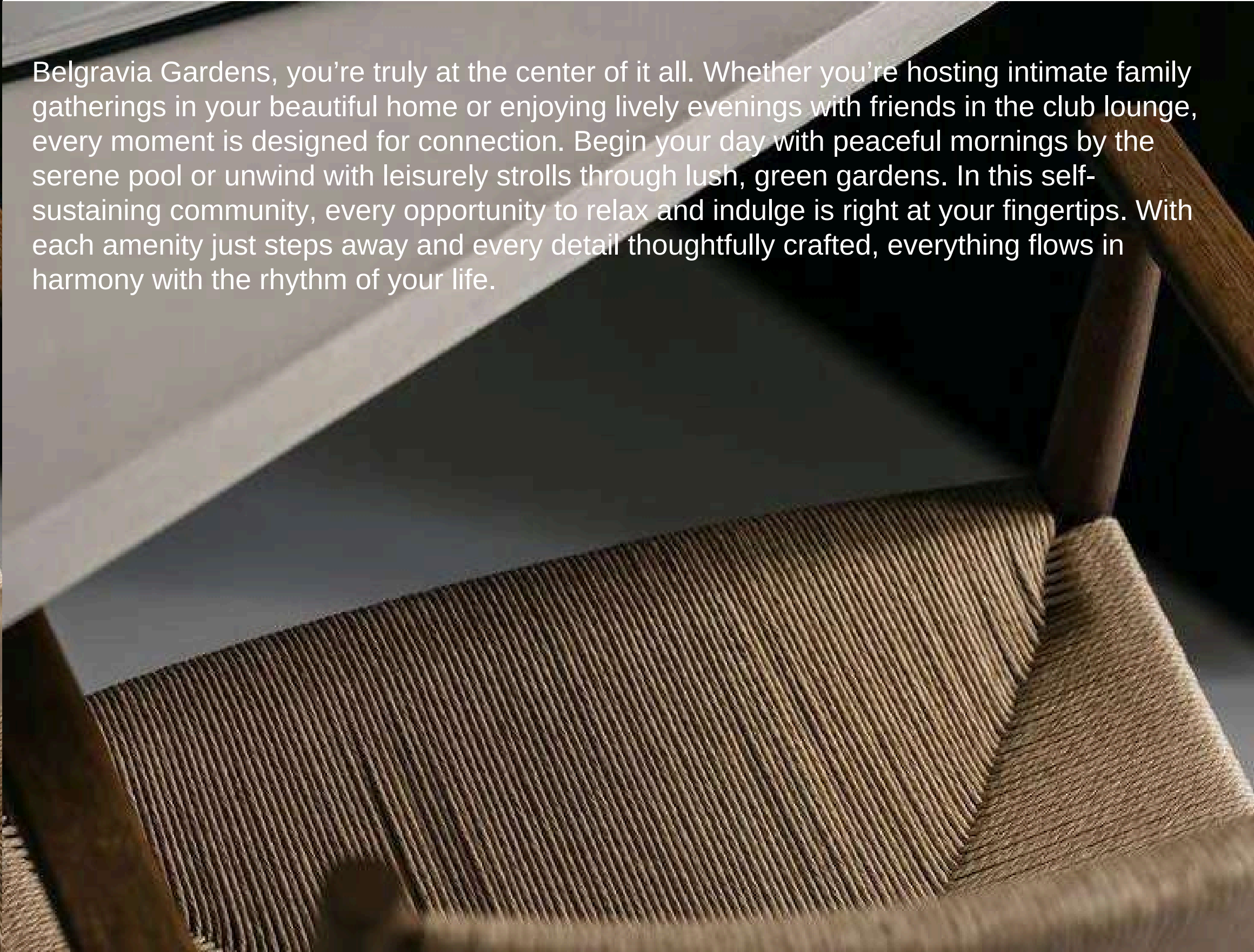


Belgravia Gardens is nestled in the heart of Dubailand, a community that embodies the perfect synergy of urban energy and serene living. Surrounded by lush landscapes and thriving neighborhoods, Dubailand is more than a location – it's a lifestyle. This rapidly evolving destination offers seamless connectivity to key areas of Dubai while fostering a sense of tranquility, making it an ideal setting for those who seek a harmonious balance between work, leisure, and home.



THE CONCEPT

Belgravia Gardens, you're truly at the center of it all. Whether you're hosting intimate family gatherings in your beautiful home or enjoying lively evenings with friends in the club lounge, every moment is designed for connection. Begin your day with peaceful mornings by the serene pool or unwind with leisurely strolls through lush, green gardens. In this self-sustaining community, every opportunity to relax and indulge is right at your fingertips. With each amenity just steps away and every detail thoughtfully crafted, everything flows in harmony with the rhythm of your life.



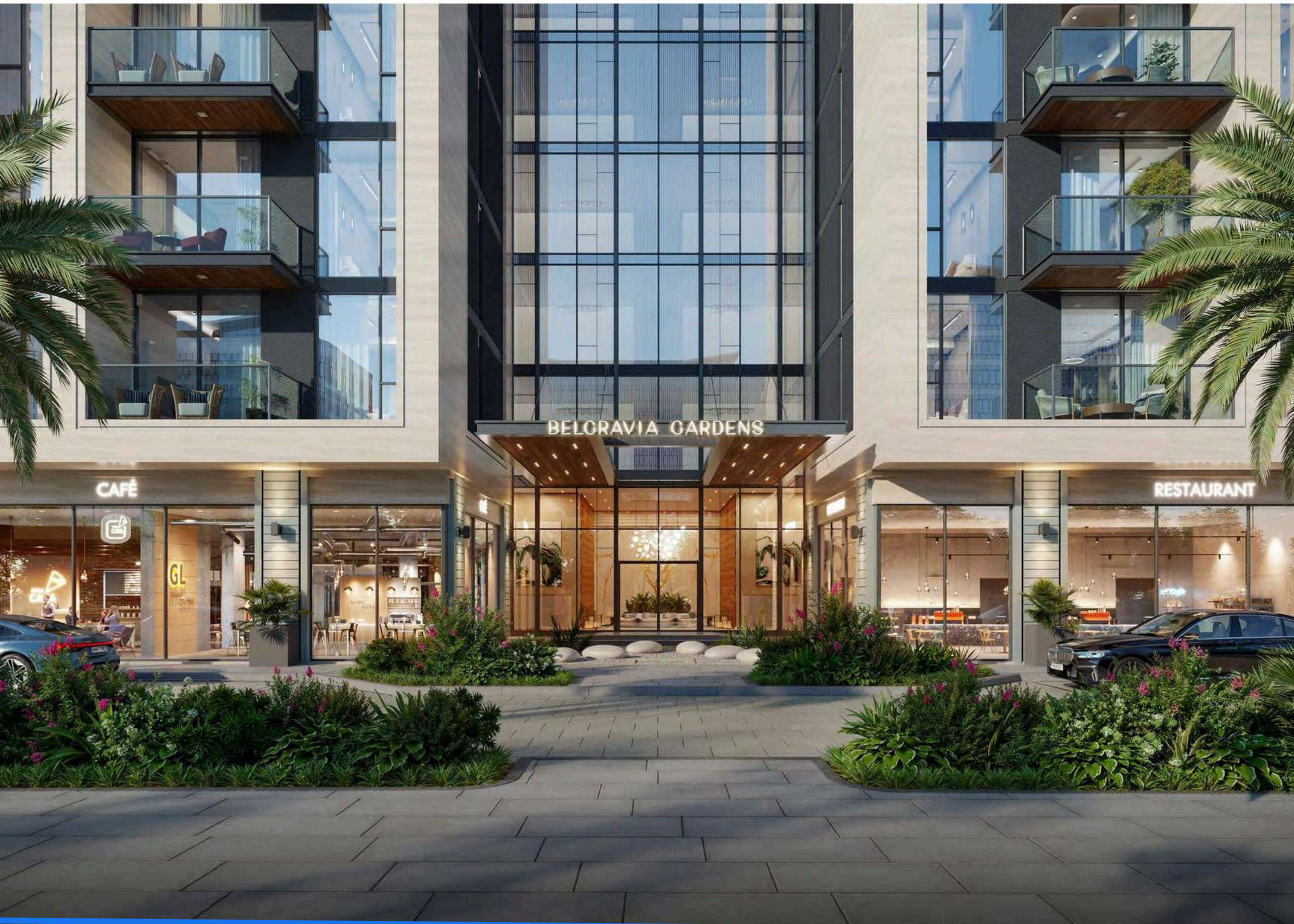


BELGRAVIA GARDEN



The architectural design of Belgravia Gardens tells a story of elegance and innovation. The façade features a blend of bold, modern elements with subtle, nature-inspired accents, creating a unique identity within the community.

Expansive glass panels invite natural light while reflecting the beauty of the surrounding greenery. Every detail, from textured cladding to sculptural forms, has been meticulously considered, ensuring the development becomes a visual icon in Dubailand.



Belgravia Gardens elevates everyday living with its thoughtfully designed retail and F&B spaces. This isn't just a collection of shops and restaurants; it's a destination where residents and visitors can connect, unwind, and explore. From artisanal cafes to gourmet dining, the offerings are curated to reflect diverse tastes and lifestyles.

The retail promenade, integrated seamlessly into the community, serves as a vibrant gathering place that fosters connection and convenience while enhancing the overall living experience.

LEISURE POOL



The pools, interconnected by a lazy river, create a serene aquatic retreat. This tranquil space offers a seamless escape, where you can drift at your own pace or simply bask in the soothing atmosphere. The harmonious design of the pools enhances the feeling of openness, making it the perfect setting to unwind and enjoy the art of leisure. Surrounded by lush landscaping and gentle water features, the area invites you to relax in a peaceful environment, embracing both relaxation and natural beauty.



THE LAZY RIVER

The lazy river at Belgravia Gardens is a central feature that brings the entire community together. Flowing seamlessly between all four clusters, it creates a sense of connection and continuity throughout the development. Each cluster has its own individual pool deck, offering residents exclusive spaces to relax and unwind, while the lazy river weaves these areas together and culminates in a larger communal pool. This thoughtfully designed feature not only enhances the aesthetic appeal of the community but also provides a tranquil escape where residents can enjoy leisurely moments in harmony with their surroundings.

KIDS PLAY AREA



The kids' comic room is a playful yet stylish retreat, where young imaginations are free to roam. Writable and erasable walls inspire creativity, while colourful accents add a whimsical touch. Designed with care, the space features a dedicated children's toilet and shoe caddy, maintaining cleanliness while offering an environment where children can play, explore, and dream. Soft seating and cozy reading nooks provide comfortable spaces for kids to relax with their favorite comics. Interactive play zones encourage social interaction and hands-on learning, making the room both fun and engaging.



BELGRAVIA GARDEN

The image shows a modern, multi-story apartment building with a central glass-enclosed section and balconies on either side. The building is illuminated from within, and the balconies have glass railings. In the foreground, there is a large, rectangular swimming pool with a sandy beach area. The pool is surrounded by lush landscaping, including several tall palm trees and various tropical plants. In the bottom foreground, there are lounge chairs and a small table with a drink, suggesting a relaxing atmosphere. The sky is a mix of blue and orange, indicating sunset or sunrise.

URBAN POOL

The beach pool is a tranquil retreat where sand and water come together in beach-like bliss. Its sandy shores invite relaxation, while the gentle waves of the pool evoke the calming rhythm of the by lush landscaping and comfortable seating areas, it's the perfect spot to relax, socialize, or simply enjoy the peaceful atmosphere sea. A place to unwind and embrace the serenity of beachside living, the beach pool offers an idyllic escape to rejuvenate both body and spirit. Surrounded

CLUBHOUSE





MAJLIS



SPORTS COURTS



PRIVATE DINING



GAME STATION



FITNESS STUDIO

TO ABU DHABI

BUSINESS
BAY

DOWNTOWN
DUBAI

DUBAI INTERNATIONAL
FINANCIAL CENTRE

TO DUBAI
INTERNATIONAL
AIRPORT

E311 Sheikh Mohamed Bin Zayed

Proposed Waterfront

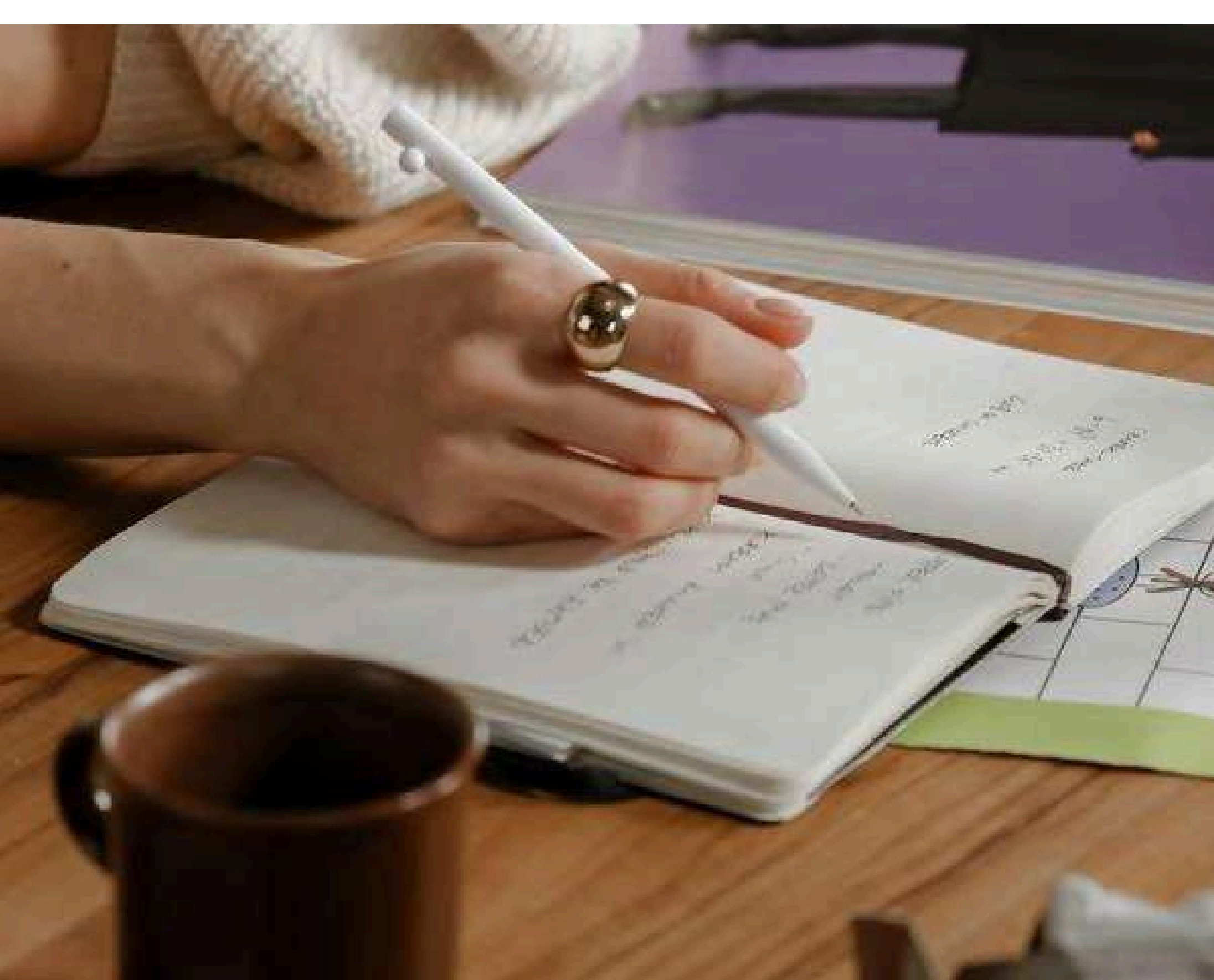
BUILDING D

BUILDING C

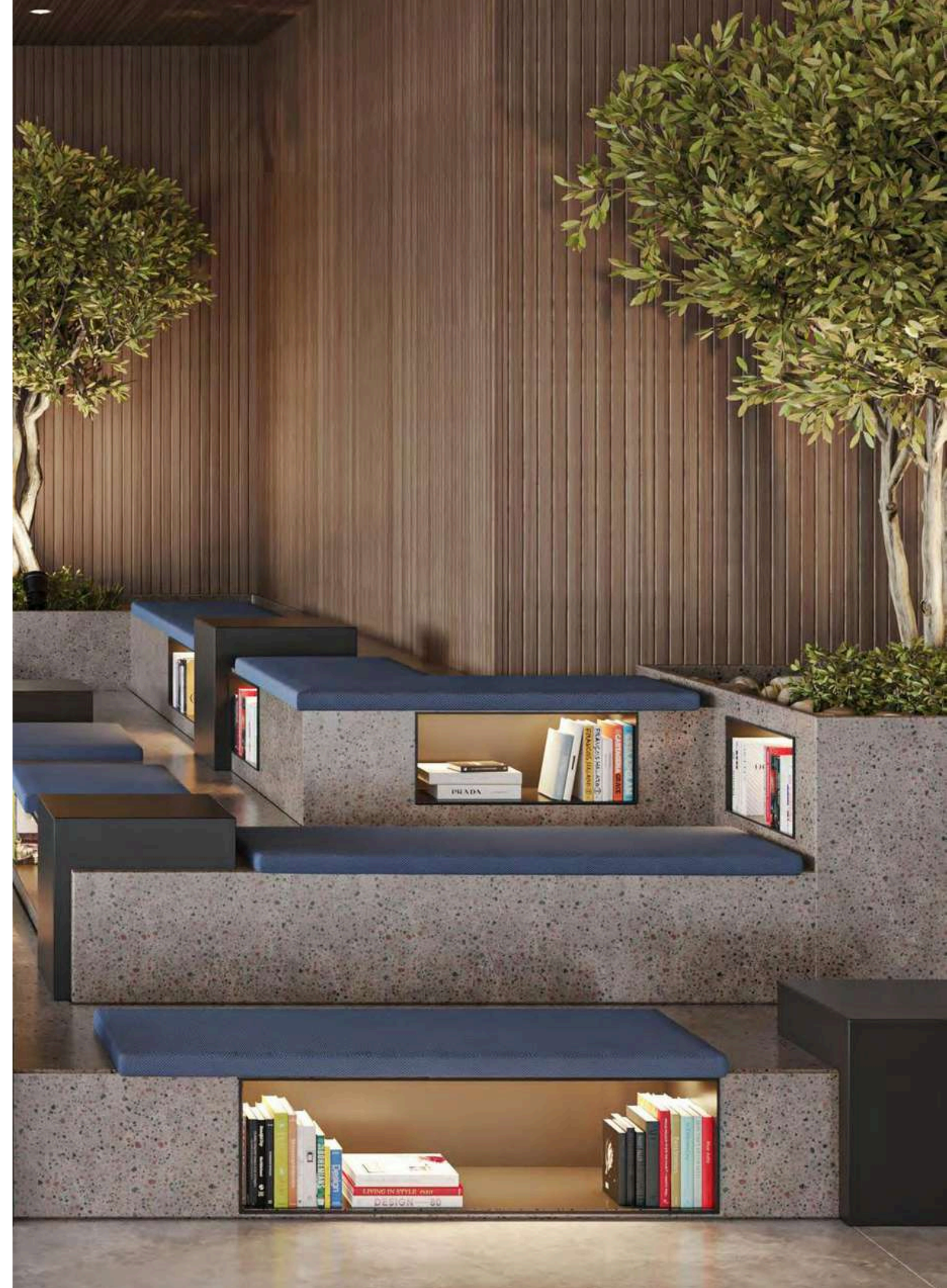
BUILDING A

BUILDING B





CO-WORKING HUB





BELGRAVIA GARDEN



BELGRAVIA GARDEN



BELGRAVIA GARDEN



LOBBY

A modern multi-story apartment building at dusk. The building features a mix of light-colored panels and dark window frames. Many balconies have glass railings and are illuminated from within, showing warm interior lights. Some balconies have small plants. The ground floor has large glass windows for shops, with signs for 'RESTAURANT', 'GROCERY', and 'SUPERMARKET'. A dark blue car is parked in the foreground on the right, and a silver SUV is parked further back on the left. There are palm trees and other landscaping in the foreground and around the building. The sky is a deep blue with some light clouds.

RESIDENCES

Each home is thoughtfully designed to offer modern living with open layouts, premium finishes, and ample natural light. Whether you're looking for a cozy studio, a comfortable one-bedroom, or a more expansive two or three-bedroom apartment, Belgravia Gardens provides a perfect living space for individuals, couples, and families alike.



SOPHISTICATED LIVING SPACES

Elegantly designed with high ceilings and abundant natural light, the living rooms offer a spacious and inviting atmosphere. A stone dining tabletop adds refinement, while the modular sofa, modern side tables, and plush rugs create a stylish and comfortable setting. Thoughtful shelving and a sleek TV unit combine form and function, making the space perfect for both relaxation and entertaining. Large windows frame picturesque views, enhancing the connection to the outdoors and further enriching the serene and open ambiance of the living room.



CULINARY MASTERPIECES

Designed for both beauty and practicality, the kitchens feature innovative storage solutions, including a ledge for spices and creative plate storage, ensuring easy access and organization. Floor-to-ceiling cabinetry with integrated appliances creates a sleek, seamless modern look, while timber and stone countertops add natural warmth. Thoughtful lighting and design details enhance the overall aesthetic, making the kitchen a stylish and functional centerpiece in the home.



YOUR SERENE SANCTUARY

The bedrooms offer a serene retreat with soft, natural tones and thoughtful details. Padded headboards, sleek metal frames, and integrated bedside lighting create a calming atmosphere. Recessed wardrobe doors and niched vanities blend elegance with practicality, while wall-mounted mirrors and open shelving enhance the room's sense of space.

Large windows allow natural light to flood the room, further enhancing the tranquil ambiance and creating a seamless connection with the outdoors.



Where Prestige Meets Property



At Majara Luxury Real Estate L.L.C., we redefine the art of luxury living. Based in the heart of the UAE, we specialize in curating exceptional real estate experiences tailored to the needs of discerning investors, end-users, and global clientele.



With a refined portfolio of premium properties across all seven Emirates, our expertise lies in both off-plan and ready-to-move assets, offering opportunities that blend architectural excellence with investment potential.



We are more than just property consultants & we are partners in your journey to finding the perfect home, investment, or lifestyle. Driven by integrity, market insight, and personalized service, Majara stands as a trusted name in an ever-evolving market.

Contact Us :

Phone: +971564452803

Email: info@majararealestate.com

<https://majararealestate.com/>