

AJMAN PEARL

TOWER

MAJARA LUXURY REAL ESTATE LLC

Head Office Level 36-01, Po Box :124382 , Trade Center 1, Sheikh Zayed Road , Burj Al Salam Tower Dubai UAE

Majara Presents Ajman Pearl Tower – Your Downtown Waterfront Retreat in Ajman

A Luxurious Oasis in the Heart of Ajman

Ajman, a hidden gem in the UAE, blends natural beauty, rich heritage, and modern convenience. At its vibrant heart, Ajman Pearl Tower offers sophisticated comfort and contemporary living for a serene yet connected lifestyle



WHY INVEST IN AJMAN

Ajman combines safety, strategic access across the Emirates, and investor-friendly policies, with Golden Visa opportunities and ongoing urban growth enhancing its appeal.



AJMAN DOWNTOWN

Ajman Downtown is one of the emirate's most sought-after neighborhoods, offering a dynamic atmosphere and strategic location near shopping, schools, hospitals, and beaches. Ajman Pearl Towers combines modern living with unmatched convenience for professionals and families alike.

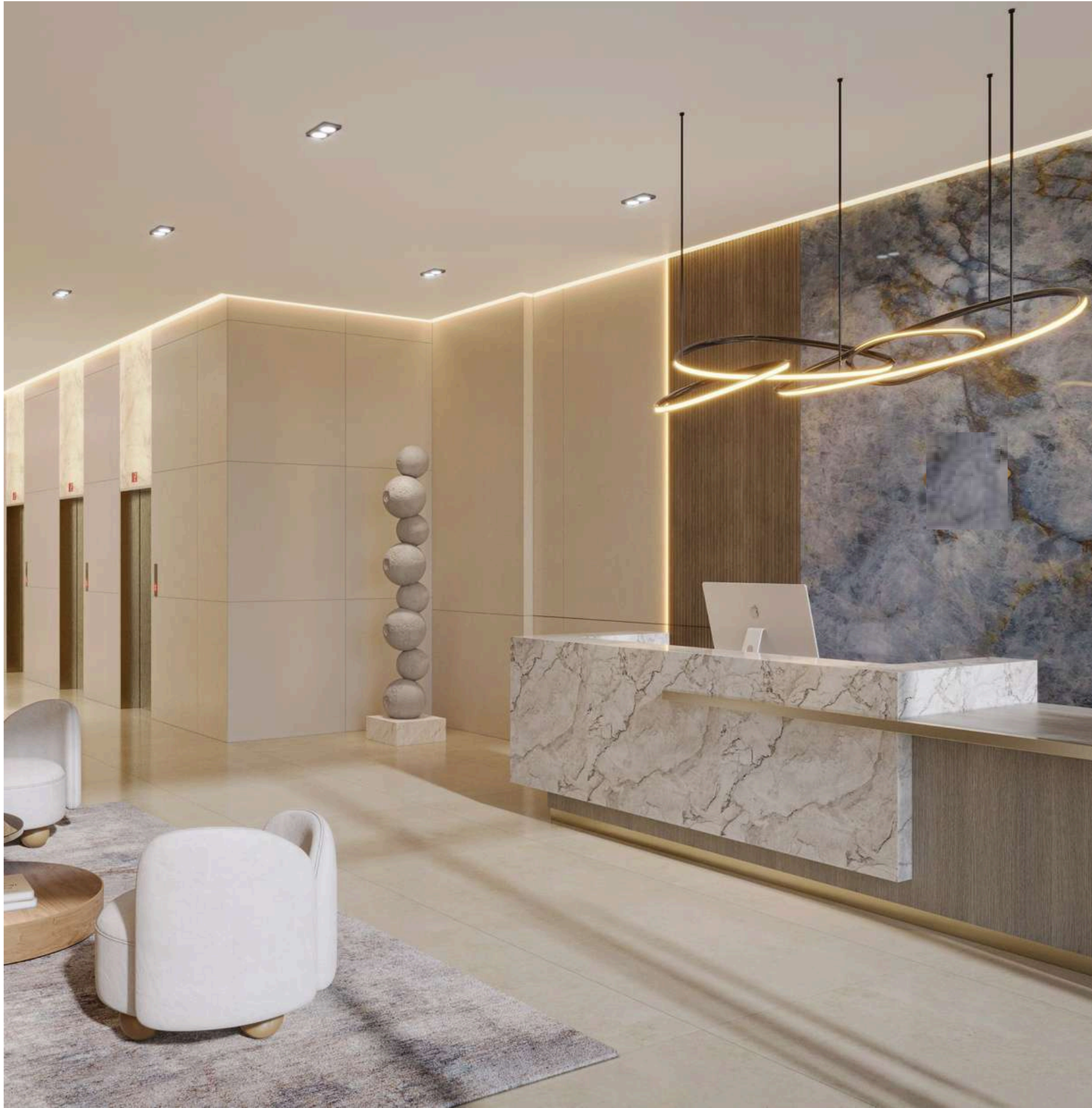


Ajman Pearl Tower offers 208 exclusive apartments that blend sophistication with modern comfort. Featuring meticulously designed 1- and 2-bedroom homes with spacious layouts and premium finishes, it creates a serene, coveted address in the heart of Ajman.



Peerless Quality

Ajman Pearl Tower delivers an unparalleled living experience, with exclusive homes, meticulous craftsmanship, premium materials, and timeless elegance that ensure lasting value.





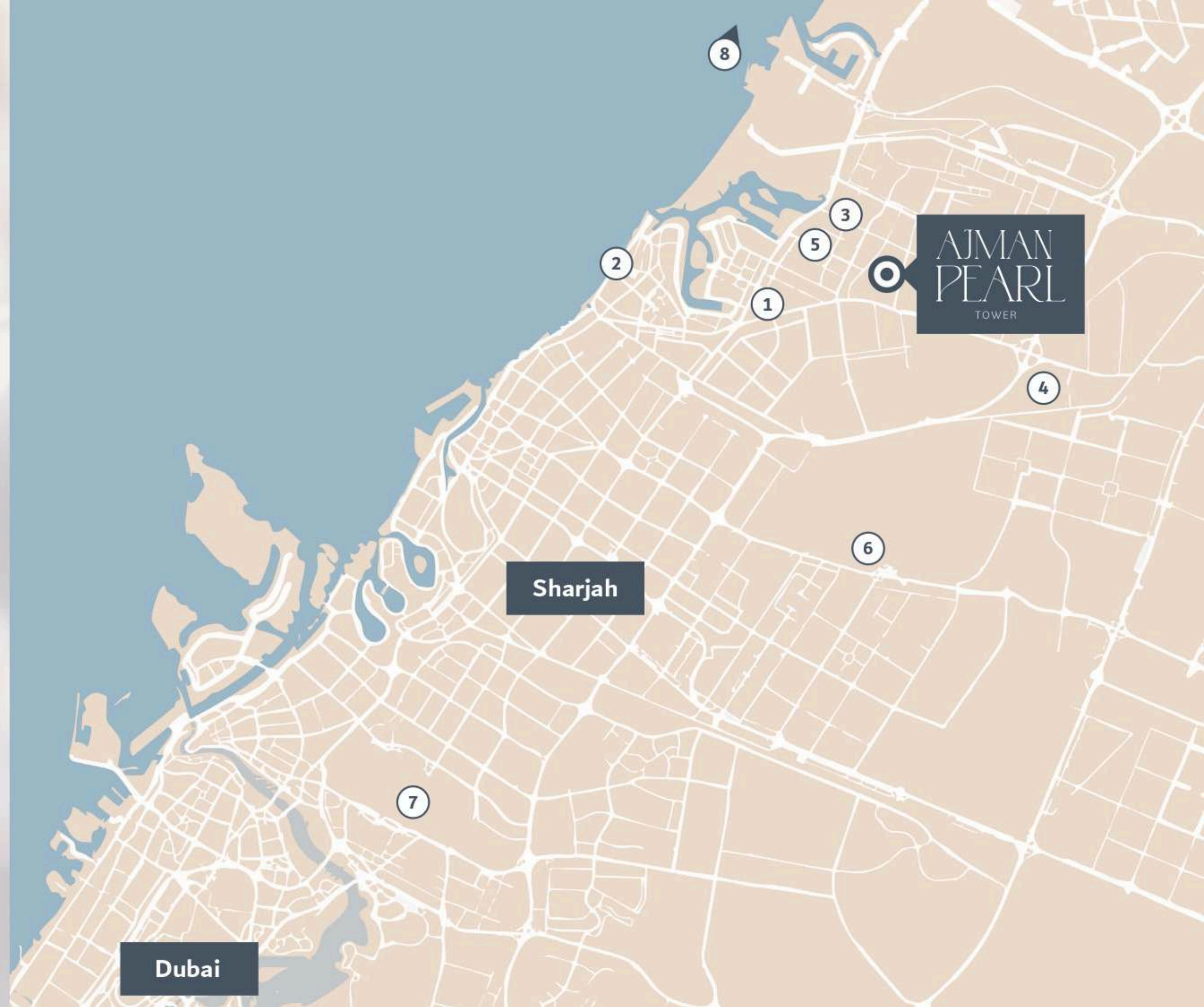




URBAN CONVENIENCE AT YOUR DOORSTEP

Nestled in Ajman's vibrant heart, Ajman Pearl Tower grants residents effortless access to the city's finest offerings. Residents will appreciate the proximity to:

1. Ajman City Centre: 10 Min.
2. Ajman Beach: 10 Min.
3. Amina Hospital: 10 Min.
4. Al Hamediya Park: 14 Min.
5. Ajman University: 15 Min.
6. Sharjah International Airport: 20 Min.
7. Dubai International Airport: 30 Min.
8. Al Marjan Island-RAK: 48 Min.



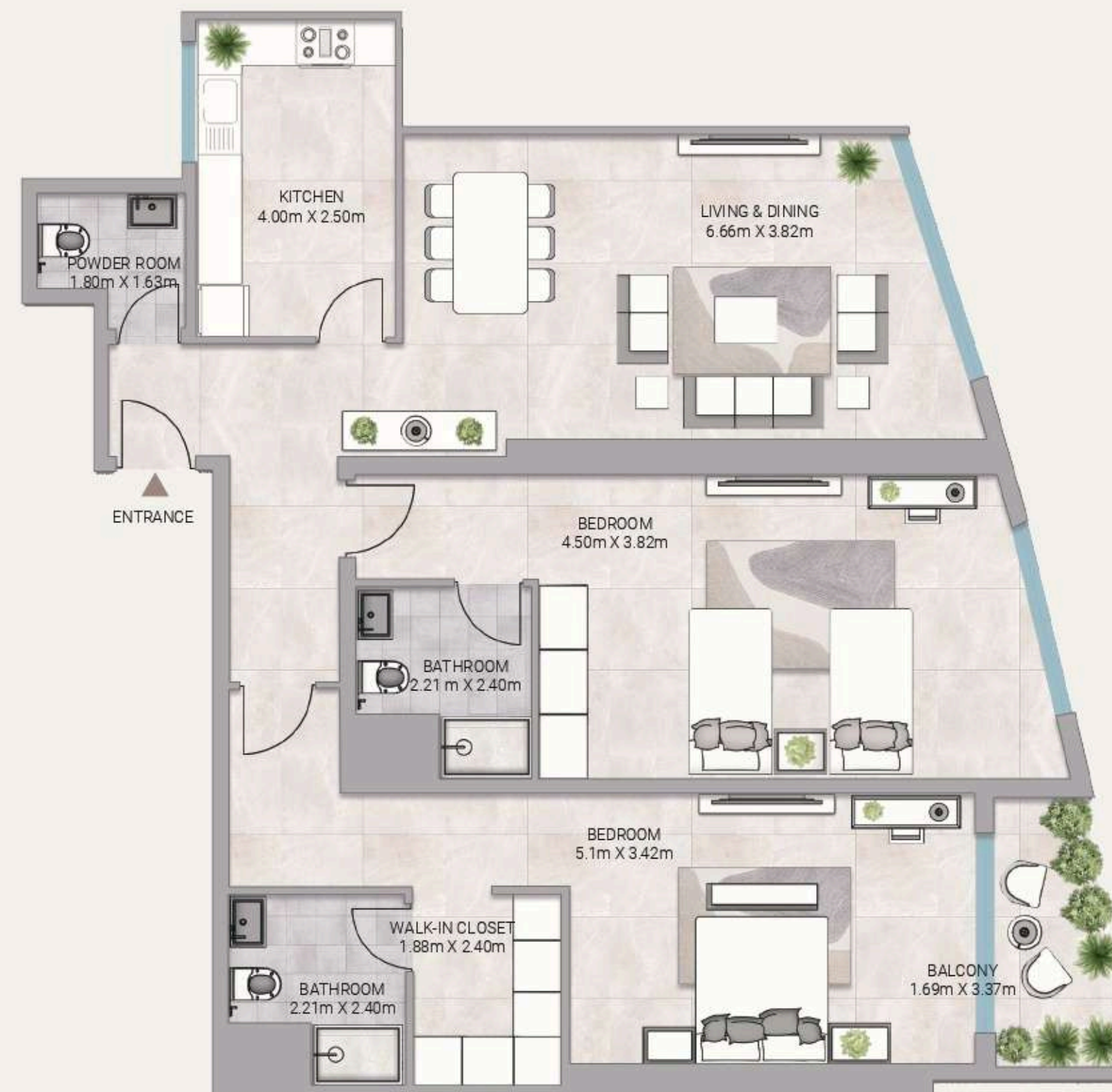
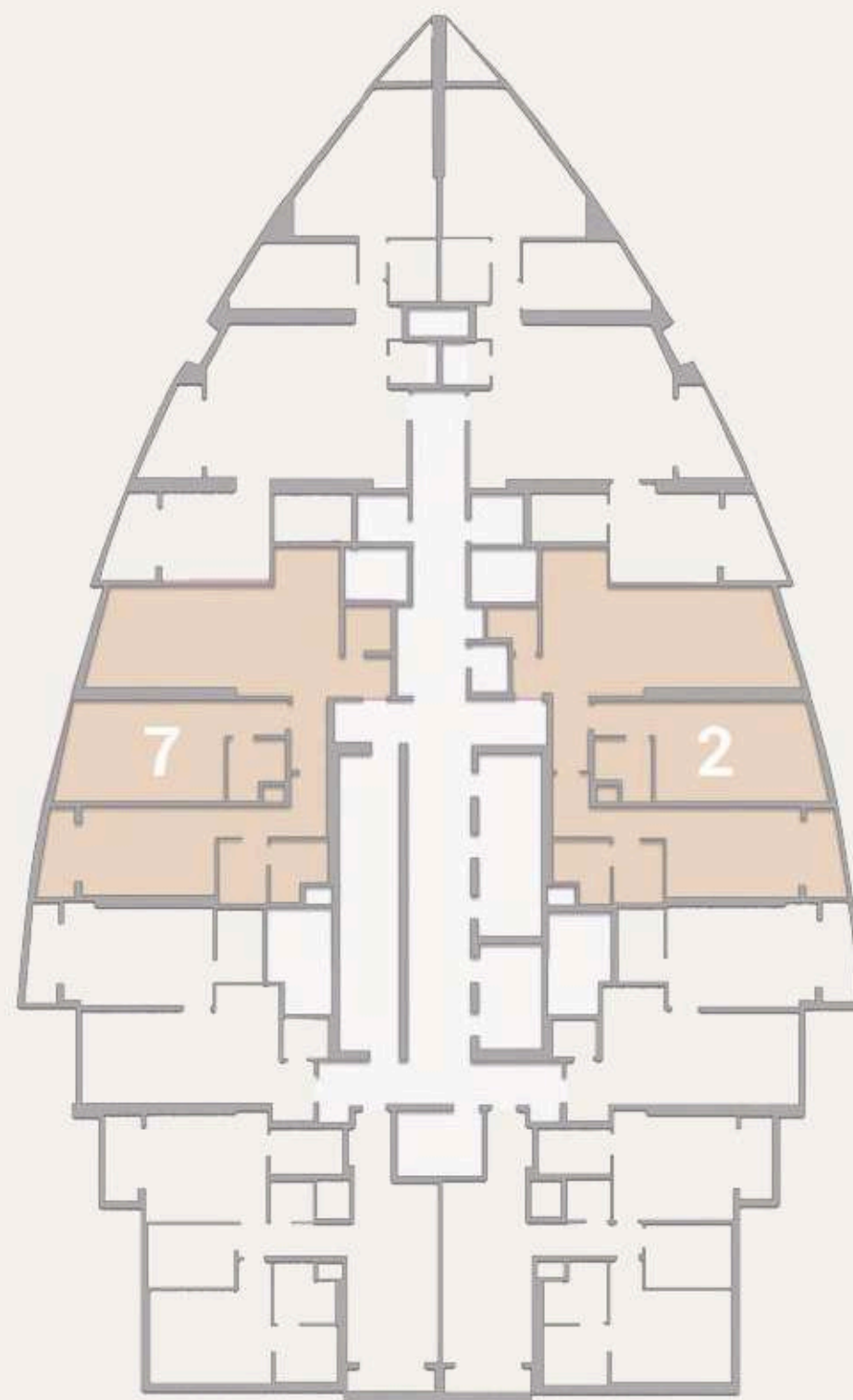
AJMAN PEARL TOWER

SERIES 2

Size 2 BHK
Gross Area 2009.41 sq.ft.
186.68 sqm.

SERIES 7

Size 2 BHK
Gross Area 1933.09 sq.ft.
179.58 sqm.



Disclaimer:

1. All materials, finishes, dimensions and drawings are approximate.
2. Actual suite area may vary from the stated area.
3. Drawings are not to scale.
4. Information is subject to change without notice.
5. The Developer reserves the right to make revisions/alterations without any liability whatsoever.

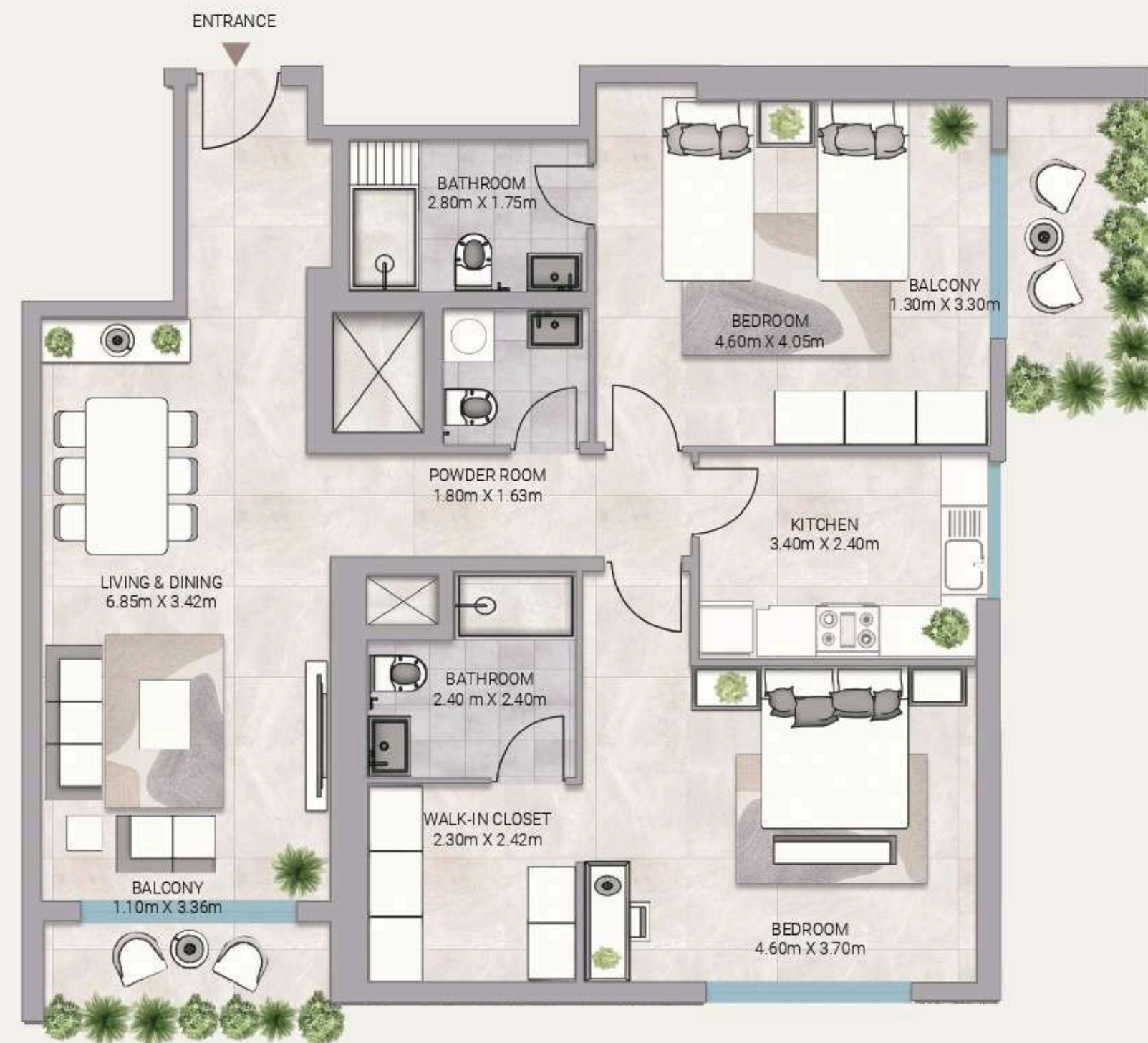
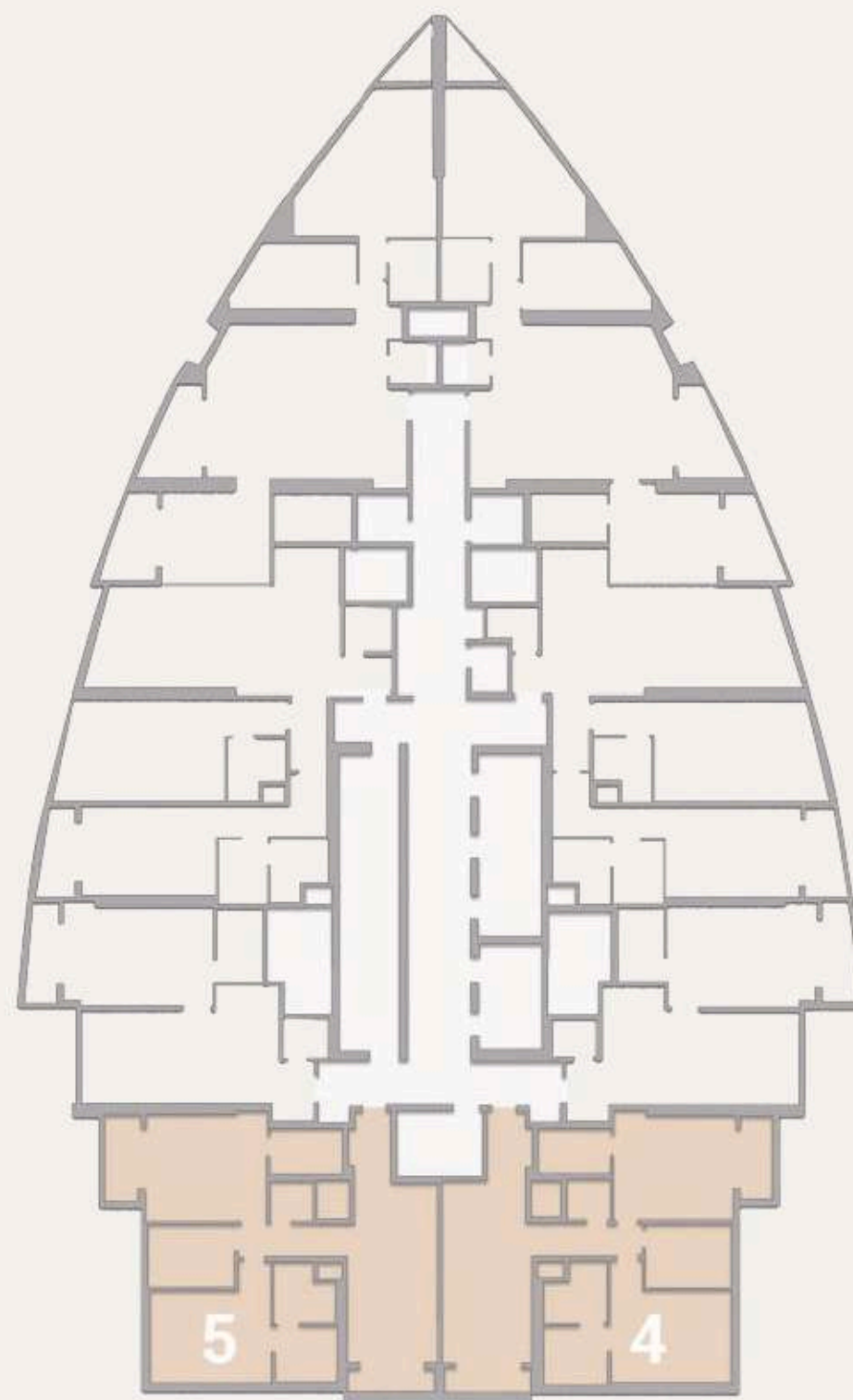
AJMAN PEARL TOWER

SERIES 4

Size 2 BHK
Gross Area 1777.12 sq.ft.
165.09 sqm.

SERIES 5

Size 2 BHK
Gross Area 1777.01 sq.ft.
165.08 sqm.



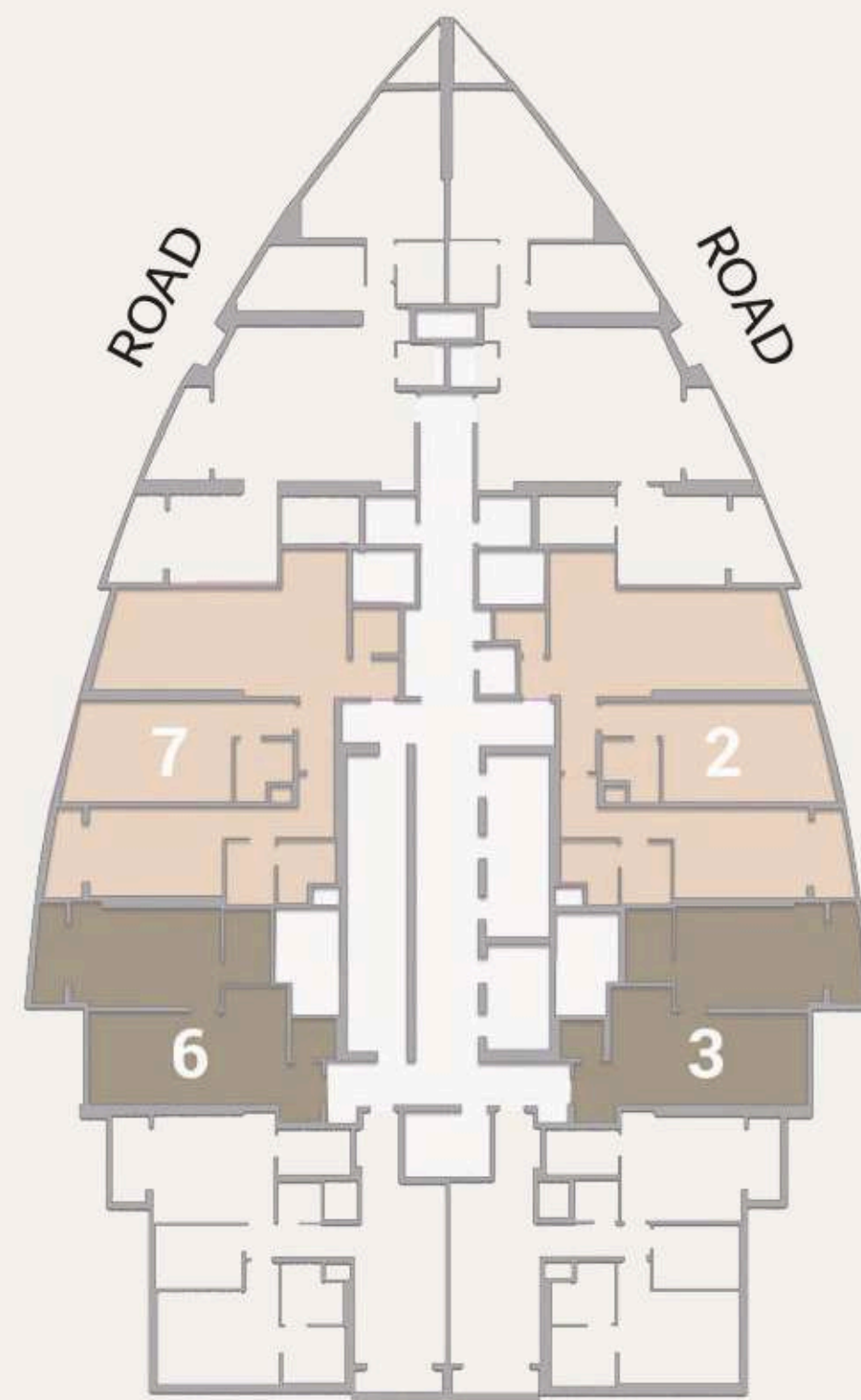
Disclaimer:

1. All materials, finishes, dimensions and drawings are approximate.
2. Actual suite area may vary from the stated area.
3. Drawings are not to scale.
4. Information is subject to change without notice.
5. The Developer reserves the right to make revisions/alterations without any liability whatsoever.

AJMAN PEARL

TOWER

OPENED KITCHEN



NEIGHBOUR

- 1 BEDROOM
- 2 BEDROOM

AN ENRICHED LIFE

Ajman Pearl Tower offers amenities designed to enhance residents' lifestyles and provide opportunities for relaxation, recreation, and community engagement.

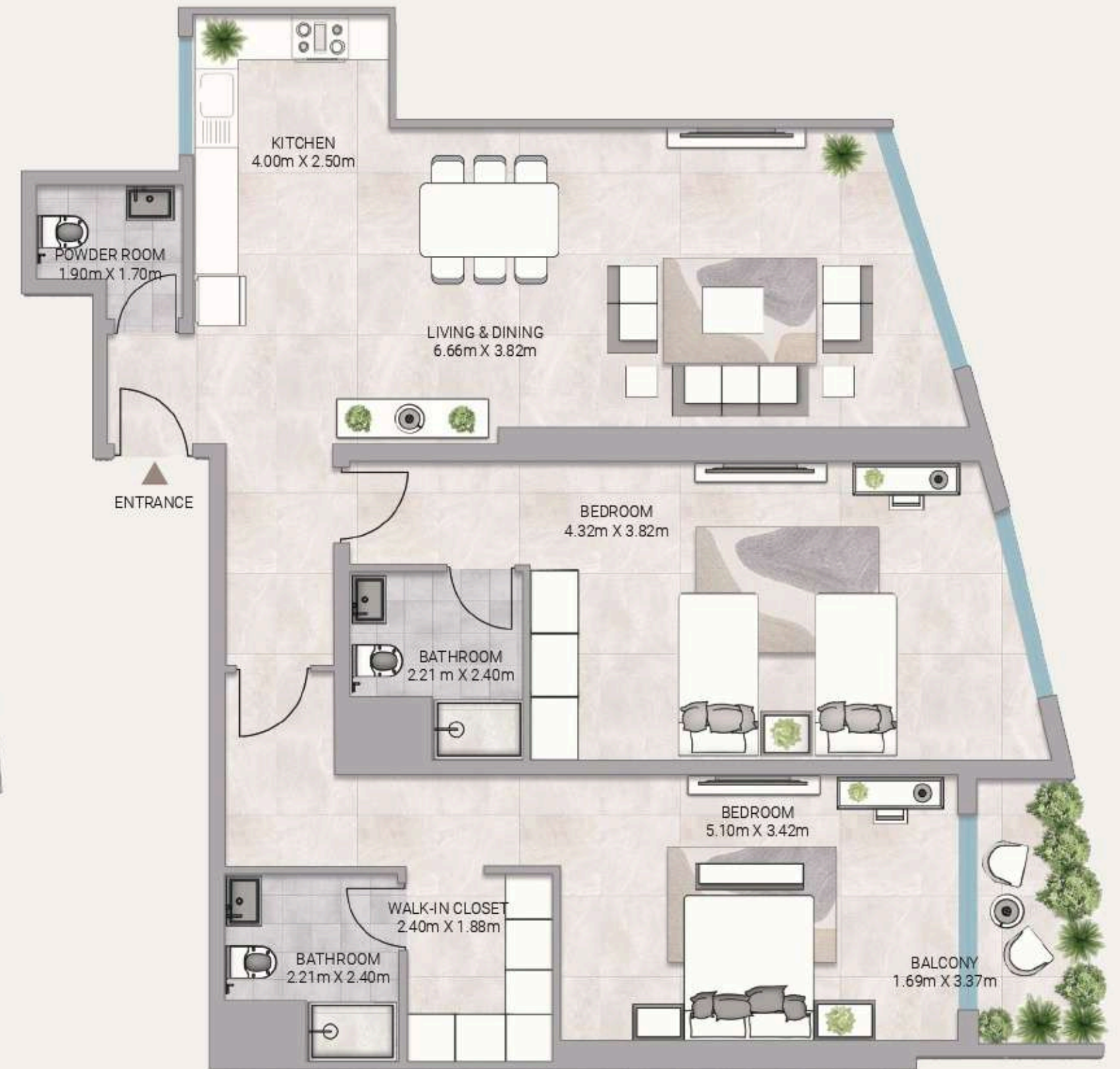
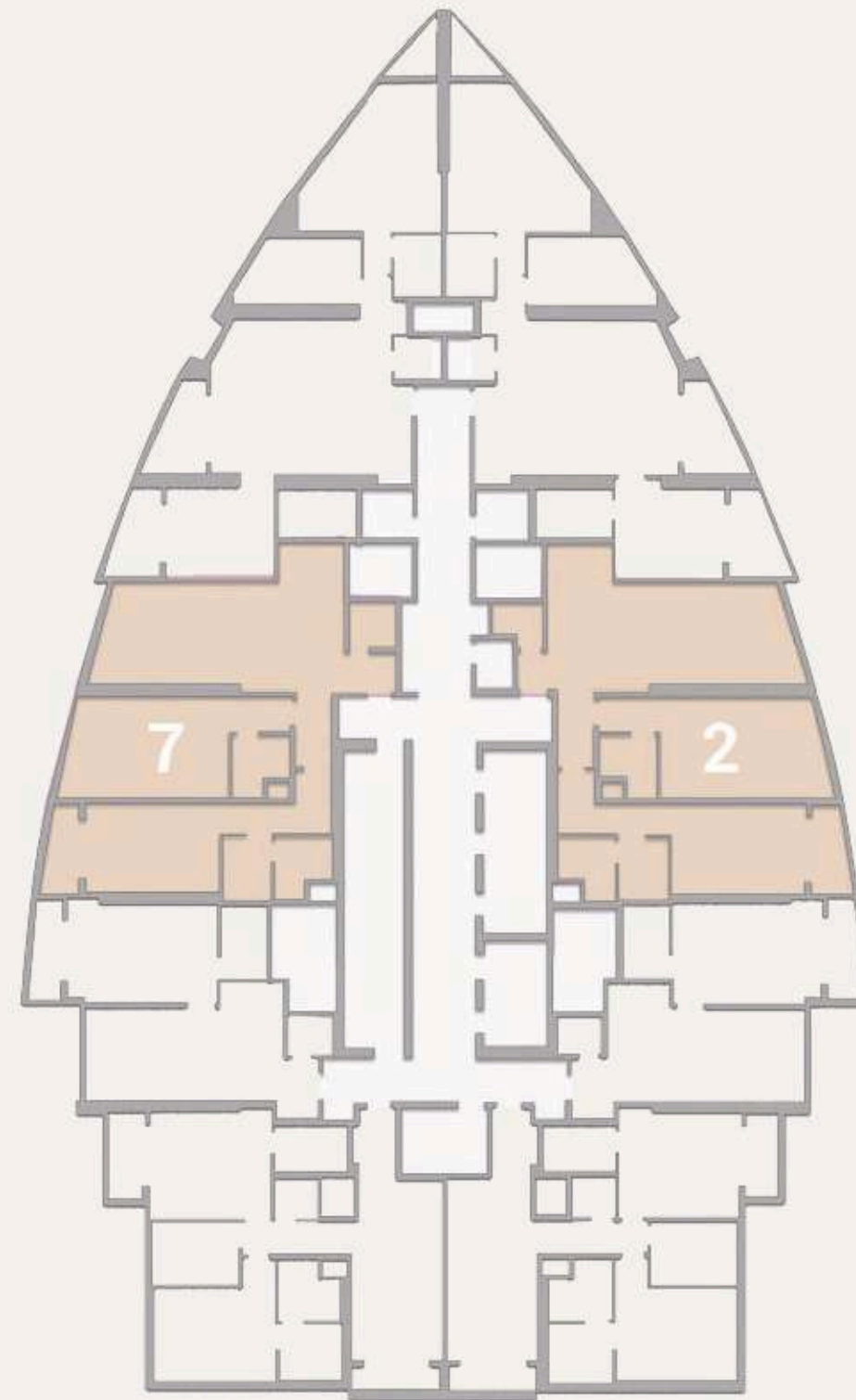
AJMAN PEARL TOWER

SERIES 2

Size 2 BHK
Gross Area 2009.41 sq.ft.
186.68 sqm.

SERIES 7

Size 2 BHK
Gross Area 1933.09 sq.ft.
179.58 sqm.



Disclaimer:

1. All materials, finishes, dimensions and drawings are approximate.
2. Actual suite area may vary from the stated area.
3. Drawings are not to scale.
4. Information is subject to change without notice.
5. The Developer reserves the right to make revisions/alterations without any liability whatsoever.

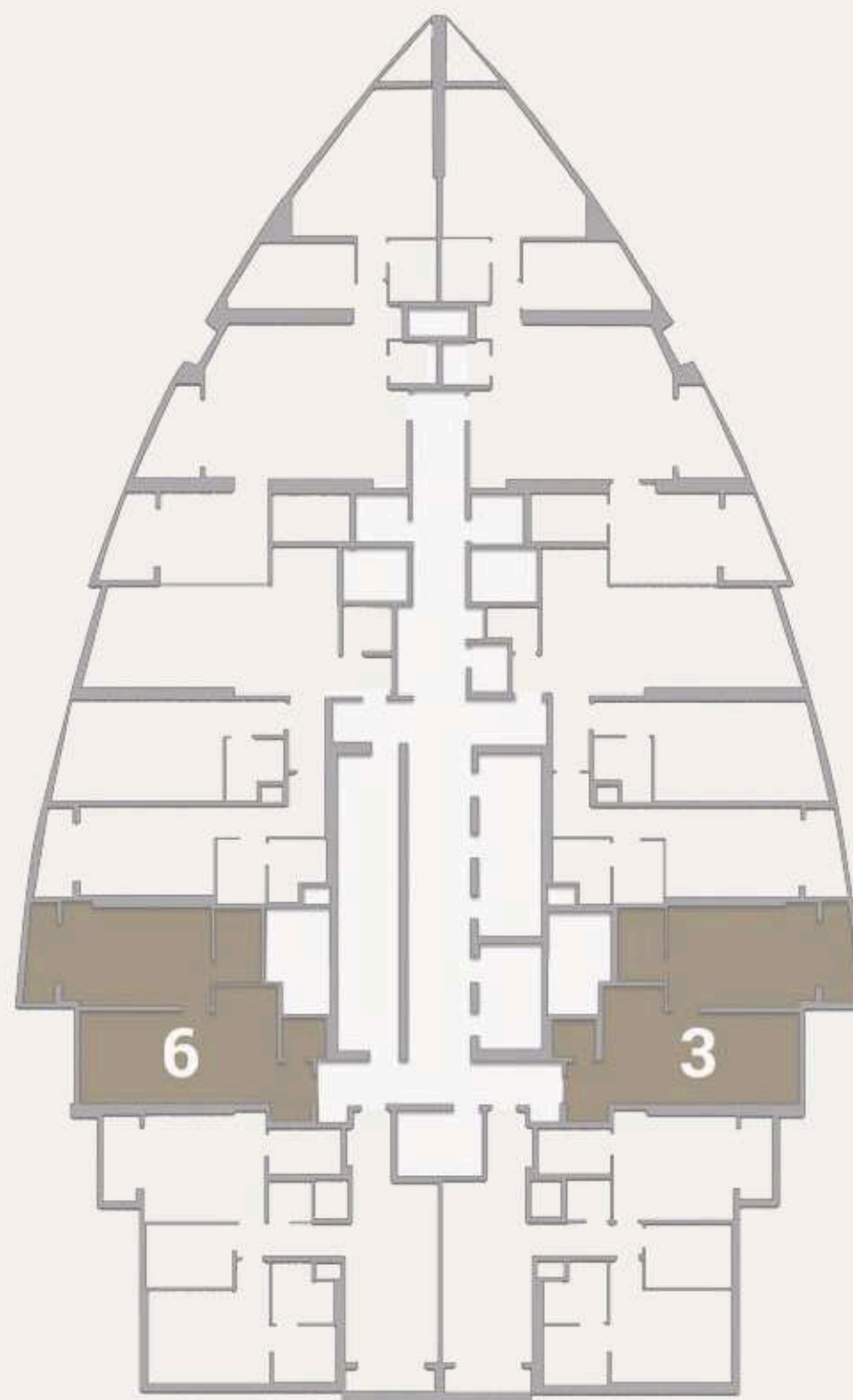
AJMAN PEARL TOWER

SERIES 3

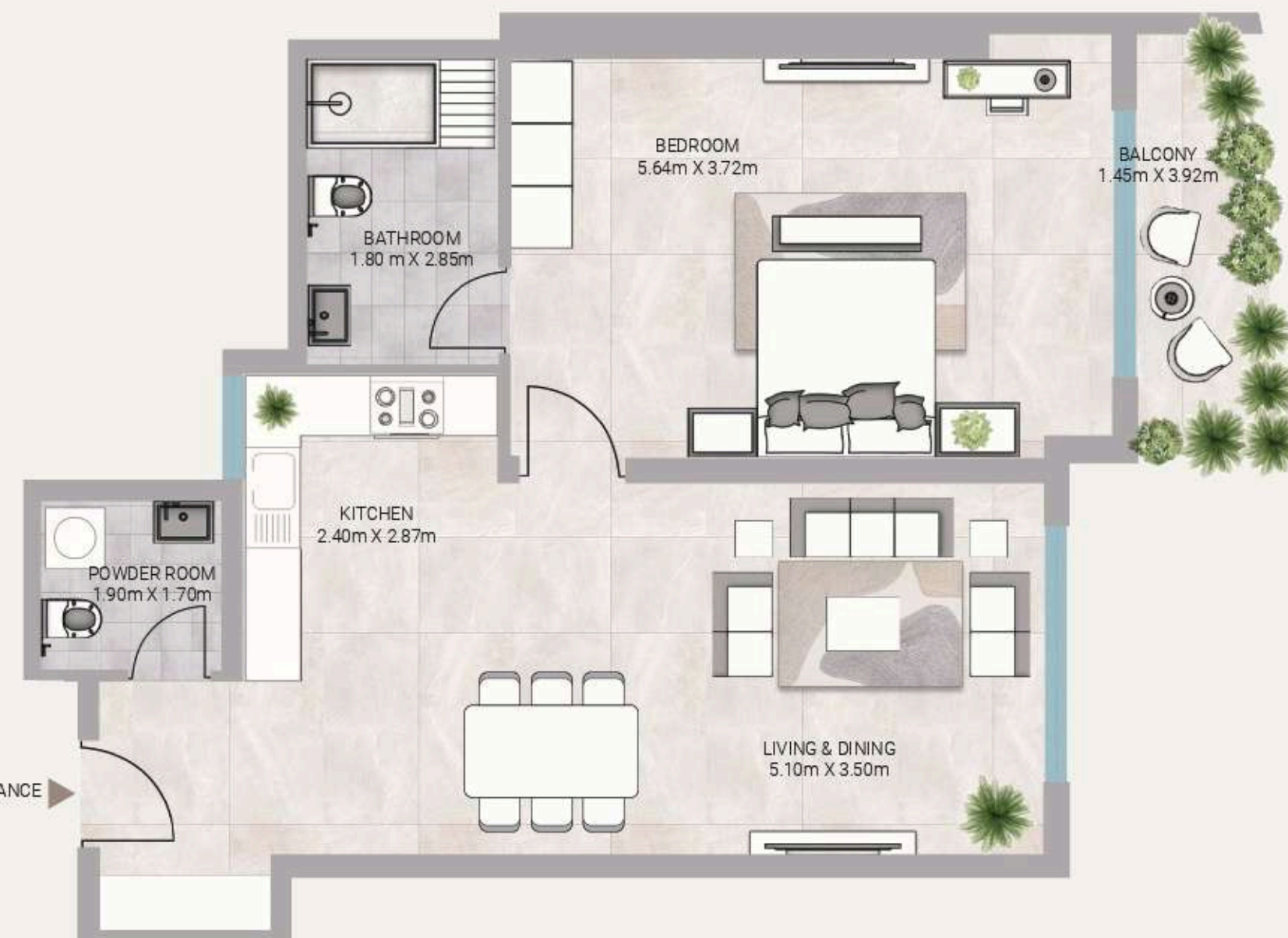
Size 1 BHK
Gross Area 1083.28 sq.ft.
100.64 sqm.

SERIES 6

Size 1 BHK
Gross Area 1083.28 sq.ft.
100.64 sqm.



ENTRANCE



Disclaimer:

1. All materials, finishes, dimensions and drawings are approximate.
2. Actual suite area may vary from the stated area.
3. Drawings are not to scale.
4. Information is subject to change without notice.
5. The Developer reserves the right to make revisions/alterations without any liability whatsoever.

AJMAN PEARL TOWERS: FACTS & FEATURES

PROPERTY TYPE: Residential Apartments

PROPERTY LOCATION: Ajman Downtown

TOTAL NUMBER OF UNITS: 208

UNIT MIX: 1 and 2 Beds

1 BEDROOM SIZE: 1083 sqft
Starting from 587,000 AED

2 BEDROOM SIZE: 2096 sqft
Starting from: 957,000 AED

COMPLETION DATE: Q4/2027

HANDOVER DATE: Q1/2028

PAYMENT PLAN: 40/60
(2 years/4 years, Total 6 years)





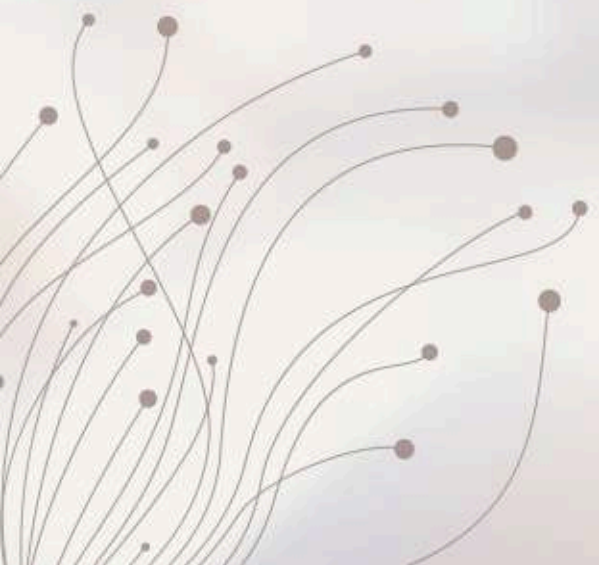
NEARBY

Markets and Shopping Centers
Schools and Universities
Recreation Centers
Restaurants
Walking Areas
Sitting Areas
Parks



ON-SITE

Landscaped gardens
Children's play area
24/7 security
Covered parking
High-speed elevators
Retail space





Where Prestige Meets Property



At Majara Luxury Real Estate L.L.C., we redefine the art of luxury living. Based in the heart of the UAE, we specialize in curating exceptional real estate experiences tailored to the needs of discerning investors, end-users, and global clientele.



With a refined portfolio of premium properties across all seven Emirates, our expertise lies in both off-plan and ready-to-move assets, offering opportunities that blend architectural excellence with investment potential.



We are more than just property consultants & we are partners in your journey to finding the perfect home, investment, or lifestyle. Driven by integrity, market insight, and personalized service, Majara stands as a trusted name in an ever-evolving market.

Contact Us :

Phone: +971564452803

Email: info@majararealestate.com

<https://majararealestate.com/>