



AJMAN PEARL TOWER

DEVELOPED BY



بي تا العقارية
PROPERTIES

AN OASIS OF REFINED ELEGANCE IN AJMAN'S HEART

Ajman, a hidden gem within the UAE, offers a unique blend of natural beauty, rich cultural heritage, and modern convenience.

Its strategic location provides easy access to major hubs, ensuring a vibrant yet serene lifestyle for residents.

In its vibrant heart, Ajman Pearl Tower emerges as a residential gem, offering sophisticated comfort and modern living.

Developed by GJ Properties, it is designed for those seeking an elevated urban lifestyle, blending elegance and convenience.





WHY INVEST IN AJMAN

Ajman's appeal includes its status as a Top 5 Safest City, strategic connectivity to all 7 Emirates, investor-friendly policies with Golden Visa eligibility, and diverse, affordable property options. Ongoing infrastructure and urban development enhance its investment potential.



URBAN CONVENIENCE AT YOUR DOORSTEP

Nestled in Ajman's vibrant heart, Ajman Pearl Tower grants residents effortless access to the city's finest offerings. Residents will appreciate the proximity to:

1. Ajman City Centre: 10 Min.
2. Ajman Beach: 10 Min.
3. Amina Hospital: 10 Min.
4. Al Hamediya Park: 14 Min.
5. Ajman University: 15 Min.
6. Sharjah International Airport: 20 Min.
7. Dubai International Airport: 30 Min.
8. Al Marjan Island-RAK: 48 Min.





AJMAN DOWNTOWN

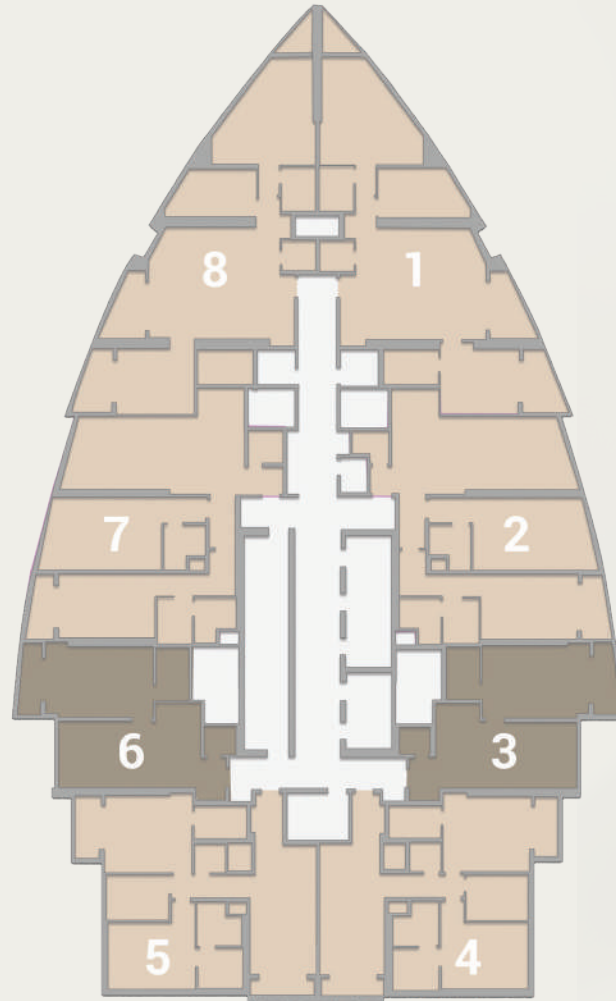
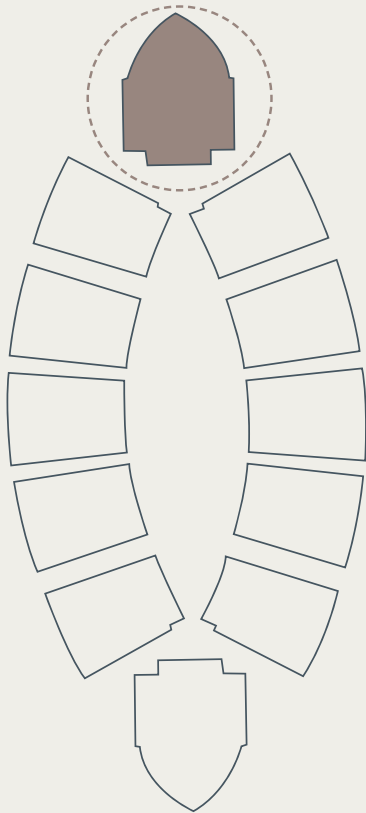
Ajman Downtown stands out as one of the Emirate's most sought-after locations, known for its dynamic atmosphere and strategic position.

With Ajman City Centre just a short distance away, residents benefit from easy access to shopping malls, schools, hospitals, and nearby beaches.

This thriving neighborhood is ideal for both professionals and families alike. Ajman Pearl Towers, nestled in this central area, offers a perfect mix of modern living and convenience, making it an excellent choice for those seeking accessibility and quality.



AJMAN PEARL TOWER



A NEW RESIDENTIAL GEM

Ajman Pearl Tower, developed by GJ Properties, offers a unique blend of sophistication and modern comfort in 208 exclusive apartments. With its prime location, exclusive homes, and unmatched quality, it aims to be a coveted address in the city.

-  1 BEDROOM
-  2 BEDROOM

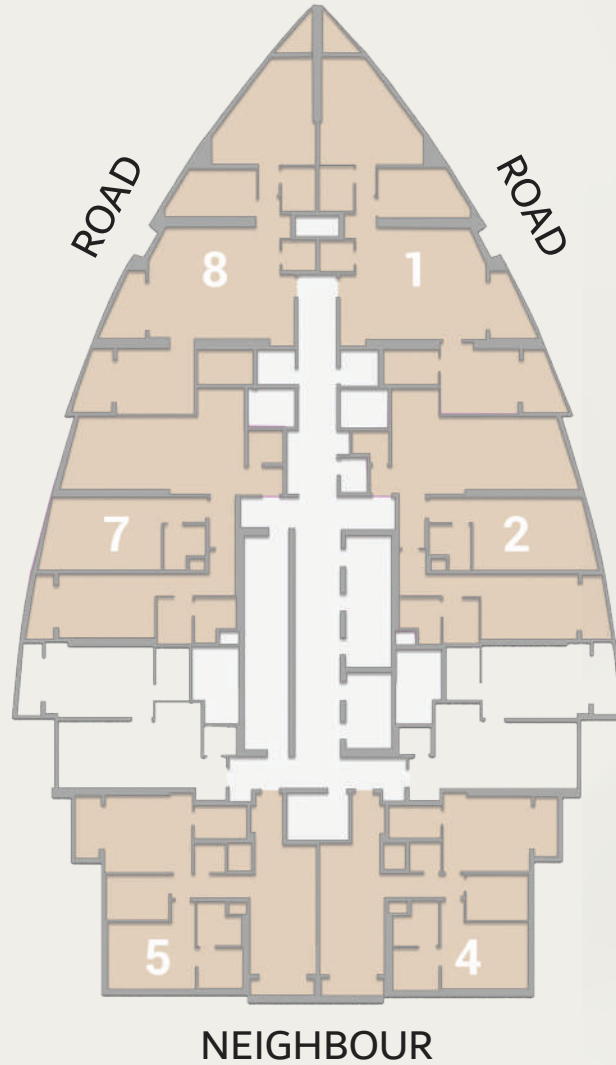




Exterior

AJMAN PEARL TOWER

CLOSED KITCHEN



2 BEDROOM

MODERN LIVING SPACES

Ajman Pearl Tower features meticulously designed 1-bedroom (1083 sqft) and 2-bedroom (2096 sqft) apartments. Each residence offers spacious layouts, high-quality finishes, and contemporary design elements, creating a haven of tranquility.





Living Room

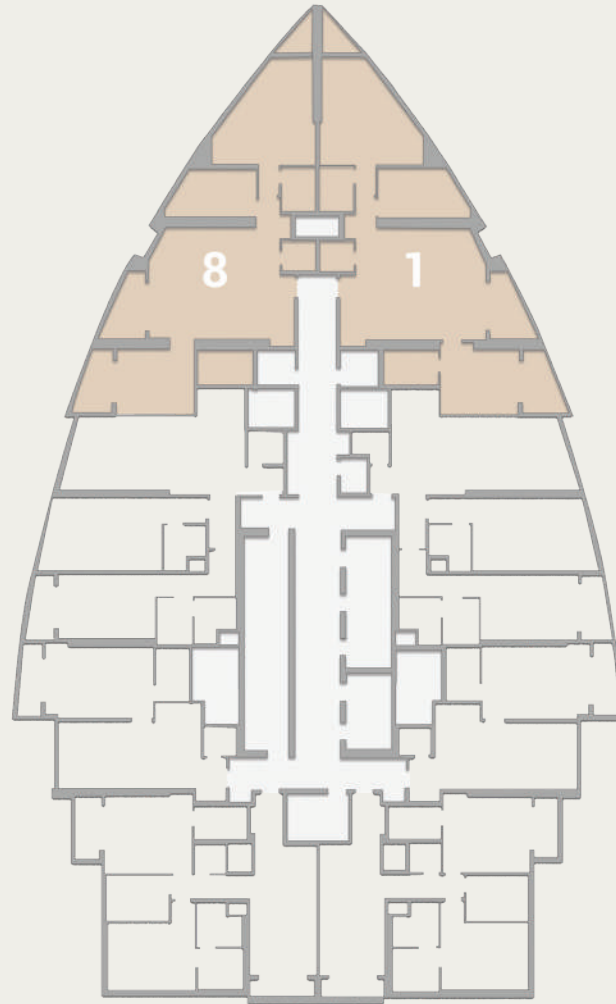
AJMAN PEARL TOWER

SERIES 1

Size 2 BHK
 Gross Area 2096.49 sq.ft.
 194.77 sqm.

SERIES 8

Size 2 BHK
 Gross Area 2057.95 sq.ft.
 191.18 sqm.



Disclaimer:

1. All materials, finishes, dimensions and drawings are approximate.
2. Actual suite area may vary from the stated area.
3. Drawings are not to scale.
4. Information is subject to change without notice.
5. The Developer reserves the right to make revisions/alterations without any liability whatsoever.



Master Bedroom

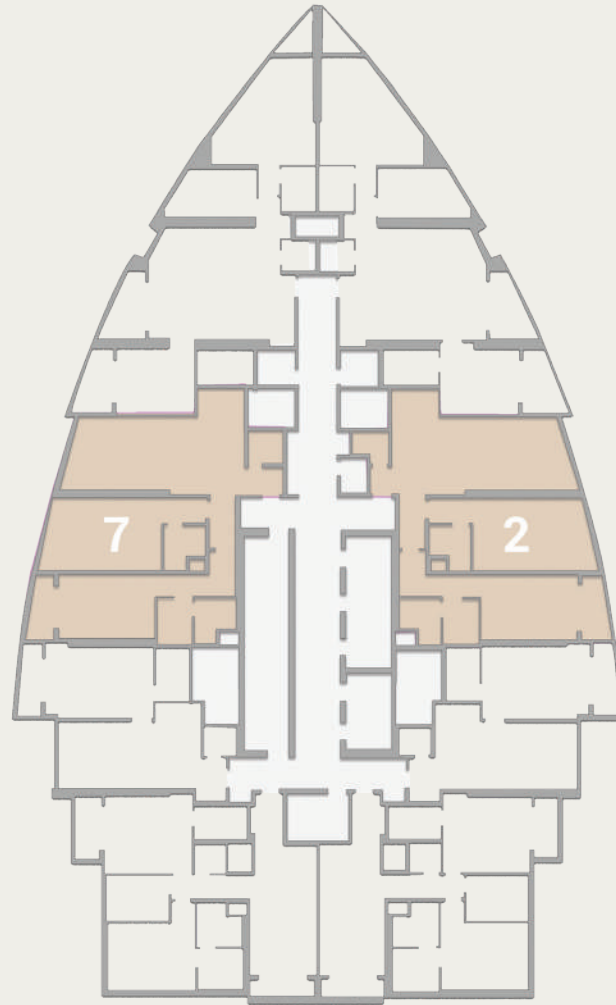
AJMAN PEARL TOWER

SERIES 2

Size 2 BHK
Gross Area 2009.41 sq.ft.
186.68 sqm.

SERIES 7

Size 2 BHK
Gross Area 1933.09 sq.ft.
179.58 sqm.



Disclaimer:

1. All materials, finishes, dimensions and drawings are approximate.
2. Actual suite area may vary from the stated area.
3. Drawings are not to scale.
4. Information is subject to change without notice.
5. The Developer reserves the right to make revisions/alterations without any liability whatsoever.



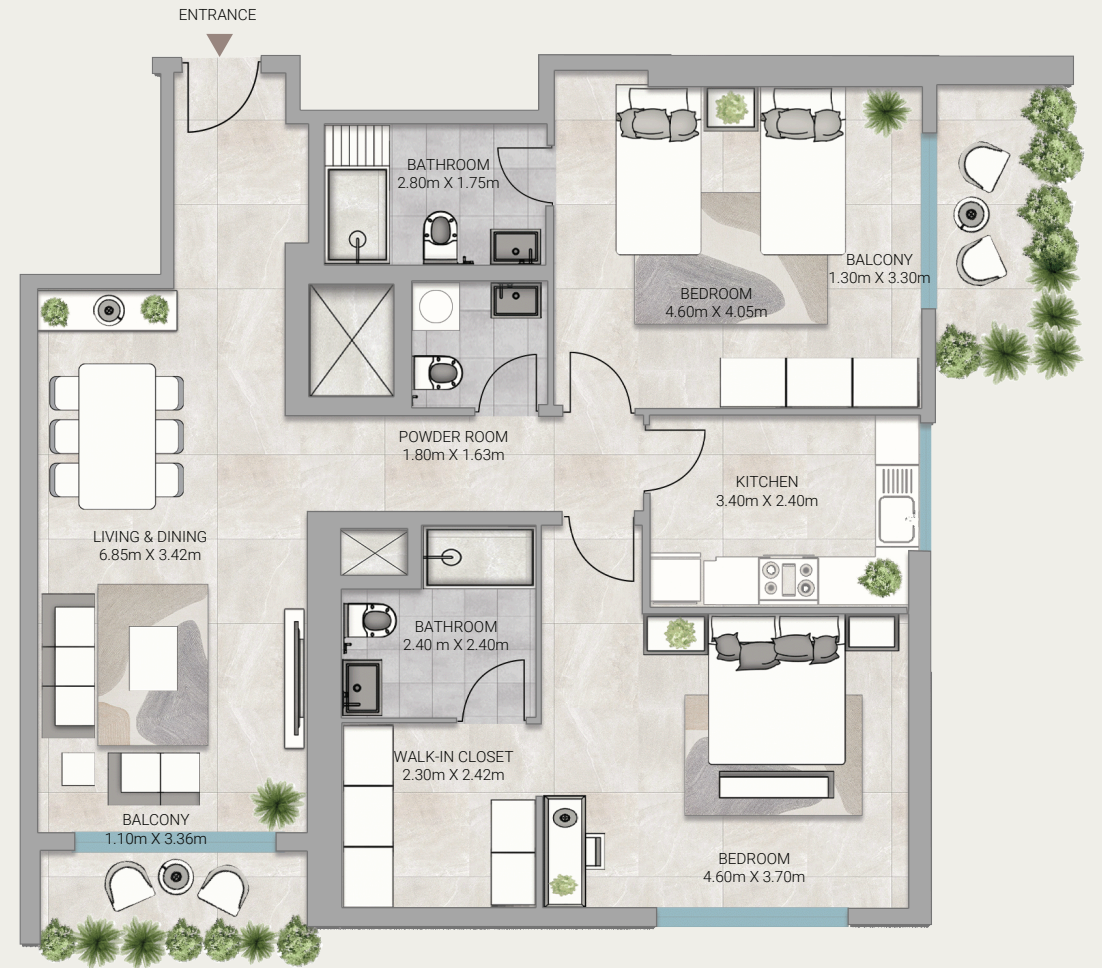
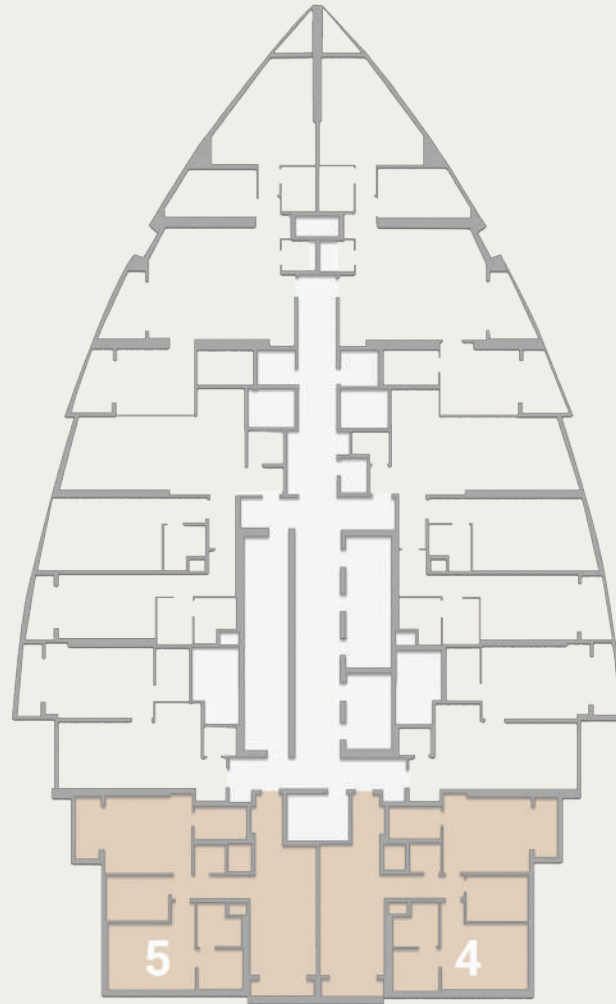
AJMAN PEARL TOWER

SERIES 4

Size 2 BHK
Gross Area 1777.12 sq.ft.
165.09 sqm.

SERIES 5

Size 2 BHK
Gross Area 1777.01 sq.ft.
165.08 sqm.



Disclaimer:

1. All materials, finishes, dimensions and drawings are approximate.
2. Actual suite area may vary from the stated area.
3. Drawings are not to scale.
4. Information is subject to change without notice.
5. The Developer reserves the right to make revisions/alterations without any liability whatsoever.





UNMATCHED QUALITY

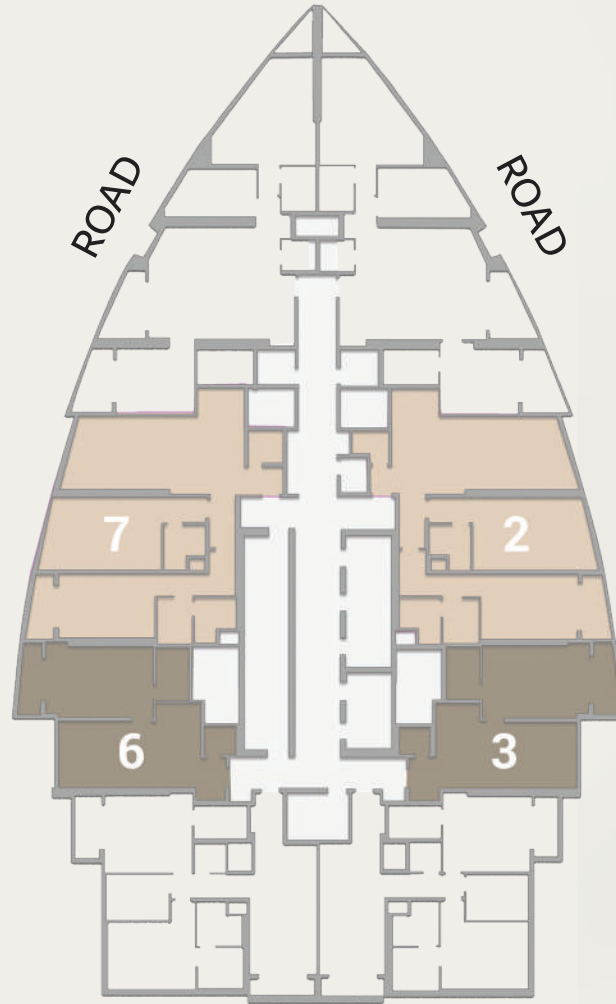
Ajman Pearl Tower is committed to providing an unparalleled living experience, emphasizing exclusive homes and quality craftsmanship. From carefully selected materials to impeccable craftsmanship, every aspect reflects refined elegance and lasting value.





Guest Room

OPENED KITCHEN



- 1 BEDROOM
- 2 BEDROOM

AN ENRICHED LIFE

Ajman Pearl Tower offers amenities designed to enhance residents' lifestyles and provide opportunities for relaxation, recreation, and community engagement.





Guest Bathroom

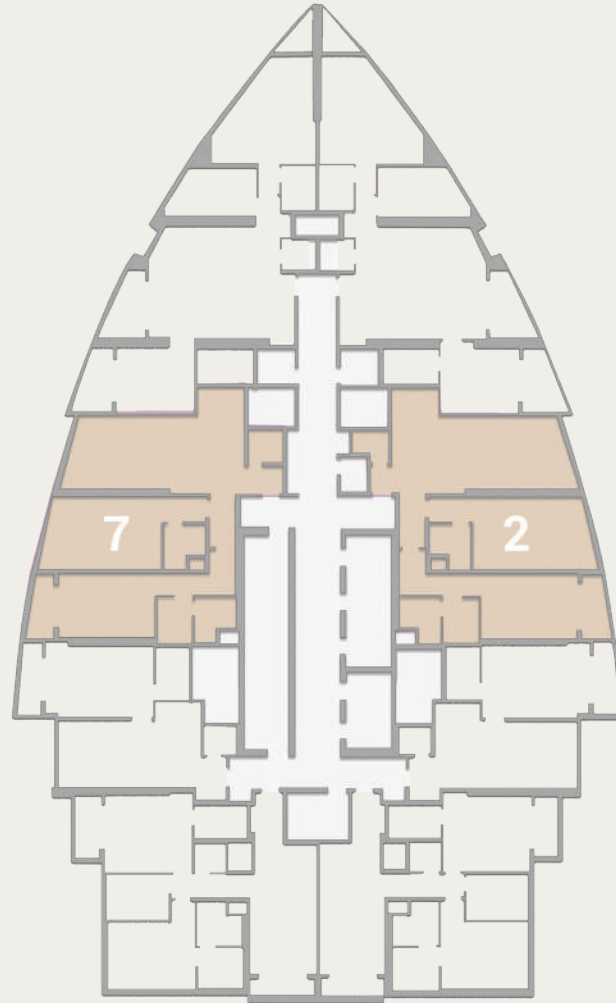
AJMAN PEARL TOWER

SERIES 2

Size 2 BHK
 Gross Area 2009.41 sq.ft.
 186.68 sqm.

SERIES 7

Size 2 BHK
 Gross Area 1933.09 sq.ft.
 179.58 sqm.



Disclaimer:

1. All materials, finishes, dimensions and drawings are approximate.
2. Actual suite area may vary from the stated area.
3. Drawings are not to scale.
4. Information is subject to change without notice.
5. The Developer reserves the right to make revisions/alterations without any liability whatsoever.



Kitchen

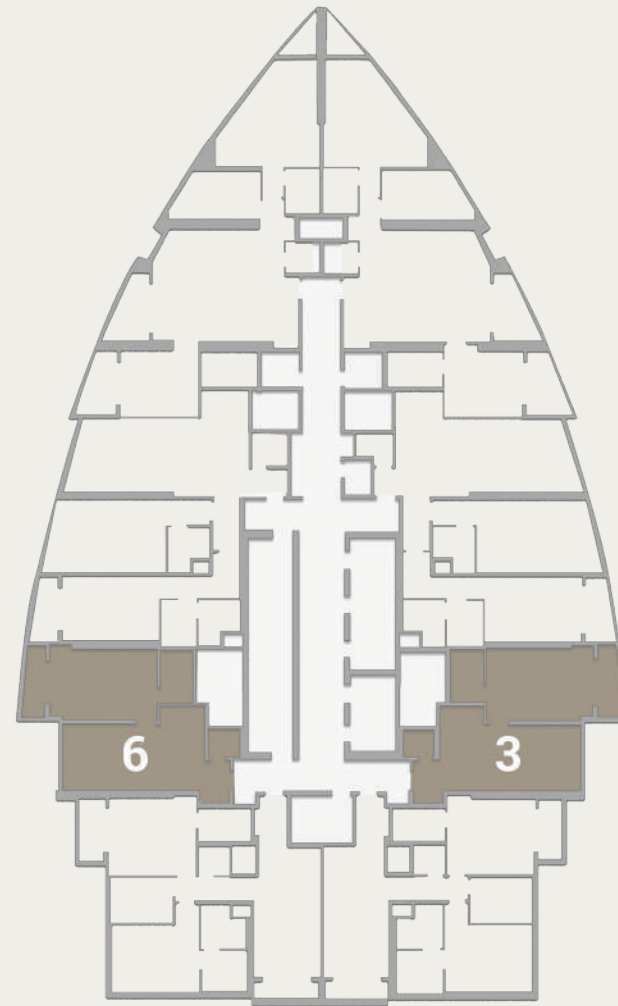
AJMAN PEARL TOWER

SERIES 3

Size 1 BHK
Gross Area 1083.28 sq.ft.
100.64 sqm.

SERIES 6

Size 1 BHK
Gross Area 1083.28 sq.ft.
100.64 sqm.



Disclaimer:

1. All materials, finishes, dimensions and drawings are approximate.
2. Actual suite area may vary from the stated area.
3. Drawings are not to scale.
4. Information is subject to change without notice.
5. The Developer reserves the right to make revisions/alterations without any liability whatsoever.

AJMAN PEARL TOWERS: FACTS & FEATURES

PROPERTY TYPE: Residential Apartments

PROPERTY LOCATION: Ajman Downtown

TOTAL NUMBER OF UNITS: 208

UNIT MIX: 1 and 2 Beds

1 BEDROOM SIZE: 1083 sqft
Starting from 587,000 AED

2 BEDROOM SIZE: 2096 sqft
Starting from: 957,000 AED

COMPLETION DATE: Q4/2027

HANDOVER DATE: Q1/2028

PAYMENT PLAN: 40/60
(2 years/4 years, Total 6 years)





NEARBY

Markets and Shopping Centers
Schools and Universities
Recreation Centers
Restaurants
Walking Areas
Sitting Areas
Parks



ON-SITE

Landscaped gardens
Children's play area
24/7 security
Covered parking
High-speed elevators
Retail space





جي جا العقارية
PROPERTIES

THE NAME SHAPING AJMAN

GJ Properties has established itself as a premier luxury real estate developer in Ajman and the Northern Emirates, delivering high-quality projects that exemplify a commitment to excellence.

With a mission to create living spaces that offer an exceptional quality of life, the brand seamlessly blends human-centric design with superior build quality.

By focusing on prime locations, innovative architecture, and responsive maintenance, each development is designed to exceed the aspirations of a discerning clientele.

As the portfolio continues to expand, including ventures like the Biltmore Residences Sufouh in Dubai, GJ Properties remains dedicated to solidifying its position as Ajman's leading private developer.

MAJARA

HEAD OFFICE:

Sheikh Rashid Bin Saeed Al Maktoum,
Street Ajman, UAE
Ground Floor ,

Phone

Oasis Tower 6 741 478 2

Toll Free

800 GJAJM (45256)

Email

info@gjproperties.ae

www.gjproperties.ae



جي جى العقارية
PROPERTIES



UAE: +971 58 586 4405
CH: +41 79 777 3773
info@majara-realestate.com
www.majara-realestate.com

MAJARA REAL ESTATE LLC
Burj Al Salam Tower, 38th floor
Sheikh Zayed Road
Dubai, U.A.E.



بنى بنا العقارية
BINA REAL ESTATE

Discover your oasis of refined elegance at Aiman Pearl Tower. Invest in a lifestyle of sophistication and comfort.